

Project Code: TIGL08  
Planning Consent Ref No: F/APP/2006/4605  
Date of report: June 2010  
Client: Trump International Golf Links



## TRUMP CHAMPIONSHIP GOLF COURSE, MENIE ESTATE, ABERDEENSHIRE, SCOTLAND

Report on Watching Brief on Marram Grass planting  
& for the construction of the championship golf course

Magnar Dalland  
*BA MA MA MEng MIFA*

# PROJECT SUMMARY SHEET

<i>Client</i>	TRAMP INTERNATIONAL GOLF LINKS
<i>National Grid Reference</i>	NJ 99215 21140
<i>Parish</i>	BELHELVIE
<i>Council</i>	ABERDEENSHIRE
<i>Planning Consent Ref No</i>	F/APP/2006/4605
<i>Project Manager</i>	MARK ROBERTS
<i>Text</i>	MAGNAR DALLAND
<i>Illustrations</i>	CAROLINE NORRMAN JULIA BASTEK
<i>Typesetting</i>	CAROLINE NORRMAN
<i>Fieldwork</i>	MAGNAR DALLAND ROSS MURRAY
<i>Schedule</i>	
<i>Fieldwork</i>	1 <sup>ST</sup> MARCH 2010
<i>Report</i>	14 <sup>TH</sup> JUNE 2010

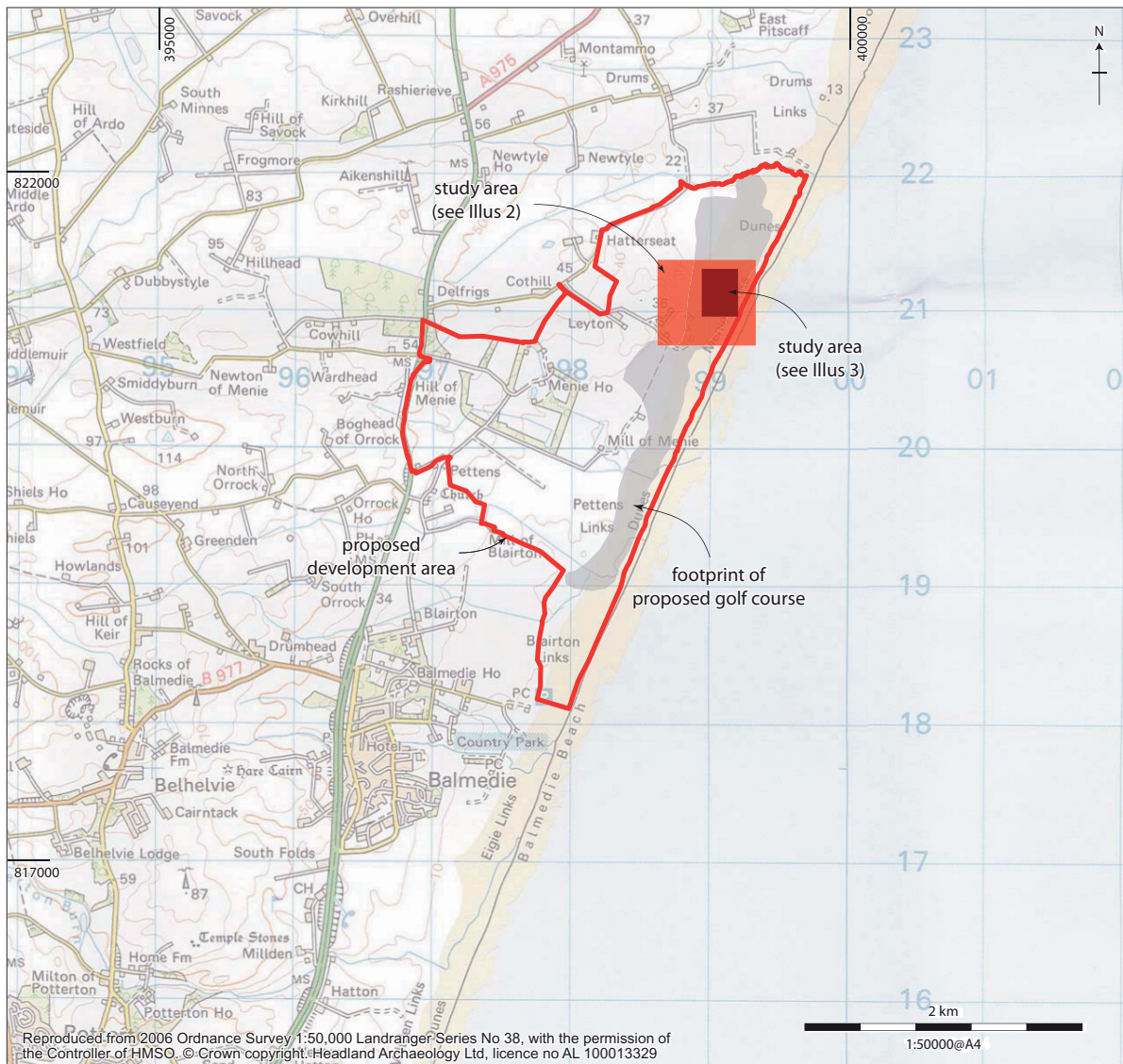
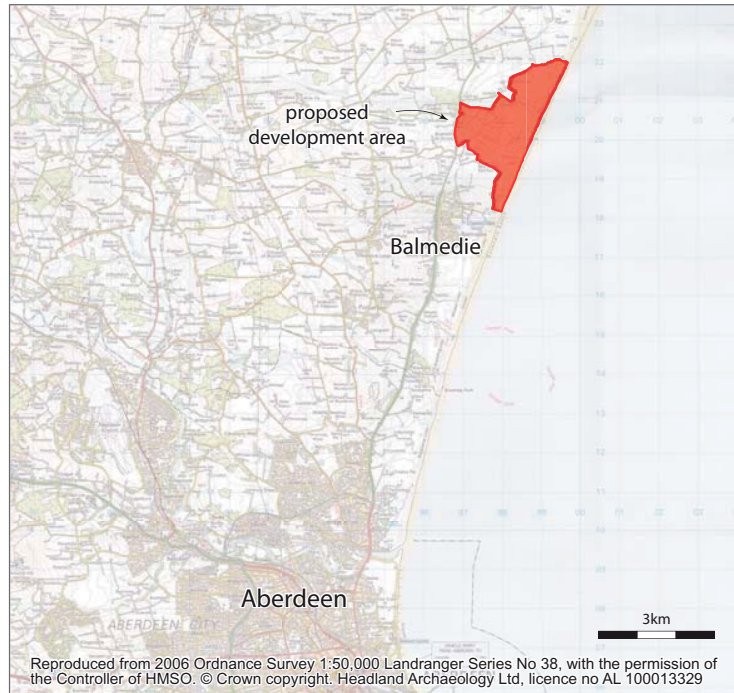
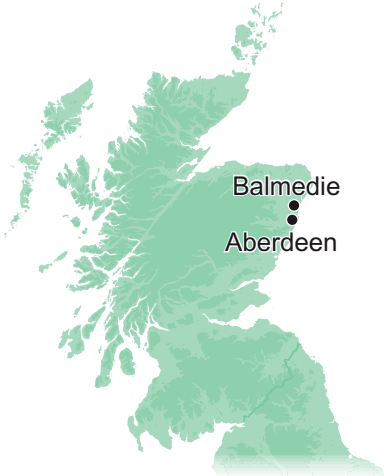
*Signed off by:* .....

*Mark Roberts BA(Hons) MIFA, Project Manager*

*Date:*.....

## CONTENTS

1.	INTRODUCTION	1
2.	BACKGROUND	1
	2.1 Location	1
3.	RESULTS	1
	3.1 Watching Brief	1
4.	CONCLUSIONS	4
APPENDICES		5
	Appendix 1 – Photographic register	5



**Illus 1**  
Location plan



# TRUMP CHAMPIONSHIP GOLF COURSE, MENIE ESTATE, ABERDEENSHIRE, SCOTLAND

## Report on Watching Brief on Marram Grass planting & for the construction of the championship golf course

by Magnar Dalland

*An archaeological watching brief was carried out during dune stabilisation and Marram grass planting evaluation at the proposed links golf course at Menie Estate, Aberdeenshire in March 2010. At the time of the site visits the Marram Grass planting did not disturb any archaeological deposits. However, in the area of the old track at the east of the site where flints had been disturbed in the past fresh flint scatters were observed.*

### 1. INTRODUCTION

An archaeological watching brief was carried out during dune stabilisation and Marram grass planting for the championship golf course at the proposed golf and resort development at Menie Estate, Aberdeenshire. The watching brief took place during two visits in March 2010 and was carried out in accordance with a Written Scheme of Investigation that was prepared by Headland and based on requirements outlined by Moira Greig of Aberdeen Council Archaeology Service.

### 2. BACKGROUND

#### 2.1 Location

The development area is situated some 8 km to the north of Aberdeen at Menie estate (NGR NJ 98 20) immediately to the north of Balmedie. The area is roughly D-shaped facing the North Sea to the east. The development area covers 452 hectares and extends just less than 4.3 km along the coast and over 2 km inland to the west.

The championship golf course will be located in the dune system along the coast to the east. It extends some 3.3 km north to south along the coast (Illus 1).

Previous surveys have identified a number of sites in the area affected by the construction of the golf course, mainly comprising early prehistoric flint scatters. Flint Scatters 1 and 2 (near the 10th and 18th holes) were examined in October 2009 and much of the material is of early prehistoric date (about 7th millennium BP) but were proven to be not in situ as they had moved horizontally and vertically with the active dune system (Dalland, 2009).

### 3. RESULTS

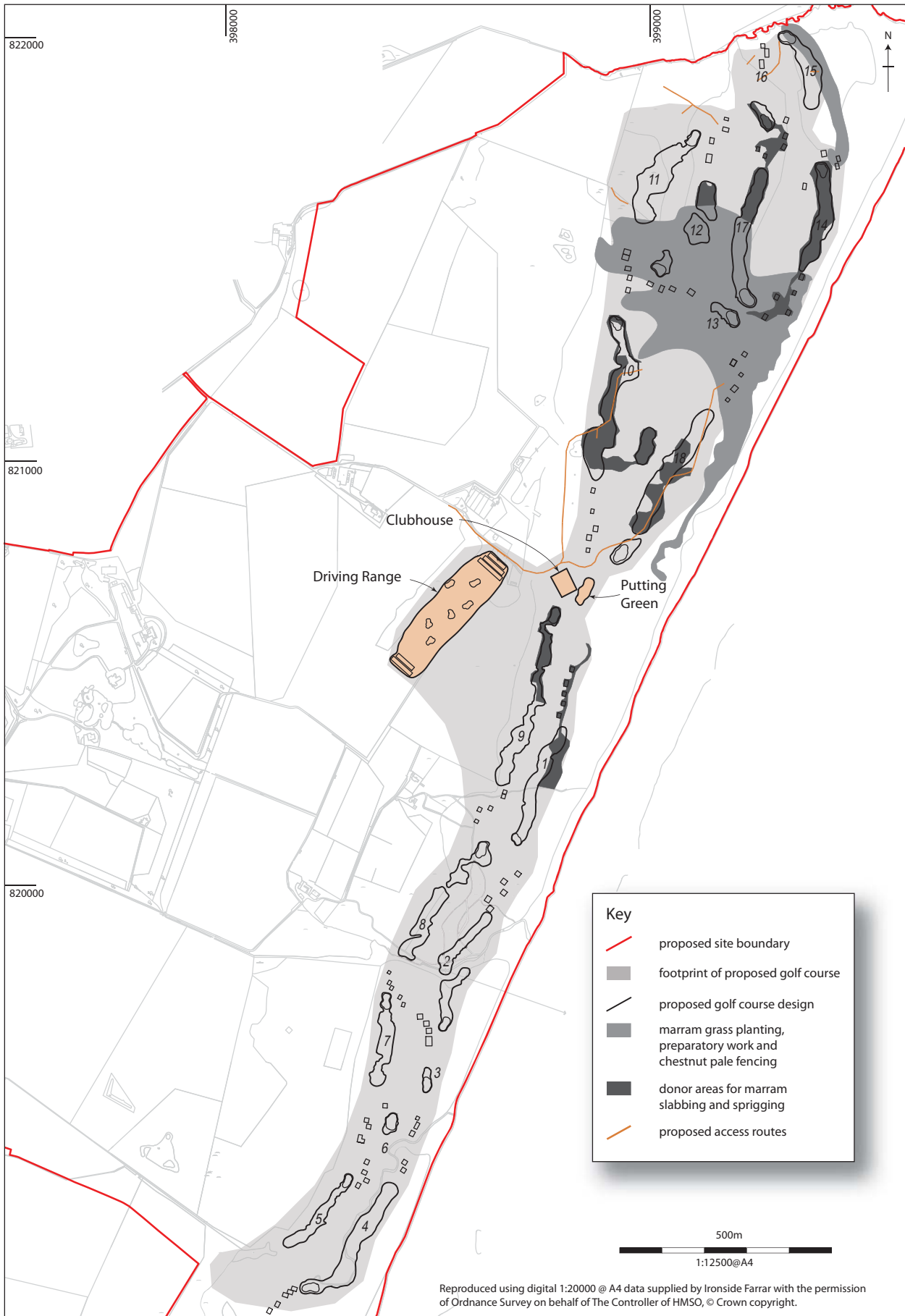
#### 3.1 Watching Brief

Marram Grass planting was undertaken in areas outside the known flint scatters. The planting involved hand sprigging grass rhizomes from the donor areas and some mechanical removal and replanting (slabbing). Some of the donor areas lay within the area that potentially could contain flint scatters and other areas were located high up in the dunes with low potential of archaeological deposits (Illus 2).

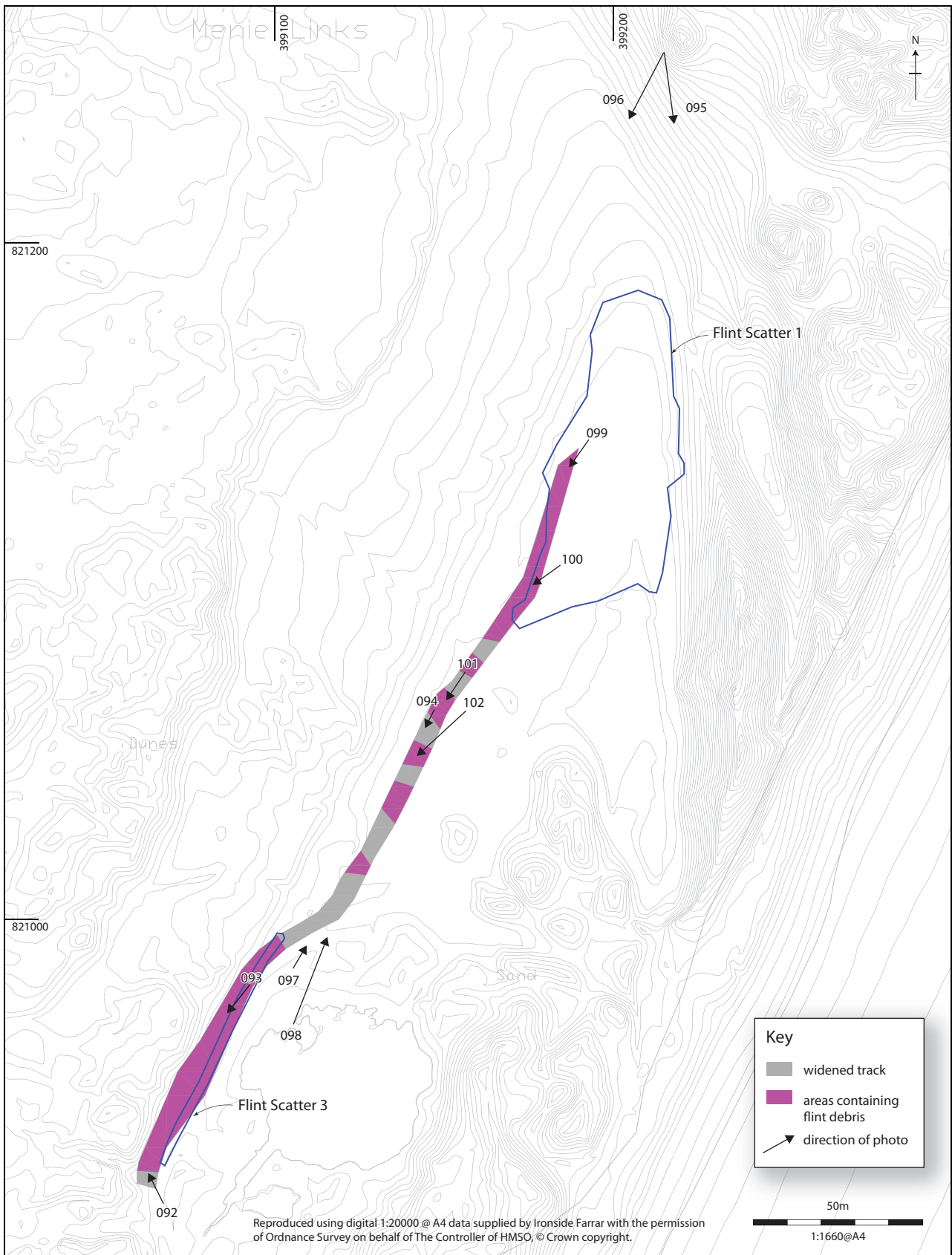
At the time of the visits the slabbing and sprigging areas were both in the parts of the dune system that are at a level above the horizon containing the flint scatters and hence the risk of disturbing any archaeological deposits were considered to be minimal.

During a site meeting on 2nd September 2009 it was discussed that the existing tracks to be used as a part of the works cut through the two known flint scatters and subsequently it was agreed that traffic would be confined to the track area in order to minimise any further disturbance. Wooden matting was also deployed in order to reduce traffic impact over Flint Scatter 2. However, while confining the use of the area to the route of the existing tracks was successful the attempts to mitigate disturbance by using matting were only partially successful.

Prior to the golf links construction previous use of the old track that ran along the north side of Flint Scatter 1 had disturbed the deposits in this area. The use of the track for access revealed new deposits as numerous worked flints were noted in the low sections along the edges of the track corridor. A new flint scatter was noted to the south of Flint Scatter 1 (Illus 3, 4).



**Illus 2**  
 Layout of the links golf course



**Illus 3**  
Plan of widened track showing areas of flint scatters



**Illus 4**

Scar along edge of track. From SSW

#### 4. CONCLUSIONS

At the time of the site visits the Marram Grass planting did not disturb any archaeological deposits. However, there was evidence that further parts of Flint Scatter 1 and a previously unknown flint scatter (numbered 3) to the south of Flint Scatter 1 had been revealed by the use of the old track. This appeared to have happened prior to our site visits.



## APPENDICES

**Appendix 1 – Photographic register**

Picture No.	Digital file name	Facing	Description
1-26	–	–	Pictures taken during initial survey in July 2009
27-41	–	–	Pictures from evaluation of ‘cairn’
42-72	–	–	Pictures taken during survey of flint scatters
073	TIGL08-004-Pic-073.jpg	N	General view of area to north of marram grass transplanting
074	TIGL08-004-Pic074.jpg	SE	General view of area of marram grass transplanting
075	TIGL08-004-Pic075.jpg	N	View of works for road laying north of marram grass transplanting
076	TIGL08-004-Pic076.jpg	W	View of works for road laying north of marram grass transplanting
077	TIGL08-004-Pic077.jpg	NE	General view of area of marram grass cutting
078	TIGL08-004-Pic078.jpg	E	General view of area of marram grass cutting
079	TIGL08-004-Pic079.jpg	NE	General view of area of marram grass cutting
080	TIGL08-004-Pic080.jpg	N	General view of area of marram grass cutting
081	TIGL08-004-Pic081.jpg	NW	View of works for road laying north of marram grass transplanting
082	TIGL08-004-Pic082.jpg	SW	View of works for road laying north of marram grass transplanting
083	TIGL08-004-Pic083.jpg	S	View of works for road laying north of marram grass transplanting
084	TIGL08-004-Pic084.jpg	E	General view of site
085	TIGL08-004-Pic085.jpg	E	General view of site
086	TIGL08-004-Pic086.jpg	E	General view of marram grass donor area
087	TIGL08-004-Pic087.jpg	NE	General view of marram grass donor area
088	TIGL08-004-Pic088.jpg	E	General view of marram grass donor area
089	TIGL08-004-Pic089.jpg	SE	General view of marram grass donor area
090	TIGL08-004-Pic090.jpg	NE	General view of area of marram grass cutting
091	TIGL08-004-Pic091.jpg	E	General view of area of marram grass cutting
092	TIGL08-004-Pic092.jpg	NE	Flints exposed along NW side of disturbed track
093	TIGL08-004-Pic093.jpg	SW	View towards SW end of disturbed track
094	TIGL08-004-Pic094.jpg	SW	Edge of disturbed track
095	TIGL08-004-Pic095.jpg	S	General view of disturbed section of track
096	TIGL08-004-Pic096.jpg	SW	General view of disturbed section of track
097	TIGL08-004-Pic097.jpg	NE	Section along NW side of disturbed track
098	TIGL08-004-Pic098.jpg	NE	Section along NW side of disturbed track
099	TIGL08-004-Pic099.jpg	SW	Disturbed section of track
100	TIGL08-004-Pic100.jpg	SW	Track
101	TIGL08-004-Pic101.jpg	SW	NE end of disturbed track
102	TIGL08-004-Pic102.jpg	SW	NE end of disturbed track