

NMGE13



NATIONAL MUSEUMS GRANTON, EDINBURGH

A Standing Building Survey

for National Museums Scotland

May 2013

NATIONAL MUSEUMS GRANTON, EDINBURGH

A Standing Building Survey

for National Museums Scotland

May 2013

HA Job no.: NMGE13

NGR: NT 22813 76897

Parish: Edinburgh

Local authority: City of Edinburgh Council

OASIS ref.: headland1-144930

Archive will be deposited with RCAHMS

Project Manager

Author

Fieldwork

Graphics

Approved by

Edward Bailey

Donald Wilson

Donald Wilson

Julia Bastek & Caroline Norrman

Edward Bailey – Project Manager



.....

© 2013 by Headland Archaeology (UK) Ltd

**Headland Archaeology
North East**

13 Jane Street
Edinburgh EH6 5HE

0131 467 7705

northeast@headlandarchaeology.com

www.headlandarchaeology.com

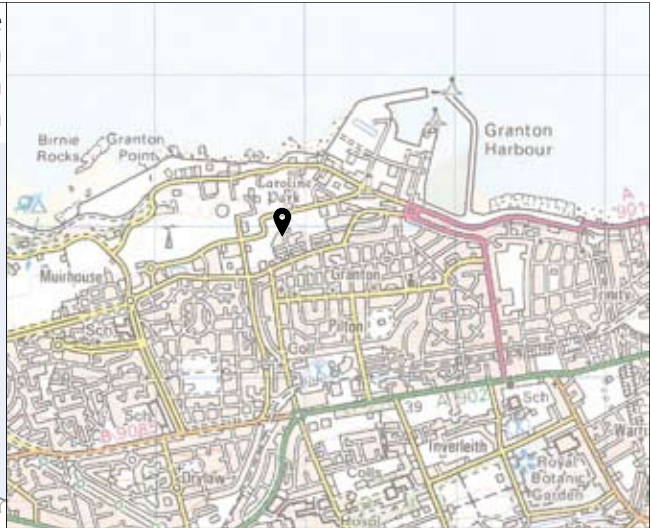


CONTENTS

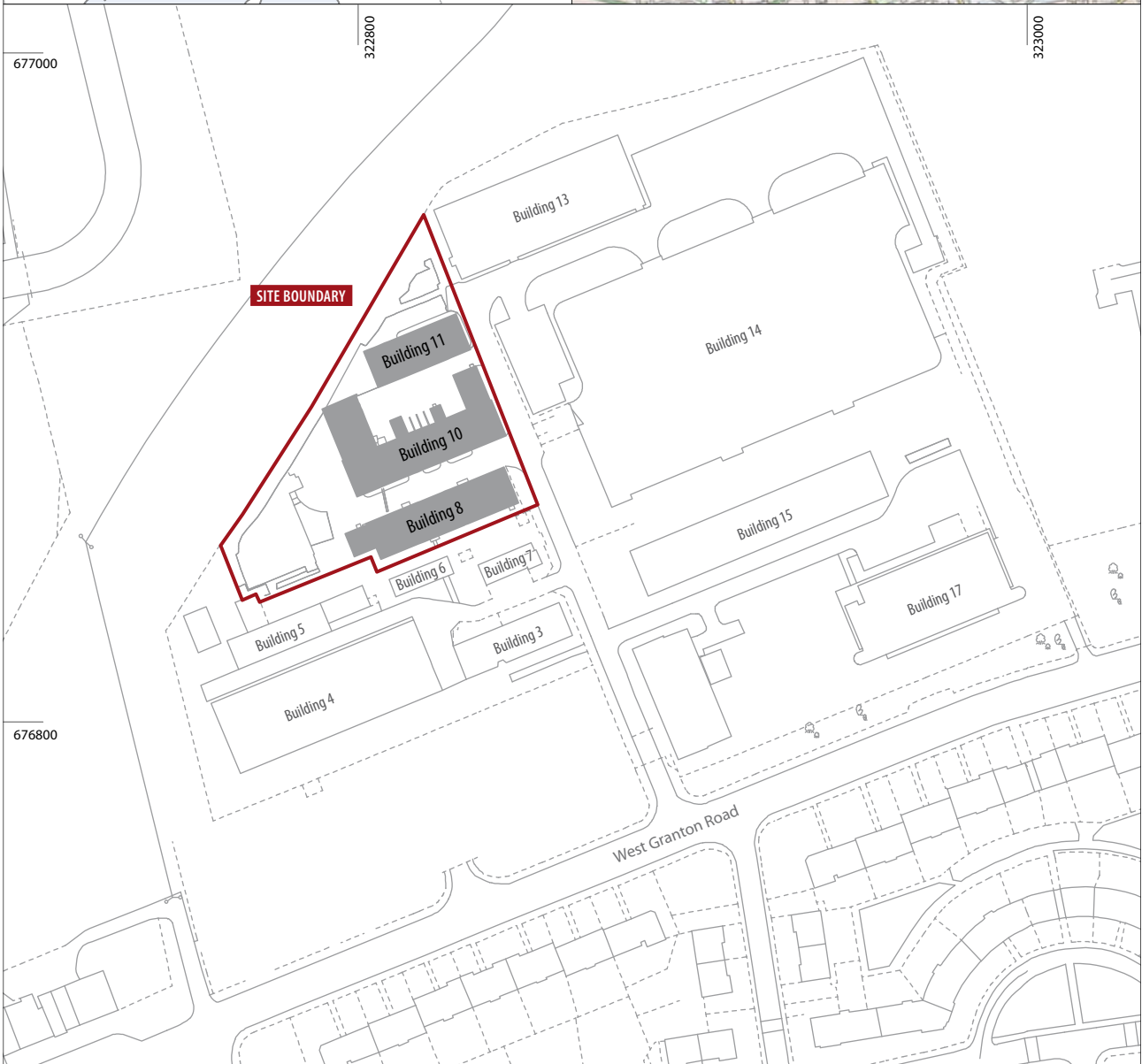
1.	INTRODUCTION	1
2.	SITE DESCRIPTION & BACKGROUND	1
3.	OBJECTIVES	2
4.	METHODOLOGY	2
	4.1 Recording	2
	4.2 Reporting and archive	2
5.	RESULTS	2
	5.1 Site description	2
	5.2 Building 8 (Illus 3)	2
	5.3 Building 10	4
	5.4 Building 11 (see Illus 7)	9
6.	SUMMARY	10
7.	REFERENCES	10
8.	APPENDICES	11
	Appendix 1 Photographic register	11
	Appendix 2 Discovery and Excavation in Scotland	14

LIST OF ILLUSTRATIONS

<i>Illus 1</i>		viii
	<i>Site location</i>	
<i>Illus 2</i>		2
	<i>View of the buildings from the SE</i>	
<i>Illus 3</i>		3
	<i>Floor plan of Building 8</i>	
<i>Illus 4</i>		4
	<i>View of Building 8 from the NW showing the extension to the W end</i>	
<i>Illus 5</i>		4
	<i>North elevation of Building 8 from the SE</i>	
<i>Illus 6</i>		4
	<i>Internal view of Building 8 along the corridor from the E</i>	
<i>Illus 7</i>		5
	<i>Floor plan of Buildings 10 & 11</i>	
<i>Illus 8</i>		6
	<i>View of Building 10 from the SW</i>	
<i>Illus 9</i>		6
	<i>Detail of the small extensions and brick stalls to the N of Building 10</i>	
<i>Illus 10</i>		6
	<i>Detail of the S elevation of Building 10 from the SW</i>	
<i>Illus 11</i>		7
	<i>Detail of the E elevation of Building 10</i>	
<i>Illus 12</i>		7
	<i>Internal view of the W end of Building 10</i>	
<i>Illus 13</i>		7
	<i>View of the W extension to the N side of Building 10 from the NE</i>	
<i>Illus 14</i>		8
	<i>Detail of the E extension to the N side of Building 10 from the W</i>	
<i>Illus 15</i>		8
	<i>Internal shot of the E extension of Building 10 from the NW</i>	
<i>Illus 17</i>		9
	<i>Detail of the S wall of Building 11 showing the construction line</i>	
<i>Illus 18</i>		9
	<i>View of the N elevation of Building 11 from the NW</i>	
<i>Illus 16</i>		9
	<i>General view of Building 11 from the NE</i>	
<i>Illus 19</i>		10
	<i>Internal view of Building 11 from the SE</i>	
<i>Illus 20</i>		10
	<i>Detail of the patterned brick work in Building 11</i>	



viii



Reproduced using 2010 OS 1:50,000 Landranger Series no. 66 and digital data. Ordnance Survey © Crown copyright 2013. All rights reserved. Licence no. AL 100013329

scale 1:2,000 @ A4



Illus 1

Site location

NATIONAL MUSEUMS GRANTON, EDINBURGH

A Standing Building Survey

Headland Archaeology was commissioned by the National Museums of Scotland (NMS) to undertake a programme of building recording at their collection centre on West Granton Road, Edinburgh. This report forms a basic written, metric and photographic record of the buildings.

The continued expansion of the NMS collection centre required the demolition of three brick constructed single storey buildings dating to the late 1940s/early 1950s. At the time of the survey these buildings were in a moderate state of repair and had been stripped of all the modern internal fixtures and fittings. The buildings represented part of a larger complex of buildings located to the west of the existing collection centre that comprised two storage buildings and an office block.

The work undertaken as part of the current project enabled a preliminary phasing of some elements of the buildings. This included the insertion and blocking of windows and doors and the construction of two new gable ends. The buildings were constructed to retrain ex service personnel soldiers returning to the UK after WWII.

1. INTRODUCTION

The National Museums of Scotland commissioned Headland Archaeology (UK) Ltd to undertake a programme of building recording at their collection centre on West Granton Road, Edinburgh. This involved the creation of a record of three buildings due for demolition. The work was carried out in accordance with the Written Scheme of Investigation agreed, in advance, with the City of Edinburgh Council Archaeology Service (CECAS).

The report comprises a brief review of desk-based research carried out on the structure together with measured survey, descriptions and limited analysis to the standard of a Level 2 RCHME survey (1991).

2. SITE DESCRIPTION & BACKGROUND

The site is located close to the shore along West Granton Road, Edinburgh (NGR: NT 22813 76897) adjacent to the existing NMS collection centre approximately 1km south-west of Granton Harbour (*Illus 1*). A number of aerial photographs of the area are held by the RCAHMS (NMRS: NT27NW 557) showing the area prior to the construction of the modern collection centre now located at this site.

The site lies within an area of modern industrial development, being close to the site of the earliest purpose-built car factory in Britain. The Madelvic Works (NMRS: NT27NW 349.01) produced cars from

1898 to 1900 and was later converted to become part of the United Wire Works Granton factory (NMRS: NT27NW 349). To the west of the site was Granton Gas Works (NMRS: NT27NW 20) of which only a few buildings survive. These include the only surviving gas holder (NMRS: NT27NW 20.6) constructed between 1898 and 1904. These works were serviced by a train line that ran to Granton until its closure in 1942 (NMRS: NT27NW 20.04).

The three buildings that form the basis of this report are part of a larger complex of buildings located immediately west of the modern NMS collections centre. A total of eight Buildings form this complex with the majority contemporary with the three buildings due for demolition. Cartographic records indicate that no development had taken place across the development site until the establishment of a training centre in the late 1940s. This was established by the Ministry of Labour, a government body first set up in 1916. After the First World War this body supervised the demobilisation and resettlement of ex-servicemen.

The buildings that form part of the building survey are first depicted on the Ordnance Survey 1951–64. The configuration of buildings then keeps the same pattern until the construction of the modern collection centre.

All the buildings on this site had been numbered (Building 3 to Building 8 plus Buildings 10 and 11) prior to the recording works and these numbers have been repeated within this report for the purpose of continuity. The three buildings that form the basis of this report have been numbered Building 8, 10 and 11.



Illus 2

View of the buildings from the SE

inclusion in Discovery and Excavation Scotland a copy of which can be found in Appendix 2

The project archive will be compiled in accordance with the guidelines published by the Institute for Archaeologists on behalf of the Archaeological Archives Forum (July 2007). The documentary and digital archive will be submitted to RCAHMS within six months of completion of all work on this project.

5. RESULTS

3. OBJECTIVES

In general the purpose of the works was to provide an appropriate level of record to mitigate the loss and alteration of historic standing structures through demolition (following Scottish Planning Policy, Planning Advice Note 2/2011 Planning and Archaeology The Scottish Government 2011 & City of Edinburgh Council Edinburgh Local Plan 2010).

4. METHODOLOGY

4.1 Recording

The survey of the buildings utilised the general standards for a Level 2 Survey as set out by English Heritage (2006), the RCAHMS (2004) and the IfA (2008) and involved a combination of written description, annotation of plans supplied by the client and photographs. The principal purpose of recording in this instance was to record the buildings and any significant features that could inform the phasing or development of the building and to provide an archive of data that could be investigated at any point in the future.

Colour slide and digital photographs were taken including general views of the buildings along with individual features of interest. Each photograph was given a individual number and digital files were named accordingly. A full list of the photographic record can be found in Appendix 1.

A plan of the development area in relation to the National Grid was supplied by the client.

4.2 Reporting and archive

On completion of the building recording a site archive and an archive report will be produced. An online OASIS report has been completed and is accompanied by a pdf report and boundary file (headland1-144930). A summary report has been submitted for

5.1 Site description

The historic building record was centred on three single storey brick constructed buildings (*Illus 2*) to the north end of the group of buildings that form the NMS collection centre. These buildings have been numbered Building 8, 10 and 11 (*Illus 1*) and were all aligned east/west. Building 11 was located to the north side of the development area and Building 8 to the south with Building 10 in the centre. Building 9 had been demolished prior to the planning application for the re-development of this site and was represented by the remains of a concrete floor recorded to the west of Building 8.

Although all these buildings had been stripped of modern fittings it was clear that Buildings 10 and 11 had been used as storage units as the interiors of these buildings included large open spaces. Building 8 on the other hand had clearly been used as offices as it included a large number of smaller rooms leading off a central corridor.

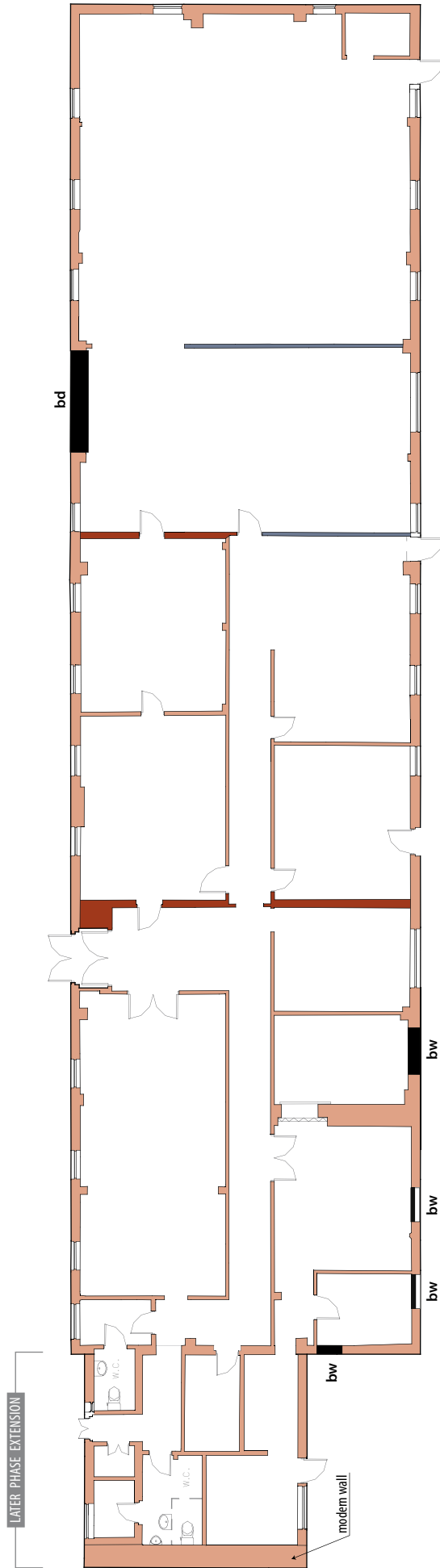
The surrounding area between the three buildings was predominantly concrete with areas of square concrete slabs covering a number of drains. To the south of Building 8 a grass bank and revetted brick wall led up to further buildings of similar design (Buildings 5, 6 and 7) that clearly represent part of the same development.

5.2 Building 8 (Illus 3)

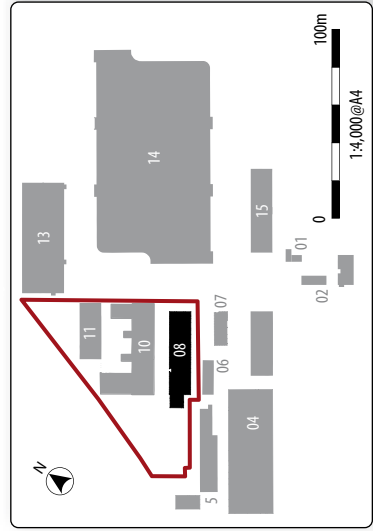
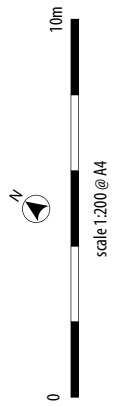
Building 8 was a 49m long single storey brick structure with a short later phase extension abutting the west end (*Illus 4*). The main building included gabled ends and corrugated iron sheeting across the roof. The wall head was capped with painted timber eaves and the roof capped by timber skewes on the gables. All the main wall faces were of stretcher brickwork bonded with cement. The small brick extension to the west end was only half the width of the main building and included an even later phase modern brick end wall, presumably constructed after Building 9 had been demolished.

The north elevation included a large brick-blocked door along with a series of casement windows evenly spread along the elevation. A

BUILDING 08



- KEY**
- brick walls (stretcher bond)
 - brick walls (English Garden Wall bond)
 - plasterboard walls
 - bw blocked window
 - bd blocked door



Illus 3
Floor plan of Building 8



Illus 4

View of Building 8 from the NW showing the extension to the W end



Illus 5

North elevation of Building 8 from the SE

4



Illus 6

Internal view of Building 8 along the corridor from the E

large double timber door was also recorded towards the west end of this wall. All the windows included stone lintels and sills.

The south elevation (*Illus 5*) also included a large number of casement windows although these altered in size with a small number of larger windows recorded along with the more ubiquitous 3x3 casement windows. The windows at the west end of this elevation had subsequently been brick-blocked. The elevation also included three timber doors along its length.

Two small casement windows were also recorded on the east gable end elevation. The main west gable wall included a brick-blocked window that had been partially masked by the later extension.

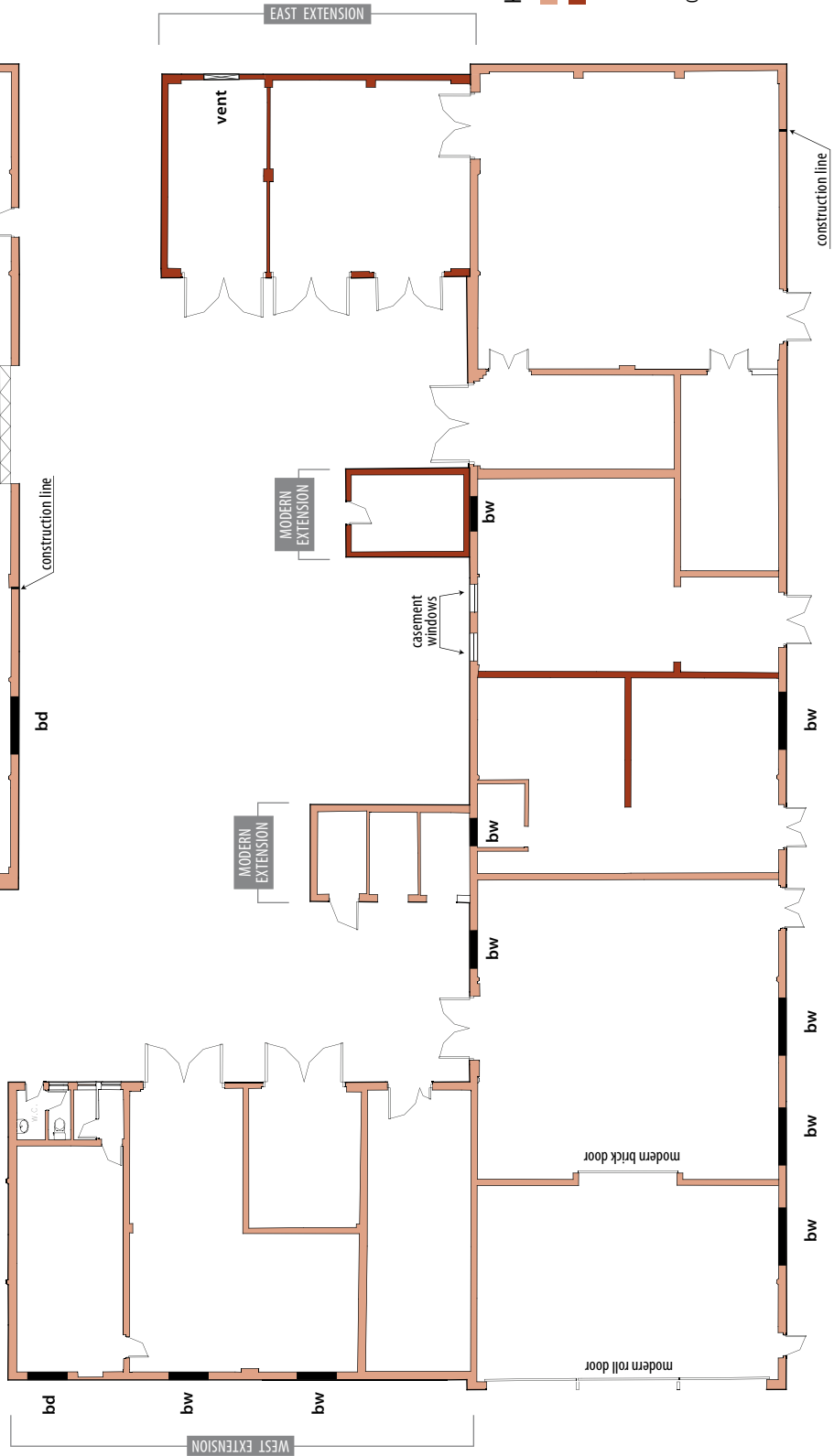
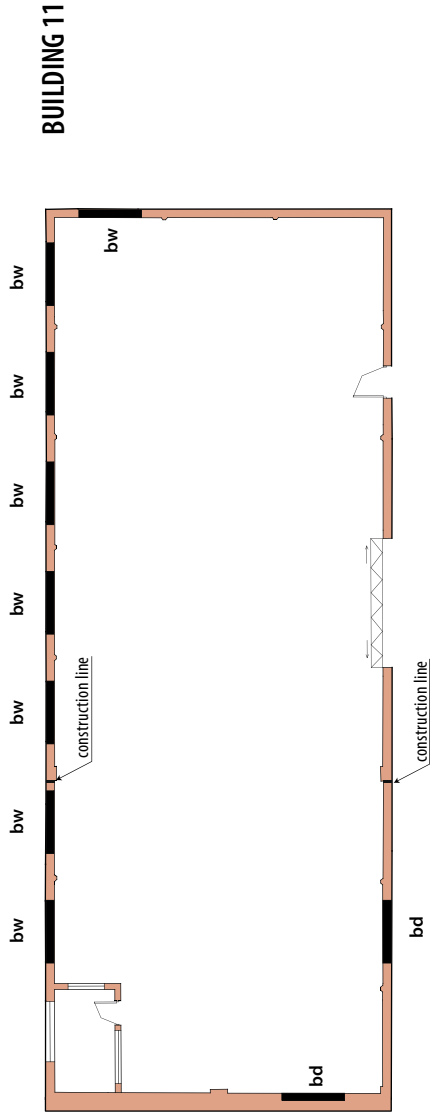
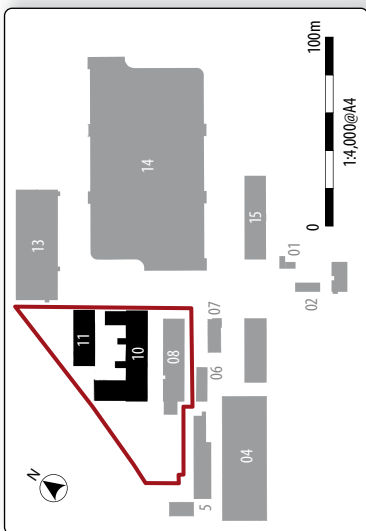
The internal configuration comprised a series of small rooms leading off a central corridor (*Illus 6*). The floor was concrete throughout and the steel roof support frame was exposed across the whole length of the building. A number of steel support pillars for the roof frame were exposed within the main brick walls of the building.

The partition walls were mainly painted brick constructed in a stretcher bond although two of the cross walls had an English-garden-bond construction. A number of timber and plasterboard walls also survived at the east end of the building. It was not clear if these changes in bonding style and material type represented different phases.

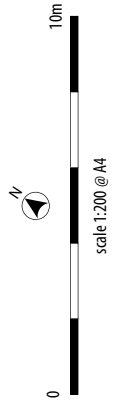
5.3 Building 10

Building 10 was represented by a 45m long single storey gable ended brick building that included two large extensions at each end projecting from the north elevation (*Illus 8*). In addition to this two smaller extensions were also recorded on the north elevation bounding a series of brick-walled bays (*Illus 9*). The brick walls of the main building had a stretcher bond construction on all sides and the corrugated iron roof included glass roof lights along each pitch of the roof.

The south elevation of the building included four large timber doors and four brick-blocked windows, three of which are located to the west end of the wall (*Illus 10*). A construction line was also recorded at the east end of the elevation. To the north side of the building a number of the features had been masked by the later



- KEY**
- brick walls (stretcher bond)
 - brick walls (English Garden Wall bond)
 - bw
 - bd



Illus 7

Floor plan of Buildings 10 & 11



Illus 8

View of Building 10 from the SW



Illus 9

Detail of the small extensions and brick stalls to the N of Building 10



Illus 10

Detail of the S elevation of Building 10 from the SW

extensions; although two sets of large double doors and three brick-blocked windows were recorded. The east elevation comprised a brick wall constructed of two different types of brick (*Illus 11*). The upper gable comprised a stretcher bond while the lower part of the wall had an English-garden-bond capped with stone. The wall has a slight recess suggesting it may have originally had a large opening at this end. The west elevation included a modern roller-door.

The internal configuration of the building comprised of seven separate rooms divided by painted brick walls. The outer walls included raised brick buttresses and integral steel roof support pillars. The ceiling was open to the basic steel frame of the roof (*Illus 12*) and the floor was concrete throughout. The central brick partition wall was constructed of English-garden-bond brickwork.

The brick extension to the west side of the north elevation included a flat roof and a small raised area to the north end (*Illus 13*). This extension formed four separate storage rooms with large double timber doors to the east side and brick-blocked windows to the west side (see *Illus 8*). The north end wall was clearly a later phase modern brick wall that had

Headland Archaeology

been constructed to replace a room further to the north that had been demolished, the concrete floor of which still survived.

The east extension on the north side of Building 10 comprised a two room brick building with an English-garden-bond construction and a flat concrete roof (*Illus 14*). It included three large timber double doors to the west side and two timber vents high up on the north side of the east wall. The internal construction included a concrete floor and walls that included raised brick buttresses. The roof was supported on steel pillars and beams and the internal brick partition wall was thought to be a later phase as it was not keyed into the main walls. A large double door on the south internal wall (also the north wall of Building 10) led into the main building (*Illus 15*).

Two smaller extensions were also recorded on the north wall of Building 10. These were both brick built with flat roofs and were clearly later phase additions. The extension to the east had an English-garden-bond construction and the one to the west a stretcher bond construction. These two extensions bounded a series of low brick walls that formed a series of small bays along the north elevation of Building 10 (see *Illus 9*).



Illus 11
 Detail of the E elevation of
 Building 10



Illus 12
 Internal view of the W end of
 Building 10



Illus 13
 View of the W extension to the N
 side of Building 10 from the NE



Illus 14

Detail of the E extension to the N side of Building 10 from the W



Illus 15

Internal shot of the E extension of Building 10 from the NW

Headland Archaeology

5.4 Building 11 (see Illus 7)

The final building at the north end of the development area was approximately 29m long forming a single storey gable ended brick building (Illus 16). It had a corrugated iron roof incorporating glass skylights along both pitches and timber skews along with painted timber eaves at the wall head. The brick walls were constructed in a stretcher bond on all four sides although a change in the type of brick used was recorded on both the north and south elevations with a clear construction line visible (Illus 17). It was unclear what this change in brick work represented.

The north elevation included a series of eight casement windows although the windows only survived in the final two openings at the west end of the elevation (Illus 18), the remainder having been brick-blocked on the internal elevation. The south elevation included a large modern concertina door and a single timber door close to the east end. A second door at the west end of the elevation had been brick-blocked (see Illus 17). As with the north elevation a construction line was clearly visible showing two distinct brick styles. The east elevation included a single casement window that had subsequently been boarded-up (see Illus 16). The bricks in the window surround were a slightly different colour and suggest the window was a later phase insertion. The west elevation was a plain brick wall using modern bricks. The construction was the same as that found on the north elevation of the west extension to Building 10 and clearly represented a modern support wall constructed after the demolition of the original west end of Building 11.

Building 11 had no internal dividing walls and formed a large warehouse space (Illus 19). It had a concrete floor and was open to the steel framed roof supported at the wall head by steel pillars embedded in the walls. All the windows on the north wall had been brick blocked with the blocking used to create a series of individual patterned brickwork forming a mosaic style decoration on the wall (Illus 20). The only internal structure was a small brick built office without a roof. This included a number of stylistic features that may represent a model blueprint that others could copy/learn. It is possible that the windows had been used as learning tools.



Illus 16

General view of Building 11 from the NE



Illus 17

Detail of the S wall of Building 11 showing the construction line



Illus 18

View of the N elevation of Building 11 from the NW



Illus 19

Internal view of Building 11 from the SE



Illus 20

Detail of the patterned brick work in Building 11

6. SUMMARY

Although the buildings themselves were fairly indistinctive and typical of the early 1950s style warehouse buildings they still represent part of an important social history due to their purpose. These buildings were constructed by the Ministry of Labour in order to retrain the large number of ex-servicemen who were de-mobbed after WWII. The buildings themselves were built by the ex-servicemen and used to train others the varied trades required in the construction industry. The mosaic brick patterns recorded in Building 11 were probably one of the many features used as blueprints for others to learn and copy.

7. REFERENCES

Archaeological Archives Forum Archaeological Archives: a guide to best practice in creation, compilation, transfer and curation (published by the IfA 2007).

English Heritage, 2006, Understanding Historic Buildings: A Guide to Good Recording Practice. English Heritage: Swindon.

IfA, 2008, Standards and Guidance for the archaeological investigation and recording of standing buildings and structures. Institute for Archaeologists: Reading.

RCAHMS 2004 Corporate Plan 2004-2009 Annex: Survey and Recording

RCHME 1991 Recording Historic Buildings: A Descriptive Specification (2nd Ed). London HMSO

SPP: Scottish Planning Policy (February 2010; <http://www.scotland.gov.uk/Publications/2010/02/03132605/0>)

Headland Archaeology

8. APPENDICES

Appendix 1 Photographic register

Shot	Slide film	Digital	Facing	Description
1	1/37	NMGE13-001		Film 1 ID shot
2	1/36	NMGE13-002	SW	General view of Building 11
3		NMGE13-003	SW	General view of Building 11
4	1/35	NMGE13-004	W	Detail of E wall of Building 11
5		NMGE13-005	W	Detail of E wall of Building 11
6		NMGE13-006	W	Detail of E wall of Building 11
7	1/34	NMGE13-007	SW	General view of the N elevation of Building 11
8	1/33	NMGE13-008	S	Details of window at the E end of N wall, Building 11
9	1/32	NMGE13-009	SE	View of the N wall of Building 11
10		NMGE13-010	SE	View of the N wall of Building 11
11	1/31	NMGE13-011	S	Detail of the window at the W end of the N wall of Building 11
12		NMGE13-012	S	Detail of the window at the W end of the N wall of Building 11
13	1/30	NMGE13-013	S	Detail of construction line on n wall of Building 11
14		NMGE13-014	S	Detail of construction line on n wall of Building 11
15	1/29	NMGE13-015	E	Detail of W elevation of Building 11
16		NMGE13-016	E	Detail of W elevation of Building 11
17		NMGE13-017	NE	Detail of S elevation of Building 11
18	1/28	NMGE13-018	N	View of S wall of Building 11 depicting the door and construction line
19		NMGE13-019	N	View of S wall of Building 11 depicting the door and construction line
20	1/27	NMGE13-020	NW	E side of S elevation of Building 11
21	1/26	NMGE13-021	NW	View of interior of Building 11
22		NMGE13-022	NW	View of interior of Building 11
23	1/25	NMGE13-023	W	Detail of roof beams in Building 11
24		NMGE13-024	W	Detail of roof beams in Building 11
25	1/24	NMGE13-025	SW	View of interior of Building 11
26	1/23	NMGE13-026	NW	Detail of brick construction in NW corner of Building 11
27		NMGE13-027	NW	Detail of brick construction in NW corner of Building 11
28	1/22	NMGE13-028	N	Detail of window blocking on interior N wall of Building 11
29	1/21	NMGE13-029	E	View of interior of Building 11

Shot	Slide film	Digital	Facing	Description
30		NMGE13-030	E	View of interior of Building 11
31	1/20	NMGE13-031	N	Detail of brickwork on interior N wall of Building 11
32		NMGE13-032	N	Detail of brickwork on interior N wall of Building 11
33	1/19	NMGE13-033	N	Detail of brickwork on interior N wall of Building 11
34		NMGE13-034	N	Detail of brickwork on interior N wall of Building 11
35	1/18	NMGE13-035	N	Detail of brickwork on interior N wall of Building 11
36		NMGE13-036	N	Detail of brickwork on interior N wall of Building 11
37	1/17	NMGE13-037	N	Detail of brickwork on interior N wall of Building 11
38		NMGE13-038	N	Detail of brickwork on interior N wall of Building 11
39	1/16	NMGE13-039	N	Detail of brickwork on interior N wall of Building 11
40		NMGE13-040	N	Detail of brickwork on interior N wall of Building 11
41	1/15	NMGE13-041	N	Detail of brickwork on interior N wall of Building 11
42	1/14	NMGE13-042	N	Detail of brickwork on interior N wall of Building 11
43	1/13	NMGE13-043	E	Detail of brickwork on interior N wall of Building 11
44	1/12	NMGE13-044	SE	General view of the W wall of the E extension of Building B10
45		NMGE13-045	SE	General view of the W wall of the E extension of Building B10
46	1/11	NMGE13-046	E	General view of the W wall of the E extension of Building B10
47	1/10	NMGE13-048	E	Interior of N half of E extension of Building 10
48	1/9	NMGE13-050	SE	Interior of the S half of E extension of Building 10
49	1/8	NMGE13-051	SE	Interior of the S half of E extension of Building 10
50		NMGE13-052	S	Interior of the S half of E extension of Building 10
51	1/7	NMGE13-053	W	View of E elevation of the W extension to Building 10
52	1/6	NMGE13-054	SW	View of N and E elevation of the W extension to Building 10
53		NMGE13-055	SW	View of N and E elevation of the W extension to Building 10
54	1/5	NMGE13-056	SE	View of W elevation of the W extension to Building 10
55		NMGE13-057	SE	View of W elevation of the W extension to Building 10
56	1/4	NMGE13-058	E	Detail of the door phasing on the n side of the W elevation of Building 10
57	1/3	NMGE13-059		Interior of the N room in the W extension of Building 10
58		NMGE13-060		Interior of the N room in the W extension of Building 10
59	1/2	NMGE13-062		Interior of the S room in the W extension of Building 10



Shot	Slide film	Digital	Facing	Description
60		NMGE13-063		Interior of the S room in the W extension of Building 10
61	1\1	NMGE13-064		Detail of the door phasing on the S side of the E elevation of the W extension to Building 10
62		NMGE13-065		Detail of the door phasing on the S side of the E elevation of the W extension to Building 10
63	2\37	NMGE13-066		Film 2 ID shot
64	2\36	NMGE13-067	SE	Modern extension to the N side of Building 10
65	2\35	NMGE13-068	SW	Small extension to the N side of Building 10
66		NMGE13-069	SW	Small extension to the N side of Building 10
67	2\34	NMGE13-070	SW	Brick bays to the n side of Building 10
68	2\33	NMGE13-071	S	Door on the E side of the N elevation of Building 10
69		NMGE13-072	S	Door on the E side of the N elevation of Building 10
70	2\32	NMGE13-073	S	Door on the W side of the N elevation of Building 10
71		NMGE13-074	S	Door on the W side of the N elevation of Building 10
72	2\31	NMGE13-075	E	View of the W elevation of Building 10
73		NMGE13-076	E	View of the W elevation of Building 10
74	2\30	NMGE13-077	NE	View of the W elevation of Building 10
75		NMGE13-078	NE	View of the W elevation of Building 10
76	2\29	NMGE13-079	SE	General view of S side of Building 10
77		NMGE13-080	SE	General view of S side of Building 10
78	2\28	NMGE13-081	NW	General view of S side of Building 10
79		NMGE13-082	NW	General view of S side of Building 10
80	2\27	NMGE13-083	N	Detail of the E end of the S elevation of Building 10
81		NMGE13-084	N	Detail of the E end of the S elevation of Building 10
82	2\26	NMGE13-085	E	Interior view of the E wall of Building 10
83		NMGE13-086	E	Interior view of the E wall of Building 10
84	2\25	NMGE13-087	NW	Interior wall at the E end of Building 10
85		NMGE13-088	NW	Interior wall at the E end of Building 10
86	2\24	NMGE13-089	W	View of room unit 5 at e end of Building 10
87		NMGE13-090	W	View of room unit 5 at e end of Building 10
88	2\23	NMGE13-091	N	View of N interior wall of unit 4 in Building 10
89		NMGE13-092	N	View of N interior wall of unit 4 in Building 10
90	2\22	NMGE13-093	NE	View of E interior wall of unit 4 in Building 10
91		NMGE13-094	NE	View of E interior wall of unit 4 in Building 10
92	2\21	NMGE13-095	N	Blocked window and door on the N wall of unit 3, Building 10
93	2\20	NMGE13-097	S	Door and brick blocked window on the S wall of unit 3, Building 10

Shot	Slide film	Digital	Facing	Description
94	2\19	NMGE13-098	N	N interior wall of unit 2 in Building 10
95		NMGE13-099	N	N interior wall of unit 2 in Building 10
96	2\18	NMGE13-100	NW	W interior wall of unit 2 in Building 10
97		NMGE13-101	NW	W interior wall of unit 2 in Building 10
98	2\17	NMGE13-104	NW	Roof beams of unit 2 in Building 10
99	2\16	NMGE13-105	SW	S interior wall of unit 1 in Building 10
100		NMGE13-106	SW	S interior wall of unit 1 in Building 10
101	2\15	NMGE13-107	SE	General view of Building 8
102		NMGE13-108	SE	General view of Building 8
103	2\14	NMGE13-109	S	View of floors of demolished buildings to the W of Building 8
104	2\13	NMGE13-110	S	Detail of windows and door on the W end of the N wall of Building 8
105	2\12	NMGE13-111	SW	Detail of the E end of the N wall of Building 8
106	2\11	NMGE13-112	SW	Detail of the E end of the N wall of Building 8
107	2\10	NMGE13-113	SW	View of the E end of the N wall of Building 8
108		NMGE13-114	SW	View of the E end of the N wall of Building 8
109	2\9	NMGE13-115	NW	View of the exterior E wall of Building 8
110		NMGE13-116	NW	View of the exterior E wall of Building 8
111	2\8	NMGE13-117	NW	View of the exterior S wall of Building 8
112		NMGE13-118	NW	View of the exterior S wall of Building 8
113		NMGE13-119	NW	View of the exterior S wall of Building 8
114	2\7	NMGE13-120	NE	View of the exterior S wall of Building 8
115	2\6	NMGE13-121	W	View of the exterior E wall of Building 8
116		NMGE13-122	SW	View of the exterior E wall of Building 8
117	2\5	NMGE13-124	E	Interior end of E wall of Building 8
118	2\4	NMGE13-125	E	Interior end of E wall of Building 8
119		NMGE13-127	NW	Interior N wall at the e end of Building 8, Room 6
120	2\3	NMGE13-128	W	View through door of rooms in Building 8
121		NMGE13-129	W	View through door of rooms in Building 8
122		NMGE13-130	W	View through door of rooms in Building 8
123	2\2	NMGE13-131	W	View down corridor of Building 8
124		NMGE13-132	W	View down corridor of Building 8
125	2\1	NMGE13-133	W	View of roof supports in Building 8
126		NMGE13-134	S	S wall of rooms 8/9 in Building 8
127		NMGE13-136	S	S wall of room 13 in Building 8
128		NMGE13-137	NW	Looking into room 19 in Building 8
129		NMGE13-138	NW	Looking into room 19 in Building 8

Headland Archaeology

Shot	Slide film	Digital	Facing	Description	Shot	Slide film	Digital	Facing	Description
130		NMGE13-139	E	W side of partition wall to rooms 2 and 10 in Building 8	154		NMGE13-163		General site shots showing other buildings in the area
131		NMGE13-140	E	W side of partition wall to rooms 2 and 10 in Building 8	155		NMGE13-164		General site shots showing other buildings in the area
132		NMGE13-141	SE	W side of partition wall to rooms 2 and 10 in Building 8	156		NMGE13-165		General site shots showing other buildings in the area
133		NMGE13-142	SE	W side of partition wall to rooms 2 and 10 in Building 8	157		NMGE13-166		General site shots showing other buildings in the area
134		NMGE13-143	NW	Windows on the interior N wall of room 19, Building 8					
135		NMGE13-144	E	Looking through room 19 to the E end of Building 8					
136		NMGE13-145	E	Looking through room 19 to the E end of Building 8					
137		NMGE13-146	E	Looking down the corridor of Building 8					
138		NMGE13-147		General site shots showing other buildings in the area					
139		NMGE13-148		General site shots showing other buildings in the area					
140		NMGE13-149		General site shots showing other buildings in the area					
141		NMGE13-150		General site shots showing other buildings in the area					
142		NMGE13-151		General site shots showing other buildings in the area					
143		NMGE13-152		General site shots showing other buildings in the area					
144		NMGE13-153		General site shots showing other buildings in the area					
145		NMGE13-154		General site shots showing other buildings in the area					
146		NMGE13-155		General site shots showing other buildings in the area					
147		NMGE13-156		General site shots showing other buildings in the area					
148		NMGE13-157		General site shots showing other buildings in the area					
149		NMGE13-158		General site shots showing other buildings in the area					
150		NMGE13-159		General site shots showing other buildings in the area					
151		NMGE13-160		General site shots showing other buildings in the area					
152		NMGE13-161		General site shots showing other buildings in the area					
153		NMGE13-162		General site shots showing other buildings in the area					



Appendix 2 Discovery and Excavation in Scotland

LOCAL AUTHORITY:	City of Edinburgh
PROJECT TITLE/SITE NAME:	National Museums, Granton: A standing building survey
PROJECT CODE:	NMGE13
PARISH:	Granton, City of Edinburgh
NAME OF CONTRIBUTOR:	Donald Wilson
NAME OF ORGANISATION:	Headland Archaeology Ltd
TYPE(S) OF PROJECT:	Historic Building Survey
NMRS NO(S):	None
SITE/MONUMENT TYPE(S):	None
SIGNIFICANT FINDS:	None
NGR (2 letters, 8 or 10 figures)	NGR: NT 22813 76897
START DATE (this season)	February 2013
END DATE (this season)	February 2013
PREVIOUS WORK (incl. DES ref.)	none
MAIN (NARRATIVE) DESCRIPTION: (May include information from other fields)	<p>Headland Archaeology was commissioned by National Museums of Scotland (NMS) to undertake a programme of building recording at the NMS collection centre on West Granton Road, Edinburgh. This report forms a basic written, metric and photographic record of the buildings.</p> <p>The continued expansion of the NMS collection centre required the demolition of three brick constructed single storey buildings dating from the late 1940s to early 1950s. At the time of the survey these buildings were in a moderate state of repair and had been stripped of all modern internal fixtures and fittings. The buildings were part of a larger complex of buildings located to the west of the existing collection centre and comprised two storage buildings and an office block.</p> <p>The work undertaken as part of the current project enabled a preliminary phasing of some elements of the buildings. These included the insertion and blocking of windows and doors and the construction of two new gable ends. The buildings were constructed to re-train demobbed soldiers returning to the UK after WWII.</p>
PROPOSED FUTURE WORK:	None
CAPTION(S) FOR ILLUSTRS:	
SPONSOR OR FUNDING BODY:	National Museums of Scotland
ADDRESS OF MAIN CONTRIBUTOR:	13 Jane Street Edinburgh EH6 5HE
EMAIL ADDRESS:	don.wilson@headlandarchaeology.com
ARCHIVE LOCATION (intended/deposited)	NMRS



© 2013 by Headland Archaeology (UK) Ltd

**Headland Archaeology
North East**

13 Jane Street
Edinburgh EH6 5HE

0131 467 7705
northeast@headlandarchaeology.com

**Headland Archaeology
North West**

10 Payne Street
Glasgow G4 0LF

0141 354 8100
northwest@headlandarchaeology.com

**Headland Archaeology
Midlands & West**

Unit 1, Premier Business Park, Faraday Road
Hereford HR4 9NZ

01432 364 901
midlandsandwest@headlandarchaeology.com

**Headland Archaeology
South & East**

Building 68A, Wrest Park, Silsoe
Bedfordshire MK45 4HS

01525 861 578
southandeast@headlandarchaeology.com

www.headlandarchaeology.com