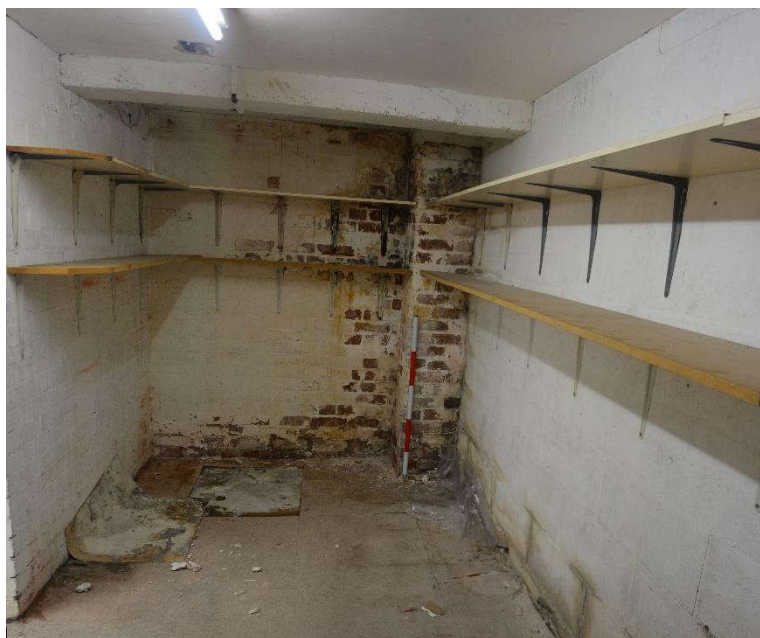




Illus. 20. Panorama of Room LG. 7 from its eastern side, looking west to north



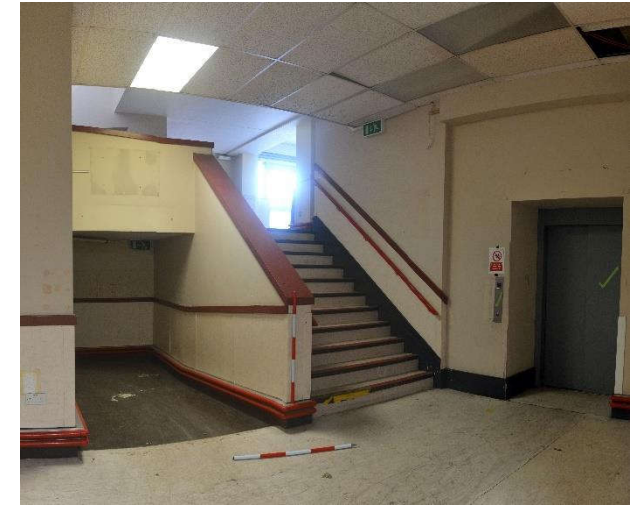
Illus. 18. Largely unaltered segregated area of Room LG. 7 in its north-eastern corner, looking north



Illus. 19. Room LG. 8 from its northern end, looking south



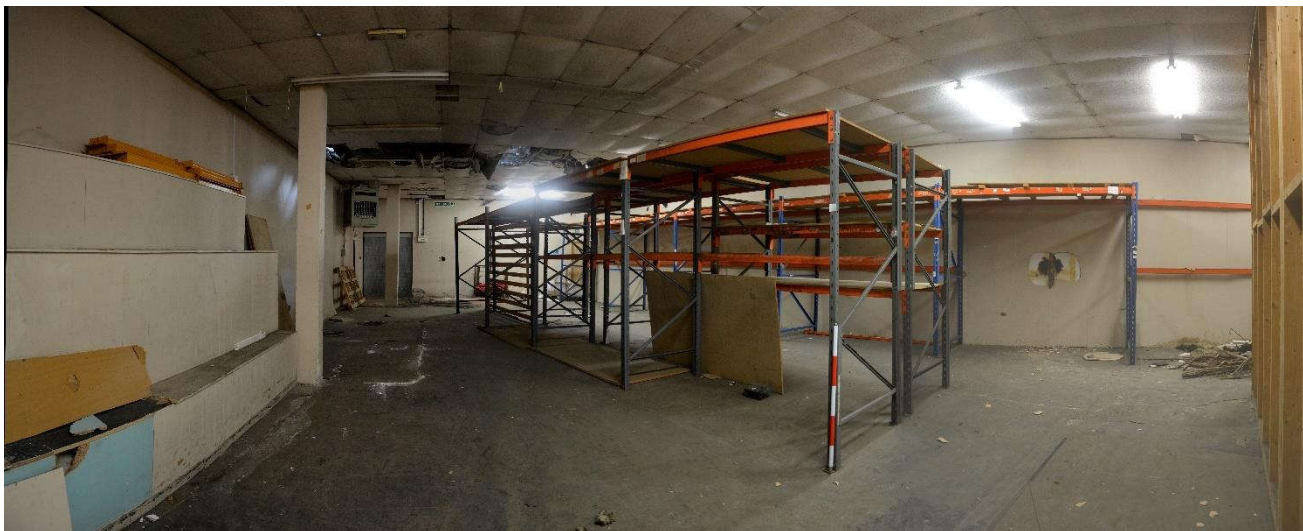
Illus. 21. Panorama of entrance from Gardiner Haskins car park (right of frame) into Room LG. 10 and Room G. 2, looking west to north



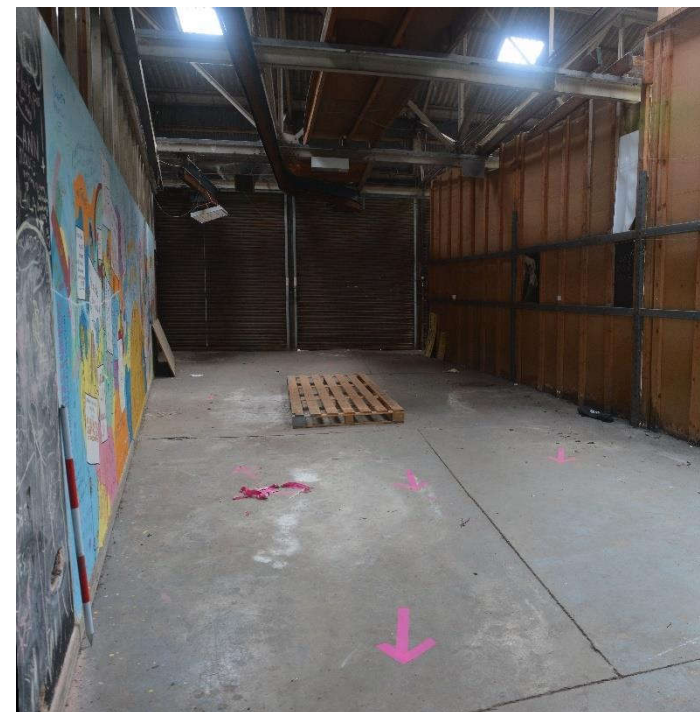
Illus. 22. View of Room LG. 10 from main entrance into lower ground floor towards main entrance from car park, looking south-east



Illus. 23. Panorama of retail area of Room LG. 11 from its western side, looking north-east to south-east



Illus. 24. Storage area of Room LG. 11 from its western side, looking south-east



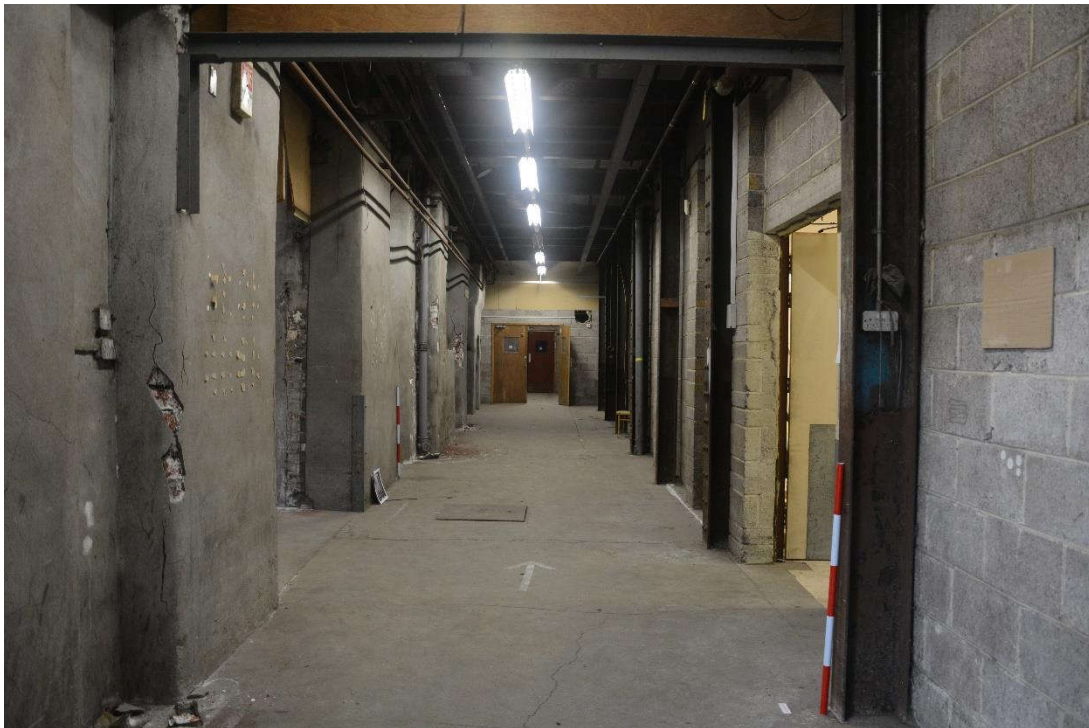
Illus. 26. Northern segregated area off Room LG. 12 from its western side, looking south-east



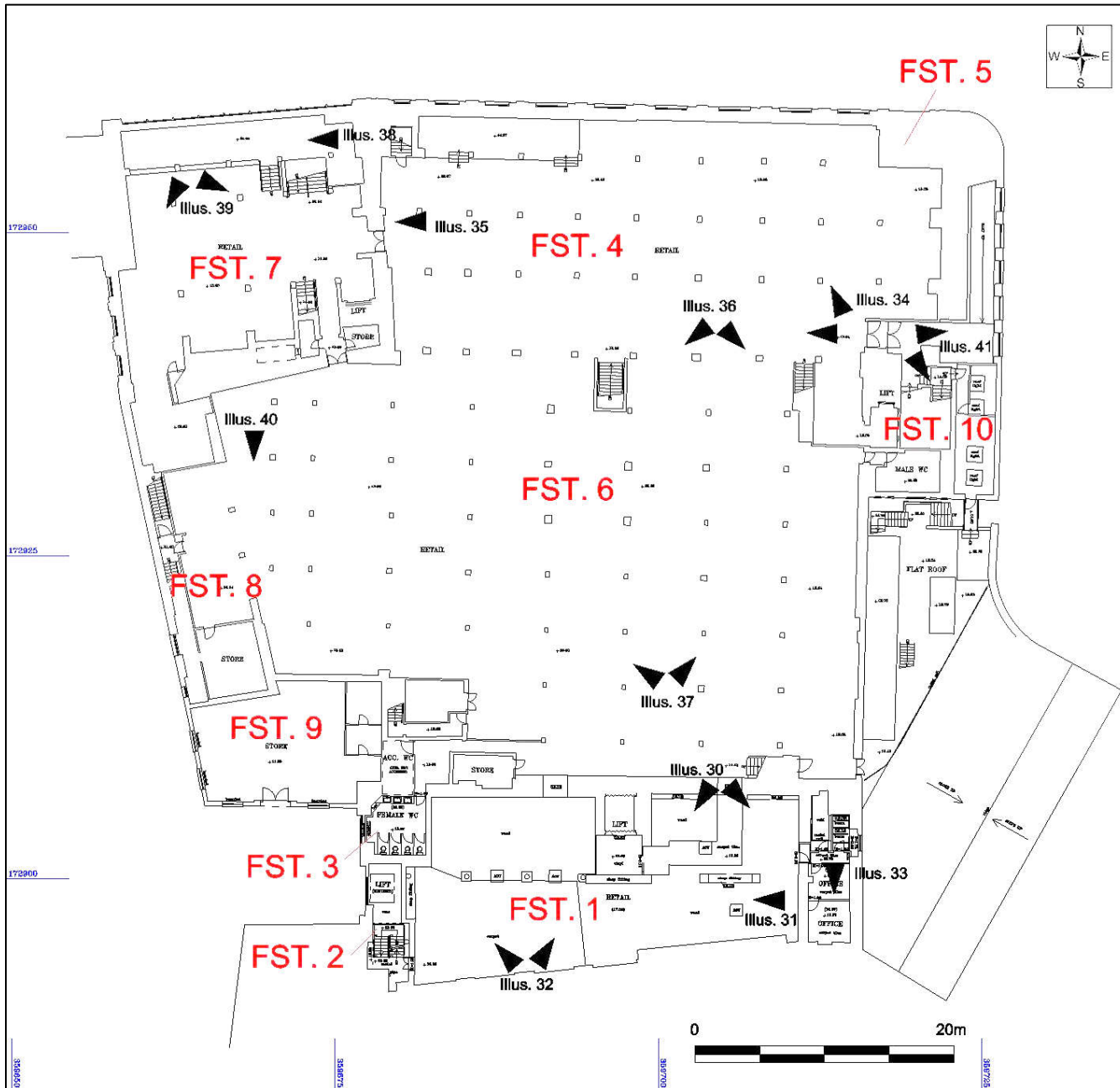
Illus. 25. Northern half of Room LG. 12 from its western side, looking south-east to south



Illus. 27. Southern half of Room LG. 12 from its northern half, looking south-west



Illus. 28. Room LG. 13 from its eastern end, looking west



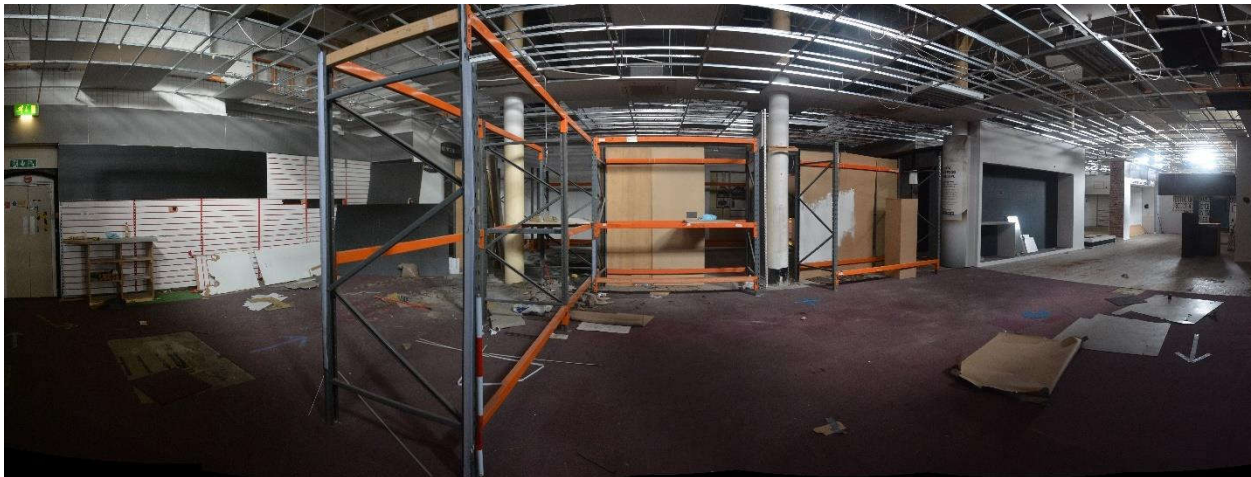
Illus. 29. First floor (Buildings 1 – 7) showing rooms and photograph locations



Illus. 32. Panorama of Room FST. 1 from its northern side, looking south-east to south-west.



Illus. 31. Panorama of Room FST. 1 from its eastern side, looking west.



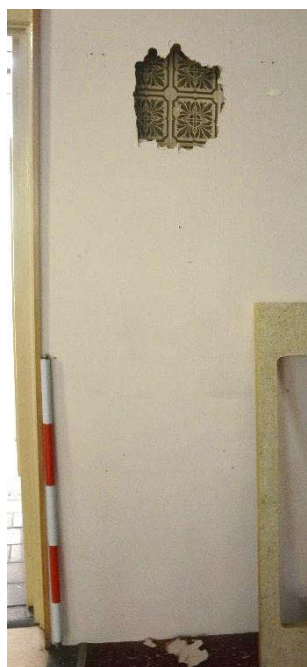
Illus. 30. Panorama of Room FST. 1 from its south-western corner, looking north-west to north-east.



Illus. 36 (left). Offices in eastern side of Room FST. 1, looking south.



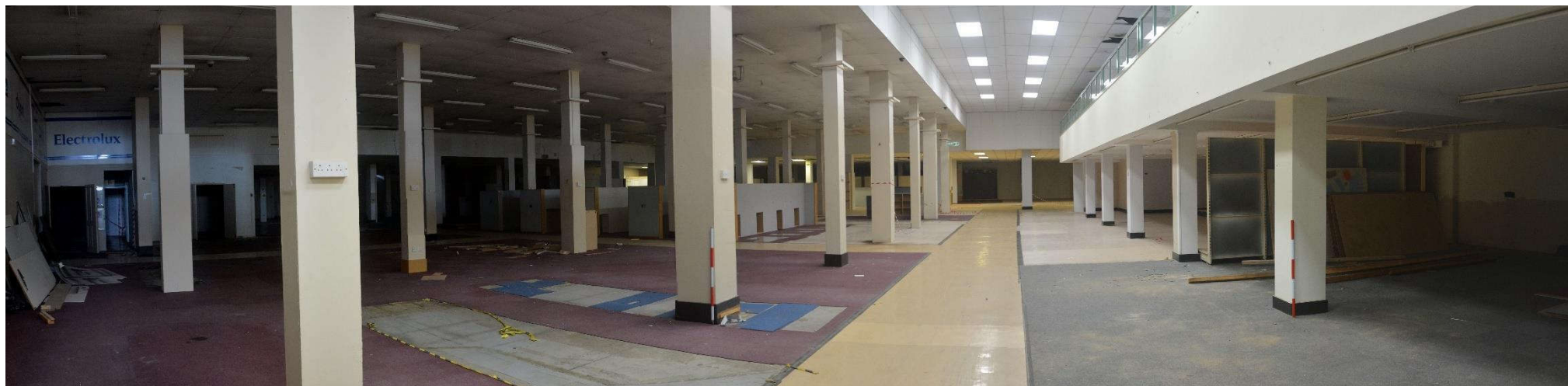
Illus. 33. Room FST. 4 from its eastern side, looking west to north-west



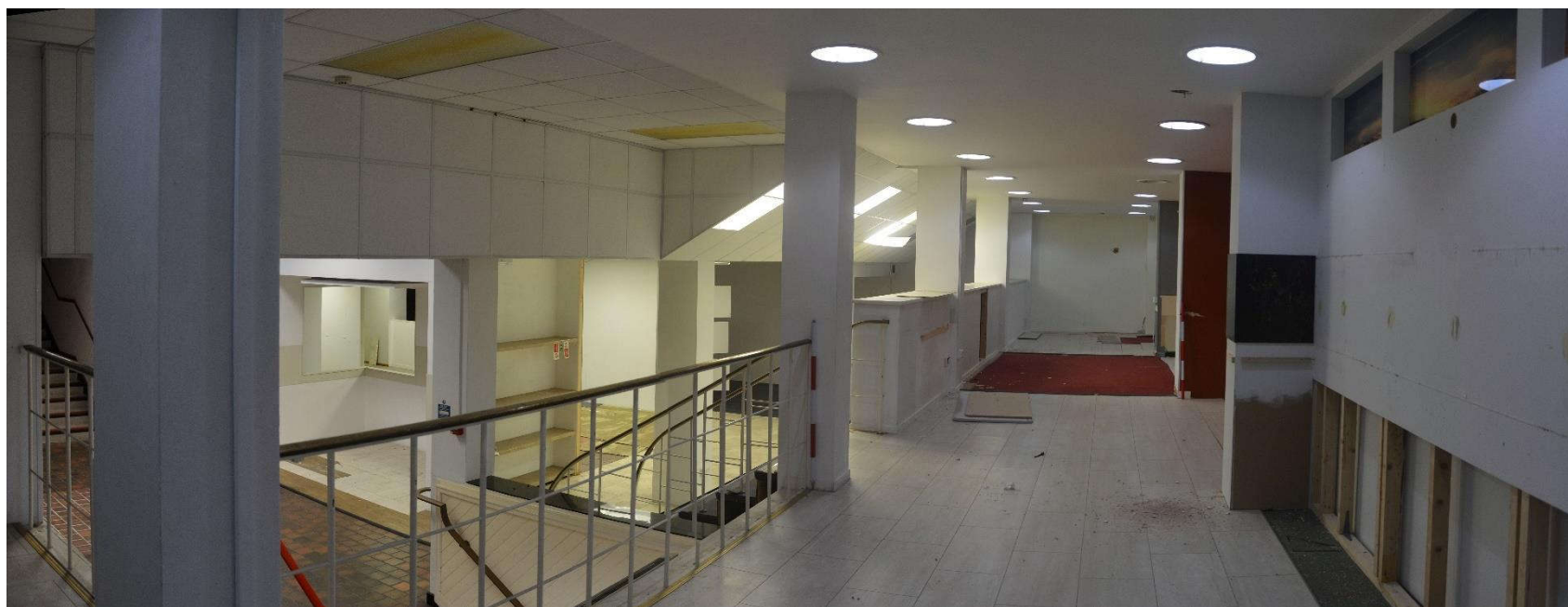
Illus. 35 (left). Decorated wall tiles seen behind stud walling in western side of Room FST. 4, looking west



Illus. 34. Panorama of Room FST. 6 from its northern side, looking south-east to south-west.



Illus. 37. Panorama of Room FST. 6 from its southern side, looking north-west to north-east



Illus. 38. Mezzanine floor on northern side of Room FST. 7, looking west



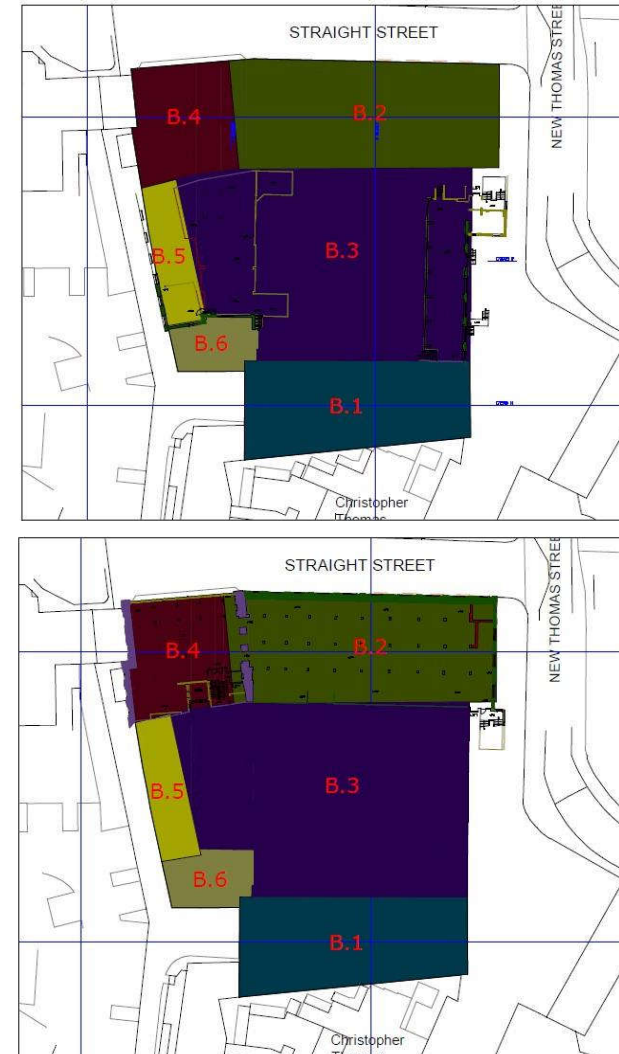
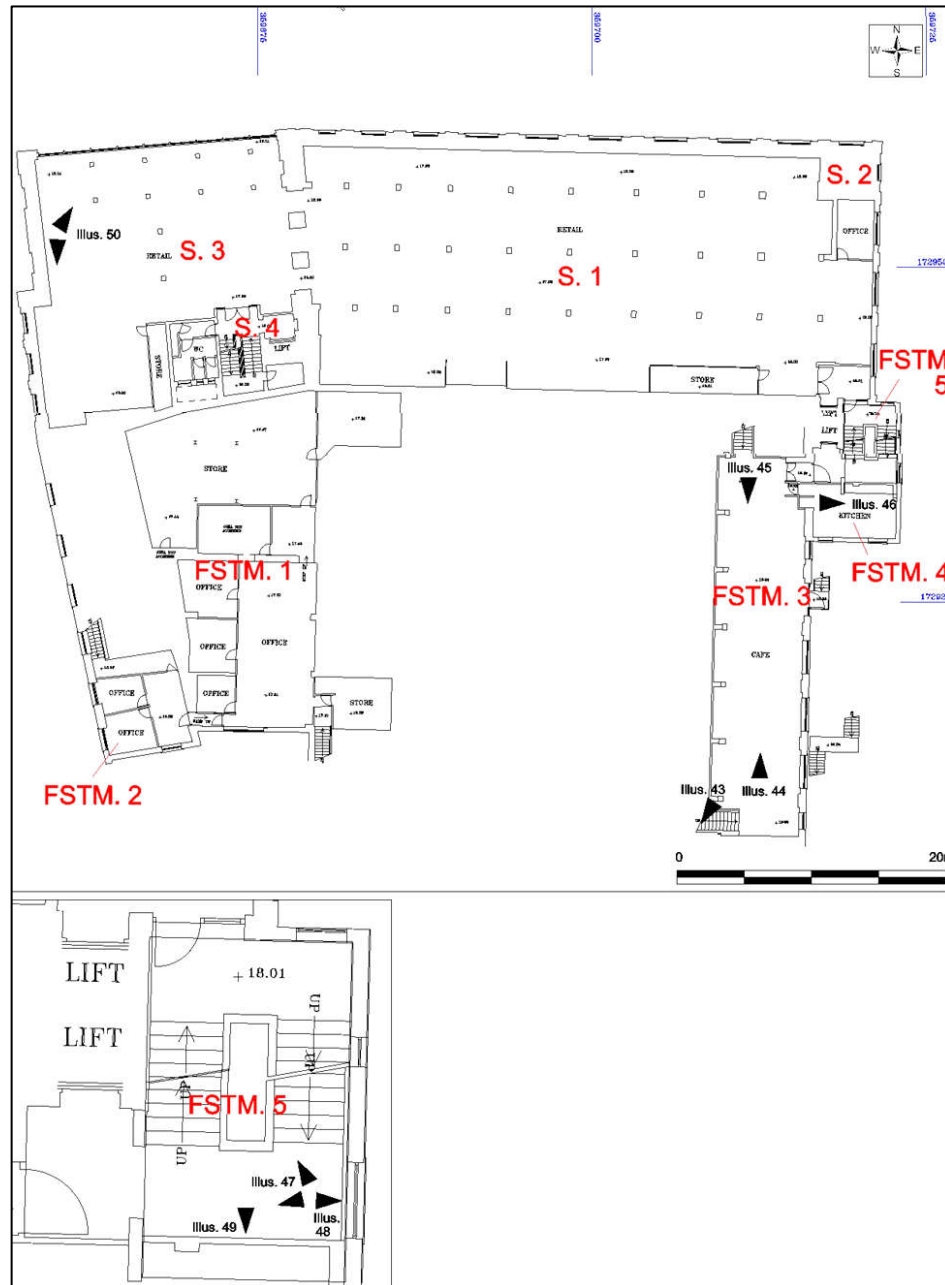
Illus. 39. Panorama of Room FST. 7 from its northern end, looking south-east to south-west



Illus. 40. Room FST. 8 from its northern end, looking south



Illus. 41. Room FST. 10 from its western side, looking east to south-east



Illus. 42. First floor mezzanine and second floor (Buildings 2 – 7) room and photograph locations (detail of Room FSTM.5 in bottom left of the image)



Illus. 43 (above). Historic fabric behind stud walling on staircase between Room FST. 6 and FSTM.3, looking south-west



Illus. 45. Room FSTM. 3 from its eastern side, looking west



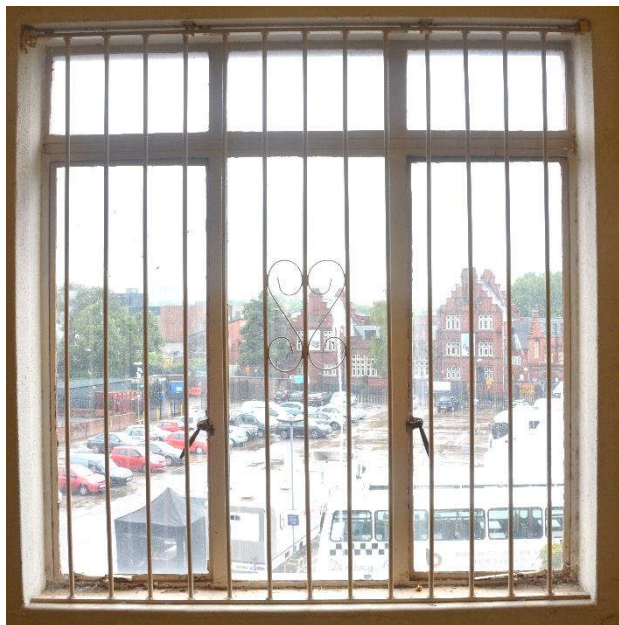
Illus. 44 (right). Room FSTM. 3 from its western side, looking east



*Illus. 49 (left).
Room FSTM.
4 from its
western side,
looking east*



*Illus. 48 (left).
Room FSTM. 5
from its
eastern side,
looking west
to north-west*



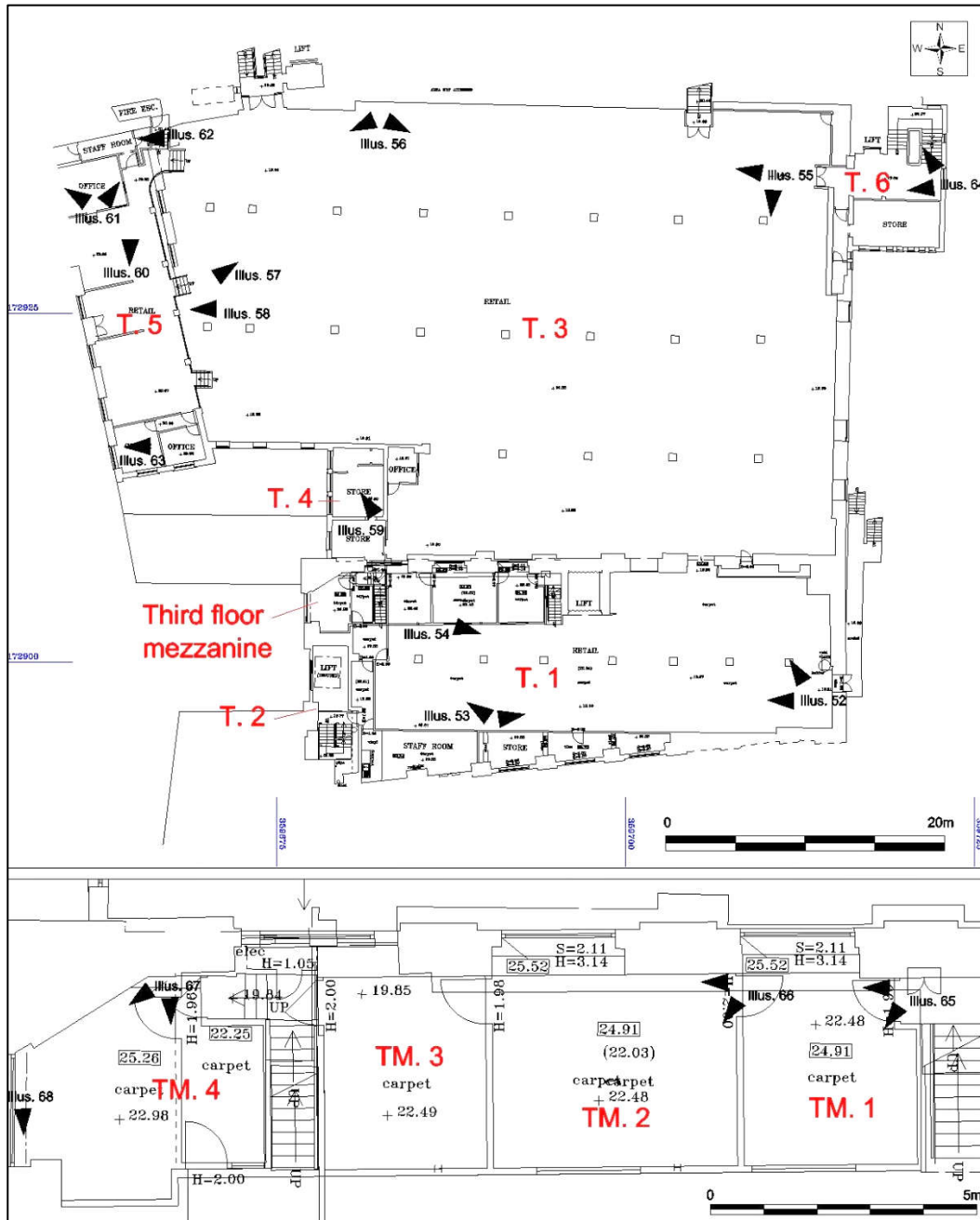
*Illus. 46 (left).
Decorative
window in Room
FSTM. 5, looking
east*



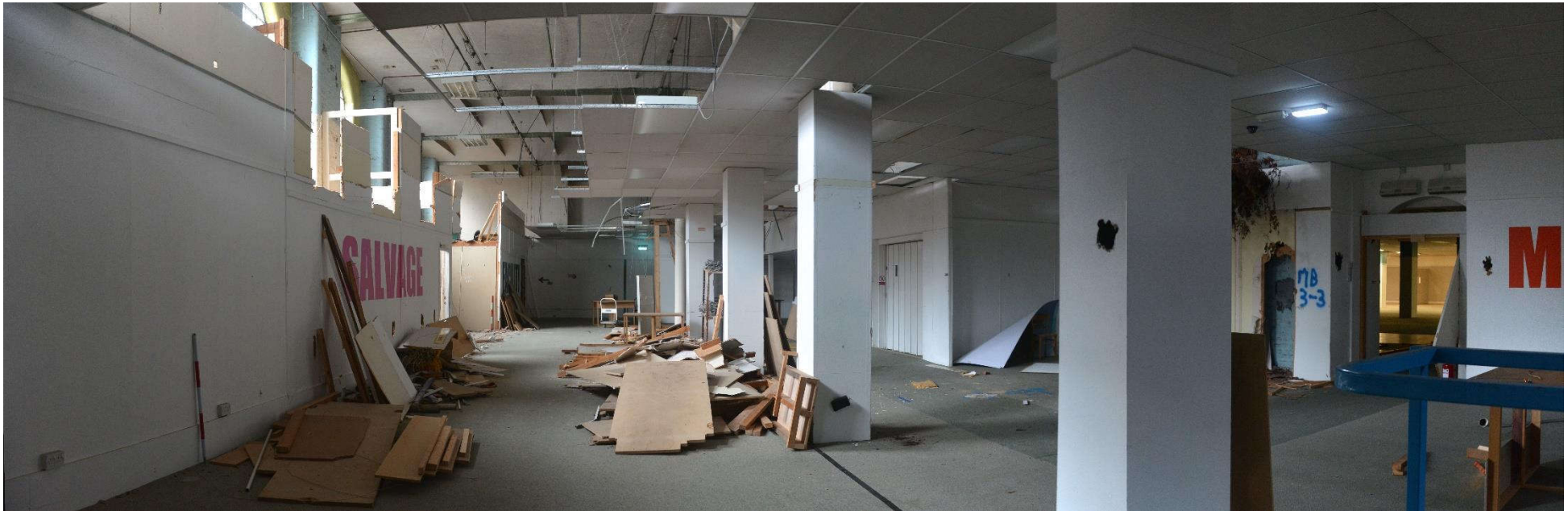
*Illus. 47 (left).
Decorative
wooden
radiator
panel in
Room FSTM.
5, looking
south*



Illus. 50. Panorama of Room S. 3, looking north-east to south



Illus. 51. Third floor and third floor mezzanine (Buildings 1, 3, 5 and 7) room and photograph locations. Detailed plan of mezzanine floor inset into the bottom of the image



Illus. 52. Panorama of Room T. 1 from its south-eastern corner, looking west to north-west



Illus. 53. Panorama of Room T. 1 from its south-western end, looking north-west to east



Illus. 55 (left). View of suspended ceiling in Room T. 1 from Room TM.2, looking east-south-east



Illus. 54 (below). Panorama of Room T. 3 from its north-eastern corner, looking south to west



Illus. 56 (above). Panorama of Room T. 3 from its north-western end, looking south-east to south-west

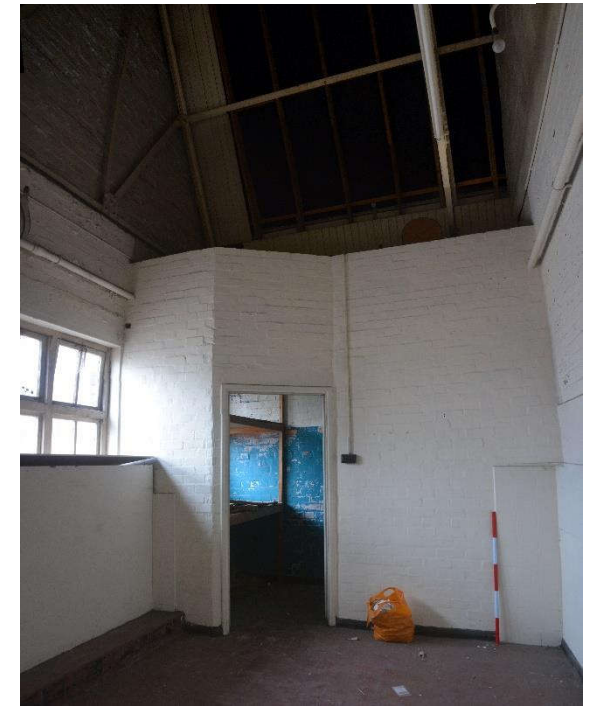
Illus. 57 (below). Room T. 4, looking north-west



Illus. 58. Exposed roof of Room T. 3, looking north-east



Illus. 59. Light switch attached to pillar in Room T. 3, looking west





Illus. 60 (left). Room T. 5 from its northern end, looking south



Illus. 62 (above). Staff room at north end of Room T. 5, looking west



Illus. 61 (left). Representative example of office in Room T. 5, looking north-west to north-west



Illus. 63 (left). Exposed roof girders in ceiling of southern office of Room T. 5, looking west



Illus. 64 (right). Room T. 6, looking west to north-west



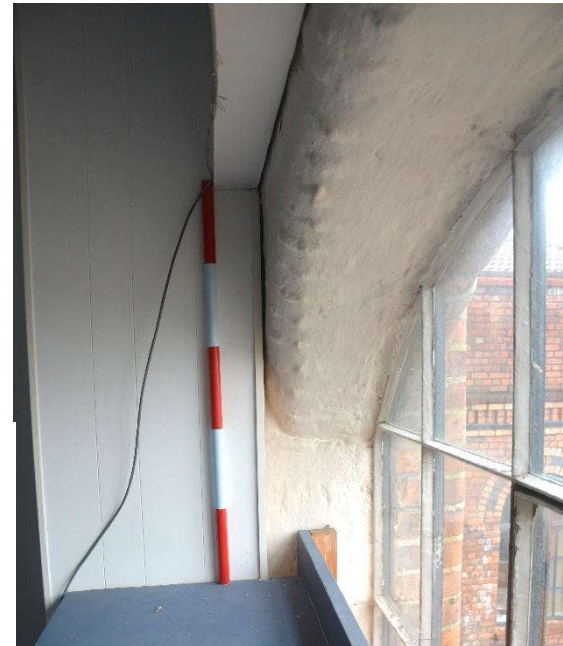
*Illus. 68 (left).
Room TM. 1,
looking south-
west to west*



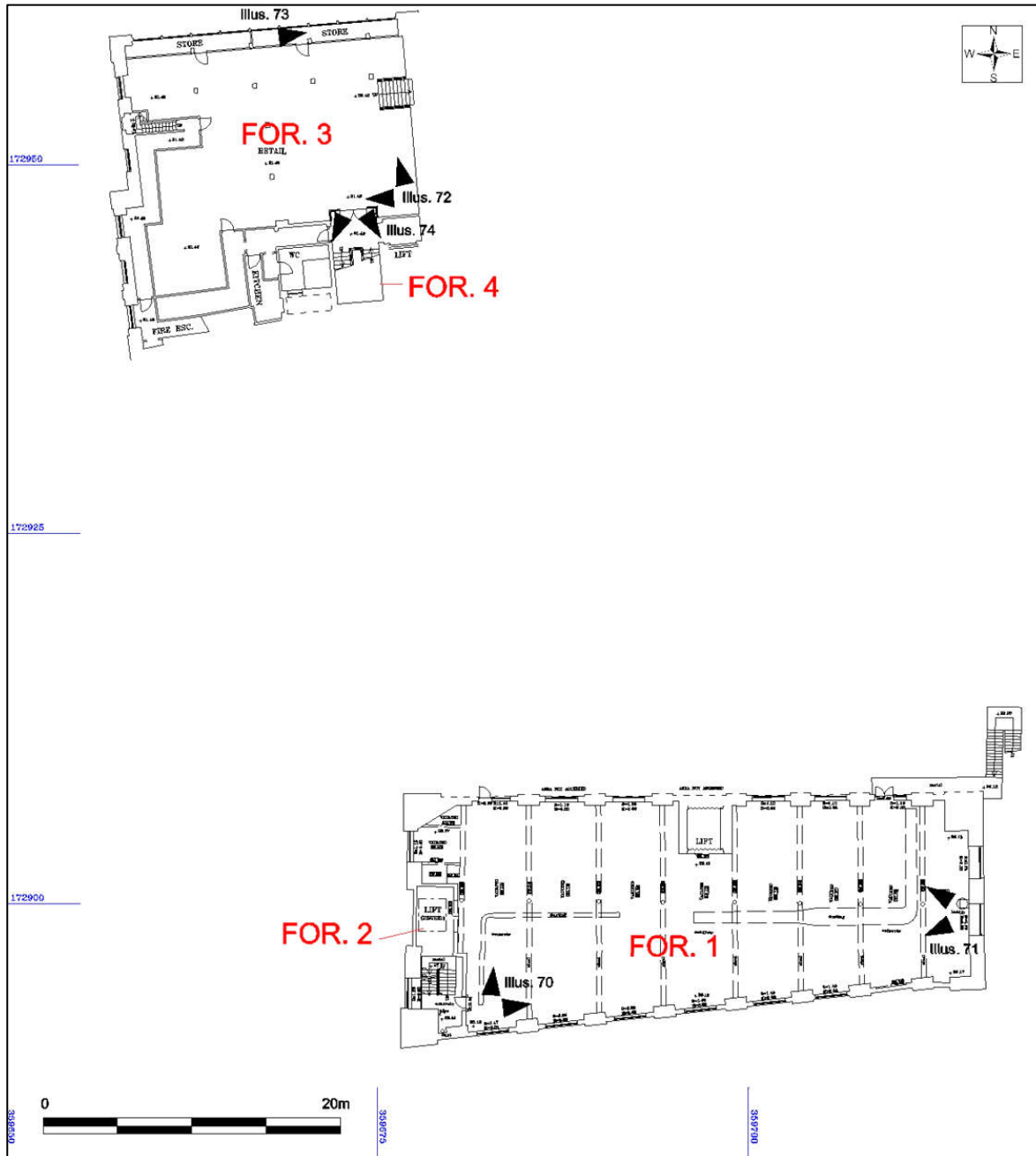
*Illus. 67 (right).
Room TM. 2,
looking south-
west to west*



*Illus. 66 (left).
Room TM. 4,
looking south
to south-west*



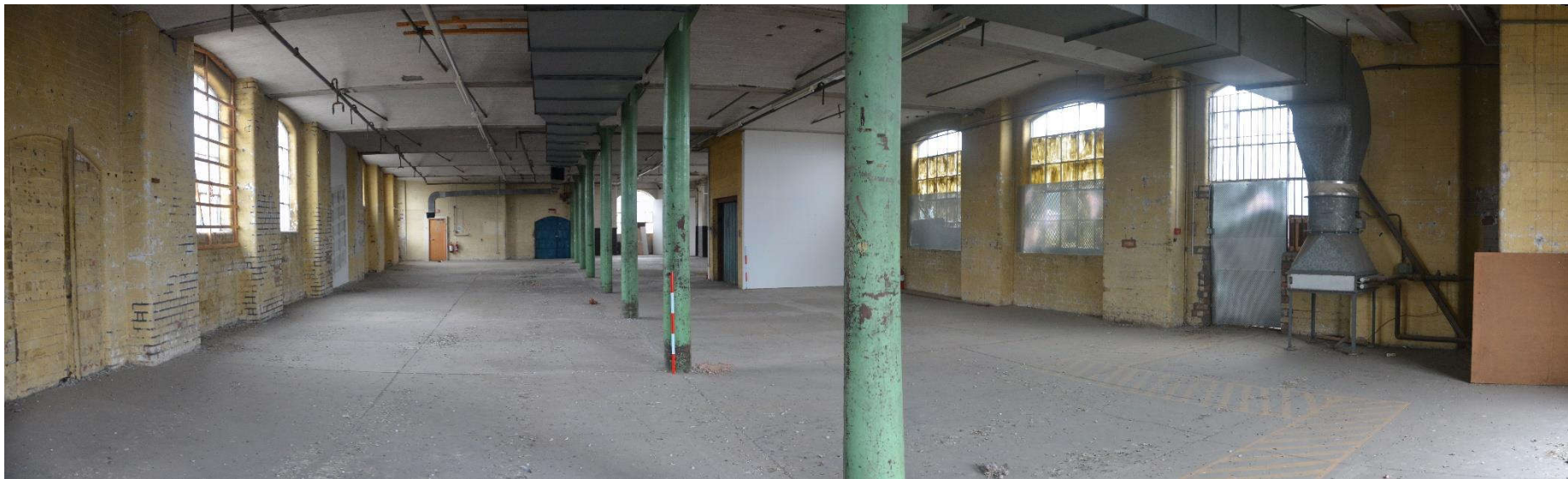
*Illus. 65 (right).
Stud walling
erected against
historic
building fabric
in Room TM. 4,
looking south*



Illus. 69. Fourth floor (Buildings 1 and 4) room and photograph locations



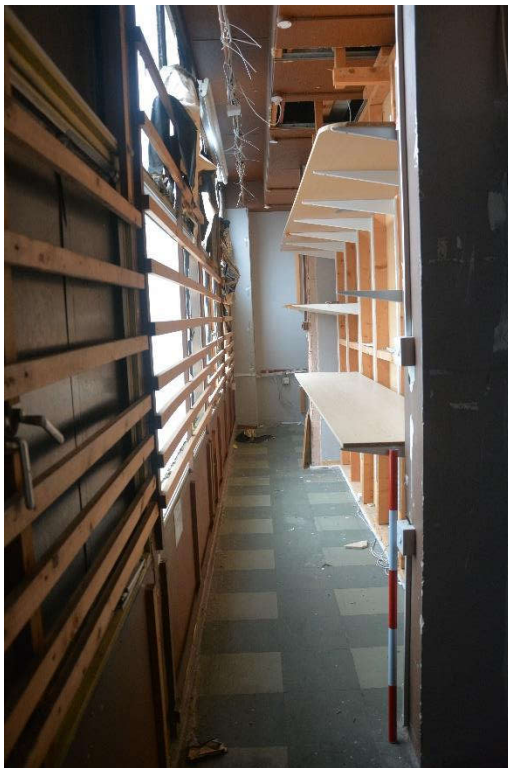
Illus. 71. Panorama of Room FOR. 1 from its south-western corner, looking north to east



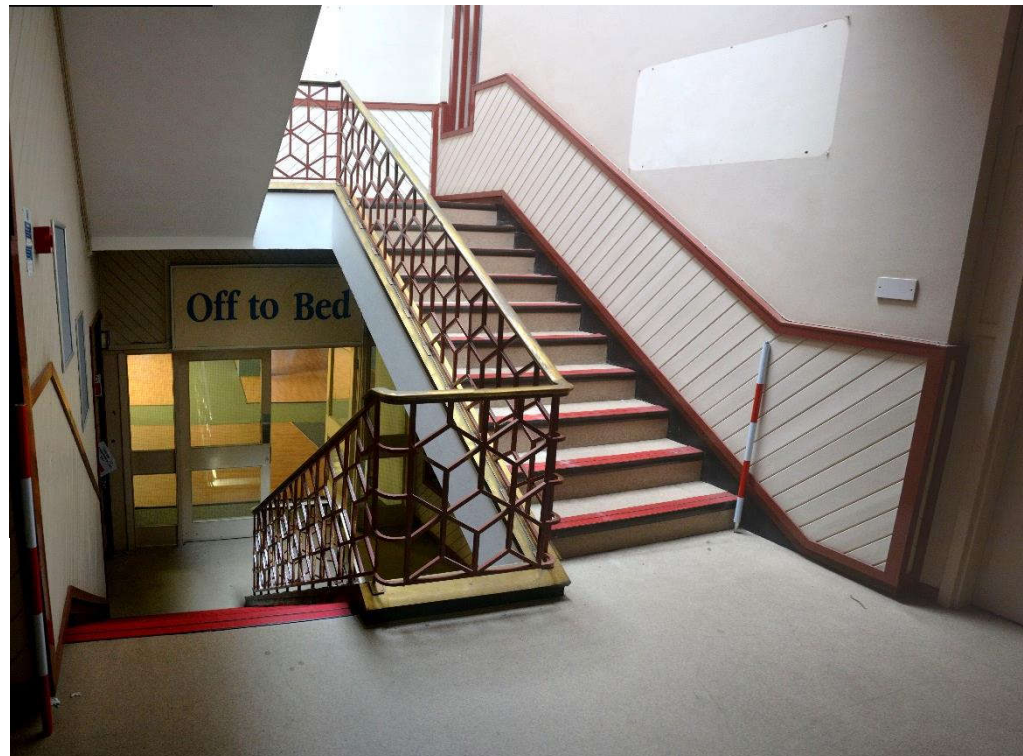
Illus. 70. Panorama of Room FOR. 1 from its eastern side, looking south-west to north-west



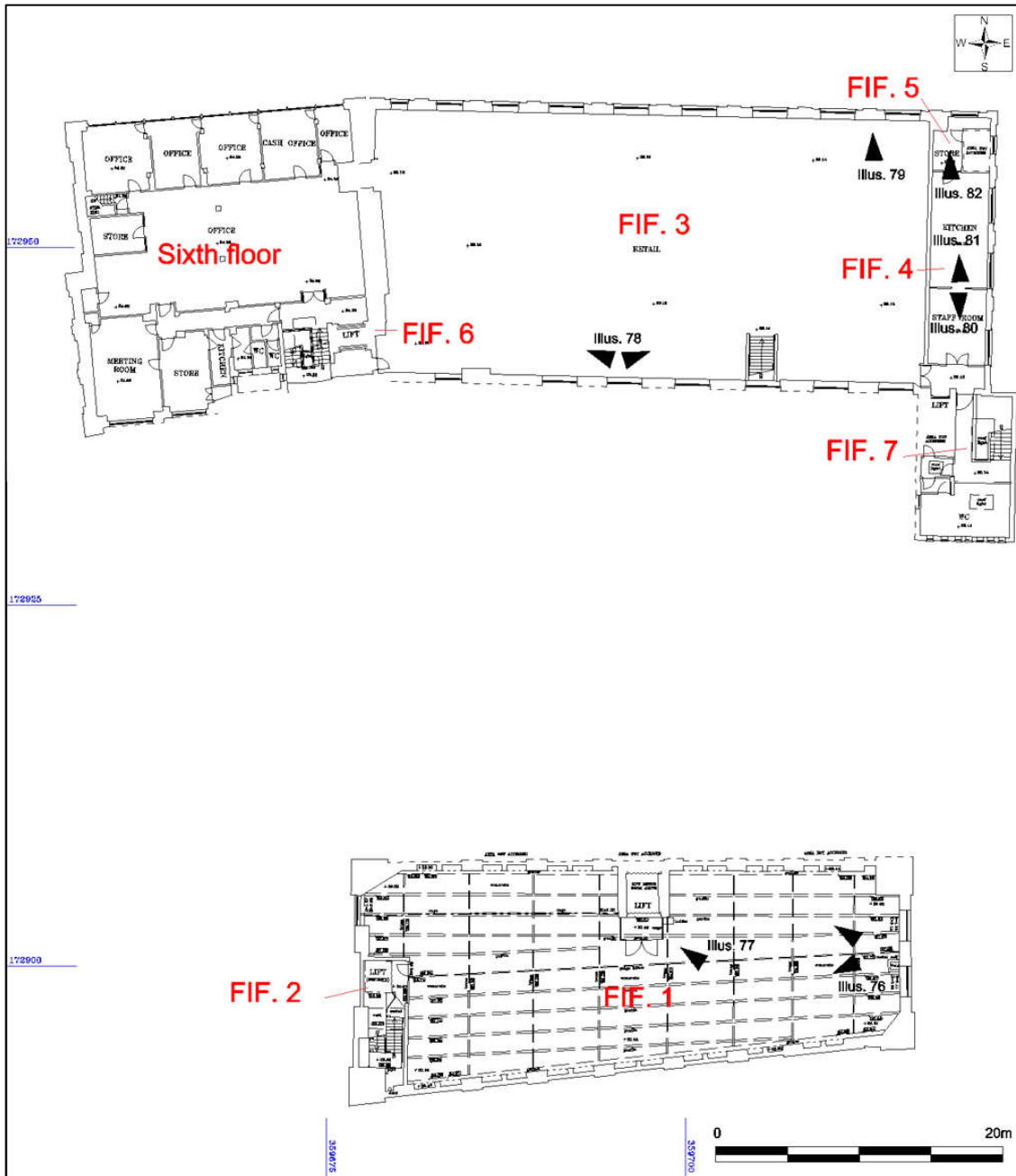
Illus. 72. Panorama of Room FOR. 3 from its south-eastern corner, looking west to north



Illus. 73. Storage area created in space between historic building fabric and stud wall of Room FOR. 4's northern side, looking east



Illus. 74. Room FOR. 4, looking south-east to south-west



Illus. 75. Fifth floor (Buildings 1, 2, 4 and 7) room and photograph locations



Illus. 76. Panorama of Room FIF.1 from its eastern end, looking south-west to north-west



Illus. 77. Metal storage area for Gardiner Haskins in north-west corner of Room FIF. 1 and lift



Illus. 78. Panorama of Room FIF. 3 from its southern side, looking west to east



*Illus. 79 (left).
Exposed radiator
in northern wall
of Room FIF. 3,
looking north*



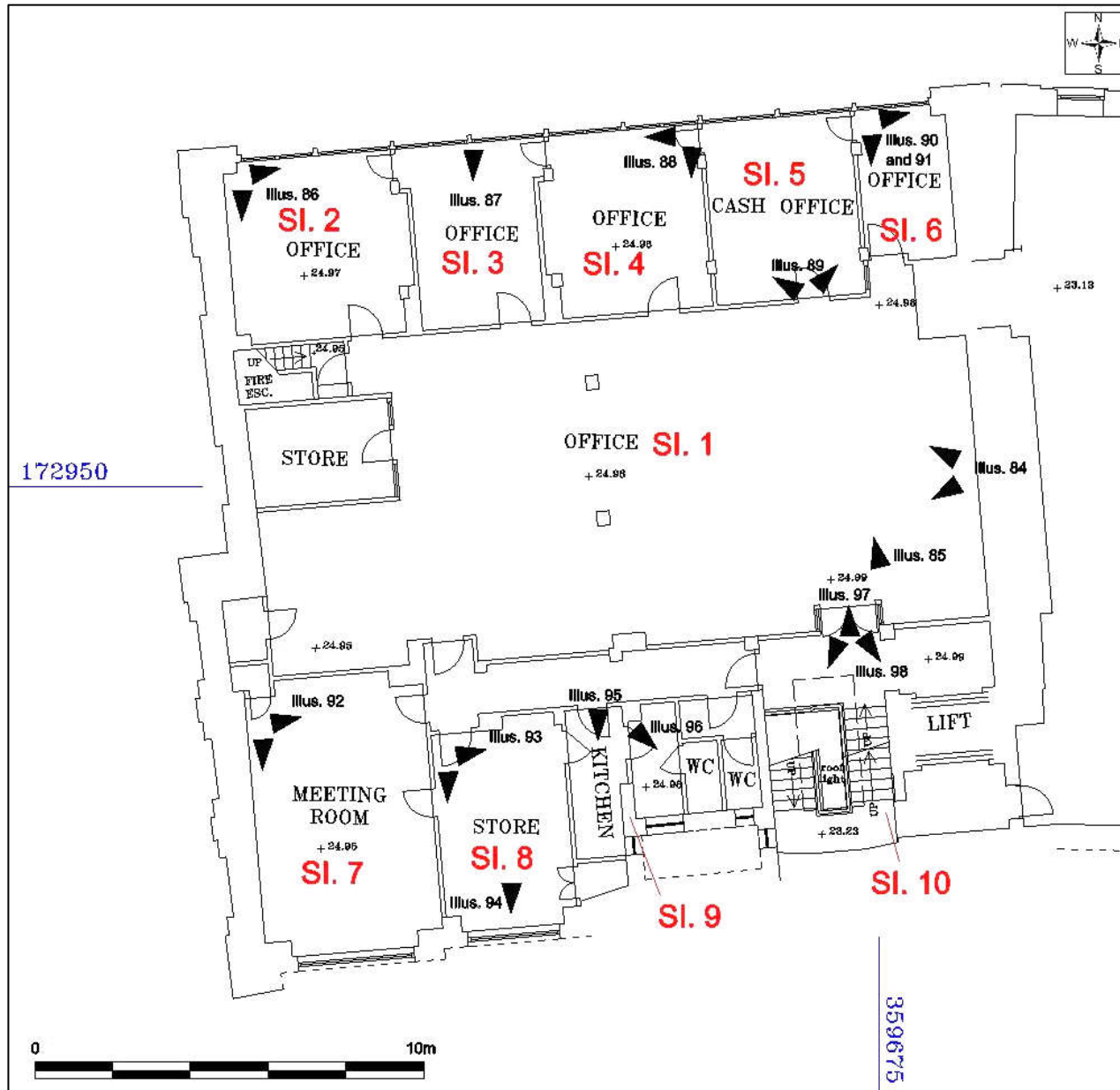
*Illus. 80 (left). Southern
half of Room FIF. 4,
looking south*



*Illus. 81 (left).
Northern
half of Room
FIF. 3,
looking
north*



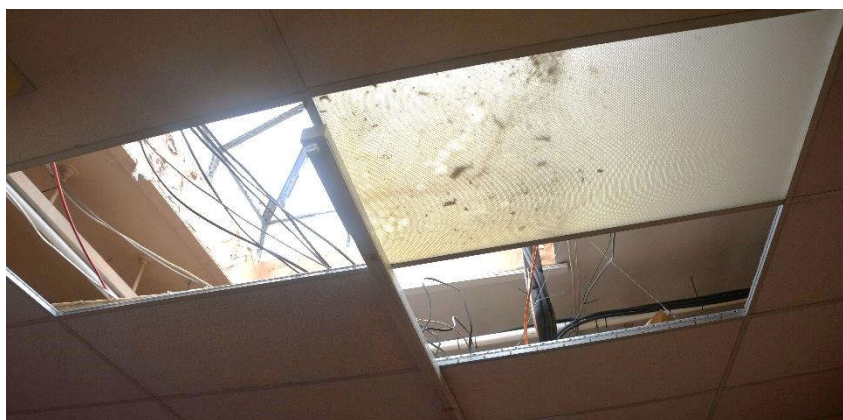
*Illus. 82
(left).
Room
FIF. 5,
looking
north*



Illus. 83. Sixth floor (Building 4) room and photograph locations



Illus. 85. Panorama of Room SI. 1 from its eastern side, looking south-west to north-west



Illus. 84. Exposed roof behind suspended ceiling in Room SI. 1, looking north



Illus. 86. Room SI. 2 from its north-western corner, looking east to south



Illus. 87. Room SI. 3 from its northern side, looking south



Illus. 88. Room SI. 4 from its north-eastern corner, looking south to west



Illus. 90. Room SI. 5 from its southern side, looking north



Illus. 89. Room SI. 6 from its north-western corner, looking east to south



Illus. 92. Exposed earlier ceiling in Room SI. 6, looking south



Illus. 91. Room SI. 7 from its north-western corner, looking east to south

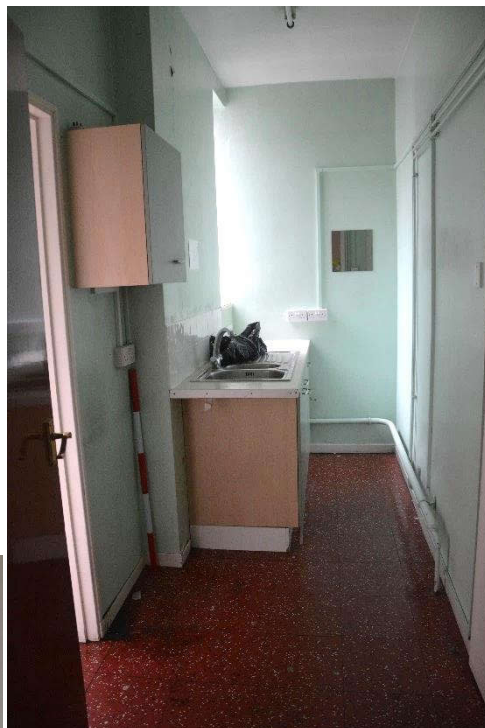


Illus. 93. Room SI. 8 from its north-western corner, looking east to south

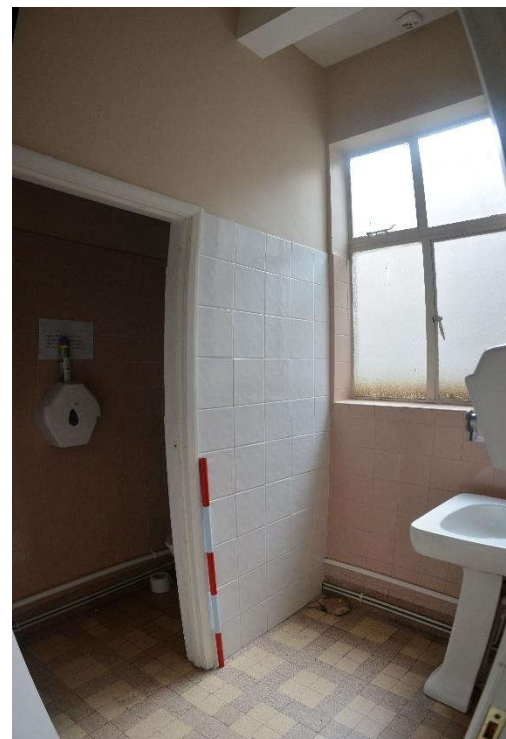


Illus. 94. Window seat in Room SI. 8

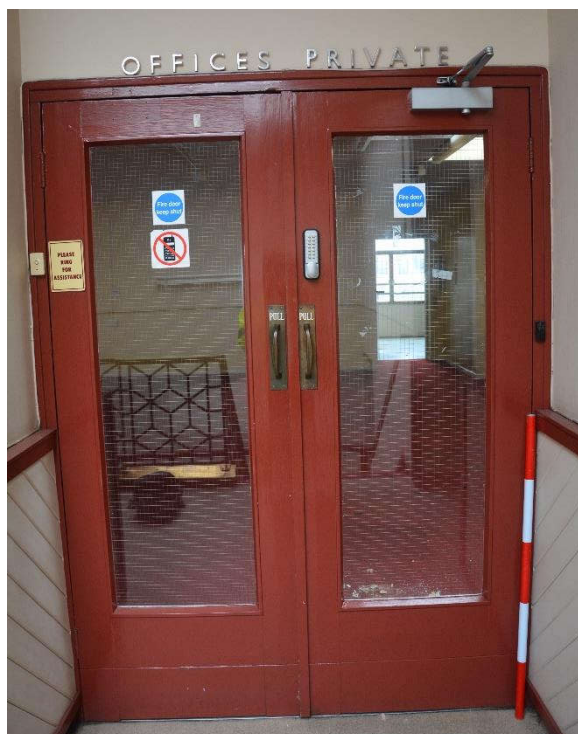
Illus. 98 (left). Kitchen area of Room Sl. 9, looking south



Illus. 97 (right). W.C area of Room Sl. 9, looking south-east



Illus. 96 (below). Door to Room Sl. 10, looking north



Illus. 95 (right). Room Sl. 10, looking south-east to south-west

