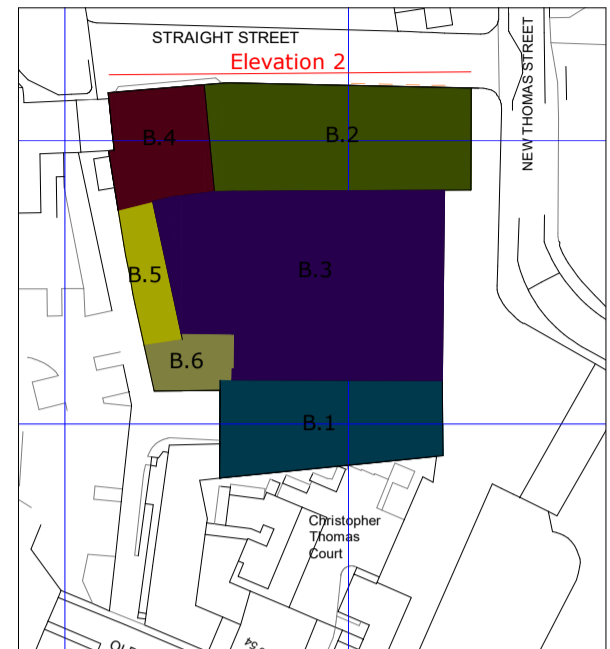


Figure 5



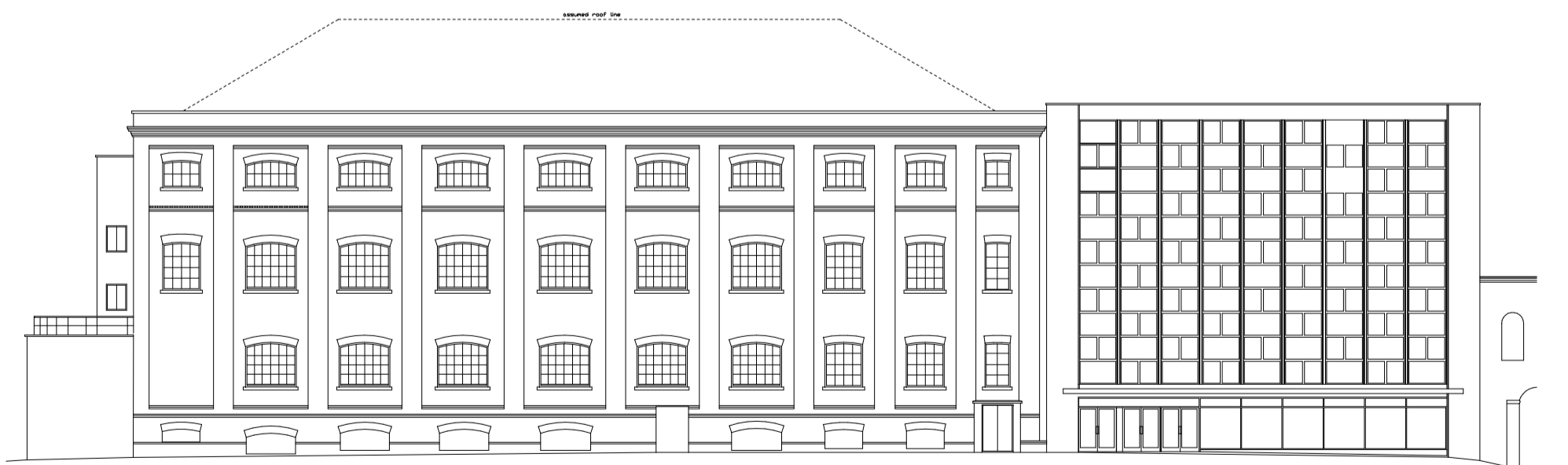
Elevation 2 - North Facing (Buildings 2 & 4)



Plate 3



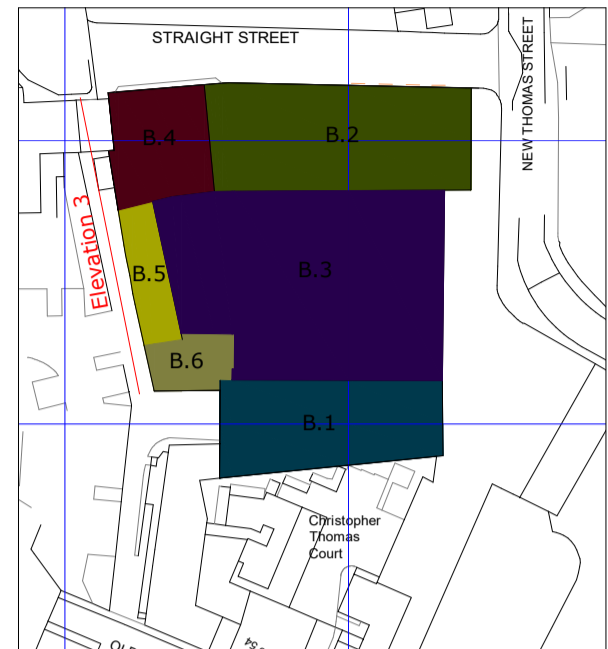
Plate 4



7.00m aOD

0m 25m

Figure 6



Elevation 3 - West Facing (Buildings 4, 5 & 6)



Plate 5



Figure 7

Elevation 4 - South Facing (Buildings 1)



Plate 6

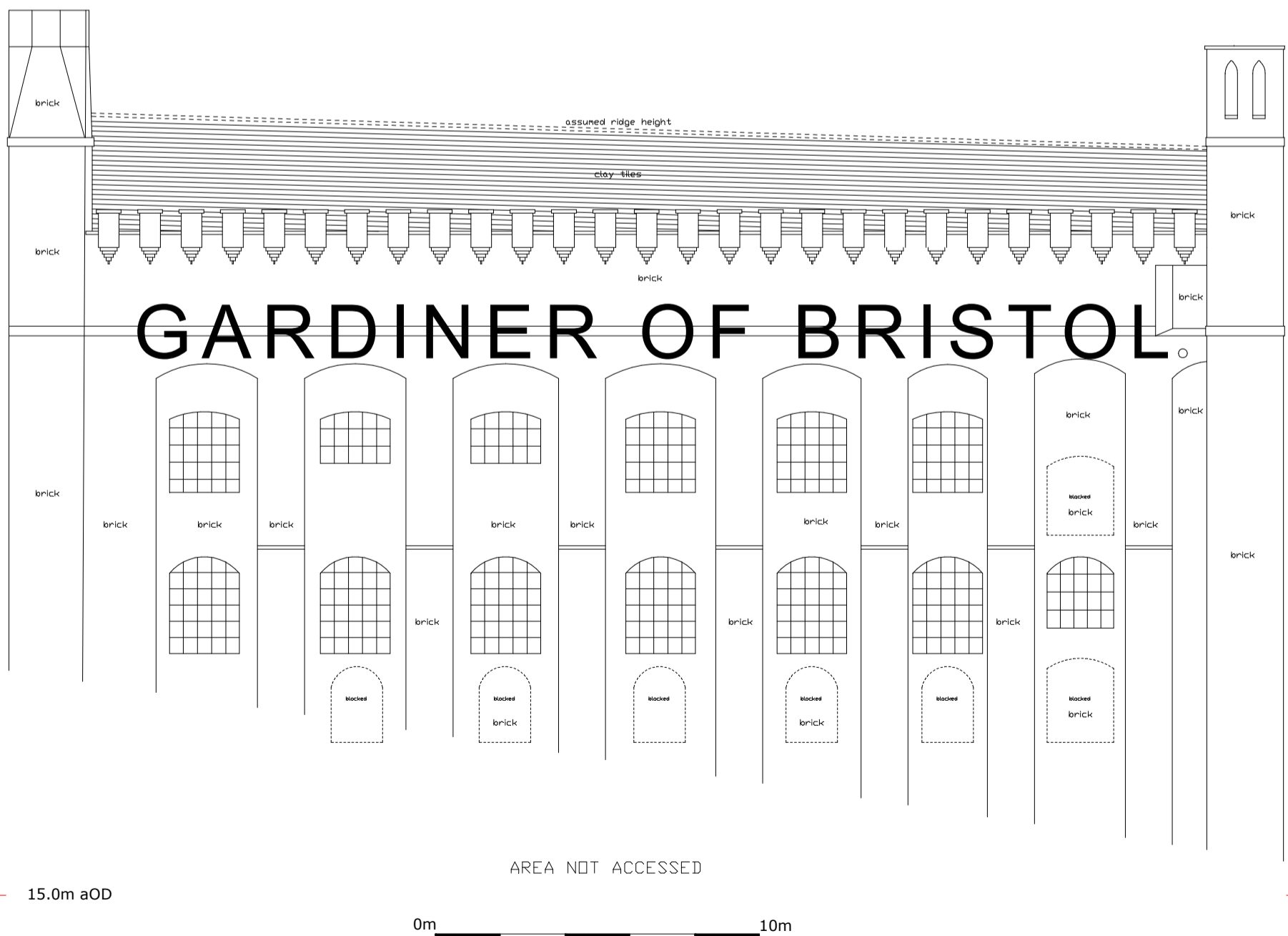


Figure 8

Elevation 5 - North Facing (Building 1)

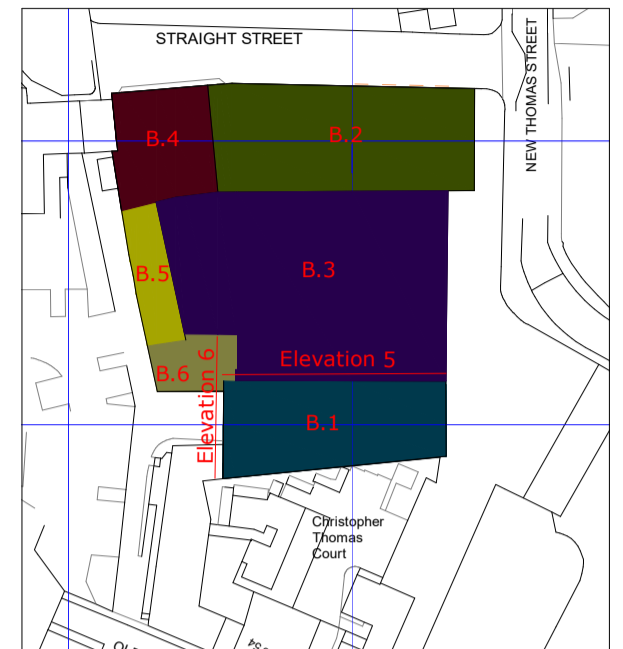
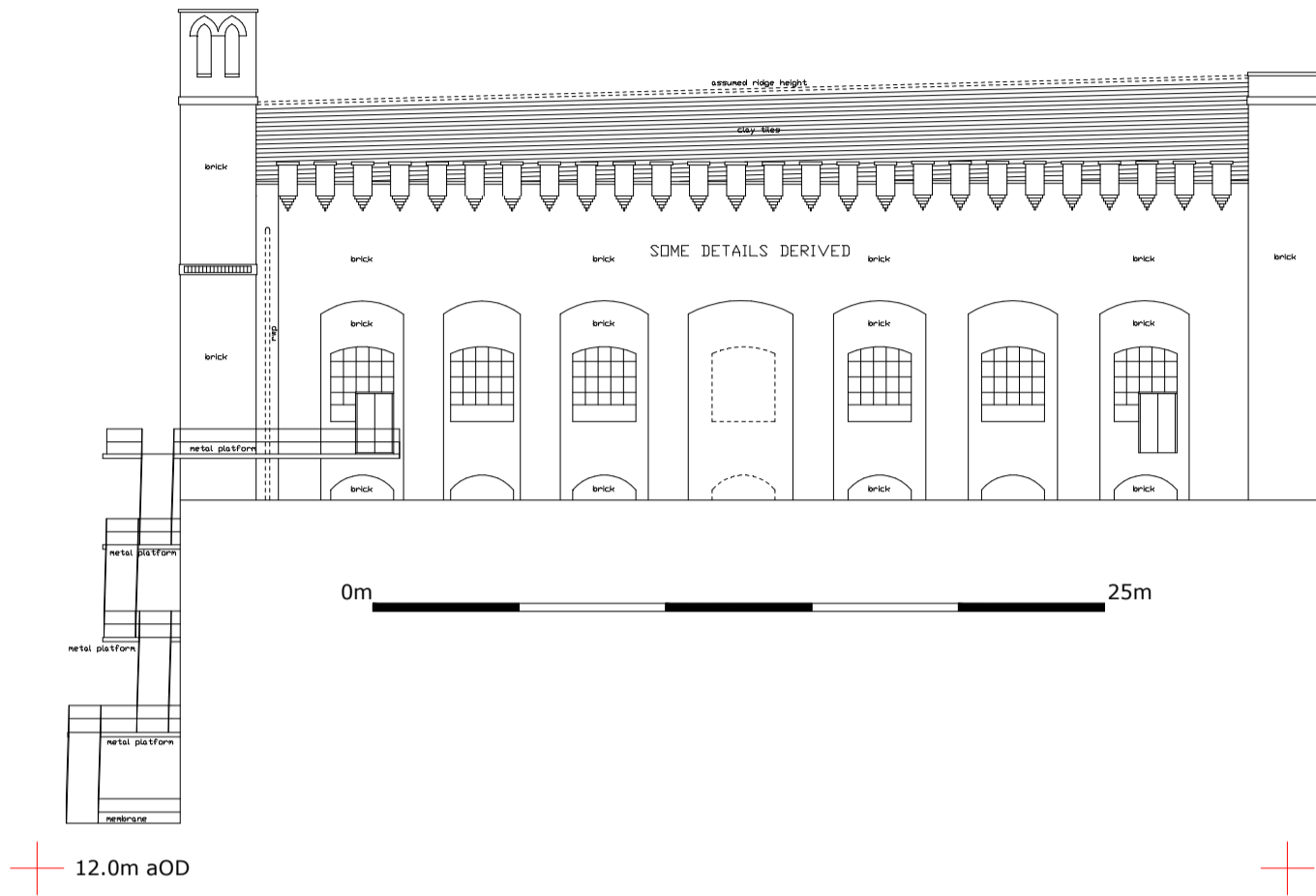


Plate 7

Elevation 6 - West Facing (Buildings 1 & 3)

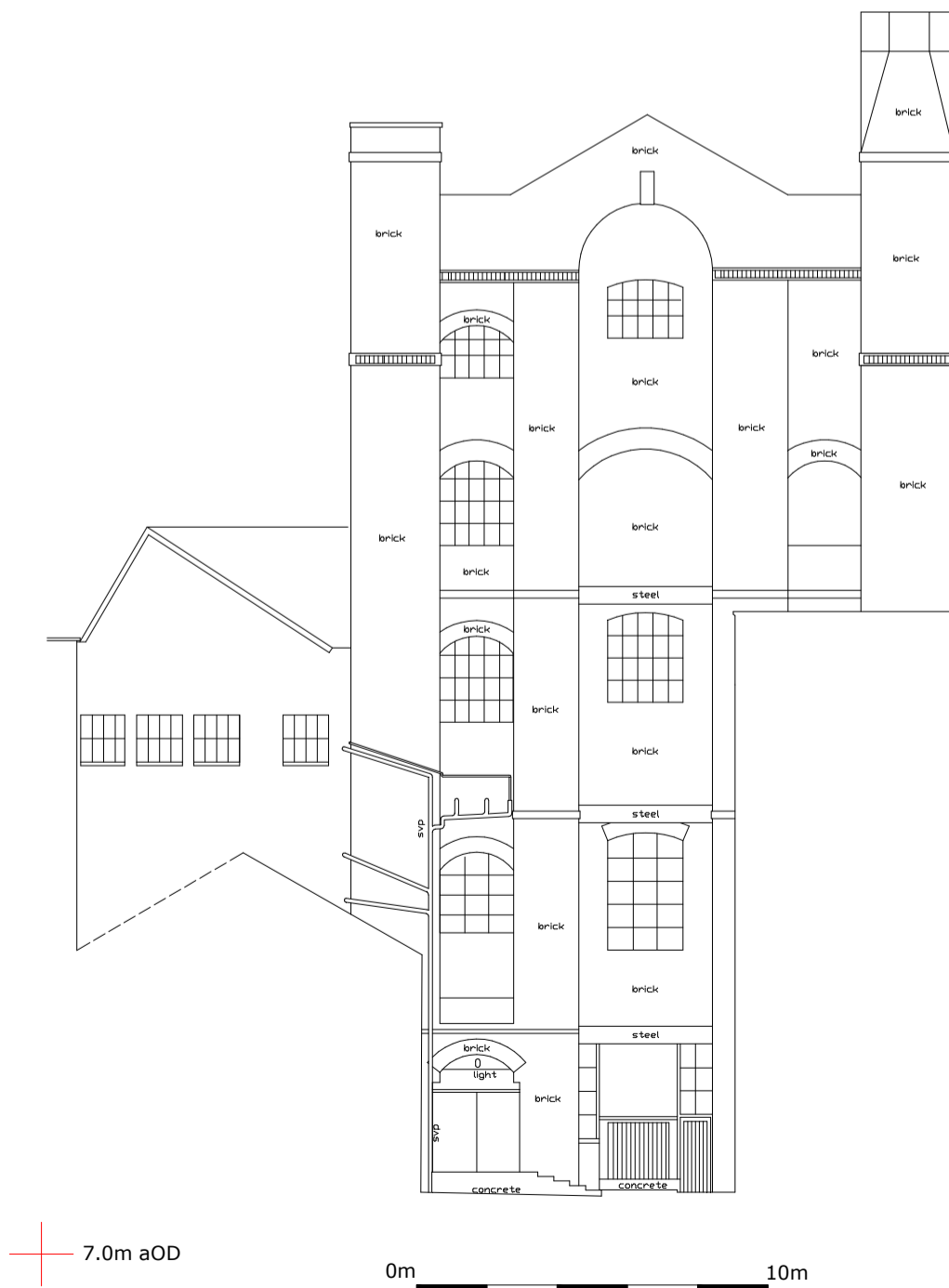
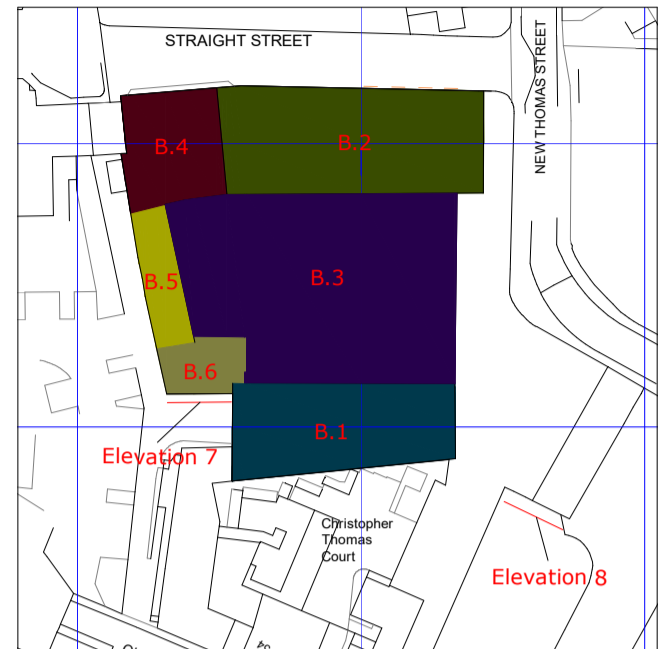


Plate 8

Figure 9



Elevation 7 - South Facing (Buildings 5 & 6)



Plate 9

Elevation 8 - South Facing (Other Buildings)

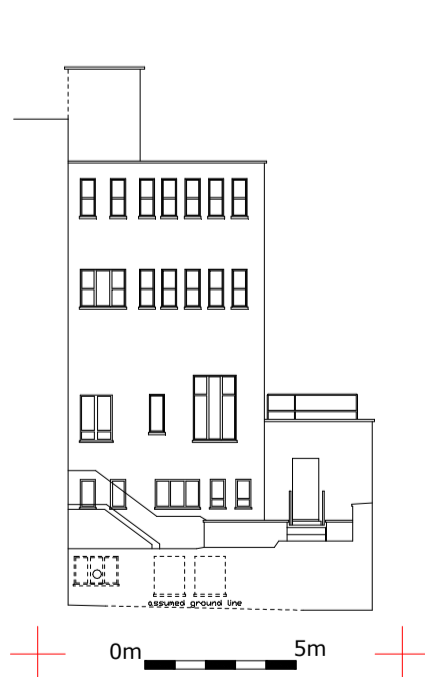


Plate 10

Figure 10

Elevation 9 - South-East Facing (Other Buildings)

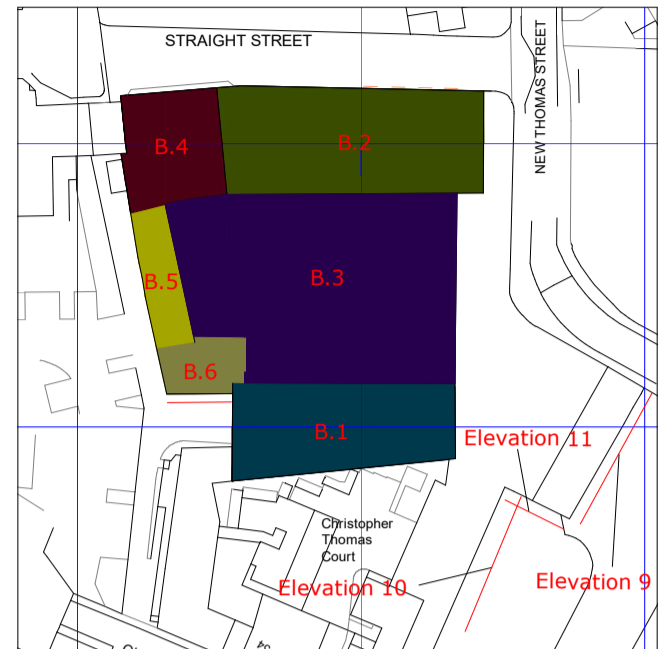
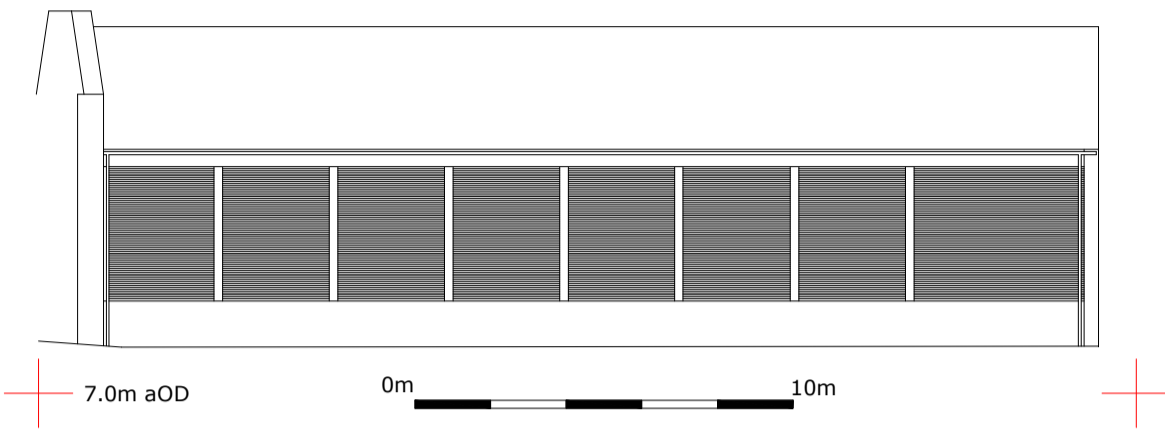


Plate 11

Elevation 10 - South-East Facing (Other Buildings)



Elevation 11 - South-West Facing (Other Buildings)

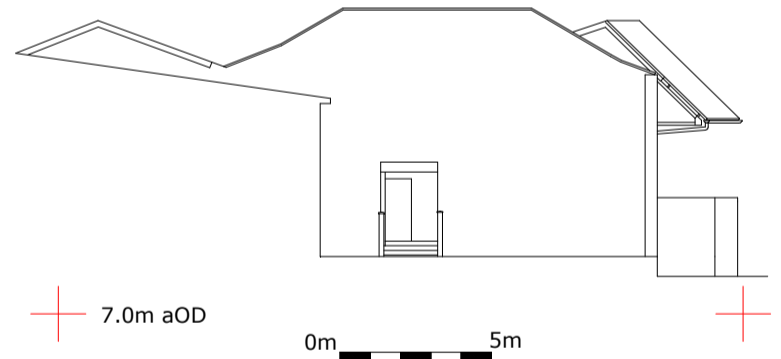
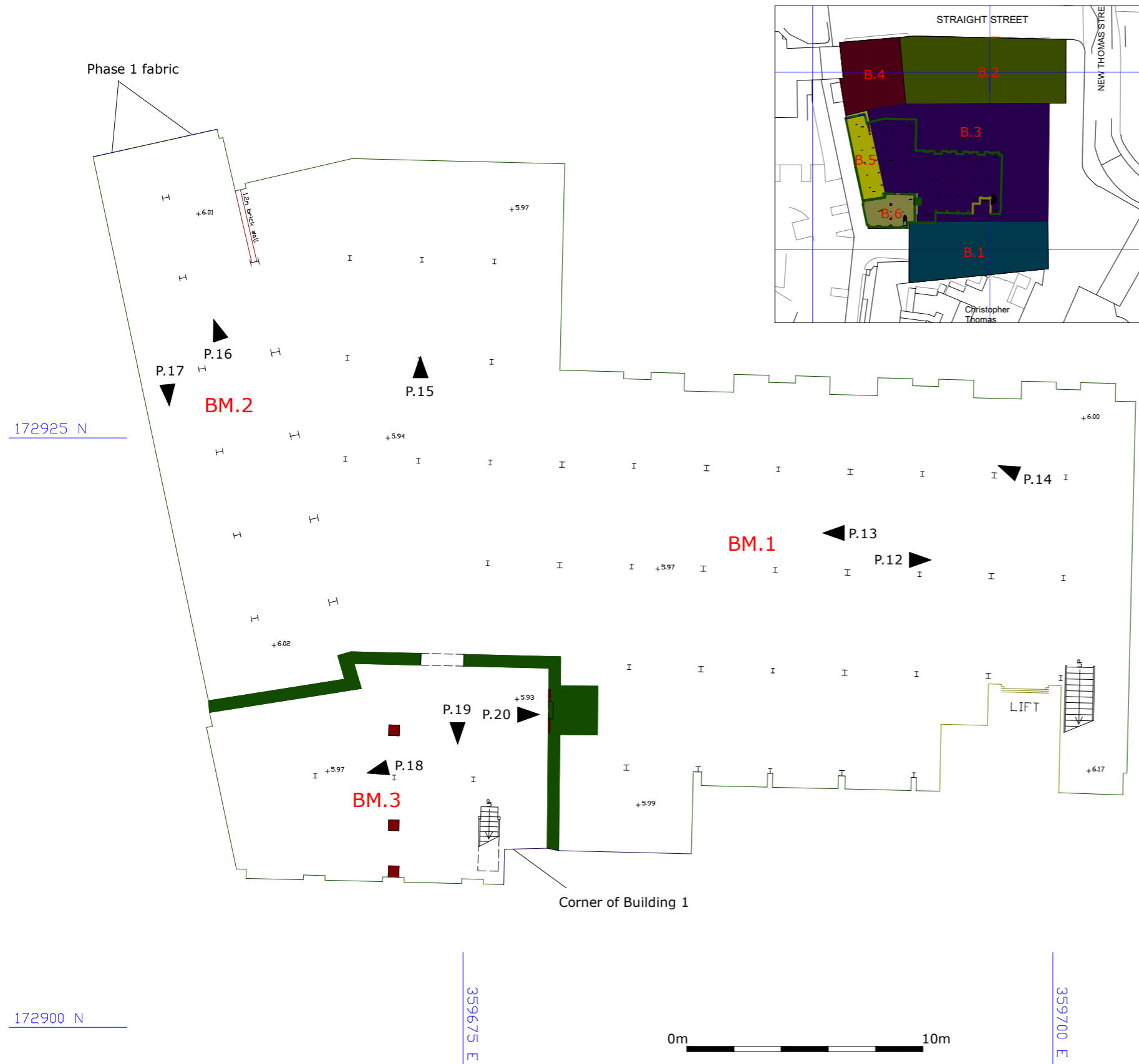


Plate 12

Phased Plan of Basement (including Plates 12 - 20)

Figure 11



Building 3



Plate 12



Plate 13



Plate 14



Plate 15

Building 5



Plate 16



Plate 17

Building 6



Plate 18



Plate 19

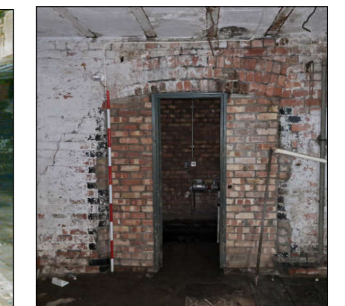


Plate 20

Key for Phasing



Figure 12A

Phased Plan of Lower Ground Floor



Plates of the Lower Ground Floor

Figure 12B

Building 1



Plate 21

Plate 22

Plate 23

Plate 24

Plate 25

Plate 26

Plate 27

Plate 28

Building 2



Plate 29

Plate 30

Plate 31

Plate 32

Plate 33

Plate 34

Building 3



Plate 35

Plate 36

Plate 37

Plate 38

Plate 39

Plate 40

Building 4



Plate 41

Plate 42

Building 5



Plate 43

Plate 44

Plate 45