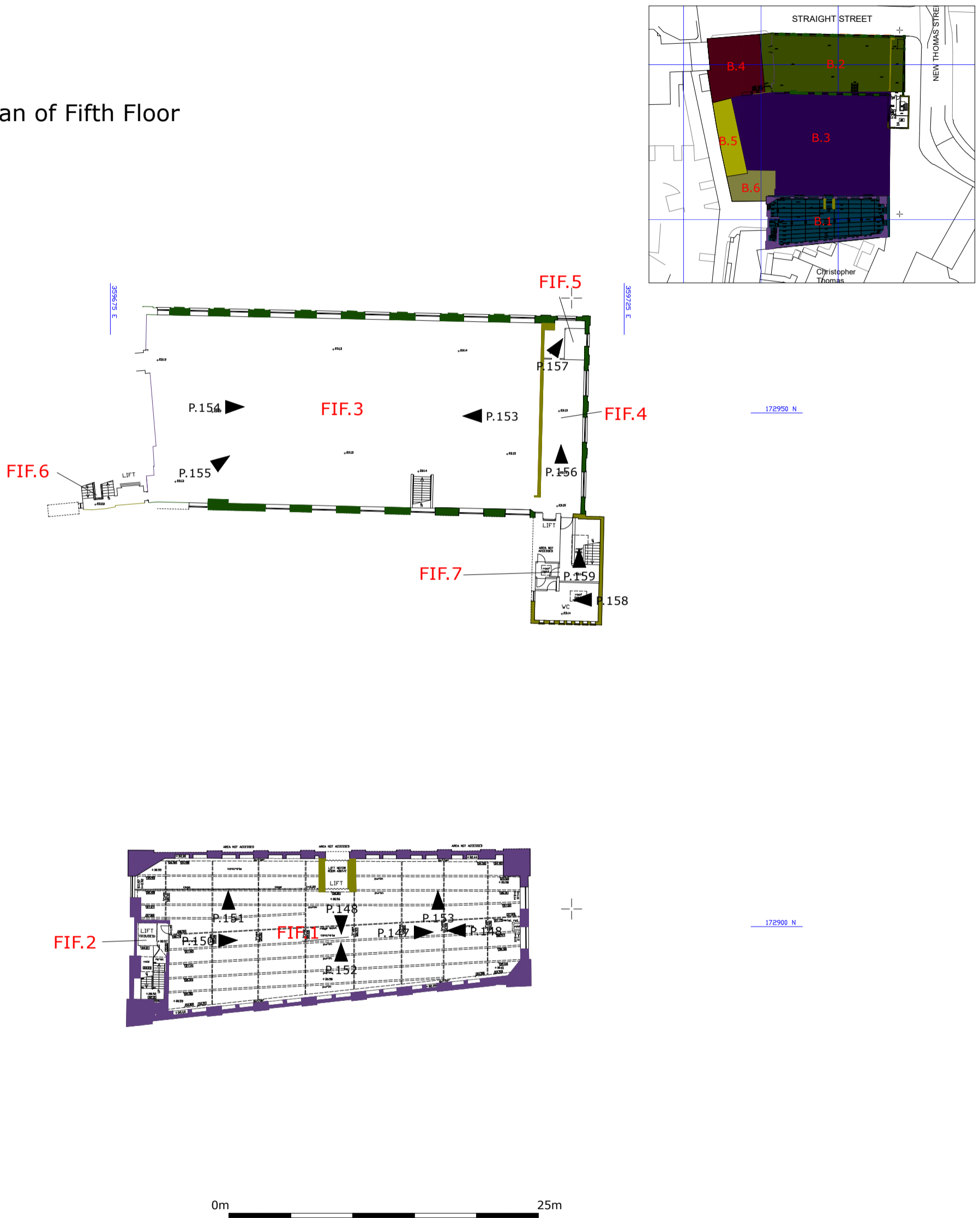


Figure 19A

Phased Plan of Fifth Floor



Plates of the Fifth Floor

Figure 19B

Building 1



Plate 147



Plate 148



Plate 149

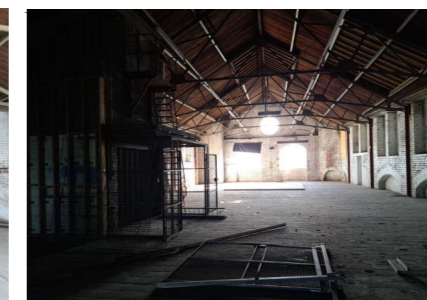


Plate 150



Plate 151

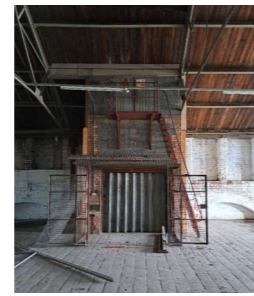


Plate 151



Plate 152

Building 2

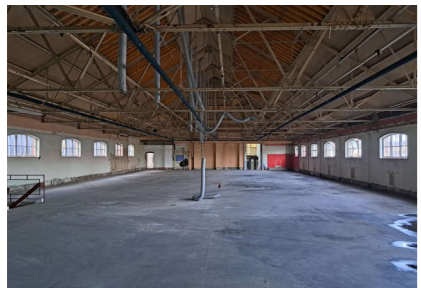


Plate 153

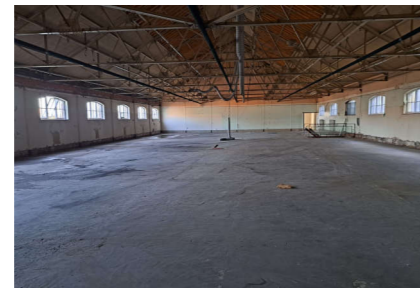


Plate 154



Plate 155



Plate 156

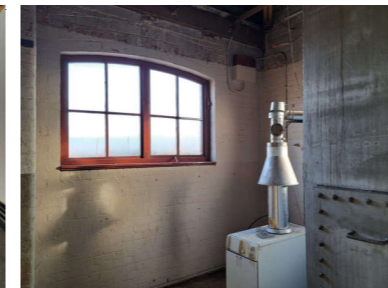


Plate 157

Other Areas - Room FIF. 7



Plate 158

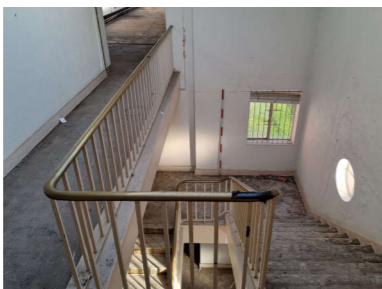
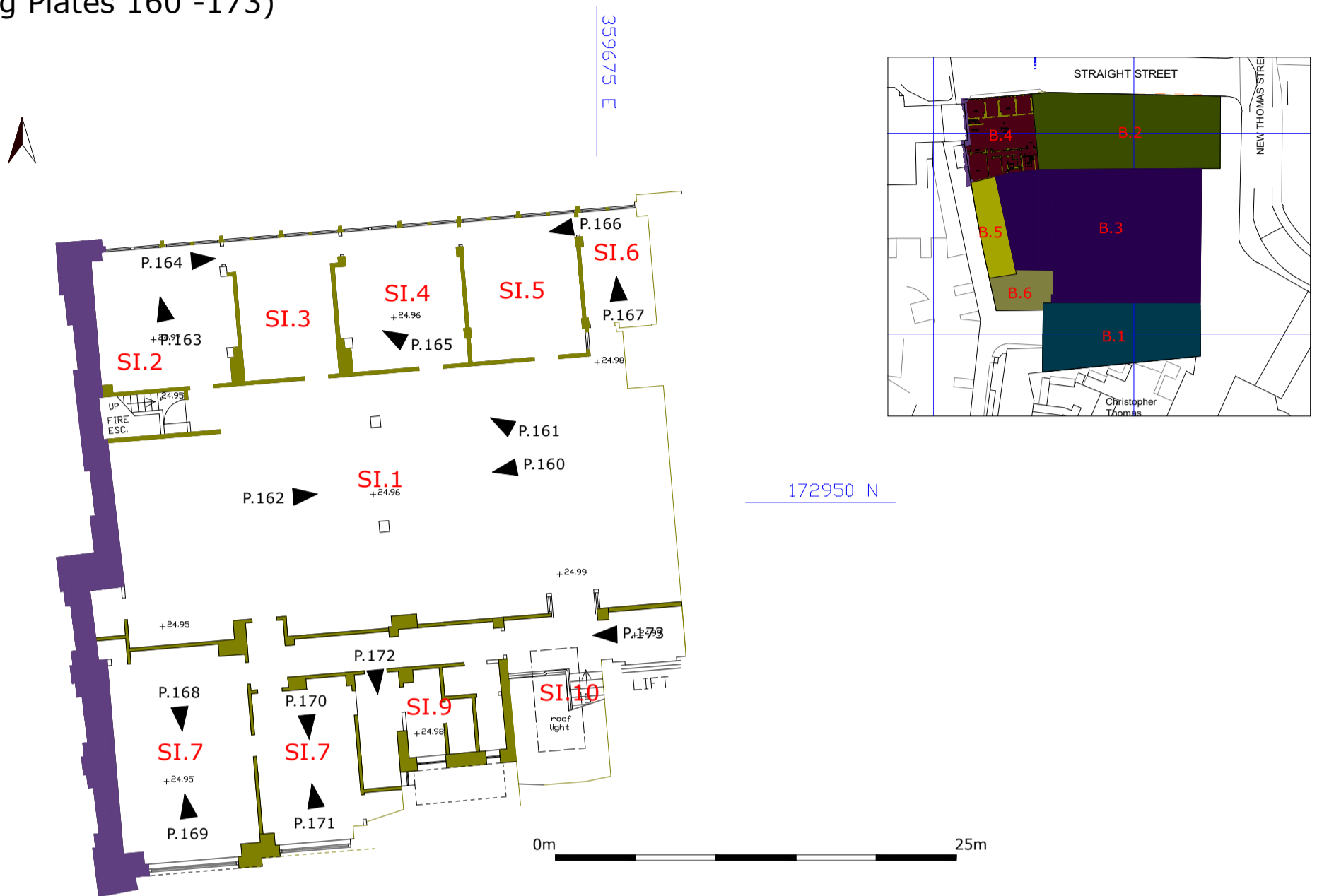


Plate 159

Phased Plan of Sixth Floor
 (including Plates 160 -173)

Figure 20



Building 4



Additional Plates



Plate 174: Detail view of doorway in western elevation of Building 1. Shows date of '1881' with initials C and J on opposing lower corners. No scale.

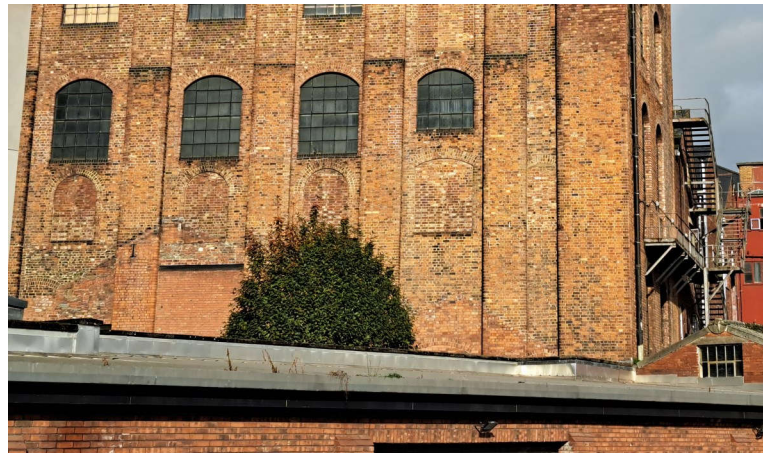


Plate 175: Detail view of eastern end of southern elevation of Building 1. Shows roof scars, blocked windows and variation in brickwork. No scale.



Plate 176: Areas of pennant stone in the southern elevation of Building 1. No scale



Plate 177: Detail of double arch feature on northern elevation of room LG 1. 1 X 2m scale, 1 x 1m scale.

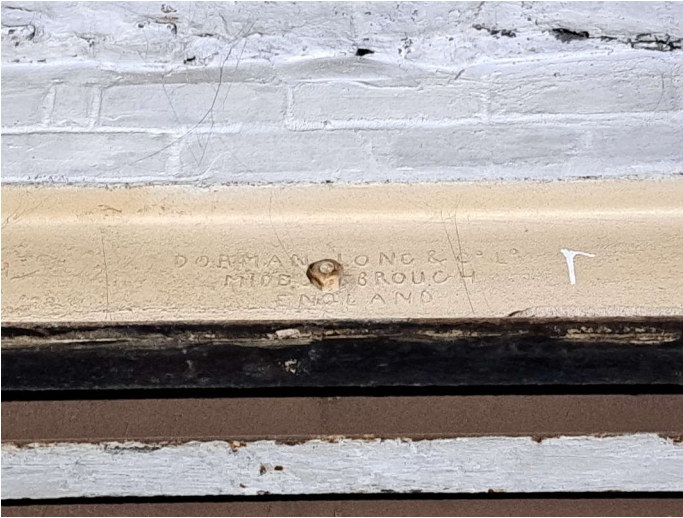


Plate 178: Steel I-Beam, between rooms LG 3 and LG 13, engraved 'DORMAN LONG & Co Ltd. MIDDLESBOROUGH. ENGLAND'. No scale.

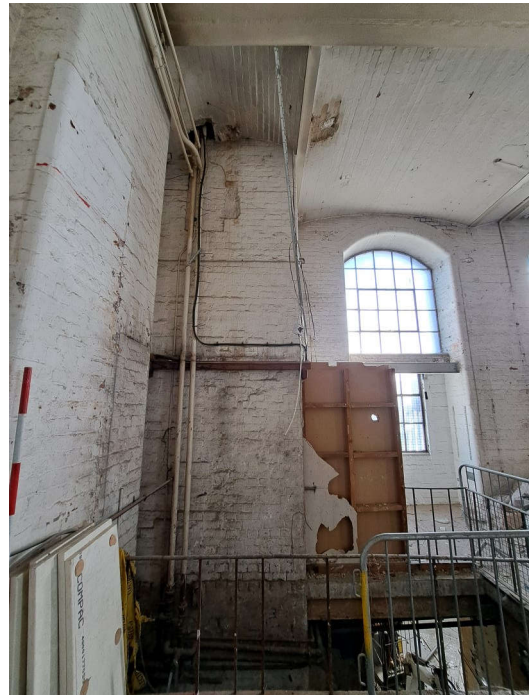


Plate 179: Looking north at chimney stack in north east corner of room FIR 1. Shows blocked opening approximately 3.8m above current floor level. No scale



Plate 180: Detail of metal hook feature of central support columns in the western end of room T.1 (Building 1). No scale

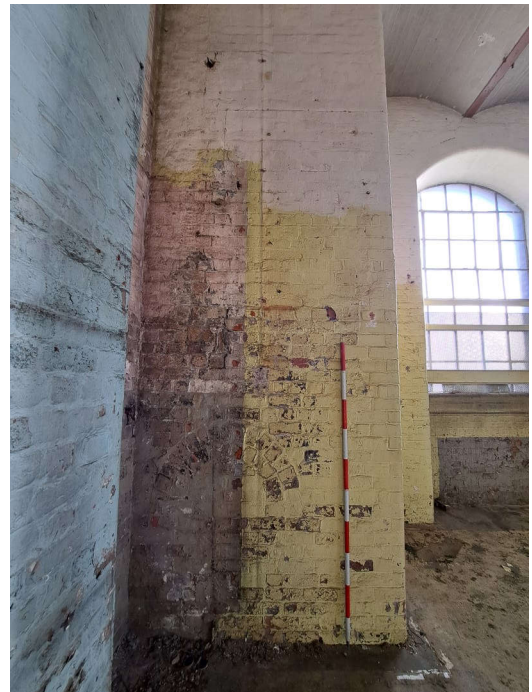


Plate 181: Detail of blocked opening in north-east chimney in room T.1. 1 x 2m scale



Plate 182: Detail of the chimney in the south-east corner of room FIF. 1 (Building 1). 1 x 2m scale, 1 x 1m scale

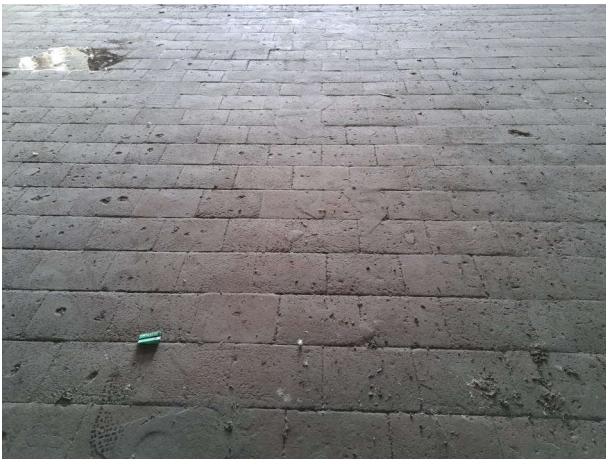


Plate 184: Detail of the floor in room FIF. 1. No scale.

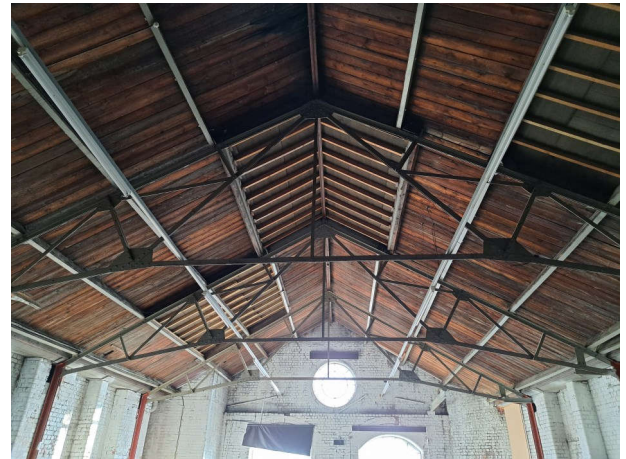


Plate 183: Detail of the roof structure of Building 1 (room FIF. 1). Note the blocked holes showing the former location of roof lights. No scale

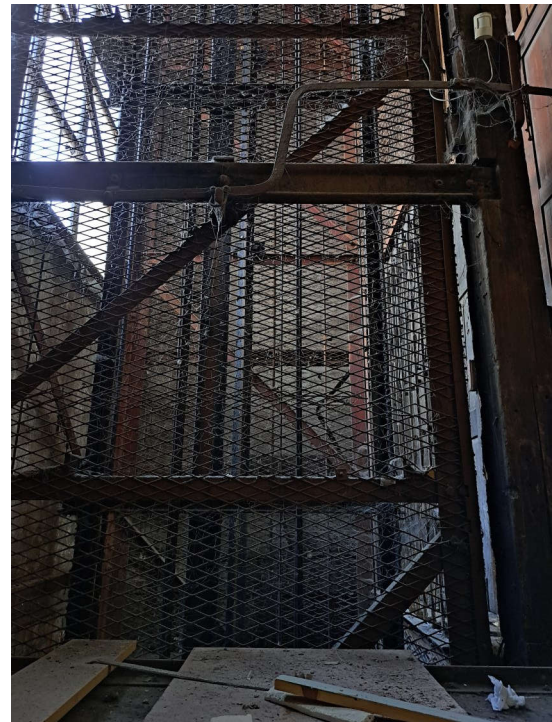


Plate 185: View of lift from the stairway. Taken from the first floor (FIR.2). No scale



Plate 186: Blocked window in western elevation taken from lobby between lower ground floor (LG 2) and first floor (FIR.2) of Building 1. Shows several phases of blocking. 1 x 2m scale.



Plate 187: Early 20th century window in eastern elevation of the lower ground floor stairwell (LG.2). The wall to the left is a later addition and the window once provided light to room LG.1 No scale.



Plate 188: Detail of internal steel frame of Building 1 taken from lobby between lower ground floor (LG 2) and first floor (FIR.2) of Building 1. No scale

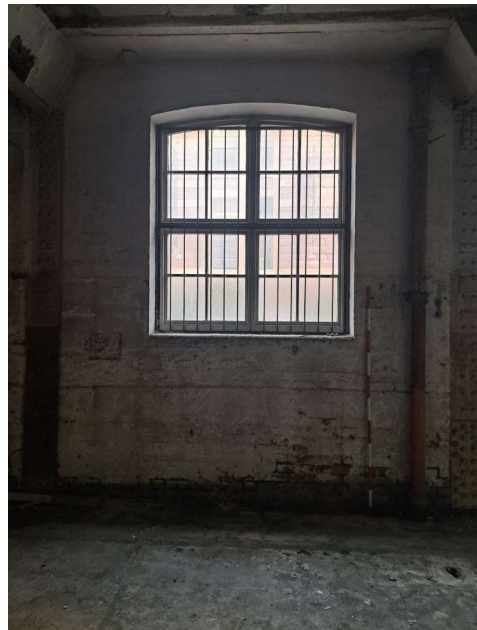


Plate 189: Window in the northern elevation of room FST.4 (Building 2) 1 x 2m scale



Plate 190: Detail of opening in elevation between Buildings 2 and 4 on the first floor. At the left the 1880s build of Building 4 can be seen, with early 20th century addition in the middle and post-1958 addition on the right. 1 x 2m scale



Plate 191: Detail of 1880s (Phase 2) brickwork of Building 4 with Phase 3 steel lintel below. Taken looking west in opening between Buildings 2 and 4 on the first floor. No scale



Plate 191: Detail of stanchion plate forming the wall between Buildings 2 and 3. Inscribed 'Frodingham Iron &... England'. No scale

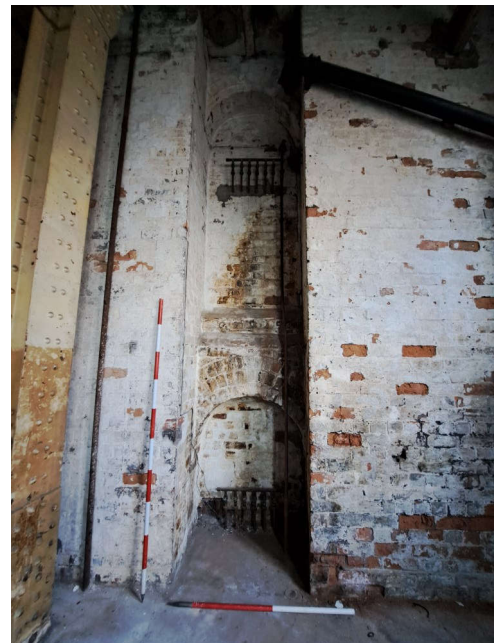


Plate 193: Detail of the northernmost set of arches in the east-facing wall between Buildings 2 and 4. 1 x 2m scale, 1 x 1m scale



Plate 194: Looking north-east along wall between basement rooms B.1 and B.2. Cut off I-beams can be seen as well as larger stanchions forming the wall. No scale



Plate 195: Niche in western end of room LG.13. Part of the northern elevation of Building 1. 1 x 2m scale



Plate 196: Detail of blocked opening in the north-west wall in Building 3. Also the southern elevation of Building 4. Shows a mix of brick and stone and may indicate remains of Phase 1 soapworks buildings incorporated into the 1880s (Phase 2) southern elevation of Building 4.

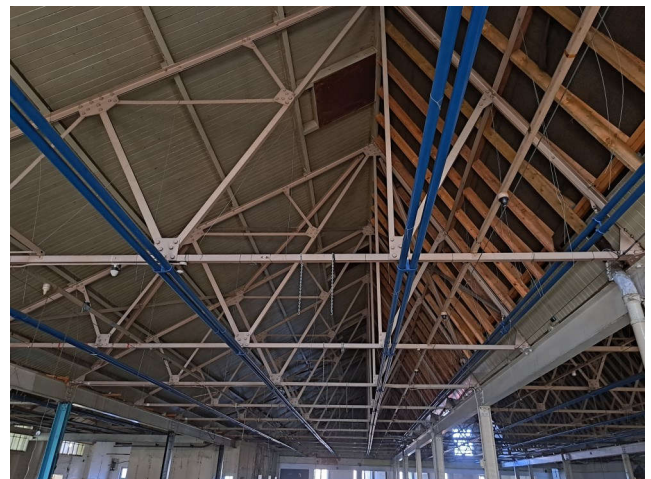


Plate 197: Detail roof structure in Building 3. Looking west. Original (Phase 3) roof boards with holes for lights can be seen in the west and exposed structure on right shows where a continuous light ran along the northern side of the saw tooth. No scale



Plate 198: Phase 3 window in central gable of the western elevation of Building 3. No scale.



Plate 199: Area of Phase 2 brickwork visible in the northern wall of Building 4. No scale

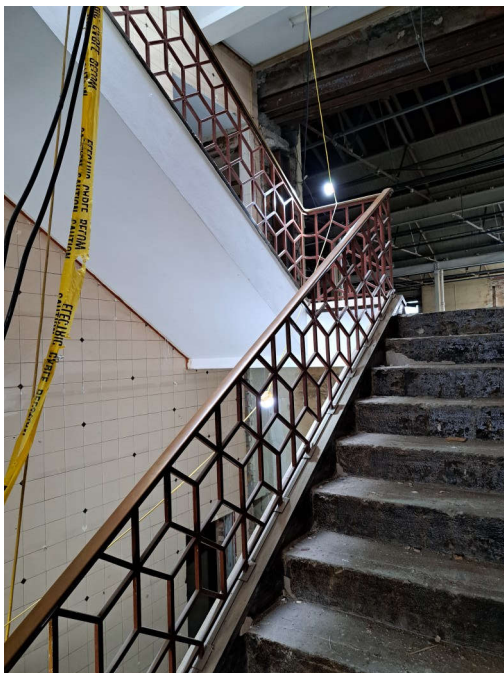


Plate 200: 1950s/1960s baluster and handrail in stairway of Building 4. No scale



Plate 201: Area of exposed Phase 2 fabric visible in inserted opening into room FST.8. No scale



Plate 202: Area of exposed Phase 2 fabric in western wall of Building 2, room S.3. No scale

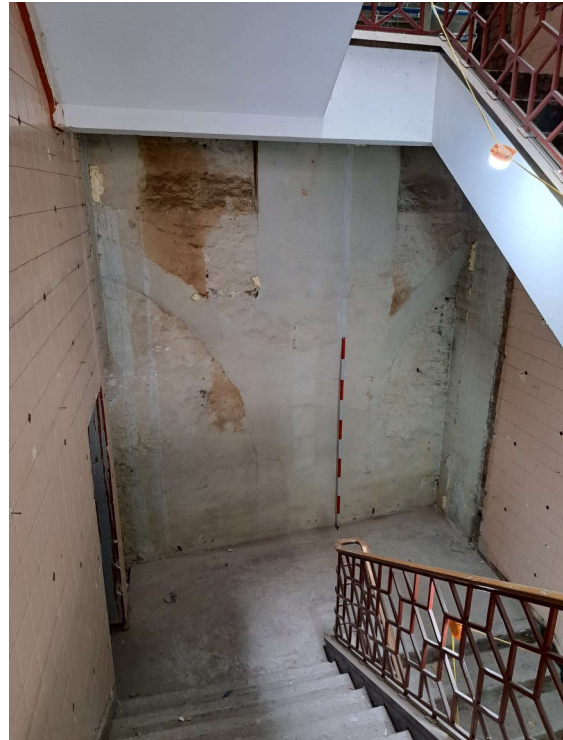


Plate 203: Brick head arches in southern stairway of Building 4. Taken between lower ground floor and first floor. 1 x 2m scale



Plate 204a: West side of northern elevation in Basement room BM.2. Shows pennant wall with ash lime mortar, probably part of the 1811 factory. No scale



Plate 204b: East side of northern elevation in Basement room BM.2. Shows pennant wall with ash lime mortar, probably part of the 1811 factory. No scale



Plate 205: Metal door in the northern end of the western elevation of Building 5. 1 x 1m scale.

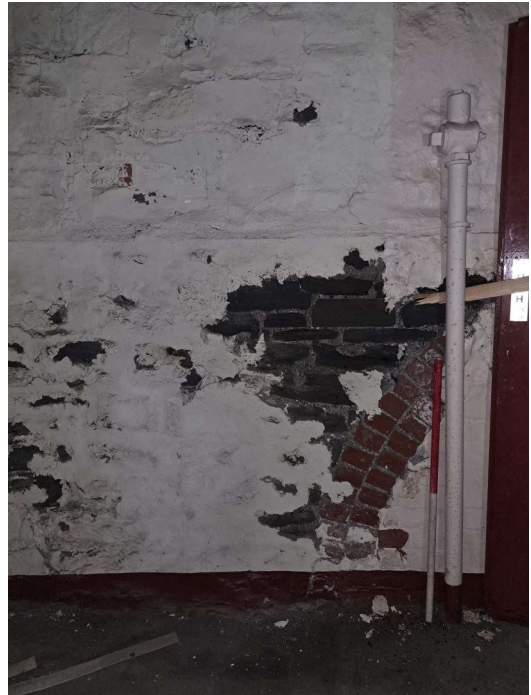


Plate 206: Pennant stone wall with ash lime mortar and remains of a brick head arch in the northern wall of Building 5 (southern wall of Building 4). 1 x 1m scale



© 2022 by Headland Archaeology (UK) Ltd

Headland Archaeology Scotland
13 Jane Street
Edinburgh EH6 5HE
t 0131 467 7705
e scotland@headlandarchaeology.com

Headland Archaeology Yorkshire & North
Units 23–25 & 15 | Acorn Business Centre | Balme
Road Cleckheaton BD19 4EZ
t 0127 493 8019
e yorkshireandnorth@headlandarchaeology.com

Headland Archaeology South & East
Building 68C | Wrest Park | Silsoe
Bedfordshire MK45 4HS
t 01525 861 578
e southandeast@headlandarchaeology.com

Headland Archaeology Midlands & West
Unit 1 | Clearview Court | Twyford Rd
Hereford HR2 6JR
t 01432 364 901
e midlandsandwest@headlandarchaeology.com

Headland Archaeology North West
Fourways House | 57 Hilton Street
Manchester M1 2EJ
t 0161 236 2757
e northwest@headlandarchaeology.com

www.headlandarchaeology.com