

Project Code: APMK10
Planning Application Ref No: TP/ED/09/0808
Date of report: March 2010
Client: Deborah Collins



AUCHENDAVY FARM MÉNAGE, EAST DUNBARTONSHIRE

Archaeological Watching Brief

Jamie Humble
MA(Hons)

PROJECT SUMMARY SHEET

<i>Client</i>	DEBORAH COLLINS
<i>National Grid Reference</i>	NS 6788 7485
<i>Address</i>	AUCHENDAVY FARM, KIRKINTILLOCH, EAST DUNBARTONSHIRE
<i>Parish</i>	KIRKINTILLOCH
<i>Council</i>	EAST DUNBARTONSHIRE
<i>Planning Application Ref No</i>	TP/ED/09/0808
<i>NMRS No</i>	N/A
<i>Oasis No</i>	HEADLAND1-73387
<i>SMR No</i>	N/A
<i>HB/SAM No</i>	N/A
<i>Listing Category</i>	N/A
<i>Project Manager</i>	MARK ROBERTS
<i>Text</i>	JAMIE HUMBLE, ARCHAEOLOGIST
<i>Illustrations</i>	JULIA BASTEK, ILLUSTRATOR
<i>Typesetting</i>	CAROLINE NORRMAN, SENIOR ILLUSTRATOR
<i>Fieldwork</i>	JAMIE HUMBLE, ARCHAEOLOGIST
<i>Specialists</i>	JULIE LOCHRIE, FINDS SPECIALIST
<i>Schedule</i>	
<i>Fieldwork</i>	18TH – 19TH FEBRUARY 2010
<i>Report</i>	FEBRUARY 2010

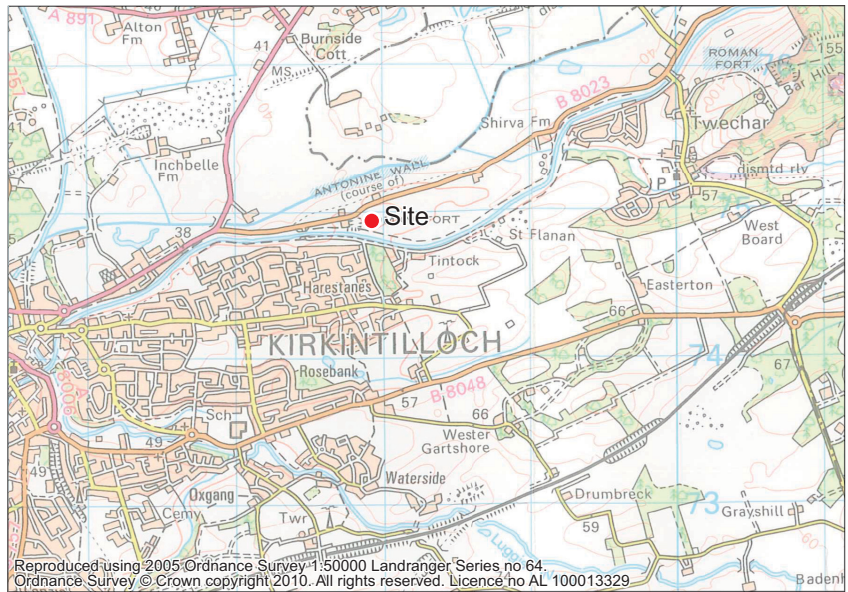
Signed off by:

Mark Roberts BA(Hons) MIA, Project Manager

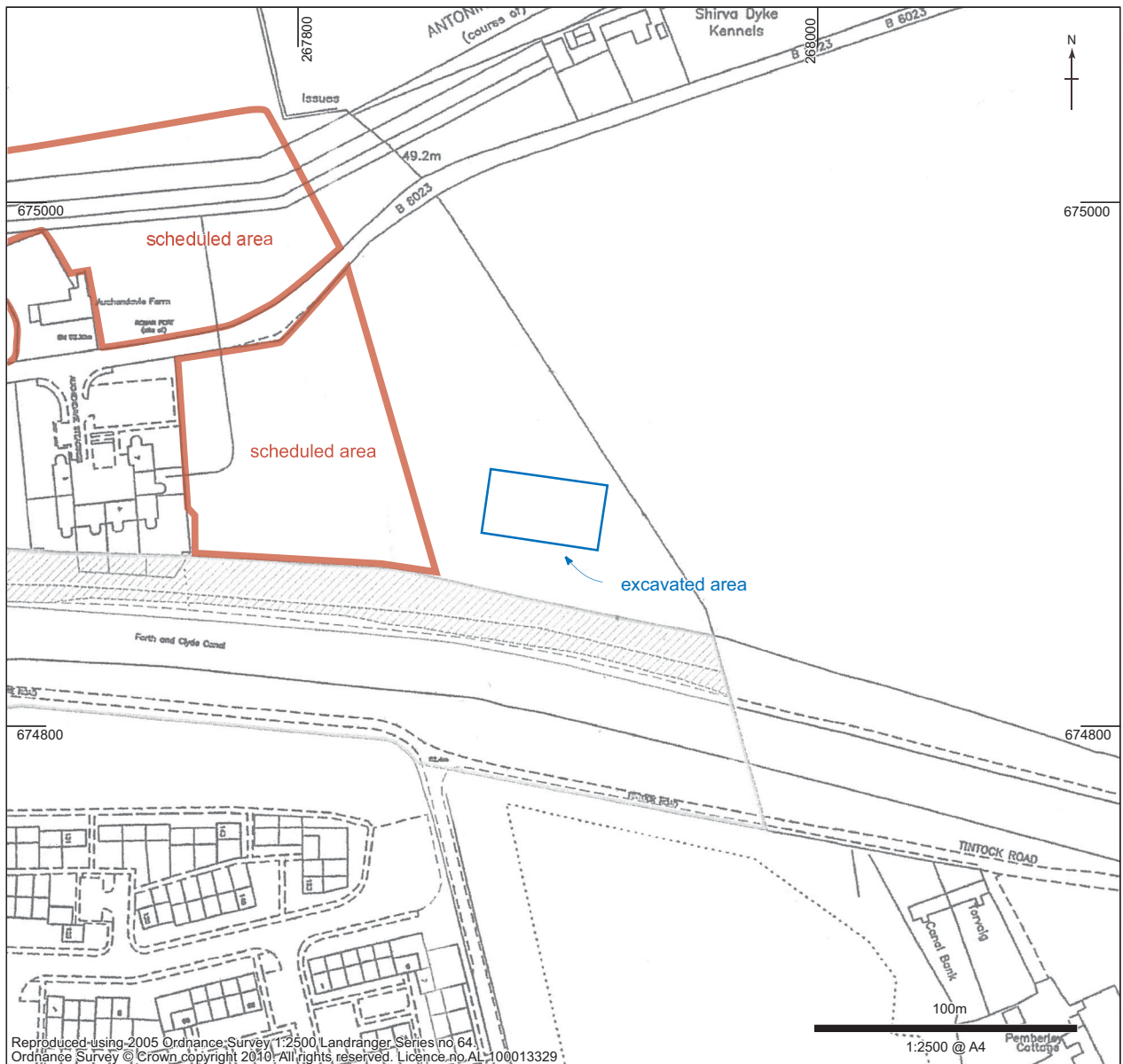
Date:.....

CONTENTS

1	INTRODUCTION	1
2	BACKGROUND	1
3	METHODOLOGY	1
4	RESULTS	1
5	FINDS ASSESSMENT	2
6	CONCLUSION	2
7	BIBLIOGRAPHY	4
8	APPENDICES	5
	Appendix 1 – Site Registers	5
	Appendix 2 – Finds Catalogue	6
	Appendix 3 – Discovery and Excavation Scotland Entry	7



Reproduced using 2005 Ordnance Survey 1:50000 Landranger Series no 64.
Ordnance Survey © Crown copyright 2010. All rights reserved. Licence no AL 100013329



Reproduced using 2005 Ordnance Survey 1:2500 Landranger Series no 64.
Ordnance Survey © Crown copyright 2010. All rights reserved. Licence no AL 100013329

Illus 1
Location of site

AUCHENDAVY FARM MÉNAGE, EAST DUNBARTONSHIRE

Archaeological Watching Brief

by Jamie Humble

An archaeological watching brief was carried out on the site of proposed ménage at Auchendavy Farm, Kirkintilloch. To the west of the area designated for the ménage lies a Roman fort associated with the Antonine Wall. An area measuring 45m by 25m was stripped of topsoil.

No features associated with the fort were encountered but the remains of the pre-improvement farming system were discovered in the form of a series of furrows with associated boundary and drainage ditches.

1 INTRODUCTION

This report presents the results of a programme of archaeological recording, by watching brief, carried out as a condition on a planning application (TP/ED/09/0808) for the development of a new ménage at Auchendavy Farm, Kirkintilloch, East Dunbartonshire (Illus 1). The watching brief sought to identify and record any archaeological remains on the site. This was carried out in accordance with a Written Scheme of Investigation (Headland, 2010) previously agreed with ArchService, archaeological advisors to East Dunbartonshire Council.

2 BACKGROUND

Auchendavy is the site of a Roman Fort, designated as a Scheduled Ancient Monument, associated with the Antonine Wall, constructed as part of a frontier system to replace Hadrian's Wall. The Fort covers an area of approx. 2.8 acres, which is currently utilised for agricultural purposes. Several modern buildings have been constructed within the fort area. The area proposed for the Ménage was located to the east of the scheduled Roman Fort and south of the Frontier Wall, and measured 45m by 25m and lay out with the scheduled area (Illus 1). Previous geophysical work undertaken by Historic Scotland identified these earthworks as a likely primary Frontier Fort for the Antonine Wall and also confirmed the presence of a bath-house and additional defence features at the west (Jones, 2008). Although there were no obvious features shown by the geophysical survey, the likelihood that the area neighbouring the fort to the east contained Roman archaeological remains is considered to be high.

3 METHODOLOGY

The location and extent of stripping were determined by the requirements of the construction project. The procedure had been outlined as removing the first 200mm of topsoil of the full extent 45m by 25m. This material was then be used to level the site and the remainder would be evenly distributed across the site and sown with grass seed. In actuality all of the topsoil was stripped across the full extent of the ménage revealing the glacial till below, with the site to be levelled by excavating into the exposed glacial till.

All ground breaking work undertaken as part of the building works was carried by 360o excavator with toothless bucket under direct archaeological supervision.

All recording was undertaken by Headland Archaeology Ltd standard methods and complied with ArchService Standards for development works. All contexts, were given unique numbers. Bulk finds were collected by context. Colour transparencies and black and white negative photographs were taken.

4 RESULTS

The following presents a summary of the results detailed records can be found in the appendices.

The entire 45m by 25m area of the ménage was stripped of between 0.25m and 0.3m of dark brown clayey sand topsoil to an orange brown clayey sand glacial till deposit.

Running across the site from NE-SW were three broad, shallow furrows [001, 003 and 011], all of which extended out of the excavation area (Illus 3). These furrows were filled with material very similar to the topsoil suggesting a recent date for their infilling, modern pottery was recovered from



Illus 2
General view of site prior to excavation

the fill of 011. The furrows were accompanied by a series of related drainage or boundary ditches [005, 007, and 009] that respected the line of the furrows. Modern pottery was found in the fill of 005. These open ditches may be an attempt to drain what would have been a boggy area of the field after the furrows had fallen out of use.

After the furrows had fallen out of use a series of field drains were installed across the field. These ran NE-SW across the site on the same orientation as the furrows and seemed to have been placed with knowledge of the orientation of the furrows.

5 FINDS ASSESSMENT

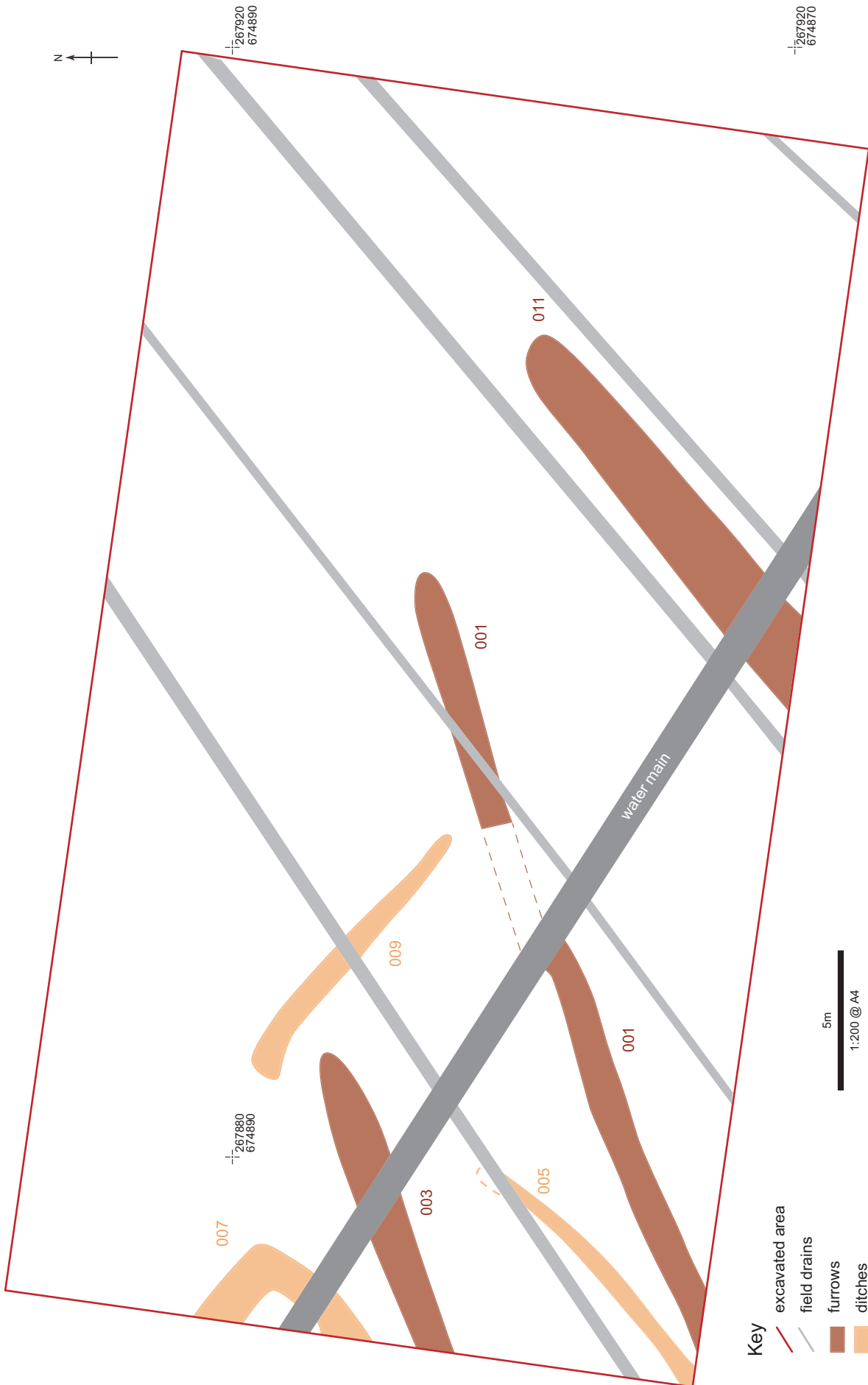
Julie Lochrie

Two modern sherds of Pottery were retrieved from Auchendavy Farm during a watching brief. One is an unglazed sherd of stoneware and the other is the rim of a whiteware plate. The whiteware was discovered in a ditch C006 associated with some furrows and the stoneware was discovered in the fill of one of the furrows C012. Both contexts were filled with material similar to the topsoil and are assumed modern.

6 CONCLUSION

The form of the furrow discovered at Auchendavy appears to fall into what Halliday (2001) describes as straight rig and grooving. This style of rig comes at the end of the sequence of rig and furrow agriculture in Scotland and is almost certainly an attempt to improve this form of cultivation. However the practice of rig and furrow cultivation does not easily allow classification of the remains in order to assign a date to these features and there does not seem to be a single sequence for the whole of Scotland.

The archaeological features revealed by the watching brief at Auchendavy farm relate to the pre improvement agricultural use of the land. The watching brief confirms that there are no remains associated with the Roman fort as was anticipated by the geophysical survey of the area.



Illus 3
Location of features

7 BIBLIOGRAPHY

Headland Archaeology Ltd 2010 *Auchendavy Farm, Kirkintilloch: Written Scheme of Investigation for Archaeological Watching Brief.*

Jones, Leslie, Nelson & Malcolm 2008 *Auchendavy Roman Fort and environs: Geophysical survey.*

Halliday 2001 'Rig and Furrow in Scotland'. In Barber *et al*, *Guidelines for the preservation of areas of rig and furrow in Scotland.*

8 APPENDICES

Appendix 1 – Site Registers***Context Register***

Context No	Description	Depth
001	Linear cut oriented NE-SW, measures 13m long by 1.8m wide and 0.12m deep. Furrow.	0.12m
002	Dark brown clayey sand. Fill of 001.	0.12m
003	Linear cut oriented NE-SW, measures 29m long by 1.8m wide and 0.22m deep. Furrow	0.22m
004	Dark brown clayey sand. Fill of 003.	0.22m
005	Linear cut running NE-SW, measures 14m long by 0.87m wide and 0.39m deep. Open drainage ditch.	0.39m
006	Dark brown to black clayey sand. Fill of 005.	0.39m
007	L shaped cut measures 3.5m long by 0.87m wide and 0.55m deep. Open drainage ditch.	0.55m
008	Mixed dark brown and dark grey clayey sand and sandy clay. Fill of 007.	0.55m
009	Linear cut oriented NW-SE, measures 12m long by 0.66m wide and 0.23m deep. Open drainage ditch.	0.23m
010	Dark brown clayey sand. Fill of 009.	0.23m
011	Linear cut oriented NE-SW, measures 21m long by 2.10m wide and 0.12m deep. Furrow.	0.23m
012	Dark brown clayey sand. Fill of 011.	0.12m
013	Dark brown clayey sand. Topsoil	0.3m
014	Orange brown clayey sand. Glacial till.	–

Photo Register

Photo No	Direction	Description
001	NE	General pre-ex view (digital only)
002	–	ID Shot
003	SW	Furrow [001]
004	SW	[001] NE facing section
005	SW	[003] NE facing section
006	SW	[005] Drainage Ditch
007	SW	[005] NE facing section
008	NW	[007] SE facing section
009	SW	[007] NE facing section
010	NW	[009] Drainage Ditch
011	NW	[009] SE facing section
012	NE	Furrow [011]

013	NE	[011] SW facing section (digital only)
014	NE	General view
015	NE	General view of stripped trench

Drawing register

Drawing No	Scale	Description
001	1:200	Trench location and plan of features.
002	1:10	[001] NE facing section
003	1:10	[003] NE facing section
004	1:10	[005] NE facing section
005	1:10	[007] NE facing section
006	1:10	[007] SW facing section
007	1:10	[009] SE facing section
008	1:10	[011] SW facing section

Appendix 2 – Finds Catalogue

Context	Material	Qty	Object	Description	Spot Date	Period
006	Pottery	1	Modern	Transfer printed, blue, plate rim	19th/20th	Mod
012	Pottery	1	Modern	Stoneware, unglazed pale grey	–	Mod?

Appendix 3 – Discovery and Excavation Scotland Entry

LOCAL AUTHORITY:	East Dunbartonshire
PROJECT TITLE/SITE NAME:	Auchendavy Farm Proposed Ménage
PROJECT CODE:	APMK10
PARISH:	Kirkintilloch
NAME OF CONTRIBUTOR(S):	Jamie Humble
NAME OF ORGANISATION:	Headland Archaeology Ltd
TYPE(S) OF PROJECT:	Watching Brief
NMRS NO(S):	N/A
SITE/MONUMENT TYPE(S):	Furrow, Ditch
SIGNIFICANT FINDS:	None
NGR	NS 6788 7485
START DATE (this season)	18/2/2010
END DATE (this season)	19/2/1010
PREVIOUS WORK (incl. DES ref.)	None
MAIN (NARRATIVE) DESCRIPTION: (May include information from other fields)	An archaeological watching brief was carried out on the site of proposed ménage at Auchendavy Farm, Kirkintilloch. To the west of the area designated for the ménage lies a Roman fort associated with the Antonine Wall. An area measuring 45m by 25m was stripped of topsoil. No features associated with the fort were encountered but the remains of the pre-improvement farming system were discovered in the form of a series of furrows with associated boundary and drainage ditches.
PROPOSED FUTURE WORK:	None
ARCHIVE LOCATION (intended/deposited)	Archive and report to be lodged with NMRS Report to be lodged with WoSAS
SPONSOR OR FUNDING BODY:	Deborah Collins
CAPTION(S) FOR ILLUSTRS:	N/A
ADDRESS OF MAIN CONTRIBUTOR:	Headland Archaeology Ltd 10 Payne Street Glasgow G4 0LF
EMAIL ADDRESS:	jamie.humble@headlandarchaeology.com