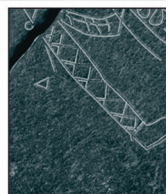
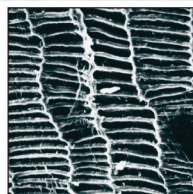
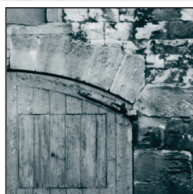
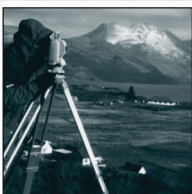
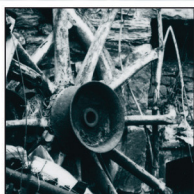
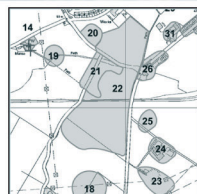


BCWK10



## BARONY CENTRE, WEST KILBRIDE

*Results of Archaeological Work*

*for West Kilbride Community Initiative*

*December 2011*



# BARONY CENTRE, WEST KILBRIDE

*Results of Archaeological Work*

*for West Kilbride Community Initiative*

*December 2011*

HA Job no.: BCWK10

NGR: NS 220642 648351

Parish: West Kilbride

Council: North Ayrshire

OASIS ref.: headland1-74680

Archive will be deposited with: RCAHMS

Project Manager

Mark Roberts

Author

Dave McNicol

Fieldwork

Fraser McFarlane & Dave McNicol

Graphics

Ania Sztromwasser

Specialists

David Henderson, Osteoarchaeology

Approved by

Mark Roberts, Project Manager



Headland Archaeology (UK) Ltd  
© Headland Archaeology (UK) Ltd 2011

10 Payne Street, Glasgow G4 0LF  
T 0141 354 8100 • F 0141 332 9388 • E [glasgowoffice@headlandarchaeology.com](mailto:glasgowoffice@headlandarchaeology.com)  
[www.headlandarchaeology.com](http://www.headlandarchaeology.com)



## CONTENTS

1.	INTRODUCTION	1
2.	BACKGROUND	1
3.	METHOD	1
	3.1 Objectives	1
	3.2 Methodology	1
	<i>Fieldwork</i>	1
	3.3 Recording	3
4.	RESULTS	3
5.	OSTEOARCHAEOLOGICAL ASSESSMENT	3
	5.1 Introduction	3
	5.2 Preservation	3
	5.3 Demography	4
6.	DISCUSSION	4
7.	REFERENCES	4
	APPENDICES	5
	Appendix 1 – Site registers	5
	<i>Context register</i>	5
	<i>Photographic register</i>	6
	<i>Drawing register</i>	6

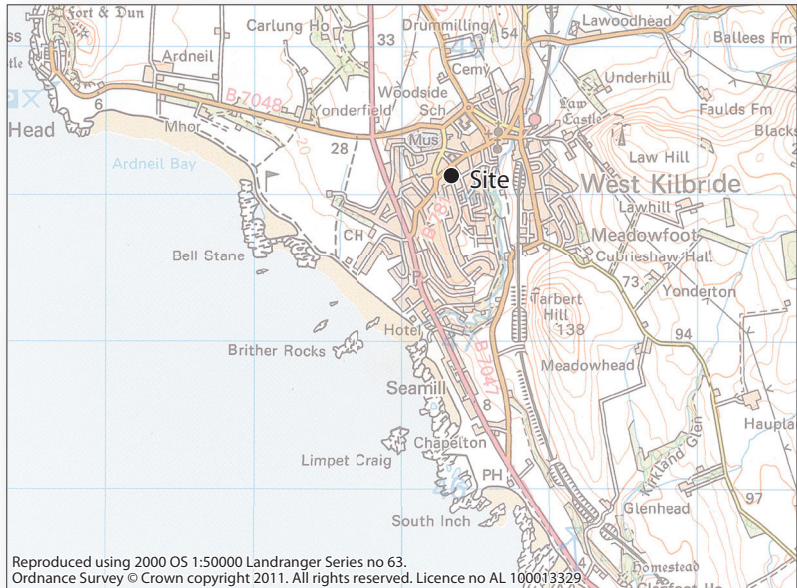


## LIST OF ILLUSTRATIONS

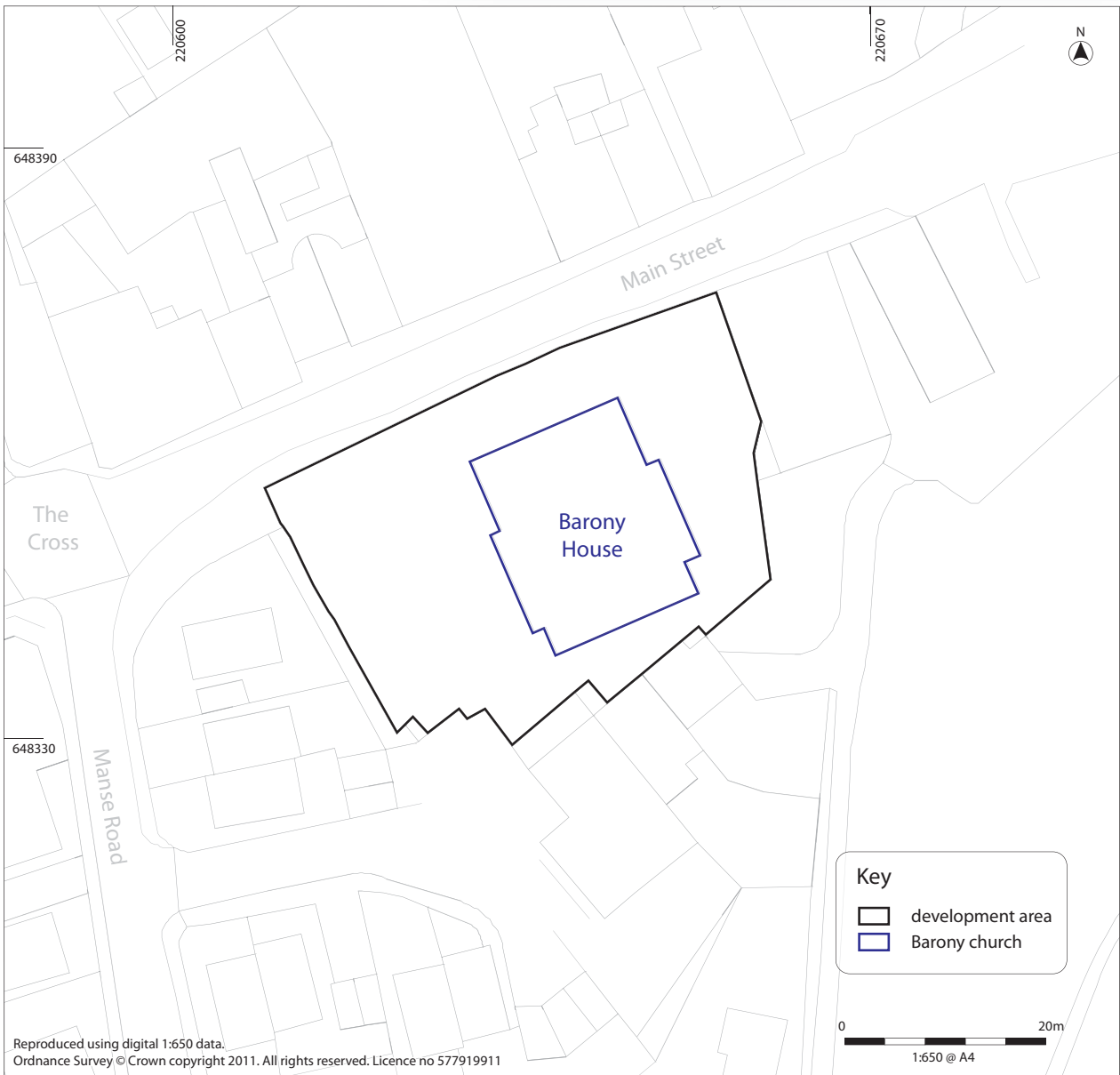
<i>Illus 1</i>		viii
<i>Site location</i>		
<i>Illus 2</i>		2
<i>Drainage trench location</i>		
<i>Illus 3</i>		3
<i>Skeleton [043]</i>		



**HEADLAND**  
ARCHAEOLOGY (UK) Ltd



Reproduced using 2000 OS 1:50000 Landranger Series no 63.  
Ordnance Survey © Crown copyright 2011. All rights reserved. Licence no AL 100013329



Illus 1  
Site location



# BARONY CENTRE, WEST KILBRIDE

## Results of Archaeological Work

*Headland Archaeology (UK) Ltd recovered human remains at the Barony Centre, West Kilbride. The works were undertaken in accordance with a Sherriff's Warrant granted to North Ayrshire Council.*

*Twelve in situ inhumations were uncovered within the disused graveyard. The inhumations uncovered were recorded and the visible remains removed, along with some charnel which accounted for a minimum of two individuals. The in situ inhumations were concentrated to the north of the graveyard, however it is likely that more inhumations survive within the rest of the graveyard but at a deeper level.*

### 1. INTRODUCTION

This report presents the results of archaeological work, carried out within a disused graveyard at the Barony Centre, West Kilbride. The works were undertaken to recover human remains before they were disturbed by groundworks associated with the redevelopment of the property.

Previous site investigations work outside the Barony Church but within the former graveyard (Headland Archaeology (UK) Ltd 2010) had failed to uncover any burials and therefore planning permission had been granted for the development. Subsequent work by Headland Archaeology (UK) Ltd (2011) within the Barony Church uncovered five *in situ* burials, along with charnel accounting for a further 24 individuals. Further groundworks were monitored in accordance with a Sheriff's Warrant granted by North Ayrshire Council since planning permission had already been granted.

### 2. BACKGROUND

The existing Barony Church building dates from 1873, and was formerly known as the Parish Church. According to the First Edition Ordnance Survey Map (1858) an earlier church was located on this plot. The date of the previous building is unknown but it appears to be considerably smaller in size, and orientated on a more E-W alignment than the modern structure. On investigating the interior of the church two date stones were discovered. One of which appeared to be contemporary with the current building – 1872. The other dated from 1732 and may be the date stone of the church seen in the 1st Edition OS. This latter can only be speculated.

The graveyard was closed in the 1860s (Ayrshire Roots 2010), and a new public cemetery plot was opened at the northeast of the village in 1858. No further interment was allowed within the old plot, but it is possible that some later burial of special families' members may have been allowed.

### 3. METHOD

#### 3.1 Objectives

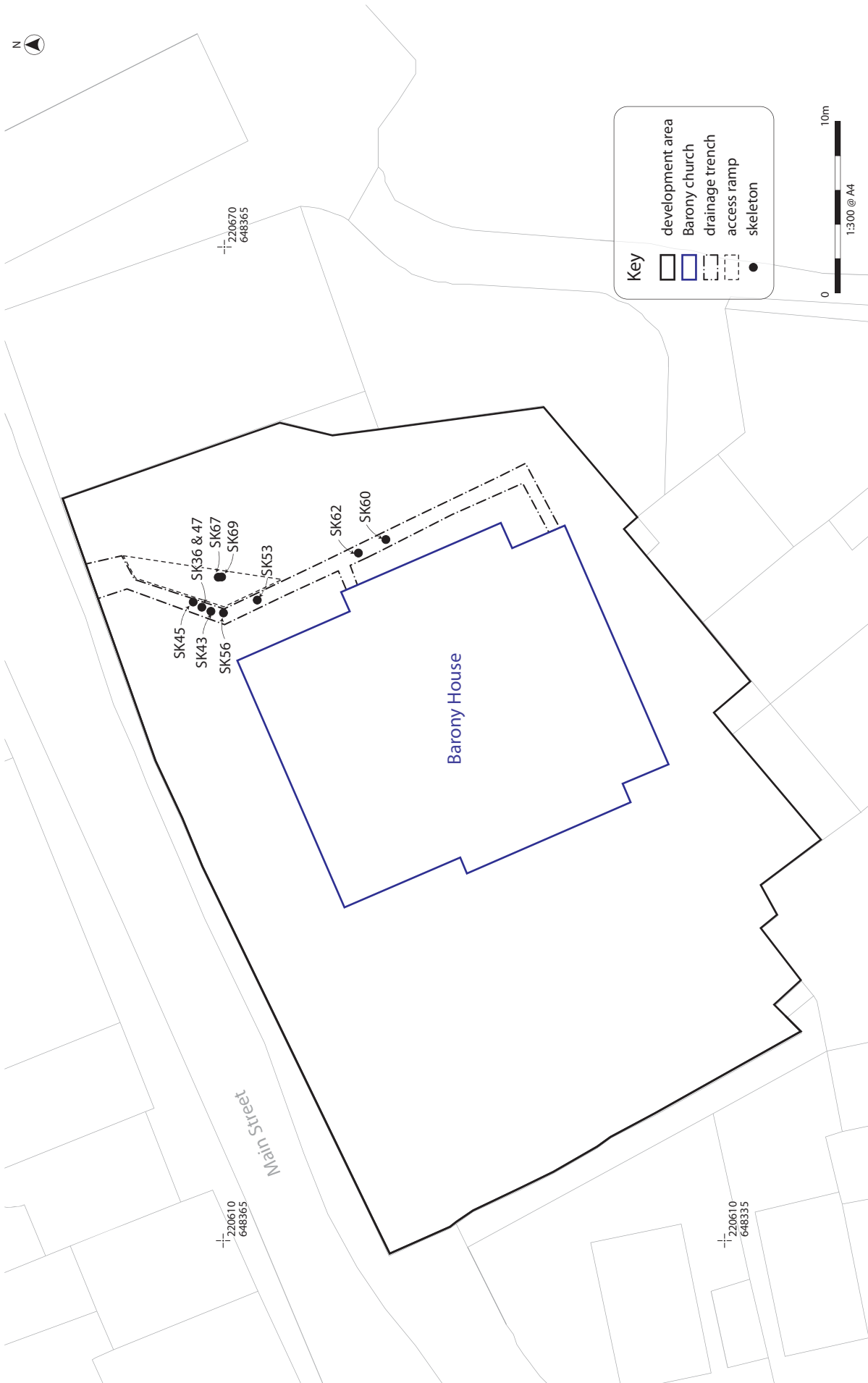
The objectives of the work were:

- to recover and record any human remains before they were disturbed by the development in accordance with a Sherriff's Warrant,
- to meet the needs for archaeological conservation and recording without unnecessary delay or disturbance to the development project.

#### 3.2 Methodology

##### *Fieldwork*

As the upper graveyard soils post-dated the former cemetery were therefore known to be devoid of human remains, these were removed by mechanical excavator under constant archaeological supervision. All further work was undertaken by hand. All human remains were removed and all articulated human remains which had been disturbed were recorded and removed.



Illus 2  
Drainage trench location

### 3.3 Recording

All recording followed Headland Archaeology (UK) Ltd standard procedures and was in accordance with the codes of practice of the Institute for Archaeologists (IfA). All trenches and contexts were given unique numbers and all recording was undertaken on pro forma record cards that conform to accepted archaeological norms. All stratigraphic relationships were recorded.

A full photographic record using colour slide and black and white film, supplemented by digital photographs was taken to record archaeological contexts and to illustrate the progress of the trial trenching. A graduated metric scale was clearly visible in record photographs of contexts. All photographs were recorded by individual print number and included information on the context and direction taken.



Illus 3  
*Skeleton [043]*

## 4. RESULTS

Ten inhumations were uncovered within the line of the drainage trench within the graveyard to the east of the Barony Church. Eight ([036], [043], [045], [047], [053], [056], [067] and [069]), to the north and two ([060] and [062]), to the south of the graveyard. A further two inhumations ([067] and [069]) were uncovered within the line of the wheelchair access ramp to the north of the graveyard. A grave cut [050] was also uncovered to the north of the graveyard, however the depth of the drainage trench meant that the bottom of this grave was not encountered and therefore no human remains were uncovered. A small amount of charnel, accounting for at least two individuals, was also collected from the entire length of the excavated drainage trench and access ramp.

Of the ten inhumations uncovered within the drainage trench, six ([036], [043] (Illus 3), [045], [047], [053], and [060]) were located within visible grave cuts, and three ([043], [060], and [062]) had evidence of being buried within a coffin. Four of the burials had been previously disturbed either by later graves ([036] by grave [039] and [069] by [067]) or modern services ([045] and [060]).

The two inhumations uncovered within the access ramp were not located within visible grave cuts, however burial [069] appeared to have been partially truncated by burial [067], which in turn also appeared to have been truncated at some point.

All of the inhumations were aligned roughly east-west, and located at a depth of between 0.7 and 0.9m below ground level. The natural geology, a compact pinkish sand [040] was encountered at the northern end of the drainage trench. However, no evidence of this natural geology was encountered to the south, and it is likely that more inhumations are located here but at a much deeper level.

## 5. OSTEOARCHAEOLOGICAL ASSESSMENT

*David Henderson*

### 5.1 Introduction

This assessment of the human remains recovered from the site at Barony Centre, West Kilbride, deals with an assemblage recovered archaeologically during excavations.

The material presented for assessment was unwashed, and mostly covered in a thick, sticky clay; this has meant that this material has been quickly assessed only to establish the barest details of the size and basic character of the assemblage, no investigation of pathological changes on the bones was possible.

### 5.2 Preservation

Much of the material examined was very well preserved, the bone being hard and with little surface erosion; some elements of the assemblage were, however, broken.



### 5.3 Demography

The following conclusions, based on a quick examination of the assemblage, must be considered tentative at best.

The material presented for assessment consisted mostly of in situ inhumations, partially excavated owing to the constraints on the dimensions of the trenches. Of 14 identified inhumations, 12 were represented by the skull and/or upper body, suggesting that the burials were laid out in rows. Some material which had been recorded as charnel was still articulated (*e.g.* cranium with mandible and cervical vertebrae) possibly showing some intercutting of graves, although this can not have been common as the amount of charnel recovered was small.

Eight of the burials were of males, three were females, one was of a 12 year old juvenile and two, were not identifiable as to age or sex.

Of the adult skeletons, three were probably over 50 years at death (OA), three were 25 to 35 years (YA), four were between 35 and 50 years (MA). One skeleton was fully adult, but could not be aged more accurately.

The in situ material was as follows:

4

Skeleton	Sex	Age	Notes
SK36	?	?	Rib fragments only
SK43	M	MA	–
SK 46	?	?	Hum & vert only
SK 47	F	YA	–
? 051	M	YA	Skull, mandible and neck vertebrae. Marked as charnel.
SK 53	M	MA	–
SK 54	M	OA	Fragment of skull plus mandible
SK 56	M	?YA	Partial skull only
SK 57	M	MA	–
SK 60	F	OA	–
SK 62	??M	AD	–
SK 67	?	Juvenile	12 years
? 067	M	MA	Head and left shoulder, marked as charnel
SK 69	F	OA	–

### 6. DISCUSSION

The inhumations uncovered during the groundworks varied in age and sex typical of the normal use of a graveyard. All of the inhumations were orientated in an east-west alignment which suggested that they were laid out in organised rows. The fact that the drainage trench ran in a north-south direction and that the majority of the inhumations uncovered were represented by their skull and/or upper body supports this. The presence of a couple of intercutting graves may suggest a fairly busy graveyard or one in which some of the graves were not clearly marked. The construction of the existing Barony Church in 1873, involved the landscaping of the graveyard, so that the gravestones surviving on site today are not located above specific graves.

The truncation of some of the inhumations by modern services relating to the existing church built in 1873 show that these are related to the earlier church located on the same spot, and it is likely that no new burials were interred in the graveyard after it was closed in the 1860s.

The lack of natural geology located at the northern end of the graveyard suggests that more burials survive here at a deeper depth. Any further work at depth in this area as well as any work throughout the graveyard greater than 0.5m in depth is likely to disturb further burials.

### 7. REFERENCES

- Ayrshire Roots, 2010, <<http://www.ayrshireroots.com/Genealogy/Records/Burial/Burial%20Grounds%20in%20Ayrshire%201.htm>> accessed December 2011.
- Headland Archaeology (UK) Ltd, 2010, *Barony Centre, West Kilbride: Archaeological Watching Brief and Test Pits*, Unpublished Client Report.
- Headland Archaeology (UK) Ltd, 2011, *Barony Centre, West Kilbride: Trial Trenching*, Unpublished Client Report.
- Headland Archaeology (UK) Ltd, 2011, *Barony Centre, West Kilbride: Written Scheme of Investigation for Archaeological Watching Brief and Test Pits*, Unpublished Client Report.

## APPENDICES

### Appendix 1 – Site registers

#### Context register

Context no.	Area	Description
001	Tr. 1	Upper rubble layer
002	Tr. 1	Lower charnel layer
003	Tr. 2	Rubble layer
004	Tr. 3	Rubble layer
005	Tr. 3	Lower layer
006	Tr. 3	Graveyard soil
007	Tr. 1 & Tr. 3	Wall foundation
008	Tr. 1 & Tr. 3	Wall foundation
009	Tr. 3	Child skeleton
010	Tr. 3	Youth skeleton
011	Tr. 3	Adult skeleton
012	Tr. 3	Adult skeleton
013	Tr. 3	Adult skeleton
014	TP 4	Gravel layer
015	TP 4	Rubble layer
016	TP 4	Redeposited natural
017	TP 4	Graveyard soil
018	TP 4	Grave cut
019	TP 4	Grave fill
020	Tr. 3	Adult skeleton
021	TP 5	Layer
022	TP 5	Graveyard soil
023	TP 5	Grave cut
024	TP 5	Grave fill
025	TP 4	Grave fill
026	TP 4	Grave cut
027	TP 6	Layer
028	TP 6	Rubble layer
029	TP 6	Mixed layer
030	TP 6	Graveyard soil
031	TP 6	Possible linear feature
032	TP 6	Fill of [031]
033	TP 6	Rubble layer
034	TP 6	Graveyard soil

Context no.	Area	Description
035	Drainage	Cut of grave
036	Drainage	Skeleton found within grave [035]
037	Drainage	Single fill of grave [035]
038	Drainage	Modern disturbance
039	Drainage	Cut of grave E-W
040	Drainage	Graveyard soil
041	Drainage	Single fill of grave [039]
042	Drainage	Coffin from grave [039]
043	Drainage	Skeleton within grave [039]
044	Drainage	Cut of grave
045	Drainage	Skeleton within grave [044]
046	Drainage	Single fill of grave [045]
047	Drainage	Skeleton within grave [048]
048	Drainage	Cut of grave
049	Drainage	Fill of grave [048]
050	Drainage	Cut of grave
051	Drainage	Fill of grave [050]
052	Drainage	Cut of grave
053	Drainage	Skeleton
054	Drainage	Skull fragment
055	Drainage	Fill of [052]
056	Drainage	Skull fragment
057	Drainage	Skull
058	Drainage	Cut of grave
059	Drainage	Grave fill
060	Drainage	Skeleton
061	Drainage	Coffin
062	Drainage	Skeleton
063	Drainage	Grave fill
064	Drainage	Coffin
065	Access Ramp	Skull fragment
066	Access Ramp	Skull fragment
067	Access Ramp	Skeleton
068	Access Ramp	Grave fill
069	Access Ramp	Skeleton
070	Access Ramp	Grave fill



## Photographic register

Photo no.	Direction facing	Description
001	–	ID shot
002	–	Trench 1
003	SE	Trench 2
004	–	Working shot
005	E	Pre-ex Trench 3
006	E	Pre-ex Trench 3
007	N	Skeleton [020], Trench 3
008	N	Skeleton [020], Trench 3
009	NW	Charnel against wall [007], Trench 3
010	NW	Wall [007]
011	W	Skeleton [009], Trench 3
012	–	Skeleton [009], Trench 3
013	NW	Charnel within Trench 3
014	E	Legs of skeleton [013], Trench 3
015	W	Skeleton [010], Trench 3
016	–	Skeleton [010], Trench 3
017	W	Skeleton [011], Trench 3
018	–	Skeleton [011], Trench 3
019	W	Skeleton [012], Trench 3
020	–	Skeleton [012], Trench 3
021	W	Skeleton [011] and [012], Trench 3
022	–	Working shot
023	N	Skeleton [013], Trench 3
024	N	Skeleton [013], Trench 3
025	N	Skeleton [012] and [013], Trench 3
026	N	Skeleton [012] and [013], Trench 3
027	W	Skeletons [011], [012] and [013], Trench 3
028	W	Skeletons [011], [012] and [013], Trench 3
029	W	Grave [018], TP 4
030	W	Grave [023], TP 5
031	E	Possible linear feature [031], TP 6 pre-ex
032	W	Possible linear feature [031], TP 6 post-ex
033	W	Section of TP 6
034	–	ID shot
035	SSE	Grave [035] showing [036]
036	–	Skeleton [043] within grave [039]
037	E	Grave [044] showing skeleton [045]

Photo no.	Direction facing	Description
038	E	SW facing section of grave [044] showing skeleton [045]
039	–	Skeleton [047]
040	–	Possible skeleton [057]
041	–	ID shot
042	–	Skeleton [062]
044	–	ID shot
045	–	Skull [068]
046	–	Skull [066]
047	S	Skeletons [067] and [069]
048	–	Skull [067]

## Drawing register

Drawing no.	Plan	Section	Description
001	–	Y	Foundation wall [007]
002	–	Y	Test Pit 6 with linear [031]





**Headland Archaeology (UK) Ltd**  
© Headland Archaeology (UK) Ltd 2011

**North East**

13 Jane Street, Edinburgh EH6 5HE

T 0131 467 7705 • F 0131 467 7706 • E [office@headlandarchaeology.com](mailto:office@headlandarchaeology.com)

**North West**

10 Payne Street, Glasgow G4 0LF

T 0141 354 8100 • F 0141 332 9388 • E [glasgowoffice@headlandarchaeology.com](mailto:glasgowoffice@headlandarchaeology.com)

**Midlands & West**

Unit 1, Premier Business Park, Faraday Road, Hereford HR4 9NZ

T 0143 236 4901 • F 0143 236 4900 • E [hereford@headlandarchaeology.com](mailto:hereford@headlandarchaeology.com)

**South & East**

Technology Centre, Stanbridge Road, Leighton Buzzard, Bedfordshire LU7 4QH

T 01525 850 878 • E [leighton.buzzard@headlandarchaeology.com](mailto:leighton.buzzard@headlandarchaeology.com)

[www.headlandarchaeology.com](http://www.headlandarchaeology.com)