

BRBW12



# LAND TO THE WEST OF BIRMINGHAM ROAD, BISHOPTON, STRATFORD-UPON-AVON

*Archaeological Evaluation*

*for Gallagher Estates:  
The Environmental Dimension Partnership*

11/01490/OUT

July 2012



# LAND TO THE WEST OF BIRMINGHAM ROAD, BISHOPTON, STRATFORD-UPON-AVON

*Archaeological Evaluation*

*for Gallagher Estates: The Environmental Dimension Partnership*

*11/01490/OUT*

*July 2012*

HA Job no.: BRBW12

HAS no.: 940

NGR: SP 186 565

Parish: Bishopton

Council: Stratford-upon-Avon

OASIS ref.: headland3-107538

Archive will be deposited with Stratford-upon-Avon Museum

Project Manager

Mike Kimber

Author

Simon Mayes

Fieldwork

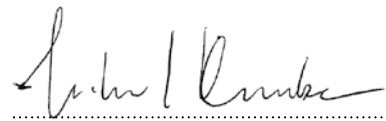
Simon Mayes & Dale Rouse

Graphics

Julia Bastek & Caroline Norrman

Approved by

Mike Kimber – Project Manager



.....

**Headland Archaeology (UK) Ltd**  
© Headland Archaeology (UK) Ltd 2012

**Midlands & West**

Headland Archaeology  
Unit 1, Premier Business Park, Faraday Road  
Hereford HR4 9NZ  
01432 364 901

[hereford@headlandarchaeology.com](mailto:hereford@headlandarchaeology.com)

[www.headlandarchaeology.com](http://www.headlandarchaeology.com)





## CONTENTS

---

1.	INTRODUCTION	1
2.	SITE DESCRIPTION	1
3.	ARCHAEOLOGICAL BACKGROUND	1
4.	OBJECTIVES	2
5.	METHOD	2
	5.1 Trial trenching	2
	5.2 Recording	2
6.	RESULTS	2
7.	DISCUSSION	3
8.	ARCHIVE	3
9.	REFERENCES	3
10.	APPENDICES	4
	Appendix 1 Trench descriptions	4
	Appendix 2 Photographic register	6



---

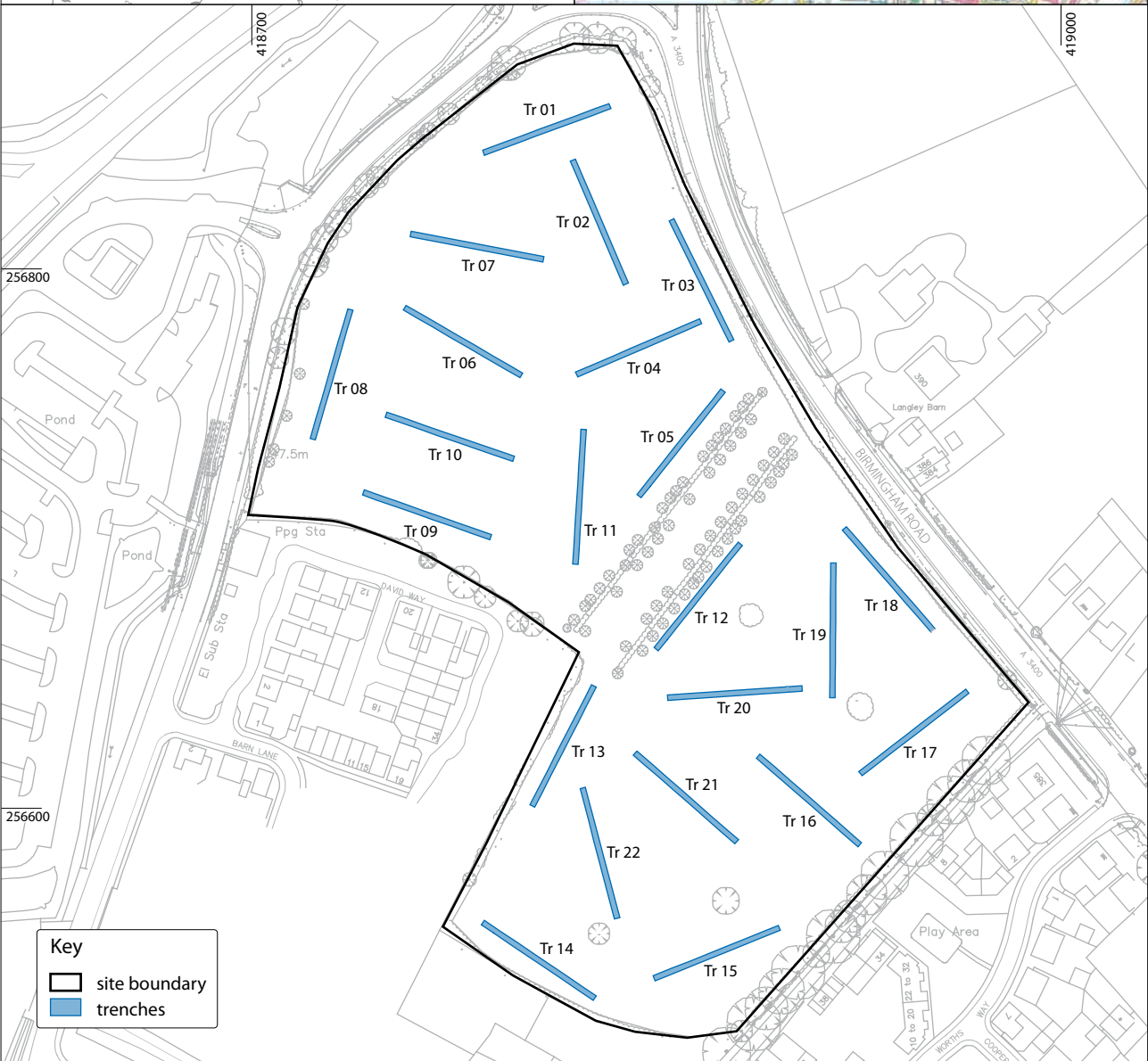
## LIST OF ILLUSTRATIONS

---

<i>Illus 1</i>		viii
	<i>Site location</i>	
<i>Illus 2</i>		2
	<i>General view showing Trench 2</i>	
<i>Illus 3</i>		2
	<i>General view of Trench 5, showing change in geological natural</i>	
<i>Illus 4</i>		2
	<i>General view of Trench 13</i>	



viii



Reproduced using 2009 OS 1:50,000 Landranger Series no. 151 and digital data. Ordnance Survey © Crown copyright 2012. All rights reserved. Licence no. AL 100013329

Scale 1:2,500 @ A4



0 125m

**Illus 1**

Site location



# LAND TO THE WEST OF BIRMINGHAM ROAD, BISHOPTON, STRATFORD-UPON-AVON

## Archaeological Evaluation

*The Environmental Dimension Partnership acting as Agent to Gallagher Estates, commissioned Headland Archaeology (UK) Ltd to conduct a programme of archaeological works, consisting of the excavation of a series of evaluation trenches at land west of Birmingham Road, Stratford-upon-Avon (National Grid Ref (NGR) SP 186 565).*

*The groundworks consisted of the excavation of twenty-two, 50m by 2m wide trial trenches, within the boundary of the proposed development site.*

*No archaeological features or previously unknown heritage assets were identified within the trenches. Therefore, it is considered unlikely that any significant archaeological assets are present within the site boundaries. Therefore there are no archaeological constraints on the future development of the site.*

1

### 1. INTRODUCTION

Headland Archaeology (UK) Ltd acting on instruction from The Environmental Dimension Partnership, conducted a trial trench evaluation in advance of a planning application by Gallagher Estates( Ref: 11/01490/OUT), for the construction of up to 160 dwellings at land west of Birmingham Road, Stratford-upon-Avon (National Grid Ref SP 186 565).

The work was commissioned as precursor to the application process and this work will subsequently form part of the planning application to be submitted to Stratford-upon-Avon District Council Planning Department.

Anna Stocks, the Planning Archaeologist for Stratford-upon-Avon District Council agreed that an assessment of the impact on the significance of any previously unknown heritage assets within the proposed development area would best be accomplished via a scheme of trial trenching, following geophysical survey. The results of these phases of work would be used to inform the determination of the planning application. This scope of work was encapsulated within a Project Design produced by Headland Archaeology (Kimber 2012) and agreed with the planning authority.

The evaluation was conducted between the 18th and 25th of June 2012

### 2. SITE DESCRIPTION

The proposed development site currently comprises open pasture that has lain fallow and returned to scrub. It is located towards the northern fringe of the Stratford-upon-Avon conurbation, south of the Bishopton roundabout, both bounded by the A 4300 Birmingham Road to the north east and Bishopton Lane to the north west, while verging upon the former hamlet of Bishopton.

The site has an area of approximately 5.5ha, lying at 48m OD in the north rising to 54m OD towards the centre of the site while gently sloping down towards its southern boundary. Close to the centre of the proposed development area is an avenue of newly planted trees aligned north east – south west, dividing the complete parcel of land into two distinct areas.

The underlying geology is recorded as being rocks of the Blue Lias and Charmouth Mudstone formations. (British Geological Survey website: <http://www.bgs.ac.uk>).

### 3. ARCHAEOLOGICAL BACKGROUND

A Desk Based Assessment (Lewis 2011) and Geophysical Survey (Bartlett Clark Consultancy 2011) relating to the proposed development have been undertaken in connection with the planning application.



Examination of the available evidence presented within these reports suggested that the site had been used for grazing or arable farming and had not been occupied.

## 4. OBJECTIVES

The objectives of the project were to ascertain whether any archaeological remains were present within the area of the proposed development, and to characterise them by date, extent, preservation, and significance.

The combined information assembled during the trial trenching was intended to make it possible to establish the potential impact of the proposed development upon any archaeological assets present within the site boundary.

## 5. METHOD

### 5.1 Trial trenching

The evaluation comprised of the excavation of twenty-two trenches, each 50m in length, through the principal areas of the proposed development site. The evaluation trenches were originally located in consideration of the results of the geophysical survey and represented an agreed 4% sample of the proposed development site.

A slight alteration to the original positions of the trench locations was necessary to avoid machine cut drainage gullies running around the border of site. Further adjustments to trench locations were made to avoid machining within close proximity to existing trees.

Excavation of the evaluation trenches was undertaken using a 14 tonne mechanical excavator equipped with a toothless bucket. All mechanical excavation was under direct supervision of an archaeologist.

The excavated trenches were closely examined for any features and the spoil was re-examined in order to collect any artefacts.

### 5.2 Recording

All recording followed IfA Standards and Guidance for Archaeological Evaluation (IfA 2009). A plan of evaluation trenches and features encountered was created using an RTK Trimble GPS and updated onto an AutoCAD base plan of the development area

Evaluation trenches were photographed with graduated metric scales and include 35mm black-and-white archival prints and digital reference photographs.

## 6. RESULTS

For the ease of reporting the excavation results, they have been displayed in a tabular form (Appendix 1). A brief, generalised description of the contexts present in the excavated trenches is given in this section.

The general stratigraphic make up the of the site consisted of the present day turf line, a grey brown topsoil deposit containing infrequent grit and pebble



inclusions overlaying a layer of buff yellow brown subsoil. The combined depth of these layers remained relatively consistent throughout the evaluation trenches at around 0.5–0.6m.

The top and subsoil overlay a layer that consisted of gravel and medium regular shaped river washed pebbles, set in a grey clay loam. This was considered a glaciofluvial geological deposit. Excavation was discontinued when this layer was encountered, with the exception of trenches 14 and 15 where sondages were excavated to a depth of 1m

Trenches 3, 4 and 11 showed a change in the geology of the site consisting of a sandy yellow deposit with occasional inclusions of red gravel, these trenches were located on the highest portion of the study area

These variations were identified as being natural geological differences, no artefacts or other anthropogenic materials were observed within the excavated trenches

## 7. DISCUSSION

Excavation of the trial trenches has indicated that the site has been subject to minimal human activity as suggested by the DBA, and historically may always have been pasture.

The area of the proposed development was formerly divided into two rectangular enclosures, divided originally by a field boundary that is now represented by a recently planted avenue of trees. These enclosures are probably post-medieval in date.

The evaluation has established that no significant or large-scale archaeological assets are present within the boundary of the proposed development area.

It is considered that the development area contains little or no potential for archaeological finds or features.

## 8. ARCHIVE

The archive is currently located at Headland Archaeology's premises (Unit 1, Premier Business Park, Faraday Road, Westfield Trading Estate, Hereford, HR4 9NZ) and will be deposited with the Stratford-upon-Avon Museum within six months of report acceptance.

## 9. REFERENCES

- IfA 2007 *Archaeological Archives Forum Archaeological Archives: a guide to best practice in creation, compilation, and transfer.*
- British Geological Survey website: <http://www.bgs.ac.uk>
- Lewis, D 2011 *Land to the West of Birmingham Road, Bishopton, Stratford-upon-Avon*, The Environmental Dimension Partnership EDP1440/01b.
- Kimber, M 2012 *Land West of Birmingham road, Bishopton; Written Scheme of Investigation*, Headland Archaeology (UK) Ltd.
- Institute for Archaeologists 2009 *Standard and Guidance for Archaeological Field Evaluation.*



## 10. APPENDICES

### Appendix 1 Trench descriptions

Trench	Dimensions (m)	Description	Contexts (depths below ground surface)	
1	50.0 x 2.0 x 0.30	(50.47-51.96m OD ground level), Excavated to a geological deposit, No archaeological features present	Ground surface:	100 -.28m
			Subsoil:	101 -.20m
			Geological deposit:	102 -u/ex
2	50.0 x 2.0 x 0.30	(52.41 – 54.85m OD ground level), Excavated to a geological deposit, No archaeological features present	Ground surface:	200 -.30m
			Subsoil:	201 -.28m
			Geological deposit:	202 -u/ex
3	50.0 x 2.0 x 0.30	(55.85 – 55.85m OD ground level), Excavated to a geological deposit, No archaeological features present	Ground surface:	300 -.35m
			Subsoil:	301 - .30m
			Geological deposit:	302 -u/ex
4	50.0 x 2.0 x 0.30	(54.24 – 56.35m OD ground level), Excavated to a geological deposit, No archaeological features present	Ground surface:	400 -.40m
			Subsoil:	401 -.15m
			Geological deposit:	402 -u/ex
5	50.0 x 2.0 x 0.30	(54.73 – 55.88m OD ground level), Excavated to a geological deposit, No archaeological features present	Ground surface:	500 -.40m
			Subsoil:	501 -.15m
			Geological deposit:	502 -u/ex
6	50.0 x 2.0 x 0.30	(49.01 – 51.44m OD ground level), Excavated to a geological deposit, No archaeological features present	Ground surface:	600 -.30m
			Subsoil:	601 -.20m
			Geological deposit:	602 -u/ex
7	50.0 x 2.0 x 0.30	(49.91 – 53.50m OD ground level), Excavated to a geological deposit, No archaeological features present	Ground surface:	700 -.30m
			Subsoil:	701 -.40m
			Geological deposit:	702 -u/ex
8	50.0 x 2.0 x 0.30	(49.89 – 53.50m OD ground level), Excavated to a geological deposit, No archaeological features present	Ground surface:	800 -.20m
			Subsoil:	801 -.30m
			Geological deposit:	802 -u/ex
9	50.0 x 2.0 x 0.30	(48.17 – 50.59m OD ground level), Excavated to a geological deposit. No archaeological features present	Ground surface:	900 -.20m
			Subsoil:	901 -.20m
			Geological deposit:	902 -u/ex
10	50.0 x 2.0 x 0.30	(48.89 – 51.98m OD ground level), Excavated to a geological deposit. No archaeological features present	Ground surface:	1000 -.30m
			Subsoil:	1001 -.30m
			Geological deposit:	1002 -u/ex
11	50.0 x 2.0 x 0.30	(53.74 – 52.94m OD ground level), Excavated to a geological deposit, No archaeological features present	Ground surface:	1100 -.30m
			Subsoil:	1101 -.25m
			Geological deposit:	1102 -u/ex
12	50.0 x 2.0 x 0.30	(54.48- 54.07m OD ground level), Excavated to a geological deposit, subsoil present to a greater depth in this trench, No archaeological features present	Ground surface:	1200 -.32m
			Subsoil:	1201 -.10m
			Geological deposit:	1202 -u/ex

Trench	Dimensions (m)	Description	Contexts (depths below ground surface)	
13	50.0 x 2.0 x 0.30	(52.87 – 50.94m OD ground level), Excavated to a geological deposit. No archaeological features present	Ground surface:	1300 -23m
			Subsoil:	1301- u/ex
			Geological deposit:	
14	50.0 x 2.0 x 0.30	(50.05 – 52.38m OD ground level), Excavated to a geological deposit, No archaeological features present	Ground surface:	1400 -22m
			Subsoil:	1401 -18+m
			Geological deposit:	1402 -u/ex
15	50.0 x 2.0 x 0.30	(52.59 – 51.89m OD ground level), Excavated to a geological deposit, No archaeological features present	Ground surface:	1500 -25m
			Subsoil:	1501 -20m
			Geological deposit:	1502 -u/ex
16	50.0 x 2.0 x 0.30	(52.83 – 52.06 OD ground level), Excavated to a geological deposit, No archaeological features present	Ground surface:	1600 -10m
			Subsoil:	1601 -25m
			Geological deposit:	1603 -u/ex
17	50.0 x 2.0 x 0.30	(52.59 – 52.323m OD ground level), Excavated to a geological deposit, No archaeological features present	Ground surface:	1700 -23m
			Subsoil:	1701 -20m
			Geological deposit:	1702 -u/ex
18	50.0 x 2.0 x 0.30	(53.48 – 52.66m OD ground level), Excavated to a geological deposit, No archaeological features present	Ground surface:	1800 -10m
			Subsoil:	1801 -15m
			Geological deposit:	1802 -u/ex
19	50.0 x 2.0 x 0.30	(53.48 – 52.55m OD ground level), Excavated to a geological deposit, No archaeological features present	Ground surface:	1900 -30m
			Subsoil:	1901 -22m
			Geological deposit:	1902 -u/ex
20	50.0 x 2.0 x 0.30	(54.04 – 52.77m OD ground level), Excavated to a geological deposit, No archaeological features present	Ground surface:	2000 -28m
			Subsoil:	2001 -25m
			Geological deposit:	1802 -u/ex
21	50.0 x 2.0 x 0.30	(53.49 – 52.55m OD ground level), Excavated to a geological deposit, No archaeological features present	Ground surface:	2100 -30m
			Subsoil:	2101 -28m
			Geological deposit:	2102 -u/ex
22	50.0 x 2.0 x 0.30	(52.52 – 53.49m OD ground level), Excavated to a geological deposit, No archaeological features present	Ground surface:	2200 -10m
			Subsoil:	2201 -10m
			Geological deposit:	2202 -u/ex



## Appendix 2 Photographic register

6

Photo	BW	Digital	Direction	Description
1	Y	Y	N	Trench 8
2	Y	Y	E	Section Detail Trench 8
3	Y	Y	E	Trench 1
4	Y	S	S	Section Detail Trench 1
5	Y	Y	S	Trench 2
6	Y	Y	E	Section Detail Trench 2
7	Y	Y	S	Trench 3
8	Y	Y	E	Section Detail Trench 3
9	Y	Y	W	Trench 4
10	Y	Y	S	Section Detail Trench 4
11	Y	Y	SW	Trench 5
12	Y	Y	SE	Section Detail Trench 5
13	Y	Y	N	Trench 6
14	Y	Y	E	Section Detail Trench 6
15	Y	Y	N	Trench 7
16	Y	Y	E	Section Detail Trench 7
17	Y	Y	W	Trench 9
18	Y	Y	N	Section Detail Trench 9
19	Y	Y	W	Trench 10
20	Y	Y	N	Section Detail Trench 10
21	Y	Y	S	Trench 11
22	Y	Y	E	Section Detail Trench 11
23	Y	Y	SW	Trench 12
24	Y	Y	SE	Section Detail Trench 12
25	Y	Y	SW	Trench 13
26	Y	Y	SE	Section Detail Trench 13
27	Y	Y	SE	Trench 14
28	Y	Y	SW	Section Detail Trench 14
29	Y	Y	E	Trench 15
30	Y	Y	S	Section Detail Trench 15
31	Y	Y	NW	Trench 16
32	Y	Y	NE	Section Detail Trench 16
33	Y	Y	NE	Trench 17
34	Y	Y	SE	Section Detail Trench 17
35	Y	Y	SW	Trench 18
36	Y	Y	NE	Section Detail Trench 18
37	Y	Y	S	Trench 19
38	Y	Y	E	Section Detail Trench 19
39	Y	Y	W	Trench 20

Photo	BW	Digital	Direction	Description
40	Y	Y	S	Section Detail Trench 20
41	Y	Y	SE	Trench 21
42	Y	Y	SW	Section Detail Trench 21
43	Y	Y	S	Trench 22
44	Y	Y	W	Section Detail Trench 22





**Headland Archaeology (UK) Ltd**  
© Headland Archaeology (UK) Ltd 2012

**Midlands & West**

Headland Archaeology  
Unit 1, Premier Business Park, Faraday Road  
Hereford HR4 9NZ  
01432 364 901  
[hereford@headlandarchaeology.com](mailto:hereford@headlandarchaeology.com)

**South & East**

Headland Archaeology  
Technology Centre, Stanbridge Road  
Leighton Buzzard LU7 4QH  
01525 850878  
[leighton.buzzard@headlandarchaeology.com](mailto:leighton.buzzard@headlandarchaeology.com)

**North East**

Headland Archaeology  
13 Jane Street  
Edinburgh EH6 5HE  
0131 467 7705  
[office@headlandarchaeology.com](mailto:office@headlandarchaeology.com)

**North West**

Headland Archaeology  
10 Payne Street  
Glasgow G4 0LF  
0141 354 8100  
[glasgowoffice@headlandarchaeology.com](mailto:glasgowoffice@headlandarchaeology.com)

[www.headlandarchaeology.com](http://www.headlandarchaeology.com)