

CFBH17



# SITE OF NEW ACCESS ROAD TO NORTH OF COURT FARM, HAMPTON BISHOP

ARCHAEOLOGICAL WATCHING BRIEF  
PLANNING REF. P152038  
EHE NO. EHE80303

commissioned by STL Energy Ltd

August 2018



# SITE OF NEW ACCESS ROAD TO NORTH OF COURT FARM, HAMPTON BISHOP

ARCHAEOLOGICAL WATCHING BRIEF  
PLANNING REF. P152038  
EHE NO. EHE80303

commissioned by STL Energy Ltd

August 2018

© 2018 by Headland Archaeology (UK) Ltd

This report contains OS data © Crown copyright and database right 2018.

This report adheres to the quality standard of ISO 9001:2015

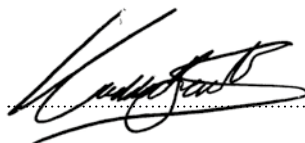
PROJECT INFO:

HA Project Code **CFBH17** / HAS No. **1307** / NGR **SO 54363 39608** / Parish **Hampton Bishop** / Local Authority **Herefordshire Council** / OASIS Ref. **headland3- 324707** / Archive Repository **Hereford Museums Service**

PROJECT TEAM:

Project Manager **Luke Craddock-Bennett** / Author **Tom Cochrane** / Fieldwork **Harriet Bryant-Buck, Sam Dixon, Tom Cochrane,** / Graphics **Beata Wieczorek-Oleksy, Eleanor Winter**

Approved by **Luke Craddock-Bennett**



Headland Archaeology Midlands & West  
Unit 1 | Clearview Court | Twyford Rd | Hereford HR2 6JR  
t 01432 364 901  
e [midlandsandwest@headlandarchaeology.com](mailto:midlandsandwest@headlandarchaeology.com)  
w [www.headlandarchaeology.com](http://www.headlandarchaeology.com)





## PROJECT SUMMARY

Headland Archaeology (UK) Ltd was commissioned by STL Energy Ltd to undertake a watching brief during the construction of an access track at Court Farm, Hampton Bishop. No archaeological deposits or features were identified, partly due to the shallow impact depth of the work.

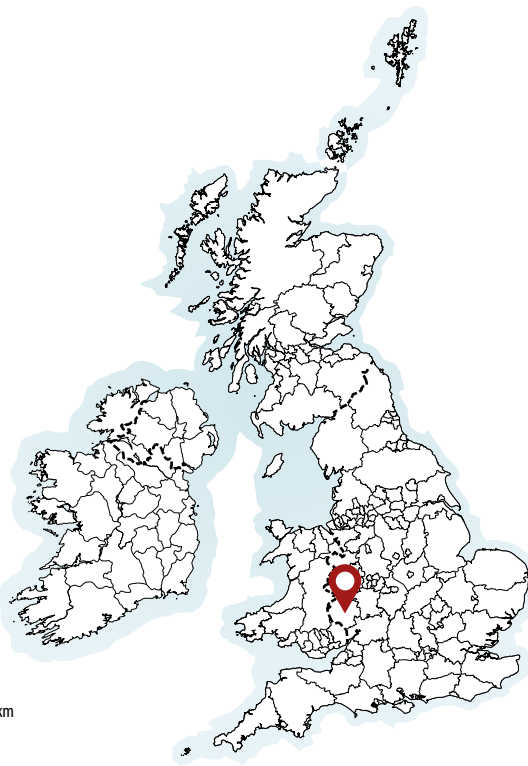
# CONTENTS

1	INTRODUCTION	1
2	PROJECT BACKGROUND	1
	2.1 SITE LOCATION	1
	2.2 ARCHAEOLOGICAL BACKGROUND	1
	2.3 AIMS AND OBJECTIVES	1
3	METHOD	2
4	RESULTS	2
5	CONCLUSION	2
6	REFERENCES	3

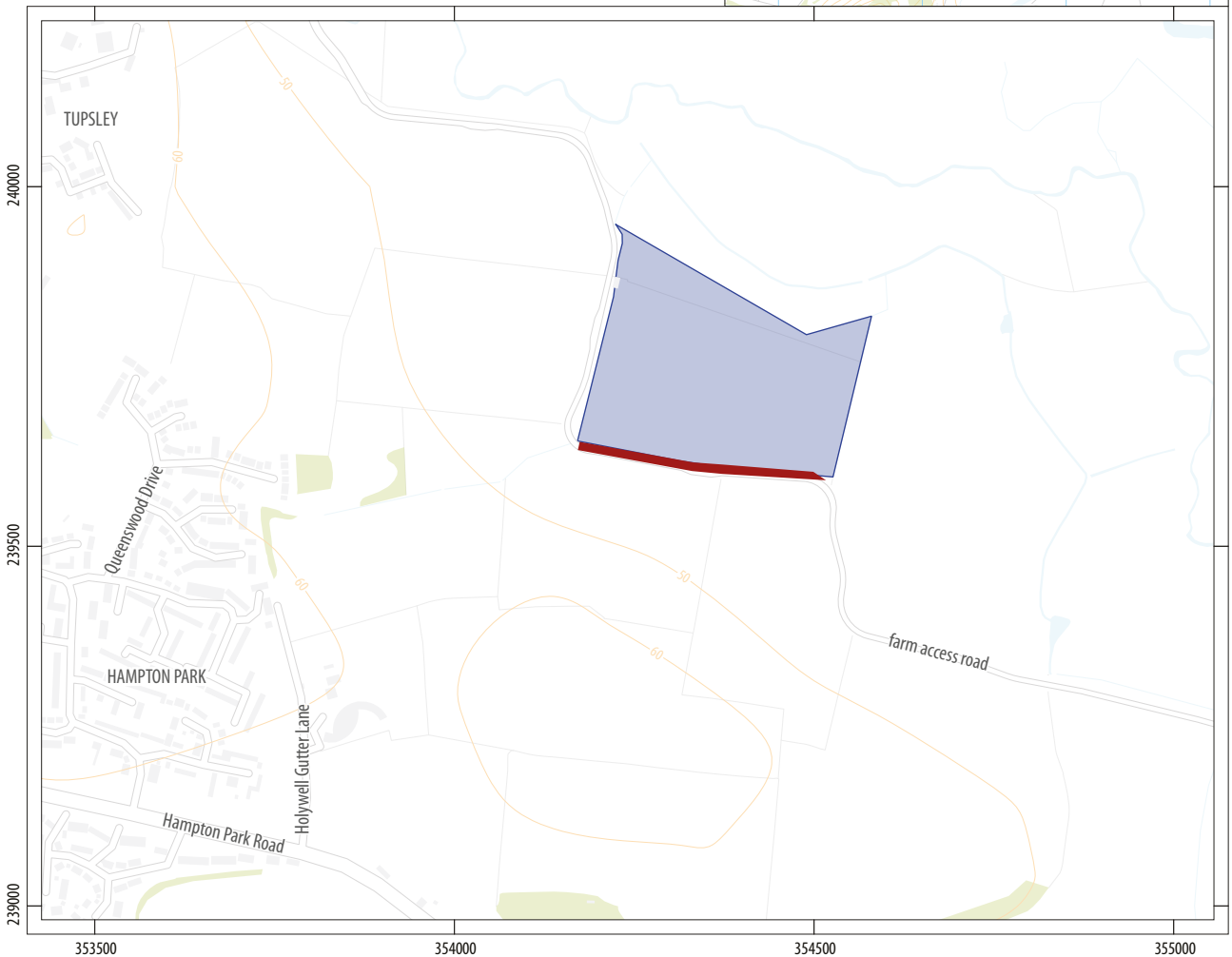
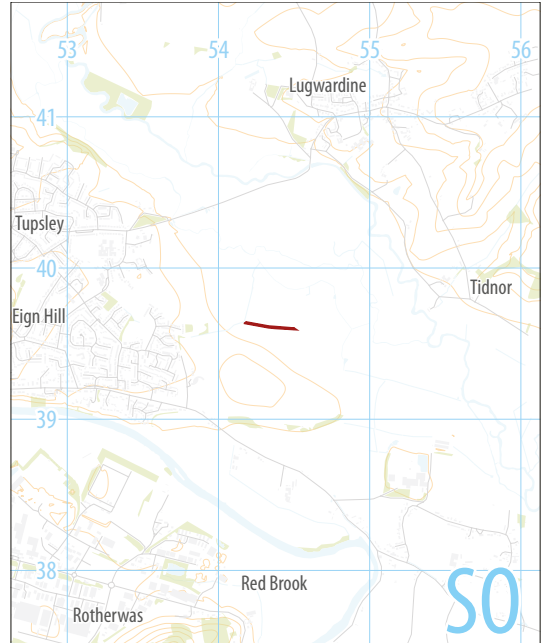
## LIST OF ILLUSTRATIONS

<b>ILLUS 1</b> SITE LOCATION	VIII
<b>ILLUS 2</b> WEST SIDE OF STRIPPED AREA, LOOKING WEST	2
<b>ILLUS 3</b> EAST SIDE OF STRIPPED AREA, LOOKING WEST	3



Land at Court Farm  
Hampton Bishop  
Hereford  
Herefordshire



0 200km  
1:12,500,000 @ A4



0 200m  
1:10,000 @ A4

-  monitored area
-  scheduled monument ID 1005348



Headland Archaeology Midlands & West  
Unit 1 | Clearview Court | Twyford Rd | Hereford HR2 6JR  
t 01432 364 901  
e midlandsandwest@headlandarchaeology.com  
w www.headlandarchaeology.com



# SITE OF NEW ACCESS ROAD TO NORTH OF COURT FARM, HAMPTON BISHOP

## ARCHAEOLOGICAL WATCHING BRIEF

### 1 INTRODUCTION

Headland Archaeology (UK) Ltd was commissioned by STL Energy Ltd to undertake a watching brief during work relating to the construction of a new access track to Court Farm, Hampton Bishop. The archaeological monitoring was required due to the proximity of the new track to a Scheduled Monument (List Entry 1005348) believed to contain remains of archaeological significance.

### 2 PROJECT BACKGROUND

In July 2015 STL Energy Ltd submitted a planning application (P152038) for the construction of a new access road to Court Farm, Hampton Bishop (SO 54363 39608). The archaeological advisor to the LPA was consulted regarding the possible implications of such a development. The initial advice given was that the project site included, and/or had the potential to further include, buried heritage assets with archaeological interest and significance. When planning permission was granted, the archaeological requirement was formalised in a planning condition (Condition 9) which specified that a programme of archaeological work should be carried out in accordance with a Written Scheme of Investigation (WSI).

A WSI outlining the methodology for archaeological monitoring of the site was prepared by Headland Archaeology Ltd (Craddock-Bennett 2017) and agreed with the archaeological advisor to Herefordshire Council, Mr Julian Cotton.

#### 2.1 SITE LOCATION

The proposed access track follows a course through agricultural land of the River Lugg floodplain to the east of Hereford. The track connects Court Farm (SO 55280, 38615) with the A438 close to Tupsley Bridge (SO 53732, 40340).

#### 2.2 ARCHAEOLOGICAL BACKGROUND

An archaeological assessment (Ratcliffe-Warren 2015) submitted with the planning application identified that the proposed track was located within a landscape of moderate to high archaeological interest, with a number of monuments and findspots recorded by both the Herefordshire Council Historic Environment Record (HER) and Historic England (HE) in the wider surrounding area.

Of particular significance was the presence of a multi-period scheduled monument (List Entry 1005348) abutting part of the access track. Whilst formally undated and unnamed, the monument has been listed as holding multi period prehistoric monuments such as barrows and enclosures and a ring ditch identified as cropmarks.

Due to the proximity of the access track to the scheduled monument it was determined that a suitable form of archaeological mitigation would be the archaeological monitoring of all groundworks immediately adjacent to the monument. This amounted to c.550m of track bordering the western and southern sides of the scheduled area.

#### 2.3 AIMS AND OBJECTIVES

The objectives of the watching brief were as follows:

- › to ensure the excavation and recording of any archaeological remains that would be disturbed by the excavations; and
- › to produce and deposit a satisfactory archive and disseminate the results of the work via grey-literature reporting and publication as appropriate.



**ILLUS 2** West side of stripped area, looking west

### 3 METHOD

Fieldwork was conducted in accordance with the above mentioned WSI and in accordance with the following documents:

- › Code of Conduct (Chartered Institute for Archaeologists, 2014a)
- › Standard and Guidance for Archaeological Field Evaluations (Chartered Institute for Archaeologists, 2014b)

The watching brief took place on four days between 7 June 2018 and 3 July 2018, with the majority of the work being carried out on 3 July. The nature of the work involved the main contractor levelling off the ground along the route of the proposed new access track, accomplished by the removal of up to 0.20m of material from the higher side of the track route.

A 230m long section of track intended for monitoring (along the western boundary of the scheduled monument) had already been stripped and constructed prior to the arrival of the monitoring archaeologist on site. The remaining area of the track adjacent to the monument, measuring roughly 325m by 4.5m, was stripped under constant archaeological monitoring

The groundworks were carried out using a 13 tonne tracked 360° mechanical excavator fitted with a bladed bucket. All spoil heaps were visually scanned by the monitoring archaeologist for archaeological remains.

All deposits encountered were assigned a unique number and were recorded on pro forma recording sheets. 35mm black and white film prints were taken for record purposes and were supplemented by digital photographs. A graduated metric scale was visible in all photographs.

### 4 RESULTS

The only deposit encountered during the monitoring was the topsoil (1001). This was a mid-reddish-brown silty clay with occasional small sub-rounded stones. Modern material, such as glass and brick, was observed throughout. The topsoil extended below the maximum depth required for the groundworks (0.20m).

No archaeological features or deposits were identified.

### 5 CONCLUSION

No archaeological features or deposits were encountered during the watching brief, likely due to the shallow formation depth required for the track. It is not possible to state with certainty that no archaeological deposits were present within the unmonitored area, although considering the limited depth of impact and the negative results elsewhere, it is unlikely that archaeological deposits were impacted upon within the unmonitored section of track.



**ILLUS 3** East side of stripped area, looking west

## 6 REFERENCES

Chartered Institute for Archaeologists (CIfA) 2014a *Code of Conduct* (Reading) <http://http.www.archaeologists.net/sites/default/files/CodesofConduct.pdf> accessed 27 July 2018

Chartered Institute for Archaeologists (CIfA) 2014b *Standard and guidance for an archaeological watching brief* (Reading) [http://www.archaeologists.net/sites/default/files/CIfAS&GWatchingbrief\\_2.pdf](http://www.archaeologists.net/sites/default/files/CIfAS&GWatchingbrief_2.pdf) accessed 27 July 2018

Craddock-Bennett L 2017 *Site of New Access Road to North of Court Farm, Hampton Bishop, Herefordshire: Written Scheme of Investigation for Archaeological Watching Brief work* [unpublished client document] Headland Archaeology, Ref. CFBH17/01

Ratcliffe-Warren L 2015 *Written Scheme of Investigation: Archaeological Field Evaluation. Development for an access trackway at The Court, Hampton Bishop, Hereford* [unpublished client document] The Magnificent Science Company







© 2018 by Headland Archaeology (UK) Ltd

**Headland Archaeology South & East**  
Building 68C | Wrest Park | Silsoe | Bedfordshire MK45 4HS  
t 01525 861 578  
e southandeast@headlandarchaeology.com

**Headland Archaeology Midlands & West**  
Unit 1 | Clearview Court | Ivyford Rd | Hereford HR2 6JR  
t 01432 364 901  
e midlandsandwest@headlandarchaeology.com

**Headland Archaeology North**  
Unit 16 | Hillside | Beeston Rd | Leeds LS11 8ND  
t 0113 387 6430  
e north@headlandarchaeology.com

**Headland Archaeology Scotland**  
13 Jane Street | Edinburgh EH6 5HE  
t 0131 467 7705  
e scotland@headlandarchaeology.com

[www.headlandarchaeology.com](http://www.headlandarchaeology.com)