

WLFX/07



# WOOLFOX LODGE SOLAR AND WIND DEVELOPMENT, STRETTON, RUTLAND

Archaeological Geophysical Survey

commissioned by RES UK & Ireland Ltd

January 2015



# WOOLFOX LODGE SOLAR AND WIND DEVELOPMENT, STRETTON, RUTLAND

## Archaeological Geophysical Survey

commissioned by RES UK & Ireland Ltd

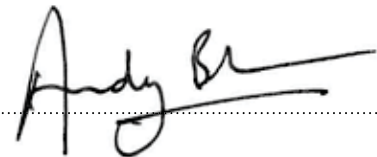
January 2015

project info

**HA JOB NO.** WLFX/07  
**NGR** SK 964 132  
**PARISH** Greetham  
**LOCAL AUTHORITY** Rutland  
**OASIS REF.** headland3-199751

project team

**PROJECT MANAGER** Andy Boucher  
**AUTHOR** Andy Boucher, Alister Bartlett  
**FIELDWORK** N. Paveley, P. Heykoop, M. Berry.  
**GRAPHICS** Alister Bartlett  
**APPROVED BY** Andy Boucher – Project Manager



© 2015 by Headland Archaeology (UK) Ltd

**SOUTH & EAST**

Headland Archaeology  
Building 68C, Wrest Park, Silsoe  
Bedfordshire MK45 4HS

01525 850 878

southandeast@headlandarchaeology.com

[www.headlandarchaeology.com](http://www.headlandarchaeology.com)





---

## CONTENTS

1	INTRODUCTION	1
2	THE SITE: TOPOGRAPHY AND GEOLOGY	1
3	ARCHAEOLOGICAL BACKGROUND	2
4	OBJECTIVES OF THE SURVEY	2
5	SURVEY PROCEDURE	2
	5.1 FLUXGATE MAGNETOMETER SURVEY	2
	5.2 SURVEY LOCATION	2
6	RESULTS	2
	6.1 ILLUSTRATION 3 (FEATURE A)	2
	6.2 ILLUSTRATIONS 4–5 (FEATURES B, C)	3
	6.3 ILLUSTRATION 6 (FEATURES D–L)	3
	6.4 ILLUSTRATION 7 (FEATURES M, N)	3
	6.5 ILLUSTRATION 8 (FEATURES O–X)	3
7	CONCLUSIONS	3
8	REFERENCE	3

## ILLUSTRATIONS

A3 plans at the following scales are included in this report:

### ILLUSTRATION 1

Survey location plan (@ 1:10,000)

### ILLUSTRATION 2

Key to location of Illustrations 3–26 (@ 1:10,000)

### ILLUSTRATIONS 3–8

Interpretation of survey findings (@ 1:2,500)

### ILLUSTRATIONS 9–15

Grey scale plots of magnetometer data (@ 1:2,000)

### ILLUSTRATIONS 16–26

Graphical plots of magnetometer survey data (with interpretation) (@ 1:1,500)

---

# WOOLFOX LODGE SOLAR AND WIND DEVELOPMENT, STRETTON, RUTLAND

## Archaeological Geophysical Survey

This geophysical survey was undertaken as part of an archaeological field evaluation of the site of a proposed solar PV and wind farm development at the former Woolfox Lodge airfield.

The survey covered surveyable ground within the boundary of the solar site, which is to occupy the former airfield, together with the wind turbines locations and associated access tracks to the north.

The survey has detected a dense and complex pattern of magnetic disturbances across large areas of the site. Much of this activity clearly represents debris from former airfield structures, and other related disturbances, but some may relate to features surviving from former landscapes.

These findings include parallel cultivation markings which may represent traces of ridge and furrow cultivation in several areas of the site, together with probable land drains. There are also possible traces of ditch-like features which may represent fragments of ditches or enclosures predating the modern landscape. Some of these (labelled F, G, Q on the interpreted plans) are weak or ill-defined, and of uncertain validity. Others (N, O, P) are more distinct.

## 1 INTRODUCTION

The survey was commissioned by RES UK and Ireland Ltd and undertaken by Headland Archaeology (UK) Ltd in association with the Bartlett Clark Consultancy. Fieldwork for the survey was done between 20 November and 12 December 2014.

The site is adjacent to the east side of the A1 about 3km south of Stretton, and centred approximately at NGR SK964132. The survey covered surveyable ground (excluding paved concrete tracks which are blanked out in the survey plots) within the red line boundary of the proposed solar site, together with 1 ha blocks at each of the nine turbine locations, and sample strips (20m wide) along the routes of new access tracks. (These are indicated by blue lines on the site location plan; **Illustration 1**). The total proposed survey area is indicated by red cross hatching in **Illustration 1**. The overall survey coverage (blue hatching) amounts to 75.9ha.

## 2 THE SITE: TOPOGRAPHY AND GEOLOGY

A full account is given of the location and condition of the site, and of its archaeological potential, in the Written Scheme of Investigation for the full archaeological evaluation, produced by Headland Archaeology [1]. The information in this document is not fully reproduced here, but the following notes are summarised in part from the WSI:

The proposed development area (PDA) occupies mainly arable land at an elevation of c. 100–105m AOD. It is on a solid geology of Cretaceous sedimentary bedrock including argillaceous rocks of the Rutland Group overlying Lincolnshire Limestones. There may be superficial deposits of Pleistocene Diamicton Till in parts of the site.

Soils on limestone bedrock of the kind present here are usually highly responsive to magnetic investigation, although the presence of superficial till might limit the strength of response in parts of the site.



One complicating factor for the survey is the presence of debris and disturbances caused by activities and installations relating to the presence at the site of Woolfox Lodge airfield, which was constructed in 1940, and finally closed in 1963. It is mentioned in the WSI that soft ground was reinforced in 1943 by depositing slag near the runway. This is likely to cause magnetic interference, in addition to interference relating to surviving and former trackways, and areas of concrete paving. Previous surveys of former airfield sites have usually served to delimit the extent of such disturbances, as well as to test for the presence or otherwise of archaeological findings from the less disturbed parts of the site.

### 3 ARCHAEOLOGICAL BACKGROUND

It is mentioned in the WSI that there has been only limited previous archaeological investigation both within the PDA, and within a surrounding 1km radius study area. Various probable Iron Age enclosures are known in the outer study area, but no prehistoric remains or cropmarks are recorded from the PDA. It is concluded in the WSI that (in the absence so far of available direct evidence) there remains a moderate potential for currently unknown archaeological features of medieval or earlier date within the PDA.

### 4 OBJECTIVES OF THE SURVEY

The aim of the geophysical survey was to identify where possible the extent and character of any archaeological remains capable of producing a magnetic response, and to test for evidence of any previously unrecorded archaeological sites or features. This information could then inform any further archaeological fieldwork which may be required during later stages of the evaluation. The magnetometer responds to cut features such as ditches and pits when they are silted with topsoil, which usually has a higher magnetic susceptibility than the underlying natural subsoil. It also detects the thermoremanent magnetism of fired materials, notably baked clay structures such as kilns or hearths, and so responds preferentially to the presence of ancient settlement or industrial remains. It is also strongly affected by ferrous and other debris of recent origin.

Magnetic anomalies may be weakened if there is a lack of magnetic contrast between the contents of earth-filled features and the surrounding natural soil, as is sometimes the case on clay soils, or if features are buried at depth beneath subsequent deposits.

### 5 SURVEY PROCEDURE

#### 5.1 FLUXGATE MAGNETOMETER SURVEY

The site was investigated by means of a recorded magnetometer survey. Readings were collected along transects 1m apart using Bartington 1m fluxgate gradiometers, and are plotted at 25cm intervals along each transect. The survey data is shown at 1:2000 scale as a grey scale plot in **Illustrations 9–15**, and as a graphical (x-y trace) plot at 1:1500 scale in **Illustrations 16–26**. Comparison of these

alternative presentations allows the detected magnetic anomalies to be examined in plan and profile respectively. [Inclusion of the xy plots in the report also permits further re-interpretation of the data if required.] An interpretation of the findings is also shown superimposed on **Illustrations 16–26** (which permits the interpreted outlines to be compared with the underlying data). A further summary of findings is presented in **Illustrations 3–8**.

The graphical plots in **Illustrations 16–26** shows the magnetometer readings after minimal pre-processing [of the kind permitted by English Heritage (2008) Geophysical Survey in Archaeological Field Evaluation Section 4.8]. This includes adjustment for irregularities in line spacing caused by variations in the instrument zero setting, and truncation of extreme values. Additional weak 2D low pass filtering has been applied to the grey scale plot to adjust background noise levels.

Colour coding has been used in the interpretation to distinguish different effects. The interpretation is intended to categorize most of the identifiable magnetic anomalies, but cannot reproduce the detail of the grey scale plots.

Magnetic anomalies which may show characteristics to be expected from features of potential archaeological interest are outlined in red. Background magnetic anomalies which may be of natural or non-archaeological origin are indicated in light brown, and probable recent disturbances are in grey. [These categories cannot be clearly distinguished, given the presence of items of rubble or ferrous debris across much of the site, and some of the disturbances indicated in brown are likely to result from airfield debris, as well as natural background magnetic disturbances.] Possible cultivation effects are indicated by green lines, and some of the more conspicuous ferrous objects (identifiable as narrow spikes in the graphical plots) are marked in light blue. Probable land drains are also marked. Other former ditches or boundaries which appear to relate to the plan of the airfield are shown in brown.

#### 5.2 SURVEY LOCATION

The survey grid was set out and tied to the OS grid using a Trimble ProXRT GPS system (with VRS correction to give accuracy of c. 0.1m). The plans are therefore geo-referenced, and OS co-ordinates of map locations can be read from the AutoCAD version of the plans, which can be supplied with this report.

### 6 RESULTS

The findings from the site have been described below in an approximate north – south sequence corresponding to the areas shown in the 1:2500 summary plans (**Illustration 3–8**). Various findings which may require further description (but which are not all necessarily of archaeological relevance) are labelled (A – X) in the illustrations. Comments on these findings are as follows:

#### 6.1 ILLUSTRATION 3 (FEATURE A)

The magnetic disturbances outlined in blue at the eastern edge of the track to turbine 9 are caused by the nearby pipeline which is

marked on the map to the east of the track. (Various other pipes which have been detected in the survey indicated elsewhere by broken blue lines, with associated areas of magnetic disturbance similarly outlined in blue.) Other findings within the T9 survey block are limited to another possible pipe, and minor disturbances unlikely to be of archaeological origin.

## 6.2 ILLUSTRATIONS 4–5 (FEATURES B, C)

The magnetic anomalies B and C are outlined in red and labelled because they are features which could, in a relevant context, represent silted pits, as are often found at ancient settlement sites. In this case they are isolated and rather larger than would be expected for individual pits of archaeological origin. They probably therefore represent naturally silted hollows in the subsoil (as is likely to be the case also for similar features indicated elsewhere in the survey). Such magnetic anomalies are common on clay soils, and here might represent natural pockets of topsoil in the glacial till. There are perhaps some weak linear markings which could relate to cultivation in the T7 survey block, but no identifiable findings in T8, and only recent disturbances at T5 and T6. Findings at T2 are mainly pipes and recent or ferrous debris

## 6.3 ILLUSTRATION 6 (FEATURES D–L)

Dense disturbances at D in the T1 survey block are similar to those seen at the north end of the former runway in T3, and must represent remains of concrete paving (perhaps a second runway ?)

Linear features E, K, L align with airfield features, and so may be former drains, ditches or cable trenches relating to the airfield. Other linear markings (indicated by blue/purple broken lines in **Illustrations 6–8**) indicate sequences of small magnetic anomalies which typically represent clay pipes, and so may indicate land drains.

Linear features shown in red (including F, G) may represent silted ditches, but are fragmented and isolated. There may be pit-like features (as would be expected at an archaeological site) in the vicinity of G, but several of them (including H) are rather large (as at B, C above), and could be natural.

There are some quite distinct cultivation markings (perhaps variously aligned, and so representing more than one period of cultivation) in the centre of **Illustration 6** around J.

## 6.4 ILLUSTRATION 7 (FEATURES M, N)

The linear markings at M are made up of sequences of small magnetic anomalies and may represent land drains. There is a

dense scatter of airfield debris around the paved areas nearby. This provides a rather disturbed background to the possible ditch-like features shown in red at N. These could perhaps represent part of an ancient ditched enclosure or settlement site (particularly given the presence of similar features at O, P nearby), but the disturbed context means these findings cannot be interpreted with any great confidence.

## 6.5 ILLUSTRATION 8 (FEATURES O–X)

There is a complex superimposition of findings at the east of the site where various features have been marked in red. These may include possible hut circles (O) enclosed by a boundary P, but intersected by cultivation features (green) of probably later date. There is dense background magnetic activity (as indicated by magnetic anomalies outlined in light brown and grey). This creates difficulties for detailed interpretation, but a strong possibility remains that archaeological features could be present in this part of the site.

It is possible that fragmentary traces of another ditched enclosure could be present at Q, with a further large (and perhaps natural) pit-like feature at R. A linear sequence of disturbances (S) could represent a spread of debris from an infilled ditch (or perhaps a ploughed-out track). There further distinct cultivation markings at T and U, and remains of paved areas (perhaps aircraft parking bays) at V, W, X.

# 7 CONCLUSIONS

The area of the site which appears to be of the greatest archaeological potential is at the east of the proposed solar farm, where features (including O and P) could represent traces of ditched enclosures containing possible late prehistoric hut circles. The remains of this possible ancient settlement site are intersected (and perhaps partially eroded) by a later cultivation pattern.

A possibility remains that traces of similar features could be present at other locations including N and Q (and more doubtfully F, G), but these features are less clearly defined, and their interpretation is more problematic.

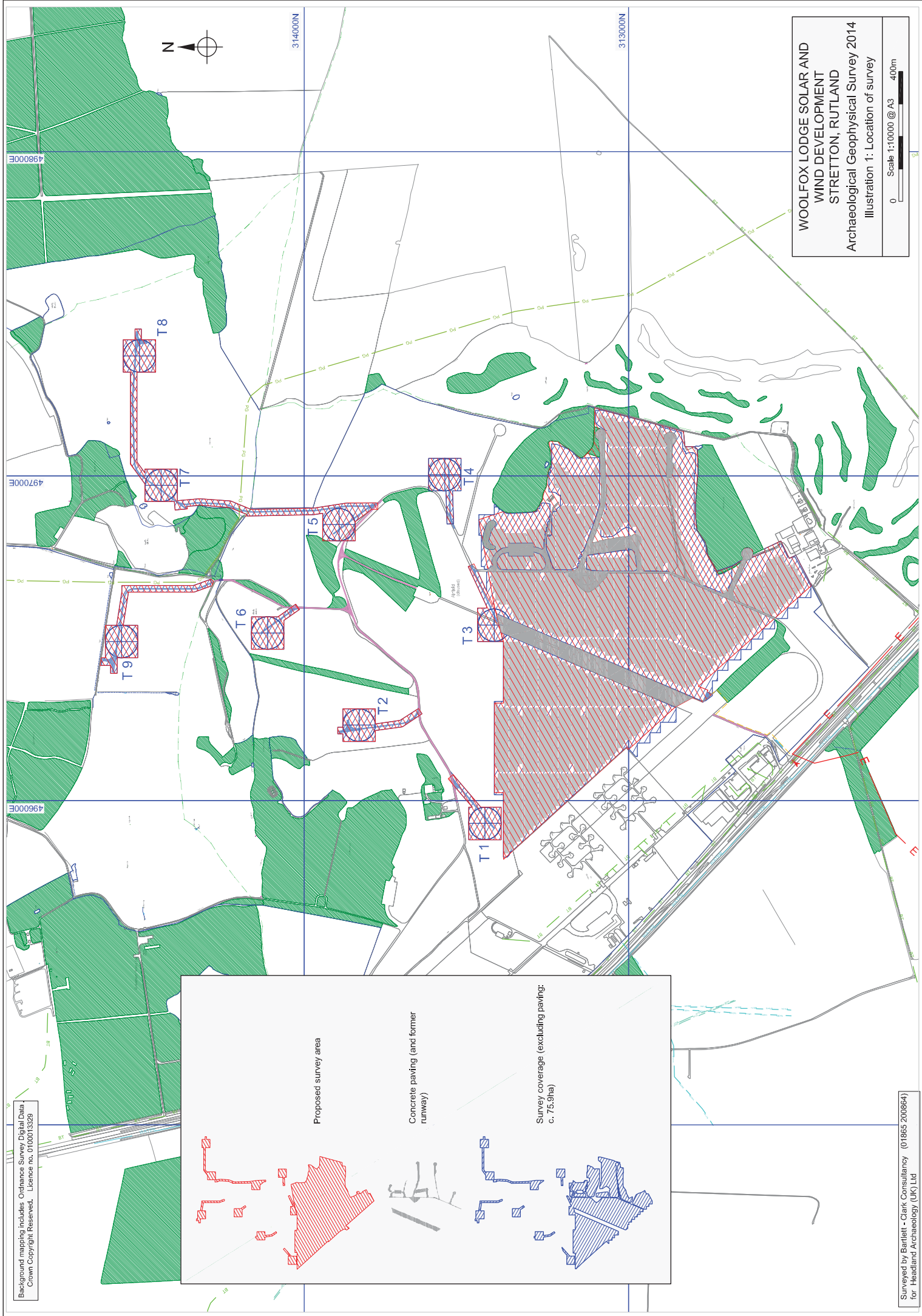
# 8 REFERENCE

- [1] *Archaeological Evaluation: Woolfox Lodge Solar and Wind Development, Stretton, Rutland*, Document prepared for RES by Headland Archaeology (UK) Ltd Reference WLFX13; October 2014.





Background mapping includes Ordnance Survey Digital Data  
© Crown Copyright Reserved. Licence no. 0100015328



**Proposed survey area**

**Concrete paving (and former runway)**

**Survey coverage (excluding paving):  
c. 75.9ha**

**WOOLFOX LODGE SOLAR AND  
WIND DEVELOPMENT  
STRETTON, RUTLAND**  
Archaeological Geophysical Survey 2014  
Illustration 1: Location of survey

0 400m  
Scale 1:10000 @ A3

Surveyed by Bartlett - Clark Consultancy (01865 200864)  
for Headland Archaeology (UK) Ltd

496000E

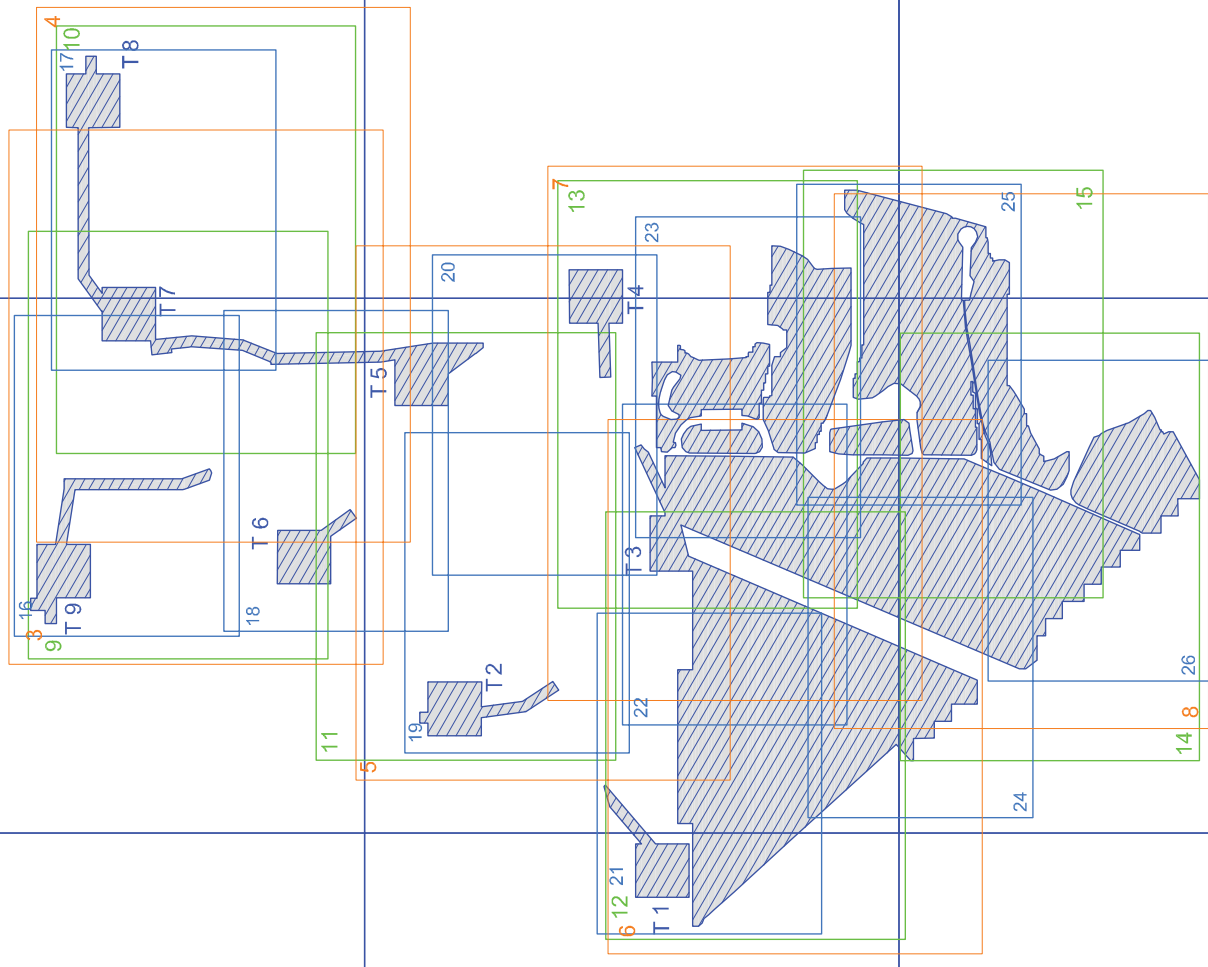
497000E




498000E



314000N

313000N



-  Location of 1:2500 scale summary plans (3-8)
-  Location of 1:2000 grey scale plots (9-15)
-  Location of 1:1500 scale data plots (16-26)

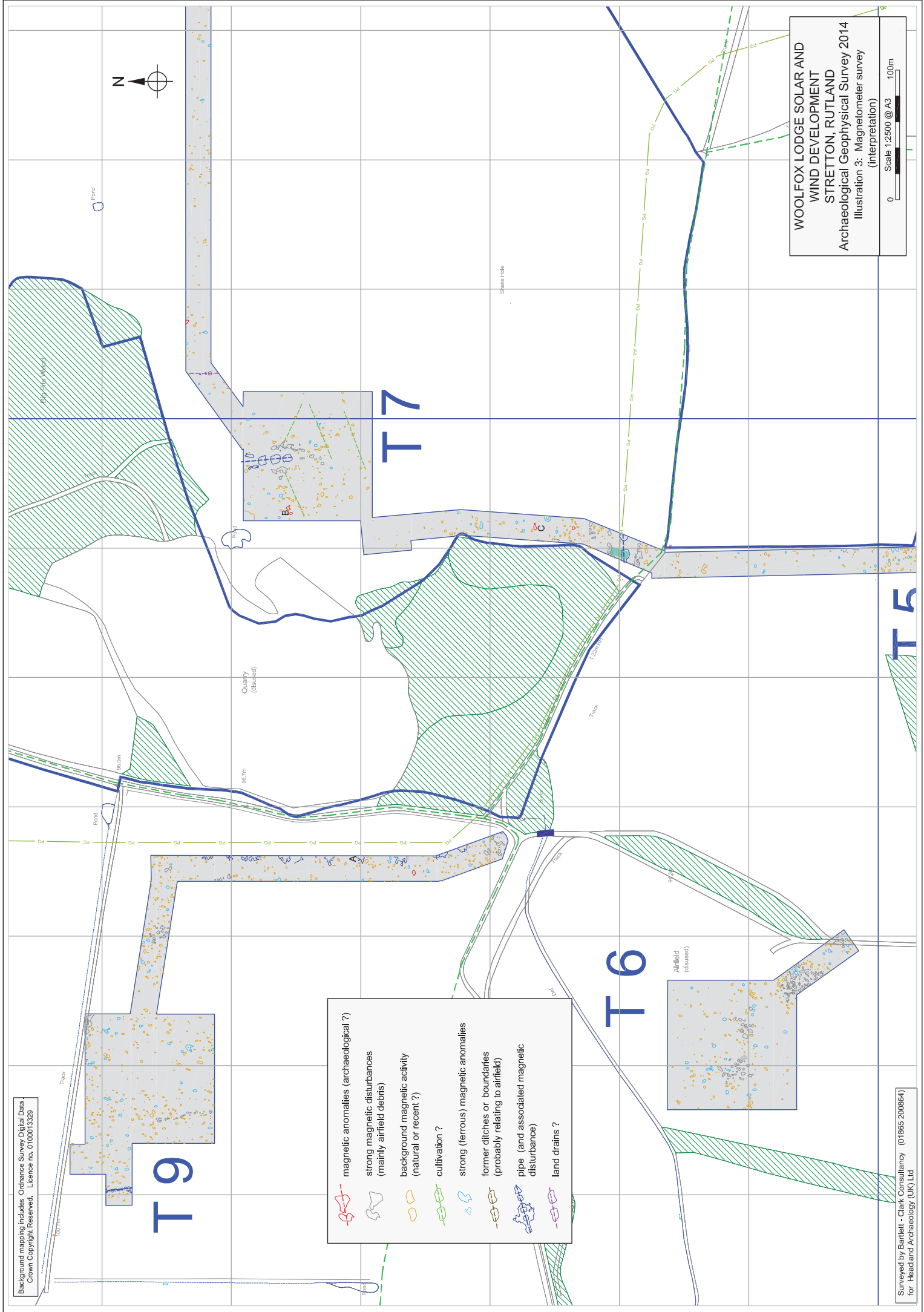
**WOOLFOX LODGE SOLAR AND WIND DEVELOPMENT**  
STRETTON, RUTLAND

Archaeological Geophysical Survey 2014

Illustration 2: Location of illustrations 3-26

0  400m

Scale 1:10000 @ A3



	magnetic anomalies (archaeological ?)
	strong magnetic disturbances (mainly airfield debris)
	background magnetic activity (natural or recent ?)
	cultivation ?
	strong (ferrous) magnetic anomalies
	former ditches or boundaries (probably relating to airfield)
	pipe (and associated magnetic disturbance)
	land drains ?

WOOLFOX LODGE SOLAR AND  
 WIND DEVELOPMENT  
 STRETTON, RUTLAND  
 Archaeological Geophysical Survey 2014  
 Illustration 3: Magnetometer survey  
 (interpretation)

0 100m  
 Scale 1:2500 @ A3



T8

T7

T5

-6

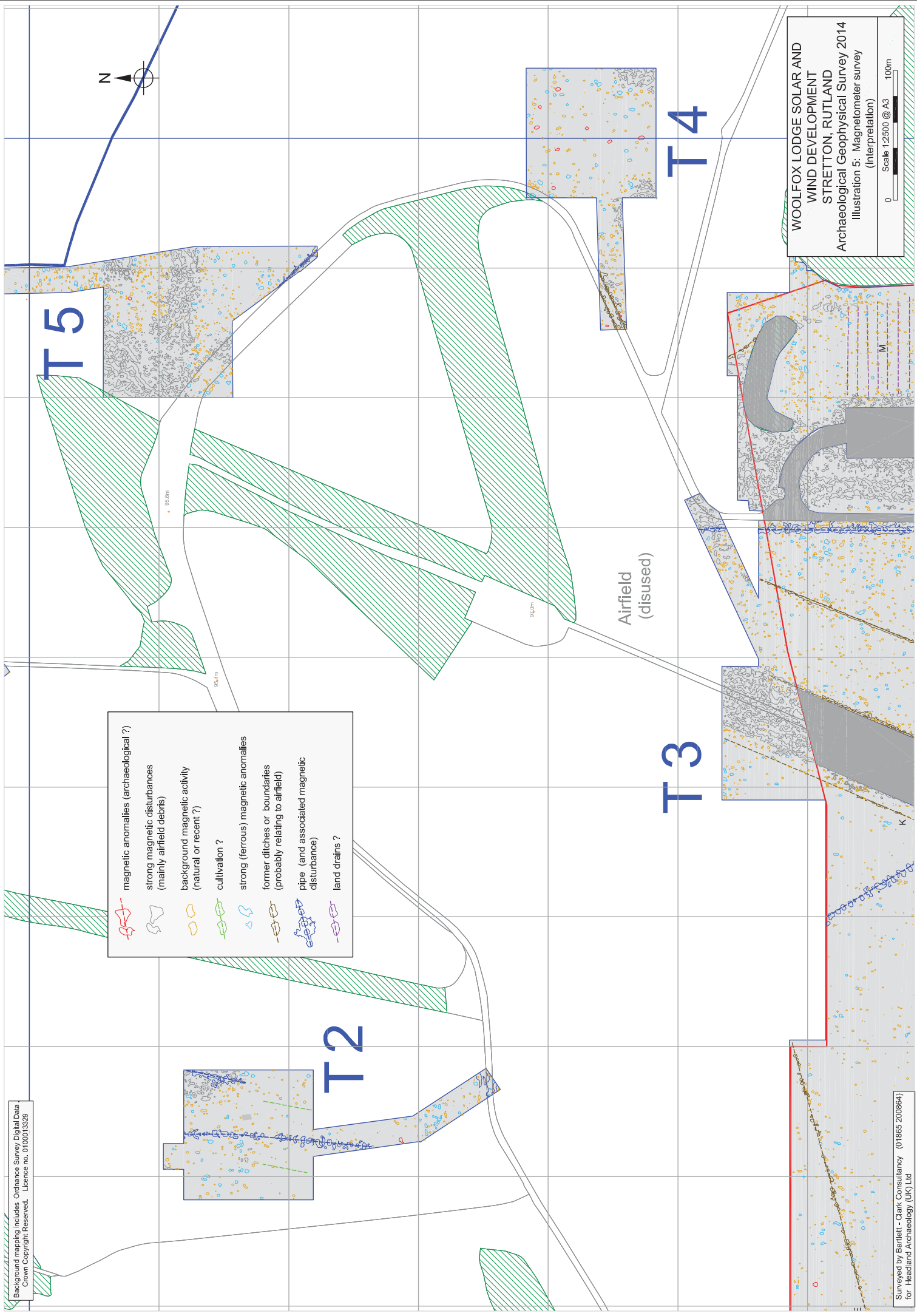
	magnetic anomalies (archaeological ?)
	strong magnetic disturbances (mainly airfield debris)
	background magnetic activity (natural or recent ?)
	cultivation ?
	strong (ferrous) magnetic anomalies
	former ditches or boundaries (probably relating to airfield)
	pipe (and associated magnetic disturbance)
	land drains ?

WOOLFOX LODGE SOLAR AND  
WIND DEVELOPMENT  
STRETTON, RUTLAND  
Archaeological Geophysical Survey 2014  
Illustration 4: Magnetometer survey  
(interpretation)

0 100m  
Scale 1:2500 @ A3



	magnetic anomalies (archaeological ?)
	strong magnetic disturbances (mainly airfield debris)
	background magnetic activity (natural or recent ?)
	cultivation ?
	strong (ferrous) magnetic anomalies
	former ditches or boundaries (probably relating to airfield)
	pipe (and associated magnetic disturbance)
	land drains ?



WOOLFOX LODGE SOLAR AND  
WIND DEVELOPMENT  
STRETTON, RUTLAND  
Archaeological Geophysical Survey 2014  
Illustration 5: Magnetometer survey  
(interpretation)

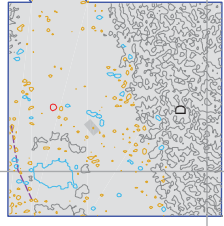
0 100m  
Scale 1:2500 @ A3

Airfield  
(disused)

T3











T1



WOOLFOX LODGE SOLAR AND  
WIND DEVELOPMENT  
STRETTON, RUTLAND  
Archaeological Geophysical Survey 2014  
Illustration 6: Magnetometer survey  
(interpretation)

Scale 1:2500 @ A3  
0 100m

	magnetic anomalies (archaeological ?)
	strong magnetic disturbances (mainly airfield debris)
	background magnetic activity (natural or recent ?)
	cultivation ?
	strong (ferrous) magnetic anomalies
	former ditches or boundaries (probably relating to airfield)
	pipe (and associated magnetic disturbance)
	land drains ?

-  magnetic anomalies (archaeological ?)
-  strong magnetic disturbances  
(mainly airfield debris)
-  background magnetic activity  
(natural or recent ?)
-  cultivation ?
-  strong (ferrous) magnetic anomalies
-  former ditches or boundaries  
(probably relating to airfield)
-  pipe (and associated magnetic  
disturbance)
-  land drains ?

Airfield  
(disused)

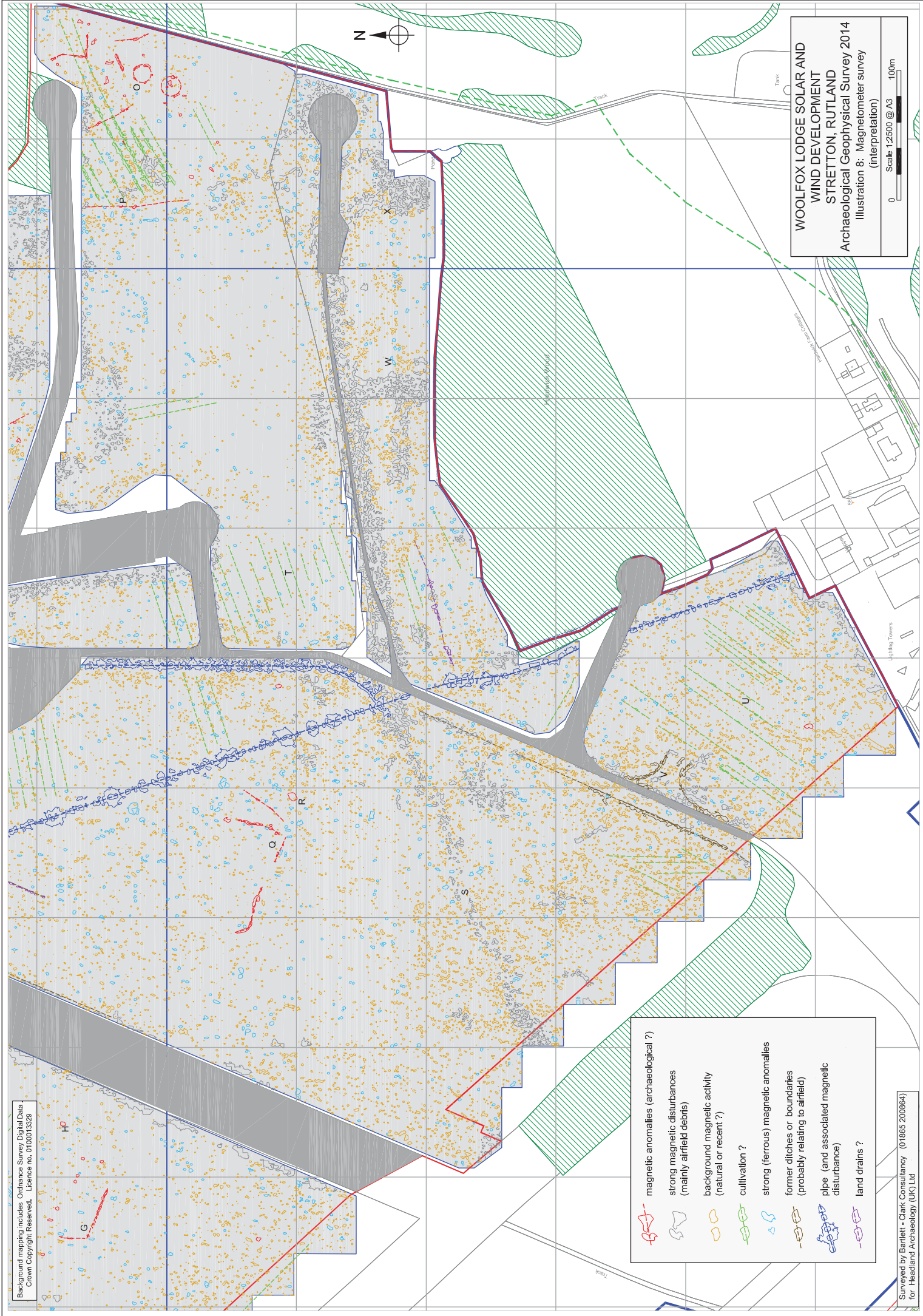
T3

T4

WOOLFOX LODGE SOLAR AND  
 WIND DEVELOPMENT  
 STRETTON, RUTLAND  
 Archaeological Geophysical Survey 2014  
 Illustration 7: Magnetometer survey  
 (interpretation)

Scale 1:2500 @ A3  
 0 100m

Background mapping includes Ordnance Survey Digital Data  
Crown Copyright Reserved. Licence no. 0100015528



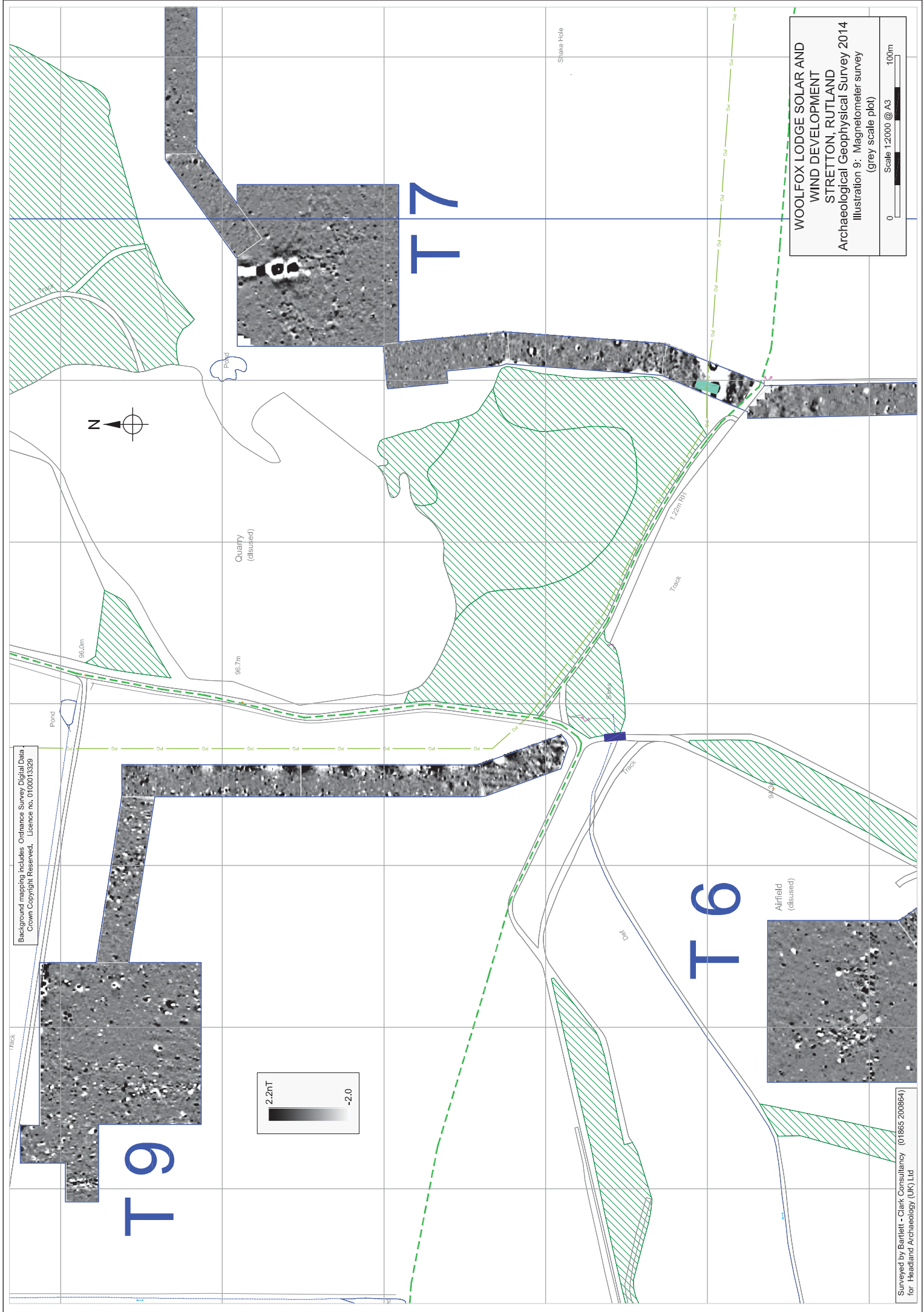
WOOLFOX LODGE SOLAR AND  
WIND DEVELOPMENT  
STRETTON, RUTLAND  
Archaeological Geophysical Survey 2014  
Illustration 8: Magnetometer survey  
(interpretation)

Scale 1:2500 @ A3  
0 100m

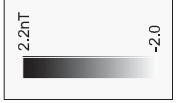
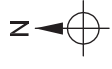
- magnetic anomalies (archaeological ?)
- strong magnetic disturbances (mainly airfield debris)
- background magnetic activity (natural or recent ?)
- cultivation ?
- strong (ferrous) magnetic anomalies
- former ditches or boundaries (probably relating to airfield)
- pipe (and associated magnetic disturbance)
- land drains ?

Surveyed by Bartlett - Clark Consultancy (01865 200864)  
for Headland Archaeology (UK) Ltd





Background mapping includes Ordnance Survey Digital Data  
Crown Copyright Reserved. Licence no. 0100013329



**WOOLFOX LODGE SOLAR AND  
WIND DEVELOPMENT  
STRETTON, RUTLAND**  
Archaeological Geophysical Survey 2014  
Illustration 9: Magnetometer survey  
(grey scale plot)



Surveyed by Bartlett - Clark Consultancy (01865 200864)  
for Headland Archaeology (UK) Ltd

Background mapping includes Ordnance Survey Digital Data  
Crown Copyright Reserved. Licence no. 0100015528

96.7m  
Quarry  
(disused)

Pond

Shake Hole

Track

1:22m RH

1:22m RH



# T8

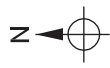
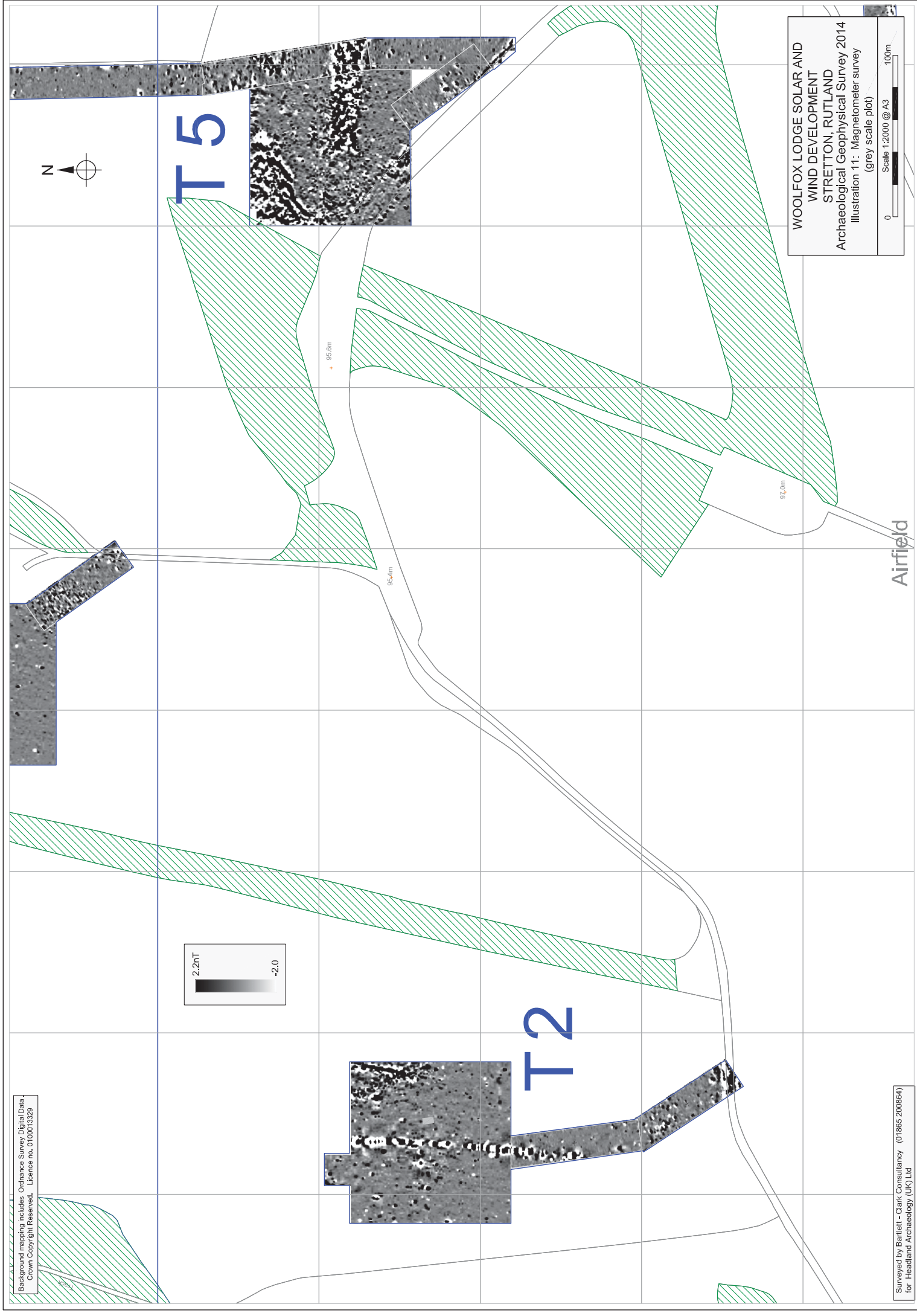
# T7



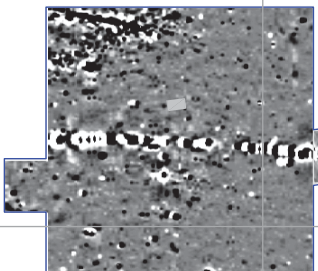
WOOLFOX LODGE SOLAR AND  
WIND DEVELOPMENT  
STRETTON, RUTLAND  
Archaeological Geophysical Survey 2014  
Illustration 10: Magnetometer survey  
(grey scale plot)

Scale 1:2000 @ A3  
0 100m

Surveyed by Bartlett - Clark Consultancy (01865 200864)  
for Headland Archaeology (UK) Ltd



T5



T2

WOOLFOX LODGE SOLAR AND  
WIND DEVELOPMENT  
STRETTON, RUTLAND  
Archaeological Geophysical Survey 2014  
Illustration 1: Magnetometer survey  
(grey scale plot)

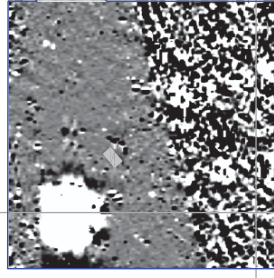
Scale 1:2000 @ A3

0 100m

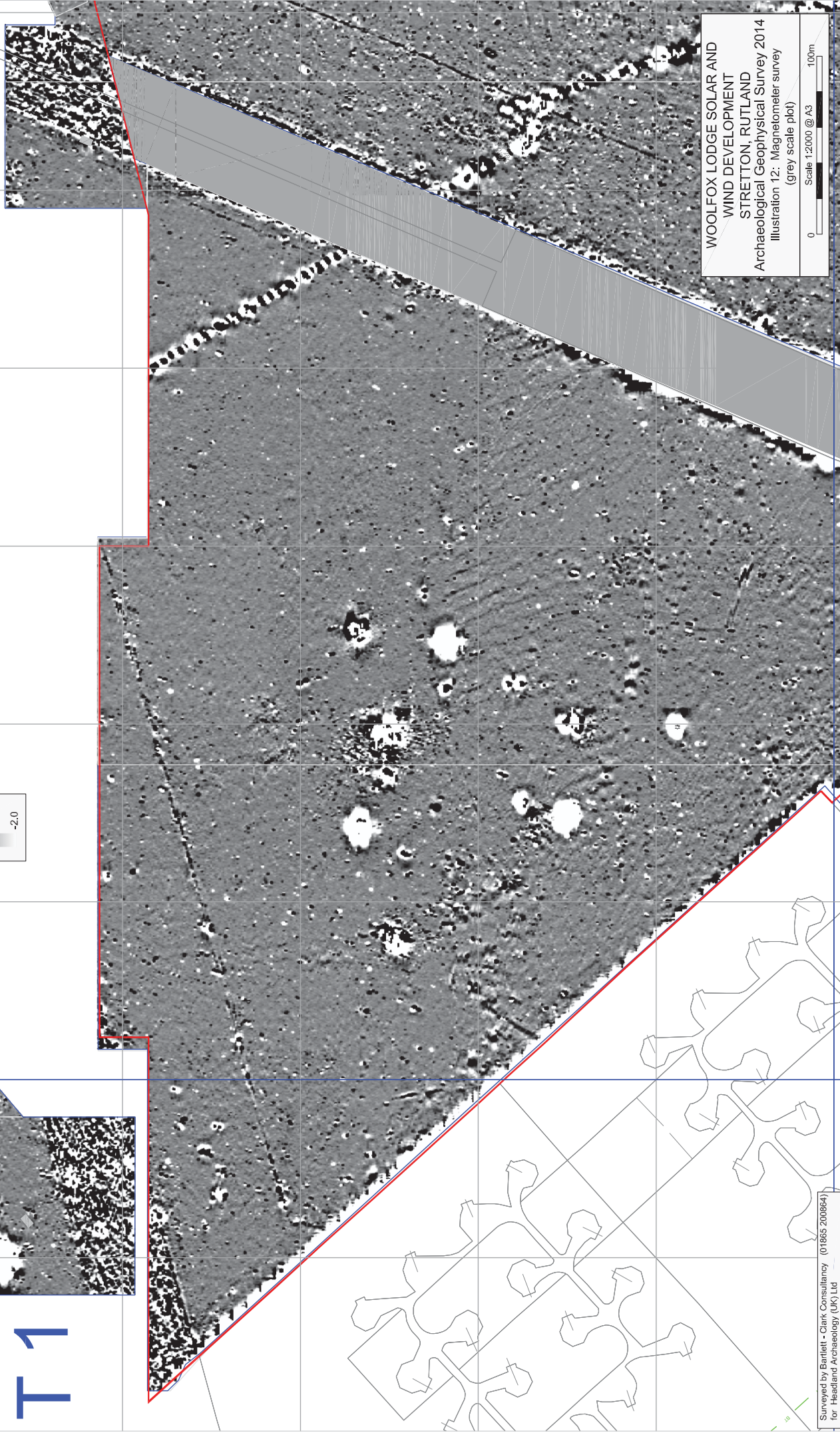
Airfield

Background mapping includes Ordnance Survey Digital Data  
Crown Copyright Reserved. Licence no. 0100015528

T1



T3



WOOLFOX LODGE SOLAR AND  
WIND DEVELOPMENT  
STRETTON, RUTLAND  
Archaeological Geophysical Survey 2014  
Illustration 12: Magnetometer survey  
(grey scale plot)

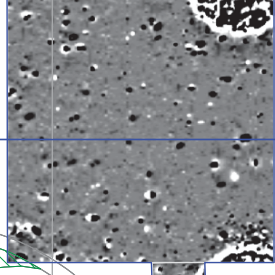


Surveyed by Bartlett - Clark Consultancy (01865 200864)  
for Headland Archaeology (UK) Ltd

Background mapping includes Ordnance Survey Digital Data  
© Crown Copyright Reserved. Licence no. 0100015528



T 3



T 4

Airfield  
(disused)

92.0m



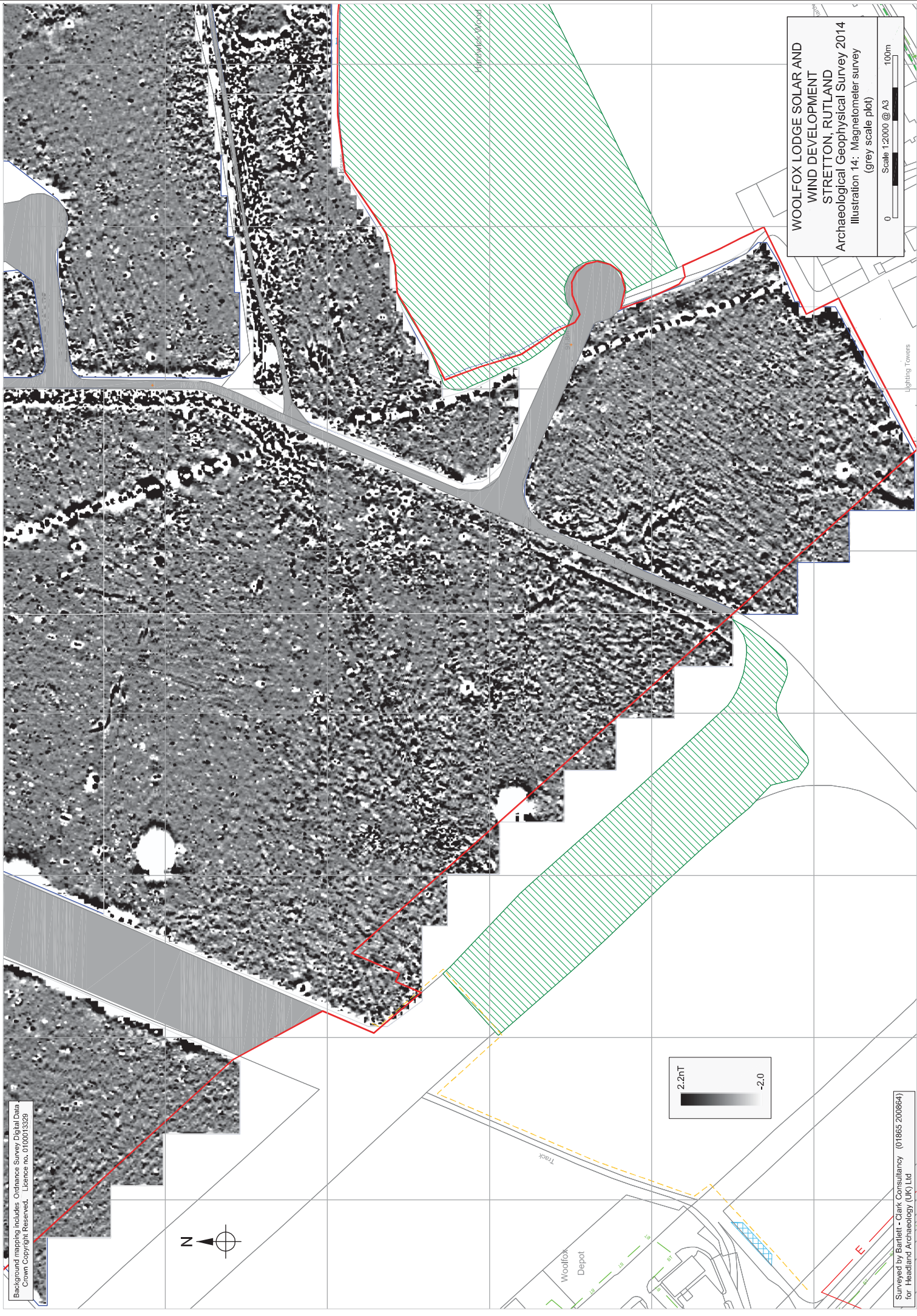
Track

The Cottage

WOOLFOX LODGE SOLAR AND  
WIND DEVELOPMENT  
STRETTON, RUTLAND  
Archaeological Geophysical Survey 2014  
Illustration 13: Magnetometer survey  
(grey scale plot)



Surveyed by Bartlett - Clark Consultancy (01865 200864)  
for Headland Archaeology (UK) Ltd



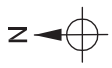
Background mapping includes: Ordnance Survey Digital Data  
 Crown Copyright Reserved. Licence no. 0100015529



**WOOLFOX LODGE SOLAR AND  
 WIND DEVELOPMENT  
 STRETTON, RUTLAND**  
 Archaeological Geophysical Survey 2014  
 Illustration 14: Magnetometer survey  
 (grey scale plot)

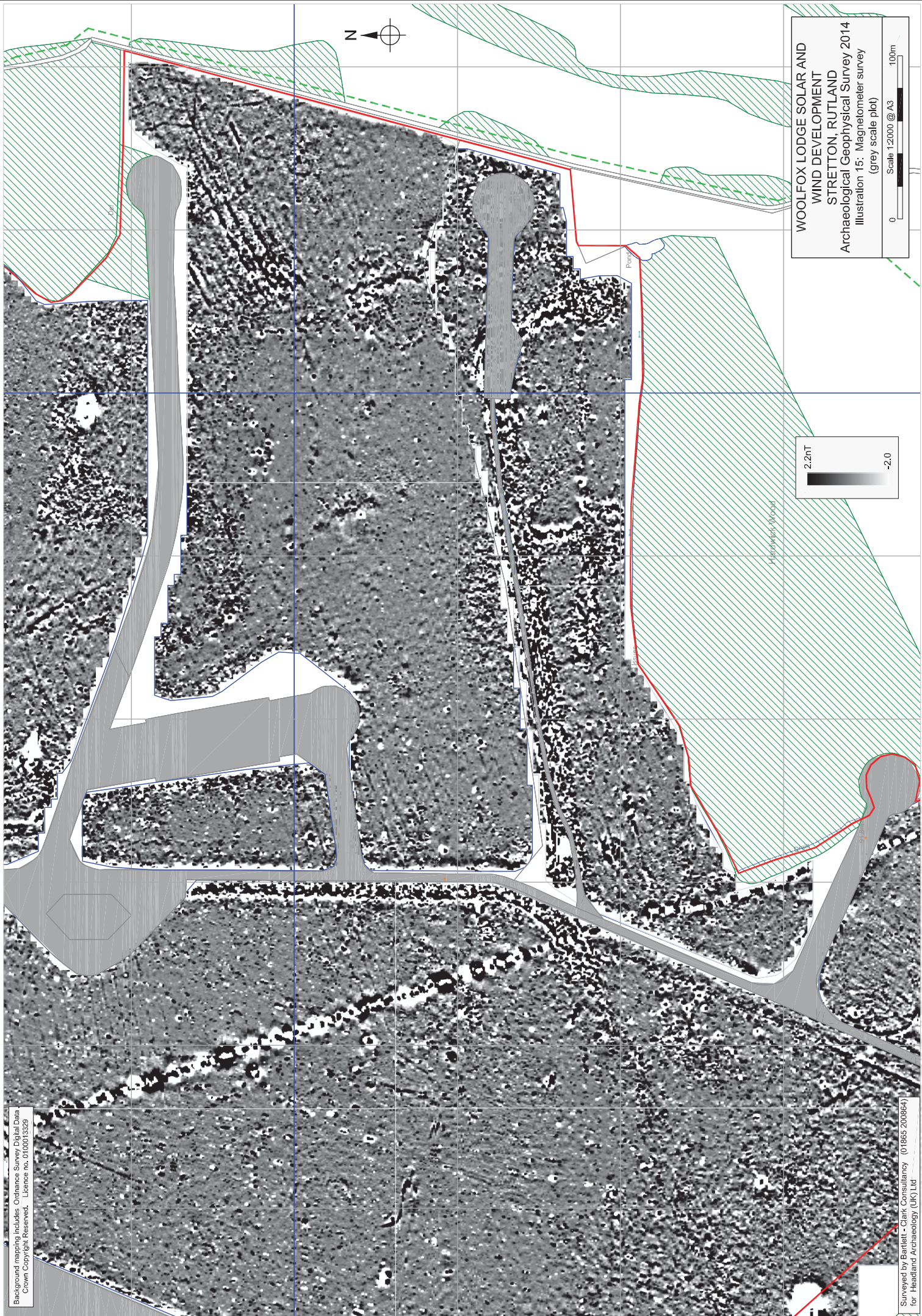
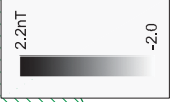
Scale 1:2000 @ A3  
 0 100m

Surveyed by Bartlett - Clark Consultancy (01865 200864)  
 for Headland Archaeology (UK) Ltd



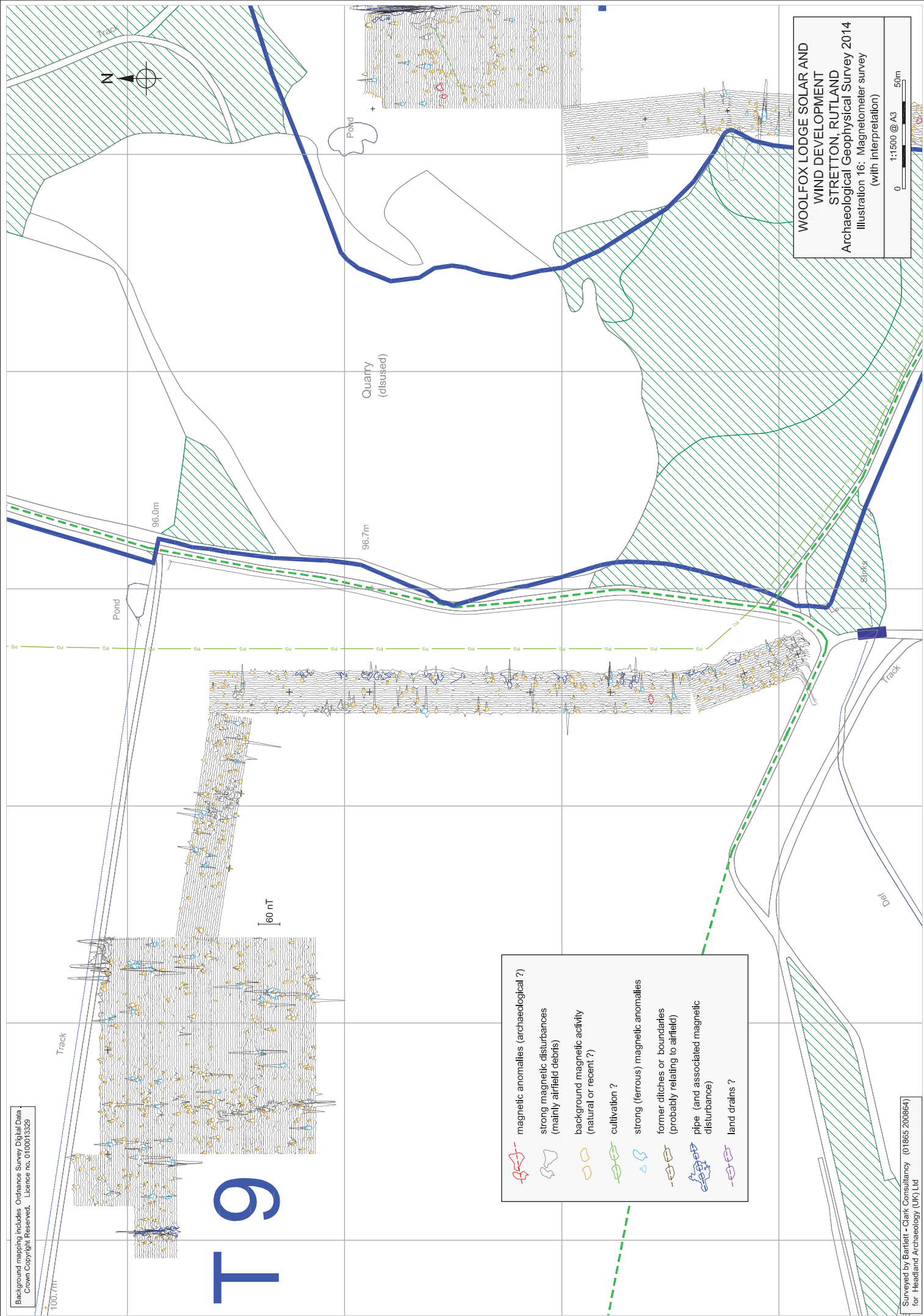
WOOLFOX LODGE SOLAR AND  
WIND DEVELOPMENT  
STRETTON, RUTLAND  
Archaeological Geophysical Survey 2014  
Illustration 15: Magnetometer survey  
(grey scale plot)

Scale 1:2000 @ A3  
0 100m



Background mapping includes: Ordnance Survey Digital Data  
Copyright Reserved. Licence no. 0100015528









Surveyed by Bartlett - Clark Consultancy (01865 200864)  
for Headland Archaeology (UK) Ltd



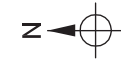
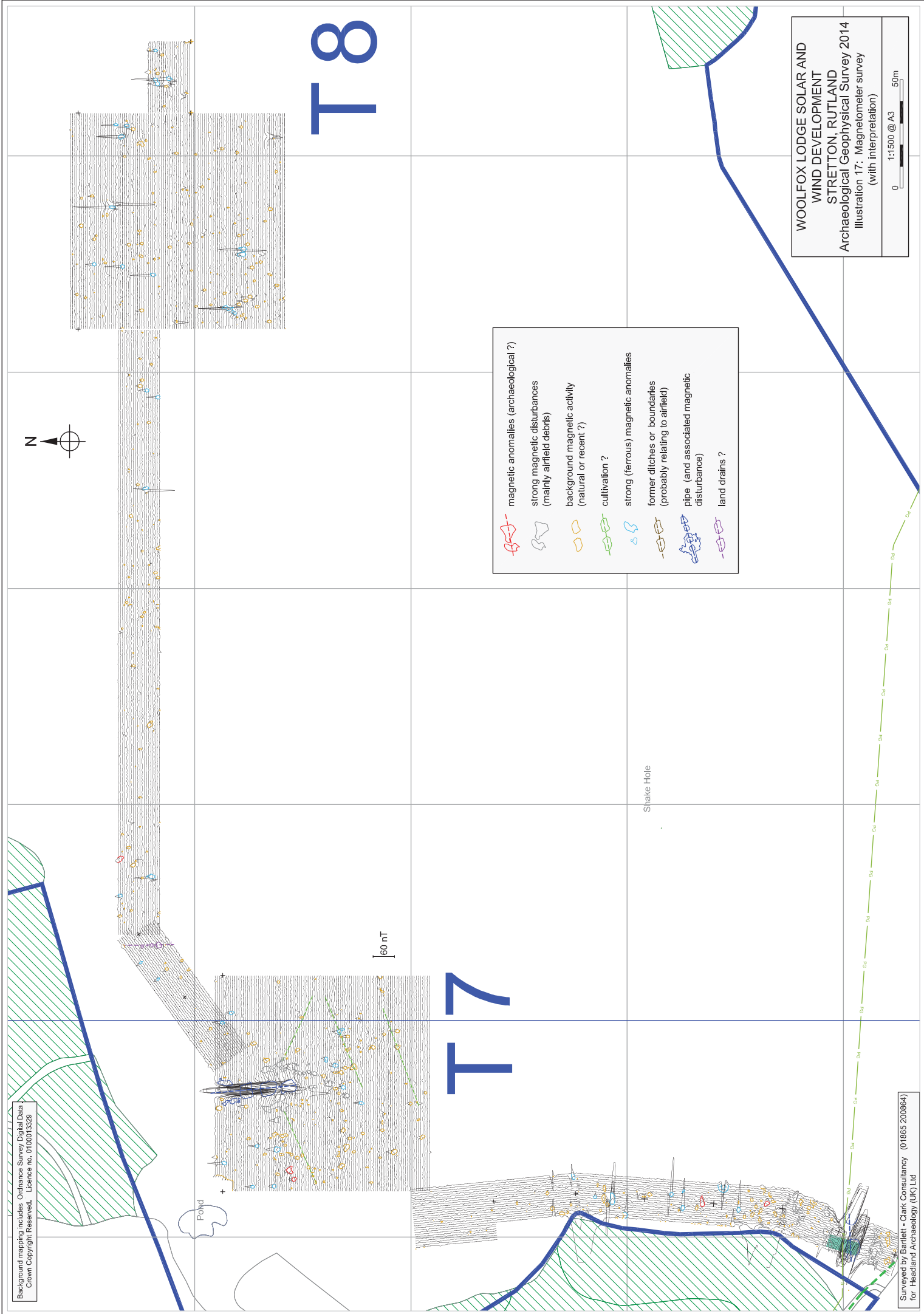
**T9**

60 nT

WOOLFOX LODGE SOLAR AND  
 WIND DEVELOPMENT  
 STRETTON, RUTLAND  
 Archaeological Geophysical Survey 2014  
 Illustration 16: Magnetometer survey  
 (with interpretation)

-  magnetic anomalies (archaeological ?)
-  strong magnetic disturbances (mainly airfield debris)
-  background magnetic activity (natural or recent ?)
-  cultivation ?
-  strong (ferrous) magnetic anomalies
-  former ditches or boundaries (probably relating to airfield)
-  pipe (and associated magnetic disturbance)
-  land drains ?



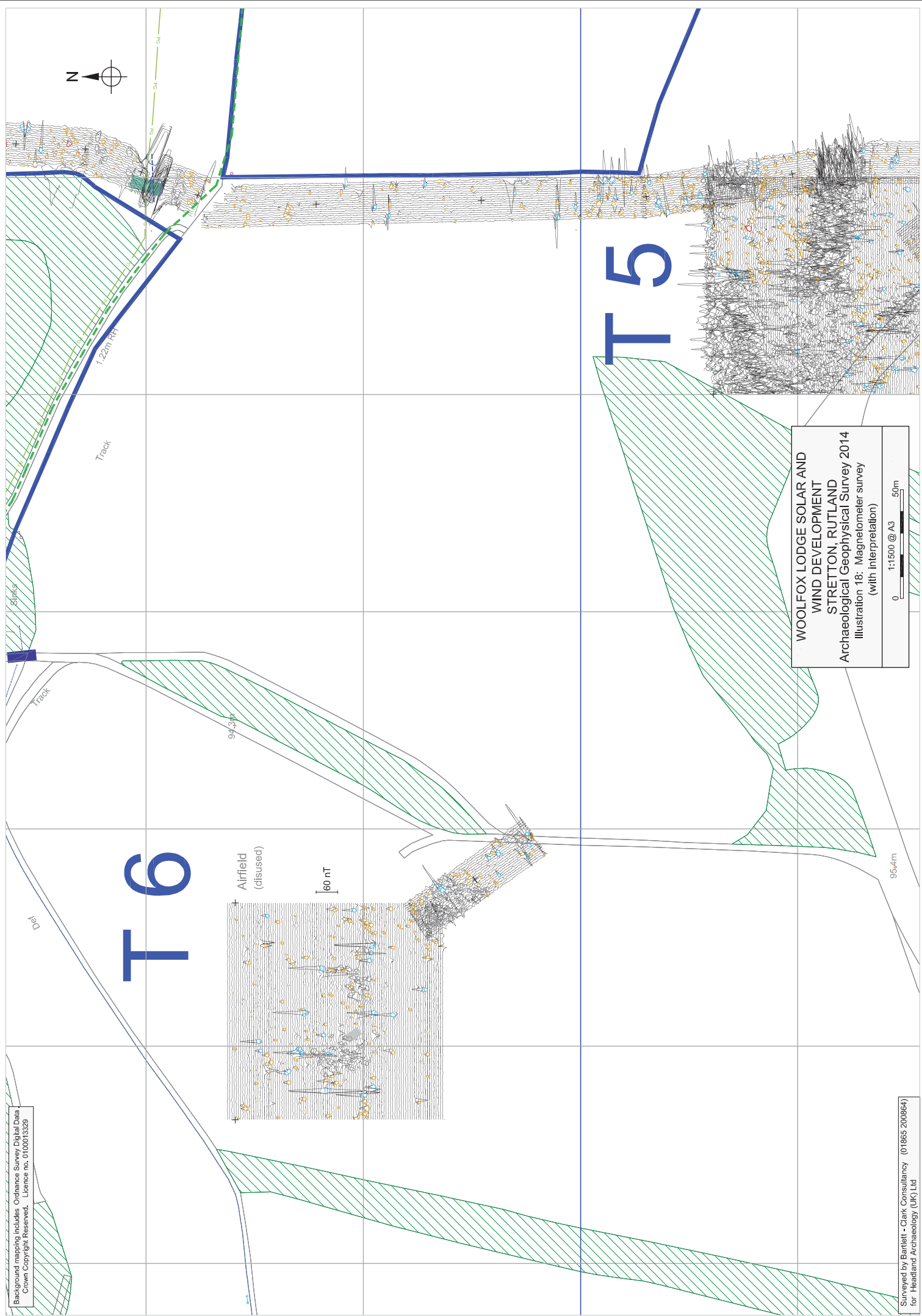


T8

T7

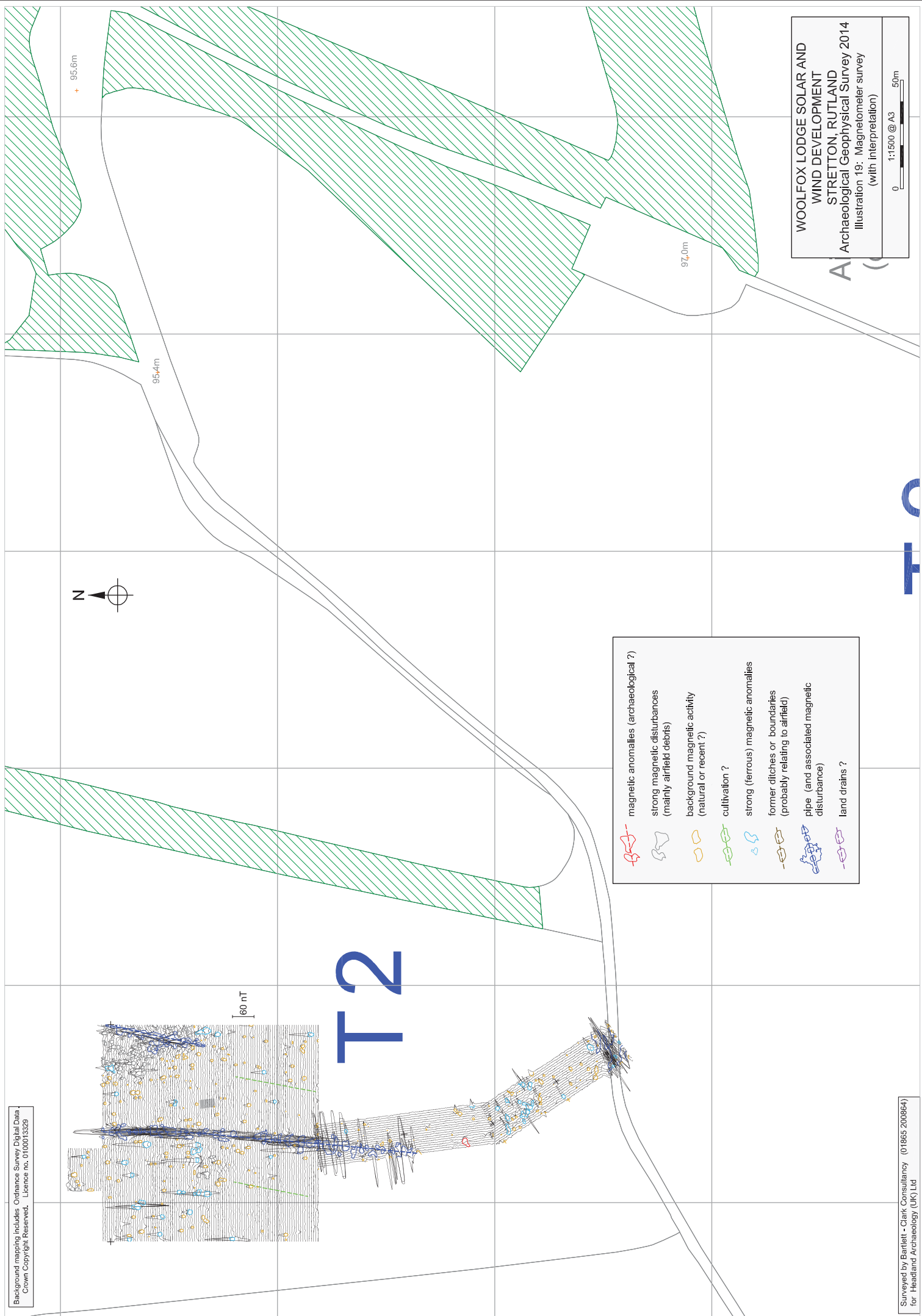
- magnetic anomalies (archaeological ?)
- strong magnetic disturbances (mainly airfield debris)
- background magnetic activity (natural or recent ?)
- cultivation ?
- strong (ferrous) magnetic anomalies
- former ditches or boundaries (probably relating to airfield)
- pipe (and associated magnetic disturbance)
- land drains ?

WOOLFOX LODGE SOLAR AND WIND DEVELOPMENT  
STRETTON, RUTLAND  
Archaeological Geophysical Survey 2014  
Illustration 17: Magnetometer survey (with interpretation)



WOOLFOX LODGE SOLAR AND  
WIND DEVELOPMENT  
STRETTON, RUTLAND  
Archaeological Geophysical Survey 2014  
Illustration 18: Magnetometer survey  
(with interpretation)





95.6m

95.4m

97.0m

# T2

60 nT

	magnetic anomalies (archaeological ?)
	strong magnetic disturbances (mainly airfield debris)
	background magnetic activity (natural or recent ?)
	cultivation ?
	strong (ferrous) magnetic anomalies
	former ditches or boundaries (probably relating to airfield)
	pipe (and associated magnetic disturbance)
	land drains ?

WOOLFOX LODGE SOLAR AND  
WIND DEVELOPMENT  
STRETTON, RUTLAND  
Archaeological Geophysical Survey 2014  
Illustration 19: Magnetometer survey  
(with interpretation)



95.4m



	magnetic anomalies (archaeological ?)
	strong magnetic disturbances (mainly airfield debris)
	background magnetic activity (natural or recent ?)
	cultivation ?
	strong (ferrous) magnetic anomalies
	former ditches or boundaries (probably relating to airfield)
	pipe (and associated magnetic disturbance)
	land drains ?

Airfield (disused)

60 nT









T3

WOOLFOX LODGE SOLAR AND WIND DEVELOPMENT  
 STRETTON, RUTLAND  
 Archaeological Geophysical Survey 2014  
 Illustration 20: Magnetometer survey (with interpretation)

# T1



60 nT









-  magnetic anomalies (archaeological ?)
-  strong magnetic disturbances  
(mainly airfield debris)
-  background magnetic activity  
(natural or recent ?)
-  cultivation ?
-  strong (ferrous) magnetic anomalies
-  former ditches or boundaries  
(probably relating to airfield)
-  pipe (and associated magnetic disturbance)
-  land drains ?

WOOLFOX LODGE SOLAR AND  
WIND DEVELOPMENT  
STRETTON, RUTLAND  
Archaeological Geophysical Survey 2014  
Illustration 21: Magnetometer survey  
(with interpretation)

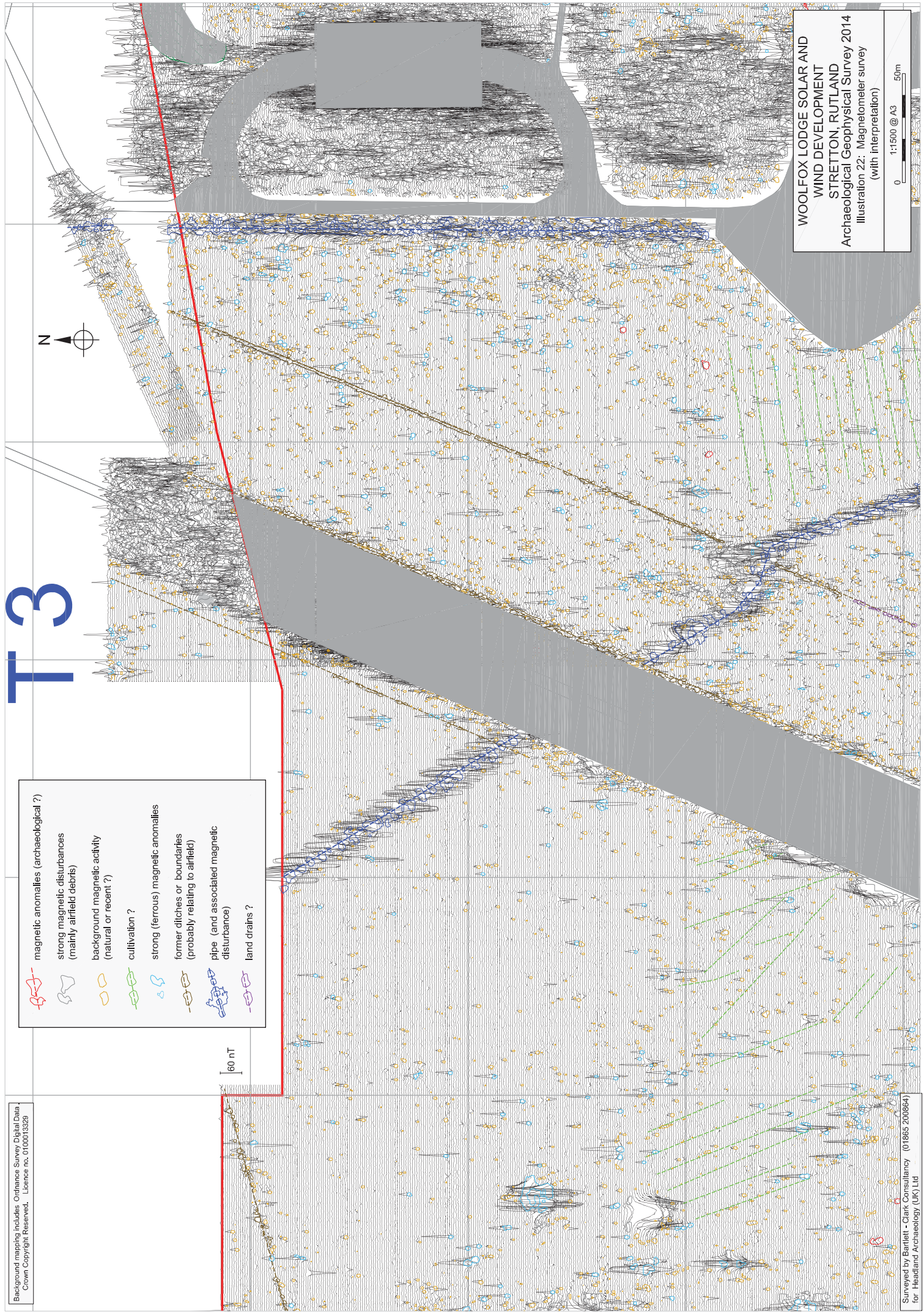
0 1:1500 @ A3 50m

# T3

Background mapping includes Ordnance Survey Digital Data  
 Crown Copyright Reserved. Licence no. 0100015328

-  magnetic anomalies (archaeological ?)
-  strong magnetic disturbances (mainly airfield debris)
-  background magnetic activity (natural or recent ?)
-  cultivation ?
-  strong (ferrous) magnetic anomalies
-  former ditches or boundaries (probably relating to airfield)
-  pipe (and associated magnetic disturbance)
-  land drains ?

60 nT



WOOLFOX LODGE SOLAR AND  
 WIND DEVELOPMENT  
 STRETTON, RUTLAND  
 Archaeological Geophysical Survey 2014  
 Illustration 22: Magnetometer survey  
 (with interpretation)

0 1:1500 @ A3 50m

Surveyed by Bartlett - Clark Consultancy (01865 200864)  
 for Headland Archaeology (UK) Ltd



60 nT

	magnetic anomalies (archaeological ?)
	strong magnetic disturbances (mainly airfield debris)
	background magnetic activity (natural or recent ?)
	cultivation ?
	strong (ferrous) magnetic anomalies
	former ditches or boundaries (probably relating to airfield)
	pipe (and associated magnetic disturbance)
	land drains ?

The Col

Pond

WOOLFOX LODGE SOLAR AND  
WIND DEVELOPMENT  
STRETTON, RUTLAND  
Archaeological Geophysical Survey 2014  
Illustration 23: Magnetometer survey  
(with interpretation)



Background mapping includes Ordnance Survey Digital Data  
Crown Copyright Reserved. Licence no. 0100013328



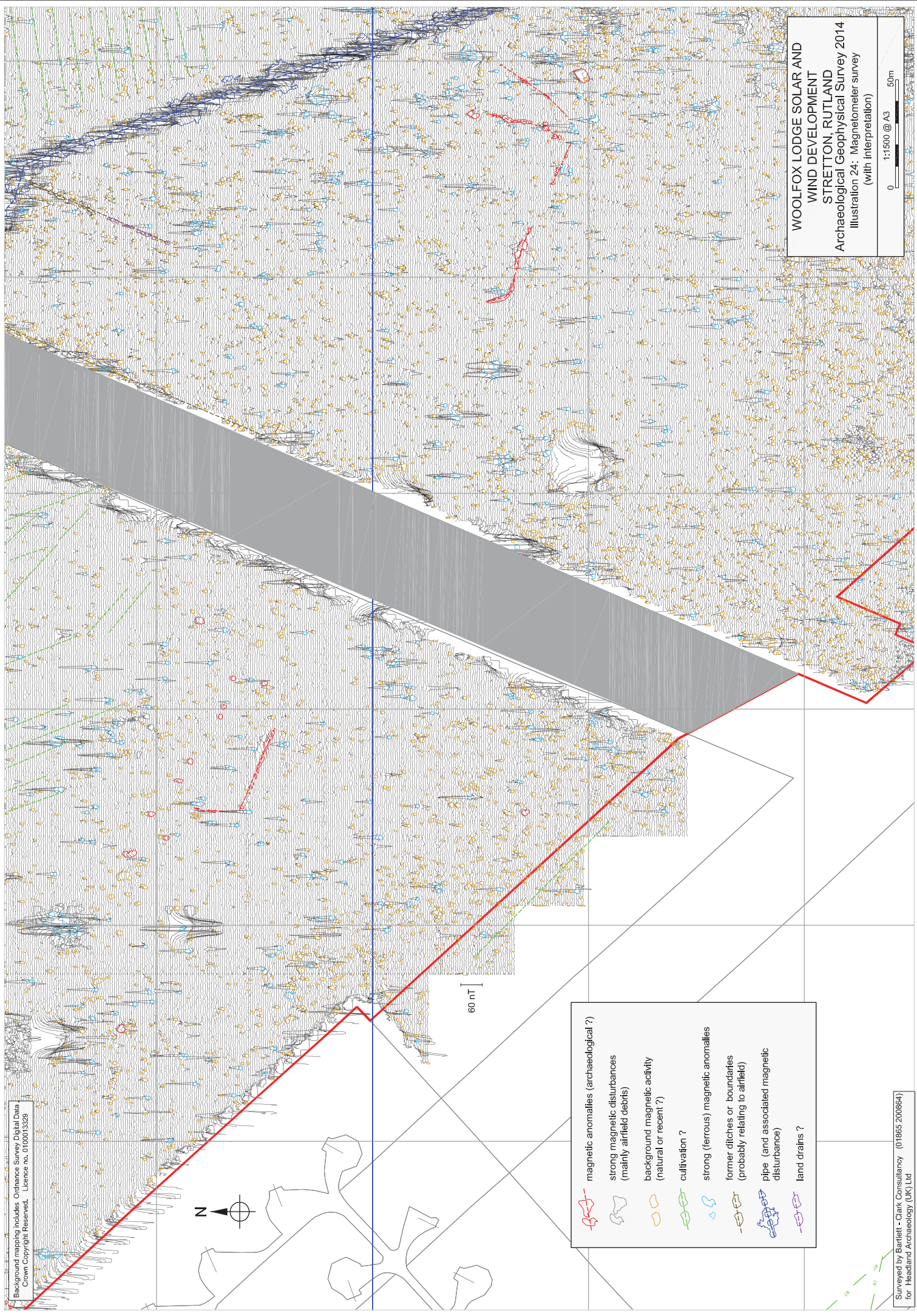
60 nT

	magnetic anomalies (archaeological ?)
	strong magnetic disturbances (mainly airfield debris)
	background magnetic activity (natural or recent ?)
	cultivation ?
	strong (ferrous) magnetic anomalies
	former ditches or boundaries (probably relating to airfield)
	pipe (and associated magnetic disturbance)
	land drains ?

WOOLFOX LODGE SOLAR AND  
WIND DEVELOPMENT  
STRETTON, RUTLAND  
Archaeological Geophysical Survey 2014  
Illustration 24: Magnetometer survey  
(with interpretation)

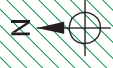
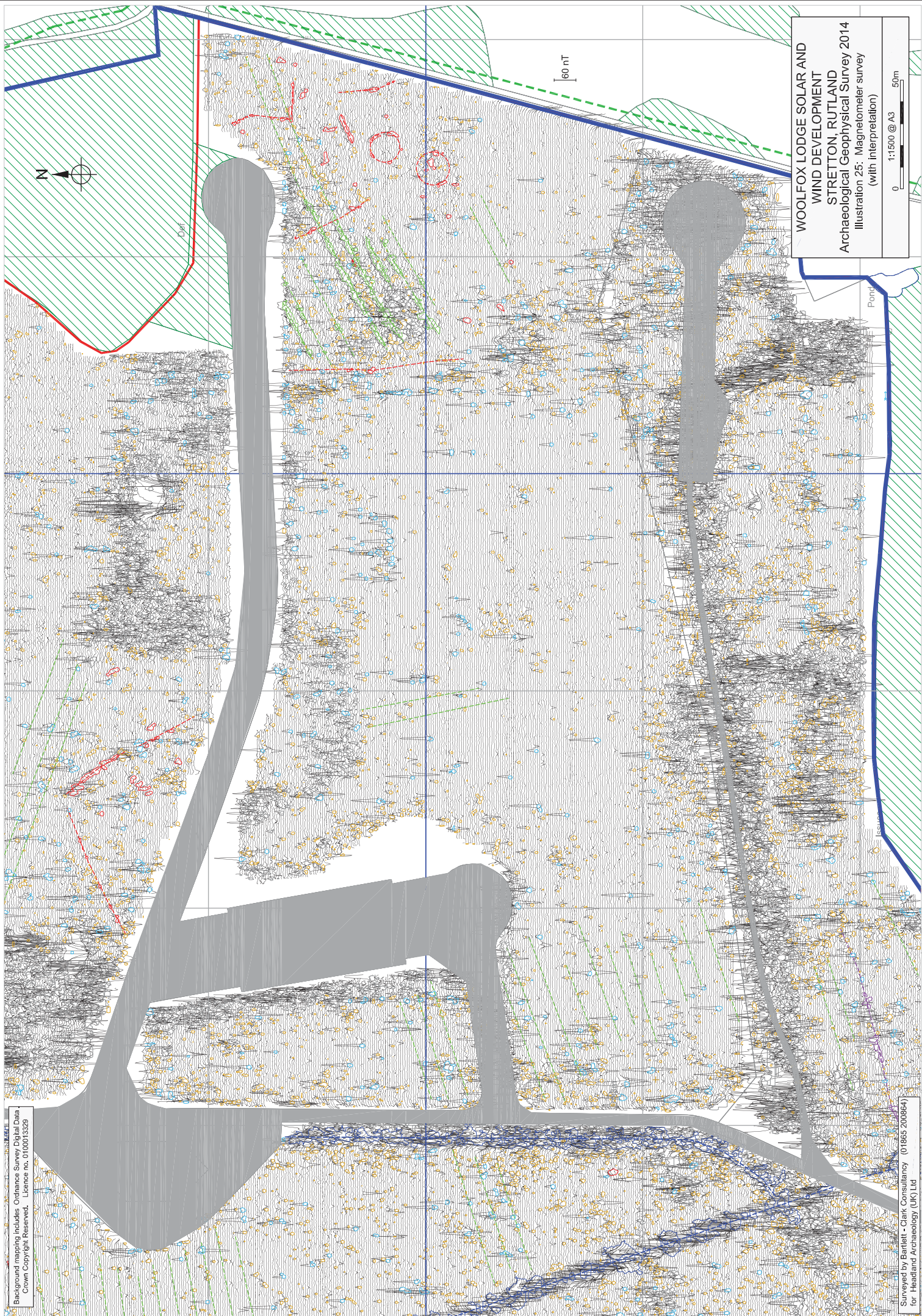


Surveyed by Bartlett - Clark Consultancy (01865 200864)  
for Headland Archaeology (UK) Ltd





Background mapping includes Ordnance Survey Digital Data  
Crown Copyright Reserved. Licence no. 0100015328



Def

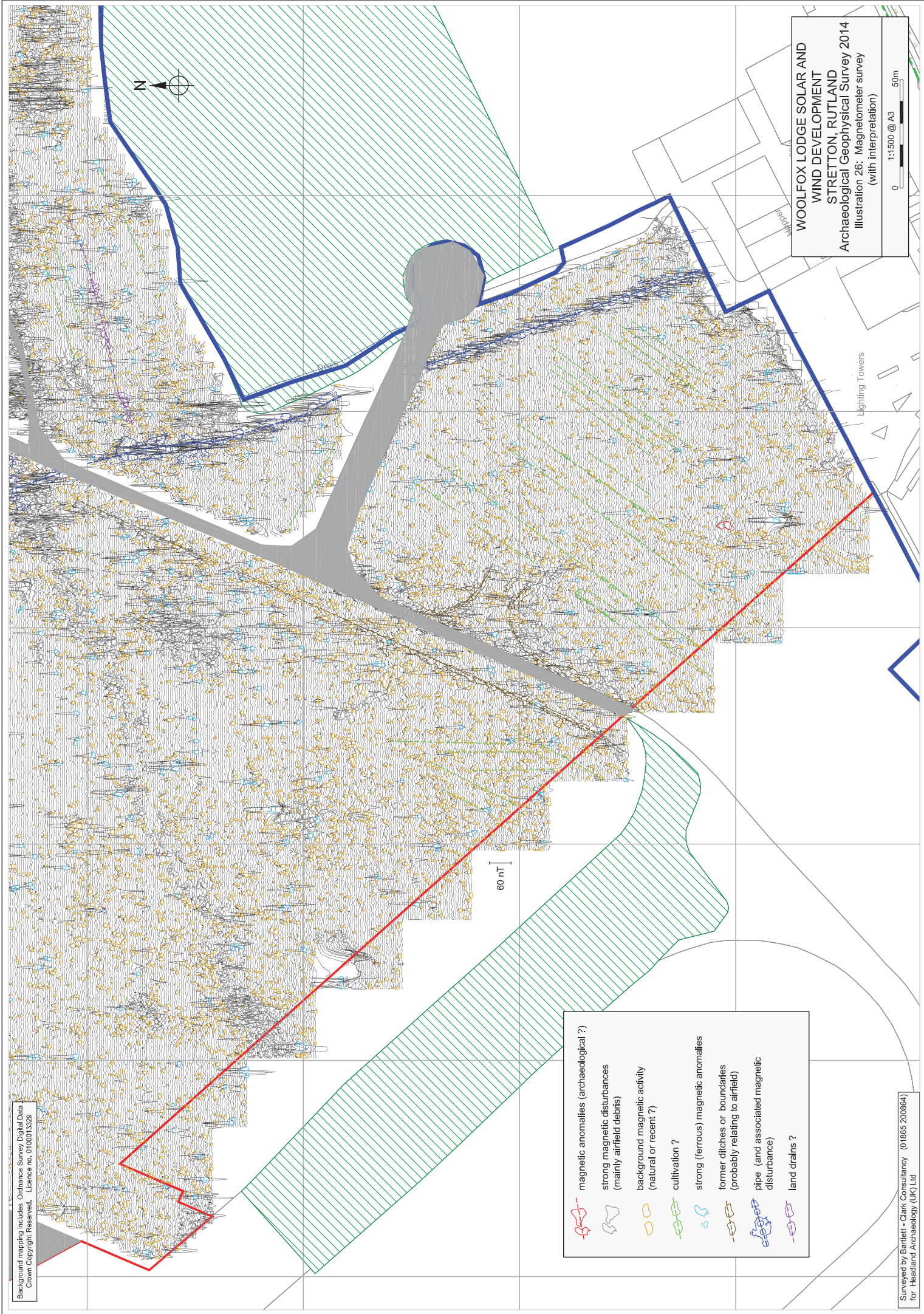
60 nT

Pond

WOOLFOX LODGE SOLAR AND  
WIND DEVELOPMENT  
STRETTON, RUTLAND  
Archaeological Geophysical Survey 2014  
Illustration 25: Magnetometer survey  
(with interpretation)









0 1:1500 @ A3 50m

Surveyed by Bartlett - Clark Consultancy (01865 200864)  
for Headland Archaeology (UK) Ltd



WOOLFOX LODGE SOLAR AND  
 WIND DEVELOPMENT  
 STRETTON, RUTLAND  
 Archaeological Geophysical Survey 2014  
 Illustration 26: Magnetometer survey  
 (with interpretation)

0 1:1500 @ A3 50m

-  magnetic anomalies (archaeological ?)
-  strong magnetic disturbances (mainly airfield debris)
-  background magnetic activity (natural or recent ?)
-  cultivation ?
-  strong (ferrous) magnetic anomalies
-  former ditches or boundaries (probably relating to airfield)
-  pipe (and associated magnetic disturbance)
-  land drains ?





© 2014 by Headland Archaeology (UK) Ltd

**NORTH**

Headland Archaeology  
13 Jane Street  
Edinburgh EH6 5HE

**T** 0131 467 7705  
**E** north@headlandarchaeology.com

**SOUTH & EAST**

Headland Archaeology  
Building 68C, Wrest Park, Silsoe  
Bedfordshire MK45 4HS

**T** 01525 861 578  
**E** southandeast@headlandarchaeology.com

**MIDLANDS & WEST**

Headland Archaeology  
Unit 1, Premier Business Park, Faraday Road  
Hereford HR4 9NZ

**T** 01432 364 901  
**E** midlandsandwest@headlandarchaeology.com

[www.headlandarchaeology.com](http://www.headlandarchaeology.com)