



THE CALEDONIA WORKS, 41 MOWBRAY STREET, SHEFFIELD, SOUTH YORKSHIRE

Historic Building Recording





**THE CALEDONIA WORKS,
41 MOWBRAY STREET,
SHEFFIELD,
SOUTH YORKSHIRE**

Historic Building Recording

Planning Application Ref: 06/01636/FUL

Prepared for:
CgMs Ltd
Newark Beacon
Beacon Hill Office Park,
Cafferata Way,
Newark
NG24 2TN

by
Wessex Archaeology
Sheffield Office
Unit R6
Riverside Block
Sheaf Bank Business Park
Sheffield S2 3EN

Report reference:

84630.01_BDG_V0_2

April 2012

DISCLAIMER

THE MATERIAL CONTAINED IN THIS REPORT WAS DESIGNED AS AN INTEGRAL PART OF A REPORT TO AN INDIVIDUAL CLIENT AND WAS PREPARED SOLELY FOR THE BENEFIT OF THAT CLIENT. THE MATERIAL CONTAINED IN THIS REPORT DOES NOT NECESSARILY STAND ON ITS OWN AND IS NOT INTENDED TO NOR SHOULD IT BE RELIED UPON BY ANY THIRD PARTY. TO THE FULLEST EXTENT PERMITTED BY LAW WESSEX ARCHAEOLOGY WILL NOT BE LIABLE BY REASON OF BREACH OF CONTRACT NEGLIGENCE OR OTHERWISE FOR ANY LOSS OR DAMAGE (WHETHER DIRECT INDIRECT OR CONSEQUENTIAL) OCCASIONED TO ANY PERSON ACTING OR OMITTING TO ACT OR REFRAINING FROM ACTING IN RELIANCE UPON THE MATERIAL CONTAINED IN THIS REPORT ARISING FROM OR CONNECTED WITH ANY ERROR OR OMISSION IN THE MATERIAL CONTAINED IN THE REPORT. LOSS OR DAMAGE AS REFERRED TO ABOVE SHALL BE DEEMED TO INCLUDE, BUT IS NOT LIMITED TO, ANY LOSS OF PROFITS OR ANTICIPATED PROFITS DAMAGE TO REPUTATION OR GOODWILL LOSS OF BUSINESS OR ANTICIPATED BUSINESS DAMAGES COSTS EXPENSES INCURRED OR PAYABLE TO ANY THIRD PARTY (IN ALL CASES WHETHER DIRECT INDIRECT OR CONSEQUENTIAL) OR ANY OTHER DIRECT INDIRECT OR CONSEQUENTIAL LOSS OR DAMAGE

QUALITY ASSURANCE

SITE CODE	84630	ACCESSION CODE	-	CLIENT CODE	-
PLANNING APPLICATION REF.	06/01636/FUL	NGR	435266 388261		

VERSION	STATUS*	PREPARED BY	APPROVED BY	APPROVER'S SIGNATURE	DATE	FILE
0.1	F	LUCY DAWSON	RO'N	RICHARD O'NEILL	02.04.12	84630.01_BDG_V0_1
0.2	F	LUCY DAWSON	RO'N	RICHARD O'NEILL	09.05.12	84630.01_BDG_V0_2

I= INTERNAL DRAFT E= EXTERNAL DRAFT F= FINAL

**THE CALEDONIA WORKS,
41 MOWBRAY STREET,
SHEFFIELD,
SOUTH YORKSHIRE**

Historic Building Recording

Contents

Summary.....	vii
Acknowledgements.....	viii
1 INTRODUCTION.....	1
1.1 Project Background.....	1
1.2 The Site: location and geology.....	1
2 AIMS AND OBJECTIVES.....	2
2.1 General.....	2
2.2 Documentary Research.....	2
2.3 Building Recording.....	2
3 METHODOLOGY.....	2
3.1 Documentary research.....	2
3.2 Building Recording.....	2
4 HISTORICAL BACKGROUND.....	4
4.1 Introduction.....	4
4.2 The Caledonia Works.....	4
5 BUILDING DESCRIPTION.....	6
5.1 Introduction.....	6
5.2 The Northeast Range.....	6
5.3 The Southeast Range.....	9
5.4 The Southwest Range.....	10
5.5 The Northwest Range.....	12
6 CONCLUSIONS.....	13
6.1 Discussion.....	13
7 REFERANCES.....	16
7.1 Consulted Sources.....	16
7.2 Online Sources.....	16
7.3 Consulted Cartographic Sources.....	16
8 APPENDIX I – PHOTOGRAPHIC REGISTERS.....	18
9 APPENDIX II – MEDIUM FORMAT CONTACT SHEETS.....	28
10 APPENDIX III – INDEX TO ARCHIVE.....	35

LIST OF FIGURES AND PLATES

- Front cover** *Northeast elevation of The Caledonia Works, Mowbray Street*
- Back cover** *Southwest elevation of The Caledonia Works, fronting the River Don*
- Figure 1** *Site Location*
- Figure 2** *Historic Map – Ralph Gosling 1736 & Fairbank Town Map 1771*
- Figure 3** *Historic Map – Thomas Jeffery's Map of Yorkshire 1771 & 1851 OS Map*
- Figure 4** *Historic Map – White 1863 & 1890 Town Plan*
- Figure 5** *Historic Map – 1895 OS & 1935 OS*
- Figure 6** *Site Plan*
- Figure 7** *Elevation 1 – Northeast elevation of the Northeast Range*
- Figure 8** *Elevation 2 – Southwest elevation of the Northeast Range*
- Figure 9** *Elevation 3 – Northwest elevation of the Southeast Range*
- Figure 10** *Elevation 4 – Northeast elevation of the Southwest Range*
- Figure 11** *Elevation 5 – Southeast elevation of the Northwest Range*
- Figure 12** *Phased ground floor plan*
- Figure 13** *Phased first floor plan*
- Figure 14** *External photo viewpoint plan*
- Figure 15** *External and ground floor photo viewpoint plan*
- Figure 16** *First floor photo viewpoint plan*
-
- Plate 1** *General view of Caledonia Works from Mowbray Street (Film D.10)*
- Plate 2** *General view of the principal facade of the Caledonia Works, fronting Mowbray Street (Film D.04)*
- Plate 3** *View of the southeast end of the northeast elevation of the Northeast Range, fronting Mowbray Street (Film D.05)*
- Plate 4** *General view of the southwest facing elevation of the Northeast Range, overlooking the central courtyard (Film D.12)*
- Plate 5** *Detail view of the cart passage, southwest elevation of the Northeast Range (Film D.13)*
- Plate 6** *General view of southwest elevation of the Northeast Range (Film D.14)*
- Plate 7** *General view of G3 (Film D.15)*
- Plate 8** *General view of G3, looking towards staircase G8 (Film D.16)*
- Plate 9** *General view of G2a, showing former corridor & W.C partition locations (Film D.17)*
- Plate 10** *General view of G2, showing blocked fireplace (Film D.19)*
- Plate 11** *General view of G1, showing former opening within the southwest wall (Film D.18)*
- Plate 12** *General view of G4 (Film D.20)*
- Plate 13** *General view looking into G4 from G5 (Film D.21)*
- Plate 14** *General view of G5 from G12 (Film D.22)*
- Plate 15** *General view of F1 (Film D.23)*
- Plate 16** *General view of F1, showing blocked opening & skylight (Film D.24)*
- Plate 17** *General view of F2, showing joggled King-Post roof trusses (Film D.26)*
- Plate 18** *General view of F3 (Film D.27)*

- Plate 19** *General view of F4, showing flue & stairs to F5 (Film D.29)*
- Plate 20** *General view of F5, showing fireplaces (Film D.30)*
- Plate 21** *General view of F5, showing fireplace, and F6 beyond (Film D.31)*
- Plate 22** *General view of the northwest elevation of the Southeast Range, from the cart passage (Film D.32)*
- Plate 23** *General view of the northwest elevation of G19 (Film D.33)*
- Plate 24** *General view of the northwest elevation of the Southeast Range, showing loading door, and two large truncated timber beams (Film D.34)*
- Plate 25** *General view of the northwest elevation at the southwest end of the Southeast Range (Film D.37)*
- Plate 26** *General view of G12 (Film D.38)*
- Plate 27** *General view of G12, showing the southwest wall (Film D.44)*
- Plate 28** *General view of the southeast wall of G12, showing blocked doorway (Film D.41)*
- Plate 29** *General view the south corner of G12 during demolition, showing the change in fabric from stone to brick after the removal of the travelling crane (Film D.112)*
- Plate 30** *Detail of the southeast wall of the Southeast Range, during demolition, showing the phase 1 stone wall of the Caledonia Works, and the later brick wall of the former adjacent works (Film D.116)*
- Plate 31** *General view the northeast corner of the Southeast Range, showing the relationship with the Northeast Range (Film D.124)*
- Plate 32** *Detail of the northwest wall of the Southeast Range, showing a flue, plus two truncated chimneys in the southwest gable of the Northeast Range (Film D.123)*
- Plate 33** *General view of G13 (Film D.45)*
- Plate 34** *General view of modern mezzanine above G13 (Film D.47)*
- Plate 35** *General view of F16 (Film D.50)*
- Plate 36** *General view of F16 (Film D.51)*
- Plate 37** *General view of the northeast elevation of the Southwest Range (Film D.53)*
- Plate 38** *General view of the southwest elevation of the Southwest Range (Film D.61)*
- Plate 39** *View of the southeast corner of the Southwest Range, showing doorway and possible blocked wall box in the southeast elevation - formerly Times Steel Works (Film D.62)*
- Plate 40** *General view of G14 (Film D.66)*
- Plate 41** *General view of G14 (Film D.67)*
- Plate 42** *General view of G15 (Film D.68)*
- Plate 43** *General view of G15, showing possible high blocked wall box within the southeast wall (Film D.69)*
- Plate 44** *General view of modern corridor inserted into G16, with doorway leading to the former adjacent site (Film D.71)*
- Plate 45** *General view of inserted modern room with G16 (Film D.74)*

- Plate 46** *General view of modern inserted room within G16 (Film D.75)*
- Plate 47** *General view up staircase G17 (Film D.77)*
- Plate 48** *General view of staircase F15 & roof void F14 (Film D.78)*
- Plate 49** *General view of F11 (Film D.81)*
- Plate 50** *General view of F11 (Film D.82)*
- Plate 51** *General view of F11a, showing blocked windows within the southeast wall (Film D.83)*
- Plate 52** *General view of F12 (Film D.79)*
- Plate 53** *General view of F12 (Film D.80)*
- Plate 54** *General view of the southeast elevation of the Northwest Range (Film D.88)*
- Plate 55** *View of the southwest end of the southeast elevation of the Northwest Range, showing blocked arched openings and cast iron vents (Film D.84)*
- Plate 56** *General view of the northeast end of the southeast elevation of the Northwest Range, showing the join with the Northeast Range (Film D.89)*
- Plate 57** *General view the southeast elevation of the Northwest Range - northeast end (Film D.91)*
- Plate 58** *General view of the southeast elevation of the Northwest Range - northeast end, showing G9 (Film D.92)*
- Plate 59** *General view of G18 (Film D.93)*
- Plate 60** *General view of G18 (Film D.94)*
- Plate 61** *General view of G11 (Film D.97)*
- Plate 62** *General view of G11 (Film D.98)*
- Plate 63** *General view along corridor G10 (Film D.100)*
- Plate 64** *General view of external staircase G7 (Film D.99)*
- Plate 65** *General view of G6 (Film D.101)*
- Plate 66** *General view of entrance to F7 from external staircase (Film D.102)*
- Plate 67** *General view of F7 (Film D.104)*
- Plate 68** *General view of entrance to F10 from external staircase (Film D.103)*
- Plate 69** *General view of F10 (Film D.105)*
- Plate 70** *General view of F9 (Film D.107)*

**THE CALEDONIA WORKS,
41 MOWBRAY STREET,
SHEFFIELD,
SOUTH YORKSHIRE**

Historic Building Recording

Summary

Wessex Archaeology was commissioned by CgMs to undertake the final reporting for historic building recording at The Caledonia Works, 41 Mowbray Street, Sheffield, South Yorkshire centred on National Grid Reference (NGR) 435266 388261. Planning permission for the redevelopment of the site, including demolition of some standing structures, had been granted by Sheffield City Council (Ref: 06/01636/FUL), subject to conditions which included historic building recording set out in this report.

The Caledonia Works is located within the Neepsend area of Sheffield, on the northern bank of the River Don. It is bounded by Mowbray Street to the northeast, the former Eagle Works to the northwest, and the former Times Steel Works (now Brewery Wharf) to the southeast. The Works comprised four ranges, set around a central courtyard, which had formerly made up an iron foundry complex dating to the 19th century. The Site does not include any designated features such as Scheduled Ancient Monuments or Listed Buildings however, the Site is located within the Kelham Island Conservation Area.

A Level 2 survey was carried out at the Site which identified multiple phases of building and alteration following its initial construction in the mid- to late 19th century. It would appear that since the Site's industrial expansion in the 19th century, the complex had remained largely unaltered in layout until the mid-20th century, when occupied by William Turner & Son Ltd.

The Site's layout and architectural style was typical of a 19th-century industrial works within Sheffield: four ranges set around a central courtyard with offices located within the principal range, whilst the loud, heavy industrial work was carried out within the ranges to the rear of the site.

Following on from this report, the historic building recording archive produced is currently held in the Wessex Archaeology Sheffield Office and will be deposited along with a copy of this report with Sheffield Archives.

**THE CALEDONIA WORKS,
41 MOWBRAY STREET,
SHEFFIELD,
SOUTH YORKSHIRE**

Historic Building Recording

Acknowledgements

Wessex Archaeology would like to thank: CgMs Ltd for commissioning the project; Simon Mortimer of CgMs for providing the archives and data; and Dinah Saich, of South Yorkshire Archaeology Service for her help and advice.

Richard O'Neill managed the project for Wessex Archaeology. Archive research, archaeological building survey and photography were undertaken by Matt Gadsby, formerly of CgMs. Analysis and report compilation was by Lucy Dawson with illustrations prepared by Chris Breeden.

**THE CALEDONIA WORKS,
41 MOWBRAY STREET,
SHEFFIELD,
SOUTH YORKSHIRE**

Historic Building Recording

1 INTRODUCTION

1.1 Project Background

1.1.1 Wessex Archaeology was commissioned by CgMs Ltd to carry out final reporting on a programme of building recording at the Caledonia Works, 41 Mowbray Street, Sheffield, South Yorkshire, centred on NGR 435266 388261 (**Figure 1**) (hereafter the Site). The work was required as a condition of a planning permission granted by Sheffield City Council (Ref: (06/01636/FUL).

1.1.2 The historic structures forming the complex are first depicted on the 1890 OS map, marked as the Union Foundry (Iron). By this time all four ranges are present surrounding a central courtyard. These ranges appear to have been largely retained with some modern additions and alterations.

1.1.3 The buildings are not listed however the Site is set within the Kelham Island Conservation Area. The Site has been redeveloped, with the Northwest and Southeast ranges having been demolished, and new structures built upon the same footprint. The Sites Northeast and Southwest ranges were retained and renovated.

1.1.4 Prior to this redevelopment, a desk-based assessment of the Site was undertaken by JSAC (now CgMs) followed by a Level 2 survey, as defined by English Heritage, 2006, with work carried out in line with the methodology set out in *A Specification for Standing Building Recording: The Caledonia Works, Mowbray Street, Sheffield*, CgMs, 2007, and agreed with South Yorkshire Archaeology Service (SYAS).

1.2 The Site: location and geology

1.2.1 The Site (centred on NGR 435266 388261) is located on the northern bank of the River Don, in the Neepsend area of Sheffield, directly to the north of Kelham Island. It is bounded by Mowbray Street to the northeast, the former Eagle Works to the northwest, and the former Times Steel Works (now Brewery Wharf) to the southeast. Access to the Site is via a cart passage within the Northeast Range, from Mowbray Street (**Figure 1 and 6**).

1.2.2 The underlying geology of the Site is largely comprised of Silkstone Rock – sandstone. Alluvium and several metres of made-ground lay above this geology, on which the Site is located.

2 AIMS AND OBJECTIVES

2.1 General

- To enhance understanding of the development of the Site and its associated buildings;
- To make an appropriate permanent record of the structures on the Site prior to their renovation or demolition.

2.2 Documentary Research

- To identify any relevant appropriate documentary material, maps, or photographs to enable a greater understanding of the former activities undertaken on the site, which will aid the interpretation the results of any archaeological fieldwork.

2.3 Building Recording

- to identify and objectively record by means of photographs and annotated measured drawings any significant evidence for the original and subsequent historical form and functions of the buildings;
- to analyse and interpret the buildings as an integrated system intended to perform a specialised function;
- to relate the standing structures with the documentary material to create a homogenous understanding of past usage on the site.

2.3.1 The objective of the building recording is to make a permanent, ordered and cross referenced project archive of the Site and to place this record in the public domain by depositing it with Sheffield Archives.

3 METHODOLOGY

3.1 Documentary research

3.1.1 A search of relevant primary and secondary sources was previously carried out by CgMs at Sheffield Archives and included a digital online search to check for any other possible archives.

3.1.2 A full map regression exercise was carried out.

3.1.3 A list of relevant maps and plans consulted in this report is provided in the **References** section below.

3.2 Building Recording

3.2.1 The on-site methodology comprised surveyed and annotated measured floor plans and elevations, record photography, site notes and phased analysis of the Site.

Measured Survey/Drawn Record

3.2.2 The Site was subject to a Level 2 survey and included measured survey producing floor plans and elevations of the structures. The buildings were

surveyed in accordance with the guidelines issued by English Heritage (2006).

3.2.3 The floor plans were produced to a scale of 1:100 and were annotated with archaeological information. Elevations were produced at a scale of 1:50.

3.2.4 The drawings produced were:

- ground floor plan at 1:100;
- first floor plan at 1:100;
- elevation 1 at 1:50;
- elevation 2 at 1:50;
- elevation 3 at 1:50;
- elevation 4 at 1:50;
- elevation 5 at 1:50

Photography

3.2.5 The photographic record comprised both high resolution digital coverage and traditional film techniques using 35mm film. Black and white and colour medium format photography was used in addition for external elevations and a selection of internal areas. A graduated photographic scale was used wherever possible. In addition, 35mm colour slide was used to supplement the general photographic record.

3.2.6 An external photographic record was made of each elevation from vantage points as nearly parallel to the elevation as is possible. A general external photographic record was also made which includes a number of oblique general views of the buildings showing them and the complex as a whole in their setting. General photographs of the interior of the building were also taken. This comprised general views of each type of room. In addition, detailed record shots were made of individual elements of significance.

3.2.7 The location and direction of each photographic viewpoint was recorded onto the corresponding floor plan. Copies of the photographic record and the viewpoint plans and photographic registers can be found in **Plates 1-70**, **Figures 14 - 16** and **Appendix I** respectively. Copies of the medium format contact sheets can be found in **Appendix II**.

Limitations

3.2.8 Despite the photography described above being undertaken by CgMs, unfortunately due to several changes within the company, the original negatives, prints and digital files of the photographic record are missing. Therefore, this report contains only digital photographs accessed from within an original CgMs report, detail black and white 35mm photographs of the

courtyard elevation features, and scans of the medium format contact sheets.

- 3.2.9 Furthermore, a small number of areas within the complex had restricted or limited access, due to health and safety risks. Some areas of the site were in a derelict state with dangerous flooring, which prevented safe access. Any area deemed unsafe to enter was visually inspected and recorded from a safe location.

4 HISTORICAL BACKGROUND

4.1 Introduction

- 4.1.1 The historical background of the Site has been considered in detail in a previous desk-based assessment (JSAC 2006). The development of the site is summarised below.

4.2 The Caledonia Works

- 4.2.1 Prior to the industrial revolution, the Site was located in open fields/land, bounding the River Don. The earliest mapping for Sheffield, dated to 1637 reconstructed by Scurfield, indicates the Site was unoccupied during the mid-17th century. Ralph Gosling's 1736 plan of Sheffield is the first detailed map of the area (**Figure 2**). It shows Bridgehouse, Kelham Island, Kelham Wheel, and Harvest Lane. Development at this time is clustered around Bridgehouse, whilst Mowbray Street is yet to be laid out. The Site remains undeveloped on the 1771 Fairbank Town Map (**Figure 2**), although Thomas Jeffery's 1771 map of Yorkshire, depicts development on land to the west of Bridgehouse (**Figure 3**).
- 4.2.2 Although development to the east and north of the Site was progressing, W & J Fairbank's 1803 Town Plan shows the Site as undeveloped. This remains the case until the 1851 OS map (**Figure 3**) which shows the Site as undeveloped, but with a set boundary surrounding the area. The site to the west has been developed with a large refinery depicted. Mowbray Street, is still not developed by this date however. The Site is shown as empty with a possible wall line surrounding the area, and access from the northern corner off Harvest Lane and a larger entrance at the southeast corner. It is not clear what the site's function was at this time.
- 4.2.3 It would appear that Mowbray Street was constructed between 1851 and 1854. This is indicated by a date stone at the Mowbray Steel Works to the west of the site reading 1854, along with documentary evidence in the form of White's Directory listing Mowbray Street by 1856.
- 4.2.4 By 1862, White's Directory clearly shows that Mowbray Street has increased in particularly industrial development. However, it can not be identified who was occupying the Site at this time, whilst the 1863 White map depicts the site as still unoccupied (**Figure 4**).
- 4.2.5 The Sheffield Flood of 1864 caused major damage to the properties in and around Mowbray Street. Former archaeological excavations conducted by

ARCUS at 23-39 Mowbray Street (former Times Steel Works) identified that the ground between the riverside retaining wall and Mowbray Street comprised of approximately 4.2m of late 19th-century made ground, overlying the natural deposits. It was concluded that the retaining wall along the river was rebuilt following the Sheffield Flood, which in turn makes the recorded standing structures on the site, also date to post 1864 (Baker & Chan 2006).

- 4.2.6 The Site is first depicted on the 1890 Town Plan (**Figure 4**) and is labelled as the 'Union Foundry (Iron)'. This shows all four main ranges surrounding a central courtyard, with access via a cart passage within the north-eastern range, off Mowbray Street. Ancillary buildings and external staircases are depicted attached to each of the ranges, whilst running southwest-northeast across the courtyard is what appears to be a travelling crane, exiting from the Southeast Range. The southern corner of the Southeast Range is depicted as open fronted, within which is a square chimney. The chimney is likely to be that recorded by ARCUS, within the former internal elevation of the adjacent Times Steel Works, and possibly utilised by both works.
- 4.2.7 By the 1895 OS map, the travelling crane within the courtyard is no longer depicted (**Figure 5**), however the remainder of the structures appear unaltered until the 1935 OS map (**Figure 5**), when an extension and infill to the Northwest Range appears. This is also the first time that the Site is depicted as the 'Caledonia Works (Foundry)' rather than the Union Foundry. By 1953 it was shown as the 'Caledonia Works (Steel, Files, Tools)'.
- 4.2.8 It is not known precisely who occupied the Caledonia Works/'Union Foundry' in the late 19th century. However, two names appear to have been synonymous with the occupation of both the Caledonia Works and the adjacent Times Steel Works: Oxley Brothers Ltd. and William Turner & Sons Ltd.
- 4.2.9 The Oxley Brothers, listed as both iron founders and later engineers, are recorded in title deeds as being located at Mowbray Street from at least 1876, and it is possible that the firm constructed and occupied both sites from at least this date. Crucible furnaces were located within the Times Steel Works (Baker & Chan, 2006), with the metal working industries being located in the adjacent Union Foundry/Caledonia Works. However, it may have been the case that the Union Foundry/Caledonia Works was not occupied by a single tenant, and may have had multiple occupancy.
- 4.2.10 In 1905 William Turner & Sons are listed in title deeds as occupying both the Times Steel Works and the Union Foundry/Caledonia Works sites and recorded as both steel manufacturers and file manufacturers. By 1920, the Oxley Brothers are still listed at the Union Foundry/Caledonia Works as iron founders whilst William Turner & Sons are listed at the Times Steel Works. It may have been that during this time, both sites were occupied by both firms, yet ownership lay with one. The Oxley Brothers are not mentioned after the 1920's.
- 4.2.11 The Site remained occupied by William Turner & Son Ltd, trading as 'Caledonia, Sheffield' until the late 20th century.

- 4.2.12 At the time of the survey, the Site was still occupied by a number of businesses, including a precision grinding firm, engineering firms and a firm of building designers.

5 BUILDING DESCRIPTION

5.1 Introduction

5.1.1 The Site comprised four ranges set around a central courtyard (**Figure 6**). A cart passage within the north-eastern range, fronting Mowbray Street provided access to the Site (**Plate 1**). The Northeast and Southwest ranges were both two-storeys in height, whilst the Northwest and Southeast ranges were both tall, single-storey structures. All were largely brick built, although the earliest retained elements on site had been constructed of sandstone. The majority of the structures were built between 1870 and 1890, which encompassed 8 identified phases of construction. Post 1890, alterations and additions continued, with three phases dating to this period, although the general layout of the Site remained unaltered.

5.1.2 A full measured and photographic survey of the Site was undertaken. The survey drawings produced are included in this report (**Figures 7-16**) along with a selection of the photographic record (**Plates 1-70**).

5.1.3 This programme of archaeological survey and analysis has identified 11 main phases of construction:

- Phases 1-8: Pre 1890;
- Phase 9: 1905 – 1923;
- Phase 10: 1923 – 1935;
- Phase 11: Post 1950.

5.2 The Northeast Range

5.2.1 The Northeast Range of the Caledonia Works presents the principal façade for the works, fronting Mowbray Street, with a central cart passage providing vehicular access to the central courtyard of the works. The range was set in a northwest to southeast alignment along Mowbray Street, and comprised at least four separate phases of construction. The 1890 town plan (**Figure 4**) depicts the range in its final form.

External

5.2.2 The northeast elevation of the range fronts Mowbray Street and was constructed over four phases (**Figures 7 and 12 and Plate 2**). There was a clear break in the range, with a long two-storey structure to the northwest, and a later much taller two-storey building attached at its southeast end.

5.2.3 The northwest structure was two-storeys in height, constructed from hand-made red bricks, laid in an irregular bond, with cart passage positioned to

the southeast. This building was architecturally typical in industrial character, constructed in three phases. The elements of the range positioned either side of the cart passage were originally two separate buildings of two phases. These were then joined together with the addition of a continuation of the first floor between the two buildings, creating the cart passage at ground floor below.

- 5.2.4 The building to the northwest of the cart passage contained six bays of fenestration which were equally spaced at both ground and first floor, each window having segmental brick flat arched heads and stone sills. At ground floor, one window was wider and contained a much more elaborate segmental brick arched head, possibly due to it serving a higher status office internally. Furthermore, the ground floor window, directly adjacent to the cart passage, was originally a doorway.
- 5.2.5 The building positioned to the southeast of the cart passage contained only two bays each with wider windows than those to the northwest of the cart passage. These also contained segmental brick arched heads and stone sills.
- 5.2.6 The cart passage and first floor over were clearly added joining the two buildings at a later phase, indicated by irregular brickwork surrounding inserted pad stones and lintel of the cart passage in the northeast elevation. Three windows at first floor within the elevation also varied in style from those within each flanking buildings.
- 5.2.7 The southeast end of the range comprising a tall, two-storey structure, was attached to the southeast end of the earlier section of the range as described above (**Plate 3**). The northeast elevation contained four bays at ground and first floor with windows having timber frames and casements, chamfered stone sills at ground floor, and a stone string lintel dividing the two floors within the elevation. At first floor the windows had simple stone lintels and sills and timber sashes. The building had been constructed using red brick laid in a Flemish bond, a bond commonly used to represent a higher status building or frontage. Two chimney stacks were clearly visible rising from the slate covered pitched roof. Attached at the south-eastern extent of the elevation were the gable and elevation remnants of the former adjacent Times Steel Works.
- 5.2.8 Overlooking the central courtyard was the southwest elevation of the range (**Figure 8 and Plate 4**). Both the northwest and southeast ends of the elevation were obscured by the attached ranges, leaving only a third of the elevation including the cart passage visible. This section of the elevation contained the cart passage, with brick relieving arch over, and three first floor windows. A break in the elevation indicating two phases of construction is delineated by a projecting brick pier at the southeast side of the cart passage, irregular brickwork at the junction of the southwest end of the relieving arch with the adjacent brickwork, and a difference in eaves height and roof pitch (**Plates 4-6**). To the southeast of the cart passage the elevation comprised a pedestrian doorway and an attached single-storey structure with lean-to roof at ground floor. At first floor was an original window, an inserted doorway with steel fire escape ladder, and a small

window within an original window opening which had been altered to a doorway and subsequently largely blocked with brick (**Plate 6**).

Internal

- 5.2.9 Internally the range at ground floor was divided by the four separate phases of construction (**Figure 12**). The phase 2, northwest end of the range contained three rooms (G1 – G3), which had had later partitions inserted, sub-dividing the rooms. Room G3 (**Plates 7 and 8**) originally was accessed by the former doorway (altered to a window) directly from Mowbray Street and contained a window overlooking the cart passage. At the time of survey, rooms G1-G3 were accessed from a doorway in the southwest wall of G3 from the courtyard of the works. Room G2 (**Plate 10**) contained a blocked fireplace, and a wider window within the northeast wall which is suggestive of a higher status office. Room G1 (**Plate 11**) appeared to have had a blocked opening within its southwest wall which would have originally connected to room G6 within the northwest range. Rooms G1-G2 most likely originally functioned as the works offices, whilst G3 may have acted as the works time office.
- 5.2.10 To the southeast of G3 was the inserted phase 4 cart passage, leading from Mowbray Street. Positioned to the southeast of the cart passage was G4 (**Plate 12**). This contained two windows to the northeast fronting Mowbray Street, whilst access was via a single doorway to the southwest, from the courtyard. Within the northwest wall, making up the southeast side of the cart passage, was a large inserted multi-paned bay window with central hatch.
- 5.2.11 Room G5 (**Plate 14**) made up the ground floor of the later, phase 5, addition, attached to the southeast of G4. G5 was open to the adjacent southeast range to the southwest, and contained four windows to the northeast. A steel stanchion and overhead RSJ supported the southwest wall of the building at first floor above.
- 5.2.12 The first floor (**Figure 13**), comprised rooms F1-F6, and was accessed from a phase 9 stairway, leading from G3 on the ground floor. The floor had undergone a soft strip of all modern inserted partitions, leaving only original structural divisions in place. Rooms F1 (**Plates 15 and 16**) and F2 (**Plate 17**) were positioned at the northwest of the range, and represented phase 2. There was a blocked doorway within the southwest wall of F1, which would have originally joined to the adjacent F7 of the northwest range. The northwest wall of F2 contained a blocked fireplace.
- 5.2.13 Room F3 (**Plate 18**) was a single room positioned over the cart passage, whilst the adjacent F4 contained a phase 5 flue in the southeast wall (**Plate 19**). An inserted doorway with fire escape and blocked window were located in the southwest wall. A set of timber stairs were positioned in the southeast corner of the room which provided access to rooms F5 and F6. Room F5 had been stripped leaving a fireplace within the northwest wall, and a chimney breast and fireplace centrally positioned within the room, indicating the space was originally at least two rooms, each with two windows overlooking Mowbray Street and a single window each to the southwest,

overlooking G12 of the southeast range (**Plates 20 and 21**). Room F6 was situated at the eastern corner of F5 and contained a tall window in the northwest wall. This likely served as a w.c. Room F5 would have originally provided high status offices, with heating, windows overlooking the work within G12, and a private w.c within F6.

5.3 The Southeast Range

External

5.3.1 The Southeast Range was attached to the southwest of the Northeast Range, and was oriented in a northeast-southwest alignment. The range was a tall double height single-storey industrial range, constructed during phase 5, using red brick laid in an English bond. It contained only one visible elevation – the northwest facing elevation fronting the central courtyard (**Figure 9 and Plates 22-25**).

5.3.2 Positioned at the east corner of the courtyard, against the Southeast Range, was a phase 11 brick lean-to structure providing w.c facilities. Access was gained via a doorway within the northwest elevation (**Plate 23**). The northwest elevation of the range (**Plate 24**) contained a large central opening, which appeared to have been altered or repaired, a blocked window and an altered pedestrian doorway. Located high in the elevation, one either side of the central opening, were two large truncated timber beams. These were the remnants of the travelling crane depicted on the 1890 town plan (**Figure 4**), extending across the courtyard. At the northeast of the elevation, where it joined with the northeast range, a truncated chimney was visible, along with a truncated flue and window within the northwest elevation of part of the phase 5 northeast range. The southwest end of the elevation was made up of a modern two-storey brick infill, with modern windows and doorways at ground and first floor (**Plate 25**).

Internal

5.3.3 Internally the Southeast Range contained two areas: a single space to the northeast making up room G12 (**Plates 26 and 27**); and a two-storey modern infill to the southwest making up G13 and F16 (**Figures 12 and 13**). Room G12 was open to G5 to the northeast, and was a large open space with modern inserted steel travelling crane (**Plates 26-28**). The southeast and southwest walls were constructed from sandstone and date to phase 1. These phase 1 walls were extended upwards with brick during phase 5, when the northwest wall and southeast end of the northeast range were built. The phase 1 stone walls were likely to have been part of an earlier, smaller building, positioned on the same footprint suggested by the pitched change in stone-to-brick fabric within the southwest gable wall, indicating a possible original roof line (**Plates 27 and 29**). A blocked doorway was positioned within the southeast wall, which indicates the connection between the Caledonia Works and the formerly adjacent Times Steel Works. There was also a blocked door and a blocked window within the southwest wall. The roof was carried on six angle iron roof trusses. The northwest wall of the structure, constructed during phase 5, contained a flue, noted during the watching brief, and is clearly the same construction phase as the southeast end of the Northeast Range (**Plates 31 and 32**).

5.3.4 Located to the southwest of G12 was G13. This area was originally depicted as being open sided to the northwest. However, this had undergone modernisations, creating a modern storage and office space with inserted mezzanine level within G13 (**Plates 33 and 34**). A possible blocking or scar was noted within the earlier southeast wall, although no other historical features were observed.

5.3.5 The first floor, accessed via an external stairway, and door in the northwest elevation, comprised a single space with brick piers within the walls to the northwest and southeast supporting a single angle iron roof truss (**Plates 35 and 36**). At the southwest corner of the room, the original wall had been removed at its lower level, and an RSJ inserted to support the gable above. A wall positioned at an angle had been inserted in order to insert staircase G17/F15, creating internal access between the ground and first floors of the Southwest Range.

5.4 The Southwest Range

External

5.4.1 The Southwest Range was attached to the southwest of the southeast and northwest ranges. The range was aligned northwest to southeast, and bounded the north side of the River Don (**Figures 12 and 13 and Plates 37 and 38**). This range was a tall two-storey structure constructed with a dark red brick, and comprised 19 bays. It was constructed over three phases (phases 6-8). The earliest phase (phase 6) comprised the south-easternmost 6 bays, whilst the central 7 bays were added during phase 7, and the north-westernmost 6 bays were constructed during phase 8.

5.4.2 The northeast elevation of the building overlooking the central courtyard (**Figure 10 and Plate 37**), contained at first floor, six windows with segmental brick arched heads and stone sills, a doorway and adjacent large modern taking-in door with hoist, both accessed via an external staircase.

5.4.3 At ground floor there were two arched windows which had retained a large portion of their original multi-paned metal frames, each with segmental brick arched heads and stone sills, a large modern inserted double doorway and a blocked arched window (obscured by the modern external staircase). The north-western half of the elevation had undergone several phases of alterations, likely associated with a former building positioned against the elevation, as depicted on the 1953 OS map (**Figure 5**). There was a blocked primary doorway, and adjacent blocked primary window, whilst at the north-western extent of the elevation was a blocked tall inserted opening, and a modern window within a former opening with lowered lintel. This opening's south-eastern jamb formed part of a clear vertical join in the brickwork delineating the join between phases 7 and 8 of the building. Positioned between ground and first floor were truncated timber joists, indicating the extent of the former attached building.

5.4.4 The southwest elevation of the building fronts the adjacent River Don (**Plate 38**). The structure was constructed on an earlier stone built river retaining wall. Above this the elevation was brick built, with a slate covered pitched roof. The building was two-storeys in height, with the exception of the south-

easternmost two bays which was single storey with a lean-to slate covered roof.

- 5.4.5 The six south-easternmost bays of the building made up the earliest phase of the structure (phase 6). The ground floor of the phase 6 section contained four windows with retained original metal frames within the fan of the windows, whilst the lower frames had all be replaced. The two bays making up the single-storey southeast end contained a blind and a blocked primary window with inserted modern window. This phase 6 ground floor fenestration had segmental brick arched heads and stone sills forming a string course. At first floor, were four windows each with segmental flat arched heads and stone sills. All had replacement window frames. A vertical join within the brickwork denotes the position of the attached phase 7 section of the building to the northwest. A second vertical join within the elevation also delineates the join between the phase 7 and 8 section of the building. Both phases 7 and 8 of the elevation contain matching fenestration at both ground and first floor to that of the phase 6 section, with the exception of having separate sills rather than a string course sill at ground floor. The first floor of the north-westernmost bays had been truncated and the roof line adapted to be part of the northwest range of the works, probably during phase 10. Within this adapted gable was a doorway with timber door. Positioned between the ground and first floor, along the elevation were regularly spaced brick blockings, representing the inserted travelling crane internally.
- 5.4.6 Part of the southeast elevation of the formerly attached Times Steel Works was also visible (**Plate 39**). This showed a connecting doorway between the two works as well as a possible high blocked wall box, indicating power transmission between the two buildings.

Internal

- 5.4.7 Internally at ground floor (**Figure 12**) the range comprised two main rooms: G14 (**Plates 40-41**) and G15 (**Plates 42-43**). This would have originally been one large open workshop space, but had been divided by modern partitioning. Typically large fenestration within the southwest wall served the space, whilst a modern travelling crane had been inserted within G14 and G15. Room G16 (**Plates 44-46**) was located at the southeast end, within the single-storey section of the building. It is most likely that G16 originally functioned as an engine/motor room, providing power to the rest of the range, as well as possibly the formerly adjacent Times Steel Works. Little evidence was observed due to historic fabric being obscured by modern finishes at the time of the survey, however a high square blocking observed within the southeast elevation of the building (**Plate 39**), and a second high square blocking within the dividing wall between G16 and G15 with a large area of grease surrounding it, would suggest the former presence of wall boxes indicating the use of line shafting within the range (**Plate 43**). A doorway within the southeast wall of G16 further implies the ties with the former Times Steel Works. No other features which could be associated with the buildings' primary function were observed. To the north of G16 was an added staircase G17 (**Plate 47**) leading to the first floor of the building. This appears to have been added at a later phase, possibly during phase 10.

5.4.8 At first floor (**Figure 13**), the range contained rooms F11-F15. F14 was essentially a store space in the lean-to roof of the single-storey southeast end of the building, over G16 below (**Plate 48**). To the north of this was F15, a later phase 10 staircase, providing internal access between the ground and first floors of the building. The main access to the first floor was via an external staircase from the central courtyard. A large open space, divided by a modern partition, formed rooms F12 and F13. The southeast wall of F13 contained a large primary circular window with metal frames. Fenestration ran the length of the southwest wall, whilst the northeast wall of the first floor contained a blocked door within F13, and a large modern inserted taking-in door with hoist in F12 (**Plates 52-53**). The roof was supported by exposed timber joggled King-Post trusses and the floor was timber boarding. To the northwest of F12 was room F11. This had modern inserted partitions making up a small meeting room and two w.c.s. The dividing wall between F12 and F11, was an original phase 7 wall, and contained two blocked/blind windows, and a central inserted doorway within a former window opening (**Plates 49-51**). The north-westernmost end of the first floor had no access at the time of survey, most likely converted to a storage space during phase 10.

5.5 The Northwest Range

External

5.5.1 The Northwest Range of the works comprised three structures. The southwest end contained a single-storey building, made up of two phases of construction, whilst at the northeast end there were two, two-storey structures (**Figure 12**).

5.5.2 The single-storey building making up the southwest end of the range contained elements of an original phase 8 building, depicted on the 1890 town plan to the 1923 OS map (**Figure 7 and Plate 55**). This was contemporary with the north-western end of the southwest range. Most of this structure was replaced during phase 10 by the present structure which bridged the former gap in the range originally utilised by a travelling crane.

5.5.3 The southeast facing elevation of the range overlooked the central courtyard (**Figure 11**). The southwest end of the elevation comprised original phase 8 fabric which included three original arched openings, the central of which was a doorway, whilst the two flanking openings had been blocked (**Plate 55**). To the north east of these was a phase 10 window, with vertical join in the brickwork below the window, indicating the join of the two phases of the structure. Above the arched openings and window were four original phase 8 cast iron vents. The elevation above had been reduced in height during phase 10, and a pad stone inserted to support the new roof structure. Three RSJs had also been inserted within this section of the elevation.

5.5.4 The remainder of the buildings southeast elevation was made up of a steel framed structure with brick fills, large multi-paned window and a large roller shutter door, all dating to between 1923 and 1935 (phase 10). The roof was pitched with a modern steel covering (**Plate 54**).

- 5.5.5 Attached to the northeast of this was a phase 2, two-storey, L-shaped building. Its gable comprised part of the ranges southeast elevation (**Plates 56 and 57**) and contained a large opening at ground floor which had been partially blocked with the insertion of a brick infill, window and doorway. At first floor was an original taking-in door with brick relieving arch over an RSJ lintel, and timber double doors and adjacent window. Beneath the taking-in door are joist holes which suggest the former presence of a timber platform projecting from the elevation.
- 5.5.6 Originally between this structure and the northeast range there had been an external yard area. This was infilled however during phase 9 (1905-1923), by a building providing an internal staircase between the ground and first floors of the northeast range, and a first floor extension. Its southeast elevation (**Plate 58**) contained a large opening at ground floor which provided a covered area with access to the northeast range. Above this was a large metal framed multi-paned window with frosted glass, concrete lintel and bull-nosed brick sill.

Internal

- 5.5.7 Internally the single-storey southwest end of the range contained a single space (G18) with travelling crane, and modern partitioned office rooms at the southwest end (**Plates 59 and 60**). The roof was carried on phase 10 angle iron roof trusses.
- 5.5.8 The L-shaped phase 2 building, attached to the southwest corner of the northeast range, contained rooms G6, G10 and G11 at ground floor (**Plates 61-65**). These were essentially two spaces with an inserted corridor (G10) using corrugated metal sheeting, and a modern inserted office within G11. G11 was accessed from a doorway within the southeast elevation from the courtyard, whilst G6 could only be accessed via the inserted corridor G10 and through an enclosed but open external area, G7 (**Figure 12 and Plate 64**). At first floor there were two rooms, F7 and F10, which were connected to each other. Both were accessed from the external, yet enclosed staircase and walkway F8 (**Plates 66-69**).
- 5.5.9 Rooms G8, G9 and F9 (**Figures 12 and 13**) were created between 1905 and 1923 (phase 9). G8 was an added internal staircase connecting the ground and first floors of the northeast range, yet an external staircase was retained in addition in order to provide separate access to room F7 and F10. Room F9 was accessed from the first floor of the northeast range only and provided w.c facilities for the range (**Plate 70**). G9 below was essentially a covered external space.

6 CONCLUSIONS

6.1 Discussion

- 6.1.1 The Caledonia Works (Union Foundry) appears to have been a typical 19th-century, medium-sized integrated works complex which developed over 8 phases between 1870 and 1890. Later development to the works occurred during the interwar years (phases 9 and 10), with only minor modern alterations and additions post 1950s (phase 11).

- 6.1.2 The general layout of the works did not change from its initial construction, and the general function for each range can be inferred from their form, position and retained historical features. The Northeast Range, fronting Mowbray Street, would have been the offices of the works, with room G3 most probably functioning as a time office. The southeast end of the range (G5) was incorporated as part of the southeast range, whilst at first floor (F5), the space was utilised as an office, with windows which overlooked the working foundry in the southeast range (G12) below. F5 was probably the works manager's office.
- 6.1.3 The Southeast Range (G12 & G5) would have been the foundry of the works, where there would have originally been a cupola furnace, and a sand floor for casting the iron into moulds. However, no retained historical features survived that related to the range's original function. Within the phase 1 southeast wall was a blocked doorway which would have once led directly to the former adjacent Times Steel Works, indicating their once symbiotic relationship. Room G13 was originally open to the northwest, and may have been used for fettling the iron once cast.
- 6.1.4 The Southwest Range contained a single-storey section at the southeast end (G16). It is suggested that this room was originally an engine or motor room. From here, power could be transferred through the rest of the range, as well as to the former adjacent Times Steel Works. This is indicated by two possible high blocked wall boxes, which are indicative of power transmission via line shafting. It is likely that the finishing of products, in the form of machining, grinding, polishing etc, would have taken place within this range. These processes require power, and the Southwest Range is the only building on the site to have retained any evidence of power transmission. At first floor within the range (F11, F12, F13), the rooms contained timber boarded floors, suggesting that there had not been any heavy machinery within the space, and there appeared to be no evidence of power transmission. However, due to the large amount of fenestration, it is likely that there had been work benches positioned along the northeast and southwest walls, providing work space for packing and storage.
- 6.1.5 The Northwest Range would have originally been very similar to the Southwest Range, being two storeys in height and most likely also containing power, and therefore machinery. However, this was altered during phase 10 (1923-1935), to a longer, single-storey steel framed building. This may have been used as a pattern shop, with the two-storey L-shaped building to the northeast possibly utilised as a pattern store or final product storage ready to be dispatched.
- 6.1.6 It is unusual for a works of this type and date to not have some form of cellage, certainly within the principal range, or a weigh machine set within the cart passage of the works.
- 6.1.7 The Caledonia Works was essentially a typical small integrated works, conforming to most industrial forms and architectural styles of the industry and time, within the local area. Its relationship with the former adjacent Times Steel Works was originally symbiotic, indicated by the once direct access between the two sites. A crucible furnace located at the Times Steel

Work may have also produced iron for the Caledonia Works. Whilst the Caledonia Works appears to have provided power to the Times Steel Works.

- 6.1.8 The recording of the historic buildings on the Site has produced archives that are currently held in the Wessex Archaeology Sheffield Office and will be deposited, along with a copy of this report, with Sheffield Archives within six months of this report. Further copies of this report will be deposited with the Client, and South Yorkshire HER.
- 6.1.9 An OASIS form will be completed at <http://ads.ahds.ac.uk/projects/oasis> for inclusion in the ADS database. This will include an electronic copy of this report in PDF format which will be accessible six months after deposition.

7 REFERENCES

7.1 Consulted Sources

- Baker, S and Chan, B. 2006. *17-39 Mowbray Street, Sheffield: Archaeological Evaluation and Mitigation*. ARCUS Report 804c.2
- Buck, S. c1720. *Samuel Buck's Yorkshire Sketchbook*. Wakefield: Wakefield Historical Publications, facsimile ed. 1979.
- CgMs. 2007. *A Specification for Standing Building Recording : Land at the Caledonia Works, 41 Mowbray Street, Sheffield*. Unpublished report, CgMs Newark
- English Heritage, 2006. *Understanding Historic Buildings: A guide to good recording practice*.
- Institute for Archaeologists, 2008. *Standards and guidance for the archaeological investigation and recording of standing buildings or structures*.
- Jessop, O. 2004. *Archaeological Assessment and Buildings Appraisal of Numbers 17-39 Mowbray Street, Sheffield, South Yorkshire*. ARCUS Report 804.1
- Jones, W. 2006. *Dictionary of Industrial Archaeology*. Stroud: Sutton
- JSAC. 2006. *An archaeological Desk-Based Assessment of The Caledonia Works/Union Foundry, Mowbray Street, Sheffield*. CgMs Newark
- Wray, N. 2000. *'One Great Workshop': The Buildings of the Sheffield Metal Trades*. London: English Heritage

7.2 Online Sources

- <http://www.picturesheffield.com/>

7.3 Consulted Cartographic Sources

- 1736 Ralph Gosling's plan of Sheffield
- 1771 Fairbank Town Map
- 1771 Thomas Jeffery's Map of Yorkshire
- 1851 OS Map
- 1863 White's Directory Map Extract
- 1890 Sheffield Town Plan
- 1892-94 OS Map
- 1905 OS Map

- 1923 OS Map
- 1935 OS Map
- 1953-55 OS Map

8 APPENDIX I – PHOTOGRAPHIC REGISTERS

Film 1		Film type: Colour Medium Format
Frame	Description	View From
1	General view of the southwest elevation of the Northeast range	SW
2	General view of the southeast elevation of the Northwest Range and the southwest elevation of the Northeast Range – north corner of the central courtyard	S
3	General view of the southeast elevation of the Northwest Range, north corner of the central courtyard	SE
4	General view of the southeast elevation of the Northwest Range, north corner of the central courtyard	SE
5	General view of the southeast elevation of the phase 10 section of the Northwest Range	E
6	General view of the southeast elevation of the phase 10 section of the Northwest Range	E
7	General view of the northeast elevation of the Southwest Range	NE
8	General view of the northwest elevation of the Southeast Range	NW
9	General view of the northwest elevation of the Southeast Range	NW
10	General view of the northwest elevation of the Southeast Range	NW
11	General view of the northeast elevation of the Northeast Range	NE
12	General view of the northeast elevation of the Northeast Range	NE

Film 2		Film type: B&W Medium Format
Frame	Description	View From
1	General view of the southwest elevation of the Northeast range	SW
2	General view of the southwest elevation of the Northeast range	SW
3	General view of the southeast elevation of the Northwest Range and the southwest elevation of the Northeast Range – north corner of the central courtyard	S
4	General view of the southeast elevation of the Northwest Range, north corner of the central courtyard	SE
5	General view of the southeast elevation of the Northwest Range, north corner of the central courtyard	SE
6	General view of the southeast elevation of the phase 10 section of the Northwest Range	E
7	General view of the southeast elevation of the phase 10 section of the Northwest Range	E
8	General view of the northeast elevation of the Southwest Range	NE
9	General view of the northwest elevation of the Southeast Range	NW
10	General view of the northwest elevation of the Southeast Range	NW
11	General view of the northwest elevation of the Southeast Range	NW
12	General view of the northeast elevation of the Northeast Range	NE

Film 3		Film type: B&W Medium Format
Frame	Description	View From
1	General view of the southwest elevation of the Southwest Range	SE
2	General view of the southwest elevation of the Southwest Range	SE
3	General view of the southwest elevation of the Southwest Range	S
4	General view of the southwest elevation of the Southwest Range	S
5	General view of the southwest elevation of the Southwest Range	S
6	General view of the southwest elevation of the Southwest Range	S
7	General view of the southwest elevation of the Southwest Range	SE
8	General view of the southwest elevation of the Southwest Range	SE
9	General view of the southwest elevation of the Southwest Range	SE

Film 4		Film type: B&W Medium Format
Frame	Description	View From
1	General view of F2	NW
2	General view of F2	SE
3	General view of F3	W
4	General view of F3	S
5	General view of F4	W
6	General view of F4	S
7	View of windows in northeast wall of F5	SW
8	General view of F5	NW
9	General view of F5	NW
10	General view of F5, showing windows in southwest wall	N
11	General view of F5	SE
12	General view of F5	SE

Film 5		Film type: B&W Medium Format
Frame	Description	View From
1	General view of F16	SE
2	General view of F16	NW
3	General view of G15	NW
4	General view of G15	NW
5	General view of G14	NE
6	General view of G14	E
7	General view of G14	SE
8	General view of G14	W
9	General view of G14	NW
10	General view of G18	NE
11	General view of G18	SW
12	General view of G12, showing overlooking windows in room F5	SW

Film 6		Film type: B&W Medium Format
Frame	Description	View From
1	General view of G12, showing overlooking windows in room F5	SW
2	General view of G12	NE
3	General view of G12	NE
4	View of the southeast wall of G12	NW
5	General view of the southeast wall of G12	N
6	View of the northwest wall of G12	SE
7	General view of the northwest wall of G12	E
8	General view of G4	S
9	VOID	-
10	General view of G11	SE
11	General view of G11	NW
12	General view into F1	S

Film 7		Film type: B&W Medium Format
Frame	Description	View From
1	View of windows in southwest wall of F11a	NE
2	General view of F11a	E
3	General view of F11a	NW
4	General view of F11	SW
5	General view of F11	N
6	General view of F12	NW
7	General view of F12	NW
8	General view of F12	N
9	General view of F12	E
10	General view of F12	SE
11	General view of F12	S
12	View of gable, F13	NW

Film 8		Film type: B&W 35mm
Frame	Description	View From
1	Detail of join between phase 2 and 9 elements of the Northwest Range, north corner of the central courtyard	S
2	Detail of doorway to G11, southeast elevation of the Northwest Range	SE
3	Detail of window, southeast elevation of the Northwest Range	SE
4	Detail of first floor taking-in door to F10, southeast elevation of the Northwest Range	SE
5	Detail of first floor taking-in door to F10, southeast elevation of the Northwest Range	SE
6	Detail of opening to G9, southeast elevation of the Northwest Range	SE
7	Detail of first floor window of F9, southeast elevation of the Northwest Range	SE
8	Detail of ground floor doorway to G4, southwest elevation of the Northeast Range	SW
9	Detail of the cart passage structure, southwest elevation of the Northeast Range	SW
10	Detail of the cart passage structure, southwest elevation of the Northeast Range	SW
11	Detail of structure join and roof heights, southwest elevation of the Northeast Range	SW
12	Detail of first floor and roof, southwest elevation of the Northeast Range	S
13	Detail of roof vent, Northeast Range	SW
14	Detail of original first floor window, altered to door and partially blocked, southwest elevation of the Northeast Range	SW
15	VOID	
16	Detail of first floor window and inserted door, southwest elevation of the Northeast Range	SW
17	Detail of inserted hoist on trusses, F12	N
18	Detail of inserted hoist on trusses, F12	-
19	Detail of inserted hoist on trusses, F12	N
20	Detail of inserted hoist on trusses, F12	S
21	Detail of inserted hoist on trusses, F12	-
22	Detail of inserted hoist on trusses, F12	
23	Detail of inserted hoist on trusses, F12	
24	Detail of inserted hoist on trusses, F12	NW
25	Detail of inserted hoist on trusses, F12	W
26	Detail of tie beam and principal rafter join, F12	N
27	Detail of truss, F12	-
28	Detail of purlins, F12	-
29	Detail of joggled King-Post truss, F12	-
30	Detail of trusses, F12	-
31	Detail of trusses, F12	-
32	Detail of tie beam and principal rafter join, F12	-
33	Detail of trusses, F12	-
34	General view of F12	NW
35	General view of F12	NW
36	General view of F12, showing modern hoist, taking-in door and partition	NW

Film 9		Film type: B&W 35mm
Frame	Description	View From
11	Detail of the northwest elevation of the Northeast and Southeast Ranges	W
12	General view of the phase 11, G19 – east corner of the central courtyard	W
13	View of modern fire escape, southwest elevation of the Northeast Range	SW
14	Detail of the first floor inserted door and modern fire escape, southwest elevation of the Northeast Range	W
15	Detail of the northwest gable of the southeast end of the Northeast Range	W
16	Detail of the northwest gable of the southeast end of the Northeast Range and join with the Southeast Range	W
17	Detail of truncated timber of former travelling crane, northwest elevation of the Southeast Range	W
18	Detail of the lower section of the entrance in the northwest elevation of the Southeast Range	NW
19	Detail of the upper section of the entrance in the northwest elevation of the Southeast Range	NW
20	Detail of the upper section of the entrance in the northwest elevation of the Southeast Range	NW
21	Detail of truncated timber of former travelling crane, northwest elevation of the Southeast Range	NW
22	Detail of alterations in the northwest elevation of the Southeast Range	NW
23	Detail of blocked window, northwest elevation of the Southeast Range	NW
24	Detail of chimneys, roof at the east corner of the complex (Northeast and Southeast Ranges)	SW
25	Detail of guttering and roof line, Southeast Range	SW
26	Detail of guttering and roof line, Southeast Range	SW
27	Detail of guttering and roof line, Southeast Range	SW
28	Detail of guttering and roof line, and join of phase 5 and 11, Southeast Range	NW
29	Detail of guttering and roof line, Southeast Range	NW
30	Detail of blocked door, northwest elevation of the Southeast Range	SW
31	Detail of modern loading door, northwest elevation of the Southeast Range	SW
32	Detail of modern loading door, northwest elevation of the Southeast Range	NW
33	Detail of phase 11 doorway and window, northwest elevation of the Southeast Range	NW
34	Detail of phase 11 first floor window, northwest elevation of the Southeast Range	NW
35	Detail of phase 11 first floor doorway and window, northwest elevation of the Southeast Range	NW
36	Detail of first floor entrance to Southeast and Southwest Ranges from external stairway	NW

Film 10		Film type: B&W 35mm
Frame	Description	View From
1	Detail of first floor doorway, northeast elevation of the Southwest Range	N
2	Detail of first floor windows, northeast elevation of the Southwest Range	N
3	Detail of first floor windows, northeast elevation of the Southwest Range	N
4	Detail of first floor windows, northeast elevation of the Southwest Range	NE
5	View into G14 from courtyard	N
6	Detail of external staircase against the northeast elevation of the Southwest Range	N
7	Detail of original ground floor window, northeast elevation of the Southwest Range	NE
8	Detail of original ground floor window, northeast elevation of the Southwest Range	NE
9	Detail of original ground floor window, northeast elevation of the Southwest Range	NE
10	Detail of external staircase against the northeast elevation of the Southwest Range	NE
11	Detail of external staircase against the northeast elevation of the Southwest Range, and view into G14	NE
12	Detail of external staircase against the northeast elevation of the Southwest Range	NE
13	Detail of external staircase against the northeast elevation of the Southwest Range	N
14	Detail of external staircase against the northeast elevation of the Southwest Range	N
15	Detail of truncated timber joists, northeast elevation of the Southwest Range	NE
16	Detail of truncated timber joists, northeast elevation of the Southwest Range	NE
17	Detail of truncated timber joists, northeast elevation of the Southwest Range	NE
18	Detail of join between phases 7 & 8 of the Southwest Range, and altered opening, northeast elevation	NE
19	Detail of altered opening, northeast elevation of the Southwest Range	NE
20	Detail of blocked openings, ground floor of the northeast elevation of the Southwest Range	NE
21	Detail of blocked openings, ground floor of the northeast elevation of the Southwest Range	NE
22	Detail of blocked openings, ground floor of the northeast elevation of the Southwest Range	NE
23	VOID	
24	Detail of blocked doorway, southeast elevation of the Northwest Range	E
25	Detail of doorway, southeast elevation of the Northwest Range	E
26	Detail of blocked doorway, southeast elevation of the Northwest Range	E
27	Detail of cast iron wall vents, southeast elevation of the Northwest Range	E
28	Detail of cast iron wall vents and inserted RSJs, southeast elevation of the Northwest Range	E
29	Detail of cast iron wall vents and inserted RSJs, southeast elevation of the Northwest Range	E
30	Detail of cast iron wall vents, southeast elevation of the Northwest Range	E
31	Detail of phase 10 window, southeast elevation of the Northwest Range	SE
32	Detail of large phase 10 window, southeast elevation of the Northwest Range	SE
33	Detail of large phase 10 window, southeast elevation of the Northwest Range	SE
34	Detail of large phase 10 window and loading door, southeast elevation of the Northwest Range	SE
35	Detail of large phase 10 window and loading door, southeast elevation of the Northwest Range	SE
36	Detail of large phase 10 window, southeast elevation of the Northwest Range	SE
37	Detail of large phase 10 window, southeast elevation of the Northwest Range	SE

Film Digital		Film type: Digital	
Frame	Description	View From	Report Plate
1	General view of the northeast elevation of the Northeast Range, fronting Mowbray Street (Stitched)	N	
2	General view of the northeast elevation of the Northeast Range, fronting Mowbray Street (Stitched)	NE	
3	General view of the northeast elevation of the Northeast Range, fronting Mowbray Street (Stitched)	N	
4	General view of the northeast elevation of the Northeast Range, fronting Mowbray Street (Stitched)	N	2
5	View of the northeast elevation of the southeast end of the Northeast Range	NE	3
6	General view of the northeast elevation of the Northeast Range	NE	
7	General view of the northeast elevation of the Northeast Range	NE	
8	General view of the northeast elevation of the Northeast Range	NE	
9	View of the northeast elevation of the southeast end of the Northeast Range	N	
10	General view of the northeast elevation of the Caledonia Works from Mowbray Street	NW	1
11	General view into courtyard from cart passage in Northeast Range	N	
12	General view of the southwest elevation of the Northeast Range	SW	4
13	Detail of the southwest elevation of the cart passage, Northeast Range	SW	5
14	View of the southwest elevation of the southeast end of the Northeast Range	SW	6
15	General view of G3	NE	7
16	General view of G3 showing staircase G8 beyond	NE	8
17	General view of G2a	NW	9
18	General view of G1	NE	11
19	General view of G2 showing blocked fireplace	SE	10
20	General view of G4	SE	12
21	General view of G5 looking towards G4	SE	13
22	General view of G5 from G12	SW	14
23	General view of F1	SW	15
24	General view of F1	NE	16
25	View of roof structure and skylight, F1	NE	
26	General view of F2	NW	17
27	General view of F3	NW	18
28	General view of F4	NW	
29	General view of F4	NW	19
30	General view of F5	SE	20
31	General view of F5	SE	21
32	General view of Southeast and Southwest Ranges across courtyard from cart passage	N	22
33	View of modern lean-to w.c. – G19	NW	23
34	General view of the northwest elevation of the Southeast Range (stitched)	NW	24
35	General view of the northwest elevation of the Southeast Range	NW	
36	General view of the northwest elevation of the Southeast Range	NW	
37	General view of the northwest elevation of the Southeast Range	NW	25
38	General view of G12	SW	26
39	Detail of travelling crane within G12	SW	
40	Detail of travelling crane within G12	SW	
41	View of southeast wall with blocked door and travelling crane, G12	SW	28
42	View of southeast wall and travelling crane, G12	NW	
43	View of angle iron roof trusses and skylights, G12	SW	
44	View of the southwest wall of G12 showing raised upper section and blocked door	NE	27
45	General view of G13	NW	33
46	General view of G13	NW	
47	General view of mezzanine above G13	NW	34

48	General view of corridor at southwest of G13	NW	
49	General view of corridor at southwest of G13	SE	
50	General view of F16	NW	35
51	General view of F16	SE	36
52	View of the northwest elevation of the Southeast Range and the northeast elevation of the Southwest Range (Stitched)	N	
53	General view of the northeast elevation of the Southwest Range	NE	37
54	General view of the northeast elevation of the Southwest Range	NE	
55	General view of the northeast elevation of the Southwest Range	N	
56	General view of the northeast elevation of the Southwest Range	NE	
57	View of original ground floor windows, northeast elevation of the Southwest Range	N	
58	General view of the northeast elevation of the Southwest Range, showing external staircase, and ground & first floor entrances	NE	
59	View of first floor windows, truncated joists and ground floor blocked openings, northeast elevation of the Southwest Range	NE	
60	View of ground floor blocked openings, northeast elevation of the Southwest Range	NE	
61	General view of the southwest elevation of the Southwest Range	S	38
62	Detail of the southeast wall of the Southwest Range, and former adjacent works wall, showing possible blocked wall box	SE	39
63	View of the southeast end of the southwest elevation of the Southwest Range, showing join in brickwork	SW	
64	View of the northwest end of the southwest elevation of the Southwest Range	SE	
65	Detail of vertical join in brickwork, southwest elevation of the Southwest Range	S	
66	General view of G14	SE	40
67	General view of G14	NW	41
68	General view of G15	SE	42
69	General view of G15, showing possible high blocked wall box	NW	43
70	General view of the southeast elevation of the Northwest Range, from cart passage	NE	
71	General view of corridor in G16	NW	44
72	General view of inserted room in northeast corner of G15	NW	
73	VOID	-	
74	General view of inserted room within G16	NW	45
75	General view of inserted room within G16	NW	46
76	General view of inserted lobby/corridor in east corner of G15	SE	
77	General view up staircase G17	NW	47
78	General view of roof void F14 from F15	NE	48
79	General view of F12	SE	52
80	General view of F12	NW	53
81	General view of F11	SE	49
82	General view of F11	SE	50
83	General view of F11a	NW	51
84	General view of the southeast elevation of the Northwest Range	SE	55
85	General view of the southeast elevation of the Northwest Range	SE	
86	General view of the southeast elevation of the Northwest Range	SE	
87	General view of the southeast elevation of the Northwest Range	SE	
88	General view of the southeast elevation of the Northwest Range	E	54
89	General view of the northeast end of the southeast elevation of the Northwest Range	S	56
90	General view of the northeast end of the southeast elevation of the Northwest Range	S	
91	General view of the northeast end of the southeast elevation of the Northwest Range	SE	57
92	General view of the northeast end of the southeast elevation of the Northwest Range, showing G9	SE	58
93	General view of G18	SW	59
94	General view of G18	NE	60
95	General view of inserted rooms at the southwest end of G18	NE	
96	General view of inserted rooms at the southwest end of G18	SE	
97	General view of G11	SE	61

98	General view of G11	NW	62
99	General view of external staircase G7	S	64
100	General view of inserted corridor G10	SE	63
101	General view of G6	SE	65
102	General view of the entrance to F7, southeast elevation, from F8	E	66
103	General view of entrance to F10, northeast elevation, from F8	N	68
104	General view of F7	SE	67
105	General view of F10	NW	69
106	General view of F10	SW	
107	General view of F9	N	70
108	Watching brief details: Southwest wall of G12	N	
109	Watching brief details: Southwest wall of G12	N	
110	Watching brief details: Removed travelling crane	NW	
111	Watching brief details: Change in wall fabric	N	
112	Watching brief details: South corner of G12	N	29
113	Watching brief details: South corner of G12	N	
114	Watching brief details: Change in wall fabric	NW	
115	Watching brief details: South corner of G12	N	
116	Watching brief details: Southeast wall of the Southeast Range	N	30
117	Watching brief details: View across courtyard	E	
118	Watching brief details: General shot of demo	NE	
119	Watching brief details: General shot of demo	NE	
120	Watching brief details: General shot of demo	NE	
121	Watching brief details: Southeast wall of the Southeast Range	W	
122	Watching brief details: Southeast wall of the Southeast Range	W	
123	Watching brief details: Northwest wall of the Southeast Range showing flue	SW	32
124	Watching brief details: Southwest wall of the Northeast Range	SW	31
125	Watching brief details: General shot of demo	NW	
126	Watching brief details: General shot of demo	N	
127	Watching brief details: Southwest wall of G12	N	

9 APPENDIX II – MEDIUM FORMAT CONTACT SHEETS

Film 01:



Film 02:



Film 03:



Film 04:



Film 05:



Film 06:

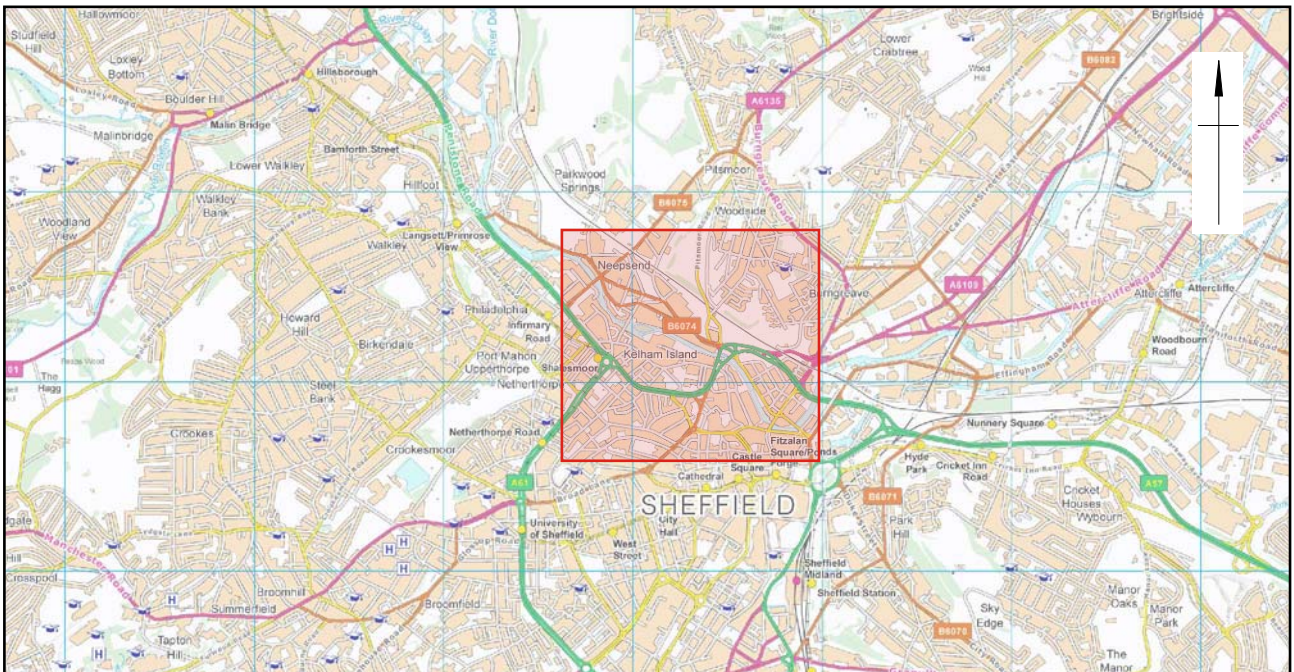


Film 07:



10 APPENDIX III – INDEX TO ARCHIVE

Paper archive			
To be deposited within six months of this report			
Folder no.	Folder type	Items	No.
1	A4 Lever arch folder	Copy of final report	1
		CD containing pdf of final report with all digital photography	1
		3x35mm films (Prints and negatives)	3
		Photographic view point plans	3
		Measured survey drawings and phased plans	2 floor plans and 5 elevations



Reproduced from the 2011 Ordnance Survey District Raster / Streetview © map with the permission of the controller of Her Majesty's Stationery Office © Crown copyright, Wessex Archaeology, Portway House, Old Sarum Park, Salisbury, Wiltshire. SP4 6EB. Licence Number: 100028190.

This material is for client report only © Wessex Archaeology. No unauthorised reproduction.

Date:	March 2011	Revision Number:	1.0
Scale:	1:8000 @ A4	Illustrator:	CB
Path:	Y:\Projects\T15749 (Caledonia Works, Sheffield)\Drawing Office\Report Figs\Buildings Report\March 2012		



Site location

Figure 1



Historic map - Ralph Gosling 1736



Historic map - Fairbank Town Map 1771

This material is for client report only © Wessex Archaeology. No unauthorised reproduction.

Date: March 2012

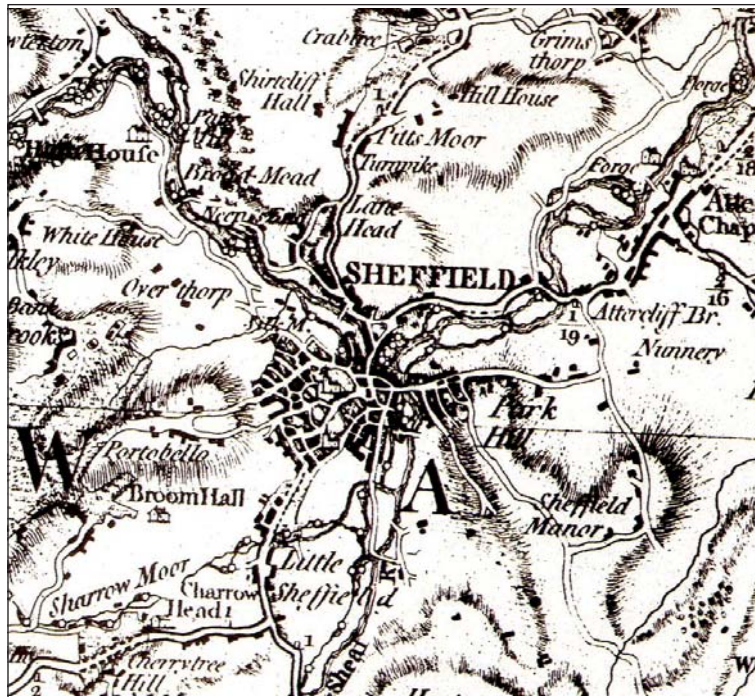
Revision Number: 1.0

Scale: N/A

Illustrator: CB

Path: Y:\Projects\T15749 (Caledonia Works, Sheffield)\Drawing Office\Report Figs\Buildings Report\March 2012





Historic map - Thomas Jeffery's Map 1771



Historic map - 1851 OS

This material is for client report only © Wessex Archaeology. No unauthorised reproduction.

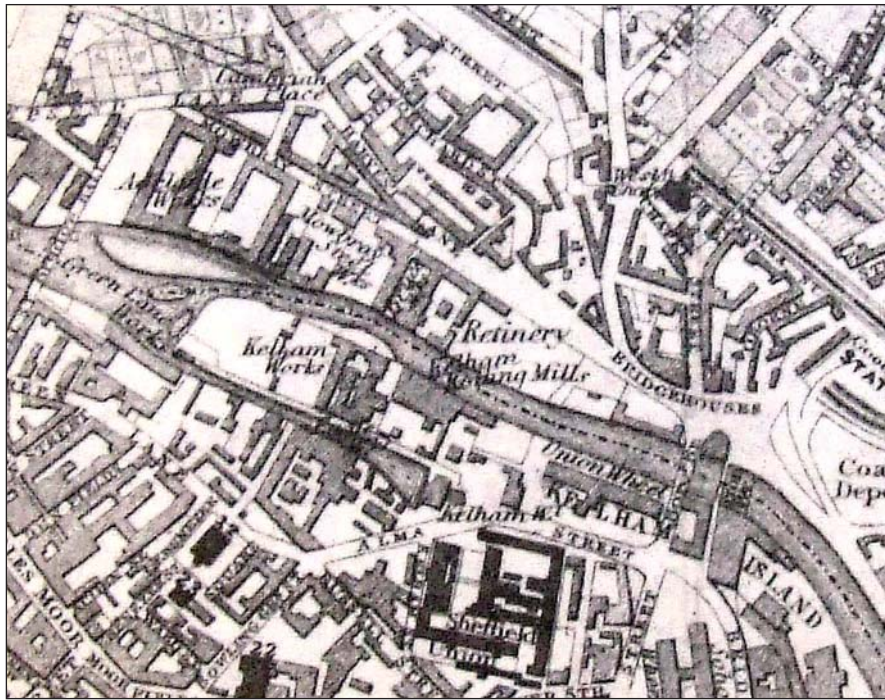
Date: March 2012

Revision Number: 1.0

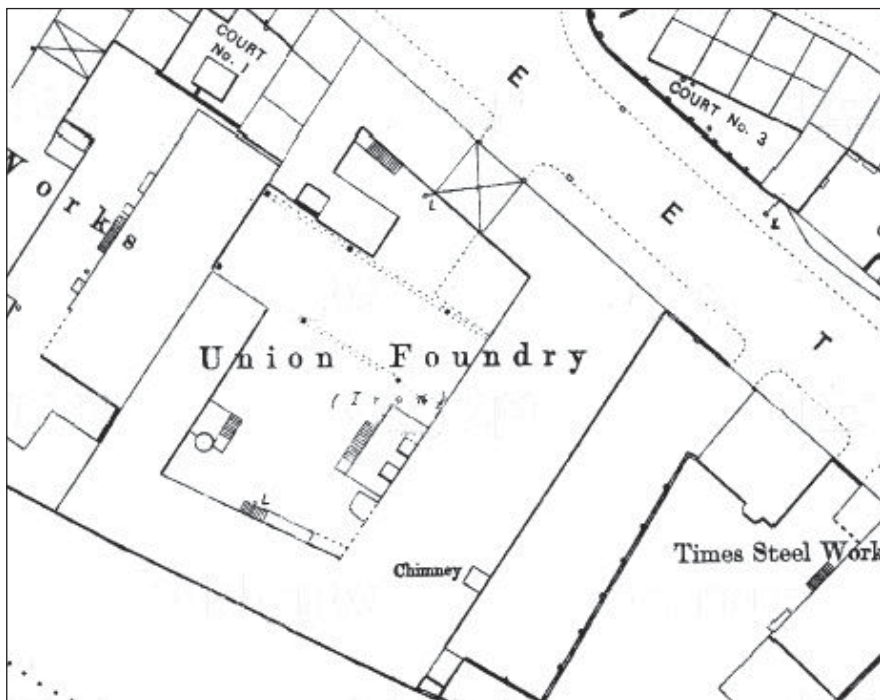
Scale: N/A

Illustrator: CB

Path: Y:\Projects\T15749 (Caledonia Works, Sheffield)\Drawing Office\Report Figs\Buildings Report\March 2012



Historic map - White 1863

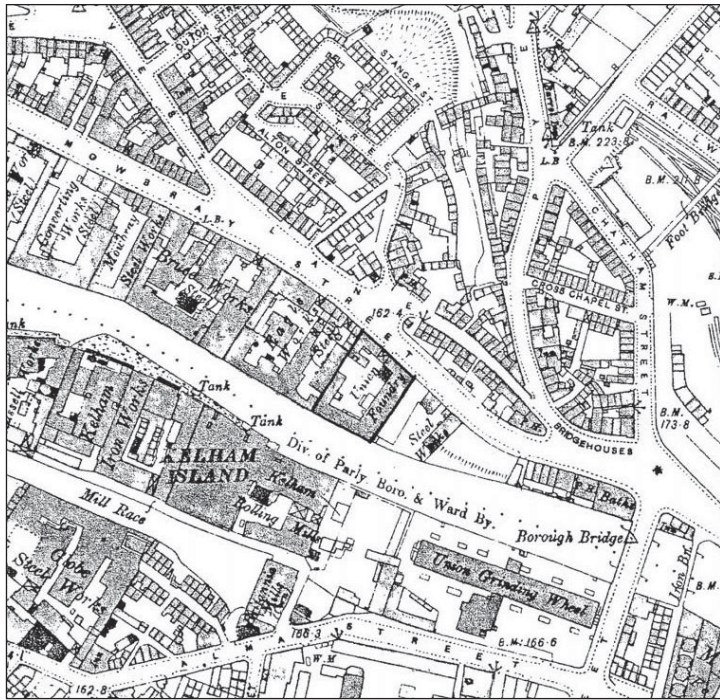


Historic map - 1890 Town Plan

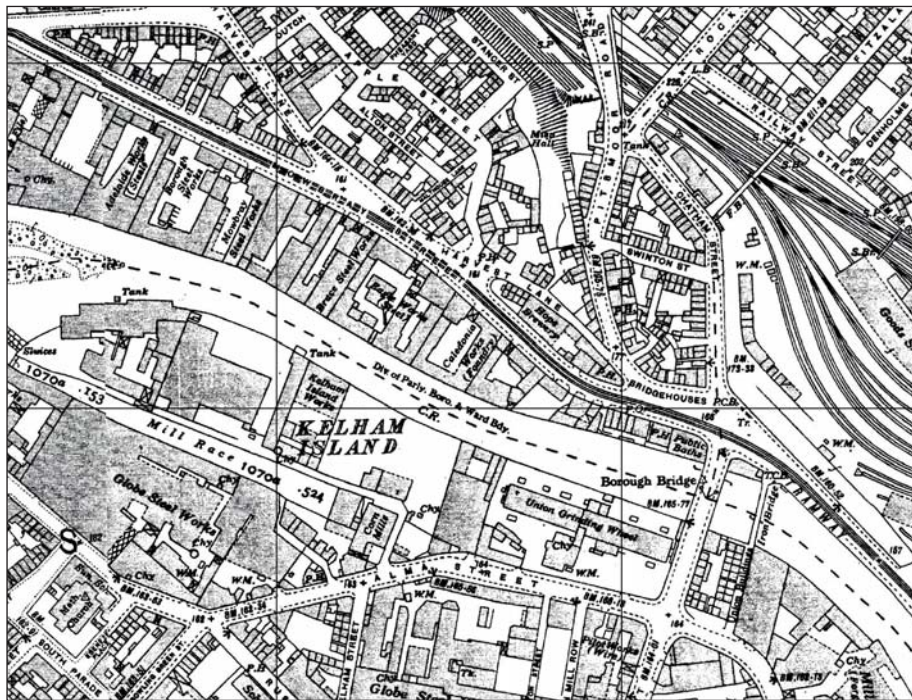
This material is for client report only © Wessex Archaeology. No unauthorised reproduction.



Date:	March 2012	Revision Number:	1.0
Scale:	N/A	Illustrator:	CB
Path:	Y:\Projects\T15749 (Caledonia Works, Sheffield)\Drawing Office\Report Figs\Buildings Report\March 2012		



Historic map - 1895 OS



Historic map - 1935 OS

This material is for client report only © Wessex Archaeology. No unauthorised reproduction.

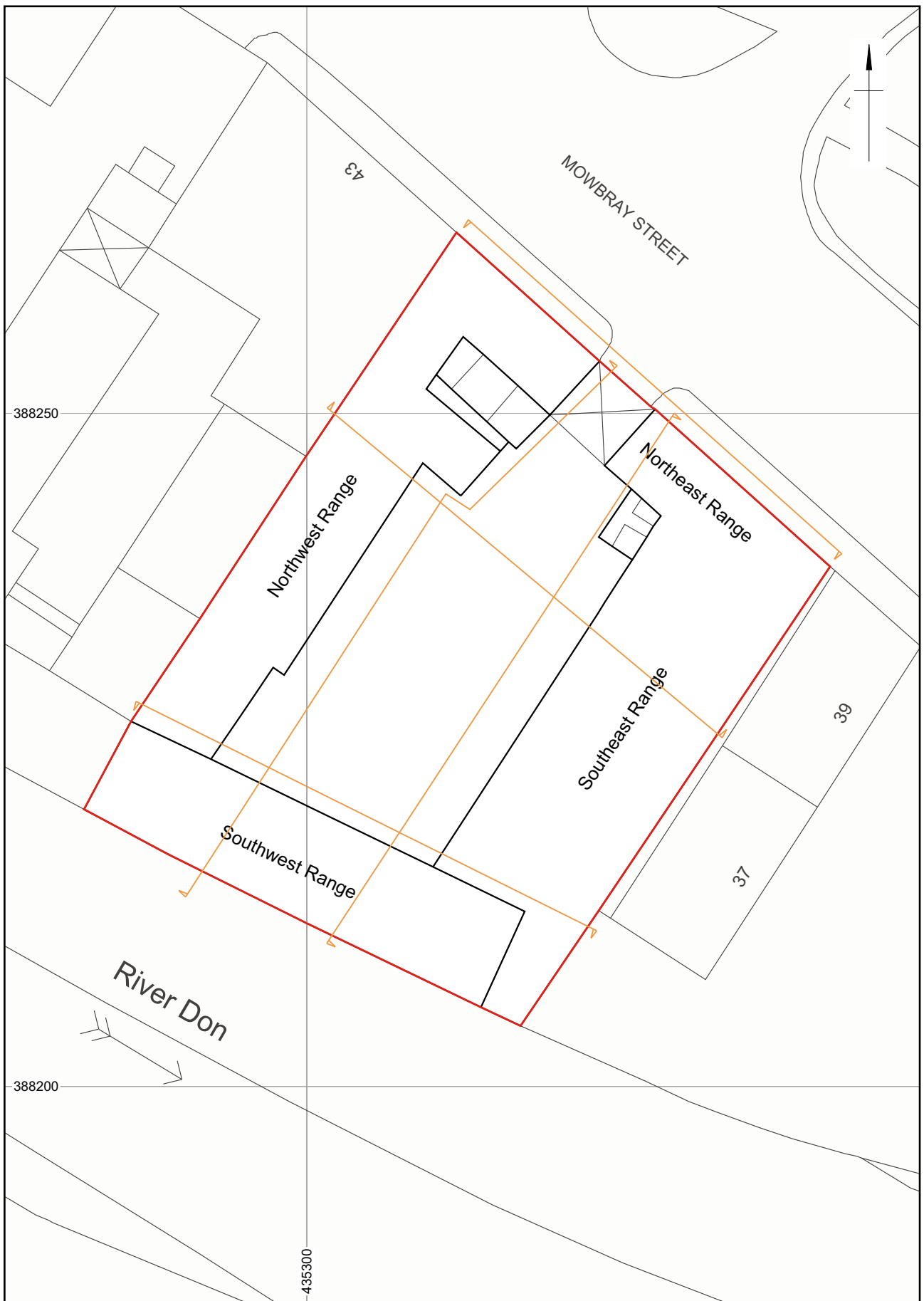
Date: March 2012

Revision Number: 1.0

Scale: N/A

Illustrator: CB

Path: Y:\Projects\T15749 (Caledonia Works, Sheffield)\Drawing Office\Report Figs\Buildings Report\March 2012



Digital data reproduced from Ordnance Survey data © Crown Copyright 2009 All rights reserved. Reference Number: 100020449.
 This material is for client report only © Wessex Archaeology. No unauthorised reproduction.

Date: March 2011

Revision Number: 1.0

Scale: 1:400 @ A4

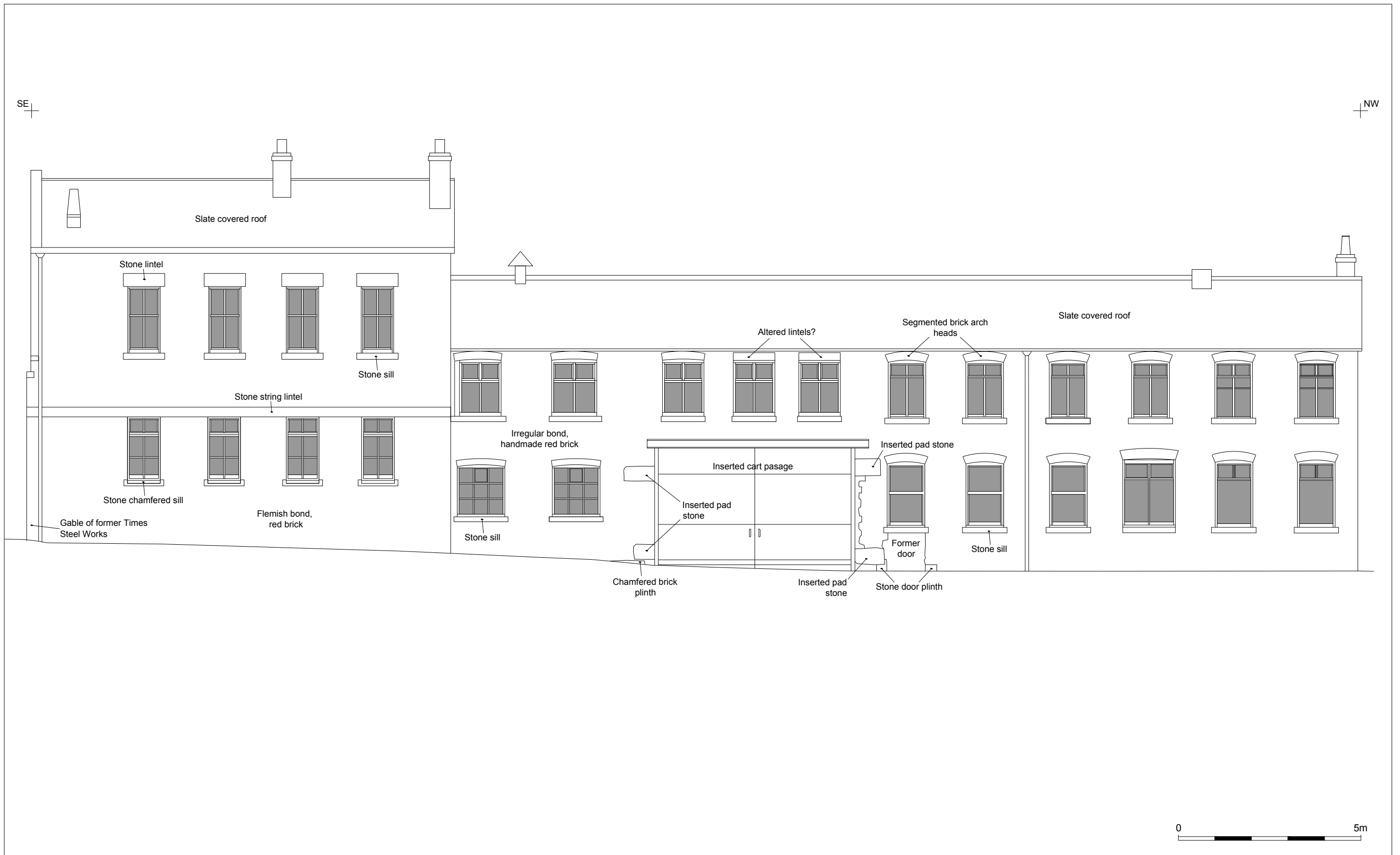
Illustrator: CB

Path: Y:\Projects\T15749 (Caledonia Works, Sheffield)\Drawing Office\Report Figs\Buildings Report\March 2012



Site plan

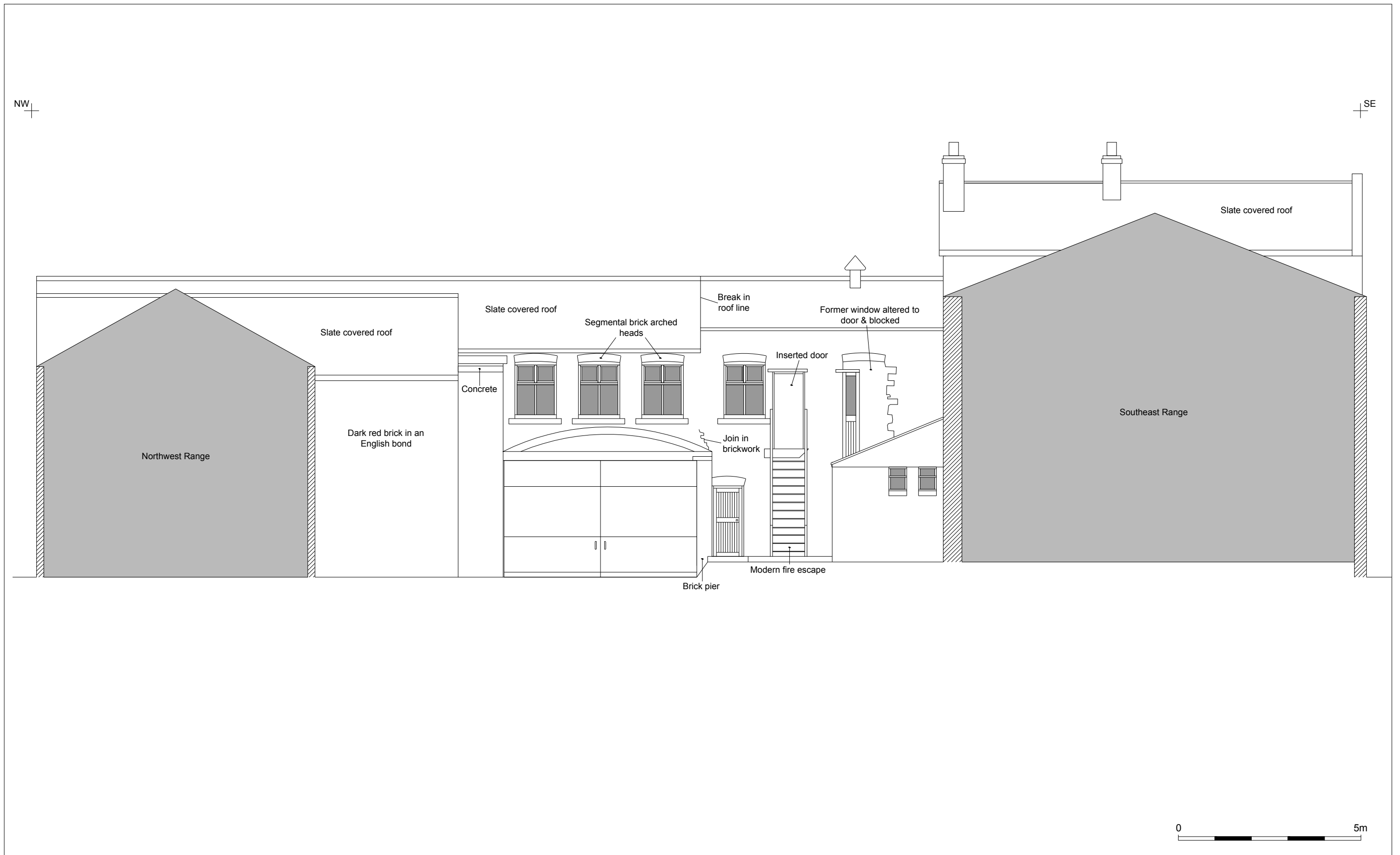
Figure 6



Date:	April 2012	Revision Number:	1.0
Scale:	1:100 @ A3	Illustrator:	CB
Path:	Y:\Projects\T15749 (Caledonia Works, Sheffield)\Drawing Office\Report Figs\Buildings Report\March 2012		

Elevation 1 - Northeast elevation of the Northeast range

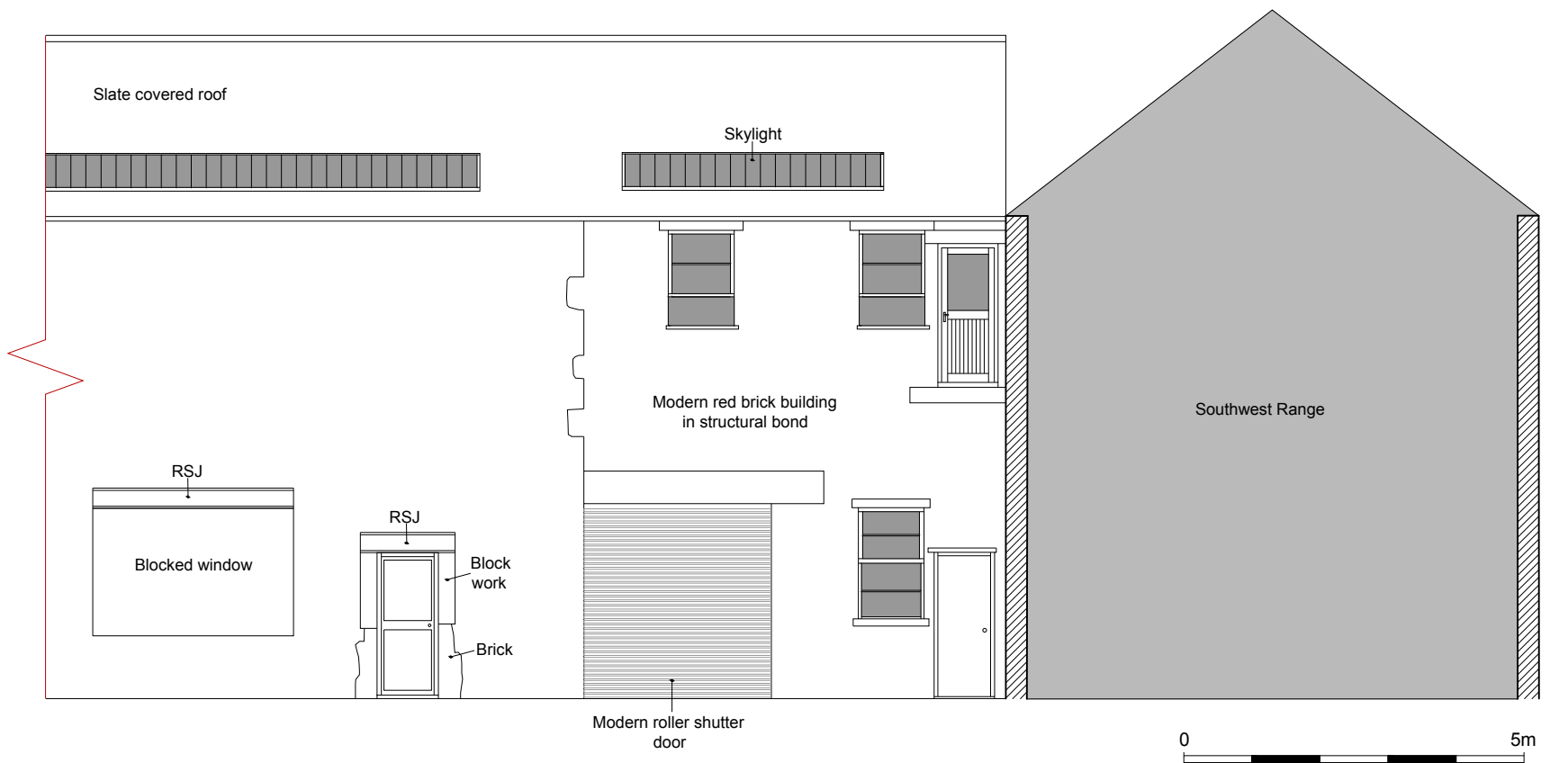
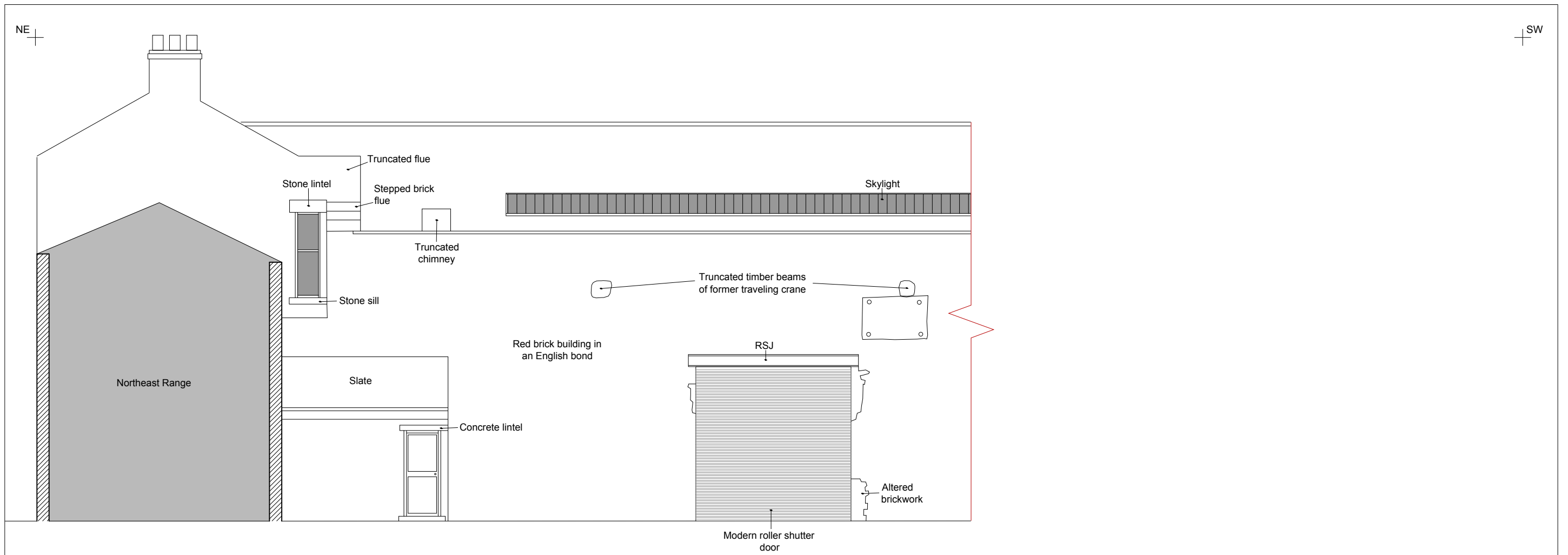
Figure 7

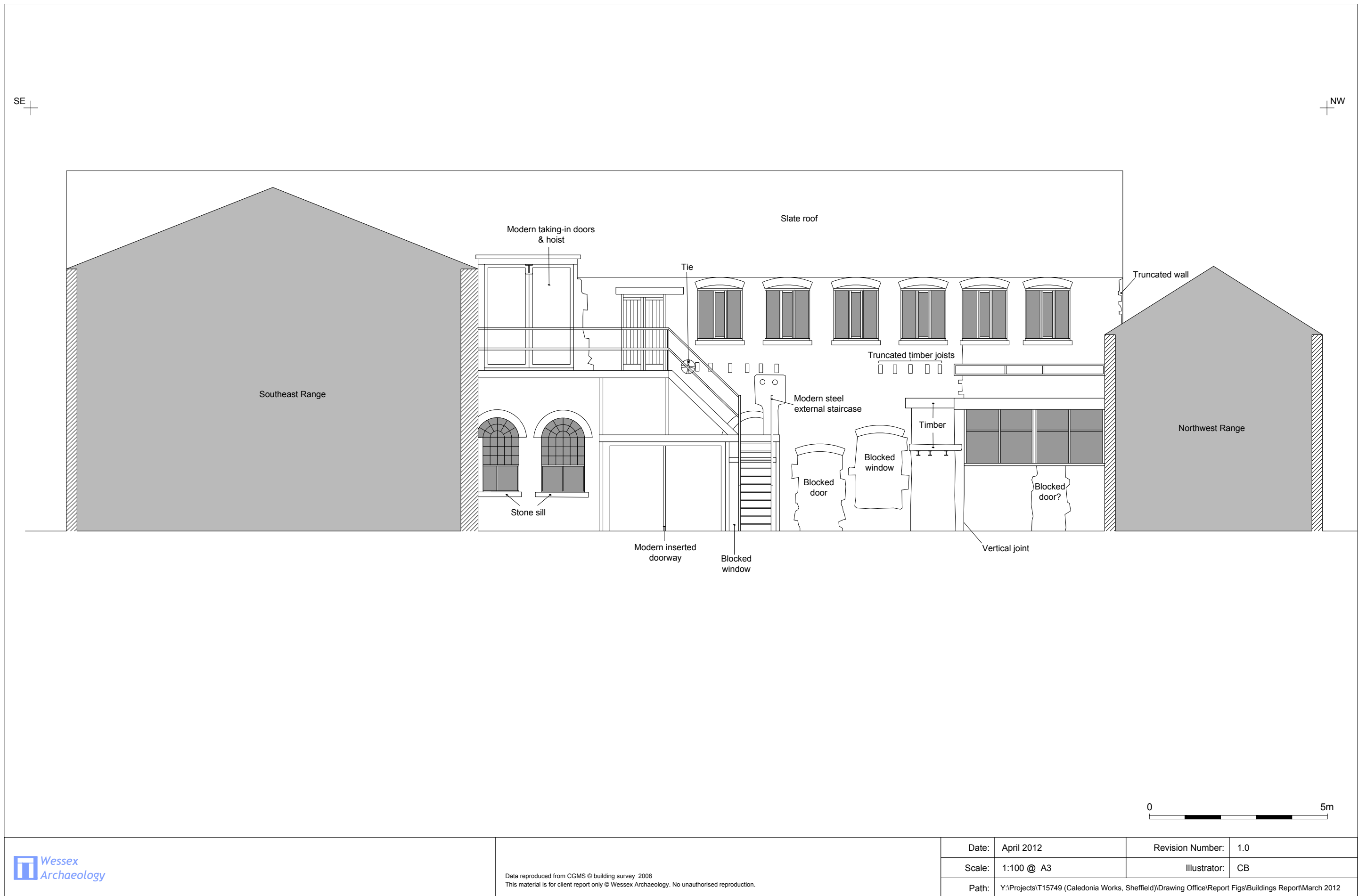


Date:	April 2012	Revision Number:	1.0
Scale:	1:100 @ A3	Illustrator:	CB
Path:	Y:\Projects\T15749 (Caledonia Works, Sheffield)\Drawing Office\Report Figs\Buildings Report\March 2012		

Elevation 2 - Southwest elevation of the Northeast range

Figure 8



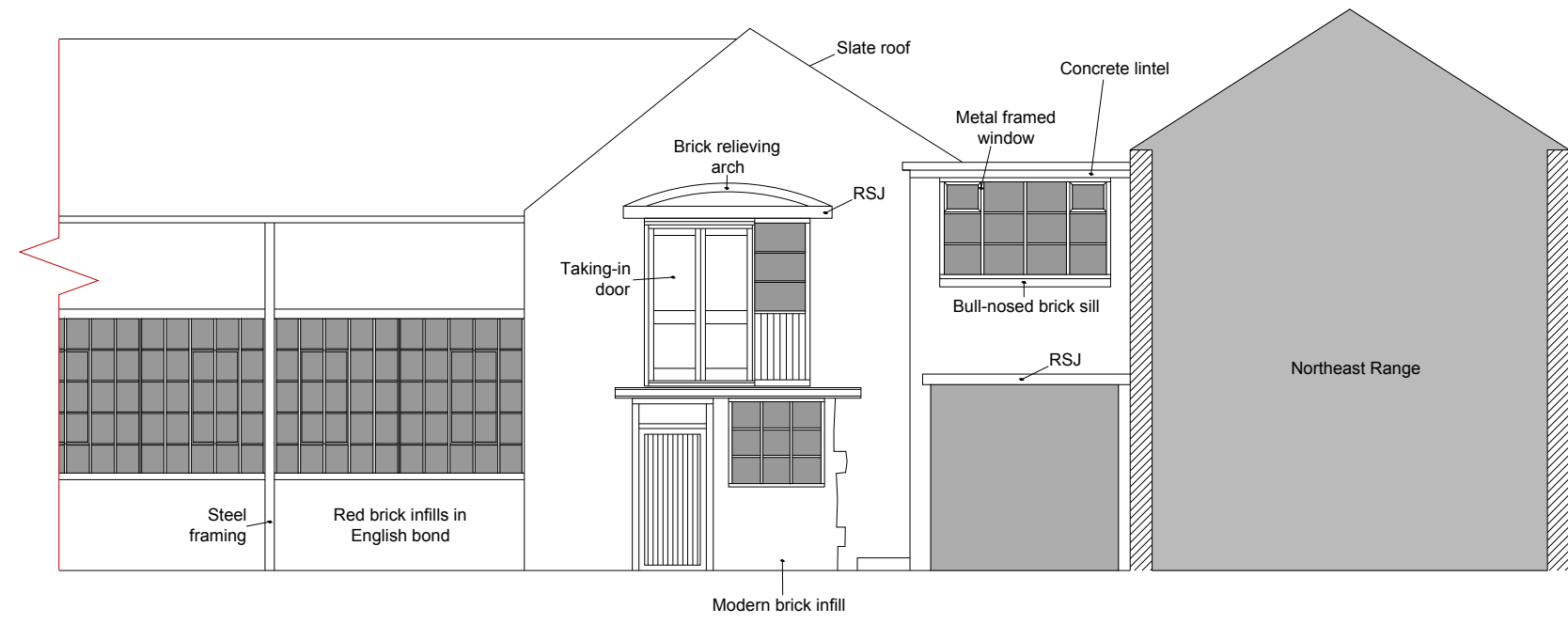
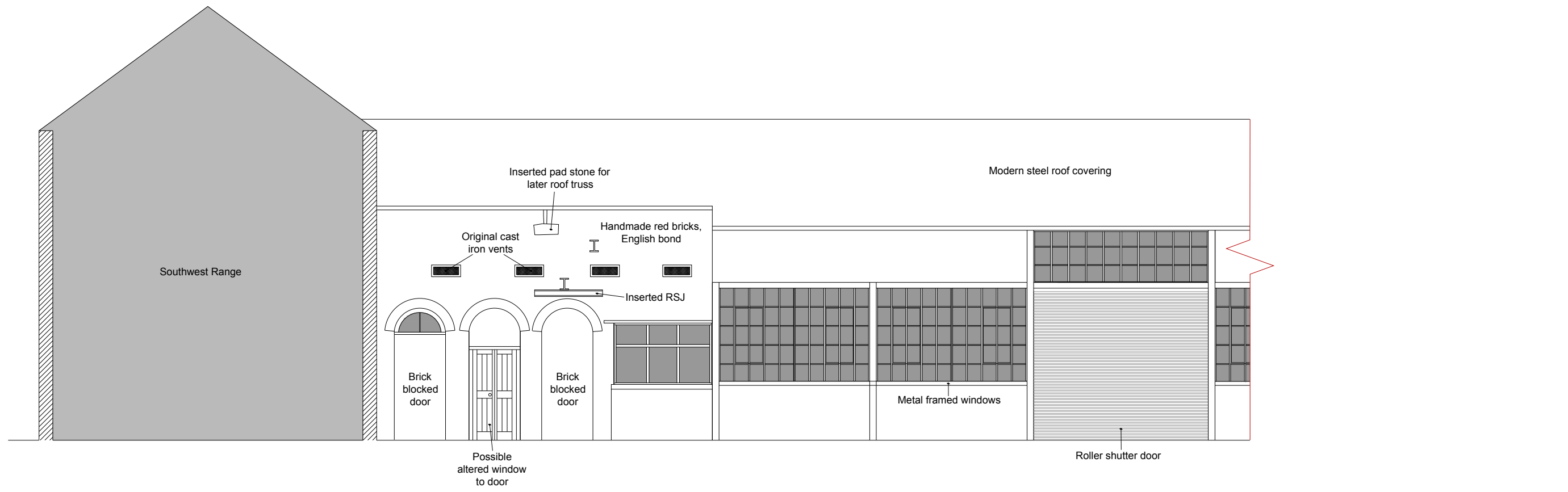


Elevation 4 - Northeast elevation of the Southwest range

Figure 10

SW

NE



Data reproduced from CGMS © building survey 2008
 This material is for client report only © Wessex Archaeology. No unauthorised reproduction.

Date:	April 2012	Revision Number:	1.0
Scale:	1:100 @ A3	Illustrator:	CB
Path:	Y:\Projects\T15749 (Caledonia Works, Sheffield)\Drawing Office\Report Figs\Buildings Report\March 2012		

Elevation 5 - Southeast elevation of the Northwest range

Figure 11



- Phase 1
- Phase 2
- Phase 3
- Phase 4
- Phase 5
- Phase 6
- Phase 7
- Phase 8
- Phase 9
- Phase 10
- Phase 11

Phased ground floor plan

Figure 12

Data reproduced from CGMS © building survey 2008
 This material is for client report only © Wessex Archaeology. No unauthorised reproduction.

Date:	April 2012	Revision Number:	1.0
Scale:	1:200 @ A3	Illustrator:	CB
Path:	Y:\Projects\T15749 (Caledonia Works, Sheffield)\Drawing Office\Report Figs\Buildings Report\March 2012		

W - Window
 D - Door
 BW - Blocked window
 BD - Blocked door
 D - Door
 FP - Fire place
 BFP - Blocked fire place





Phased first floor plan

Figure 13

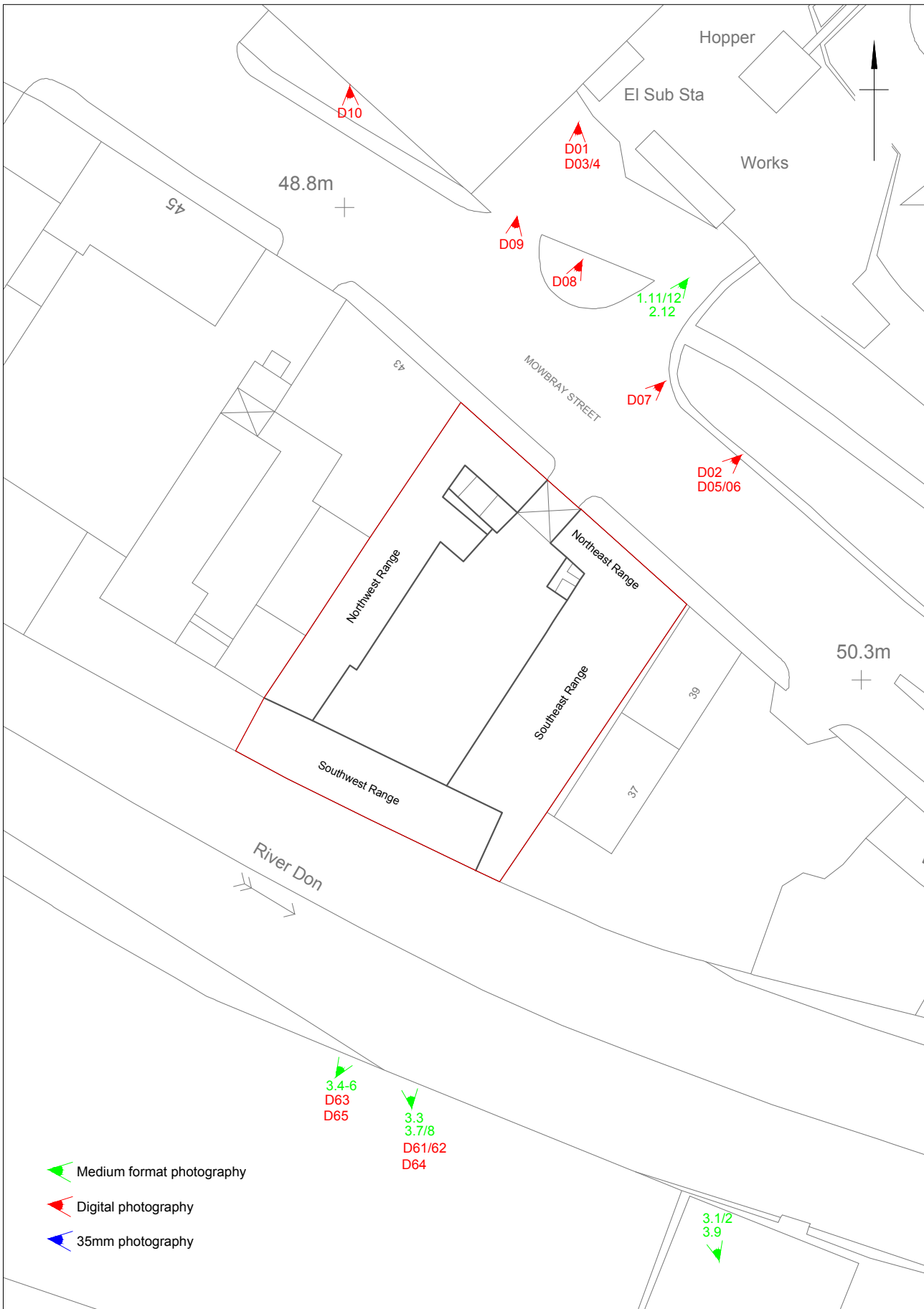
Data reproduced from CGMS © building survey 2008
 This material is for client report only © Wessex Archaeology. No unauthorised reproduction.

Date:	April 2012	Revision Number:	1.0
Scale:	1:200 @ A3	Illustrator:	CB
Path:	Y:\Projects\T15749 (Caledonia Works, Sheffield)\Drawing Office\Report Figs\Buildings Report\March 2012		

W - Window
 D - Door
 BW - Blocked window
 BD - Blocked door

D - Door
 FP - Fire place
 BFP - Blocked fire place





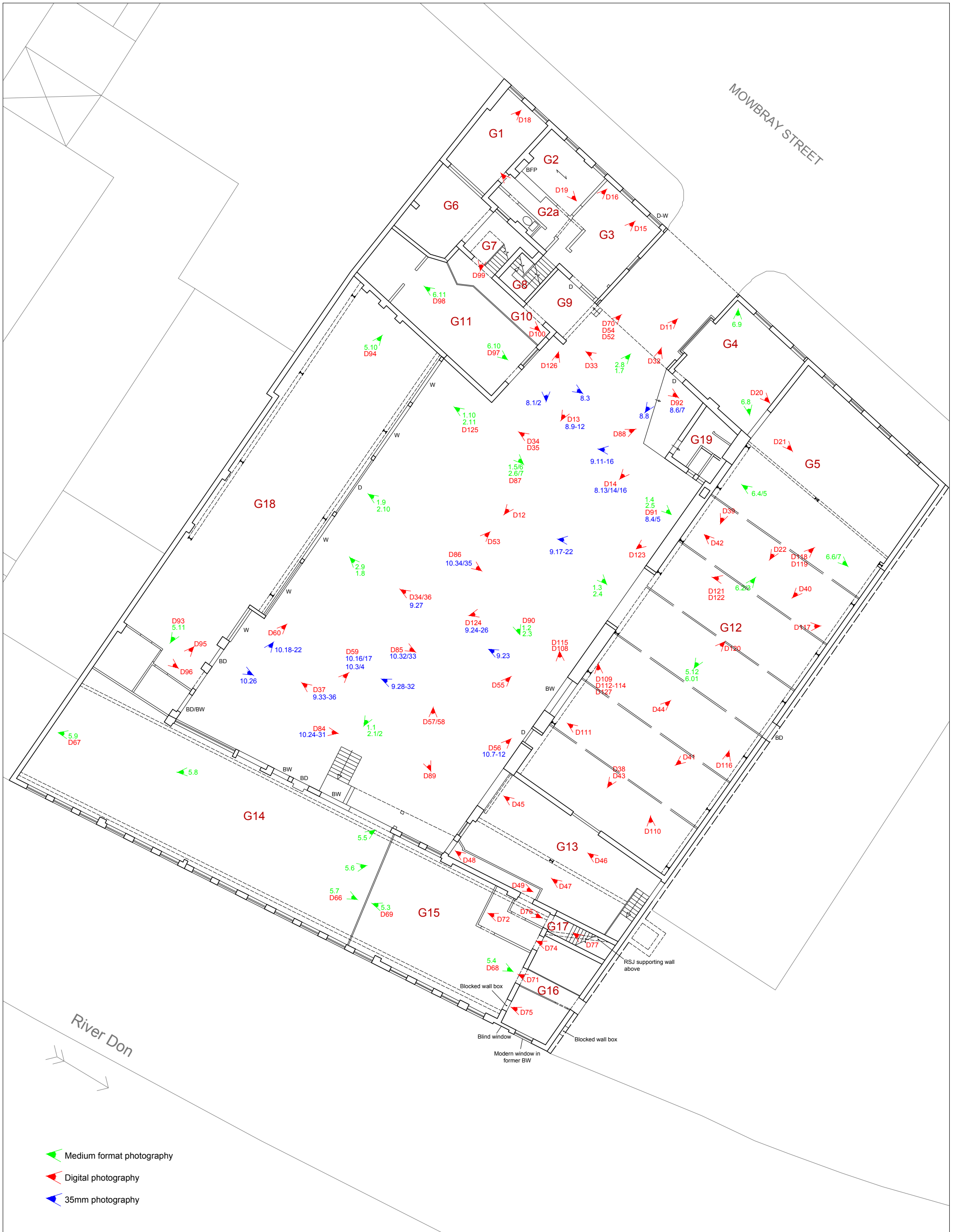
Digital data reproduced from Ordnance Survey data © Crown Copyright 2009 All rights reserved. Reference Number: 100020449.
 This material is for client report only © Wessex Archaeology. No unauthorised reproduction.

Date:	April 2011	Revision Number:	1.0
Scale:	n/a	Illustrator:	CB
Path:	Y:\Projects\T15749 (Caledonia Works, Sheffield)\Drawing Office\Report Figs\Buildings Report\March 2012		



External photo viewpoint plan

Figure 14



- Medium format photography
- Digital photography
- 35mm photography

Ground floor photo viewpoint plan

Figure 15

Data reproduced from CGMS © building survey 2008
 This material is for client report only © Wessex Archaeology. No unauthorised reproduction.

Date:	April 2012	Revision Number:	1.0
Scale:	n/a	Illustrator:	CB
Path:	Y:\Projects\T15749 (Caledonia Works, Sheffield)\Drawing Office\Report Figs\Buildings Report\March 2012		





First floor photo viewpoint plan

Figure 16

Data reproduced from CGMS © building survey 2008
 This material is for client report only © Wessex Archaeology. No unauthorised reproduction.

Date:	April 2012	Revision Number:	1.0
Scale:	n/a	Illustrator:	CB
Path:	Y:\Projects\T15749 (Caledonia Works, Sheffield)\Drawing Office\Report Figs\Buildings Report\March 2012		





Plate 1: General view of Caledonia Works from Mowbray Street (Film D.10)



Plate 2: General view of the principal facade of the Caledonia Works, fronting Mowbray Street (Film D.04)

This material is for client report only © Wessex Archaeology. No unauthorised reproduction.



Plate 3: View of the southeast end of the northeast elevation of the Northeast Range, fronting Mowbray Street (Film D.05)



Plate 4: General view of the southwest facing elevation of the Northeast Range, overlooking the central courtyard (Film D.12)

This material is for client report only © Wessex Archaeology. No unauthorised reproduction.

Date: 30.03.12

Revision Number: 0

Scale: N/A

Illustrator: L. Dawson

Path: S:\PROJECTS\84630 (Caledonia Works)\Reports\Plates\Plates 3-4.cdr



Plate 5: Detail view of the cart passage, southwest elevation of the Northeast Range (Film D.13)



Plate 6: General view of southwest elevation of the Northeast Range (Film D.14)

This material is for client report only © Wessex Archaeology. No unauthorised reproduction.

Date: 30.03.12

Revision Number: 0

Scale: N/A

Illustrator: L. Dawson

Path: S:\PROJECTS\84630 (Caledonia Works)\Reports\Plates\Plates 5-6.cdr



Plate 7: General view of G3 (Film D.15)



Plate 8: General view of G3, looking towards staircase G8 (Film D.16)



Plate 9: General view of G2a, showing former corridor & W.C partition locations (Film D.17)



Plate 10: General view of G2, showing blocked fireplace (Film D.19)

This material is for client report only © Wessex Archaeology. No unauthorised reproduction.

Date: 30.03.12

Revision Number: 0

Scale: N/A

Illustrator: L. Dawson

Path: S:\PROJECTS\84630 (Caledonia Works)\Reports\Plates\Plates 9-10.cdr



Plate 11: General view of G1, showing former opening within the southwest wall (Film D.18)



Plate 12: General view of G4 (Film D.20)

This material is for client report only © Wessex Archaeology. No unauthorised reproduction.



Plate 13: General view looking into G4 from G5 (Film D.21)



Plate 14: General view of G5 from G12 (Film D.22)

This material is for client report only © Wessex Archaeology. No unauthorised reproduction.



Plate 15: General view of F1 (Film D.23)



Plate 16: General view of F1, showing blocked opening & skylight (Film D.24)

This material is for client report only © Wessex Archaeology. No unauthorised reproduction.

Date: 30.03.12

Revision Number: 0

Scale: N/A

Illustrator: L. Dawson

Path: S:\PROJECTS\84630 (Caledonia Works)\Reports\Plates\Plates 15-16.cdr



Plate 17: General view of F2, showing joggled King-Post roof trusses (Film D.26)



Plate 18: General view of F3 (Film D.27)

This material is for client report only © Wessex Archaeology. No unauthorised reproduction.



Plate 19: General view of F4, showing flue & stairs to F5 (Film D.29)



Plate 20: General view of F5, showing fireplaces (Film D.30)

This material is for client report only © Wessex Archaeology. No unauthorised reproduction.

Date: 30.03.12

Revision Number: 0

Scale: N/A

Illustrator: L. Dawson

Path: S:\PROJECTS\84630 (Caledonia Works)\Reports\Plates\Plates 19-20.cdr



Plate 21: General view of F5, showing fireplace, and F6 beyond (Film D.31)



Plate 22: General view of the northwest elevation of the Southeast Range, from the cart passage (Film D.32)

This material is for client report only © Wessex Archaeology. No unauthorised reproduction.



Plate 23: General view of the northwest elevation of G19 (Film D.33)



Plate 24: General view of the northwest elevation of the Southeast Range, showing loading door, and two large truncated timber beams (Film D.34)

This material is for client report only © Wessex Archaeology. No unauthorised reproduction.

Date: 30.03.12

Revision Number: 0

Scale: N/A

Illustrator: L. Dawson

Path: S:\PROJECTS\84630 (Caledonia Works)\Reports\Plates\Plates 23-24.cdr



Plate 25: General view of the northwest elevation at the southwest end of the Southeast Range (Film D.37)



Plate 26: General view of G12 (Film D.38)

This material is for client report only © Wessex Archaeology. No unauthorised reproduction.

Date: 30.03.12

Revision Number: 0

Scale: N/A

Illustrator: L. Dawson

Path: S:\PROJECTS\84630 (Caledonia Works)\Reports\Plates\Plates 25-26.cdr



Plate 27: General view of G12, showing the southwest wall (Film D.44)



Plate 28: General view of the southeast wall of G12, showing blocked doorway (Film D.41)

This material is for client report only © Wessex Archaeology. No unauthorised reproduction.

Date: 30.03.12

Revision Number: 0

Scale: N/A

Illustrator: L. Dawson

Path: S:\PROJECTS\84630 (Caledonia Works)\Reports\Plates\Plates 27-28.cdr



Plate 29: General view the south corner of G12 during demolition, showing the change in fabric from stone to brick after the removal of the traveling crane (Film D.112)



Plate 30: Detail of the southeast wall of the Southeast Range, during demolition, showing the phase 1 stone wall of the Caledonia Works, and the later brick wall of the former adjacent works (Film D.116)



Plate 31: General view the northeast corner of the Southeast Range, showing the relationship with the Northeast Range (Film D.124)



Plate 32: Detail of the northwest wall of the Southeast Range, showing a flue, plus two truncated chimneys in the southwest gable of the Northeast Range (Film D.123)



Plate 33: General view of G13 (Film D.45)



Plate 34: General view of modern mezzanine above G13 (Film D.47)

This material is for client report only © Wessex Archaeology. No unauthorised reproduction.

Date: 30.03.12

Revision Number: 0

Scale: N/A

Illustrator: L. Dawson

Path: S:\PROJECTS\84630 (Caledonia Works)\Reports\Plates\Plates 33-34.cdr



Plate 35: General view of F16 (Film D.50)



Plate 36: General view of F16 (Film D.51)

This material is for client report only © Wessex Archaeology. No unauthorised reproduction.



Plate 37: General view of the northeast elevation of the Southwest Range (Film D.53)



Plate 38: General view of the southwest elevation of the Southwest Range (Film D.61)

This material is for client report only © Wessex Archaeology. No unauthorised reproduction.

Date: 30.03.12

Revision Number: 0

Scale: N/A

Illustrator: L. Dawson

Path: S:\PROJECTS\84630 (Caledonia Works)\Reports\Plates\Plates 37-38.cdr



Plate 39: View of the southeast corner of the Southwest Range, showing doorway and possible blocked wall box in the southeast elevation - formerly Times Steel Works (Film D.62)



Plate 40: General view of G14 (Film D.66)

This material is for client report only © Wessex Archaeology. No unauthorised reproduction.



Plate 41: General view of G14 (Film D.67)



Plate 42: General view of G15 (Film D.68)

This material is for client report only © Wessex Archaeology. No unauthorised reproduction.



Plate 43: General view of G15, showing possible high blocked wall box within the southeast wall (Film D.69)



Plate 44: General view of modern corridor inserted into G16, with doorway leading to the former adjacent site (Film D.71)

This material is for client report only © Wessex Archaeology. No unauthorised reproduction.



Plate 45: General view of inserted modern room with G16 (Film D.74)



Plate 46: General view of modern inserted room within G16 (Film D.75)

This material is for client report only © Wessex Archaeology. No unauthorised reproduction.

Date: 30.03.12

Revision Number: 0

Scale: N/A

Illustrator: L. Dawson

Path: S:\PROJECTS\84630 (Caledonia Works)\Reports\Plates\Plates 45-46.cdr



Plate 47: General view up staircase G17 (Film D.77)



Plate 48: General view of staircase F15 & roof void F14 (Film D.78)

This material is for client report only © Wessex Archaeology. No unauthorised reproduction.

Date: 30.03.12

Revision Number: 0

Scale: N/A

Illustrator: L. Dawson

Path: S:\PROJECTS\84630 (Caledonia Works)\Reports\Plates\Plates 47-48.cdr



Plate 49: General view of F11 (Film D.81)



Plate 50: General view of F11 (Film D.82)

This material is for client report only © Wessex Archaeology. No unauthorised reproduction.



Plate 51: General view of F11a, showing blocked windows within the southeast wall (Film D.81)



Plate 52: General view of F12 (Film D.79)

This material is for client report only © Wessex Archaeology. No unauthorised reproduction.



Plate 53: General view of F12 (Film D.80)



Plate 54: General view of the southeast elevation of the Northwest Range (Film D.88)

This material is for client report only © Wessex Archaeology. No unauthorised reproduction.



Plate 55: View of the southwest end of the southeast elevation of the Northwest Range, showing blocked arched openings and cast iron vents (Film D.84)



Plate 56: General view of the northeast end of the southeast elevation of the Northwest Range, showing the join with the Northeast Range (Film D.89)

This material is for client report only © Wessex Archaeology. No unauthorised reproduction.

Date: 30.03.12

Revision Number: 0

Scale: N/A

Illustrator: L. Dawson

Path: S:\PROJECTS\84630 (Caledonia Works)\Reports\Plates\Plates 55-56.cdr



Plate 57: General view the southeast elevation of the Northwest Range - northeast end (Film D.91)



Plate 58: General view of the southeast elevation of the Northwest Range - northeast end, showing G9 (Film D.92)



Plate 59: General view of G18 (Film D.93)



Plate 60: General view of G18 (Film D.94)

This material is for client report only © Wessex Archaeology. No unauthorised reproduction.

Date: 30.03.12

Revision Number: 0

Scale: N/A

Illustrator: L. Dawson

Path: S:\PROJECTS\84630 (Caledonia Works)\Reports\Plates\Plates 59-60.cdr



Plate 61: General view of G11 (Film D.97)



Plate 62: General view of G11 (Film D.98)

This material is for client report only © Wessex Archaeology. No unauthorised reproduction.

Date: 30.03.12

Revision Number: 0

Scale: N/A

Illustrator: L. Dawson

Path: S:\PROJECTS\84630 (Caledonia Works)\Reports\Plates\Plates 61-62.cdr



Plate 63: General view along corridor G10 (Film D.100)



Plate 64: General view of external staircase G7 (Film D.99)



Plate 65: General view of G6 (Film D.101)



Plate 66: General view of entrance to F7 from external staircase (Film D.102)

This material is for client report only © Wessex Archaeology. No unauthorised reproduction.

Date: 30.03.12

Revision Number: 0

Scale: N/A

Illustrator: L. Dawson

Path: S:\PROJECTS\84630 (Caledonia Works)\Reports\Plates\Plates 65-66.cdr



Plate 67: General view of F7 (Film D.104)



Plate 68: General view of entrance to F10 from external staircase (Film D.103)

This material is for client report only © Wessex Archaeology. No unauthorised reproduction.

Date: 30.03.12

Revision Number: 0

Scale: N/A

Illustrator: L. Dawson

Path: S:\PROJECTS\84630 (Caledonia Works)\Reports\Plates\Plates 67-68.cdr



Plate 69: General view of F10 (Film D.105)



Plate 70: General view of F9 (Film D.107)

This material is for client report only © Wessex Archaeology. No unauthorised reproduction.

Date: 30.03.12

Revision Number: 0

Scale: N/A

Illustrator: L. Dawson

Path: S:\PROJECTS\84630 (Caledonia Works)\Reports\Plates\Plates 69-70.cdr



WESSEX ARCHAEOLOGY LIMITED.

Registered Head Office: Portway House, Old Sarum Park, Salisbury, Wiltshire SP4 6EB.

Tel: 01722 326867 Fax: 01722 337562 info@wessexarch.co.uk

Regional offices in **Edinburgh, Rochester and Sheffield**

For more information visit www.wessexarch.co.uk

