



451-453 BARKING ROAD, EAST HAM E6, LONDON BOROUGH OF NEWHAM

Archaeological Evaluation Report



**451-453 BARKING ROAD, EAST HAM, E6
LONDON BOROUGH OF NEWHAM**

REPORT ON ARCHAEOLOGICAL EVALUATION

Prepared for
Metroman Ltd,
41 Windsor Road
Forest Gate
London E7 0QX

by

Wessex Archaeology in London
Unit 113
The Chandlery,
50 Westminster Bridge Road
London
SE1 7QY

**Museum of London Site Code
BKX06**

63850.02

August 2006

**451-453 BARKING ROAD, EAST HAM, E6
LONDON BOROUGH OF NEWHAM**

REPORT ON ARCHAEOLOGICAL EVALUATION

Table of Contents

Table of Contents.....	i
Summary.....	ii
Acknowledgements.....	iii
1 INTRODUCTION.....	1
1.1 SCOPE OF DOCUMENT	1
1.2 PLANNING BACKGROUND.....	1
2 SITE GEOLOGY AND TOPOGRAPHY.....	1
2.1 GEOLOGY.....	1
2.2 TOPOGRAPHY & USE	1
3 ARCHAEOLOGICAL AND HISTORICAL BACKGROUND.....	2
3.1 AREA OF ARCHAEOLOGICAL PRIORITY	2
4 EVALUATION STRATEGY AND METHODOLOGY.....	2
4.1 METHODOLOGICAL STANDARDS	2
4.2 HEALTH AND SAFETY	2
4.3 FIELDWORK	2
5 RESULTS.....	2
6 CONCLUSION	3
7 ARCHIVE.....	3
8 BIBLIOGRAPHY.....	3
APPENDIX 1: TRENCH SUMMARY	4
APPENDIX 2: OASIS FORM.....	5

Figures

Figure 1. Site Location Map Showing Location of Evaluation Trench

**451-453 BARKING ROAD, EAST HAM, E6
LONDON BOROUGH OF NEWHAM**

REPORT ON ARCHAEOLOGICAL EVALUATION

Summary

Wessex Archaeology was commissioned to undertake an archaeological evaluation of land at 451-453 Barking Road in the London Borough of Newham. A single trench was excavated. No archaeological remains were present as a result of extensive modern disturbance.

**451-453 BARKING ROAD, EAST HAM, E6
LONDON BOROUGH OF NEWHAM**

REPORT ON ARCHAEOLOGICAL EVALUATION

Acknowledgements

Wessex Archaeology would like to thank Raj and Bira Sanger of Metroman Ltd for commissioning the work, and also to thank David Divers of Greater London Archaeological Advisory Service (GLAAS) for monitoring the works. The project was managed for Wessex Archaeology by Peter Reeves. Cornelius Barton conducted the fieldwork and compiled this report, with illustrations by Mark Roughley.

**451-453 BARKING ROAD, EAST HAM, E6
LONDON BOROUGH OF NEWHAM**

SPECIFICATION FOR AN ARCHAEOLOGICAL EVALUATION

1 INTRODUCTION

1.1 Scope of Document

1.1.1 Wessex Archaeology was commissioned by Metroman Ltd (the Client) to undertake an archaeological evaluation at 451-453 Barking Road, East Ham, E6 in the London Borough of Newham (the Site), centred on NGR 542815, 183655 (**Figure 1**). This document sets out the results of the evaluation.

1.2 Planning Background

1.2.1 A planning application has been approved for the development of the Site, with the erection of residential flats. As part of the conditions, further information was requested by the Local Planning Authority on the survival of any archaeological deposits within the Site.

1.2.2 It was determined in consultation with David Divers, English Heritage Archaeological Advisor to the London Borough of Newham, that an archaeological evaluation of the Site was appropriate.

2 SITE GEOLOGY AND TOPOGRAPHY

2.1 Geology

2.1.1 The underlying geology of the area comprises Flood Plain Gravel terraces of the Thames and Roding (British Geological Society Drift Edition, Sheet 257).

2.2 Topography & Use

2.2.1 The modern ground level within the site is approximately 10m above Ordnance Datum (aOD).

2.2.2 The Site is a disused petrol filling station with much of the southern area having been occupied with holding tanks for fuel. It is directly north of Barking Road, some 400m northeast of the core of the historic village of East Ham.

2.2.3 The fuel tanks have been removed from the site. Records of this, provided by the client, clearly show only the northern half of the site had any form of archaeological potential.

3 ARCHAEOLOGICAL AND HISTORICAL BACKGROUND

3.1 Area of Archaeological Priority

- 3.1.1 The Site is defined within the London Borough of Newham Unitary Development Plan (adopted June 2001) as being within an Area of Archaeological Priority. The area is presumed to contain evidence of medieval activity given that Barking Road overlies the route of the medieval road that would have linked East Ham to Barking Abbey.
- 3.1.2 No known archaeological deposits or finds have been recorded from the Site prior to the evaluation.

4 EVALUATION STRATEGY AND METHODOLOGY

4.1 Methodological Standards

- 4.1.1 All work was undertaken in compliance with the standards outlined in the Institute of Field Archaeologist's *Standard and Guidance for Archaeological Evaluations* (2001).

4.2 Health and Safety

- 4.2.1 All work was undertaken in accordance with the Health and Safety at Work Act 1974 and the Management of Health and Safety Regulations 1992, and all other relevant Health and Safety legislation, regulations and codes of practice in force. A risk assessment was prepared and all site staff were required to read and sign it before works commenced.

4.3 Fieldwork

- 4.3.1 Fieldwork methodology was agreed in advance with David Divers of GLAAS and a Written Scheme of Investigation was produced (Wessex Archaeology 2006). The evaluation was undertaken by means of a single trench measuring 10m by 2m (see **Figure 1**). This was excavated by a mechanical excavator under the supervision of an archaeologist.
- 4.3.3 A complete drawn and written record of excavated deposits was compiled. This included a plan drawn at 1:100 and a sample section at 1:10.
- 4.3.4 A full photographic record was maintained using both colour transparencies and black and white negatives (on 35mm film). A digital photographic record of the work was also maintained.

5 RESULTS

- 5.1.1 No archaeological deposits or artefacts were present. The trench was dug to a depth of 2.8m, at which point the observed deposits were all made ground of late 20th century origin. These deposits, which consisted mainly of redeposited gravel mixed with building rubble, were probably used to backfill the space left by removal of old petrol tanks predating those mentioned in 2.2.3 above.

6 CONCLUSION

- 6.1.1 It appears that successive phases of development on the Site associated with previous use have truncated the area to such an extent that no archaeological remains survive, if any originally existed.

7 ARCHIVE

- 7.1 The completed project archive will be prepared in accordance with the guidelines outlined in Appendix 3 of Management of Archaeological Projects (English Heritage 1991) and in accordance with the Guidelines for the preparation of excavation archives for long term storage (UKIC 1990). The archive from the project will be deposited with the Museum of London under MOL Site Code: BKX06.

8 BIBLIOGRAPHY

English Heritage 1991 *Management of Archaeological Projects*

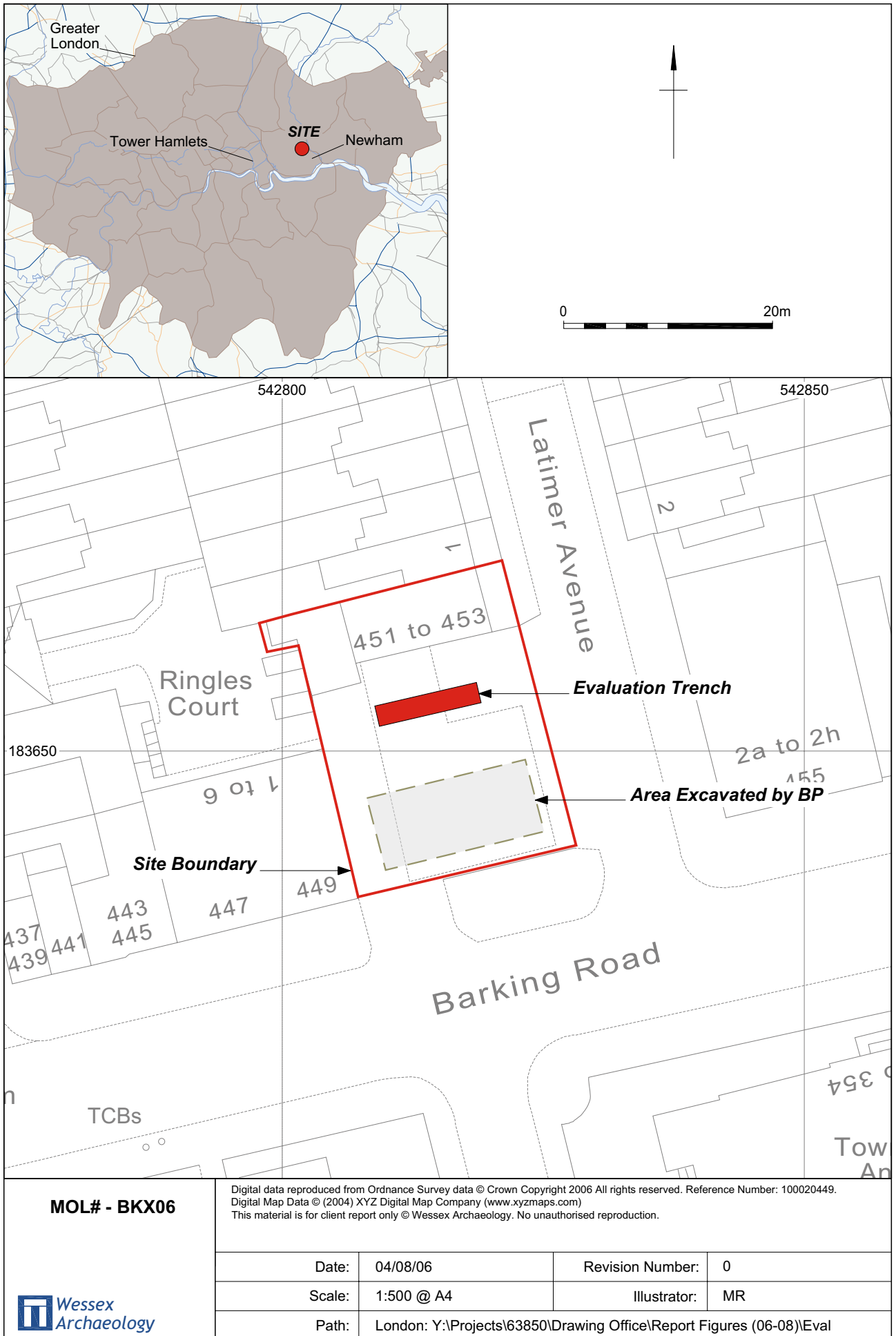
London Borough of Newham Unitary Development Plan (adopted June 2001)
<http://www.newham.gov.uk/NR/rdonlyres/20C26A87-34EB-4C34-8254-D73A1ADE46D2/0/UDP3EnvironmentQuality.pdf>

Wessex Archaeology 2006 451-453 *Barking Road, Stratford, London Borough of Newham: Specification for an Archaeological Evaluation*

APPENDIX 1: TRENCH SUMMARY

Trench 1		
Length: 10m	Width: 2m	Depth: 2.85m
Context Number	Description	Depth
101	Made ground deposit- mixed clay and gravel with building rubble	0-1.0m
102	Cut for petrol tank	1-2.80m
103	Mixed clay and gravel- backfill of 102	1-2.80m
104	Redeposited clay with gravel and building rubble- made ground	0.80- 1.10m

APPENDIX 2: OASIS FORM



Site location map showing the Site Boundary and Trench Location

Figure 1



THE TRUST FOR WESSEX ARCHAEOLOGY LTD.

Head Office: Portway House, Old Sarum Park, Salisbury, Wiltshire SP4 6EB.

Tel: 01722 326867 Fax: 01722 337562 info@wessexarch.co.uk www.wessexarch.co.uk

London Office: Unit 113, The Chandlery, 50 Westminster Bridge Road, London SE1 7QY.

Tel: 020 7953 7494 Fax: 020 7953 7499 london-info@wessexarch.co.uk www.wessexarch.co.uk

