



## Penniment Farm, Abbott Road, Mansfield, Nottinghamshire

### Archaeological Test Pitting





**PENNIMENT FARM, ABBOTT ROAD,  
MANSFIELD, NOTTINGHAMSHIRE**

**Archaeological Test Pitting**

Prepared for:  
**CgMs Consulting Ltd**  
Newark Beacon  
Beacon Hill Office Park  
Cafferata Way  
Newark  
Notts  
NG24 2TN

by  
**Wessex Archaeology**  
Unit 6, Riverside Block  
Sheaf Bank Business Park  
SHEFFIELD  
South Yorkshire  
S2 3EN

Report reference: 84100.01  
Path: s:\projects\84100 (penniment farm)\test pitting report.doc

**February 2012**


*© Wessex Archaeology Limited 2012 all rights reserved  
Wessex Archaeology Limited is a Registered Charity No. 287786*

### DISCLAIMER

THE MATERIAL CONTAINED IN THIS REPORT WAS DESIGNED AS AN INTEGRAL PART OF A REPORT TO AN INDIVIDUAL CLIENT AND WAS PREPARED SOLELY FOR THE BENEFIT OF THAT CLIENT. THE MATERIAL CONTAINED IN THIS REPORT DOES NOT NECESSARILY STAND ON ITS OWN AND IS NOT INTENDED TO NOR SHOULD IT BE RELIED UPON BY ANY THIRD PARTY. TO THE FULLEST EXTENT PERMITTED BY LAW WESSEX ARCHAEOLOGY WILL NOT BE LIABLE BY REASON OF BREACH OF CONTRACT NEGLIGENCE OR OTHERWISE FOR ANY LOSS OR DAMAGE (WHETHER DIRECT INDIRECT OR CONSEQUENTIAL) OCCASIONED TO ANY PERSON ACTING OR OMITTING TO ACT OR REFRAINING FROM ACTING IN RELIANCE UPON THE MATERIAL CONTAINED IN THIS REPORT ARISING FROM OR CONNECTED WITH ANY ERROR OR OMISSION IN THE MATERIAL CONTAINED IN THE REPORT. LOSS OR DAMAGE AS REFERRED TO ABOVE SHALL BE DEEMED TO INCLUDE, BUT IS NOT LIMITED TO, ANY LOSS OF PROFITS OR ANTICIPATED PROFITS DAMAGE TO REPUTATION OR GOODWILL LOSS OF BUSINESS OR ANTICIPATED BUSINESS DAMAGES COSTS EXPENSES INCURRED OR PAYABLE TO ANY THIRD PARTY (IN ALL CASES WHETHER DIRECT INDIRECT OR CONSEQUENTIAL) OR ANY OTHER DIRECT INDIRECT OR CONSEQUENTIAL LOSS OR DAMAGE

### QUALITY ASSURANCE

SITE CODE	<b>84100</b>	ACCESSION CODE		CLIENT CODE	
PLANNING APPLICATION REF.	<b>1998/695/WT</b>	NGR		<b>SK 515 619</b>	

VERSION	STATUS*	PREPARED BY	APPROVED BY	APPROVER'S SIGNATURE	DATE	FILE
1	E	MH	APN		20/02/12	S:\PROJECTS\84100 (PENNIMENT FARM)\REPORTS

\* I= INTERNAL DRAFT E= EXTERNAL DRAFT F= FINAL,

**PENNIMENT FARM, ABBOTT ROAD,  
MANSFIELD, NOTTINGHAMSHIRE****Archaeological Test Pitting****Contents**

Summary.....	v
Acknowledgements.....	vi
<b>1 INTRODUCTION.....</b>	<b>1</b>
1.1 Project Background.....	1
1.2 The Site, Location and Geology.....	1
<b>2 ARCHAEOLOGICAL AND HISTORICAL BACKGROUND.....</b>	<b>1</b>
2.1 General.....	1
2.2 Prehistoric.....	1
2.3 Medieval.....	1
2.4 Post-Medieval.....	2
<b>3 AIMS AND SCOPE OF WORK.....</b>	<b>2</b>
3.1 Specific.....	2
3.2 General.....	2
<b>4 METHODOLOGY.....</b>	<b>2</b>
4.1 General.....	2
4.2 Recording.....	3
4.3 Finds.....	3
<b>5 TEST PITTING RESULTS.....</b>	<b>3</b>
5.1 General.....	3
5.2 Area 1 (Test Pits 1-8).....	3
5.3 Area 2 (Test Pits 9-12).....	3
5.4 Area 3 (Test Pits 13-16).....	3
5.5 Area 4 (Test Pits 17-20).....	3
<b>6 FINDS.....</b>	<b>4</b>
6.1 Introduction.....	4
6.2 Pottery.....	4
6.3 Ceramic Building Material (CBM).....	4
6.4 Glass.....	4
6.5 Other Finds.....	4
6.6 Potential and Further Recommendations.....	4
<b>7 DISCUSSION.....</b>	<b>4</b>
7.1 Summary.....	4
7.2 Conclusions.....	5
<b>8 ARCHIVE AND COPYRIGHT.....</b>	<b>5</b>
8.1 Archive.....	5
8.2 Copyright.....	5
<b>9 REFERENCES.....</b>	<b>6</b>
<b>APPENDIX 1: TEST PIT DESCRIPTIONS.....</b>	<b>7</b>
<b>APPENDIX 2: FINDS.....</b>	<b>14</b>

## **Figures**

- Figure 1** Site location  
**Figure 2** Sample sections: Areas 1 and 2  
**Figure 3** Sample sections: Areas 3 and 4

## **Tables**

- Table 1** All finds by context (number / weight in grammes)

---

**PENNIMENT FARM, ABBOTT ROAD,  
MANSFIELD, NOTTINGHAMSHIRE**

**Archaeological Test Pitting**

**Summary**

Wessex Archaeology was commissioned by CgMs Consulting Ltd to carry out a test pitting exercise at Penniment Farm, Abbott Road, Mansfield, Notts (hereafter the 'Site'; NGR SK 515 619) in advance of the proposed residential and commercial development of the Site.

Test pits were located in areas where isolated worked flints were recovered during an earlier field walking exercise (APS 2011). In total 20 test pits were excavated with all excavated spoil being sieved before backfilling. No archaeological features were uncovered and no flint artefacts were found within the test pits, however, an undiagnostic worked flint flake was recovered from the ground surface c. 63m east-south-east of Test Pit 15. It seems likely that the flint finds recovered from the earlier fieldwalking were part of a very low density background spread of prehistoric evidence.

Forty sherds of pottery were recovered from the sieved soil, of which one sherd dated to the 13<sup>th</sup> or 14<sup>th</sup> century. The remaining sherds span the 18<sup>th</sup> to 20<sup>th</sup> centuries, although some coarse redwares could potentially be earlier. Post-medieval ceramic building material, slag, metalwork, glass and clay tobacco pipe fragments were also recovered. All this material is likely to have been imported during the manuring of the site.

The archive is currently held at Wessex Archaeology's Sheffield office and will be deposited with Mansfield Museum in due course, under an accession number that is yet to be confirmed. The finds assemblage will be discarded.

**PENNIMENT FARM, ABBOTT ROAD,  
MANSFIELD, NOTTINGHAMSHIRE**

**Archaeological Test Pitting**

**Acknowledgements**

This project was commissioned by CgMs Consulting Ltd and Wessex Archaeology is grateful to Paul Gajos in this regard. The report was compiled by Michael Hartwell. The project was managed for Wessex Archaeology by Andrew Norton. Fieldwork was undertaken between 30<sup>th</sup> January and 3<sup>rd</sup> February 2012 by Michael Hartwell, Sam Fairhead and James Thomson. The finds were assessed by Lorraine Mephram and the illustrations produced by Chris Swales.

**PENNIMENT FARM, ABBOTT ROAD,  
MANSFIELD, NOTTINGHAMSHIRE****Archaeological Test Pitting****1 INTRODUCTION****1.1 Project Background**

1.1.1 Wessex Archaeology was commissioned by CgMs Consulting Ltd to carry out a test pitting exercise at Penniment Farm, Abbott Road, Mansfield, Notts (hereafter the 'Site'; NGR SK 515 619) in advance of the proposed development of the site (residential and commercial).

1.1.2 The site is located within an area of archaeological potential and following a programme of fieldwalking (APS 2011), and discussions between CgMs and Nottinghamshire County Council, Wessex Archaeology produced a Written Scheme of Investigation (WSI; 2012) outlining the methodology for a test pitting exercise. The work was in accordance with PPS5, the East Midlands Regional Plan, the Mansfield District Local Plan and outline planning permission granted in 1998 (1998/695/WT; **Figure 1**).

**1.2 The Site, Location and Geology**

1.2.1 The site comprises former agricultural land and is 34ha in area. It is bounded by Abbott Road to the east, Water Lane to the north and the A617 to the west.

1.2.2 The site lies on Dolostone of the Cadeby Formation with overlying Mid Pleistocene Till (Diamicton) and glaciofluvial sand and gravel to the south ([http://maps.bgs.ac.uk/geologyviewer\\_google/googleviewer.html](http://maps.bgs.ac.uk/geologyviewer_google/googleviewer.html)). The site generally lies at 140m OD, but the southern part of site slopes up to 155m OD at Penniment Lane.

**2 ARCHAEOLOGICAL AND HISTORICAL BACKGROUND****2.1 General**

2.1.1 The archaeological background of the site is detailed in a desk based assessment (CgMs 2010) and is summarised below. Fieldwalking in 2011 revealed isolated prehistoric flints, a single sherd of medieval pottery and low levels of post-medieval artefacts associated with manuring (APS 2011).

**2.2 Prehistoric**

2.2.1 Flint scatters were identified on the route of the A617 in 1996, and also within the proposed development site during fieldwalking by the Sherwood Archaeological Society in the 1970s.

**2.3 Medieval**

2.3.1 Mansfield is recorded as *Mamesfelde* in Domesday and was recorded as a royal manor. The proposed development site lies within the ancient boundaries of Sherwood Forest, which became a royal hunting forest after 1066.



## **2.4 Post-Medieval**

- 2.4.1 Following the development of an improved infrastructure system in the 18<sup>th</sup> century the site was used for coal mining, with bell pits or shafts identified from aerial photographs.

## **3 AIMS AND SCOPE OF WORK**

### **3.1 Specific**

- 3.1.1 The archaeological test pitting sought to establish whether the isolated flint flakes recovered from field walking were part of larger spreads, and indicative of in situ flint working.

### **3.2 General**

- 3.2.1 The general aims of the work were:
- To identify and record any archaeological features exposed during test pitting.
  - To recover any artefact evidence during test pitting.
  - To make available the results of the investigation.

## **4 METHODOLOGY**

### **4.1 General**

- 4.1.1 The methodology employed for the evaluation trenching programme was fully outlined in the written scheme of investigation (WSI; Wessex Archaeology 2012). A basic summary is outlined below.
- 4.1.2 Prior to any mechanical excavation each test pit was scanned with a CAT to check for uncharted services.
- 4.1.3 Topsoil or overburden was removed using a mechanical excavator (JCB 3CX) fitted with a toothless ditching bucket, working under the continuous direct supervision of a suitably experienced archaeologist. Topsoil/overburden was removed in a series of level spits (100mm) down to the level of the natural geology.
- 4.1.4 Each machine excavated 100mm spit, was sieved through a 10mm mesh. All finds from each spit were recovered and bagged by context.
- 4.1.5 All aspects of the programme were carried out in accordance with all relevant Institute for Archaeologists (IfA) Code of Conduct (IfA 2008a and b), and Standard and Guidance, and the local and regional frameworks.

## 4.2 Recording

- 4.2.1 Deposits and depositional sequences in the trenches were recorded on the Wessex Archaeology pro-forma trench record sheets and photographed. Representative sections were photographed, levelled and drawn to scale.

## 4.3 Finds

- 4.3.1 All artefacts from excavated contexts were retained, and processed in line with current industry guidelines (English Heritage 2005, 2006a and IfA 2008b) and examined by an appropriate artefact specialist.

## 5 TEST PITTING RESULTS

### 5.1 General

- 5.1.1 Twenty test pits were excavated in three fields with no archaeological features uncovered. For the purposes of reporting the site was divided into four areas, and summaries of the encountered soils within those four areas can be found below. For full trench descriptions see **Appendix 1**.

### 5.2 Area 1 (Test Pits 1-8)

- 5.2.1 Red brown silty clay natural was revealed across the area, and was overlain by light orange brown colluvium/subsoil. The colluvium was not a uniform depth, being 0.1m deep in Test Pits 3, 5, 6 and 7 and 0.2m deep in Test Pits 1, 2, 4 and 8. The deposit was overlain by 0.3m of topsoil (**Figure 2**).

### 5.3 Area 2 (Test Pits 9-12)

- 5.3.1 Red silty clay natural was revealed across the area and was overlain by light orange brown silty clay colluvium. The colluvium was not a uniform depth being 0.2m thick in Test Pits 9-11 and absent in Test Pit 12. The deposit was overlain by 0.3m of topsoil (**Figure 2**).

### 5.4 Area 3 (Test Pits 13-16)

- 5.4.1 Within Area 3 natural geology comprised a mid yellow brown sandy clay. The geology was overlain by 0.3m-0.4m of topsoil, with no subsoil present (**Figure 3**).
- 5.4.2 The only piece of worked flint found during works on site was found on the current ground surface, 63m east-south-east of Test Pit 15.

### 5.5 Area 4 (Test Pits 17-20)

- 5.5.1 Light brown yellow sandy clay natural was revealed across the area and was overlain by 0.3m-0.5m of topsoil with no subsoil present (**Figure 3**).
- 5.5.2 A modern ceramic field drain was revealed within Test Pit 17 at the interface between topsoil and natural.

## **6 FINDS**

### **6.1 Introduction**

6.1.1 The evaluation produced a small finds assemblage, almost entirely of post-medieval/modern date, and in a restricted range of material types (see **Appendix 2; Table 1**). All finds came from either the topsoil or a relic plough soil.

### **6.2 Pottery**

6.2.1 Pottery comprises the most closely datable material. Of the 40 sherds recovered, one has been identified as medieval; this is an abraded body sherd in an oxidised sandy fabric, probably of 13<sup>th</sup> or 14<sup>th</sup> century date. The remaining sherds comprise coarse redwares, salt-glazed stonewares (probably all from Midlands sources), and modern refined wares (creamware, pearlware, etc). The date range is likely to span the 18<sup>th</sup> to 20<sup>th</sup> centuries, although some of the coarse redwares could potentially be earlier.

### **6.3 Ceramic Building Material (CBM)**

6.3.1 The CBM includes fragments of roof tile, brick and drainpipe; although some small pieces are undiagnostic, it is unlikely that any of this material is earlier than post-medieval.

### **6.4 Glass**

6.4.1 The glass includes both vessel and window glass, and is all of post-medieval/modern date. As for the pottery, the date range is likely to span the 18<sup>th</sup> to 20<sup>th</sup> centuries.

### **6.5 Other Finds**

6.5.1 Other finds comprise small quantities of clay tobacco pipe (plain stems), iron (two probable nails and a piece of wire), blast furnace slag and a single undiagnostic prehistoric worked flint flake.

### **6.6 Potential and Further Recommendations**

6.6.1 None of these finds warrants further analysis or publication; all have been recorded to an appropriate archive level.

6.6.2 Given the quantities of material recovered, their date range and provenance, retention for long-term curation is not recommended and the finds will be discarded prior to archive deposition.

## **7 DISCUSSION**

### **7.1 Summary**

7.1.1 The site soils comprised a layer of colluvium (or possibly a relic plough soil) in the north of the site overlain by 0.3-0.5m of the current ploughed topsoil. No colluvium was present in the raised southern part of the site. Finds almost exclusively dated from the post-medieval period, with one flint flake recovered by a team member whilst traversing the site, and a sherd of medieval pottery recovered whilst sieving.

## **7.2 Conclusions**

- 7.2.1 The finds were largely indicative of post-medieval manuring and were most likely imported. The single sherd of medieval pottery and flint flake hint at low density earlier activity in the vicinity. The single flint flake when added to the fieldwalking results does suggest a low background scatter of prehistoric activity, but this could not be more closely defined.

## **8 ARCHIVE AND COPYRIGHT**

### **8.1 Archive**

- 8.1.1 The archive will be deposited with Mansfield Museum, under an accession number yet to be confirmed.
- 8.1.2 The site archive will be prepared in line with United Kingdom Institute for Conservation (2001), Museums and Galleries Commission (1992), English Heritage (2006b) guidelines and the requirements of the Mansfield Museum.

### **8.2 Copyright**

- 8.2.1 This report, and the archive generally, may contain material that is non-Wessex Archaeology copyright (e.g. Ordnance Survey, British Geological Survey, Crown Copyright), or the intellectual property of third parties, which we are able to provide for limited reproduction under the terms of our own copyright licences, but for which copyright itself is non-transferrable by Wessex Archaeology. Users remain bound by the conditions of the Copyright, Designs and Patents Act 1988 with regard to multiple copying and electronic dissemination of the report.

**9 REFERENCES**

- Archaeological Project Services, 2011, Archaeological Fieldwalking on land at Penniment Farm, off Abbott Road, Mansfield, Nottinghamshire (MFPP11), APS unpublished client report.
- CgMs, 2010, Land at Penniment Farm, Mansfield, Nottinghamshire, Archaeological Desk Based Assessment, unpublished client report.
- English Heritage, 2005, A Strategy for the Care and Investigation of Finds.
- English Heritage, 2006a, Guidelines on the X-radiography of Archaeological Metalwork.
- English Heritage, 2006b, Management of Research Projects in the Historic environment: a Managers Guide ('MoRPHE') London; English Heritage.
- Institute for Archaeologists (IfA), 2008a, Standard and Guidance for Archaeological Excavation.
- Institute for Archaeologists (IfA), 2008b, Standard and Guidance for the Collection, Documentation, Conservation and Research of Archaeological Materials.
- Museum and Galleries Commission, 1992. *Standards in the museum care of archaeological collections.*
- United Kingdom Institute of Conservation (UKIC), 2001, Guidelines for the Preparation of Excavation Archives for Long Term Storage.
- Wessex Archaeology, 2012, Land at Penniment Farm, Mansfield, Nottinghamshire, Written Scheme of Investigation, unpublished client report

**APPENDIX 1: TEST PIT DESCRIPTIONS**

<b>Test Pit No. 1</b>	<b>Co-ordinates: 451433.17, 362132.58 Ground Level (135m AOD):</b>	<b>Dimensions: 1mx1m Max depth: 0.5m</b>
<b>Context</b>	<b>Description</b>	<b>Depth (m)</b>
<b>101</b>	Topsoil – Mid brown silty loam with very rare small stone inclusions	0m-0.1m
<b>102</b>	Topsoil – Mid brown silty loam with very rare small stone inclusions	0.1m-0.2m
<b>103</b>	Topsoil – Mid brown silty loam with very rare small stone inclusions	0.2m-0.3m
<b>104</b>	Subsoil – Light orange brown silty clay, no visible inclusions	0.3m-0.4m
<b>105</b>	Subsoil – Light orange brown silty clay, no visible inclusions	0.4m-0.5m

<b>Test Pit No. 2</b>	<b>Co-ordinates: 451447.70, 362119.06 Ground Level (135m AOD):</b>	<b>Dimensions: 1mx1m Max depth: 0.5m</b>
<b>Context</b>	<b>Description</b>	<b>Depth (m)</b>
<b>201</b>	Topsoil – Mid brown silty loam with very rare small stone inclusions	0m-0.1m
<b>202</b>	Topsoil – Mid brown silty loam with very rare small stone inclusions	0.1m-0.2m
<b>203</b>	Topsoil – Mid brown silty loam with very rare small stone inclusions	0.2m-0.3m
<b>204</b>	Subsoil – Light orange brown silty clay, no visible inclusions	0.3m-0.4m
<b>205</b>	Subsoil – Light orange brown silty clay, no visible inclusions	0.4m-0.5m

<b>Test Pit No. 3</b>	<b>Co-ordinates: 451433.20, 362105.45 Ground Level (135m AOD):</b>	<b>Dimensions: 1mx1m Max depth: 0.5m</b>
<b>Context</b>	<b>Description</b>	<b>Depth (m)</b>
<b>301</b>	Topsoil – Mid brown silty loam with very rare small stone inclusions	0m-0.1m
<b>302</b>	Topsoil – Mid brown silty loam with very rare small stone inclusions	0.1m-0.2m
<b>303</b>	Topsoil – Mid brown silty loam with very rare small stone inclusions	0.2m-0.3m
<b>304</b>	Subsoil – Light orange brown silty clay, no visible inclusions	0.3m-0.4m
<b>305</b>	Natural – Mid red brown silty clay, no visible inclusions	0.4m-0.5m

Test Pit No. 4	Co-ordinates: 451423.91, 362105.49 Ground Level (135m AOD):	Dimensions: 1mx1m Max depth: 0.5m
Context	Description	Depth (m)
401	Topsoil – Mid brown silty loam with very rare small stone inclusions	0m-0.1m
402	Topsoil – Mid brown silty loam with very rare small stone inclusions	0.1m-0.2m
403	Topsoil – Mid brown silty loam with very rare small stone inclusions	0.2m-0.3m
404	Subsoil – Light orange brown silty clay, no visible inclusions	0.3m-0.4m
405	Subsoil – Light orange brown silty clay, no visible inclusions	0.4m-0.5m

Test Pit No. 5	Co-ordinates: 451418.36, 362119.16 Ground Level (135m AOD):	Dimensions: 1mx1m Max depth: 0.5m
Context	Description	Depth (m)
501	Topsoil – Mid brown silty loam with very rare small stone inclusions	0m-0.1m
502	Topsoil – Mid brown silty loam with very rare small stone inclusions	0.1m-0.2m
503	Topsoil – Mid brown silty loam with very rare small stone inclusions	0.2m-0.3m
504	Subsoil – Light orange brown silty clay, no visible inclusions	0.3m-0.4m
505	Natural – Mid red brown silty clay, no visible inclusions	0.4m-0.5m

Test Pit No. 6	Co-ordinates: 451409.07, 362119.03 Ground Level (135m AOD):	Dimensions: 1mx1m Max depth: 0.5m
Context	Description	Depth (m)
601	Topsoil – Mid brown silty loam with very rare small stone inclusions	0m-0.1m
602	Topsoil – Mid brown silty loam with very rare small stone inclusions	0.1m-0.2m
603	Topsoil – Mid brown silty loam with very rare small stone inclusions	0.2m-0.3m
604	Subsoil – Light orange brown silty clay, no visible inclusions	0.3m-0.4m
605	Natural – Mid red brown silty clay, no visible inclusions	0.4m-0.5m

<b>Test Pit No. 7</b>	<b>Co-ordinates: 451394.56, 36105.57 Ground Level (135m AOD):</b>	<b>Dimensions: 1mx1m Max depth: 0.5m</b>
<b>Context</b>	<b>Description</b>	<b>Depth (m)</b>
<b>701</b>	Topsoil – Mid brown silty loam with very rare small stone inclusions	0m-0.1m
<b>702</b>	Topsoil – Mid brown silty loam with very rare small stone inclusions	0.1m-0.2m
<b>703</b>	Topsoil – Mid brown silty loam with very rare small stone inclusions	0.2m-0.3m
<b>704</b>	Subsoil – Light orange brown silty clay, no visible inclusions	0.3m-0.4m
<b>705</b>	Natural – Mid red brown silty clay, no visible inclusions	0.4m-0.5m

<b>Test Pit No. 8</b>	<b>Co-ordinates: 451409.01, 362091.81 Ground Level (135m AOD):</b>	<b>Dimensions: 1mx1m Max depth: 0.5m</b>
<b>Context</b>	<b>Description</b>	<b>Depth (m)</b>
<b>801</b>	Topsoil – Mid brown silty loam with very rare small stone inclusions	0m-0.1m
<b>802</b>	Topsoil – Mid brown silty loam with very rare small stone inclusions	0.1m-0.2m
<b>803</b>	Topsoil – Mid brown silty loam with very rare small stone inclusions	0.2m-0.3m
<b>804</b>	Subsoil – Light orange brown silty clay, no visible inclusions	0.3m-0.4m
<b>805</b>	Subsoil – Light orange brown silty clay, no visible inclusions	0.4m-0.5m

<b>Test Pit No. 9</b>	<b>Co-ordinates: 451560.97, 362094.68 Ground Level (135m AOD):</b>	<b>Dimensions: 1mx1m Max depth: 0.5m</b>
<b>Context</b>	<b>Description</b>	<b>Depth (m)</b>
<b>901</b>	Topsoil – Mid brown silty clay, very rare small stone inclusions	0m-0.1m
<b>902</b>	Topsoil – Mid brown silty clay, very rare small stone inclusions	0.1m-0.2m
<b>903</b>	Topsoil – Mid brown silty clay, very rare small stone inclusions	0.2m-0.3m
<b>904</b>	Subsoil – Light orange brown silty clay, rare coarse gravel inclusions	0.3m-0.4m
<b>905</b>	Subsoil – Light orange brown silty clay, rare coarse gravel inclusions	0.4m-0.5m



Test Pit No. 10	Co-ordinates: 451546.66, 362081.19 Ground Level (135m AOD):	Dimensions: 1mx1m Max depth: 0.5m
Context	Description	Depth (m)
1001	Topsoil – Mid brown silty clay, very rare small stone inclusions	0m-0.1m
1002	Topsoil – Mid brown silty clay, very rare small stone inclusions	0.1m-0.2m
1003	Topsoil – Mid brown silty clay, very rare small stone inclusions	0.2m-0.3m
1004	Subsoil – Light orange brown silty clay, rare coarse gravel inclusions	0.3m-0.4m
1005	Subsoil – Light orange brown silty clay, rare coarse gravel inclusions	0.4m-0.5m

Test Pit No. 11	Co-ordinates: 451575.84, 362081.14 Ground Level (135m AOD):	Dimensions: 1mx1m Max depth: 0.6m
Context	Description	Depth (m)
1101	Topsoil – Mid brown silty clay, very rare small stone inclusions	0m-0.1m
1102	Topsoil – Mid brown silty clay, very rare small stone inclusions	0.1m-0.2m
1103	Topsoil – Mid brown silty clay, very rare small stone inclusions	0.2m-0.3m
1104	Subsoil – Light orange brown silty clay, rare coarse gravel inclusions	0.3m-0.4m
1105	Subsoil – Light orange brown silty clay, rare coarse gravel inclusions	0.4m-0.5m
1106	Natural – Mid red silty clay with moderate coarse gravel inclusions	0.5m-0.6m

Test Pit No. 12	Co-ordinates: 451561.38, 362067.54 Ground Level (135m AOD):	Dimensions: 1mx1m Max depth: 0.5m
Context	Description	Depth (m)
1201	Topsoil – Mid brown silty clay, very rare small stone inclusions	0m-0.1m
1202	Topsoil – Mid brown silty clay, very rare small stone inclusions	0.1m-0.2m
1203	Topsoil – Mid brown silty clay, very rare small stone inclusions	0.2m-0.3m
1204	Natural – Mid red silty clay with moderate coarse gravel inclusions	0.3m-0.4m
1205	Natural – Mid red silty clay with moderate coarse gravel inclusions	0.4m-0.5m

<b>Test Pit No. 13</b>	<b>Co-ordinates: 451407.25, 361865.21 Ground Level (142m AOD):</b>	<b>Dimensions: 1mx1m Max depth: 0.5m</b>
<b>Context</b>	<b>Description</b>	<b>Depth (m)</b>
1301	Topsoil – Mid grey brown silty clay loam, rare coarse gravel inclusions	0m-0.1m
1302	Topsoil – Mid grey brown silty clay loam, rare coarse gravel inclusions	0.1m-0.2m
1303	Topsoil – Mid grey brown silty clay loam, rare coarse gravel inclusions	0.2m-0.3m
1304	Topsoil – Mid grey brown silty clay loam, rare coarse gravel inclusions	0.3m-0.4m
1305	Natural – Mid yellow brown sandy clay silty clay with rare coarse gravel inclusions	0.4m-0.5m

<b>Test Pit No. 14</b>	<b>Co-ordinates: 451392.66, 361851.90 Ground Level (142m AOD):</b>	<b>Dimensions: 1mx1m Max depth: 0.4m</b>
<b>Context</b>	<b>Description</b>	<b>Depth (m)</b>
1401	Topsoil – Mid grey brown silty clay loam, rare coarse gravel inclusions	0m-0.1m
1402	Topsoil – Mid grey brown silty clay loam, rare coarse gravel inclusions	0.1m-0.2m
1403	Topsoil – Mid grey brown silty clay loam, rare coarse gravel inclusions	0.2m-0.3m
1404	Natural – Mid red sandy clay with rare coarse gravel inclusions	0.3m-0.4m

<b>Test Pit No. 15</b>	<b>Co-ordinates: 451421.63, 361851.55 Ground Level (142m AOD):</b>	<b>Dimensions: 1mx1m Max depth: 0.5m</b>
<b>Context</b>	<b>Description</b>	<b>Depth (m)</b>
1501	Topsoil – Mid grey brown silty clay loam, rare coarse gravel inclusions	0m-0.1m
1502	Topsoil – Mid grey brown silty clay loam, rare coarse gravel inclusions	0.1m-0.2m
1503	Topsoil – Mid grey brown silty clay loam, rare coarse gravel inclusions	0.2m-0.3m
1504	Topsoil – Mid grey brown silty clay loam, rare coarse gravel inclusions	0.3m-0.4m
1505	Natural – Mid yellow brown sandy clay silty clay with rare coarse gravel inclusions	0.4m-0.5m
1506	Context number taken to record location of surface found flint, 63m to ESE of test pit 5	0

<b>Test Pit No. 16</b>	<b>Co-ordinates: 451407.18, 361837.88 Ground Level (142m AOD):</b>	<b>Dimensions: 1mx1m Max depth: 0.5m</b>
<b>Context</b>	<b>Description</b>	<b>Depth (m)</b>
<b>1601</b>	Topsoil – Mid grey brown silty clay loam, rare coarse gravel inclusions	0m-0.1m
<b>1602</b>	Topsoil – Mid grey brown silty clay loam, rare coarse gravel inclusions	0.1m-0.2m
<b>1603</b>	Topsoil – Mid grey brown silty clay loam, rare coarse gravel inclusions	0.2m-0.3m
<b>1604</b>	Natural – Mid red sandy clay with rare coarse gravel inclusions	0.3m-0.4m

<b>Test Pit No. 17</b>	<b>Co-ordinates: 451432.89, 361623.22 Ground Level (148m AOD):</b>	<b>Dimensions: 1mx1m Max depth: 0.3m</b>
<b>Context</b>	<b>Description</b>	<b>Depth (m)</b>
<b>1701</b>	Topsoil – Mid grey brown silty clay loam, rare coarse gravel inclusions	0m-0.1m
<b>1702</b>	Topsoil – Mid grey brown silty clay loam, rare coarse gravel inclusions	0.1m-0.2m
<b>1703</b>	Topsoil – Mid grey brown silty clay loam, rare coarse gravel inclusions	0.2m-0.3m

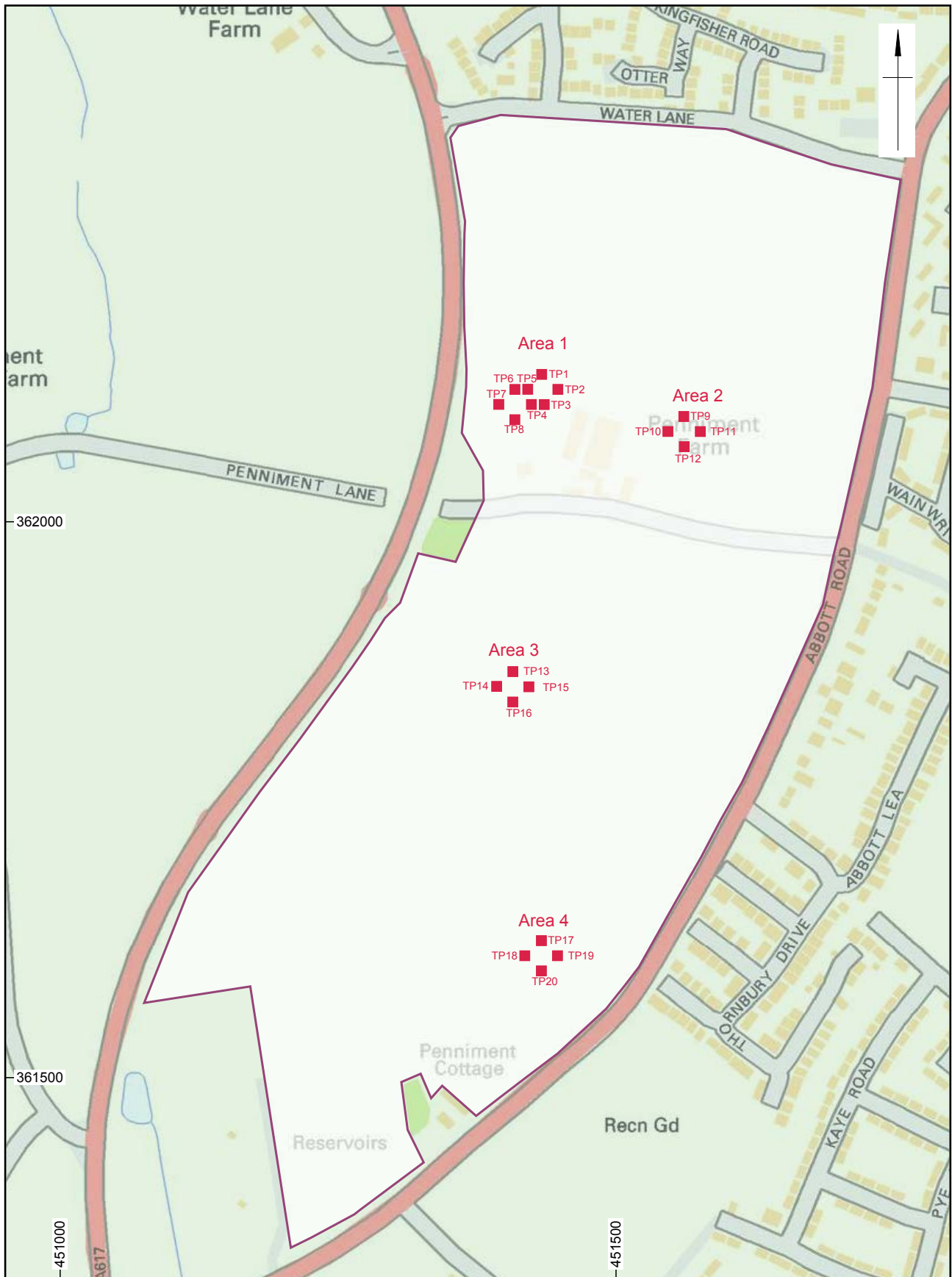
<b>Test Pit No. 18</b>	<b>Co-ordinates: 451417.97, 361609.61 Ground Level (148m AOD):</b>	<b>Dimensions: 1mx1m Max depth: 0.5m</b>
<b>Context</b>	<b>Description</b>	<b>Depth (m)</b>
<b>1801</b>	Topsoil – Mid grey brown silty clay loam, rare coarse gravel inclusions	0m-0.1m
<b>1802</b>	Topsoil – Mid grey brown silty clay loam, rare coarse gravel inclusions	0.1m-0.2m
<b>1803</b>	Topsoil – Mid grey brown silty clay loam, rare coarse gravel inclusions	0.2m-0.3m
<b>1804</b>	Topsoil – Mid grey brown silty clay loam, rare coarse gravel inclusions	0.3m-0.4m
<b>1805</b>	Natural – Light brown yellow sandy clay rare medium and coarse gravel inclusions	0.4m-0.5m

<b>Test Pit No. 19</b>	<b>Co-ordinates: 451447.36, 361609.62 Ground Level (148m AOD):</b>	<b>Dimensions: 1mx1m Max depth: 0.5m</b>
<b>Context</b>	<b>Description</b>	<b>Depth (m)</b>
<b>1901</b>	Topsoil – Mid grey brown silty clay loam, rare coarse gravel inclusions	0m-0.1m
<b>1902</b>	Topsoil – Mid grey brown silty clay loam, rare coarse gravel inclusions	0.1m-0.2m
<b>1903</b>	Topsoil – Mid grey brown silty clay loam, rare coarse gravel inclusions	0.2m-0.3m
<b>1904</b>	Topsoil – Mid grey brown silty clay loam, rare coarse gravel inclusions	0.3m-0.4m
<b>1905</b>	Natural – Light brown yellow sandy clay with greyish hue rare medium and coarse gravel inclusions	0.4m-0.5m

<b>Test Pit No. 20</b>	<b>Co-ordinates: 451432.87, 361595.97 Ground Level (148m AOD):</b>	<b>Dimensions: 1mx1m Max depth: 0.5m</b>
<b>Context</b>	<b>Description</b>	<b>Depth (m)</b>
<b>2001</b>	Topsoil – Mid grey brown silty clay loam, rare coarse gravel inclusions	0m-0.1m
<b>2002</b>	Topsoil – Mid grey brown silty clay loam, rare coarse gravel inclusions	0.1m-0.2m
<b>2003</b>	Topsoil – Mid grey brown silty clay loam, rare coarse gravel inclusions	0.2m-0.3m
<b>2004</b>	Topsoil – Mid grey brown silty clay loam, rare coarse gravel inclusions	0.3m-0.4m
<b>2005</b>	Topsoil – Mid grey brown silty clay loam, rare coarse gravel inclusions	0.4m-0.5m

**APPENDIX 2: FINDS**
**Table 1: All finds by context (number / weight in grammes)**

Context	Area	CBM	Clay Pipe	Glass	Pottery	Other Finds
103	1			1/10	1/1	
202	1				1/18	
203	1		1/1		2/4	
301	1	1/36		2/6	1/8	
302	1		1/2		3/10	
303	1		1/2	1/1		
402	1				2/4	
501	1	1/36				
502	1	2/6			2/16	
503	1				1/1	
504	1		1/2		1/16	1 slag
505	1					1 slag
601	1	1/4				
602	1				2/22	
603	1		1/1		1/4	
604	1				1/1	1 slag
701	1		1/2		1/1	
702	1				2/4	
703	1		1/2		1/1	
704	1		1/1	1/1	1/2	
803	1			1/2		1 slag; 1 iron
902	2	1/2			1/8	
903	2	1/34			1/2	
1002	2				1/8	
1003	2				2/10	1 iron
1004	2	1/10				
1101	2			1/2		
1102	2			1/16		
1201	2				1/2	
1202	2			1/2	1/2	
1203	2	1/20	1/2			
1302	3				2/2	
1404	3			1/4		
1501	3		1/1		1/2	
1502	3	1/18				
1503	3	3/62			1/2	
1504	3				1/2	1 iron
1506	3					1 flint
1603	3				1/2	
1701	4	1/16				
1703	4				1/1	
1801	4			1/4		
1802	4		1/2			
1803	4	1/28		1/6	1/4	
1804	4	1/1			1/4	
1901	4	1/34				1 slag
2004	4	2/4			1/8	
<b>TOTALS</b>		<b>19/311</b>	<b>11/18</b>	<b>12/49</b>	<b>40/171</b>	



Site boundary  
 Trial pit location

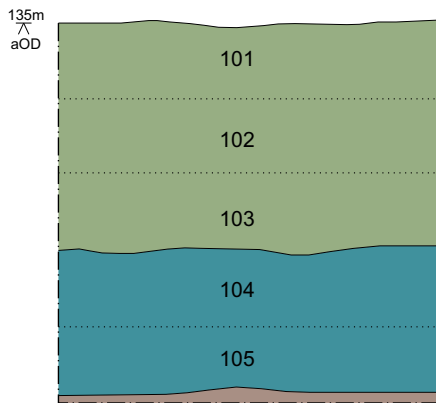
**Wessex Archaeology**

Reproduced from the 2010 Ordnance Survey Streetview map with the permission of the controller of Her Majesty's Stationery Office  
 © Crown copyright, Wessex Archaeology, Portway House, Old Sarum Park, Salisbury, Wiltshire. SP4 6EB. Licence Number: 100028190.  
 This material is for client report only © Wessex Archaeology. No unauthorised reproduction.

Date:	January 2012	Revision Number:	1.0
Scale:	1:5000 @ A4	Illustrator:	CB
Path:	Y:\Tenders\T15160_Mansfield\Drawing Office		

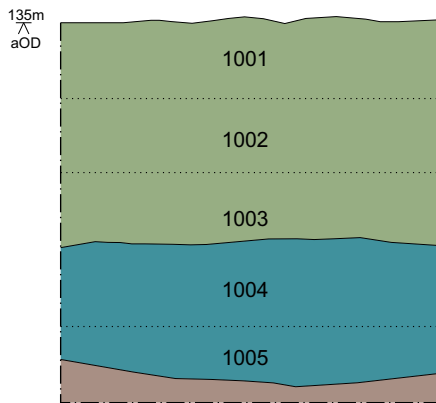
Site Location

Figure 1



Test pit 4 in Area 1. View from south.

Area 1  
Test Pit 1



Test pit 9 in Area 2. View from south.

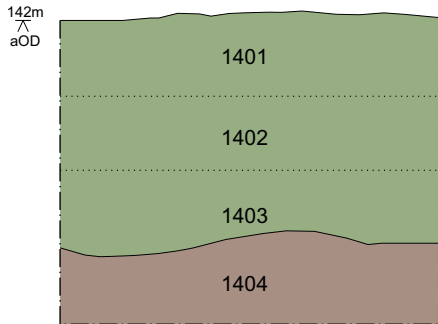
Area 2  
Test Pit 10

- Topsoil
- Subsoil
- Natural
- Sieving spits



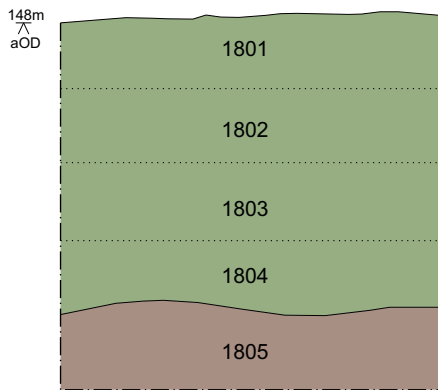
This material is for client report only © Wessex Archaeology. No unauthorised reproduction.

Date:	20/02/2012	Revision Number:	0
Scale:	1:10 @ A4	Illustrator:	CS
Path:	Y:\Projects\84100_penniment Farm\Drawing Office\Report Figs\Evaly-m-d\T15160.dwg		



Test pit 15 in Area 3. View from southwest.

**Area3**  
**Test Pit 14**



Test pit 19 in Area 4. View from south.

**Area4**  
**Test Pit 18**

- Topsoil
- Subsoil
- Natural
- Sieving spits



This material is for client report only © Wessex Archaeology. No unauthorised reproduction.

Date:	20/02/2012	Revision Number:	0
Scale:	1:10 @ A4	Illustrator:	CS
Path:	Y:\Projects\84100_penniment Farm\Drawing Office\Report Figs\Evaly-m-d\T15160.dwg		





**WESSEX ARCHAEOLOGY LIMITED.**

Registered Head Office: Portway House, Old Sarum Park, Salisbury, Wiltshire SP4 6EB.

Tel: 01722 326867 Fax: 01722 337562 info@wessexarch.co.uk

Regional offices in **Edinburgh, Rochester and Sheffield**

For more information visit [www.wessexarch.co.uk](http://www.wessexarch.co.uk)

