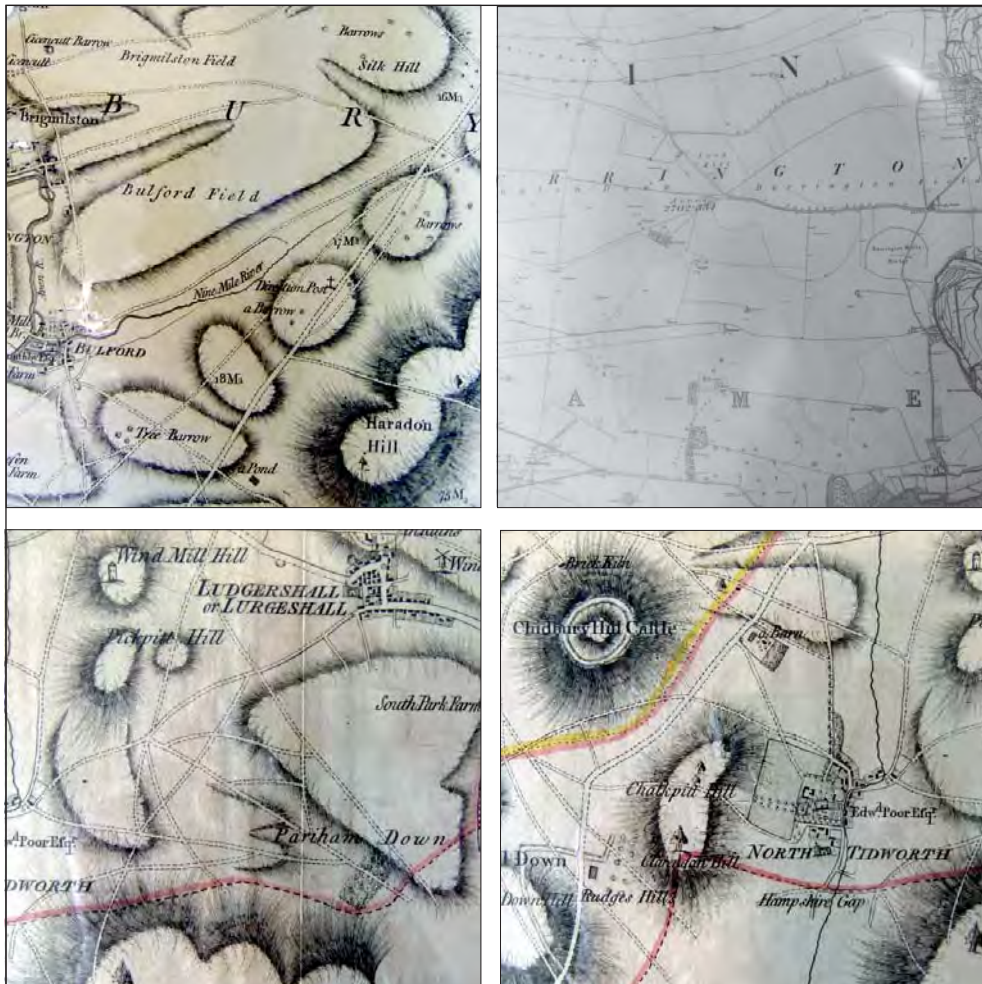




making sense of heritage

Army Basing Programme (ABP), Wiltshire Bulford, Larkhill, Perham Down and Tidworth

Archaeological Watching Brief Report



Ref: 105290.12
December 2014



**Army Basing Programme (ABP), Wiltshire
Bulford, Larkhill, Perham Down and Tidworth**

Archaeological Watching Brief Report

Prepared for

Aspire Defence Capital Works
Aspire House
Princes Avenue
Aldershot
Hampshire
GU11 2LF

Prepared by

Wessex Archaeology
Portway House
Old Sarum Park
Salisbury
Wiltshire
SP4 6EB

www.wessexarch.co.uk



December 2014

Report Ref: 105290.12



Quality Assurance

| | | | | | |
|----------------------------------|--------|---|--|--------------------|--|
| Project Code | 105290 | Accession Code | | Client Ref. | |
| Planning Application Ref. | | Ordnance Survey (OS) national grid reference (NGR) | 418700 143500 (<i>Bulford</i>) 413400 144900 (<i>Larkhill</i>) 425418 149200 (<i>Perham Down</i>) 422482 148290 (<i>Tidworth</i>) | | |

| Version | Status* | Prepared by | Checked and Approved By | Approver's Signature | Date |
|---------|--|-------------|-------------------------|--|----------|
| v01 | I | KLD | GSC |  | 26/11/14 |
| File: | X:\PROJECTS\105290_Reports\Post-ex reports\Wiltshire\105290_ABPWilts_TP rep_KLD_2014_12_04 | | | | |
| v02 | E | KLD | ADC |  | 12/12/14 |
| File: | | | | | |
| File: | | | | | |
| File: | | | | | |
| File: | | | | | |

* I = Internal Draft; E = External Draft; F = Final

DISCLAIMER

THE MATERIAL CONTAINED IN THIS REPORT WAS DESIGNED AS AN INTEGRAL PART OF A REPORT TO AN INDIVIDUAL CLIENT AND WAS PREPARED SOLELY FOR THE BENEFIT OF THAT CLIENT. THE MATERIAL CONTAINED IN THIS REPORT DOES NOT NECESSARILY STAND ON ITS OWN AND IS NOT INTENDED TO NOR SHOULD IT BE RELIED UPON BY ANY THIRD PARTY. TO THE FULLEST EXTENT PERMITTED BY LAW WESSEX ARCHAEOLOGY WILL NOT BE LIABLE BY REASON OF BREACH OF CONTRACT NEGLIGENCE OR OTHERWISE FOR ANY LOSS OR DAMAGE (WHETHER DIRECT INDIRECT OR CONSEQUENTIAL) OCCASIONED TO ANY PERSON ACTING OR OMITTING TO ACT OR REFRAINING FROM ACTING IN RELIANCE UPON THE MATERIAL CONTAINED IN THIS REPORT ARISING FROM OR CONNECTED WITH ANY ERROR OR OMISSION IN THE MATERIAL CONTAINED IN THE REPORT. LOSS OR DAMAGE AS REFERRED TO ABOVE SHALL BE DEEMED TO INCLUDE, BUT IS NOT LIMITED TO, ANY LOSS OF PROFITS OR ANTICIPATED PROFITS DAMAGE TO REPUTATION OR GOODWILL LOSS OF BUSINESS OR ANTICIPATED BUSINESS DAMAGES COSTS EXPENSES INCURRED OR PAYABLE TO ANY THIRD PARTY (IN ALL CASES WHETHER DIRECT INDIRECT OR CONSEQUENTIAL) OR ANY OTHER DIRECT INDIRECT OR CONSEQUENTIAL LOSS OR DAMAGE.



Army Basing Programme (ABP), Wiltshire: Bulford, Larkhill, Perham Down and Tidworth

Archaeological Watching Brief Report

Contents

| | |
|---|-----------|
| Summary | iv |
| Acknowledgements..... | v |
| 1 INTRODUCTION..... | 1 |
| 1.1 Project background | 1 |
| 2 AIMS..... | 2 |
| 2.1 General aims and objectives | 2 |
| 3 METHODOLOGY..... | 2 |
| 3.1 Introduction | 2 |
| 3.2 Watching brief | 2 |
| 3.3 Recording..... | 3 |
| 3.4 The Sites..... | 3 |
| 3.5 Archaeological background | 3 |
| 3.6 Watching brief results..... | 3 |
| 4 PART A – BULFORD CAMP | 5 |
| 4.1 The Site..... | 5 |
| 4.2 Archaeological background | 5 |
| <i>Introduction</i> | 5 |
| <i>Recent investigations</i> | 5 |
| <i>Known archaeology</i> | 5 |
| 4.3 Results (Bulford) | 6 |
| <i>Introduction</i> | 6 |
| <i>Deposit sequences</i> | 6 |
| <i>Modern utilities and contamination</i> | 7 |
| <i>Overview</i> | 7 |
| 4.4 Test pit summaries (Bulford) | 7 |
| 5 PART B – LARKHILL CAMP..... | 14 |
| 5.1 The Site..... | 14 |
| 5.2 Archaeological background | 14 |
| <i>Introduction</i> | 14 |
| <i>Recent investigations</i> | 14 |
| <i>Known archaeology</i> | 15 |
| 5.3 Results (Larkhill) | 15 |



| | | |
|-----------|---|-----------|
| | Summary..... | 15 |
| | Deposit sequences..... | 15 |
| | Modern utilities and contamination | 16 |
| | Overview..... | 16 |
| 5.4 | Test pit summaries (Larkhill) | 16 |
| 6 | PART C – PERHAM DOWN CAMP | 30 |
| 6.1 | The Site..... | 30 |
| 6.2 | Archaeological background | 30 |
| | <i>Introduction</i> | 30 |
| | <i>Recent investigations</i> | 30 |
| | <i>Known archaeology</i> | 31 |
| 6.3 | Results (Perham Down) | 31 |
| | <i>Summary</i> | 31 |
| | <i>Deposit sequences</i> | 31 |
| | <i>Modern utilities and contamination</i> | 32 |
| | <i>Overview</i> | 32 |
| 6.4 | Test pit summaries (Perham Down) | 32 |
| 7 | PART D – TIDWORTH CAMP | 39 |
| 7.1 | The Site..... | 39 |
| 7.2 | Archaeological background | 39 |
| | <i>Introduction</i> | 39 |
| | <i>Recent investigations</i> | 39 |
| | <i>Known Archaeology</i> | 40 |
| 7.3 | Results (Tidworth) | 40 |
| | <i>Summary</i> | 40 |
| | <i>Deposit sequences</i> | 40 |
| | <i>Modern utilities and contamination</i> | 41 |
| | <i>Overview</i> | 41 |
| 7.4 | Test pit summaries (Tidworth) | 41 |
| 8 | ARTEFACTUAL AND ENVIRONMENTAL EVIDENCE | 49 |
| 9 | CONCLUSIONS AND FURTHER POTENTIAL | 49 |
| 10 | STORAGE AND CURATION | 49 |
| 10.1 | Museum | 49 |
| 10.2 | Preparation of Archive..... | 49 |
| 10.3 | Storage | 50 |
| 10.4 | Discard policy..... | 50 |
| 10.5 | Copyright..... | 50 |
| 10.6 | Security Copy..... | 50 |
| 10.7 | OASIS..... | 50 |
| 11 | REFERENCES..... | 50 |
| 12 | APPENDIX 1 | 52 |
| 12.1 | OASIS form (Bulford) | 52 |
| 12.2 | OASIS form (Larkhill) | 55 |



| | | |
|------|--------------------------------|----|
| 12.3 | OASIS form (Perham Down) | 58 |
| 12.4 | OASIS form (Tidworth) | 61 |

Figures

- Figure 1: Location plan of ABP sites in Wiltshire
Figure 2: Site plan and Test pit locations – Bulford Camp
Figure 3: Site plan and Test pit locations – Larkhill Camp
Figure 4: Site plan and Test pit locations – Perham Down Camp
Figure 5: Site plan and Test pit locations – Tidworth Camp

Plates

- Cover: Andrews and Drury's 1773 Map of Wiltshire (Bulford, Perham Down and Tidworth);
1887 Ordnance Survey 1:10,560 Map (Larkhill)
- Plate 1: Bulford: working shot near Test pit 1266
Plate 2: Bulford: working shot near Test pit 1266
Plate 3: Bulford: Test pit 1256 from the east showing substantial made-ground
Plate 4: Bulford: Test pit 1257 from the west, showing substantial made-ground
Plate 5: Larkhill: deep sequence of made- ground in Test pit 1364 (from the south-west)
Plate 6: Larkhill: hand-excavation (Test pit 1347)
Plate 7: Larkhill: machine excavation (Test pit 1340)
Plate 8: Larkhill: machine excavation (Test pit 1366)
Plate 9: Larkhill: Test pit 1378 from the east, showing natural soil sequence
Plate 10: Perham Down: borehole sampling
Plate 11: Perham Down: Test pit 1442 from the south, showing natural soil sequence
Plate 12: Perham Down: machine excavating into a bank (Test pit 1433)
Plate 13: Perham Down: Victorian made-ground layers, overlying original ground surface in
Test pit 1427 (from the east)
Plate 14: Tidworth: modern animal burial and made-ground in Test pit 1537 (from the north)
Plate 15: Tidworth: Test pit 1542 (from the east), banked chalk
Plate 16: Tidworth: Test pit 1566 from the west, showing deep made-ground
Plate 17: Tidworth: large Sarsen boulder from Test pit 1565
Plate 18: Tidworth: Test pit 1539 from the south, showing series of made-ground deposits
Plate 19: Tidworth: Test pit 1568 from the east, showing made-ground over original ground
surface
Plate 20: Tidworth: Test pit 1549 from the east, showing redeposited chalk over earlier made-
ground deposits
Plate 21: Tidworth: Test pit 1551 from the north, showing natural soil sequence
Plate 22: Tidworth: hand-dug Test pit 1557



Army Basing Programme (ABP), Wiltshire: Bulford, Larkhill, Perham Down and Tidworth

Archaeological Watching Brief Report

Summary

Wessex Archaeology was commissioned by Aspire Defence Capital Works to archaeologically monitor a programme of geotechnical test-pitting at four Military Camps on the Salisbury Plain Defence Training Estates, centred on NGRs 418700 143500 (Bulford), 413400 144900 (Larkhill), 425418 149200 (Perham Down) and 422482 148290 (Tidworth). The fieldwork took place between the 18th August and 7th October 2014.

No archaeological features, deposits or artefacts were encountered during the course of the works.

In general the results concur with conclusions drawn from previous investigations. Large scale landscaping, both building-up and reducing of ground levels, structural development and redevelopment, are in evidence at all four Sites. Undisturbed natural soil horizons, and therefore potentially archaeological remains, exist intermittently across the Sites, sealed below substantial deposits of made-ground and in areas that have remained ostensibly undeveloped since the camps were established.

The Bulford and Larkhill Camps were found to have similarly extensive levels of landscaping, as well as limited areas of preserved soil horizons. At Tidworth the landscaping appears more weighted towards the building-up of ground levels, potentially preserving archaeological deposits underneath. At Perham Down it appears that landscaping and development has been comparatively less extensive and less intrusive – though these appraisals are limited to the areas investigated.

Across the Sites there remains a moderate to high potential for survival of archaeological resource in undisturbed areas, and where original soil horizons exist below made-ground deposits. Where there is substantial truncation, whether due to landscaping, foundations or service trenches, the potential for the survival of archaeological features and deposits in that area may be considered low.



Army Basing Programme (ABP), Wiltshire: Bulford, Larkhill, Perham Down and Tidworth

Archaeological Watching Brief Report

Acknowledgements

Wessex Archaeology would like to express their gratitude to Aspire Defence Capital Works for commissioning the watching brief, and particularly the support provided by Roy Howard, Gayathiri Shankar and Amber Haigh. Thanks are also due to Will Anstey, Dave Harris and Alex Trotsman of SLR Consulting Ltd, and the representatives of AM Sanders. Wessex Archaeology acknowledges and appreciates the advice offered by Clare King, the Assistant County Archaeologist at Wiltshire County Council.

The project was managed by Gareth Chaffey. Michael Dinwiddy, Benjamin Cullen and Patrick Dresch maintained the Watching Brief. This report was compiled by Kirsten Egging Dinwiddy. The illustrations were prepared by Liz James.



Army Basing Programme (ABP), Wiltshire: Bulford, Larkhill, Perham Down and Tidworth

Archaeological Watching Brief Report

1 INTRODUCTION

1.1 Project background

- 1.1.1 Wessex Archaeology (WA) was commissioned by Aspire Defence Capital Works to archaeologically monitor geotechnical test-pitting at four Army bases in Wiltshire: Bulford Camp (centred on National Grid Reference (NGR) 418700 143500); Larkhill Camp, Durrington (NGR 412920 144700), Perham Down (NGR 425418 149200) and Tidworth (NGR 422482 148290), hereafter referred to as the 'Site(s)' (**Figure 1**).
- 1.1.2 The Regular Army Basing Plan, announced in 2013, set out the future UK Army base locations as units return from Germany. This later evolved into a delivery programme known as the Army Basing Programme (ABP), which aims to better utilise the UK estate and establish a greater Army presence on the Salisbury Plain Training Area (SPTA).
- 1.1.3 The ABP requirements within existing military camps include:
- *new buildings and the refurbishment of existing facilities for single living accommodation (SLA);*
 - *Officers and Senior Rank messes;*
 - *catering and dining facilities;*
 - *regimental and company headquarters;*
 - *stores, garages and workshops;*
 - *education and training buildings/facilities;*
 - *physical training and recreational sports facilities; and*
 - *various medical facilities*
- 1.1.4 Since 2006 Aspire Defence Capital Works has delivered Project Allenby/Connaught (PAC) - a major construction programme for the Defence Infrastructure Organisation (DIO) within military camps at Aldershot and on Salisbury Plain.
- 1.1.5 The works, to which this report refers, comprised a series of preparatory site surveys comprising major intrusive geotechnical and contamination investigations at Bulford, Larkhill, Perham Down, and Tidworth. Similar investigations were carried out at Aldershot, Hampshire, for which a separate report has been prepared (WA 2014a).
- 1.1.6 The intrusive investigations were undertaken as part of the iterative design process. Trial pits and boreholes were located where new buildings and other structures are proposed.



- 1.1.7 This document presents the results of the watching brief, which was undertaken in accordance with the Written Schemes of Investigation (WSI; WA 2014b–e). The WSIs conforms (in format and content) with current best practice and guidance outlined in *Management of Research Projects in the Historic Environment* ('MoRPHE', English Heritage 2006) and the Chartered Institute for Archaeologists' (CIfA) *A Standard and guidance for an archaeological watching brief* (IfA 2013).
- 1.1.8 The work was carried out from the 18th August to the 7th October 2014. The individual sites were visited as follows:
- *Bulford: 23rd September – 7th October 2014*
 - *Larkhill: 22nd September – 10th October 2014*
 - *Perham: 18th – 19th August 2014*
 - *Tidworth: 8th – 22nd September 2014*

2 AIMS

2.1 General aims and objectives

2.1.1 The aims of the watching brief were to:

- *determine the presence or absence of archaeological remains, and should they be present, to ensure their preservation by record to the highest possible standard;*
- *confirm their approximate date or date range by means of artefactual or other evidence;*
- *determine or confirm their approximate extent;*
- *determine their condition and state of preservation;*
- *determine the degree of complexity of the horizontal and/or vertical stratigraphy present;*
- *sufficiently record the exposed deposits (including natural and modern) and their sequence; and to*
- *prepare a report on the results in order to inform subsequent mitigation strategies.*

3 METHODOLOGY

3.1 Introduction

3.1.1 The following methodology was proposed to meet the aims and objectives of the watching brief. All works followed the methodology set-out in the WSIs (WA 2014b–e), and the IfA's *Standard and guidance for an archaeological watching brief* (IfA 2013), except where they are superseded by statements made below.

3.1.2 The unique project code **105290** has been clearly marked on all documentation relating to the watching brief.

3.2 Watching brief

3.2.1 An experienced WA archaeologist monitored the mechanical (toothless bucket) and hand excavation of a series of geotechnical test pits and boreholes set-out by the geotechnical team, and according to the WSIs (WA 2014b–e; **Figures 2–5**). Each test pit was excavated to the depth required by the geotechnical investigation unless prevented by



obstacles such as utilities or impenetrable deposits (e.g. concrete); some test pits were relocated and/or abandoned as a result.

- 3.2.2 Excavations were to cease at the top of any archaeological remains. Stripped material was visually examined for archaeological material. Further details can be found in **Parts A–D**.

3.3 Recording

- 3.3.1 All recording was undertaken using WA's *pro forma* recording sheets and recording system. Details are available on request.
- 3.3.2 A digital photographic record was maintained during the evaluation. Digital images have been subject to managed quality control and curation processes, which embed appropriate metadata within the image to ensure long term accessibility of the image set.

3.4 The Sites

- 3.4.1 Each Site will be discussed separately (**Parts A–D**), with regard to their specific location, and setting (**Figures 1–5**).

3.5 Archaeological background

- 3.5.1 A detailed historical and archaeological background for each Site has been produced elsewhere (WA 2014b–i). This report provides a summary.
- 3.5.2 The Sites are situated within an Area of Special Archaeological Significance as defined within the Salisbury District Local Plan (2011) and in proximity to the *Stonehenge, Avebury and Associated Sites* World Heritage Sites.
- 3.5.3 The archaeological record for the Sites and their wider context is extensive and varied, including antiquarian excavations, various research programmes, aerial photograph assessments and a multitude of investigations carried out in the course of development control.
- 3.5.4 Summaries of the site specific archaeological backgrounds are presented in **Parts A–D**.

3.6 Watching brief results

- 3.6.1 The results are presented separately in **Parts A–D**, and discussed together in the 'conclusions and potential' section following **Part D**.



Part A

Bulford Camp



4 PART A – BULFORD CAMP

4.1 The Site

- 4.1.1 An archaeological watching brief was maintained during geotechnical test-pitting at Bulford Camp, Wiltshire, centred on NGR 418700 143500 ('the Site' in **Part A**) (**Figure 2**).
- 4.1.2 The Site is situated to the east of Bulford village, and approximately 3km north-east of Amesbury. The camp is one of the main military facilities contained within the Salisbury Plain Defence Training Estates.
- 4.1.3 The Site comprised an irregular, approximately 120ha parcel of land containing a multitude of structures, buildings and open areas of various forms and functions.
- 4.1.4 The self-contained facility is set amid a patchwork of arable fields, pasture, undeveloped grassland and plantations, and occupies gently sloping ground at the foot of Beacon Hill. Within the Site the ground slopes evenly from east to west, from c. 130m to c. 95m above Ordnance Datum (aOD).
- 4.1.5 The underlying geology is mapped as Cretaceous Chalk of the Newhaven and Seaford Chalk Formations (British Geological Survey online viewer).

4.2 Archaeological background

Introduction

- 4.2.1 A detailed historical and archaeological background has been produced in a site-specific desk-based assessment, and summarised in the WSI (WA 2014e; 2014h). A précis is provided below.

Recent investigations

- 4.2.2 Many investigations, including archaeological evaluations and watching briefs, have been undertaken on the Site. Low levels of archaeological remains have been found, though evidence indicates extensive truncation resulting from modern landscaping and development across the area.
- 4.2.3 A desk-based assessment (WA 2014h) identified no overriding heritage constraints likely to prohibit development, though potential adverse effects were noted. The potential for indirect impact upon Scheduled Monuments located within, and at the perimeter, of the Site, and direct impact to any associated below ground remains was recognised. It was considered unlikely that the proposed development would have an adverse effect upon the settings of any of the identified heritage assets.
- 4.2.4 The study emphasised that future development may entail a risk of causing direct and indirect impacts to non-designated, yet historically significant structures located within the Site.
- 4.2.5 An archaeological interest was identified within the Site, i.e. the potential for the presence of buried archaeological remains, particularly regarding prehistoric funerary and ceremonial monuments, settlement and agricultural practices.

Known archaeology

- 4.2.6 Several barrows, presumably of Late Neolithic or Bronze Age date, are known in the immediate vicinity of the Site. These include a Scheduled Monument comprising two Late



Neolithic/Bronze Age barrows SM No. 1009964, one of which (a 'bell' barrow) lies within the Site boundary.

- 4.2.7 A pit containing struck flint was found on the Site.
- 4.2.8 A ditch containing a post-medieval nail was recorded on the Site during recent investigations.
- 4.2.9 The camp developed from a new tented encampment in 1898, to a larger, more permanent base by 1903, featuring structures of wood, metal and felt.
- 4.2.10 During the Second World War British Units and for a short while the Royal Australian Army Ordnance Corps were housed at Bulford. Many of the pre-war structures were removed during or soon after, and at present there is very little left of the pre-Second World War Barracks within the Site boundary.

4.3 Results (Bulford)

Introduction

- 4.3.1 Tabulated comprehensive descriptions and observations for the 28 test pits can be found in Section 4.4.
- 4.3.2 No features or deposits of archaeological interest were encountered. The observations are summarised below.

Deposit sequences

- 4.3.3 The natural geology below the Site comprises solid chalk, with flint nodules occurring randomly and in discrete seams. In most examples the upper extent of the chalk was much degraded, becoming denser and less discoloured with depth. The top of the natural geology was encountered at varying depths, from 0.10m to 3m+ (average 0.99m) below ground level (bgl). The shallowest examples were identified in Test pits **1263** (Kiwi Barracks) and **1266** (recreation ground south of the Picton Barracks).
- 4.3.4 Natural geology was not reached in three test pits, two were too shallow, being hand-dug, whilst Test pit **1261** (recreation ground south of the Picton Barracks) revealed there to be at least 3m depth of made-ground in that area.
- 4.3.5 A possible original 'subsoil' was identified in three test pits, between the natural geology and made-ground deposits in two cases (**1232** and **1241**), and the topsoil and geology in another (**1230**) (Old Ward Drive and between the Health Centre and Sling Road). Elsewhere it appears that subsoils had been removed prior to either raising the ground level, or covering with topsoil – i.e. landscaping.
- 4.3.6 A layer of topsoil was recorded in 23 test pits, ranging from 0.05m–0.3m, averaging 0.14m deep (disregarding an anomalous 0.6m example). In most cases the mid brown loam was consistent with it having derived or formed in the immediate vicinity. In a few cases the deposit was darker and of sandy or more humic content, and covered made-ground, suggesting that in some areas topsoil had been imported from outside the Site.
- 4.3.7 Various made-ground layers were observed in 24 of the 28 test pits. The deposits were predominantly consisted of demolition and building debris, with some examples of redeposited chalk seen in test pits across the Site (**1228**, **1233**, **1236**, **1257–8**, and **1261–2**). Made-ground layers and sequences (c. 0.15m–2.20m; average 1.05m) were generally encountered between the topsoil or surface/bedding material and the natural geology. The



uppermost layer(s) in a few test pits comprised tarmacadam and similar surfaces, including associated bedding material.

Modern utilities and contamination

- 4.3.8 Modern services were uncovered in four test pits, two along the edge of the dismantled railway (**1228** and **1229**), one just west of Marlborough Road (**1242**) and one west of Sandhurst Block (**1255**). Test pit **1237** (north-east of Wing Barracks) revealed deposits contaminated by asbestos.

Overview

- 4.3.9 The watching brief at Bulford Camp found a limited number of original soil horizons in the area around Old Ward Drive and between the Health Centre and Sling Road; here the potential for the *survival* of archaeological remains is considered to be *moderate* to *high*. The rest of the monitored areas proved to have been extensively landscaped, predominantly removing the original topsoil and subsoil, and sometimes the upper portion of the natural geology. As such the potential survival of buried archaeological remains is designated as *low*.

4.4 Test pit summaries (Bulford)

KEY: bgl – below ground level

| Test pit 1228 | | test pit dimensions (m) | 3.5 x 0.6 x 2.0 | |
|-----------------|--------------|--|-----------------|---------------|
| context number | context type | description | | depth bgl (m) |
| 122801 | layer | topsoil; dark brown loam; imported | | 0-0.10 |
| 122802 | layer | made-ground; mixed, heavily compacted chalk | | 0.10-0.30 |
| 122803 | layer | made ground; series lenses black humic soils; peagrit/gravel lens; chalk | | 0.30-0.80 |
| 122804 | layer | natural; degraded chalk | | 0.80-2.00 |
| 122805 | layer | natural; compact chalk; flint nodules | | 2.00+ |
| comments | | abandoned – service cable & pipes 2.00m | | |

| Test pit 1229 | | test pit dimensions (m) | 3.0 x 0.8 x 0.5 | |
|-----------------|--------------|---|-----------------|---------------|
| context number | context type | description | | depth bgl (m) |
| 122901 | layer | surface; tarmac | | 0-0.27 |
| 122902 | layer | bedding; crushed hardcore | | 0.27-0.35 |
| 122903 | layer | natural; degraded chalk; occasional flint | | 0.35-0.50 |
| comments | | abandoned – service cable exposed 0.50m | | |

| Test pit 1230 | | test pit dimensions (m) | 3.0 x 0.8 x 1.0 | |
|----------------|--------------|---|-----------------|---------------|
| context number | context type | description | | depth bgl (m) |
| 123001 | layer | topsoil; mid brown loam | | 0-0.15 |
| 123002 | layer | ?subsoil; dark-mid brown silty loam; abundant subangular gravel | | 0.15-0.34 |
| 123003 | layer | ?subsoil; orange-brown silty-clay; occasional-rare subangular flint | | 0.34-0.60 |
| 123004 | layer | natural; degraded chalk; occasional flint nodule | | 0.60-1.00 |
| 123005 | layer | natural; compact chalk; common flint nodules | | 1.00+ |



| Test pit 1231 | | test pit dimensions (m) | 3.0 x 0.6 x 2.9 |
|----------------|--------------|---|-----------------|
| context number | context type | description | depth bgl (m) |
| 123101 | layer | topsoil; very dark brown loam; imported | 0-0.25 |
| 123102 | layer | made-ground; demolition debris; sand & gravel; concrete; abundant chalk peagrit | 0.25-0.60 |
| 123103 | layer | made-ground; chalk | 0.60-1.50 |
| 123104 | layer | natural; compact chalk; common subrounded flint nodules | 1.50-2.90 |

| Test pit 1232 | | test pit dimensions (m) | 3.0 x 0.6 x 3.0 |
|----------------|--------------|--|-----------------|
| context number | context type | description | depth bgl (m) |
| 123201 | layer | topsoil; mid brown loam | 0-0.15 |
| 123202 | layer | made-ground; very mixed chalk & brown loam; building debris | 0.15-0.50 |
| 123203 | layer | subsoil; orange-brown silty-clay; abundant subangular flint, poorly sorted | 0.50-0.90 |
| 123204 | layer | natural; compact chalk; occasional flint nodules | 0.90+ |

| Test pit 1233 | | test pit dimensions (m) | 3.0 x 0.6 x 3.0 |
|----------------|--------------|---|-----------------|
| context number | context type | description | depth bgl (m) |
| 123301 | layer | topsoil; mid brown loam | 0-0.20 |
| 123302 | layer | made-ground; demolition debris | 0.20-0.50 |
| 123303 | layer | made-ground; degraded chalk; occasional building debris | 0.50-1.50 |
| 123304 | layer | natural; compact chalk; slightly softer at depth; rounded flint nodules | 1.50+ |

| Test pit 1234 | | test pit dimensions (m) | 3.6 x 0.8 x 2.0 |
|----------------|--------------|--|-----------------|
| context number | context type | description | depth bgl (m) |
| 123401 | layer | surface; thick, heavy tarmac | 0-0.175 |
| 123402 | layer | bedding; crushed & mixed concrete | 0.175-0.37 |
| 123403 | layer | fill of 123404; orange-brown silty-clay; occasional subangular flint; modern glass | 1.00-1.30 |
| 123404 | layer | drain run; linear; straight sided; 0.6m wide | 1.00-1.30 |
| 123405 | layer | natural; degraded chalk; occasional flint nodules | 0.37-1.50 |
| 123406 | layer | natural; compact chalk; common flint nodules & boulders | 1.50-2.00 |

| Test pit 1235 | | test pit dimensions (m) | 3.0 x 0.6 x 3.0 |
|-----------------|--------------|---------------------------------------|-----------------|
| context number | context type | description | depth bgl (m) |
| 123501 | layer | made-ground; demolition debris | 0-0.40 |
| 123502 | layer | natural; degraded chalk | 0.40-1.00 |
| 123503 | layer | natural; compact chalk; flint nodules | 1.00+ |
| comments | no topsoil | | |



| Test pit 1236 | | test pit dimensions (m) | 2.7 x 0.6 x 3.0 |
|----------------|--------------|---|-----------------|
| context number | context type | description | depth bgl (m) |
| 123601 | layer | topsoil; mid brown silty loam | 0-0.10 |
| 123602 | layer | made-ground; series dump layers; demolition debris; coal, metal, glass; occasional chalk; mottled with silty loam | 0.10-1.30 |
| 123603 | layer | made-ground; mixed chalk & silty loam | 1.30-2.30 |
| 123604 | layer | natural; tabulated flint layer & mixed ?degraded chalk | 2.30+ |

| Test pit 1237 | | test pit dimensions (m) | 3.0 x 0.6 x 3.0 |
|----------------|-------------------|---|-----------------|
| context number | context type | description | depth bgl (m) |
| 123701 | layer | topsoil; mid brown loam; imported | 0-0.10 |
| 123702 | layer | made-ground; demolition debris | 0.10-0.25 |
| 123703 | layer | natural; degraded chalk; occasional flint nodules | 0.25-1.80 |
| 123704 | layer | natural; compact chalk; occasional flint nodules | 1.80+ |
| comments | asbestos (123702) | | |

| Test pit 1238 | | test pit dimensions (m) | 3.0 x 0.8 x 3.0 |
|----------------|--------------|---|-----------------|
| context number | context type | description | depth bgl (m) |
| 123801 | layer | surface; tarmac | 0-0.15 |
| 123802 | layer | bedding; type one gravel | 0.15-0.40 |
| 123803 | layer | natural; degraded chalk; occasional flint nodules | 0.40-1.00 |
| 123804 | layer | natural; compact chalk; common flint nodules | 1.00+ |

| Test pit 1239 | | test pit dimensions (m) | 3.0 x 0.6 x 2.6 |
|----------------|--------------|--|-----------------|
| context number | context type | description | depth bgl (m) |
| 123901 | layer | topsoil; dark brown; humic; imported | 0-0.30 |
| 123902 | layer | made-ground; mixed chalk, loam & brick | 0.30-1.30 |
| 123903 | layer | natural; compact chalk; flint nodules | 1.30+ |

| Test pit 1240 | | test pit dimensions (m) | 3.0 x 0.6 x 3.1 |
|----------------|--------------|---|-----------------|
| context number | context type | description | depth bgl (m) |
| 124001 | layer | topsoil; mid brown sandy loam; imported | 0-0.10 |
| 124002 | layer | made-ground; demolition debris; mixed silty chalk | 0.10-0.30 |
| 124003 | layer | natural; degraded chalk; flint | 0.30-1.00 |
| 124004 | layer | natural; compact chalk; dense flint bed at 2.00m | 1.00+ |



| Test pit 1241 | | test pit dimensions (m) | 3.0 x 0.6 x 3.0 |
|----------------|--------------|--|-----------------|
| context number | context type | description | depth bgl (m) |
| 124101 | layer | topsoil; mid brown silty loam | 0-0.15 |
| 124102 | layer | made-ground; mid-light brown chalky loam; domestic & building debris | 0.15-1.00 |
| 124103 | layer | made-ground; mid orange-brown silty-clay; common chalk; chalk lenses | 1.00-1.70 |
| 124104 | layer | subsoil; mid orange-brown loam; occasional flint gravel | 1.70-2.00 |
| 124105 | layer | natural; degraded chalk; occasional subrounded flint | 2.00-2.5 |
| 124106 | layer | natural; compact chalk | 2.50+ |

| Test pit 1242 | | test pit dimensions (m) | 2.5 x 1.0 x 3.0 |
|-----------------|------------------------------|---|-----------------|
| context number | context type | description | depth bgl (m) |
| 124201 | layer | topsoil; mid grey-brown loam | 0-0.15 |
| 124202 | layer | made-ground; mixed brown loam & building debris | 0.15-0.30 |
| 124203 | layer | natural; degraded chalk; occasional flint nodules | 0.30-1.20 |
| 124204 | layer | natural; compact chalk; common flint nodules | 1.20+ |
| comments | pipe trench evident at 0.90m | | |

| Test pit 1254 | | test pit dimensions (m) | 3.5 x 0.65 x 3.0 |
|-----------------|-------------------------------|--|------------------|
| context number | context type | description | depth bgl (m) |
| 125401 | layer | topsoil; mid brown silty loam | 0-0.15 |
| 125402 | layer | surface; path (concrete slabs) | 0-0.15 |
| 125403 | layer | made-ground; building debris & chalky loam | 0.15-1.00 |
| 125404 | layer | natural; degraded chalk | 1.00-1.50 |
| 125405 | layer | compact chalk; iron panning at 2.00m | 1.50+ |
| comments | trench lengthened due to path | | |

| Test pit 1255 | | test pit dimensions (m) | 3.0 x 0.6 x 2.8 |
|-----------------|---|--|-----------------|
| context number | context type | description | depth bgl (m) |
| 125501 | layer | topsoil; mid brown silty loam | 0-0.10 |
| 125502 | layer | made-ground; series of lenses; chalk; building debris; orange-brown silty clay; subangular flint; black (burnt) wood & nails | 0.10-0.70 |
| 125503 | layer | natural; compact chalk; common flint nodules | 0.70-2.8 |
| comments | service trench including large diameter pipe on west side of test pit | | |



| Test pit 1256 | | test pit dimensions (m) | 2.9 x 0.6 x 3.0 |
|----------------|--------------|---|-----------------|
| context number | context type | description | depth bgl (m) |
| 125601 | layer | surface; degraded tarmac | 0-0.05 |
| 125602 | layer | bedding; mixed gravels | 0.05-0.15 |
| 125603 | layer | made-ground; series of lenses; mixed orange-brown loam; common abundant chalk peagrit to pebble subangular flint; poorly sorted | 0.15-1.70 |
| 125604 | layer | natural; degraded chalk; occasional flint | 1.70-2.80 |
| 125605 | layer | natural; compact chalk; flint nodules | 2.80+ |

| Test pit 1257 | | test pit dimensions (m) | 3.0 x 0.6 x 1.9 |
|----------------|--------------|--|-----------------|
| context number | context type | description | depth bgl (m) |
| 125701 | layer | topsoil; mid brown loam | 0-0.15 |
| 125702 | layer | made ground; lens demolition debris | 0.15-0.80 |
| 125703 | layer | made-ground; redeposited chalk; occasional brick & building debris | 0.80-1.90 |
| 125704 | layer | natural; compact chalk; occasional flint nodule | 1.90+ |

| Test pit 1258 | | test pit dimensions (m) | 3.0 x 0.6 x 3.0 |
|----------------|--------------|---|-----------------|
| context number | context type | description | depth bgl (m) |
| 125801 | layer | topsoil; mid brown loam | 0-0.15 |
| 125802 | layer | made-ground; demolition debris | 0.15-0.60 |
| 125803 | layer | made-ground; degraded chalk; occasional flint nodule; brick | 0.60-1.30 |
| 125804 | layer | natural; compact chalk; occasional flint nodule; seam tabulated flint | 1.30+ |

| Test pit 1260 | | test pit dimensions (m) | 3.0 x 0.6 x 3.0 |
|----------------|--------------|---|-----------------|
| context number | context type | description | depth bgl (m) |
| 126001 | layer | topsoil; mid-dark brown silty loam; occasional slate & brick fragment | 0-0.60 |
| 126002 | layer | natural; degraded chalk; occasional flint nodules | 0.60-1.50 |
| 126003 | layer | natural; compact chalk; occasional flint nodules | 1.50+ |

| Test pit 1261 | | test pit dimensions (m) | 3.0 x 0.6 x 3.0 |
|-----------------|---------------------|---|-----------------|
| context number | context type | description | depth bgl (m) |
| 126101 | layer | topsoil; dark humic sandy loam | 0-0.05 |
| 126102 | layer | made-ground; degraded, friable chalk; rare dark mottling; flint | 0.05-2.00 |
| 126103 | layer | made-ground; compact chalk; flint nodules | 2.00-2.70 |
| 126104 | layer | made-ground; lens dark brown humic loam; common chalk fragments | 2.70+ |
| comments | natural not reached | | |



| Test pit 1262 | | test pit dimensions (m) | 3.0 x 0.6 x 3.0 |
|----------------|--------------|--|-----------------|
| context number | context type | description | depth bgl (m) |
| 126201 | layer | topsoil; mid brown silty loam; occasional chalk peagrit | 0-0.10 |
| 126202 | layer | made-ground; degraded chalk; occasional flint nodules | 0.10-1.10 |
| 126203 | layer | ?natural; lens orange-brown silty loam; frequent subangular gravel | 1.10-1.20 |
| 126204 | layer | natural; compact chalk; abundant flint nodules & boulders | 1.20+ |

| Test pit 1263 | | test pit dimensions (m) | 0.6 x 0.6 x 1.0 |
|-----------------|-------------------------------|---|-----------------|
| context number | context type | description | depth bgl (m) |
| 126301 | layer | topsoil; mid brown loam; occasional flint peagrit | 0-0.10 |
| 126302 | layer | ?natural; degraded chalk | 0.10-1.00 |
| comments | hand dug; up against building | | |

| Test pit 1264 | | test pit dimensions (m) | 0.6 x 0.6 x 0.5 |
|-----------------|-------------------------------|---|-----------------|
| context number | context type | description | depth bgl (m) |
| 126401 | layer | topsoil; pale-mid brown silty-loam; rare chalk flecks | 0-0.10 |
| 126402 | layer | made-ground; very mixed chalk & silty loam | 0.10-0.50 |
| comments | hand dug; natural not reached | | |

| Test pit 1265 | | test pit dimensions (m) | 3.0 x 0.6 x 3.0 |
|----------------|--------------|---|-----------------|
| context number | context type | description | depth bgl (m) |
| 126501 | layer | topsoil; imported; mid pale brown loam; common chalk flecks | 0-0.15 |
| 126502 | layer | made-ground; chalk & mixed loam; occasional building debris | 0.15-0.60 |
| 126503 | layer | made-ground; orange-brown silty loam | 0.60-1.00 |
| 126504 | layer | natural; degraded chalk; occasional flint nodule | 1.0-1.60 |
| 126505 | layer | natural; compact chalk; occasional flint nodule | 1.60+ |

| Test pit 1266 | | test pit dimensions (m) | 2.8 x 0.6 x 3.0 |
|----------------|--------------|--|-----------------|
| context number | context type | description | depth bgl (m) |
| 126601 | layer | topsoil; grey-brown silty loam; occasional small chalk fragments | 0-0.10 |
| 126602 | layer | natural; degraded white chalk; soft; occasional flint nodules | 0.10-1.20 |
| 126603 | layer | natural; compact chalk; common flint nodules | 1.20+ |

| Test pit 1267 | | test pit dimensions (m) | 1.0 x 1.0 x 1.0 |
|-----------------|-------------------------------|--|-----------------|
| context number | context type | description | depth bgl (m) |
| 126701 | layer | topsoil; mid grey-brown loam | 0-0.10 |
| 126702 | layer | made-ground; mixed very pale greyish-white chalk & demolition debris | 0.10-1.0 |
| comments | hand dug; natural not reached | | |



Part B

Larkhill Camp



5 PART B – LARKHILL CAMP

5.1 The Site

- 5.1.1 An archaeological watching brief was maintained during geotechnical test-pitting at Larkhill Camp, Durrington, Wiltshire, centred on NGR 412920 144700 ('the Site' in **Part B**) (**Figure 3**).
- 5.1.2 The Site is located within Larkhill Camp, a military facility on the Salisbury Plain Defence Training Estates. The camp is situated approximately 3km north-west of Amesbury, and 1.9km north of Stonehenge.
- 5.1.3 Currently home to the Royal School of Artillery, the facility contains a considerable number of buildings and open areas of varied forms and functions, structured around a rectilinear gridded street plan.
- 5.1.4 The main arterial route, the Packway, traverses the southern part of the Site, and defines the northern boundary of the World Heritage Site of *Stonehenge, Avebury and Associated Sites*.
- 5.1.5 Largely self-contained, the facility is set amid the open and undeveloped expanse of Salisbury Plain. Several fields around the camp are under arable cultivation, though much of the landscape to the north forms part of the military training grounds. A number of plantations are located around the perimeter of the camp.
- 5.1.6 The Site comprised an irregular parcel of land of approximately 165.5ha, within a gently undulating landscape at an elevation of around 125m aOD.
- 5.1.7 The underlying geology is mapped as Cretaceous Chalk of the Seaford and Newhaven Chalk Formations, overlain by deposits of clay, silt sand and gravel (British Geological Survey online viewer).

5.2 Archaeological background

Introduction

- 5.2.1 A detailed historical and archaeological background has been produced in a site-specific desk-based assessment, and summarised in the WSI (WA 2014b; 2014i). A summary is provided below.
- 5.2.2 A more general archaeological background relevant to all four Sites is summarised in Section 3.5.

Recent investigations

- 5.2.3 Approximately 9ha of the southernmost part of the Site lies within the *Stonehenge, Avebury and Associated Sites* world heritage site boundary.
- 5.2.4 Previous investigations within the Site have been relatively small in scale and have produced little evidence of archaeological significance. Findings comprise considerable evidence for modern activity relating to development within the military camp.
- 5.2.5 The desk-based assessment (WA 2014i) identified no overriding heritage constraints likely to prohibit development, though potential adverse effects were noted. It was established that development has the potential to affect the archaeological and historic environment resources both Scheduled and undesignated, which include prehistoric funerary



monuments, settlements and field systems, as well as the Historic Landscape Character of the wider landscape.

- 5.2.6 The military history of the Site was also considered to be of significance, whilst the buried remains of other periods may also be encountered. Potential adverse effects include direct (primary) and/or indirect (secondary) impacts resulting in the physical loss of part or all of an asset, and/or changes to its setting.
- 5.2.7 Specific concerns were raised that the potential development may directly impact upon the Scheduled Neolithic long barrow located within the Site (see below). It was envisaged that, overall, the Site may be able to accommodate new development without having an unacceptably adverse impact upon the cultural heritage resource.

Known archaeology

- 5.2.8 A well-preserved Neolithic/early Bronze Age long barrow of national significance (SM No. 1012167) is located immediately to the north of the Packway. Other features on the Site include a series of Late Neolithic to Early Bronze Age pits, and a probable Late Bronze Age post-built structure with an associated fence line.
- 5.2.9 Previous investigations have noted extensive modern disturbance, and the remains of a series of mid-20th century military structures.

5.3 Results (Larkhill)

Summary

- 5.3.1 Tabulated comprehensive descriptions and observations for the 50 test pits can be found in Section 5.4.
- 5.3.2 No features or deposits of archaeological interest were encountered. The results are summarised below and illustrated in **Figure 3**.

Deposit sequences

- 5.3.3 The natural geology below the Site comprises solid chalk, with flint nodules occurring randomly and in discrete seams. In most examples the upper extents of the chalk was much degraded, becoming less discoloured and more compact with depth. The top of the natural geology was encountered at varying depths, from 0.18m to 2m (average 0.54m) below ground level (bgl). The shallowest examples were identified in Test pit **1350** (where no truncation or made-ground was evident – at the northern end of the Site) and test pits **1353, 1358, 1377, 1380 and 1383** (where there truncation encroached deeply into the chalk, i.e. across much of the Site).
- 5.3.4 The natural chalk was not reached in four test pits (**1340, 1365, 1367, and 1367a**), each revealing moderate depths of made-ground. Two test pits, within the motocross area between Watson Road and Brackenbury Road, were cut into material including large pieces of mixed building debris.
- 5.3.5 The upper, more degraded chalk was seen in four test pits, three of which comprised only unadulterated natural deposits (**1345** – south-east of the junction between Watson Road and Brackenbury Road; **1350** and **1351** – northern recreation ground), whilst the fourth (**1352**) was a below over a metre of made-ground and a buried topsoil (just south of the Royal Aircraft Establishment). The deposit varied between 0.19m and 0.80m thick (average 0.44m). The presence of this deposit is considered to be indicative of a relative lack of truncation.



- 5.3.6 The remaining 40 test pits lacked the degraded natural chalk layer, suggesting that fairly substantial ground reduction had occurred across the majority of monitored areas.
- 5.3.7 A layer of light to dark grey-brown silty clay loam topsoil was recorded in 44 test pits ranging between 0.10m and 0.40m deep (average 0.24m). The depth associated with a complete relatively undisturbed natural soil sequence was around 0.20–0.30m, whilst over truncated natural, most topsoil deposits were about 0.4m. Where there was made-ground topsoil was usually between 0.10m and 0.20m thick.
- 5.3.8 Various made-ground layers were observed in 22 test pits, predominantly comprising demolition debris and in some cases redeposited chalk. Made-ground layers/sequences (c. 0.15m–2.20m; average 0.92m) were present between the topsoil or surface/bedding material and the natural geology.
- 5.3.9 Abandonment of test pit excavation was most commonly due to the extremely compact nature of the chalk; concrete obstructions were also encountered.

Modern utilities and contamination

- 5.3.10 A possible service trench was identified in Test pit **1385**. Deposits contaminated by asbestos were seen in six test pits (**1341**, **1344**, **1345**, **1349**, **1353** and **1385**), mostly concentrated in the area between Power Road and Brackenbury Road (**Figure 3**).

Overview

- 5.3.11 The Larkhill Camp watching brief found some examples of original soil horizons and it is here (see above; **Figure 3**) that the potential for the survival of archaeological remains can be considered to be **moderate** to **high**. The rest of the investigated areas were found to have been extensively truncated via landscaping. As such the potential survival of buried archaeological remains is considered to be **low** in these areas.

5.4 Test pit summaries (Larkhill)

KEY: bgl – below ground level; Dc – discreet congregations of joint-bounded blocks of unweathered chalk; separated by deeply weathered matrix; Dm – small, essentially unweathered angular blocks of chalk, set in a matrix of deeply weathered chalk

| Test pit 1339 | | site sub-division | TP 1339 – motocross track | |
|------------------|--------------|--|---------------------------|---------------|
| | | test pit dimensions (m) | 4.1 x 0.6 x 3.1 | |
| context number | context type | description | | depth bgl (m) |
| 133901 | layer | made-ground; mid grey sand with common subangular stone (type 1) on surface; friable; distinct horizon | | 0–0.25 |
| 133902 | layer | made-ground; redeposited chalk; off-white & grey clay; common subrounded flint <200mm; very compact; distinct horizon | | 0.25–0.80 |
| 133903 | layer | made-ground; dark brown silty-clay; common subangular flint <150mm; sparse chalk flecks & fragments; friable; distinct horizon | | 0.80–1.30 |
| 133904 | layer | made-ground; off-white chalk; sparse subangular flint <100mm; abundant light brown sand & peagrit; loose; distinct horizon | | 1.30-1.90 |
| 133905 | layer | natural; off-white chalk with rare subrounded flint nodules <300mm; compact; distinct horizon | | 1.90+ |



| Test pit 1340 | | site sub-division | TP 1340 – motocross track |
|----------------|-----------------------------|---|---------------------------|
| | | test pit dimensions (m) | 4.0 x 0.6 x 3.0 |
| context number | context type | description | depth bgl (m) |
| 134001 | layer | made-ground; mid grey clay with abundant chalk flecks & fragments; common subangular flint <150mm; brick, concrete, tarmac; fairly compact; distinct horizon (terram) | 0–1.30 |
| 134002 | layer | made-ground; dark brown silty-clay with common chalk flecks & fragments; rare subangular flints<100mm; bricks, concrete, tyres, pipe-collars; friable; distinct horizon | 1.30+ |
| comments | natural geology not reached | | |

| Test pit 1341 | | site sub-division | TP 1341 – Horne barracks |
|----------------|--|--|--------------------------|
| | | test pit dimensions (m) | 4.0 x 0.6 x 2.0 |
| context number | context type | description | depth bgl (m) |
| 134101 | layer | topsoil; turfed; light grey-brown silty-clay loam with rare subangular flint <80mm; common subrounded chalk flecks & fragments; loose; distinct horizon | 0–0.10 |
| 134102 | layer | made-ground; mix of dark grey-brown silty-clay & off-white clayey chalk; rare subrounded flint <200mm; layer of orange sand at 0.6m; friable; distinct horizon | 0.10–1.10 |
| 134103 | layer | made-ground; off-white chalk, tabular; friable; rare subrounded flint nodules <300mm; distinct horizon; 150mm clay pie at 1.6m | 1.10–1.70 |
| 134104 | layer | natural; off-white chalk; rare subrounded flint nodules <400mm; compact; distinct horizon | 1.70+ |
| comments | metal 'starting rod' (134101); asbestos roofing (134102) | | |

| Test pit 1342 | | site sub-division | TP 1342 – Horne barracks |
|----------------|--------------|--|--------------------------|
| | | test pit dimensions (m) | 3.8 x 0.6 x 2.8 |
| context number | context type | description | depth bgl (m) |
| 134201 | layer | topsoil; light grey-brown silty-clay loam; loose; distinct horizon | 0–0.12 |
| 134202 | layer | made-ground; off-white chalk with rare subrounded flint <60mm; compact; distinct horizon | 0.12–0.50 |
| 134203 | layer | made-ground; dark brown silty-clay; sparse subrounded chalk flecks & fragments; brick; friable; distinct horizon | 0.50–0.95 |
| 134204 | layer | natural; off-white clayey chalk; rare subrounded flint nodules <300mm; compact; distinct horizon | 0.95+ |

| Test pit 1343 | | site sub-division | TP 1343 |
|----------------|--------------|---|-----------------|
| | | test pit dimensions (m) | 3.5 x 0.6 x 2.7 |
| context number | context type | description | depth bgl (m) |
| 134301 | layer | topsoil; mid grey-brown silty loam; common subangular chalk fragments; sparse subangular flint <60mm; homogenous; friable; distinct horizon | 0–0.40 |
| 134302 | layer | natural; off-white tabular chalk; moderate rounded flint nodules <300mm; very compact; distinct horizon | 0.40+ |



| Test pit 1344 | | site sub-division | TP 1344 |
|-----------------|--------------|---|-----------------|
| | | test pit dimensions (m) | 3.3 x 0.6 x 2.4 |
| context number | context type | description | depth bgl (m) |
| 134401 | layer | topsoil; mid brown-grey silty-clay loam; common subangular flint <60mm; very common subangular chalk fragments; friable; distinct horizon | 0–0.40 |
| 134402 | layer | natural; off-white chalk; sparse subrounded flint nodules <300mm; compact; distinct horizon | 0.40+ |
| comments | | asbestos (134401) | |

| Test pit 1345 | | site sub-division | TP 1345 |
|-----------------|--------------|--|-----------------|
| | | test pit dimensions (m) | 3.4 x 0.6 x 2.8 |
| context number | context type | description | depth bgl (m) |
| 134501 | layer | topsoil; mid grey-brown silty-clay loam; common subangular chalk; common subrounded flint <200mm; bioturbated; friable; distinct horizon | 0–0.25 |
| 134502 | layer | natural; degraded upper chalk; white & grey; rare subrounded flint nodules; compact; diffuse horizon | 0.25–0.44 |
| 134503 | layer | natural; off-white subangular chalk, tabular; sparse subrounded flint nodules <400mm; compact; distinct horizon | 0.44+ |
| comments | | asbestos (134501) | |

| Test pit 1346 | | site sub-division | TP 1346 |
|-----------------|--------------|---|------------------|
| | | test pit dimensions (m) | 0.4 x 0.4 x 0.75 |
| context number | context type | description | depth bgl (m) |
| 134601 | layer | topsoil; mid grey-brown silty-clay loam; rare subangular flint <60mm; sparse subrounded chalk flecks & fragments; bioturbated; loose; diffuse horizon | 0–0.10 |
| 134602 | layer | made-ground; dark grey-brown silty-clay; common subangular chalk <100mm; sparse subangular flint <100mm; bioturbated; loose; diffuse horizon | 0.10–0.70 |
| 134603 | layer | natural; off-white chalk; rare sub-rounded flint <150mm; compact; distinct horizon | 0.70+ |
| comments | | hand dug | |

| Test pit 1347 | | site sub-division | TP 1347 |
|-----------------|--------------|--|--------------------|
| | | test pit dimensions (m) | 0.45 x 0.45 x 0.90 |
| context number | context type | description | depth bgl (m) |
| 134701 | layer | topsoil; dark grey-brown silty-clay loam; rare subangular flint <50mm; rare chalk fragments; homogenous; loose; distinct horizon | 0–0.10 |
| 134702 | layer | made-ground; light grey silty-clay; common subrounded chalk fragments; moderate subangular flint <100mm; friable; distinct horizon | 0.10–0.65 |
| 134703 | layer | natural; off-white chalk; rare subrounded flint <200mm; compact; distinct horizon | 0.65+ |
| comments | | hand dug | |



| Test pit 1348 | | site sub-division | TP 1348 |
|----------------|--------------|--|--------------------|
| | | test pit dimensions (m) | 0.45 x 0.40 x 0.60 |
| context number | context type | description | depth bgl (m) |
| 134801 | layer | topsoil; light grey-brown silty-clay loam; heavily bioturbated; sparse subrounded chalk flecks & fragments; sparse subrounded flint <60mm; loose; distinct horizon | 0–0.12 |
| 134802 | layer | made-ground; redeposited chalk; compact; distinct horizon | 0.12–0.22 |
| 134803 | layer | made-ground; light grey silty-clay; bioturbated; sparse subrounded chalk flecks & fragments; rare subrounded flint <80mm; friable; distinct horizon | 0.22–0.50 |
| 134804 | layer | natural; off-white chalk; rare subrounded flint nodules <150mm; compact; distinct horizon | 0.50+ |
| comments | hand dug | | |

| Test pit 1349 | | site sub-division | TP 1349 |
|----------------|-----------------------------|--|--------------------|
| | | test pit dimensions (m) | 0.45 x 0.24 x 0.90 |
| context number | context type | description | depth bgl (m) |
| 134901 | layer | topsoil; turfed; dark grey-brown silty-clay loam; rare subrounded flint & chalk <60mm; loose; distinct horizon | 0–0.10 |
| 134902 | layer | made-ground; light grey silty-clay; common chalk flecks & fragments; sparse subangular flint <100mm; friable; distinct horizon | 0.10–0.70 |
| 134903 | layer | natural; off-white chalk; rare rounded flint <100mm | 0.70+ |
| comments | hand dug; asbestos (134901) | | |

| Test pit 1350 | | site sub-division | TP 1350 |
|----------------|---|---|-----------------|
| | | test pit dimensions (m) | 3.8 x 0.6 x 2.0 |
| context number | context type | description | depth bgl (m) |
| 135001 | layer | topsoil; dark grey-brown silty-clay loam; common subrounded chalk; common subangular flint <60mm; friable; distinct horizon | 0–0.18 |
| 135002 | layer | natural; degraded white upper chalk; sparse subangular flint <200mm; friable; distinct horizon | 0.18–0.40 |
| 135003 | layer | natural; white tabular chalk; sparse subrounded flint nodules; very compact; distinct horizon | 0.40+ |
| comments | abandoned at 2m bgl as chalk too compact to machine | | |

| Test pit 1351 | | site sub-division | TP 1351 |
|----------------|--------------|---|-----------------|
| | | test pit dimensions (m) | 3.3 x 0.6 x 2.9 |
| context number | context type | description | depth bgl (m) |
| 135101 | layer | topsoil; dark brown-grey silty-clay loam; common subrounded flint <60mm; common chalk flecks & fragments; loose; distinct horizon | 0–0.30 |
| 135102 | layer | natural; off-white degraded upper chalk; rare subrounded flint <100mm; friable; distinct horizon | 0.30–1.10 |
| 135103 | layer | natural; off-white tabular chalk; rare subrounded flint nodules <300mm | 1.10+ |



| Test pit 1352 | | site sub-division | TP 1352 |
|----------------|-----------------------|---|-----------------|
| | | test pit dimensions (m) | 3.0 x 0.6 x 2.5 |
| context number | context type | description | depth bgl (m) |
| 135201 | layer | topsoil; dark grey-brown silt-clay loam; common subangular chalk flecks & fragments; common subangular flint <60mm; friable; distinct horizon | 0–0.18 |
| 135202 | layer | subsoil/made-ground; light grey silty-clay; very common subangular chalk flecks; common subangular flint <100mm; friable; distinct horizon | 0.18–0.56 |
| 135203 | layer | made-ground; off-white chalk; rare subrounded flint <150mm; friable; distinct horizon; bank material from tennis court construction | 0.56–1.00 |
| 135204 | layer | buried topsoil; dark grey-brown silty-clay; sparse subangular flint <60mm; sparse subrounded chalk fragments; friable; distinct horizon | 1.00–1.15 |
| 135205 | layer | natural; degraded upper chalk; off-white; sparse subrounded flint nodules; compact; distinct horizon | 1.15–1.70 |
| 135206 | layer | natural; off-white chalk; large subangular lumps, tabular; rare subrounded flint nodules; compact; distinct horizon | 1.70+ |
| comments | at the base of a bank | | |

| Test pit 1353 | | site sub-division | TP 1353 |
|----------------|---|---|-----------------|
| | | test pit dimensions (m) | 2.7 x 0.6 x 2.2 |
| context number | context type | description | depth bgl (m) |
| 135301 | layer | topsoil; mid grey-brown silty loam; common subangular chalk fragments; common subangular flints <60mm; loose; distinct horizon; bioturbated | 0–0.20 |
| 135302 | layer | natural; off-white tabular chalk; rare rounded flint nodules <300mm; compact; distinct horizon | 0.20+ |
| comments | asbestos (135301); stopped as chalk too hard to machine | | |

| Test pit 1354 | | site sub-division | north of Gibraltar Battery |
|----------------|--------------|---|----------------------------|
| | | test pit dimensions (m) | 3.3 x 0.6 x 2.5 |
| context number | context type | description | depth bgl (m) |
| 135401 | layer | topsoil; dark grey-brown silty-clay loam; rare subangular flint <60mm; sparse subrounded chalk fragments; loose; distinct horizon | 0–0.20 |
| 135402 | layer | made-ground; mid grey-brown silty-clay; common chalk fragments; bricks; friable; distinct horizon | 0.20–0.48 |
| 135403 | layer | natural; off-white chalk; rare subrounded flint nodules; compact; distinct horizon; Dm to 1.8m, then Dc | 0.48+ |

| Test pit 1355 | | site sub-division | |
|----------------|--------------|--|-----------------|
| | | test pit dimensions (m) | 3.8 x 0.6 x 3.0 |
| context number | context type | description | depth bgl (m) |
| 135501 | Layer | Topsoil; dark grey brown silty clay loam with rare subangular flint <0.06m; sparse chalk flecks & fragments; bricks; concrete; compact; distinct horizon | 0-0.20 |
| 135502 | Layer | Made-ground; mid brown silty clay, abundant sub rounded chalk flecks and fragments; bricks; concrete; compact; distinct horizon. | 0.20-0.85 |
| 135503 | Natural | Natural; off-white chalk with very rare sub rounded flint <0.30m; compact; distinct horizon. Dm chalk to 1.65m thereafter Dc chalk | 0.85m+ |



| Test pit 1356 | | site sub-division | 18 (Quebec 1759) Battery- south of Roberts Barracks |
|-----------------------|---------------------|---|---|
| | | test pit dimensions (m) | 3.0 x 0.60 x 3.0 |
| context number | context type | description | depth bgl (m) |
| 135601 | layer | topsoil; dark grey brown silty clay loam with rare subangular flint <0.07m; sparse subrounded chalk flecks & fragments; loose; distinct horizon | 0-0.20 |
| 135602 | layer | made-ground; redeposited white chalk; compact; distinct horizon | 0.20-0.30 |
| 135603 | layer | made-ground; mid brown silty clay with abundant sub rounded chalk fragments; bricks; concrete; compact; distinct horizon | 0.30-0.60 |
| 135604 | natural | off-white chalk with rare subrounded flint <0.40m; compact; distinct horizon; Dm chalk to 1.70m then Dc chalk there after | 0.60+ |

| Test pit 1357 | | site sub-division | Robert Barracks |
|-----------------------|---------------------|---|----------------------|
| | | test pit dimensions (m) | 2.50 x 0.60 x 2.50 |
| context number | context type | description | depth bgl (m) |
| 135701 | Layer | Topsoil; dark grey brown silty clay loam with rare subangular flint <0.06m; sparse chalk flecks & fragments; loose; distinct horizon. | 0-0.15 |
| 135702 | Layer | Made-ground; mid grey brown silty clay with common chalk fragments; common metal wires; friable; distinct horizon. | 0.15- 0.60 |
| 135703 | Natural | Off-white clayey chalk with rare subrounded flint nodules<0.30m; compact distinct horizon. Changes from Dc chalk to Dm chalk at 1.40m | 0.60+ |

| Test pit 1358 | | site sub-division | Roberts Barracks |
|-----------------------|---------------------|---|----------------------|
| | | test pit dimensions (m) | 3.50 x 0.60 x 3.0 |
| context number | context type | description | depth bgl (m) |
| 135801 | Layer | Topsoil; dark grey brown silty clay with rare subangular flint <0.08m; rare chalk flecks; heavily bioturbated; loose; distinct horizon. | 0-0.20 |
| 135802 | Natural | Off-white chalk with rare flint nodules sub rounded sub rounded <0.40m; compact; distinct horizon; Dm to 0.70m then Dc beyond that | 0.20+ |

| Test pit 1359 | | site sub-division | Roberts Barracks |
|-----------------------|---------------------|---|----------------------|
| | | test pit dimensions (m) | 3.0 x 0.60 x 2.3 |
| context number | context type | description | depth bgl (m) |
| 135901 | layer | topsoil; dark grey brown silty clay loam with rare chalk flecks & fragments; rare subangular flint< 0.06m; loose; distinct horizon. | 0-0.10 |
| 135902 | layer | made-ground; light grey silty clay with common chalk flecks & fragments; bricks; concrete; rare subrounded flint <0.20m; compact. | 0.10-2.0 |
| 135903 | natural | off-white tabular chalk with rare subrounded flint <0.30m ; very compact; distinct horizon | 2.0+ |



| Test pit 1360 | | site sub-division | N.R. Young Officers Mess |
|----------------|--------------|---|--------------------------|
| | | test pit dimensions (m) | 4.0 x 0.60 x 2.9 |
| context number | context type | description | depth bgl (m) |
| 136001 | layer | topsoil; dark grey brown silty clay loam with rare subangular flint <0.1m; sparse subrounded chalk flecks and fragments; friable; distinct horizon. | 0-0.26m |
| 136002 | natural | off-white chalk with rare well sorted subrounded flint nodules <0.4m; compact; distinct horizon; Dm to 1.8m then Dc. | 0.26m+ |

| Test pit 1361 | | site sub-division | South of Roberts Barracks |
|----------------|--------------|--|---------------------------|
| | | test pit dimensions (m) | 3.3 x 0.6 x 2.8 |
| context number | context type | description | depth bgl (m) |
| 136101 | layer | topsoil; dark grey brown silty clay loam with sparse subangular flint <0.1; rare chalk flecks and fragments; friable distinct horizon. | 0-0.25 |
| 13602 | layer | made-ground; mid brown silty clay with abundant chalk flecks and fragments; bricks; concrete; compact distinct horizon. | 0.25-0.4 |
| 136103 | natural | off-white chalk with very rare well sorted subrounded flint nodules <0.3m; compact; distinct horizon; Dm to 1.6m then Dc. | 0.4 + |

| Test pit 1362 | | site sub-division | Medical Centre |
|----------------|--------------|---|-----------------|
| | | test pit dimensions (m) | 3.7 x 0.6 x 2.7 |
| context number | context type | description | depth bgl (m) |
| 136201 | layer | topsoil; dark grey brown silty clay loam with rare subangular flint <0.09; rare chalk flecks and fragments; loose; distinct horizon | 0-0.15 |
| 136202 | layer | made-ground; light grey silty clay with very common chalk fragments; bricks; concrete; compact ;distinct horizon | 0.15-0.55 |
| 136203 | natural | off-white chalk with rare subrounded flint nodules <0.4m; compact; distinct horizon; Dm to 2m then Dc | 0.55+ |

| Test pit 1363 | | site sub-division | TP 1363 |
|----------------|--------------|--|-----------------|
| | | test pit dimensions (m) | 3.6 x 0.6 x 3.0 |
| context number | context type | description | depth bgl (m) |
| 136301 | layer | made-ground; light grey silty clay with abundant subrounded chalk flecks & fragments; bricks; tarmac; common subrounded flint < 0.30; metal; wood; friable; distinct horizon- terram. | 0-0.7 |
| 136302 | layer | made-ground; light reddish brown silty clay with common subrounded chalk fragments; rare subangular flint <0.1m; becomes darker and more organic at 1.2m; loose; distinct; horizon; from 1.3m down lenses of chalk& greater frequency; lumps of brick & concrete; metal-old engine blocks; sheets. | 0.7+ |



| Test pit 1364 | | site sub-division | TP1364 |
|-----------------------|---------------------|---|----------------------|
| | | test pit dimensions (m) | 4.2 x 0.6 x 3.0 |
| context number | context type | description | depth bgl (m) |
| 136401 | layer | made-ground; scalplings; loose; distinct horizon. | 0-0.1 |
| 136402 | layer | made-ground; light grey brown sand with common subrounded flint <0.06m; brick fragments; cables; terram; wood; loose; distinct horizon. | 0.1-0.55 |
| 136403 | layer | made-ground; black sand with very abundant subrounded stone; loose; distinct horizon. | 0.55-0.9 |
| 136404 | layer | made-ground; off-white chalk, compact; distinct horizon. | 0.9-1.1 |
| 136405 | layer | made-ground; dark grey brown silty clay; bricks; friable; distinct horizon- terram. | 1.1-1.2 |
| 136406 | layer | made-ground; mid orange brown sand; loose; distinct horizon. | 1.2-1.5 |
| 136407 | layer | made-ground; dark grey brown silty clay; sparse subrounded chalk<0.10m; friable; distinct horizon. | 1.5-1.8 |
| 136408 | layer | made-ground; light grey silty clay with abundant subrounded chalk flecks & fragments; rare subangular flint <0.06m; barbed wire; loose; distinct horizon. | 1.8+ |

| Test pit 1365 | | site sub-division | TP1365 Motocross Track |
|-----------------------|--|--|------------------------|
| | | test pit dimensions (m) | 3.8 x 0.6 x 2.7 |
| context number | context type | description | depth bgl (m) |
| 136501 | layer | made-ground; light to mid grey silty clay; with common subrounded chalk flecks and fragments; abundant bricks & concrete slabs <1m x 1.5 x 0.3; friable; distinct horizon- terram. | 0-0.9 |
| 136502 | layer | made-ground; dark grey brown silty clay with common subrounded chalk flecks and fragments; bricks; concrete;; friable; distinct horizon. | 0.9-1.8 |
| 136503 | layer | made-ground; light orange brown sand; bricks; loose; distinct horizon. | 1.8-2.2 |
| 136504 | layer | made-ground; dark brown silty clay with common subrounded chalk fragments & lumps; rare subangular flints <0.12m; bricks; metal; friable; distinct horizon. | 2.2+ |
| comments | abandoned due to concrete causing pit to narrow too much for bucket. | | |

| Test pit 1366 | | site sub-division | Home Barracks |
|-----------------------|---------------------|--|----------------------|
| | | test pit dimensions (m) | 3.2 x 0.6 x 3 |
| context number | context type | description | depth bgl (m) |
| 136601 | layer | topsoil; mid grey brown silty clay loam with abundant subangular flint <0.2; common chalk flecks & fragments; friable; distinct horizon. | 0-0.24 |
| 136602 | natural | off-white clayey chalk with rare subrounded flint nodules<0.4; compact; distinct horizon; blocky chalk. | 0.24+ |



| Test pit 1367 | | site sub-division | Horne Barracks |
|----------------|--------------|--|----------------|
| | | test pit dimensions (m) | 4.1 x 0.6 x 1 |
| context number | context type | description | depth bgl (m) |
| 136701 | Layer | Topsoil/made-ground; mid grey brown silty clay loam with moderate subrounded chalk flecks and fragments; friable ; distinct horizon; sparse subangular flint<0.06m; bricks; concrete | 0-0.2 |
| 136702 | Layer | Made-ground; grey offish white clayey chalk; bricks; large<1m lumps of concrete; rebar; compact; distinct horizon. | 0.2+ |
| comments | | abandoned as impossible to dig between/remove large lumps of concrete | |

| Test pit 1367A | | site sub-division | Motocross track |
|----------------|--------------|---|-----------------|
| | | test pit dimensions (m) | 3.6 x 0.6 x 2.8 |
| context number | context type | description | depth bgl (m) |
| 136703 | layer | topsoil; light grey brown silty clay loam with rare chalk flecks and fragments; friable; distinct horizon. | 0-0.1 |
| 136704 | layer | made-ground; mid grey brown silty clay; bricks; concrete; metal (including old mini); mesh; sacking; loose; distinct horizon. | 0.1+ |

| Test pit 1368 | | site sub-division | Horne Barracks |
|----------------|--------------|--|-----------------|
| | | test pit dimensions (m) | 3.4 x 0.6 x 2.2 |
| context number | context type | description | depth bgl (m) |
| 136801 | layer | topsoil; dark grey brown silty clay loam with sparse subrounded chalk flecks and fragments; rare subangular flints <0.1; loose; distinct horizon | 0-0.3 |
| 136802 | layer | degraded upper chalk; off-white moderate mid brown silty patches; rare subrounded flint <0.15; compact; distinct horizon | 0.3-0.7 |
| 136803 | natural | off-white chalk; Dm; rare subrounded flint nodules <0.4.;compact; distinct horizon; becomes dc at 1.4 | 0.7+ |

| Test pit 1369 | | site sub-division | Horne Barracks |
|----------------|--------------|---|----------------|
| | | test pit dimensions (m) | 3.1 x 0.6 x 3 |
| context number | context type | description | depth bgl (m) |
| 136901 | layer | topsoil; dark grey brown silty clay loam with rare subangular flint nodules<0,06m; sparse chalk flecks and fragments; loose distinct horizon. | 0-0.3 |
| 136902 | natural | off-white clayey chalk with rare subrounded flint <0.3m; compact; distinct horizon. Dc. | 0.3+ |

| Test pit 1370 | | site sub-division | Horne Barracks |
|----------------|--------------|--|----------------|
| | | test pit dimensions (m) | 3.7 x 0.6 x 3 |
| context number | context type | description | depth bgl (m) |
| 137001 | layer | topsoil; dark grey brown silty clay loam with sparse subrounded chalk flecks and fragments; rare subangular flints <0.1m; loose; distinct horizon. | 0-0.15 |
| 137002 | layer | made-ground; mid brown silty clay; common chalk flecks and fragments; friable; distinct horizon. | 0.15-0.6 |
| 137003 | natural | off-white clayey chalk with rare subrounded flint nodules <0.3m; compact; distinct horizon. | 0.6+ |



| Test pit 1371 | | site sub-division | Horne Barracks |
|----------------|--------------|--|-----------------|
| | | test pit dimensions (m) | 3.8 x 0.6 x 2.8 |
| context number | context type | description | depth bgl (m) |
| 137101 | layer | topsoil; light grey silty clay loam with sparse sub rounded chalk flecks and fragments; rare subangular flint <0.1; loose; distinct horizon. | 0-0.16 |
| 13702 | layer | made-ground; mix of dark grey silty clay and chalk; tarmac; bricks etc; loose distinct horizon. | 0.16-1.2 |
| 13703 | natural | off-white clayey chalk; Dm; rare sub rounded flint nodules <0.3; compact; distinct horizon; at 1.3m turns to Dc; very compact. | 1.2+ |

| Test pit 1372 | | site sub-division | Purvis Lines |
|----------------|--------------|--|---------------|
| | | test pit dimensions (m) | 3.8 x 0.6 x 3 |
| context number | context type | description | depth bgl (m) |
| 137201 | layer | topsoil; dark grey brown silty clay loam; common subrounded chalk flecks and fragments; rare subangular flint <0.1m; loose; bioturbated; distinct horizon. | 0-0.4 |
| 137202 | natural | off-white blocky clayey chalk with rare subangular flint <0.3m; compact; distinct horizon. | 0.4+ |

| Test pit 1373 | | site sub-division | Purvis Lines |
|----------------|--------------|---|---------------|
| | | test pit dimensions (m) | 3.4 x 0.6 x ? |
| context number | context type | description | depth bgl (m) |
| 137301 | layer | topsoil; mid grey brown silty clay loam with common subrounded chalk flecks and fragments; sparse subangular flint <0.1; loose; distinct horizon. | 0-0.3 |
| 137302 | natural | off-white blocky clayey chalk with rare subrounded flint nodules<0.3m; periglacial scarring; compact; distinct horizon | 0.3+ |

| Test pit 1374 | | site sub-division | Purvis Lines |
|----------------|--------------|--|---------------|
| | | test pit dimensions (m) | 3.9 x 0.6 x 3 |
| context number | context type | description | depth bgl (m) |
| 137401 | layer | topsoil; dark grey brown silty clay loam with common subangular flint< 0.1; sparse subrounded chalk flecks and fragments; loose; distinct horizon. | 0-0.32 |
| 137402 | natural | off-white blocky chalk with moderate subrounded flint <0.3m; periglacial scarring; compact; distinct horizon. | 0.32+ |

| Test pit 1375 | | site sub-division | Purvis Lines |
|----------------|--------------|---|---------------|
| | | test pit dimensions (m) | 4.3 x 0.6 x 3 |
| context number | context type | description | depth bgl (m) |
| 137501 | layer | topsoil; mid red brown silty clay loam with sparse subrounded chalk flecks and fragments; moderate subangular flint <0.1m; friable; distinct horizon. | 0-0.25 |
| 137502 | natural | degraded upper chalk with sparse subrounded flint nodules <0.4m; periglacial scarring; compact; distinct horizon. | 0.25+ |



| Test pit 1376 | | site sub-division | Purvis Lines |
|----------------|--------------|---|---------------|
| | | test pit dimensions (m) | 4.7 x 0.6 x 3 |
| context number | context type | description | depth bgl (m) |
| 137601 | layer | topsoil; dark grey brown silty clay loam with common subangular flint <0.1; common subrounded chalk flecks and fragments; friable; distinct horizon | 0-0.25 |
| 137602 | natural | off-white blocky/tabular clayey chalk with rare subrounded flint nodules <0.3m; compact; distinct horizon. | 0.25+ |

| Test pit 1377 | | site sub-division | Purvis Lines |
|----------------|--------------|--|---------------|
| | | test pit dimensions (m) | 3.8 x 0.6 x 3 |
| context number | context type | description | depth bgl (m) |
| 137701 | layer | made-ground; motocross track; light grey silty clay with common subrounded chalk flecks and fragments; sparse subangular flint <0.1m; friable; distinct horizon. | 0-0.2 |
| 137702 | natural | off-white chalk; Dm; rare subrounded flint nodules <0.3m; fairly compact; distinct horizon. | 0.2+ |

| Test pit 1378 | | site sub-division | Top Sports Field |
|----------------|--------------|--|------------------|
| | | test pit dimensions (m) | 3.3 x 0.6 x 3 |
| context number | context type | description | depth bgl (m) |
| 137801 | layer | topsoil; dark grey brown silty clay loam with common chalk flecks and fragments; rare sub angular flint <0.1m; friable; distinct horizon | 0-0.3 |
| 137802 | natural | off-white chalk; Dm; blocky; rare subrounded flint nodules < 0.3m; compact; distinct horizon | 0.3+ |

| Test pit 1379 | | site sub-division | Horse Paddocks- Nemain Rugby Pitch |
|----------------|--------------|---|------------------------------------|
| | | test pit dimensions (m) | 4.1 x 0.6 x 2.8 |
| context number | context type | description | depth bgl (m) |
| 137901 | layer | topsoil; mid grey brown silty clay loam with common subrounded chalk fragments and flecks; sparse subangular flint <0.08m; friable; distinct horizon. | 0-0.22 |
| 137902 | natural | off-white chalk very rare with subrounded flint nodules <0.3; Dm; compact; distinct horizon. | 0.22+ |

| Test pit 1380 | | site sub-division | Tennis courts |
|----------------|--------------|---|-----------------|
| | | test pit dimensions (m) | 3.4 x 0.6 x 2.8 |
| context number | context type | description | depth bgl (m) |
| 138001 | layer | topsoil; mid grey brown silty clay loam with moderate subrounded chalk fragments and flecks; rare subangular flint <0.08m; friable; distinct horizon. | 0-0.2 |
| 138002 | natural | off-white clayey chalk; dm to 1.4m then dc; rare subrounded flint nodules <0.3; blocky tabular chalk | 0.2+ |



| Test pit 1381 | | site sub-division | West of Washdown |
|----------------|--------------|--|------------------|
| | | test pit dimensions (m) | 3.6 x 0.6 x 2 |
| context number | context type | description | depth bgl (m) |
| 138101 | layer | topsoil; mid brown grey silty clay loam; rare subrounded chalk flecks; sparse subangular flint; friable; distinct horizon. | 0-0.4 |
| 138102 | natural | off white chalk; Dm; tabular; sparse subrounded flint <0.3; compact; distinct horizon; at a depth of 1.4m changes to Dc. | 0.4+ |

| Test pit 1382 | | site sub-division | Motocross track |
|----------------|--------------|---|-----------------|
| | | test pit dimensions (m) | 4.3 x 0.6 x 3 |
| context number | context type | description | depth bgl (m) |
| 138201 | layer | made-ground; light grey silty clay with sparse chalk flecks and fragments; sparse sub angular flint<0.1; loose; distinct horizon; bricks; concrete. | 0-0.18 |
| 138202 | layer | made-ground; mid brown grey silty clay with abundant chalk flecks and fragments; bricks; concrete; tarmac; barbed wire; CBM; friable; distinct horizon. | 0.18-1.3 |
| 138203 | natural | off-white chalk; block; Dm; more matrix than clasts; rare subrounded flint nodules< 0.3m; compact; distinct horizon. | 1.3+ |

| Test pit 1383 | | site sub-division | Motocross track |
|----------------|--------------|---|-----------------|
| | | test pit dimensions (m) | 3.8 x 0.6 x 3 |
| context number | context type | description | depth bgl (m) |
| 138301 | layer | topsoil; dark grey brown silty clay loam; with sparse subrounded chalk flecks and fragments; sparse subangular flint <0.1; friable; distinct horizon; bricks; concrete. | 0-0.28 |
| 138302 | natural | off-white chalk; Dm; tabular; rare subrounded flint <0.4; compact; distinct horizon. | 0.2+ |

| Test pit 1384 | | site sub-division | NE of Allen Brooke Barracks |
|-----------------|---|---|-----------------------------|
| | | test pit dimensions (m) | 3.5 x 0.6 x 2 |
| context number | context type | description | depth bgl (m) |
| 138401 | layer | topsoil; mid grey brown silty clay loam with sparse subrounded chalk fleck sand fragments; sparse subangular flints <0.1m; friable; distinct horizon. | 0-0.3 |
| 138402 | natural | off-white chalk; blocky; rare subrounded flint nodules <0.4; very compact; distinct horizon. | 0.3+ |
| comments | test pit stopped due to hardness of chalk. Dc at 0.6m | | |

| Test pit 1385 | | site sub-division | Horse paddocks- south of Watchkeeper |
|-----------------|---|---|--------------------------------------|
| | | test pit dimensions (m) | 4.1 x 0.6 x 2.5 |
| context number | context type | description | depth bgl (m) |
| 138501 | layer | topsoil; dark grey brown silty clay loam with common subrounded chalk flecks and fragments; sparse subangular flint <0.1m; loose; distinct horizon. | 0-0.4 |
| 138502 | natural | off-white chalk; Dm; rare subrounded flint nodules <0.4m; compact; distinct horizon; periglacial scarring. | 0.4+ |
| comments | possibly ditch/service trench at eastern of pit. bricks; concrete; metal pipe; asbestos in the upper fill; with asbestos present decided not to excavate further. | | |



| Test pit 1386 | | site sub-division | Field to South of Royal School of Artillery |
|-----------------------|---------------------|--|---|
| | | test pit dimensions (m) | 3.1 x 0.6 x 3 |
| context number | context type | description | depth bgl (m) |
| 138601 | layer | topsoil; dark grey brown silty clay loam with moderate subrounded chalk flecks and fragments; sparse subangular flints <0.1m; friable; distinct horizon. | 0-0.4 |
| 138602 | natural | off-white clayey chalk; Dm and Dc; blocky and tabletop boulders; rare subrounded flint nodules<0.4; compact; distinct horizon. | 0.4+ |

| Test pit 1387 | | site sub-division | Sports Field Outside of Site |
|-----------------------|---------------------|--|------------------------------|
| | | test pit dimensions (m) | 4 x 0.6 x 3 |
| context number | context type | description | depth bgl (m) |
| 138701 | layer | topsoil; mid brown grey silty clay loam; rare sub angular flint <01.m; sparse chalk flecks and fragments; loose; distinct horizon. | 0-0.26 |
| 138702 | natural | off-white chalk with rare subrounded flint nodules <0.3m compact; distinct horizon. | 0.26+ |



Part C

Perham Down Camp



6 PART C – PERHAM DOWN CAMP

6.1 The Site

- 6.1.1 An archaeological watching brief was maintained during geotechnical test-pitting at Perham Down, Wiltshire, centred on National Grid Reference (NGR) 425418 149200 ('the Site' in **Part C**) (**Figure 4**).
- 6.1.2 The Site is located within Perham Down Camp, a military facility on the Salisbury Plain Defence Training Estates situated to the east of Tidworth and 1km south-west of Ludgershall. The camp is currently home to the 22nd and 26th Engineer Regiments, featuring a variety of structures, and an area of established woodland to the south of the senior ranks accommodation and mess.
- 6.1.3 The Site is bounded by Somme Road (east) and the road linking Tidworth and the A342 Andover Road (south). Residential estates lie to the south-west and south-east with open land to the north-west. To the north-east are the remnants of a road system associated with the earlier tented camp.
- 6.1.4 The Site, which comprises an irregular parcel of land of approximately 37.1ha, is located on the top of a gentle chalk knoll (c. 120m to c. 130m aOD).
- 6.1.5 The underlying geology of the Site is mapped as Cretaceous Upper Chalk of the Newhaven Formation, changing to the Seaford Formation towards the north-east (British Geological Survey).

6.2 Archaeological background

Introduction

- 6.2.1 A detailed historical and archaeological background has been produced in a site-specific desk-based assessment, and summarised in the WSI (WA 2014c; 2014g). A summary is provided below.

Recent investigations

- 6.2.2 A number of evaluations, part of an archaeological assessment of the Salisbury Plain camps, found the southern part of the Site to be heavily truncated by building foundations. To the north, previously the tented camp, there was far less damage. Overall the results demonstrate varying degrees of truncation and modern made-ground associated with the levelling and repeated redevelopment of the Site.
- 6.2.3 The desk-based assessment found no overriding heritage constraints are likely to prohibit development. A potential adverse impact with regard to the setting of the Scheduled Monument (see below) was considered a possible result of the development proposals, though it was not considered to directly contribute towards a reduction in its significance.
- 6.2.4 It was determined that future development proposals may entail a risk of causing direct and indirect impacts to non-designated, yet historically significant structures located within the Site.
- 6.2.5 The study established that there is an archaeological interest within the site, defined as the potential for the presence of buried archaeological remains, in particular relating to prehistoric and Romano-British agricultural practices and 19th century and modern military activity.



Known archaeology

- 6.2.6 A large undated linear ditch and bank feature (SM No. 1009833), extending south-west to north-east across the Site and onto Lamb Down, has been interpreted as prehistoric. Parts of this feature were revealed found in recent investigations, some of which coincide with historical map evidence.
- 6.2.7 Romano-British evidence is limited to occasional find spots.
- 6.2.8 Evidence for Saxon and medieval occupation of the vicinity is slight. The remains of a single Saxon burial with a spearhead and shield boss was excavated within the western part of Perham Down camp in 1939.
- 6.2.9 By 1899 Perham Down was being used as a training area and tented camp by the army.
- 6.2.10 The outbreak of the First World War necessitated a rapid expansion of facilities; the tented camp at Perham Down was replaced by a large hatted encampment in 1915. Much of the encampment to the north-west was demolished in the interwar years.
- 6.2.11 The facilities at Perham Down were altered regularly to accommodate the changing requirements of the Army. By May 1940, the 5th and 8th Battalions based at Perham Down had departed for France as part of the British Expeditionary Force.
- 6.2.12 A comprehensive redevelopment took place between 1972 and 1974 including the large-scale demolition of the former camp and complete redesign of the Swinton Barracks. Recently, construction of a number of large utility buildings took place on previously undeveloped land to the north-west.
- 6.2.13 A handful of undated archaeological features were found within the former Fowler Barracks, an area relatively untouched by later activity.

6.3 Results (Perham Down)

Summary

- 6.3.1 Tabulated comprehensive descriptions and observations for the 26 test pits can be found in Section 6.4.
- 6.3.2 No features or deposits of archaeological interest were encountered. The results are summarised below.

Deposit sequences

- 6.3.3 The natural geology below the Site comprises solid chalk, with flint nodules occurring randomly and occasionally in discrete seams (Test pit **1448**). In most examples the upper extents of the chalk was much degraded, becoming denser and less discoloured with depth. Periglacial geological anomalies/deposits were noted in Test pits **1432** and **1444**. The top of the natural geology was encountered at varying depths, from 0.10m to 1.5m (average 0.54m) below ground level (bgl).
- 6.3.4 Natural geology was not reached in four test pits, one was excavated into a large bank (**1433**), one was abandoned due to extant woodland (**1425**), and the remaining two coincided with service runs (see below).
- 6.3.5 Possible 'subsoil' deposits were identified in seven test pits (**1431–32**, **1442**, and **1444–48**). These were of various colours and textures, generally grey or brown, with some



degraded chalk content. The deposit depths ranged between 0.1m and 0.3m, on average 0.2m. In all cases the deposit was found between the topsoil and natural geology.

- 6.3.6 A layer of topsoil was recorded in 19 test pits, ranging from 0.1m–0.4m, averaging 0.19m deep. Topsoil covering made-ground deposits was fairly consistently 0.1m deep. Generally a variation of brown/grey silty loam, some contained greater quantities of chalk, especially in the deeper deposits of Test pits **1429** and **1430**, where it probably incorporated upcast soils from construction of Somme Road. A sandier example probably represents some mixing-in of the road surface debris. In the wooded areas the topsoil was much darker, and comprised a greater proportion of humic material.
- 6.3.7 The topsoil had been stripped immediately prior to the excavation of Test pit **1439**. The uppermost layers in four test pits comprised gravelled road and brick-paved surfaces, together with associated bedding material.
- 6.3.8 Complete, undisturbed original soil sequences were identified in 12 test pits (**1424**, **1426**, **1429–32**, **1442**, and **1444–48**), mostly concentrated in the northern part of the camp, and one to the south (**Figure 4**). Only in Test pit **1426** were the deposits sealed below layers of made-ground.
- 6.3.9 Various made-ground layers were observed in ten test pits (**1426–27**, **1433**, **1435–38**, **1440–41**, and **1443**). Depths ranged widely between 0.2m and 2.9m, averaging 1.13m, and with little consistency across the Site. Much of the material comprised varying proportions of redeposited natural soils, demolition, and domestic debris. Test pits in the vicinity of the purported site of an incinerator (**1426**, possibly **1427**) revealed c. 0.9m deep dumps of Victorian and later refuse and other debris.

Modern utilities and contamination

- 6.3.10 Modern service were found in two test pits (**1434** and **1435**), north of Stibbon Road. Test pit **1428** revealed deposits contaminated by petrochemicals.

Overview

- 6.3.11 The Perham Down Camp watching brief found undisturbed, original soil horizons in nearly half of the test pits (46%), indicating that of the four camps, this was the least affected by landscaping and other disturbances associated with the development and use of the camp. Where there has been truncation, most is apparently less severe than in the other camps. The potential survival of buried archaeological remains is therefore considered to be high across a large proportion of the Site. Where more substantial truncation has occurred, e.g. ground reduction and service trenching, the potential survival of buried archaeological remains is deemed to be low.

6.4 Test pit summaries (Perham Down)

KEY: bgl – below ground level

| Test pit 1423 | | test pit dimensions (m) | 2.5 x 0.6 x 2.3 | |
|-------------------------|--------------|--|-----------------|---------------|
| context number | context type | description | | depth bgl (m) |
| 142301 | layer (s) | road surfaces; type one style gravel & stone; several layers of stones and chalk | | 0-0.45 |
| 142302 | layer | natural; compact chalk; occasional subangular nodules | | 0.45+ |
| comments | | on area of Hall Road, outside Barrack enclosure | | |



| Test pit 1424 | | test pit dimensions (m) | 2.3 x 0.6 x 2.0 |
|----------------|--------------|--|-----------------|
| context number | context type | description | depth bgl (m) |
| 142401 | layer | topsoil; very dark brown/black; humic silty loam; occasional carbon flecks | 0-0.10 |
| 142402 | layer | degraded chalk; soft; plastic; friable | 0.10-1.00 |
| 142403 | layer | natural; compact chalk; occasional flint nodules | 1.00-2.00 |

| Test pit 1425 | | test pit dimensions (m) | N/A |
|---------------|----------------------|-------------------------|-----|
| comments | Abandoned - woodland | | |

| Test pit 1426 | | test pit dimensions (m) | 2.0 x 0.6 x 2.1 |
|----------------|---|---|-----------------|
| context number | context type | description | depth bgl (m) |
| 142601 | layer | topsoil; black humic loam; soft; abundant subangular flint | 0-0.25 |
| 142602 | layer | Victorian dump layers/made-ground; grey very soft ashy; glass, ceramic, clay pipe; clinker, stoneware, lenses heavy carbon, iron object | 0.25-1.10 |
| 142603 | layer | ?buried soil; orange-brown silty clay; sparse subangular flint | 1.10-1.20 |
| 142604 | layer | natural; degraded chalk | 1.20-1.40 |
| 142605 | layer | natural; compact chalk with flint nodules | 1.4+ |
| comments | in Barracks wooded area; purported location of an incinerator | | |

| Test pit 1427 | | test pit dimensions (m) | 2.7 x 0.6 x 2.7 |
|----------------|--------------|--|-----------------|
| context number | context type | description | depth bgl (m) |
| 142701 | layer | road surface; type one | 0-0.10 |
| 142702 | layer | dump/made-ground (post-Victorian); burnt; CBM, kitchen ware, ink pot, glass, willow pattern | 0.10-0.50 |
| 142703 | layer | dump/made-ground (post-Victorian); many lenses chalk & mixed brown silt; glass, CBM, ceramic | 0.5-1.0 |
| 142704 | layer | natural; solid and compact chalk | 1.0+ |

| Test pit 1428 | | test pit dimensions (m) | 2.6 x 0.6 x 2.2 |
|----------------|--|--|-----------------|
| context number | context type | description | depth bgl (m) |
| 142801 | layer | road surface; mixed bands type one, peagrit | 0-0.30 |
| 142802 | layer | natural; degraded chalk; occasional subangular flint pebbles | 0.30-1.00 |
| 142803 | layer | natural; compact chalk; occasional nodules | 1.00+ |
| comments | abandoned - contaminated with petrochemicals | | |



| Test pit 1429 | | test pit dimensions (m) | 3.0 x 0.6 x 2.9 |
|----------------|--------------|--|-----------------|
| context number | context type | description | depth bgl (m) |
| 142901 | layer | top/subsoil; mixed mid brown silty loam; occasional subangular flint; ?upcast from road construction | 0-0.35 |
| 142902 | layer | natural; mid orange-brown silty-clay; common subangular flint; cryoturbation/periglacial activity | 0.35-0.50 |
| 142903 | layer | natural; degraded chalk; occasional flint | 0.50-1.00 |
| 142904 | layer | natural; compact chalk; common flint nodules | 1.00+ |

| Test pit 1430 | | test pit dimensions (m) | 2.5 x 0.6 x 2.3 |
|----------------|--------------|--|-----------------|
| context number | context type | description | depth bgl (m) |
| 143001 | layer | top/subsoil; very mixed pale brown silty chalk; common subangular flint; possible upcast from road cut | 0-0.40 |
| 143002 | layer | natural; degraded chalk; soft; mixed | 0.40-0.70 |
| 143003 | layer | natural; compact chalk | 0.70+ |

| Test pit 1431 | | test pit dimensions (m) | 3.0 x 0.6 x 3.0 |
|----------------|--------------|---|-----------------|
| context number | context type | description | depth bgl (m) |
| 143101 | layer | topsoil; mid brown sandy silt | 0-0.10 |
| 143102 | layer | subsoil; pale brown loose sandy clay; poorly sorted chalk & flint; gravel | 0.10-0.30 |
| 143103 | layer | solid chalk; occasional flint nodules | 0.30+ |

| Test pit 1432 | | test pit dimensions (m) | 3.0 x 0.6 x 3.0 |
|----------------|---------------|--|-----------------|
| context number | context type | description | depth bgl (m) |
| 143201 | layer | topsoil; mid brown-grey silty loam; occasional chalk & flint pebbles | 0-0.20 |
| 143202 | layer | subsoil; grey mixed loam; chalk & flint pebbles | 0.20-0.40 |
| 143203 | layer/anomaly | periglacial; orange-brown silty loam; abundant subangular flint & peagrit; probable tree-throw hole/periglacial anomaly north side | 0.40-0.50 |
| 143204 | layer | natural; degraded chalk; occasional flint | 0.50-0.70 |
| 143205 | layer | natural; compact chalk; flint nodules; flint bed at base | 0.70+ |

| Test pit 1433 | | test pit dimensions (m) | 3.0 x 0.6 x 3.0 |
|-----------------|------------------------------------|---|---------------------|
| context number | context type | description | height above gl (m) |
| 143301 | layer | topsoil; brown silty clay; common chalk peagrit | 3.0-2.6 |
| 143302 | layer | made-ground (bank); lenses redeposited degraded chalk & orange-brown clay | 2.6-0 |
| comments | 3m high bank at edge of lorry park | | |

| Test pit 1434 | | test pit dimensions (m) | N/A |
|-----------------|----------------------|-------------------------|-----|
| comments | Abandoned - services | | |



| Test pit 1435 | | test pit dimensions (m) | 2.0 x 0.6 x 0.98 |
|-----------------|--------------|--|------------------|
| context number | context type | description | depth bgl (m) |
| 143501 | layer | surface; brick block paving over sand & peagrit | 0-0.10 |
| 143502 | layer | bedding; type one mixed hardcore including large chalk lumps | 0.10-0.98 |
| comments | | water pipe encountered at 0.98m | |

| Test pit 1436 | | test pit dimensions (m) | 3.0 x 0.6 x 3.0 |
|----------------|--------------|---|-----------------|
| context number | context type | description | depth bgl (m) |
| 143601 | layer | topsoil; mid-brown sandy-silt; peagrit | 0-0.10 |
| 143602 | layer | made-ground; mid-light brown chalky loam; demolition debris | 0.10-0.30 |
| 143603 | layer | natural; degraded chalk | 0.30-2.00 |
| 143604 | layer | natural; compact chalk; occasional flint nodule | 2+ |

| Test pit 1437 | | test pit dimensions (m) | 2.0 x 1.1 x 3.0 |
|----------------|--------------|---|-----------------|
| context number | context type | description | depth bgl (m) |
| 143701 | layer | topsoil; mid grey-brown silty loam | 0-0.10 |
| 143702 | layer | made-ground; very mixed chalk & flint; reinforced concrete rubble & demolition debris | 0.10-3.0 |
| 143703 | layer | natural; east side of test pit only; compact chalk | 0.80+ |

| Test pit 1438 | | test pit dimensions (m) | 4.0 x 0.6 x 3.0 |
|----------------|--------------|---|-----------------|
| context number | context type | description | depth bgl (m) |
| 143801 | layer | topsoil; mid grey-brown silty loam | 0-0.10 |
| 143802 | layer | made-ground; very mixed lenses; chalk & flint; reinforced concrete rubble & demolition debris | 0.10-1.50 |
| 143803 | layer | natural; compact chalk | 1.50+ |

| Test pit 1439 | | test pit dimensions (m) | 4.0 x 0.6 x 3.0 |
|-----------------|--------------|--|-----------------|
| context number | context type | description | depth *bgl (m) |
| 143901 | layer | made-ground; mixed demolition debris & chalky silty loam | 0-0.70 |
| 143902 | layer | natural; degraded chalk | 0.70-2.00 |
| 143903 | layer | natural; compact chalk | 2.00+ |
| comments | | *already stripped of topsoil | |

| Test pit 1440 | | test pit dimensions (m) | 3.0 x 0.6 x 2.5 |
|----------------|--------------|--|-----------------|
| context number | context type | description | depth bgl(m) |
| 144001 | layer | topsoil; pale grey silty loam; occasional chalk flecks | 0-0.40 |
| 144002 | layer | made-ground; mixed soft chalk with pockets silty grey loam; beer can, rope | 0.40-0.60 |
| 144003 | layer | natural; degraded chalk | 0.60-1.0 |
| 144004 | layer | natural; compact chalk | 1.0+ |



| Test pit 1441 | | test pit dimensions (m) | 3.1 x 0.6 x 3.0 |
|----------------|--------------|--|-----------------|
| context number | context type | description | depth bgl (m) |
| 144101 | layer | topsoil; dark brown silty loam | 0-0.10 |
| 144102 | layer | made-ground; very mixed demolition debris, brick, rubble, chalk & clay | 0.10-1.10 |
| 144103 | layer | natural; degraded chalk, soft, crumbly | 1.10-2.10 |
| 144104 | layer | natural; compact chalk | 2.10+ |

| Test pit 1442 | | test pit dimensions (m) | 3.0 x 0.6 x 3.0 |
|----------------|--------------|--|-----------------|
| context number | context type | description | depth bgl (m) |
| 144201 | layer | topsoil; dark brown silty loam; occasional poorly sorted chalk & flint peagrit | 0-0.10 |
| 144202 | layer | subsoil; orange-brown silty loam; occasional poorly sorted chalk & flint peagrit | 0.10-0.20 |
| 144203 | layer | natural; degraded chalk, soft, crumbly | 0.20-1.00 |
| 144204 | layer | natural; compact chalk | 1.00+ |

| Test pit 1443 | | test pit dimensions (m) | 0.4 x 0.5 x 0.8 |
|-----------------|---|-------------------------------|-----------------|
| context number | context type | description | depth bgl (m) |
| 144301 | layer | topsoil; mid brown silty-clay | 0-0.10 |
| 144302 | layer | made-ground; building rubble | 0.10-0.30 |
| 144303 | layer | natural; degraded chalk | 0.30-0.80 |
| comments | hand dug up against guardhouse building | | |

| Test pit 1444 | | test pit dimensions (m) | 3.4 x 0.6 x 3.0 |
|----------------|---------------|---|-----------------|
| context number | context type | description | depth bgl (m) |
| 144401 | layer | topsoil; grey-brown silty-clay; chalk flecks | 0-0.10 |
| 144402 | layer/anomaly | subsoil; orange-brown silty-clay; common subangular flint; possible tree-throw hole/periglacial anomaly | 0.10-0.40 |
| 144403 | layer | natural; degraded soft chalk | 0.40-0.70 |
| 144404 | layer | natural; compact chalk; flint nodules; flint bed at 2.0m | 0.70+ |

| Test pit 1445 | | test pit dimensions (m) | 3.0 x 0.6 x 3.0 |
|----------------|--------------|--|-----------------|
| context number | context type | description | depth bgl (m) |
| 144501 | layer | topsoil; mid brown silty loam | 0-0.10 |
| 144502 | layer | subsoil; pale grey-brown loose silt/chalky clay; occasional subangular flint & chalk fragments | 0.10-0.40 |
| 144503 | layer | natural; compact chalk; occasional flint nodule & band | 0.40+ |



| Test pit 1446 | | test pit dimensions (m) | 2.7 x 0.6 x 2.97 |
|-----------------------|---------------------|---|----------------------|
| context number | context type | description | depth bgl (m) |
| 144601 | layer | topsoil; mixed mid brown silty-clay; common pebble-peagrit flint, chalk & demolition debris | 0-0.10 |
| 144602 | layer | degraded chalk; soft; friable; flint fragments | 0.10-0.30 |
| 144603 | layer | compact chalk; flint nodules | 0.30+ |

| Test pit 1447 | | test pit dimensions (m) | 3.0 x 0.6 x 2.4 |
|-----------------------|---------------------|---|----------------------|
| context number | context type | description | depth bgl (m) |
| 144701 | layer | topsoil; very mixed humic soil with abundant roots | 0-0.40 |
| 144702 | layer | subsoil; orange-brown silty-clay; common subangular flint | 0.40-0.60 |
| 144703 | layer | degraded chalk; soft; friable | 0.60-1.00 |
| 144704 | layer | compact solid chalk; occasional flint nodules | 1.00+ |
| comments | in woodland | | |

| Test pit 1448 | | test pit dimensions (m) | 3.0 x 0.6 x 2.3 |
|-----------------------|---------------------|--|----------------------|
| context number | context type | description | depth bgl (m) |
| 144801 | layer | topsoil; mid brown silty-clay | 0-0.10 |
| 144802 | layer | subsoil; orange-brown soft silty loam; cryoturbation | 0.10-0.20 |
| 144803 | layer | natural; compact chalk; occasional flint nodules | 0.20+ |
| 144804 | layer | dense bed of flint nodules | 0.20-2.30 |



Part D

Tidworth Camp



7 PART D – TIDWORTH CAMP

7.1 The Site

- 7.1.1 An archaeological watching brief was maintained during geotechnical test-pitting at Tidworth Camp, Wiltshire, centred on National Grid Reference (NGR) 422482 148290 ('the Site' in **Part D**) (**Figure 5**).
- 7.1.2 The c. 166ha Site is located at the western edge of the garrison town of Tidworth, Wiltshire, some 12km to the north-east of Amesbury. It consists of an irregular parcel of land situated within Tidworth Camp, one of several military establishments which form part of the Salisbury Plain Defence Training Estates.
- 7.1.3 Tidworth camp is considerably developed with a number of Barracks and associated facilities delineated by a network of roads which traverse the Site from north-east to south-west. Bulford Road partially defines the southern boundary of the Site.
- 7.1.4 The Site is bounded by army housing to the north and military structures and sports grounds to the east. Tidworth Garrison Golf Course is immediately to the south, while the largely open landscapes to the north and west are part of the military training grounds.
- 7.1.5 Several plantations define the south-western Site perimeter. Access to the camp is obtained from the east via Pennings Road, which forms the main north-south route through Tidworth.
- 7.1.6 The Site occupies a south-east facing slope in the River Bourne valley, rising from approximately 108m aOD (north-east) to c. 130m aOD (west).
- 7.1.7 The underlying geology of the Site is mapped as Cretaceous Chalk of the Newhaven Chalk Formation, overlain in places by Quaternary Head Deposits composed of clay, silt sand and gravel (British Geological Survey online viewer).

7.2 Archaeological background

Introduction

- 7.2.1 A detailed historical and archaeological background has been produced in a site-specific desk-based assessment, and summarised in the WSI (WA 2014d; 2014f). A summary is provided below.

Recent investigations

- 7.2.2 Recent intrusive investigations revealed several areas of truncation and thick made-ground deposits resulting from modern landscaping, as well as limited archaeological remains from the prehistoric to post-medieval periods. Buried soil horizons thought to be of 19th century origin were revealed in several trenches.
- 7.2.3 The desk-based assessment found no overriding heritage constraints likely to prohibit development. In regard to Listed Buildings, the current altered modern setting meant that no significant impacts upon these assets are likely to arise from future development.
- 7.2.4 The study highlighted the potential for indirect impacts upon a Bronze Age barrow cemetery located immediately to the north of the site (Scheduled Monument, see below). It warned that further development may be detrimental to its significance, and that associated groundworks may have a direct impact upon buried archaeological remains linked to the monument which may extend into the site.



7.2.5 It was also determined that future development proposals may entail a risk of causing direct and indirect impacts to non-designated, yet historically significant structures located within the Site.

7.2.6 The assessment established that there is an archaeological interest within the Site, defined as the potential for the presence of buried archaeological remains, in particular related to Bronze Age funerary and settlement practices.

Known Archaeology

7.2.7 A total of 13 Scheduled Monuments are situated within the immediate environs, with several of these lying in close proximity to the Site. All are of prehistoric date and are considered to be of national significance. Several barrows are recorded including 'Seven Barrows' (SM No. 1015481). Some of the boundary features are potentially associated with the 'Devil's Ditch' earthwork (SM No. 1015434).

7.2.8 The landscape remained largely agricultural in nature until 1897, when a large area of land on Salisbury Plain was purchased for the purpose of military manoeuvres.

7.2.9 The construction of Tidworth Camp began in 1902 with the erection of eight barracks; improvements took place in 1907 with the construction of a military hospital, church, Garrison Theatre and the power station. The outbreak of the First World War resulted in an influx of new recruits as Tidworth Camp became established at the centre of a large scale training and military operation.

7.2.10 Several early 20th century Grade II Listed Buildings are located in the south-east part of the Site.

7.2.11 The increased mechanisation of the cavalry in the inter-war period led to further developments within the camp. By the end of the 20th century, the changing nature of the army and its requirements necessitated a redesign of the barracks at Tidworth. As a result, a large number of buildings have been demolished or refurbished.

7.3 Results (Tidworth)

Summary

7.3.1 Tabulated comprehensive descriptions and observations for the 36 test pits can be found in Section 7.4.

7.3.2 No features or deposits of archaeological interest were encountered. The results are summarised below.

Deposit sequences

7.3.3 The natural geology comprises solid chalk, with random flint nodules. In most examples the upper portion of the chalk was much degraded, becoming denser and less discoloured with depth. The top of the natural geology was encountered at between 0.10m and 3.1m (average 1.07m) bgl.

7.3.4 Natural geology was not reached in 11 test pits; some were too shallow, being hand-dug or where obstructions were encountered, whilst test pits at the western end of the Site revealed substantial depths of made-ground (**1544–45, 1547, 1558–59**).

7.3.5 Probable 'subsoil' was identified in ten test pits across the Site (**1534, 1549–50, 1552–54, 1563–65, 1568**), sometimes with associated topsoil, other times directly below made-



ground (six cases). Depths ranged between 0.2m and 0.8m, averaging 0.44m. Elsewhere it seems that subsoil had been removed during the landscaping process.

- 7.3.6 A layer of topsoil was recorded in most test pits, ranging from 0.05m–0.3m, averaging 0.13m deep. In the majority of cases the mid brown loam was consistent with it having derived or formed in the immediate vicinity. In one case, on the football ground, the deposit was darker and more humic, whilst elsewhere more powdery, silty deposits described indicating that topsoil may have been imported. Alternative uppermost layers include brick and gravel surfaces.
- 7.3.7 Various made-ground layers were observed in 27 test pits (75%). The deposits were predominantly demolition and building debris, with some examples of mixed natural deposits. Made-ground layers and sequences (c. 0.10m–2.8m; average 1.25m) were generally encountered between the topsoil or surface/bedding material and the natural subsoil or geology. Test pit **1542**, near the football ground, was cut into a large bank, which comprised compacted redeposited chalk.

Modern utilities and contamination

- 7.3.8 Service runs were uncovered in four test pits across the Site (**1533**, **1535**, **1538** and **1562**). Test pit **1545**, on the west side of the Site, revealed deposits contaminated by petrochemicals.

Overview

- 7.3.9 At Tidworth Camp apparently undisturbed soil horizons were observed in several, localised areas of the Site. The made-ground deposits were particularly extensive and substantial, their depth precluding the observation of the underlying deposits in a number of test pits in the western portion. The potential for the survival of archaeological remains is considered to be **high** across parts of the Site where deposits may well remain relatively undisturbed under made-ground deposits. Truncation associated with landscaping and utility installations varied from just topsoil stripping, to deeper cuts into the subsoil and natural geology. In these locations the potential for the survival of buried archaeological remains is considered to be **moderate to low**.

7.4 Test pit summaries (Tidworth)

KEY: bgl – below ground level

| Test pit 1533 | | test pit dimensions (m) | 3.0 x 0.6 x 3.0 | |
|-------------------------|--------------|--|-----------------|---------------|
| context number | context type | description | | depth bgl (m) |
| 153301 | layer | made-ground; orange-red clay loam; imported | | 0-0.15 |
| 153302 | layer | made-ground; very mixed chalky demolition debris including tarmac, metal & CBM | | 0.15-0.8 |
| 153303 | layer | made-ground; mid orange-brown thin band; silty clay | | 0.8-0.85 |
| 153304 | layer | concrete – service pipe trench | | 1.3-1.75 |
| 153305 | layer | made-ground; mixed chalk & silty clay | | 1.75-1.90 |
| 153306 | layer | ?redeposited; orange-brown silty clay; occasional; flint | | 1.90-2.30 |
| 153307 | layer | pale brown chalky loam (?cryoturbation) | | 2.30-2.90 |
| comments | | service pipe encountered | | |



| Test pit 1534 | | test pit dimensions (m) | 3.0 x 0.6 x 3.0 |
|----------------|--------------|---|-----------------|
| context number | context type | description | depth bgl (m) |
| 153401 | layer | topsoil; mid brown loam | 0-0.10 |
| 153402 | layer | made-ground; chalk | 0.10-1.30 |
| 153403 | layer | subsoil; orange-brown silty loam; common flint subangular pebbles | 1.30-1.50 |
| 153404 | layer | cryoturbation; very pale silty chalk; some flint | 1.50-1.70 |
| 153405 | layer | natural; degraded chalk | 1.70+ |

| Test pit 1535 | | test pit dimensions (m) | 3.0 x 0.6 x 0.3 |
|-----------------|-------------------|--|-----------------|
| context number | context type | description | depth bgl (m) |
| 153501 | layer | topsoil; mid brown silty clay | 0-0.10 |
| 153502 | layer | made-ground; mixed mid brown silty loam, demolition debris; subrounded flint; chalk flecks | 0.10-0.30 |
| comments | abandoned - cable | | |

| Test pit 1536 | | test pit dimensions (m) | 3.0 x 0.6 x 2.8 |
|----------------|--------------|--|-----------------|
| context number | context type | description | depth bgl (m) |
| 153601 | layer | topsoil; mid brown sandy loam; imported | 0-0.20 |
| 153602 | layer | made-ground; demolition debris | 0.20-0.70 |
| 153603 | layer | made-ground; type one graded stone; dark red | 0.70-1.40 |
| 153604 | layer | concrete west side; natural chalk east side | 1.40+ |

| Test pit 1537 | | test pit dimensions (m) | 2.5 x 0.6 x 3.0 |
|-----------------|---|--|-----------------|
| context number | context type | description | depth bgl (m) |
| 153701 | layer | topsoil & made-ground; mixed mid grey-brown loam with chalk lenses | 0-0.50 |
| 153702 | layer | modern animal burial (?dog) below 153701, in cut 153703 | 0.50-0.75 |
| 153703 | cut | 'grave' for modern animal burial; subrounded; redeposited chalk fill | 0.50-0.75 |
| 153704 | layer | natural; compact chalk; occasional flint nodules | 0.50+ |
| comments | modern animal (?dog) burial; test pit adjusted to avoid further disturbance | | |

| Test pit 1538 | | test pit dimensions (m) | 2.7 x 0.6 x 1.0 |
|-----------------|----------------------------|--|-----------------|
| context number | context type | description | depth bgl (m) |
| 153801 | layer | topsoil; mid brown silty loam | 0-0.20 |
| 153802 | layer | made-ground; redeposited chalk | 0.20-0.60 |
| 153803 | layer | made-ground; brown silty loam; demolition debris | 0.60-1.00 |
| comments | abandoned - cables at 1.0m | | |



| Test pit 1539 | | test pit dimensions (m) | 2.6 x 0.6 x 3.0 |
|----------------|--------------|---|-----------------|
| context number | context type | description | depth bgl (m) |
| 153901 | layer | topsoil; very soft, powdery mid brown sandy loam; imported | 0-0.10 |
| 153902 | layer | made-ground; multiple lenses chalky & sandy loam; rare subangular flint | 0.10-1.00 |
| 153903 | layer | natural; degraded chalk | 1.00-1.50 |
| 153904 | layer | natural; compact chalk | 1.5+ |

| Test pit 1540 | | test pit dimensions (m) | 2.0 x 0.6 x 3.0 |
|----------------|--------------|--|-----------------|
| context number | context type | description | depth bgl (m) |
| 154001 | layer | topsoil; mid-dark brown sandy loam | 0-0.10 |
| 154002 | layer | made-ground; demolition debris | 0.10-0.40 |
| 154003 | layer | natural; compact chalk; soft & plastic; occasional flint nodules | 0.40+ |

| Test pit 1541 | | test pit dimensions (m) | 2.0 x 0.6 x 2.6 |
|----------------|--------------|---|-----------------|
| context number | context type | description | depth bgl (m) |
| 154101 | layer | topsoil; mid brown sandy loam | 0-0.10 |
| 154102 | layer | made-ground; very mixed, layers & lenses chalk, orange-brown silty sand, much demolition debris & bottles | 0.10-2.00 |
| 154103 | layer | natural – compact chalk; occasional flint nodule | 2.00+ |

| Test pit 1542 | | test pit dimensions (m) | 2.5 x 0.6 x 3.0 |
|-----------------|----------------------------|------------------------------|---------------------|
| context number | context type | description | height above gl (m) |
| 154201 | layer | surface; pebbles/flints | 3.00-2.90 |
| 154202 | layer | bank; firm compact chalk | 2.90-1.50 |
| 154203 | layer | natural; soft, plastic chalk | 1.50-0 |
| comments | bank at edge of lorry park | | |

| Test pit 1543 | | test pit dimensions (m) | 2.7 x 0.6 x 1.0 |
|----------------|--------------|--|-----------------|
| context number | context type | description | depth bgl (m) |
| 154301 | layer | topsoil; mid brown silty loam | 0-0.10 |
| 154302 | layer | natural; degraded soft, plastic chalk | 0.10-1.00 |
| 154303 | layer | natural; compact chalk; subangular to subrounded flint nodules | 1.00+ |

| Test pit 1544 | | test pit dimensions (m) | 3.0 x 0.6 x 2.4 |
|-----------------|---------------------|--------------------------------|-----------------|
| context number | context type | description | depth bgl (m) |
| 154401 | layer | topsoil; mid brown chalky loam | 0-0.10 |
| 154402 | layer | made-ground; demolition debris | 0.10-2.40 |
| comments | natural not reached | | |



| Test pit 1545 | | test pit dimensions (m) | 3.0 x 0.6 x 2.3 |
|-----------------------|-------------------------------|--|----------------------|
| context number | context type | description | depth bgl (m) |
| 154501 | layer | topsoil; mid grey-brown silty clay | 0-0.20 |
| 154502 | layer | made-ground; very mixed flint building rubble; possible wall | 0.20-1.00 |
| 154503 | layer | made-ground; redeposited chalk & occasional building debris | 1.00+ |
| comments | contaminated - petrochemicals | | |

| Test pit 1546 | | test pit dimensions (m) | 3.0 x 0.6 x 3.0 |
|-----------------------|---------------------|---|----------------------|
| context number | context type | description | depth bgl (m) |
| 154601 | layer | topsoil; mid brown silty loam | 0-0.15 |
| 154602 | layer | made-ground; degraded chalk & building debris | 0.15-0.90 |
| 154603 | layer | natural; compact chalk; occasional flint nodule | 0.90+ |

| Test pit 1547 | | test pit dimensions (m) | 3.0 x 0.6 x 2.7 |
|-----------------------|---------------------|---|----------------------|
| context number | context type | description | depth bgl (m) |
| 154701 | layer | topsoil; very humic brown loam; imported; football pitch turf | 0-0.20 |
| 154702 | layer | made-ground; chalk & building debris | 0.20-2.30 |
| 154703 | layer | made-ground; redeposited chalk | 2.30+ |
| comments | natural not reached | | |

| Test pit 1548 | | test pit dimensions (m) | 2.9 x 0.6 x 3.3 |
|-----------------------|---------------------|--|----------------------|
| context number | context type | description | depth bgl (m) |
| 154801 | layer | topsoil; mid-brown silty loam | 0-0.10 |
| 154802 | layer | made-ground; reddish-brown silty clay | 0.10-1.30 |
| 154803 | layer | natural; degraded chalk | 1.30-2.60 |
| 154804 | layer | natural; soft, plastic chalk; occasional flint | 2.60+ |

| Test pit 1549 | | test pit dimensions (m) | 2.7 x 0.6 x 2.8 |
|-----------------------|---------------------|---|----------------------|
| context number | context type | description | depth bgl (m) |
| 154901 | layer | topsoil; mid orange-brown silty loam | 0-0.10 |
| 154902 | layer | made-ground; orange-brown loam; occasional chalk flecks | 0.10-0.30 |
| 154903 | layer | made-ground; degraded chalk; occasional flint module; mixed | 0.30-1.00 |
| 154904 | layer | 'buried' subsoil; orange-brown silty loam | 1.00-1.80 |
| 154905 | layer | mixed grey-white; chalky clay silt | 1.80-2.50 |
| 154906 | layer | mixed chalk and silty loam; compact | 2.50-2.80 |
| 154907 | layer | natural; compact chalk | 2.80+ |



| Test pit 1550 | | test pit dimensions (m) | 3.0 x 0.6 x 3.0 |
|-----------------------|---------------------|---|----------------------|
| context number | context type | description | depth bgl (m) |
| 155001 | layer | topsoil; mid-dark brown loam; occasional peagrit | 0-0.10 |
| 155002 | layer | subsoil; orange-brown silty loam; occasional CBM flecks & peagrit | 0.10-0.30 |
| 155003 | layer | natural; compact chalk & flint nodules | 0.30+ |

| Test pit 1551 | | test pit dimensions (m) | 3.0 x 0.6 x 3.0 |
|-----------------------|---------------------|--|----------------------|
| context number | context type | description | depth bgl (m) |
| 155101 | layer | topsoil; mid brown silty loam | 0-0.20 |
| 155102 | layer | made-ground; mixed light-mid brown silty sandy loam; occasional chalk flecks | 0.20-0.40 |
| 155103 | layer | made-ground; light brown; degraded chalk & silty clay | 0.40-1.30 |
| 155104 | layer | natural; compact, solid chalk; common flint nodules | 1.30+ |

| Test pit 1552 | | test pit dimensions (m) | 3.0 x 0.6 x 3.0 |
|-----------------------|---------------------|--|----------------------|
| context number | context type | description | depth bgl (m) |
| 155201 | layer | topsoil; mid brown loam | 0-0.20 |
| 155202 | layer | made-ground; loose chalk | 0.20-0.50 |
| 155203 | layer | made-ground; mid orange-brown loam; common subangular flint | 0.50-0.90 |
| 155204 | layer | subsoil; very light brown chalk & orange-brown silty loam; interface | 0.90-1.40 |
| 155205 | layer | natural; compact chalk; occasional subrounded flint nodules | 1.40+ |

| Test pit 1553 | | test pit dimensions (m) | 3.0 x 0.6 x 3.0 |
|-----------------------|---------------------|--|----------------------|
| context number | context type | description | depth bgl (m) |
| 155301 | layer | topsoil; mid brown loam | 0-0.15 |
| 155302 | layer | levelling; dark brown loam; modern debris; sand | 0.15-0.25 |
| 155303 | layer | subsoil; orange-brown loam; subangular flint pebbles; rare chalk flecks | 0.25+ |
| 155304 | layer | natural; pale brown chalky clay; occasional subrounded flint; possible periglacial | 0.25-1.40 |
| 155305 | layer | natural; compact chalk; flint nodules; mottled with off-white degraded chalk | 1.40 |

| Test pit 1554 | | test pit dimensions (m) | 3.0 x 0.6 x 2.8 |
|-----------------------|---------------------|---|----------------------|
| context number | context type | description | depth bgl (m) |
| 155401 | layer | topsoil; mid brown loam | 0-0.10 |
| 155402 | layer | made ground; redeposited chalk | 0.10-1.00 |
| 155403 | layer | made ground; dark orange-brown loam; moderate flint | 1.00-1.60 |
| 155404 | layer | made ground; gravel, mixed pebble-peagrit; poorly sorted | 1.60-2.00 |
| 155405 | layer | subsoil; very pale chalk & silty loam; mixed; periglacial | 2.00-2.80 |
| 155406 | layer | natural; compact chalk; flint | 2.80+ |



| Test pit 1555 | | test pit dimensions (m) | 0.9 x 0.9 x 0.9 |
|-----------------|-------------------------------|--|-----------------|
| context number | context type | description | depth bgl (m) |
| 155501 | layer | surface; brick paving | 0-0.20 |
| 155502 | layer | made-ground; type one | 0.20-0.50 |
| 155503 | layer | made-ground; concrete platform | 0.30-0.90 |
| 155504 | layer | made-ground; mixed chalk, silt & flint | 0.50+ |
| comments | hand dug; natural not reached | | |

| Test pit 1556 | | test pit dimensions (m) | 0.5 x 0.5 x 0.7 |
|-----------------|-------------------------------|--|-----------------|
| context number | context type | description | depth bgl (m) |
| 155601 | layer | surface; gravel at rear of building | 0-0.10 |
| 155602 | layer | made-ground; mixed chalk & grey silty clay | 0.10-0.70 |
| comments | hand dug; natural not reached | | |

| Test pit 1557 | | test pit dimensions (m) | 0.6 x 0.6 x 0.9 |
|-----------------|--------------|---|-----------------|
| context number | context type | description | depth bgl (m) |
| 155701 | layer | topsoil; light brown loam; chalk flecks | 0-0.10 |
| 155702 | layer | natural; compact chalk | 0.10-0.90 |
| comments | hand dug | | |

| Test pit 1558 | | test pit dimensions (m) | 1.0 x 0.96 x 0.92 |
|-----------------|---|--|-------------------|
| context number | context type | description | depth bgl (m) |
| 155801 | layer | topsoil; turfed grey-brown loam | 0-0.05 |
| 155802 | layer | made-ground; compact greyish-brown chalky silty loam | 0.05-0.13 |
| 155803 | layer | made-ground; compact light reddish-grey chalky sand; modern debris | 0.13-0.35 |
| 155804 | layer | made-ground; compact chalk & building debris | 0.35-0.56 |
| 155805 | layer | made-ground; mid greyish brown matrix; hardcore | 0.56-0.92 |
| comments | natural not reached; footings starts at 0.92m | | |

| Test pit 1559 | | test pit dimensions (m) | 0.7 x 1.0 x 1.2 |
|-----------------|-------------------------------|--|-----------------|
| context number | context type | description | depth bgl (m) |
| 155901 | layer | topsoil; mid brown loam; imported; building concrete foundation slab | 0-0.10 |
| 155902 | layer | made-ground; gravels; building debris; chalk & silty loam; foundation pad | 0.10-0.30 |
| 155903 | layer | concrete foundation pad | 0.30+ |
| 155904 | layer | made-ground; orange-brown clay loam; mixed common poorly sorted subangular flint | 0.50-1.20 |
| comments | hand dug; natural not reached | | |



| Test pit 1560 | | test pit dimensions (m) | 0.8 x 0.8 x 1.1 |
|-----------------------|---|--|----------------------|
| context number | context type | description | depth bgl (m) |
| 156001 | layer | surface - tarmac | 0-0.10 |
| 156002 | layer | made-ground/levelling; dark brown | 0.10-0.18 |
| 156003 | layer | fill; compacted chalk fill around wall footing | 0.18-1.10 |
| comments | hand dug; brick wall – possible cellar; natural not reached | | |

| Test pit 1561 | | test pit dimensions (m) | 0.6 x 0.6 x 0.9 |
|-----------------------|---------------------|--|----------------------|
| context number | context type | description | depth bgl (m) |
| 156101 | layer | topsoil; mid brown silty loam | 0-0.10 |
| 156102 | layer | concrete slab | 0.10-0.40 |
| 156103 | layer | natural; compact chalk; subrounded flint nodules | 0.40-0.90 |
| comments | hand dug | | |

| Test pit 1562 | | test pit dimensions (m) | 1.1 x 0.8 x 0.4 |
|-----------------------|--------------------------------------|---|----------------------|
| context number | context type | description | depth bgl (m) |
| 156201 | layer | surface; tarmac (two layers) | 0-0.20 |
| 156202 | layer | levelling; type one gravels; pipe trench backfill | 0.20-0.40 |
| 156203 | layer | backfill; mid-brown silty clay; occasional subangular flint | 0.40+ |
| comments | hand dug; service trench encountered | | |

| Test pit 1563 | | test pit dimensions (m) | 1.5 x 0.6 x 0.5 |
|-----------------------|---------------------|--|----------------------|
| context number | context type | description | depth bgl (m) |
| 156301 | layer | topsoil; mid brown chalky silt | 0-0.10 |
| 156302 | layer | made-ground; brownish-white redeposited chalk & loam | 0.10-0.15 |
| 156303 | layer | subsoil; pale brown silty loam; occasional peagrit chalk & flint | 0.15-0.50 |
| comments | natural not reached | | |

| Test pit 1564 | | test pit dimensions (m) | 3.0 x 0.6 x 3.0 |
|-----------------------|---------------------|--|----------------------|
| context number | context type | description | depth bgl (m) |
| 156401 | layer | topsoil; mid grey-brown silty loam | 0-0.10 |
| 156402 | layer | subsoil; orange-brown sandy loam; common subangular flint pebbles, well sorted | 0.10-0.30 |
| 156403 | layer | natural; soft degraded chalk; periglacial | 0.30-1.00 |
| 156404 | layer | natural; fairly compact chalk; common flint nodules | 1.00+ |



| Test pit 1565 | | test pit dimensions (m) | 2.8 x 0.6 x 3.0 |
|-----------------------|---------------------|--|----------------------|
| context number | context type | description | depth bgl (m) |
| 156501 | layer | topsoil; dark brown silty loam | 0-0.15 |
| 156502 | layer | subsoil; soft orange-brown loam; common subangular flint pebbles, poorly sorted | 0.15-0.90 |
| 156503 | layer | natural; grey-white degraded chalk; occasional-frequent flint nodules; some sand; periglacial? | 0.90-1.30 |
| 156504 | layer | natural; as 156503 with more chalk; large boulder | 1.30-2.20 |
| 156505 | layer | natural; solid chalk | 2.20+ |
| comments | ?Sarson (156504) | | |

| Test pit 1566 | | test pit dimensions (m) | 2.8 x 0.6 x 3.0 |
|-----------------------|---------------------|---|----------------------|
| context number | context type | description | depth bgl (m) |
| 156601 | layer | topsoil; mid brown chalky loam; occasional subangular flint | 0-0.10 |
| 156602 | layer | made-ground; demolition material | 0.10-2.30 |
| 156603 | layer | natural; compact chalk; occasional subrounded flint nodules | 2.30+ |

| Test pit 1567 | | test pit dimensions (m) | 3.0 x 0.6 x 3.1 |
|-----------------------|---------------------|--|----------------------|
| context number | context type | description | depth bgl (m) |
| 156701 | layer | topsoil; mid brown soft loam; imported | 0-0.30 |
| 156702 | layer | made-ground; demolition debris | 0.30-0.55 |
| 156703 | layer | made-ground; degraded chalk; occasional building debris; mixed peagrit, sand & chalk | 0.55-3.10 |
| 156704 | layer | natural; compact chalk | 3.10+ |

| Test pit 1568 | | test pit dimensions (m) | 3.0 x 0.6 x 2.0 |
|-----------------------|---------------------|---|----------------------|
| context number | context type | description | depth bgl (m) |
| 156801 | layer | topsoil; mid orange-dark brown silty loam | 0-0.30 |
| 156802 | layer | made-ground; demolition debris & grey silty chalk | 0.30-1.00 |
| 156803 | layer | subsoil; orange-brown sandy loam | 1.00-1.10 |
| 156804 | layer | natural; degraded chalk; soft, plastic | 1.10-2.00 |
| 156805 | layer | natural; compact chalk; occasional flint nodule | 2.00+ |



8 ARTEFACTUAL AND ENVIRONMENTAL EVIDENCE

- 8.1.1 No archaeological artefacts were found, and none of the exposed deposits warranted sampling for environmental analysis.

9 CONCLUSIONS AND FURTHER POTENTIAL

- 9.1.1 No archaeological features, deposits or artefacts were identified during the watching briefs.

- 9.1.2 In general the results concur with conclusions drawn from previous archaeological and documentary investigations. Large scale landscaping, both building-up and reducing the ground levels, structural development and redevelopment, are in evidence at all four Sites. Undisturbed natural soil horizons, and therefore potentially archaeological remains, exist intermittently across the Sites, sealed below substantial deposits of made-ground and in areas that have remained ostensibly undeveloped since the camps were established.

- 9.1.3 The Bulford and Larkhill Camps were found to have comparable levels of landscaping, as well as limited examples of preserved original soil horizons. At Tidworth the landscaping appears more weighted towards building-up the ground levels, potentially preserving archaeological deposits underneath. At Perham Down it appears that landscaping and development has been relatively less extensive and less intrusive – though these comparisons are limited to the areas investigated.

- 9.1.4 Localised contamination by asbestos was noted in the Bulford and Larkhill Camps, whilst petrochemical contamination was evident in a few test pits on the Perham Down and Tidworth Camps.

- 9.1.5 Utility runs and/or trenches were identified in a small number of test pits on all four camps.

- 9.1.6 Across the Sites there remains a **moderate** to **high** potential for the survival of the archaeological resource in undisturbed areas, and where original soil horizons exist below made-ground deposits. Where there is substantial truncation, whether due to landscaping, foundations or service trenches, the potential for the survival of archaeological features and deposits in that area may be considered **low**.

- 9.1.7 Though restricted to evidence from ‘keyholes’ into the underlying deposits, the results of the watching briefs serve to inform future planning and archaeological mitigation strategies.

10 STORAGE AND CURATION

10.1 Museum

- 10.1.1 It is recommended that the project archive resulting from the excavation be deposited with Salisbury Museum, who has agreed in principle to accept the archive on completion of the project.

10.2 Preparation of Archive

- 10.2.1 The complete site archive, which will include paper records, photographic records, graphics, artefacts, ecofacts and digital data, will be prepared following the standard conditions for the acceptance of excavated archaeological material by Salisbury Museum,



and in general following nationally recommended guidelines (SMA 1995; IfA 2009; Brown 2011; ADS 2013).

- 10.2.2 All archive elements will be marked with the site code **105290**, and a full index will be prepared. The physical archive comprises four files of paper records and A3/A4 graphics, one for each Site.

10.3 Storage

- 10.3.1 All project archive material will be stored at the Wessex Archaeology premises in Salisbury until it is transferred to the museum.

10.4 Discard policy

- 10.4.1 Wessex Archaeology follows the guidelines set out in *Selection, Retention and Dispersal* (SMA 1993), which allows for the discard of selected artefact and ecofact categories which are not considered to warrant any future analysis. Any discard of artefacts will be fully documented in the project archive.

10.5 Copyright

- 10.5.1 The full copyright of the written/illustrative archive relating to the Site will be retained by WA Ltd under the *Copyright, Designs and Patents Act 1988* with all rights reserved. The Heritage Centre, however, will be granted exclusive licence for the use of the archive for educational purposes, including academic research, providing that such use shall be non-profit making, and conforms to the *Copyright and Related Rights regulations 2003*.

10.6 Security Copy

- 10.6.1 In line with current best practice (e.g. Brown 2011) on completion of the project a security copy of the written records will be prepared, in the form of a digital PDF/A file. PDF/A is an ISO-standardised version of the Portable Document Format (PDF) designed for the digital preservation of electronic documents through omission of features ill-suited to long-term archiving.

10.7 OASIS

- 10.7.1 An OASIS online record (<http://ads.ahds.ac.uk/projects/oasis/>) has been initiated for the work, with key fields completed on Details, Location and Creators Forms (**wessexar1-197247** to **wessexar1-197250**). All appropriate parts of the OASIS online forms will be completed for submission to the Wiltshire and Swindon Historic Environment Record. This will include an uploaded .pdf version of the entire report (a paper copy will also be included with the archive). Copies of the OASIS forms are found in **Appendix 1**.

11 REFERENCES

ADS 2013. *Caring for Digital Data in Archaeology: a guide to good practice*, Archaeology Data Service & Digital Antiquity Guides to Good Practice

Brown, D.H., 2011. *Archaeological archives; a guide to best practice in creation, compilation, transfer and curation*, Archaeological Archives Forum (revised edition)

British Geological Survey <http://mapapps.bgs.ac.uk/geologyofbritain/home.html>



- English Heritage 2006. *Management of Research Projects in the Historic Environment: The MoRPHE Project Managers' Guide*, Swindon, Centre for Archaeology Guidelines
- Institute for Archaeologists (IfA) 2013. *Standard and Guidance for an archaeological watching brief*, Institute for Archaeologists
- Institute for Archaeologists (IfA) 2013. *Standard and Guidance for the creation, compilation, transfer and deposition of archaeological archives*
- SMA 1993. *Selection, Retention and Dispersal of Archaeological Collections*, Society of Museum Archaeologists
- SMA 1995. *Towards an Accessible Archaeological Archive*, Society of Museum Archaeologists
- Wessex Archaeology 2014a. Army Basing Programme (ABP), Aldershot, Hampshire: Archaeological Watching Brief Report. Unpublished client report ref. 105290.12
- Wessex Archaeology 2014b. *Army Basing Programme (ABP), Larkhill, Wiltshire: Written Scheme of Investigation for an Archaeological Watching Brief*. Unpublished client report, ref. 105290.01
- Wessex Archaeology 2014c. *Army Basing Programme (ABP), Perham Down, Wiltshire: Written Scheme of Investigation for an Archaeological Watching Brief*. Unpublished client report, ref. 105290.03
- Wessex Archaeology 2014d. *Army Basing Programme (ABP), Tidworth, Wiltshire: Written Scheme of Investigation for an Archaeological Watching Brief*. Unpublished client report, ref. 105290.07
- Wessex Archaeology 2014e. *Army Basing Programme (ABP), Bulford, Wiltshire: Written Scheme of Investigation for an Archaeological Watching Brief*. Unpublished client report, ref. 105290.09
- Wessex Archaeology 2014f. *Project Allenby/Connaught, Tidworth, Wiltshire: Archaeological Desk-Based Assessment*. Unpublished client report, ref. 101480.11
- Wessex Archaeology 2014g. *Project Allenby/Connaught, Perham Down, Wiltshire: Archaeological Desk-Based Assessment*. Unpublished client report, ref. 101480.21
- Wessex Archaeology 2014h. *Project Allenby/Connaught, Bulford, Wiltshire: Archaeological Desk-Based Assessment*. Unpublished client report ref. 101480.31
- Wessex Archaeology 2014i. *Project Allenby/Connaught, Larkhill, Wiltshire: Archaeological Desk-Based Assessment*. Unpublished client report, ref. 101480.41



12 APPENDIX 1

12.1 OASIS form (Bulford)

OASIS ID: [wessexar1-197247](#)

Project details

| | |
|--|--|
| Project name | Army Basing Programme (ABP), Bulford |
| Short description of the project | <p>Wessex Archaeology was commissioned by Aspire Defence Capital Works to monitor a programme geotechnical test-pitting at four Military Camps on the Salisbury Plain Defence Training Estates, centred on NGRs 418700 143500 (Bulford), 413400 144900 (Larkhill), 425418 149200 (Perham Down) and 422482 148290 (Tidworth). No archaeological features, deposits or artefacts were encountered during the course of the works. The results concur with conclusions drawn from previous investigations. Large scale landscaping, both building-up and reducing the ground levels, structural development and redevelopment, are in evidence at all four Sites. Undisturbed natural soil horizons, and therefore potentially archaeological remains, exist intermittently across the Sites, sealed below substantial deposits of made-ground and in areas that have remained ostensibly undeveloped since the camps were established. The Bulford and Larkhill Camps were found to have similarly extensive levels of landscaping, as well as limited examples of preserved soil horizons. At Tidworth the landscaping appears more weighted towards the building-up of ground levels, potentially preserving archaeological deposits underneath. At Perham Down it appears that landscaping and development has been comparatively less extensive and less intrusive - though these appraisals are limited to the areas investigated. Across the Sites there remains a moderate to high potential for the survival the archaeological resource in undisturbed areas, and where original soil horizons exist below made-ground deposits. Where there is substantial truncation, whether due to landscaping, foundations or service trenches, the potential for the survival of archaeological features and deposits in that area may be considered low.</p> |
| Project dates | Start: 23-09-2014 End: 07-10-2014 |
| Previous/future work | Yes / Yes |
| Any associated project reference codes | 105290 - Sitecode |
| Any associated project reference codes | 101480 - Sitecode |
| Type of project | Field evaluation |
| Site status | Area of Archaeological Importance (AAI) |
| Current Land use | Other 15 - Other |
| Monument type | NONE None |
| Significant Finds | NONE None |
| Methods & techniques | "Test Pits", "Visual Inspection" |



| | |
|----------------------------------|---|
| Development type | Estate management (i.e. maintenance of existing structures and landscape by capital works and on-going maintenance) |
| Prompt | Planning condition |
| Position in the planning process | Not known / Not recorded |

Project location

| | |
|-------------------|---|
| Country | England |
| Site location | WILTSHIRE SALISBURY BULFORD Bulford Camp |
| Study area | 120.00 Hectares |
| Site coordinates | SU 18700 43500 51.189898266 -1.73238315693 51 11 23 N 001 43 56 W Point |
| Height OD / Depth | Min: 95.00m Max: 130.00m |

Project creators

| | |
|------------------------------|------------------------------|
| Name of Organisation | Wessex Archaeology |
| Project brief originator | Defence Estates |
| Project design originator | Wessex Archaeology |
| Project director/manager | Gareth Chaffey |
| Project supervisor | Ben Cullen |
| Project supervisor | Mike Dinwiddy |
| Project supervisor | Patrick Dresch |
| Type of sponsor/funding body | Developer |
| Name of sponsor/funding body | Aspire Defence Capital Works |

Project archives

| | |
|---------------------------|--|
| Physical Archive Exists? | No |
| Digital Archive recipient | Salisbury and South Wiltshire Museum |
| Digital Contents | "none" |
| Digital Media available | "Images raster / digital photography","Text" |



| | |
|-------------------------|---|
| Paper Archive recipient | Salisbury and South Wiltshire Museum |
| Paper Contents | "none" |
| Paper Media available | "Context sheet", "Diary", "Map", "Report", "Unpublished Text" |

Project bibliography 1

| | |
|-------------------------------|---|
| Publication type | Grey literature (unpublished document/manuscript) |
| Title | Army Basing Programme (ABP), Wiltshire; Bulford, Larkhill, Perham Down and Tidworth: Archaeological Watching Brief Report |
| Author(s)/Editor(s) | Egging Dinwiddy, K. |
| Other bibliographic details | 105290.12 |
| Date | 2014 |
| Issuer or publisher | Wessex Archaeology |
| Place of issue or publication | Salisbury |
| Description | A4 standard client report. Colour illustrations, plates and figures. |

| | |
|------------|---|
| Entered by | Kirsten Egging Dinwiddy (k.dinwiddy@wessexarch.co.uk) |
| Entered on | 4 December 2014 |



12.2 OASIS form (Larkhill)

OASIS ID: wessexar1-197248

Project details

| | |
|--|---|
| Project name | Army Basing Programme (ABP), Larkhill |
| Short description of the project | <p>Wessex Archaeology was commissioned by Aspire Defence Capital Works to archaeologically monitor a programme geotechnical test-pitting at four Military Camps on the Salisbury Plain Defence Training Estates, centred on NGRs 418700 143500 (Bulford), 413400 144900 (Larkhill), 425418 149200 (Perham Down) and 422482 148290 (Tidworth). No archaeological features, deposits or artefacts were encountered during the course of the works. In general the results concur with conclusions drawn from previous investigations. Large scale landscaping, both building-up and reducing the ground levels, structural development and redevelopment, are in evidence at all four Sites. Undisturbed natural soil horizons, and therefore potentially archaeological remains, exist intermittently across the Sites, sealed below substantial deposits of made-ground and in areas that have remained ostensibly undeveloped since the camps were established. The Bulford and Larkhill Camps were found to have similarly extensive levels of landscaping, as well as limited examples of preserved soil horizons. At Tidworth the landscaping appears more weighted towards the building-up of ground levels, potentially preserving archaeological deposits underneath. At Perham Down it appears that landscaping and development has been comparatively less extensive and less intrusive. Across the Sites there remains a moderate to high potential for the survival of the archaeological resource in undisturbed areas, and where original soil horizons exist below made-ground deposits. Where there is substantial truncation, whether due to landscaping, foundations or service trenches, the potential for the survival of archaeological features and deposits in that area may be considered low.</p> |
| Project dates | Start: 22-09-2014 End: 10-10-2014 |
| Previous/future work | Yes / Yes |
| Any associated project reference codes | 105290 - Sitecode |
| Any associated project reference codes | 101480 - Sitecode |
| Type of project | Field evaluation |
| Site status | Area of Archaeological Importance (AAI) |
| Current Land use | Other 15 - Other |
| Monument type | NONE None |
| Significant Finds | NONE None |
| Methods & techniques | "Test Pits", "Visual Inspection" |
| Development type | Estate management (i.e. maintenance of existing structures and landscape by capital works and on-going maintenance) |



Prompt Planning condition

Position in the planning process Not known / Not recorded

Project location

Country England

Site location WILTSHIRE SALISBURY DURRINGTON Larkhill Camp

Study area 165.50 Hectares

Site coordinates SU 12920 44700 51.2008497324 -1.81505732746 51 12 03 N 001 48 54 W
Point

Height OD / Depth Min: 124.00m Max: 126.00m

Project creators

Name of Organisation Wessex Archaeology

Project brief originator Defence Estates

Project design originator Wessex Archaeology

Project director/manager Gareth Chaffey

Project supervisor Ben Cullen

Project supervisor Mike Dinwiddy

Type of sponsor/funding body Developer

Name of sponsor/funding body Aspire Defence Capital Works

Project archives

Physical Archive Exists? No

Digital Archive recipient Salisbury and South Wiltshire Museum

Digital Contents "none"

Digital Media available "Images vector","Text"

Paper Archive recipient Salisbury and South Wilts Museum



| | |
|-----------------------|--|
| Paper Contents | "none" |
| Paper Media available | "Context sheet", "Diary", "Plan", "Report", "Unpublished Text" |

Project bibliography 1

| | |
|-------------------------------|---|
| Publication type | Grey literature (unpublished document/manuscript) |
| Title | Army Basing Programme (ABP), Wiltshire: Bulford, Larkhill, Perham Down and Tidworth; Archaeological Watching Brief Report |
| Author(s)/Editor(s) | Egging Dinwiddy, K. |
| Other bibliographic details | 105290.12 |
| Date | 2014 |
| Issuer or publisher | Wessex Archaeology |
| Place of issue or publication | Salisbury |
| Description | A4 standard client report. Colour plates and figures. |

| | |
|------------|---|
| Entered by | Kirsten Egging Dinwiddy (k.dinwiddy@wessexarch.co.uk) |
| Entered on | 4 December 2014 |



12.3 OASIS form (Perham Down)

OASIS ID: wessexar1-197249

Project details

| | |
|--|--|
| Project name | Army Basing Programme (ABP), Perham Down |
| Short description of the project | <p>Wessex Archaeology was commissioned by Aspire Defence Capital Works to archaeologically monitor a programme geotechnical test-pitting at four Military Camps on the Salisbury Plain Defence Training Estates, centred on NGRs 418700 143500 (Bulford), 413400 144900 (Larkhill), 425418 149200 (Perham Down) and 422482 148290 (Tidworth). No archaeological features, deposits or artefacts were encountered during the course of the works. In general the results concur with conclusions drawn from previous investigations. Large scale landscaping, both building-up and reducing the ground levels, structural development and redevelopment, are in evidence at all four Sites. Undisturbed natural soil horizons, and therefore potentially archaeological remains, exist intermittently across the Sites, sealed below substantial deposits of made-ground and in areas that have remained ostensibly undeveloped since the camps were established. The Bulford and Larkhill Camps were found to have similarly extensive levels of landscaping, as well as limited examples of preserved soil horizons. At Tidworth the landscaping appears more weighted towards the building-up of ground levels, potentially preserving archaeological deposits underneath. At Perham Down it appears that landscaping and development has been comparatively less extensive and less intrusive. Across the Sites there remains a moderate to high potential for the survival the archaeological resource in undisturbed areas, and where original soil horizons exist below made-ground deposits. Where there is substantial truncation, whether due to landscaping, foundations or service trenches, the potential for the survival of archaeological features and deposits in that area may be considered low.</p> |
| Project dates | Start: 18-08-2014 End: 19-08-2014 |
| Previous/future work | Yes / Yes |
| Any associated project reference codes | 105290 - Sitecode |
| Any associated project reference codes | 101480 - Sitecode |
| Type of project | Field evaluation |
| Site status | Area of Archaeological Importance (AAI) |
| Current Land use | Other 15 - Other |
| Monument type | NONE None |
| Significant Finds | NONE None |
| Methods & techniques | "Test Pits", "Visual Inspection" |
| Development type | Estate management (i.e. maintenance of existing structures and landscape by capital works and on-going maintenance) |



Prompt Planning condition

Position in the planning process Not known / Not recorded

Project location

Country England

Site location WILTSHIRE SALISBURY DURRINGTON Perham Down Camp

Study area 37.00 Hectares

Site coordinates SU 25418 49200 51.2408976211 -1.63583911057 51 14 27 N 001 38 09 W
Point

Height OD / Depth Min: 120.00m Max: 130.00m

Project creators

Name of Organisation Wessex Archaeology

Project brief originator Defence Estates

Project design originator Wessex Archaeology

Project director/manager Gareth Chaffey

Project supervisor Ben Cullen

Project supervisor Mike Dinwiddy

Type of sponsor/funding body Developer

Name of sponsor/funding body Aspire Defence Capital Works

Project archives

Physical Archive Exists? No

Digital Archive recipient Salisbury and South Wiltshire Museum

Digital Contents "none"

Digital Media available "Images raster / digital photography", "Text"

Paper Archive recipient Salisbury and South Wiltshire Museum



Paper Contents "none"
Paper Media available "Context sheet", "Diary", "Report", "Unpublished Text"

Project bibliography 1

Publication type Grey literature (unpublished document/manuscript)
Title Army Basing Programme (ABP), Wiltshire: Bulford, Larkhill, Perham Down and Tidworth; Archaeological Watching Brief Report
Author(s)/Editor(s) Egging Dinwiddy, K.
Other bibliographic details 105290.12
Date 2014
Issuer or publisher Wessex Archaeology
Place of issue or publication Salisbury
Description A4 standard client report. Colour plates and figures

Entered by Kirsten Egging Dinwiddy (k.dinwiddy@wessexarch.co.uk)
Entered on 4 December 2014



12.4 OASIS form (Tidworth)

OASIS ID: wessexar1-197250

Project details

| | |
|--|---|
| Project name | Army Basing Programme (ABP), Tidworth |
| Short description of the project | <p>Wessex Archaeology was commissioned by Aspire Defence Capital Works to archaeologically monitor a programme geotechnical test-pitting at four Military Camps on the Salisbury Plain Defence Training Estates, centred on NGRs 418700 143500 (Bulford), 413400 144900 (Larkhill), 425418 149200 (Perham Down) and 422482 148290 (Tidworth). No archaeological features, deposits or artefacts were encountered during the course of the works. In general the results concur with conclusions drawn from previous investigations. Large scale landscaping, both building-up and reducing the ground levels, structural development and redevelopment, are in evidence at all four Sites. Undisturbed natural soil horizons, and therefore potentially archaeological remains, exist intermittently across the Sites, sealed below substantial deposits of made-ground and in areas that have remained ostensibly undeveloped since the camps were established. The Bulford and Larkhill Camps were found to have similarly extensive levels of landscaping, as well as limited examples of preserved soil horizons. At Tidworth the landscaping appears more weighted towards the building-up of ground levels, potentially preserving archaeological deposits underneath. At Perham Down it appears that landscaping and development has been comparatively less extensive and less intrusive. Across the Sites there remains a moderate to high potential for the survival of the archaeological resource in undisturbed areas, and where original soil horizons exist below made-ground deposits. Where there is substantial truncation, whether due to landscaping, foundations or service trenches, the potential for the survival of archaeological features and deposits in that area may be considered low.</p> |
| Project dates | Start: 08-09-2014 End: 22-09-2014 |
| Previous/future work | Yes / Yes |
| Any associated project reference codes | 105290 - Sitecode |
| Any associated project reference codes | 101480 - Sitecode |
| Type of project | Field evaluation |
| Site status | Area of Archaeological Importance (AAI) |
| Current Land use | Other 15 - Other |
| Monument type | NONE None |
| Significant Finds | NONE None |

Project location

| | |
|---------------|--|
| Country | England |
| Site location | WILTSHIRE SALISBURY DURRINGTON Tidworth Camp |



| | |
|-------------------|---|
| Study area | 166.00 Hectares |
| Site coordinates | SU 22482 48290 51.2328375093 -1.67795923945 51 13 58 N 001 40 40 W Point |
| Height OD / Depth | Min: 108.00m Max: 130.00m |

Project creators

| | |
|------------------------------|------------------------------|
| Name of Organisation | Wessex Archaeology |
| Project brief originator | Defence Estates |
| Project design originator | Wessex Archaeology |
| Project director/manager | Gareth Chaffey |
| Project supervisor | Ben Cullen |
| Project supervisor | Mike Dinwiddy |
| Type of sponsor/funding body | Developer |
| Name of sponsor/funding body | Aspire Defence Capital Works |

Project archives

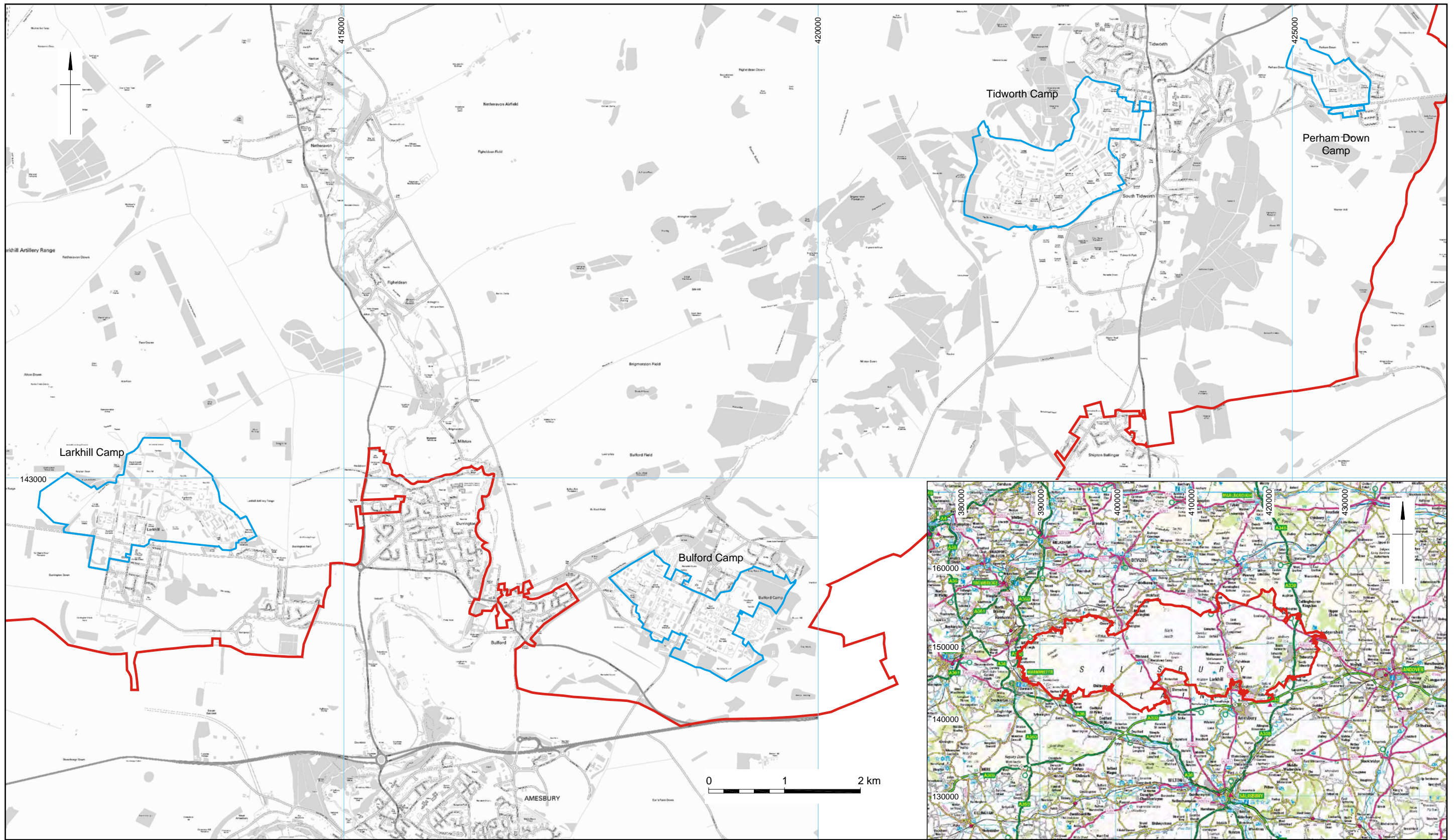
| | |
|---------------------------|--|
| Physical Archive Exists? | No |
| Digital Archive recipient | Salisbury and South Wiltshire Museum |
| Digital Contents | "none" |
| Digital Media available | "Images raster / digital photography", "Text" |
| Paper Archive recipient | Salisbury and South Wiltshire Museum |
| Paper Contents | "none" |
| Paper Media available | "Context sheet", "Diary", "Plan", "Report", "Unpublished Text" |



Project bibliography 1

| | |
|------------------|---|
| Publication type | Grey literature (unpublished document/manuscript) |
|------------------|---|



| | |
|-------------------------------|---|
| Title | Army Basing Programme (ABP), Wiltshire: Bulford, Larkhill, Perham Down and Tidworth; Archaeological Watching Brief Report |
| Author(s)/Editor(s) | Egging Dinwiddy, K. |
| Other bibliographic details | 105290.12 |
| Date | 2014 |
| Issuer or publisher | Wessex Archaeology |
| Place of issue or publication | Salisbury |
| Description | A4 standard client report. Colour plates and figures |
| <hr/> | |
| Entered by | Kirsten Egging Dinwiddy (k.dinwiddy@wessexarch.co.uk) |
| Entered on | 4 December 2014 |



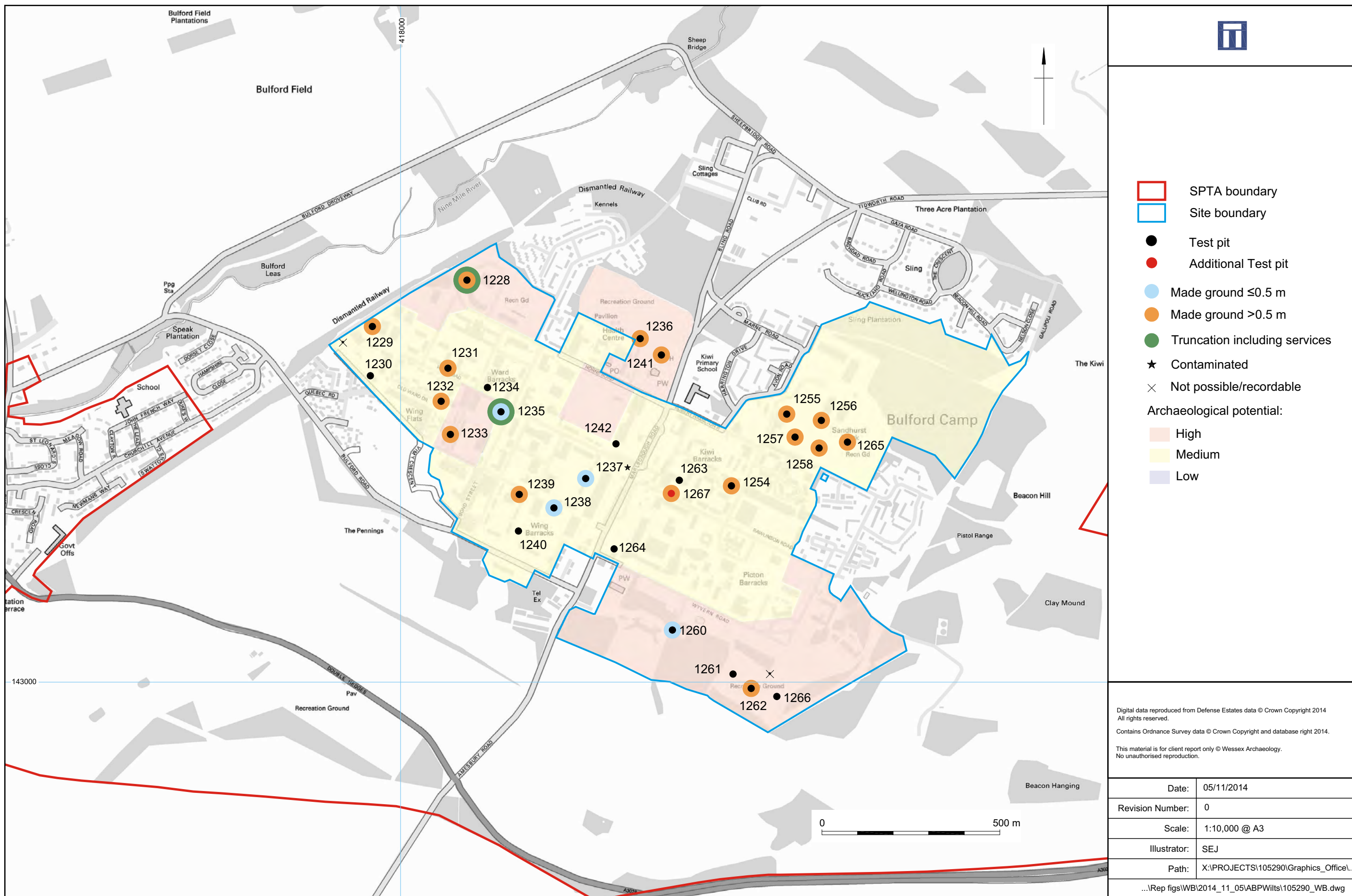
 SPTA boundary
 Site boundary

Digital data reproduced from Defense Estates data © Crown Copyright 2014. All rights reserved.
 Contains Ordnance Survey data © Crown Copyright and database right 2012.
 This material is for client report only © Wessex Archaeology. No unauthorised reproduction.

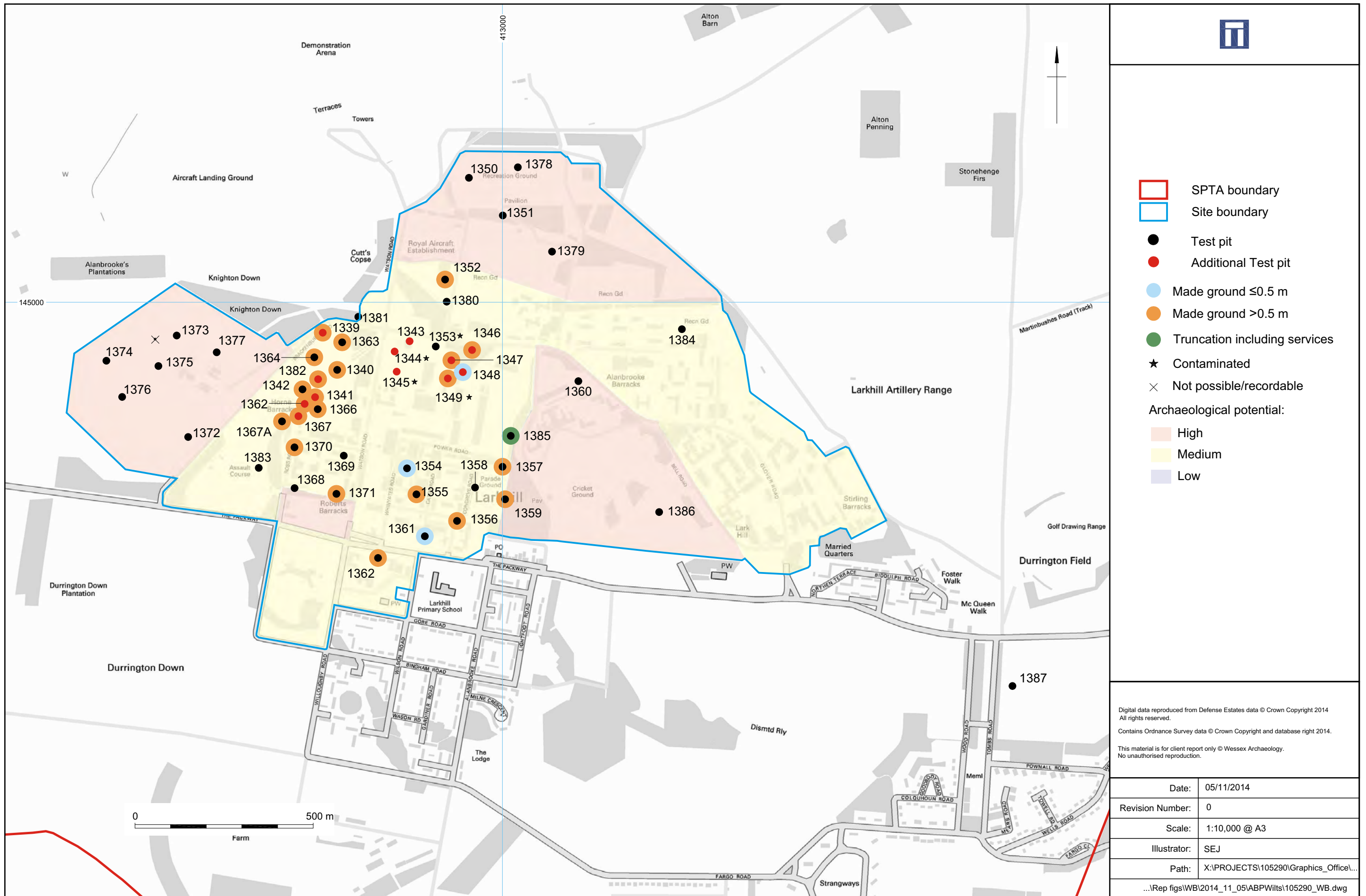
| | | | |
|--------|--|------------------|-----|
| Date: | 05/11/2014 | Revision Number: | 0 |
| Scale: | 1:500000 & 1:50000 @ A3 | Illustrator: | SEJ |
| Path: | X:\PROJECTS\105290\Graphics_Office\Rep figs\WB\2014_11_05\ABPWilts\105290_WB.dwg | | |

Location of ABP sites in Wiltshire

Figure 1

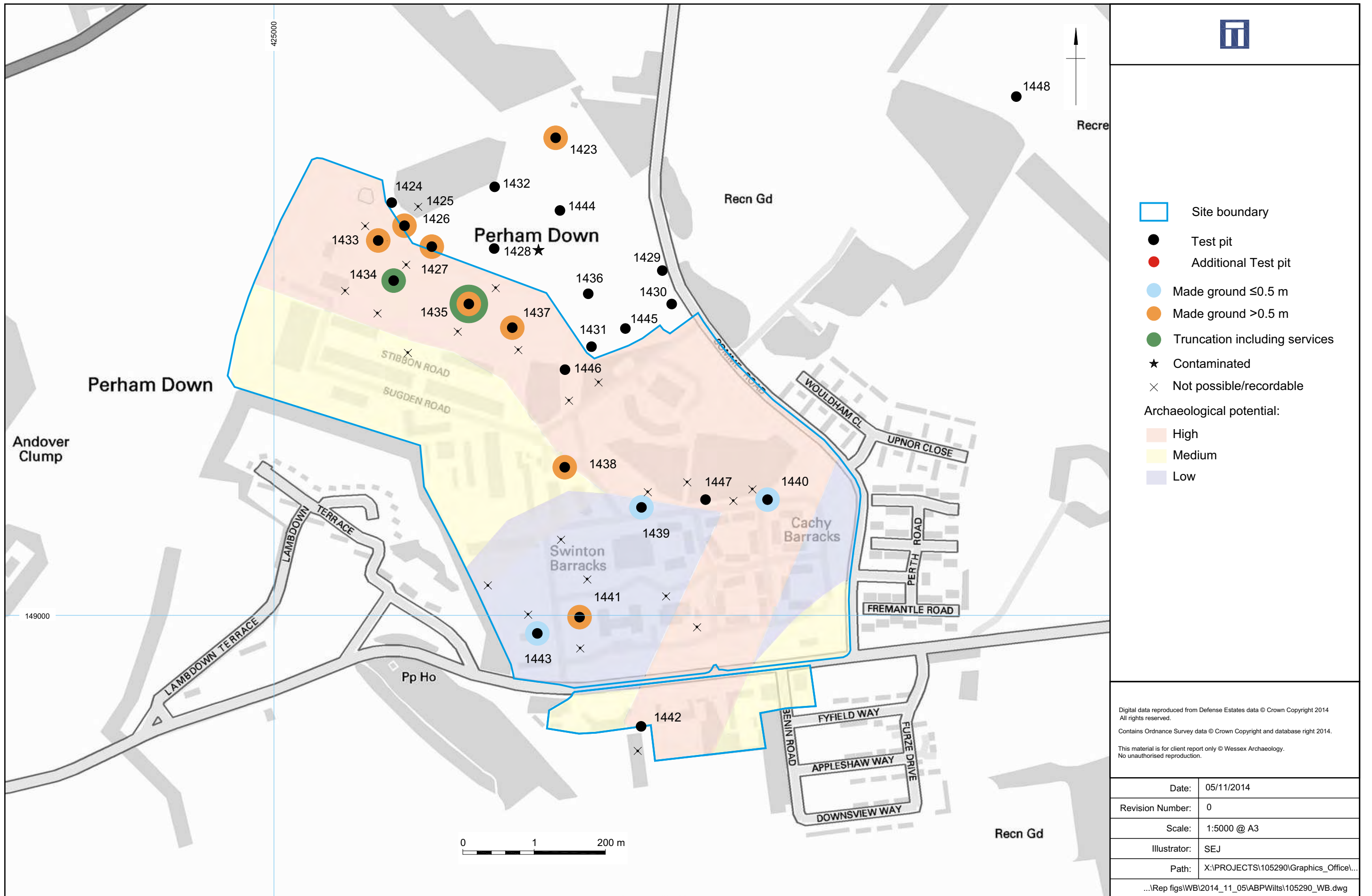


Site plan and Test pit locations - Bulford Camp



Site plan and Test pit locations - Larkhill Camp

Figure 3



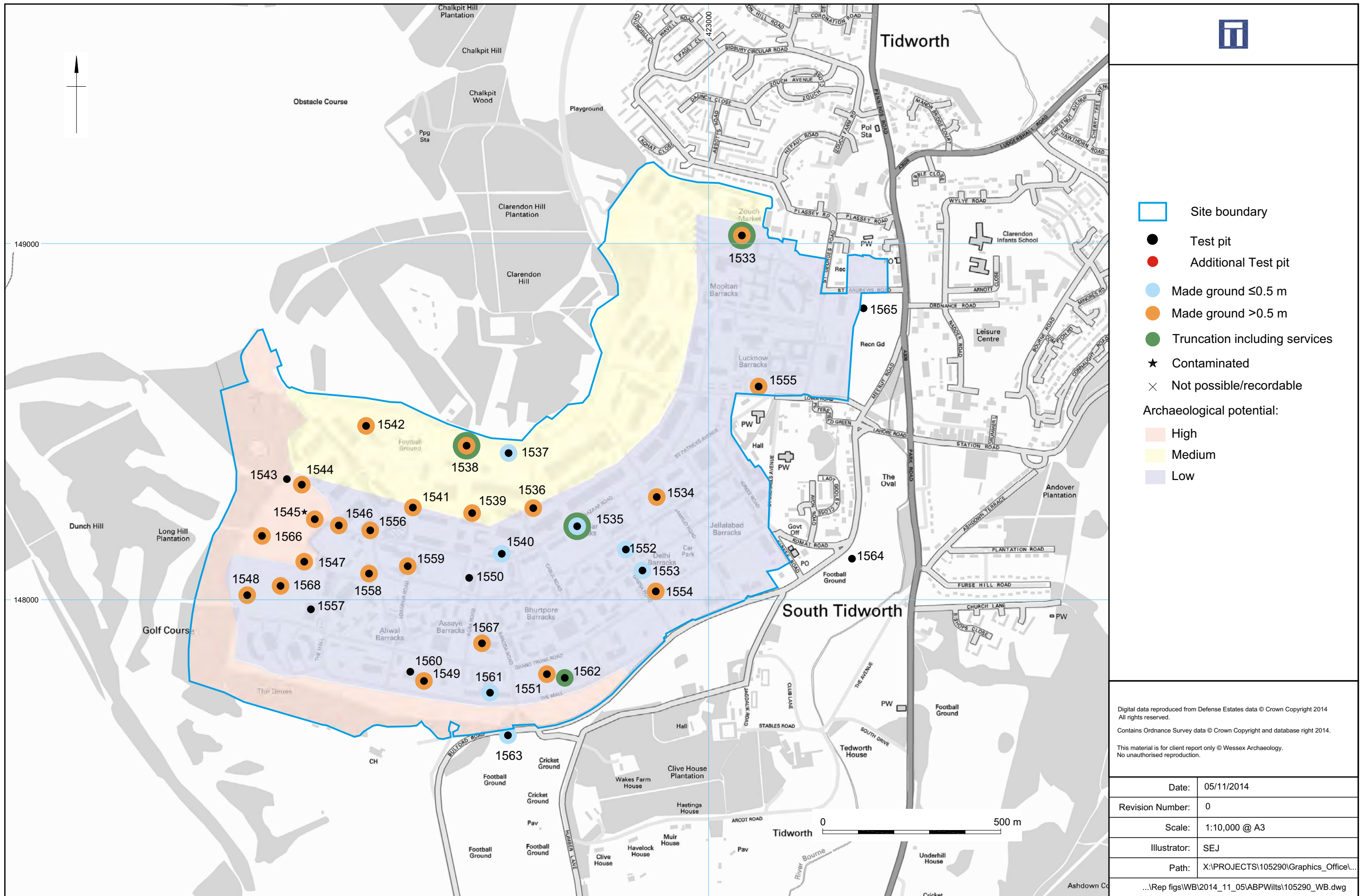
- Site boundary
 - Test pit
 - Additional Test pit
 - Made ground ≤0.5 m
 - Made ground >0.5 m
 - Truncation including services
 - Contaminated
 - Not possible/recordable
- Archaeological potential:
- High
 - Medium
 - Low

Digital data reproduced from Defense Estates data © Crown Copyright 2014
All rights reserved.
Contains Ordnance Survey data © Crown Copyright and database right 2014.
This material is for client report only © Wessex Archaeology.
No unauthorised reproduction.

| | |
|---|--|
| Date: | 05/11/2014 |
| Revision Number: | 0 |
| Scale: | 1:5000 @ A3 |
| Illustrator: | SEJ |
| Path: | X:\PROJECTS\105290\Graphics_Office\... |
| ...Rep figs\WB\2014_11_05\ABPW\Wils\105290_WB.dwg | |

Site plan and Test pit locations - Perham Down Camp

Figure 4



Site plan and Test pit locations - Tidworth Camp

Figure 5



Plate 1: Bulford: working shot near Test pit 1266



Plate 2: Bulford: working shot near Test pit 1266


| | | | | |
|---|---|--|------------------|-----|
|  | This material is for client report only © Wessex Archaeology. No unauthorised reproduction. | | | |
| | Date: | 06/11/2014 | Revision Number: | 0 |
| | Scale: | N/A | Illustrator: | SEJ |
| | Path: | X:\PROJECTS\105290\Graphics Office\Rep figs\WB\14-11_05\APBW\ilts\105290_WB_Bulford_plates.cdr | | |



Plate 3: Bulford: Test pit 1256 from the east showing substantial made-ground



Plate 4: Bulford: Test pit 1257 from the west, showing substantial made-ground


| | | | | |
|---|---|---|------------------|-----|
|  | This material is for client report only © Wessex Archaeology. No unauthorised reproduction. | | | |
| | Date: | 06/11/2014 | Revision Number: | 0 |
| | Scale: | N/A | Illustrator: | SEJ |
| | Path: | X:\PROJECTS\105290\Graphics Office\Rep figs\WB\14-11_05\APBWilts\105290_WB_Bulford_plates.cdr | | |



Plate 5: Larkhill: deep sequence of made- ground in Test pit 1364 (from the south-west)



Plate 6: Larkhill: hand-excavation (Test pit 1347)


| | | | | |
|---|---|---|------------------|-----|
|  | This material is for client report only © Wessex Archaeology. No unauthorised reproduction. | | | |
| | Date: | 06/11/2014 | Revision Number: | 0 |
| | Scale: | N/A | Illustrator: | SEJ |
| | Path: | X:\PROJECTS\105290\Graphics Office\Rep figs\WB\14-11_05\APBW\lits\105290_WB_Larkhill_plates.cdr | | |



Plate 7: Larkhill: machine excavation (Test pit 1340)


| | | | | |
|---|---|--|------------------|-----|
|  | This material is for client report only © Wessex Archaeology. No unauthorised reproduction. | | | |
| | Date: | 06/11/2014 | Revision Number: | 0 |
| | Scale: | N/A | Illustrator: | SEJ |
| | Path: | X:\PROJECTS\105290\Graphics Office\Rep figs\WB\14-11_05\APBW\105290_WB_Larkhill_plates.cdr | | |



Plate 8: Larkhill: machine excavation (Test pit 1366)



Plate 9: Larkhill: Test pit 1378 from the east, showing natural soil sequence


| | | | | |
|---|---|--|------------------|-----|
|  | This material is for client report only © Wessex Archaeology. No unauthorised reproduction. | | | |
| | Date: | 06/11/2014 | Revision Number: | 0 |
| | Scale: | N/A | Illustrator: | SEJ |
| | Path: | X:\PROJECTS\105290\Graphics Office\Rep figs\WB\14-11_05\APBW\105290_WB_Larkhill_plates.cdr | | |



Plate 10: Perham Down: borehole sampling



Plate 11: Perham Down: Test pit 1442 from the south, showing natural soil sequence


| | | | | |
|---|---|---|------------------|-----|
|  | This material is for client report only © Wessex Archaeology. No unauthorised reproduction. | | | |
| | Date: | 06/11/2014 | Revision Number: | 0 |
| | Scale: | N/A | Illustrator: | SEJ |
| | Path: | X:\PROJECTS\105290\Graphics Office\Rep figs\WB\14-11_05\APBW\105290_WB_Bulford_plates.cdr | | |



Plate 12: Perham Down: machine excavating into a bank (Test pit 1433)



Plate 13: Perham Down: Victorian made-ground layers, overlying original ground surface in Test pit 1427 (from the east)


| | | | | |
|---|---|---|------------------|-----|
|  | This material is for client report only © Wessex Archaeology. No unauthorised reproduction. | | | |
| | Date: | 06/11/2014 | Revision Number: | 0 |
| | Scale: | N/A | Illustrator: | SEJ |
| | Path: | X:\PROJECTS\105290\Graphics Office\Rep figs\WB\14-11_05\APBWilts\105290_WB_Bulford_plates.cdr | | |



Plate 14: Tidworth: modern animal burial and made-ground in Test pit 1537 (from the north)



Plate 15: Tidworth: Test pit 1542 (from the east), banked chalk


| | | | | |
|---|---|--|------------------|-----|
|  | This material is for client report only © Wessex Archaeology. No unauthorised reproduction. | | | |
| | Date: | 06/11/2014 | Revision Number: | 0 |
| | Scale: | N/A | Illustrator: | SEJ |
| | Path: | X:\PROJECTS\105290\Graphics Office\Rep figs\WB\14-11_05\APBWilts\105290_WB_Tidworth_plates.cdr | | |



Plate 16: Tidworth: Test pit 1566 from the west, showing deep made-ground



Plate 17: Tidworth: large Sarsen boulder from Test pit 1565


| | | | | |
|---|---|--|------------------|-----|
|  | This material is for client report only © Wessex Archaeology. No unauthorised reproduction. | | | |
| | Date: | 06/11/2014 | Revision Number: | 0 |
| | Scale: | N/A | Illustrator: | SEJ |
| | Path: | X:\PROJECTS\105290\Graphics Office\Rep figs\WB\14-11_05\APBW\105290_WB_Tidworth_plates.cdr | | |



Plate 18: Tidworth: Test pit 1539 from the south, showing series of made-ground deposits



Plate 19: Tidworth: Test pit 1568 from the east, showing made-ground over original ground surface


| | | | | |
|---|---|--|------------------|-----|
|  | This material is for client report only © Wessex Archaeology. No unauthorised reproduction. | | | |
| | Date: | 06/11/2014 | Revision Number: | 0 |
| | Scale: | N/A | Illustrator: | SEJ |
| | Path: | X:\PROJECTS\105290\Graphics Office\Rep figs\WB\14-11_05\APBW\105290_WB_Tidworth_plates.cdr | | |



Plate 20: Tidworth: Test pit 1549 from the east, showing redeposited chalk over earlier made-ground deposits



| | | | | |
|---|---|--|------------------|-----|
|  | This material is for client report only © Wessex Archaeology. No unauthorised reproduction. | | | |
| | Date: | 06/11/2014 | Revision Number: | 0 |
| | Scale: | N/A | Illustrator: | SEJ |
| | Path: | X:\PROJECTS\105290\Graphics Office\Rep figs\WB\14-11_05\APBW\105290_WB_Tidworth_plates.cdr | | |



Plate 21: Tidworth: Test pit 1551 from the north, showing natural soil sequence



Plate 22: Tidworth: hand-dug Test pit 1557

| | | | | |
|---|---|--|------------------|-----|
|  | This material is for client report only © Wessex Archaeology. No unauthorised reproduction. | | | |
| | Date: | 06/11/2014 | Revision Number: | 0 |
| | Scale: | N/A | Illustrator: | SEJ |
| | Path: | X:\PROJECTS\105290\Graphics Office\Rep figs\WB\14-11_05\APBW\lts\105290_WB_Tidworth_plates.cdr | | |



Wessex Archaeology Ltd registered office Portway House, Old Sarum Park, Salisbury, Wiltshire SP4 6EB
Tel: 01722 326867 Fax: 01722 337562 info@wessexarch.co.uk www.wessexarch.co.uk



Wessex Archaeology Ltd is a company limited by guarantee registered in England, company number 1712772. It is also a Charity registered in England and Wales, number 287786; and in Scotland, Scottish Charity number SC042630. Our registered office is at Portway House, Old Sarum Park, Salisbury, Wiltshire SP4 6EB.