



Feature recording (1.1)

1C20WRBTT / 43 / 75 / 7504 / Furrow

Complete

Score	3.94%	Failed items	0	Actions	0
-------	-------	--------------	---	---------	---

Site 1C20WRBTT, HS2-C,
Northamptonshire

Field number 43

Trench number 75

In the following provide a very brief description of the feature , eg, pit, grave, linear transect cut. This will be used in the archaeological report

Feature description

Furrow

FeatureID= This is the parent context number of the feature, for example the pit which contains the pit fills, the grave cut that contains the coffin , fills and skeleton. A feature may comprise a single context for example un-bounded spread, in which case the Feature ID and the single context number recorded below would be the same. FEATUREID IS A WHOLE NUMBER DO NOT USE DECIMALS

Feature ID (Parent context) 7504

Feature photos



Photo 1

Feature dimensions in meters

Length

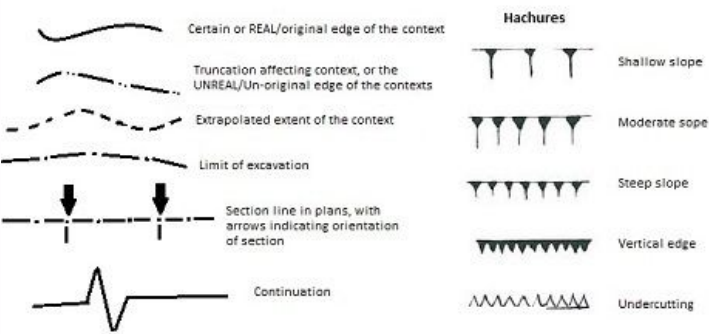
Width 0.9

Depth 0.35

Diameter

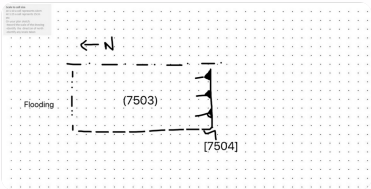
Feature sketch plan

Sketch plan: This should be broadly representative of the feature and any relevant surroundings. You may sketch the feature and/or its relation to other notable features on the site . If a sketch is done, indicate on the scale area (top right of sheet) the rough scale of your drawing and add a north arrow, but remember this is a sketch not a measured plan. Press the 'Annotate' button to begin a drawing



- 7703 Cut numbers - bold text
- 7702 Fills & deposits numbers - regular text
- 7632 Structure numbers - regular underlined text
- 7654 Section numbers - italic text
- 7654 Sample number regular Orange
- 7865 Find numbers regular blue
- 8765 Monolith sample numbers regular green

Sketch

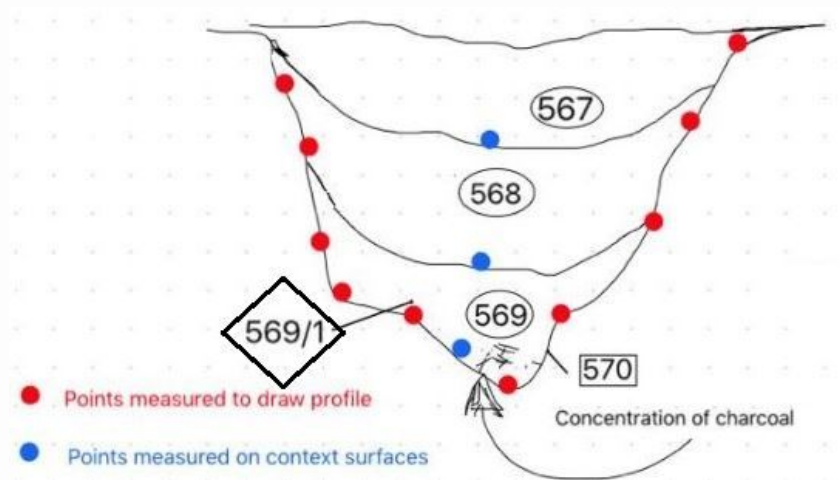


Section recording

Record here the direction the section is facing

Section facing	W
Levels OD Top	
Levels OD Bottom	
Section photos	
Section sketch	

Sketch of section: This drawing should represent an accurate profile of a cut feature or elevation of an upstanding feature and the relative depth, or height, along with the relationships of cuts, fills layers and structures. A simple example section is shown here with attention drawn to the vertically measured points to draw profile and fill surfaces.



Use the Arrette drawing app installed on this iPad to make the drawing. Ensure that the ends of your section line and their alignment are shown, and please use a thicker lines for the parent context profiles and/or structures (e.g. facing of a wall), and thinner ones for other context divisions. Once you have finished your drawing in the Arrette app, Click project > Click on current doc, and set document name to be that of the parent context (s) shown, separated by a space e.g. 123 134. Finally click 'Share'>'JPEG to your photos', to add the images to the photo roll on that iPad. Once done come back to this audit and upload your newly created JPEG

Upload section sketch

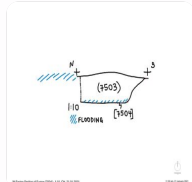


Photo 2

Comments

Recorded by

CH

Record date

21 Jan 2021 15:00 GMT

Account name (leave)

Mpad 7

Stratigraphy and constituent contexts

3.94%

Stratigraphy and constituent contexts

Enter here all the stratigraphic (not physical) relationships in this feature as pairs of upper and lower contexts. Use the green button to enter as many pairs as required. Contexts are always WHOLE NUMBERS do not use decimals

Stratigraphic relationships in this feature

Stratigraphic relationships in this feature 1

Upper context	7501
---------------	------

Lower context	7503
---------------	------

Stratigraphic relationships in this feature 2

Upper context	7503
---------------	------

Lower context	7504
---------------	------

Stratigraphic relationships in this feature 3

Upper context	7504
---------------	------

Lower context	7502
---------------	------

Contexts making up this feature

3.94%

Contexts making up this feature 1

3.7%

Context number	7503
----------------	------

These are the other contexts with which this context is in contact or is the same as

Physical relationships

Fills	7504
-------	------

Filled by

Cuts

Cut by

Overlies

Overlain by

Abutts

Part of

Same as

Description and interpretation

Your interpretation is a simple elaboration on the basic interpretation if absolutely necessary.

Your interpretation

Fill of furrow

Your discussion. Here you can explain why you have come to this conclusion, if the rationale is not self evident. It is the most important of your responses

Your discussion

Primary fill of furrow, significant disturbance with natural. Not fully excavated to the N margin due to flooding.

Context dimensions

Record this only if the context's dimensions differ markedly from those of the features a whole. As a minimum, record the depth of fills

Length

Width

0.9

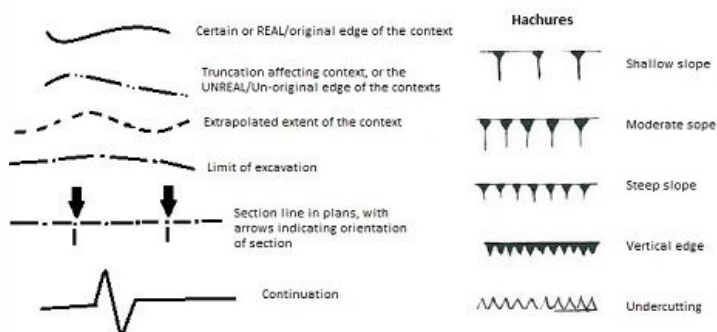
Depth

0.35

Diameter

Context sketch plan

Record this only if the contexts plan differs markedly from that of the feature as a whole



7703 Cut numbers - bold text

7702 Fills & deposits numbers - regular text

7632 Structure numbers - regular underlined text

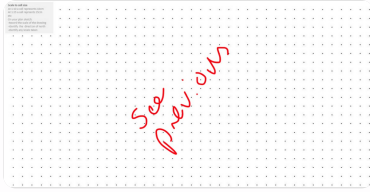
7654 Section numbers - italic text

7654 Sample number regular Orange

7865 Find numbers regular blue

8765 Monolith sample numbers regular green

Sketch



Context type

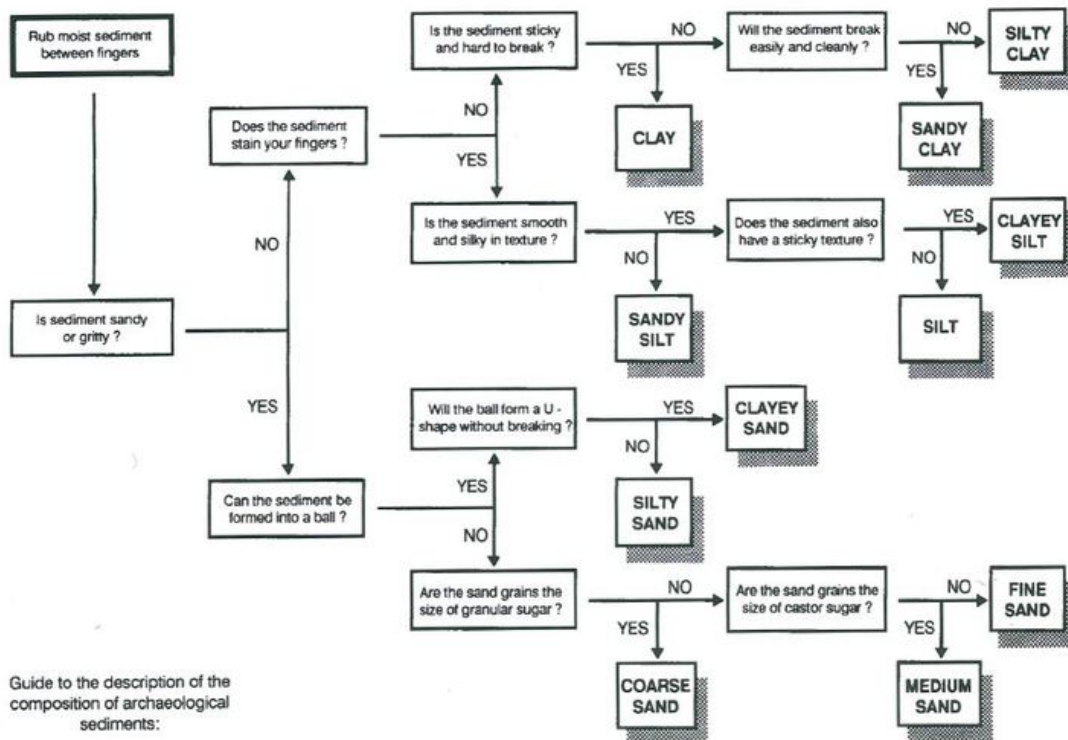
Fill or deposit

Context composition

3.7%

This section has three components, a) The soil matrix of which the context comprises and it's degree of compaction, b) major inclusions and c) minor inclusions.

Soil matrix. Choose the composition of the soil present. example. refer to the diagram if necessary. For contexts almost entirely composed of find or environmental material , choose other, and note the material in the succeeding sections.



Soil composition

Silty clay

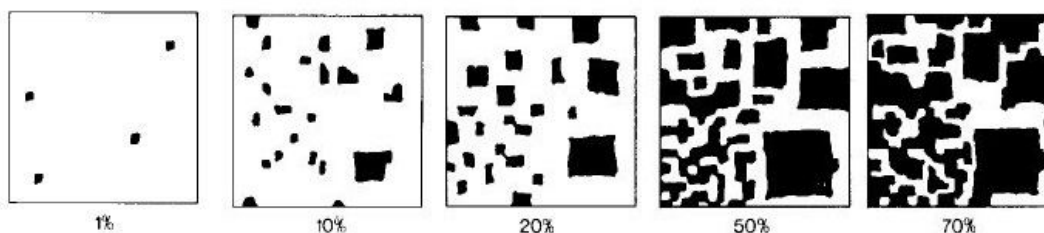
Soil consistency describes properties of the deposit when handled. Sandy deposits are cemented , compact or loose, while more clayey and silty deposits are typically firm, plastic or friable.

- ▶ A deposit which is **cemented** requires a mattock to excavate and clumps cannot be broken by hand once they have been removed.
- ▶ A deposit which is **compact** requires a mattock to excavate but clumps can be broken by hand once they have been removed.
- ▶ A deposit which is **loose** can be excavated with a trowel or hoe.
- ▶ A deposit which is **hard** cannot be moulded and a clump will break, rather than bend, when enough force is applied.
- ▶ A deposit which is **firm** can be moulded by hand under strong pressure.
- ▶ A deposit which is **plastic** can be easily moulded and bent.
- ▶ A deposit which is **friable** cannot be moulded and will crumble under pressure.

Soil consistency

Firm

Major inclusions are finds and environmental materials which make up more than 10 % of the context and will typically be bagged up as bulk finds. Tick all that apply and if necessary add a note to the inclusion description.



Major artefactual inclusions

Major environmental or natural inclusions

Minor Inclusion are find or environmental elements that make up less than 10% tick all that apply, and if necessary add a note to the inclusion description.

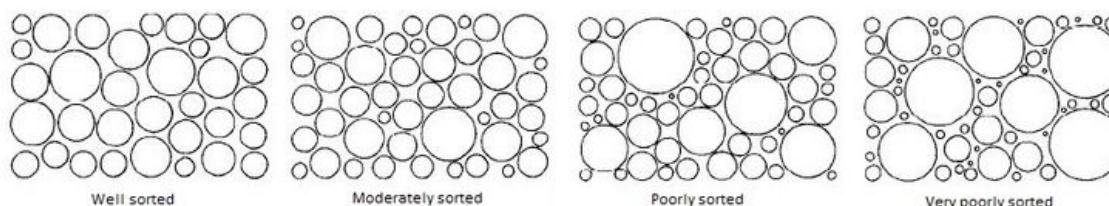
Minor artefactual inclusions

Minor environmental or natural inclusions

Degree of sorting

2.74%

Sorting is a measure of the frequency with which particles of the same size occur.



Sorting

Moderately

Sizing - use the sliders to indicate the diameter in mm from the smallest to the largest

Smallest stone size(mm)

5

From 5 to 200

Largest stone size(mm)

5

From 5 to 200

Colours

100%

Main colour

Brown

Colour hue

Greyish

Colour tone

Mid

Other colour notes

Greyish brown fill with significant orange mottling throughout

Boundary to the next horizon. This should always refer to the lower boundary of the deposit that is described, and not the upper, since the latter may have been truncated

Boundary edge

Clear - change occurs within 25-60mm

Boundary character

Wavy - boundary surface has broad shallow relatively regular pockets

Contexts making up this feature 2

100%

Context number

7504

These are the other contexts with which this context is in contact or is the same as

Physical relationships

Fills

Filled by

7503

Cuts

Cut by

Overlies

Overlain by

Abutts

Part of

Same as

Description and interpretation

Your interpretation is a simple elaboration on the basic interpretation if absolutely necessary.

Your interpretation

Cut of furrow

Your discussion. Here you can explain why you have come to this conclusion, if the rationale is not self evident. It is the most important of your responses

Your discussion

Shallow furrow with significant mixing with natural. Clear base with true natural.

Context dimensions

Record this only if the context's dimensions differ markedly from those of the features a whole. As a minimum, record the depth of fills

Length

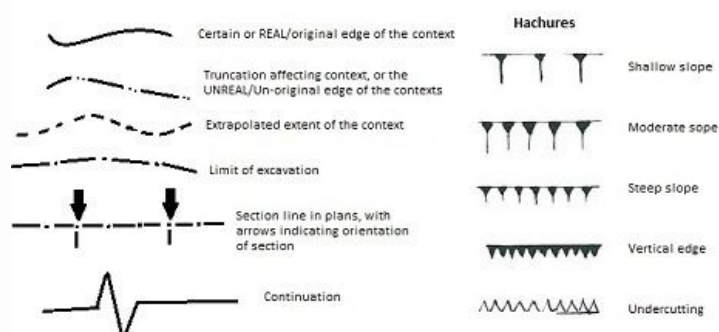
Width 0.9

Depth 0.36

Diameter

Context sketch plan

Record this only if the contexts plan differs markedly from that of the feature as a whole



7703 Cut numbers - bold text

7702 Fills & deposits numbers - regular text

7632 Structure numbers - regular underlined text

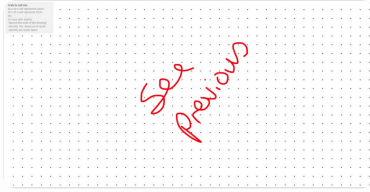
7654 Section numbers - italic text

7654 Sample number regular Orange

7865 Find numbers regular blue

8765 Monolith sample numbers regular green

Sketch



Context type

Cut

Shape of the cut

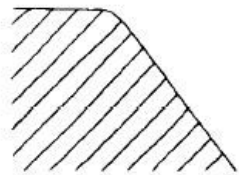
100%

Shape in plan

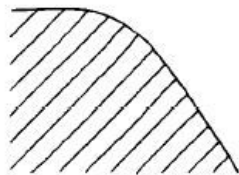
Linear-straight

Orientation

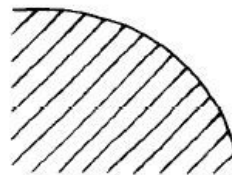
EW



Sharp



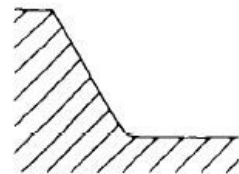
Gradual



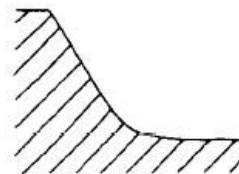
Not perceptible

Break of slope - top

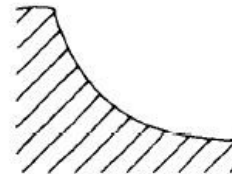
Gradual



Sharp



Gradual



Not perceptible

Break of slope - base

Gradual

Profile type

Stepped

Side form

Convex



A tapered point



A tapered blunt point



A tapered rounded point



Vertical sides and a flat base



Vertical sides and an undulating base



Undulating sides and base

Base form

Undulating/irregular

If a cut does not have its original form and is truncated by later feature(s), tick this box and record something in the further notes field a note to say where and if possible, what is truncating it

Truncated

No

Further notes

Not fully excavated due to flooding.

Record administration and sign off

Record administration and sign off

IMPORTANT - This recording sheet should only have it's 'Person approving this record' and 'Date approved ' fields filled in when no more edits are necessary. Once this is done the sheet is then ingested into the Oracle system and any subsequent edits will need to be done therein.

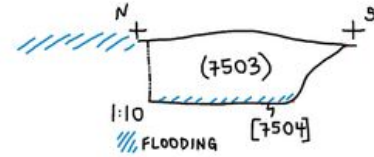
Excavated by	CH
Date excavation started	21 Jan 2021
Person approving this record	SAF
Date approved	25 Jan 2021

Appendix

Appendix



Photo 1



W Facing Section of Furrow (7504) - 1:10, CH, 21.01.2001

11.00 am, 21 January 2001

Photo 2