



# HERITAGE NETWORK



## **35-41 SILVER STREET Enfield, Middx.**

(HN470 / SVS04)

*Historic Building Record &  
Archaeological Evaluation Report*



# THE HERITAGE NETWORK LTD

*Registered with the Institute of Field Archaeologists as an Archaeological Organisation*

Archaeological Director: David Hillelson, BA MIFA

35-41 SILVER STREET  
Enfield, Middlesex.  
TQ 3288 9668

HN470

SVS04

## *Historic Building Record and Archaeological Evaluation Report*

*Prepared on behalf of Nikon Developments Ltd*

*by*

David Kaye, BA and Karin Semmelmann, MA PIFA

Report No.248

*August 2004*

© The Heritage Network Ltd

**11 FURMSTON COURT, ICKNIELD WAY, LETCHWORTH SG6 1UJ**  
**TELEPHONE: (01462) 685991 FAX: (01462) 685998**

## Contents

	Summary .....	Page i
Section 1	Introduction .....	Page 1
Section 2	Historic Building Record .....	Page 2
Section 3	Fieldwork.....	Page 5
Section 4	Discussion.....	Page 9
Section 4	Sources Consulted.....	Page 10
Section 5	Illustrations .....	<i>following</i> Page 10
Appendix 1	Black & White Photographic Log.....	Page 11
Appendix 2	Digital Photographic Log .....	Page 12

*The cover photo shows nos.35 – 41 Silver Street at the time of the present study, with no.35 on the right hand side*

## Acknowledgements

The fieldwork for this project was carried out David Hillelson, Karin Semmelmann, Chris Turner, Geoff Saunders and David Kaye, and the finds assessment was undertaken by Helen Ashworth. Illustrations were prepared by David Kaye, and the report was edited by David Hillelson.

The Heritage Network would like to express its thanks to Robert J. Nicholas and Sharon Pauline, Nikon Developments Limited; Graham Dalling, Enfield Local History Unit; and Kim Stabler, Greater London Archaeology Advisory Service for their co-operation and assistance.

## Summary

<b>Site name &amp; address:</b>	35-41 Silver Street, Enfield, Middlesex		
<b>County:</b>	Middlesex	<b>District:</b>	London Borough of Enfield
<b>Village/town:</b>	Enfield	<b>Parish:</b>	Enfield
<b>Planning reference:</b>	N/a	<b>NGR:</b>	TQ 3288 9668
<b>Client name &amp; address:</b>	Nicon Developments, Nicon House, 45 Silver Street, Enfield, EN1 3EF		
<b>Nature of work:</b>	New restaurant & flats	<b>Present land use:</b>	Shops, flats and gardens
<b>Size of affected area:</b>	c.395m <sup>2</sup>	<b>Size of area investigated:</b>	c.12.4m <sup>2</sup>
<b>Site Code:</b>	HN470	<b>Other reference:</b>	SVS 04
<b>Organisation:</b>	Heritage Network	<b>Site Director:</b>	David Hillelson
<b>Type of work:</b>	Evaluation	<b>Archive location:</b>	Museum of London
<b>Start of work</b>	8 <sup>th</sup> July 2004	<b>Finish of work</b>	14 <sup>th</sup> July 2004
<b>Related SMR Nos.:</b>	N/a	<b>Periods represented:</b>	Post-med/Victorian/Modern
<b>Previous reports:</b>	N/a		

### Synopsis:

In order to determine the archaeological risk posed by a proposal to construct a restaurant and flats on the site of 35-41 Silver Street, Enfield, Middlesex, the Heritage Network was commissioned by Nikon Developments Ltd to undertake a programme of historic building recording and archaeological evaluation.

The building record focused on no.35 Silver Street, a much altered early 18<sup>th</sup> century structure, including a number of well preserved original features.

The field evaluation consisted of a single trial trench measuring c.2m x 6.2m, located to the rear of no.35 and within the footprint of the proposed new building. There was evidence that substantial ground disturbance had taken place, which was possibly associated with the demolition of earlier structures in the 19<sup>th</sup> century. This is in line with the cartographic evidence. Apart from a single unstratified sherd of pottery there was no evidence of Medieval or earlier activity on the site.

# 1. Introduction

**1.1** This report has been prepared on behalf of *Nicon Developments Ltd*, as part of an archaeological investigation associated with the redevelopment of 35-41 Silver Street, Enfield, Middlesex (Fig.1). The determination of the planning application for the development by the London Borough of Enfield (LBE), has been referred back to the applicants for further information on the archaeological potential of the site. This is in accordance with the provisions set out in Planning Policy Guidance Note No.16 (PPG16) on Archaeology and Planning. The scope of the required investigation has been discussed with staff at the *Greater London Archaeology Advisory Service (GLAAS)*, a department of English Heritage acting as advisers to LBE.

**1.2** The study area focuses on a block of four buildings on the eastern side of Silver Street, centred on NGR TQ 3288 9668. The development proposes the demolition of the existing buildings and the construction of a single unit to be used as a restaurant/bar (Fig.2).

**1.3** The site lies in the historic core of Enfield, close to the parish church which has existed on its present site since at least the 12<sup>th</sup> century, and close to the site of Enfield Manor and Palace. The Greater London Sites and Monuments Record shows a significant number of historic and listed buildings in the immediate vicinity of the site, and it is likely that the present buildings, which are not listed, have been built on the site of post-medieval, medieval or earlier structures.

**1.4** On the basis of the known archaeology in the area it was considered that the site might offer the potential to contribute to our understanding of:

- the origins and development of settlement in Enfield;
- the transition from early to later medieval periods and the influences on settlement growth and development;
- development and change in the post-medieval period.

**1.5** The aim of the historic building record has been to preserve by record no.35 Silver Street, which pre-dates the modern period and whose retention has not been considered desirable, and provide an historic archive which can contribute to the understanding of development and change in the post-medieval townscape.

**1.6** The aim of the evaluation will have been to assess the risk that buried archaeological remains might be encountered in the course of the development works, and to consider the location, extent, date, character, condition, significance and quality of any such remains, together with their archaeological and historical context, if they were found to be present.

**1.7** The present report has been prepared in order to provide the planning authority with sufficient data to allow it to consider the archaeological implications of the proposed development, and to determine what further mitigation measures, if any, may be required.

## 2. Historic Building Record

### *General*

**2.1** Number 35 Silver Street is the southernmost building in the row of otherwise modern buildings comprising the present study. Its western elevation fronts the High Street and an access arch to the north of the building leads to a yard with outbuildings to the rear (Fig.2).

**2.2** The ground floor has been subdivided to provide a shop and ancillary rooms on the street frontage and a kitchen and dining room to the rear. A modern extension to the rear of the property houses a store and outside WC on the ground floor and a bathroom on the first floor (Fig.3).

### *External elevations*

**2.3** The building is of a light timber frame with brick nogging. The rear of the property is weatherboarded, and where this was removed it could be seen that the bricks beneath were unpainted. This is in contrast to the access arch, where the bricks have been painted white.

**2.4** The weatherboarding itself has been painted black. The timbers are largely roughly cut, and many have waney edges. A nail taken from a section of weatherboarding has a rectangular profile and no head, which suggests that it could date from the late 17<sup>th</sup> to early 19<sup>th</sup> century (Taylor). That this may have been the intended covering for this elevation is suggested by the fact that the bricks beneath the weatherboarding are not painted or rendered over.

**2.5** Most of the windows are later 19<sup>th</sup> century sash windows with one earlier 18<sup>th</sup> century window in Bedroom 3.

**2.6** The south elevation of the access arch has been breached for windows and a door. The north elevation contains a chimney support.

### *Internal*

**2.7** The living area is on two floors, with the kitchen and dining room on the ground floor and a living room, three bedrooms and a bathroom on the first floor. The staircase leads off from the dining room. There is no current access to the living area from the shop, which has been entirely remodelled with modern partitioning and suspended ceiling, and no original features were observable.

### *Kitchen (Fig.4)*

**2.8** The kitchen is in a flat-roofed extension to the north of the building. A door in the north elevation leads out to the yard and there are three windows of varying size in the same elevation.

**2.9** The working area is on the eastern side of the room, where a serving hatch allows access to the dining room.

**2.10** An archway in the south elevation leads through to the dining room.

#### ***Dining room (Fig.4)***

**2.11** This room retains no original features. There is a modern fireplace in the east elevation and the stair is accessed via a door in the west elevation.

#### ***Living room (Fig.5)***

**2.12** The living room overlooks Silver Street. Original panelling has been revealed underneath later plasterwork on the north and east walls. The panelling is full height with a chair rail just below the mid point. The panelling is of pine, which has been painted a number of times. (Plate 1a)

**2.13** The blocked fireplace was opened to reveal a cast iron fire. Both the opening and the grate were based on the form of a scallop shell. Actual oyster shells were found mortared into the wall to the top left of the fireplace. (Plate 1b)

**2.14** The panelling and the fireplace appear to be of early to mid 18<sup>th</sup> century date.

#### ***Bedroom 1 (Fig.5)***

**2.15** Bedroom 1 also overlooks Silver Street. There were no original features visible in this room.

#### ***Bedroom 2 (Fig.5)***

**2.16** Bedroom 2 has two later 19<sup>th</sup> century windows in the east wall overlooking the yard. Between the two windows is a large pillar extending approximately 1m into the room from which the sides bow out to meet the east wall.

**2.17** There is some 18<sup>th</sup> century panelling on the south wall, which is similar to that in the living room. The rear of the panelling has been exposed in the landing showing the back boards which are set horizontally and are also of pine.

#### ***Bedroom 3 (Fig.6)***

**2.18** Bedroom 3 lies at the rear of the building with a 12-light sash window in the north wall and access to the modern bathroom in the east elevation. A fireplace was until recently located in the east elevation, next to the bathroom door. The broken remains of the fire surround were recorded (Plate 2a). Although sharing to scallop motif, this fireplace is likely to be later than that in the living room.

#### ***Discussion***

**2.19** Although the building has been extended and considerably altered over the years, some original and well preserved features are still in situ.

**2.20** The timber framing and brick work, together with the panelling, and the window in Bedroom 3 are all indicative of an early 18<sup>th</sup> century date. Later 19<sup>th</sup> century reworking is

evident in the windows with larger panes and “horns” on the end of the vertical frames. The modern alterations have predominantly affected the interior of the building in order to update the living and shop areas.

## 3. Fieldwork

### *TOPOGRAPHY AND GEOLOGY*

**3.1** The site lies at c.32m AOD, on level ground with walled boundaries to the north and south.

**3.2** The underlying geology consists of strong brown (7.5YR 4/6) compacted sandy gravel overlain by brown (7.5YR 4/4) clay.

### *METHODOLOGY*

**3.3** All work was carried out in accordance with the approved *Project Design*, current health and safety legislation, and IFA standards.

**3.4** One trench was opened to the rear of no. 35. It was aligned north to south and measured 6.2m x 2m (Fig.2). This constituted 3.15% of the footprint of the proposed building. Its location was limited due to restrictions on access and the presence of modern services.

**3.5** The trench was opened using a tracked 360° mini-digger fitted with a 0.8m wide toothless bucket, under close archaeological supervision. Spoil from the machining was inspected for archaeological artefacts. The trench was to be machined to the first significant archaeological horizon.

**3.6** The trench was cleaned by hand, and all potential archaeological features and deposits were sampled to ascertain their nature, depth, date, and quality of preservation.

**3.7** All identified contexts were photographed and recorded using the appropriate pro-forma. Scaled plans and sections were drawn on drafting film.

### *RESULTS*

**3.8** The trench measured 2m x 6.2m and was between 1.05m and 1.58m deep. Originally it was intended to be 5m x 1.5m but because of the limited accessible area available for excavation within the footprint of the proposed building, it was extended to increase the likelihood of exposing any potential archaeology.

**3.9** The stratigraphy of the trench had been heavily affected by post medieval and modern disturbance. It consisted of three layers above the natural geology with an additional localised layer of redeposited natural between the cut for a water pipe and a pit containing rubble in-fill, contexts [112] and [106] respectively (Fig.7).

**3.10** The upper layer, which was covered by the existing surface of paving and brick, consisted of very dark grey (10YR 3/1) silty clay. It had a mixed compaction with frequent flint, concrete, charcoal and CBM inclusions. Beneath this was a friable, very dark greyish brown (10YR 3/2) silty clay layer also with frequent flint and CBM inclusions. Underlying that was a layer of firm, brown (7.5YR 4/4) clay with occasional flints. This overlay the natural geology. The layer of redeposited natural was a friable, dark greyish brown (10YR 4/2) silty clay with frequent flints.



**3.11** The trench contained five features two of which were cuts for the service pipes. The others were wall [103], and two pits [101] and [106].

**3.12** Pit [101] was sub-rectangular and cut the baulk of the trench on the southern and eastern sides. It measured at least 1.92m in length and was at least 1.90m wide. It was cut into the natural geology such that it was 1.25m deep. As the base of the pit had not been reached after the machining, it was augered to ascertain its actual depth.

**3.13** The wall [103] was orientated north to south extending from the southern baulk of the trench. It was approximately 0.90m high (13 courses), had a maximum length of 0.95m and was 2 courses deep. It was heavily damaged by root action and had slumped along its length at an angle of approximately 30° and was truncated. The bricks were red clay 0.24m x 0.11m x 0.06m (9.5 x 4.25 x 2.5 inches) in size, bonded with a lime mortar.

**3.14** Pit [106] was only visible in the west facing section of the trench so its size and shape in plan could not be determined. From the section it was measured to be 1.06m wide by 0.86m deep and it was 'U' shaped. The cut contained rubble infill much of which was brick though not of the same type as the wall [103].

**3.15** None of the features visible in the west facing section of the trench were observed in the east facing section, although this section had been reduced.

#### Recorded contexts

Context	Type	Description	Dimensions (m)
101	Cut	Sub-rectangular pit filled with CBM and containing wall (103) and fill (102).	Length: 1.92m+ Width: 1.90m+ Depth: 1.25m
102	Fill	Firm, yellowish brown (10YR 3/4), silty clay with frequent flint, CBM and roots. Fill of [101].	Length: 1.92m+ Width: 1.90m+ Depth: 1.25m
103	Wall	13 courses high, 2 courses deep, red brick. Brick size (0.24m x 0.11m x 0.06m). Heavily damaged by root action.	Length: 0.95m Height: 0.90m Width: c0.14m
104	Layer	Loose, very dark grey (10YR 3/1), silty clay with CBM and gravel.	0.30m thick
105	Layer	Mixed compaction, very dark grey (10YR 3/1), silty clay with CBM, flint, concrete and charcoal.	0.28m thick
106	Cut	Pit of indeterminate shape containing large amount of brick and building rubble. 'U' shaped.	Length: unknown Width: 1.06m Depth: 0.86m
107	Fill	Loose, brown (10YR 3/4), very silty clay with CBM. Rubble in-fill.	Length: unknown Width: 1.06m Depth: 0.86m
108	Layer	Firm, brown (7.5 YR 4/4), clay with occasional flints <0.02m. Brickearth.	0.54m thick
109	Layer	Friable, very dark greyish brown (10YR 3/2), silty clay with frequent flint and CBM.	0.43m thick
110	Layer	Friable, dark greyish brown (10YR 4/2), silty clay with frequent flints <0.04m. Redeposited natural.	0.30m thick
111	Cut	Linear cut for waste pipe.	Length: 2.14m+ Width: 0.98m Depth: 0.78m

Context	Type	Description	Dimensions (m)
112	Fill	Firm, dark yellowish brown (10YR 3/4), slightly silty clay with gravel. Contains frequent flints <0.02m. Fill of waste pipe cut [111]	Length: 2.14m+ Width: 0.98m Depth: 0.78m
113	Cut	Linear cut for water pipe.	Length: 2.14m+ Width: 0.66m Depth: 0.40m
114	Fill	Firm, very dark grey (10YR 3/1), silty clay with CBM, flint and gravel. Fill of water pipe cut [113]	Length: 2.14m+ Width: 0.66m Depth: 0.40m

### ***FINDS CONCORDANCE***

**3.16** Due the high incidence of brick, CBM and rubble only a sample of the artefacts present was taken. The spoil was also inspected for items likely to provide dating evidence.

Ctxt	Pottery		CBM		Clay pipe		Comments
	Wt.	No.	Wt.	No.	Wt.	No.	
102	220	1			10	1	
103			2175	1			Sample brick from wall [103]
U/S	15	1			10	1	
Total	235	2	2175	1	20	2	

### ***ARTEFACTS***

#### ***Pottery***

**3.17** A total of 2 pottery sherds, weighing 235g, were recovered from 1 unstratified and 1 stratified contexts during the excavation.

**3.18** A single sherd of ceramic bottle dating from the 19<sup>th</sup> century was recovered from context (102).

**3.19** A single small unstratified sherd of London White Ware dating from the 14<sup>th</sup> or 15<sup>th</sup> century was recovered from the spoil of Trench 1.

**3.20** A ceramic bottle recovered from context (102) represents 93% of the assemblage by weight. The bottle is unmarked and probably dates from the 19<sup>th</sup> century.

#### ***Recommendations***

**3.21** Given the small size of the pottery assemblage and its largely modern nature, no further work is proposed on this assemblage.

#### ***Ceramic Building Material***

**3.22** A total of 1 ceramic building material fragment, weighing 2175g, were collected from context [103]. This was a sample of the brick used to construct the wall in cut [101]. It is dated to around the 17<sup>th</sup> century.

*Recommendations*

**3.23** No further work is proposed on this fragment.

*Clay pipe*

**3.24** The bowl of a clay pipe, weighing 10g, was recovered from context [102] close to the base of the wall [103]. It has been dated to the mid-18<sup>th</sup> century.

**3.25** The pipe recovered from the unstratified context also dates to the mid-18<sup>th</sup> century.

*Recommendations*

**3.26** Given the small size and nature of this assemblage, no further work is proposed.

*ECOFACTS*

**3.27** No ecofacts were recovered during the excavation.

*DISCUSSION*

**3.28** The evaluation revealed two pits [101] and [106], a wall [103], and two modern service trenches.

**3.29** Pit [101] contained the remains of a wall the base of which was approximately 1.5 below ground level.

**3.30** Pit [106] contained a substantial quantity of CBM, stone and rubble. There was also the three or four courses of a wall orientated north-south. Pit [106] cut pit [101].

**3.31** The stratigraphy of the trench suggests there has been substantial disturbance of the ground. The content of layers [105] and [109] consisted largely of CBM indicative of made ground associated with building activity.

**3.32** Layer [110] appeared to be redeposited natural overlaying layers [109] and [108]. These layers are truncated by pit [106] to the south and the service trenches to the north.

**3.33** Whilst the stratigraphy of both the east and west facing sections of the trench were similar, none of the features observed in the west facing section were reflected in the east facing.

**3.34** The cartographic evidence shows that there has been a substantial reduction in the footprint size of the buildings on the plot (Figs.8&9). The principal reduction occurred some time between 1867 and 1886 with another smaller alteration post 1935.

## 4. Conclusions

**4.1** Although nos. 37 to 41 Silver Street are modern buildings, no. 35 appears to be the last building of 18<sup>th</sup> century origins to survive on the east side of Silver Street. The presence of original structural elements, panelling and fireplaces certainly make the building worthy of record if not retention. The building appears to have undergone substantial alterations both internally and externally particularly during the 20<sup>th</sup> century.

**4.2** A study of the historic Ordnance Survey plans covering the site, and the depth of the wall seen in pit [101], suggest that it could have formed part of a cellar at the eastern end of the original building. A sample brick taken from the wall is contemporary with the main building, dating to the 1700s. The remains of the wall seen in pit [106] may have formed part of the footings of another extension or lean-to immediately to the east of that.

**4.3** The disturbance associated with layers [110], [109] and [108] may have been the result of the demolition of a structure forming the north-east corner of the post-1913 building. The service trenches subsequently cut through these layers.

**4.4** Apart from the single unstratified sherd of pottery, there was no evidence of Medieval or earlier activity on the site.

**4.5** Although a survey of 1572 recorded the presence of four cottages and two houses on the east side of Silver Street in 1572 (Pam 1992: 47), no architectural or archaeological evidence pre-dating the 18<sup>th</sup> century was revealed during the present investigation.

### **CONFIDENCE RATING**

**4.6** In the course of the fieldwork, weather and ground conditions were generally acceptable for the identification of potential features and deposits, and for their investigation.

**4.7** There are no other circumstances which would lead to a confidence rating for the present evaluation which is less than High.

## 5. Sources Consulted

Baker, T.F.T.(ed). 1976 *History of the County of Middlesex* Victoria County History

Hillelson, D. 2004. *35-41 Silver Street, Enfield: project design* Heritage Network

Pam, D. 1992. *A Parish Near London: Before 1837* Enfield Preservation Society

Pam, D. 1992. *A History of Enfield Vol II: A Victorian Suburb 1837-1914* Enfield Preservation Society

Taylor, J. *Nails and Wood Screws*

<http://www.buildingconservation.com/articles/nails/nails.htm>

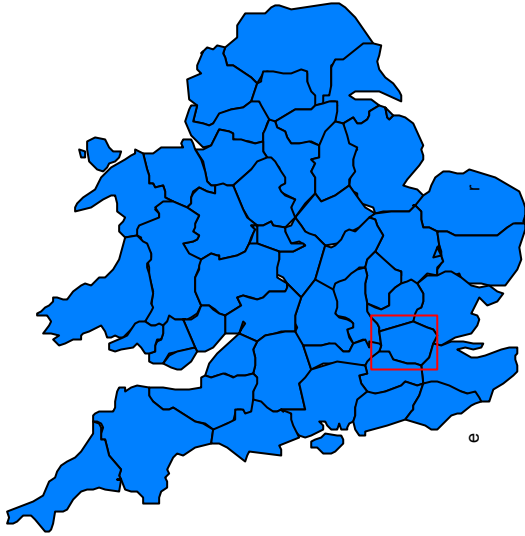
## 6. Illustrations

Figure 1 .....	Site location
Figure 2 .....	Site layout
Figure 3 .....	Plan of number 35
Figure 4 .....	Interior elevations of kitchen and dining room
Figure 5 ..	Interior elevations of living room, bedroom 1 and bedroom 2
Figure 6 .....	Interior elevations of bedroom 3
Figure 7 .....	Plan and section of Trench 1
Figure 8a .....	Ordnance Survey Plan (1867)
Figure 8b .....	Ordnance Survey Plan (1886)
Figure 9a .....	Ordnance Survey Plan (1913)
Figure 9b .....	Ordnance Survey Plan (1935)
Plate 1a.....	Living room panelling
Plate 1b.....	Living room fireplace
Plate 2a.....	Oyster shells set into living room fireplace surround
Plate 2b.....	Bedroom 3 fireplace

THE HERITAGE NETWORK LTD

35-41 Silver Street, Enfield

HN470

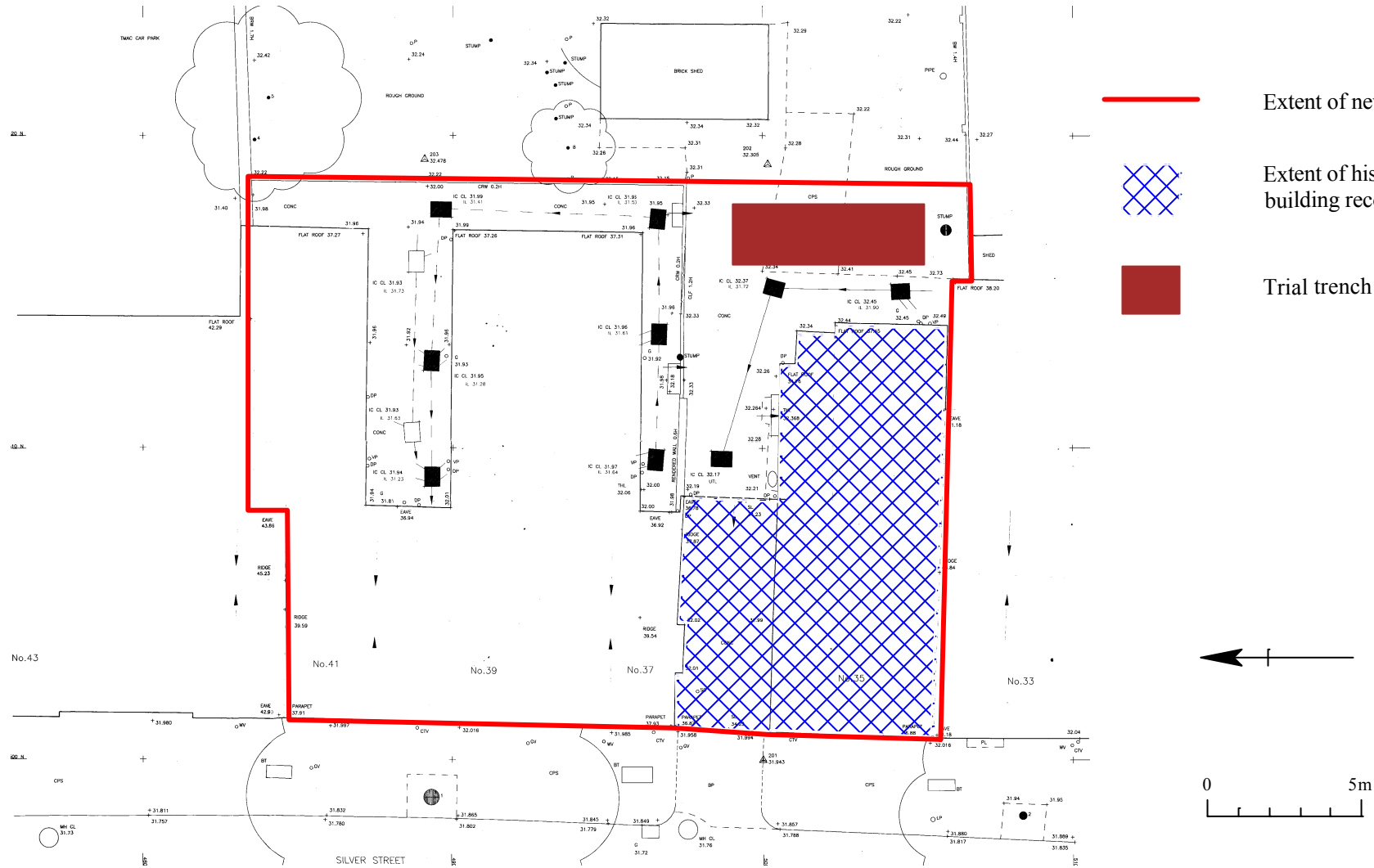





Site Location

Scale 1:5000

Reproduced from the Ordnance Survey with the permission of the controller of Her Majesty's Stationery Office, Licence no.AL100014861

Figure 1



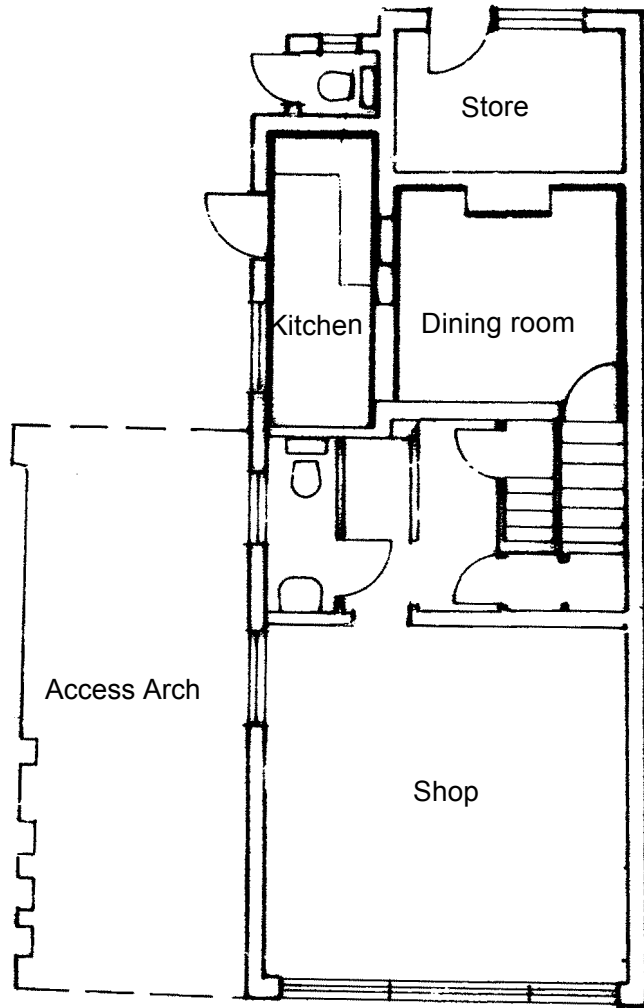
-  Extent of new building
-  Extent of historic building record
-  Trial trench

Site Layout

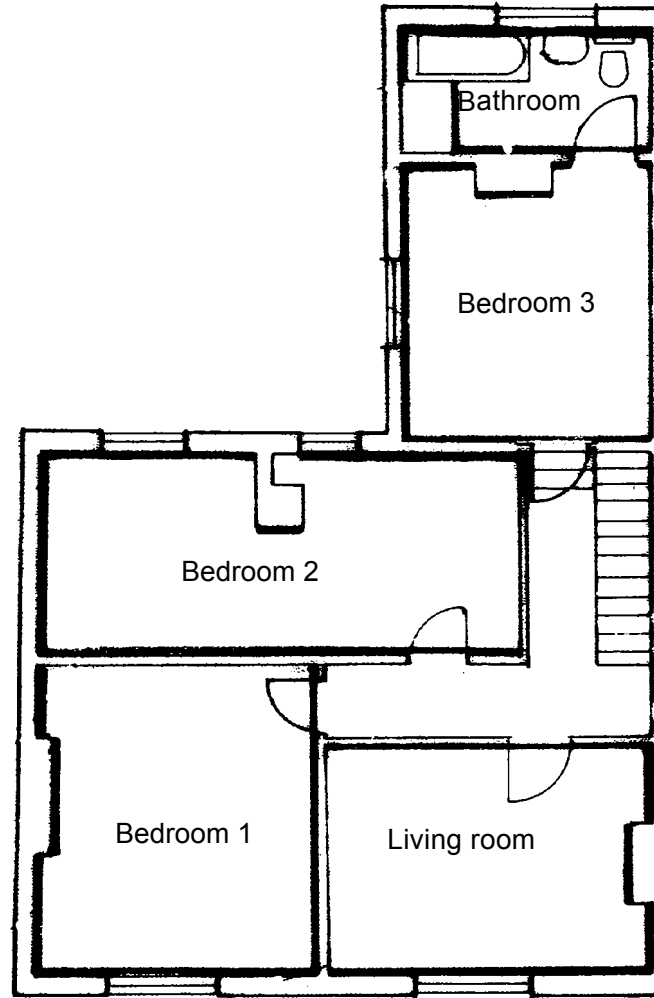
Scale 1:200

Figure 2

Ground floor



First floor



Plan of Number 35  
(Courtesy of Nicholas Holdings Co. Ltd)

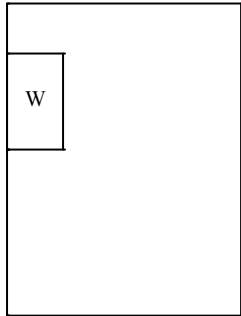
Scale 1:100

Figure 3

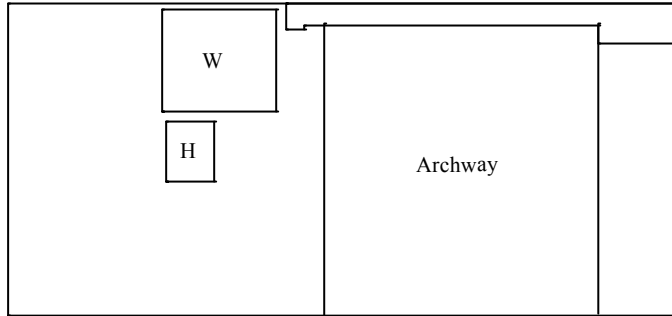


***Kitchen***

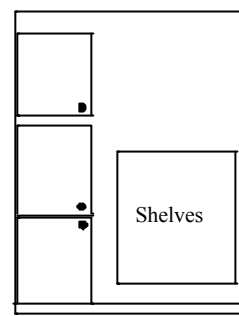
*East elevation*



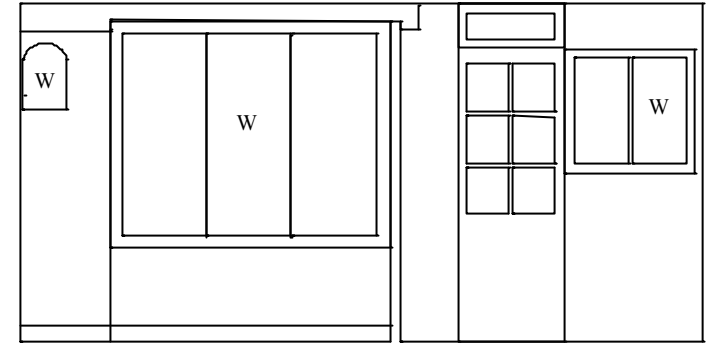
*South elevation*



*West elevation*

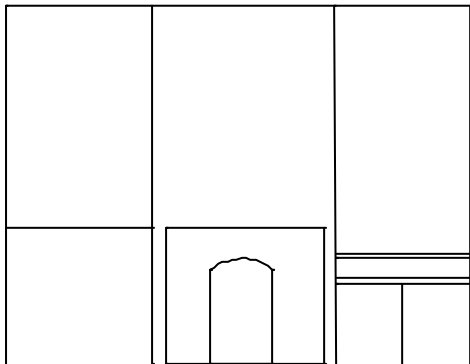


*North elevation*

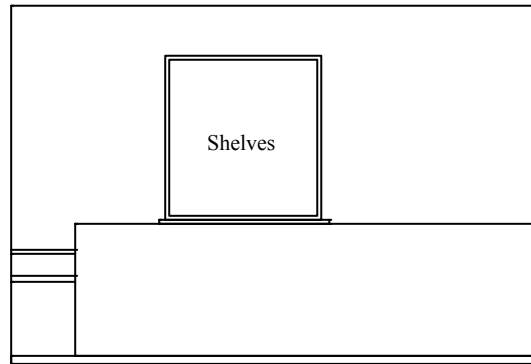


***Dining room***

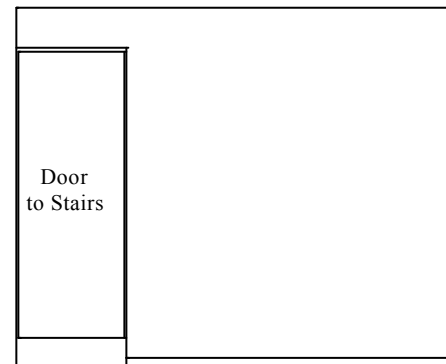
*East elevation*



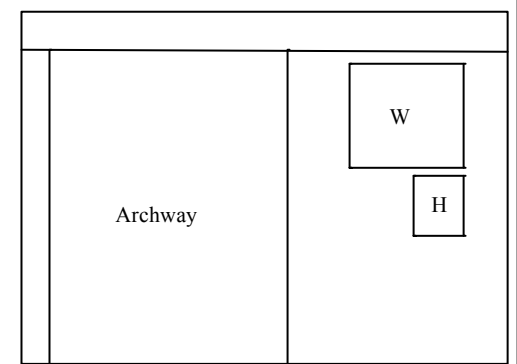
*South elevation*



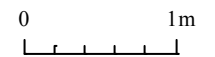
*West elevation*



*North elevation*



W Window  
H Hatch



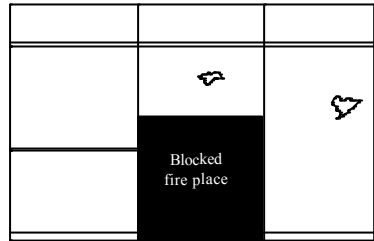
Interior elevations of kitchen and dining room

Scale 1:50

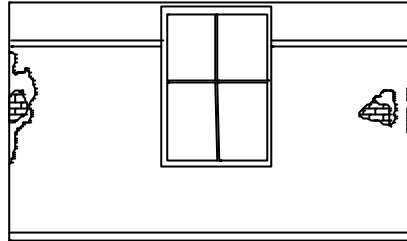
Figure 4

*Living room*

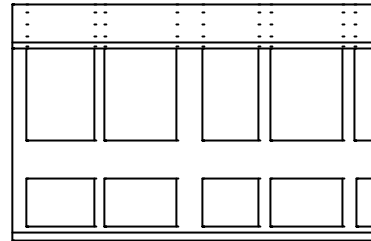
*South elevation*



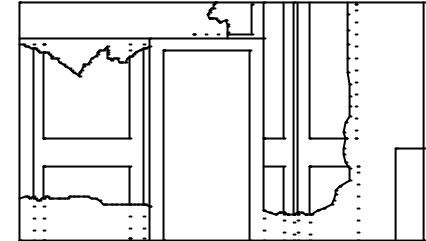
*West elevation*



*North elevation*

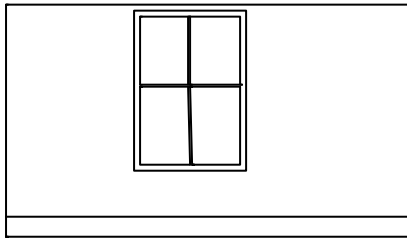


*East elevation*

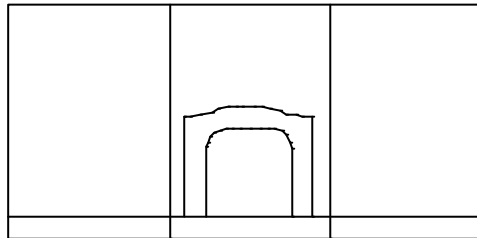


*Bedroom 1*

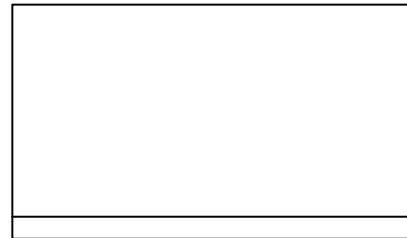
*West elevation*



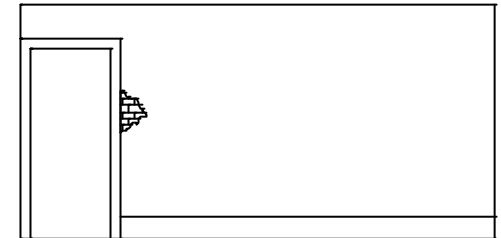
*North elevation*



*East elevation*



*South elevation*

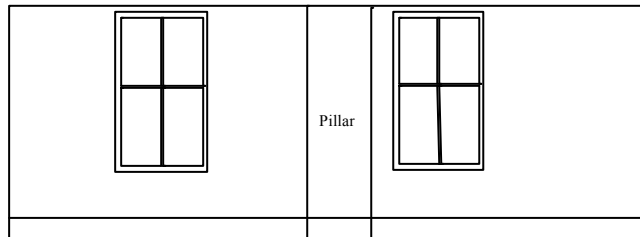


*Bedroom 2*

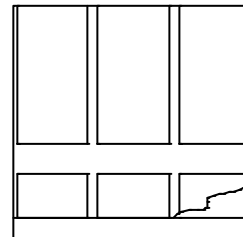
*North elevation*



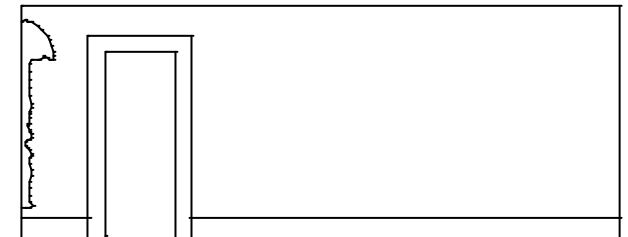
*East elevation*



*South elevation*

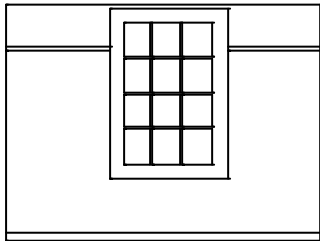


*West elevation*

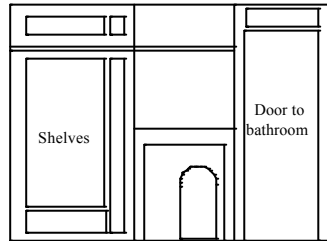


*Bedroom 3*

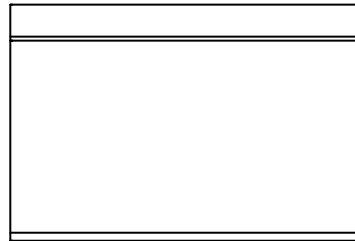
*North elevation*



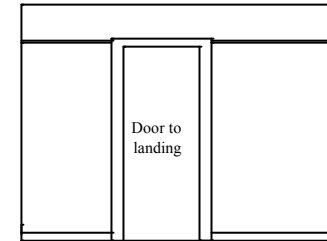
*East elevation*

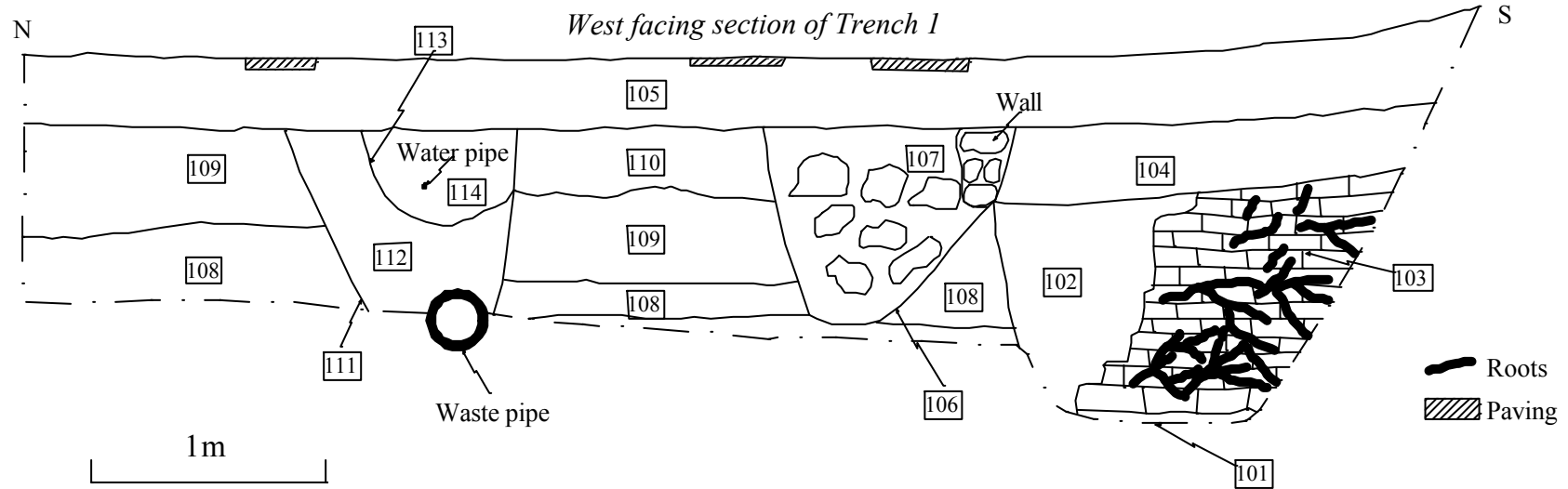
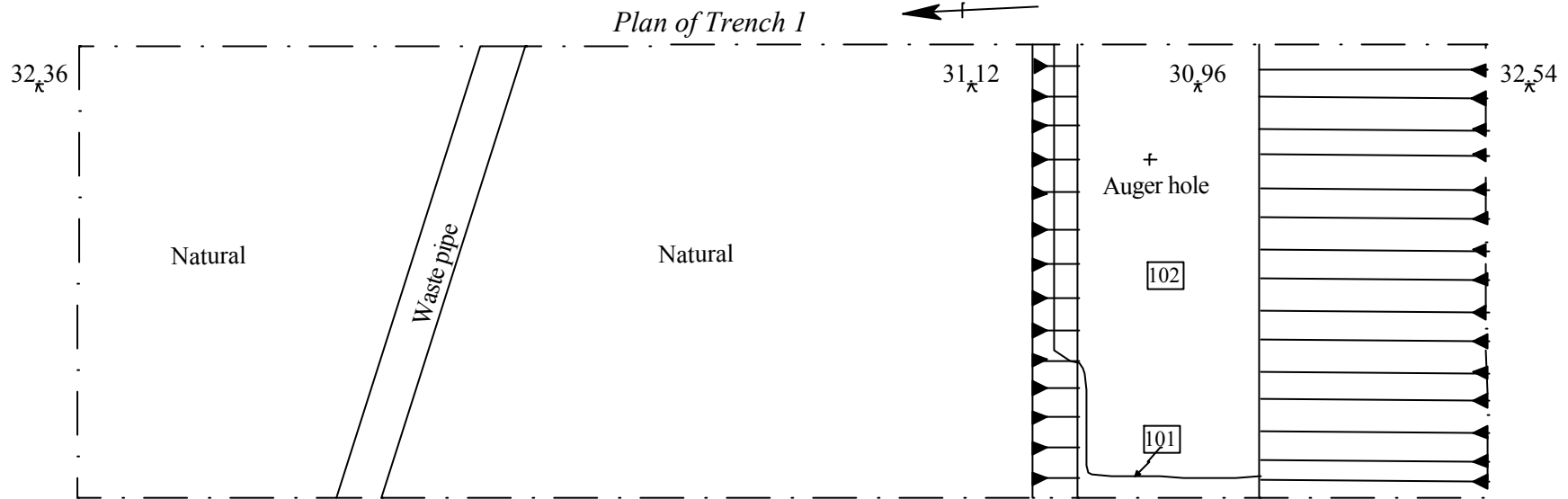


*South elevation*



*West elevation*





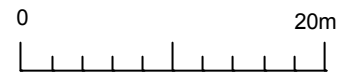
Plan and section of Trench 1

Scale 1:30

Figure 7



- Existing building
- - - Trench
- Wall seen in section

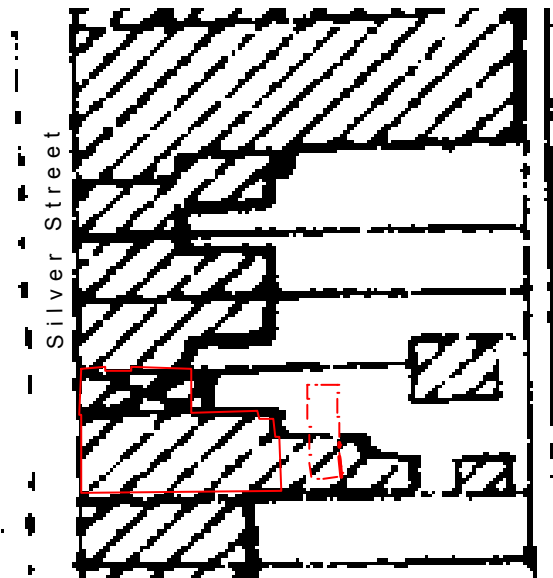


Ordnance Survey Plan (1867)

*(Reproduced from the Ordnance Survey with the permission of the controller of Her Majesty's Stationery Office, Licence no.AL100014861)*

Scale 1:500

Figure 8a



- Existing building
- - - Trench
- Wall seen in section

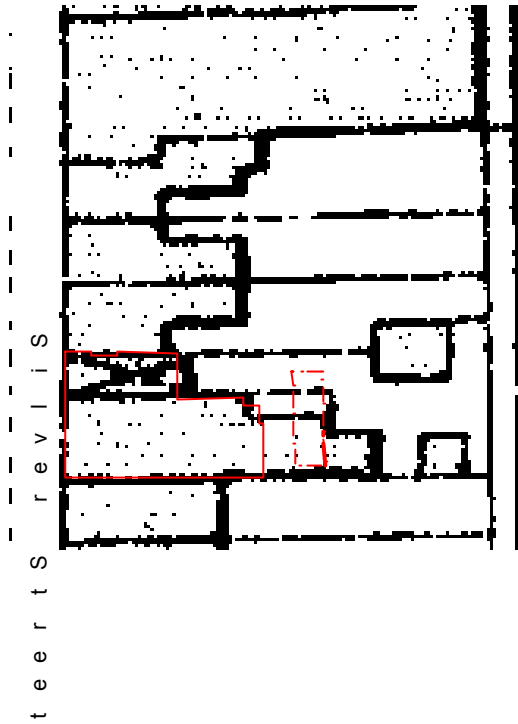


Ordnance Survey Plan (1886)

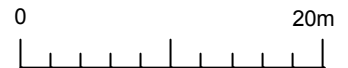
*(Reproduced from the Ordnance Survey with the permission of the controller of Her Majesty's Stationery Office, Licence no.AL100014861)*

Scale 1:500

Figure 8b



- Existing building
- Trench
- Wall seen in section



Ordnance Survey Plan (1913)

*(Reproduced from the Ordnance Survey with the permission of the controller of Her Majesty's Stationery Office, Licence no.AL100014861)*

Scale 1:500

Figure 9a



- Existing building
- Trench
- Wall seen in section



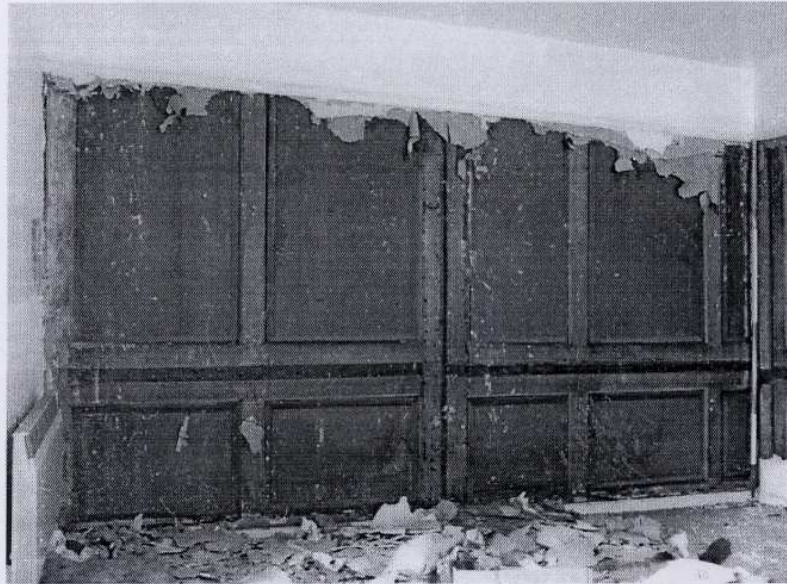
Wall seen in section

Ordnance Survey Plan (1935)

*(Reproduced from the Ordnance Survey with the permission of the controller of Her Majesty's Stationery Office, Licence no.AL100014861)*

Scale 1:500

Figure 9b



Living room panelling

Scale n/a

Plate 1a



Living room fireplace

Scale n/a

Plate 1b



Oyster shells set into living room fireplace surround

Scale n/a

Plate 1a



Bedroom 3 fireplace

Scale n/a

Plate 1b



## Appendix 1: Black and White Photographic Log

Roll No.	Photo No.	Description	Facing
1	1	West elevation	E
	2	West elevation	E
	3	East elevation	W
	4	East elevation	W
	5	Access arch: east end	W
	6	Access arch: east end	W
	7	Access arch: south wall	SW
	8	Access arch: north wall	NW
	9	Arch into kitchen	N
	10	Dining room: east elevation	E
	11	Dining room: south elevation	S
	12	Stairs	W
	13	Living room: north elevation	N
	14	Living room: east elevation	E
	15	Living room: south elevation	S
2	1	Living room: west elevation	W
	2	Bedroom 1: west elevation	W
	3	Bedroom 1: north elevation	N
	4	Landing: south elevation	S
	5	Bedroom 2: north elevation	N
	6	Bedroom 2: south elevation	S
	7	Landing: back panelling of Bedroom 2	S
	8	Landing: back panelling of Bedroom 2	S
	9	Landing: looking east	E
	10	Bedroom 3: east elevation	E
	11	Bedroom 3: fireplace	
	12	Bedroom 3: north west window	NW
	13	Landing: looking west	W
	14	Street frontage	NE
	15	Rear of properties	NW



1/1

West elevation



1/2

West elevation



1/3

East elevation



1/4

East elevation



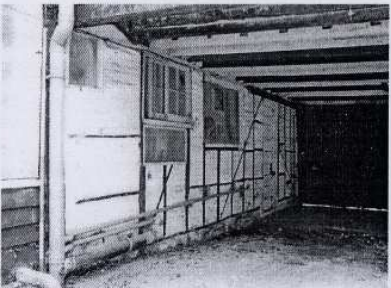
1/5

Access arch: east end



1/6

Access arch: east end



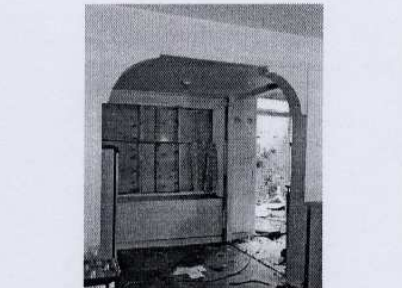
1/7

Access arch: south wall



1/8

Access arch: north wall



1/9

Arch into kitchen



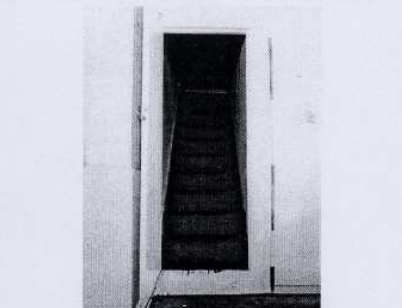
1/10

Dining room: east elevation



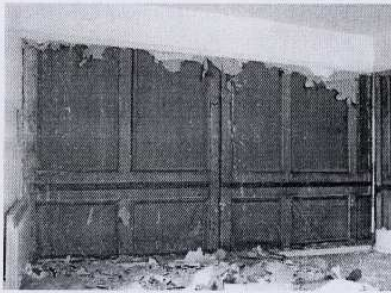
1/11

Dining room: south elevation



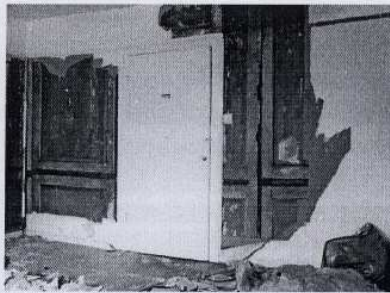
1/12

Stairs



1/13

Living room: north elevation



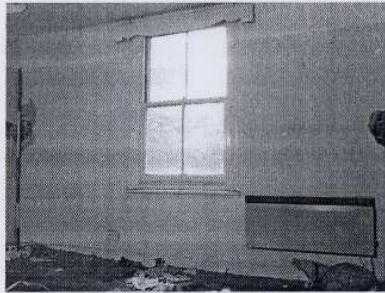
1/14

Living room: east elevation



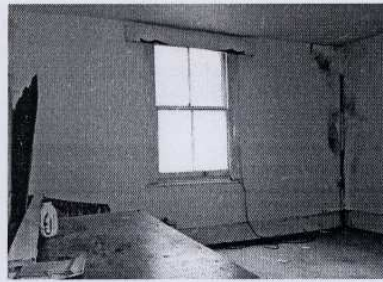
1/15

Living room: south elevation



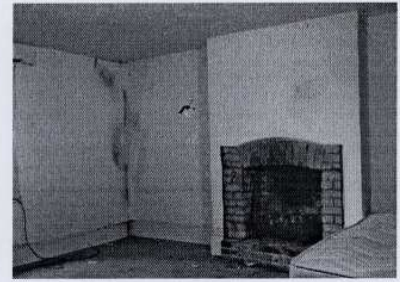
2/1

Living room: west elevation



2/2

Bedroom 1: west elevation



2/3

Bedroom 1: north elevation



2/4

Landing: south elevation



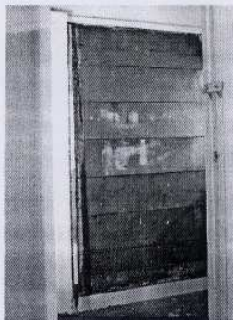
2/5

Bedroom 2: north elevation



2/6

Bedroom 2: south elevation



2/7

Landing: back panelling of bedroom 2



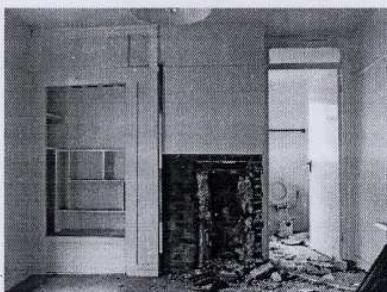
2/8

Landing: back panelling of bedroom 2



2/9

Landing: looking east



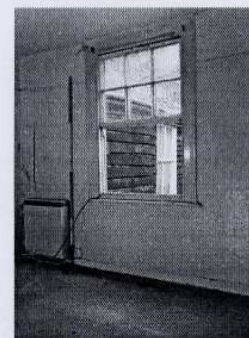
2/10

Bedroom 3: east elevation



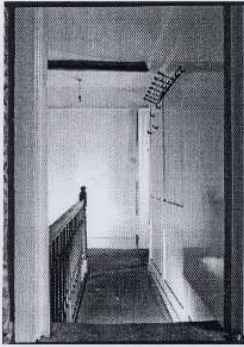
2/11

Bedroom 3: fireplace

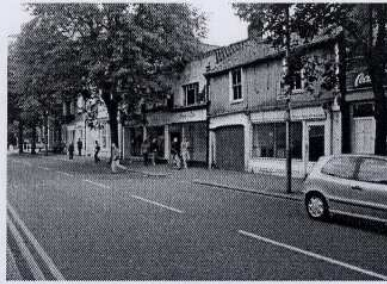


2/12

Bedroom 3: north west window



1/13



2/14



2/15

Landing: looking west

Street frontage

Rear of properties

## Appendix 2: Digital Colour Photographic Log

Sheet	Photo No.	Description	Facing
A	1	Shop: west elevation	WNE
	2	Shop: east elevation	SE
	3	Shop: north east corner	NE
	4	Kitchen: west elevation	W
	5	Kitchen: north east corner	NE
	6	Kitchen: north elevation	N
	7	Dining room: window & hatch	N
	8	Living room: south elevation	S
	9	Living room: exposed brickwork	SW
	10	Living room: fireplace	S
	11	Living room: fireplace	S
	12	Living room: north elevation	N
B	1	Living room: oyster shells set into fire surround	S
	2	Bedroom 1: fireplace	N
	3	Bedroom 2: door moulding	E
	4	Bedroom 2: pillar & roof detail	N
	5	Bedroom 2: pillar	W
	6	Bedroom 2: south elevation	S
	7	Bedroom 2: panelling detail	E
	8	Bedroom 3: fireplace	
	9	Bedroom 3: east elevation	E
	10	Access arch: SE corner	SE
	11	Rear elevation: south west corner	SW
	12	Access arch: south elevation	SW
C	1	Access arch: south elevation	SW
	2	Access arch: south elevation detail	S
	3	Access arch: chimney relieving arch	NW



1

Shop: west elevation



2

Shop: east elevation



3

Shop: north east corner



4

Kitchen: west elevation



5

Kitchen: north east corner



6

Kitchen: north elevation



7

Dining room: window & hatch



8

Living room: south elevation



9

Living room: exposed brickwork



10

Living room: fireplace



11

Living room: fireplace



12

Living room: north elevation



1

Living room: oyster shells set into fireplace surround



2

Bedroom 1: fireplace



3

Bedroom 2: door moulding



4

Bedroom 2: pillar & roof detail



5

Bedroom 2: pillar



6

Bedroom 2: south elevation



7

Bedroom 2: panneling detail



8

Bedroom 3: fireplace



9

Bedroom 3: east elevation



10

Bedroom 2: panneling detail



11

Rear elevation: south west corner



12

Access arch: south elevation





1



2



3

Access arch: south elevation

Access arch: south elevation detail

Access arch: north elevation detail

Site Name:	35-41 Siva St. Enfield	HN ref:	470
		Site Code:	SVS 04

Recorder(s):	DJH + KS	Arrive time:	1000	Return travel:	
Date:	09.07.04	Depart time:	245	Total hours:	

Reported to:	—	Position:	—
Purpose of visit:	Record building		

Photograph film no	
Observations:	
<p>The photographs using the Mamiya medium format camera were completed. Some digital photos were taken of salient features.</p>	
<p>The elevation drawing measurements were checked. Samples of wood were taken from the weatherboarding, the panelling in the living room and the panelling in the landing. A sample nail from the weatherboarding was also retained.</p>	
<p>The fireplace in the living room was revealed. It was shell shaped within a rectangular non frame. Gilted shell had been set into the wall to the top left corner of the fireplace.</p>	
<p>The external wall behind the sample of weatherboarding that was removed was stud + brick nogging. There was no evidence of paint or render on the bricks which may indicate that the weatherboarding was original. The panelling appears to be quite old, with wavy edges visible on some of them.</p>	
<p>The panelling in the living room had a number of layers of paint on them and</p>	
Weather:	

Sheet	1	of	2
Additional records:			
Text sheet(s)			✓
Sketch sheet(s)			
Context form(s)			
A4 Scale dwng(s)			
A3 Scale dwng(s)			
Photographs			✓

Site Name:	35-41 Silva St Enfield	HN ref:	470
		Site Code:	

Observations:

Evidence for a chain rail.

Bedroom 2 had a very square pillar between the two windows. The walls at the top of the pillar bowed out to meet the external wall. A diagonal beam was noted in the ceiling of the access, probably below where the wall bowed.

All the mortar inspected was lime based. The bricks, studwork, windows (close to the front of the opening) and panelling suggest an early 18th date for the building.

Recorder(s):	DSH + RJ	Date:	09-07-04	Sheet	2	of	2
--------------	----------	-------	----------	-------	---	----	---

Site Name:	35-41 Silverstreet, Enfield	HN ref:	470
		Site Code:	SVS04

Recorder(s):	Dak	Arrive time:	11.30	Return travel:	2.15
Date:	8/7/04	Depart time:	4.15	Total hours:	7

Reported to:		Position:	
Purpose of visit:	Photograph site		

Photograph film no	
Observations:	<p>Photographed outside of the building and some of the inside (down stairs main room, stair case, landing, panelled room and bedroom).</p> <p>Due to the amount of mess on site, some time had to spent clearing the rooms to get them into a state where it was worth photographing them.</p> <p>Access for a digger was also investigated</p>

	Sheet	(	of	(
	Additional records:			
	Text sheet(s)			
	Sketch sheet(s)			
	Context form(s)			
	A4 Scale dwng(s)			
	A3 Scale dwng(s)			
Weather:	Shawery	Photographs		<input checked="" type="checkbox"/>

Site Name:	Silverstreet Gridd	HN ref:	HN470
		Site Code:	SUS 04

Recorder(s):	DHC, CT	Arrive time:	9.00	Return travel:	1hrs
Date:	13/7/04	Depart time:	4.00	Total hours:	9hrs

Reported to:		Position:	
Purpose of visit:	Open up trench.		

Photograph film no	
--------------------	--

Observations: Opened up 5m trench. Large pit & small later cut pit exposed. Large pit contained a wall 13 courses deep, 2 wide. Fill contained building rubble, abm etc. The smaller cut had mainly brick/rubble in. Both features were in the west facing section of the trench but not reflected in the east facing section. The wall was heavily damaged by roots. West facing section was cleared and some of the trench floor was also tidied up.

	Sheet	(	of	(
	Additional records:			
	Text sheet(s)			
	Sketch sheet(s)			
	Context form(s)			
	A4 Scale dwng(s)			
	A3 Scale dwng(s)			
Weather:	Sunny	Photographs		<input checked="" type="checkbox"/>

Site Name:	35-41 SILVER STREET, ENFIELD	HN ref:	470
		Site Code:	SVS 04.

Recorder(s):	GIS Dgk	Arrive time:	10.00	Return travel:	3 hrs
Date:	14.7.04	Depart time:	14.45	Total hours:	

Reported to:	—	Position:	—
Purpose of visit:	Record Evaluation trench.		

Photograph film no	
--------------------	--

Observations:	On site :- GIS, Dgk
---------------	---------------------

Cleaned & photographed trench, completed trench sheet.

Drew plan & section at 1:20.

Augured pit, max depth 0.27m below bottom of trench.

barrier topped off trench.

Left site.

Spoke to client at lunch time, informed him that we would finish recording today.

	Sheet		of	
	Additional records:			
	Text sheet(s)			
	Sketch sheet(s)			
	Context form(s)			
	A4 Scale dwng(s)			
	A3 Scale dwng(s)			
Weather:	Rain AM, Overcast PM	Photographs		

Site Name:	35-41 Silver St, Enfield	HN ref:	470
		Site Code:	SUS 04

Recorder(s):	D94, CT	Arrive time:	11.00	Return travel:	3 1/2*
Date:	22/7/04	Depart time:	3.30	Total hours:	8

Reported to:		Position:	
Purpose of visit:	Back fill trench		

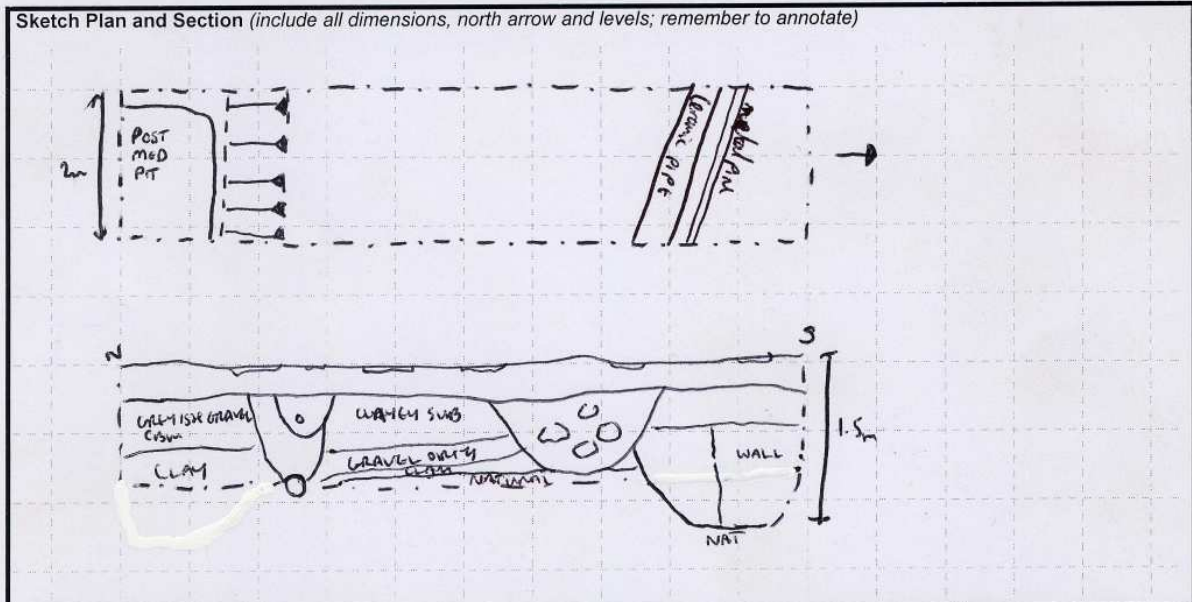
Photograph film no	
--------------------	--

Observations: Back filled trench by hand. Some additional material was added to speed the process. Trench was taped off with boundary tape & road pins. Entrance/exit to site was secured with trolis & road pins. Previously erected trolis appeared to have kicked in & barrier tape broken.

	Sheet	1	of	1
	Additional records:			
	Text sheet(s)			
	Sketch sheet(s)			
	Context form(s)			
	A4 Scale dwng(s)			
	A3 Scale dwng(s)			
Weather:	Sunny	Photographs		

SITE CODE <b>HN470</b>	Site Name <b>NICON HOUSE, ENFIELD</b>	Sub-division <b>Tr 1</b>	Orientation <b>N-S</b>	TRENCH No <b>1</b>
	Length <b>6.2m</b>	Width <b>2m</b>	Depth <b>1.5m max</b>	
	Machine Type <b>360° mini digger</b>	Bucket Size		

Topsoil/ Overburden							
Colour <b>10YR 3/1</b> <b>VERY DARK GREY</b>	Composition <b>MIXED SILTY CLAY</b> <b>CLAY, FLINT, CONCRETE, CHARCOAL, GRAVEL ETC</b>					Depth <b>0.3m</b>	
Subsoil							
Colour <b>10YR 3/2 v DRAB</b> <b>ULTRA BROWN</b>	Composition <b>SILTY CLAY WITH FLINTS CBM</b>					Depth <b>0.5m max</b>	
Natural <b>7.5YR 4/6 STRONG BROWN</b>							
Colour <del>7.5YR 4/6 STRONG BROWN</del> <del>7.5YR 4/6 STRONG BROWN</del>	Composition <b>COMPACTED SANDY GRAVEL</b>					Depth <b>0.1m +</b>	
Observations (circle)	<input checked="" type="checkbox"/> Archaeology	<input type="checkbox"/> Root activity	<input type="checkbox"/> Structure	<input type="checkbox"/> Contamination	<input type="checkbox"/> Unstable	<input type="checkbox"/> Other:	.....
	<input type="checkbox"/> Bur'd horizon	<input type="checkbox"/> Burrows	<input type="checkbox"/> Services	<input type="checkbox"/> Flooding	<input type="checkbox"/> Blank		.....



Discussion and interpretation **mostly blank trench, contains two services pipes & a post medieval pit which was augered to a depth of 0.27m below base of trench sondage.**

Contexts			
Finds			
Plan no.	Photo (b/w) <input checked="" type="checkbox"/>	Signature <b>CS</b>	
Section no.	Photo (colour) <input checked="" type="checkbox"/>	Date <b>14/7/04</b>	
Levelled <input checked="" type="checkbox"/>	Located <input checked="" type="checkbox"/>	Samples <b>—</b>	Checked
Weather conditions <b>Rainy AM</b>			Cont.





SITE CODE HN470	Sub-division	Co-ordinate	Context Type cut	CONTEXT No 101
Fill/Layer	Description 1 sub rectangular 2 71.9m x 71.92m x 1.58m Deep 3 steep - sheer 4 n/a 5 unknown			Cut
1. Matrix colour 2. Matrix composition 3. Matrix compaction 4. Inclusions (frequency & size) 5. Dimensions 6. Other comments				1. Shape in plan 2. Dimensions/depth 3. Sides 4. Base 5. Orientation 6. Other comments
Structure				Group
1. Material 2. Bonding 3. Dimensions 4. Orientation	* +0.27m augered depth. (1.25m)			1. Type 2. Contexts

Stratigraphic Relationships	Cut by 106	Cuts 108, nat	Cut contains 102, 103
	Below	Above	Part of Group
	Butted by	Butts	
	Fill of	Same as	

Discussion and interpretation (large pit filled with cbrn contain wall (103))

Checked interpretation \_\_\_\_\_ Provisional date \_\_\_\_\_

Finds (circle): None Pottery Metal Glass Tile Brick A.Bone Shell Burnt mats. Other: pipe

Registered Finds

Find No	Type	Coords & level:
Find No	Type	Coords & level:
Find No	Type	Coords & level:

Samples (circle): Mollusc Flotation Wet-sieve Dry sieve C14 Other: \_\_\_\_\_

Sample No. \_\_\_\_\_  
Buckets/Litres \_\_\_\_\_

Reason for sample \_\_\_\_\_

Plan no. 1	Photo (b/w) <input checked="" type="checkbox"/>	Signature DAK
Section no. 2	Photo (colour) <input checked="" type="checkbox"/>	Date 15/7/04
Weather conditions wet an, sun PM	Risk of contamination	Checked
Excavation methods mini digger		Cont.

SITE CODE HN470	Sub-division	Co-ordinate	Context Type FILL	CONTEXT No 102
	Description			
Fill/Layer	1 10YR 3/4 Yellowish brown			Cut
1. Matrix colour	2 <del>10YR</del> silty clay			1. Shape in plan
2. Matrix composition	3 firm			2. Dimensions/depth
3. Matrix compaction	4 flint, CBM etc			3. Sides
4. Inclusions (frequency & size)	5 >1.9m x >1.92m x >0.98m Deep			4. Base
5. Dimensions				5. Orientation
6. Other comments				6. Other comments
Structure				Group
1. Material	+0.27m augered (1.25m)			1. Type
2. Bonding				2. Contexts
3. Dimensions				
4. Orientation				

Stratigraphic Relationships	Cut by	Cuts	Cut contains
	Below 104	Above nat	
	Butted by	Butts	Part of Group
	Fill of 101	Same as	

Discussion and interpretation fill of 101

Checked interpretation \_\_\_\_\_ Provisional date \_\_\_\_\_

Finds (circle): None Pottery Metal Glass Tile Brick A.Bone Shell Burnt mats. Other: clay pipe

Registered Finds

Find No	Type	Coords & level:
Find No	Type	Coords & level:
Find No	Type	Coords & level:

Samples (circle): Mollusc Flotation Wet-sieve Dry sieve C14 Other: \_\_\_\_\_

Sample No. \_\_\_\_\_

Buckets/Litres \_\_\_\_\_

Reason for sample \_\_\_\_\_

Plan no. ( )	Photo (b/w) <input checked="" type="checkbox"/>	Signature <u>DGK</u>
Section no. 2	Photo (colour) <input checked="" type="checkbox"/>	Date 15/7/04
Weather conditions wet am, sun pm	Risk of contamination	Checked
Excavation methods mini digger		Cont.

SITE CODE HN470	Sub-division	Co-ordinate	Context Type wall	CONTEXT No 103
Fill/Layer	Description			Cut
1. Matrix colour 2. Matrix composition 3. Matrix compaction 4. Inclusions (frequency & size) 5. Dimensions 6. Other comments	1 Brick 2 Lime mortar 3 c 0.95m W x 0.9m H. 4 N-S			1. Shape in plan 2. Dimensions/depth 3. Sides 4. Base 5. Orientation 6. Other comments
Structure				Group
1. Material 2. Bonding 3. Dimensions 4. Orientation				1. Type 2. Contexts

Stratigraphic Relationships	Cut by	Cuts	Cut contains
	Below	Above	
	Butted by	Butts	Part of Group
	Fill of	Same as	

Discussion and interpretation collapsed wall, 2 courses wide by 13 high. Red brick (0.24m L x 0.11m W x 0.06m D)

Checked interpretation	Provisional date
------------------------	------------------

Finds (circle):  
 None    Pottery    Metal    Glass    Tile    Brick    A.Bone    Shell    Burnt mats.    Other: .....

Registered Finds		
Find No	Type	Coords & level:
Find No	Type	Coords & level:
Find No	Type	Coords & level:

Samples (circle): Mollusc    Flotation    Wet-sieve    Dry sieve    C14    Other: .....	Sample No.
Reason for sample	Buckets/Litres

Plan no.	Photo (b/w) =	Signature D&K
Section no. 1	Photo (colour) =	Date 15/7/04
Weather conditions wet am, sun pm	Risk of contamination	Checked
Excavation methods mini digger & trowel		Cont.

SITE CODE HN470	Sub-division	Co-ordinate	Context Type Fill/Layer	CONTEXT No 104
Description				
Fill/Layer	1 10YR 3/1 very dark grey			Cut
1. Matrix colour 2. Matrix composition 3. Matrix compaction 4. Inclusions (frequency & size) 5. Dimensions 6. Other comments	2 very loose silty clay			1. Shape in plan 2. Dimensions/depth 3. Sides 4. Base 5. Orientation 6. Other comments
	3 v. loose			
	4 CBM, gravel etc			
	5 >1.78m x >1.9m x 0.3m deep			
Structure				Group
1. Material 2. Bonding 3. Dimensions 4. Orientation				1. Type 2. Contexts

Stratigraphic Relationships	Cut by	Cuts	Cut contains
	Below 105	Above 102	
	Butted by	Butts	Part of Group
	Fill of	Same as	

Discussion and interpretation *Build-up layer/dump containing CBM etc.*

Checked interpretation \_\_\_\_\_ Provisional date \_\_\_\_\_

Finds (circle):  
 None    Pottery    Metal    Glass    Tile    Brick    A.Bone    Shell    Burnt mats.    Other: \_\_\_\_\_

Registered Finds

Find No	Type	Coords & level:
Find No	Type	Coords & level:
Find No	Type	Coords & level:

Samples (circle):  
 Mollusc    Flotation    Wet-sieve    Dry sieve    C14    Other: \_\_\_\_\_

Sample No. \_\_\_\_\_  
 Buckets/Litres \_\_\_\_\_

Reason for sample \_\_\_\_\_

Plan no.	Photo (b/w)	Signature <i>DGK</i>
Section no. <i>2</i>	Photo (colour)	Date <i>15/7/04</i>
Weather conditions <i>wet con, sun pm</i>	Risk of contamination	Checked
Excavation methods <i>mini digger &amp; trowel</i>		Cont.

SITE CODE <b>HN470</b>	Sub-division	Co-ordinate	Context Type <b>FILL LAYER</b>	CONTEXT No <b>105</b>
	Description			
Fill/Layer	<b>1 10xR 3/1 Very dark grey</b>			Cut
1. Matrix colour	<b>2 silty clay</b>			1. Shape in plan
2. Matrix composition	<b>3 mixed</b>			2. Dimensions/depth
3. Matrix compaction	<b>4 c.B.M, plant, concrete, charcoal</b>			3. Sides
4. Inclusions (frequency & size)	<b>5 &gt;6.2m x 7.2m x c0.28m deep</b>			4. Base
5. Dimensions				5. Orientation
6. Other comments				6. Other comments
Structure				Group
1. Material				1. Type
2. Bonding				2. Contexts
3. Dimensions				
4. Orientation				

Stratigraphic Relationships	Cut by	Cuts	Cut contains
	Below	Above <b>104, 107, 110</b>	
	Butted by	<del>Butt</del> <b>114, 112, 109</b>	Part of Group
	Fill of	Same as	

Discussion and interpretation **Top soil**

---



---



---



---



---



---

Checked interpretation	Provisional date
------------------------	------------------

Finds (circle):

None Pottery Metal Glass Tile Brick A.Bone Shell Burnt mats. Other: .....

Registered Finds

Find No	Type	Coords & level:
Find No	Type	Coords & level:
Find No	Type	Coords & level:

Samples (circle):

Mollusc Flotation Wet-sieve Dry sieve C14 Other: .....

Sample No. \_\_\_\_\_

Buckets/Litres \_\_\_\_\_

Reason for sample \_\_\_\_\_

Plan no.	Photo (b/w)	Signature <b>DGL</b>
Section no. <b>2</b>	Photo (colour)	Date <b>15/7/04</b>
Weather conditions <b>wet am, sun pm</b>	Risk of contamination	Checked
Excavation methods <b>mini digger &amp; trowel</b>		Cont.

SITE CODE <b>HN470</b>	Sub-division	Co-ordinate	Context Type <b>CUT</b>	CONTEXT No <b>106</b>
Description				
Fill/Layer	1 unknown			Cut
1. Matrix colour	2 1.06m W x 0.86m d x unknown			1. Shape in plan
2. Matrix composition	3 approx 45-80°			2. Dimensions/depth
3. Matrix compaction	4 flat			3. Sides
4. Inclusions (frequency & size)	5 unknown			4. Base
5. Dimensions				5. Orientation
6. Other comments				6. Other comments
Structure				Group
1. Material				1. Type
2. Bonding				2. Contexts
3. Dimensions				
4. Orientation				

Stratigraphic Relationships	Cut by	Cuts <b>108, 102, 109</b>	Cut contains
	Below	Above	<b>007</b>
	Butted by	Butts	Part of Group
	Fill of	Same as	

Discussion and interpretation **Pit containing large amount of brick and builders rubble.**

Checked interpretation \_\_\_\_\_ Provisional date \_\_\_\_\_

Finds (circle):  
 None    Pottery    Metal    Glass    Tile    Brick    A.Bone    Shell    Burnt mats.    Other: \_\_\_\_\_

Registered Finds

Find No	Type	Coords & level:
Find No	Type	Coords & level:
Find No	Type	Coords & level:

Samples (circle):  
 Mollusc    Flotation    Wet-sieve    Dry sieve    C14    Other: \_\_\_\_\_

Sample No. \_\_\_\_\_  
 Buckets/Litres \_\_\_\_\_

Reason for sample \_\_\_\_\_

Plan no.	Photo (b/w)	Signature <b>DKK</b>
Section no. <b>2</b>	Photo (colour)	Date <b>15/7/04</b>
Weather conditions <b>wet am, sun pm</b>	Risk of contamination	Checked
Excavation methods <b>min. a cage &amp; travel</b>		Cont.

SITE CODE MN470	Sub-division	Co-ordinate	Context Type Fill	CONTEXT No 107
Description				
Fill/Layer	1 10YR 4/3 Brown			Cut
1. Matrix colour 2. Matrix composition 3. Matrix compaction 4. Inclusions (frequency & size) 5. Dimensions 6. Other comments	2 Very silty clay			1. Shape in plan 2. Dimensions/depth 3. Sides 4. Base 5. Orientation 6. Other comments
	3 loose			
	4 CBM, rubble, brick			
	5 1.03m x 0.86m d x unknown			
Structure				Group
1. Material 2. Bonding 3. Dimensions 4. Orientation				1. Type 2. Contexts

Stratigraphic Relationships	Cut by	Cuts	Cut contains
	Below 105	Above nat	
	Butted by	Butts	Part of Group
	Fill of 106	Same as	

Discussion and interpretation Rubble in fill

Checked interpretation	Provisional date
------------------------	------------------

Finds (circle):  
 None    Pottery    Metal    Glass    Tile    Brick    A.Bone    Shell    Burnt mats.    Other: .....

Registered Finds

Find No	Type	Coords & level:
Find No	Type	Coords & level:
Find No	Type	Coords & level:

Samples (circle):  
 Mollusc    Flotation    Wet-sieve    Dry sieve    C14    Other: .....

Sample No.
Buckets/Litres

Reason for sample

Plan no.	Photo (b/w)	Signature DGL
Section no. 2	Photo (colour)	Date 15/7/04
Weather conditions wet am, sun pm	Risk of contamination	Checked
Excavation methods mini digger & trowel		Cont.



SITE CODE <i>HN470</i>	Sub-division	Co-ordinate	Context Type <i>layer</i>	CONTEXT No <i>108</i>
	Description			
Fill/Layer	<i>1 2.5x2 4/4 brown</i>			Cut
1. Matrix colour 2. Matrix composition 3. Matrix compaction 4. Inclusions (frequency & size) 5. Dimensions 6. Other comments	<i>2 clay</i>			1. Shape in plan 2. Dimensions/depth 3. Sides 4. Base 5. Orientation 6. Other comments
	<i>3 flint</i>			
	<i>4 occ. flints &lt; 0.02m</i>			
	<i>5 &gt; 4.16m x 0.5um d x unknown</i>			
Structure				Group
1. Material 2. Bonding 3. Dimensions 4. Orientation				1. Type 2. Contexts

Stratigraphic Relationships	Cut by	Cuts	Cut contains
	Below <i>109</i>	Above <i>not gravel</i>	
	Butted by	Butts	Part of Group
	Fill of	Same as	

Discussion and interpretation *clay layer, brick earth.*

---



---



---



---



---

Checked interpretation \_\_\_\_\_ Provisional date \_\_\_\_\_

Finds (circle):  
 None    Pottery    Metal    Glass    Tile    Brick    A.Bone    Shell    Burnt mats.    Other: \_\_\_\_\_

Registered Finds

Find No	Type	Coords & level:
Find No	Type	Coords & level:
Find No	Type	Coords & level:

Samples (circle):  
 Mollusc    Flotation    Wet-sieve    Dry sieve    C14    Other: \_\_\_\_\_

Sample No. \_\_\_\_\_  
 Buckets/Litres \_\_\_\_\_

Reason for sample \_\_\_\_\_

Plan no.	Photo (b/w)	Signature <i>DCR</i>
Section no. <i>2</i>	Photo (colour)	Date <i>5/7/04</i>
Weather conditions <i>wet am, sun pm</i>	Risk of contamination	Checked
Excavation methods <i>mini digger &amp; trowel</i>		Cont.

SITE CODE HN470	Sub-division	Co-ordinate	Context Type layer	CONTEXT No 109
	Description			
Fill/Layer	1 10YR 3/2 v. dark greyish brown			Cut
1. Matrix colour	2 silty clay			1. Shape in plan
2. Matrix composition	3 friable			2. Dimensions/depth
3. Matrix compaction	4 frequent flint & cbm			3. Sides
4. Inclusions (frequency & size)	5 3.3m x 0.42m x unknown			4. Base
5. Dimensions				5. Orientation
6. Other comments				6. Other comments
Structure				Group
1. Material				1. Type
2. Bonding				2. Contexts
3. Dimensions				
4. Orientation				

Stratigraphic Relationships	Cut by	Cuts	Cut contains
	Below 105, 110	Above 108	
	Butted by	Butts	Part of Group
	Fill of	Same as	

Discussion and interpretation layer of rubble/cbm

Checked interpretation \_\_\_\_\_ Provisional date \_\_\_\_\_

Finds (circle):  
 None    Pottery    Metal    Glass    Tile    Brick    A.Bone    Shell    Burnt mats.    Other: \_\_\_\_\_

Registered Finds

Find No	Type	Coords & level:
Find No	Type	Coords & level:
Find No	Type	Coords & level:

Samples (circle):  
 Mollusc    Flotation    Wet-sieve    Dry sieve    C14    Other: \_\_\_\_\_

Sample No. \_\_\_\_\_  
 Buckets/Litres \_\_\_\_\_

Reason for sample \_\_\_\_\_

Plan no.	Photo (b/w)	Signature <i>DWK</i>
Section no. 2	Photo (colour)	Date 15/7/06
Weather conditions wet am, sun pm	Risk of contamination	Checked
Excavation methods mix digger & trowel		Cont.

SITE CODE <i>HN470</i>	Sub-division	Co-ordinate	Context Type <i>layer</i>	CONTEXT No <i>110</i>
Description				
Fill/Layer	<i>1 10YR 4/2 Dark greyish brown</i>			Cut
1. Matrix colour	<i>2 silty clay</i>			1. Shape in plan
2. Matrix composition	<i>3 friable</i>			2. Dimensions/depth
3. Matrix compaction	<i>4 frequent flints c. 0.2m</i>			3. Sides
4. Inclusions (frequency & size)	<i>5 1.2m x 0.3m cl x unknown</i>			4. Base
5. Dimensions				5. Orientation
6. Other comments				6. Other comments
Structure				Group
1. Material				1. Type
2. Bonding				2. Contexts
3. Dimensions				
4. Orientation				

Stratigraphic Relationships	Cut by	Cuts	Cut contains
	Below <i>105</i>	Above <i>109</i>	
	Butted by	Butts	Part of Group
	Fill of	Same as	

Discussion and interpretation *Pos. redeposited natural*

---



---



---



---



---

Checked interpretation	Provisional date
------------------------	------------------

Finds (circle):

None Pottery Metal Glass Tile Brick A.Bone Shell Burnt mats. Other: .....

Registered Finds		
Find No	Type	Coords & level:
Find No	Type	Coords & level:
Find No	Type	Coords & level:

Samples (circle):	Sample No.
Mollusc Flotation Wet-sieve Dry sieve C14 Other: .....	
Reason for sample	Buckets/Litres

Plan no.	Photo (b/w)	Signature <i>Day</i>
Section no. <i>2</i>	Photo (colour)	Date <i>15/7/04</i>
Weather conditions <i>wet an, sun</i>	Risk of contamination	Checked
Excavation methods <i>minedigger &amp; trowel</i>		Cont.

SITE CODE <b>HN470</b>	Sub-division	Co-ordinate	Context Type <b>cut</b>	CONTEXT No
	Description			<b>111</b>
Fill/Layer	<b>1 sub rectangular</b>			Cut
1. Matrix colour	<b>2 0.98m x 0.78m x 2.14m</b>			1. Shape in plan
2. Matrix composition	<b>3 steep - sheer</b>			2. Dimensions/depth
3. Matrix compaction	<b>4 unknown</b>			3. Sides
4. Inclusions (frequency & size)	<b>5 NW-SE</b>			4. Base
5. Dimensions				5. Orientation
6. Other comments				Group
Structure				1. Type
1. Material				2. Contexts
2. Bopding				
3. Dimensions				
4. Orientation				

Stratigraphic Relationships	Cut by	<b>114</b>	Cuts	<b>109, 108, 110, 111</b>	Cut contains
	Below	<b>105</b>	Above		<b>112 &amp; pipe</b>
	Butted by		Butts		Part of Group
	Fill of		Same as		

Discussion and interpretation **cut for waste pipe**

Checked interpretation \_\_\_\_\_ Provisional date \_\_\_\_\_

Finds (circle):  
 None    Pottery    Metal    Glass    Tile    Brick    A.Bone    Shell    Burnt mats.    Other: \_\_\_\_\_

Registered Finds

Find No	Type	Coords & level:
Find No	Type	Coords & level:
Find No	Type	Coords & level:

Samples (circle):  
 Mollusc    Flotation    Wet-sieve    Dry sieve    C14    Other: \_\_\_\_\_

Sample No. \_\_\_\_\_  
 Buckets/Litres \_\_\_\_\_

Reason for sample \_\_\_\_\_

Plan no.	Photo (b/w)	Signature <b>DK</b>
Section no. <b>2</b>	Photo (colour)	Date <b>15/7/04</b>
Weather conditions <b>wet am, sun pm</b>	Risk of contamination	Checked
Excavation methods <b>mini digger &amp; shovel</b>		Cont.

SITE CODE H2470	Sub-division	Co-ordinate	Context Type Fill	CONTEXT No 412
	Description			
Fill/Layer	1 10xR 3/4 Dark yellowish brown			Cut
1. Matrix colour 2. Matrix composition 3. Matrix compaction 4. Inclusions (frequency & size) 5. Dimensions 6. Other comments	2 slightly silty clay with gravel			1. Shape in plan 2. Dimensions/depth 3. Sides 4. Base 5. Orientation
	3 firm			
	4 frequent flints < 0.02m			
	5 0.98m x 0.78m x > 2.14m			
Structure				Group
1. Material 2. Bonding 3. Dimensions 4. Orientation				1. Type 2. Contexts

Stratigraphic Relationships	Cut by	Cuts	Cut contains
	Below 105, 114	Above nat	
	Butted by	Butts	Part of Group
	Fill of 111	Same as	

Discussion and interpretation *fill of trench for waste pipe.*

Checked interpretation \_\_\_\_\_ Provisional date \_\_\_\_\_

Finds (circle):  
 None    Pottery    Metal    Glass    Tile    Brick    A.Bone    Shell    Burnt mats.    Other: \_\_\_\_\_

Registered Finds

Find No	Type	Coords & level:
Find No	Type	Coords & level:
Find No	Type	Coords & level:

Samples (circle):  
 Mollusc    Flotation    Wet-sieve    Dry sieve    C14    Other: \_\_\_\_\_

Sample No. \_\_\_\_\_  
 Buckets/Litres \_\_\_\_\_

Reason for sample \_\_\_\_\_

Plan no.	Photo (b/w)	Signature <i>Duk</i>
Section no. <i>2</i>	Photo (colour)	Date <i>15/7/04</i>
Weather conditions <i>wet and sun in</i>	Risk of contamination	Checked
Excavation methods <i>min digger &amp; shovel</i>		Cont.

SITE CODE <b>HN470</b>	Sub-division	Co-ordinate	Context Type <b>CUT</b>	CONTEXT No <b>#13</b>
	Description			
Fill/Layer	<b>1 Sub rectangular</b>			Cut
1. Matrix colour 2. Matrix composition 3. Matrix compaction 4. Inclusions (frequency & size) 5. Dimensions 6. Other comments	<b>2 0.66m w x 0.4m dx &gt; 2-14m</b>			1. Shape in plan 2. Dimensions/depth 3. Sides 4. Base 5. Orientation
	<b>3 steep-shear</b>			
	<b>4 rounded</b>			
	<b>5 NW-SE</b>			
Structure				Group
1. Material 2. Bonding 3. Dimensions 4. Orientation				1. Type 2. Contexts

Stratigraphic Relationships	Cut by	Cuts <b>112, 110</b>	Cut contains <b>1 R4</b>
	Below	Above <del>112</del>	
	Butted by	Butts	Part of Group
	Fill of	Same as	

Discussion and interpretation **cut for water pipe**

---



---



---



---



---

Checked interpretation \_\_\_\_\_ Provisional date \_\_\_\_\_

Finds (circle):  
 None    Pottery    Metal    Glass    Tile    Brick    A.Bone    Shell    Burnt mats.    Other: \_\_\_\_\_

Registered Finds		
Find No	Type	Coords & level:
Find No	Type	Coords & level:
Find No	Type	Coords & level:

Samples (circle): Mollusc    Flotation    Wet-sieve    Dry sieve    C14    Other: _____	Sample No.
Reason for sample	Buckets/Litres

Plan no.	Photo (b/w)	Signature <b>Dall</b>
Section no. <b>2</b>	Photo (colour)	Date <b>15/7/04</b>
Weather conditions <b>wet an sun pm</b>	Risk of contamination	Checked
Excavation methods <b>min digger &amp; shovel</b>		Cont.

SITE CODE <i>HM470</i>	Sub-division	Co-ordinate	Context Type <i>Fill</i>	CONTEXT No <i>114</i>
	Description			
Fill/Layer	<i>1 10YR 3/1 v. dark grey</i>			Cut
1. Matrix colour 2. Matrix composition 3. Matrix compaction 4. Inclusions (frequency & size) 5. Dimensions 6. Other comments	<i>2 silty clay</i>			1. Shape in plan 2. Dimensions/depth 3. Sides 4. Base 5. Orientation
	<i>3 firm</i>			
	<i>4 cbm, flint, gravel</i>			
	<i>5 0.66m w x 0.4m d x &gt;2.14m</i>			
Structure				Group
1. Material 2. Bonding 3. Dimensions 4. Orientation				1. Type 2. Contexts

Stratigraphic Relationships	Cut by	Cuts	Cut contains
	Below <i>105</i>	Above <i>112</i>	
	Butted by	Butts	Part of Group
	Fill of <i>113</i>	Same as	

Discussion and interpretation *Full of water pipe cut*

Checked interpretation \_\_\_\_\_ Provisional date \_\_\_\_\_

Finds (circle):  
 None    Pottery    Metal    Glass    Tile    Brick    A.Bone    Shell    Burnt mats.    Other: \_\_\_\_\_

Registered Finds

Find No	Type	Coords & level:
Find No	Type	Coords & level:
Find No	Type	Coords & level:

Samples (circle):  
 Mollusc    Flotation    Wet-sieve    Dry sieve    C14    Other: \_\_\_\_\_

Sample No. \_\_\_\_\_  
 Buckets/Litres \_\_\_\_\_

Reason for sample \_\_\_\_\_

Plan no.	Photo (b/w)	Signature <i>Dick</i>
Section no. <i>2</i>	Photo (colour)	Date <i>15/7/06</i>
Weather conditions <i>wet an, sun</i>	Risk of contamination	Checked
Excavation methods <i>mini digger &amp; trowel</i>		Cont.







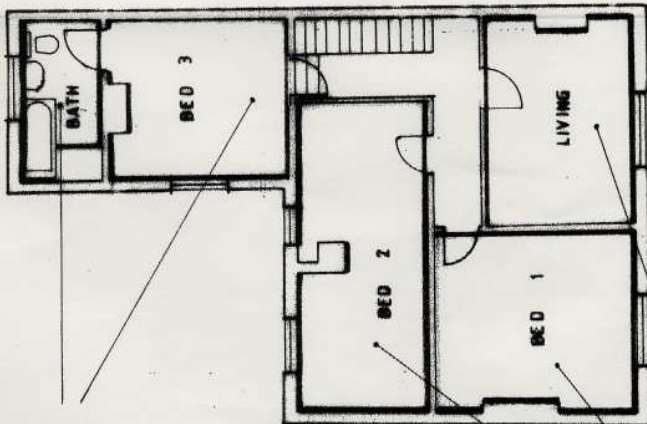
PROJECT :

TITLE :

SCALE :  
DATE :  
DRAWG. No. :

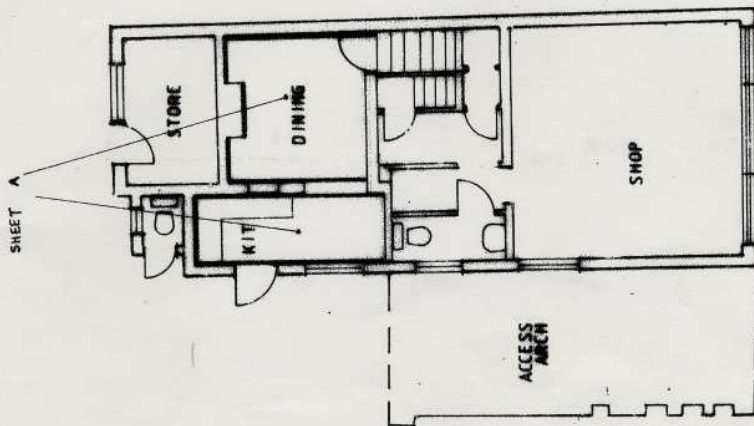
NICON HOUSE  
45 SILVER STREET  
ENFIELD, EN1 5EF

TELEPHONE 0181-361-8306  
FACSIMILE 0181-361-7961



SHEET C

SHEET B



SHEET A



C

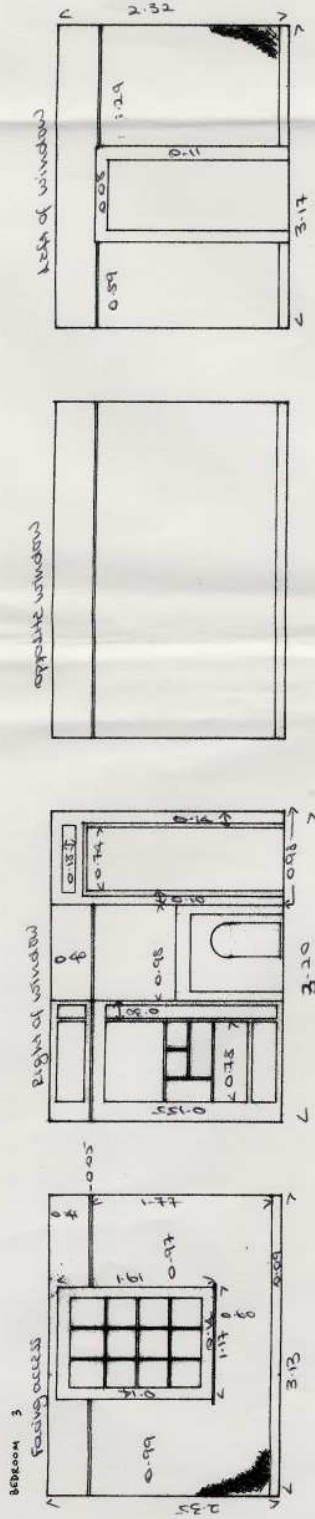
PROJECT :  
35 Silver St.,  
Enfield

TITLE : Interior Survey

SCALE : 1:50  
DATE : Oct 2003  
DRWG.No. : 000 - C

NICON HOUSE  
45 SILVER STREET  
ENFIELD, EN1 3EF

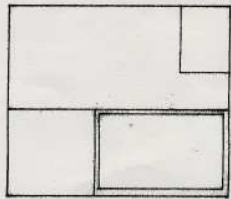
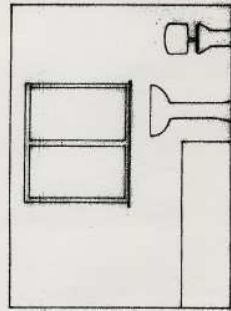
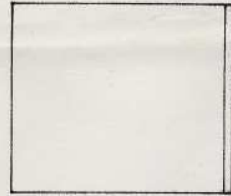
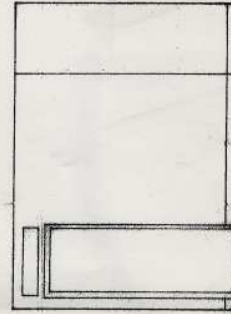
TELEPHONE 0181-363-8306  
FACSIMILE 0181-367-7961



left of window

opposite windows

right of window







A

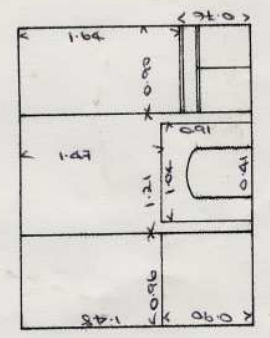
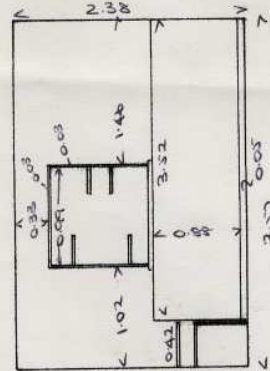
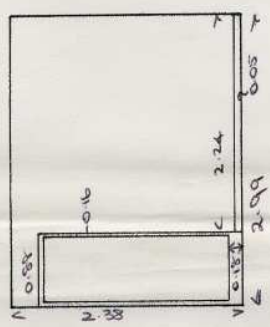
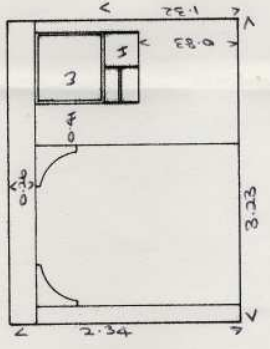
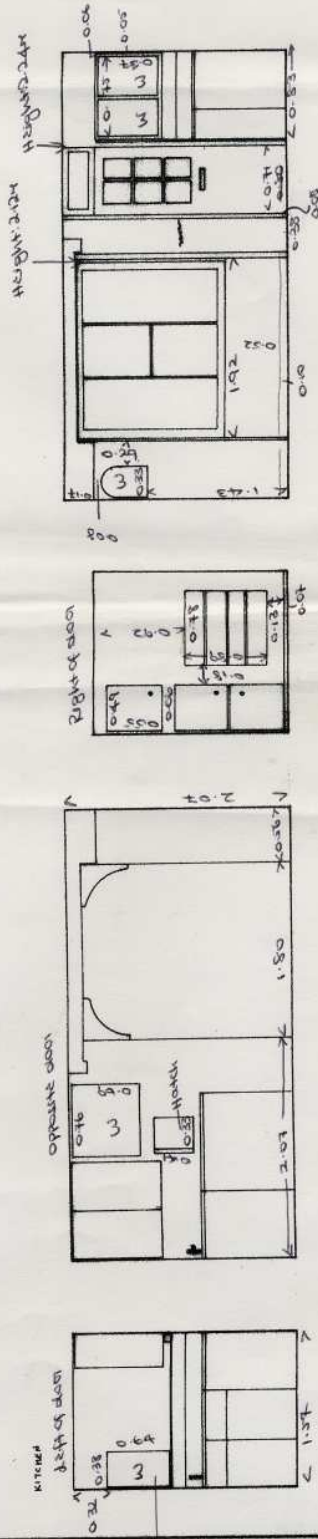
PROJECT :  
35 Silver St.,  
Enfield

TITLE : Interior Survey

SCALE : 1:50  
DATE : Oct 2003  
DRWG. No. : 000-A

NICON HOUSE  
45 SILVER STREET  
ENFIELD, EN1 3EF

TELEPHONE 0181-361-8366  
FACSIMILE 0181-367-7661



DINING ROOM

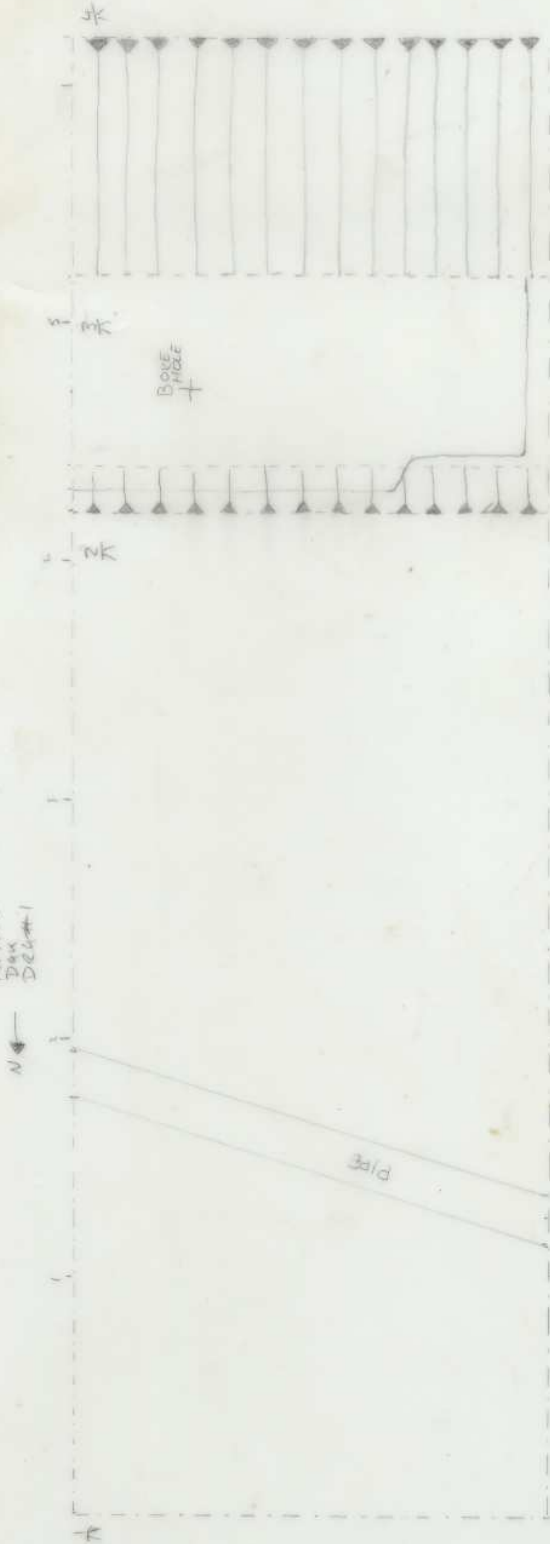
NOSE IN FIREPLACE

Window 1204



HN470 SHEET 1

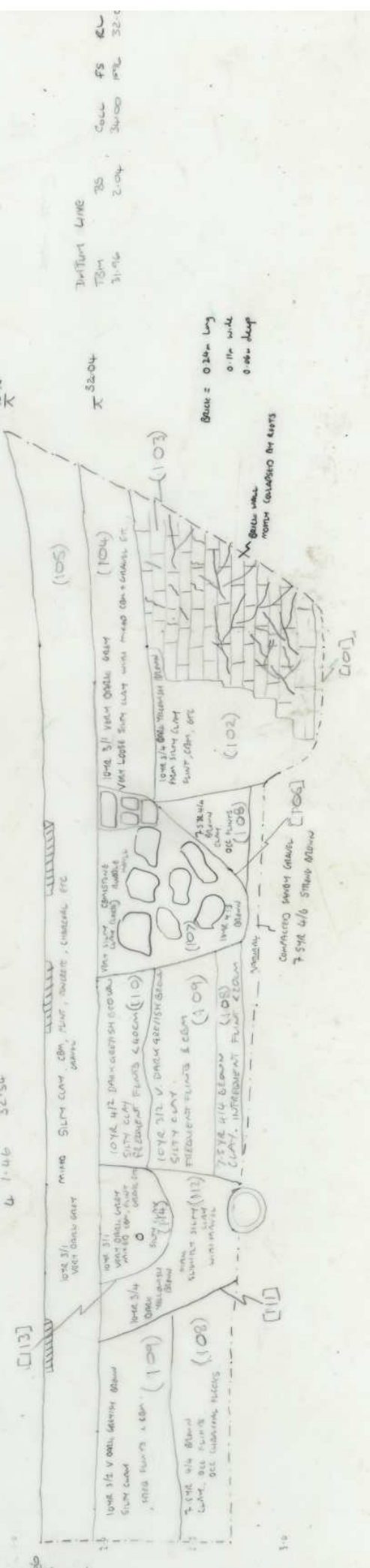
PLAN #1  
PLAN OF T-1  
SCALE 1:20  
14/7/04  
Dax  
DGL #1



T-1 31.96.00 0.52.04 CUL = 34.00 F.S. R.L.

EAST FACING SECTION OF T-1 (Western section)  
SCALE 1:20  
14/7/04  
G.S.  
DGL #2

1	1.64	32.36
2	2.68	31.12
3	3.24	30.96
4	1.46	32.54



TRIM LINE  
TBM 31.96  
2.04  
CULL FS 32.04  
30.00

Scale = 0.20m Long  
0.1m wide  
0.05m deep

CONFIRMED SANDY GRAVEL [108]  
7.5% W/S SILTY SAND

**Table of discarded finds**

<b>Context</b>	<b>Pottery</b>		<b>Brick</b>		<b>Clay pipe</b>		<b>Comments</b>
	<b>Wt.</b>	<b>No.</b>	<b>Wt.</b>	<b>No.</b>	<b>Wt.</b>	<b>No.</b>	
102	220	1			10	1	Discarded
103			2175	1	10	1	Discarded
U/S	15	1			10	1	Discarded
<b>Total</b>	<b>235</b>	<b>2</b>	<b>2175</b>	<b>1</b>	<b>20</b>	<b>2</b>	

These finds have been dated and assessed (see report). The Research Manager at the Heritage Network took the decision to discard them because of their fragmentary and unstratified nature, and because of the small size of the assemblage.