

# HERITAGE NETWORK



**'APPLEGARTH'**  
**53 Stocks Road, Aldbury, Herts.**

HN528

*Historic Buildings Record*



*THE HERITAGE NETWORK LTD*

*Registered with the Institute of Field Archaeologists as an Archaeological Organisation*

Archaeological Director: David Hillelson, BA MIFA

‘APPLEGARTH’  
53 Stocks Road, Aldbury, Herts.

HN528

*Historic Buildings Record*

Prepared on behalf of Cathy and Alan Sykes

by

David Hillelson, BA MIFA

Report no.301

*August 2005*

© The Heritage Network Ltd

11 FURMSTON COURT, LETCHWORTH HERTS. SG6 1UJ

TEL: (01462) 685991 FAX: (01462) 685998

## Contents

	Summary .....	Page i
Section 1	Introduction .....	Page 1
Section 2	Building recording .....	Page 2
Section 3	Sources Consulted.....	Page 5
Section 4	Illustrations.....	Page 6
Appendix 1	Black and White Photographic Log .....	Page 7
Appendix 2	Digital Photographic Log .....	Page 8

*The cover photograph shows a view of the barn looking NE*

## Acknowledgements

The fieldwork for this project was carried out by David Hillelson and Abigail Rothwell. Additional cartographic research was undertaken by Helen Ashworth. The report text was written, and the illustrations were prepared by David Hillelson.

The Heritage Network would like to express its thanks to Cathy and Alan Sykes, owners; Mark Battram, Battram Associates; the staff of Hertfordshire Archives and Local Studies; and the staff of the County Archaeology Office, HCC, for their co-operation and assistance in the execution of this project.

## Summary

<b>Site name and address:</b>	‘Applegarth’, 53 Stocks Road, Aldbury, Herts.		
<b>County:</b>	Hertfordshire	<b>District:</b>	Dacorum
<b>Village/town:</b>	Aldbury	<b>Parish:</b>	Aldbury
<b>Planning reference:</b>	4/2270/04	<b>NGR:</b>	496462 212539
<b>Client name and address:</b>	Cathy and Alan Sykes, address as above		
<b>Nature of work:</b>	Barn conversions	<b>Present land use:</b>	N/a
<b>Site Code:</b>	HN528	<b>Other reference:</b>	N/a
<b>Organisation:</b>	Heritage Network	<b>Site Director:</b>	David Hillelson
<b>Type of work:</b>	Building Recording	<b>Curating Museum:</b>	Dacorum Heritage Trust
<b>Related SMR Nos:</b>	N/a	<b>Periods represented:</b>	Post-medieval
<b>Previous summaries/reports:</b>	N/a		

**Synopsis:** As the result of an archaeological condition on the planning permission for the conversion of a barn and stable block at ‘Applegarth’, Stocks Road, Aldbury, Herts, the Heritage Network was commissioned by the owners to provide a record of the buildings, and an overview of their development, prior to the start of the conversion works.

The barn includes much replacement timber, but the stopped and jowled principal posts, and the roof supported on a roof truss with raking queen struts, suggest a date c.1600. The stables were originally built as an open fronted shed, the front wall plate being supported on cast-iron stanchions which remain in situ. These features and the manufactured roof trusses suggest a late 19<sup>th</sup> century date, although the map evidence suggests that the building replaced an earlier one on the same site. A greenhouse and attached boiler room to the west are 20<sup>th</sup> century.

## 1. Introduction

**1.1** This report has been prepared on behalf of *Cathy and Alan Sykes*, as part of a programme of the recording of a former barn and stable block at the rear of ‘Applegarth’, 53 Stocks Road, Aldbury, Herts. The planning permission for conversion works to the building (ref. 4/2270/04), granted by Dacorum Borough Council (DBC), has been subject to a standard archaeological condition, in accordance with the provisions of the Department of the Environment's Planning Policy Guidance Note 16 on Archaeology and Planning (PPG16). The scope of the required work was defined in a *Design Brief for Archaeological Building Recording and Archaeological Monitoring and Recording* prepared by the *County Archaeology Office (CAO)* of Hertfordshire County Council, acting as advisers to DBC (ref. KB 06/03/05). A full specification for the work carried out is included in the Heritage Network's approved Project Design dated May 2005.

**1.2** ‘Applegarth’ is located towards the northern end of the village and consists of a 17<sup>th</sup> or 18<sup>th</sup> century timber-framed house with a Victorian brick extension to the north, believed formerly to have been a butcher's shop (Figure 1). The block which forms the present study lies to the north of the dwelling across a driveway, and is formed of two buildings of different periods aligned at right angles to each other. The earlier building is a timber-framed barn aligned north-south along the street frontage. A later brick-built building, aligned east-west, forms an extension to the west of the barn. The buildings are centred on NGR 496462 212539. The development proposes the conversion of the buildings to residential use.

**1.3** Buildings such as this, which are pre-modern in date, have been identified in the regional research agenda as being of particular interest and as facing a high rate of loss through redundancy, conversion and demolition (*East Anglian Archaeology Occasional Paper 8, 2000*). The planning authority has identified the building as having intrinsic archaeological interest.

**1.4** The aim of the project has been to make a high quality record of the structure before the start of conversion works and to monitor those works to ensure that any hidden features of interest are observed and recorded adequately. An appropriate level of documentary research has been undertaken to place the findings in their local and regional historical context.

**1.5** The full archive for the project will be deposited with the Dacorum Heritage Trust in order to preserve a record of the buildings in their present form. It includes original drawings as well as architect's plans, elevations and sections, original medium-format black and white photographic negatives and contact sheets, and digital images.

## 2. Building recording

### GENERAL

**2.1** The site consists of a dwelling house of at least 17<sup>th</sup> century date, with a 19<sup>th</sup> century northern extension, and a separate barn, stables and greenhouse to the north (Plate 1). The house, which is Grade II listed, lies outside the present planning application and is, therefore, excluded from the study. The barn, stables and greenhouse have planning consent for conversion to residential use (Plate 2).

### CARTOGRAPHIC EVIDENCE

**2.2** Although the listing details for the property refer to an inventory of 1598 which mentions a house on the present site (IoE 355659), the earliest available map was the *Map of His Grace the Duke of Bridgewater's Estate in the Counties of Buckingham and Hartford taken in the Year 1762 by G. Grey of Lancaster* (HALS: AH.2270) (Figure 2). This shows a house and barn in the location of the present buildings, and further barns or outhouses at the western extent of the plot. No buildings are shown on the site of the present stables.

**2.3** The Godman map of 1803 (HALS: 56476) (Figure 3), and an undated early 19<sup>th</sup> century map of Aldbury (HALS: AH.647) both show an extension on the western side of the barn leading into a square structure. A similar arrangement is shown on the Tithe Map of 1840 (HALS: DSA4/2/2) (Figure 4), and a map of the parish of Aldbury dated 1845 (HALS: D/EX 134 P1) (Figure 5). The same arrangement may be illustrated on the 1<sup>st</sup> edition of the Ordnance Survey dated 1884, but the only accessible version was the 6<sup>th</sup> edition on the internet.

**2.4** By 1899, when the 2nd edition of the Ordnance Survey was published (Figure 6), the barn at the western extent of the plot had been demolished, and the present arrangement had been established (Figure 7).

### TIMBER BARN

**2.5** The barn is a 2-bay structure, aligned north to south along the road frontage (Figure 8; Plate 3). It is constructed of a timber frame set on dwarf walls (Plate 4). These are roughly coursed and, on the western elevation, appear to have been laid dry. The sill beam and wall plate are much decayed. On the eastern and western elevations the sill is in three sections of half-lap jointed timber. The central section in the eastern elevation may be original.

**2.6** The northern end wall of the structure has jowled and stopped principal posts, and the middle roof truss has raking queen struts (Figure 10). The tie beam is probably original, on original posts, but the queen struts are replacements. A single carpenter's mark was noted on the principle rafter above the tie beam on the western side (Plate 5).

**2.7** The roof purlins consist of split tree trunks, roughly debarked, which may be original, though the rafters have been largely replaced. It is likely that the roof was originally thatched, but now consists of clay tiles, the older parts of which are pegged with wood, and bedded on straw ‘torching’ (Plate 6).

**2.8** The southern elevation of the barn has been completely remodelled to provide a modern garage entrance. The eastern and western elevations have also been remodelled with modern studs, braces and weatherboarding. The northern elevation may retain some original elements including the tie-beam and some studs (Figure 10). The northern elevation has been weatherboarded, probably in elm wood, which has been sealed with bitumen.

**2.9** The floor consists of modern tarmac. Beneath this was a chalk surface. A large root still *in situ*, suggests the recent presence of a large tree in the vicinity.

### **STABLES**

**2.10** The stable block was built on to the northern end of the western elevation of the barn to form an east-west range, and was originally open-fronted to the south (Figure 8). The wall plate on the front elevation is supported on a brick gable at its western end, and on a series of three iron stanchions attached to shaped wooden pads (Plate 7).

**2.11** The northern elevation and the western gable are in a mixture of normal and vitrified brick in Flemish bond with a lime mortar. At the western end of the northern elevation an entrance or through way has been blocked in similar brick, slightly out of alignment (Plate 8). The through way is defined by a buttress on the internal elevation. The roof is of clay tile.

**2.12** The original open-fronted structure was later divided into two by an L-shaped half height brick wall, butt jointed to the rear elevation. The remaining open bay was itself later divided to form two smaller bays using a timber-framed and weatherboarded partition.

**2.13** The roof trusses appear to be pre-formed and are likely to be late Victorian in date (Plate 9). The purlins and rafters are of sawn softwood.

### **GREENHOUSE**

**2.14** A later brick extension (Figure 8), which appears to be the remains of a greenhouse, has been added to the western end. This consists of early 20th century cement mortared bricks. The wall stands to full height on the northern elevation, and to half height on the southern side (Plate 10).

**2.15** A smaller structure lies to the west of this, originally constructed to house the greenhouse boiler. The front plate of the boiler survives (Plate 11) and is inscribed: *The “HORSE SHOE” boiler. Sole manufacturers and proprietors Chas P. Kinnell & Co. Ltd, 65 & 65a Southwark Street, London S.E.*

### **DISCUSSION**

**2.16** Although the barn has been much altered over time, much of the basic frame, including the principal posts, wall plates, and the central truss of this two bay structure are likely to be original. From these it is possible to suggest a date of c. 1600 for the barn’s construction, based on the stopped jowls and the raked queen struts. Such a date would fit with the documentary sources which indicate that there was a house on the property in 1598.

**2.17** The stables are of a later Victorian type, with manufactured roof trusses and cast iron stanchions supporting an originally open front elevation. The cartographic evidence suggests that the present building replaced an earlier east-west extension to the barn between 1884 and 1899, although the evidence of the only available version of the 1884 Ordnance Survey map is unclear.

**2.18** The greenhouse is a later addition in a different brick and using a cement mortar. It appears to have been in existence by 1899, and may possibly be contemporary with the addition of a brick partition to the open fronted block to create the first of the two stable enclosures. The boiler shed is a later addition to the greenhouse. No date for the boiler has been ascertained but it is known that the company that manufactured it was still trading in 1956.

### 3. Sources Consulted

#### *CARTOGRAPHIC*

##### **Hertfordshire Archives and Local Studies:**

DSA4/2/1	Tithe Award, 1840
DSA4/2/2	Tithe Map, 1840
AH.647	Map of Aldbury, early 19 <sup>th</sup> C
AH.2270	Map of His Grace the Duke of Bridgewater’s Estate in the Counties of Buckingham and Hartford taken in the Year 1762 by G. Grey of Lanc
56473	Map of the Ashridge Estate, early 19 <sup>th</sup> C
56476	Map of the Parish of Aldbury in the County of Hertford, 1803.
D/EX 257 Z1	Reference book, by Thomas Godman, to map 56476
D/EX 134 P1	Plan of the Parish of Aldbury in the County of Herts, c.1845. With accompanying reference book
OS, 1899	25” scale, Sheet XXV.12 2 <sup>nd</sup> edition, 1899
OS, 1924	25” scale, Sheet XXV.12 3 <sup>rd</sup> edition, 1924
OS, 1976	1:2500, Sheet SP 9612 – 9712, 1976

##### **Internet:**

OS 1882	Ordnance Survey, 6” series, 1st edition, 1884 (496462,212539) ( <a href="http://www.old-maps.co.uk">www.old-maps.co.uk</a> )
---------	--

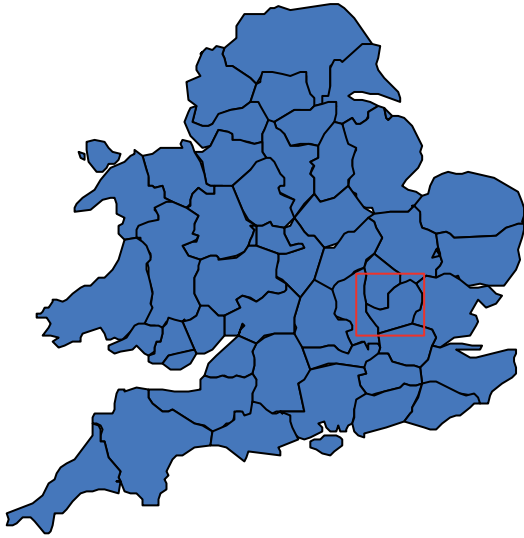
#### *BIBLIOGRAPHY*

- Brunskill, R.W., 1978, *Illustrated Handbook of Vernacular Architecture*. Faber.
- Brunskill, R.W., 1997, *Houses and Cottages in Britain*. Victor Gollancz
- Harvey, N., 1984, *A History of Farm Buildings in England and Wales*. David & Charles.
- Hewitt, C.A., 1980, *English Historic Carpentry*. Phillimore.
- Hillelson, D., 2005, ‘Applegarth’, *Stocks Road, Aldbury: Project Design*. Heritage Network. IoE 355659, DCMS Listing details: Applegarth, 53 Stocks Road (west side)



## 4. Illustrations

Figure 1 .....	Site location
Figure 2 .....	Map of Aldbury, 1762
Figure 3 .....	Map of Aldbury, 1803
Figure 4 .....	Aldbury tithe map, 1840
Figure 5 .....	Map of Aldbury, 1845
Figure 6 .....	2nd Edition Ordnance Survey map, 1899
Figure 7 .....	Ordnance Survey map, 1:2500 series, 1976
Figure 8 .....	Plan view and elevations (western & eastern)
Figure 9 .....	Elevations 9 (southern and northern)
Figure 10 .....	Barn sections
Plate 1 .....	‘Applegarth’ looking north along street frontage
Plate 2 .....	Barn and stable block looking NE
Plate 3 .....	Barn, S & W elevations looking NE
Plate 4 .....	Barn, interior looking N
Plate 5 .....	Carpenter’s mark on western middle principal rafter
Plate 6 .....	Straw ‘torching’ in barn roof
Plate 7 .....	Stables, cast iron stanchion
Plate 8 .....	Stables, blocked through way
Plate 9 .....	Stables, roof truss
Plate 10 .....	Greenhouse and boiler room looking N
Plate 11 .....	Boiler room, manufacturer’s inscription on boiler



Site Location

Scale 1:5000

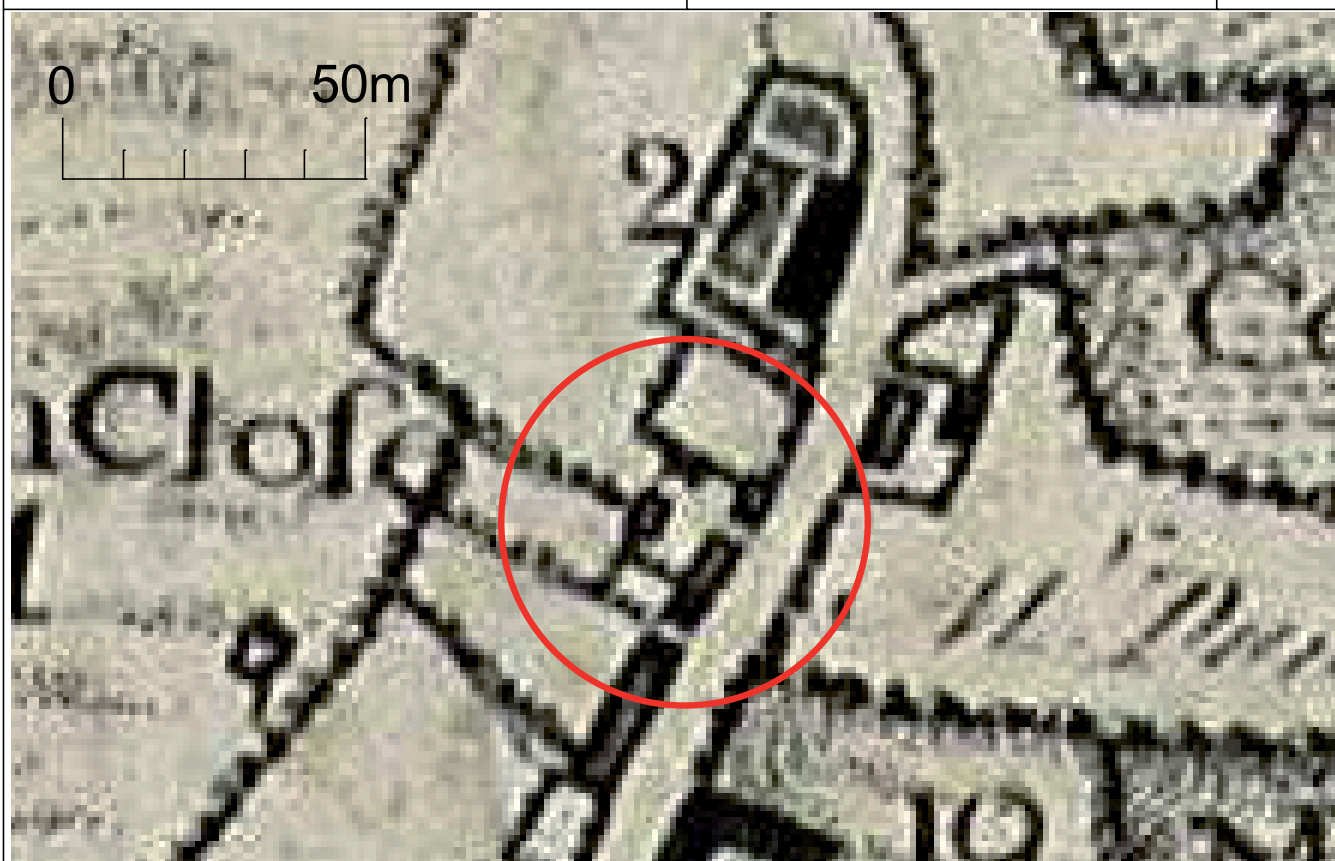


Figure 2: Map of Aldbury, 1762 (HALS: AH.2270)

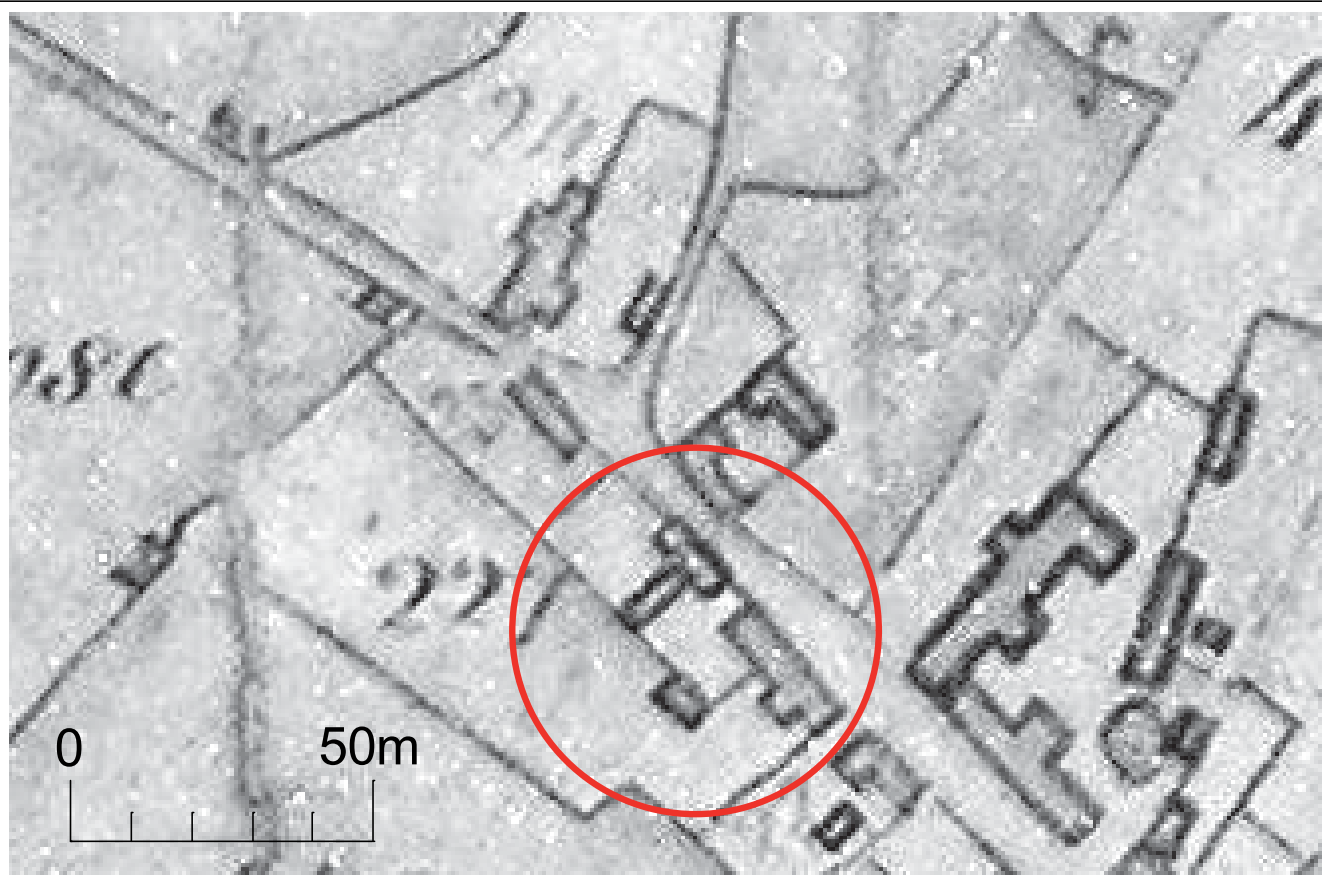


Figure 3: Map of Aldbury, 1803 (HALS: 56476)



Figure 4: Aldbury Tithe Map, 1840 (HALS: DSA4/2/2)



Figure 5: Map of Aldbury, 1845 (HALS: D/EX 134 P1)

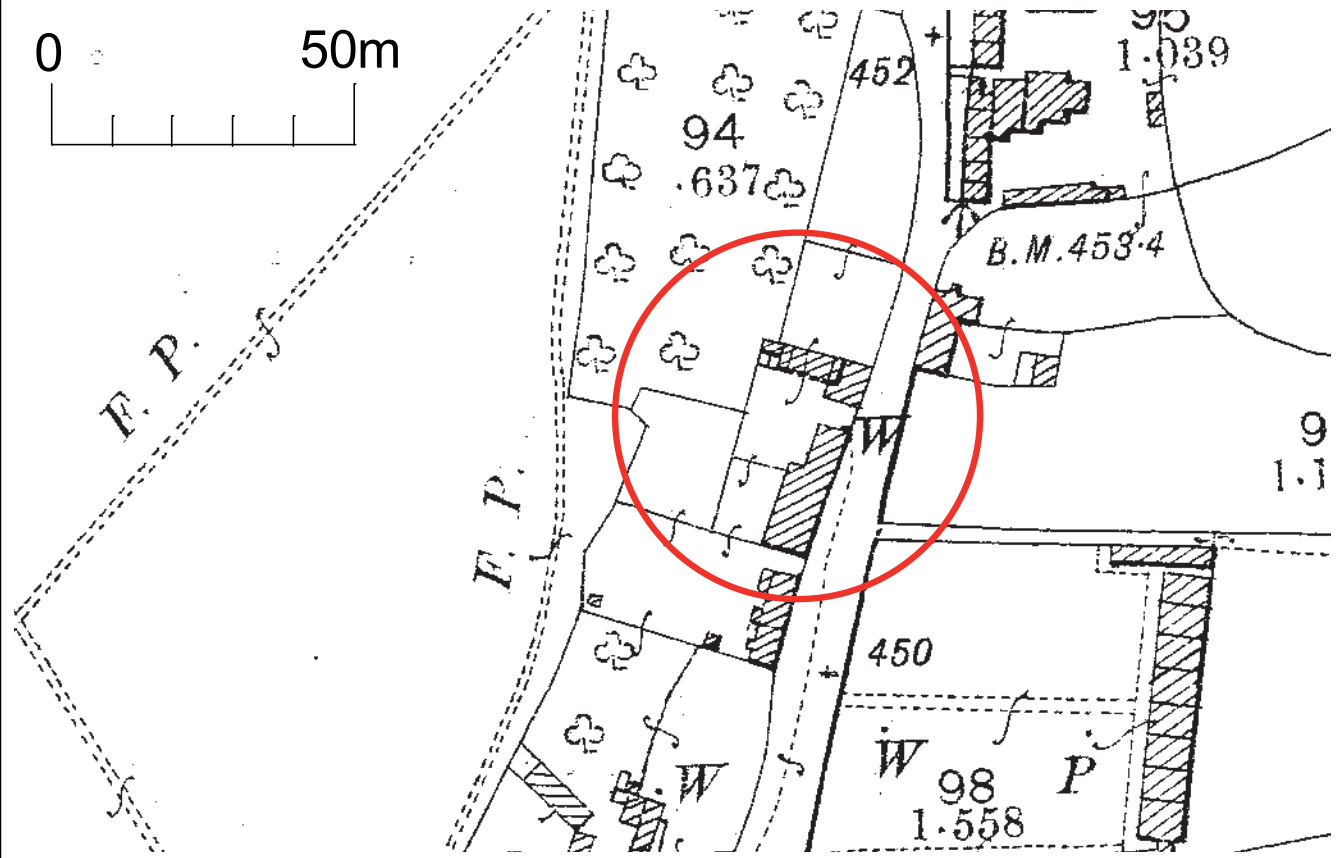


Figure 6: Ordnance Survey, 1899

Reproduced from the Ordnance Survey with the permission of the controller of Her Majesty's Stationery Office, Licence no.AL100014861

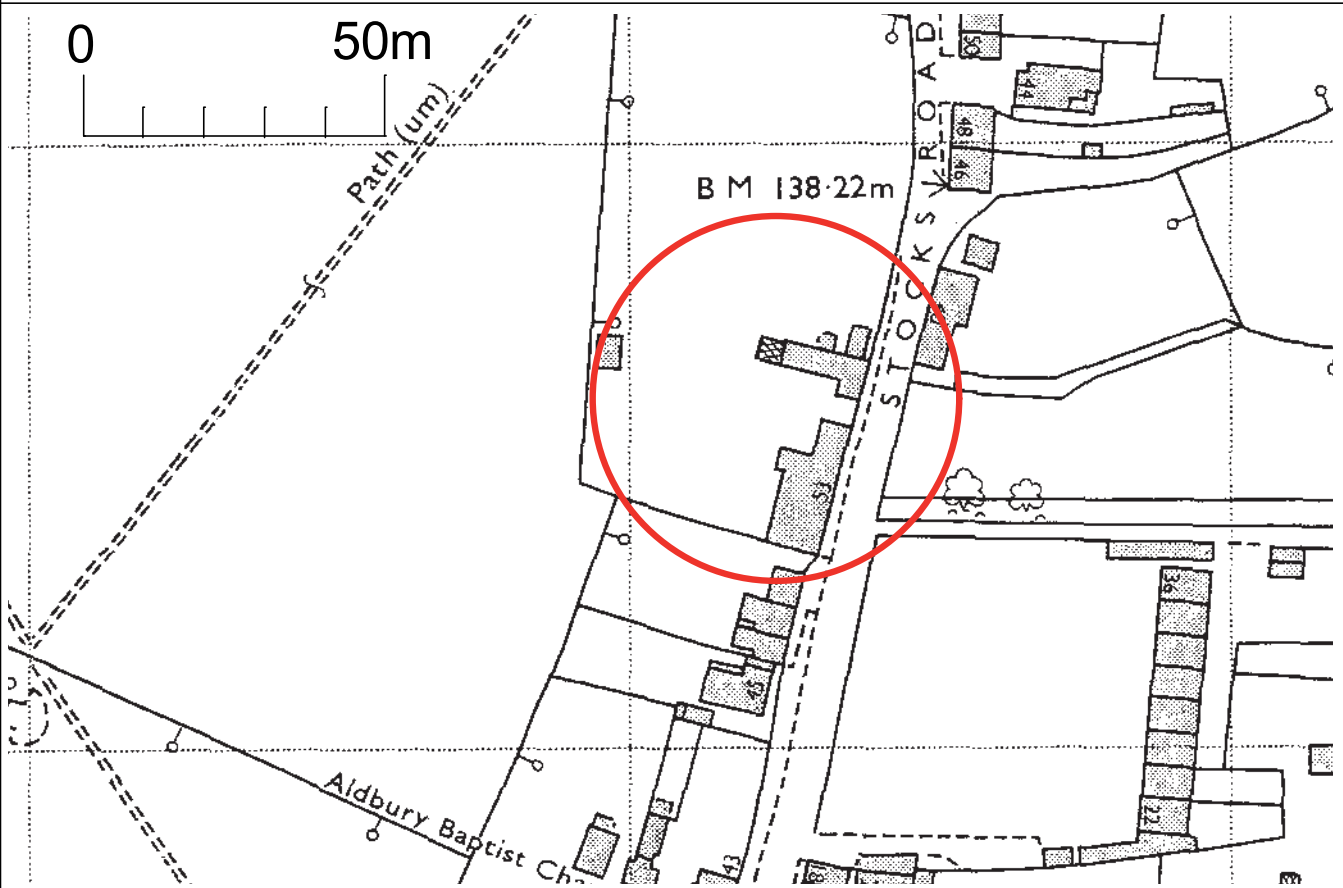
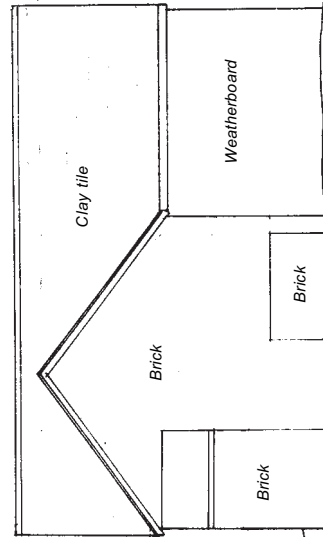
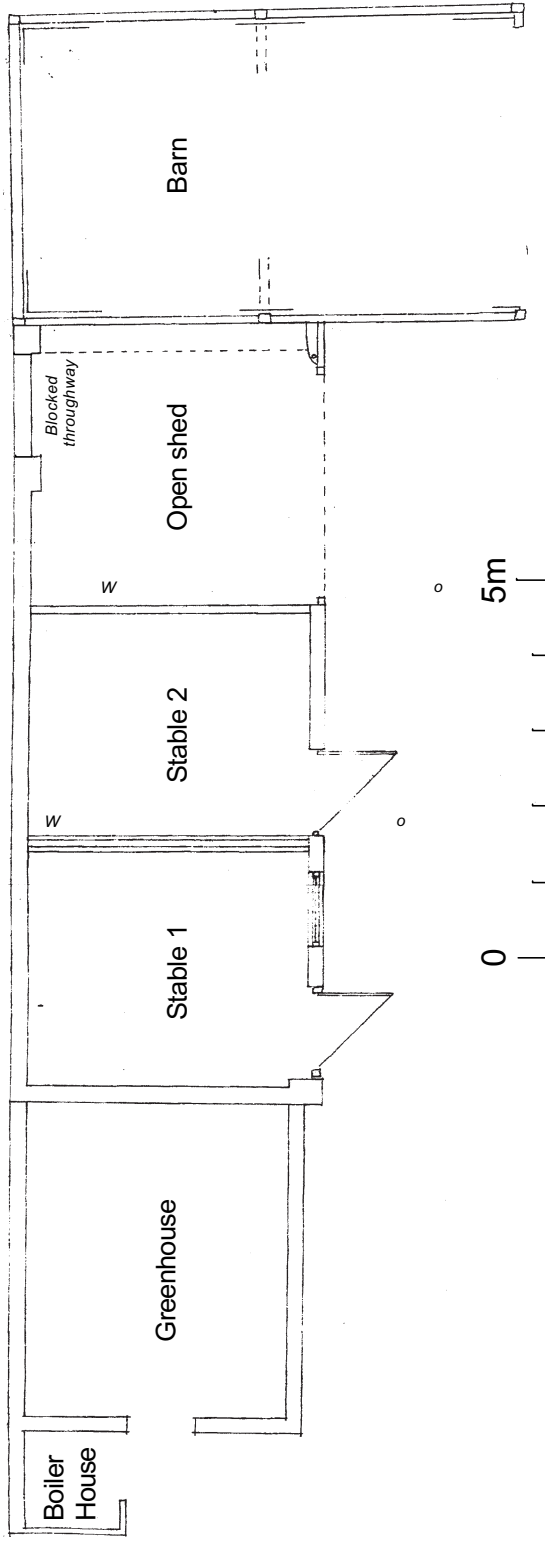
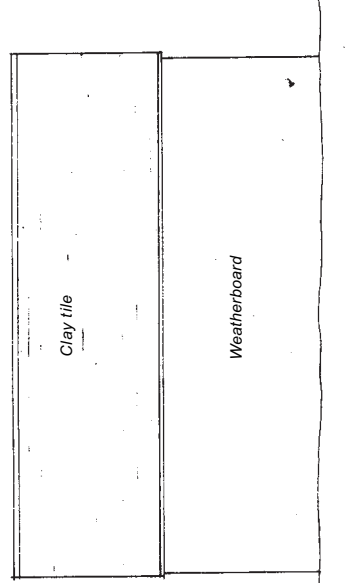


Figure 7: Ordnance Survey, 1976

Reproduced from the Ordnance Survey with the permission of the controller of Her Majesty's Stationery Office, Licence no.AL100014861



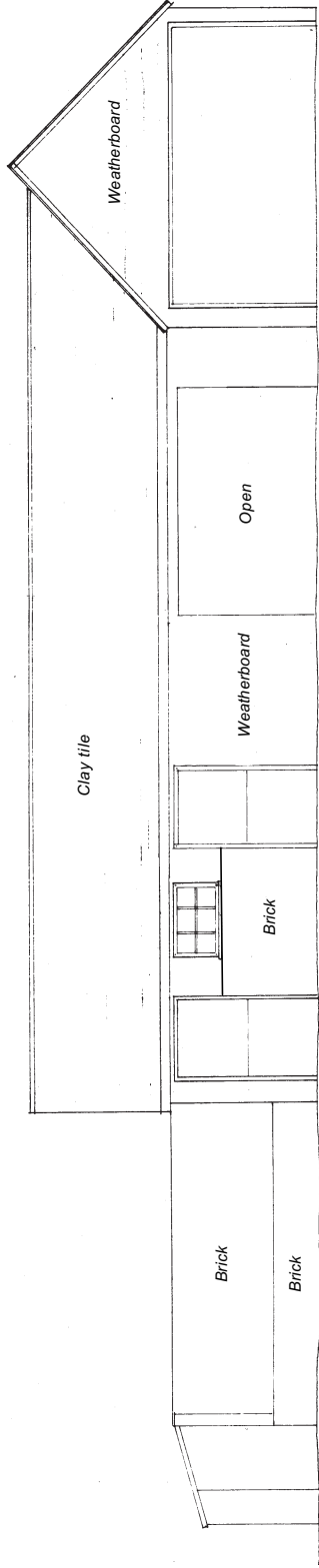
Western Elevation



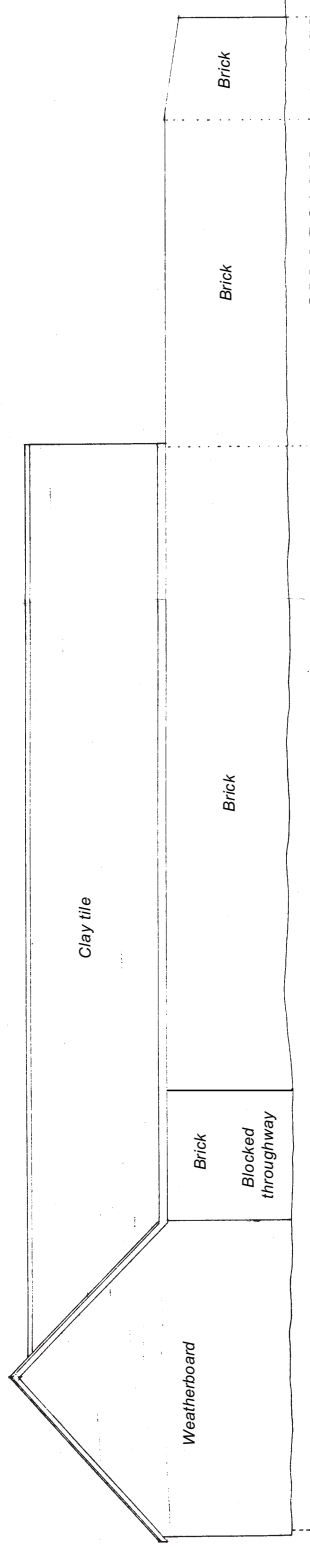
Eastern Elevation

Plan view and elevations (western and eastern)

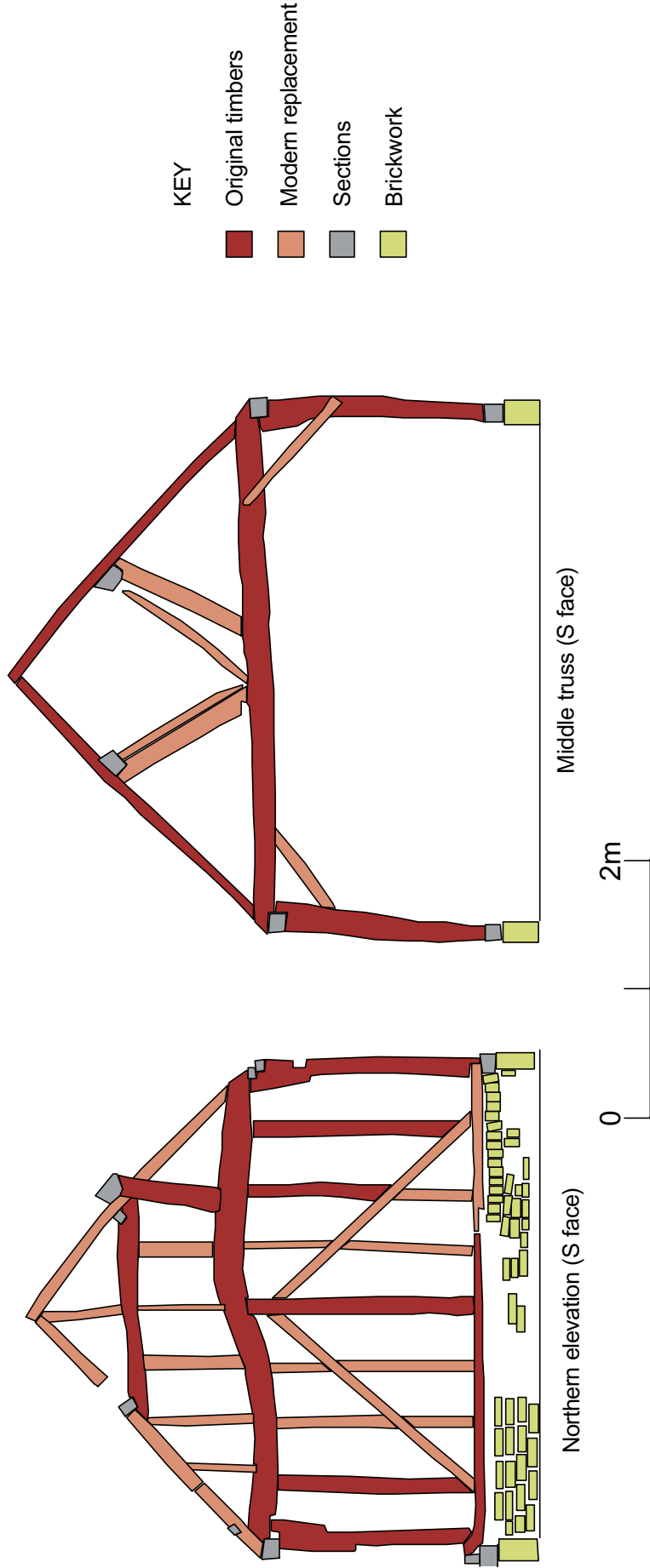
(based on drawings provided by Battram Associates)



Southern Elevation



Northern Elevation



Barn Sections





Plate 1: 'Applegarth' looking north along street frontage



Plate 2: Barn and stable block looking NE



Plate 3: Barn, S & W elevations looking NE



Plate 4: Barn, interior looking N



Plate 5: Carpenter's mark on western middle principal rafter



Plate 6: Straw 'torching' in barn roof



Plate 7: Stables, cast iron stanchion



Plate 8: Stables, blocked through way



Plate 9: Stables: roof truss



Plate 10: Greenhouse and boiler room, looking N

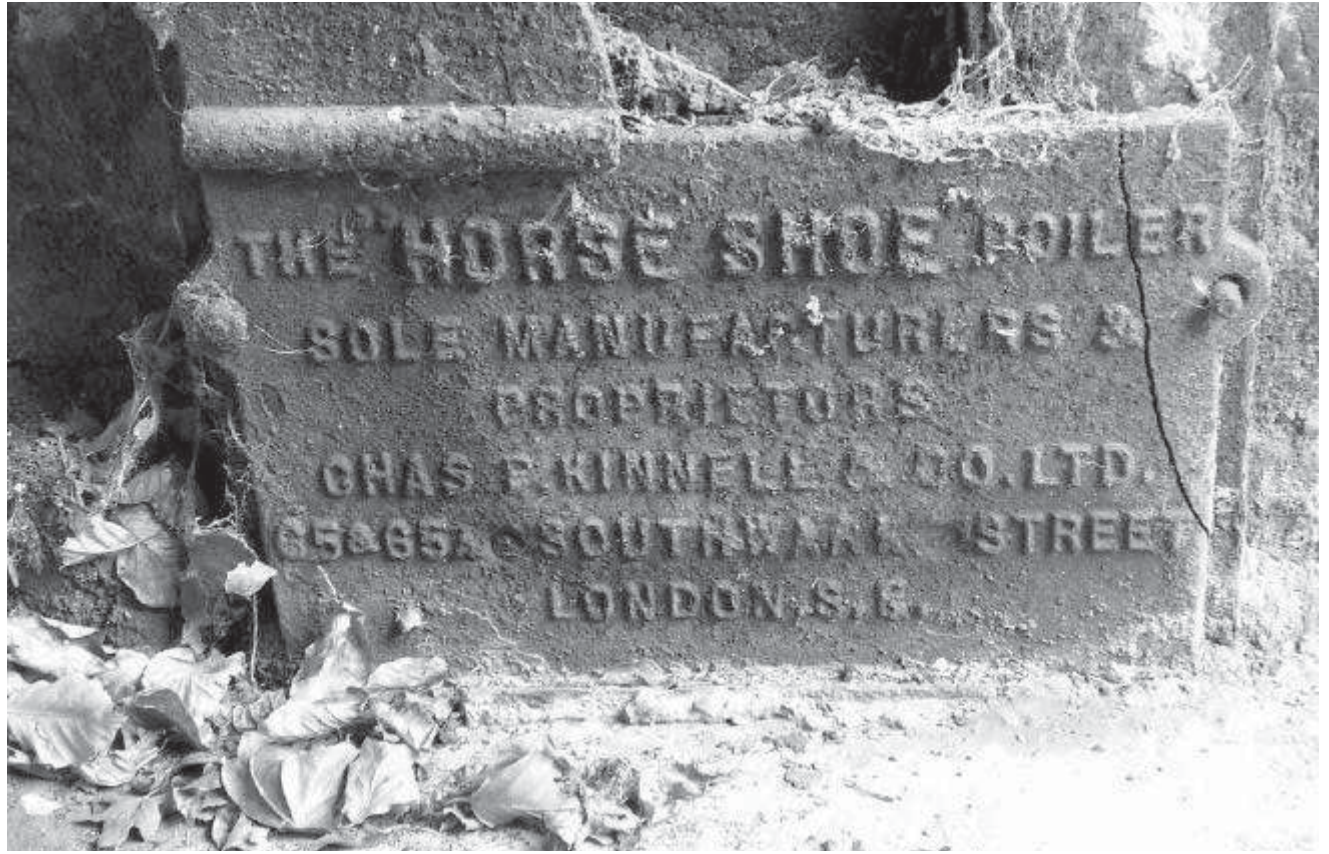


Plate 11: Boiler room, manufacturer's inscription on boiler

# **Appendix 1**

## **Black & White Photographic Log**



Frame 1: Blank

Frame 2: Timber barn, S & W elevations

Frame 3: Barn and stables, S elevation



Frame 4: Barn and stables, S and W elevations

Frame 5: Greenhouse, S elevation

Frame 6: All buildings, N elevation



Frame 7: Stables, N elevation

Frame 8: Barn, N elevation

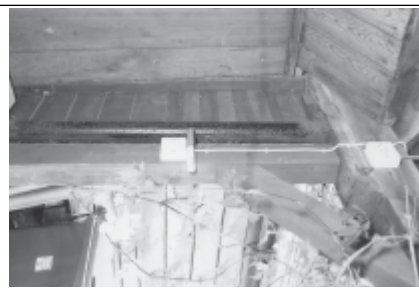
Frame 9: Barn, S & E elevations



Frame 10: Barn, N & E elevations

Frame 11: 'Applegarth', E elevation of property

Frame 12: Stables, roof truss



Frame 13: Stables, roof truss

Frame 14: Stables, stanchion and pad

Frame 15: Barn, interior before clearance





Frame 1: Barn, roof truss and N internal elevation



Frame 2: Barn, roof truss and N internal elevation



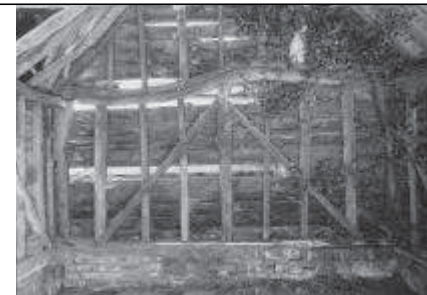
Frame 3: Barn, roof truss and N internal elevation



Frame 4: Barn, NE corner



Frame 5: Barn, NW corner



Frame 6: N internal elevation



Frame 7: Barn, N roof truss



Frame 8: Barn, W internal elevation



Frame 9: Barn, E internal elevation



Frame 10: Barn, S internal elevation



Frame 11: Barn, W internal elevation



Frame 12: Barn, E internal elevation



Frame 13: Roof, showing torching



Frame 14: Barn, S & E elevations



Frame 15: Barn, S & E elevations

## Appendix 2

### Digital Photographic Log

Frame No.	Description	Facing
D001	Barn and stables, S & W elevations	NE
D002	Ditto	Ditto
D003	Barn, S & W elevations	Ditto
D004	Greenhouse, S elevation	N
D005	Barn and stables, S & W elevations	E
D006	Barn and stables, N elevation	SE
D007	Barn, N elevation	SE
D008	Barn and stables, N elevation	SE
D009	‘Applegarth’, street frontage	NW
D010	Ditto	Ditto
D011	Ditto	SW
D012	Stables, roof truss (N half)	E
D013	Stables, roof truss (S half)	E
D014	Stables, partition (N half)	E
D015	Stables, partition (S half)	E
D016	Greenhouse furnace	E
D017	Greenhouse furnace, inscription detail	E
D018	Stables, partition wall (E face)	NW
D019	Stables, partition (W face)	NE
D020	Stables, N elevation (detail)	S
D021	Stables, blocked throughway	S
D022	Barn, N elevation weatherboarding	SE
D023	Barn, N internal elevation and roof truss	N
D024	Ditto	Ditto
D025	Ditto	Ditto
D026	Barn, NE principal post	NE
D027	Barn, NW principal post	NW
D028	Barn, N internal elevation (lower)	N
D029	Barn, N internal elevation (upper)	N
D030	Barn, E internal elevation (S half)	SE
D031	Barn, W internal elevation (S half)	SW
D032	Barn, S internal elevation	S
D033	Barn, W internal elevation (N half)	NW
D034	Barn, E internal elevation (N half)	NE
D035	Barn, internal roof detail showing torching	E
D036	Barn, middle truss, W principal rafter, carpenter’s mark	N
D037	Ditto	Ditto
D038	Barn, S and W elevations	NE



HN528-D001



HN528-D002



HN528-D003



HN528-D004



HN528-D005



HN528-D006



HN528-D007



HN528-D008



HN528-D009



HN528-D011



HN528-D012



HN528-D013



HN528-D014



HN528-D015



HN528-D016



HN528-D017



HN528-D018



HN528-D019



HN528-D020



HN528-D021



HN528-D022



HN528-D023



HN528-D025



HN528-D026



HN528-D027



HN528-D028



HN528-D029



HN528-D030



HN528-D031



HN528-D032



HN528-D033



HN528-D034



HN528-D035



HN528-D037



HN528-D038