

HERITAGE NETWORK



FORMER JENYNS SCHOOL **The Street, Braughing, Herts.**

HN556

Historic Buildings Record



THE HERITAGE NETWORK LTD

Registered with the Institute of Field Archaeologists as an Archaeological Organisation

Archaeological Director: David Hillelson, BA MIFA

‘FORMER JENYNS SCHOOL’ The Street, Braughing, Herts.

HN556

Historic Buildings Record

Prepared on behalf of Phase 4 Developments Ltd

by

David Hillelson, BA MIFA

Report no.314

November 2005

© The Heritage Network Ltd

11 FURMSTON COURT, LETCHWORTH HERTS. SG6 1UJ
TEL: (01462) 685991 FAX: (01462) 685998

Contents

	Summary	Page i
Section 1	Introduction	Page 1
Section 2	Building record	Page 2
Section 3	Discussion	Page 9
Section 4	Sources Consulted	Page 10
Section 5	Illustrations	<i>following</i> Page 11
Appendix 1	Photographic Log	Page 12
Appendix 2	Client's Digital Photographic Log	Page 14

The cover photograph shows a view of the site from the west

Acknowledgements

The fieldwork for this project was carried out by David Hillelson, Alison Hudson and Geoff Saunders. Illustrations were prepared by David Hillelson and Alison Hudson.

The Heritage Network would like to express its thanks to Kris de Havilland, Phase 4 Developments Ltd; Val High, Braughing Local History Society; the staff of Hertfordshire Archives and Local Studies; and the staff of the County Archaeology Office, HCC, for their co-operation and assistance in the execution of this project.

Summary

Site name and address:	Former Jenyns School, The Street, Braughing, Herts		
County:	Hertfordshire	District:	East Hertfordshire
Village/town:	Braughing	Parish:	Braughing
Planning reference:	3/01/0769	NGR:	TL 39586 25033
Client name and address:	Phase 4 Developments Ltd, Wolverton, Hadley Road, Enfield, EN2 8JY		
Nature of work:	Conversion to dwellings	Previous land use:	Former school
Site Code:	HN 556	Other reference:	N/a
Organisation:	Heritage Network	Site Director:	David Hillelson
Type of work:	Building Recording	Curating Museum:	Hertford Museum
Related SMR Nos:	N/a	Periods represented:	Victorian/Modern
Previous summaries/reports:	N/a		

Synopsis: As the result of an archaeological condition on the planning permission for the conversion to residential use of the former Jenyns School, The Street, Braughing, Herts, the Heritage Network was commissioned by the developers to provide a record of the buildings, and an overview of their development, prior to the start of the conversion works. At the time that the Heritage Network was commissioned to undertake the recording, both buildings had been stripped out internally.

Building 1, which forms the original Girls' School at the west end of the site, was built in 1868 and extended to include an Infants' School in 1877. Building 2, which forms the original Boys' School and Master's House at the east end of the site, was built in 1875. Structural changes to the buildings since then have been relatively minor, and, for the most part reflect changes in educational practice.

1. Introduction

1.1 This report has been prepared on behalf of *Phase 4 Developments Ltd*, as a record of two former buildings in The Street, Braughing, Herts. The planning permission for the development (ref.3/01/0769), granted by East Hertfordshire District Council (EHDC), has been subject to a standard archaeological condition, in accordance with the provisions of the Department of the Environment's *Planning Policy Guidance Note 16* (PPG16). The scope of the required work was defined in a *Design Brief for Historical Building Recording* prepared by the *County Archaeology Office* (CAO) of Hertfordshire County Council, acting as advisers to EHDC (ref. JS 10/10/2005). A full specification for the work carried out is included in the Heritage Network's Project Design dated October 2005.

1.2 The buildings lie on the south side of The Street, just to the east of its junction with Malting Lane and Ford Street, centred on national grid reference TL 39586 25033 (Figure 1). They are brick built and mostly Victorian in date with later modern extensions. Such buildings have been identified in regional research agenda as being of particular interest and as facing a high rate of loss through redundancy, conversion and demolition (East Anglian Archaeology Occasional Paper 8, 2000). The buildings, which form the former Girls' and Boys' Schools, and later the Infants' and Primary Schools, are intended to be converted into dwellings. At the time that the Heritage Network was commissioned to undertake the recording, both buildings had been stripped out internally.

1.3 The aim of the building recording has been to make a record of the two school buildings in their present condition, to collate the client's own photographs and drawings to create a record of the building as it was before the start of conversion works, and to undertake additional research, as necessary, to place the findings in their local and regional archaeological and historical context.

1.4 The full archive for the project will be deposited with the Hertford Museum in order to preserve a record of the buildings in their present form. It includes copies of the architect's plans, original medium-format black and white photographic negatives and contact sheets, and digital images.

2. Building record

SITE DESCRIPTION

2.1 The site is located on the south side of The Street, which forms a hollow way at this point, running east-west. The former school buildings sit on two separate levels well above the road, on ground which rises to the east-southeast (Figure 2).

2.2 Building 1 occupies the lower site at the west end of the plot, with an open tarmac surfaced yard to its west. A pathway leads along the north frontage to a short flight of steps rising to the upper site and Building 2. A tarmac surfaced playground sits behind Building 2.

BUILDING 1

General Description

2.3 This is a gabled structure aligned east-west (Figure 3) and built of red brick in Flemish bond with white brick dressings to the quoins, the gable head, and the window and door openings. It has a full-height gabled extension in the centre of the northern elevation, flanked by two half-height extensions (Plates 1 & 2). The main building has a steep pitched roof, and the half-height extensions have cat-slide roofs, all covered with slate.

2.4 A twin-flue chimney aligned east-west occupies the angle between the main building and the northern extension. The breast, which is dressed in white bricks laid in a pattern of long and short work, has a cornice formed of simple brick offsets, surmounted by diagonally set stacks which appear to have been renewed (Plate 1).

2.5 A further twin-flue chimney occupies the middle of the eastern end of the northern elevation. It exhibits similar decoration but the breast is hipped above the level of the eaves (Plate 2).

2.6 A white-painted belfry with louvred openings is located on the roof at the junction between Classrooms 1 and 2.

Western Exterior Elevation

2.7 The western exterior elevation exhibits decorative long and short quoins in white bricks, laid flush in blocks three bricks high (Plate 3). At the base of the wall is a chamfered string-course, also in white bricks. The gable springs from a moulded limestone corbel topped by a chamfered block of limestone, the northern pair having been renewed. The coping to the gable is in limestone resting on a four brick high band of white bricks, laid to follow the roof line.

2.8 Below the ridge, a tall and narrow vent can be seen. The lintel is in limestone with the date 1868 carved in relief, but the opening is otherwise dressed in white bricks. It is flanked by two circular tie-rod plates.

2.9 Below this is a large pointed arched window opening, the window, which may be a later replacement, having wooden intersecting arched glazing bars in three sections recalling tracery.

The opening has been remodelled to create a glazed doorway below the window. The opening is dressed with chamfered white bricks which copy the long and short work of the quoins. The remodelled lower half of the opening continues this pattern.

Northern Exterior Elevation

2.10 The gable end of the central extension is built in similar fashion to the western gable end, with the exception that the window is square headed, and divided into six panels, each formed of small decorative panes in elongated hexagon and diamond pattern (Plate 4).

2.11 A half-height extension to the west forms a vestibule which exhibits similar decorative long and short work quoins, and limestone corbel and coping. The keying of the decorative brickwork in the angle with the central extension suggests a contemporary date for their construction. A window in its northern elevation is a recent replacement, and a screen wall to the west of the extension is finished with bullnose bricks suggesting a 1940s date for its construction.

2.12 Between the western vestibule and the screen wall is a narrow square-headed window divided into two panels, having similar small decorative panes to those found in the central extension.

2.13 The half-height extension to the east is a mirror of that on the west, with the exception that the window in the northern elevation is original, and the decorative brickwork in the angle with the central extension is only found on the vestibule, suggesting a later date for its construction.

2.14 A flat-roofed lean-to extension straddles the chimney to the east of the eastern vestibule. It is built of fletton bricks. A concrete roof and the use of bullnose bricks for the quoins suggest a 1940s date for its construction.

Eastern Exterior Elevation

2.15 The eastern gable end is a mirror of the western gable end, reflecting what this would have looked like before it was remodelled. The window may be a later replacement. The lintel to the vent beneath the ridge is in white brick rather than the limestone block seen on the west (Plate 5).

Southern Exterior Elevation

2.16 The southern elevation has three square-headed window openings, all the windows being later replacements. The eastern window opening has been remodelled to accommodate the construction of a flat-roofed lavatory block in the middle of the elevation in the 1960s or '70s.

Interior Classroom 1

2.17 The western classroom is an open hall, originally panelled to 1.5m (5') in height. The western elevation has a large pointed arched window opening which has later been remodelled to create a glazed entrance way of the same width (Plate 6).

2.18 The eastern elevation has a blocked pointed arched opening which is likely to form the site of an earlier window similar to that found in the western elevation. An doorway into Classroom 2 has been cut in the northern half of this elevation. The lintels are wood, suggesting an earlier twentieth century date (Plate 7).

2.19 The northern elevation has a tall narrow square-headed window at either end, each divided into two panels, and each formed of small decorative panes in elongated hexagon and diamond pattern. There is a chimney breast in the middle of the elevation, flanked by two doorways, each having a pointed four-centred relieving arch. In front of the chimney breast, a concrete setting formerly supported a heating boiler which has since been removed (Plate 9).

2.20 There are three windows along the southern elevation, each of 2 lights. The top light of the western two windows is hinged at the base and pivots on a geared rail. The 2 lights of the eastern window are side by side, the opening having been remodelled to accommodate the construction of a lavatory block in the 1960s or '70s. All these windows appear to be replacements, probably contemporary with the extension. At the far eastern end of the elevation, a doorway has been inserted to give access to the lavatory block.

2.21 The ceiling has exposed rafters with lath and plaster in between. The principal rafters are supported on stop chamfered posts which spring from moulded stone corbels set into the wall. The principal rafters are also stop chamfered. A false ceiling has been inserted half way up the rafters.

2.22 The western doorway in the northern elevation of Classroom 1 gives access to the former western vestibule, last used as a lavatory, with evidence of a blocked doorway on the west, and with a remodelled window on the north.

2.23 The eastern doorway in the northern elevation of Classroom 1 gives access to a smaller classroom open to the roof, most recently used as a kitchen. A chimney breast is set into the angle between the western and southern elevations. A rectangular window divided into six panels, all but two later replacements formed of small decorative panes in elongated hexagon and diamond pattern, is set into the northern elevation. A doorway has been cut through to the western vestibule, with a substantial concrete lintel and jambs finished with bull nosed bricks. It is likely to date to the 1940s. A further doorway has been cut through to an eastern vestibule, but the square jambs and the wooden lintels suggest an earlier twentieth century date.

Interior Classroom 2

2.24 The eastern classroom is similar to Classroom 1 but not as long. The eastern elevation has a large pointed arched window, having wooden intersecting arched glazing bars in three sections recalling tracery. This is the mirror of the window in the western elevation of Classroom 1, and may be the original window which formerly occupied the blocked opening in its eastern elevation.

2.25 The northern elevation has a chimney breast in the middle. A tall rectangular window of four panels, with similar small decorative panes to those noted elsewhere, flanks it to the east. At the west end of the elevation, a doorway with a flat curved relieving arch gives onto a vestibule.

The vestibule has a door giving access to the yard in its eastern elevation, and is a mirror of the western vestibule noted above. The tall two panelled window at the east end of Classroom 1, which formerly looked on to the yard, now looks into the eastern vestibule.

2.26 A new doorway has been cut through the southern elevation at its western end to give access to the later lavatory extension mentioned above.

2.27 The eastern elevation mirrors the blocked window opening noted in Classroom 1.

BUILDING 2

General Description

2.28 This is a dual-purpose building aligned east-west, with the western half principally occupied by a classroom, and the eastern half occupied by the master's house (Figure 4). The style is largely similar to that found in Building 1.

2.29 The classroom is a gabled structure aligned north-south with a nearly full-height gabled extension occupying the southern half of the western elevation, and a half-height extension with a cat-slide roof occupying the northern half of the same elevation (Plate 10).

2.30 A twin-flue chimney aligned north-south occupies the angle between the classroom and the western extension. The breast, which is dressed in white bricks laid in a pattern of long and short work, has a cornice formed of simple brick offsets, surmounted by diagonally set stacks.

2.31 A similar chimney cuts through the ridge of the roof of the master's house, where it joins the classroom, and a further chimney serves the southern extension of the master's house at its junction with the classroom (Plate 11).

2.32 The master's house forms a two-storey extension, originally self-contained, to the eastern elevation.

Western Exterior Elevation

2.33 The gable end of the western extension is broadly similar in style and construction to that seen elsewhere, with the exception that the window in the large, pointed arched opening is two panes wide and subdivided by wooden glazing bars in a Y-formation, which recall tracery, with a roundel set in the crook of the Y (Plate 10).

2.34 A half-height extension to the north forms a vestibule which exhibits similar decorative long and short work quoins, and has a square window set in its western face.

Northern Exterior Elevation

2.35 The northern gable end of the classroom is broadly similar in style and construction to that seen elsewhere, with the exception that the window in the large, pointed arched opening has

wooden glazing bars forming three arched sections, with two roundels set in the crooks formed by the heads of the adjacent sections.

2.36 To the east of this is the front elevation of the master's house, having similar decorative quoins, window and door dressings, and chamfered string course to those seen elsewhere (Plate 12). In the centre of the ground floor is the front door of four panels, the upper two glazed, with a stone threshold, and an iron boot scraper set in the ground to the left (Plate 13). The doorway is flanked by two window openings, each having a shallow segmental head and stop-chamfered jambs. The wooden window frames are of three lights with a central side-hung casement. The upper storey has three window openings in line with the lower openings, these being square headed. The window frames are of two lights with a single side-hung casement.

Eastern Exterior Elevation

2.37 The eastern elevation of the master's house has a canted bay window on the ground floor, with a slate roof (Plate 14). The window openings have square heads, and the jambs are chamfered and in white brick. The middle window frame is of two lights with a single side-hung casement. The side windows are of single lights. The upper storey has a single central window opening with a shallow segmental head, cut away in the middle, and stop-chamfered jambs. The window frame is of two lights with a single side-hung casement.

Southern Exterior Elevation

2.38 The western extension has a doorway set into the eastern end of the southern elevation. This has a shallow segmental head and decorated chamfered jambs as noticed elsewhere.

2.39 The southern gable end of the classroom is the mirror of the northern gable end, with the exception that the lower half of the window has been remodelled to accommodate a flat-roofed brick built lavatory block, of 1960s or '70s date, which has been added to this elevation (Plate 11).

2.40 At the western end of the master's house, a two-storey gabled extension can be seen, with a central window in the upper storey in similar style to that in the upper storey of the eastern elevation (Plate 11). The extension may be original but the quoins, which are, once again, decorated in white brick, use long and short work of single brick thickness rather than the three brick thickness seen elsewhere. This suggests a later date for this extension, and different craftsmen. The presence of a chimney serving this area, which appears to be contemporary with the original build, suggests that the two storey extension may replace an earlier single-storey structure. A single-storey pitched roofed outhouse extends southwards from this extension. It has been extensively altered but may have, at its core, a former fuel store and privy for the master's house.

2.41 A two-storey flat roofed extension has been added on the eastern side of this extension. It is built in red brick but without decoration. A further single flat-roofed storey extension has been added on its east. Both structures appear to date either to the 1930s or the 1950s.

Interior: Ante-Room

2.42 This is a small classroom, most recently used as an office. There is a pointed arched window in the western elevation (described above) with an opening louvred vent above (Plate 15). The entrance door is in the southern elevation. There is a doorway through to the adjacent classroom at the southern end of the eastern elevation, with a shallow curved relieving arch over. A small rectangular opening, approximately 0.30m (1') wide by 0.90m (3') high, in the middle of the upper half of the eastern elevation. A chimney breast occupies the angle between the northern and eastern elevations with a chamfered stone chimney piece.

2.43 There is no panelling but the plain skirting board is approximately 0.15m (6") in height.

2.44 The ceiling is open to the rafters which are externally boarded. There is a central truss with curving struts and a clasped ridge.

Interior: Classroom

2.45 This room, also, is unpanelled but with a plain skirting board. The northern elevation has a pointed arched window (described above) with an opening louvred vent above.

2.46 The western elevation has a chimney breast in the centre with a stone chamfered and shallow headed chimney piece. Set in front of the chimney breast, a concrete setting supported a later oil fired furnace which has since been removed. To the north of the chimney breast, a doorway leads to a small vestibule with a doorway leading outside to the north. To the south of the chimney breast at the southern end of the elevation, a doorway leads to the ante-room.

2.47 The southern elevation is similar to the northern elevation, with the exception of the window. This has been remodelled and a doorway has been inserted below to give access to a modern toilet block.

2.48 The eastern elevation has a modern doorway inserted at its northern end which gives access to the master's house.

2.49 The ceiling is similar to that of the ante-room, with the exception that the trusses have a king post in addition to curving struts. There are three trusses in all, beneath each of which a round section tie-bar is suspended (Plate 16).

Interior: Master's House

2.50 The principal entrance to the master's house is through a door in the centre of the northern elevation. This gives onto a hall with doorways left and right. A staircase runs up the left hand wall adjacent to the left-hand doorway.

2.51 Through the left-hand doorway there is a living room with a bay in the eastern elevation and a chimney breast, now blocked, in the southern elevation. There is a further window in the northern elevation of 3 lights with a curved head.

2.52 The right-hand doorway leads into a dining room with a window in the northern elevation, similar to that seen in the living room. The western elevation has a chimney breast in the centre. To the right of the chimney breast there is a new opening which leads into the classroom. A doorway at the eastern end of the southern elevation leads into a kitchen and pantry. This has a doorway in the middle of the southern elevation leading into an extension formed from the former outhouses.

2.53 Upstairs a modern extension provides a bathroom at the top of the stairs on the left. There are three bedrooms, each with its own chimney breast. The fireplace in the north-east bedroom survives in situ (Plate 17). There is a further grate, removed from elsewhere also stored in the room.

3. Discussion

3.1 The school log books record that the former Girls' School was opened in 1868 on a site owned by local benefactor, Thomas Jenyns, after the former schoolroom in nearby Greenhill House fell into a ruinous condition (www.jenyns.herts.sch.uk). The building comprised a small vestibule in the north-west corner leading into the main classroom. A door from the main classroom led to a smaller classroom to the north.

3.2 Following the Education Act of 1870, it was decided to replace the former Boys' School in Church End, and to provide a new Infants' School, on the Girls' School site. A new building, accommodating the Boys' School, with two classrooms, and a house for the schoolmaster, was built to the east of the Girls' School and completed in 1875. The Infants' School was added to the east end of the Girls' School building, and was completed in 1877 (*ibid.*). The original schoolroom was galleried (fitted with tiered seating) but no trace of this now remains. A parallel for this, dating to 1853, can be found at the British Schools Museum in Hitchin.

3.3 It is apparent, from the bricking up of the eastern window of Classroom 1 and the blocking of the tall window at the eastern end of its north elevation, that the extension of the Girls' School was not foreseen when the original building was constructed.

3.4 Structural changes to the buildings since that time have been relatively minor, and include: the knocking through of doorways between Classroom 1 and Classroom 2, and between the eastern vestibule and the northern extension in Building 1, in the early 20th century; some small additions to the northern elevation, and the knocking through of a doorway between the western vestibule and the northern extension of Building 1 in the 1940s; and the construction of toilet blocks against the southern elevations of Buildings 1 and 2, and the remodelling of adjacent windows, in the 1960s or '70s. The master's house has been extended at least twice: once to provide an extra bedroom facing south, possibly around the turn of the 20th century, and later to extend the kitchen and provide a first floor bathroom, possibly in the 1930s.

3.5 The buildings have also seen changes in function over time, notably as a result of the introduction of mixed education, which brought to an end the separation between the Boys' and Girls' schools. The change of use of the master's house from living to working accommodation is relatively recent.

Conclusion

3.6 The buildings of the former Jenyns School form a typical group of school buildings dating to the second half of the 19th century, including separate facilities for girls, boys and infants, and a self-contained house for the schoolmaster and his family. The buildings survive in a relatively unspoilt form.

3.7 The use of white bricks for the decoration and enhancement of the gable, quoins, and window and door openings is notable, as is the surviving decorative glazing to the northern windows of Building 1, and the gothic style of the windows to the main classrooms.

4. Sources Consulted

ARCHIVES

Hertfordshire Archive and Local Studies (HALS)

BIBLIOGRAPHY

Brown, N. and Glazebrook, J. (eds.) 2000. *Research and Archaeology: a framework for the Eastern Counties, 2. Research Agenda and Strategy*. East Anglian Archaeology Occasional Paper No.8

Brunskill, R.W., 1997. *Brick Building in Britain*. Victor Gollancz

Glazebrook, J. (ed.) 1997. *Research and Archaeology: a framework for the Eastern Counties, 1. Resource Management*. East Anglian Archaeology Occasional Paper No.3

Hillelson, D., 2005, *Former Jenyns School Braughing, Herts: Project Design*. Heritage Network.

Lever, J., & Harris, J., 1993, *Illustrated Dictionary of Architecture, 800-1914*. Faber

RCHME, 1996. *Recording Historic Buildings: a descriptive specification* (3rd edition). Royal Commission on the Historical Monuments of England

WEBSITES

www.jenyns.herts.sch.uk (Jenyns School, Braughing)

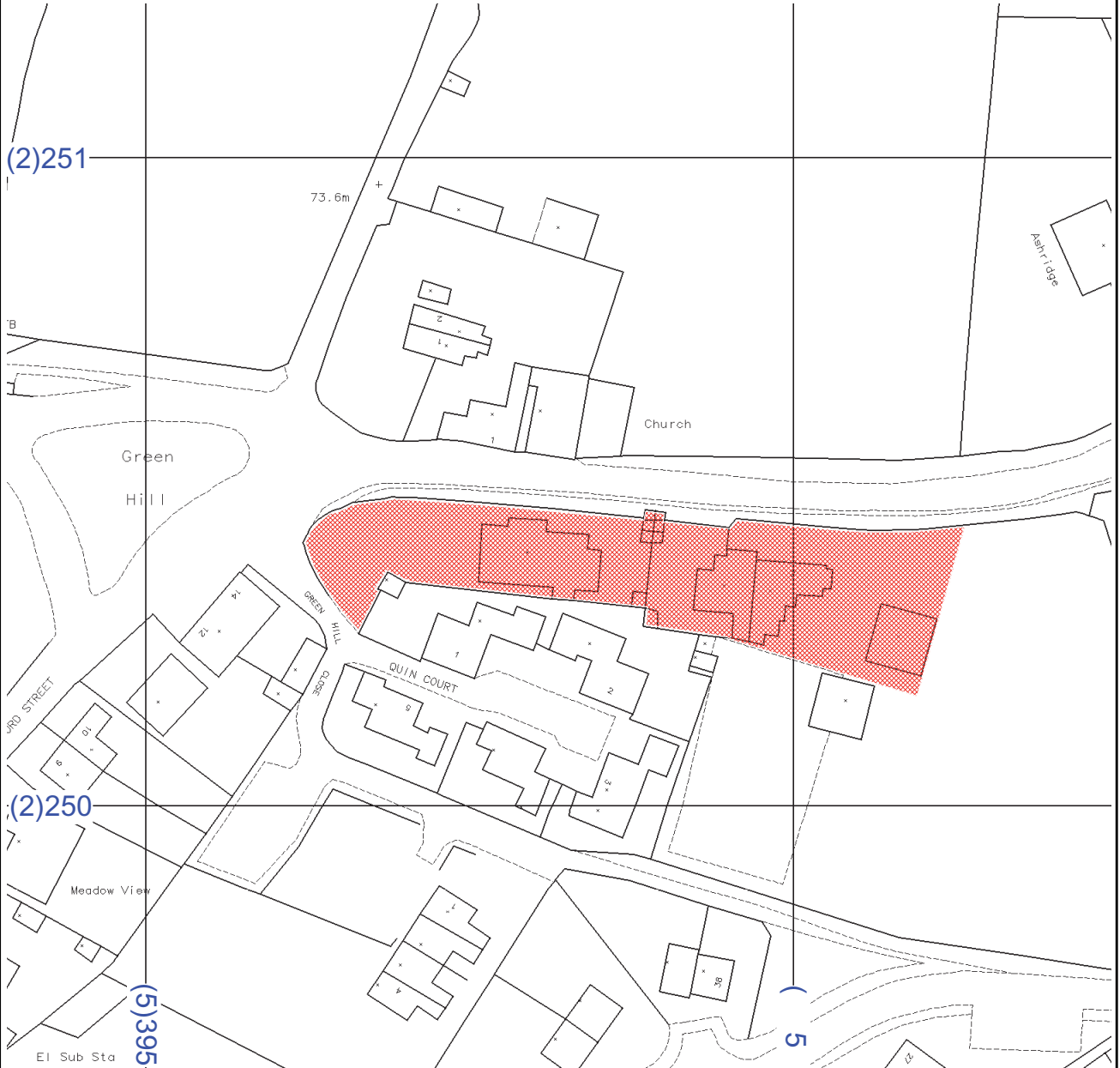
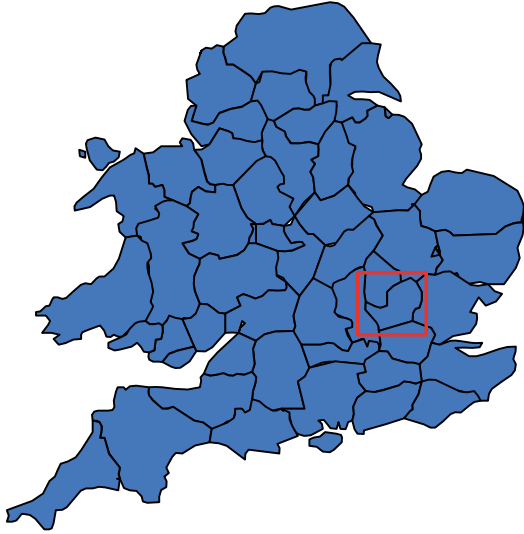
5. Illustrations

Figure 1	Site location
Figure 2	Site layout
Figure 3	Building 1: plan
Figure 4	Building 2: plan
Plate 1	Building 1, northern and western elevations
Plate 2	Building 1, northern and eastern elevations
Plate 3	Building 1, western gable end
Plate 4	Building 1, central extension
Plate 5	Building 1, eastern gable end
Plate 6	Building 1, Classroom 1, western elevation
Plate 7	Building 1, Classroom 1, eastern elevation
Plate 8	Building 1, Classroom 1, northern elevation
Plate 9	Building 1, Classroom 1, southern elevation
Plate 10	Building 2, western elevation
Plate 11	Building 2, southern elevation
Plate 12	Building 2, master's house, northern elevation
Plate 13	Master's house, front door
Plate 14	Master's house, western elevation
Plate 15	Building 2, ante-room window
Plate 16	Building 2, Classroom ceiling
Plate 17	Master's house, fireplace, east front bedroom

THE HERITAGE NETWORK LTD

Former Jenyns School, Braughing

HN556



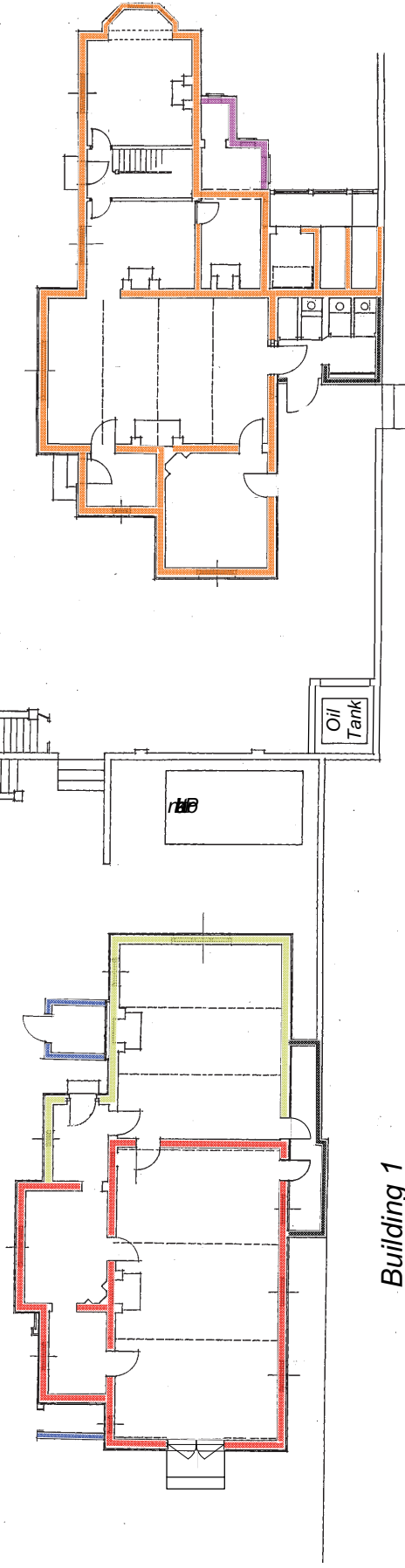
Site Location

Scale 1:1000

Reproduced from the Ordnance Survey with the permission of the controller of Her Majesty's Stationery Office, Licence no.AL100014861

Figure 1

The Street

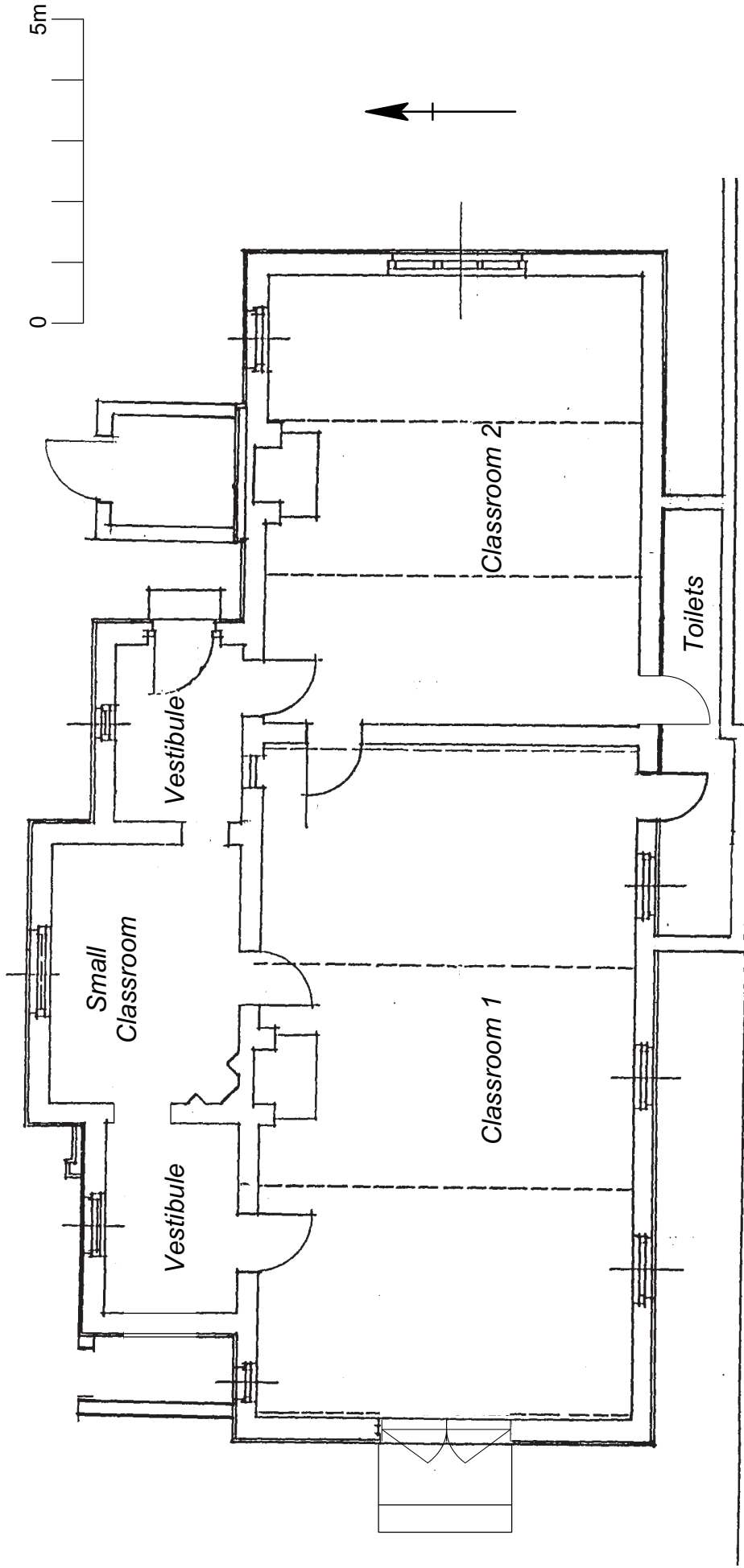


KEY to Phasing

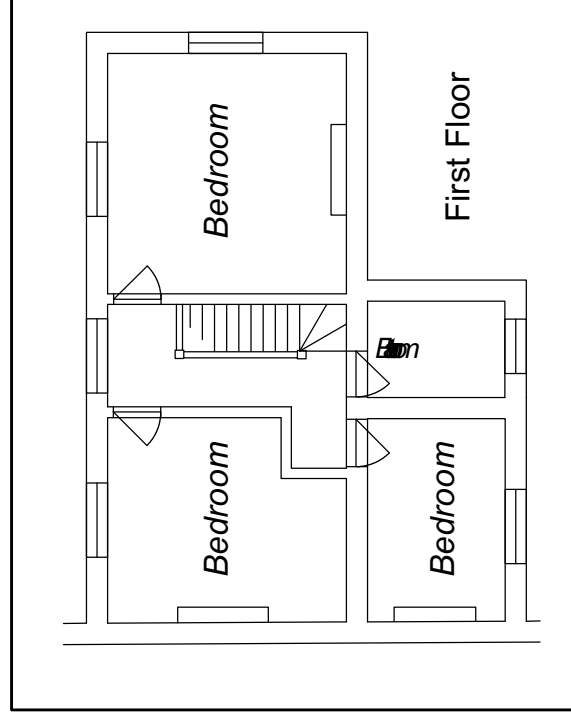
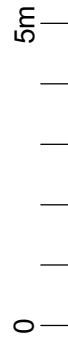
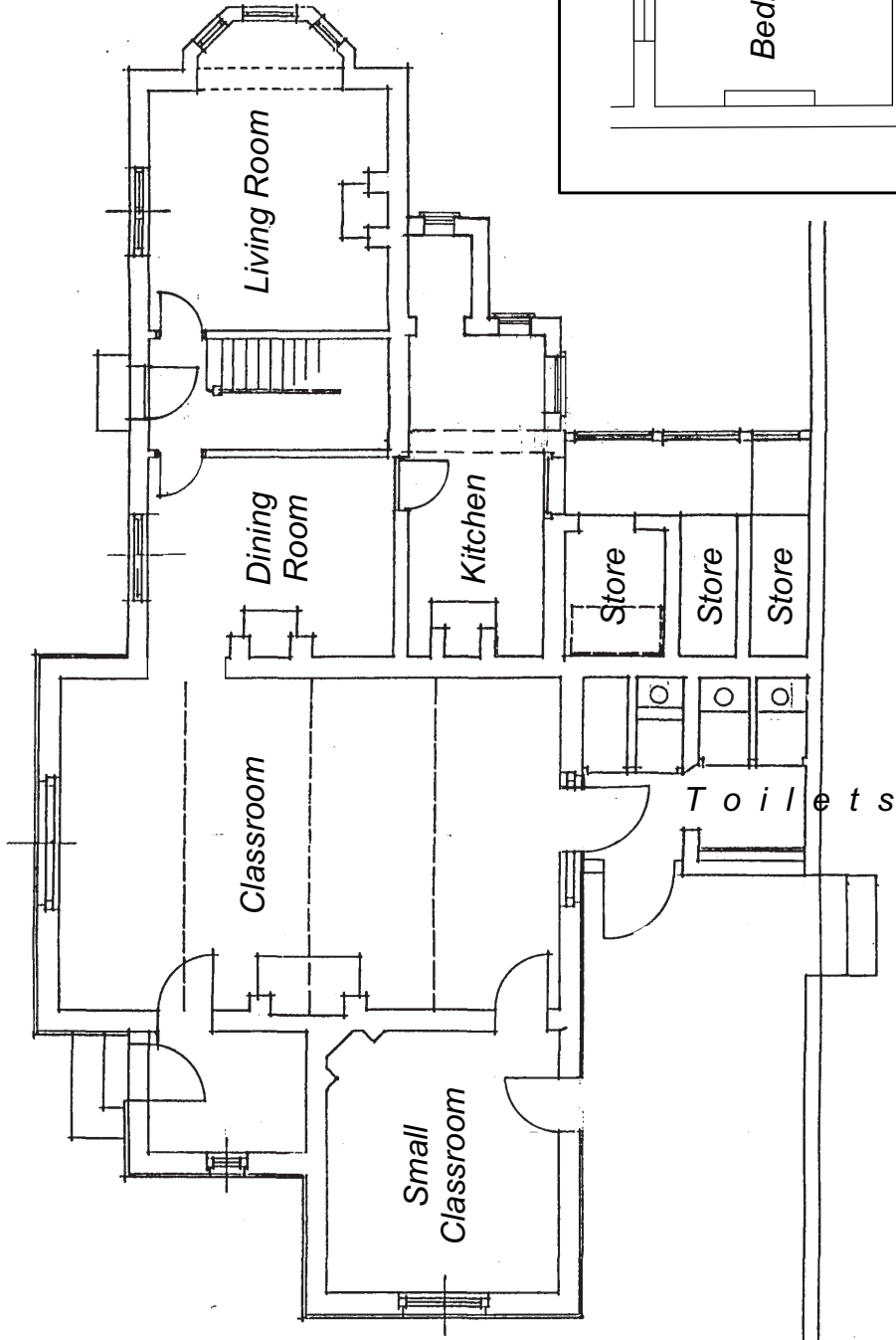
- 1868
- 1875
- 1877
- 1930
- 1940
- 1960+

Building 2

Building 1



Building 1



Building 2



Plate 1: Building 1, northern and western elevations



Plate 2: Building 1, northern and eastern elevations



Plate 3: Building 1, western gable end



Plate 4: Building 1, central extension



Plate 5: Building 1, eastern gable end

THE HERITAGE NETWORK LTD

Former Jenyns School, Braughing

HN556



Plate 6: Building 1, Classroom 1, western elevation

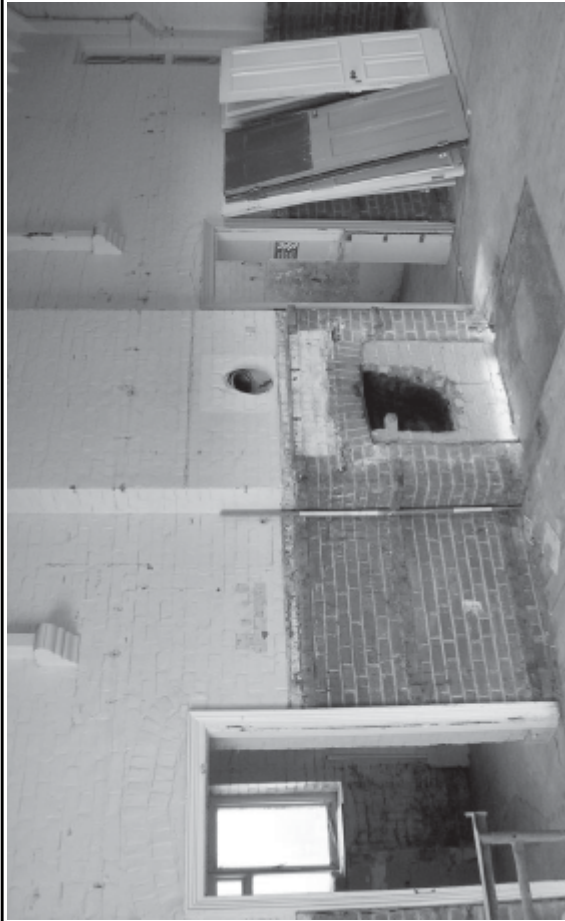


Plate 8: Building 1, Classroom 1, northern elevation

Plate 7: Building 1, Classroom 2, eastern elevation



Plate 9: Building 1, Classroom 1, southern elevation



Plate 10: Building 2, western elevation



Plate 11: Building 2, southern elevation



Plate 12: Building 2, master's house, northern elevation



Plate 13: Master's house, front door



Plate 14: Master's house, western elevation



Plate 15: Building 2, ante-room window



Plate 17: Master's house, fireplace, east front bedroom



Plate 16: Building 2, classroom ceiling

Appendix 1

Photographic Log

Digital Ref.	B/W Frame	Description	Facing
HN556-001	1-1	Building 1, classroom 1, eastern elevation	East
HN556-002	1-2	Building 1, classroom 1, eastern elevation	East
HN556-003	1-3	Building 1, classroom 1, southern elevation	South East
HN556-004	-	Building 1, classroom 1, southern elevation	South East
HN556-005	1-4	Building 1, classroom 1, northern elevation	North East
HN556-006	1-5	Building 1, classroom 1, northern elevation	North West
HN556-007	1-6	Building 1, classroom 1, southern elevation	South West
HN556-008	-	Building 1, classroom 1, southern elevation	South West
HN556-009	1-7	Building 1, classroom 1, western elevation	West
HN556-010	-	Building 1, classroom 1, western elevation	West
HN556-011	1-8	Building 1, classroom 1, northern elevation, NE window detail	North
HN556-012	1-9	Building 1, classroom 1, northern elevation, NW door detail	North
HN556-013	-	Building 1, classroom 1, northern elevation, NW door detail	North
HN556-014	1-10	Building 1, classroom 2, northern elevation	North East
HN556-015	-	Building 1, classroom 2, northern elevation	North East
HN556-016	1-11	Building 1, classroom 2, northern elevation	North West
HN556-017	1-12	Building 1, classroom 2, eastern elevation	East
HN556-018	1-13	Building 2, office, western elevation	West
HN556-019	-	Building 2, office, western elevation	West
HN556-020	1-14	Building 2, office, western elevation	West
HN556-021	-	Building 2, office, western elevation	West
HN556-022	1-15	Building 2, office, NE corner chimney	North East
HN556-023	2-1	Building 2, classroom, northern elevation bottom	North
HN556-024	-	Building 2, classroom, northern elevation bottom	North
HN556-025	2-2	Building 2, classroom, northern elevation top	North
HN556-026	-	Building 2, classroom, northern elevation top	North
HN556-027	2-3	Building 2, classroom, western elevation fireplace	West
HN556-028	2-4	Building 2, classroom, western elevation	South West
HN556-029	-	Master's house, NE bedroom, southern elevation fireplace	South
HN556-030	-	Master's house, NE bedroom, southern elevation fireplace	South
HN556-031	-	Master's house, NE bedroom, southern elevation fireplace detail	South
HN556-032	-	Master's house, NE bedroom, southern elevation fireplace detail	South
HN556-033	-	Master's house, NE bedroom, additional grate flue closed	North
HN556-034	-	Master's house, NE bedroom, additional grate flue open	North
HN556-035	2-5, 2-6	Buildings 1 and 2, exterior	South East
HN556-036	2-7	Building 1, northern elevation	South
HN556-037	2-8	Building 1, northern elevation	South
HN556-038	2-9	Building 1, northern elevation east end	South
HN556-039	2-10	Building 1, northern and eastern elevations	South West
HN556-040	2-11	Building 2, western and northern elevations	South East
HN556-041	2-12	Building 2, western and northern elevations	South East
HN556-042	-	Building 2, western and northern elevations	South East
HN556-043	2-13	Buildings 1 and 2, exterior general shot	South East
HN556-044	2-14	Building 1, northern elevation	South East
HN556-045	2-15	Building 1, western elevation	East

Digital Ref.	B/W Frame	Description	Facing
HN556-046	2-1	Building 1, eastern elevation	South West
HN556-047	2-2	Building 2, western elevation	South East
HN556-048	2-3	Building 2, southern elevation	North
HN556-049	2-4	Building 1, E elevation; Building 2, S elevation, W end	North West
HN556-050	2-5	Building 2 southern elevation	North West
HN556-051	2-6	Building 2 eastern elevation masters house	West
HN556-052	2-7	Building 2 northern elevation masters house	South West
HN556-053	2-8	Building 2 northern elevation northern gable, school room	South west
HN556-054	2-9	Master's house, ground floor window detail	South
HN556-055	2-10	Master's house, door detail	South
HN556-056	2-11	Building 1, eastern elevation	South West
HN556-057	2-13	Building 1, southern elevation west end	ENE
HN556-058	2-14	Building 1, western elevation, general setting	East
HN556-059	2-15	Former Jenyns School, general setting	ESE

Appendix 2

Client's Digital Photographic Log

Frame No.	Description	Facing
IMG_0686	Building 1, north-west elevation	SE
IMG_0687	Building 1, west elevation	SE
IMG_0688	Building 1, South-west corner	E
IMG_0689	Building 1, west elevation window detail	E
IMG_0690	Building 1, west elevation entrance door detail	E
IMG_0691	Building 1, north-west corner chimney detail	SE
IMG_0692	Building 1, North elevation window detail	SW
IMG_0693	Building 1, exterior	SW
IMG_0694	Building 1, east elevation	SW
IMG_0695	Building 1, north-east corner	SW
IMG_0696	Building 1, south-east corner	NW
IMG_0697	Building 1, Part of south elevation and side passage	E
IMG_0698	Building 2, west elevation	NE
IMG_0699	Building 2, south elevation and modern toilet block	E
IMG_0700	Building 2, northern corner of west elevation	E
IMG_0701	Building 2, northern corner of west elevation gable detail	E
IMG_0702	Building 2, chimney detail	SE
IMG_0703	Building 1, Exterior	W
IMG_0704	Master's house, north elevation	SW
IMG_0705	Master's house, north elevation	SW
IMG_0706	Master's house, east elevation	S
IMG_0707	Master's house, east elevation	W
IMG_0708	Master's house, east elevation	W
IMG_0709	Building 2 , master's house, chimney detail	SE
P1010001	Building 1, west elevation	E
P1010002	Building 1, southern corner of west elevation	E
P1010003	Building 1, west elevation	NE
P1010004	Building 1, west elevation window detail	E
P1010005	Building 1, west elevation entrance door detail	E
P1010006	Building 1, northern corner of west elevation gable detail	E
P1010007	Building 1, western corner of north elevation	SE
P1010008	Building 1, chimney detail	SE
P1010009	Building 1, north elevation west end	SE
P1010010	Building 1, north west corner north elevation gable detail	S
P1010011	Building 1, north elevation gable detail	SE
P1010012	Building 1, north elevation window detail	S
P1010013	Building 1, north elevation brickwork detail	W
P1010014	Building 1, western end roof detail	SE
P1010015	Building 1, north elevation eastern end window detail	SE
P1010016	Building 1, north elevation door detail	S
P1010017	Building 1, north elevation chimney detail	S
P1010018	Building 1, belfry detail	SW
P1010019	Building 1, belfry detail	W
P1010020	Building 1, north elevation	SW
P1010021	Building 1, north elevation eastern end, window detail	SW

Frame No.	Description	Facing
P1010022	Building 1, north elevation, eastern end window detail	SW
P1010023	Building 1, east elevation	SW
P1010024	Building 1, east elevation	SW
P1010025	Building 1, east elevation	SW
P1010026	Building 1, north elevation	W
P1010027	Building 1, north elevation	W
P1010028	Building 1, east elevation window detail, bottom	W
P1010029	Building 1, east elevation window detail, top	W
P1010030	Southern boundary wall	S
P1010031	Southern boundary wall, Building 1 south elevation	W
P1010032	Southern boundary wall	S
P1010033	Steps to upper level	E
P1010034	Playground east of building 1	NE
P1010035	Building 1, west elevation extension detail	E
P1010036	Southern boundary wall west of Building 1	S
P1010037	Building 1, classroom 1 east elevation	E
P1010038	Building 1, classroom 1 west elevation	W
P1010039	Building 1, classroom 1 south elevation eastern end	S
P1010040	Building 1, classroom 1 south elevation eastern end door detail	SE
P1010041	Building 1, classroom 1 south elevation window detail	S
P1010042	Building 1, classroom 1 south elevation eastern end	SW
P1010043	Building 1, classroom 1 north elevation fireplace detail	NE
P1010044	Building 1, classroom 1 north elevation western end	NW
P1010045	Building 1, western vestibule east elevation doorway into kitchen	NE
P1010046	Uncertain	NW
P1010047	Building 1, kitchen east elevation, top	E
P1010048	Building 1, kitchen east elevation bottom	E
P1010049	Building 1, kitchen south west corner	NW
P1010050	Building 1, kitchen west elevation top	W
P1010051	Building 1, kitchen west elevation bottom	W
P1010052	Building 1, kitchen north elevation window detail	N
P1010053	Building 1, classroom 1 north elevation eastern end window detail	NE
P1010054	Building 1, classroom 1 north east corner bottom	NE
P1010055	Building 1, classroom 2 east elevation top	E
P1010056	Building 1, classroom 2 east elevation bottom	E
P1010057	Building 1, classroom 2 south elevation eastern end	SE
P1010058	Building 1, classroom 2 south elevation western end, top	S
P1010059	Building 1, classroom 2 south elevation western end, bottom	S
P1010060	Building 1, classroom 2 north elevation eastern end	NE
P1010061	Building 1, classroom 2 north elevation western end	N
P1010062	Building 1, classroom 2 east elevation	NE
P1010063	Building 1, classroom 2 east elevation	NE
P1010064	Building 1, classroom 2 ceiling	E
P1010065	Building 1, classroom 2 vestibule north elevation	N
P1010066	Building 1, classroom 2 vestibule west elevation	W
P1010067	Building 1, classroom 1 vestibule, south elevation, top	W
P1010068	Building 1, classroom 2 vestibule, east elevation door detail	E
P1010069	Building 1, toilet extension	E
P1010070	Building 1, toilet extension	W
P1010071	Building 1, north elevation	E

Frame No.	Description	Facing
P1010072	Steps to upper level	E
P1010073	Building 1, east elevation top	W
P1010074	Playground south of master's house	S
P1010075	Playground south of master's house	SE
P1010076	Playground south of master's house, mobile classroom 1	E
P1010077	Playground south of master's house, mobile classroom 1	E
P1010078	Playground south of master's house, mobile classrooms 1 and 2	NE
P1010079	Building 2, south elevation	N
CIMG1220	Building 2, classroom north elevation top	N
CIMG1221	Building 2, classroom north elevation bottom	N
CIMG1222	Building 2, classroom north elevation western end top	NW
CIMG1223	Building 2, north elevation western end bottom	NW
CIMG1224	Building 2, classroom east elevation doorway to masters house	NE
CIMG1225	Building 2, classroom south elevation	S
CIMG1226	Building 2, classroom south elevation western end top	S
CIMG1227	Building 2, classroom west elevation, doorway to anteroom	SW
CIMG1228	Building 2, anteroom north east corner, chimney top	NE
CIMG1229	Building 2, anteroom west elevation	NW
CIMG1230	Building 2, anteroom south elevation	SE
CIMG1231	Building 2, vestibule west elevation	W
CIMG1232	Building 2, vestibule north west corner	NW
CIMG1233	Master's house, dining room west elevation, north end	NW
CIMG1234	Building 2, master's house dining room north window detail	NW
CIMG1235	Building 2, master's house hallway	E
CIMG1236	Building 2, master's house living room west window detail	E
CIMG1237	Building 2, master's house west elevation	W
CIMG1238	Building 2, master's house north west corner brickwork detail	SW
CIMG1239	Building 2, master's house north west corner brickwork detail	SW
CIMG1240	Building 2, master's house north elevation	SW
CIMG1241	Building 2, master's house north elevation front door detail	S
CIMG1242	Building 2, north elevation	W
CIMG1243	Building 2, north elevation	W
CIMG1244	Building 2, master's house south elevation eastern end	NW
CIMG1245	Building 2, master's house south elevation eastern end	NW
CIMG1246	Building 2, master's house south elevation single story extension	NW
CIMG1247	Building 2, master's house south elevation eastern end bottom	NW
CIMG1248	Building 2, south elevation	N
CIMG1249	Building 2, south elevation	N
CIMG1250	Building 2, south elevation classroom window detail	N
CIMG1251	Building 2, south elevation classroom western gable detail	N
CIMG1252	Building 2, south elevation master's house, outhouse gable detail	NE
CIMG1253	Building 2, steps at south end of toilet extension	SE
CIMG1254	Building 2, toilet extension	E
CIMG1255	Building 2, anteroom south elevation door detail bottom	NE
CIMG1256	Building 2, anteroom south elevation door detail top	NE
CIMG1257	Building 2, south elevation classroom gable detail	N
CIMG1258	Building 2, anteroom west elevation bottom	E
CIMG1259	Building 2, anteroom west elevation window detail	E
CIMG1260	Building 2, anteroom west elevation top	E
CIMG1261	Building 2, north west corner brickwork detail	E

Frame No.	Description	Facing
CIMG1262	Building 2, north west corner chimney detail	E
CIMG1263	Building 2, north elevation vestibule door.	SE
CIMG1264	Building 2, master's house north east corner	E
CIMG1265	Playground south of master's house	SW
CIMG1266	Building 2, master's house stairs	SE
CIMG1267	Building 2, master's house stairs	S
CIMG1268	Building 2, classroom west elevation boiler detail	SW
CIMG1269	Building 2, classroom west elevation ceiling detail	W
CIMG1270	Building 2, classroom west elevation southern end	SW
CIMG1271	Building 2, classroom, south elevation view into toilet extension	S
CIMG1272	Steps leading to tarmac area surrounding Building 2	SE
CIMG1273	Boundary wall north of Building 1	NE
CIMG1274	Steps leading to northern exit	NE
CIMG1275	Steps leading to northern exit	N
CIMG1276	Steps leading to northern exit	NW
CIMG1277	Building 2, anteroom south elevation gutter detail	N
CIMG1278	Building 2, anteroom south elevation gutter detail	W