

HERITAGE NETWORK

Specialists in Archaeology and the Historic Environment Since 1992



'THE GABLES'
(Service Wing)
Thorpe Road, Peterborough

HN1152

***HISTORIC BUILDING
RECORD***

HERITAGE NETWORK

Registered with the Chartered Institute for Archaeologists

Managing Director: David Hillelson, BA MCIFA

‘THE GABLES’
(Service Wing)
Thorpe Road, Peterborough

Project ref.: HN1152
Planning ref.: 14/00650/LBC

Historic Building Record

Prepared on behalf of Lands Improvement

by

David Hillelson, BA (Hons), MCIFA

Report no.903

January 2015

© The Heritage Network Ltd

11 FURMSTON COURT, LETCHWORTH HERTS. SG6 1UJ
TEL: (01462) 685991 FAX: (01462) 685998

Contents

Summary.....	Page i
Section 1 Introduction.....	Page 1
Section 2 Historic Evidence.....	Page 3
Section 3 Building Record.....	Page 6
Section 4 Discussion.....	Page 8
Section 5 Sources Consulted.....	Page 9
Section 6 Illustrations.....	<i>following</i> Page 10
Appendix OASIS Data Entry.....	Page 11

The cover photograph shows ‘The Gables’ looking south from the former Nurses’ Home

Acknowledgements

The Heritage Network would like to express its thanks to: Paul Jeal and Viktoria Oakley, Lands Improvement; Tim Young, John Rowan & Partners; Gavin Davis and James Farr, WSP; Michael Meenaghan and Chris Bibb, DSM Group; and, Jim Daley, Principal Built Environment Officer, Peterborough City Council, for their co-operation and assistance in the preparation of this report.

Summary

Site name and address:	‘The Gables’, Thorpe Road, Peterborough,		
County:	Cambridgeshire	District:	Peterborough City
Village/town:	Peterborough	Parish:	Peterborough
Planning reference:	14/00650/LBC	NGR:	517980 298804
Client name and address:	Lands Improvement, 2-8 Avenue Charles de Gaulle, L-1653, Luxembourg		
Nature of work:	Demolition	Former use:	NHS
Site Status:	Listed building	Reason for investigation:	Direction of LPA (NPPF)
Position in planning process:	After full determination (as a condition)	Project brief originator:	Local Authority
Site Code:	HN1152	Other reference:	n/a
Organisation:	Heritage Network	Site Director:	David Hillelson
Project type, methods etc...	Building recording	Archive Recipient:	Peterborough Museum
Oasis UID	heritage1-199386	Significant finds:	n/a
Monument types:	Town House		
Physical archive:	n/a		
Previous summaries/reports:	n/a		

Synopsis:

As part of the proposed redevelopment of ‘The Gables’, a listed late Victorian mansion located on the western approaches to Peterborough City Centre, a programme of demolition is to be undertaken, focused on additions and extensions to the building since the 1960s, but including one small single-storey element that forms part of the original structure. Between the 1960s and 2012, ‘The Gables’ formed part of Peterborough District Hospital. In response to a condition on the listed building consent for the demolition works, an historic building record has been made of the elements to be removed focusing on the original single-storey bay.

The later elements are all functional structures of no heritage value in the context of the listed building and its curtilage. They include a detached electricity sub-station, an external lift shaft and its associated motor housing, one two-storey and two single-storey extensions, and a free-standing but linked single-storey block. Their removal aims to restore the original form of ‘The Gables’ and its aesthetic integrity.

The single-storey bay at the east end of the north range of 'The Gables', is shown to be part of the original structure on the Ordnance Survey 25-inch map for 1901. This is identified in the listing description as housing the boot room and larder, and includes a corridor to the south linking the house to a service yard to the east. The bay was remodelled, and the eastern yard and a service block beyond were demolished, with the construction of a 'high dependency unit' after 1988. A 1985 plan identifies the surviving rooms as 'staff room' and 'dirty utility'.

The removal of the 'high dependency unit' effectively makes the single-storey bay redundant and reduces its relevance to the remainder of the house. In this context, its demolition is not considered to represent a major loss to the significance of 'The Gables' as a whole, and the present record represents an acceptable mitigation of its loss.

1. Introduction

1.1 This report has been prepared at the request of *Lands Improvement*, as part of a programme of historic building recording carried out on 'The Gables', Thorpe Road, Peterborough.

1.2 The work has been a requirement of the Listed Building Consent granted by Peterborough City Council (PCC) (ref. 14/00650/LBC), under Sections 7 and 8 of the *Planning (Listed Buildings and Conservation Areas) Act 1990*. The consent covers the removal a number of additions and extensions to the original building, and includes a contemporary two-room single-storey service wing attached to the eastern end of the rear range. Condition 7 of the consent states:

Within three months of the completion of the approved demolition works a written record of the elements to be removed, as described in the 'Method Statement: Historic Building Recording Appendix 2 (Heritage Statement and Mitigation Strategy Doc. 03), shall be submitted to the Local Planning Authority.

1.3 'The Gables' lies on the western side of the former Peterborough District Hospital site (centred on NGR 517960 298800), with its principal access via a tree-lined drive from Thorpe Road (Figure 1). It is Grade II listed (list entry no. 1396281) and was built as a private house in the late 19th century. The building was converted and extended for use as a maternity unit in the 1960s, with a large extension being added to the eastern end, when its use changed to a mental health unit in the 1990s.

1.4 An application for outline planning permission for the redevelopment of the former Peterborough District Hospital site as a whole (ref.14/00536/OUT) was approved by PCC in October 2014. The application included provision for the retention and residential use of 'The Gables', subject to the approval of reserved matters and Listed Building Consent. As part of the preparatory works for the conversion of the building to residential use, the present programme proposes the demolition of the modern extensions to the east end of the south range and to the east of the building, including the original single-storey service wing (formed of two small rooms and a corridor) and an ancillary electricity sub-station to the south, and the removal of the lift shaft and motor housing from the north elevation.

1.5 Mitigation of the identified harm to the significance of a heritage asset is required under paragraph 141 of the *National Planning Policy Framework (NPPF)*, which states that 'local planning authorities should require developers to record and advance understanding of the significance of any heritage assets to be lost (wholly or in part) in a manner proportionate to their importance and the impact, and to make this evidence (and any archive generated) publicly accessible'.

1.6 The present document is intended to meet this requirement, and conform to a Level 3 record, as defined in *Understanding Historic Buildings: A guide to good recording practice* (English Heritage, 2006). It is considered that the record has the potential to contribute to an understanding of the layout and function of late Victorian suburban villas, and the place of 'The Gables' in the westwards expansion of the city of Peterborough in the first quarter of the 20th century. The documentary archives for the project will be deposited with Peterborough Museum.

COMPETENCE

1.7 The Heritage Network is an independent practice specialising in archaeology and the historic environment. Founded in 1992, the company has undertaken a wide variety of commercial investigation and recording projects for clients involved in housing and industrial development, pipeline and road construction, agriculture and landscaping. As a *Registered Organisation*, the company is monitored annually by the Chartered Institute for Archaeologists to ensure that its work meets the highest professional standards.

1.8 Projects are administered and co-ordinated by David Hillelson, the Heritage Network's Managing Director, an established archaeologist and historic buildings specialist with extensive experience of the investigation and recording of heritage assets in both urban and rural environments. He holds an honours degree in archaeology from the University of Durham, and is a Member of the Chartered Institute for Archaeologists. He has been the practice's principal officer since 1992.

1.9 Research projects are managed by Helen Ashworth. She holds a degree in English and History from Middlesex Polytechnic, a Post-graduate Diploma in Librarianship, a Post-graduate Certificate in Field Archaeology from the University of Oxford, and she is an Associate of the Chartered Institute for Archaeologists. She has over thirty years of practical archaeological experience in local government, with the Royal Commission for the Historical Monuments of England, and in private practice.

2. Historic Evidence

2.1 'The Gables' is located on the north side of Thorpe Road, on the western approaches to Peterborough city centre. The building is Grade II listed (List Entry no. 1396281) and is therefore considered to be a heritage asset of special architectural and historic interest. The listing provides a comprehensive description of the building:

House, 1895, designed by John Alfred Gotch, of red brick laid in English bond with limestone dressings. The roof is covered in modern concrete tiles.

Plan: The house is constructed as two parallel ranges with pitched roofs; the south range of seven bays and two storeys, the north of eight bays with two storeys with attics and basement, and a single storey bay to the east.

Exterior: 'The Gables' is built to a Tudor/Jacobean design. The main south elevation presents a symmetrical façade of five bays, but is extended at the east end by a blind sixth bay (which presents its gable end to the east). A gabled entrance bay is flanked by two recessed bays, but the elevation is dominated by two outer gabled bays with two-storey canted bay windows, and by a single-storey decorative central stone porch. The entrance has a moulded round arch flanked by fluted pilasters, with carved spandrels, with an entablature and parapet above surmounted by three pinnacles; the parapets above the canted bays also contain strapwork decoration. Within the smaller central gable is a carved stone plaque with the initial B. All windows have mullions and transoms, the transoms to the ground floor bay windows arched to the canted sides and centre. The outer gables are surmounted by finials and all three have limestone kneelers. Modern single and two-storey extensions have been added to the east end of this elevation, and a disabled ramp, modern steps and railings have been added to the front of the porch.

The west elevation has three, first-floor mullioned and transomed windows, below which are three semi-circular bay windows to the ground floor surmounted by parapets and with decorative leaded windows above the transoms. The north, garden, elevation has four gables with dormer windows; the two smaller central gables have kneelers with volute decoration surmounted by finials. The second gabled bay from the west contains a large three-tier, fifteen-light window; between it and the west gabled bay a large lift shaft has been attached, constructed of corrugated sheeting. Between the first and second gabled bay from the east, a ground-floor window has been enlarged to create an additional door. At the east end, attached to the single-storey service rooms (originally the larder and boot room) is a modern single-storey red brick extension.

Interior: From the porch, double doors open onto a panelled hall, the south-east corner of which is enclosed by modern partitions to create a separate office space; this contains the hall fireplace, of carved wood, partly boarded over, but with fluted pilasters and overmantle with carved cornice. The hall ceiling contains decorative ribbed plasterwork with small pendants, and a wide arch with carved spandrels divides the hall from the stairwell to the north. A doorway to the west of the entrance opens onto the drawing rooms. Its carved architrave includes

four roundels with foliate decoration (a theme which recurs throughout the decorative scheme); the centre of one of these contains two Bs, one reversed, while another bears the date 1895. The door has five fielded panels. The living room has a coffered ceiling, the ribs formed by beams enclosed in decorative plasterwork. The windows consist of one large canted bay and two rounded bays, all set under arches and moulded architraves. The windows contain decorative leading and retain their original furniture. A modern partition with a wide opening divides the room in two. The room to the east of the hall (the morning room) has a similar south-facing canted bay window, a deep moulded cornice and a fireplace with overmantle. Opposite the morning room is the dining room, subdivided by a modern partition; both halves retain a deep decorative plasterwork cornice and dado-height panelling with fielded panels, a section of which has been replaced with plain boarding. The original entrance is the door from the hall, but two modern doors have been inserted. The dining room and morning room are divided by a corridor running east to the kitchen and other service rooms.

An open-well staircase rises from the north side of the hall. The stairs are open string with splat balusters and square newel posts with vase-shaped finials. The stairwell is lit by the three-tier north window, the upper lights of which contain elaborately decorative leadwork, while the ceiling contains moulded plasterwork decoration. A modern glazed screen surrounds the landing. Similar detail to that on the ground floor can be seen in the principal first floor corridors and rooms; this includes joinery in the form of arches in the corridor and around the two south bay windows, as well as architraves, doors, shelving, skirting boards and cornices. Most windows have decorative leadwork and original furniture. Some fireplace surrounds survive, but other fireplaces have been removed altogether. Modern rooms contain no details of interest. The upper part of the service stair at the east end of the corridor is enclosed, while the lower treads have plain stick balusters and newel post. The ground floor service corridor leads into modern extensions to the east and south.

Subsidiary Features: Although the gardens of 'The Gables' now contain a number of modern hospital buildings, the long drive from Thorpe Road to the south survives. This enters the courtyard to the south of the house through a pair of low piers. To the east of the house part of a screen wall containing a brick arched gateway survives.

2.2 The significance of 'The Gables' has been identified in the listing description under the following headings:

- Architectural interest - the house is of special interest for the quality of its design and for the well-considered extensive detail and craftsmanship.
- Architect - J A Gotch was a local Northamptonshire architect with a national reputation, and an authority on Jacobean and Tudor style. Seventeen designated buildings are ascribed to him, including four at Grade I and one at II*.
- Survival - the design, plan form and decorative detail of the exterior survive substantially intact. The most significant elements of the interior plan form also survive

- Interior - the interior contains extensive decorative detail of fine quality and craftsmanship, particularly the principal rooms.
- Historical interest - the house was commissioned by a distinguished local merchant and is illustrative of the wealth of the rising class of late C19 industrialists.

2.3 The listing description notes that 'modern single and two-storey extensions have been added to the east end of [the front] elevation' and that 'the extension to the east seems to have been either remodelled or rebuilt in its present form at some time in the 1990s'. It further notes that 'modern rooms contain no details of interest'.

Cartographic Evidence

2.4 'The Gables' is first shown on the 2nd edition of the Ordnance Survey County Series dated 1901 (Figure 2), the property having been carved from the adjacent 'Westwood House' grounds in the late 19th century. The grounds appear to have been extended to the north between 1901 and 1926, the date of the 3rd edition OS map, with a plot to the east of the entrance drive, being subsequently hived off in the early 1960s to accommodate the Vawser Lodge care home (currently under redevelopment).

2.5 As originally laid out, the property was bounded by a wooded strip on all sides, the house being located in the northern half of the plot, and approached by a tree-lined drive offset to the west (see Figure 2). The drive entered a walled courtyard in front of the house, while a spur branched to the east, giving access to the service wing of the house and a possible stable block/carriage house towards the eastern boundary. Formal gardens, lined and crossed by paths, surrounded the house on the west and north, with a, possibly walled, kitchen garden occupying the north-east corner of the plot. Flanking the drive was open ground with a few trees.

2.6 The layout remained virtually unchanged, apart from the extension of the grounds to the north, until the 1960s, when the property was acquired by the Peterborough District Hospital and the grounds were extensively developed. By the time the hospital closed in 2012, all that remained of the original layout was the house itself with its entrance courtyard and tree-lined drive, and the stable block/carriage house known as Little Gables. The grounds on all sides of the house had been entirely built over, with the exception of one small plot to the immediate north-west of the house, which had been retained as a bowling green (Figure 3).

2.7 As was the case with the grounds, it is likely that the house itself also remained largely unchanged until the 1960s, when it was converted for use as the maternity unit for the newly formed Peterborough District Hospital. The 2nd edition OS map shows the two parallel ranges of the house running east-west, with the northern range extending one bay further east than the southern, and finishing with a further single storey bay described in the listing description as housing the boot room and larder (Figure 4). Beyond this is a small walled yard, bounded on its eastern side by a rectangular block running north-south. The same arrangement is shown on the Ordnance Survey maps of 1926 and 1938. By 1969, the single storey bay had been linked to the rectangular block to form an L-shaped range, the layout of which is shown in a plan from the Peterborough District Hospital archives (Figure 5). By early 1990s, the rectangular block and the link to the single storey bay had been demolished and replaced with the present single-storey building housing a high dependency unit for the mental health service that had taken over 'The Gables' (Figure 6).

3. Building Record

Introduction

3.1 The focus of the present record is the single storey service wing at the eastern end of the original building, but the Listed Building Consent covers the demolition of a variety of other modern elements that will restore the footprint of the building to its near original form. The demolition programme includes the removal of the modern extensions to the east end of the south range and to the east of the building, including the original single-storey service wing (formed of two small rooms and a corridor) and an ancillary electricity sub-station to the south, and the removal of the lift shaft and motor housing from the north elevation (Figure 7).

Electricity Sub-station

3.2 The electricity substation is a rectangular, flat-roofed, single-storey, brick-built structure of no heritage value, constructed between 1977 and 1988 and made redundant by the redevelopment of the site. It is located just south of the south-east corner of the south range of 'The Gables', centred on NGR 517979 298784 (Figure 7, Plate 1).

Lift shaft and Motor Housing

3.3 The lift shaft is a narrow, rectangular, flat-roofed, two-storey structure formed of a steel frame faced with corrugated metal sheeting. It is of no heritage value and was probably constructed between 1977 and 1988 to a plan dated 1972. It is attached to the north range of 'The Gables', between the two western gables, centred on NGR 517951 298804 (Figure 7, Plate 2).

3.4 The motor housing for the lift is a small, rectangular, flat-roofed, single-storey, brick-built structure of no heritage value, probably constructed between 1977 and 1988. It is attached to the north range of 'The Gables', between the two ground floor windows in the western gable, centred on NGR 517947 298803 (Figure 7, Plate 3).

Extensions to East End of South Range

3.5 The extensions to the east end of the south range are formed of three separate elements (Figure 7, Plates 4 & 5): a square, flat-roofed, two-storey, brick-built block of no heritage value, probably built in the 1960s, attached to the south-facing gable of the eastern bay of the north range (centred on NGR 517977 298796); an L-shaped, flat-roofed, single-storey, brick-built block of no heritage value, probably built in the 1960s, attached to the eastern end of the south range and extending south of the building line to wrap around the southern elevation of the range (centred on NGR 517973 298793); and, a rectangular, flat-roofed, single-storey, brick-built block of no heritage value, probably built in the 1990s, infilling the space between the earlier two-storey and L-shaped blocks (centred on NGR 517977 298792).

Eastern Extension

3.6 The eastern extension is a free-standing, irregular-shaped, brick-built block of no heritage value, probably built in the early 1990s to designs dated 1984-5, standing to the east of 'The Gables' and linked to it through the single-storey service wing attached to the east end of the north range. It is centred on NGR 5179870 298799 (Figure 7, Plate 6).

3.7 The principal range has a tiled gablet roof running north-south, with a gablet-roofed bay running east towards the north end of the range, and a similar bay running west towards the

south end. A sloping roof links the south-east corner of the principal range with the south-east corner of the eastern bay.

Service Wing

Exterior

3.8 The service wing attached to the eastern elevation of the north range of ‘The Gables’ represents the only original element that is proposed for demolition. It consists of a square, single-storey, red brick-built block with a pitched roof of modern cement tiles centred on NGR 517980 298804.

3.9 The only elevation that is clearly visible is to the north, and it includes a three-light window with limestone dressings and mullions to the west, and a similar two-light window to the east, both located just below the eaves and both boarded on the exterior at the time of recording (Figure 7, Plate 7).

Interior

3.10 The layout of the interior consists of a corridor running east-west with two rooms to the north. These would both originally have been accessed from the corridor and are shown thus on a plan from the hospital archives dated 1969 (Figure 8), which captions the western room as ‘larder’ and the eastern as ‘store’. When the eastern extension was built, both openings from the corridor were blocked up, with the former larder being knocked together with the room to its west to form a ‘staff room’, and the former store being converted to a sluice room accessed from a new opening in its eastern elevation (see Figure 6).

3.11 Both rooms retain their original windows, with limestone frames and mullions, and square leaded glazing in each light (Plates 8 & 9). No other significant surviving features were noted.

4. Discussion

4.1 As part of the proposed redevelopment of ‘The Gables’, a listed late Victorian villa or town house located on the western approaches to Peterborough city centre, a programme of demolition is to be undertaken, focused on additions and extensions to the building since the 1960s, but including one small single-storey element that forms part of the original structure. Between the 1960s and 2012, ‘The Gables’ formed part of Peterborough District Hospital.

4.2 The later elements are all functional structures of no heritage value in the context of the listed building and its curtilage. They include a detached electricity sub-station, an external lift shaft and its associated motor housing, one two-storey and two single-storey extensions, and a free-standing but linked single-storey block. Their removal aims to restore the original form of ‘The Gables’ and its aesthetic integrity.

4.3 The single-storey bay at the east end of the north range of ‘The Gables’, is shown to be part of the original structure on the Ordnance Survey 25-inch map for 1901. This is identified in the listing description as housing the boot room and larder. Beyond this the map shows a small walled yard, bounded on its eastern side by a rectangular block running north-south. The same arrangement is shown on the Ordnance Survey maps of 1926 and 1938. By 1969, the single-storey bay had been linked to the rectangular block to form an L-shaped range, the layout of which is shown in a plan from the Peterborough District Hospital archives. Sometime after 1988, the rectangular block and the link to the single-storey bay were demolished and replaced with a single-storey block housing a ‘high dependency unit’ for the mental health service that had taken over ‘The Gables’.

4.4 The layout of the original single-storey bay shown on the 1969 plan suggests that the southern corridor provided a link into the eastern yard, with a three-light mullioned window in the southern elevation. The boot room and larder are renamed on the 1969 plan as ‘larder’ and ‘store’. The remodelling associated with the construction of the ‘high dependency unit’, removed the corridor window and inserted a door at the western end of the southern elevation. It also altered the access into the two northern rooms, which are named on the 1984 plan of the ‘high dependency unit’ as ‘staff room’ and ‘dirty utility’.

4.5 Although the single-storey bay forms part of the original structure, its function was as a link to the eastern yard and the service block on its eastern side. This linking function was retained when the ‘high dependency unit’ was built, but the demolition of this modern building effectively makes the bay redundant by removing its intended purpose.

Conclusion

4.6 The removal of various modern elements attached to, or in the curtilage of ‘The Gables’, aims to restore the original form of the building and its aesthetic integrity. The single-storey bay attached to the eastern end of the north range, formed part of, and a link to, a service area to the east of the house that was demolished to make way for the post-1988 ‘high dependency unit’. This bay survived as a link to the unit, with altered access to both the corridor and the rooms, but the unit’s removal effectively makes the bay redundant and reduces its relevance to the remainder of the house. In this context, its demolition is not considered to represent a major loss to the significance of ‘The Gables’ as a whole.

5. Sources Consulted

ARCHIVES

Peterborough District Hospital Archive

PDH ref	Date	Description
3758/11	1972	The Gables Pre Convalescent Unit
2.42.6.29.0	N.D.	'The Gables' – Peterborough: Survey
2/47/14-1	1984	Peterborough DH, The Gables: High Dependency Unit
2/47/14-005	1985	Peterborough DH, The Gables: High Dependency Unit
56/18	1969	Gables Maternity Hospital, Peterborough: Building Survey (Ground)
56/19	1969	Gables Maternity Hospital, Peterborough: Building Survey (First & Basement)

BIBLIOGRAPHY

Ashworth, H. & Hillelson, D. 2014 *Former Peterborough District Hospital, Peterborough: Heritage Impact Assessment*. Heritage Network report no.844

Department of Culture, Media and Sport (DCMS) Statutory List of Buildings of Special Architectural or Historic Interest.

English Heritage 2006 *Understanding Historic Buildings: A guide to good recording practice*. London: The Stationery Office

Hillelson, D. 2014 *Former Peterborough District Hospital, Peterborough: The Gables – Demolition Phase, Heritage Statement and Mitigation Strategy*. Heritage Network

Institute for Archaeologists 2008 *Standard and Guidance for the Archaeological Investigation and Recording of Standing Buildings or Structures*

Medlycott, M. (ed.) 2011 *Research and Archaeology Revisited: a revised framework for the East of England*. East Anglian Archaeology Occasional Paper 24.

INTERNET

Ordnance Survey mapping: www.old-maps.co.uk.

Ordnance Survey maps - 1876 & 1954: www.pro-map.co.uk.

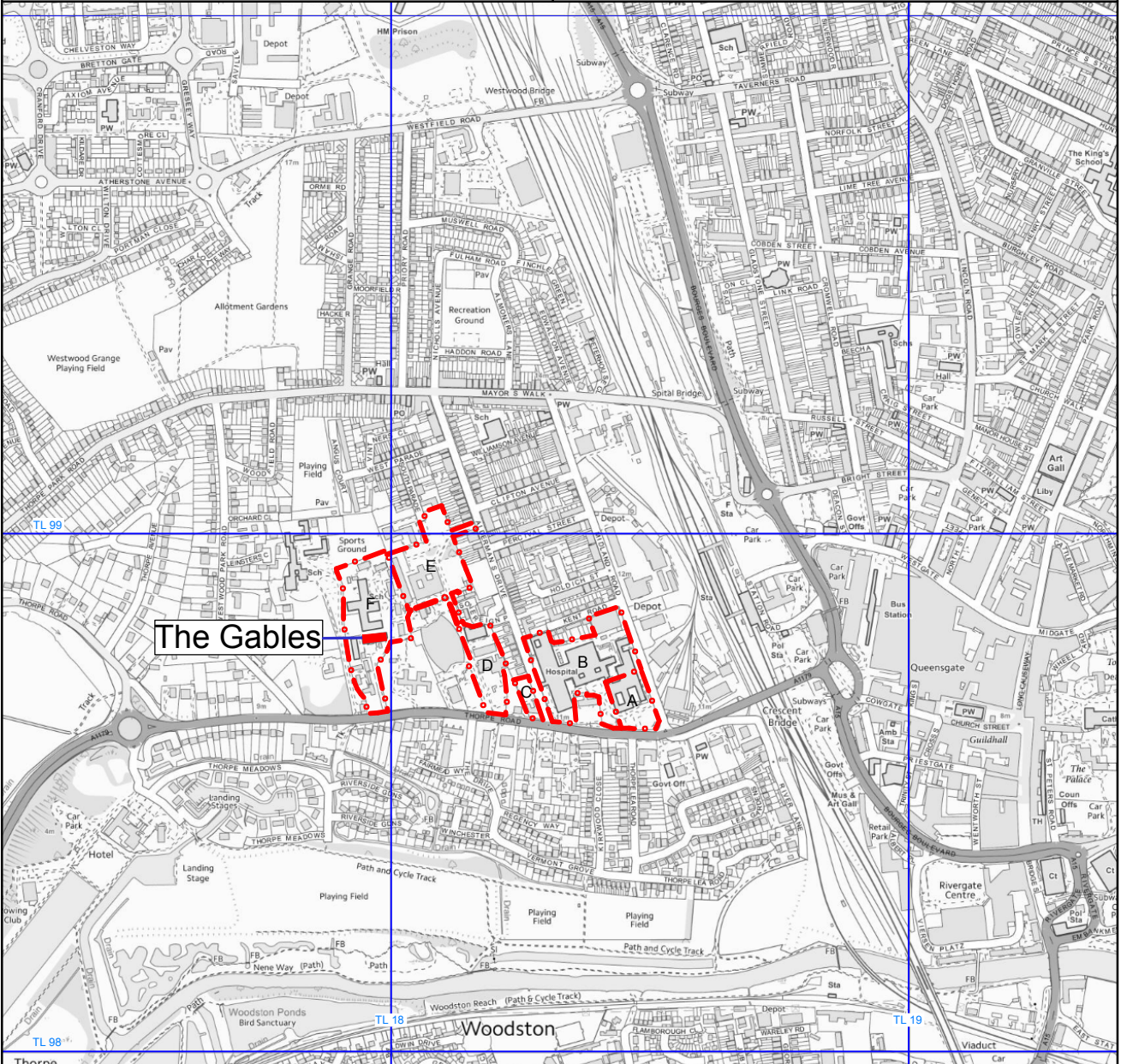
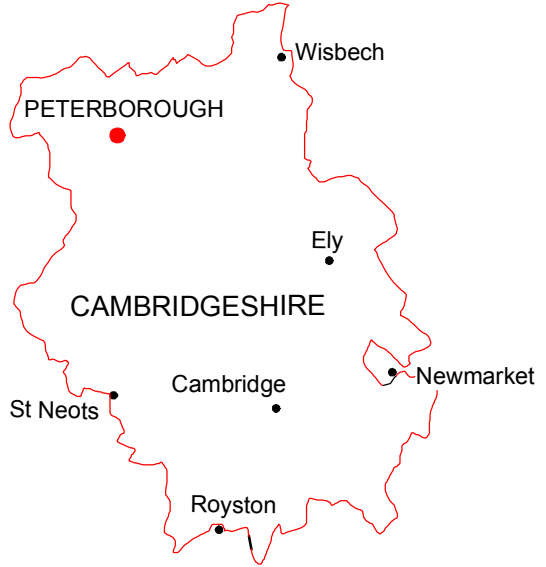
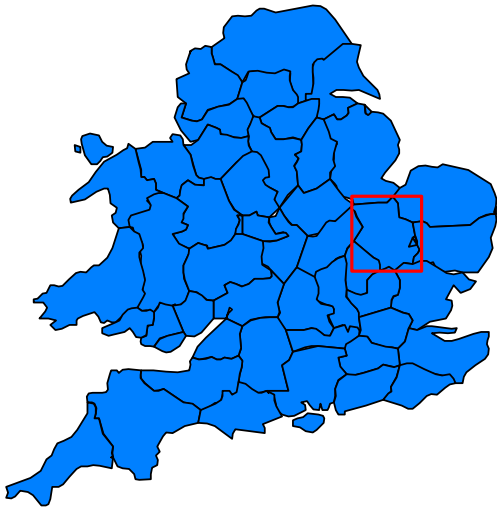
6. Illustrations

Figure 1	Site location
Figure 2	'The Gables' Estate in 1901
Figure 3	Site layout in 2012
Figure 4	Plan of 'The Gables' enlarged from 1901 OS map
Figure 5	Plan of 'The Gables' in 1969
Figure 6	Plan of 'High Dependency Unit' in 1984
Figure 7	Elements scheduled for demolition
Figure 8	Enlargement from plan of 'The Gables' in 1969
Plate 1	Electricity sub-station, facing north-west
Plate 2	Lift shaft, facing south
Plate 3	Lift motor housing, facing south
Plate 4	Extensions to east end of south range, facing north-east
Plate 5	Extensions to east end of south range, facing north-west
Plate 6	Eastern extension, facing north-west
Plate 7	Plate 07 - Service wing, facing south
Plate 8	Service wing, western room, facing north-east
Plate 9	Service wing, eastern room, facing north

THE HERITAGE NETWORK LTD

'The Gables', Thorpe Road,
Peterborough

HN1152

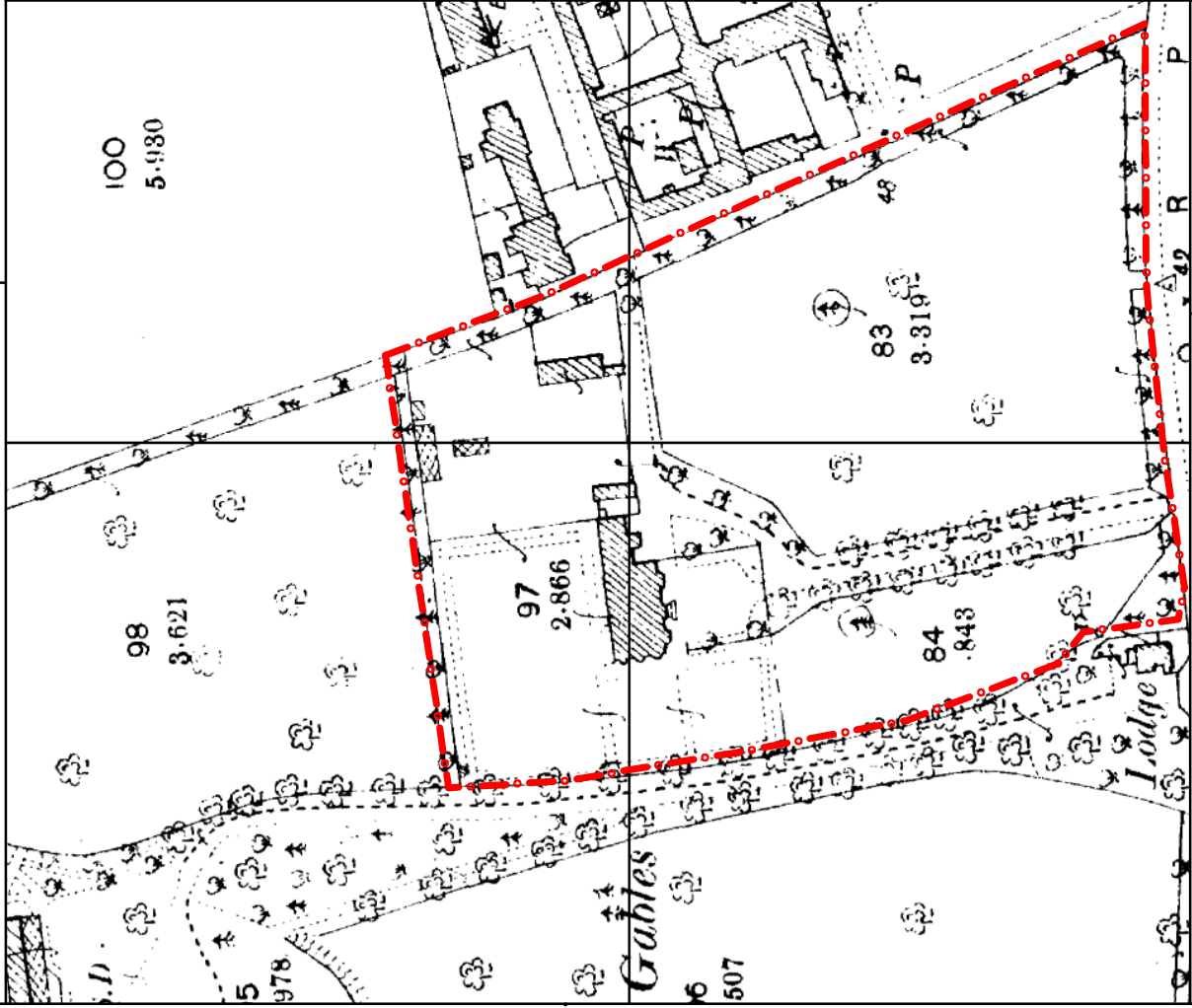


Site Location

Scale 1:12500

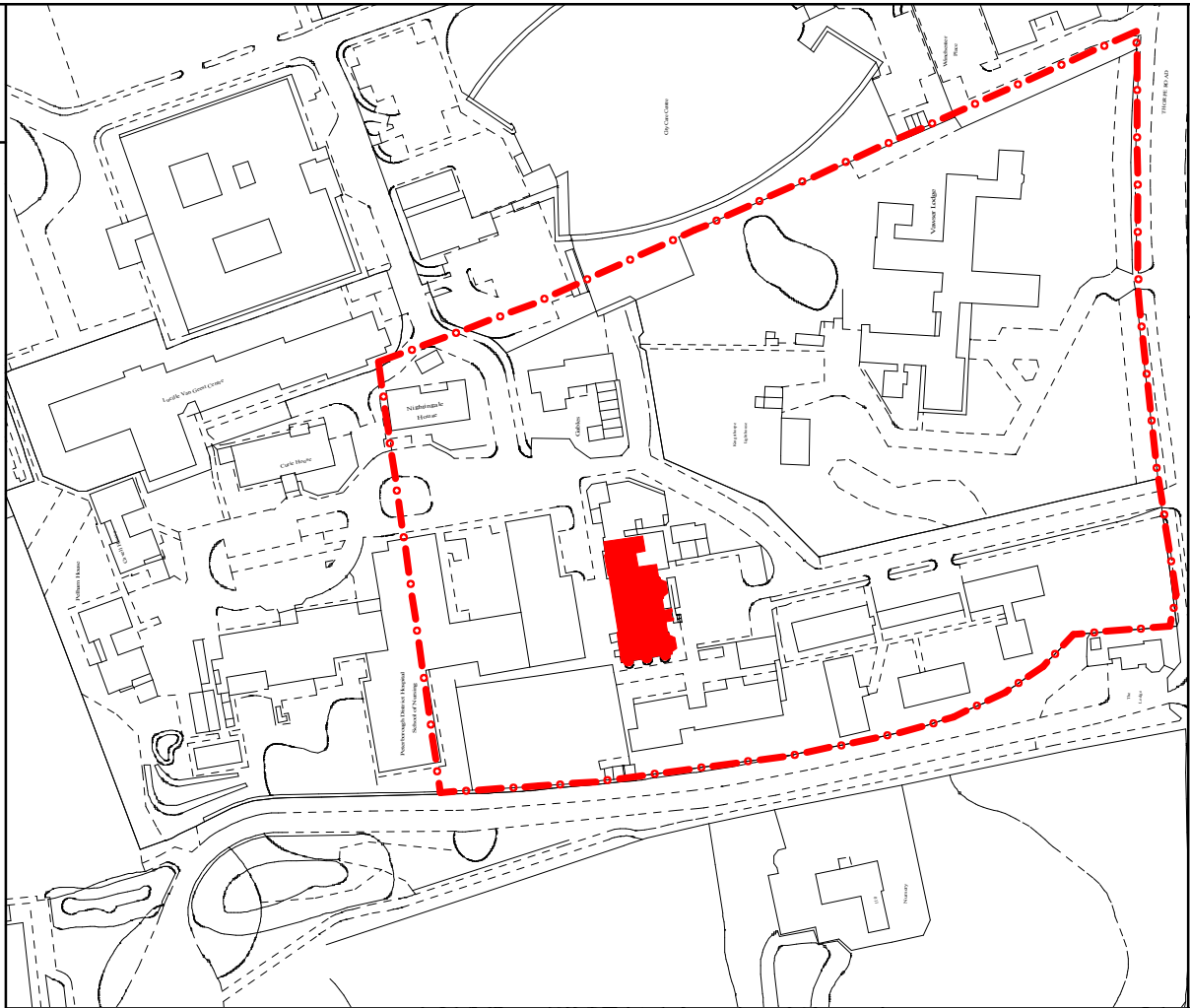
Ordnance Survey © Crown Copyright 2014. All rights reserved. Licence number 100022432

Figure 1



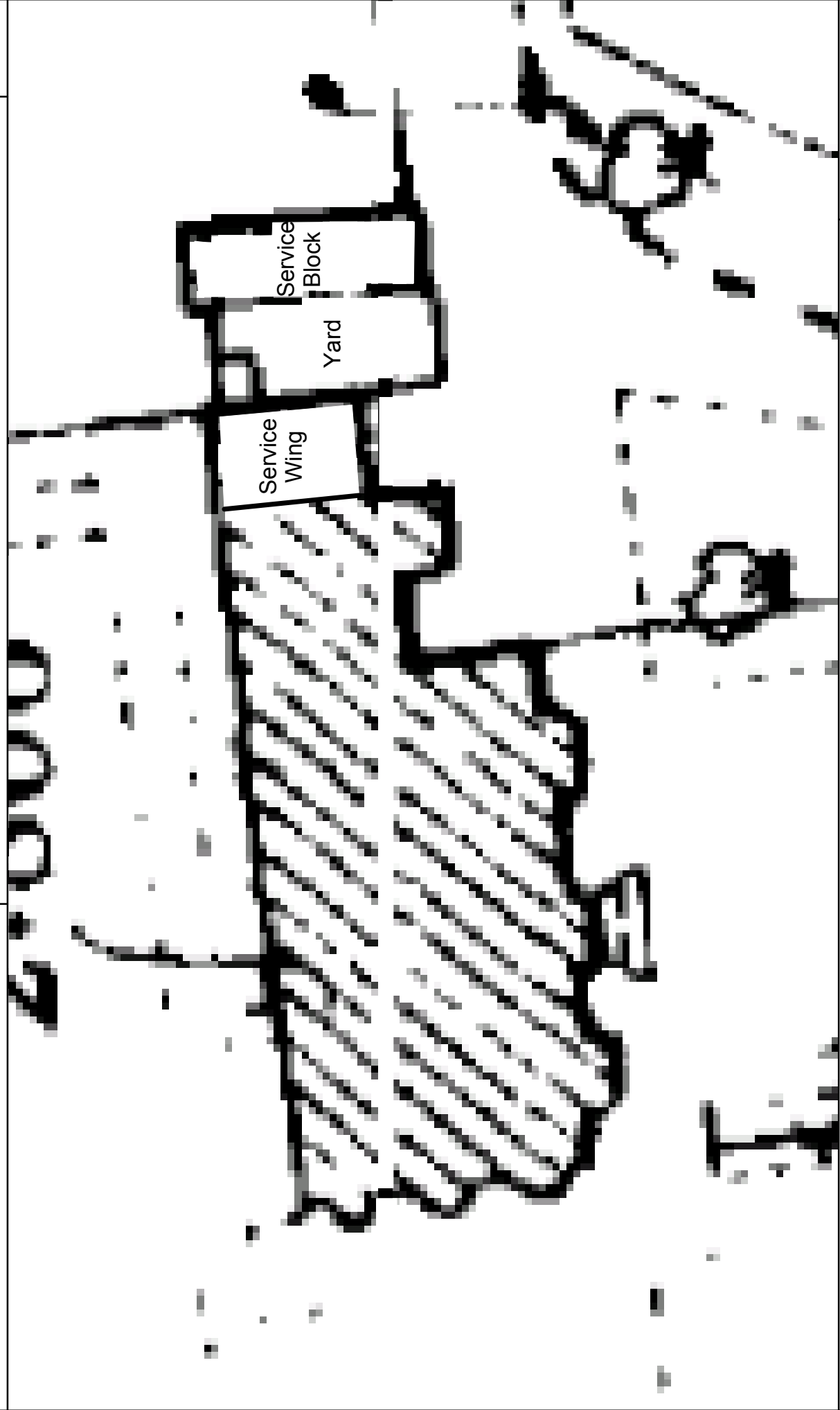
Scale 1:2000
Figure 2

'The Gables' Estate in 1901

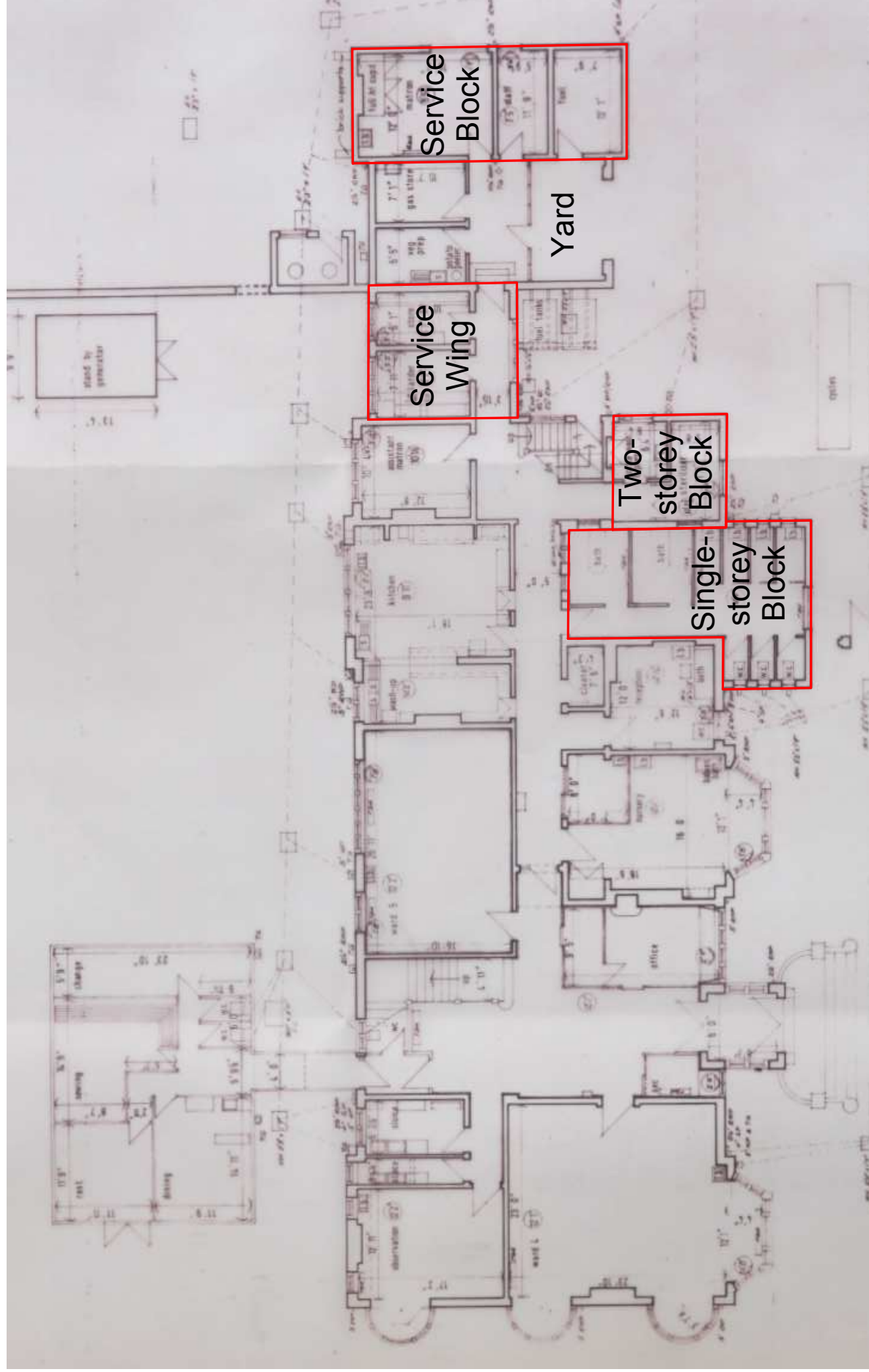


Scale 1:2000
Figure 3

Site layout in 2012



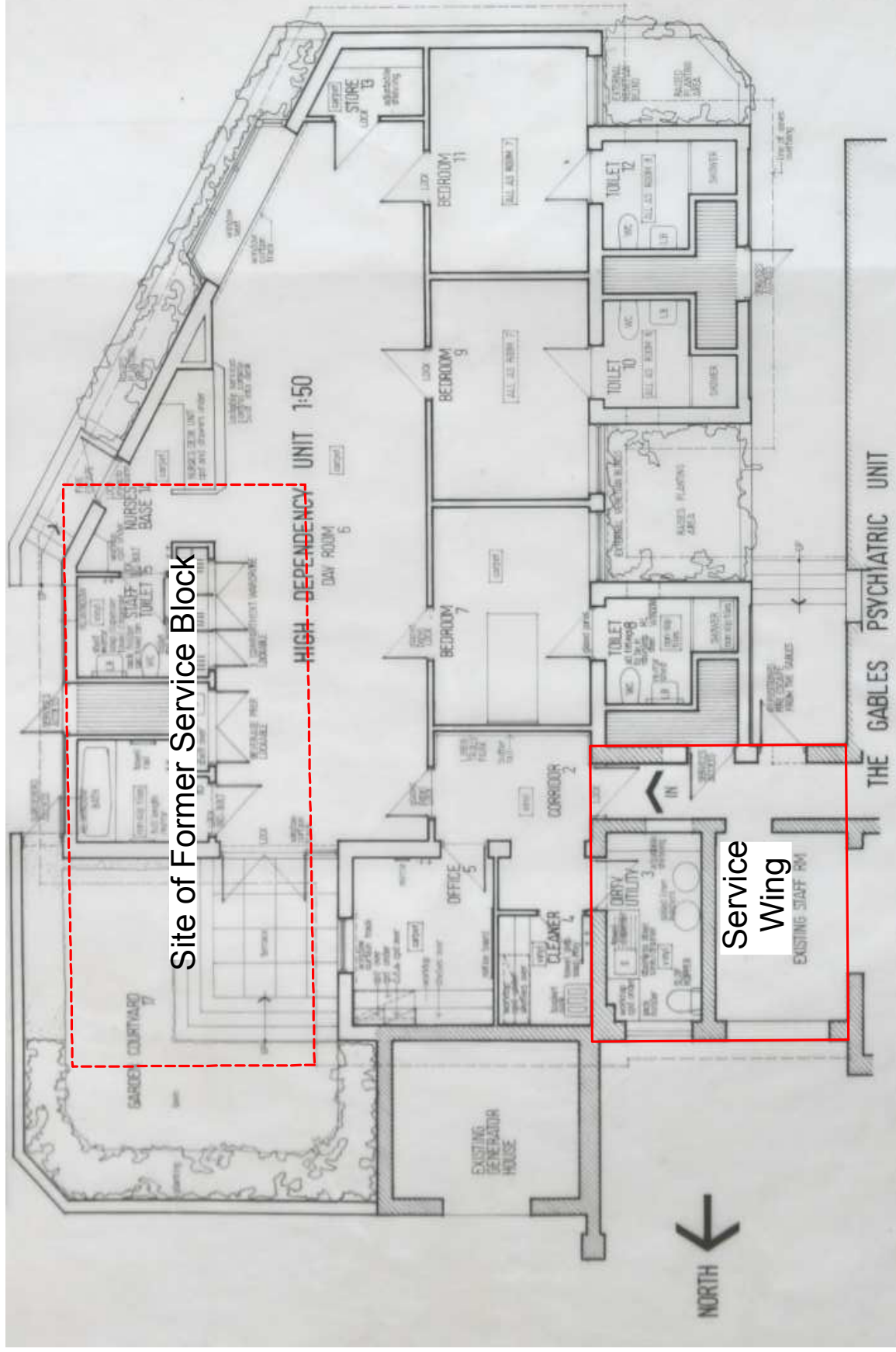
Plan of 'The Gables' enlarged from the 1901 Ordnance Survey



Plan of 'The Gables' from the Peterborough District Hospital Archives, 1969

Scale 1:200

Figure 5



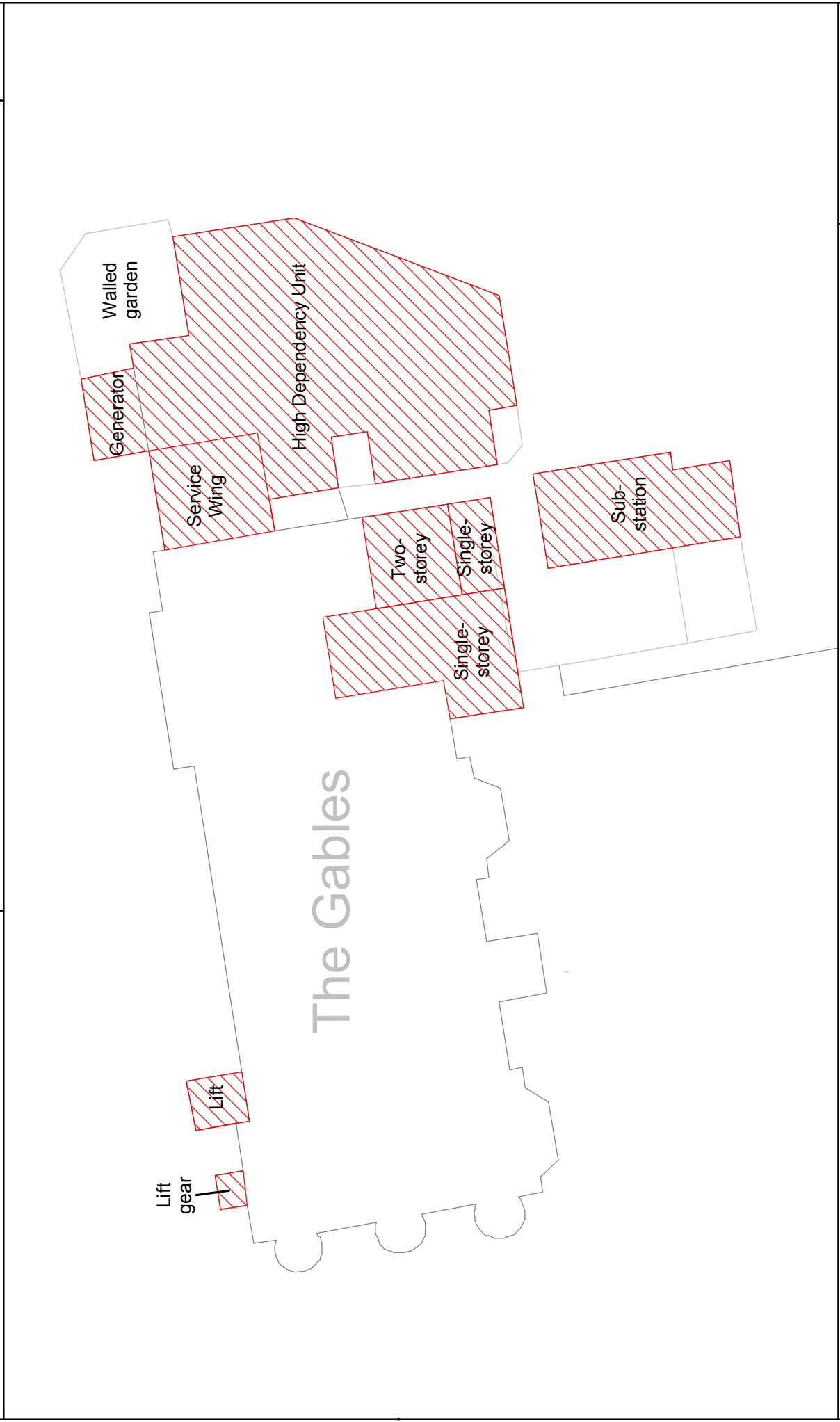
Site of Former Service Block

Service Wing

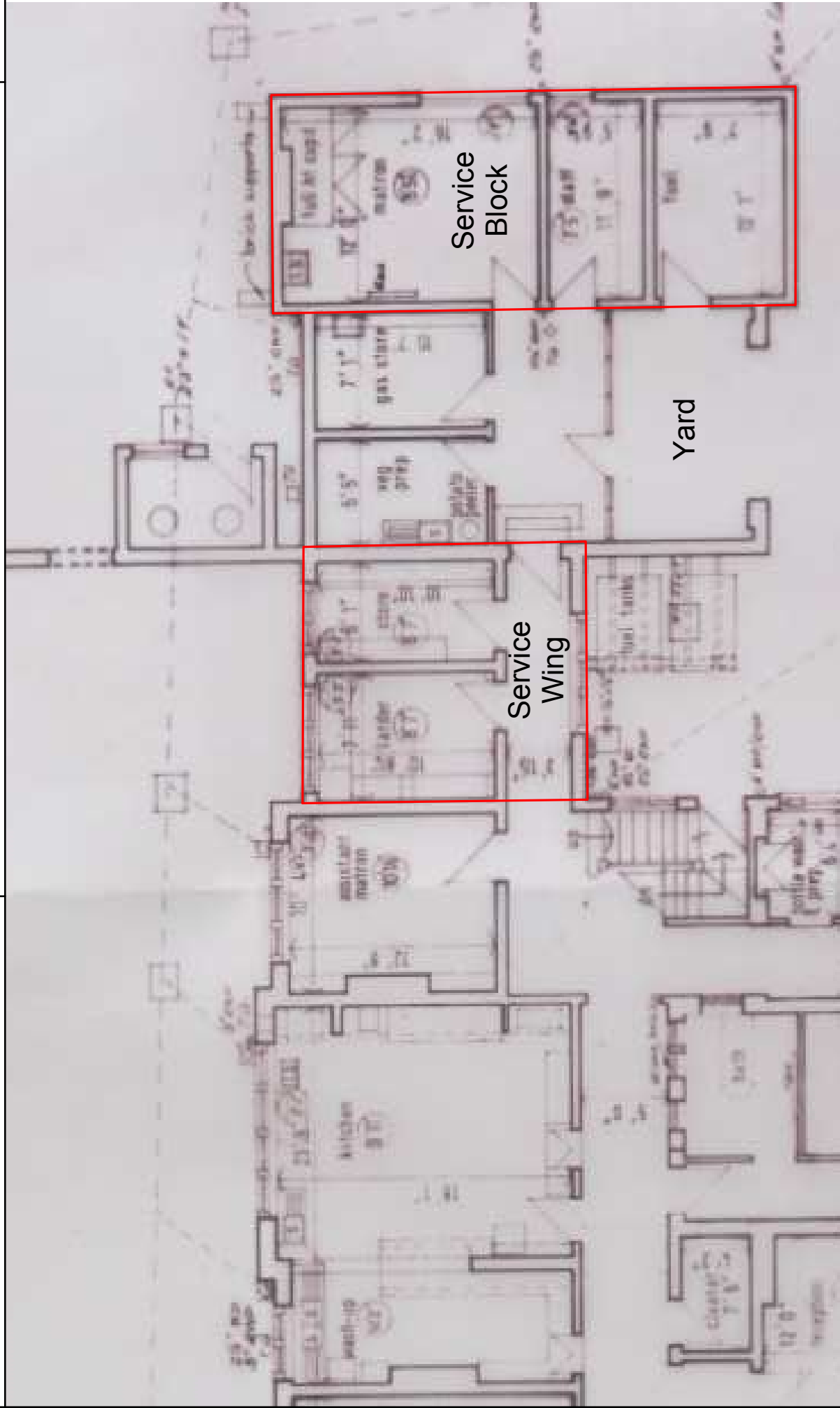
Plan of 'High Dependency Unit' from the Peterborough District Hospital Archives, 1984

Scale 1:100

Figure 6



Elements scheduled for demolition



Enlargement of plan of 'The Gables' from the Peterborough District Hospital Archives, 1969

Scale 1:100

Figure 8

HN1152: 'The Gables', Thorpe Road, Peterborough



Plate 01 - Electricity sub-station, facing north-west



Plate 02 - Lift shaft, facing south

HN1152: 'The Gables', Thorpe Road, Peterborough



Plate 03 - Lift motor housing, facing south



Plate 04 - Extensions to east end of south range, facing north-east

HN1152: 'The Gables', Thorpe Road, Peterborough



Plate 05 - Extensions to east end of south range, facing north-west



Plate 06 - Eastern extension, facing north-west

HN1152: 'The Gables', Thorpe Road, Peterborough



Plate 07 - Service wing, facing south



Plate 08 - Service wing, western room, facing north-east

HN1152: 'The Gables', Thorpe Road, Peterborough



Plate 09 - Service wing, eastern room, facing north

Appendix

OASIS Data Entry

OASIS ID: heritage1-199386	
Project details	
Project name	'The Gables' (Service Wing), Thorpe Road, Peterborough
Short description of the project	<p>As part of the proposed redevelopment of 'The Gables', a listed late Victorian mansion located on the western approaches to Peterborough City Centre, a programme of demolition is to be undertaken, focused on additions and extensions to the building since the 1960s, but including one small single-storey element that forms part of the original structure. Between the 1960s and 2012, 'The Gables' formed part of Peterborough District Hospital. In response to a condition on the listed building consent for the demolition works, an historic building record has been made of the elements to be removed focusing on the original single-storey bay.</p> <p>The later elements are all functional structures of no heritage value in the context of the listed building and its curtilage. They include a detached electricity sub-station, an external lift shaft and its associated motor housing, one two-storey and two single-storey extensions, and a free-standing but linked single-storey block. Their removal aims to restore the original form of 'The Gables' and its aesthetic integrity.</p> <p>The single-storey bay at the east end of the north range of 'The Gables', is shown to be part of the original structure on the Ordnance Survey 25-inch map for 1901. This is identified in the listing description as housing the boot room and larder, and includes a corridor to the south linking the house to a service yard to the east. The bay was remodelled, and the eastern yard and a service block beyond were demolished, with the construction of a 'high dependency unit' after 1988. A 1985 plan identifies the surviving rooms as 'staff room' and 'dirty utility'.</p> <p>The removal of the 'high dependency unit' effectively makes the single-storey bay redundant and reduces its relevance to the remainder of the house. In this context, its demolition is not considered to represent a major loss to the significance of 'The Gables' as a whole.</p>
Project dates	Start: 01-11-2014 End: 19-12-2014
Previous/future work	No / Yes
Reference codes	HN1152 - Contracting Unit No.
Type of project	Building Recording
Site status	Listed Building
Current Land use	Other 2 - In use as a building
Monument type	TOWN HOUSE Post Medieval
Significant Finds	NONE None
Methods & techniques	"Survey/Recording Of Fabric/Structure"
Prompt	Listed Building Consent
Project location	
Country	England
Site location	CAMBRIDGESHIRE PETERBOROUGH PETERBOROUGH 'The Gables', Thorpe Road, Peterborough
Postcode	PE3 6JA
Study area	2400.00 Square metres
Site coordinates	TL 17980 98804 52.5738720101 -0.258853868209 52 34 25 N 000 15 31 W Point
Height OD / Depth	Min: 0m Max: 0m

Project creators	
Name of Organisation	Heritage Network
Project brief originator	Contractor (design and execute)
Project design originator	Heritage Network
Project director/manager	David Hillelson
Project supervisor	David Hillelson
Type of sponsor/funding body	Developer
Name of sponsor/funding body	Land Improvement
Project archives	
Physical Archive Exists?	No
Digital Archive recipient	Peterborough Museum
Digital Archive ID	HN1152
Digital Contents	"none"
Digital Media available	"Images raster / digital photography"
Paper Archive recipient	Peterborough Museum
Paper Archive ID	HN1152
Paper Contents	"none"
Paper Media available	"Report"
Project bibliography 1	
Publication type	Grey literature (unpublished document/manuscript)
Title	'The Gables' (Service Wing), Thorpe Road, Peterborough: Historic Building Record
Author(s)/Editor(s)	Hillelson, D.
Other bibliographic details	Report no.903
Date	2015
Issuer or publisher	Heritage Network
Place of issue or publication	Letchworth Garden City
Description	A4 booklet, comb-bound, green cover, 12 text pages, 8 figures, 9 plates