

**Stotfold Conservative Club,
97 Regent Street, Stotfold, Bedfordshire**

HN1183

Report No. 925

Site name and address:	Stotfold Conservative Club, 97 Regent Street, Stotfold Bedfordshire, SG5 4DZ		
County:	Bedfordshire	District:	Central Bedfordshire
Village/town:	Stotfold	Parish:	Stotfold
Planning reference:	CB/15/00033/FULL	NGR:	TL 21726 37276
Client name and address:	Architech Ltd, 8/9 Kingsholme, Lower Titmore Green, Little Wymondley, Hitchin, SG4 7JT		
Nature of development:	Residential development	Previous land use:	Leisure and Recreational (grassed area)
Site Status:	None	Reason for investigation:	Direction of local planning authority (NPPF)
Position in planning process:	Pre-determination	Project brief originator:	Local authority
Size of affected area:	c.750m ²	Size of area investigated:	40m ²
HN Ref:	HN1183	Museum Ref:	2015.09
Organisation:	Heritage Network	Site Director:	David Hillelson
Project type, methods etc.	Trial trenching	Archive Recipient:	Bedford Museum
Start of work	20/04/2015	Finish of work	21/04/2015
Related HER Nos:	n/a	Periods represented:	Unknown
Oasis UID:	heritage1-203685	Significant finds:	None
Monument types:	Ditch		
Physical archive:	None		
Previous summaries/reports:	None		

Introduction:

In advance of the determination of a planning application for redevelopment of land at the Stotfold Conservative Club, 97 Regent Street, Stotfold, Bedfordshire, SG5 4DZ, the Heritage Network was commissioned by Architech Ltd to undertake a programme of archaeological investigation. In line with the requirements of the Department of Communities and Local Government's *National Planning Policy Framework* (NPPF) and the Central Bedfordshire Council's (CBC) *Validation Checklist*, the applicant is required to submit a description of the significance of any heritage assets affected by the proposal, in the form of a Heritage Statement.

Narrative:

The site is situated in the northern half of the town, on the western side of Regent Street, south of the junction with The Green and Common Road. The development is situated on grass land in front of the Conservative Club and adjacent to the road, centred on NGR TL 2128 3725 (Figure 1; Plate 1).

The present investigation included two trial trenches focused on the footprints of the proposed new development (Figure 2, Plate 2). Both trenches measured approximately 10m in length by 2m wide, which represented a total area of 40 square metres.

Trench 1 (Figure 3, Plate 3) was aligned north to south and Trench 2 was aligned east to west. Both trenches revealed similar stratigraphy (Plate 4) consisting of a 0.3m thick topsoil formed of a friable very dark grey (10YR 3/1) clayey silt with rare sub-angular flint. This overlay a 0.5-0.7m thick friable subsoil of light olive brown (10YR 5/3) clayey silt with occasional sub-angular flint. Finally the natural substratum was revealed, consisting of a loose yellowish brown (10YR 5/8) silty sand with frequent rounded flint.

Both trenches demonstrated a degree of disturbance from services. These were exposed and stepped over during machining. To compensate for this, Trench 1 was extended in order to meet the required sample size. However,

11 Furmston Court, Icknield Way, Letchworth, SG6 1UJ

Tel: (01462) 685991 Fax: (01462) 685998 Email: enquiries@heritagenetwork.co.uk

Trench 2 was crossed by at least four separate services at its east end (Plate 5), which limited its full investigation.

At the west end of Trench 2, and running diagonally across it on a northeast to southwest alignment, a very shallow and narrow linear feature was revealed cutting the natural (Figure 4, Plate 6). This feature [201] demonstrated gently sloping sides and a flattish base. It measured >3.5m long by 0.7m wide and 0.09m deep. Its fill (202) was a friable light olive brown (10YR 5/4) clayey silt with moderate rounded flint and revealed no finds or datable evidence. The feature was sealed by the subsoil.

Trench 1 data:

Length (m):	10	Width (m):	2	Maximum Depth (m):	1.15	Orientation	N-S		
Level at N End of Trench (mOD)			Top	45.09	Level at S End of Trench (mOD)			Top	45.28
			Base	43.98				Base	44.13
Context	Type	Description	Dimensions (m)						
			Length	Width	Depth				
-	Topsoil	Very dark grey (10YR 3/1) friable clayey silt with rare sub-angular flint	>10.	>2	0.3				
-	Subsoil	Light olive brown (10YR 5/3) friable clayey silt with occasional sub-angular flint	>10.	>2	0.7				
-	Natural	Yellowish brown (10YR 5/8) loose silty sand with frequent rounded flint	>10	>2	>0.15				

Trench 2 data:

Length (m):	9.75	Width (m):	2	Maximum Depth (m):	0.9	Orientation	E-W		
Level at E End of Trench (mOD)			Top	45.12	Level at W End of Trench (mOD)			Top	45.11
			Base	44.37				Base	44.27
Context	Type	Description	Dimensions (m)						
			Length	Width	Depth				
-	Topsoil	Very dark grey (10YR 3/1) friable clayey silt with rare sub-angular flint	>9.75	>2	0.3				
-	Subsoil	Light olive brown (10YR 5/3) friable clayey silt with occasional sub-angular flint	>9.75	>2	0.5				
202	Fill	Fill of [201] Light olive brown (10YR 5/4) friable clayey silt with moderate rounded flint	>3.5	0.7	0.09				
201	Cut	Cut of shallow linear	>3.5	0.7	0.09				
-	Natural	Yellowish brown (10YR 5/8) loose silty sand with frequent rounded flint	>9.75	>2	>0.1				

Discussion:

Stotfold Conservative Club and the grassed area forming the proposed development site, lie on a raised island at approximately 45.21m AOD. The surrounding ground to the south, east and north is substantially lower and has seen a large amount of residential development. On this basis, it was thought that the site could be capped by a significant depth of made ground. Conversely, good undisturbed stratigraphy was revealed, suggesting that this small pocket of land could have remained undeveloped since at least the post-medieval period.

Trench 2 revealed an undated shallow linear feature [201] cutting the natural substratum and sealed by the subsoil. It is on the same alignment as Regent Street and is likely to represent a field or property boundary, possibly the boundary to Plot 140 shown on the 1882 and 1898 editions of the 25-inch series Ordnance Survey map.

No archaeological features, deposits or finds were encountered that would be considered to contribute to the research aims for the evaluation as defined in the approved Project Design and particularly relating to the northern boundaries of the medieval settlement of Stotfold. On this basis, the risk that the proposed development might disturb archaeological remains of any significance may be considered to be *Low* for all periods.

Illustrations:

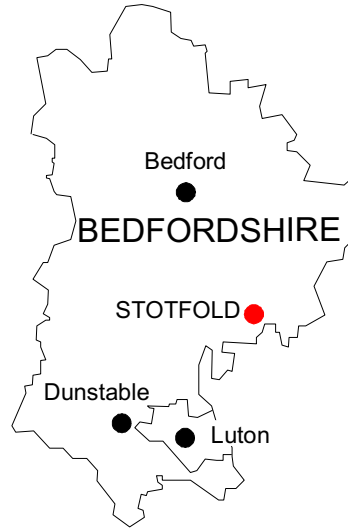
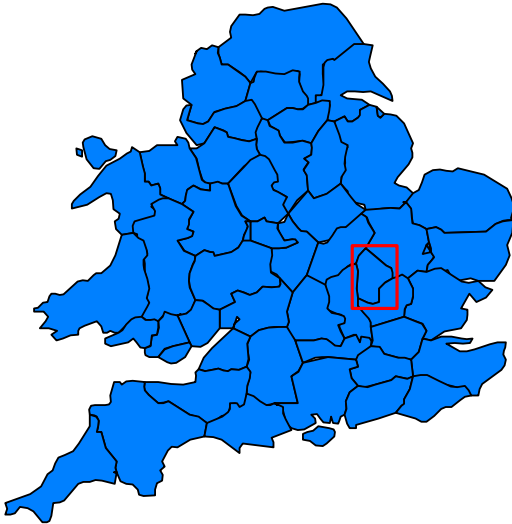
Figure 1	Site Location
Figure 2	Trench Layout
Figure 3	Trench 1: Plan & Section
Figure 4	Trench 2: Plan & Section
Plate 1	Site, looking N from Regent Street, showing raised ground surface
Plate 2	Site prior to excavation, looking E
Plate 3	Trench 1, Looking S
Plate 4	Trench 1: Indicative section, looking E
Plate 5	Trench 2: Showing services, looking W
Plate 6	Linear [201], looking SW

Daniel Phillips, BA (HONS) ACIFA
April 2015

THE HERITAGE NETWORK LTD

Stotfold Conservative Club,
97 Regent Street, Stotfold

HN1183



Site Location

Scale 1: 5000

Reproduced with the permission of Her Majesty's Stationery Office, Licence no. 100014861

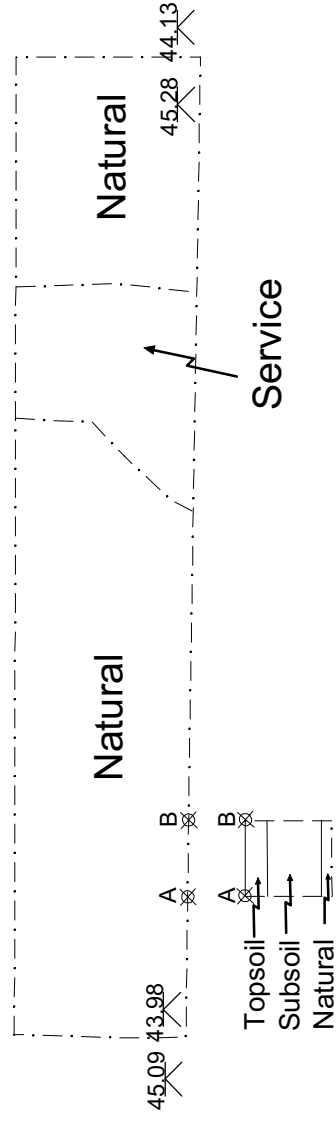
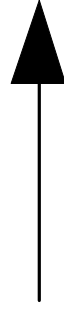
Figure 1



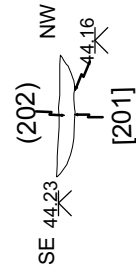
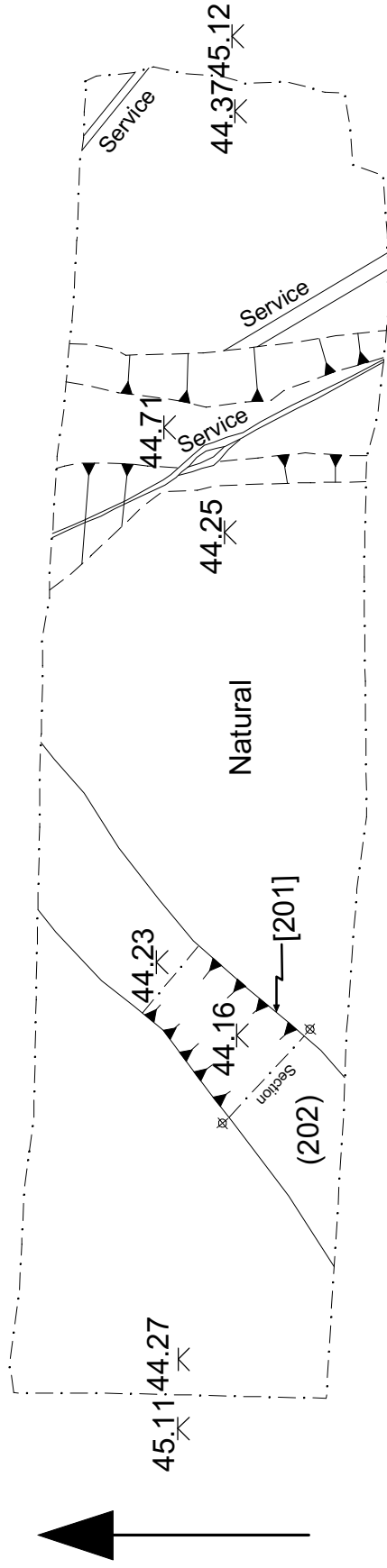
Trench layout

Scale 1:500

Figure 2



Trench 1: Plan & Section



Trench 2: Plan & Section



Plate 1: Site, looking north from Regent Street, showing raised ground surface



Plate 2: Site prior to excavation, looking east



Plate 3: Trench 1, Looking south



Plate 4: Trench 1: Indicative section, looking east



Plate 5: Trench 2: Showing services, looking west



Plate 6: Linear [201], looking southwest