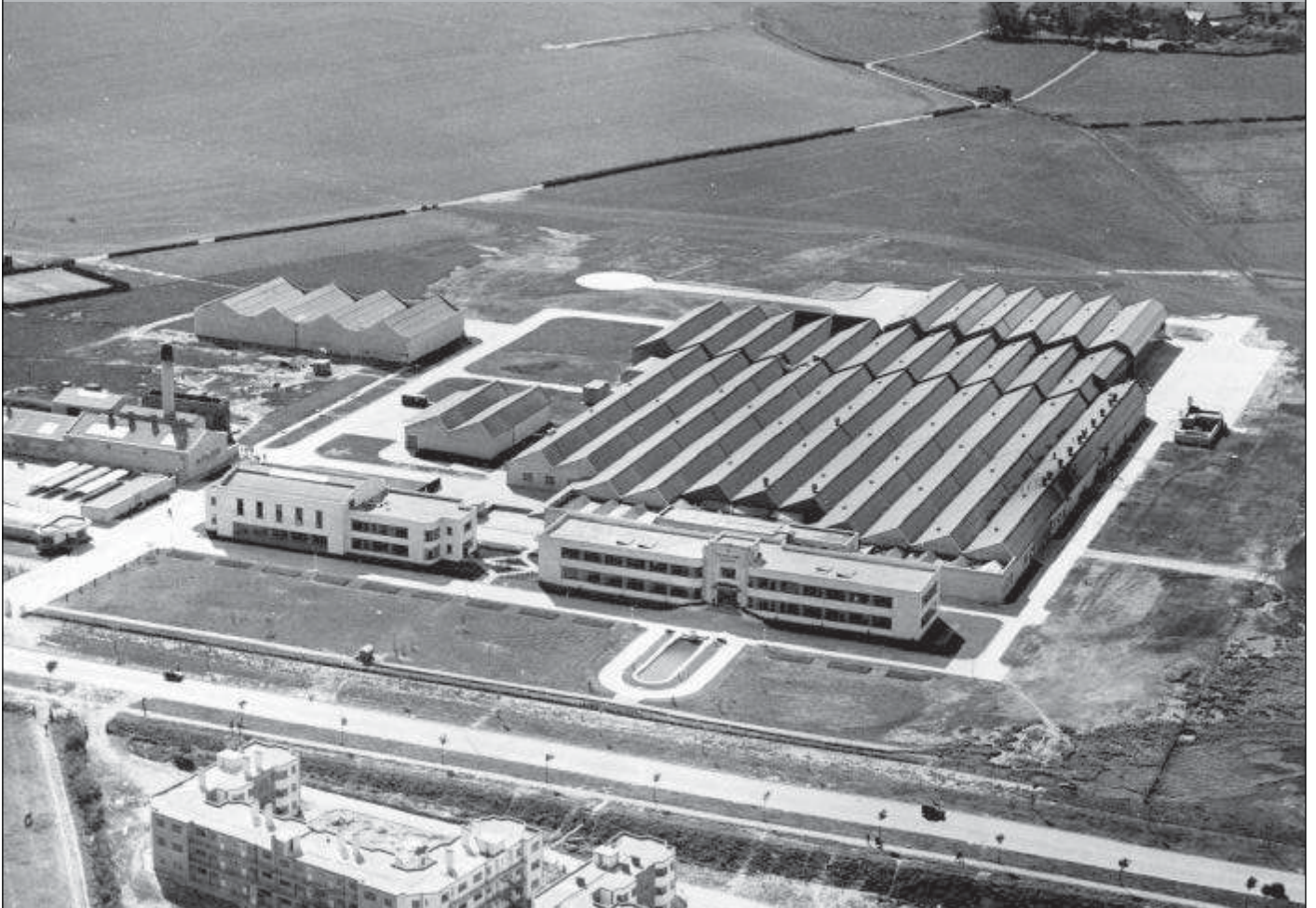


HERITAGE NETWORK



PLOT 1500

Comet Way, Hatfield, Herts.

(Former Administration & Canteen Blocks, Hatfield Aerodrome)

(HN624)

Historic Buildings Record



THE HERITAGE NETWORK LTD

Registered with the Institute of Field Archaeologists as an Archaeological Organisation

Archaeological Director: David Hillelson, BA MIFA

1500 COMET WAY
Hatfield, Herts.

(Former Administration and Canteen Blocks, Hatfield Aerodrome)

HN624

Historic Buildings Record

Prepared on behalf of Hertfordshire Constabulary

by

David Hillelson, BA MIFA

Report no.387

January 2007

© The Heritage Network Ltd

11 FURMSTON COURT, LETCHWORTH HERTS. SG6 1UJ

Tel: (01462) 685991 Fax: (01462) 685998

Contents

	Summary.....	Page i
Section 1	Introduction.....	Page 1
Section 2	Historical Background.....	Page 2
Section 3	Building record.....	Page 3
Section 4	Discussion.....	Page 8
Section 5	Sources Consulted.....	Page 9
Section 5	Illustrations.....	following Page 10
Appendix 1	Photographic Log.....	Page 11
Appendix 2	Digital Photographic Log.....	Page 12
Appendix 3	Index of Historical Photographs.....	Page 19

The cover photograph shows an aerial view of the de Havilland Aircraft factory in the mid-1930s, shortly after the completion of the Administration and Canteen Blocks (© BAE SYSTEMS)

Acknowledgements

The fieldwork for this project was carried out by David Hillelson, Giles Sholl and Abigail Rothwell. Illustrations were prepared by David Hillelson.

The Heritage Network would like to express its thanks to Andrzej Subocz and Peter Grimmer, Vincent and Gorbing Ltd; Ian Grimes, Hertfordshire Constabulary; Barry Guess and Mike Fielding, BAe Systems Heritage Department; Elaine MacGillvray, Glasgow City Libraries; and the staff of the Historic Environment Unit, HCC, for their co-operation and assistance in the execution of this project.

Summary

Site name and address:	Plot 1500, Comet Way, Hatfield		
County:	Hertfordshire	District:	Welwyn Hatfield
Village/town:	Hatfield	Parish:	Hatfield
Planning reference:	2006/442, 2006/571	NGR:	TL 2171 0897
Client name and address:	Hertfordshire Constabulary, Police HQ, Welwyn Garden City, AL8 6XF		
Nature of work:	Refurbishment	Previous land use:	Former factory offices
Site Code:	HN 624	OASIS UID:	heritage1-23646
Organisation:	Heritage Network	Site Director:	David Hillelson
Type of work:	Building Recording	Curating Archive:	Hertfordshire Archives
Related HER Nos:	n/a	Periods represented:	Modern
Previous summaries/reports:	n/a		

Synopsis: As the result of an archaeological condition on the planning permission for the refurbishment and renovation of the former Canteen and Administration Blocks for the Hatfield Aerodrome, Comet Way, Hatfield Herts., the Heritage Network was commissioned to create a record of the building and consider the historical context of the site.

The buildings are in International Modern style and were built of reinforced concrete in the early 1930s. The present study provides a written, drawn and photographic record of the buildings prior to the start of the development works which will convert them to a new use. By comparison with photographs from the archives of BAe Systems, and maps which show the changing layout of the aerodrome site since the 1930s, it is clear that the buildings have undergone only superficial changes since their construction. It is expected that the proposed development will largely retain the external appearance of the buildings and key elements of the interiors.

1. Introduction

1.1 This report has been prepared at the request of *Vincent and Corbin Ltd*, acting on behalf of *Hertfordshire Constabulary*, as a record of two modern buildings, forming part of the former Hatfield Aerodrome, located on Comet Way, Hatfield, Herts. Planning permission for the conversion of the buildings (refs. S6/2006/442/FP & S6/2006/571/LB) was granted by the Welwyn Hatfield District Council (WHDC), subject to two standard archaeological conditions (Condition 14 on Permission 442, and Condition 2 on Permission 571), issued in accordance with the provisions of the Department of the Environment's *Planning Policy Guidance Note 16* (PPG16). The scope of the required work was defined in a *Design Brief for Historic Building Recording* (ref. AI 02/08/2006) prepared by the *County Archaeology Office* (CAO) of Hertfordshire County Council, which acts as the archaeological adviser to WHDC. A full specification for the work carried out is included in the Heritage Network's Project Design dated September 2006.

1.2 The buildings comprise the former Administration Block and Staff Canteen for the factory complex, and are located on the north-west side of Comet Way approximately 450m south of its junction with Manor Road, centred on national grid reference TL 2171 0897 (Figure 1). Both buildings were built for the de Havilland Aviation Company in the 1930s and are associated with the heyday of British aircraft design and manufacture. They are Grade II listed (refs. 8/10001 & 10003) and are considered by the planning authority to be worthy of record in line with the recommendations contained in the published regional research agenda for the Eastern Counties (East Anglian Archaeology Occasional Paper 8, 2000).

1.3 The aim of the building recording has been to make a record of the buildings in their present condition, in advance of their proposed conversion to use as the local police headquarters and criminal justice unit, and to undertake additional research, as necessary, to place the buildings in their local and regional archaeological and historical context.

1.4 The full archive for the project will be deposited with Hertfordshire Archives and Local Studies (HALS) in order to preserve a record of the buildings in their present form. It includes measured drawings, original medium-format black and white photographic negatives and contact sheets, and digital images.

2. Historical Background

2.1 The site of Hatfield Aerodrome and the de Havilland Aircraft factory was acquired by Geoffrey de Havilland in 1930. It became the home of the RAF Reserve Flying School and the London School of Flying, and had developed as a sports and leisure centre by the mid-1930s with the construction of a club-house for the London Aeroplane Club, squash courts and a swimming pool (Figure 3).

2.2 De Havilland's intention in developing the site was to create a replacement for his factory at Stag Lane, Edgware. The sale of the Edgware site in 1933 provided the funds for the construction of the new factory at Hatfield. An architectural competition for the design of the new buildings was won by a young Scottish architect called Geoffrey Monro, grandson of the founder of Monro and Company of Bath Street, Glasgow.

2.3 The factory, located to the north of the existing Club buildings, appears to have been completed in 1934. The Administration and Canteen Blocks fronted onto the Barnet By-pass, the principal factory buildings being laid out to the rear (Figure 4).

2.4 During the years before the war, production of the Moth series of aircraft took place at Hatfield, including the famous Tiger Moth developed at Stag Lane. The later Hornet Moth and Comet Racer aeroplanes were both developed and built at Hatfield.

2.5 At the start of the Second World War the factory was involved in building Tiger Moth, Oxford and Dominie trainers for the RAF, as well as repairing Hurricane fighters. Development of the Mosquito was also underway but, following a direct hit on the factory by a German Ju88 in October 1940, further work was dispersed to other factories. During this period the factory was painted with camouflage colours and the Administration and Canteen Blocks gave up the clean white of its pre-war livery in favour of greens and browns (Figure 5).

2.6 The post-war years saw the construction of a 6000 feet runway in 1947 to accommodate the new era of jet airliners, notably the Comet, the first prototype of which was assembled in late 1948, with full-scale production starting in early 1950. The factory later saw the development and production of the DH121, later known as the Trident, the DH125, and the BAe146 (Figure 6).

2.7 In 1960, the de Havilland Aircraft Company was taken over by Hawker Siddeley, and, in turn, this merged with the British Aircraft Corporation and Scottish Aviation to become British Aerospace in 1977. As a result of the recession in the aircraft industry in the early 1990s, production of the BAe146 was transferred to Woodford and the decision was made to cease all design and production at the Hatfield site at the end of 1993.

3. Building Record

SITE DESCRIPTION

3.1 Together with the gatehouse, located just to the south of the present study area, the Administration and Canteen blocks form the last surviving buildings of the original 1930s Hatfield Aerodrome (Figure 2). They are situated in a line on the western side of the former Barnet By-pass (now known as Comet Way), behind a landscaped apron which now includes many mature trees. Opposite the main entrance to the Administration Block, is an apsidal ended rectangular ornamental pond and fountain (Plate 1). The site is reached by a short road off Comet Way, to the south of the study area, running between the canteen and the gatehouse, which was formerly the gated drive to the aerodrome.

CANTEEN

Exterior

3.2 A white painted two storey building in International Modern style, built of reinforced concrete in three unequal blocks (Figures 7-8; Plates 2-3). The central block is higher and wider than those at either end, with a vaulted roof. There are five tall metal-framed windows of six panes at first floor level in the eastern elevation, and a horizontal band of five windows, each of six lights formed of a total of 24 panes, on the ground floor, separated by piers formed of glazed green tiles, and having sills and lintels in shaped green-glazed brick-shaped tiles of a bluer shade than the piers. Below the ground floor sills, the wall is faced with green-glazed brick-shaped tiles, of a greyer shade than the window piers, laid in stretcher bond. In the western elevation, the northern-most first floor window bay accommodates a fire-exit, and the end window bays on the ground floor have been similarly designed as double doors, the southern having a cantilevered canopy, the northern having a porch formed by the balcony for the exit above. To the north of this, an external shaft accommodates a dumb-waiter.

3.3 At the southern end of the central block, an entrance block has a central doorway with a cantilevered canopy and blue-green glazed tile architrave, reached by two steps flanked by low dwarf walls. The doorway is flanked by two six-light metal-framed windows with green-glazed piers. The arrangement at first floor level is similar, a two light window replacing the door opening. A pair of two-light windows are set, one above the other, in the eastern elevation of this block.

3.4 The northern block has rounded corners with curved windows of four lights to both storeys. The eastern elevation has a horizontal band of three windows of six lights to both storeys, separated by piers formed of glazed green tiles. In the western elevation, the end window bays accommodate central doors beneath cantilevered canopies. In the northern elevation, two light windows are separated from the curved windows by green-glazed piers. A projecting entrance block occupies the middle of this elevation, with a four light window in the first floor, and an entrance door, reached by two steps flanked by low dwarf walls, with blue-green glazed tile architrave and cantilevered canopy offset to the east on the ground floor, flanked to the west by a further window (no detail observable behind the boarding).

Interior

3.5 The main entrance to the Canteen block is in the southern elevation through a porch with metal-framed double door (Figure 7). The entrance hall has an open-well staircase of three flights leading off to the west, with a metal banister of widely spaced uprights rising from a plinth, linked by four parallel bands following the gradient of the stair (Plate 4). A door to the east leads to cloakrooms and lavatories. To the north, double doors lead to a pillared open area of five and two half bays forming the main canteen, with linoleum flooring and coving to the perimeter and to the principal beams (Plates 5-6). Later stud partitioned offices have been inserted to the left and right of the entrance. The full bays on the east each have a metal-framed window of six lights, with the centre pair opening. The last full bays at each end of the west elevation are occupied by double doored emergency exits. A later projecting partitioned area at the north end of the room defines a servery with hatches through to the kitchen beyond. The servery is flanked by doors to either side giving access to the quarry tiled kitchen at the rear of the building, having glazed ceramic tiles covering the walls (Plate 7). The original layout of the kitchen is uncertain. Inspection hatches in the floor, around the perimeter of the building, give access to a substantial service duct with further hatches built in to the exterior walls.

3.6 From the landing at the top of the principal stairs, a door to the east leads to cloakrooms and lavatories. Double doors to the north lead to a pine floored hall or ballroom of 5½ bays, with tall metal-framed windows to east and west set in the middle of each of the full five bays (the southernmost half bay being blank) (Plates 8-9). The window at the northern end of the west side includes an emergency exit and integral porch. Each window formerly had a radiator mounted beneath (already removed at the time of the present survey). The ceiling is vaulted with a central lantern supported on boxed steel joists braced by horizontal tie rods. The boxing sits on decorative reeded corbels (Plate 10). Marking out for a badminton court (or similar) is still visible on the floor. A stage and proscenium occupy the north end, with a servery to the rear. A single door immediately to the left of the stage gives access to the servery. Double doors to either side of the stage give access to the service area behind. To the right of the emergency exit at the northwest end of the room is a dumb waiter, with its motor housing above, which appears to have been attached to the exterior of the building (Plate 11). It is accessed on the ground floor from the exterior and was probably intended for deliveries.

3.7 The service area divides the ballroom from separate function rooms, understood to have been the managers' dining rooms, accessed from a separate entrance in the north elevation of the building. Here a double doorway within a terrazzo framed porch (Plate 12) leads to an entrance hall with an open-well staircase of three flights, having an unpierced balustrade and moulded wooden handrail, which is raised and ramped up at the corners (Plate 13). A door to the west leads to a gents' lavatory with corner set urinals (Plate 14), while a door to the east, down three steps, leads to a single stall lavatory beneath the stairs. From the first floor landing a parquet floored corridor leads north. To the east is a long room with parquet flooring and a folding partition (Plates 15 and 16) running across the middle, shown in photographs dating to the 1930s or 40s as a common room with easy chairs at one end and a dining table at the other. To the west, a larger room with faux panelling and a parquet floor, has a low platform (Plate 17) in the middle of the east elevation and a bar.

ADMINISTRATION BUILDING

Exterior

3.3 A white painted two storey building in International Modern style built of reinforced concrete in three blocks facing east (Figures 9-10; Plates 19-20). The building is symmetrical with a raised two storey central block flanked by two two-storey wings.

3.4 The central block is recessed to the front and projects to the rear. The front elevation has superimposed pilasters clasping the corners, with reeded panels at the top. The parapet is decorated with alternate fluted and plain panels with a pentagonal panel in the centre. At ground level, a wide doorway with a stepped green-glazed architrave is reached up a wide flight of four steps flanked by a series of curved and stepped planters. It is protected by a cantilevered concrete canopy, faced in yellow-brown glazed tiles, with a full-length planter set back from the front edge. Above this is a six-light metal framed window with a fluted frieze over. The rear elevation has two bands of windows separated by green-glaze tiled piers over-painted in beige (possibly a remnant of wartime camouflage). The first floor band is interrupted by a doorway and the remains of a concrete bridge, offset to the north, formerly linking the administration block with the factory building to the rear. Aligned with this, below the ground floor band, is a further doorway with a tiled architrave also over-painted in beige. A plinth in grey-green glazed brick shaped tiles, laid in stretcher bond, runs along the base.

3.7 The north and south wings are essentially identical but handed, each built in two jointed sections. In the east facing front elevation, the wings curve back to the recessed central block. Two horizontal bands of seven metal-framed windows, with green-glaze tiled piers and surrounds, as seen throughout, also terminate in a curve. In the west facing, rear elevation, are similar horizontal bands of six metal-framed windows, the end windows on the first floor in each wing accommodating a fire exit giving access to metal staircases attached to the exterior (now removed). The glazed window piers have been over painted throughout, as noted in the central block. A plinth in grey-green glazed brick shaped tiles, laid in stretcher bond, runs around both wings.

Interior

3.71 The main entrance to the administration block is situated in the middle of the eastern elevation of the central block. Plate glass doors (now removed) lead to a terrazzo floored lobby flanked by lodges (Plate 21), each fronted with a chromed metal insert, having three glazed panels above and three gridded panels below concealing a radiator, the upper and lower panels separated by a smaller black metal panel with a decorative fluted insert (Plate 18). Two steps lead up to the entrance hall with terrazzo lined walls surmounted by a fluted cornice, and terrazzo floor concealed by thermoplastic tiles and later carpet (Plate 22). The principal staircase is opposite the entrance, at the rear of the hall, flanked by two doors in maple with three central panels filled with decorative glass with a wave pattern (Plate 23). The south door leads to a small cellar beneath the central block only, and the north door leads to an exit on the western side of the building and to toilets located behind the stair well. Similar doors off the hallway, to the north and south of the lobby, give access to the lodges.

3.72 A central corridor leads south from the entrance hall, the walls surmounted by glazed metal-framed panels (Plate 24) above the door line on the western side. The eastern offices

respect the layout of the windows, partitions occurring between them. The western offices have partitions which cross the window openings and the radiators, and may be the result of a later rearrangement (Plate 25). Room 7, on the eastern side of the corridor, at the northern end, is panelled in varnished pine (Plate 26). Room 38, on the western side of the corridor, at the southern end, is panelled in oak (Plate 27). Carpets cover parquet flooring throughout. The ladies' lavatories to the north of Room 32 retain their original decorative tilework (Plate 28).

3.73 A central corridor leads north from the entrance hall. Room 11, on the eastern side of the corridor, at the southern end, is panelled in modern oak. The northern offices show evidence for rearrangement of the original layout, with one large open plan office, Room 19, in the north-west corner (Plate 29).

3.74 The cellar extends beneath the stairwell and incorporates four rooms, three having a coffered concrete ceiling (Plate 30), and the fourth being a shuttered concrete vault with a secure steel safe door (Plates 31 and 32) manufactured by Donald Clerk and Son of Glasgow on 21 June 1934.

3.75 An open-well stair of three flights rises from the entrance hall to the first floor landing. It is lined with terrazzo panels divided into bands of subtly differing colour. The panels are surmounted by a cornice of alternating narrow and wide shallow dentils. The unpierced balustrade is topped with white marble with black and grey patterning. The stairwell is lit by a metal-framed skylight with fifteen panes of frosted glass (now mostly broken) (Plate 33). Archive photographs show that it was originally glazed with etched glass showing a map of the world and the silhouette of an aircraft (Plate 34). It is likely to have been lit originally by natural light but has since been provided with fluorescent tubes.

3.76 The first floor landing is floored in terrazzo, later carpeted over, and lined in scalloped terrazzo panels with a dado rail in similar marble to the banister. On either side of the stairwell open two doors in maple with decorative glass panels and grey terrazzo architraves (as seen elsewhere). The southern door leads to a circular staircase (now dismantled) giving access to the roof. The northern door leads to a passage giving access to toilets and two service rooms, as well as the blocked door to the former bridge leading to the main factory. On the opposite side of the landing, two further doors in maple with a flush central panel replacing the decorative glass seen elsewhere, lead off the landing to the east. Between these is located a radiator enclosure (Plate 35) in marble topped terrazzo. Curving passages lead off the landing to north and south to double doors giving access to central corridors.

3.77 To the east of the landing, accessed by the two doors described above, is the walnut panelled board room seen in many of the contemporary photos of the de Havilland factory (Plates 36-37). A stepped pelmet running around the whole room is a later addition, but the original fluted cornice is still visible above.

3.78 Room 49, accessed from the southern curving passage, is panelled in oak (Plates 38-39).

3.79 The southern corridor off the landing leads to partitioned offices (Plate 40). Rooms 45 – 48 on the eastern side have original glazed metal-framed partitioning on to the corridor, but the intermediate partitioning does not respect the window openings and radiator layout, so is likely

to be a later remodelling. Rooms 41 – 44 are partitioned in studwork with inset windows. The window openings to Rooms 41 and 42 have a distinctive four-step moulding (Plate 41) (also noted in Room 76 on the opposite side of the corridor). Rooms 73 – 75 on the western side of the corridor step in slightly from the adjacent offices but respect the exterior window layout and have no corridor windows. The studwork partitioning suggests a later remodelling. The presence of skylights suggests that part of this area was originally open plan and this is supported by an archive photograph showing the Sheet Metal design office (Plate 42). Corridor windows reappear beyond the door to Room 73, and the presence of coving suggests that this may represent an original subdivision. Parquet flooring throughout.

3.20 The northern corridor off the central landing leads to, apparently, executive offices. High level metal-framed lights on the western side suggest that the corridor partitioning is original but the room partitions do not respect the window and radiator layout and so may represent later remodelling. Areas of stepped moulding (as noted above) were noted on the southern elevation of Room 54, and in the corridor opposite. Room 52 is panelled in pine (a later addition) (Plate 43), and Room 51, with a curving corner window, is half-panelled in oak veneer (Plate 44).

4. Discussion

4.1 The two listed buildings which form the focus of the present study have remained virtually unused since aircraft manufacturing ceased at Hatfield in 1993. In the intervening time they have steadily deteriorated, partially through neglect and more recently as a result of vandalism. The proposal to refurbish the buildings as a new area police headquarters promises a new lease of life for two fine examples of the International Modern style of architecture, which were noted landmarks on the Great North Road out of London.

4.2 The external appearance of the buildings has not changed significantly since they were built. Evidence for paint having been applied over the green-glazed ceramic decoration of the window embrasures can still be seen, particularly on the rear elevation of the Admin block, and a number of additional fire exits have been created. Otherwise, the original photographs obtained from the archives of BAe Systems (successors to the de Havilland Aircraft Company) show no great differences to those taken as part of this record.

4.3 The Canteen block also appears to be largely unaltered internally. On the ground floor, lavatories and kitchens have been modernised with little evidence of original features surviving, the serveries have been partitioned, and stud-partitioned offices have been created at the southern end of the main canteen. On the first floor, the layout and fixtures seem to have been largely preserved and archive photos show no great differences to those taken as part of this record.

4.4 The original entrance into the Administration block was through a pair of glazed metal doors, possibly in polished brass, with diagonally laid decorative glazing bars dividing each door into five panels, with a two pane panel above, and a five pane panel on each side (Plate 45). This arrangement was later changed for plate glass, which had been removed by the time that this record was made. Throughout the building original flooring had been covered over. The patterned terrazzo floor shown in archive photographs of the entrance hall (Plate 46) was first overlaid with thermoplastic tiles (possibly in the 1960s), and later carpeted. Elsewhere, original parquet flooring has also been carpeted.

4.5 The original layout of the offices on both floors is uncertain but it seems likely that there were open plan offices at the northern end of the ground floor, and at both the northern and southern ends of the first floor. Archive photographs suggest that the ground floor offices were occupied by administration staff (Plate 47), with Sheet Metal occupying first floor south (Plate 30) and engineering first floor north (Plate 48). The dates that the partitioning was installed cannot easily be ascertained.

Conclusion

4.6 The present study provides a written, drawn and photographic record of the former Canteen and Administration blocks for Hatfield Aerodrome, before the start of renovation and refurbishment works which will convert them to a new use. By comparison with photographs from the archives of BAe Systems, and maps which show the changing layout of the aerodrome site since the 1930s, it is clear that the buildings have undergone only superficial changes since their construction. It is expected that the proposed development will largely retain the external appearance of the buildings and key elements of the interiors.

5. Sources Consulted

ARCHIVES

BAe Systems Archives, Heritage Department, TAG Farnborough Airport
Monro & Partners Archive, Mitchell Library, Glasgow City Library Service

BIBLIOGRAPHY

- Birtles, P.J., 1993. *Hatfield Aerodrome: A History*. British Aerospace Regional Aircraft Ltd.
- Brown, N. and Glazebrook, J. (eds.) 2000. *Research and Archaeology: a framework for the Eastern Counties, 2. Research Agenda and Strategy*. East Anglian Archaeology Occasional Paper No.8
- English Heritage, 2006. *Understanding Historic Buildings: a guide to good recording practice*.
- Glazebrook, J. (ed.) 1997. *Research and Archaeology: a framework for the Eastern Counties, 1. Resource Management*. East Anglian Archaeology Occasional Paper No.3
- Hillelson, D., 2006, *Plot 1500, Comet Way, Hatfield: Project Design*. Heritage Network.
- Lever, J., & Harris, J., 1993, *Illustrated Dictionary of Architecture, 800-1914*. Faber
- Smith, G., 1999. *Herefordshire and Bedfordshire Airfields in the Second World War*. Countryside Books
- Stokes, P., 1987. *From Gypsy to Gem*. Rolls-Royce Heritage Trust, Historical Series no.10

WEBSITES

www.imagesofengland.org.uk English Heritage List of Buildings of Special or Historic Interest

6. Illustrations

Figure 1	Site Location
Figure 2	Site Layout
Figure 3	Hatfield Aerodrome, c. 1930
Figure 4	Hatfield Aerodrome, 1934
Figure 5	Hatfield Aerodrome, c. 1934-45
Figure 6	Hatfield Aerodrome, Post-1945
Figure 7	Canteen Block: Plans
Figure 8	Canteen Block: Elevations
Figure 9	Admin Block: Plans
Figure 10	Admin Block: Elevations
Plate 1	Ornamental pond and fountain
Plate 2	Canteen block, southern and eastern elevations
Plate 3	Canteen block, northern and western elevations
Plate 4	Canteen block, southern staircase
Plate 5	Canteen block, ground floor canteen looking N
Plate 6	Canteen block, ground floor canteen looking S
Plate 7	Canteen block, kitchen, looking NW
Plate 8	Canteen block, first floor hall, looking N
Plate 9	Canteen block, first floor hall, looking S
Plate 10	First floor hall, decorative corbel and boxed joist
Plate 11	First floor hall, emergency exit and dumb waiter
Plate 12	Terrazo framed porch
Plate 13	Canteen block, northern (managers') staircase
Plate 14	Corner set urinals
Plate 15	Folding partition
Plate 16	Common room
Plate 17	Low platform
Plate 18	Decorative fluted insert
Plate 19a	Western elevation shortly after completion
Plate 19b	Western elevation as at 22 November 2006
Plate 20 (top)	Eastern elevation of Administration Block
Plate 20 (bottom left)	Northern elevation of Administration Block
Plate 20 (bottom right)	Southern elevation of Administration Block
Plate 21	Lobby and lodges, looking E
Plate 22	Entrance hall and principle staircase, looking W
Plate 23	Decorative glass in wave pattern
Plate 24	Glazed, metal framed panels
Plate 25	Administration block, southern corridor, typical office
Plate 26	Administration block, Room 7, N elevation
Plate 27	Administration block, Room 38, E elevation
Plate 28a & b	Ground floor, ladies' lavatories, details
Plate 29	Administration block, Room 19, S elevation
Plate 30	Administration block, cellar, coffered ceiling
Plate 31	Steel safe door
Plate 32	Safe door, metal plate
Plate 33	Administration block, skylight above stairwell
Plate 34	Skylight above staircase with original etched glazing
Plate 35	Radiator enclosure
Plate 36	Administration block, boardroom, looking S
Plate 37	Boardroom in the 1930s
Plate 38	Administration block, Room 49, E elevation

Plate 39..... Administration block, Room 49 in the 1930s
Plate 40..... Upper floor, S corridor, looking S
Plate 41..... Four step moulding
Plate 42..... Sheet Metal design office
Plate 43..... Administration block, Room 52, N elevation
Plate 44..... Administration block, Room 51, E elevation
Plate 45..... Administration block, original entrance doors, 1930s
Plate 46..... Administration block, entrance hall terrazzo floor, 1930s
Plate 47..... Administration block, admin office, 1930s
Plate 48..... Administration block, engineering office, 1930s

Appendix 1

Black and White Photographic Log

Appendix 2

Digital Photographic Log

Interior Record

Frame No.	Description	Facing
IMG_6119	Canteen, G floor, Kitchen, W half	W
IMG_6120	Canteen, G floor, Kitchen, E half	NE
IMG_6123	Canteen, G floor, Kitchen, S end	SE
IMG_6126	Canteen, G floor, Dining room	SW
IMG_6129	Canteen, G floor, Dining room	SW
IMG_6134	Canteen, G floor, Dining room	S
IMG_6137	Canteen, G floor, Dining room	S
IMG_6138	Canteen, G floor, Dining room	SE
IMG_6141	Canteen, G floor, Dining room	SE
IMG_6146	Canteen, G floor, Window detail	W
IMG_6149	Canteen, G floor, Dining room	N
IMG_6152	Canteen, G floor, Dining room	N
IMG_6155	Canteen, G floor, S staircase	W
IMG_6159	Canteen, G floor, S staircase, upper level	E
IMG_6167	Canteen, 1st floor, Ballroom	N
IMG_6170	Canteen, Ballroom, decorative plaque	
IMG_6171	Canteen, Ballroom, wall light	
IMG_6174	Canteen, Ballroom, wall light	
IMG_6177	Canteen, Ballroom, reeded corbel	
IMG_6182	Canteen, Ballroom, boxed roof truss	
IMG_6186	Canteen, 1st floor, Ballroom,	S
IMG_6189	Canteen, 1st floor, Ballroom	S
IMG_6192	Canteen, Ballroom, fire door & dumb waiter	
IMG_6195	Canteen 1st floor, NW manager's dining room	NW
IMG_6198	Canteen 1st floor, NW manager's dining room	NE
IMG_6199	Canteen, reeded radiator enclosure flap	
IMG_6202	Manager's dining room, doorway	
IMG_6205	Canteen, Doorway off N corridor	
IMG_6210	Canteen, G floor, N entrance,	E
IMG_6213	Canteen, G floor, Gent's lavatory adj. N entrance	N
IMG_6216	Canteen, G floor, Gent's lavatory, light switch	
IMG_6217	Canteen, G floor, N staircase	W
IMG_6220	Canteen, G floor, N staircase	W
IMG_6223	Canteen, G floor, N staircase, upper level	
IMG_6226	Canteen, G floor, N staircase, upper level	
IMG_6229	Canteen, 1st floor, , Manager's Common Room	NW
IMG_6234	Canteen, Manager's dining room, radiator enclosure	
IMG_6237	Canteen, 1st floor, Ladies' lavatories, original tiling	
IMG_6240	Canteen, 1st floor, Ladies' lavatories, door detail	
IMG_6243	Canteen, 1st floor, Ladies' lavatories	
IMG_6246	Admin block, 1st floor, S corridor	N
IMG_6249	Admin block, 1st floor, S corridor	N
IMG_6250	Admin block, 1st floor, Room 46	E

Frame No.	Description	Facing
IMG_6253	Admin block, 1st floor, Room 47	E
IMG_6256	Admin block, 1st floor, Room 47	W
IMG_6259	Admin, S upper corridor, Concrete stanchion opposite Room 46	
IMG_6262	Admin block, 1st floor, Room 75	NW
IMG_6265	Admin block, 1st floor, Room 75	
IMG_6268	Admin, S upper corridor, moulded ceramic window sill, detail	
IMG_6273	Admin block, 1st floor, S corridor	
IMG_6279	Admin block, 1st floor, S corridor	S
IMG_6280	Admin block, 1st floor, Board Room	SW
IMG_6283	Admin block, 1st floor, Board Room	NW
IMG_6286	Admin block, 1st floor, Board Room	E
IMG_6289	Admin block, 1st floor, Board Room	E
IMG_6293	Admin block, Ghost of company name above main entrance	
IMG_6296	Admin block, Ghost of company name above main entrance	
IMG_6298	Ornamental pond opposite main entrance to Admin block	
IMG_6302	Ornamental pond opposite Admin Block entrance	
IMG_6309	Admin block, 1st floor, Room 49	SE
IMG_6310	Admin block, 1st floor, Room 49	NE
IMG_6313	Admin block, 1st floor, Room 49	W
IMG_6318	Admin block, 1st floor, Room 51	SE
IMG_6319	Admin block, 1st floor, Room 51	SW
IMG_6322	Admin block, 1st floor, Room 52	NW
IMG_6325	Admin block, 1st floor, Room 52	NE
IMG_6328	Admin block, 1st floor, Room 52, radiator grill	E
IMG_6333	Admin block, 1st floor, Room 52, wood panelling detail	
IMG_6336	Admin block, 1st floor, N corridor	N
IMG_6339	Admin block, 1st floor, N corridor	S
IMG_6340	Admin block, 1st floor, Passage & landing	S
IMG_6343	Admin block, 1st floor, Passage & landing	S
IMG_6349	Admin block, 1st floor, Landing	S
IMG_6352	Admin block, 1st floor, N door to board room	NE
IMG_6357	Admin block, 1st floor, Skylight above stairwell	SW
IMG_6358	Admin block, 1st floor, Skylight above stairwell	W
IMG_6361	Admin block, 1st floor, Head of main staircase	
IMG_6364	Admin block, 1st floor, Head of main staircase	
IMG_6367	Admin block, 1st floor, Head of main staircase	
IMG_6370	Admin block, 1st floor, Main staircase from 1st half landing	
IMG_6373	Admin block, 1st floor, Main staircase from 1st half landing	
IMG_6377	Admin block, 1st floor, Main staircase from 1st half landing	
IMG_6379	Admin block, 1st floor, Main staircase from 1st half landing	
IMG_6634	Admin block, G floor, S corridor	S
IMG_6637	Admin block, G floor, S corridor	N
IMG_6640	Admin block, G floor, S corridor	N
IMG_6641	Admin block, G floor, Room 38	S
IMG_6644	Admin block, G floor, Room 38	S
IMG_6647	Admin block, G floor, Room 38	S
IMG_6650	Admin block, G floor, Room 38	W
IMG_6653	Admin block, G floor, Room 38	N
IMG_6656	Admin block, G floor, Room 38	E
IMG_6659	Admin block, G floor, Room 1	N

Frame No.	Description	Facing
IMG_6662	Admin block, G floor, Room 1	N
IMG_6665	Admin block, G floor, Room 1	NE
IMG_6668	Admin block, G floor, Room 1	S
IMG_6671	Admin block, G floor, Room 37	W
IMG_6674	Admin block, G floor, Room 35	W
IMG_6677	Admin block, G floor, Room 35	E
IMG_6680	Admin block, G floor, Room 5	E
IMG_6683	Admin block, G floor, Room 5	SE
IMG_6688	Admin block, G floor, Room 5	W
IMG_6689	Admin block, G floor, Room 5	N
IMG_6694	Admin block, G floor, Room 7	N
IMG_6697	Admin block, G floor, Room 7	N
IMG_6700	Admin block, G floor, Room 7	SE
IMG_6701	Admin block, G floor, Room 7	S
IMG_6704	Admin block, G floor, Room 7	W
IMG_6707	Admin block, G floor, WC adjacent Room 32,	W
IMG_6710	Admin block, G floor, WC adjacent Room 32,	NW
IMG_6713	Admin block, G floor, WC adjacent Room 32,	NW
IMG_6716	Admin block, G floor, WC adjacent Room 32,	W
IMG_6719	Admin block, G floor, WC adjacent Room 32,	NW
IMG_6724	Admin block, G floor, WC adjacent Room 32, S cubicle	S
IMG_6725	Admin block, G floor, WC adjacent Room 32, N cubicle	W
IMG_6728	Admin block, G floor, WC adjacent Room 32, S cubicle door	S
IMG_6734	Admin block, G floor, WC adj. Room 32, door handle detail	
IMG_6737	Admin block, G floor, WC adj. Room 32, door furniture detail	
IMG_6742	Admin block, G floor, N corridor	N
IMG_6743	Admin block, G floor, Room 19	N
IMG_6752	Admin block, G floor, Room 19	E
IMG_6755	Admin block, G floor, Room 19	SE
IMG_6758	Admin block, G floor, Room 19	S
IMG_6761	Admin block, G floor, Room 19	N
IMG_6766	Admin block, G floor, N corridor	S
IMG_6769	Admin block, G floor, N corridor	S
IMG_6770	Admin block, G floor, Room 11	S
IMG_6773	Admin block, G floor, Room 11	E
IMG_6776	Admin block, G floor, Room 11	SE
IMG_6779	Admin block, G floor, Entrance Hall	N
IMG_6782	Admin block, G floor, Entrance Hall	S
IMG_6788	Admin block, G floor, Entrance Hall	E
IMG_6791	Admin block, G floor, Entrance Hall	W

Digital Photographic Log

Exterior Record

Frame No.	Description	Facing
Un-numbered	Admin Block, East front - composite	W
PB220001	Canteen, S Exterior elevation	N
PB220002	Canteen, S & E exterior elevation	NW
PB220003	Canteen, S & E exterior elevation	NW
PB220004	Canteen, S & E exterior elevation	NW
PB220005	Canteen, E exterior elevation, S end	SW
PB220006	Canteen, E exterior elevation, S end	SW
PB220007	Canteen, E exterior elevation, N end	W
PB220008	Canteen, N & E elevations	SW
PB220009	Canteen, N & E elevations	SW
PB220010	Admin, S & E exterior elevations	NW
PB220011	Admin, S & E exterior elevations	NW
PB220012	Admin, E exterior elevation, S end	W
PB220013	Admin, E exterior elevation, S end	W
PB220014	Admin, E exterior elevation, S middle	W
PB220015	Admin, E exterior elevation, middle	W
PB220016	Admin, E exterior elevation, middle	W
PB220017	Admin, Exterior elevation, N middle	W
PB220018	Admin, E exterior elevation N end	W
PB220019	Admin, E exterior elevation	SW
PB220020	Admin, E exterior elevation	SW
PB220021	Admin, E exterior elevation, N end	SW
PB220022	Eastern elevations	S
PB220023	E elevations & apron	S
PB220024	Apron	S
PB220025	Admin, N exterior elevation	E
PB220026	Admin, N exterior elevation	W
PB220027	Admin, N exterior elevation	E
PB220028	Admin, W exterior elevation, N end	E
PB220029	Admin, W exterior elevation, middle	E
PB220030	Admin, W exterior elevation, S end	E
PB220031	Canteen, W & N exterior elevations	SE
PB220032	Admin, W exterior elevation	ENE
PB220033	Admin, W exterior elevation	ENE
PB220034	Canteen, W & N exterior elevations	SE
PB220035	Canteen, W exterior elevation	E
PB220036	W exterior elevations, S end	E
PB220037	W exterior elevations, S end	ENE
PB220038	W exterior elevations, S end	NE
PB220039	W & S exterior elevations	NE
PB220040	Admin, W & S exterior elevations	NE
PB220041	Canteen, W & N exterior elevations	SE
PB220042	Admin, S exterior elevation	SE
PB220043	Admin, S exterior elevation detail	SE
PB220044	Canteen, N & E exterior elevations	SW
PB220045	Admin, E & S exterior elevations	NW
PB220046	Canteen, N & E exterior elevations	SSW

Frame No.	Description	Facing
PB220047	Admin, main entrance	SW
PB220048	Admin, central block	SW
PB220049	Admin, central block	SW
PB220050	Admin, central block	SW
PB220051	Admin, central block, base	W
PB220052	Admin, central block, upper	W

Digital Photographic Log

Exterior details

Frame No.	Description	Facing
PB220053	Admin block, construction joint to N of main entrance	NW
PB220054	Admin block, construction joint in N half of E elevation	NW
PB220055	Admin block, ceramic pier between windows, and ceramic sill	W
PB220056	Admin block, plinth of brick-shaped ceramic tiles	W
PB220057	Admin block, NW corner, remains of fire-escape	SE
PB220058	Ditto	
PB220059	Admin block, over-painted window pier on W elevation	E
PB220060	Admin block, N half of W elevation, inserted fire exit	SE
PB220061	Admin block, site of bridge to factory building	E
PB220062	Admin block, hatch to service duct	E
PB220063	Admin block, SW corner, remains of fire-escape	SE
PB220064	Admin block, southern entrance	NE
PB220065	Ditto	
PB220066	Manhole between Canteen and Admin blocks	-
PB220067	Canteen block, northern entrance	SE
PB220068	Canteen block, exposed concrete reinforcement	E
PB220069	Ditto	
PB220070	Canteen block, blocked window to northern under-stairs lavatory	E
PB220071	Canteen block, hatch to service duct	E
PB220072	Canteen block, W elevation, northern entrance to kitchen	SE
PB220073	Canteen block, W elevation, southern entrance to kitchen	SE
PB220074	Canteen block, duct leading to factory	E
PB220075	Canteen block, W elevation, bottom access to dumb waiter	E
PB220076	Canteen block, dumb waiter and emergency exits	E
PB220077	Canteen block, call button for dumb waiter	E
PB220078	Canteen block, controls for dumb waiter	S
PB220079	Canteen block, W elevation, emergency exits	NE
PB220080	Canteen block, southern emergency exit from main canteen	E
PB220081	Canteen block, E elevation, over-painted window pier	NW
PB220082	View along access road to E of Canteen block	N
PB220083	Ditto	NNE
PB220084	View of landscaped apron to E of Canteen block	NE
PB220085	View of landscaped apron to E of Canteen block	E

Digital Photographic Log

Admin block interior details

Frame No.	Description	Facing
PA260061	First floor, S corridor, exterior of Room 41	S
PA260062	First floor, S corridor, exterior of Room 41 – stepped moulding	S
PA260063	First floor, S corridor, coving return outside Room 73	N
PA260064	Ground floor, office doorway off Room 19	E
PA260065	Room 19, skirting & architrave detail	E
PA260068	Cellar, coffered ceiling	NE
PA260069	Ditto	
PA260070	Cellar, strong room	SE
PA260071	Ditto	
PA260072	Cellar, plaque on strong room door	-
PA260074	Ditto	
PA260075	Ditto	
PA260076	Cellar, strong room door	-
PA260077	Lobby, N lodge, chromed insert panel	N
PA260078	Ditto	
PA260079	Ditto	
PA260080	Ditto	
PA260081	Entrance hall, maple veneered door to cellar	W
PA260082	Entrance hall, maple veneered door to cellar – patterned glass	W
PA260083	Entrance hall, maple veneered door to cellar	W
PA260084	Corridor off entrance hall to W entrance	W
PA260085	Utility room adjacent to W entrance	SW
PA260086	Over-painted tiling to lavatories behind entrance hall	-
PA260087	Ditto	
PA260088	Ditto	
PA260089	Ditto	
PA260090	Ditto	
PA260091	Stepped ceramic architrave to main entrance	S
PA260092	Ditto	
PA260093	Ditto	

Appendix 3

Index of Historical Photographs from BAE SYSTEMS Archive

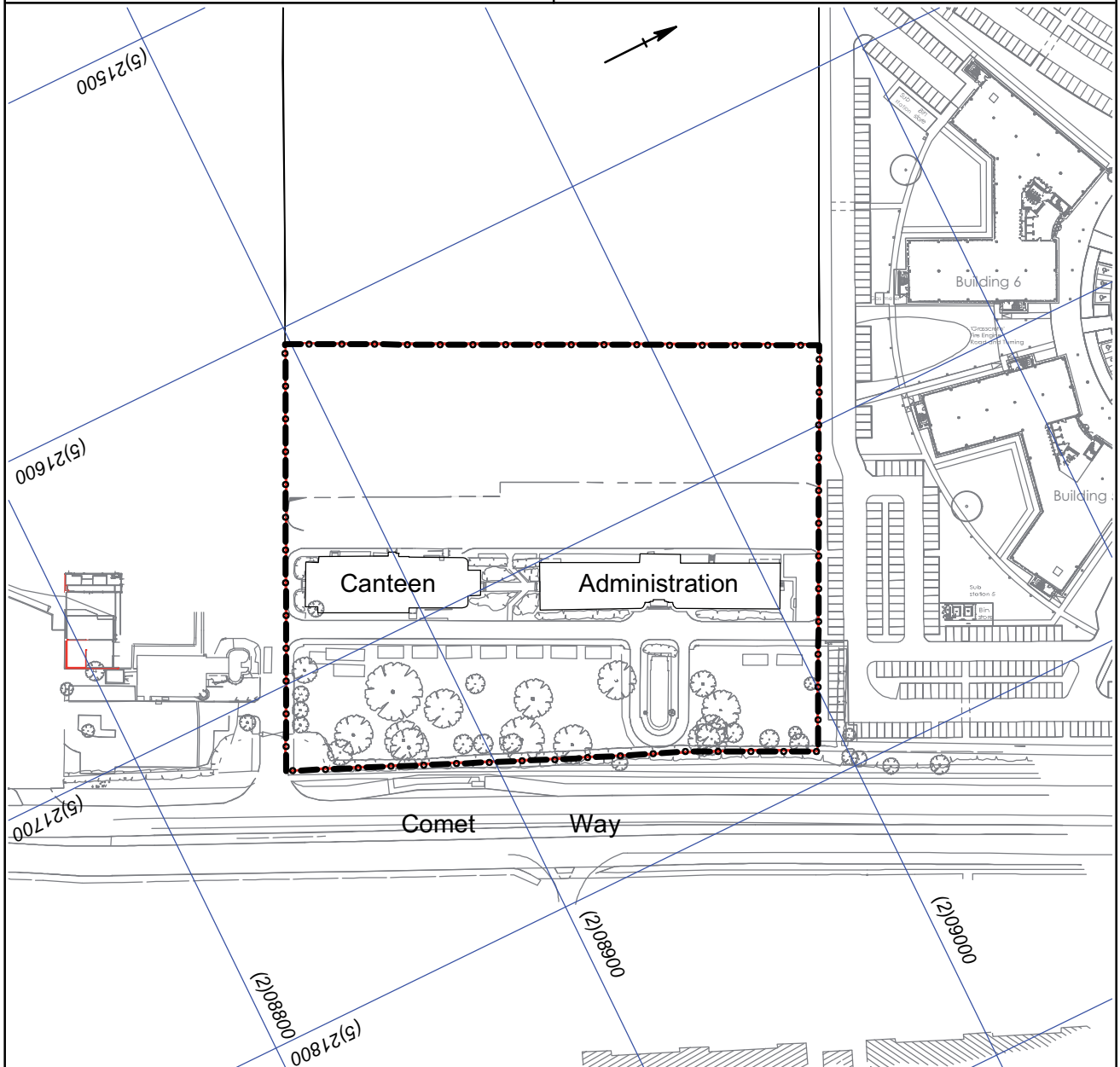
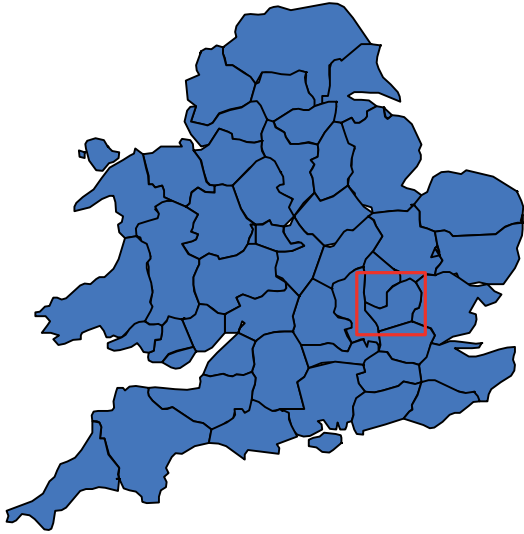
Photographer	Ref.	Description	Date	Comments
Aerofilms	47563	Aerial view	?1930s	
CN	3215n	Admin entrance	Undated	?mid 1980s
CN	3226d	Aerial view	Undated	?mid 1980s
CN	3576g	Aerial view	Undated	?mid 1980s
CN	3576r	Aerial view	Undated	?mid 1980s
CN	3580n	Aerial view	Undated	?mid 1980s
CN	4002w	Aerial view	Undated	?mid 1980s
CN	4058a	Aerial view	Undated	?mid 1980s
CN	4081-11	Admin	Undated	?mid 1980s
CN	6019a	Aerial view	Undated	?mid 1980s
CN	6902a	Aerial view	Undated	?mid 1980s
DH	2208b	Internal, stairs	Undated	?1930s
DH	4107	View of factory on Empire Day	24/05/1949	
DH	4124C	Ballroom looking N	29/06/1949	
DH	4174B	Ballroom looking S	29/06/1949	
DH	4539A	Canteen – children’s party	21/01/1950	
DH	4539C	Ballroom – children’s party	21/01/1950	
DH	15059s	Directors in Board Room	11/11/1937	
DH	18156c	Aerial view	Undated	?1930s
DH	21686-20a	Aerial view	Undated	?1950s
E.O.Hoppé	21119 (60)	Skylight above main stairs	Early 1930s	
Fox	26876	Admin	Undated	
Fox	26877	Admin entry	Undated	
Fox	29332	Admin entry	Undated	
Fox	29929	Internal, office	Undated	
Fox	29970	Common Room looking SE	Undated	Probably NE of canteen block
Fox	29933	Common Room looking N	Undated	
Fox	29934	Panelled corner office	Undated	
Fox	29936	Secretary’s office	Undated	
Fox	29938	Board room	Undated	
Fox	29939	Panelled office	Undated	On E side of bldg
Fox	29951	Oak panelled corner office	Undated	
Fox	29977	Panelled office	Undated	
Greville	11511	Admin front	Undated	
London & Provincial Photographers	(2)	Administration office	Early 1930s	G floor N
	(7)	Engineering office	Early 1930s	? First floor N
	(10)	Director’s office	Early 1930s	
	(13)	Sheet metal and tank section	Early 1930s	First floor S

Photographer	Ref.	Description	Date	Comments
SC	9040	Admin entrance by night	Undated	
S & G	485085	Arial view	Undated	
Sydney Newbery	T69381	Admin office	Early 1930s	N end of building
Sydney Newbery	T69382	Internal, dining room	Undated	
Sydney Newbery	70025	Admin front	Undated	
DH	1104A	Admin block in camouflage	21/08/1943	
DH	1104B	Canteen in camouflage	21/08/1943	
DH	1126A	Canteen interior	06/09/1943	
DH	1126B			
DH	1126C			
DH	1152	Admin entrance in camouflage	25/09/1943	Memorial to G.deHavilland
DH	3562B	Mr Kennington erecting plaque	29/09/1948	
DH	3635A	Plaque in place in front hall	29/09/1948	
DH	7057g	Admin night	Undated	
DH	7099l	Admin entrance	Undated	
DH	7274i	Admin entry	Undated	
?	F00318-15	Aerial view	Undated	

THE HERITAGE NETWORK LTD

Plot 1500, Comet Way, Hatfield

HN624

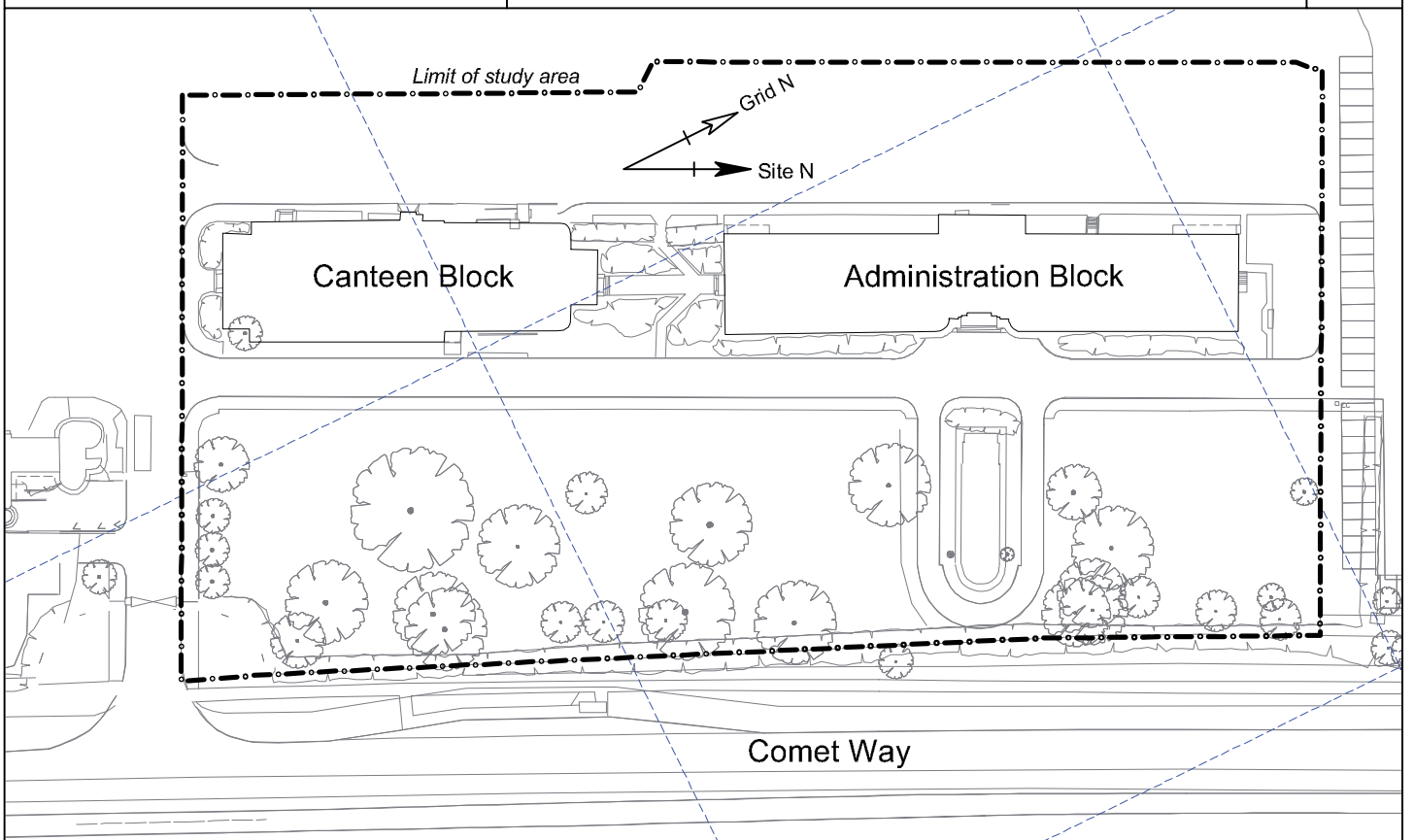


Site Location

Scale 1:2000

Reproduced from the Ordnance Survey with the permission of the controller of Her Majesty's Stationery Office, Licence no.AL100014861

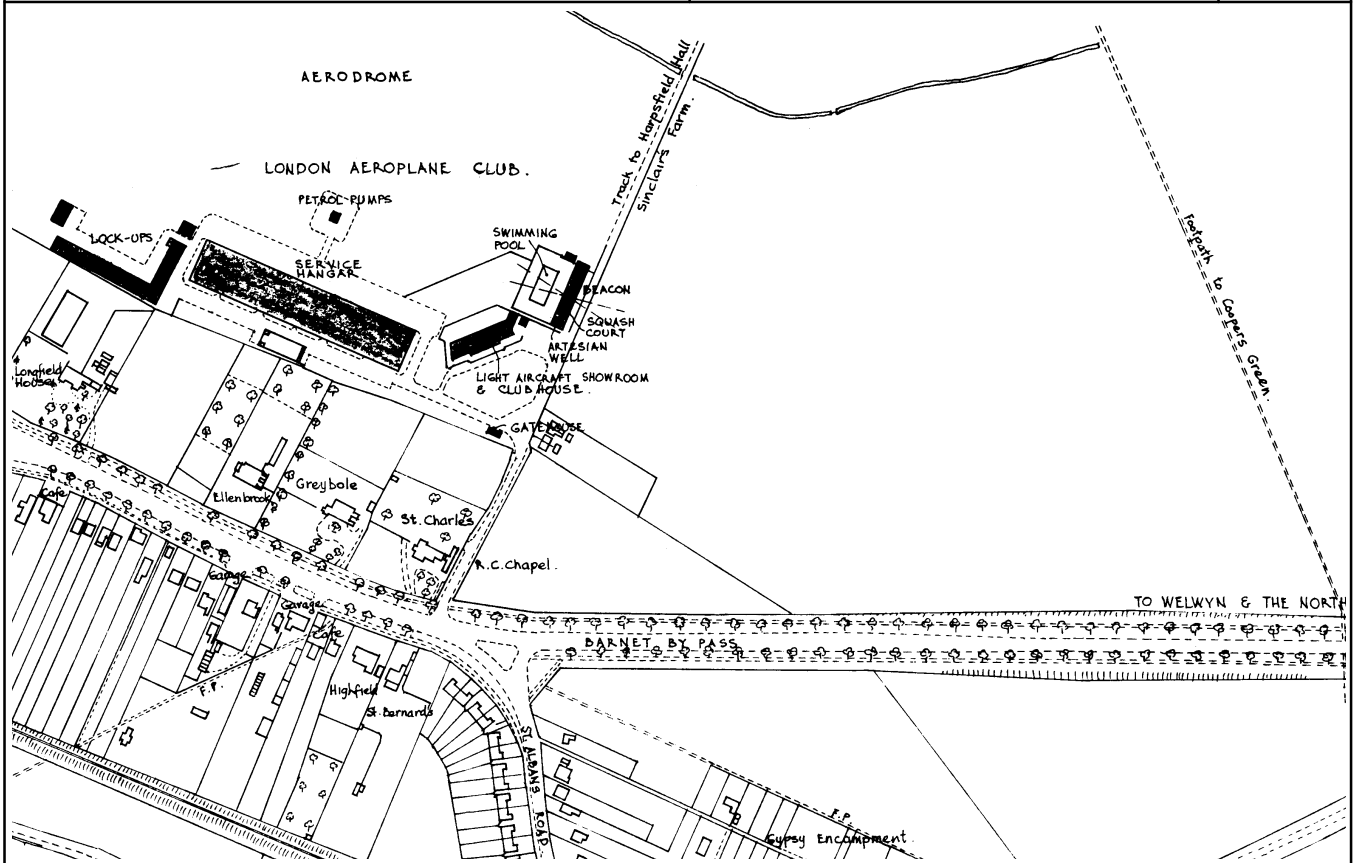
Figure 1



Site Layout

Scale 1:750

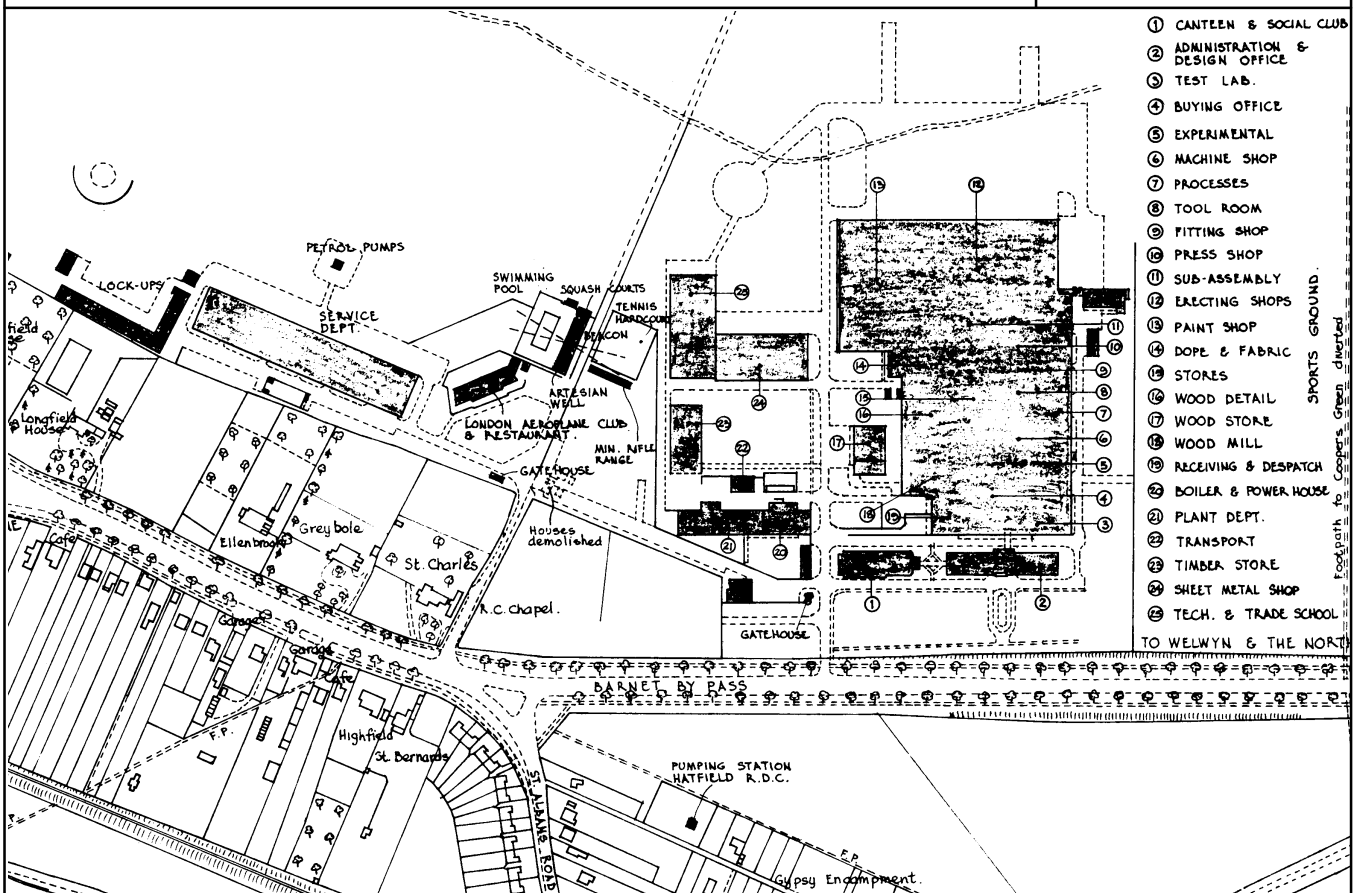
Figure 2



Hatfield Aerodrome, c.1930
(from Hatfield This Century, 1992, reproduced in Birtles 1993)

Scale 1:5000

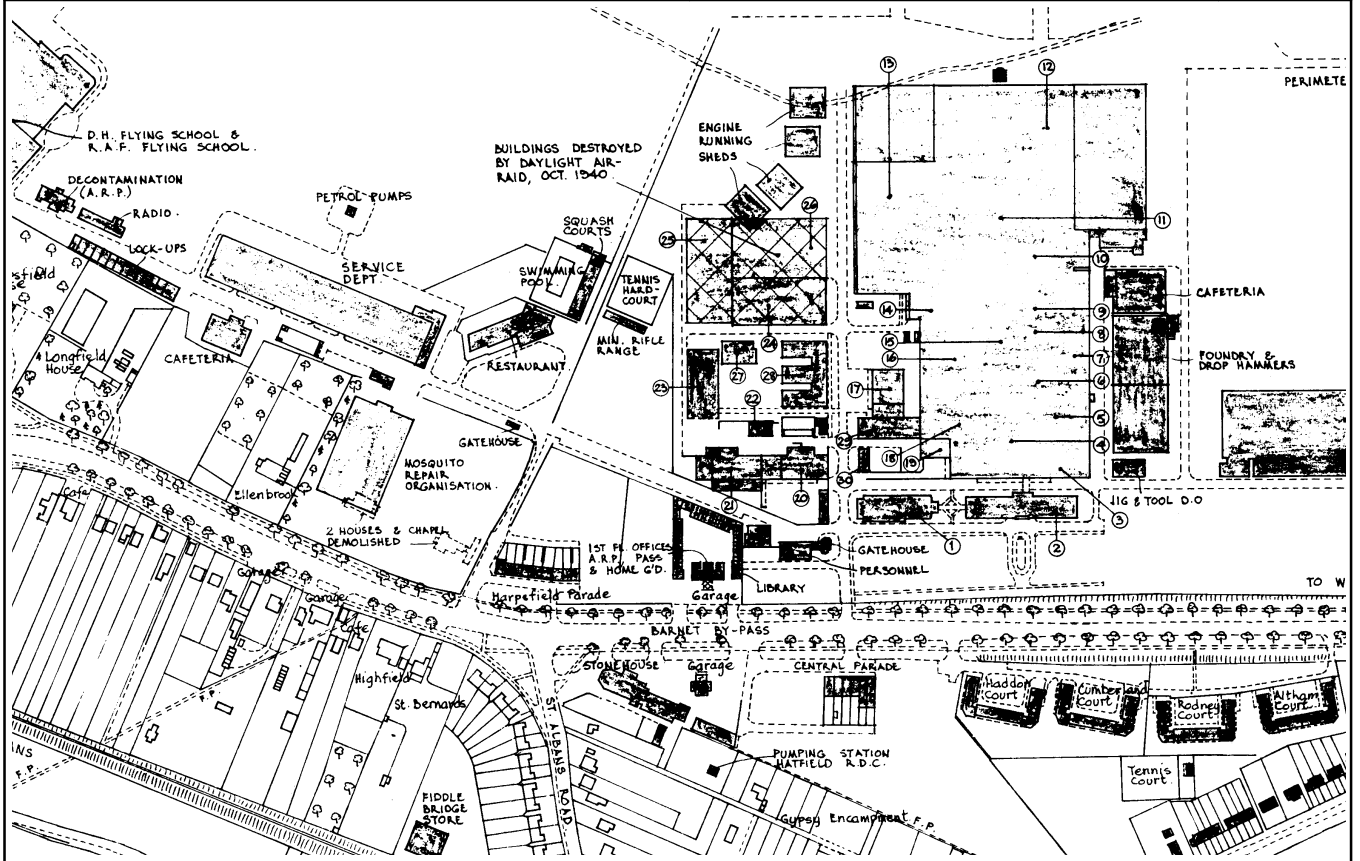
Figure 3



Hatfield Aerodrome, 1934
(from Hatfield This Century, 1992, reproduced in Birtles 1993)

Scale 1:5000

Figure 4

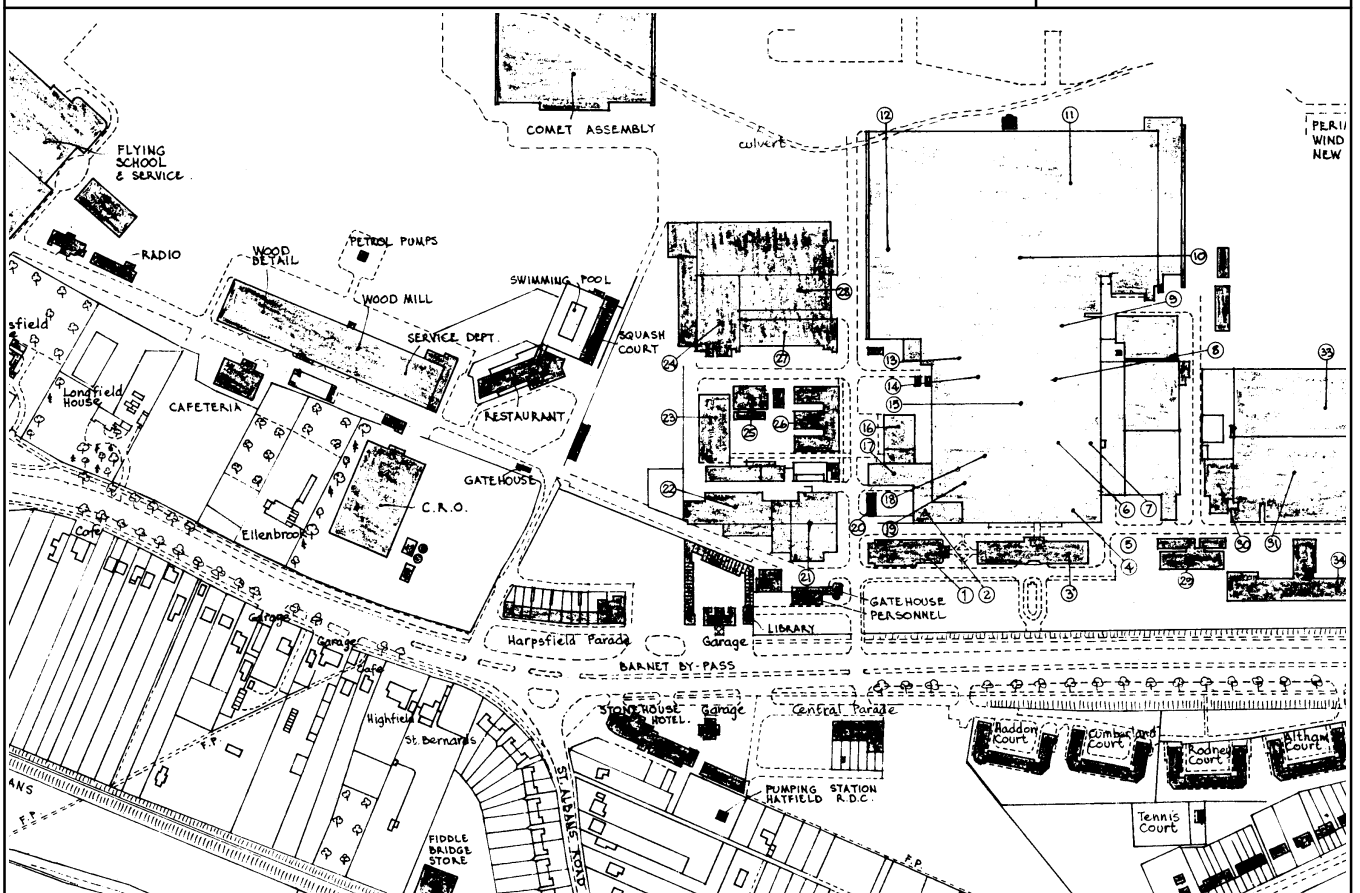


Hatfield Aerodrome, c.1934-45

(from Hatfield This Century, 1992, reproduced in Birtles 1993)

Scale 1:5000

Figure 5



Hatfield Aerodrome, Post-1945

(from Hatfield This Century, 1992, reproduced in Birtles 1993)

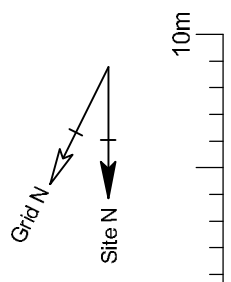
Scale 1:5000

Figure 6



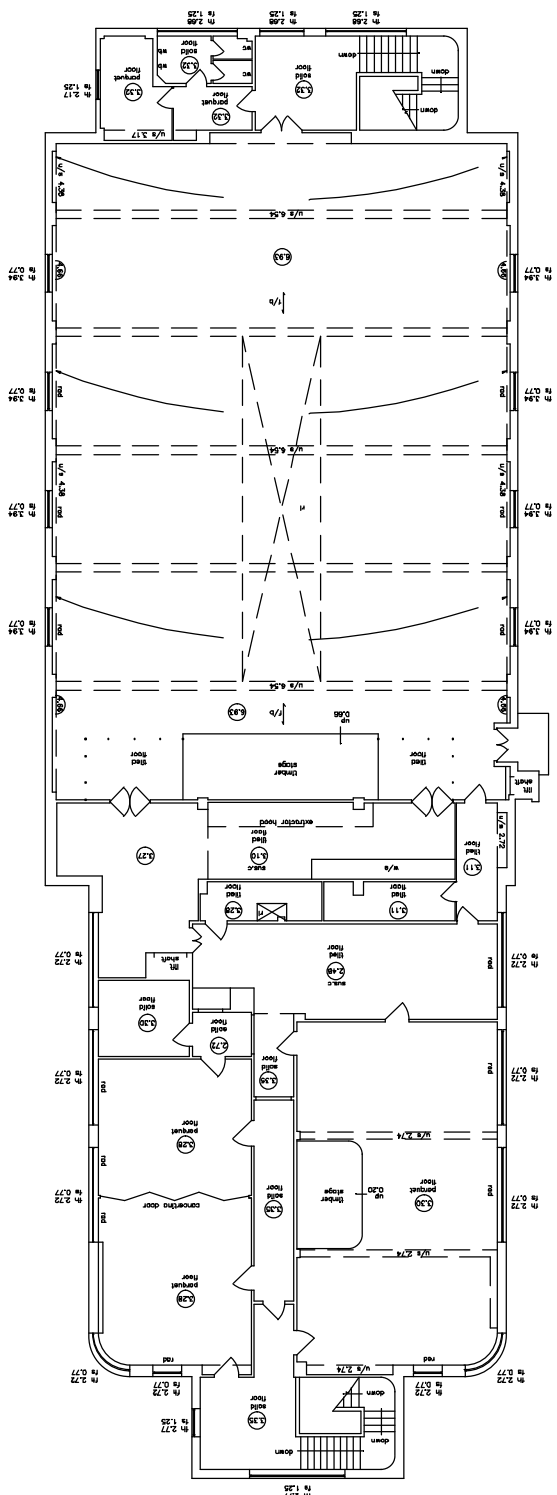
Plot 1500, Comet Way
Hatfield, Herts.
HN624

Canteen Block: Plans
(Courtesy Midland Survey Ltd)

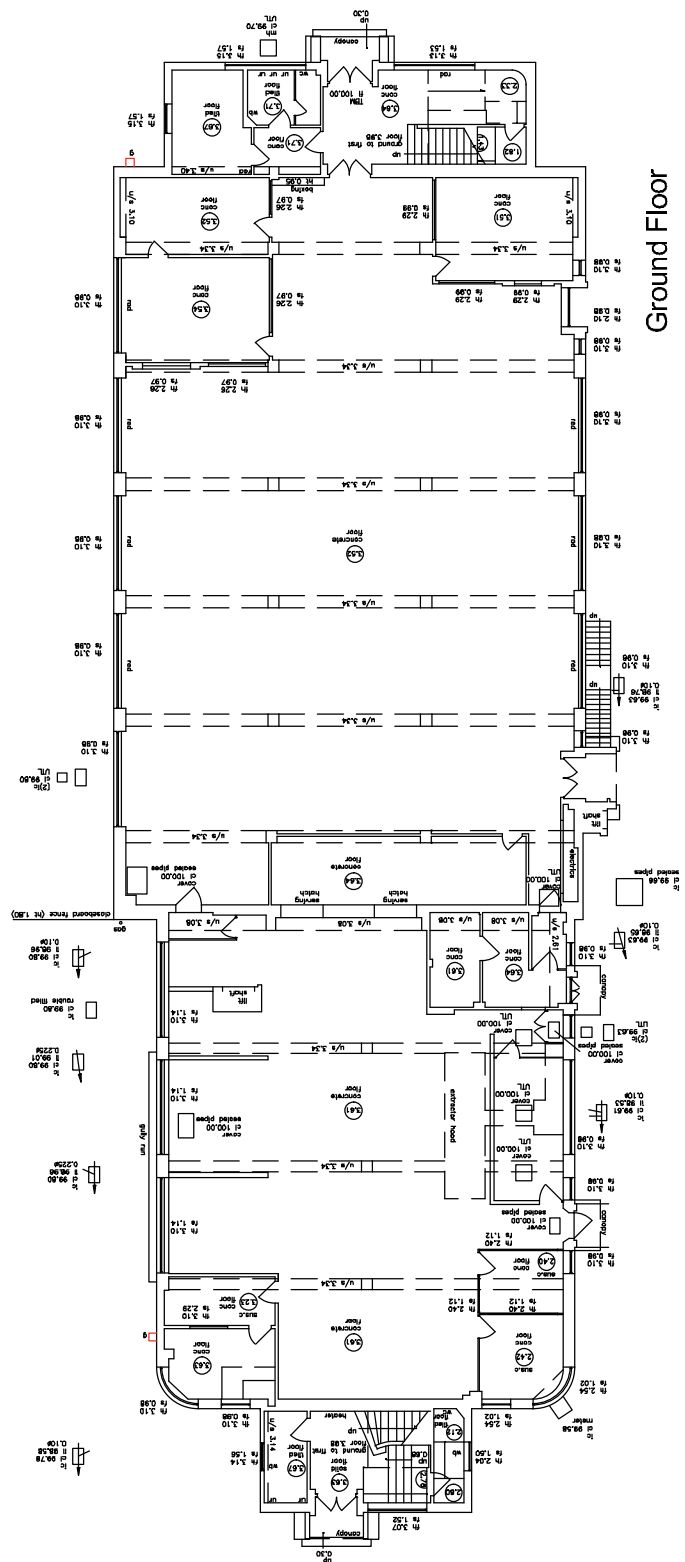


Scale 1:200

Figure 7



First Floor

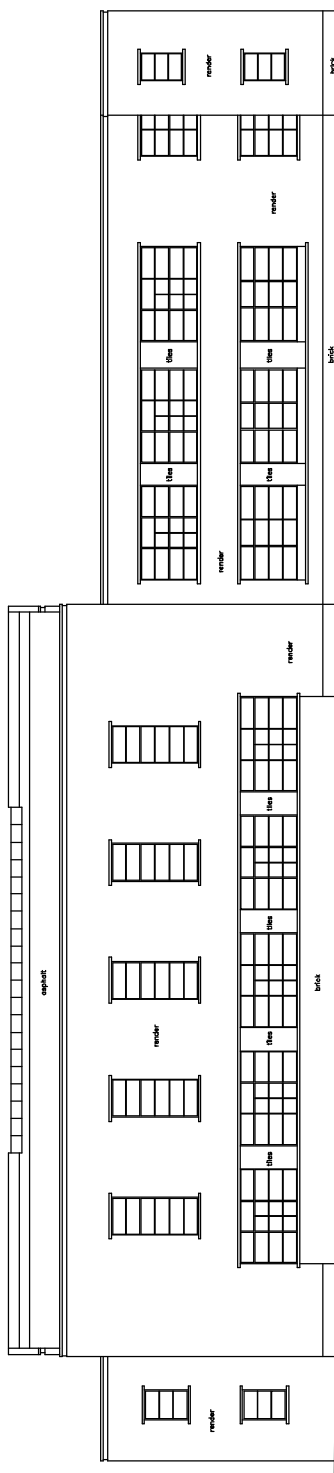


Ground Floor



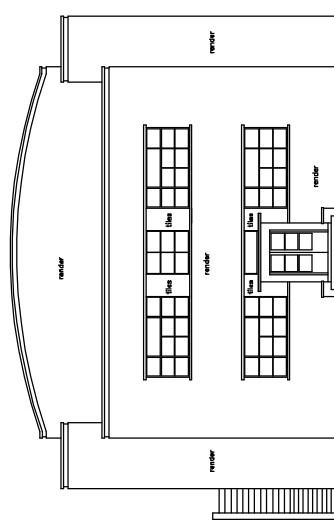
Plot 1500, Comet Way
Hatfield, Herts.
HN624

Canteen Block: Elevations
(Courtesy Midland Survey Ltd)



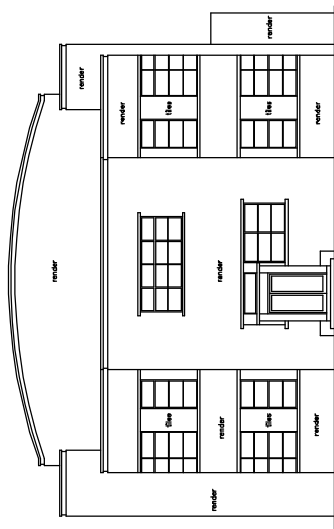
Eastern Elevation

Scale: 1:200



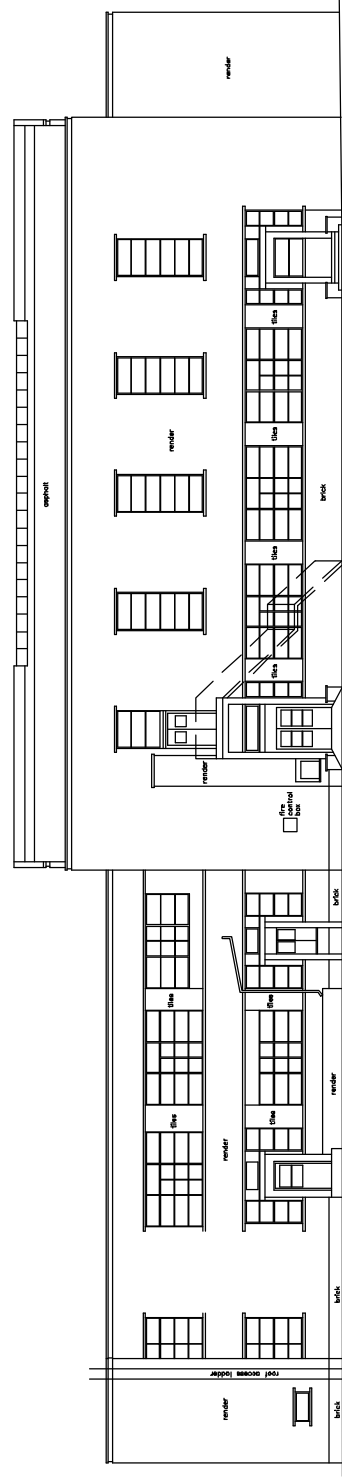
Southern Elevation

Scale: 1:200



Northern Elevation

Scale: 1:200



Western Elevation

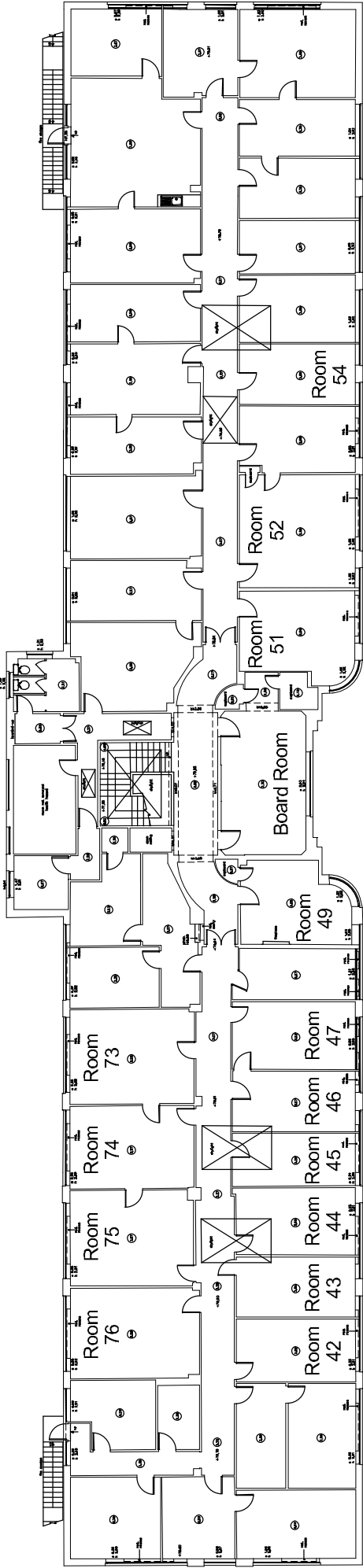
Scale: 1:200



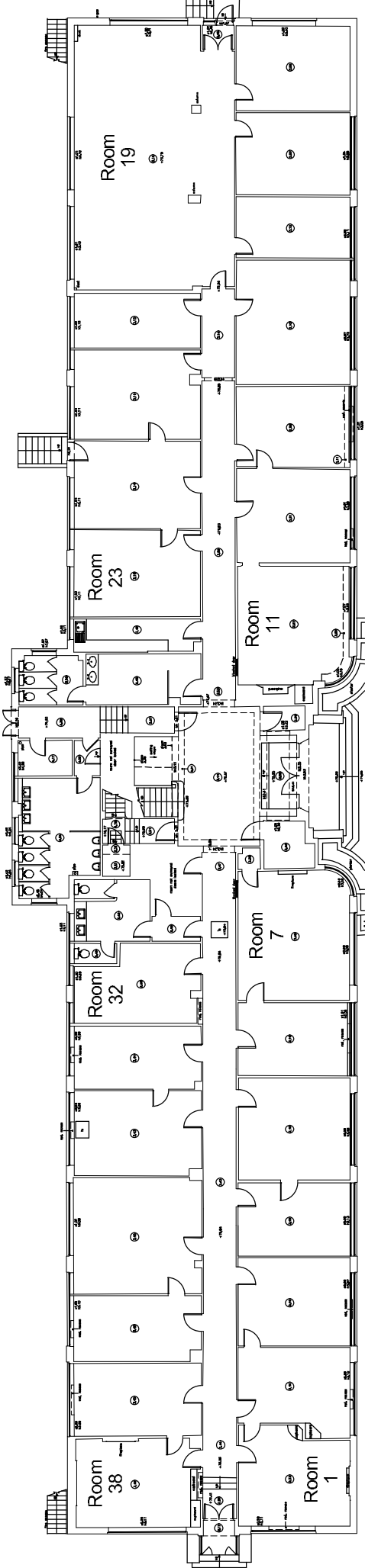
Scale 1:200

Figure 8

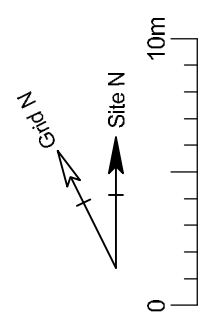
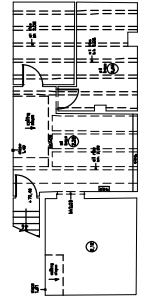
First Floor



Ground Floor



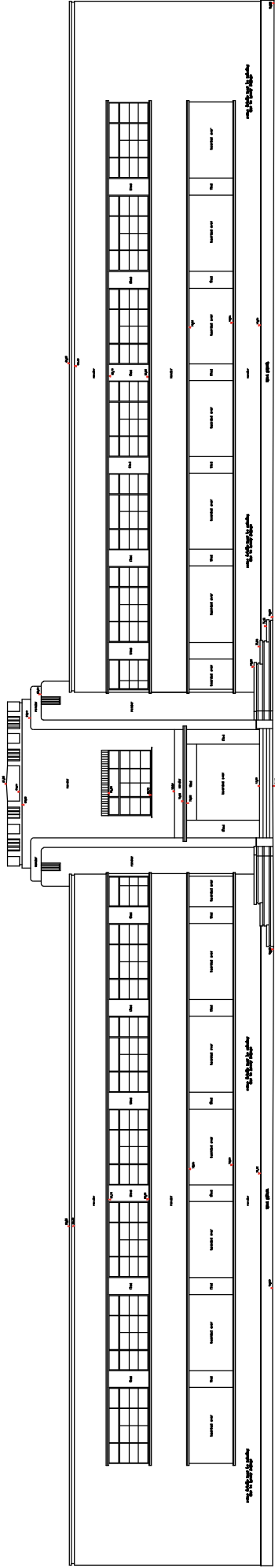
Cellar



Plot 1500, Comet Way, Hatfield

HN624 Scale 1:200 Figure 9

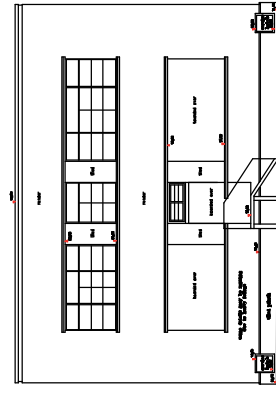
Admin Block: Plans
(Courtesy Mike Worby Survey Consultancy)



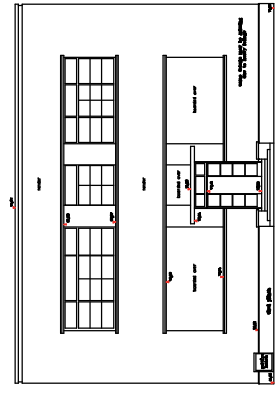
Eastern Elevation



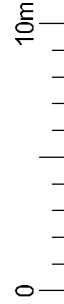
Western Elevation



Northern Elevation



Southern Elevation



Plot 1500, Comet Way, Hatfield

HN624 Scale 1:200 Figure 10

Admin Block: Elevations
(Courtesy Mike Worby Survey Consultancy)



Plate 1: Ornamental pond and fountain opposite main entrance to Administration Block



Plate 2: Canteen block, southern and eastern elevations



Plate 3: Canteen Block, northern and western elevations



Plate 4: Canteen block, southern staircase



Plate 5: Canteen block, ground floor canteen, looking N



Plate 6: Canteen block, ground floor canteen, looking S



Plate 7: Canteen block, kitchen, looking NW



Plate 8: Canteen block, first floor hall, looking N



Plate 9: Canteen Block, first floor hall, looking S



Plate 10: Canteen block, first floor hall, decorative corbel and boxed joist



Plate 11: Canteen block, first floor hall, emergency exit and dumb waiter



Plate 12: Canteen block, northern (managers') staircase

THE HERITAGE NETWORK LTD

Plot 1500, Comet Way, Hatfield

HN624



Plate 13a: Western elevation of Administration Block shortly after completion (Photo Sydney Newberry from BAE SYSTEMS archives)

Plate 13b: Composite photograph of western elevation of Administration Block as at 22 November 2006

THE HERITAGE NETWORK LTD

Plot 1500, Comet Way, Hatfield

HN624

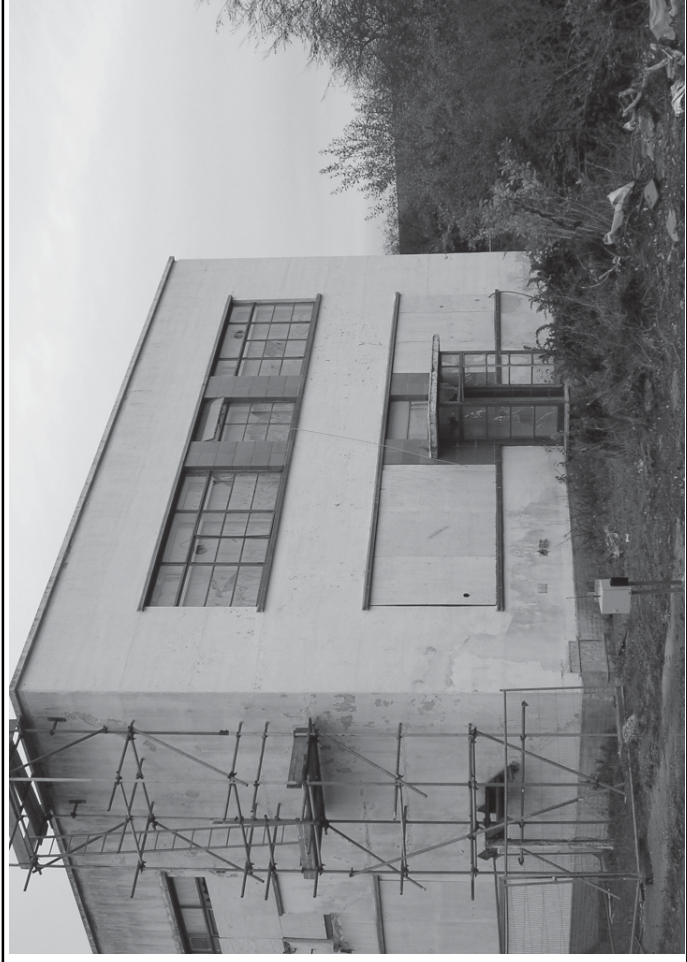
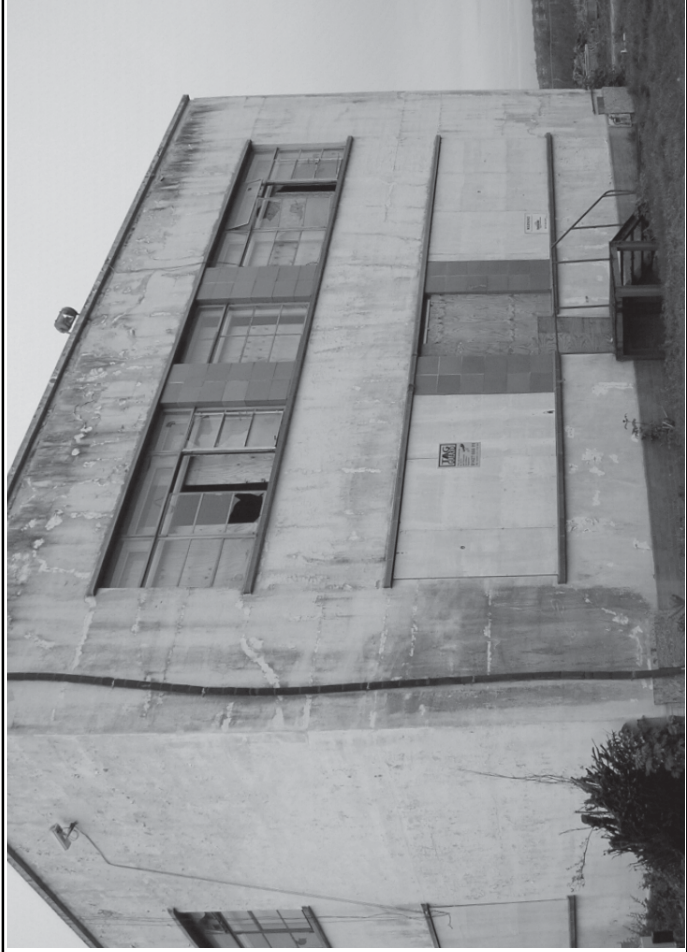


Plate 14 (top): Composite photograph of eastern elevation of Administration Block
Plate 14 (bottom left): Northern elevation of Administration Block
Plate 14 (bottom right): Southern elevation of Administration Block