



Plate 15: Administration block, lobby and lodges, looking E



Plate 16: Administration block, entrance hall and principle staircase, looking W



Plate 17: Administration block, typical office arrangement, southern corridor, western side



Plate 18: Administration block, Room 7, N elevation



Plate 19: Administration block, Room 38, E elevation



Plate 20a & b: Administration block, ground floor, ladies' lavatories, details

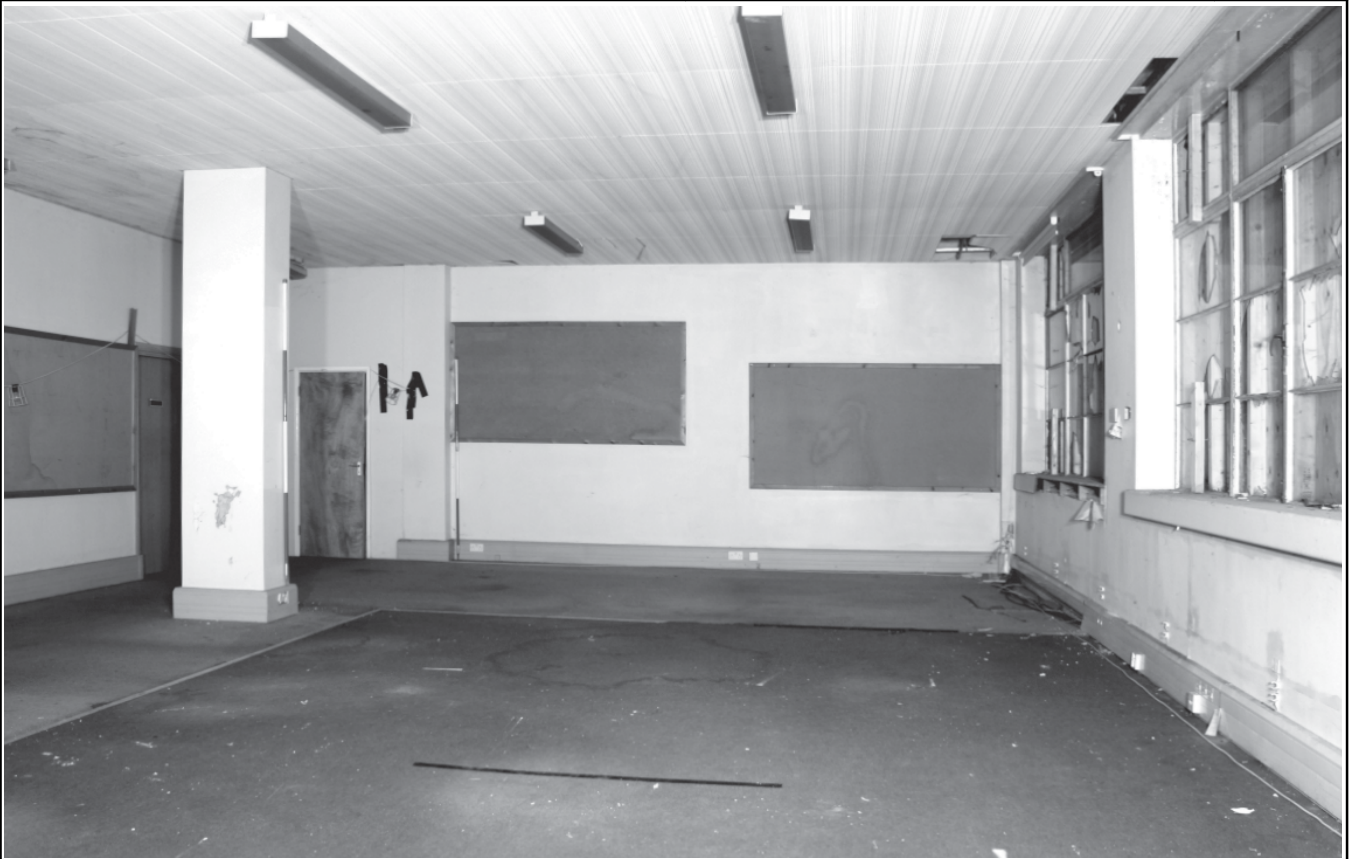


Plate 21: Administration block, Room 19, S elevation



Plate 22: Administration block, cellar, coffered ceiling

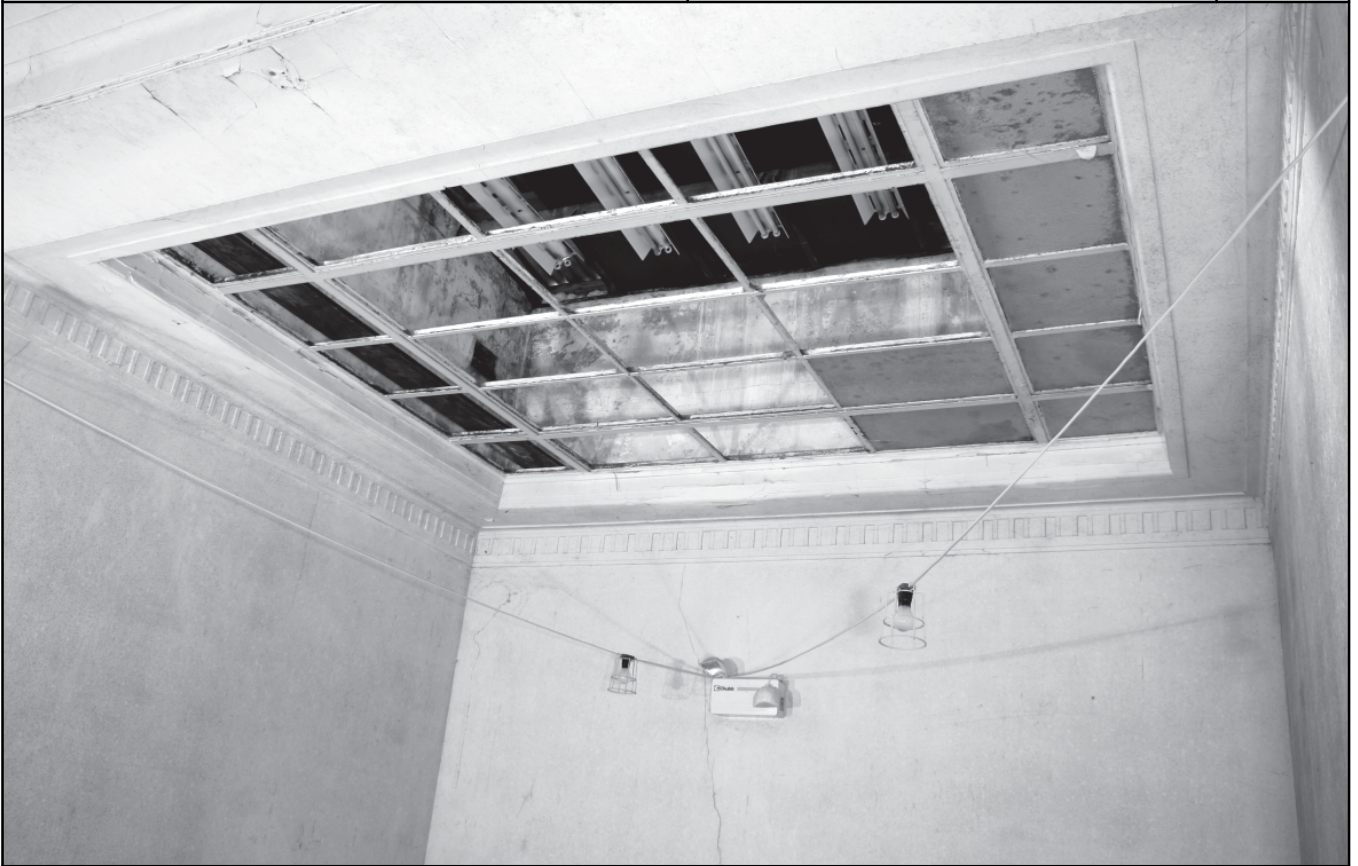


Plate 23: Administration block, skylight above stairwell

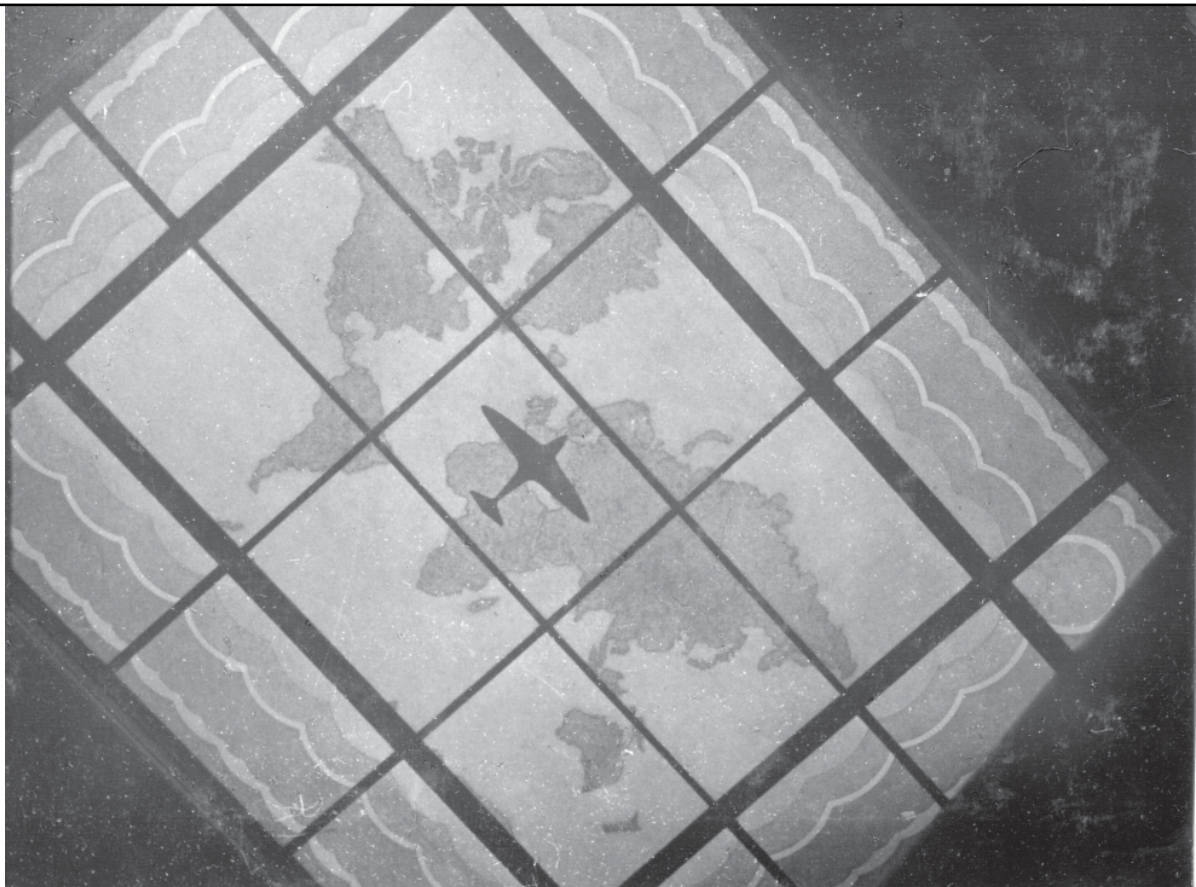


Plate 24: Administration block, skylight above staircase with original etched glazing (Hoppe 21119-60 from BAE SYSTEMS archives)



Plate 25: Administration block, boardroom, looking S



Plate 26: Administration block, boardroom in the 1930s (Fox 29938 from BAE SYSTEMS archives)



Plate 27: Administration block, Room 49, E elevation



Plate 28: Administration block, Room 49 in the 1930s (Fox 29951 from the BAE SYSTEMS archives)

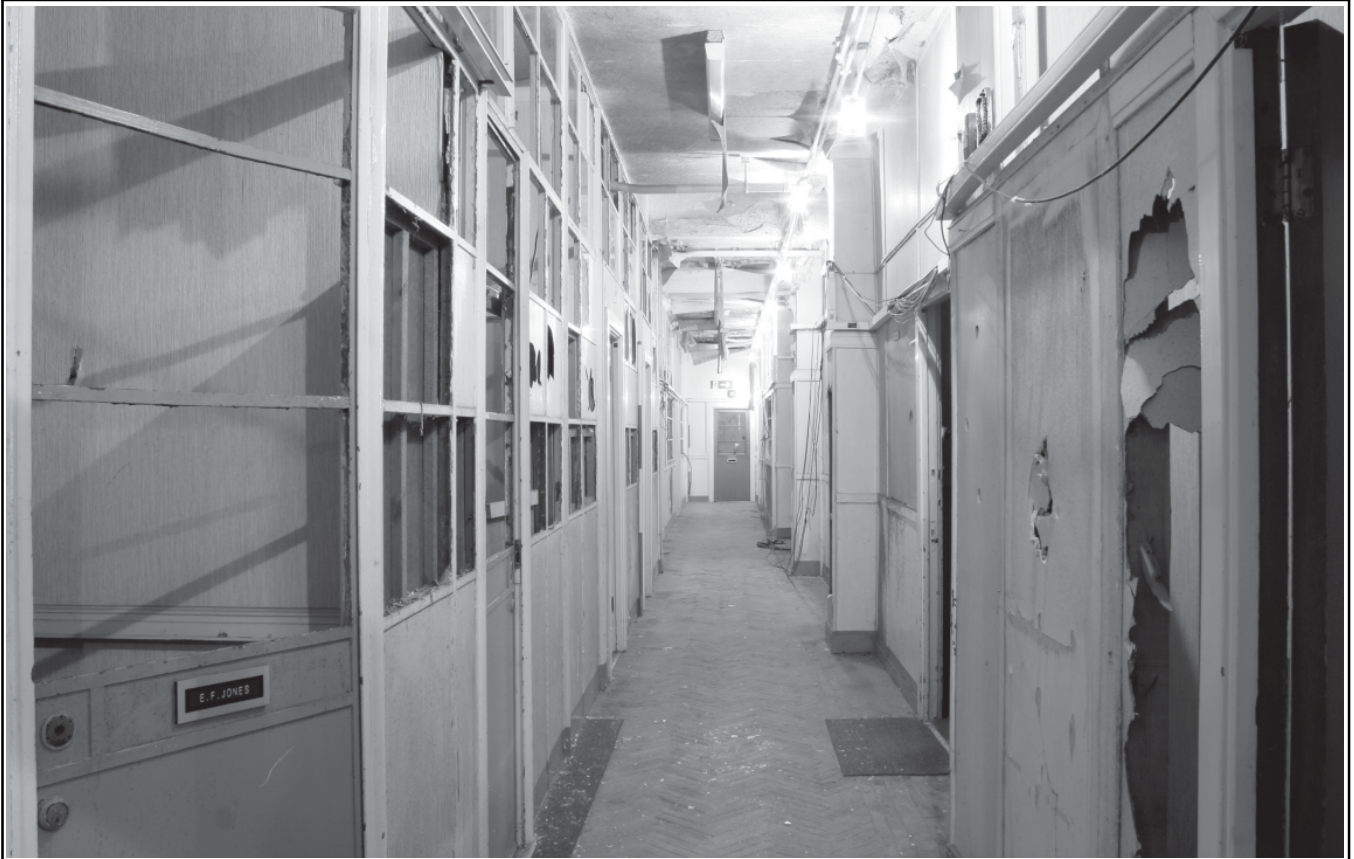


Plate 29: Administration block, upper floor, S corridor, looking S



Plate 30: Sheet Metal design office (London & Provincial 13 from the BAE SYSTEMS archives)



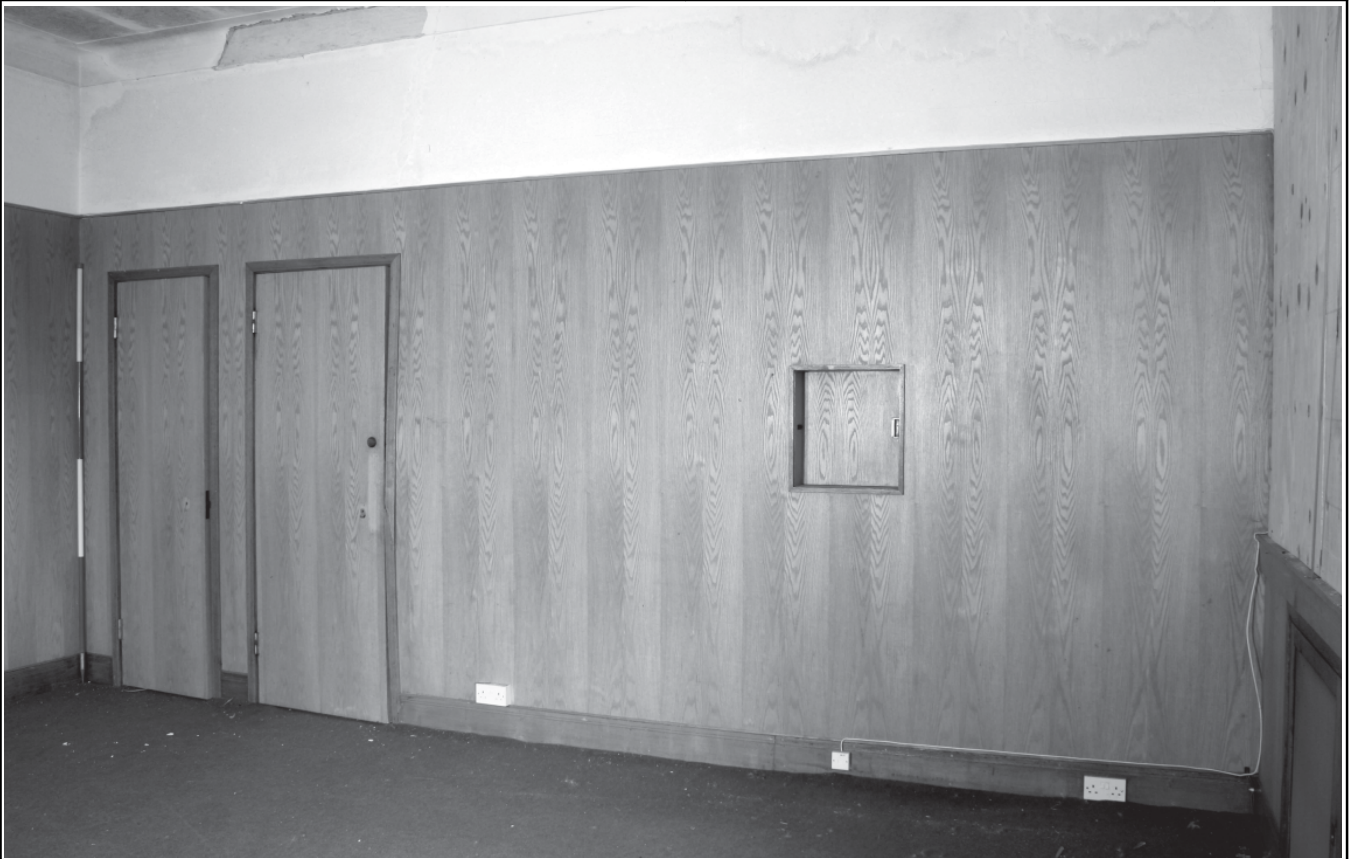


Plate 31: Administration block, Room 52, N elevation



Plate 32: Administration block, Room 51, E elevation



Plate 33: Administration block, original entrance doors, 1930s  
(Fox26877 from BAE SYSTEMS archives)



Plate 34: Administration block, entrance hall with original terrazzo floor, 1930s  
(dh2208b © BAE SYSTEMS)



Plate 35: Administration block, admin office, 1930s  
(London & Provincial 2 from the BAE SYSTEMS archive)



Plate 36: Administration block, engineering office, 1930s  
(London & Provincial 7 from BAE SYSTEMS archive)