



Frame 1: Canteen, S exterior elevation



Frame 2: Canteen, S exterior elevation



Frame 3: Canteen, S & E ext. elevations



Frame 4: Canteen, E ext. elev., S end



Frame 5: Canteen, E ext. elev., S end



Frame 6: Canteen, E ext. elev., N end



Frame 7: Canteen, N & E ext. elevations



Frame 8: Admin, S & E ext. elevations



Frame 9: Admin, E ext. elev., S end



Frame 10: Admin, E ext. elev., S middle



Frame 11: Admin, E ext. elev., middle



Frame 12: Admin, E ext. elev., N middle



Frame 13: Admin, E ext. elev., N middle



Frame 11: Admin, E ext. elev., N middle



Frame 15: Admin, E ext. elev., N end



Frame 1: Admin, E exterior elevation



Frame 2: Admin, E exterior elevation



Frame 3: Eastern elevations, looking S



Frame 4: E elevations & apron, looking S



Frame 5: Admin, N exterior elevation



Frame 6: Admin, W ext. elev., N end



Frame 7: Admin, W ext. elev., N end



Frame 8: Admin, W ext. elev., middle



Frame 9: Admin, W ext. elev., middle



Frame 10: Admin, W ext. elev., S end



Frame 11: Admin, W exterior elevation



Frame 12: Admin, W exterior elevation



Frame 13: Canteen, W & N ext. elevs.



Frame 14: Canteen, W ext. elev.



Frame 15: Western elevations, S end



Frame 1: W exterior elevations, S end



Frame 2: W exterior elevations, N end



Frame 3: Admin, W & S ext. elevs.



Frame 4: Admin, W & S ext. elevs.



Frame 5: Canteen, W & N ext. elevs.



Frame 6: Admin, S exterior elevation



Frame 7: Canteen, N & E ext. elevs.



Frame 8: Admin, E & S ext. elevs.



Frame 9: Canteen, N & E ext. elevs.



Frame 10: Admin, main entrance



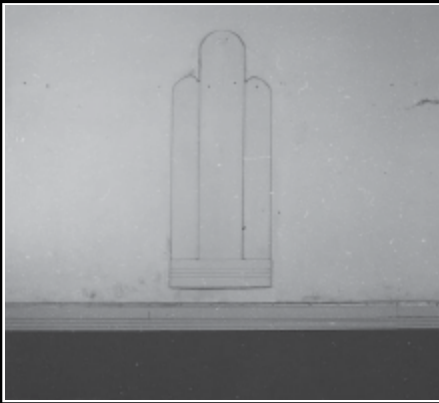
Frame 11: Admin, central block



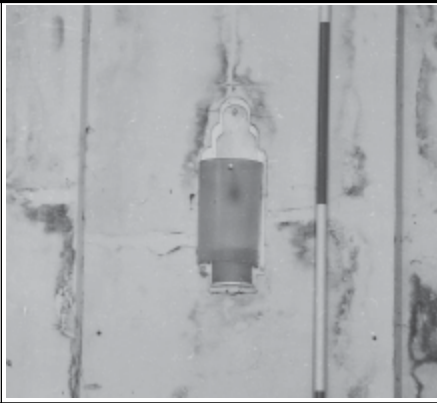
Frame 12: Admin, central block, base



Frame 13: Admin, central block, upper



Frame 1: Canteen Ballroom, decorative plaque



Frame 2: Canteen Ballroom, wall light



Frame 3: Canteen Ballroom, reeded corbel



Frame 4: Canteen Ballroom, boxed roof truss



Frame 5: Canteen Ballroom, fire door & dumb waiter



Frame 6: Canteen Reeded radiator enclosure flap



Frame 7: Canteen Managers' dining room, doorway



Frame 8: Canteen Doorway off N corridor



Frame 9: Canteen Managers' dining room, rad. enclosure



Frame 10: Admin, S upper corridor Concrete stanchion opp. Room 46



Frame 11: Admin, S upper corridor Moulded ceramic window sill, detail



Frame 12: Ornamental pond opposite Admin Block entrance



Frame 1: Canteen, G Floor
Kitchen, W half, facing NW



Frame 2: Canteen, G floor
Kitchen, E half, facing NE



Frame 3: Canteen, G floor
Kitchen, S end, facing SE



Frame 4: Canteen, G floor
Kitchen, S end, facing SE



Frame 5: Canteen, G floor
Dining room, facing SW



Frame 6: Canteen, G floor
Dining room, facing SW



Frame 7: Canteen, G floor
Dining room, facing S



Frame 8: Canteen, G floor
Dining room, facing S



Frame 9: Canteen, G floor
Dining room, facing SE



Frame 10: Canteen, G floor
Dining room, facing SE



Frame 11: Canteen, G floor
Window detail, facing W



Frame 12: Canteen, G floor
Dining room, facing N

Wide-Angle: Roll 1



Frame 1: Canteen, G floor
S staircase, facing W



Frame 2: Canteen, G floor
S staircase, facing W



Frame 3: Canteen
S staircase, upper level, facing E



Frame 4: Canteen, 1st floor
Ballroom, facing N



Frame 5: Canteen, 1st floor
Ballroom, facing S



Frame 6: Canteen, 1st floor
NW managers' dining room, facing NW



Frame 7: Canteen, 1st floor
NW managers' dining room, facing NE



Frame 8: Canteen, G floor
N entrance, facing NE



Frame 9: Canteen, G floor
Gents' lavatory adj. N entrance, facing N



Frame 10: Canteen, G floor
N staircase, facing W



Frame 11: Canteen, G floor
N staircase, facing W



Frame 12: Canteen
N staircase, upper level



Frame 1: Canteen, 1st floor
Managers' Common Room, facing NW



Frame 2: Canteen, 1st floor
Managers' Common Room, facing NW



Frame 3: Canteen, 1st floor
Ladies' lavatories



Frame 4: Admin Block, 1st floor
S corridor, facing N



Frame 5: Admin Block, 1st floor
S corridor, facing N



Frame 6: Admin Block, 1st floor
Room 46, facing E



Frame 7: Admin Block, 1st floor
Room 47, facing E



Frame 8: Admin Block, 1st floor
Room 47, facing W



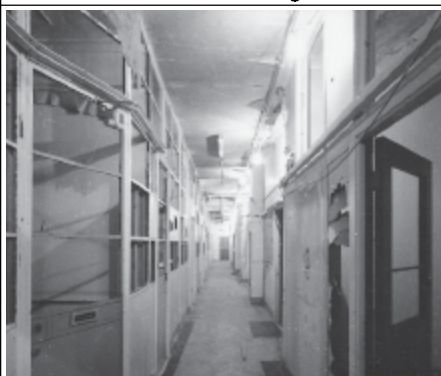
Frame 9: Admin Block, 1st floor
Room 75, facing NW



Frame 10: Admin Block, 1st floor
Room 75, facing NE



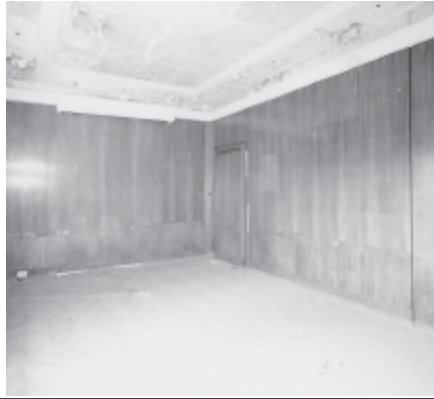
Frame 11: Admin Block, 1st floor
Room 75, facing NE



Frame 12: Admin Block, 1st floor
S corridor, facing S



Frame 1: Admin Block, 1st floor
S corridor, facing S



Frame 2: Admin Block, 1st floor
Board Room, facing SW



Frame 3: Admin Block, 1st floor
Board Room, facing NW



Frame 4: Admin Block, 1st floor
Board Room, facing E



Frame 5: Ornamental Pond
opp. main entrance to Admin Block



Frame 6: Admin Block, 1st floor
Room 49, facing SE



Frame 7: Admin Block, 1st floor
Room 49, facing NE



Frame 8: Admin Block, 1st floor
Room 49, facing W



Frame 9: Admin Block, 1st floor
Room 51, facing SE



Frame 10: Admin Block, 1st floor
Room 51, facing SW



Frame 11: Admin Block, 1st floor
Room 52, facing NW



Frame 12: Admin Block, 1st floor
Room 52, facing NE

Wide-Angle: Roll 4



Frame 1: Admin Block, 1st floor Room 52, radiator grill, facing E



Frame 2: Admin Block, 1st floor N corridor, facing N



Frame 3: Admin Block, 1st floor N corridor, facing S



Frame 4: Admin Block, 1st floor Passage and landing, facing S



Frame 5: Admin Block, 1st floor Landing, facing S



Frame 6: Admin Block, 1st floor Landing, facing S



Frame 7: Admin Block, 1st floor N door to board room, facing NE



Frame 8: Admin Block, 1st floor Skylight above stairwell, facing SW



Frame 9: Admin Block, 1st floor Skylight above stairwell, facing W



Frame 10: Admin Block, 1st floor Head of main staircase



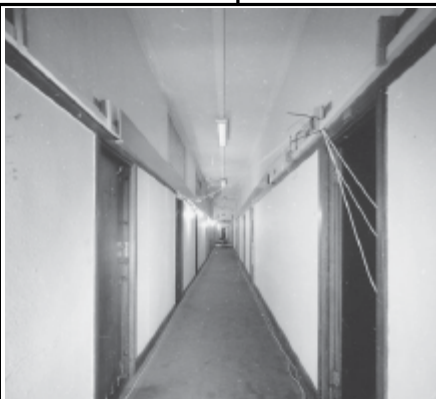
Frame 11: Admin Block Main staircase from 1st half-landing



Frame 12: Admin Block Main staircase from 1st half-landing



Frame 1: Admin Block, G floor
S corridor, facing S



Frame 2: Admin Block, G floor
S corridor, facing N



Frame 3: Admin Block, G floor
Room 38, facing S



Frame 4: Admin Block, G floor
Room 38, facing W



Frame 5: Admin Block, G floor
Room 38, facing W



Frame 6: Admin Block, G floor
Room 38, facing N



Frame 7: Admin Block, G floor
Room 38, facing E



Frame 8: Admin Block, G floor
Room 1, facing N



Frame 9: Admin Block, G floor
Room 1, facing N



Frame 1: Admin Block, G floor Room 1, facing NE



Frame 2: Admin Block, G floor Room 1, facing S



Frame 3: Admin Block, G floor Room 37, facing W



Frame 4: Admin Block, G floor Room 35, facing W



Frame 5: Admin Block, G floor Room 35, facing E



Frame 6: Admin Block, G floor Room 5, facing E



Frame 7: Admin Block, G floor Room 5, facing SE



Frame 8: Blank



Frame 9: Admin Block, G floor Room 5, facing W



Frame 10: Admin Block, G floor Room 5, facing N



Frame 11: Admin Block, G floor Room 5, facing SE



Frame 12: Admin Block, G floor Room 7, facing N

Wide-Angle: Roll 7



Frame 1: Admin Block, G floor Room 7, facing SE



Frame 2: Admin Block, G floor Room 7, facing S



Frame 3: Admin Block, G floor Room 7, facing W



Frame 4: Admin Block, G floor WC adj. Room 32, facing W



Frame 5: Admin Block, G floor WC adj. Room 32, facing NW



Frame 6: Admin Block, G floor WC adj. Room 32, facing SW



Frame 7: Admin Block, G floor WC adj. Room 32, N cubicle, facing W



Frame 8: Admin Block, G floor WC adj. Room 32, S cubicle, facing S



Frame 9: Admin Block, G floor N corridor, facing N



Frame 10: Admin Block, G floor Room 19, facing N



Frame 11: Admin Block, G floor Room 19, facing E



Frame 12: Admin Block, G floor Room 19, facing SE

Wide-Angle: Roll 8



Frame 1: Admin Block, G floor Room 19, facing S



Frame 2: Admin Block, G floor Room 19, facing N



Frame 3: Admin Block, G floor N corridor, facing S



Frame 4: Admin Block, G floor Room 11, facing S



Frame 5: Admin Block, G floor Room 11, facing E



Frame 6: Admin Block, G floor Room 11, facing SE



Frame 7: Admin Block, G floor Entrance Hall, facing N



Frame 8: Admin Block, G floor Entrance Hall, facing S



Frame 9: Admin Block, G floor Entrance Hall, facing E



Frame 10: Admin Block, G floor Entrance Hall, facing E



Frame 11: Admin Block, G floor Entrance Hall, facing W



Frame 12: Admin Block, G floor Entrance Hall, facing W

Wide-Angle: Roll 9



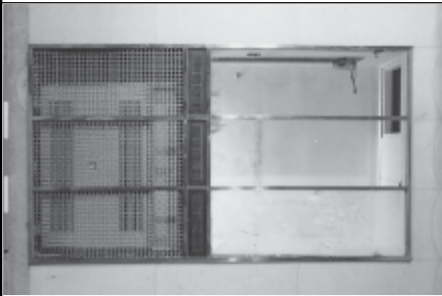
Frame 1: Admin Block, Cellar
Coffered ceiling, detail, facing NE



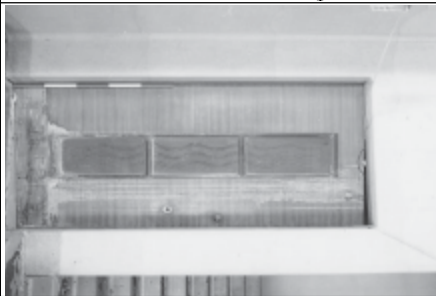
Frame 2: Admin Block, Cellar
Interior of vault, facing SE



Frame 3: Admin Block, G floor
Entrance Hall, chromed front to N lodge



Frame 4: Admin Block, G floor
Entrance Hall, chromed front to N lodge



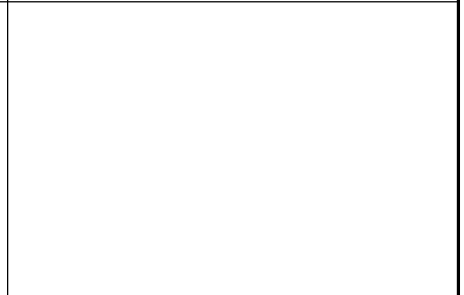
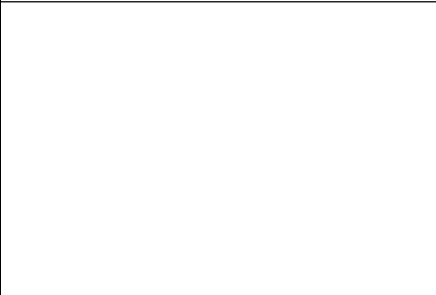
Frame 4: Admin Block, G floor
Entrance Hall, door to S of staircase



Frame 5: Admin Block, G floor
Corridor to exit, N of staircase



Frame 6: Admin Block, G floor
Utility room adj, W exit





IMG_6119.jpg



IMG_6120.jpg



IMG_6123.jpg



IMG_6126.jpg



IMG_6129.jpg



IMG_6134.jpg



IMG_6137.jpg



IMG_6138.jpg



IMG_6141.jpg



IMG_6146.jpg



IMG_6149.jpg



IMG_6152.jpg



IMG_6155.jpg



IMG_6159.jpg



IMG_6167.jpg



IMG_6170.jpg



IMG_6171.jpg



IMG_6174.jpg



IMG_6177.jpg



IMG_6182.jpg



IMG_6186.jpg



IMG_6189.jpg



IMG_6192.jpg



IMG_6195.jpg



IMG_6198.jpg



IMG_6199.jpg



IMG_6202.jpg



IMG_6205.jpg



IMG_6210.jpg



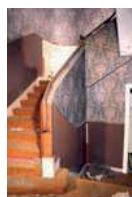
IMG_6213.jpg



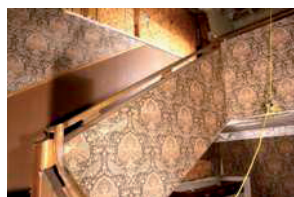
IMG_6216.jpg



IMG_6217.jpg



IMG_6220.jpg



IMG_6223.jpg



IMG_6226.jpg



IMG_6229.jpg



IMG_6234.jpg



IMG_6237.jpg



IMG_6240.jpg



IMG_6243.jpg



IMG_6246.jpg



IMG_6249.jpg



IMG_6250.jpg



IMG_6253.jpg



IMG_6256.jpg



IMG_6259.jpg



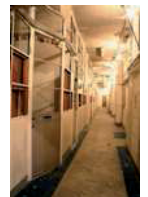
IMG_6262.jpg



IMG_6265.jpg



IMG_6268.jpg



IMG_6273.jpg



IMG_6279.jpg



IMG_6280.jpg



IMG_6283.jpg



IMG_6286.jpg



IMG_6289.jpg



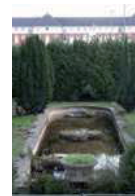
IMG_6293.jpg



IMG_6296.jpg



IMG_6298.jpg



IMG_6302.jpg



IMG_6309.jpg



IMG_6310.jpg



IMG_6313.jpg



IMG_6318.jpg



IMG_6319.jpg



IMG_6322.jpg



IMG_6325.jpg



IMG_6328.jpg



IMG_6333.jpg



IMG_6336.jpg



IMG_6339.jpg



IMG_6340.jpg



IMG_6343.jpg



IMG_6349.jpg



IMG_6352.jpg



IMG_6357.jpg



IMG_6358.jpg



IMG_6361.jpg



IMG_6364.jpg



IMG_6367.jpg



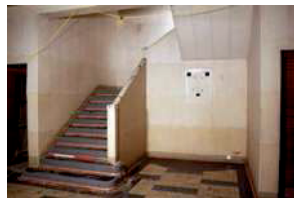
IMG_6370.jpg



IMG_6373.jpg



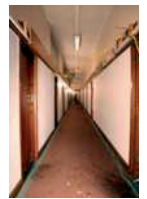
IMG_6377.jpg



IMG_6379.jpg



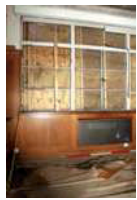
IMG_6634.jpg



IMG_6637.jpg



IMG_6640.jpg



IMG_6641.jpg



IMG_6644.jpg



IMG_6647.jpg



IMG_6650.jpg



IMG_6653.jpg



IMG_6656.jpg



IMG_6659.jpg



IMG_6662.jpg



IMG_6665.jpg



IMG_6668.jpg



IMG_6671.jpg



IMG_6674.jpg



IMG_6677.jpg



IMG_6680.jpg



IMG_6683.jpg



IMG_6688.jpg



IMG_6689.jpg



IMG_6694.jpg



IMG_6697.jpg



IMG_6700.jpg



IMG_6701.jpg



IMG_6704.jpg



IMG_6707.jpg



IMG_6710.jpg



IMG_6713.jpg



IMG_6716.jpg



IMG_6719.jpg



IMG_6724.jpg



IMG_6725.jpg



IMG_6728.jpg



IMG_6734.jpg



IMG_6737.jpg



IMG_6742.jpg



IMG_6743.jpg



IMG_6752.jpg



IMG_6755.jpg



IMG_6758.jpg



IMG_6761.jpg



IMG_6766.jpg



IMG_6769.jpg



IMG_6770.jpg



IMG_6773.jpg



IMG_6776.jpg



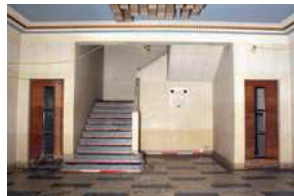
IMG_6779.jpg



IMG_6782.jpg



IMG_6788.jpg



IMG_6791.jpg



AdminBlock_Efront.jpg



AdminBlock_Wfront.jpg



PB220001.JPG



PB220002.JPG



PB220003.JPG



PB220004.JPG



PB220005.JPG



PB220006.JPG



PB220007.JPG



PB220008.JPG



PB220009.JPG



PB220010.JPG



PB220011.JPG



PB220012.JPG



PB220013.JPG



PB220014.JPG



PB220015.JPG



PB220016.JPG



PB220017.JPG



PB220018.JPG



PB220019.JPG



PB220020.JPG



PB220021.JPG



PB220022.JPG



PB220023.JPG



PB220024.JPG



PB220025.JPG



PB220026.JPG



PB220027.JPG



PB220028.JPG



PB220029.JPG



PB220030.JPG



PB220031.JPG



PB220032.JPG



PB220033.JPG



PB220034.JPG



PB220035.JPG



PB220036.JPG



PB220037.JPG



PB220038.JPG



PB220039.JPG



PB220040.JPG



PB220041.JPG



PB220042.JPG



PB220043.JPG



PB220044.JPG



PB220045.JPG



PB220046.JPG



PB220047.JPG



PB220048.JPG



PB220049.JPG



PB220050.JPG



PB220051.JPG



PB220052.JPG



PB220053.JPG



PB220054.JPG



PB220055.JPG



PB220056.JPG



PB220057.JPG



PB220058.JPG



PB220059.JPG



PB220060.JPG



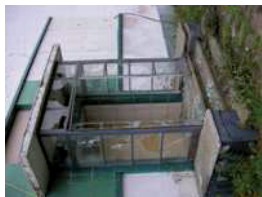
PB220061.JPG



PB220062.JPG



PB220063.JPG



PB220064.JPG



PB220065.JPG



PB220066.JPG



PB220067.JPG



PB220068.JPG



PB220069.JPG



PB220070.JPG



PB220071.JPG



PB220072.JPG



PB220073.JPG



PB220074.JPG



PB220075.JPG



PB220076.JPG



PB220077.JPG



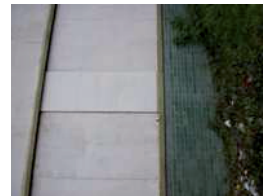
PB220078.JPG



PB220079.JPG



PB220080.jpg



PB220081.jpg



PB220082.jpg



PB220083.JPG



PB220084.JPG



PB220085.JPG



PA260061.JPG



PA260062.JPG



PA260063.JPG



PA260064.JPG



PA260065.JPG



PA260068.JPG



PA260069.JPG



PA260070.JPG



PA260071.JPG



PA260072.JPG



PA260074.JPG



PA260075.JPG



PA260076.JPG



PA260077.JPG



PA260078.JPG



PA260079.JPG



PA260080.JPG



PA260081.JPG



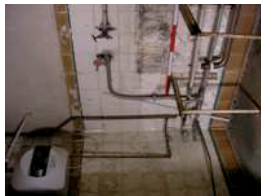
PA260082.jpg



PA260083.jpg



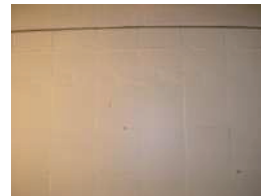
PA260084.jpg



PA260085.JPG



PA260086.JPG



PA260087.JPG



PA260088.JPG



PA260089.JPG



PA260090.JPG



PA260091.JPG



PA260092.JPG



PA260093.JPG



DH Directors-Flight15059s.jpg



Hatfield-Admin-camo-dh1104a.jpg



Hatfield-Admin-camo-dh1152.jpg



Hatfield-Admin-L&P2.jpg



Hatfield-Admin-NewberyT69381.jpg



Hatfield-Board Rm-Fox29938.jpg



Hatfield-Canteen-camo-dh1104b.jpg



Hatfield-Canteen-dh1126a.jpg



Hatfield-Canteen-dh1126b.jpg



Hatfield-Canteen-dh1126c.jpg



Hatfield-children party-dh4539a.jpg



Hatfield-children party-dh4539c.jpg



Hatfield-Common Rm-Fox29933.jpg



Hatfield-Common Rm-Fox29970.jpg



Hatfield-dh4107.jpg



Hatfield-Directors Office-L&P10.jpg



Hatfield-Engineering-L&P7.jpg



Hatfield-GdH Jnr plaque-dh3562b.jpg



Hatfield-GdH Jnr plaque-dh3635a.jpg



Hatfield-Office-Fox29934.jpg



Hatfield-Office-Fox29939.jpg



Hatfield-Office-Fox29951.jpg



Hatfield-Office-Fox29977.jpg



Hatfield-Secys Office-Fox29936.jpg



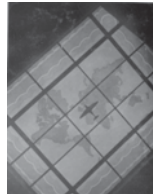
Hatfield-Sheet metal-L&P13.jpg



Hatfield-upper canteen-dh4174b.jpg



Hatfield-upper canteen-dh4174c.jpg



Hatfield-window-Hoppe21119-60.jpg



Hat-Admin entry-dh7274i.jpg



Hat-Admin entry-Fox26877.jpg



Hat-Admin entry-Fox29332.jpg



Hat-Admin night-dh7057g.jpg



Hat-Admin-CN3215n.jpg



Hat-Admin-CN4081-11.jpg



Hat-Admin-dh7099l.jpg



Hat-Admin-Fox26876.jpg



Hat-Admin-Greville11511.jpg



Hat-Admin-Newberry70025.jpg



Hat-Admin-sc9040.jpg



Hat-Air-Aerof47563.jpg



Hat-Air-CN3226d.jpg



Hat-Air-CN3576g.jpg



Hat-Air-CN3576r.jpg



Hat-Air-CN3580n.jpg



Hat-Air-CN4002w.jpg



Hat-Air-CN4058a.jpg



Hat-Air-CN6019a.jpg



Hat-Air-CN6902a.jpg



Hat-Air-dh18156c.jpg



Hat-Air-dh21686-20a.jpg



Hat-Air-F00318-15.jpg



Hat-Air-S&G485085.jpg



Hat-Int dining-NewberryT69382.jpg



Hat-Int office-Fox29929.jpg



Hat-Int stairs-dh2208b.jpg

Addendum

Introduction

1.1 This addendum has been prepared to address a number of points raised by the *Hertfordshire Historic Environment Unit* following their consideration of the *Historic Buildings Record* for Plot 1500, Comet Way, Hatfield, prepared by the Heritage Network and dated January 2007 (HN Report no.387). The record was undertaken in response to conditions attached to planning consent for the conversion of the buildings (refs. S6/2006/442/FP & S6/2006/571/LB), granted by the Welwyn Hatfield District Council (WHDC)

1.2 In a letter dated 16 April 2007 (see Annex 1), additional information was sought regarding:

- the architectural background to the design of the buildings and why this style was considered suitable
- the context of the buildings, including their relationship to the factory immediately behind, and the reason for the more imposing eastern (front) elevations and ornamental pool fronting the road

1.3 Additional illustrative material was requested including:

- a phase plan of the buildings
- photographs of surviving original fixtures and fittings
- annotations to the plan view of the Canteen Block

Architectural Background and Context of the Buildings

1.4 The Canteen and Administration Blocks at Hatfield Aerodrome were built in the International Modern style, a term first coined in the USA to describe the new architectural style of the 20th century. The style is intentionally forward looking, marking a decisive break with the backward looking Neoclassical, Baroque, Gothic Revival, and Arts and Crafts styles of the 18th and 19th centuries. It is characterised by simplicity and functionality and is associated especially with the development of modern industries in the years between the First and Second World Wars. Examples of the style can be seen extensively in the design of stations on the London Underground at this time, notably on the Piccadilly Line, and in stations on the newly electrified Southern Railway.

1.5 The Hatfield buildings share a close heredity with a number of contemporary factory buildings, particularly those designed by Wallis, Gilbert & Partners and including the former Hoover and Firestone factories on the road west out of London, built in 1933 and 1928 respectively. All three share features which unite them, notably being constructed by the Trussed Concrete Steel Company using white rendered reinforced concrete, and having flat roofs, and curved corners and windows. All three had grand, centrally placed entrances reached through landscaped gardens, the Hatfield site incorporating an ornamental pond and fountain. All three were situated in prominent locations on new highways, intended to lead a growing motoring public from the capital to the countryside (the Hatfield site being on the Barnet By-pass, built in 1927 to relieve the town centres of Barnet and Hatfield of the increasing burden of northbound

traffic). These factories were designed as landmarks, reflecting the optimism of the inter-war years, and thus providing a form of physical advertising for the factory owners and their products.

1.6 Behind the imposing frontages at Hatfield, which provided the administrative and social hubs of the aerodrome, lay a typical north-light factory which could be accessed via a bridge from the first floor of the Administration Block, and a variety of ancillary buildings. These buildings can be seen on the aerial photograph printed on the cover of the full report and on Figure 4, with a key showing what functions were carried out in what locations. The development sequence of the aerodrome and the aircraft factory between 1930 and 1997 is illustrated in Figures 3 – 6 of the full report, and the archive includes a series of aerial photographs of the site obtained from the British Aerospace archives (see Appendix 3 of the full report). Unfortunately, with the exception of the gatehouse which still survives (and has been the subject of a separate recording project), none of the factory buildings were recorded before their demolition.

Phasing

1.7 The basic structure of the buildings, and many of the fixtures and decorative elements, are original and remain unchanged. The design of the buildings, with few internal structural walls, allows considerable flexibility in the use of the internal spaces, and this has readily permitted the remodelling of the Administration block, as the nature and ownership of the business changed.

1.8 A phasing of these changes in graphic form cannot easily be achieved. Nevertheless, the recording process, and a comparison with photographs taken in the 1930s and '40s allows a number of broad conclusions to be drawn.

1.9 The southern corridor on the ground floor, with easy access to the management side of the Canteen block, is always likely to have been the location of the executive offices (Plate 40). As has already been noted, the eastern offices respect the layout of the windows and the radiators and are likely to be in their original form. The partition which encloses the western offices has glazed metal-framed panels above the door line which are also likely to be original, but the internal partitioning may have been altered at a later, undefined date.

1.10 The northern corridor on the ground floor led to the administration office which is illustrated in its original form in Plate 35. This shows a largely open space at the northern end with partitioned offices to the south. These partitions do not obviously match the layout of this area as recorded in 2006 and the conclusion must be that this whole area was remodelled at a later, undefined date, and possibly on more than one occasion.

1.11 The southern corridor on the first floor appears to have formed the *Sheet Metal Office* in the 1930s, and this is illustrated in Plate 49 taken from the extreme south-west corner of the room. A comparison between this photograph and the current survey suggests that much of the original glass and metal partitioning was removed at a later date, although Rooms 45-48 were left in situ. The remaining area is likely to have been remodelled on more than one occasion.

1.12 The northern corridor on the first floor appears to have formed the *Engineering Office* in the 1930s, and this is illustrated in Plate 36 taken from the extreme north-west corner of the

room. A comparison between this photograph and the current survey suggests that this area is likely to have been remodelled on more than one occasion.

Additional Illustrations

Figure 7 (revised).....Canteen Block: Plans

Plate 37 Canteen block, first floor, common room, looking N

Plate 38Canteen block, first floor, common room in 1930s or '40s

Plate 39Canteen block, executive dining room, looking NW

Plate 40 Admin block, ground floor, southern corridor, looking N

Plate 41 Admin block, cellar, safe door, looking SE

Plate 42 Admin block, cellar, safe door, dated maker's plaque

Plate 43 Admin block, first floor landing, looking S

Plate 44 Admin block, first floor, southern corridor, Room 41 moulding detail

Plate 45 Canteen block, N entrance, terrazzo framed porch

Plate 46Canteen block, ground floor, gent's lavatory adjacent to N entrance

Plate 47 Admin block, entrance hall, N lodge

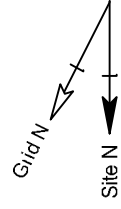
Plate 48 Admin block, entrance hall, decorative glass in doors

Plate 49 Admin block, sheet metal office, 1930s



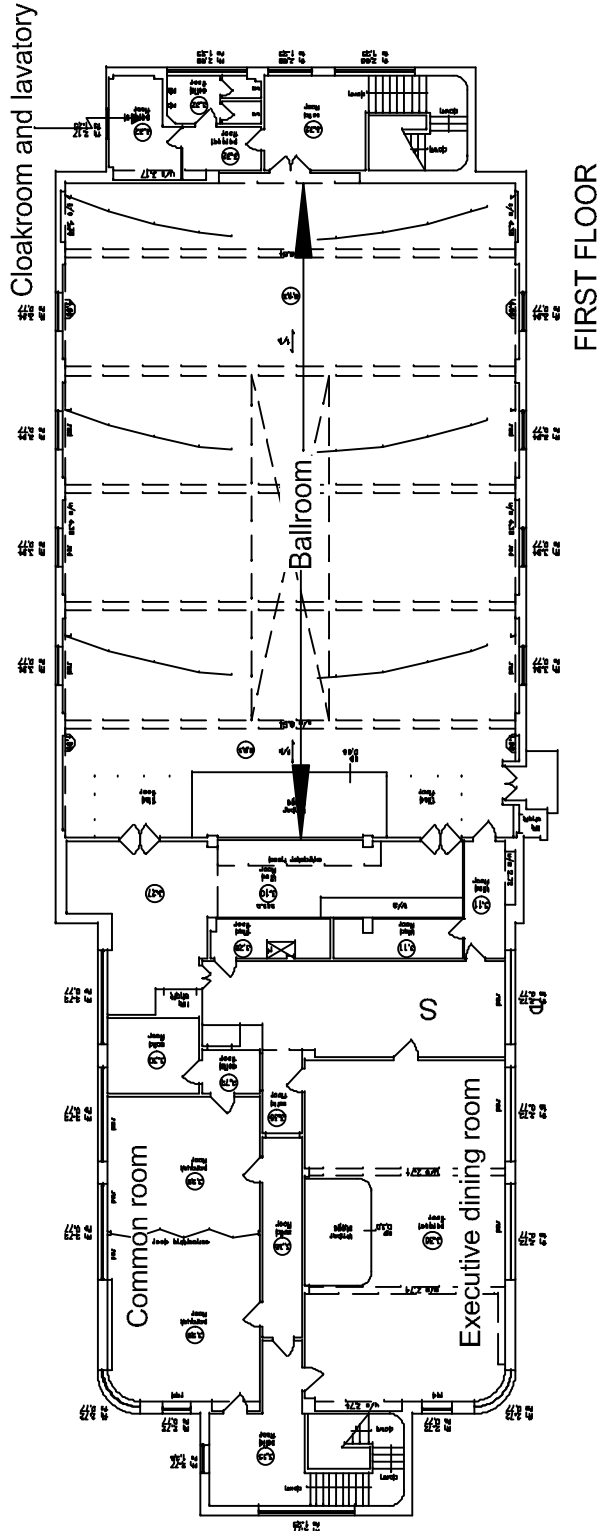
Plot 1500, Comet Way
Hatfield, Herts.
HN624

Canteen Block: Plans
(Courtesy Midland Survey Ltd)

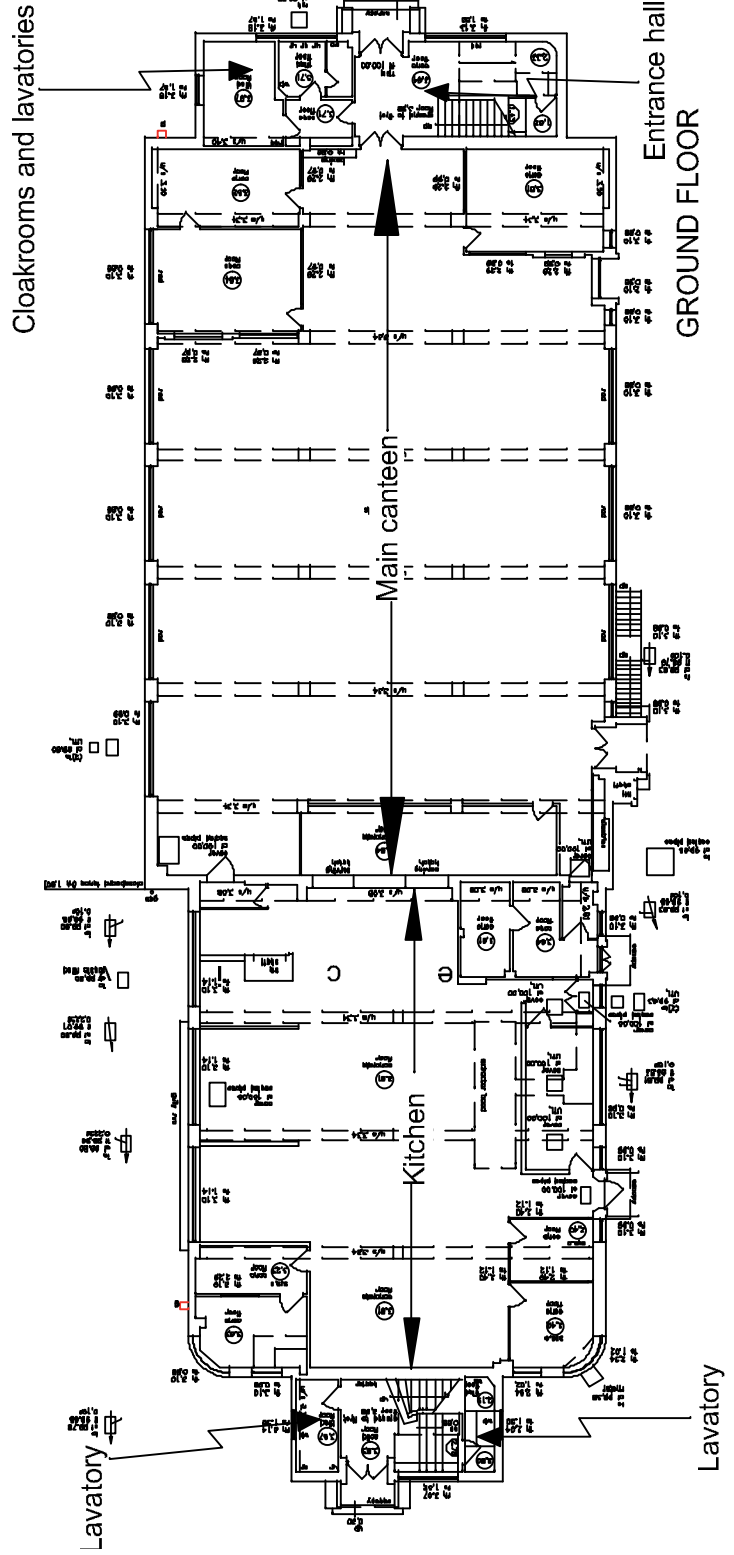


Scale 1:200

Figure 7 (Revised)



FIRST FLOOR



GROUND FLOOR



Plate 37: Canteen block, first floor, common room, looking N
(Full report, para.3.7)



Plate 38: Canteen block, first floor, common room in 1930s or '40s
(Fox 29933 from BAE SYSTEMS archive)



Plate 39: Canteen block, executive dining room, looking NW
(Full report, para.3.7)



Plate 40: Admin block, ground floor, southern corridor, looking N
(Full report, para.3.12)



Plate 41: Admin block, cellar, safe door, looking SE

(Full report, para.3.14)



Plate 42: Admin block, cellar, safe door, dated maker's plaque

(Full report, para.3.14)



Plate 43: Admin block, first floor landing, looking S
(Full report, para.3.16)



Plate 44: Admin block, first floor, southern corridor, Room 41 moulding detail
(Full report, para.3.19)



Plate 45: Canteen block, N entrance, terrazzo framed porch
(Full report, para.3.7)



Plate 46: Canteen block, ground floor, gent's lavatory adjacent to N entrance
(Full report, para.3.7)

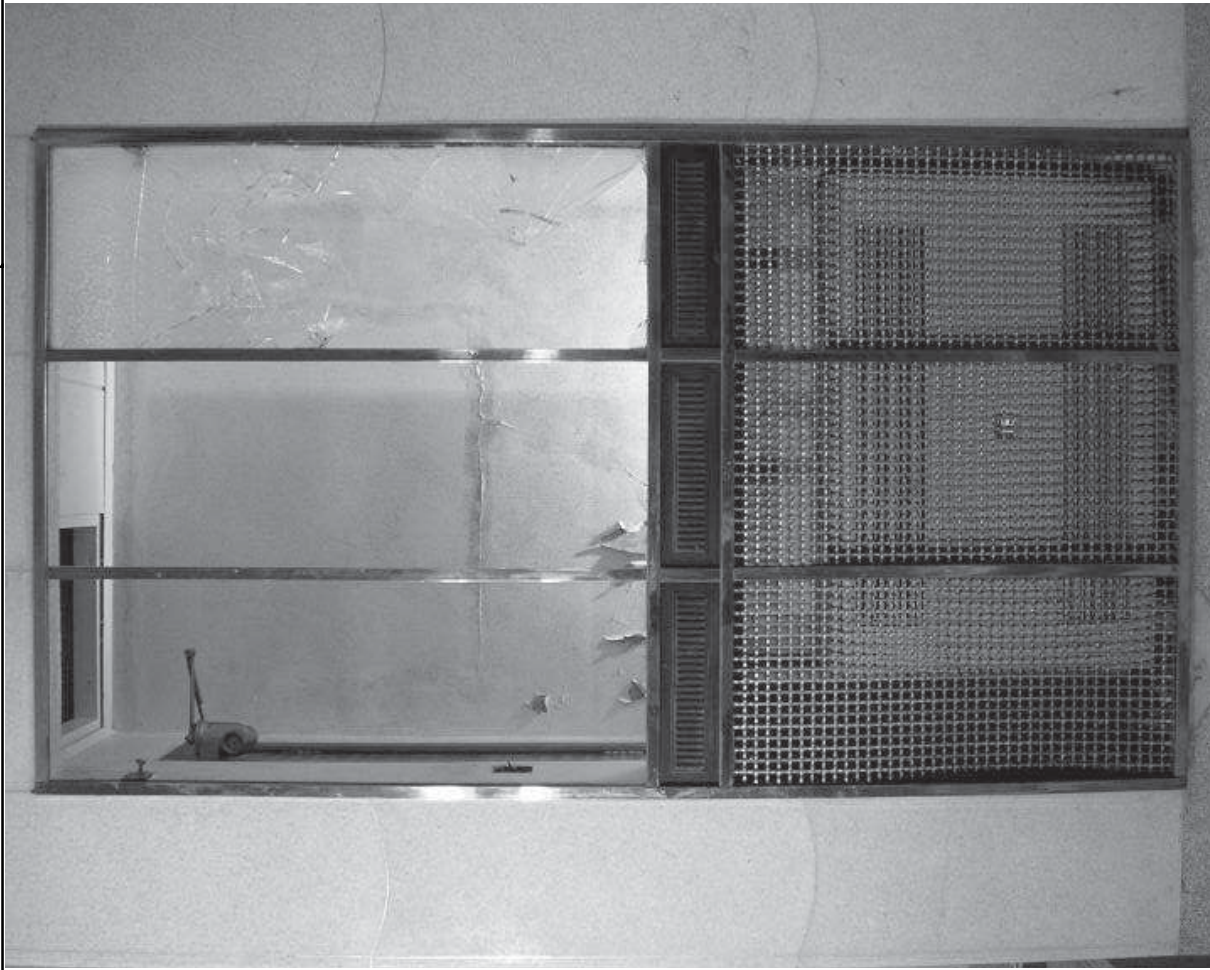


Plate 47: Admin block, entrance hall, N lodge
(Full report, para.3.11)



Plate 48: Admin block, entrance hall, decorative glass in doors
(Full report, para.3.11)



Plate 49: Admin block, sheet metal office, 1930s
(London & Provincial 13 from BAE SYSTEMS archive)

Annex 1



David Hillelson
The Heritage Network Ltd
11 Furnston Court
Letchworth
Herts SG6 1UJ

County Hall
Hertford SG13 8DN

Fax: 01992 555251
Tel: 01992 555241
Contact: Mr A Instone
My ref: AI/06/0442-5
Your ref: **6/06/0442**

16th April, 2007

RECEIVED 19 APR 2007

Dear David,

Re: REFURBISHMENT OF EXISTING LISTED BUILDINGS AND ERECTION OF EXTENSION TO CREATE NEW POLICE STATION AND CRIMINAL JUSTICE CENTRE WITH ASSOCIATED PARKING – COMET WAY, HATFIELD: ARCHAEOLOGICAL IMPLICATIONS

Thank you for sending us a copy of a Historic Buildings recording report of the above site.

The report provides much useful information, however there are a number of points which need to be addressed before we can approve it:

- There should be discussion of the architectural background to the design of the buildings and why this style was considered suitable
- The report should consider the context of the buildings, including their relationship to the factory immediately behind and the reasons for the more imposing eastern (front) elevations and ornamental pool fronting the road.
- The report should include a phase plan of the buildings. For example the text refers to some later insertions and original partitions should be identified.




- The plans should be annotated so that rooms can be easily cross referenced with the text. For example figures 5, 6 and 7 and the discussion of the canteen block.
- Additional photographs of original fixtures and fittings that survive

The applicant should also provide details regarding suitable publication of the results of the fieldwork and assurances that funding has been secured for this.

Upon receiving assurances regarding the above points by the applicant and an updated report, we will be able to recommend that the archaeological condition is discharged.

Please do not hesitate to contact me should you require any further information or clarification.

Yours sincerely,

A handwritten signature in black ink, appearing to read 'Andy Instone', with a long horizontal flourish underneath.

Andy Instone
County Planning Archaeologist

Cc: Simon Chivers, Welwyn Hatfield Council
Vincent and Gorbing Associates, agent