

## RUSH GREEN FARM, HERTFORD HEATH

HN631

Report No.395

<b>Site name and address:</b>	Rush Green Farm, Hertford Heath, Hertfordshire		
<b>County:</b>	Hertfordshire	<b>District:</b>	East Hertfordshire
<b>Village/town:</b>	Hertford Heath	<b>Parish:</b>	Hertford Heath
<b>Planning reference:</b>	3/06/1481/FP	<b>NGR:</b>	TL 3496 1265
<b>Client name and address:</b>	Sterling Building Contractors Ltd, 8 Muirhead Quays, Barking, IG11 7BW		
<b>Nature of work:</b>	Demolition	<b>Former land use:</b>	n/a
<b>Site Status:</b>	n/a	<b>Reason for investigation:</b>	Direction of LPA (PPG16)
<b>Position in planning process:</b>	After full determination (as a condition)	<b>Project brief originator:</b>	Local Authority
<b>Site Code:</b>	HN 631	<b>Other reference:</b>	n/a
<b>Organisation:</b>	Heritage Network	<b>Site Director:</b>	David Hillelson
<b>Project type, methods etc...</b>	Building recording, survey/recording of fabric/structure	<b>Archive Recipient:</b>	Hertfordshire Archives
<b>Start of work</b>	16 <sup>th</sup> October 2006	<b>Finish of work</b>	16 <sup>th</sup> October 2006
<b>Related SMR Nos:</b>	n/a	<b>Periods represented:</b>	
<b>Oasis UID</b>	heritage1-26064	<b>Significant finds:</b>	n/a
<b>Monument types:</b>	House: Detached house		
<b>Physical archive:</b>	n/a		
<b>Previous summaries/reports:</b>	n/a		

**Narrative:**

In order to meet the requirements of a condition on the planning consent for demolition and redevelopment at Rush Green Farm, Hertford Heath, the Heritage Network was commissioned to undertake an Historic Building Record of the former farmhouse.

The site is located c. 1km north of Hertford Heath, to the south of the junction of the A414 with B1502 Stanstead Road, centred on NGR TL 3496 1265 (Figure 1). The ground slopes gently down towards the north.

The site lies in a well documented archaeological landscape, on the west side of the line of Ermine Street, and just outside an Area of Archaeological Significance defined in the District Local Plan. Just to the east is Gamels, or Gambles, Hall, a building of 17<sup>th</sup> century origins within a moated enclosure. The building which forms the focus of the present site is undated and had been partially demolished at the time that the record was commissioned. No internal access or close external examination was possible due to the unsafe condition of the building. The record was limited to photography and written observation.

From the client's site survey and a limited number of photographs taken before the start of works, the property has an Edwardian appearance from the outside, with a gabled portico in the northern (front) elevation. The western elevation has two gabled wings each with two storey bay windows. The southern elevation has seen much recent remodelling, with single storey balconied extensions on either side of a two storey gabled projection with an entrance in the ground floor.

In its latest form the building was brick-built with clay-tiled roofs. From elements of the structure which were exposed in the course of demolition, it appears that the upper storey at least was timber framed and plastered, the brick skin being added later. No elements were observed which provide a clear indication of the earliest date for the building and the phases of its development are also unclear. A building in the general location of Rush Green farmhouse is shown on Dury and Andrews' map of Hertfordshire dated 1766, and on Bryant's map of 1820. An examination of the first edition Ordnance Survey of 1880 (Figure 3) suggests that the plan of the house may have undergone significant alteration since that time.

David Hillelson, 30 March 2007

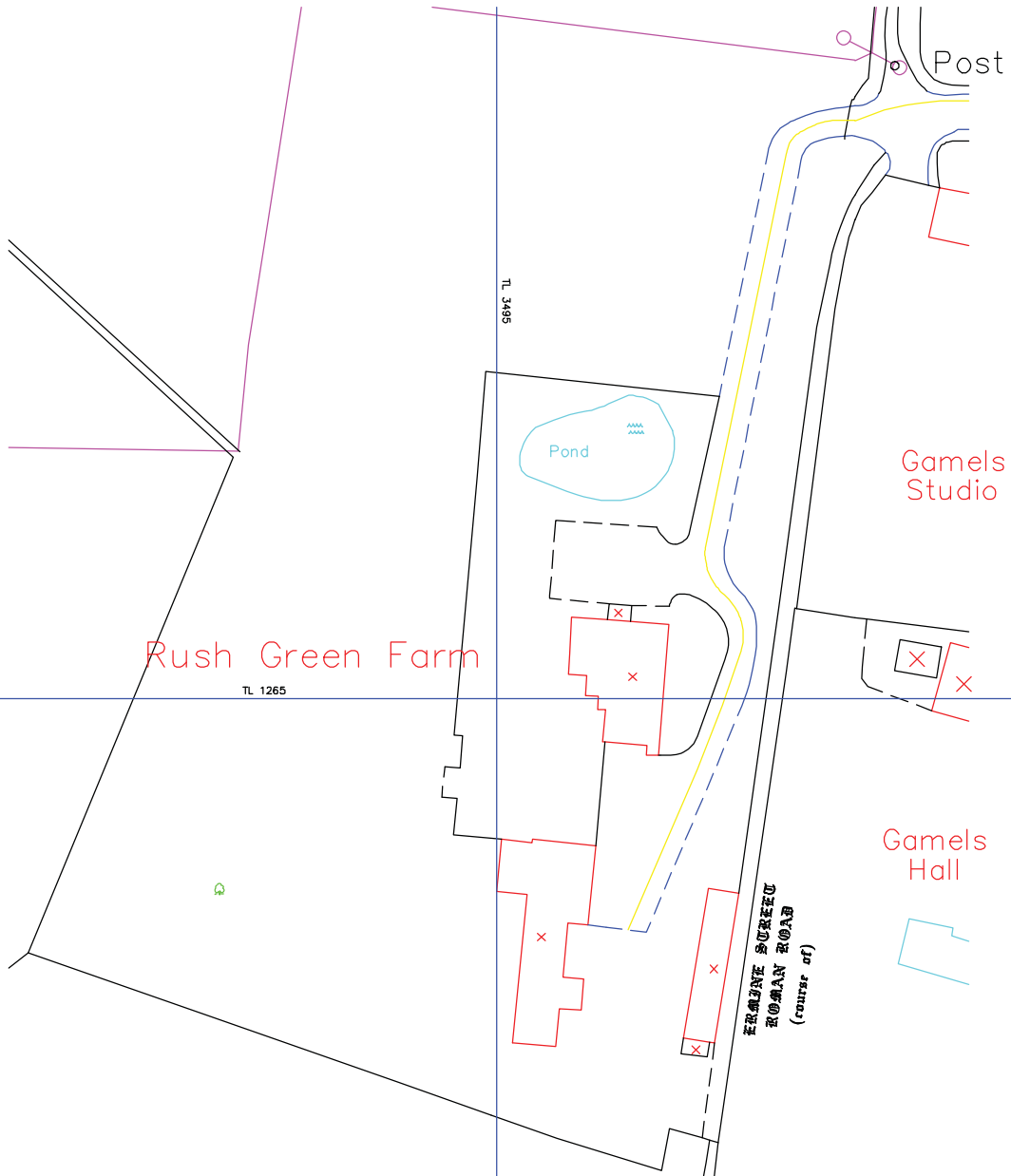
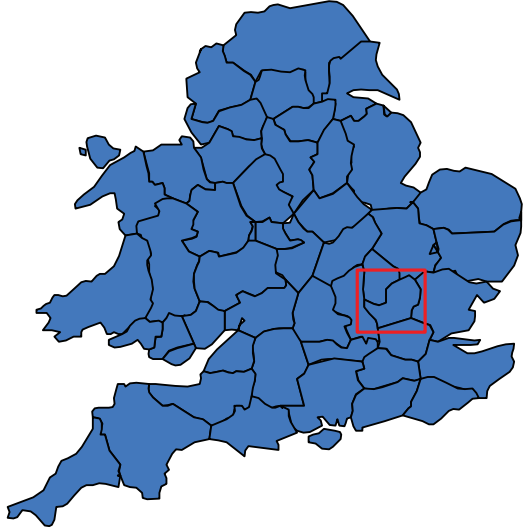
**Illustrations:**

Figure 1 ..... Site location  
Figure 2 ..... Study area showing roof layout  
Figure 3 ..... Ordnance Survey, 1<sup>st</sup> edition, 1880  
  
Plate 1 ..... Southern elevation looking north  
Plate 2 ..... Southern and eastern elevations looking northwest  
Plate 3 ..... Northern and eastern elevations looking southwest  
Plate 4 ..... Northern elevation looking south  
Plate 5 ..... Northern and western elevations looking southeast  
Plate 6 ..... Southern and western elevations looking northeast  
Plate 7 ..... Northern and western elevations looking southeast  
Plate 8 ..... Northern and western elevations prior to demolition  
  
Appendix ..... Black and white photographic log

THE HERITAGE NETWORK LTD

Rush Green Farm, Hertford Heath

HN631



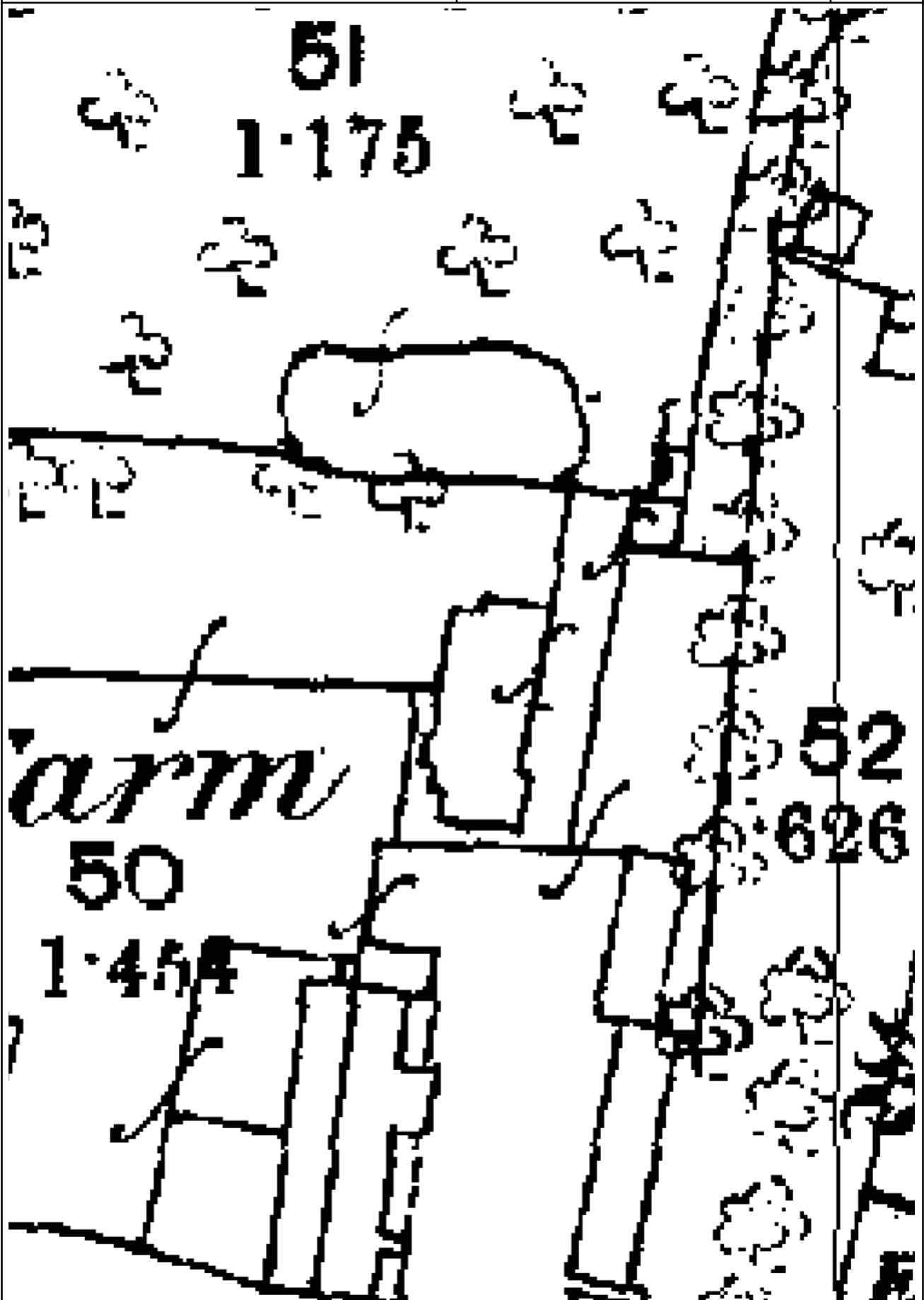
Site Location

Scale 1:1000

Reproduced from the Ordnance Survey with the permission of the controller of Her Majesty's Stationery Office, Licence no.AL100014861

Figure 1





Ordnance Survey 1st edition, 1880

Scale 1:500

Reproduced from the Ordnance Survey with the permission of the controller of Her Majesty's Stationery Office, Licence no.AL100014861

Figure 3



**THE HERITAGE NETWORK LTD**

Rush Green Farm, Hertford Heath

HN631

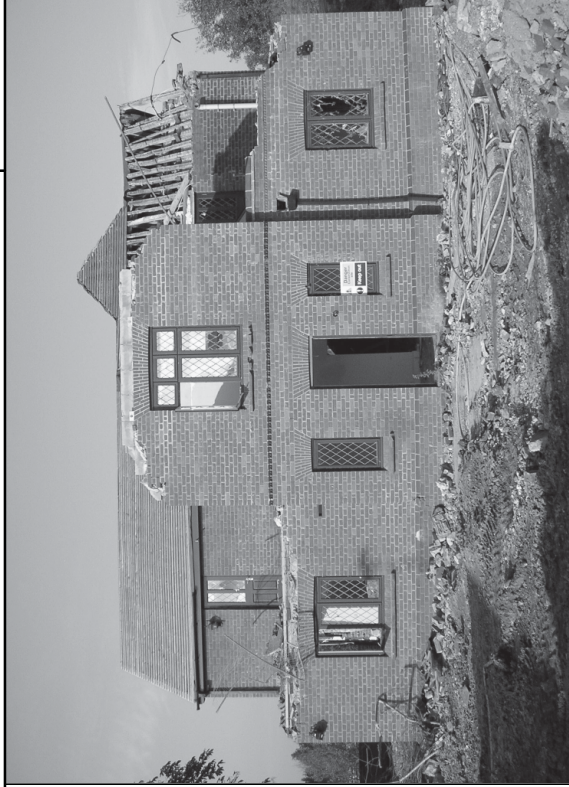


Plate 1: Southern elevation looking north



Plate 2: Southern and eastern elevations looking north west



Plate 3: Northern and eastern elevations looking south west

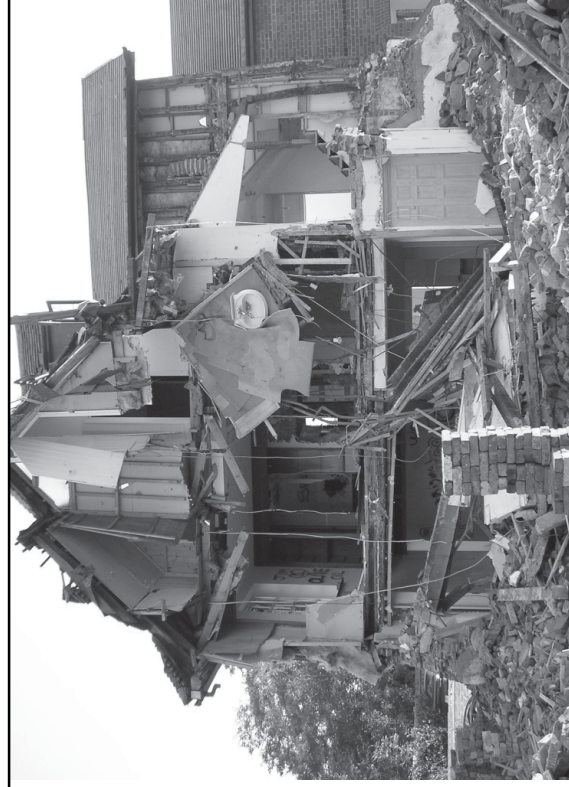


Plate 4: Northern elevation looking south





Plate 5: Northern and western elevations looking south east



Plate 6: Southern and western elevations looking north east

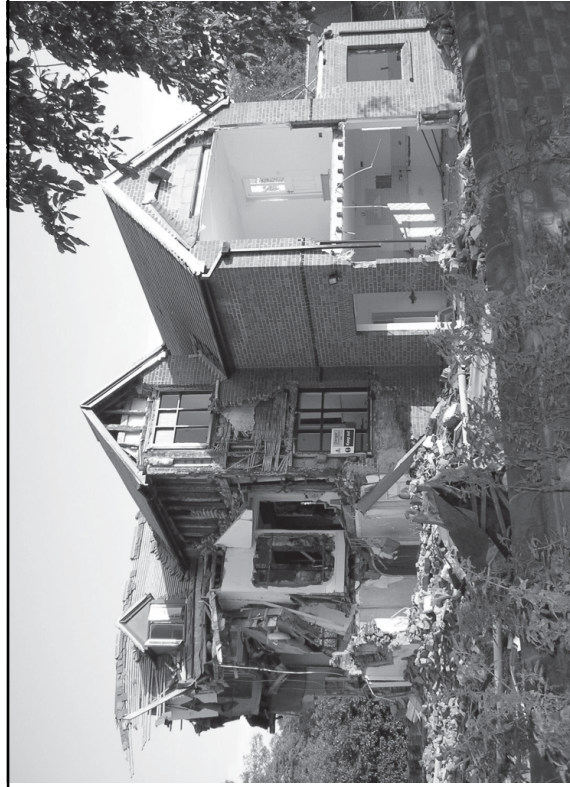


Plate 7: Northern and western elevations looking south east



Plate 8: Northern and western elevations prior to demolition (client's photo)





Frame 1: Southern and eastern elevations looking north west



Frame 2: Southern and eastern elevations looking north west



Frame 3: Eastern elevation looking west



Frame 4: Northern elevation looking south



Frame 5: Northern and western elevations looking south east



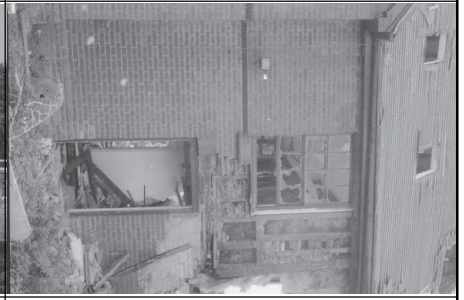
Frame 6: Western elevation looking east



Frame 7: Western elevation looking east



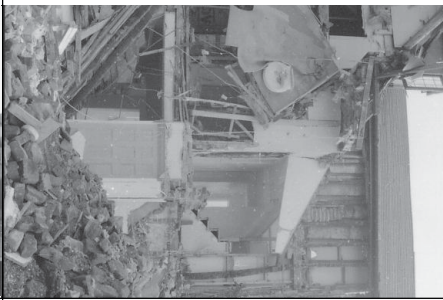
Frame 8: Southern and western elevations looking north east



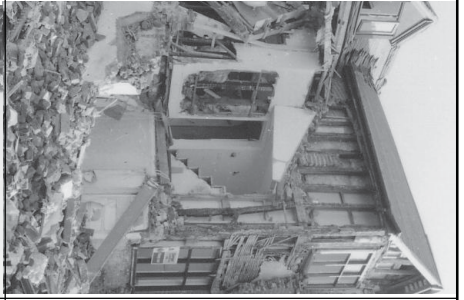
Frame 9: Eastern elevation looking west



Frame 10:



Frame 11: Northern elevation looking south



Frame 12: Northern and western elevations looking south east



Frame 13: Northern and western elevations looking south east



Frame 14: Northern and eastern elevations looking south west



Frame 15: Southern and eastern elevations looking north west