

HERITAGE NETWORK



72-74 SOUTH ROAD Baldock, Hertfordshire

HN709

***Archaeological Evaluation &
Historic Building Impact Assessment Report***



THE HERITAGE NETWORK LTD

Registered with the Institute of Field Archaeologists as an Archaeological Organisation

Archaeological Director: David Hillelson, BA MIFA

72-74 SOUTH ROAD,
Baldock, Hertfordshire

HN709

Archaeological Evaluation
&
Historic Building Impact Assessment

Prepared on behalf of Wheatley Homes Ltd

by

Mark Winter, BSc PgDip

and

Sallianne Wilcox, MA AIFA

Report no.466

April 2008

© The Heritage Network Ltd

11 FURMSTON COURT, ICKNIELD WAY, LETCHWORTH SG6 1UJ
TEL: (01462) 685991 FAX: (01462) 685998

Contents

	Summary	Page i
Section 1	Introduction	Page 1
Section 2	Fieldwork	Page 3
Section 3	Historic Building Assessment.....	Page 9
Section 4	Bibliography	Page 17
Section 5	Illustrations.....	following Page 18
	Appendix 1	Page 19

The cover photograph shows 74 South Road looking southwest

Acknowledgements

The fieldwork for this project was carried out by Sallianne Wilcox, Mark Winter and Mick James. The artefact assessment was undertaken by Andy Fawcett and Mark Winter. The report was edited by David Hillelson.

The Heritage Network would like to express its thanks to Harvey Baker, Wheatley Homes Ltd; Dave Robinson, D and R Construction; and Andy Instone, County Historic Environment Unit, HCC, for their co-operation and assistance in the execution of this project.

Summary

<i>Site name and address:</i>	72-74 South Road, Baldock, Hertfordshire		
<i>County:</i>	Hertfordshire	<i>District:</i>	North Hertfordshire
<i>Village/town:</i>	Baldock	<i>Parish:</i>	Baldock
<i>Planning reference:</i>	08/00076/1	<i>NGR:</i>	TL 2514 3350
<i>Client name and address:</i>	Wheatley Homes Ltd, Wheatley House, Works Road, Letchworth, Herts.		
<i>Nature of work:</i>	New Housing	<i>Former land use:</i>	House and garden
<i>Site Status:</i>	n/a	<i>Reason for investigation:</i>	Direction of local planning authority
<i>Position in planning process:</i>	Pre-determination	<i>Project brief originator:</i>	Local authority
<i>Size of affected area:</i>	2230m ²	<i>Size of area investigated:</i>	107m ²
<i>Site Code:</i>	HN709	<i>Other reference:</i>	n/a
<i>Organisation:</i>	Heritage Network	<i>Site Director:</i>	David Hillelson
<i>Project type, methods etc...</i>	Evaluation & HBIA	<i>Archive Recipient:</i>	North Herts Museums
<i>Start of work</i>	8 th April 2008	<i>Finish of work</i>	17 th April 2008
<i>Related HER Nos:</i>	n/a	<i>Periods represented:</i>	19 th century
<i>Oasis UID:</i>	heritage1-41305(1)	<i>Significant finds:</i>	n/a
<i>Monument types:</i>	1 x modern wall, 1 x undated gully		
<i>Physical archive:</i>	CBM, shell, charcoal and flint		
<i>Previous summaries/reports:</i>	Ashworth, H. 2007 72-74 South Road, Baldock, Herts. Desk-based Archaeological Assessment. Heritage Network Report no.442		

Synopsis:

In order to advise the planning authority of the nature and extent of archaeological remains surviving on a proposed development site located at 72-74 South Road, Baldock, the Heritage Network was commissioned by Wheatley Homes Ltd to carry out a programme of archaeological evaluation and an historic buildings impact assessment.

Five trial trenches of varying lengths were excavated across the area. Identified features consisted of an undated gully and modern wall. Despite the potential for remains dating to the Iron Age and Roman period nothing of this date has been identified.

A rapid survey and detailed digital photographic record of the buildings on the site was undertaken. This, combined with the archaeological desk-based assessment (Ashworth, 2007), has demonstrated that there have been several building phases on the site. The four extant buildings can be divided into two distinctive groups: no. 72 (Building 1), a former farmhouse with its stable block (Building 2) and granary (Building 3) all dating to the 19th century, and no. 74, a detached house built in the grounds of the farm to the south in c1925.

1. Introduction

1.1 This *report* has been prepared on behalf of *Wheatley Homes Ltd* as part of the archaeological evaluation and building assessment of a proposed development site located at 72-74 South Road, Baldock, Hertfordshire.

1.2 The investigation was a predetermination requirement of a planning application submitted to North Hertfordshire District Council (NHDC) (ref.08/00076/1), under the provisions set out in Planning Policy Guidance Note No.16 (PPG16) on Archaeology and Planning (DoE 1990). The extent of the work was defined in correspondence with the Historic Environment Unit (HEU) of Hertfordshire County Council, acting as archaeological advisers to the NHDC.

1.3 The study area consists of a plot of land, occupied by two residential properties, on the junction between South Road and Clothall Road (Figure 1). It is bounded on the north by Clothall Road; on the east by the rear of properties fronting Laxton Gardens; on the west by South Road; and on the south by the neighbouring property, no.62 South Road.

1.4 An archaeological desk-based assessment was prepared by the Heritage Network in November 2007. This showed that considerable archaeological investigation has been carried out in the immediate vicinity of the study area. Previous work has demonstrated that the area of proposed development lies in a well defined archaeological landscape, with a *High* probability of encountering features and finds of late Iron Age, Roman, post-medieval and modern date.

1.5 On the basis of the known archaeology in the vicinity of the present site, the HEU advised that archaeological evaluation of the development site should be undertaken before the planning application could be determined. This was to include an assessment of the standing buildings on the site in order to consider their potential historical significance.

1.6 The aim of the evaluation has been to consider the location, extent, date, character, condition, significance and quality of any remains that were liable to be threatened by the development, and to provide a local and regional, archaeological and historical context for them, in accordance with the current published regional research agenda (Glazebrook 1997, Brown and Glazebrook 2000), should they be discovered. It is considered the evaluation has the potential to contribute to an understanding of the origins, development, and growth of settlement in Baldock.

1.7 The present report is intended to provide the planning authority with sufficient data to allow it to consider the archaeological implications of the proposed development, and to determine what further mitigation measures, if any, may be required to allow the development to proceed.

2. Fieldwork

SITE TOPOGRAPHY AND GEOLOGY

2.1 The site is located on the edge of Baldock town centre on level ground at approximately 70m AOD.

2.2 The drift geology in the area consists of chalky drift and chalk of the Swaffam Prior Association (511e). These are described as *‘well drained calcareous coarse and fine loamy soils over chalk rubble. Some similar shallow soils. Deep non-calcareous loamy soils in places. Striped and polygonal soil patterns locally. Slight risk of water erosion’* (SSEW 1983).

METHODOLOGY

2.3 All fieldwork was carried out in accordance with the approved Project Design, current health and safety legislation, and the appropriate IFA and ALGAO guidance documents.

2.4 Five trenches were opened using a tracked mini-digger fitted with a 1.2m wide toothless ditching bucket (Figure 2). Spoil from the machining was inspected for archaeological artefacts. Trenches were machined to the first significant archaeological horizon.

2.5 The trenches were cleaned by hand, and all potential archaeological features and deposits were sampled to ascertain their nature, depth, date, and quality of preservation.

2.6 All identified contexts were photographed and recorded using the appropriate pro-forma. Scaled plans and sections were drawn on drafting film at scales of 1:10 and 1:50. The trenches were located using a total station theodolite.

RESULTS

Trench 1

2.7 Trench 1 was located in the western corner of the site (Figure 2). It measured 12.20m in length, 1.6m in width, and 0.70m in depth (Plate 1).

2.8 The stratigraphy in the trench consisted of a dark greyish brown (10YR 4/2) layer of sandy silt topsoil, 0.30m in depth and containing occasional small stone inclusions. This overlay a brown (10YR 4/3) silty clay subsoil containing moderate chalk flecks and measuring 0.40m deep. The natural geology was a white (2.5YR 8/1) chalk.

2.9 Trench 1 contained no archaeological features or deposits.

Trench data:

Length (m):	12.20	Width (m):	1.60		Maximum Depth (m):	0.70	Orientation	E-W	
Level at N end of Trench (mOD)			Top	69.14	Level at S end of Trench (mOD)			Top	69.13
			Base	68.50				Base	68.61
Context	Type	Description	Dimensions (m)						
			Length	Width		Depth			
Topsoil	Layer	Dark greyish brown (10YR 4/2) sandy silt with occasional small stone inclusions.	12.20		1.60		0.30		
Subsoil	Layer	Brown (10YR 4/3) silty clay with moderate chalk inclusions.	12.20		1.60		0.40		
Natural	Laver	White (10YR 8/10) chalk natural.	12.20		1.60		-		

Trench 2

2.10 Trench 2 was located in the front garden of no. 72 South Road (Figure 2). It measured 13.20m in length, 1.60m in width, and 0.70m in depth (Plate 2).

2.11 The stratigraphy in the trench consisted of a dark greyish brown (10YR 4/2) layer of sandy silt topsoil, 0.40m in depth and containing occasional small stone inclusions. This overlay a brown (10YR 4/3) silty clay subsoil containing moderate chalk flecks and measuring 0.30m deep. The natural geology was a white (2.5YR 8/1) chalk.

2.12 Trench 2 was crossed by a gully feature [201] which ran in a northwest-southeast direction (Figure 3). The feature measured 1.40m+ in length by 0.72m in width by 0.15m in depth and contained a yellowish brown (10YR 5/4), firm, clayey silt fill with frequent fine chalk, occasional small sub angular flint, and very occasional small chalk inclusions together with CBM and shell.

Trench data:

Length (m):	13.20	Width (m):	1.60		Maximum Depth (m):	0.70	Orientation	E-W	
Level at N end of Trench (mOD)			Top	69.26	Level at S end of Trench (mOD)			Top	69.18
			Base	68.36				Base	68.39
Context	Type	Description	Dimensions (m)						
			Length	Width	Depth				
Topsoil	Layer	Dark greyish brown (10YR 4/2) sandy silt with occasional small stone inclusions.	13.20			1.60		0.40	
Subsoil	Layer	Brown (10YR 4/3) silty clay with moderate chalk inclusions.	13.20			1.60		0.30	
Natural	Layer	White (10YR 8/10) chalk natural.	13.20			1.60		-	
201	Cut	Gully	1.40+			0.72		0.15	
202	Fill	Yellowish brown (10YR 5/4) firm clayey silt gully fill. Contains frequent fine chalk, occasional small sub angular flint and chalk inclusions.	1.40+			0.72		0.15	

Trench 3

2.13 Trench 3 was located to the rear of 72 South Road (Figure 2). It measured 15.10m in length, 1.60m in width, and 0.58m in depth (Plate 3).

2.14 The stratigraphy in the trench consisted of a dark greyish brown (10YR 4/2) layer of sandy silt topsoil, 0.30m in depth and containing occasional small stone inclusions. This overlay a brown (10YR 4/3) silty clay subsoil containing moderate chalk flecks and measuring 0.40m deep. The natural geology was a white (2.5YR 8/1) chalk.

2.15 Trench 3 contained no archaeological features or deposits.

Trench data:

Length (m):	15.10	Width (m):	1.60		Maximum Depth (m):	0.58	Orientation	NE-SW	
Level at NE end of Trench (mOD)			Top	69.17	Level at SW end of Trench (mOD)			Top	69.32
			Base	68.59				Base	68.68
Context	Type	Description	Dimensions (m)						
			Length	Width	Depth				
Topsoil	Layer	Dark greyish brown (10YR 4/2) sandy silt with occasional small stone inclusions.	15.10	1.60	0.37				
Subsoil	Layer	Brown (10YR 4/3) silty clay with moderate chalk inclusions.	15.10	1.60	0.16				
Natural	Layer	White (10YR 8/10) chalk natural.	15.10	1.60	-				

Trench 4

2.16 Trench 4 was located on the eastern side of the site (Figure 2). It measured 19.90m in length, 1.6m in width, and up to 0.80m in depth (Plate 4).

2.17 The stratigraphy in the trench consisted of a dark greyish brown (10YR 4/2) layer of sandy silt topsoil, 0.30m in depth and containing occasional small stone inclusions. This overlay a brown (10YR 4/3) silty clay subsoil containing moderate chalk flecks and measuring 0.18 to 0.40m deep. The natural geology was a white (2.5YR 8/1) chalk.

2.18 Trench 4 contained no archaeological features or deposits (Figure 6).

Trench data:

Length (m):	19.90	Width (m):	1.60		Maximum Depth (m):	0.80	Orientation	NE – SW	
Level at NE end of Trench (mOD)			Top	69.49	Level at SW end of Trench (mOD)			Top	69.22
			Base	68.69				Base	68.64
Context	Type	Description	Dimensions (m)						
							Length	Width	Depth
Topsoil	Layer	Dark greyish brown (10YR 4/2) sandy silt with occasional small stone inclusions.	19.90				1.60	0.30	
Subsoil	Layer	Brown (10YR 4/3) silty clay with moderate chalk inclusions.	19.90				1.60	0.40	
Natural	Laver	White (10YR 8/10) chalk natural.	19.90				1.60	-	

Trench 5

2.19 Trench 5 was located on the eastern side of the site (Figure 2). It measured 6.60m in length, 1.60m in width, and 0.90m in depth (Plate 5).

2.20 The stratigraphy in the trench consisted of a dark greyish brown (10YR 4/2) layer of sandy silt topsoil, 0.47m in depth and containing occasional small stone inclusions. This overlay a brown (10YR 4/3) silty clay subsoil containing moderate chalk flecks and measuring 0.38m deep. The natural geology was a white (2.5YR 8/1) chalk.

2.21 Trench 5 contained brick wall [501], formed of red bricks with a concrete mortar (Figure 5). This survived to a height of 5 courses and was two bricks wide. The wall appeared to be set in the subsoil. An additional makeup layer (502) was a very dark greyish brown (10YR 3/2) loose silty clay which measured 0.22m deep by 1.10m wide.

Trench data:

Length (m):	6.60	Width (m):	1.60		Maximum Depth (m):	0.90	Orientation	E-W	
Level at E end of Trench (mOD)			Top	69.40	Level at W end of Trench (mOD)			Top	69.35
			Base	68.55				Base	68.46
Context	Type	Description	Dimensions (m)						
			Length		Width		Depth		
Topsoil	Layer	Dark greyish brown (10YR 4/2) sandy silt with occasional small stone inclusions.	6.60				1.60	0.47	
Subsoil	Layer	Brown (10YR 4/3) silty clay with moderate chalk inclusions.	6.60				1.60	0.38	
Natural	Layer	White (10YR 8/10) chalk natural.	6.60				1.60	-	
501	Wall	Brick wall	1.00 +				0.25	0.35	
502	Layer	Very dark greyish brown (10YR 3/2) loose silty clay make up layer.					1.10	0.22	

FINDS ASSESSMENT**Concordance of main finds types**

Context	CBM		Shell		Charcoal		Flint		Comments
	No	Wt	No	Wt	No	Wt	No	Wt	
501	1	2460							
202	4	5	9	25	3	0	1	0	
Total	5	2465	9	25	3	0	1	0	

Ceramic Building Material

2.22 A total of 5 fragments of CBM, weighing 2465g, were recovered from two stratified contexts during the evaluation.

2.23 The four fragments from (202) are all extremely small and, as such, do not provide any useful dating evidence. The brick recovered from wall [501] was red with a cement mortar and measured 0.23m by 0.10m by 0.07m.

Recommendations

2.24 No further work is proposed at present on this material. Should further work take place on this site, it is proposed that the material recovered during this phase should form part of the analysis of the entire assemblage from the site.

Shell

2.25 Nine pieces of shell weighing 25g were collected from context (202). These were mainly snail shell, however one fragment of oyster shell was recovered.

Recommendations

2.26 No further work is proposed at present on this material. Should further work take place on this site, it is proposed that the material recovered during this phase should form part of the analysis of the entire assemblage from the site.

Flint

2.27 A single piece of flint, weighing less than 5g, was recovered from gully [201]. On close examination this does not appear to have been affected by human agency, and is not considered to be of archaeological significance.

Recommendations

2.28 No further work is proposed on this material.

Charcoal

2.29 Three fragments of charcoal, weighing less than 5g, were recovered from context (202).

Recommendations

2.30 No further work is proposed on this material.

DISCUSSION

2.1 Five trenches were excavated in order to investigate the archaeological potential of the present site. The evaluation revealed the presence of two features.

2.2 Trench 2 (Figure 3) contained a small gully feature [201] which was aligned northwest-southeast. This contained a small amount of CBM, some snail and oyster shell, charcoal and a single piece of flint. The feature contained only one fill which could not be distinguished from the subsoil. This may represent part of a post-medieval field system and may be a drainage channel.

2.3 Trench 5 (Figure 4) contained wall [501]. This was formed from red bricks and was laid in the subsoil. It may represent the remains of a 19th century farm building which can be seen is shown on the Ordnance Survey map of 1898 (Figure 7). Layer (502) was observed between the topsoil and subsoil. Its location abutting wall [501] suggests it is a make up layer deposited to raise the ground level on the eastern side of the wall.

2.4 During the evaluation it was noted that there was a slightly greater level of build up at the north-eastern end of the site. This was most noticeable in Trench 4 and may be the result of levelling this area after removal of the 19th century farm buildings.

Conclusion

2.5 The archaeological evaluation has demonstrated the presence of a late nineteenth century wall and undated gully. Despite the site's proximity to significant remains dating from the Iron Age onwards no evidence of this date was observed during the current investigation.

2.6 On the basis of these findings, it is considered that the risk that significant occupation features from any period predating the post-medieval could be disturbed in the course of development is Low.

Confidence Rating

2.7 During the course of the fieldwork, the conditions were generally acceptable for the identification of potential features and deposits, and for their investigation.

2.8 There are no circumstances which would lead to a confidence rating for the work which was less than High.

3. Historic Building Assessment

BUILDING 1 (no. 74)

EXTERIOR

3.1 Building 1 is a detached, yellow brick (now painted), two storey, mid - late 19th century former farmhouse, built in Flemish bond with a gabled slate roof and end chimney stacks. The west elevation (front) is symmetrical with a central doorway and five windows, and would have originally had a double pile four-cell plan with a central hallway. At the rear of no. 74 is a large single storey flat roofed extension. It occupies most of the ground floor east elevation and adjoins the main house by a doorway (possibly in the position of the old back door) at the end of the central hallway opposite the front door. No. 74 stands south of and close to Building 2 which is connected to Building 1 by large heating pipes.

3.2 West elevation: symmetrical front with central doorway comprising a moulded doorcase surround and plain panelled reveals with a plain frieze above and cornice hood over (probably early 20th century and contemporary with the panelled door). The lower part of the surround is missing. Six-panel replacement door with glazing to the upper panels. Four brick pilasters each with brick cornice and dentil under the eaves; one to each end of the front elevation and two at the centre, one either side of the doorway. Two deeply recessed ground floor windows and three deeply recessed first floor windows, all original and most have original glass. All five windows have segmental brick headers and brick keystone in relief, and projecting stone sills. Four windows have 2-over-2 sashes with horns and vertical side glazing bars. The central first floor window is slightly smaller but similarly styled; 1-over-1 sash with horns and vertical side glazing bars.

3.3 South elevation: no windows or doorways along the south elevation of the main house (covered with ivy). Modern multi-paned double doors to the east elevation of the rear extension.

3.4 East elevation: four windows along the east elevation of the main house; three to the first floor and one to the ground floor. Three deeply recessed first floor windows with segmental brick headers and brick keystone, and projecting stone sills. Two casement mullion windows, one with frosted glass (both probably replaced) located either side of an original, narrow, multi-paned fixed window. On the ground floor to the south end is an inserted modern multi-paned casement window (replacing an earlier smaller opening). Modern double doors and full length side windows to the east elevation of the rear extension.

3.5 North elevation: modern multi-paned casement window inserted along the north elevation next to an inserted doorway with a modern part glazed multi-paned door and corrugated Perspex hood over. Two large pipes enter on the north elevation from Building 2 (modern coke / coal boiler / furnace); the larger pipe utilises the flue of the north chimney stack. Projecting shouldered chimney stack to the north elevation of the rear extension with a tall stack rising over the flat roof.

INTERIOR

Ground floor (Figure 8)

3.6 Room 1: hall. Formerly a front to back corridor with up to eight doorways, now open to the northwest leading into the ante room (room 2). Modern chamfered skirting board to all (small part of original 19th century skirting board survives). Six doorways; three have original four-panel doors with chamfered and stopped doorframes (rooms 4 & 8), original four-panel door to the stairs with a plain door frame (room 5), an original tongue and groove door to the cupboard under the stairs (room 6), and the six-panel replacement front door with glazing to the upper panels.

3.7 Room 2: anteroom. Formerly part of the front room (north side), now open to the south leading into the hall (room 1). Modern chamfered skirting board to all. Two modern doorways; one leading into the bathroom (room 3) and one to the boiler cupboard.

3.8 Room 3: bathroom. Formerly part of the front room (north side). Modern chamfered skirting board to all. Modern door into the anteroom (room 2). Original 2-over-2 sash window with horns and vertical side glazing bars to the west elevation (secondary glazing).

3.9 Room 4: kitchen and pantry. Formerly part of the front room (north side) and the original kitchen to the rear. Modern chamfered skirting board to all. Three doorways; original four-panel door to the south leading into the hall, modern door into the pantry, and an inserted modern part glazed multi-paned door to the north elevation leading into the yard. Inserted modern multi-paned casement window next to this exterior door. To the north elevation, partly in the pantry and partly in the kitchen is a projecting chimney breast (blocked fireplace, now only the flue is used by the coke / coal boiler / furnace located inside Building 2).

3.10 Room 5 & 6: staircase with cupboard under. Original four-panel door with a plain door frame leading onto the timber staircase that turns ninety degrees from the southeast corner of the doorframe up to a landing (room 9). Partly carpeted with nosing to the treads and deep wall string. Tongue and groove door to the cupboard. Original position and form to both.

3.11 Room 7: living room. Large single room in the 1960s extension with modern deep skirting board, moulded dado rail and coving. Three doorways, two leading outside; one modern double door to the east elevation with full length side windows and one modern multi-paned double door to the south elevation. Modern internal multi-paned door to the west elevation leading into the hall (probably occupying the position of the former back door).

3.12 Room 8: sitting room. Formerly two separate rooms, the front room (south side) and rear parlour. Modern chamfered skirting board to all. Two doorways; original four-panel doors with chamfered and stopped doorframes to the north elevation. Dual aspect with two windows; to the west is an original 2-over-2 sash window with horns and vertical side glazing bars, and a projecting sill on brackets below. Modern multi-paned casement window to the east elevation (replacing an earlier smaller opening).

First floor (Figure 9)

3.13 Room 9: landing and hall. Continues from the staircase on the ground floor (room 5). Landing turns a hundred and eighty degrees then up two steps onto the first floor hallway running from east to west. Original newel post and curved hand rail with plain square balusters along the landing by the steps up to (and adjoining) a modern newel post, hand rail and balusters that run northward over the staircase towards room 10 (contemporary with the inserted step at the approach). Narrow multi-paned window to the stair landing on the east elevation. Original plain skirting board to the hallway. Five doorways, one to each room; four with original four-panel doors with spring latches and chamfered and stopped door frames. Modern door to room 10.

3.14 Room 10: bathroom. Former rear bedroom (north side). Original plain skirting boards to all. Modern door leading to the hall and landing (room 9). Casement mullion window with frosted glass (probably replaced).

3.15 Room 11: bedroom (front north side). Original plain skirting boards to all. Original four-panel door with spring latch and chamfered and stopped door frame. Original 2-over-2 sash window with horns and vertical side glazing bars (secondary glazing). Built-in modern wardrobe to the north elevation over a central projecting chimney breast with an external brick hearth (former open fireplace now blocked).

3.16 Room 12: cloakroom. Original plain skirting boards to all. Original four-panel door with spring latch and moulded frame. In-filled fanlight window above. Original 2-over-2 sash window with horns and vertical side glazing bars.

3.17 Room 13: bedroom (front south side). Original plain skirting boards to all. Original four-panel door with spring latch and chamfered and stopped door frame. Original 2-over-2 sash window with horns and vertical side glazing bars (secondary glazing). Narrow chimney breast to the south elevation (never operated as a fireplace).

3.18 Room 14: bedroom (rear south side). Original plain skirting boards to all. Original four-panel door with spring latch and chamfered and stopped door frame. Casement mullion window (probably replaced). Series of four timber boarded in-built cupboards to the south elevation.

DISCUSSION

3.19 The main two storey house at 72 South Road, Baldock is thought to date to c1870 when it was built as the farmhouse to a small farm with some curtilage outbuildings. The house retains much of its vernacular appearance along the front elevation with its symmetrical arrangement and surviving features including its original sash windows. Some of the other windows have been replaced or inserted along the remaining side and rear elevations. A large single storey extension was added at the rear of the house, probably during the 1960s, which is thought to utilise the former back door of the house at the end of the main hallway opposite the front door on the west elevation.

3.20 Most of the changes that have occurred at no. 72 relate to the internal layout of the ground floor. The double pile four-cell plan has been altered:

- the two former front and rear rooms on the southern side have been knocked through into one long room with dual aspect (room 8)
- the north elevation of the hallway (room 1) next to the front door has been knocked through to create the anteroom (room 2) with its boiler cupboard
- a new wall was inserted to create a ground floor bathroom (room 3) in the former front room to the north side
- the remaining part of the front and rear rooms on the northern side have been knocked through into one room to create a kitchen (room 4) with a larder running west adjacent to the bathroom.

3.21 Only two features remain unaltered on the ground floor, the staircase up to the stairs (room 5) and the cupboard under the stairs (room 6). Some of the original panelled doors with their chamfered and stopped door frames, and latch timber boarded doors survive on the ground floor (rooms 4, 5, 6 & 8). The skirting boards throughout the ground floor were replaced during the 20th century. Although chimney breasts from two former fireplaces survive on the ground floor (room 4 and room 8), there are no open fireplaces, surrounds or mantels.

3.22 On the first floor the arrangement of the rooms remains as built in c1870. In addition their fabric such as original panelled doors with spring latches, skirting boards, and some in-built cupboards also remain. There would originally have been only one open fireplace on the first floor, in room 11. However only the brick hearth of the former fireplace survives inside a modern built-in wardrobe.

BUILDING 2 (former stable block at no. 74)

EXTERIOR

3.23 Building 2 is a rectangular single storey brick building with a gabled pantile roof that stands to the west of Building 1, the former farmhouse, and is now used for storage and the garden tool shed. It also holds a large mid – late 20th century boiler / furnace that connects to the main house by large pipes, and forms part of the northern boundary of the property. There are no doors or windows to the north, east, and west elevations.

3.24 The materials used in its construction varies from yellow brick that is comparable with that recorded in Buildings 1 and 3, to modern fletton bricks, yellow and orange ‘reclaimed’ brick and a number of heavily burnt hand-made older bricks. The yellow brick is used mostly on the west elevation of the building where it is laid in Flemish bond with some also found at the west end of the north and south elevations.

3.25 South elevation: two windows and two doorways to the south elevation. To the west end is a long wood framed window and a tongue and groove latch door. To the east end is a long transom and mullion wood framed window and a boarded double door with weatherboarding over.

INTERIOR (Figure 10)

3.26 Building 2 has six bays and is divided into two equal parts by a timber partition up to wall height. The west part is open with a concrete floor under the modern boiler / furnace at the west end from which are two large pipes, one in the south elevation (heating pipe leading into the kitchen of Building 1) and one to the west elevation (feeding into the flue of Building 1). The remainder of the floor to the east is brick laid. Simple timber rafter roof with two tiebeams running north to south and a queen strut roof truss. The east part is also open, but a timber post survives from a former stall partition and a further post supports a tiebeam in the middle of the room. This abuts a two sided brick wall that forms a small pen / storage area along the south elevation. The flooring is brick laid throughout. Simple timber rafter roof with three tiebeams running north to south and a queen strut roof truss.

DISCUSSION

3.27 Building 2 is thought to have originally been a stable block that formed part of a small group of outbuildings within the curtilage of the farmhouse. It may have originally been constructed in the mid-late 19th century, thus being contemporary with the farmhouse (Building 1). However, much of the original building has been altered through either change of use over time or following structural failures due to its position along the roadside by the roundabout.

BUILDING 3 (former granary and lean-to at no. 74)

EXTERIOR

3.28 Building 3 is a small, rectangular, single storey, yellow brick building with a gabled slate roof with a tall clay chimney pot at its northeast corner. It stands to the east of Building 2, the former stable block, and is now used for storage. Building 3 forms part of the northern boundary wall of the farm which continues eastward with curved brick coping to the top. There are three buttresses on the north side of the wall and one on the south side. Adjoining both the wall and the gable roofed building is a lean-to with two timber posts, two tiebeams running north to south and a corrugated iron sloping roof facing south. Although mostly built in yellow brick in Flemish bond, the north elevation has approximately ten rows of red brick at its base.

3.29 There are two doorways in the western half; a tongue and groove latch door in the west elevation with Perspex above covering an opening, and a former doorway with segmental headers now blocked with timber (original door missing) to the south. The lean-to to the east is open on the south and east sides.

INTERIOR (Figure 11)

3.30 Building 3 has five bays, three within the gabled west end and two that form the lean-to to the east. The west part has two tiebeams that run north to south which support a drying / storage area, and a simple rafter roof. In the northeast corner are the remains of a possible chimney for drying out grain, and the floor is brick laid. The lean-to to the east lies on a dirt floor with two timber posts and two tiebeams that run north to south and sit within the boundary wall.

DISCUSSION

3.31 The western part of Building 3, with the gabled slate roof, is thought to have originally been a granary constructed in the late 19th century, thus being slightly later in date than the farmhouse (Building 1). The lean-to was added along the boundary wall to the east of the granary in the early - mid 20th century and formed part of a small group of outbuildings within the curtilage of the farmhouse. Much of the original plan and fabric of the granary has been retained.

BUILDING 4 (no. 72)

EXTERIOR

3.32 72 South Road, Baldock is a detached, red brown and orange brick, two storey, early – mid 20th century house built in stretcher bond with a gabled tile roof and two chimney stacks. The west elevation (front) is symmetrical with a central projecting porch, and there are four ground floor windows and one first floor window. There is brick banding to the east and west elevations at eaves level, and the eaves also over hang on these sides. The house stands separate to no. 74, but was built within its grounds in c1925. It has been added to and extended in a peace-meal fashion since the 1930s, the last being a modern conservatory attached to the rear of the property in c2000.

3.33 West elevation: symmetrical front with central doorway comprising a projecting, flat roofed porch with brick banding detail and a fixed glazed window to each side return, and a timber board effect door. There are four ground floor flush windows, two small fixed windows and two transom and mullion casement windows, all with a lead drip mould above. One transom and mullion dormer window to the first floor that breaks through the roof line.

3.34 South elevation: canted bay with a flat roof over and an aluminium window to the ground floor. Transom and mullion casement window to the gable. Concrete kneelers at gable ends.

3.35 North elevation: in the main house is a transom and mullion casement window to the gable. Concrete kneelers at gable ends. There is a flush casement window divided into three parts on the ground floor within the flat roofed extension and a single window in each of its side returns. On the ground floor is also an internal porch with a recessed door that leads into the house. Next to it, within the porch, is a door leading westwards into the WC. It has a small flush casement window in the north elevation with a lead drip mould above.

3.36 East elevation: in the main house are two transom and mullion dormer windows to the first floor that break through the roof line. On the ground floor to the south is a transom and mullion casement window with a lead drip mould above. In the flat roofed two storey extension is a modern casement window to the first floor and a modern casement to the ground floor south side return. Under the sloping roof to the north is a further modern casement window to the ground floor. A modern conservatory projects from the rear of the house at the centre of the east elevation with a brick base sill, windows facing north and south and double doors facing east. This is entered from sliding doors in the wall of the house.

INTERIOR

3.37 The interior was not inspected.

DISCUSSION

3.38 The main two storey house at 74 South Road, Baldock is thought to date to c1925 when it was built as a house in the ground of the neighbouring farm, no. 72. The house retains much of its original character along the front elevation with its symmetrical arrangement and surviving features. The porch is thought not to be contemporary, and was possibly added in c1930. All the windows to the original part of the house survive, especially to the west elevation. However there have been several additions to the property, mostly to the rear. These are:

- a two storey addition to the centre of the east elevation with a flat roof providing a further bedroom and a larger living room with sliding doors at sometime in the 1970s
- a single storey extension with a sloping tile roof to the north of (and also part of and contemporary with) the two storey addition
- a single storey flat roof extension to the kitchen area on the north elevation probably dating to the 1950s
- a modern conservatory of c2000 built onto the rear of the two storey addition of the 1970s

CONCLUSION

3.39 A rapid survey and detailed digital photographic record of the buildings at the site, together with the archaeological desk-based assessment conducted in November 2007 by the Heritage Network, shows that there have been several different building phases at 72 – 74 South Road, Baldock. While some structures have been demolished, others have survived and now four buildings remain on the site. These buildings can be divided into two distinctive groups; no. 72 (Building 1) a former farmhouse with its stable block (Building 2), and granary (Building 3), all dating to the 19th century, and no. 74, a detached house built in the grounds of the farm to the south in c1925 (although not shown on the 1937 Ordnance Survey map).

3.40 The farmhouse (Building 1) is thought to have been built in c1870 and is the largest most complete structure on the site. The arrangement of the rooms on the first floor remain as built and many of their original features have been retained (panelled doors with spring latches, skirting boards, and some in-built cupboards). On the ground floor however, the original floor plan has been altered and many of the original features (such as fireplaces and skirting boards) were removed during the 20th century. In the 1960s a large extension was built at the rear which resulted in the removal of some of the former ground floor doors and windows along the east elevation. The front (west) elevation, however, retains its window and door arrangement including the retention of original sash windows. The outbuildings associated with the farmhouse show that it probably continued as a small farmstead until the 1920s or 1930s when some other

buildings on the site were demolished. This group represents a surviving small rural mid – late 19th century farmstead that stands upon the boundary between the urban and rural setting.

3.41 No. 74 was probably constructed after no. 72 became a private residence and was no longer functioning as a small farmstead. No. 74 retains some of its original character, particularly along the front (west) elevation with its symmetrical arrangement and surviving features, and is typical of the period. There have been a series of additions to the side and rear which suggests that there would be few, if any, internal surviving features.

4. Bibliography

Ashworth, H 2007 *72-74 South Road, Baldock, Hertfordshire: Desk-based Archaeological Assessment*. Heritage Network rep. 442.

Institute of Field Archaeologists, 1999, *Standard and Guidance for Archaeological Field Evaluation*.

Soil Survey of England and Wales 1983 *Soil Map Sheet 4, Eastern England, Scale 1:250,000*

Winter, M., 2008 *72-74 South Road, Baldock, Hertfordshire Project Design: Archaeological Evaluation and Building Assessment*, Heritage Network

5. Illustrations

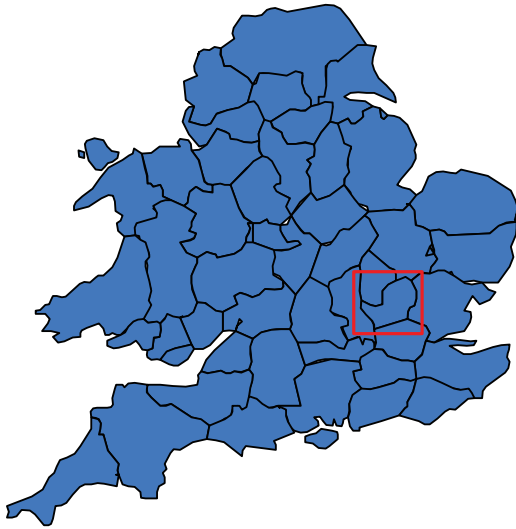
Figure 1.....	Site location
Figure 2.....	Site layout
Figure 3.....	Plan and section of Trench 2
Figure 4.....	Plan and section of Trench 5
Figure 5.....	Feature sections
Figure 6.....	Plan and section of Trench 4
Figure 7.....	Ordnance Survey Map, 1898
Figure 8.....	Building 1. Ground floor plan
Figure 9.....	Building 1. First floor plan
Figure 10.....	Building 2. Floor plan
Figure 11.....	Building 3. Floor plan
Plate 1.....	Trench 1, looking west
Plate 2.....	Trench 2, looking west
Plate 3.....	Trench 3, looking southwest
Plate 4.....	Trench 4, looking southwest
Plate 5.....	Trench 5, looking west
Plate 6.....	Sample trench section
Plate 7.....	Gully [201]
Plate 8.....	Wall [501]
Plate 9.....	Exterior. Building 1, west elevation
Plate 10.....	Exterior. Building 1, east elevation
Plate 11.....	Interior. Building 1, room 1, hall facing west
Plate 12.....	Interior. Building 1, room 5, staircase facing north

Plate 13.....	Interior. Building 1, room 4, kitchen, north elevation
Plate 14.....	Interior. Building 1, room 7, living room facing north
Plate 15.....	Interior. Building 1, room 8, sitting room, facing west
Plate 16.....	Interior. Building 1, room 11, bedroom west elevation
Plate 17.....	Interior. Building 1, room 9, stair balustrade
Plate 18.....	Interior. Building 1, room 9, hallway facing west
Plate 19.....	Interior. Building 1, room 11, bedroom north elevation, hearth
Plate 20.....	Interior. Building 1, room 13, bedroom north elevation
Plate 21.....	Interior. Building 1, room 14, bedroom east elevation
Plate 22.....	Interior. Building 1, example of spring latch on first floor doors
Plate 23.....	Exterior. Building 2, south elevation
Plate 24.....	Interior. Building 2, east end, west elevation
Plate 25.....	Interior. Building 2, east end, north elevation former stall post
Plate 26.....	Interior. Building 2, east end, pen / storage
Plate 27.....	Interior. Building 2, west end, roof structure facing west
Plate 28.....	Interior. Building 2, west end, boiler / furnace
Plate 29.....	Exterior. Building 3, south elevation
Plate 30.....	Interior. Building 3 (granary) roof facing east
Plate 31.....	Exterior. Building 4, west and south elevation
Plate 32.....	Exterior. Building 4, north and east elevation

THE HERITAGE NETWORK LTD

72-74 South Road, Baldock

HN709

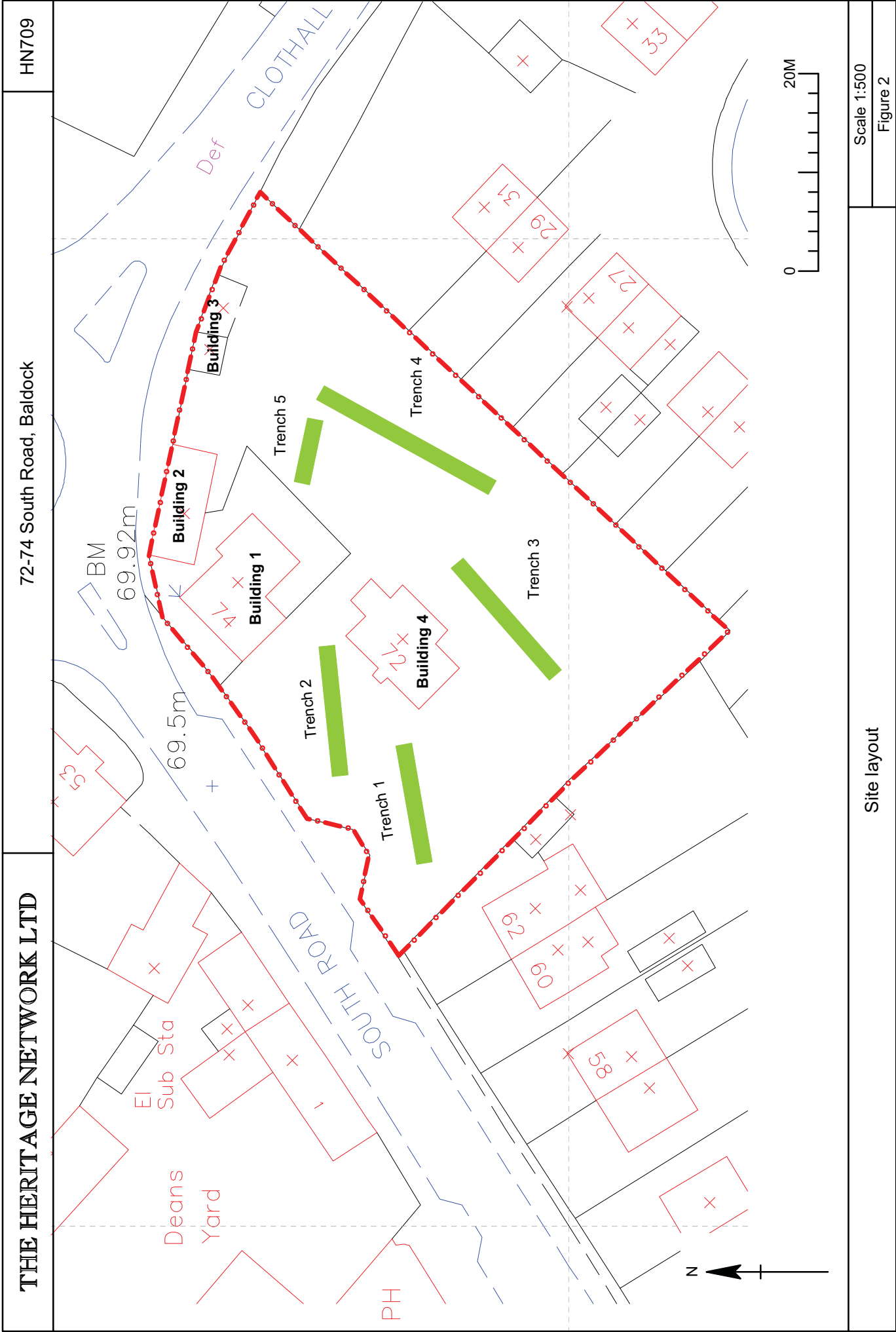


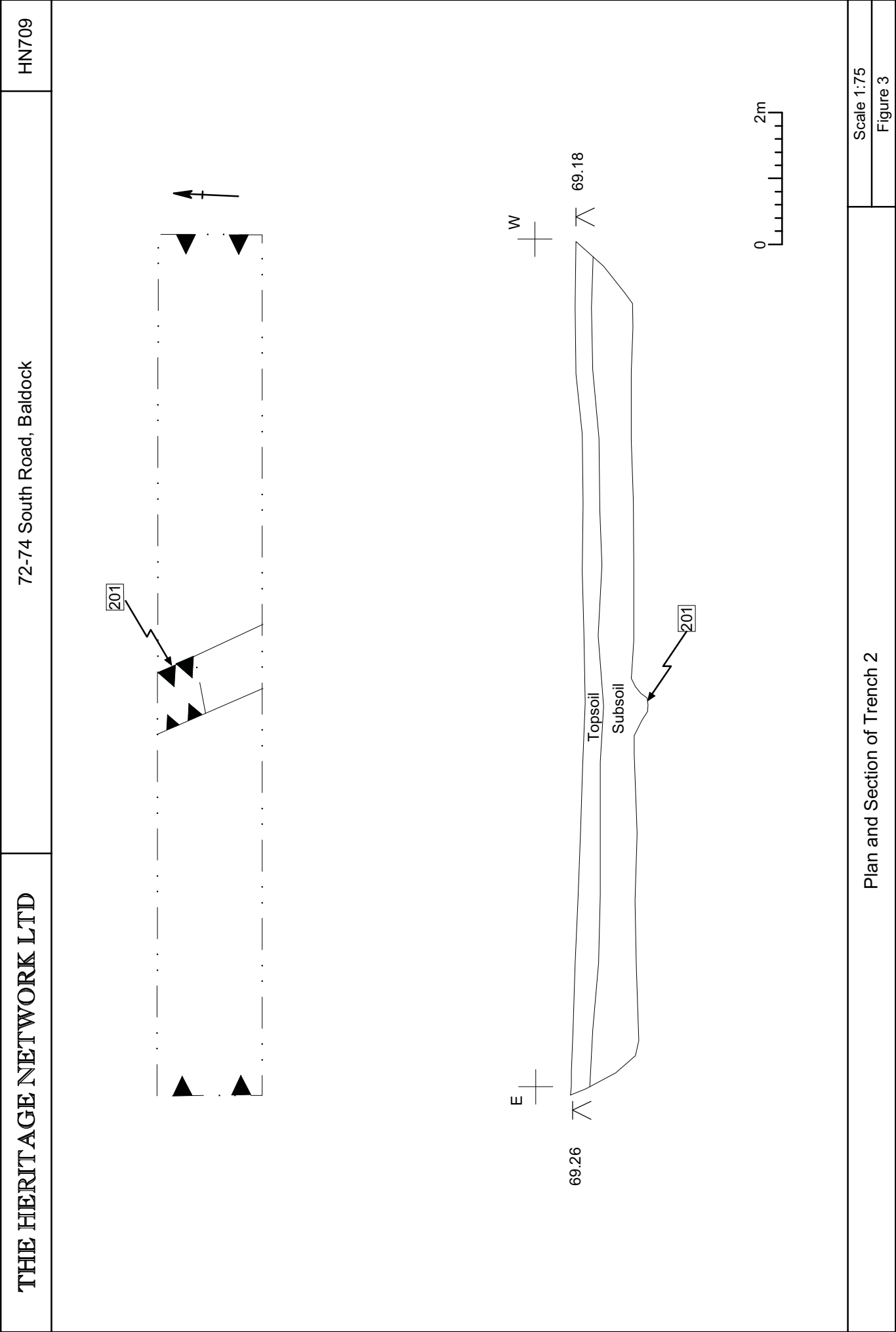
Site Location

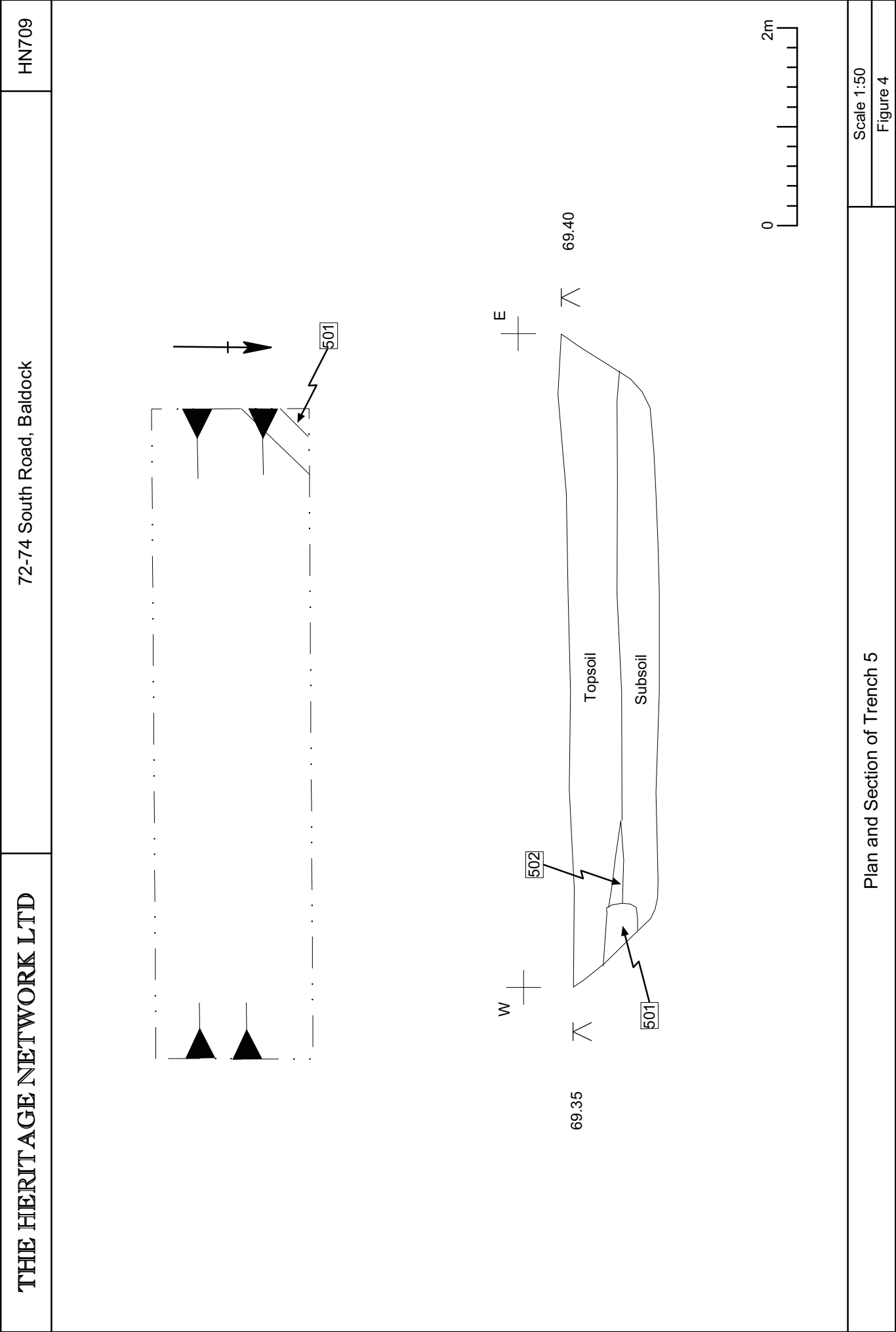
Scale 1:10000

(Reproduced from the Ordnance Survey with the permission of the controller of Her Majesty's Stationery Office, Licence no.AL100014861)

Figure 1



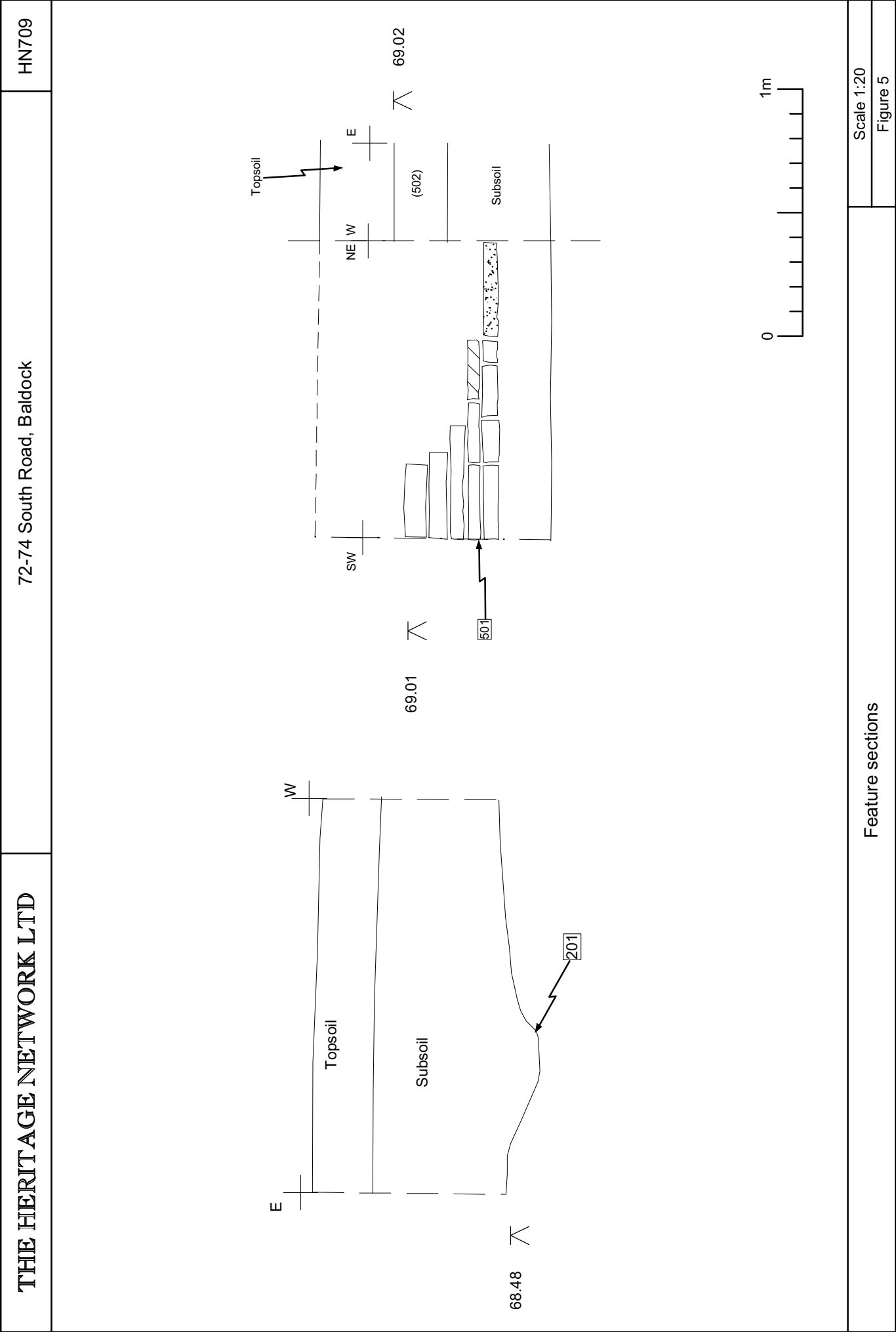




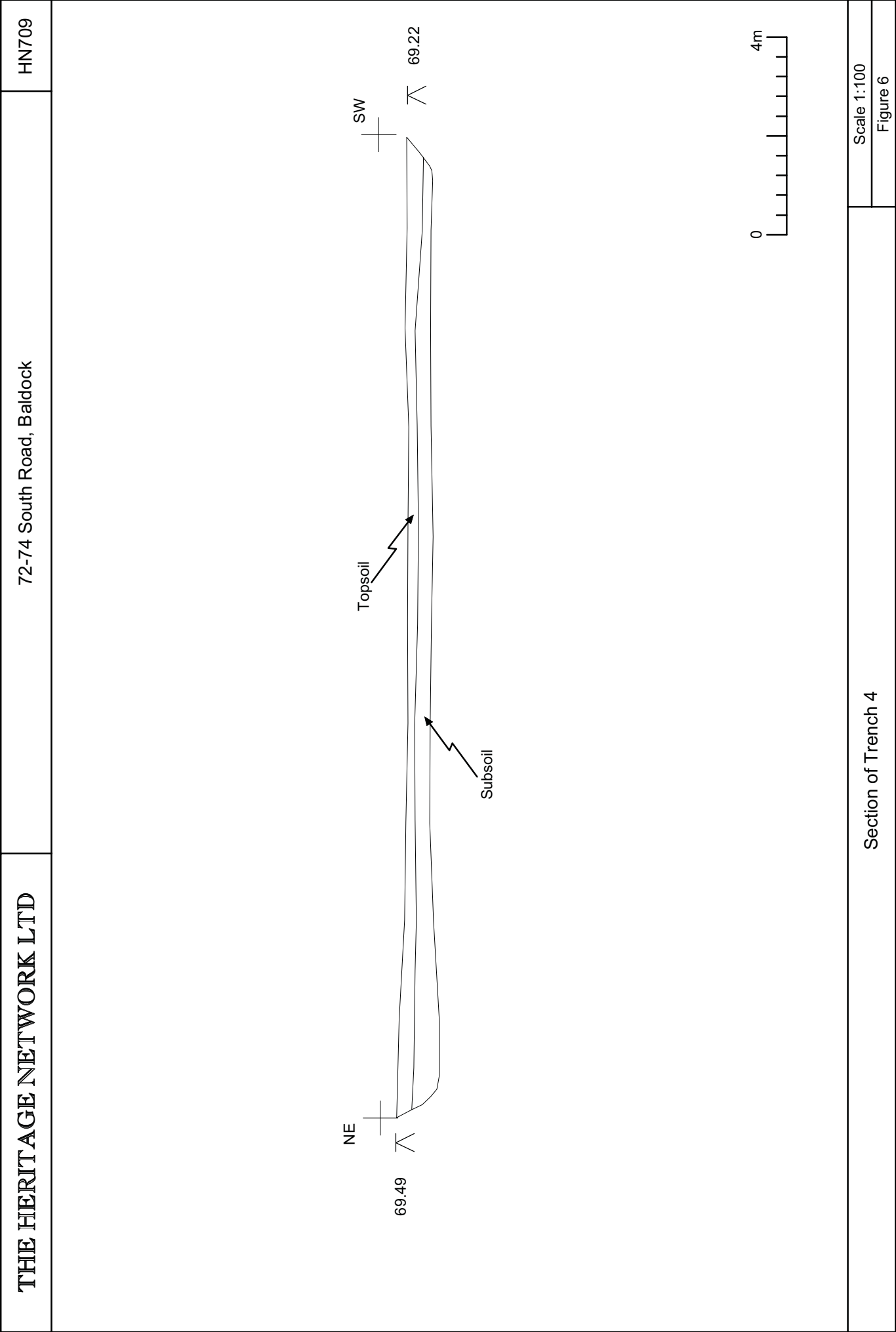
Plan and Section of Trench 5

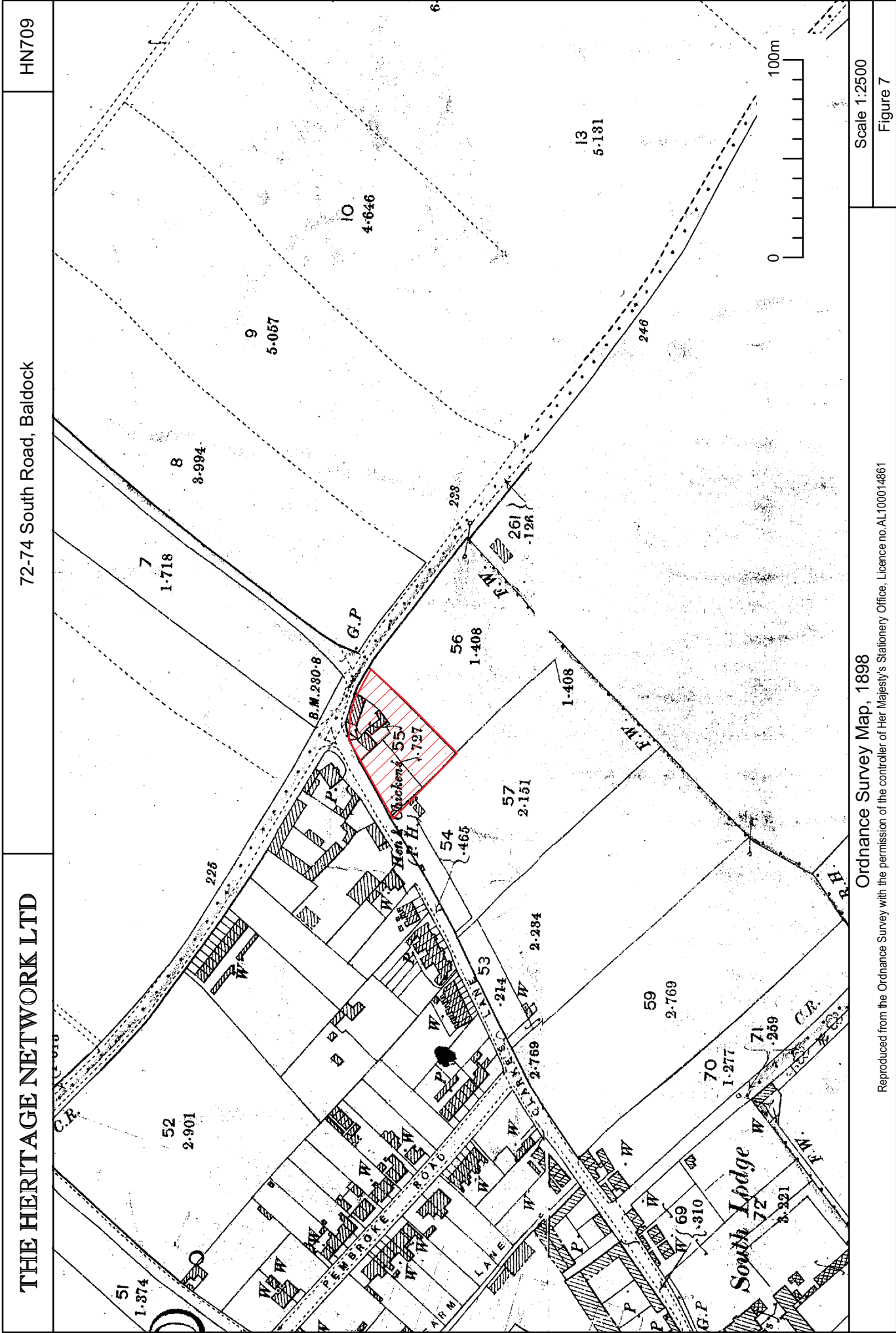
Scale 1:50

Figure 4

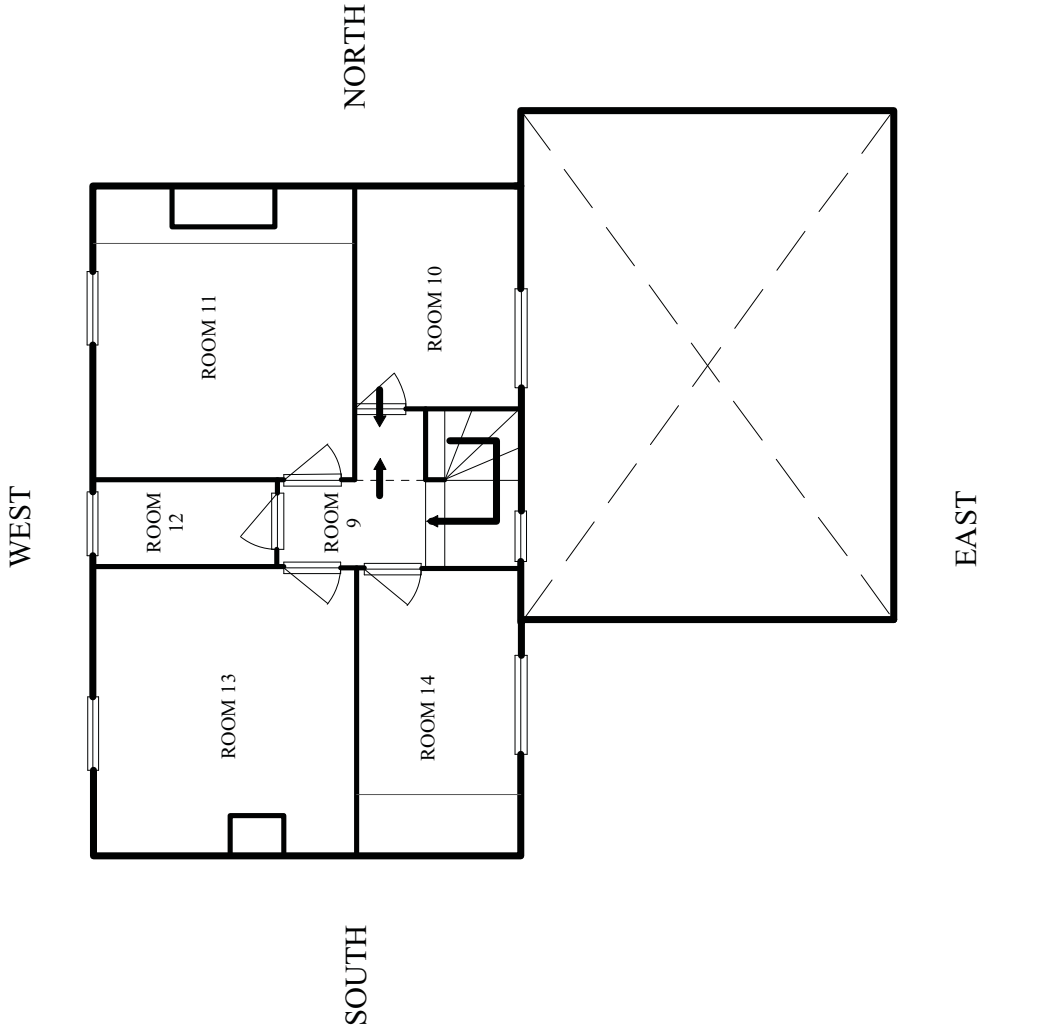


Feature sections





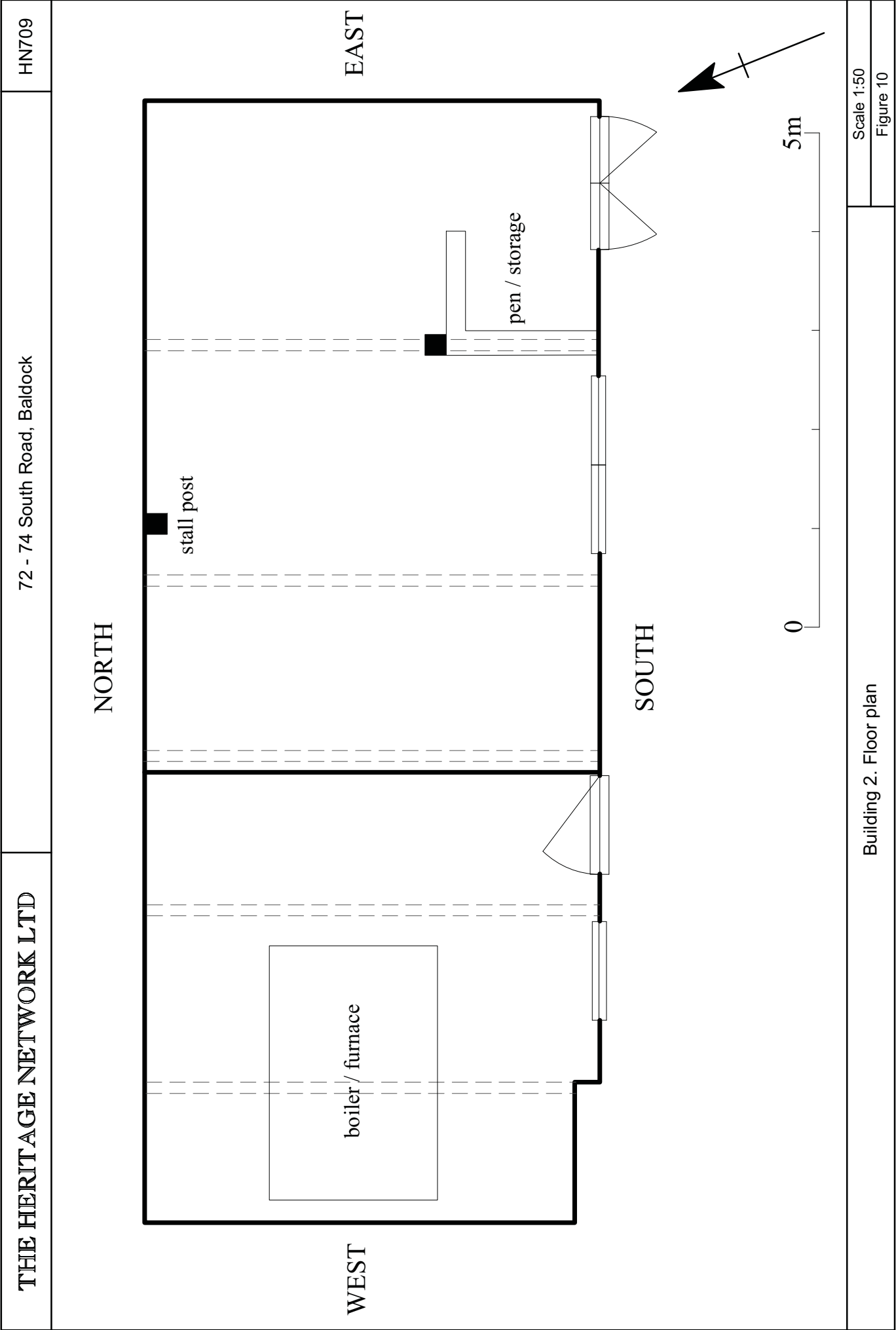




Building 1. First floor plan

Scale 1:100

Figure 9



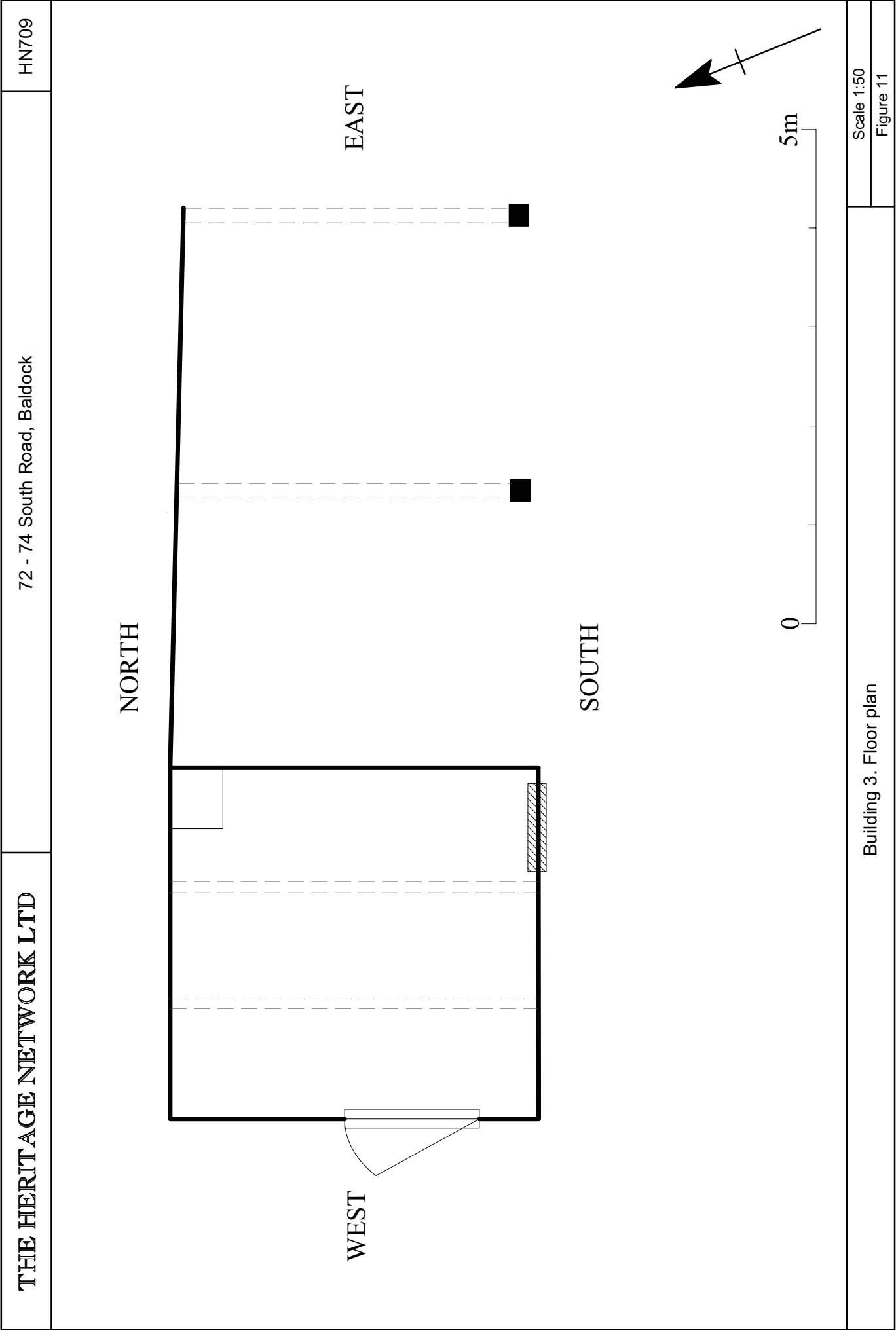




Plate 1: Trench 1, looking west



Plate 2: Trench 2, looking west



Plate 3: Trench 3, looking southwest



Plate 4: Trench 4, looking southwest



Plate 5: Trench 5, looking west



Plate 6: Sample trench section



Plate 7: Gully [201]



Plate 8: Wall [501]



Plate 9: Exterior. Building 1, west elevation



Plate 10: Exterior. Building 1, east elevation



Plate 11: Interior. Building 1, room 1, hall facing west



Plate 12: Interior. Building 1, room 5, staircase facing north



Plate 13: Interior. Building 1, room 4, kitchen, north elevation



Plate 14: Interior. Building 1, room 7, living room facing north



Plate 15: Interior. Building 1, room 8, sitting room, facing west



Plate 16: Interior. Building 1, room 11, bedroom west elevation



Plate 17: Interior. Building 1, room 9, stair balustrade



Plate 18: Interior. Building 1, room 9, hallway facing west



Plate 19: Interior. Building 1, room 11, bedroom north elevation, hearth



Plate 20: Interior. Building 1, room 13, bedroom north elevation

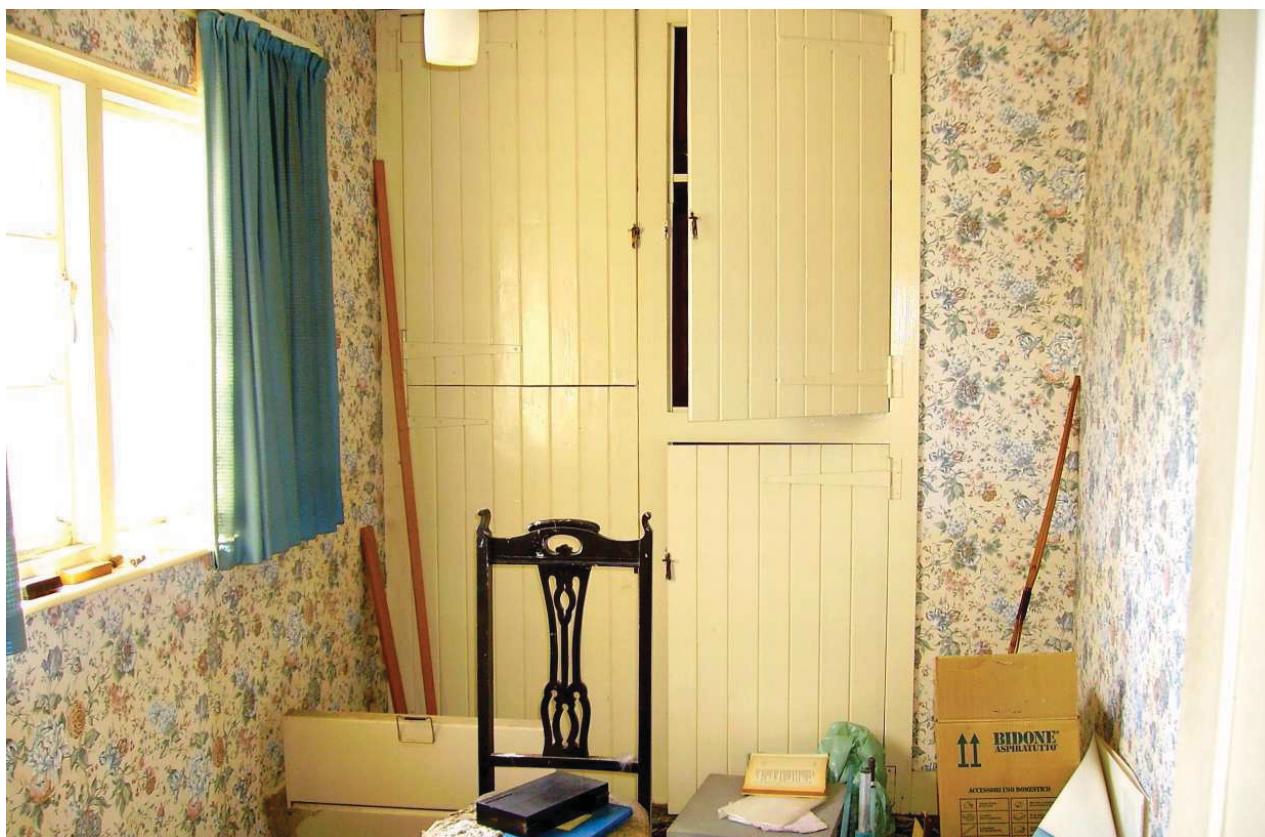


Plate 21: Interior. Building 1, room 14, bedroom east elevation



Plate 22: Interior. Building 1, example of spring latch on first floor doors



Plate 23: Exterior. Building 2, south elevation



Plate 24: Interior. Building 2, east end, west elevation



Plate 25: Interior. Building 2, east end, north elevation former stall post



Plate 26: Interior. Building 2, east end, pen / storage



Plate 27: Interior. Building 2, west end, roof structure facing west



Plate 28: Interior. Building 2, west end, boiler / furnace



Plate 29: Exterior. Building 3, south elevation



Plate 30: Interior. Building 3 (granary) roof facing east



Plate 31: Exterior. Building 4, west and south elevation



Plate 32: Exterior. Building 4, north and east elevation

Appendix 1

Digital Log

Photo number	View	Details
01	NW - SE	Building 1 & building 2
02	W - E	Building 2
03	NE - SW	Building 1, 2 & 3
04	NE - SW	Building 1, 2 & 3
05	E - W	Building 1, 2 & 3
06	NE - SW	Building 3
07	NE - SW	Building 2
08	Exterior	Building 3 north elevation
09	Exterior	Building 3 north elevation
10	Exterior	Building 4 west and north elevation
11	Exterior	Building 4 west elevation
12	Exterior	Building 4 west elevation, porch
13	Exterior	Building 4 west and south elevation
14	Exterior	Building 4 west and south elevation
15	Exterior	Building 4 south elevation
16	Exterior	Building 4 east and south elevation
17	Exterior	Building 4 east and south elevation
18	Exterior	Building 4 east elevation, south end
19	Exterior	Building 4 east and north elevation
20	Exterior	Building 4 east elevation
21	Exterior	Building 4 east and north elevation
22	Exterior	Building 4 east elevation, north end
23	Exterior	Building 4 north elevation
24	Exterior	Building 4 north elevation, west return
25	Exterior	Building 4 north elevation, internal porch & door
26	Exterior	Building 4 west elevation, porch south return
27	E - W	Building 1 & 2
28	E - W	Building 1 & 2
29	Exterior	Building 2 south and east elevation
30	Exterior	Building 2 south elevation, west end
31	Exterior	Building 2 south elevation, door at west end
32	Exterior	Building 2 south elevation, from west end to east end
33	Exterior	Building 2 south elevation, window at east end
34	Exterior	Building 2 south elevation, window and door at east end
35	Exterior	Building 2 east elevation
36	Interior	Building 2 west end brick and concrete flooring
37	Interior	Building 2 west end west elevation, boiler / furnace
38	Interior	Building 2 west end north elevation
39	Interior	Building 2 west end roof, facing north
40	Interior	Building 2 west end roof, facing west
41	Interior	Building 2 west end east elevation
42	Interior	Building 2 west end, facing east
43	Interior	Building 2 east end, north elevation
44	Interior	Building 2 east end, roof facing west
45	Interior	Building 2 east end, pen/storage area

Photo number	View	Details
46	Interior	Building 2 east end, west elevation
47	Interior	Building 2 east end, NW – SE view
48	Interior	Building 2 east end, south elevation
49	Interior	Building 2 east end, east elevation (old no. 74 front door)
50	Interior	Building 2 east end, brick floor east to west
51	Interior	Building 2 east end, NE corner
52	Interior	Building 2 east end, SE – NW view
53	Interior	Building 2 east end, east elevation
54	Interior	Building 2 east end, north elevation, post of former stall partition
55	Interior	Building 2 east end, brick floor of former stall partition
56	Interior	Building 2 east end, south elevation, pen/storage area
57	Exterior	Building 2 east elevation and boundary wall
58	Exterior	Building 2 east elevation
59	Interior	Building 2 west end west elevation, boiler / furnace
60	S - N	Building 2 & 3
61	Exterior	Building 3 (granary) south and west elevation
62	Exterior	Building 3 (granary) south and west elevation
63	Exterior	Building 3 (granary) west elevation, door
64	Exterior	Building 3 (granary) south elevation, blocked door
65	Interior	Building 3 (granary) NW corner, fireplace
66	Interior	Building 3 (granary) NW corner, fireplace
67	Interior	Building 3 (granary) NW corner, fireplace
68	Exterior	Building 3 (granary) south and east elevation
69	Exterior	Building 3 (lean-to) south elevation
70	Exterior	Building 3 (lean-to) south and east elevation
71	Exterior	Building 1 north elevation, west end
72	Exterior	Building 1 north elevation
73	Exterior	Building 3 (lean-to) north elevation from south side
74	Exterior	Building 3 (lean-to) north elevation from south side
75	Interior	Building 3 (lean-to) roof from east end
76	Interior	Building 3 (lean-to) roof from south
77	Interior	Building 3 (lean-to) north elevation from south side
78	Interior	Building 3 (granary) east and south elevation
79	Interior	Building 3 (granary) floor
80	Interior	Building 3 (granary) roof, facing east
81	Interior	Building 3 (granary) roof, facing north
82	Exterior	Building 1 west elevation
83	Exterior	Building 1 west elevation
84	Exterior	Building 1 west elevation
85	Exterior	Building 1 west and north elevation
86	Exterior	Building 1 west elevation, windows
87	Exterior	Building 1 west elevation, window and door
88	Exterior	Building 1 west elevation, windows
89	Exterior	Building 1 west elevation, door
90	Exterior	Building 1 west elevation, door
91	Exterior	Building 1 west elevation, door
92	Exterior	Building 1 west elevation, door
93	Exterior	Building 1 west elevation, door
94	Exterior	Building 1 west elevation, window

Photo number	View	Details
95	Exterior	Building 1 west elevation, window
96	Exterior	Building 1 west elevation, window
97	Exterior	Building 1 south elevation
98	Exterior	Building 1 south and east elevation
99	Exterior	Building 1 east elevation, south end
100	Exterior	Building 1 south elevation, east end, doors
101	Exterior	Building 1 east elevation
102	Exterior	Building 1 east and north elevation
103	Exterior	Building 1 east elevation, doors
104	Exterior	Building 1 north elevation
105	Exterior	Building 1 north elevation, door and window
106	Exterior	Building 1 north elevation, window
107	Exterior	Building 1 north elevation, window
108	Interior	Building 1. Ground floor, room 1, hall facing west
109	Interior	Building 1. Ground floor, room 1, hall facing west
110	Interior	Building 1. Ground floor, room 1, hall facing east
111	Interior	Building 1. Ground floor, room 2, anteroom facing north
112	Interior	Building 1. Ground floor, room 3, bathroom facing north
113	Interior	Building 1. Ground floor, room 3, bathroom, west elevation window
114	Interior	Building 1. Ground floor, room 2, anteroom, east elevation boiler cupboard
115	Interior	Building 1. Ground floor, room 1, doors to rooms 4 & 5
116	Interior	Building 1. Ground floor, room 1, kitchen door and frame
117	Interior	Building 1. Ground floor, room 4, facing north
118	Interior	Building 1. Ground floor, room 4, facing north
119	Interior	Building 1. Ground floor, room 4, west elevation
120	Interior	Building 1. Ground floor, room 4, north elevation to pantry chimney breast
121	Interior	Building 1. Ground floor, room 4, east elevation
122	Interior	Building 1. Ground floor, room 4, south elevation
123	Interior	Building 1. Ground floor, room 4, north elevation
124	Interior	Building 1. Ground floor, room 1, door to room 5 (stairs)
125	Interior	Building 1. Ground floor, room 5, staircase
126	Interior	Building 1. Ground floor, room 1, original skirting board next to staircase door
127	Interior	Building 1. Ground floor, room 1, door to room 5 (example of door handle)
128	Interior	Building 1. Ground floor, room 1, north elevation door to room 6
129	Interior	Building 1. Ground floor, room 6, cupboard under stairs
130	Interior	Building 1. Ground floor, room 7, north elevation
131	Interior	Building 1. Ground floor, room 7, NW corner coving
132	Interior	Building 1. Ground floor, room 7, NW corner dado and skirting board
133	Interior	Building 1. Ground floor, room 7, north elevation, fireplace
134	Interior	Building 1. Ground floor, room 7, east elevation
135	Interior	Building 1. Ground floor, room 7, west elevation
136	Interior	Building 1. Ground floor, room 7, south elevation
137	Interior	Building 1. Ground floor, room 8, west elevation
138	Interior	Building 1. Ground floor, room 8, east elevation
139	Interior	Building 1. Ground floor, room 8, north elevation
140	Interior	Building 1. Ground floor, room 8, north elevation
141	Interior	Building 1. Ground floor, room 8, south elevation with chimney breast
142	Interior	Building 1. Ground floor, room 8, west elevation, window
143	Interior	Building 1. Ground floor, room 1, south elevation door to room 8 (west end)

Photo number	View	Details
144	Interior	Building 1. Ground floor, room 1, south elevation door frame to room 8 (west end)
145	Interior	Building 1. Ground floor, room 1, south elevation door frame & skirting board outside rm 8
146	Interior	Building 1. Ground floor, room 1, south elevation door to room 8 (east end)
147	Interior	Building 1. Ground floor, room 1, south elevation door frame to room 8 (east end)
148	Interior	Building 1. Ground floor, room 1, south elevation door frame to room 8 (east end)
149	Interior	Building 1. Ground floor, room 1, west elevation door
150	Interior	Building 1. First floor, room 9, staircase landing facing north
151	Interior	Building 1. First floor, room 9, hallway facing east
152	Interior	Building 1. First floor, room 9, staircase landing facing north
153	Interior	Building 1. Ground floor, room 5, staircase from first floor facing west
154	Interior	Building 1. Ground floor, room 5, staircase from first floor facing west
155	Interior	Building 1. First floor, room 9, staircase landing facing north over step to room 10
156	Interior	Building 1. First floor, room 12, west elevation
157	Interior	Building 1. First floor, room 9, staircase balustrade
158	Interior	Building 1. First floor, room 9, staircase newel post
159	Interior	Building 1. First floor, room 9, staircase landing facing east, window
160	Interior	Building 1. First floor, room 9, hallway facing west
161	Interior	Building 1. First floor, room 9, hallway, door to room 13
162	Interior	Building 1. First floor, room 9, hallway, door to room 11
163	Interior	Building 1. First floor, room 9, hallway, door to room 11, doorframe
164	Interior	Building 1. First floor, room 11, west elevation
165	Interior	Building 1. First floor, room 11, south elevation
166	Interior	Building 1. First floor, room 11, east elevation
167	Interior	Building 1. First floor, room 11, north elevation with cupboards
168	Interior	Building 1. First floor, room 11, west elevation external brick hearth to chimney breast
169	Interior	Building 1. First floor, room 11, west elevation, window
170	Interior	Building 1. First floor, room 11, south elevation, door
171	Interior	Building 1. First floor, room 10, north and east elevation
172	Interior	Building 1. First floor, room 10, north and east elevation
173	Interior	Building 1. First floor, room 10, south elevation
174	Interior	Building 1. First floor, room 10, south elevation
175	Interior	Building 1. First floor, room 10, north elevation, window
176	Interior	Building 1. First floor, room 9, door to room 14
177	Interior	Building 1. First floor, room 9, doorframe to room 14
178	Interior	Building 1. First floor, room 14, east elevation
179	Interior	Building 1. First floor, room 14, south elevation
180	Interior	Building 1. First floor, room 14, south elevation
181	Interior	Building 1. First floor, room 14, south elevation, window
182	Interior	Building 1. First floor, room 14, south elevation, cupboard door
183	Interior	Building 1. First floor, room 14, north elevation
184	Interior	Building 1. First floor, room 14, north elevation
185	Interior	Building 1. First floor, room 9, door to room 13
186	Interior	Building 1. First floor, room 9, doorframe to room 13
187	Interior	Building 1. First floor, room 9, doorframe to room 13 & room 12
188	Interior	Building 1. First floor, room 13, west elevation
189	Interior	Building 1. First floor, room 13, north elevation
190	Interior	Building 1. First floor, room 13, east elevation
191	Interior	Building 1. First floor, room 13, south elevation

Photo number	View	Details
192	Interior	Building 1. First floor, room 13, west elevation, window
193	Interior	Building 1. First floor, room 13, west elevation, door spring latch (example)
194	Exterior	Building 1 north elevation and building 2 west elevation
195	Exterior	Building 2 west elevation



01



02



03



04



05



06



07



08



09



10



11



12



13



14



15



16



17



18



19



20



21



22



23



24



25



26



27



28



29



30



31



32



33



34



35



36



37



38



39



40



41



42



43



44



45



46



47



48



49



50



51



52



53



54



55



56



57



58



59



60



61



62



63



64



65



66



67



68



69



70



71



72



73



74



75



76



77



78



79



80



81



82



83



84



85



86



87



88



89



90



91



92



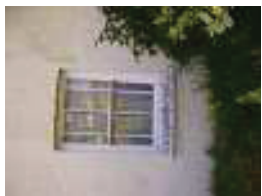
93



94



95



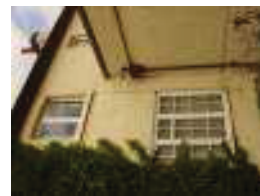
96



97



98



99



100



101



102



103



104



105



106



107



108



109



110



111



112



113



114



115



116



117



118



119



120



121



122



123



124



125



126



127



128



129



130



131



132



133



134



135



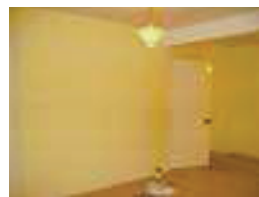
136



137



138



139



140



141



142



143



144



145



146



147



148



149



150



151



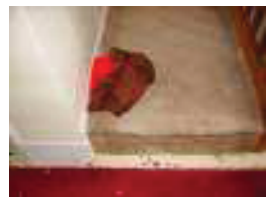
152



153



154



155



156



157



158



159



160



161



162



163



164



165



166



167



168



169



170



171



172



173



174



175



176



177



178



179



180



181



182



183



184



185



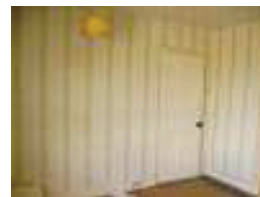
186



187



188



189



190



191



192



193



194



195