

HERITAGE NETWORK



**ETONBURY FARM BUND**  
**Arlesey, Beds.**

(HN362)

*Archaeological Monitoring Report*



# THE HERITAGE NETWORK LTD

*Registered with the Institute of Field Archaeologists as an Archaeological Organisation*

Archaeological Director: David Hillelson, BA MIFA

## ETONBURY FARM BUND Stotfold Road, Arlesey, Beds.

HN362

### *Archaeological Assessment Report*

*Prepared on behalf of David Beatham Esq*

by

Geoff Saunders, BA

Report No.179

*January 2003*

© The Heritage Network Ltd

12 ROYSTON ROAD, BALDOCK, HERTS. SG7 6NT  
TELEPHONE: (01462) 893288 FAX: (01462) 893562

## Contents

	Summary .....	Page i
Section 1	Introduction .....	Page 1
Section 2	Fieldwork .....	Page 2
Section 3	Artefacts and ecofacts .....	Page 5
Section 4	Discussion .....	Page 8
Section 5	Bibliography .....	Page 10
Section 6	Schedule of site visits .....	Page 10
Section 7	Illustrations .....	following Page 11
Appendix	Table of features .....	Page 12

*The cover illustration shows the surviving remains of Inhumation [13]*

## Acknowledgements

The fieldwork for the present project was undertaken by Martin Lightfoot, John Bolderson, Paul Palmer, David Kaye and Geoff Saunders under the supervision of David Hillelson. Illustrations were prepared by Martin Lightfoot and Karin Semmelmann. The report was edited by David Hillelson.

The Heritage Network would like to express its thanks to David Beatham Esq, Etonbury Farm; and Martin Oake, County Archaeology Officer, Bedfordshire County Council, for their co-operation and assistance in the execution of this project.

## Summary

<b>Site name and address:</b>	Etonbury Farm, Stotfold Road, Arlesey, Bedfordshire		
<b>County:</b>	Bedfordshire	<b>District:</b>	Mid Beds
<b>Village/town:</b>	Church End, Arlesey	<b>Parish:</b>	Arlesey
<b>Planning reference:</b>	CM/2002/4; BR/2002/0172	<b>NGR (to 8 figures):</b>	TL 1954 3791
<b>Client name and address:</b>	David Beatham Esq, Etonbury Farm, Stotfold Road, Arlesey, Bedfordshire		
<b>Nature of application:</b>	Landscaping	<b>Previous land use:</b>	Agriculture
<b>Size of application area:</b>	c.12200m <sup>2</sup>	<b>Size of area investigated:</b>	c.12200m <sup>2</sup>
<b>Site Code:</b>	HN362	<b>Other reference:</b>	n/a
<b>Organisation:</b>	Heritage Network	<b>Site Director:</b>	David Hillelson
<b>Type of work:</b>	Monitoring & recording	<b>Finds location/Museum:</b>	Bedford Museum
<b>Start of work</b>	25 April 2002	<b>Finish of work</b>	24 May 2002
<b>Related SMR Nos.:</b>	n/a	<b>Periods represented:</b>	LBA - RB
<b>Previous summaries /reports:</b>	n/a		

**Synopsis:** As the result of a condition placed on the planning permissions for the creation of an earth bund, and a new access road at Etonbury Farm, Stotfold Road, Arlesey, Beds, the Heritage Network was commissioned by David Beatham Esq to undertake a programme of archaeological monitoring of the ground clearance works on the site as defined by the County Archaeological Officer at Bedfordshire County Council.

The ground level across the site was reduced to the first significant archaeological horizon, to allow the identification of archaeological features and deposits. An extensive archaeological landscape was revealed extending outside the areas of investigation in all directions. The eastern half of the site included a series of large linear features principally on a north to south alignment. These appear to represent field boundaries on the edge of an occupation site. The middle and western half of the site contained soil marks indicating a variety of cut features including probable pits, postholes and possible graves. These features are indicative of buildings and occupation on the site. The surface finds suggest a date range from the late Bronze Age/early Iron Age through to the Romano-British period.

# 1 Introduction

**1.1** This report has been prepared on behalf of David Beatham Esq, as part of a programme of archaeological works on the site of groundworks for the construction of a soil bund and access road at Etonbury Farm, Stotfold Road, Arlesey, Beds. The planning permissions for the development (refs. CM/2002/4 and BR/2002/0172), granted by the Bedfordshire County Council (BCC) and Mid Beds District Council (MBDC) respectively, were subject to archaeological conditions which have been met by following the provision set out in a *Brief for a Programme of Archaeological Observation, Recording, Analysis and Publication* prepared by the County Archaeology Officer (CAO) at BCC (ref. MO 07/11/01). The work was carried out in accordance with the methodology contained in the Heritage Network's approved *Project Design* dated April 2002.

**1.2** The site is located on the north side of the A507 Arlesey Bypass, approximately 200m north of Church End, Arlesey, and is centred on NGR 51945 23791 (see Figure 1). The development proposed the creation of a soil bund to provide screening for the property from the bypass, and the construction of the southern half of an access road intended for a proposed new dwelling. The site of the bund was previously in agricultural use and is bounded by the A507 to the south, the existing access to Etonbury Farm to the west, Public Footpath 4A to the east, and the remainder of the existing field to the north.

**1.3** The site lies to the south of Etonbury (HER 395), which originally consisted of a series of earthworks and is thought to represent the remains of a medieval manorial site recorded in a document of 1566 as Etonbury Manor. It has produced quantities of medieval pottery as well as some Roman material. The site has been damaged by a number of developments starting with the construction of the railway in the 19th century.

**1.4** The county Sites and Monuments Record includes a number of other archaeological sites and findspots in the vicinity of the development site, including cropmarks (HER 1760) which may represent the remains of a deserted medieval settlement; medieval ridge and furrow (HER 1789); finds of prehistoric flint artefacts (HER 16095 and 16096); and finds of Iron Age, medieval and Post-medieval pottery (HER 16095).

**1.5** In view of the known historical and archaeological information concerning the site and its immediate vicinity there was considered by the planning authorities to be a reasonable chance that features and artefacts of all periods would be encountered in the course of the groundworks for the development. Potential features, deposits and artefacts which might elucidate the origins and development of the site leading up to and during the medieval period were considered to be of particular interest.

**1.6** The present report represents an assessment of the results of the fieldwork, in accordance with the provisions set out in *Management of Archaeological Projects* (English Heritage, 2nd edition, 1991), and defines the nature and level of post-excavation research required, to allow publication in an appropriate format.

## 2 Fieldwork

### ***TOPOGRAPHY AND GEOLOGY***

**2.1** The site is located to the east of the river Hiz, to the south of the river Ivel, and to the north of the Pix brook. The ground slopes down slightly across the site from east to west varying between 40.53mOD in the southwest corner to 41.78mOD towards the eastern limit of the site.

**2.2** The natural geology of the site consists of friable orange brown sandy gravel which is beneath a buried soil consisting of approximately 0.4m of friable dark brown silty clay. This was sealed by a 0.5m deep dump deposit of hard mid grey clay, which is likely to originate from the construction of the lakes to the north of the site.

### ***METHODOLOGY***

**2.3** The ground level across the site was reduced by a depth of approximately 0.9m using a 360° tracked excavator fitted with a toothless ditching bucket, under direct archaeological supervision. The spoil from the ground reduction was inspected for archaeological artefacts.

**2.4** Following the completion of the ground reduction a site survey was undertaken using an EDM to record recording all the archaeological features revealed.

**2.5** All work was carried out in accordance with the detailed method statement contained in the Heritage Network's approved *Project Design*, and followed the relevant sections of the Heritage Network's *Operations Manual*.

### ***RESULTS***

**2.6** The initial reduction of ground level revealed a significant number of archaeological features including 37 linears, 168 possible pits, 106 possible postholes, 8 beam slots, a rectilinear enclosure, a ring ditch and a gravecut (see Figures 2 - 5). Due to the nature of the development and the density of these features, it was decided that the site should be preserved *in situ*. It was protected by a geotextile membrane covered with a layer of gravel ballast not less than 300mm in depth, over which the bund was built up.

**2.7** During machining a single grave [15], containing human remains, was disturbed (see Figure 8). A substantial portion of the body had been truncated by earlier ploughing on the site, leaving only the pelvis and legs in place. A Home Office licence was obtained and the remains were fully recorded and removed, in accordance with its provisions. The coroner's officer for Bedfordshire was also informed.

**2.8** Three features were excavated during the course of machining, one of these was the inhumation, one was a gully [05] and the other was a wide ditch [07] (see Figure 6). Finds were recovered from the surface of other features to provide dating evidence for the site.

2.9 A full table of features is located in Appendix 1. The recorded features and contexts are summarised below:

Context/ Feature	Type	Description and Interpretation	Max Th. (m)	Level (mOD)
1	Layer	Hard mid grey clay, with occasional gravel inclusions	0.5	
2	Layer	Friable dark brown silty clay, with occasional sand inclusions.	0.4	
3	Layer	Friable orange brown sandy gravel, natural subsoil.		
4	Fill	Friable mid brown silty sand, with occasional gravel and small pebbles. Primary fill of [05]	0.34	
5	Cut	Linear cut feature, with shallow sides and a rounded base.	0.34	
6	Fill	Friable mid brown silty sand, with occasional gravel and small pebbles. Primary fill of [07].	0.46	
7	Cut	Linear cut feature, with shallow sides and a flat base.	0.46	
8	Feature	Linear cut feature on a north-south alignment.		
10	Feature	Subcircular cut feature, small pit.		
11	Feature	Linear cut feature on a northeast-southwest alignment.		
13	Inhumation	Partial remains of adult male.		
14	Fill	Friable dark brown sandy silt, with frequent small gravel stones. Primary fill of grave cut [15].		
15	Cut	Rectangular cut feature with flat base. Grave cut of inhumation [13].		40.08
17	Feature	Subcircular cut feature, pit.		
20	Feature	Linear cut feature, enclosure ditch.		40.59
21	Feature	Subcircular cut feature, small pit or posthole.		
25	Feature	Subcircular cut feature, pit.		
26	Feature	Subcircular cut feature, posthole.		
27	Feature	Subcircular cut feature, posthole.		
28	Feature	Subcircular cut feature, posthole/pit.		
29	Feature	Subcircular cut feature, posthole.		
30	Feature	Linear cut feature, possible ditch continuing beneath baulk.		
31	Feature	Subcircular cut feature, posthole.		
32	Feature	Linear cut feature on a northeast-southwest alignment.		40.02

**2.11** Three areas, located so as to have minimal impact on the identified archaeology, were designated for the extraction of gravel to act as ballast sealing the geotextile membrane (see Figure 6). In these areas sections were hand excavated through archaeological features prior to their removal by machine. The recorded contexts from this stage of the fieldwork are summarised below:

Context/ Feature	Type	Description and Interpretation	Max Th. (m)	Level (mOD)
1001	Cut	Linear cut feature on a north south alignment.		40.86
1002	Fill	Compact, dark grey, sandy silt, with moderate small gravel inclusions. Fill of [1001].	0.12	
1003	Cut	Linear cut feature on a south west to north east alignment.		40.83
1004	Fill	Soft, olive brown, sandy silt, with frequent small angular stones. Fill of [1003].	0.32	
1005	Cut	Linear cut feature on a south west to north east alignment.		40.77
1006	Fill	Soft, olive brown, sandy silt, with frequent small angular stones and occasional small roots. Fill of [1005]	0.49	
1007	Cut	Sub-circular cut feature with shallow, slightly concave sides and a rounded base.		40.95
1008	Fill	Soft, olive brown, sandy silt, with frequent small sub-angular stones. Fill of [1007].	0.1	
1009	Cut	Sub-circular cut feature with very shallow sides and a flat base.		40.78
1010	Fill	Soft, dark olive grey, slightly sandy silt, with frequent small sub-angular stones. Fill of [1009].	0.04	

### 3 Artefacts and Ecofacts

#### *CONCORDANCE OF FINDS*

Feature/Context	Pottery		A.bone		Shell		Flint		Comments
	Wt	No	Wt	No	Wt	No	Wt	No	
4	10	1	3	2					Romano-British
5	5	1							Romano-British
6			75	2					
8	255	12							Early Romano-British
10	85	5	5	1					Late BA-Middle IA
11	10	1							Early Romano-British
17	15	2							Early Romano-British
20	3	1							Late BA-Middle IA
21	15	2							Middle - late IA
25	15	1							18th/19thC
26	235	11							Late BA/Early IA
27	5	1							Romano-British
28	10	3							Early Romano-British
29	5	1							Late BA-Middle IA
30	40	1							Early Romano-British
31	35	2							Late BA-Middle IA
32	50	1							Early Romano-British
1002			145	1					
1004			3	1	1	1			
1006			15	3	1	1	3	1	
u/s	235	19							
Totals	1028	65	246	10	2	2	3	1	

#### *MATERIAL ASSESSMENTS*

##### *Pottery*

**3.1** The assemblage consists of 65 sherds of pottery, weighing 1028g, which included unstratified material and sherds recovered from 16 stratified contexts during the investigation.

**3.2** A total of 26 sherds of late Bronze Age to late Iron Age pottery, weighing 398g, represents 40.0% of the total assemblage by number and 39.2% by weight. The sherds are all flint-tempered, some also have additional tempering of sand, quartz, shell, or grog. Features [10] and [26] contained unabraded sherds of flint-tempered wares which are therefore



probably in their primary place of deposition. Features [20], [21] and [29] contained smaller abraded sherds which are likely to be residual in later contexts.

**3.3** A total of 4 sherds of Late pre-Roman Iron Age pottery, weighing 145g, represents 7.40% of the total assemblage by number and 16.8% by weight. The four sherds were all unstratified and represent over half of a single base. The base has a soft, soapy fabric, containing large lumps of grog whose inclusions are visible to the naked eye, including shell-tempered ware fragments.

**3.4** A total of 34 sherds of early Romano-British pottery, weighing 470g, represent 52.3% of the total assemblage by number and 45.7% by weight. The assemblage comprised 25 shell-tempered sherds, 2 shell- and grog-tempered sherds and 7 sand tempered sherds. Contexts [4] and [5] and features [11], [17], [27] and [28] contained shell tempered wares only. Feature [8] contained a single sand tempered base and 11 sherds of shell-tempered pottery from 1 vessel.

### ***Discussion***

**3.5** Although pottery was recovered from only a limited number of features, its dating suggests occupation on the present site from the Late Bronze Age/Early Iron Age through to the early Roman period. The absence of pottery later in date than the early - mid second century AD, suggests that the settlement had declined by then.

**3.6** The assemblage appears to be domestic and not high status in nature, although it is noted that the material has chiefly been derived from the surface of features. Grog-tempered 'Belgic' pottery is notable by its absence, although this is the major fabric group from the region in this period. The Roman pottery is from local and regional sources, predominantly the kiln site at Harrold, approximately 21 miles to the north-west.

**3.7** In view of its limited nature, no further work is proposed on this assemblage.

### ***Animal Bone***

**3.8** The assemblage consists of a total of 10 fragments of animal bone weighing 246g. The bones are heavily abraded and as such show little evidence of butchery. The predominant species represented is bovine.

**3.9** In view of its limited nature, this assemblage does not give a representative sample of animal bones from the site and no further work on it is proposed.

### ***Shell***

**3.10** The assemblage consists of 2 fragments of snail shell weighing 2g.

**3.11** In view of its limited nature, no further work is proposed on this assemblage.

**Flint**

**3.12** The assemblage consists of a single flint tool weighing 3g. The flint has evidence of retouch along one side and appears to be a scraper as opposed to a waste flake.

**3.13** In view of its limited nature, no further work is proposed on this assemblage.

**Human Bone**

**3.14** The single inhumation identified consisted of the partial remains of an adult male truncated above the pelvis by later activity. The burial was on an east to west alignment and was located in an enclosure, the ditch of which contained abraded pottery dating from the Late Bronze Age to Middle Iron Age. Only the pelvis, right and left femurs, right tibia, a single right metacarpal and fragments of probable foot bones were recovered.

**3.15** The grave of a single individual is not sufficient to provide any meaningful statistical data for the local contemporary population, and the state of preservation of the remains provides insufficient evidence of palaeopathology. On this basis, no further work is proposed on the human bone.

## 4 Discussion

**4.1** The stripping of this site has revealed an extensive archaeological landscape that extended in all directions beyond the area of the current development (see Figure 2). Pottery recovered from the site suggests it was occupied from the Late Bronze Age through to the early Roman period.

**4.2** The distribution of features suggests the settlement was focused on the western part the site. This area had the highest density of pits and postholes which are indicative of domestic activity and occupation. The eastern part of the site had the highest density of linear features which probably represent field boundaries and land divisions on the edge of the settlement.

**4.3** An inhumation [13] was recovered from inside an enclosure formed by a rectilinear ditch [20]. It is possible that this enclosure may contain further burials or cremations. Pottery recovered from the surface of linear [20] suggests that it dates from the Late Bronze Age to Middle Iron Age, although the pottery was abraded and may be residual in a later feature.

**4.4** The features excavated in the areas which were cleared to allow small-scale gravel extraction, were located in the eastern part of the site. The finds assemblage from these features was very small. No pottery was recovered, making dating difficult although the limited nature of the finds assemblage suggests that the eastern part of the site lies on the edge of the settlement.

**4.5** The pottery assemblage from elsewhere on the site is primarily domestic in nature with no high status wares, suggesting that the occupation on the site may represent a small rural farmstead. No pottery later than the early-mid 2nd century AD was recovered suggesting that by this period the settlement was in decline.

**4.6** Despite the proximity of the site to Etonbury (HER 395) which is thought to represent the remains of a medieval manorial site recorded in a document of 1566 as Etonbury Manor, no archaeological features or artefacts dating to the Saxon or medieval periods were recovered during the current investigation.

### *Conclusions*

**4.7** Because the majority of the site has been preserved *in situ* with only limited excavation being undertaken, the conclusions to be drawn from the current investigation are limited.

**4.8** Nevertheless, the archaeological investigation of the site has demonstrated evidence of domestic activity on the site from the Late Bronze Age through to the early Roman period. In addition, the presence of a high status inhumation, and a number of other features which could be graves, suggests that part of the site may have been used as a cemetery during this period. The artefact evidence suggests that activity on the site declined from the early to mid

second century AD, and may have relocated to the north after this time. There was no direct evidence of medieval or Saxon activity on the site.

**4.9** Without excavation of the identified features, it is not possible to fully understand the nature of the site. In considering those conclusions which have been drawn, it is important to note that the majority of the finds assemblage is made up of sherds recovered from the exposed surface of features, rather than from well stratified deposits, and the possibility of intrusion or contamination cannot be ruled out.

### ***Confidence Rating***

**4.10** Within the limitations highlighted in the discussion, above, the field conditions were generally acceptable for the identification of potential features and deposits, and for their investigation or preservation in situ. On this basis, there are no circumstances which would lead to a confidence rating for the work which was less than High.

### ***Statement of Potential***

**4.11** The present study has provided evidence of extensive activity across the site and extending into adjacent areas. Because preservation of the archaeology in situ was the principal strategy for the site, only limited excavation took place. For this reason, the assessment of the results of the fieldwork has demonstrated little potential for further research. The stratigraphic evidence is straightforward, and the artefact and ecofact assemblages recovered are limited in their range, quantity and quality. No further work is proposed on these.

**4.12** In the longer term, however, the results have the potential to contribute to further research on the origins and development of settlement in the vicinity of Etonbury. Should the opportunity arise in the future, further survey and excavation of areas adjacent to the present study area should be considered to be highly desirable. It is unfortunate that the construction of the Arlesey bypass did not afford the opportunity to investigate the southern extent of the site.

**4.13** It is proposed that the results of the present study should be edited into a short article which sets them in their local archaeological context, and submitted to South Midlands Archaeology for publication.

## 5 Bibliography

Hillelson, D., 2002, *Etonbury Farm Bund, Stotfold Road, Arlesey, Beds: Project Design*. Heritage Network

Oake, M., 2001, *Brief for a Programme of Archaeological Observation, Recording, Analysis and Publication*. BCC

## 6 Schedule of Site Visits

Date	Personnel	Hours	Comments
25/04/02	ML	9	Topsoil stripping
26/04/02	ML	8	Topsoil stripping, preliminary recording
	JB	8	
29/04/02	ML	7	Topsoil stripping, preliminary recording
	JB	7	
30/04/02	ML	3	Topsoil stripping
01/05/02	ML	7	Site survey
	JB	7	
02/05/02	ML	7	Site survey and recording
	JB	7	
03/05/02	ML	5	Site survey and recording
	JB	5	
	CT	2	Supervisory visit
07/05/02	DJH	3	Meeting with D Beatham and Martin Oake
10/05/02	ML	6	Surveyed access road
	JB	6	
23/05/02	DK	9	Recording features in advance of gravel quarrying
	PP	9	
	DJH	3	Investigate unauthorised machining
24/05/02	DK	5	Recording features in advance of gravel quarrying
	GIS	5	

# 7

## Illustrations

Figure 1 ..... Site location  
Figure 2 ..... Site layout  
Figure 3 ..... Identified features and deposits - access road  
Figure 4 ..... Identified features and deposits - west end  
Figure 5 ..... Identified features and deposits - east end  
Figure 6 ..... Excavated features and areas used for gravel extraction  
Figure 7 ..... Excavated features: plans and sections  
Figure 8 ..... Grave [15]

## Appendix

**TABLE OF FEATURES**

Context/Feature	Type	Width (m)	Length (m)	Diameter
5	Ditch Section	1.23	0.46	-
7	Ditch Section	1.28	0.44	-
8	Ditch Group	1.81	51.6	-
9	Ditch	0.81	7.36	-
10	Pit	-	-	0.47
11	Ditch	2.1	12.04	-
12	Ditch	2.07	5.35	-
15	Grave Cut	0.49	1.6	-
16	Ditch	0.79	5.22	-
17	Pit	-	-	0.77
18	Pit	-	-	0.36
19	Post Hole	-	-	0.3
20	Ditch	2.52	45.46	-
21	Pit	-	-	0.4
22	Post Hole	-	-	0.18
23	Post Hole	-	-	0.23
24	Post Hole	-	-	0.28
25	Pit	-	-	1
26	Pit	-	-	0.38
27	Pit	-	-	0.38
28	Pit	-	-	1.01
29	Post Hole	-	-	0.3
30	Ditch	3.39	5.1	-
31	Pit	-	-	0.39
32	Ditch	0.73	11.13	-
33	Post Hole	-	-	0.26
34	Pit	-	-	0.61
35	Ditch	0.83	5.91	-
36	Ditch	0.82	5.42	-
37	Pit	-	-	0.35
38	Pit	-	-	0.51
39	Ditch	2.46	4.93	-
40	Pit	-	-	0.77
41	Post Hole	-	-	0.28
42	Post Hole	-	-	0.3
43	Post Hole	-	-	0.3

Context/Feature	Type	Width (m)	Length (m)	Diameter
44	Pit	-	-	0.4
45	Ditch	1.35	9.1	-
46	Pit	-	-	0.38
47	Pit	-	-	0.61
48	Pit	-	-	0.59
49	Pit	-	-	0.4
50	Pit	-	-	0.4
51	Post Hole	-	-	0.3
52	Pit	-	-	0.78
53	Pit	-	-	0.59
54	Post Hole	-	-	0.2
55	Pit	-	-	0.6
56	Post Hole	-	-	0.2
57	Post Hole	-	-	0.3
58	Ditch	1.49	3.64	-
59	Ditch	0.62	7.21	-
60	Ditch	0.47	3.53	-
61	Post Hole	-	-	0.29
62	Ditch	2.11	9.27	-
63	Post Hole	-	-	0.29
64	Post Hole	-	-	0.19
65	Post Hole	-	-	0.2
66	Post Hole	-	-	0.2
67	Post Hole	-	-	0.2
68	Post Hole	-	-	0.3
69	Post Hole	-	-	0.29
70	Pit	-	-	0.5
71	Pit	-	-	0.58
72	Post Hole	-	-	0.3
73	Post Hole	-	-	0.3
74	Post Hole	-	-	0.3
75	Post Hole	-	-	0.3
76	Ditch	2.12	41.39	-
77	Post Hole	-	-	0.3
78	Post Hole	-	-	0.29
79	Pit	-	-	1
80	Pit	-	-	0.7
81	Pit	-	-	0.5
82	Pit	-	-	0.69
83	Pit	-	-	0.6



Context/Feature	Type	Width (m)	Length (m)	Diameter
84	Ditch	1.28	20.7	-
85	Pit	-	-	0.5
86	Post Hole	-	-	0.28
87	Pit	-	-	0.39
88	Pit	-	-	0.7
89	Pit	-	-	1.8
90	Pit	-	-	0.6
91	Post Hole	-	-	0.29
92	Pit	-	-	0.4
93	Post Hole	-	-	0.2
94	Post Hole	-	-	0.2
95	Post Hole	-	-	0.3
96	Post Hole	-	-	0.3
97	Pit	-	-	0.51
98	Post Hole	-	-	0.3
99	Pit	-	-	0.81
100	Post Hole	-	-	0.3
101	Post Hole	-	-	0.3
102	Pit	-	-	0.4
103	Pit	-	-	0.59
104	Post Hole	-	-	0.3
105	Post Hole	-	-	0.3
106	Post Hole	-	-	0.2
107	Post Hole	-	-	0.2
108	Post Hole	-	-	0.2
109	Post Hole	-	-	0.3
110	Post Hole	-	-	0.3
111	Post Hole	-	-	0.3
112	Pit	-	-	0.7
113	Post Hole	-	-	0.3
114	Ditch	0.33	1.62	-
115	Pit	-	-	0.39
116	Pit	-	-	0.4
117	Post Hole	-	-	0.23
118	Pit	-	-	3.02
119	Pit	-	-	1
120	Pit	-	-	0.51
121	Ditch	1.52	2.28	-
122	Irregular Shaped Pit	-	-	7.15
123	Pit	-	-	0.6

Context/Feature	Type	Width (m)	Length (m)	Diameter
124	Pit	-	-	0.5
125	Ditch	0.55	3.43	-
126	Post Hole	-	-	0.29
127	Pit	-	-	0.41
128	Post Hole	-	-	0.29
129	Pit	-	-	0.79
130	Pit	-	-	0.8
131	Pit	-	-	0.61
132	Pit	-	-	0.59
133	Pit	-	-	0.58
134	Post Hole	-	-	0.29
135	Pit	-	-	0.59
136	Pit	-	-	0.62
137	Pit	-	-	0.5
138	Pit	-	-	0.5
139	Pit	-	-	0.61
140	Irregular Shaped Pit	-	-	1.61
141	Pit	-	-	0.63
142	Irregular Shaped Pit	-	-	1.69
143	Pit	-	-	0.4
144	Pit	-	-	1.8
145	Pit	-	-	2
146	Pit	-	-	0.6
147	Pit	-	-	0.6
148	Pit	-	-	1
149	Irregular Shaped Pit	-	-	1.09
150	Pit	-	-	0.5
151	Pit	-	-	0.49
152	Pit	-	-	0.49
153	Pit	-	-	0.82
154	Pit	-	-	0.4
155	Pit	-	-	0.4
156	Irregular Shaped Pit	-	-	1.6
157	Pit	-	-	1
158	Post Hole	-	-	0.28
159	Post Hole	-	-	0.3
160	Post Hole	-	-	0.28
161	Pit	-	-	0.6
162	Pit	-	-	0.99
163	Pit	-	-	0.6

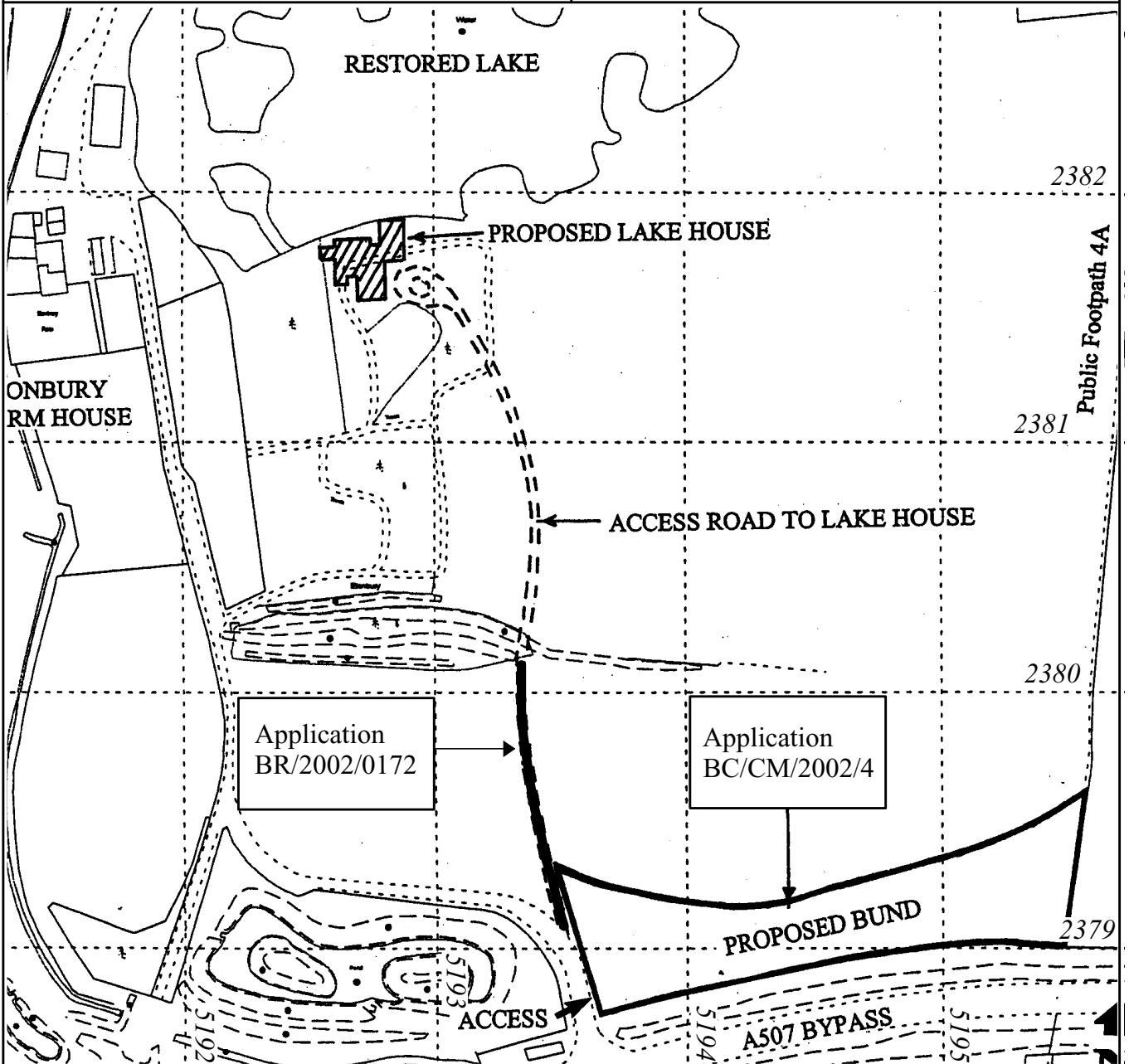
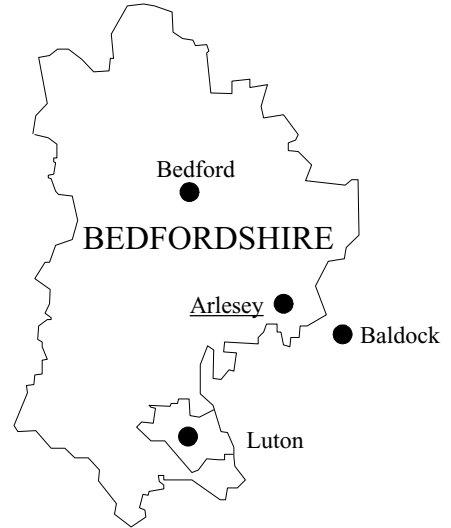
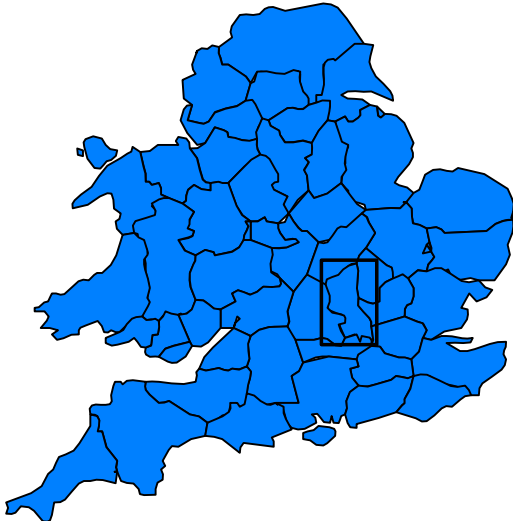
Context/Feature	Type	Width (m)	Length (m)	Diameter
164	Post Hole	-	-	0.28
165	Post Hole	-	-	0.2
166	Post Hole	-	-	0.21
167	Post Hole	-	-	0.3
168	Post Hole	-	-	0.2
169	Post Hole	-	-	0.3
170	Post Hole	-	-	0.18
171	Post Hole	-	-	0.2
172	Post Hole	-	-	0.3
173	Pit	-	-	0.38
174	Pit	-	-	0.41
175	Post Hole	-	-	0.2
176	Post Hole	-	-	0.19
177	Pit	-	-	0.59
178	Post Hole	-	-	0.21
179	Pit	-	-	0.4
180	Pit	-	-	0.39
181	Post Hole	-	-	0.21
182	Post Hole	-	-	0.19
183	Post Hole	-	-	0.3
184	Post Hole	-	-	0.24
185	Post Hole	-	-	0.19
186	Post Hole	-	-	0.3
187	Post Hole	-	-	0.29
188	Post Hole	-	-	0.19
189	Post Hole	-	-	0.3
190	Pit	-	-	0.4
191	Post Hole	-	-	0.2
192	Post Hole	-	-	0.3
193	Pit	-	-	0.8
194	Pit	-	-	0.51
195	Pit	-	-	0.7
196	Pit	-	-	1.2
197	Pit	-	-	1.39
198	Pit	-	-	0.69
199	Pit	-	-	0.78
200	Post Hole	-	-	0.3
201	Post Hole	-	-	0.2
202	Post Hole	-	-	0.3
203	Pit	-	-	0.71

Context/Feature	Type	Width (m)	Length (m)	Diameter
204	Pit	-	-	0.68
205	Pit	-	-	0.59
206	Pit	-	-	0.5
207	Pit	-	-	0.5
208	Pit	-	-	1
209	Pit	-	-	0.38
210	Pit	-	-	0.59
211	Post Hole	-	-	0.2
212	Post Hole	-	-	0.2
213	Pit	-	-	0.4
214	Pit	-	-	1.19
215	Pit	-	-	0.4
216	Pit	-	-	1.2
217	Post Hole	-	-	0.29
218	Pit	-	-	1.01
219	Post Hole	-	-	0.3
220	Post Hole	-	-	0.2
221	Pit	-	-	0.5
222	Pit	-	-	0.5
223	Pit	-	-	0.5
224	Post Hole	-	-	0.3
225	Pit	-	-	0.38
226	Pit	-	-	0.38
227	Pit	-	-	0.72
228	Post Hole	-	-	0.2
229	Gully	0.25	4.19	-
230	Slot	0.65	2.22	-
231	Pit	-	-	1.61
232	Pit	-	-	0.5
233	Pit	-	-	0.6
234	Pit	-	-	0.99
235	Pit	-	-	0.69
236	Pit	-	-	0.72
237	Pit	-	-	1.01
238	Pit	-	-	0.71
239	Post Hole	-	-	0.27
240	Post Hole	-	-	0.27
241	Post Hole	-	-	0.3
242	Pit	-	-	0.68
243	Pit	-	-	0.8

Context/Feature	Type	Width (m)	Length (m)	Diameter
244	Pit	-	-	0.5
245	Pit	-	-	1.01
246	Pit	-	-	0.41
247	Pit	-	-	0.39
248	Slot	0.35	1.2	-
249	Pit	-	-	0.39
250	Pit	-	-	0.38
251	Pit	-	-	0.39
252	Post Hole	-	-	0.2
253	Pit	-	-	0.78
254	Pit	-	-	0.39
255	Pit	-	-	0.49
256	Pit	-	-	0.99
257	Pit	-	-	0.5
258	Pit	-	-	0.71
259	Pit	-	-	0.71
260	Pit	-	-	1.01
261	Pit	-	-	0.81
262	Pit	-	-	0.6
263	Pit	-	-	0.99
264	Pit	-	-	0.99
265	Post Hole	-	-	0.3
266	Post Hole	-	-	0.2
267	Pit	-	-	0.38
268	Post Hole	-	-	0.28
269	Pit	-	-	0.5
270	Pit	-	-	1.01
271	Pit	-	-	0.5
272	Pit	-	-	0.5
273	Pit	-	-	0.7
274	Post Hole	-	-	0.19
275	Post Hole	-	-	0.2
276	Post Hole	-	-	0.18
277	Pit	-	-	1.18
278	Pit	-	-	0.4
279	Ditch	1.08	37.29	-
280	Ditch	0.55	6.32	-
281	Ditch	0.59	6	-
282	Ditch	0.08	10.61	-
283	Pit	-	-	0.38

Context/Feature	Type	Width (m)	Length (m)	Diameter
284	Pit	-	-	0.4
285	Pit	-	-	0.68
286	Post Hole	-	-	0.3
287	Post Hole	-	-	0.3
288	Post Hole	-	-	0.3
289	Ditch	0.91	38.75	-
290	Post Hole	-	-	0.2
291	Ditch	0.49	13.25	-
292	Ditch	0.98	17.09	-
293	Pit	-	-	0.7
294	Pit	-	-	0.7
295	Pit	-	-	0.4
296	Post Hole	-	-	0.3
297	Pit	-	-	0.4
298	Slot	0.48	2.36	-
299	Post Hole	-	-	0.29
300	Pit	-	-	0.7
301	Ditch	1.26	11.58	-
302	Pit	-	-	0.6
303	Irregular Shaped Pit	-	-	1.22
304	Post Hole	-	-	0.3
305	Slot	0.62	1.55	-
306	Pit	-	-	0.79
307	Ditch	1.43	45.04	-
308	Ditch	0.88	32.27	-
309	Pit	-	-	1.99
310	Slot	0.5	2.49	-
311	Irregular Shaped Pit	-	-	2.13
312	Ditch	0.67	12.5	-
313	Ditch	0.63	17.25	-
314	Ring Ditch	0.58		8.63
315	Ditch Group	2.33	56.31	-
316	Slot		2.09	-
317	Pit	-	-	0.4
318	Post Hole	-	-	0.22
319	Pit	-	-	0.41
320	Irregular Shaped Pit	-	-	2.81
321	Irregular Shaped Pit	-	-	0.79
322	Slot	0.8	2.32	-
323	Pit	-	-	0.4

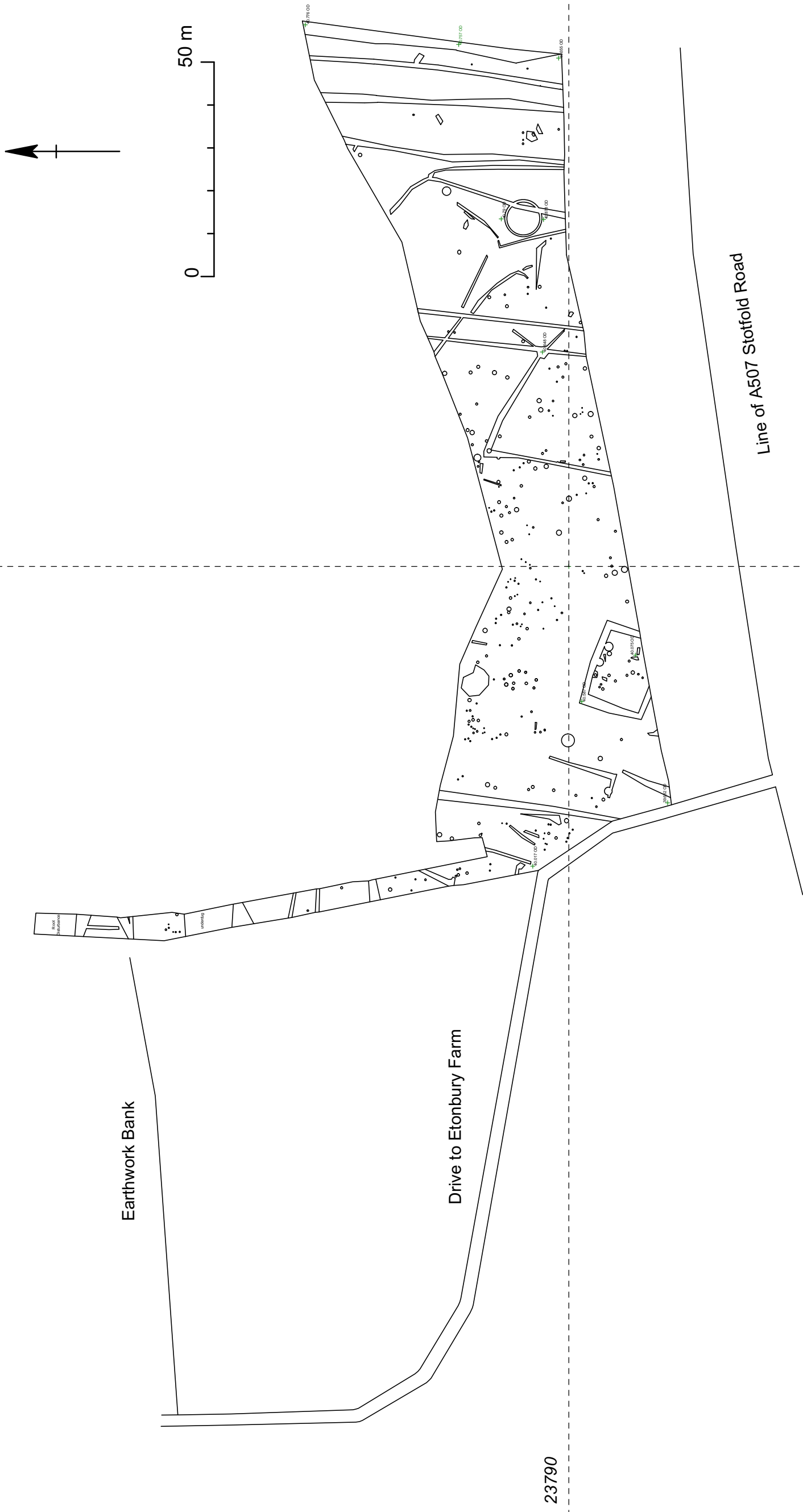
Context/Feature	Type	Width (m)	Length (m)	Diameter
324	Slot	1.27	2.36	-
325	Post Hole	-	-	0.22
326	Post Hole	-	-	0.3
327	Ditch	2.97	60.39	-
328	Ditch Group	2.25	59.44	-
329	Ditch	1.66	54.67	-
1001	Ditch Section	1.02	1.01	-
1003	Ditch Section	1.12	1.5	-
1005	Ditch Section	1.55	1	-
1007	Post Hole	-	-	0.3
1009	Pit	-	-	0.92



Site Location

Scale 1:2500



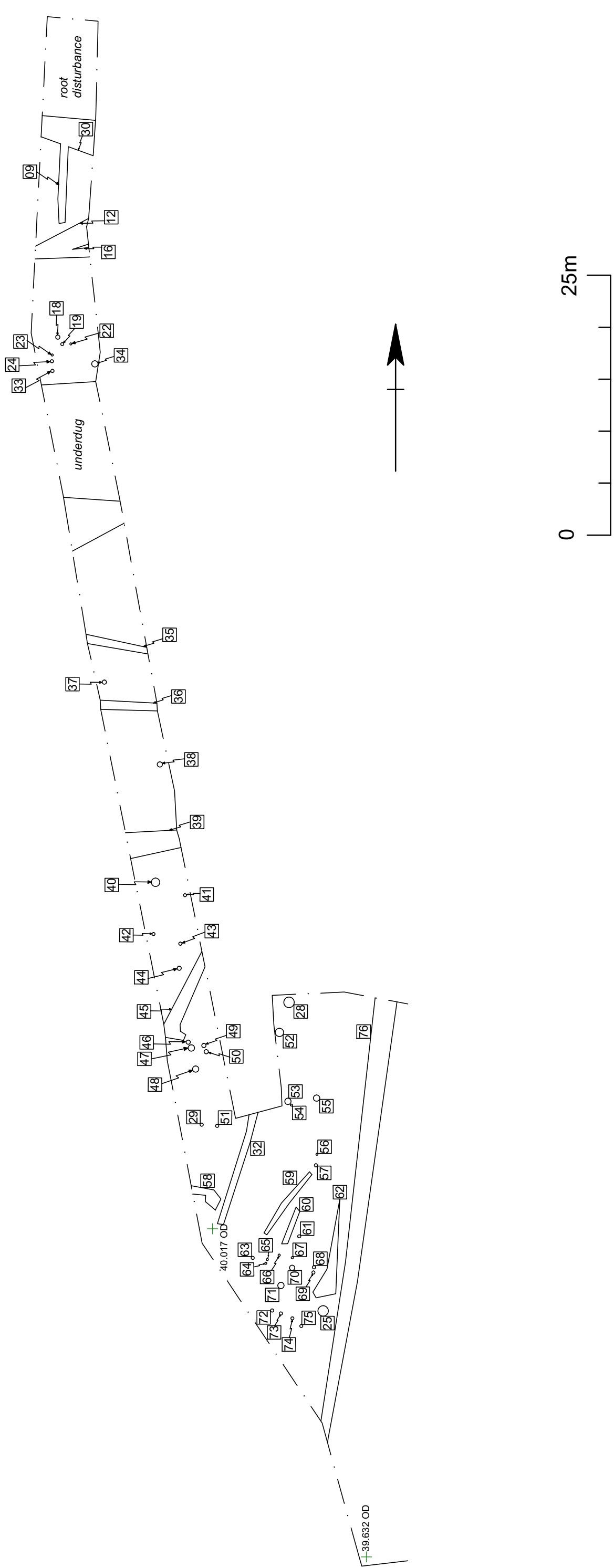


5 1 9 4 0

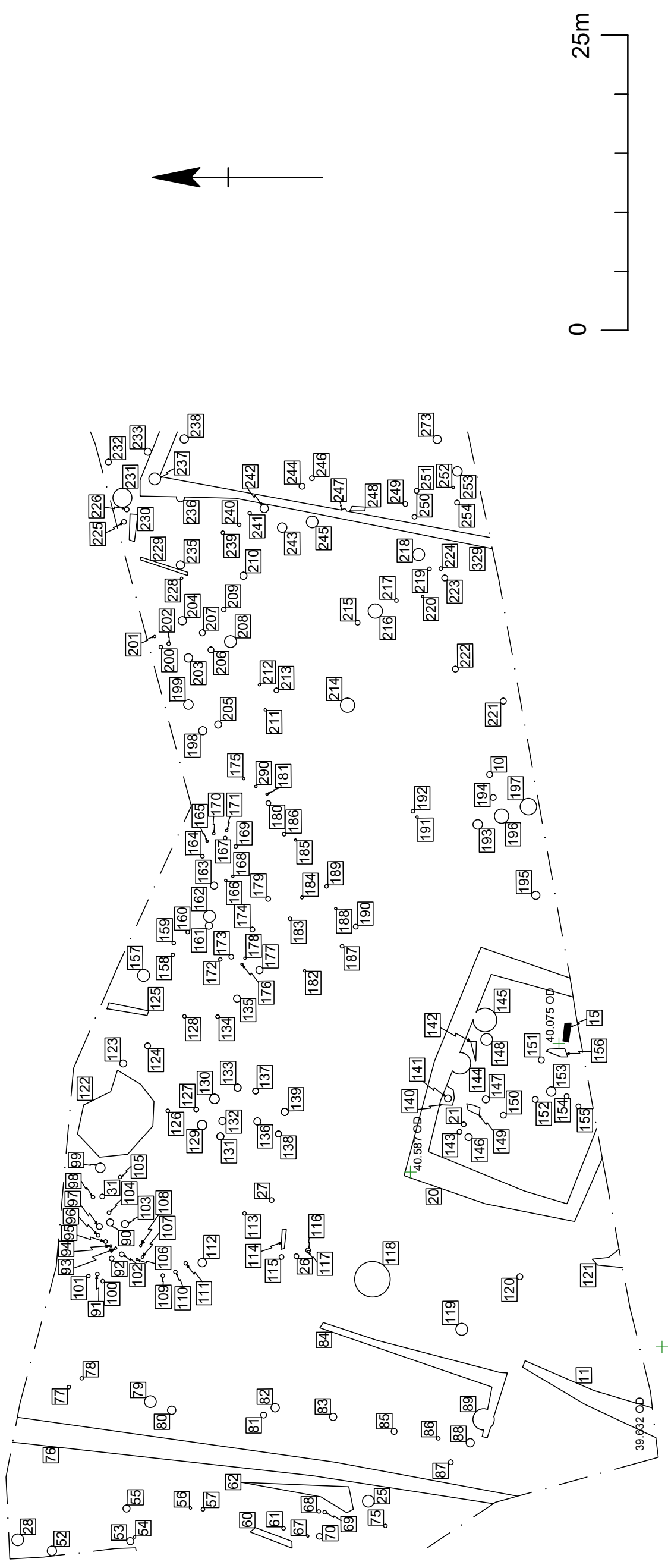
Site Layout

Scale 1:1000

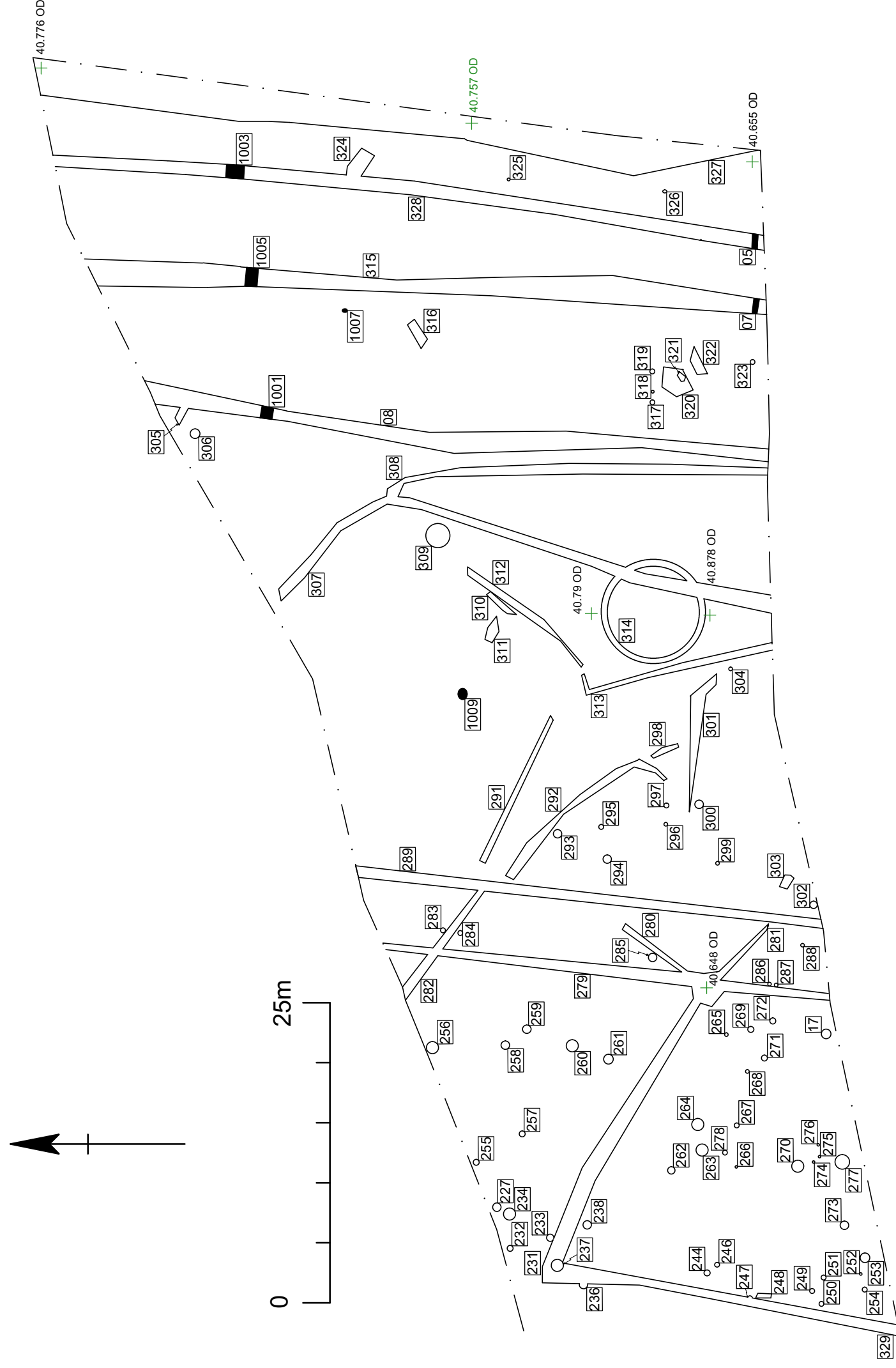
Figure 2



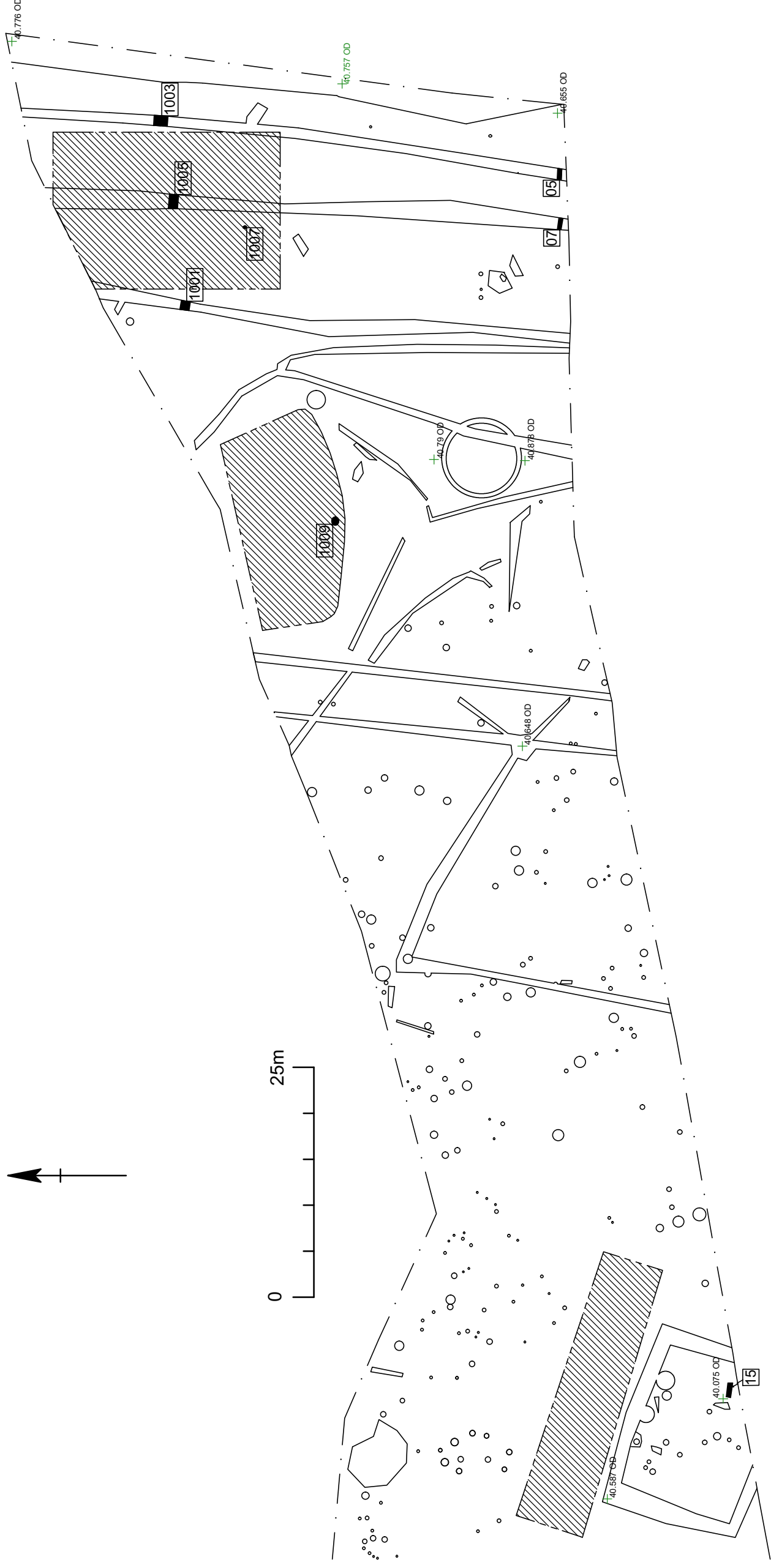
Identified features and deposits - access road



Identified features and deposits - west end

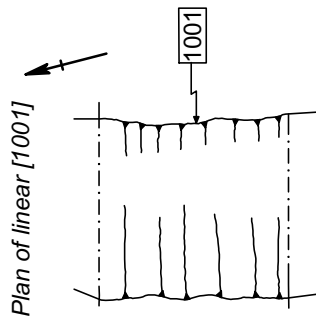
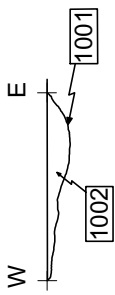


Identified features and deposits - east end

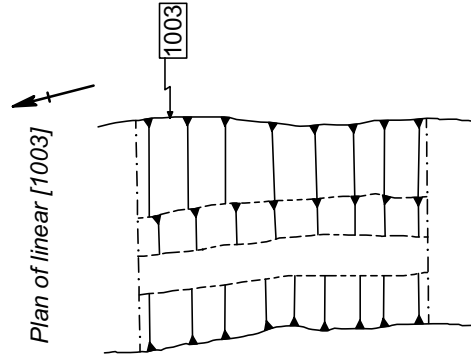
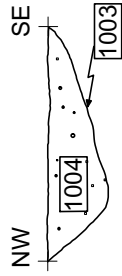


Excavated features and areas used for gravel extraction

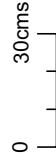
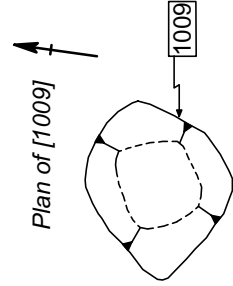
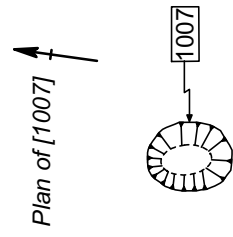
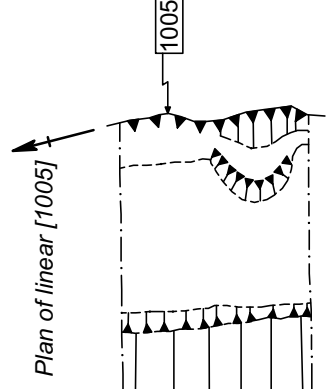
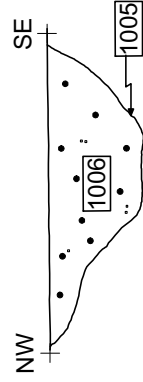
South facing section through [1001]

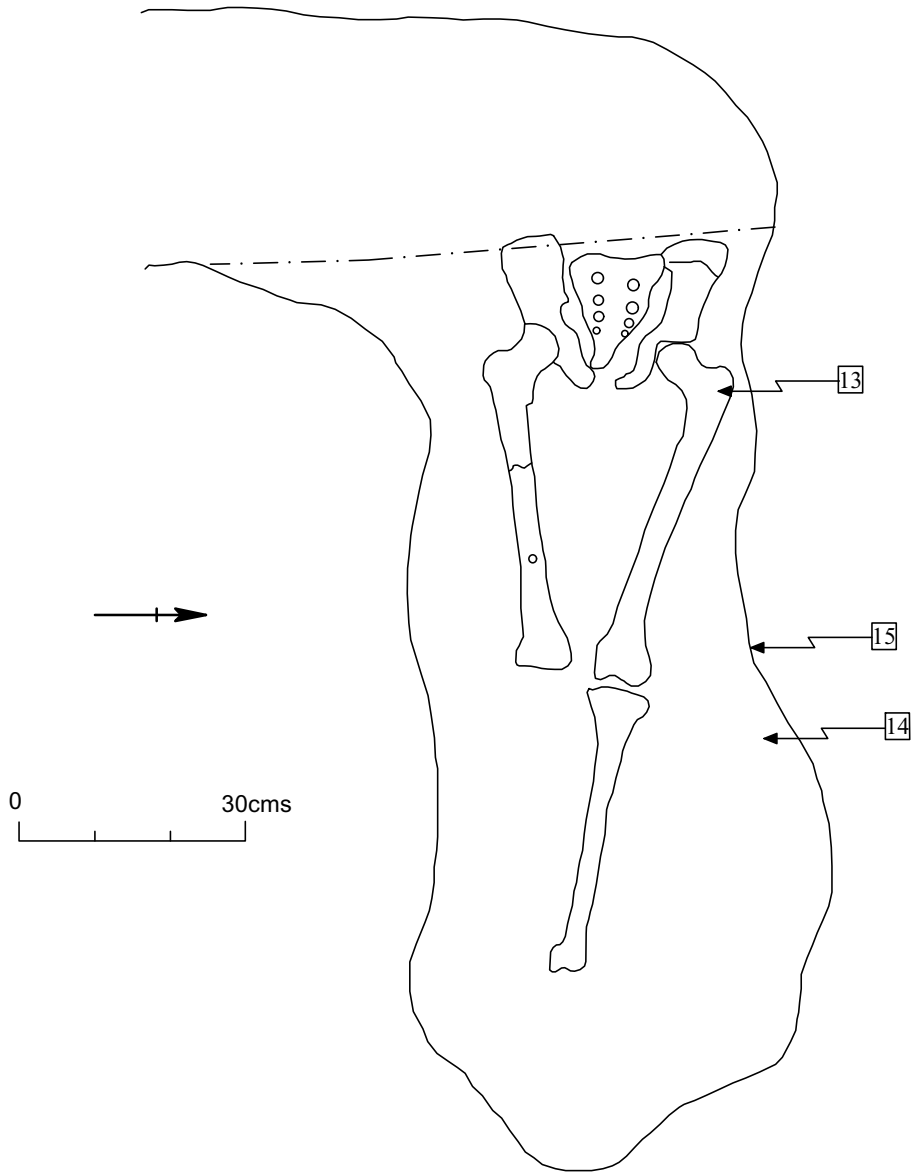


South-west facing section through [1003]



South-west facing section through [1005]





Grave [15]

Scale 1:10

Figure 8