



HERITAGE NETWORK



**Land between 92 and 104 High Street
Needlingworth, Cambs.**

HN822

Archaeological Evaluation Report



THE HERITAGE NETWORK LTD

Registered with the Institute of Field Archaeologists as an Archaeological Organisation

Archaeological Director: David Hillelson, BA MIFA

Land between
92 AND 14 HIGH STREET
Needingworth, Cambridgeshire

Project no: HN822
Event no: ECB3260
LPA ref: 09/00472/FUL

Archaeological Evaluation

Prepared on behalf of Technique (UK) Ltd.

by

Mark Winter, BSc (Hons) PgDip AIFA

And

Katie Nicholas, BA (Hons)

Report no. 570

November 2009

© The Heritage Network Ltd

11 FURMSTON COURT, ICKNIELD WAY, LETCHWORTH SG6 1UJ
TEL: (01462) 685991 FAX: (01462) 685998

Contents

	Summary.....	Pages i
Section 1	Introduction.....	Page 1
Section 2	Fieldwork	Page 2
Section 3	Discussion	Page 5
Section 4	Bibliography.....	Page 6
Section 5	Illustrations	following Page 6
Appendix	OASIS Data Entry Form.....	Page 7

The cover photograph shows the site looking west

Acknowledgements

The fieldwork for this project was carried out by Mark Winter and Andy Fawcett, and the report was edited by David Hillelson.

The Heritage Network would like to express its thanks to Larry Fitch, Fitch Butterfield Associate Architects; and Dan McConnell and Andy Thomas, Cambridgeshire County Council, for their co-operation and assistance in the execution of this project.

Summary

Site name and address:	Land between 92 and 104 High Street, Needingworth, Cambridgeshire		
County:	Cambridgeshire	District:	Huntingdonshire
Village/town:	Needingworth	Parish:	Holywell-cum-Needingworth
Planning reference:	ECB3260	NGR:	TL 3447 7241
Client name and address:	Technique (UK) Ltd, c/o Fitch Butterfield, 7 High Street, St Neots, Cambridgeshire, PE19 1BU		
Nature of work:	New housing	Former land use:	Grassland
Site status:	None	Reason for investigation:	Direction of local planning authority (PPG 16)
Position in planning process:	Post Determination (as a condition)	Project brief originator:	Local authority
Size of affected area:	1040m ²	Size of area investigated:	56m ²
Project no.:	HN822	Event no:	ECB3260
Organisation:	Heritage Network	Site Director:	David Hillelson
Project type, methods etc.:	Evaluation	Archive recipient:	Cambridgeshire Archaeological Store
Start of work	03/11/2009	Finish of work	05/11/2009
Related HMR Nos:	n/a	Periods represented:	
Oasis UID	heritage1-63835	Significant finds:	n/a
Monument types:	None		
Physical archive:	n/a		
Previous summaries/reports:	n/a		

Synopsis:

In order to determine the archaeological risk posed by a proposal to construct two new houses with associated works, The Heritage Network was commissioned by the developers to undertake a programme of archaeological evaluation in advance of development.

The archaeological evaluation of the present site revealed no evidence for significant archaeological features, deposits or finds.

On the basis of these findings, the risk that significant archaeological features or deposits might be disturbed by the construction of the proposed development, is considered to be Low.

1.Introduction

1.1 This report has been prepared on the instructions of Fitch Butterfield, acting on behalf of Technique (UK) Ltd as part of the archaeological evaluation of a development site located on land between 92 & 104 High Street, Needingworth, Cambridgeshire.

1.2 The investigation was a requirement of the planning consent granted by Huntingdonshire District Council (HDC) (ref. 09/00472/FUL), under the provisions set out in Planning Policy Guidance Note No.16 (PPG16) on Archaeology and Planning (DoE 1990). The extent of the work was defined in a Brief for Archaeological Evaluation (ref. DM 02/07/2009) prepared by the Cambridgeshire Archaeology Planning & Countryside Advice section (CAPCA) of Cambridgeshire County Council acting as archaeological advisers to the HDC. A full specification for the work was contained in the Heritage Network's approved *Project Design*, dated September 2009.

1.3 The site, centred on NGR TL 3447 7241, lies on the west side of High Street. It forms a triangular plot bounded to the north by an access drive off High Street, to the south by no. 92 High Street, to the east by the line of High Street, and to the west by a strip of undeveloped land (Figure 1). The study area is presently undeveloped; the development proposes the construction of two houses with associated access, car parking, services and landscaping.

1.4 On the basis of the known archaeology in the vicinity of the present site, CAPCA advised that archaeological evaluation of the development site should be undertaken before the development could proceed. The aim of the evaluation has been to consider the location, extent, date, character, condition, significance and quality of any remains that are liable to be threatened by the development, and to provide a local and regional, archaeological and historical context for them, in accordance with the current published regional research agenda (Brown and Glazebrook 2000), should they be discovered.

1.5 The present report is intended to provide the planning authority with sufficient data to allow it to consider the archaeological implications of the proposed development, and to determine what further mitigation measures, if any, may be required to allow the development to proceed.

2. Fieldwork

SITE TOPOGRAPHY AND GEOLOGY

2.1 Needingworth lies in the valley of the river Great Ouse on Tidal Flat deposits overlying Ampthill Clays at 10m AOD (DM 02/07/2009). The land rises gently to the north, across Needingworth and Bluntisham Heaths to Somersham.

2.2 The underlying geology of the area consists of marine and river terrace gravels and locally the soils are derived from the Efford 1 Association (571s), described as

'Well drained fine loamy soils often over gravel, associated with similar permeable soils variably affected by groundwater' (SSEW 1983).

ARCHAEOLOGICAL AND HISTORICAL BACKGROUND

1.1 The site lies on the north-western edge of Needingworth village. It may originally have been a separate manorial holding, but from the later 10th century was joined with Holywell to the south to create the manor of Holywell cum Needingworth (Page et al 1932). High Street forms part of the road from Ely to St Ives (ibid). Few buildings in Needingworth pre-date the mid 19th century, a fire on 16th September 1847 destroyed most of the village (ibid). Documentary evidence suggests that the sites of the chapel of St James (CHER 01560) and the chapel of Our Lady (CHER 03631) are located in the centre of the village.

1.2 Evidence for archaeological activity, dating particularly to the Iron Age, Roman and Saxon periods, has been recorded from within 500m of the present site. Iron Age sherds were recovered from the topsoil of a gravel pit, approximately 400m to the west, in 1953 (CHER 03632). Pottery sherds of late Roman date were found in the same area and at the same time (CHER 03632a). Other sherds of late Roman pottery, together with a considerable quantity of middle Saxon sherds, were found on the eastern side of High Street, approximately 250m to the SSW (CHER 03711/03711a). A group of Roman pots was found at 7 Council Cottages, approximately 300m to the northeast (CHER 00881). Other sherds of Roman pottery, including a group of predominantly early Roman sherds (CHER 03734) and one of undated Roman pottery (CHER 03735) have been recorded from the area of the small quarry to the west of the study area.

1.3 Excavations on the line of the Needingworth Bypass, approximately 1km to the west of the present site, revealed the remains of an enclosed settlement of Roman date (CHER 11668). Cropmarks showing a complex of curvilinear enclosures have also been recorded at Gifford's Farm, approximately 1.5km to the west of the study area (CHER 08275).

2.3 Finds of flint artefacts from the gravel extraction pits in the area indicate prehistoric activity, including a Palaeolithic flint scatter from the vicinity of Moynes Hall, approximately 1.6km to the south (CHER 16192) and flint scatters and features of Mesolithic to Bronze Age date recovered during an archaeological evaluation at the Barleycroft Farm floodplain site, approximately 1.2km to the southeast (CHER 11942).

METHODOLOGY

2.4 All fieldwork was carried out in accordance with the approved Project Design, current health and safety legislation, and the appropriate IFA and ALGAO guidance documents.

2.5 The trenches were located using fibreglass tape measures from known positions, and have been related to the Ordnance Survey national grid.

2.6 All trenches were opened using a JCB fitted with a 1.50m wide toothless ditching bucket, and reduced to the first significant archaeological horizon. Spoil from the machining was inspected for archaeological artefacts. The trenches were cleaned by hand, and all potential archaeological features and deposits were sampled to ascertain their nature, depth, date, and quality of preservation.

2.7 All identified contexts were photographed and recorded using the appropriate pro-forma. Scaled sections were drawn on drafting film at a scale of 1:50.

RESULTS

2.8 Two trenches in a T formation were excavated on the site (Figure 2). This revealed a consistent stratigraphy comprising a 0.35m thick layer of very dark grey (10YR 3/1) silty clay topsoil overlying a 0.19m thick layer of dark greyish brown (10YR 4/2) silty sand. Beneath this lay the yellowish brown (10YR 5/6) sandy gravel natural.

Trench 1

2.9 Trench 1 was located across the centre of the site across the footprint of the proposed houses. It measured 20.20m long by 1.60m wide by 0.64m deep and was aligned north to south.

2.10 Three features were encountered in the trench. Feature [101] appears to represent the remains of a heavily rooted gully and is located immediately to the north of tree bole [103]. Investigation of feature [105] revealed this to be the result of root activity. No further archaeological features, deposits or finds were observed within this trench.

Trench data:

Length (m):	20.20	Width (m):	1.60	Maximum Depth (m):	0.64	Orientation	N-S
Level at N End of Trench (mOD)		Top	12.766	Level at S End of Trench (mOD)		Top	12.686
		Base	12.196			Base	12.176
Context	Type	Description		Dimensions (m)			
				Length	Width	Depth	
	Layer	Very dark grey (10YR 3/1) silty clay topsoil.		20.20+	1.60 +	0.35	
	Layer	Dark greyish brown (10YR 4/2) silty sand subsoil.		20.20+	1.60 +	0.19	
	Layer	Yellowish brown (10YR 5/6) sandy gravel natural.		20.20+	1.60+	-	
101	Cut	Gully.		1.60+	1.55	0.55	
102	Fill	Dark yellowish brown (10YR 3/4) sandy clay gully fill.		1.60+	1.55	0.55	
103	Feature	Tree bole.		2.00+	0.99+	0.42	
105	Layer	Dark yellowish brown (10YR 4/4) root activity.		1.25+	1.45+	0.25	

Trench 2

2.11 Trench 2 was located towards the front of the site in the proposed area of new parking. It measured 15.20m long by 1.60m wide by 0.64m deep and was aligned east to west.

2.12 The trench contained two features, both of which appear to represent former hedgelines.

Trench data:

Length (m):	15.20	Width (m):	1.60		Maximum Depth (m):	0.64	Orientation	E-W	
Level at E End of Trench (mOD)			Top	12.676	Level at W End of Trench (mOD)			Top	12.786
			Base	12.106				Base	12.266
Context	Type	Description			Dimensions (m)				
					Length	Width	Depth		
	Layer	Very dark grey (10YR 3/1) silty clay topsoil.			15.20+	1.60+	0.31		
	Layer	Dark greyish brown (10YR 4/2) silty sand subsoil.			15.20+	1.60+	0.32		
	Layer	Yellowish brown (10YR 5/6) sandy gravel natural.			15.20+	1.60+	-		
201	Cut	Linear feature, potentially the result of root activity.			1.60+	0.83	0.24		
202	Fill	Dark greyish brown (10YR 4/2) sandy clay fill of [201].			1.60+	0.83	0.24		
203	Cut	Linear feature, potentially the result of root activity.			0.77+	1.18	0.33		
204	Fill	Dark yellowish brown (10YR 4/4) sandy clay fill of [203].			0.77+	1.18	0.33		

3. Discussion

3.1 The site lies within a significant archaeological landscape, with evidence from the Iron Age onwards within 500m. Two trenches were excavated in order to investigate the archaeological potential of the present site. No datable archaeological features, deposits or finds were observed within the trenches and, although gully [101] may represent former activity on the site, the other remains appear to represent natural features.

Conclusion

3.2 The archaeological evaluation of the present site revealed no evidence for significant archaeological features, deposits or finds.

3.3 On the basis of these findings, the risk that significant archaeological features or deposits might be disturbed by the construction of the proposed development, is considered to be Low.

Confidence Rating

3.4 During the course of the fieldwork, the conditions were generally acceptable for the identification of potential features and deposits, and for their investigation.

3.5 There are no circumstances which would lead to a confidence rating for the work which was less than High.

4. Bibliography

Archaeology Data Service: <http://www.ads.ahds.ac.uk/catalogue>

Brown, N. & Glazebrook, J. 2000, *Research and Archaeology: a framework for the eastern counties, 2. Research agenda and strategy*. East Anglian Archaeology

Glazebrook, J. 1997, *Research and Archaeology: a framework for the eastern counties, 1. Resource Assessment*. East Anglian Archaeology

Heritage Gateway: <http://www.heritagegateway.org.uk>

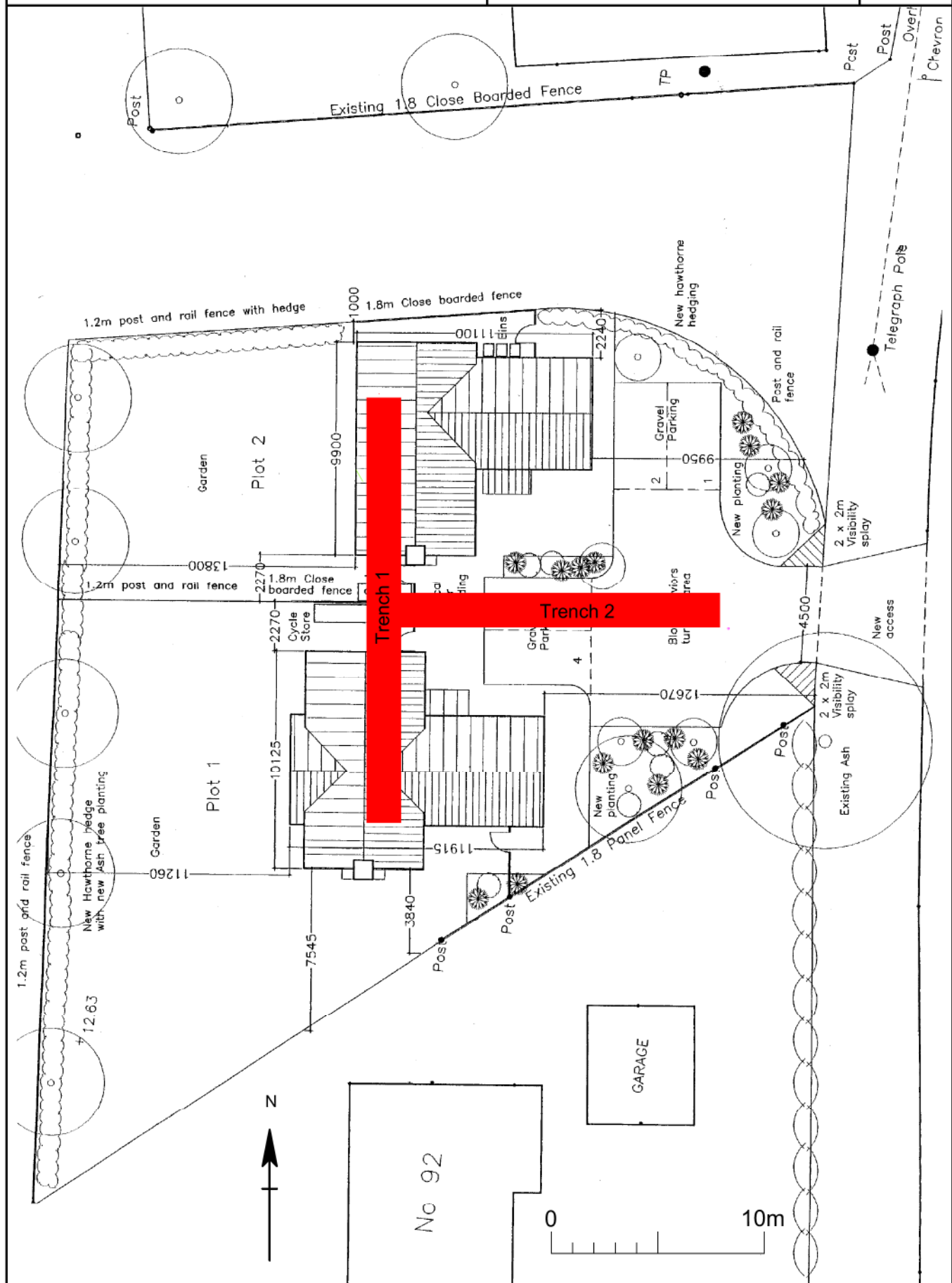
Institute of Field Archaeologists, 1999 *Standard and Guidance for Field Evaluation*. IFA

Page, W., Proby, G. & Inskip Ladds, S. (eds.), 1932, *A History of the County of Huntingdon: Volume 2* Victoria County History.

www.british-history.ac.uk/reoprt.aspx?compid=42477&strquery=HolywellcumNeedingworth

5. Illustrations

Figure 1	Site location
Figure 2	Site layout
Figure 3	Plans of Trench 1 & 2
Figure 4	Sections drawings
Plate 1	Trench 1 looking north
Plate 2	Trench 2 looking west
Plate 3	[101] looking east
Plate 4	[103] looking north-east
Plate 5	[105] looking east
Plate 6	[201] looking south
Plate 7	[203] looking south
Plate 8	Site post excavation

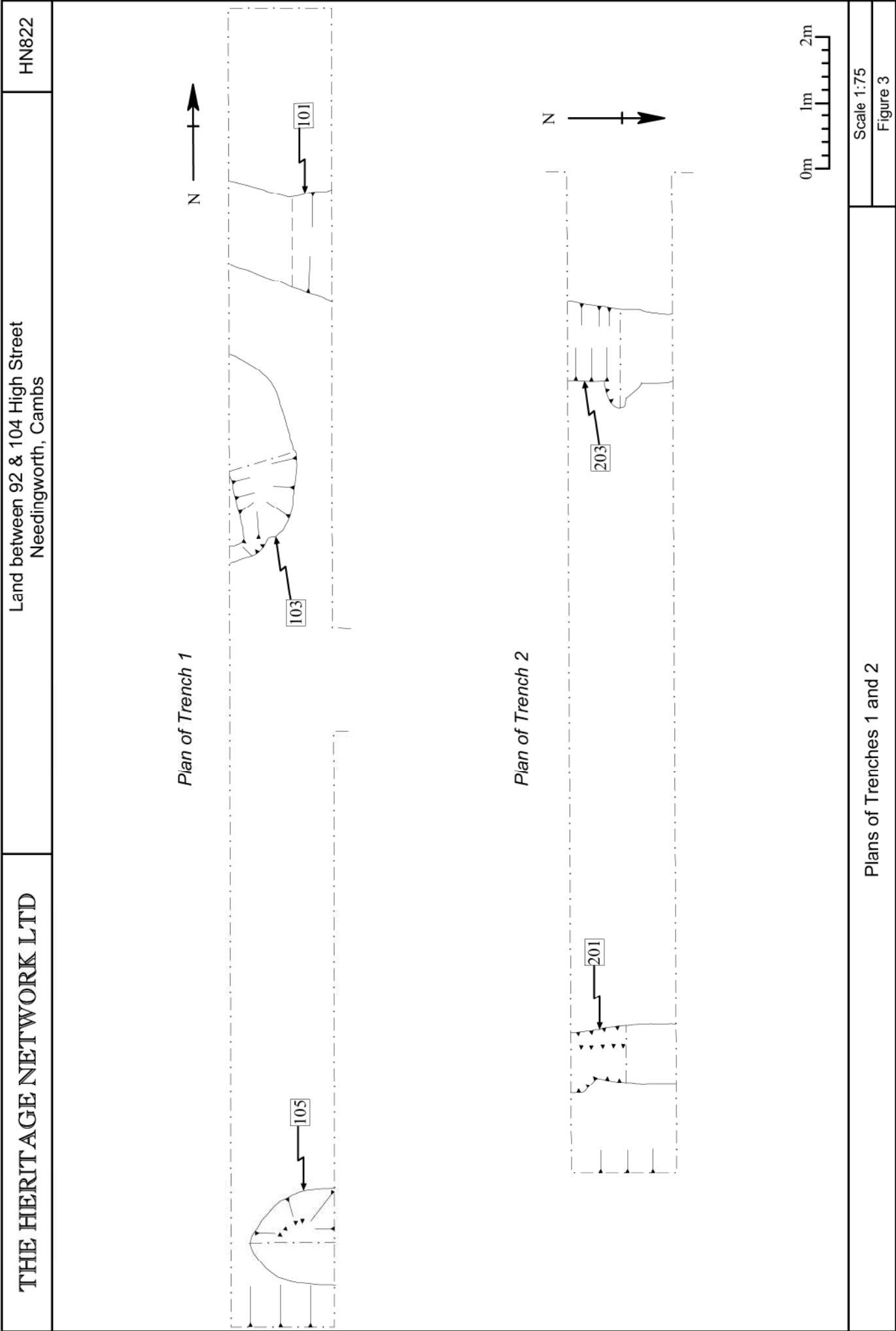


Site layout

Courtesy Fitch Butterfield Associates

Scale 1:250

Figure 2



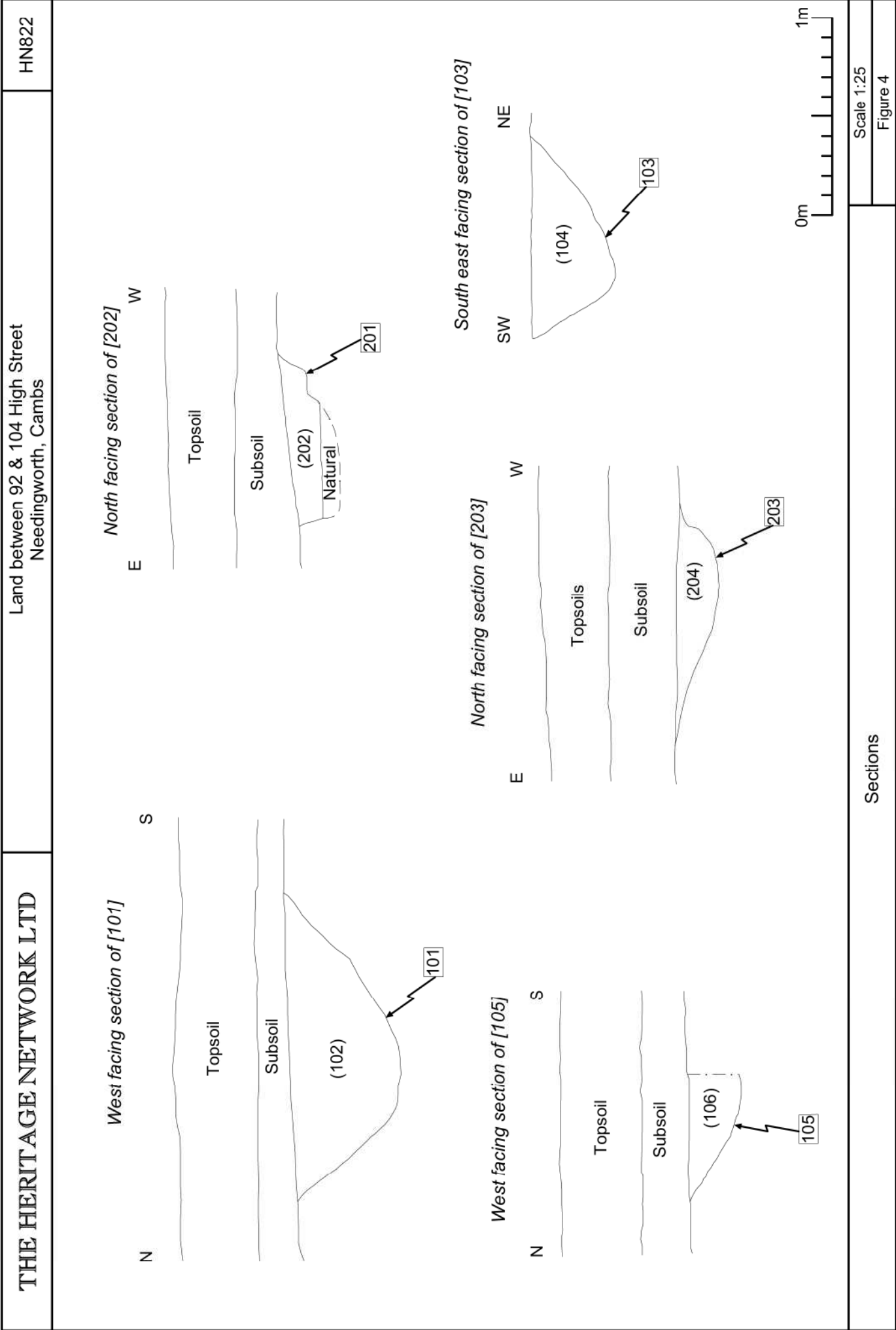




Plate 1: Trench 1, looking north



Plate 2: Trench 2, looking west



Plate 3: [101] Looking east



Plate 4: [103] Looking north west



Plate 5: [105] Looking east



Plate 6: [201] Looking south



Plate 7: [203] Looking west

Appendix

OASIS Data Entry Form

OASIS ID: heritage1-63835

Project details

Project name	Needingworth, land between 92 and 104 High St
Short description of the project	Archaeological Evaluation of site in preparation for 2 new dwellings. In order to determine the archaeological risk posed by a proposal to construct two new houses with associated works, The Heritage Network was commissioned by the developers to undertake a programme of archaeological evaluation in advance of development. The archaeological evaluation of the present site revealed no evidence for significant archaeological features, deposits or finds.
Project dates	Start: 04-11-2009 End: 05-11-2009
Previous/future work	No / No
Any associated project reference codes	HN822 - Sitecode
Type of project	Field evaluation
Site status	None
Current Land use	Grassland Heathland 5 - Character undetermined
Monument type	NONE None
Significant Finds	NONE None
Methods & techniques	'Sample Trenches'
Development type	Small-scale (e.g. single house, etc.)
Prompt	Direction from Local Planning Authority - PPG16
Position in the planning process	After full determination (eg. As a condition)

Project location

Country	England
Site location	CAMBRIDGESHIRE HUNTINGDONSHIRE SAINT IVES Needingworth, land between 92 and 104 High Street
Postcode	PE27 4SJ
Study area	1040.82 Square metres
Site coordinates	TL 3437 7246 52.3333333333 -0.02777777777780 52:20:00N 00:01:40W Point
Height OD / Depth	Min: 10.00m Max: 10.00m

Project creators

Name of Organisation	Heritage Network
Project brief originator	Local Authority Archaeologist and/or Planning Authority/advisory body
Project design originator	Heritage Network
Project director/manager	David Hillelson
Project supervisor	Mark Winter
Type of sponsor/funding body	Landowner

Project archives

Physical Archive Exists?	No
Digital Archive recipient	Cambridgeshire Archaeological Store
Digital Archive ID	ECB3260

Digital Media available	'Images raster / digital photography','Text'
Paper Archive recipient	Cambridgeshire County Archaeological Store
Paper Archive ID	ECB3260
Paper Media available	'Context sheet','Diary','Photograph','Plan','Report','Section'

Project bibliography 1

Publication type	Grey literature (unpublished document/manuscript)
Title	Needingworth, land between 92 and 104 High St.
Author(s)/Editor(s)	Winter, M. & Nicholas, K.
Other bibliographic details	Report Number 570
Date	2009
Issuer or publisher	Heritage Network
Place of issue or publication	Letchworth, Hertfordshire
Description	A4 comb bound booklet; 8 pages of text; 4 figures; 7 photographic plates