

EW03 Enabling Works Contract. AWH C2a Interim Report for Trial Trench Evaluation at C21010 Rocky Lane - Wendover - Buckinghamshire (AC210/8)

Document no.: 1EW03-FUS-EV-REP-CS03_CL05-009412

MDF ref:

Revision	Date	Author	Checked by	Approved by	Revision Details:
C01	20/02/2019	S.Thorpe	S. Roper	D. Bonner	
C01	25/03/2019	S.Thorpe	S. Roper	D. Bonner	

Contents

1	Executive Summary	1
2	Introduction	1
2.2	Project Plan	1
3	Preliminary Results	2
3.1	Site Geology	2
3.2	Trench Summary	2
3.3	Archaeological Results	2
4	Summary	2
5	Appendix - Figures	4

List of Tables

Table 1 – Summary of trench results

List of Figures

Figure 1 - Site Location

Figure 2 - Overview of Excavated Evaluation Trenches

Figure 3 - Overview of Archaeological Features

Figure 4 - Detail of Trench Results 1 of 3

Figure 5 - Detail of Trench Results 2 of 3

Figure 6 - Detail of Trench Results 3 of 3

1 Executive Summary

- 1.1.1 Between January and February 2019 Infra undertook an archaeological evaluation on land at Rocky Lane, Wendover Dean, Buckinghamshire.
- 1.1.2 The site was located on the north side of Rocky Lane, approximately 2.5km southeast of Wendover (Figure 1)
- 1.1.3 The evaluation was undertaken in order to satisfy planning requirements associated with construction of the north portal of the Chiltern tunnel leading to the main rail alignment, and associated engineering earthworks and other works as outlined in the Project Plan (1EW03-FUS-EV-REP-CS03_CL05-002524).
- 1.1.4 A total of 57 trenches were excavated with archaeological remains recorded in two, these being a possible medieval pit in trench 19 and a possible dew-pond and burnt-out tree-bole in trench 19.

2 Introduction

- 2.1.1 This report details the results of an archaeological evaluation, conducted in January and February 2019, on land designated as Rocky Lane, Small Dean South Embankment, Wendover, Buckinghamshire (AC210/6) (NGR 487969 205521; Figure 1). The work was undertaken by Infra for Fusion on behalf of HS2.
- 2.1.2 The site was located on the north side of Rocky Lane, approximately 2.5km southeast of Wendover (Figure 1) and comprised a single land parcel (Fusion Site GIS ID C21010, 1C18RCLTT (NGR 487750 205960, Figure 1).
- 2.1.3 The aims of the trial trenching were to:
 - confirm the presence/absence, extent and depth of any surviving archaeological remains within the Site;
 - determine the nature, date, condition, state of preservation including any preservation bias, complexity and significance of any archaeological remains;
 - determine the likely range, quality and quantity of artefactual and environmental evidence present;
 - suggest measures, if appropriate and feasible, for further archaeological investigation to mitigate identified significant impacts; and
 - contribute to the delivery of GWSI: HERDS Specific Objectives as specified in section 4.2 Project Plan.

2.2 Project Plan

- 2.2.1 The trial trench evaluation at Rocky Lane was implemented to address a Project Plan designed and prepared by Fusion (doc. ref. 1EW03-FUS-EV-REP-CS03_CL05-002524).

3 Preliminary Results

3.1 Site Geology

- 3.1.1 The natural geology comprised chalk of the Holywell Nodular Chalk Formation and the New Pit Chalk Formation with no superficial deposits recorded.

3.2 Trench Summary

- 3.2.1 Two trenches contained archaeological features with the remaining 55 being devoid of archaeological features (Figure 3).
- 3.2.2 A summary of the findings is in table 1, below.

Table 1 – Summary of trench results

Trench Number	Features	Provisional Date
1 – 9	Blank	n/a
10-11	Void (due to numbering error)	n/a
12-15	Blank	n/a
16	1 x Possible dew-pond or hollow, 1 x Burnt-out tree-root	medieval
17-18	Blank	n/a
19	1 x Small pit	medieval
20-59	Blank	n/a

3.3 Archaeological Results

- 3.3.1 The initial results of the positive trenches are discussed below in numerical order (Figure 3-6).

Trench 16 (figure 4)

- 3.3.2 A shallow depression [301605], 8m long x 1.8m wide, 0.4m max depth and filled with a dark brown silt clay, with rare charcoal rich lenses/rooting.
- 3.3.3 A burnt-out tree root from which a single small fragment of pottery, spot-dated on site as being possibly medieval, was recovered.

Trench 19 (figure 4)

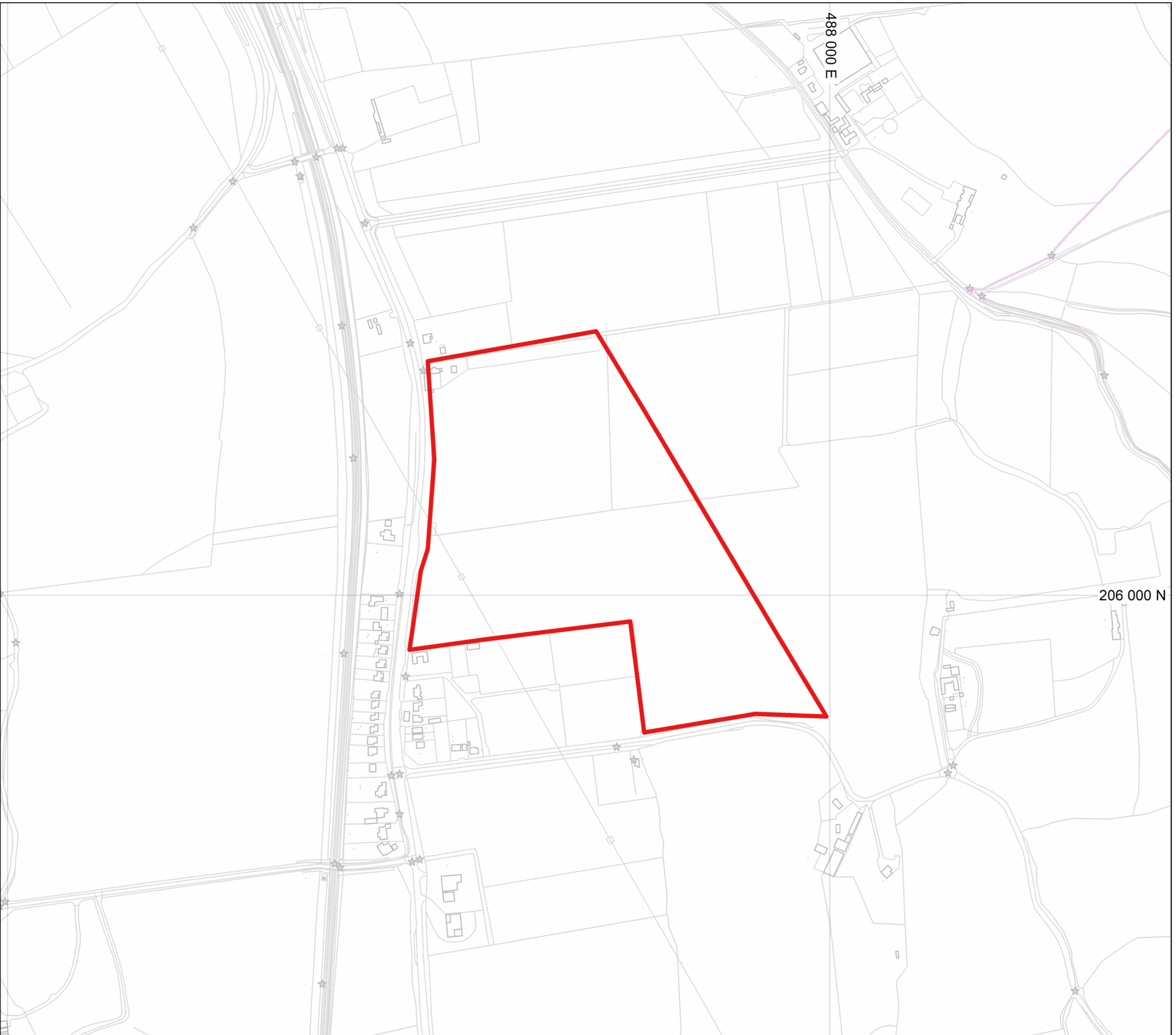
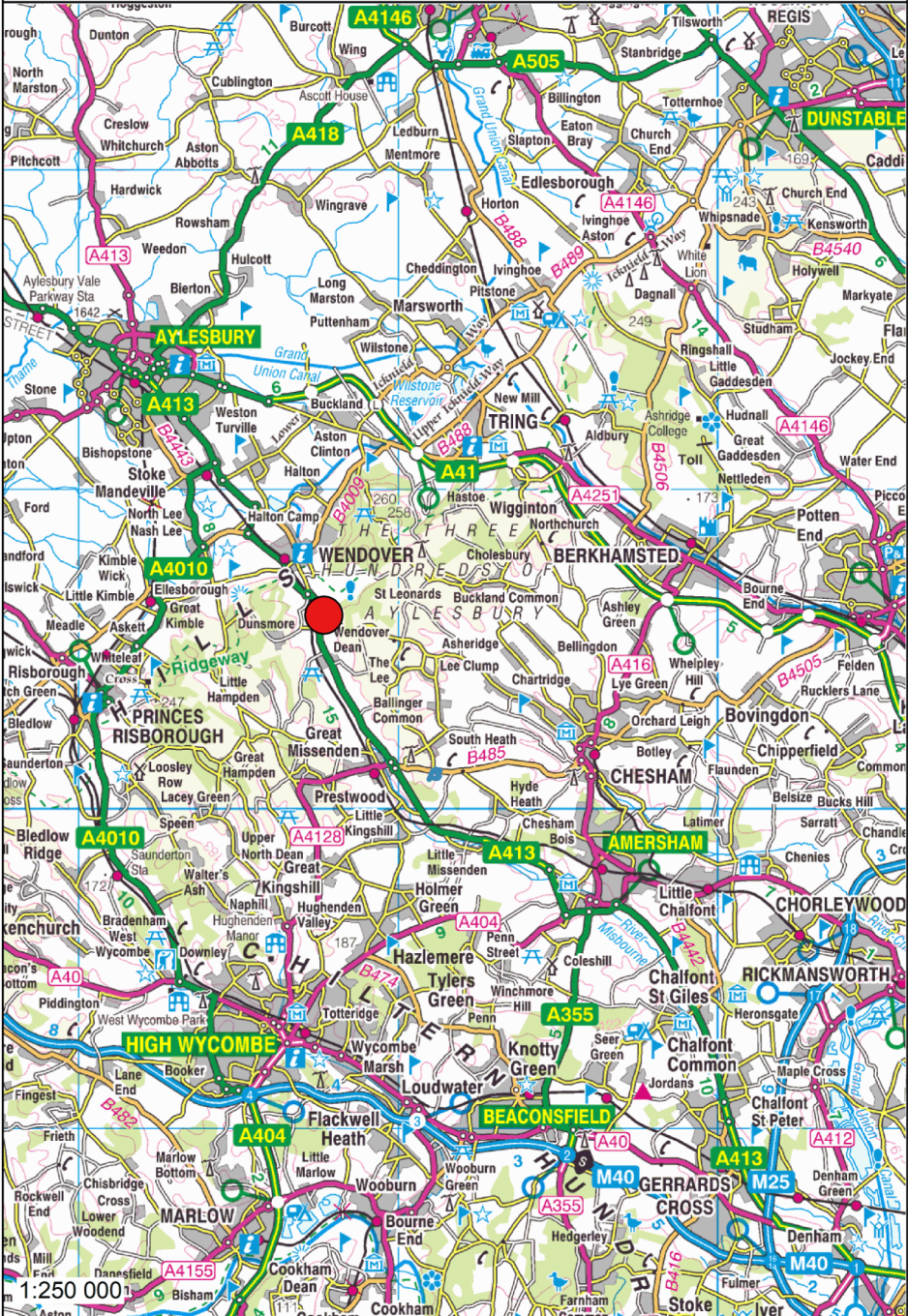
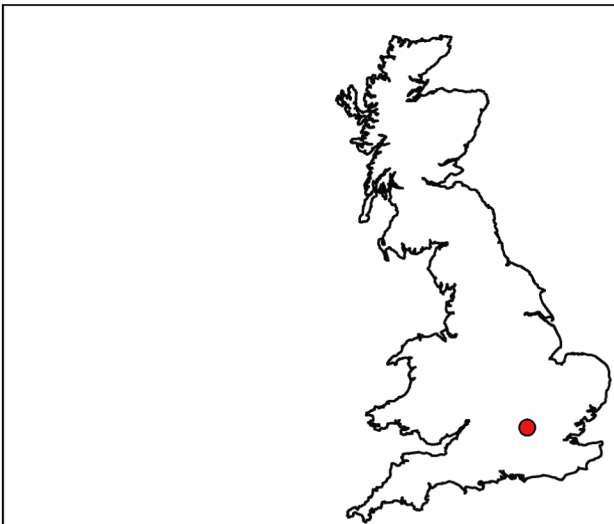
- 3.3.4 A small pit [301905], roughly oval, measuring 0.65m long, 0.45m wide, 0.3m deep and filled with a dark brown clay silt, moderately charcoal-rich fill which produced numerous fragments of pottery, also spot-dated on site as being possibly medieval, all from a single vessel.

4 Summary

Very few archaeological features were recorded within the trial trenches, with the majority proving blank and only two containing archaeological material. The depression in trench 16 may be a dew pond or natural hollow, and a single sherd of possible medieval pottery was recovered from the fill of a burnt-out tree root in the same trench. The small pit within trench 19 has been interpreted as a possible rubbish

pit and may be indicative of nearby settlement-related activity taking place within the vicinity of C21010.

5 Appendix - Figures



HS2 Ltd accept no responsibility for any circumstances, which arise from the reproduction of this map after alteration, amendment or abbreviation or if it issued in part or issued incomplete in any way.

Legend

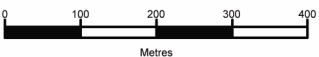
- Site location
- Site extent

High Speed Two
Figure 1. Site location

Published

HS2

Scale at A3: 1:10,000



Doc Number: 1EW03-FUS-GI-MAP-CS03_CL05-000006 Date: 22/02/19



HS2 Ltd accept no responsibility for any circumstances, which arise from the reproduction of this map after alteration, amendment or abbreviation or if it issued in part or issued incomplete in any way.

Legend

- Excavated evaluation trench
- Site extent



High Speed Two
Figure 2. Overview of excavated evaluation trenches

Published

Scale at A3: 1:2,000

Doc Number: 1EW03-FUS-GI-MAP-CS03_CL05-000006 Date: 22/02/19



HS2 Ltd accept no responsibility for any circumstances, which arise from the reproduction of this map after alteration, amendment or abbreviation or if it issued in part or issued incomplete in any way.

Legend

- Archaeological feature
- Excavated evaluation trench
- Site extent



High Speed Two
Figure 3. Overview of archaeological features

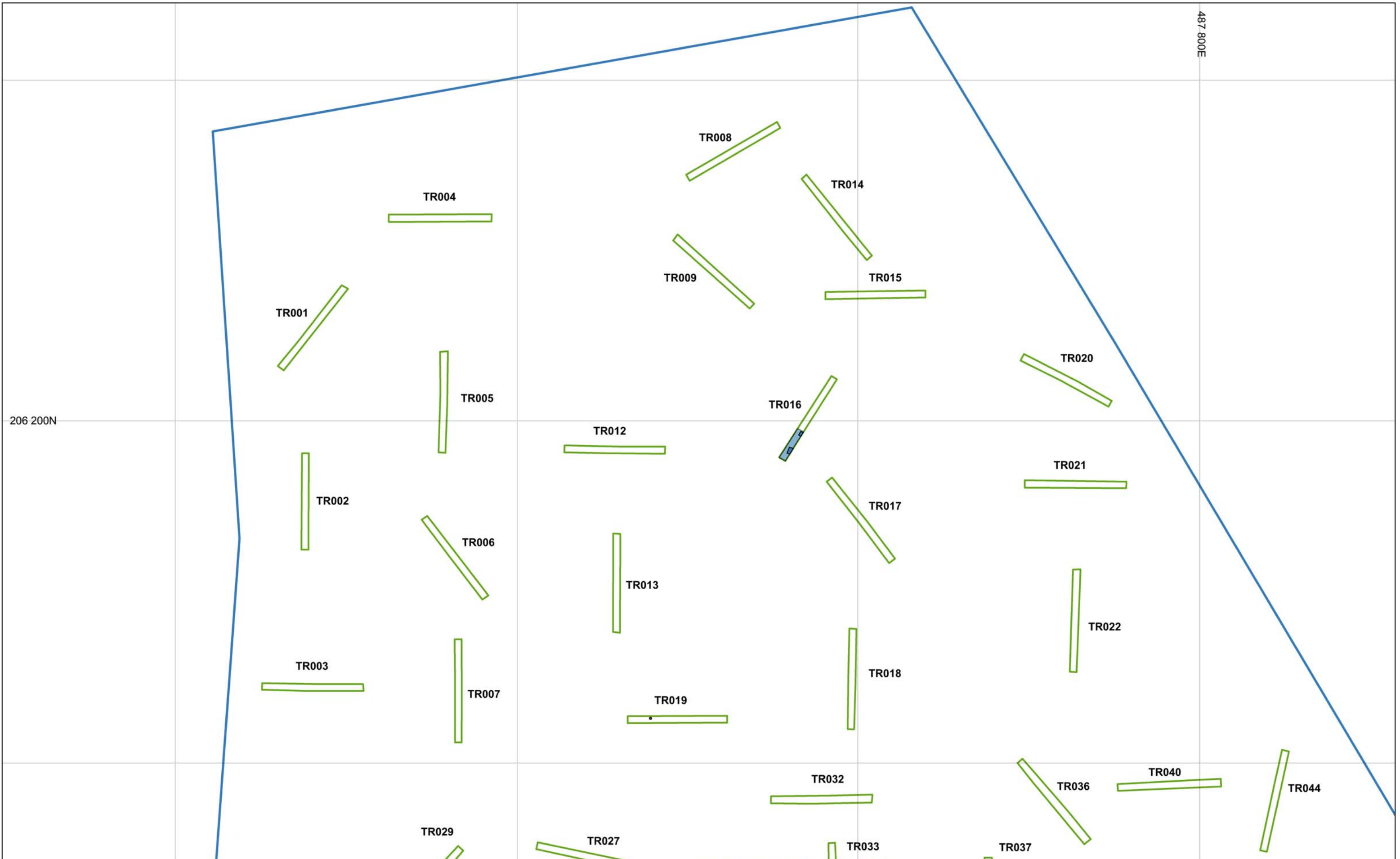
Published

HS2

Scale at A3: 1:2,000

0 20 40 60 80 Metres

Doc Number: 1EW03-FUS-GI-MAP-CS03_CL05-000006 Date: 22/02/19



HS2 Ltd accept no responsibility for any circumstances, which arise from the reproduction of this map after alteration, amendment or abbreviation or if it issued in part or issued incomplete in any way.

- Legend**
- Archaeological feature
 - Excavated evaluation trench
 - Site extent

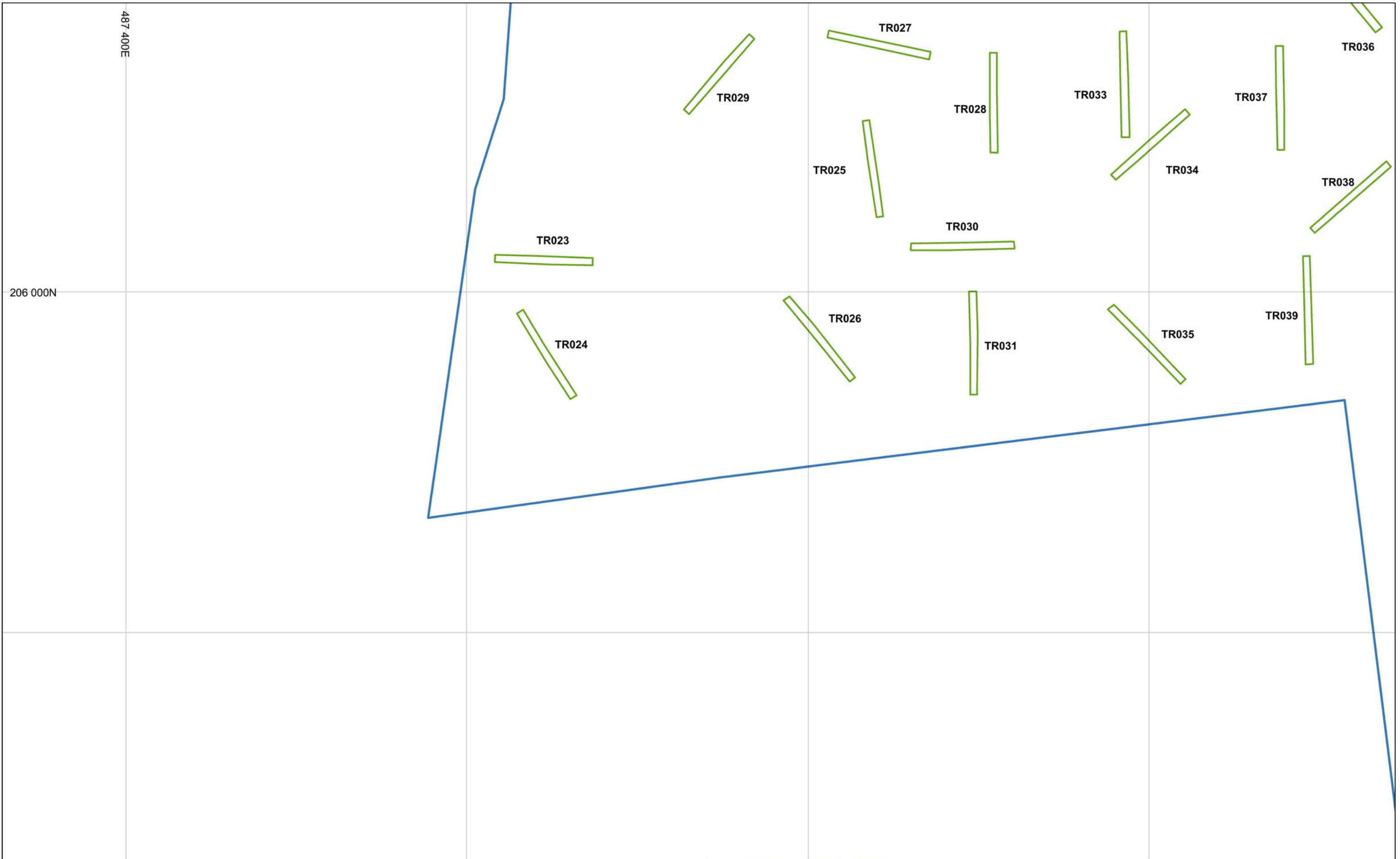


High Speed Two
Figure 4. Detail of trench results 1 of 3

Published

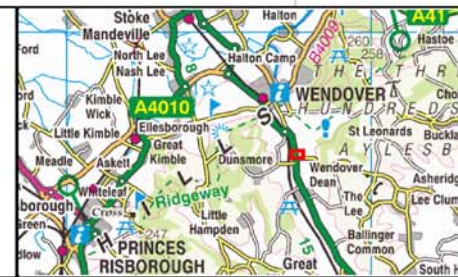
Scale at A3: 1:1,000

Doc Number: 1EW03-FUS-GI-MAP-CS03_CL05-000006 Date: 22/02/19



HS2 Ltd accept no responsibility for any circumstances, which arise from the reproduction of this map after alteration, amendment or abbreviation or if it issued in part or issued incomplete in any way.

- Legend**
- Archaeological feature
 - Excavated evaluation trench
 - Site extent



High Speed Two
Figure 5. Detail of trench results 2 of 3

Published

Scale at A3: 1:1,000

Doc Number: 1EW03-FUS-GI-MAP-CS03_CL05-000006 Date: 22/02/19

