

ARCHAEOLOGICAL
SERVICES
DURHAM UNIVERSITY

on behalf of
Durham County Council

North Bondgate Car Park
Bishop Auckland
County Durham

archaeological monitoring

report 3476
June 2014

Contents

1.	Summary	1
2.	Project background	2
3.	Landuse, topography and geology	2
4.	Archaeological and historical background	3
5.	The archaeological monitoring	3
6.	The archaeological resource	4
7.	Sources	4
Appendix 1: Data table		5
Appendix 2: Stratigraphic matrices		6

Figures

Figure 1:	Site location
Figure 2:	Approximate borehole location
Figure 3:	Borehole 1, looking north
Figure 4:	Borehole 2, looking north
Figure 5:	Borehole 3, looking north
Figure 6:	Borehole 4, looking north
Figure 7:	Borehole 5, looking north

1. Summary

The project

- 1.1 This report presents the results of an archaeological watching brief conducted during a development at North Bondgate, Bishop Auckland. The works comprised of the monitoring of five bore holes.
- 1.2 The works were commissioned by Durham County Council and conducted by Archaeological Services Durham University.

Results

- 1.3 No significant archaeological resource was identified, which may be a reflection of the limited nature of the groundworks.

2. Project background

Location (Figure 1)

- 2.1 The site is located at North Bondgate, Bishop Auckland, County Durham (NGR: NZ 2095 3015). The site is bounded by North Bondgate to the south, buildings to the east, and open ground to the north and west. There is a sharp drop at the rear of the site into the valley below.

Development

- 2.2 The development was for the extension of the existing North Bondgate car park.

Objective

- 2.3 The objective of the monitoring programme was to identify and record any archaeological features or artefacts uncovered during groundworks.

Specification

- 2.4 The works have been undertaken in accordance with a Written Scheme of Investigation] provided by Archaeological Services Durham University (reference DS14.194) and approved by the planning authority.

Dates

- 2.5 Fieldwork was undertaken on the 23rd of May 2014. This report was prepared for June 2014.

Personnel

- 2.6 Fieldwork was conducted by Jonathan Dye. This report was prepared by Jonathan Dye, with graphics by David Graham. The Project Manager was Daniel Still.

Archive/OASIS

- 2.7 The site code is **BAN14**, for **Bishop Auckland North Bondgate 2014**. The archive is currently held by Archaeological Services Durham University and will be transferred to Bowes Museum in due course. Archaeological Services Durham University is registered with the **Online Access to the Index of archaeological investigationS** project (**OASIS**). The OASIS ID number for this project is **archaeol3-182496**.

3. Landuse, topography and geology

- 3.1 At the time of the monitoring, the development area was a former council yard and comprised an area of concrete and tarmac totalling c.0.45 ha
- 3.2 The site is located on the northern side of North Bondgate, approximately 250m south of the River Wear. The site is predominately level, with a mean elevation of c.96.3m OD. There is a steep slope immediately to the north of the site, where the level drops to c.83m OD.
- 3.3 The drift geology of the site is made up of sand, gravel and clay strata overlying carboniferous coal measures, sandstone and mudstone. A geological structural fault (Butterknowle Fault) has been detected in the south-east corner of the site.

4. Archaeological and historical background

Previous archaeological works

- 4.1 In 2012 two evaluation trenches were excavated on the site as part of a previous development proposal, which also included further trenches in the adjacent land to the east. In the eastern part of the site, results from the evaluation trenches indicated that the area had been truncated by modern activity, and no archaeological resource was identified. In the bus depot, a probable medieval pit was identified which contained artefactual and paleoenvironmental evidence. This suggests the presence of a medieval archaeological resource surviving in this area of the development site, probably relating to former tenements and associated structures. Modern disturbance in the form of underground fuel tanks and foundations is likely to have removed or truncated this in places.
- 4.2 A desk-based assessment and walkover survey of the development site was undertaken by Archaeological Services Durham University in June 2012 (Archaeological Services 2012), updating an earlier assessment, and is summarised here.

The prehistoric and Roman periods (up to 5th century)

- 4.3 There is no direct evidence for the occupation of the area in the prehistoric or Romano-British periods, although the use of the area in these periods remains a possibility

The medieval period (5th century to 1540)

- 4.4 The area may have been occupied during the early medieval period. During the medieval and post-medieval periods a series of tenements existed on the site, extending back from the street frontage. Archaeological deposits identified in the 2012 evaluation trenches may relate to these.

The post-medieval and modern period (1541 to present)

- 4.5 Geotechnical borehole logs indicate that variable depths of made ground are present across the site, typically from 0.7 to 5m. This material comprises modern overburden but may also contain medieval and post-medieval deposits of archaeological significance. An archaeological resource may also survive the beneath the modern overburden.

5. The archaeological monitoring

Introduction

- 5.1 Five 300mm boreholes were planned, three to assess the depth of the concrete and two to an arbitrary depth of 450mm to assess ground conditions.

Borehole 1 (Figure 3)

- 5.2 Borehole 1 was in the northern, concreted, part of the site and reached a depth of 0.35m. A deposit of grey-brown silty clay [4] was revealed beneath the concrete [1].

Borehole 2 (Figure 4)

- 5.3 Borehole 2 was in the north-east corner of the concreted part of the site and reached a depth of 0.25m. A deposit of modern hardcore and rubble [3] was revealed beneath the concrete [1].

Borehole 3 (Figure 5)

- 5.4 Borehole 3 was in the south-east corner of the concreted part of the site and reached a depth of 0.15m. A deposit of modern hardcore and rubble [3] was revealed beneath the concrete [1].

Borehole 4 (Figure 6)

- 5.5 Borehole 4 was in the south of the tarmacked part of the site and reached a depth of 0.45m. A deposit of grey brown silty clay [4] and a yellow sandy clay [5] were revealed beneath the tarmac [2]. The edge between these two deposits suggested a cut feature.

Borehole 5 (Figure 7)

- 5.6 Borehole 5 was in the north-western part of the site and reached a depth of 0.45m. A deposit of modern hardcore and rubble [3] was revealed beneath the tarmac [3].

6. The archaeological resource

- 6.1 No significant archaeological deposits or artefacts have been uncovered, however given the dimensions of the boreholes and the limited nature of the works, reliable interpretation of the deposits identified is not possible.

7. Sources

Archaeological Services 2012 *North Bondgate Redevelopment desk based assessment*. Unpublished report **2935**, Archaeological Services Durham University

Archaeological Services 2012 *North Bondgate Redevelopment archaeological evaluation*. Unpublished report **3001**, Archaeological Services Durham University

Appendix 1: Data table

Table 1.1: Context data

No	Borehole	Description
1	1,2,3	Concrete
2	4,5	Tarmac
3	2,3,5	Modern rubble and hardcore
4	1,4	Grey-brown silty clay
5	4	Yellow sandy clay

Appendix 2: Stratigraphic matrices

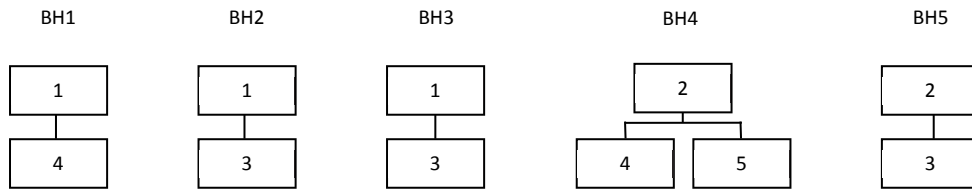
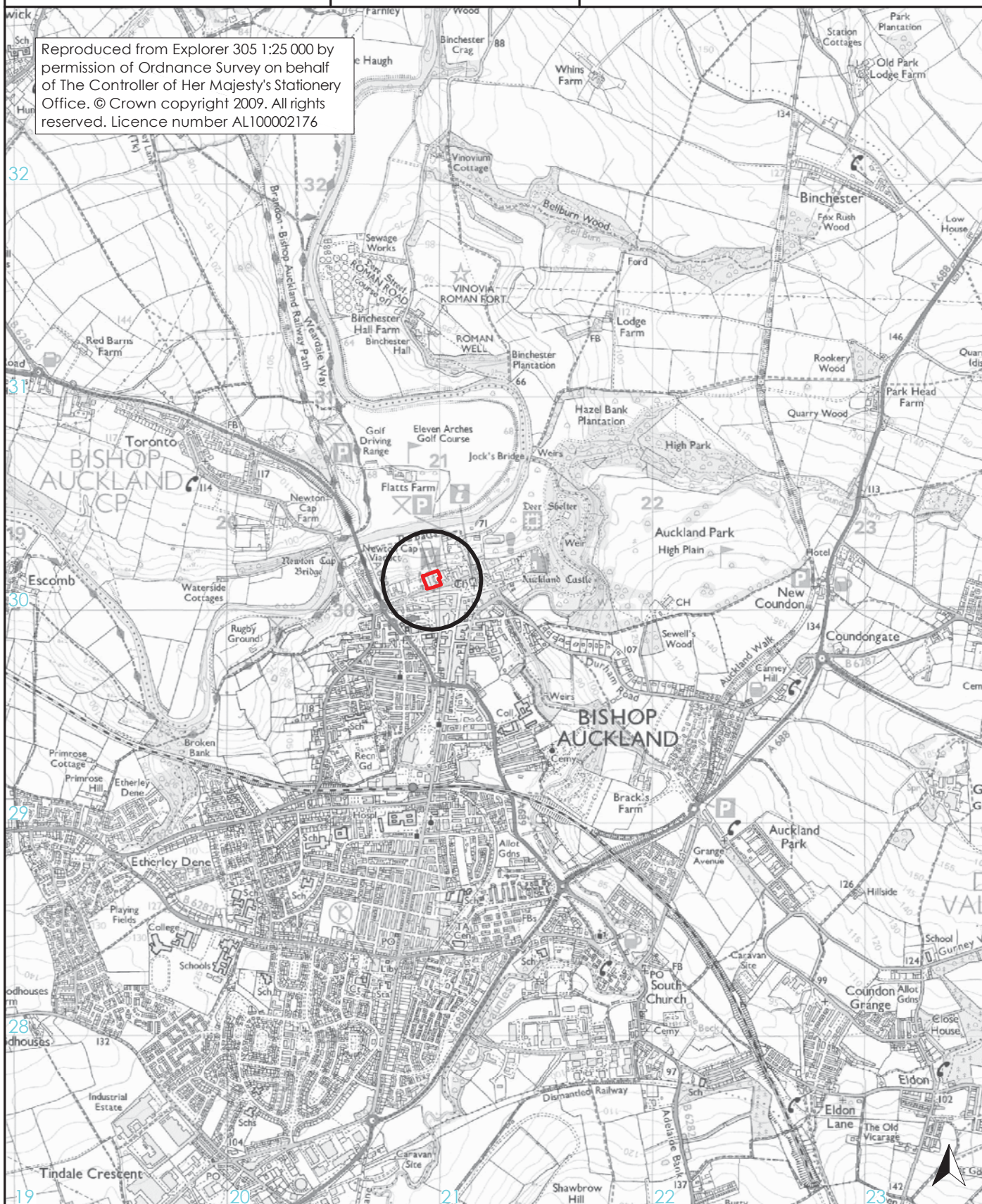


Figure 1: Site location

Reproduced from Explorer 305 1:25 000 by permission of Ordnance Survey on behalf of The Controller of Her Majesty's Stationery Office. © Crown copyright 2009. All rights reserved. Licence number AL100002176



site location

0 1km
scale 1:25 000 for A4 plot

Reproduction in whole or in part is prohibited without the prior permission of Durham County Council




on behalf of
Durham County Council

North Bondgate Car Park
Bishop Auckland
County Durham

archaeological monitoring
report 3476

Figure 2: Approximate borehole location



-  proposed development area
-  borehole
-  previous evaluation trench



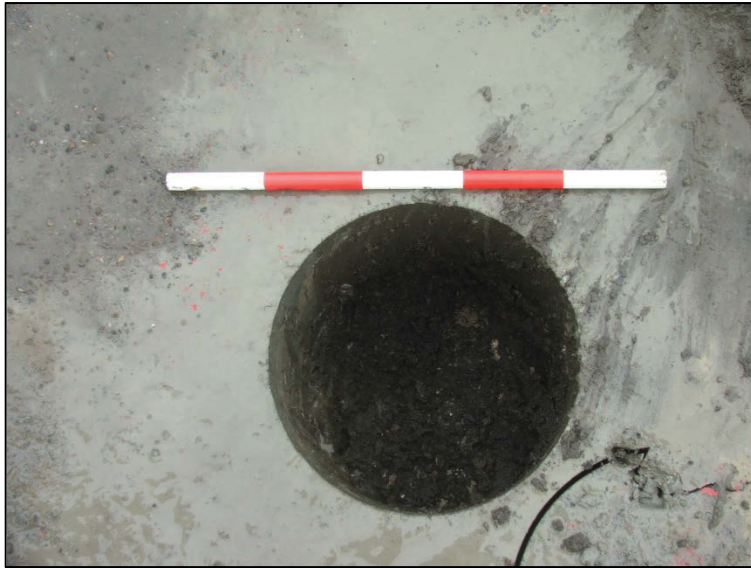


Figure 3: Borehole 1,
looking North



Figure 4: Borehole 2,
looking North



Figure 5: Borehole 3,
looking North



Figure 6: Borehole 4,
looking North



Figure 7: Borehole 5,
looking North