

Winter 1990
Vol. 6 No. 9
£1.25

London Archaeologist

**ROMAN
WATLING
STREET**

**LONDON'S
ROMAN
AMPHITHEATRE**

**PREHISTORIC
TRACKWAY
IN RAINHAM**

**BOOKS
DIARY
LETTER
MOSAIC
COMMENTARY**



Discover elephants in Trafalgar Square and hippos in the Thames ...

Prehistoric London

by Nick Merriman



120,000 years ago rhinoceroses and lions roamed the open grassland in Trafalgar Square while hippopotami wallowed along the marshy edges of the Thames. Elephant remains from Pall Mall and St James's Square were first reported in 1758 and over the last 200 years many more finds have been made.

This colourful book is the first general overview of prehistoric London to be published. Clearly written and very well illustrated with photographs and vivid reconstructions it will appeal to both historians and the interested general reader. Prehistoric London tells the

story of half a million years, expressing time in terms of generations as well as years BC. It follows amazing changes in landscape and human society, taking areas familiar to both Londoners and visitors to show how different they once were.

The book begins with ice-sheets expanding further and further south, pushing the River Thames into its present position, and ends with the arrival of the Roman legions. In between are Ice Age hunters camping by the Thames, forest hunters catching reindeer on Hampstead Heath and the first farmers hacking their fields from wild forest around Staines and Runnymede. As the landscape was tamed settlements of peasants and traders grew, Celtic-speaking chiefdoms developed and relations with the expanding Roman empire began.

A fascinating glimpse into the lives of the thousands of generations of people who have lived in the region we now call London.

Prehistoric London is published by HMSO for the Museum of London
ISBN 0 11 290447 5 50 pages, fully illustrated Price £4.95

To order your copy send this form to: HMSO Books (P9D), FREEPOST, Norwich NR3 1BR
(UK customers, no stamp needed)

Please send me _____ copies of *Prehistoric London* @ £4.95 ISBN 0 11 290447 5
I enclose a cheque for £_____ made payable to HMSO

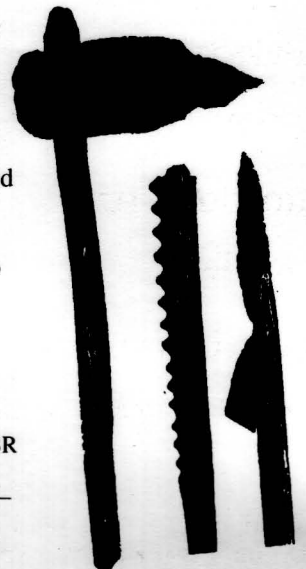
PLEASE COMPLETE IN BLOCK CAPITALS

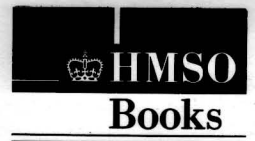
Name _____

Address _____

London Archaeologist

Postcode _____



**HMSO**
Books