

Editor
Clive Orton

Assistant Editor
Märit Gaimster

Features Editor
Becky Wallower

Secretary
Becky Wallower

Advertising
Patrizia Pierazzo

Managing Editor
Peter Rowsome

ISSN number
0024-5984

SUBSCRIPTIONS
£16 post free UK or Europe, £25 rest of world, for four issues per year

Contact
Dr Jo Udall
Membership Secretary
63 Dinmont House
Pritchard's Road
London E2 9BW

Subscribe or renew your subscription online at the CBA Online Shop:
www.britarch.ac.uk/shop

London Archaeologist
is published quarterly by the London Archaeologist Association
44 Tantallon Road
London
SW12 8DG

Registered charity number 262851

Printed by
Charlesworth Group
Wakefield

Website
www.londonarchaeologist.org.uk

Commentary

- 30 Commentary
Gromaticus

Features

- 36 **Access to archaeology:** More access, more records: a Greater London Historic Environment Record for all
Stuart Cakebread and Krystyna Truscoe report on how this huge resource is being expanded and brought up to date
- 54 **Access to archaeology:** Festival of British Archaeology 2011: discovery, creativity, spectacle
- 55 **Findspot:** Medieval fishing on the Isle of Dogs
Nathalie Cohen and Nick Stevens review the background to an ephemeral find from the foreshore

Research

- 31 PREHISTORIC SOUTHWARK
Excavations in Bermondsey shed further light on the prehistory of north Southwark
Jim Leary, Nick Branch and Louise Rayner
- 37 BRINGING LONDON'S ARCHAEOLOGY TO A WIDER PUBLIC
The work of the City of London Archaeological Trust
John Schofield
- 43 VALENTINES DAY
Archaeological investigations during the Valentines Mansion Restoration Project
James Young Langthorne
- 49 THE NEW ARMOURIES, TOWER OF LONDON
Building accounts reveal the history of a major building
Geoffrey Parnell

Letter

- 41 A reply about Brandon Place

Reviews

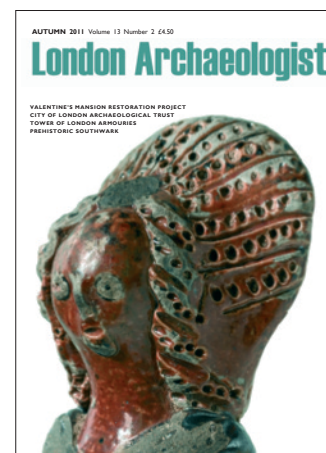
- 42 Books

News

- 56 Mosaic

Diary

- Inside back cover Diary



Front cover

The head and bodice of a figurine in early 16th-century Raeren stoneware from the excavations at Billingsgate Lorry Park in 1982; height 119mm. These figurines may have been toys. As noted in John Schofield's article on p 37 publication of excavations is a priority task for the City of London Archaeological Trust.
(photo © Andy Chopping/MOL)