

Editor

Clive Orton

Assistant Editor

Märit Gaimster

Features Editor

Becky Wallower

Secretary/Advertising

Becky Wallower

Managing Editor

Peter Rowsome

ISSN number

0024-5984

SUBSCRIPTIONS

£16 post free UK or Europe, £25 rest of world, for four issues per year

Contact

Dr Jo Udall

Membership Secretary

63 Dinmont House

Pritchard's Road

London E2 9BW

Subscribe or renew your subscription online at the CBA Online Shop:

www.britarch.ac.uk/shop**London Archaeologist**

is published quarterly by the

London Archaeologist Association

44 Tantallon Road

London

SW12 8DG

Registered charity number 262851**Printed by**

Charlesworth Group

Wakefield

Websitewww.londonarchaeologist.org.uk**Commentary**

86 Commentary

*Gromaticus***Features**100 *Museum issues*: How to save a museum?

Becky Wallower investigates whether Wandsworth Museum's establishment as a charitable body is proving to be a model for other threatened heritage organisations

109 *Findspot*: Milk Street *Mikveh*

Ian Blair and Bruce Watson discuss the significance of a unique remnant of London's medieval Jewish community

Research

87 CROYDON, CROCUS AND COLLYRIUM

How did Croydon get its name? From a Roman luxury crop or a little-known Germanic settler?

David Bird

91 TALBOT EDWARDS, HOLCROFT BLOOD, THE CROWN JEWELS AND THE ORDNANCE DRAWING ROOM

An account of some extraordinary goings-on and their consequences at the Tower of London in the 17th century

Geoffrey Parnell

95 A STUDY OF THE RIVER WALBROOK THROUGH ROMAN LONDON

A reconstruction of the flow of the Walbrook throughout the Roman period

Tony Taylor

102 AN IRON AGE AND EARLY ROMANO-BRITISH FARMSTEAD AT THE WAR MEMORIAL HOSPITAL, CARSHALTON

New excavations expand our knowledge of the rural settlement of London's southern hinterland

*Douglas Killock***Letter**

99 Graham Dawson replies to Bruce Watson on Saxon Southwark

Reviews

110 Books

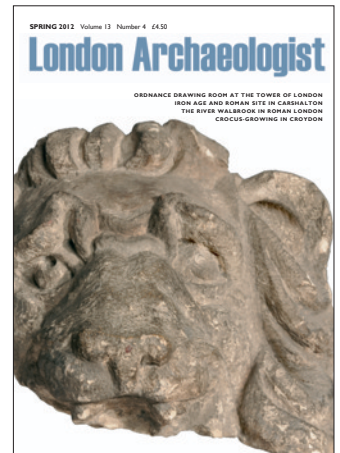
News

112 Mosaic

Diary

Inside back cover

Diary

**Front cover**

A lion's head from the historic collection of St Paul's Cathedral, probably from the Inigo Jones restoration, perhaps from the west front (breadth 310mm). Warwick Rodwell, Consultant Archaeologist at Westminster Abbey, reviews the definitive work on St Paul's before Wren by the Cathedral's Archaeologist, John Schofield, on page 110.

(© Andy Chopping /Museum of London Archaeology)