

The London Archaeological Prize 2016

Now in its twelfth year, this biennial publication prize aims to promote the highest standards in writing about London's archaeology.

If you've read – or indeed written – a great piece of work over the past couple of years, why not enter it for this prestigious award?

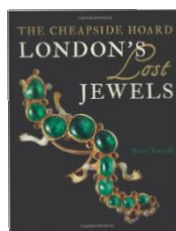
£250 + certificate

will be awarded to the best publication of 2014 or 2015. A second prize of £100 plus certificate will also be awarded if enough entries of high standard are received. If possible, the winning author(s) will be interviewed for an article to appear in *London Archaeologist*.

- ◆ **Anyone can make a nomination** – whether author, publisher or appreciative reader
- ◆ **Any printed or digital publication related to London is eligible:** entries have included monographs, popular books, blogs, conference papers and articles; for audiences from children to academics; by authors from professional and non-professional sectors
- ◆ **A winning entry**, as judged by the panel of judges appointed by *London Archaeologist*, will deliver quality and excellence to its intended readers, and will meet the aims it sets out to achieve.

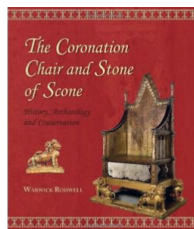
2014 London Archaeological Prize

The results



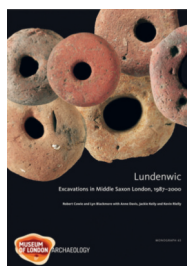
WINNER:

LONDON'S LOST JEWELS
HAZEL FORSYTH



RUNNER UP:

**THE CORONATION CHAIR
AND STONE OF SCONE**
WARWICK RODWELL



RUNNER UP:

LUNDENWIC
**ROBERT COWIE WITH
ANNE DAVIS, JACKIE KEILY
AND KEVIN RIELLY**

How to enter

For full rules and official nomination forms go to the LA website londonarchaeologist.org.uk or contact Al Telfer (details below). Alternatively, send written nominations to her, giving:

- details of publication and publisher
- name and contact details of nominator
- reason the publication is worthy of the prize (in 100 words).

No copies of the publication should be sent as these will be supplied by publishers of the short listed publications.

Request nomination forms from, and return to:

Al Telfer
Coordinator
London Archaeological Prize
Mortimer Wheeler House
46 Eagle Wharf Road
London N1 7ED
Email: atelfer@mola.org.uk

**NOMINATIONS MUST BE
RECEIVED BY 16 MAY 2016.**