

**Joint Editors**

Jenny Hall and Diana Briscoe

**Features Editor**

Becky Wallower

**Secretary/Advertising**

Becky Wallower

**Marketing Manager**

position vacant

**Managing Editor**

Peter Rowsome

**ISSN number**

0024-5984

**SUBSCRIPTIONS**

£16 post free UK or Europe, £25 rest of world, for four issues per year

Contact

Dr Jo Udall

Membership Secretary

63 Dinmont House

Pritchard's Road

London E2 9BW

Subscribe or renew your subscription

online at the CBA Online Shop:

[https://shop.britarch.ac.uk/Other-](https://shop.britarch.ac.uk/Other-subscriptions/London-Archaeologist-Subscription/)

[subscriptions/London-Archaeologist-](https://shop.britarch.ac.uk/Other-subscriptions/London-Archaeologist-Subscription/)

[Subscription/](https://shop.britarch.ac.uk/Other-subscriptions/London-Archaeologist-Subscription/)

**London Archaeologist**

is published quarterly by the

London Archaeologist Association

44 Tantallon Road

London

SW12 8DG

**Registered charity number** 262851

**Printed by**

Charlesworth Group

Wakefield

**Website**

[www.londonarchaeologist.org.uk](http://www.londonarchaeologist.org.uk)



## Commentary

282 Gromaticus

## Feature

294 **Exhibition Preview:** Cross sections

A new exhibition opening at Museum of London Docklands in February puts both the extensive archaeology and the engineering of the massive Crossrail project into perspective. Curator Jackie Keily spoke to Becky Wallower.

## Research

283 BRONZE AGE LANDSCAPE OF GREENWICH PENINSULA

Reconstructing the prehistoric wetland landscape through geoaerchaeology

*Mary Nicholls with Nigel Cameron, Rob Scaife, Karen Stewart and John Whittaker*

289 FROM PREHISTORIC ENCLOSURE TO LANDSCAPED PARKLAND IN CARSHALTON

Excavation of landscape features in central Carshalton

*Nicola Powell and Simon Carlyle*

296 ARCHAEOLOGY OF THE GREAT FIRE CONSIDERED

What distinctive features and research themes have emerged from Great Fire archaeology?

*Nigel Jeffries*

301 INVESTIGATIONS IN THE BROADWAY, STRATFORD

Developments from medieval village to modern high street

*Joanna Taylor with Chris Jarrett,, Kevin Hayward, Märit Gaimster, Lynn Keys, Kevin Rielly and Frank Meddens*

## Letter

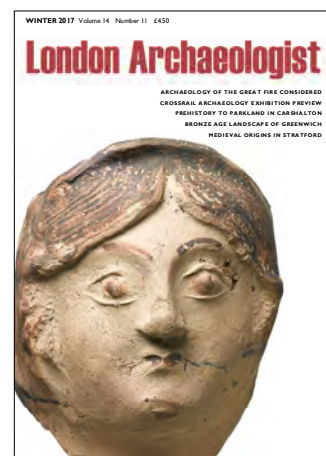
288 Letter to the Editor

## News

308 Mosaic

## Diary

Inside back cover Diaries



### Front cover

Part of a rare Nene Valley parchment type ware face flagon found during the Crossrail excavations at Liverpool Street. It was found in a deposit dated to the later 3rd century and has a woman's face skilfully depicted using brown paint. It is seen below during the excavation.



Cover photo Maggie Cox  
both pictures © Crossrail Ltd