



LAMAS

London & Middlesex Archaeological Society

*promoting London's unique heritage
and historic environment*



With over 600 personal members, including many archaeologists, historians and conservationists, LAMAS plays a leading role in the protection and preservation of London's heritage. Through its publications, lectures and conferences the Society makes information on London's past accessible to a wide audience.

As a member of LAMAS, you receive a copy of the widely respected *Transactions* each year, and also three issues of the *Newsletter*. In addition, you have the opportunity to attend two full day conferences and enjoy a programme of lectures from October to May.

*To find out more, and for details on how to
join us, visit our website:*

www.lamas.org.uk

*Just Published by The Enfield
Archaeological Society*

FIRST STOP NORTH OF LONDINIUM: THE ARCHAEOLOGY OF ROMAN ENFIELD AND ITS ROADLINE SETTLEMENT

Martin J. Dearne

with Geoffrey Gillam† and Roger Dormer



342 pages 137 figures 19 plates **£30 + £3.50 p&p**

Available from 9 Junction Rd., London
N9 7JS (cheques payable to the Enfield
Archaeological Society) or order at
www.enfarchsoc.org using PayPal

London Archaeologist

ANNUAL LECTURE and AGM

Expect the unexpected
Fenchurch Street from the first century
to the First World War

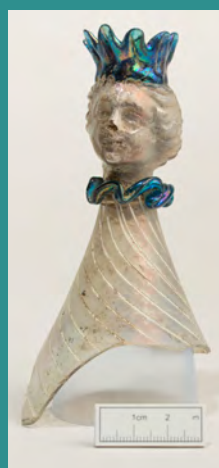
Neil Hawkins

Senior Archaeologist
Pre-Construct Archaeology

Presenting our 2017 Annual Lecture, Neil Hawkins reveals for the first time details of the important Roman site recently excavated by PCA in the City of London.

At the location of several incarnations of the Ironmongers' Hall in Fenchurch Street, a Roman road emerged, with late 1st- to 2nd-century clay-and-timber buildings, tessellated floors, later Roman structures and exceptional finds. Medieval and later strata also added important evidence for the eastern City.

**Hear all about it on 11 May 2017 at the Institute of
Archaeology. Entry is free and all are welcome.**



6.30pm: wine reception ~ 7.00pm: AGM and Annual Lecture ~ Institute of Archaeology 31-34 Gordon Square, London WC1