

**Joint Editors**

Jenny Hall and Diana Briscoe

**Features Editor**

Becky Wallower

**Secretary/Advertising**

Becky Wallower

**Marketing Manager**

position vacant

**Managing Editor**

Peter Rowsome

**ISSN number**

0024-5984

**SUBSCRIPTIONS**

£16 post free UK or Europe, £25 rest of world, for four issues per year

**Contact**

Dr Jo Udall

Membership Secretary

63 Dinmont House

Pritchard's Road

London E2 9BW

Subscribe or renew your subscription

online at the CBA Online Shop:

[https://shop.britarch.ac.uk/Other-](https://shop.britarch.ac.uk/Other-subscriptions/London-Archaeologist-Subscription/)

[subscriptions/London-Archaeologist-](https://shop.britarch.ac.uk/Other-subscriptions/London-Archaeologist-Subscription/)

[Subscription/](https://shop.britarch.ac.uk/Other-subscriptions/London-Archaeologist-Subscription/)

**London Archaeologist**

is published quarterly by the

London Archaeologist Association

44 Tantallon Road

London

SW12 8DG

**Registered charity number 262851**

**Printed by**

Charlesworth Group

Wakefield

**Website**

[www.londonarchaeologist.org.uk](http://www.londonarchaeologist.org.uk)



**Commentary**

310 Gromaticus

**Feature**

321 *Author, Author... : New Foundations*

The monograph on Tabard Square that won the 2016 London Archaeological Prize transforms our understanding of Southwark's prehistoric and Roman archaeology. Becky Wallower interviewed principal author, Douglas Killock, and monograph editor and contributor, Victoria Ridgeway, who put together a publication to match the importance of the site.

**Research**

311 LONDON CHARTERHOUSE AND THE GLASSHOUSE

YARD GENERAL BAPTIST BURIAL GROUND

Excavations at Therese House in Glasshouse Yard, EC1A, of monastic cells and a Nonconformist burial ground

*Andy Daykin, with Michael Henderson*

317 BRONZE AGE ACTIVITY AT GORESBROOK VILLAGE,

DAGENHAM

Ritual activity in East London forming part of a wider landscape of settlement and subsistence

*Catherine Douglas*

323 ANIMAL BONES AND BROKEN OBJECTS: SYMBOLIC

DEPOSITION AT CARSHALTON

Excavation of ritual pits containing animal bones and broken objects at Queen Mary's Hospital, Carshalton

*Andrew Powell, with contributions by Alistair Barclay, Lorrain Higbee, Andrew Fitzpatrick and Rachel Seager Smith*

328 PRE-FIRE BURIAL GROUND OF ST SEPULCHRE WITHOUT

NEWGATE

Excavations at 5–7 Giltspur Street, City of London, revealing the early development of the church's burial ground

*Adrian Miles and Don Walker, with Lyn Blackmore and Karen Stewart*

**Obituary**

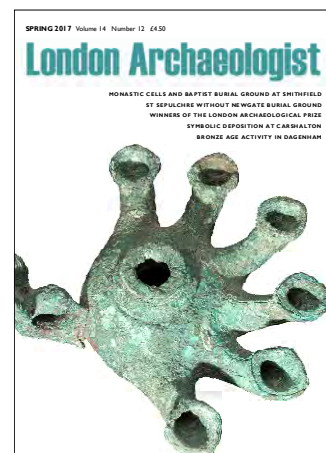
316 Stephen Humphrey

**News**

336 Mosaic

**Diary**

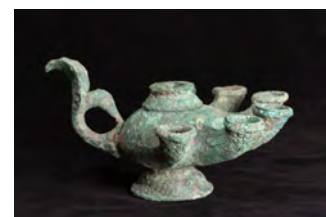
Inside back cover



**Front cover**

This small copper-alloy lamp was found during recent excavations by Pre-Construct Archaeology on a site in the City. It had been buried upside down in a small pit dating to the late first or early second century AD.

Measuring a little over 20cm from handle to tip, this lamp appears to be unique to Britain. Whilst Roman copper-alloy lamps with a single nozzle are known from the Province, as are examples of ceramic lamps with multiple nozzles, this striking lamp is most easily paralleled in Italy. It seems probable that this was an early import to Britain from the continent. The recovery of a strigil from the same small pit suggests the lamp may well have helped to illuminate a first-century bath house.



Cover image and side view above: Strephon Duckering both photos © Pre-Construct Archaeology