

Mosaic

A princely outlook

Cast your mind back 15 years and you would have read with interest about MOLA's excavation of the grave of the so-called Prittlewell Prince and the wealth of finds that had been buried with him within a wooden structure. The tomb housed some 40 rare artefacts including a lyre, decorative glass beakers, gold coins, cauldrons, drinking horns and a painted wooden box, thought to be the only surviving British example of painted Anglo-Saxon woodwork. Two gold foil crosses, symbols of Christianity and also unique in England, may have been placed on the eyes of the deceased, while a gold belt buckle seemed to have been specifically made for the burial. Every object had been carefully positioned in the tomb.

Research, however, has been ongoing since 2003 and such techniques as carbon dating have now dated the construction of the wooden structure to between AD 575 and 605, casting doubt on it being the tomb of Saebert, the Saxon king of Essex (he died in AD 616) and thoughts have now moved towards it perhaps being the tomb of Saebert's brother, Seaxa.

Some finds went on temporary display at the Museum of London soon after their discovery. They are now on permanent display at Southend Central Museum. MOLA have created a website for Prittlewell with a guide to the objects in the tomb and the story of its discovery (www.prittlewellprincelyburial.org) and the excavation report has now been published.

The Rose Playhouse Gala

Southwark Cathedral has hosted the 30th anniversary of the discovery of the remains of the Rose Playhouse with a fund-raising gala for its re-display (see page 261 for more details). Harvey Sheldon, Rose Chairman, talked about the excavation and future plans and celebrity patrons from the acting fraternity attended with others donating prizes for the auction.

Wherefore art thou, Romeo?

Looking over the adjoining churchyard, if one believes the detailed research by Geoff Marsh, one-time samian specialist, Museum of London curator and long-time Director of the Department of Theatre and Performance at the V&A. He has revealed that William Shakespeare, while penning *Romeo and Juliet* between 1597–8, lived in one of a cluster of properties that overlooked the churchyard of St Helen's Church, close to Liverpool Street station. Evidence suggests that he lived in a building at 35 Great St Helen's, now occupied by an office block.

Putney prehistoric discoveries

Some may remember the discovery of the human frontal bone from the Putney foreshore earlier this year. An early crossing point on the Thames, the Putney foreshore has been studied for many years, most notably by archaeologist, Pam Greenwood, and a mudlarker, the late Bob Wells.

Finds have been recorded on to the PAS database by Stuart Wyatt, Finds Liaison Officer. He reports that he has been working with Pam Greenwood, local mudlarks and the Thames Discovery Programme, to investigate the Putney foreshore, particularly in the light of the recent discoveries of that frontal bone from a young male (18 years old or later) dating to c. 3645–3525 BC, (currently on display in the Museum of London, see *image*) and a partial mandible



© Museum of London

which returned a date of 760 BC. An additional six bones have since been discovered from several different individuals.

The majority of these finds are contained in a relatively small area of the foreshore with a marked increase in recent months. This may be due to the recent increase in river traffic, which has led to an accelerated erosion of the foreshore and the subsequent exposure of these early deposits. Fragments found previously have had a mid-Iron Age date range of 390–200 BC. Incomplete skulls have been the only bones recovered to date, but, during survey work, a left humerus and a right fibula have since been found.

Other notable finds include almost complete vessels and large sherds of Post-Deverel Rimbury 'plainware' pottery (PAS record: LON-EAB1AE), dating to before 800 BC; an assemblage of lithic blades, tools and debitage dating from the late Mesolithic to early Neolithic interface; and several important Iron Age artefacts including a short sword (PAS record: LON-CCEF56), still within its scabbard, as well as a La Tène type 1Bb brooch (PAS record: LON-CEF48E).

An ongoing study will continue to try and seek out why it was a focus for people and their practices over many early periods.

Highgate Roman kiln

The Friends of Highgate Roman Kiln group with the Museum of London, Bruce Castle Museum and the City of London (who own Highgate Wood) are hoping to seek both lottery and local funding, in order to return the kiln to the woods. They hope to extend the Highgate Wood information hut to house the kiln with teaching space for local schools to learn about the Romans in Britain.

This plan, which has been mooted ever since the kiln was excavated in 1970 and the remains housed in first the Horniman and then the Bruce Castle Museum over the years with the intention of getting it on display.

Despite the good intentions, the best surviving example of a Roman kiln from Greater London has remained in store. Harvey Sheldon, one of the original excavators, has been a strong advocate over the years and various projects, including local teens building trial kilns and firing pots in 2010–11, caused press and political interest, but no concrete plans resulted. It is to be hoped that this time it proves successful.

LAMAS: Research Fund

LAMAS has been offering a research fund since 2005 for research projects to further knowledge of London's history and archaeology. This year it is also open to members of affiliated societies. Full details may be found on the LAMAS website with the fund's terms and conditions or obtained from the Hon

Secretary, Karen Thomas. The deadline for submissions is 30 September 2019.

Grants from CoLAT

The City of London Archaeological Trust (CoLAT) invites applications for small to medium grants to support archaeological work in the City and its environs, as in previous years. Projects funded in recent years have included a poster on imported pottery found at the Tower of London; spoons from *Londinium*; Jewish food and cultural identity in medieval London; experimental work on Roman lamps from London, and London's 18th-century porcelain industry.

The grants will be for one year only from 1 April 2020, and this year's deadline for applications will be **Friday 20 September 2019**. The meeting of CoLAT to decide the grants will be in early December.

Applicants should study the guidelines with care. These are available on the CoLAT website: www.colat.org.uk. Don't use anything except this year's application forms.

Further guidance may be obtained from the Secretary, John Schofield. His email address is: john@jschd.demon.co.uk

Diary

Please note that most societies anticipate a donation for attendance by non-members.

July

15 (8.00 pm) The Streatham Society. 'St Pancras Station at 150' by Lester Hillman. The Woodlawns Centre, 16 Leigham Court Rd, SW16 2PJ.

17 (7.30 pm) Islington Archaeological & Historical Society. 'The greening of Finsbury' by James Dunnnett (RIBA). Islington Town Hall, Upper St, N1 2UD.

17 (7.45 pm) Leyton & Leytonstone Historical Society. 'Rubbish or Ritual: treasure in the Thames' by John Clark. St John's Hall, off High Rd (by the entrance to Matalan), Leytonstone, E11 1HH.

18 (7.30 pm) Camden History Society. '333 years of Great Ormond St' by Alec Forshaw (author). Camden Local Studies & Archives Centre, Holborn Library, 32–38 Theobalds Rd, WC1X 8PA.

19 (7.00 pm) City of London Archaeological Society. 'Medieval Mass Burial at St Mary Spital' by Don Walker (Museum of London). St Olave Hart Street, 8 Hart St, EC3R 7NB.

24 (2.30 pm) East Surrey Family History Society (Lingfield branch). 'The 1910 Lloyd George Domesday Survey: a hidden gem for historians with intricate detail about property on the eve of WWI' by Paul Blake. Lingfield & Dormansland Community Centre, High St, Lingfield, RH7 6AB.

25 (7.30 pm) London Westminster & Middlesex Family History Society. 'HS2 and the Archaeology of St James's Gardens' by a member of HS2 Archaeology Team. Camden Local Studies & Archives Centre, Holborn Library, 32–38 Theobalds Rd, WC1X 8PA.

August

15 (8.00 pm) West Middlesex Family History Society. 'The History of Brookwood

Cemetery' by John Clarke. St John's Centre, St John's Rd, Isleworth, TW7 6RU.

September

2 (8.00 pm) The Streatham Society.

'Architectural History of our Underground Stations' by Edmund Bird. The Woodlawns Centre, 16 Leigham Court Rd, SW16 2PJ.

3 (7.15 pm) Lamorbey & Sidcup Local History Society. 'The History of Bethnal Green' by Chris Burton. St Lawrence's Hall, Hamilton Rd, Sidcup, DA15 7HB.

4 (6.00 pm) Docklands History Group. 'Thames Sailing Barges: a history and a future' by David Gibson (Sailing Barge Trust). Museum of London Docklands, West India Quay, (off Hertsmere Rd), E14 4AL.

4 (7.30 pm) London Westminster & Middlesex Family History Society. 'The History of Enfield's Markets, Fairs and Festivals' by Joe Studman. St Paul's Centre, 102a Church St, Enfield, EN2 6AR.

4 (8.00 pm) Orpington & District Archaeological Society. 'Street Furniture (19th and 20th century drains and footway covers, etc) by Richard Buchanan, Woolwich & District Antiquarian Society. Christ Church (UR), Tudor Way, Petts Wood, BR5 1LH.

13 (8.00 pm) Enfield Archaeological Society. 'St James Gardens Excavations and the HS2 Project' by Caroline Raynor (Principal Archaeologist, HS2). Jubilee Hall, 2 Parsonage Lane, Enfield, EN2 0AJ.

23 (7.45 pm) Croydon Natural History & Scientific Society. 'The life and times of Old Palace' by Janice Barter. East Croydon UR Church, Addiscombe Grove, CR0 5LP.

October

7 (8.00 pm) The Streatham Society. 'On the Waterfront: Lambeth's changing riverside' by Alan Piper. The Woodlawns Centre, 16 Leigham Court Road, SW16 2PJ.

10 (8.00 pm) Kingston Upon Thames Archaeological Society. 'Recent Finds from Surrey' by Dr Simon Maslin (Surrey Finds Liaison Office, PAS). Surbiton Library Hall, Ewell Road, Surbiton, KT6 6AG.

11 (8.00 pm) Enfield Archaeological Society. 'Finding Enfield's Fallen' by Martin Lambert. Jubilee Hall, 2 Parsonage Lane, EN2 0AJ.

11 (8.00 pm) Richmond Archaeological Society. 'Recent excavation in London' by Jane Sidell, Historic England. Vestry Rooms, 21 Paradise Road, Richmond, TW9 1SA.

Conferences

20 July (9.45 am–4.00 pm) Kingston upon Thames Archaeological Society. 50th Anniversary Conference. It will include an overview of excavations by the Society and other professionals, from Bronze Age to 'yesterday'. Surbiton Library Hall, Ewell Rd, Surbiton, KT6 6AG. Cost in advance: £10 members, £12 non-members, £15 on door. Booking form: <http://tinyurl.com/y6bspk4b>

Walks

24 July 5.30pm LAMAS Lates. Walking tour of Dickensian London with a guide from the Dickens Museum. Meet at the Dickens Museum, 48 Doughty St, WC1N 2LX for a 90-minute walk. £10 for members, £12.50 for non-members.

25 August (2.00 pm) Croydon Natural History & Scientific Society. 'Merstham Village and Gatton Park' led by Paul Sowen.

28 August (probably 6.00 pm) LAMAS Lates. Walking tour of the Foreshore led by Elliott Wragg, in either Wapping or Rotherhithe. Exact details to be confirmed (see www.lamas.org.uk/lamas-lates.html). £10 for members, £12.50 for non-members.

Download a useful leaflet with details of dozens of guided local history walks in south London from <http://tinyurl.com/y5oeeamg>

Practical archaeology

AOC Archaeology. Contact Melissa Melikian, Post-Excavation Manager (020 8843 7380).

London Archaeological Archive & Research Centre. Contact Adam Corsini, Archive Manager (020 7566 9317).

Croydon & District. Contact Jim Davidson, 8 Brentwood Rd, South Croydon, CR2 0ND.

Borough of Greenwich. Contact Greenwich Heritage Centre (020 8854 2452).

Hammersmith & Fulham. Contact Keith Whitehouse (020 7385 3723).

Kingston. Enquiries to 020 8546 5386.

MOLA. Contact Karen Thomas, Head of Archive (020 7410 2228).

Pre-Construct Archaeology. Contact Mārit Gaimster, Finds Manager (020 7639 9091).

Surrey. Enquiries to Rob Poulton, Archaeological Unit Manager, Surrey History Centre (01483 594 634).

2019 CBA Festival of Archaeology

This year the theme is archaeology, science and technology or **#ArchaeoTech**. Find out more and discover events near you by visiting festival.archaeologyuk.org

13 Join the launch event at the British Museum, with members of Time Team, for a day of activities for all the family.

13 and 14 Join museum staff and *London Archaeologist* committee members in a fun-packed programme of children's activities at the Museum of London, inspired by the museum's exhibition 'Beasts of London'.

13, 20 and 27 (at 11.00, 12.00 and 1.00) Tour of Billingsgate Roman House and Baths. Book online via the Festival website.

14 (1.30 pm–4.30 pm) Bruce Castle Museum. Get hands-on in the museum galleries. Artefact handling and craft activities for children aged 5–10 years old.

17 (11.00 am–6.30 pm) Museum of Wimbledon. Discover all about ancient Wimbledon, and try identifying finds.

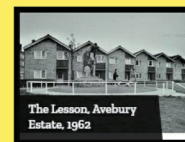
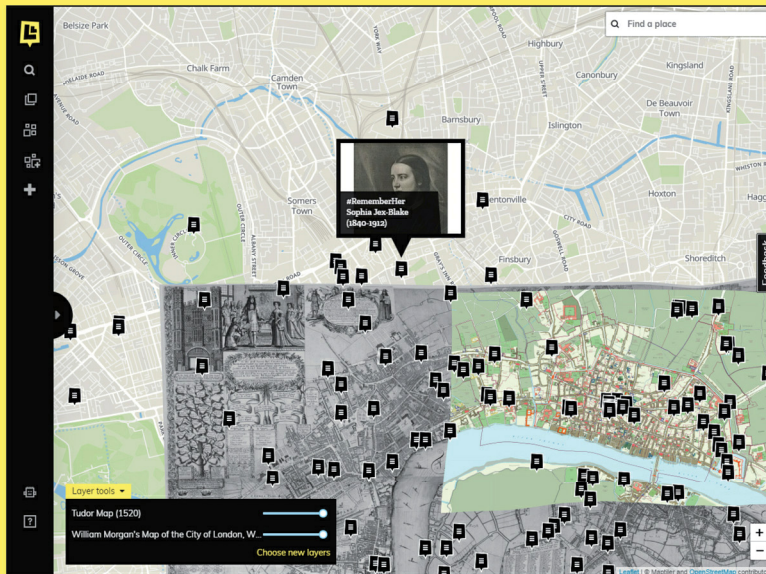
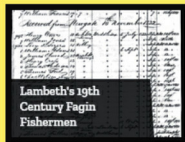
20 (10.30 am–12.30 pm) Benjamin Franklin House. Bones in the Basement! Best for ages 8–11, but younger siblings are welcome. Book via the Festival website.

27 (10.30 am–3.00 pm) All Hallows by the Tower Church. *Londinium: the Roman City*. A walk beginning in their Crypt Museum and ending at the Museum of London. No need to book, costs £10 per person and will probably take 2.5–3 hours.

27 (1.00 pm–2.30 pm) Gunnersbury Park & Museum. Roman & Medieval West London. Exploring the People and Place Gallery, original artefacts will be available for you to handle. Tickets £10, including refreshments, booking via festival website.

www.LayersofLondon.org

Collectively mapping the stories and heritage of London



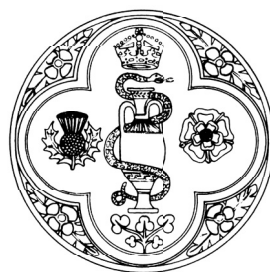
Explore and contribute to historic maps of London

layersoflondon

layersoflondon@london.ac.uk



Layers of London



Royal Archaeological Institute

The Royal Archaeological Institute's interests cover all aspects of archaeological, architectural and landscape history of the British Isles. It provides a forum for members with interests in these and related fields.

Membership includes

- ◇ *The Archaeological Journal*
- ◇ Monthly lectures (October to May) at Burlington House, Piccadilly
- ◇ Access to expert-led field visits, research grants and early bird discount to our annual conference
- ◇ Two Newsletters a year
- ◇ Privileged access to the Society of Antiquaries' Library

Full annual membership is £35 by direct debit and £20 by direct debit for those under 26. To join and to find out more, go to www.royalarchinst.org