

WINTER 2021

Volume 16 Number 3 £4.50

London Archaeologist

EAST LONDON'S CIVIL WAR DEFENCES REVIEWED

THE LOST EAST WING OF ST JAMES'S PALACE

EARLY MEDIEVAL FORESHORE DISCOVERIES

FISHING IN THE MEDIEVAL THAMES

FLINT AND FIRE



LOCATION MAP



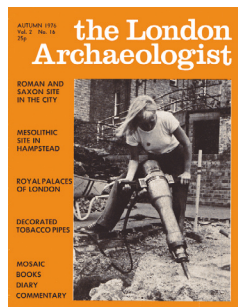
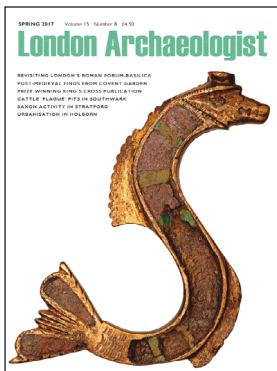
Back issues and binders

Binders



- suitable for both original and current size magazines
- dark blue with gold title
- holds complete volume of 12 issues, 3 Round-ups and an index
- £8 each in UK (£10 elsewhere)

Back issues



Vols 11–08 to 14–12 (and earlier issues where available):
£4 per issue in UK, £5 elsewhere

from Vol 15–01: £4.50 per issue in UK, £5.50 elsewhere

All prices include postage & packing

Please send cheque with order to:

The Membership Secretary
63 Dinmont House
Pritchard's Road
London E2 9BW

London Archaeologist

Joint Editors

Jenny Hall and Diana Briscoe

Secretary

Rosalind Morris

Communications Officer

Helen Johnston

Managing Editor

Peter Rowsome

ISSN number

0024-5984

SUBSCRIPTIONS

For four issues per year:

£16 post free UK and EU

£12 under 25s UK and EU

£25 rest of world

Contact

Dr Jo Udall

Membership Secretary

63 Dinmont House

Pritchard's Road

London E2 9BW

Subscribe or renew your subscription

online at the CBA Online Shop:

<https://shop.britarch.ac.uk/Other-subscriptions/London-Archaeologist-Subscription/>

London Archaeologist

is published quarterly by

The London Archaeologist Association

117 Cholmley Gardens

London NW6 1UP

Registered charity number 262851

Printed by

Charlesworth Press

Wakefield, WF2 9LP

Website

Visit our website:

www.londonarchaeologist.org.uk

To contact us by email, please write to:

londonarchaeologistmagazine@gmail.com



@LondonArchaeo

Commentary

58 Gromaticus

Features

68 **Just the job:** Flint and fire
Dr James Dilley is finding new ways of bringing the past to life with experimental archaeology. Becky Wallower found out more, via Zoom

78 **Findspot:** Finds from the foreshore
Lockdown in 2020 curtailed foreshore work, but provided Stuart Wyatt with the opportunity to start researching some interesting early medieval discoveries

Research

59 EAST LONDON'S CIVIL WAR DEFENCES REVIEWED
Research has uncovered significant issues that will re-write the history of the Civil War Defences in London
Peter Mills

71 FISHING IN THE MEDIEVAL THAMES
Lead fishing net weights, from a medieval ship sunk near Blackfriars, have shed light on fishing net technology and its connections to the economy and environment
Lucy Granger

80 THE LOST EASTERN WING OF ST JAMES'S PALACE
Archaeological investigations have uncovered traces of the lost part of this major royal residence
Stacey Amanda Harris

Book review

77 Review

News

84 Mosaic

Virtual visits

Inside back cover



Front cover

A basket-hilted sword with a straight single-edged blade dating from 1636–45, and inscribed along the length 'ME(FEC)IT HVNSLOE' or 'Made in Hounslow'. The basket-hilt has a guard decorated with a featherwork pattern lined with red cloth.

Before the English Civil War, the Hounslow sword factory produced thousands of swords, and also ground and polished blades of various types, many of them identified with the 'Me fecit Hunsloe' inscription.

Such was the factory's reputation that in April 1643 Sir William Waller, a leading parliamentarian general, wrote to the authorities asking specifically for '200 Hounslow Blades'. In 1645, Parliament ordered a further 3,200 swords and belts at five shillings each (**London's Civil War Defences are re-assessed by Peter Mills in this issue, see page 59**).

The sword is one of the objects planned for display in the new Museum of London at Smithfield.

Photo: © Museum of London

