

Mosaic

At the core of Westminster

A cherry-picker and other methods have been used in Westminster Hall to be able to try and date the oak timber trusses, rafters and other elements of the medieval roof. Five timbers were sampled by Dan Miles, of the Oxford Dendrochronology Laboratory, who tells the story of the work and results in *British Archaeology* (May/June 2021).

Unexpectedly, some of these timbers still had some bark. The extensive tree ring counts revealed that all the timbers came from huge mature trees which had been grown in the same area of Hampshire. The tree-ring analyses dated the construction work to 1185–1393.

Persistent Ordnance Survey

OS has created a new system of persistent identifiers – every property in England, Scotland and Wales now has a 12-digit Unique Property Reference Number (UPRN). It can be imprecise as it does not rely on the more detailed grid reference, but since the tables of UPRN were published in June 2020 many organisations are adopting them, so that as the project continues it may be possible to use the UPRN to search the records of a particular place or site online from a number of sources.

This ties in nicely with an AHRC policy Towards a National Collection (TaNC) where research bodies have applied for funding to use innovative digital technology to connect some of the UK's numerous stand-alone databases. Core elements of any TaNC project must include community engagement and make use of such national record-holding institutions as the ADS.

Treasure Act

A metal-detectorist from Essex is the first person in England to be convicted for failing to report Treasure. He had discovered 933 Iron Age gold staters, the largest find of its kind made in Britain, in September last year.

Although he correctly reported the finds to the landowner, who then notified the local Finds Liaison Officer, he held back and was accused of stealing some 22 staters and one quarter stater, estimated to be worth about £10,000. He received an 18-month community order, was ordered to pay £200 and had to surrender his metal detector, which was subsequently destroyed.

Southwark Heritage Centre

The new Southwark Heritage Centre and Walworth Library in the Walworth Road opened in April. As well as a full library, there will also be temporary exhibitions featuring artefacts from Southwark's Heritage collections.



Dissecting the evidence

Archaeologists from L - P : Archaeology and Icenis Projects have been excavating the extensive remains of the Covent Garden Workhouse, a Grade 2 listed building that is being converted for residential use by University College London Hospitals. The excavation is ongoing.

Over 900 burials so far have been excavated in the cemetery to the rear of the workhouse, with frequent examples of body dissection. Two bodies, in particular, seem to have had their major arteries injected with a liquid that consisted of a mix of lead carbonate, pigments and pine resin. The result of this procedure was to show up and demonstrate blood vessels during a teaching dissection.



Images © L - P : Archaeology/Icenis Projects

Butser house completed

Butser has a new building to celebrate. The Horton House is a reconstruction of a large Neolithic building based on a rare discovery made at Kingsmead Quarry near Horton in Berkshire in 2012 by Wessex Archaeology. The original house is believed to date to 3800-3600 BC.

Butser, like many other museums and heritage centres, has suffered with an 80% drop in income. To combat this, they have launched **Butser Plus**, which opens up the world of Butser Ancient Farm. In return for a joining fee, members can access behind-the-scenes video content sharing the story of the unique heritage site, alongside ancient skills and knowledge to escape into the past.

Wimbledon Museum

The Wimbledon Society's Museum of Wimbledon at 22 The Ridgway in Wimbledon Village is currently closed for refurbishment. All the objects have been packed up and the room stripped.

Plans are being drawn up for a new display with fund-raising underway. It has been estimated that the design and build cost will be about £180,000 and it is hoped to have a grand re-opening at Easter 2022.

Time Team

Love them or hate them – Time Team are coming back! They have announced a 2021 dig at a huge Roman villa located on the Broughton Estate in Oxfordshire, belonging to the Fiennes family, and another on a site in Cornwall, which will include excavating a fogou. Since the last series, 1.5 million viewers a month have continued to watch the Time Team Classics YouTube channel in 41 countries worldwide.

The new programmes will premiere on YouTube, with additional behind-the-scenes content, and the opportunity to see live blogs during filming and to watch virtual reality landscape data at home.

CBA's Festival of Archaeology

The Council for British Archaeology's Festival of Archaeology will run from Saturday 17 July to Sunday 1 August. The theme of this year's Festival is 'Exploring Local Places', encouraging archaeology enthusiasts of all ages to discover the archaeology which is all around them by exploring their local area and the stories of the people and communities who lived there.

This year, for the first time, the Festival will promote downloadable resources, so individuals can get involved from wherever they are, all year round. There will also be a science and archaeological-themed Twitter conference.

You can find out more about the Festival and its events on their website, which offers guidance and event registration for organisers and acts and information point for those who wish to attend Festival Events. See <https://festival.archaeologyuk.org/>

CoLAT grants

Researchers into London's archaeology are reminded that the deadline for grant applications from the City of London Archaeological Trust (CoLAT) is Friday 17 September 2021. Grants will be decided in December and will be available for one year only from 1 April 2022.

To download an application form and guidelines for completion, see <https://www.colat.org.uk/apply-for-a-grant/>

Diary

EXHIBITIONS

British Museum: *Thomas Becket: murder and the making of a saint*. Runs 20 May to 22 August 2021. For information on prices and booking timed tickets, and to sign up for updates, visit <https://tinyurl.com/yxhpbmur>

Museum of London Docklands:

Havering Hoard: a Bronze Age mystery. Runs until August 2021, free entry with timed ticket. Bookable up to six weeks ahead, with more tickets released weekly. Visit <https://www.museumoflondon.org.uk/museum-london-docklands>

Postal Museum: *Wish You Were Here: 151 Years of the British Postcard*. Runs 20 May to 2 January 2022. Tickets include this exhibition and a ride on Mail Rail. Visit <https://tinyurl.com/23r4sve9/>

ONLINE LECTURES

6 July (7.30 pm) Bromley Local History Society on Zoom. 'Building South Hill Park and its first residents: 1870–1920' by Tudor Davies. Non-members should book by emailing admin@bblhs.org.uk

15 July (8.00 pm) Bexley Archaeological Society on Zoom. 'The History of Rochester Bridge Trust' by Mrs Sue Threader (Bridge Clerk). (£5.00 to non-members). Book via <https://tinyurl.com/bryav9zc>

19 July (7.30 pm) Streattham Society on Zoom. 'London: "rus in urbe" – bringing the countryside to the city' by Barbara Wright. Check their website for booking details: <https://www.streatthamsociety.org.uk/>

28 July (2.00 pm) Guildhall Library on Zoom. 'Women in the City' by Jill Finch. Book via Eventbrite at: <https://tinyurl.com/w82ztkkb>

12 Aug (2.00 pm) Guildhall Library via Zoom. "'Still pushing the Boat out": the Regent's Canal two centuries on' by Lester Hillman. Book via Eventbrite at: <https://tinyurl.com/fwzzspdk>

18 Aug (2.00 pm) Guildhall Library on Zoom. 'Welcome to St Paul's Cathedral: a virtual tour' by Jill Finch. Book via Eventbrite at: <https://tinyurl.com/m4kzzfe7>

9 Sept (8.00 pm) London Westminster & Middlesex Family History Society on Zoom. 'Life and Death in the Workhouse' by Mark Carroll. Book via: <https://tinyurl.com/erx5fkru>

24 Sept (7.30 pm) Wandsworth Historical Society on Zoom. 'Growing up in wartime Battersea' by Carol Rahn. Non-members should book by emailing whsevents@wandsworthhistory.org.uk

VOLUNTEERS NEEDED

Last October the London Metropolitan Archives (LMA) announced the publication of a new project dataset: **Switching the Lens – rediscovering Londoners of African, Caribbean, Asian and Indigenous Heritage, 1561–1840**. It highlights records of over 2,600 individuals drawn from Anglican parish registers at LMA and is the result of research which began in 2002. You can search it here: <https://tinyurl.com/s53c42z4>

LMA is looking for volunteers interested

in systematically searching parish registers online to look for entries relating to Londoners of African, Caribbean, Asian and Indigenous heritage. The search will focus on City of London parish registers from the 1500s to 1837.

Volunteers will be given access to LMA's digitised parish records on Ancestry, and they can set you registers to search that match your skills and experience. This is a project that is only offered remotely, but staff are available to help you via email or Zoom. If you are interested in volunteering, email ask.lma@cityoflondon.gov.uk

WALKS

West Norwood Town Centre (self-guided) from the Norwood Forum. A map guides you to 21 blue plaques. Download from: <https://tinyurl.com/xp6ujxsh>

North and South Streattham Literary Walks (self-guided) from the Streattham Society, visiting locations connected to its famous literati. Download North from: <https://tinyurl.com/e47tk26d> and South from: <https://tinyurl.com/33wm7uzw>

KEEP THE DATE

6 and 13 Nov 2021 London & Middlesex Archaeological Society will be holding their Local History Conference online across two half-days. The theme will be "'London Overcomes": resilience and recovery in the history of the capital'. More details and how to book will be posted on their website: <http://www.lamas.org.uk/>

From our archives: look back to our previous reports

Articles about HIGHGATE WOOD

Brown, A E & Sheldon, H L 'Early Roman Pottery Factory in North London'. *London Archaeol* 1 (2) (1969), 38–44.

<https://doi.org/10.5284/1070472>

Brown, A E & Sheldon, H L 'Post-Excavation Work on the Pottery from Highgate'. *London Archaeol* 1 (3) (1969), 60–5.

<https://doi.org/10.5284/1070476>

n.a. 'Analytical Comments on the Highgate Pottery'. *London Archaeol* 1 (4) (1969), 92.

Butterworth, P 'Moving a Roman Kiln' *London Archaeol* 1 (4) (1969), 75–9.

<https://doi.org/10.5284/1070478>

Brown, A E & Sheldon, H L 'Highgate 1969' *London Archaeol* 1 (7) (1970), 150–4.

<https://doi.org/10.5284/1070496>

Brown, A E & Sheldon, H L 'Highgate Wood 1970-71' *London Archaeol* 1 (13) (1971), 300–3. <https://doi.org/10.5284/1070451>

Brightwell, A & Horniman Museum 'Horniman Museum Roman Kiln Experiment' *London Archaeol* 2 (1) (1972), 12–17. <https://doi.org/10.5284/1070514>

Horniman Museum 'The Horniman Kiln Experiment at Highgate – part 2' *London Archaeol* 2 (3) (1973), 53–9.

<https://doi.org/10.5284/1070569>

Brown, A E & Sheldon, H L 'Highgate Wood: the Pottery and its Production' *London Archaeol* 2 (9) (1974), 222–31.

<https://doi.org/10.5284/1070600>

Peacey, N & Hurst, M J 'The Highgate Wood pottery kiln experiment 2010' *London Archaeol* 13 (5) (2012), 133–9.

<https://doi.org/10.5284/1071241>

Articles about CROYDON

Drewett, P L 'Excavations in Old Town, Croydon' *London Archaeol* 1 (9) (1970), 204–8. <https://doi.org/10.5284/1070509>

Batchelor, G "'Friends, Romans, School children!" – archaeology and education in Croydon' *London Archaeol* 6 (8) (1990), 199–205. <https://doi.org/10.5284/1070843>

Nielsen, R. 'Early Anglo-Saxon burials in Croydon' *London Archaeol* 7 (1) (1992), 7–8. <https://doi.org/10.5284/1070851>

Potter, G '15–17 Brighton Road, Croydon: the investigation of a prehistoric and Roman site' *London Archaeol* 7 (9) (1994), 232–7. <https://doi.org/10.5284/1070909>

Potter, G '3–11 High Street, Croydon: the investigation of a late medieval to early 17th century urban site' *London*

Archaeol 7 (11) (1995), 299–304.

<https://doi.org/10.5284/1070863>

Potter, G 'A prehistoric site at 542–6 Purley Way, Croydon' *London Archaeol* 7 (12) (1995), 307–12.

<https://doi.org/10.5284/1070864>

Tucker, S 'Further evidence for prehistoric occupation found on the Purley Way, Croydon' *London Archaeol* 8 (1) (1996), 12–17. <https://doi.org/10.5284/1070913>

Welch, M G 'The Anglo-Saxon cemetery at 82–90 Park Lane, Croydon, Surrey: excavation or presentation?' *London Archaeol* 8 (4) (1997), 94–7.

<https://doi.org/10.5284/1070936>

Davison, J & Potter, G 'Excavations at 14 Whitgift Street, Croydon 1987–88 and 1995' *London Archaeol* 8 (9) (1998), 227–32.

<https://doi.org/10.5284/1070954>

Halsey, C J, Scaife, R G & Roberts, K 'The Mesolithic landscape in the Wandle Valley' *London Archaeol* 12 (7) (2009), 191–6.

<https://doi.org/10.5284/1071185>

Askew, P 'Excavations at 2–14 Whitgift Street, Croydon' *London Archaeol* 12 (10) (2010), 259–66.

<https://doi.org/10.5284/1071126>



LAMAS NEWSLETTER

LONDON AND MIDDLESEX ARCHAEOLOGICAL SOCIETY

London and Middlesex Archaeological Society (<https://www.lamas.org.uk>) are seeking a well organised, enthusiastic new Editor to take over production of the Newsletter which goes out to members 3 times a year (past copies can be viewed here <https://www.lamas.org.uk/archives.html>).

A keen interest in the archaeology and local history of London is essential and you will need to be a member of the Society (see <https://www.lamas.org.uk/join-lamas.html> for details on how to join).

As Editor you will be:

- scheduling and planning each issue in advance;
- ensuring regular contents are accurate and up-to-date;
- finding contributions and writing your own material for inclusion;
- proof reading and editing texts;

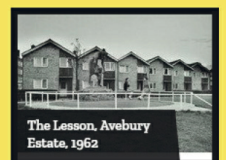
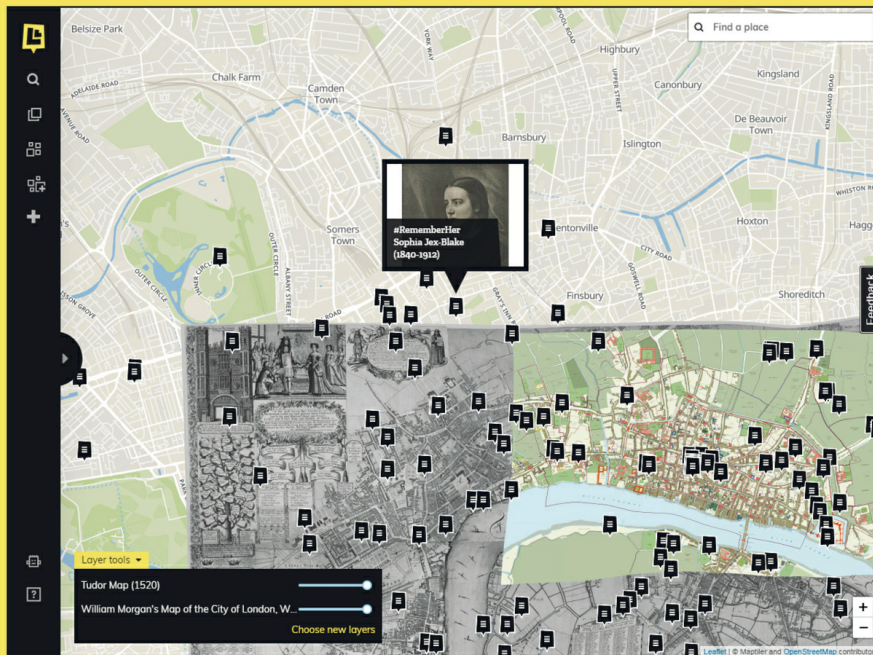
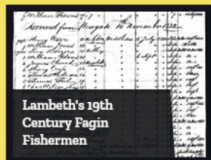
- using desktop publishing software to pull text and images together;
- liaising with the printers and the Hon. Membership Secretary to ensure timely distribution;
- an ex officio member of LAMAS Council and the Publications Committee.

So, if you enjoy searching the internet for interesting archaeological and historical news stories, have a good understanding of the English language and the relevant IT skills needed to bring everything together in an attractive and entertaining publication, and can spare a week or so every 4 months, then you could be the next LAMAS Honorary Newsletter Editor and we would love to hear from you.

The role is unpaid, but all out of pocket expenses will be met by the Society. For more information or to express an interest in the role, please contact the Hon. Secretary at secretary@lamas.org.uk.

www.LayersofLondon.org

Collectively mapping the stories and heritage of London



Explore and contribute to historic maps of London

[layersoflondon](https://twitter.com/layersoflondon)

layersoflondon@london.ac.uk

