

Mosaic

Still waters run deep

'Unpath'd Waters: Marine and Maritime Collections in the UK' (UNPATH) is one of five projects awarded £14.5 million by the Arts & Humanities Research Council (AHRC) in September 2021. It is part of a major five-year research programme that aims to underpin the creation of a unified virtual 'national collection'. It intends to reshape the future of the UK marine heritage, by making records accessible across all four nations and opening them up worldwide, allowing visualisations of underwater landscapes, and identifying wrecks and the artefacts from them.

UNPATH will both deliver tools to protect our important heritage and will invite the public to co-design ways of exploring the archives to uncover previously untold stories and pose new questions to guide future research.

Barney Sloane, Historic England's Principal Investigator, will lead the project, and MOLA will oversee public engagement and evaluation activities, working with other partners in immersing different audiences in maritime datasets and developing associated exhibitions.

Chamber pot under the bed?

A villa in Pompeii Archaeological Park was discovered when police uncovered illegal tunnels dug by alleged looters in 2017. The building lay close to where archaeologists found the remains of a well-preserved ceremonial chariot in January 2021 (<https://tinyurl.com/k4fnwshw>).

Excavations have revealed a room in the villa with three adjustable wooden beds; two measuring 1.7m and the third 1.4m. The room contained amphorae, ceramic flagons and a chamber pot. Nearby, a wooden chest contained metal objects and textiles that were possibly parts of horse harness, and a wooden steering element for a chariot. The room may have been a slave dormitory and storage area.

Counting the teeth

A new dinosaur species has been identified by Jeremy Lockwood, a retired doctor and now a PhD student at the Natural History Museum. Found on the Isle of Wight some years ago, a partial skeleton was found in the stores. The species, now called *Brighstoneus simmondsi*, is a close relative of *Iguanodon*.

The new species has more teeth, a curved nose and other features different to the iguanodontid species *Mantellisaurus atherfieldensis* and the larger *Iguanodon bernissartensis* identified from the island.

The new dinosaur was found in deposits from the early Cretaceous Period, some 125



A rare Roman silver *siliqua*, dated AD 363–4, of the emperor Jovian, from the Walthamstow excavations (see pp 189–91). His reign lasted just eight months. © PCA

million years ago. These deposits are rare across the world, being found only in China, Mongolia, areas of Japan and the Isle of Wight.

Researchers believe it could be the first of many new finds on the island, challenging the previous view that there were only two main species of iguanodontids on the island. For example, two new *spinosaurids* from the island were identified in September. Many bones have been found and are still being uncovered due to erosion by the sea.

Kent and south-east London update

Kent Archaeological Rescue Unit (KARU) has just published an updated history of their archaeological excavations in their area. Entitled *Archaeology on the Front Line: 70 years of rescue 1952–2022 across Kent and S E London* by Brian Philp, it covers such sites as Faversham Royal Abbey, forts at Dover and Reculver, Roman villas, Saxon cemeteries, and later palaces and manor houses. Available from KARU, 18 Highfield Avenue, Orpington, Kent BR6 6LF, it costs £20 (plus £4 p+p).

Women in archaeology and heritage

The Society of Antiquaries of London first formally admitted women to its fellowship in June 1920, then a welcome advance in recognising women's contributions to the fields of archaeology, history and heritage, but this is not the whole story. 'Beyond Notability' is a three-year research project funded by the AHRC.

Led by the Institute of Classical Studies at the University of London's School of Advanced Study, in partnership with the Society of Antiquaries of London and University of Southampton Digital

Humanities, it will bring together academic researchers with expertise in intellectual and social history, information science and digital humanities to explore the history of women in archaeology, history and heritage in Britain.

Using the Society of Antiquaries archives and those of the Royal Archaeological Institute, the project will create an unprecedented open, accessible research data set of women active in archaeology, history and heritage in the late 19th and early 20th centuries. It will tell their stories and map them using linked open data, ensuring the information is discoverable and accessible.

Surrounding the new Museum of London

The City of London Corporation is looking for contractors to develop four separate buildings containing almost 6,000 sq m of floor space, located adjacent to the new Museum of London. The Engine House will be developed to house a staircase and lift to access a basement space that will be occupied by the relocated Museum of London.

The Annexe Building, which was once a fish market, will be developed into a space that could be used as a museum, retail space or offices, while the Red House – a former cold store – will become offices with retail space on the ground floor.

The final building, a 1960s insert known as the Iron Mountain, will be developed into a space that could also be used for events, a food market or retail.

Dating of Viking evidence in North America

In the 1960s, Norse buildings were discovered at L'Anse aux Meadows in Newfoundland. A new study from the University of Groningen, Netherlands, has revealed the most accurate dating yet for this site (1021 CE) by using C14 dating of three pieces of wood found from contexts containing Viking material.

Each piece also showed clear evidence of being cut with metal, a material native Americans weren't using at that time.

Trojan War mosaic

A new Roman mosaic, some 11 x 7m, has been discovered on Rutland farmland. Initially found by the farmer, a team from the University of Leicester, funded by English Heritage, uncovered the mosaic and found the remains of an extensive villa complex.

The mosaic depicts Achilles in battle with Hector – the first example found in Britain. The site has been scheduled and the mosaic covered over, with further excavations due next year.

Diary

Please note that most societies anticipate a donation for attendance by non-members.

January (Online and Live)

11 (6.30 pm) London & Middlesex Archaeological Society (Zoom). 'Hillingdon's Hidden History' by Emma Tetlow, Skanska-Costain Archaeology. Book at:

<http://www.lamas.org.uk/lectures.html>

12 (7.30 pm) Acton History Group. 'Come to The White City: the exhibitions at Shepherds Bush 1908-1914' by Keith Whitehouse. St Mary's Church Hall, The Mount, Acton, W3 9NW.

18 (2.30 pm) Uxbridge Local History Society. 'The Great Fire of London' by Jill Finch. Christ Church, 51 Redford Way, Uxbridge, UB8 1QS.

19 (7.45 pm) Leyton & Leytonstone Historical Society (Zoom). 'My Latest Year in Archaeology' by Les Capon. Please email measure@btinternet.com for the Zoom link.

20 (8.00 pm) Barnes & Mortlake History Society. 'Early Council Housing Estates in South West London' by Martin Stilwell. St Mary's Church, Church Road, Barnes, SW13 9HL.

20 (8.15 pm) Bexley Archaeological Group (Zoom). 'Garderoberes & Gongfermors: going to the privy in the medieval era' by James Wright, Triskele Heritage. Register via <https://www.bag.org.uk/events-and-education/> (non-members £5.00).

25 (7.45 pm) Hounslow and District History Society (Zoom). 'A History of Richmond Park' by Max Lankester, Vice-President of the Friends of Richmond Park. Request access via their website: http://www.hounslowhistory.org.uk/?page_id=66

29 (2.30 pm) Barnes & Mortlake History Society. 'Paying the Parson: Exploring Mortlake's Tithe Map' by David Deaton. All Saints Church, East Sheen Avenue, East Sheen, SW14 8AX.

February (Online and Live)

3 (8.00 pm) Pinner Local History Society. 'Conservation Engineering & Recovering Woolwich Arsenal Clocktower' by Jez Foster. Pinner Village Hall, Chapel Lane Car Park, HA5 1AB.

7 (8.00 pm) Borough of Twickenham Local History Society. 'Wandering Around East

Twickenham in Postcards' by Alan Winter. St Mary's Church Hall, Church Street, Twickenham, TW1 3NJ.

9 (7.30 pm) Acton History Group.

'Secret Ealing' by Paul Lang. St Mary's Church Hall, The Mount, Acton, W3 9NW.

17 (8.15 pm) Bexley Archaeological Group (Zoom). 'The Archaeology of the Thames Foreshore' by William Rathouse, MOLA. Register via <https://www.bag.org.uk/events-and-education/> (non-members £5.00).

21 (8.15 pm) Ruislip, Northwood & Eastcote Local History Society. 'The Restoration of Fulham Palace' by Alexis Haslam, Community Archaeologist, Fulham Palace Trust. Please check their website (www.RNELHS.org.uk) for the log-in link closer to the date.

March (Online and Live)

1 (7.45 pm) Bromley Borough Local History Society. 'Bromley Welcomes Belgian Refugees' by Pam Preedy (local historian). Church Hall, St. George's Church, Bickley Park Road, Bromley, BR1 2BE.

7 (8.00 pm) Borough of Twickenham Local History Society. 'Housing the Workers: the birth of council housing in London 1890-1925' by Martin Stilwell. St Mary's Church Hall, Church Street, Twickenham, TW1 3NJ.

8 (6.30 pm) London & Middlesex Archaeological Society (Zoom). 'The Civil War Defences of London: rewriting history (and archaeology)' by Peter Mills & Mike Hutchinson, Mills Whipp Projects. Book at: <http://www.lamas.org.uk/lectures.html>

10 (8.00 pm) Richmond Archaeological Society. 'A Bronze Age funerary landscape and Anglo Saxon settlement and cemetery at Overstone Leys' by Simon Markus, Museum of London Archaeology. For the log-in link, please email Stephen Alexander at alexander.stephen@gmail.com (you may be asked for a donation).

15 (2.30 pm) Uxbridge Local History Society. 'The History of Heathrow Airport' by Adrian Constable. Christ Church, 51 Redford Way, Uxbridge, UB8 1QS.

16 (7.45 pm) Leyton & Leytonstone Historical Society (Zoom). 'Wanstead House: East London's lost palace' by Hannah Armstrong (author). Please email measure@btinternet.com for the Zoom link.

17 (8.00 pm) Barnes & Mortlake History

AGM followed by 'History of the Star and Garter Home' by Victoria McGrath. St Mary's Church, Church Road, Barnes, SW13 9HL.

21 (8.15 pm) Ruislip, Northwood & Eastcote Local History Society. 'Old London Bridge and its Houses, c. 1209-1761' by Dorian Gerhold, House of Commons clerk 1978-2012. Please check www.RNELHS.org.uk for the log-in link closer to the date.

April (Online and Live)

4 (8.00 pm) Borough of Twickenham Local History Society. 'John Charles Buckmaster: Father of Teddington Library' by Ken Howe. St Mary's Church Hall, Church Street, Twickenham, TW1 3NJ.

CONFERENCE

19 March 2022 (9.45 am-16.00 pm) London & Middlesex Archaeological Society will be holding their Archaeological Conference online. The theme will be 'The Archaeology of HS2'. More details and how to book will be posted on their website:

<http://www.lamas.org.uk/>

JOIN

Council for British Archaeology (CBA)

London was set up in 2008 to act as a hub for archaeological activities and organisations in the city and environs of London. They run an events programme for members and other interested parties, and the London Archaeology Forum, held twice a year. You can join at:

<https://tinyurl.com/57jbnmtm>

WATCH ON YOUTUBE

Type in YouTube's usual URL (below) and then the specific access code as given, OR search on the society's name:

<https://www.youtube.com/channel/>

City of London Archaeological Society

Lectures can be watched on YouTube

[UCu-NhzPaThDasofuGzpvqVA/videos](https://www.youtube.com/channel/UCu-NhzPaThDasofuGzpvqVA/videos)

London & Middlesex Archaeological Society

Lectures can be watched on YouTube:

[UC165iliNt8UZgfQzDutxK_Q/videos](https://www.youtube.com/channel/UC165iliNt8UZgfQzDutxK_Q/videos)

Society of Antiquaries of London

Lectures can be watched on YouTube:

<https://www.youtube.com/user/SocAntiquaries/videos>

From our archives: look back to our previous reports

Articles about the BATTLE OF BARNET

Watson, B 'Barnet: the ongoing archaeological search for Greater London's only medieval battlefield' *London Archaeol* **14** (5) (2015), 132-9.

<https://doi.org/10.5284/1071286>

Articles about EDEN STREET, Kingston

Hinton, M 'Medieval Pottery from a Kiln Site at Kingston upon Thames' *London Archaeol* **3** (14) (1980), 377-83.

<https://doi.org/10.5284/1070623>

Nelson, S 'A Group of Pottery Waster Material from Kingston' *London Archaeol* **4** (4) (1981), 96-102.

<https://doi.org/10.5284/1070713>

Hawkins, D 'A product of its environment: revising Roman Kingston' *London Archaeol* **11** (8) (2007), 199-203.

<https://doi.org/10.5284/1071103>

Articles about SOUTHWARK CATHEDRAL

Hammerson, M J 'Excavations under Southwark Cathedral' *London Archaeol* **3** (8)

(1978), 206-12.

<https://doi.org/10.5284/1070663>

Ridgeway, V 'Southwark Cathedral: towards a third millennium' *London Archaeol* **12** (3) (2008), 67.

<https://doi.org/10.5284/1071158>

Articles about SOUTHWARK STREET

Beard, D & Cowan, C J 'Excavations at 15-23 Southwark Street' *London Archaeol* **5** (14) (1988), 375-81.

<https://doi.org/10.5284/1070753>

London Archaeologist



Back issues & binders

All prices include postage & packing
To order, please email the **Membership Secretary** via our website contact form:
<https://www.londonarchaeologist.org.uk/contact-us.html>

OR send a cheque with order, payable to **London Archaeologist**, to:
**63 Dinmont House
Pritchard's Road
London E2 9BW**



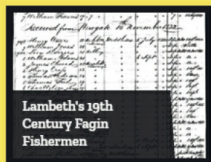
Binders

- suitable for both original and current size magazines
- dark blue with gold title
- holds complete volume of 12 issues, 3 Round-ups and an index
- £8 each in UK (£10 elsewhere)

Copies of Vol 15–01 onward are available for purchase at £4.50 per issue in UK and £5.50 elsewhere

www.LayersofLondon.org

Collectively mapping the stories and heritage of London



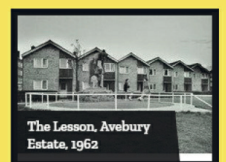
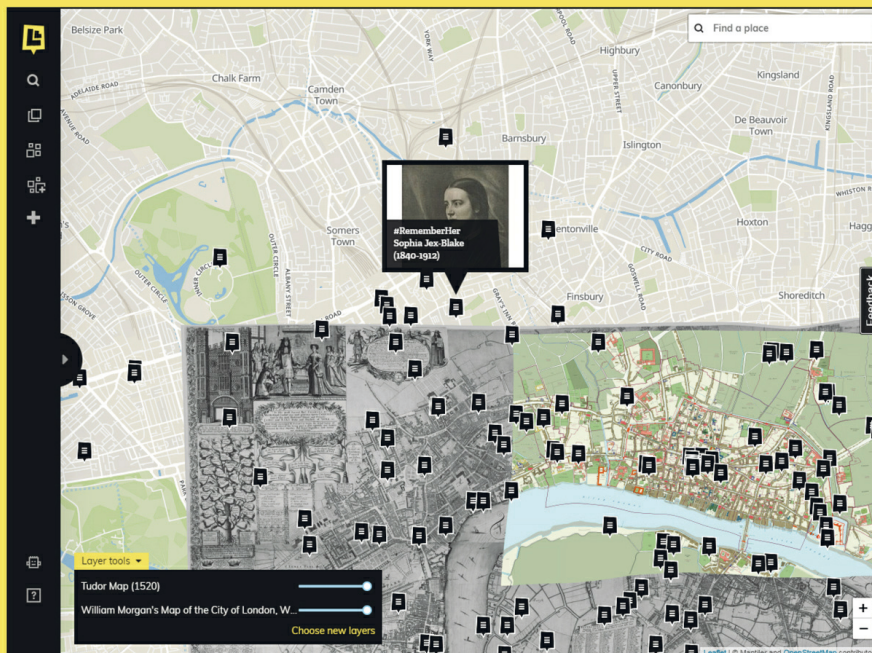
Lambeth's 19th Century Fagin Fishermen



The Burgurers of Calais



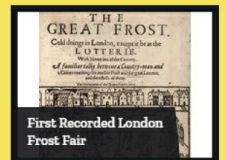
Clerkenwell Green



The Leason, Avebury Estate, 1962



St Paul's Cathedral



First Recorded London Frost Fair

Explore and contribute to historic maps of London

layersoflondon

layersoflondon@london.ac.uk