

CLEARY GARDEN
QUEEN VICTORIA STREET, CITY OF LONDON EC4V 2AR
AN ARCHAEOLOGICAL WATCHING BRIEF

SITE CODE: CGD18
APPROX. SITE NGR: TQ 32270 80915



COMPASS ARCHAEOLOGY LIMITED
250 YORK ROAD
LONDON SW11 3SJ
Tel: 020 7801 9444

mail@compassarchaeology.co.uk
www.compassarchaeology.co.uk

April 2018

©Compass Archaeology Limited

1 INTRODUCTION

- 1.1 An archaeological watching brief took place on 19 March 2018 during groundworks for new railings within Cleary Garden, between Queen Victoria Street and Upper Thames Street, London EC4V (Fig.1). The works comprised a total of eight pits excavated for new supporting posts between panels, located around the perimeter of an open terraced space immediately to the west of Huggin Hill.
- 1.2 The watching brief was commissioned by the City of London Corporation (City Gardens: Open Spaces Department). The works formed part of a wider refurbishment of the Garden, including new stairs to the upper level and paving.

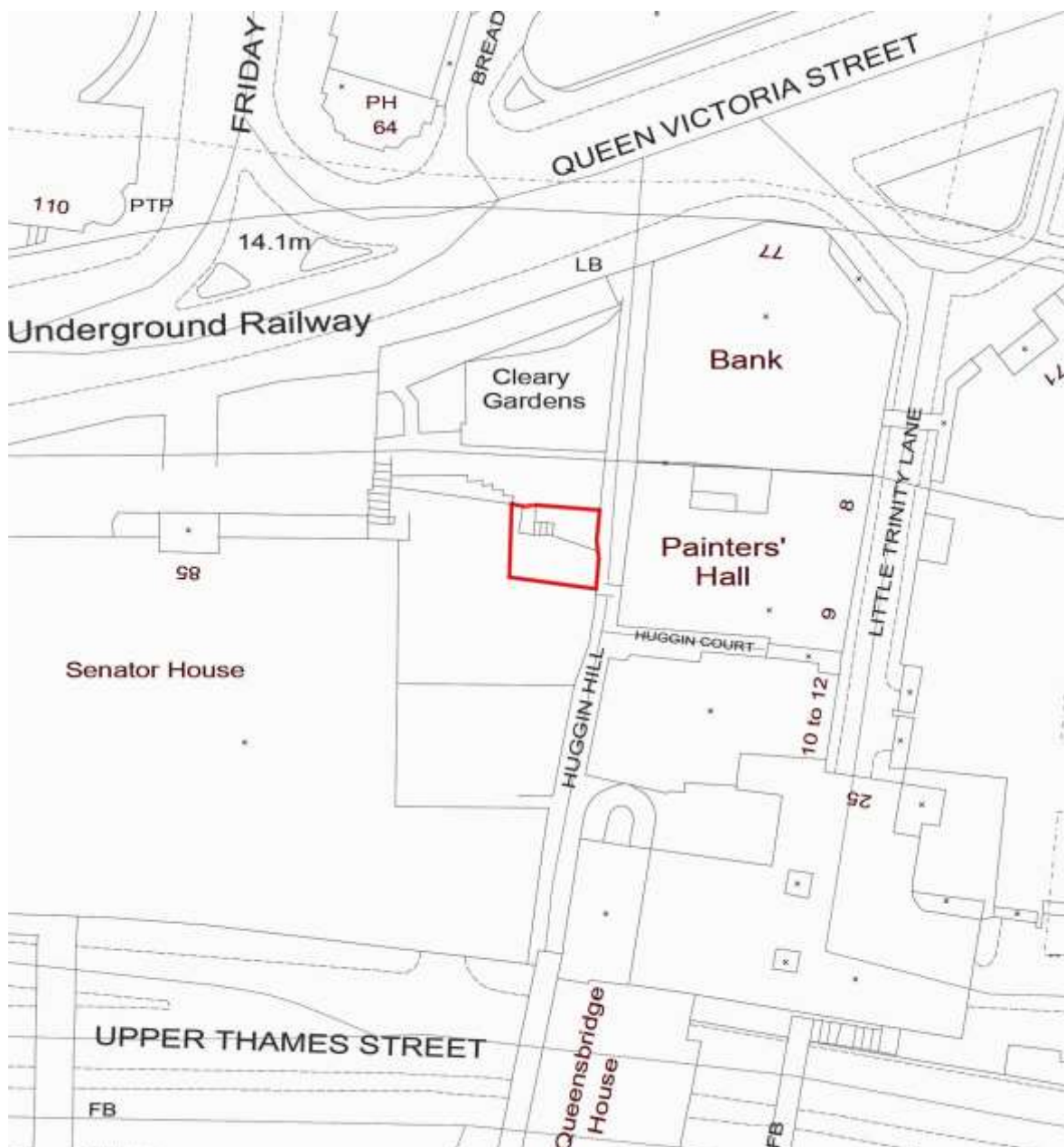


Fig 1: Site location outlined in relation to an Ordnance Survey extract

Reproduced from Ordnance Survey digital data with permission of the HMSO. ©Crown Copyright. All rights reserved. Compass Archaeology Ltd., London SE1 1RQ, licence no. AL 100031317

- 1.3** The site lies within the northern part of the area of the Huggin Hill Roman Baths Scheduled Ancient Monument (LO160) and within a wider area of Archaeological Potential as designated by the City of London.
- 1.4** The layout of the post pits (1-8) is illustrated in figures 2 and 3 below. The posts were set above and just behind the line of adjoining south- and west-facing brick retaining walls, and some 2.25m to 2.6m above the lower ground level. The centre point of the posts were set *c* 2.24m apart except at the southwest corner, where there was a much shorter prefabricated panel.

2 METHODOLOGY

- 2.1** The groundworks were monitored during excavation, and a full record made once all eight pits were opened. Individual dimensions were noted and exposed deposits and features were recorded as appropriate on *pro forma* sheets. Digital photographs of each pit and some general views were taken in RAW and .jpeg formats. The recorded pits were located onto a site plan by taped measurement and in turn related as a ‘best fit’ to the Ordnance Survey map derived from digital data (*cf.* figs.1 & 2).
- 2.2** The site records have been allocated the site code: CGD18 by the Museum of London Archaeological Archive. No significant finds or samples were recovered during the watching brief.

3 THE ARCHAEOLOGICAL FIELDWORK

- 3.1** The dimensions of the post pits averaged *c* 260mm in diameter (narrowing slightly to the base) by 500mm to 550mm deep. Pit 7 was slightly deeper (*c* 600mm), and the terminal pits slightly shallower – the latter partially obstructed by masonry, a sandstone slab to the north and mortared brickwork to the east running parallel with Huggin Hill itself.
- 3.2** In general a fairly shallow layer of topsoil (*c* 100mm) overlay slightly lighter and firmer/more clayey made ground, the only finds being a few fragments of quite recent brick (Fig.4). Pits 3 and 7 also revealed some *in situ* brickwork, presumably related to the adjacent retaining walls – in the first instance in the southern section (Fig.5); in the latter at the base of excavation and stepping out *c* 240mm behind the surface level wall line.
- 3.3** The soil profile that was revealed in excavation presumably represents made ground behind the two retaining walls. In view of its consistency it was most likely part of the post-war development of this area as gardens, imported onto the site after the bombed building remains and debris had been cleared.

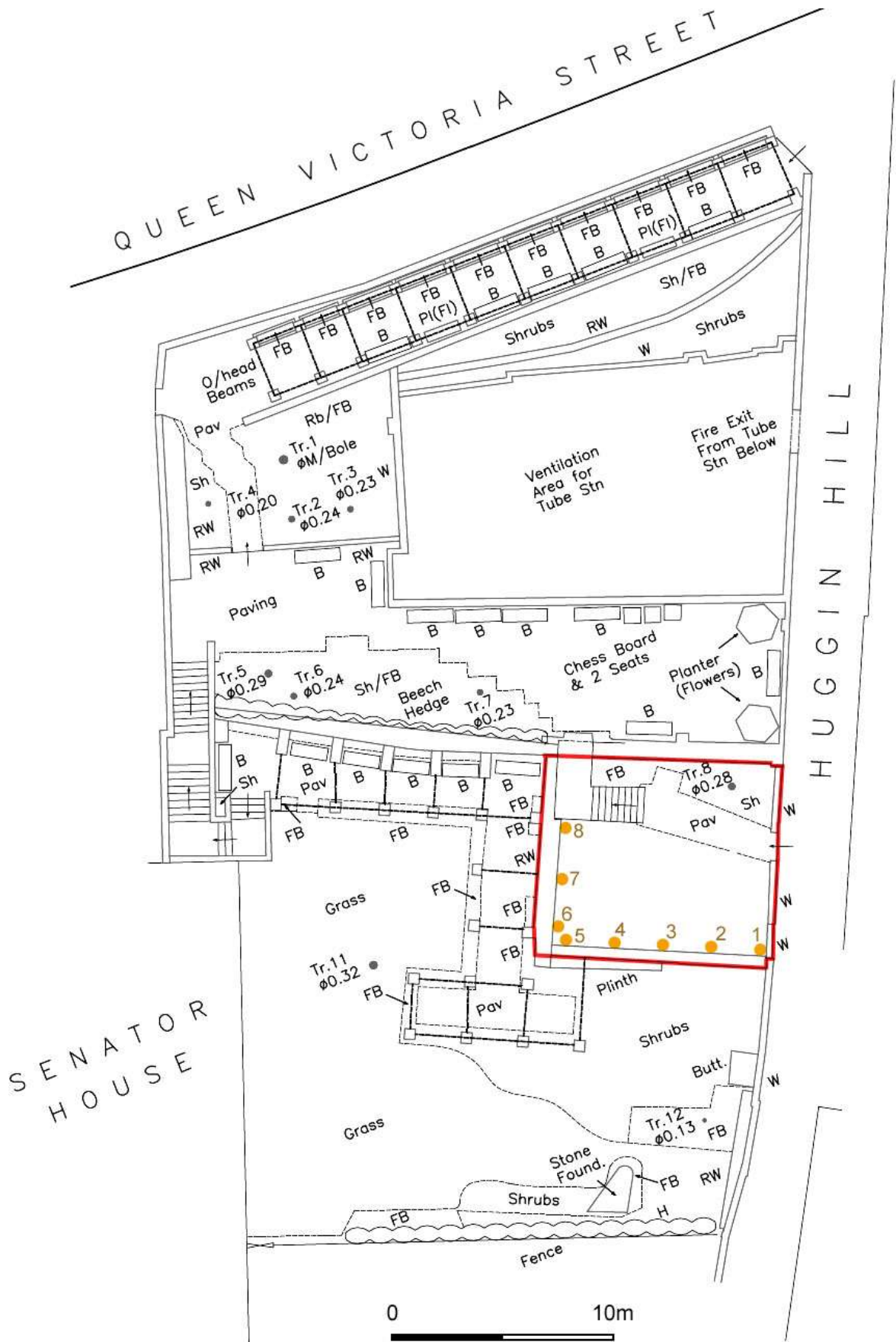


Fig 2: Site survey showing the location of the individual post pits (1-8) at the top of the retaining walls

Based on a drawing supplied by the City Surveyor's Department, Plans & Research Section. Drwg No. 3-C-40154



Fig.3: View looking south at the western end of the excavated area: pits 5 to 8 (in foreground)



Fig.4: Pits 5 & 6 at the corner of the new railing, looking southwest. 0.20m scale



Fig.5: Pit 3, looking south and exposing a small section of modern brickwork at the rear of the east-west retaining wall . 0.20m scale

4 Sources

CIfA, 2014. *Standard and Guidance for an archaeological watching brief*

City of London Local Plan, January 2015. *Policy DM 12.4 Ancient monuments and archaeology 1998 (rev^d.)*

Historic England, 2015. *GLAAS: Guidelines for Archaeological Projects in Greater London*

London Parks and Gardens Trust, 2010. *London Gardens online database*.
<http://www.londongardensonline.org.uk/gardens>

APPENDIX. Oasis Data Collection Form

OASIS ID: compassa1-313140

Project details

Project name	Cleary Garden, London EC4V
Short description of the project	Eight post pits for new railings within the terraced garden were excavated, averaging 260mm in diameter by 500-550mm deep. A shallow topsoil (c 100mm) generally overlay a slightly lighter and more clayey deposit, the only finds being fragments of fairly recent brick. In situ brickwork in two pits appeared to be part of the adjacent retaining walls; further masonry was also found in the pits at either end of the run. The exposed soil profile presumably represents made ground behind the retaining walls: it was probably imported onto the site after clearance of wartime bomb damage, as part of the present public garden development .
Project dates	Start: 19-03-2018 End: 19-03-2018
Previous/future work	No / No
Any associated project reference codes	CGD18 - Sitecode
Type of project	Recording project
Site status	Scheduled Monument (SM)
Current Land use	Other 5 - Garden
Monument type	GARDEN Modern
Investigation type	""Watching Brief""
Prompt	Scheduled Monument Consent

Project location

Country	England
Site location	GREATER LONDON CITY OF LONDON CITY OF LONDON Cleary Garden
Postcode	EC4V 2AR
Study area	85 Square metres
Site coordinates	TQ 32277 80907 51.511087529761 -0.093615470214 51 30 39 N 000 05 37 W Point

Project creators

Name of Organisation	Compass Archaeology
Project brief originator	Historic England
Project design originator	Compass Archaeology
Project director/manager	Geoff Potter
Type of sponsor /funding body	Local Authority
Name of sponsor /funding body	City of London Corporation (Open Spaces Department)

Project archives

Physical Archive Exists?	No
Digital Archive recipient	Museum of London Archaeological Archive
Digital Archive ID	CGD18
Digital Contents	"other"
Digital Media available	"Images raster / digital photography", "Text"
Paper Archive ID	CGD18
Paper Contents	"other"
Paper Media available	"Drawing", "Plan", "Report"

Project bibliography 1

Publication type	Grey literature (unpublished document/manuscript)
Title	Cleary Garden, Queen Victoria Street, London EC4V 2AR. An Archaeological Watching Brief
Author(s)/Editor(s)	Potter, G
Date	2018
Issuer or publisher	Compass Archaeology
Place of issue or publication	250 York Road, SW11 3SJ
Description	Short (7-page) report outlining the background and nature of the project, work undertaken and results. Includes plans showing locations of the site and groundworks, plus 3 photographs