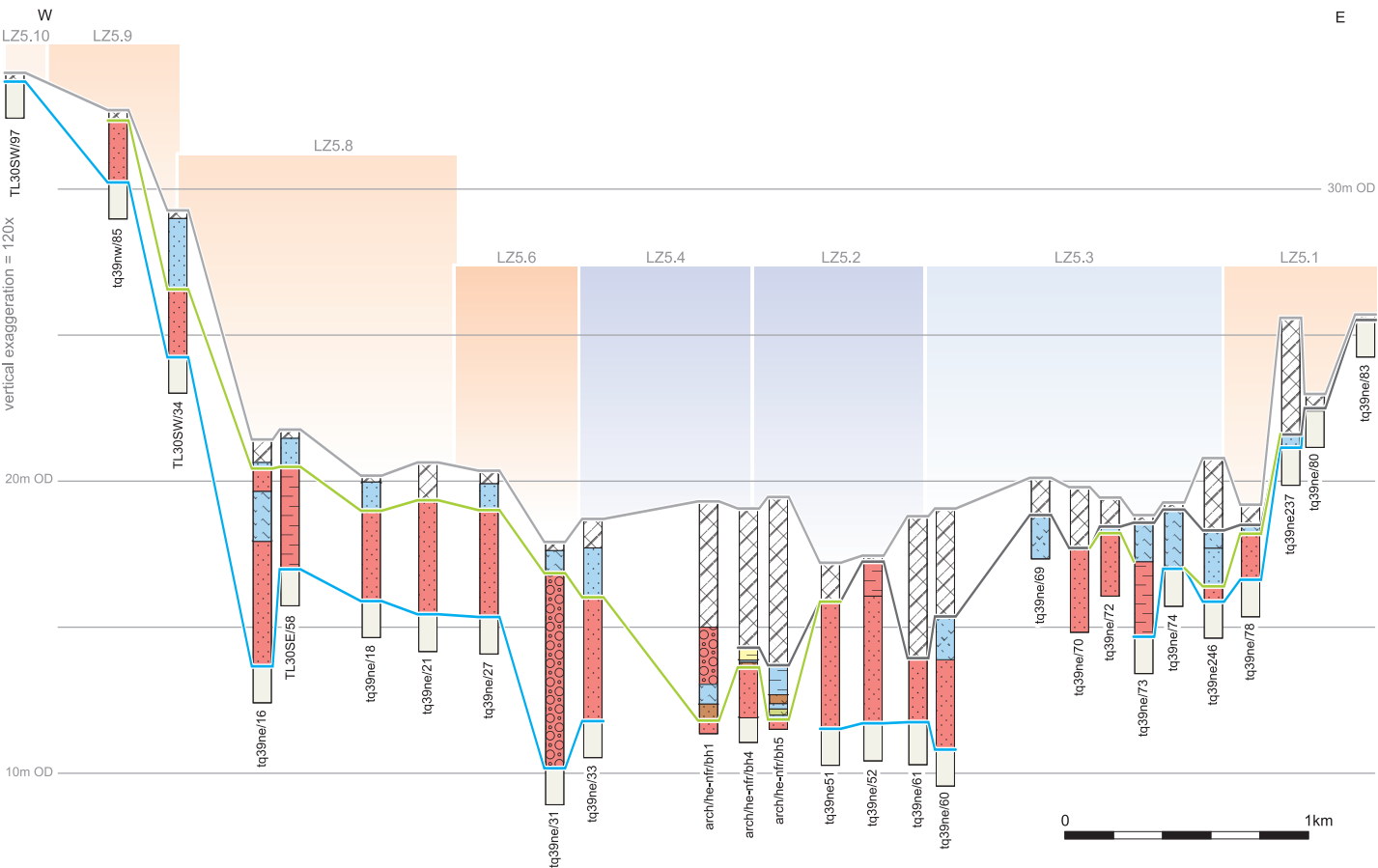
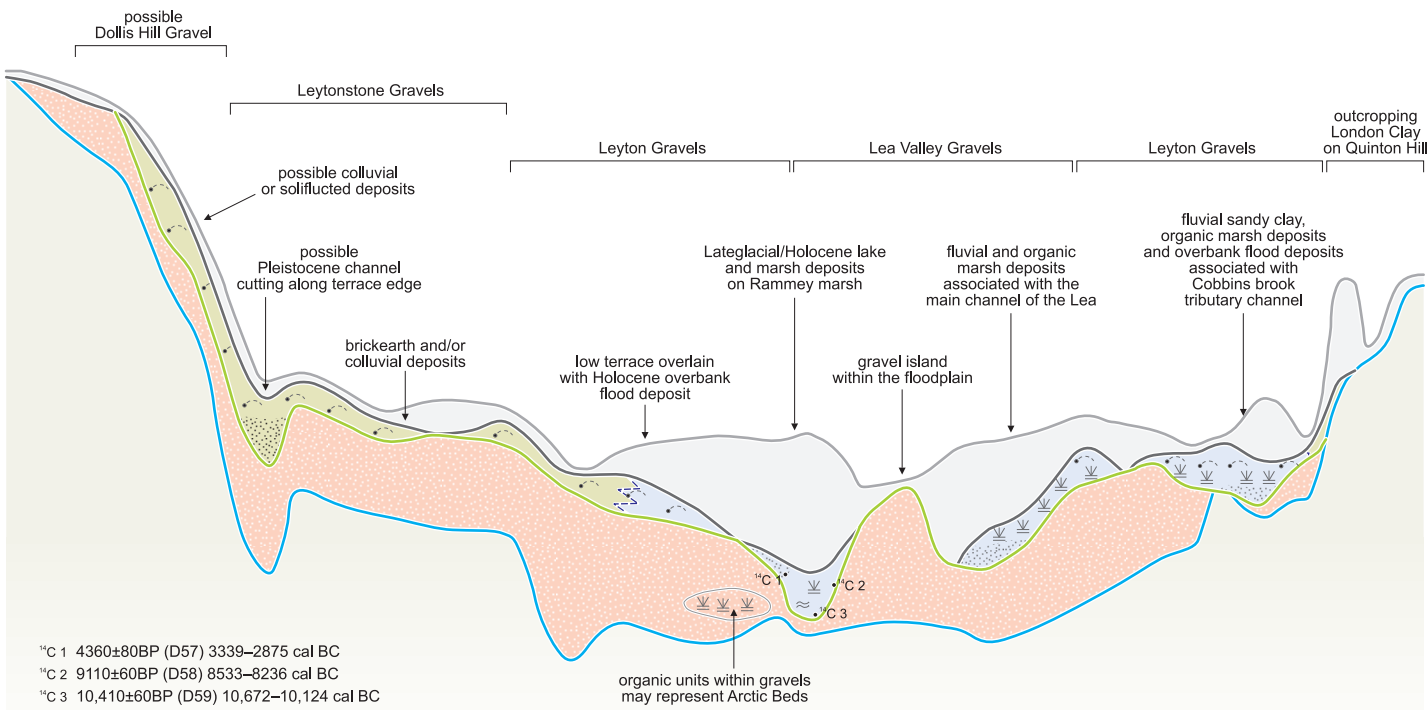


borehole transect



reconstructed schematic section



- ¹⁴C 1 4360±80BP (D57) 3339–2875 cal BC
- ¹⁴C 2 9110±60BP (D58) 8533–8236 cal BC
- ¹⁴C 3 10,410±60BP (D59) 10,672–10,124 cal BC

organic units within gravels may represent Arctic Beds