

Plate 1: Magnetometer lines over multibeam sonar image.

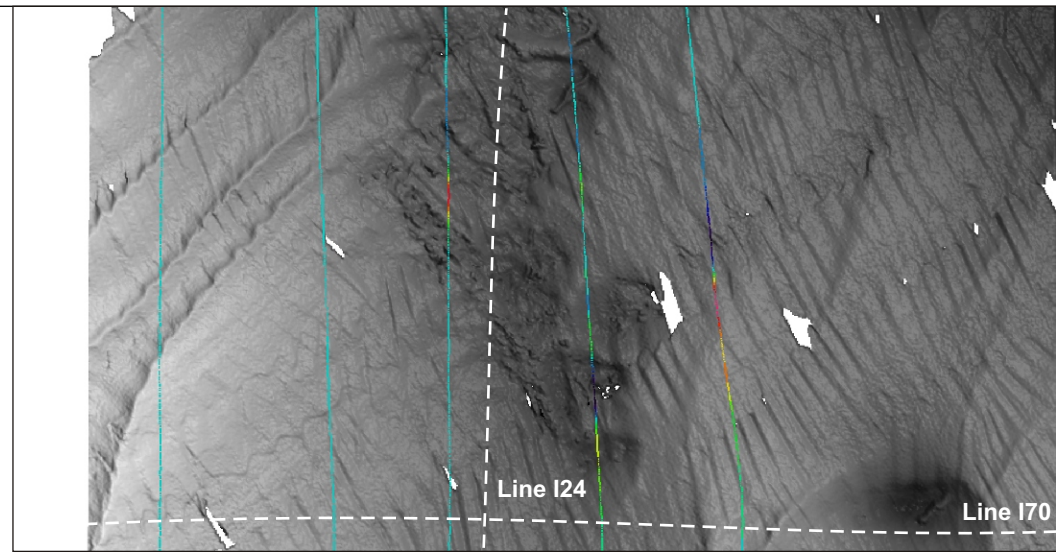


Plate 2: Closeup of magnetometer lines and sub bottom profiler tracklines.

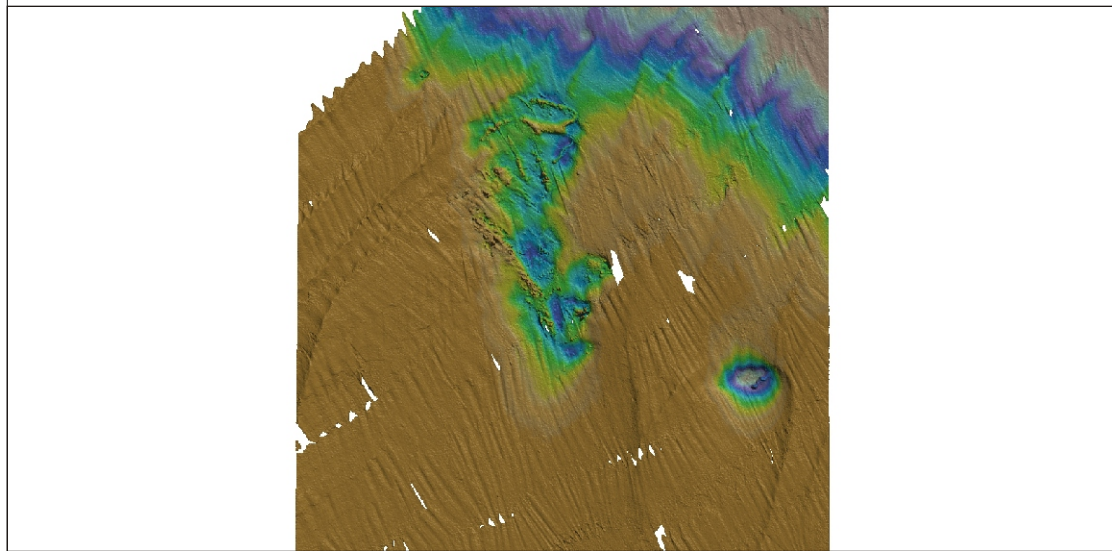
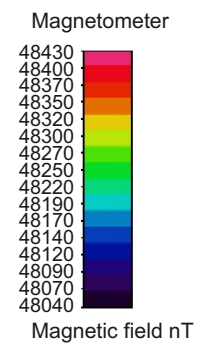


Plate 3: Top view of multibeam data.

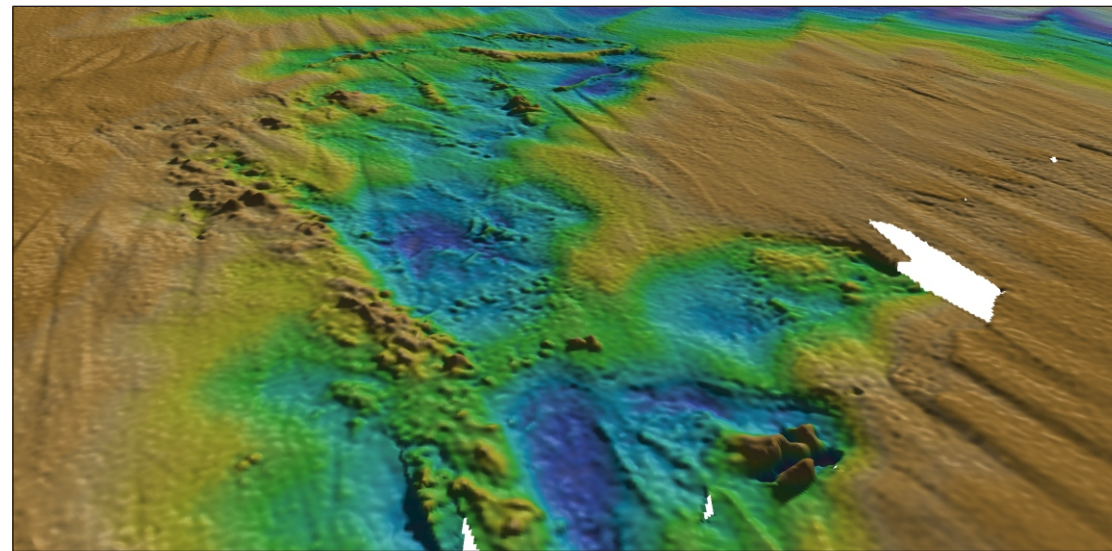


Plate 4: Multibeam image of the *Invincible* site, looking north.

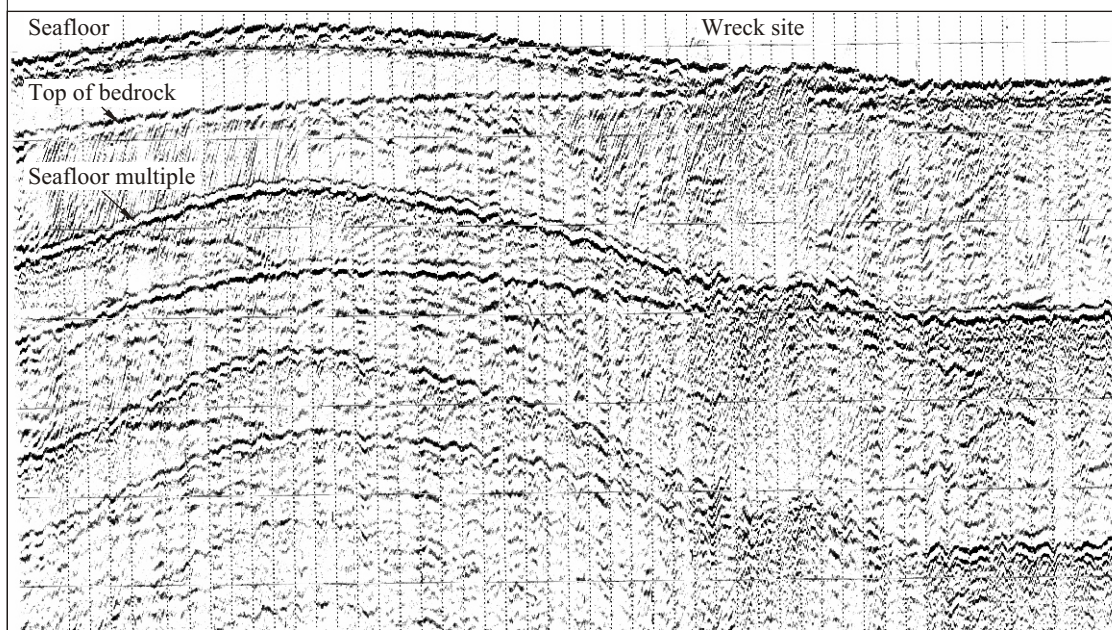
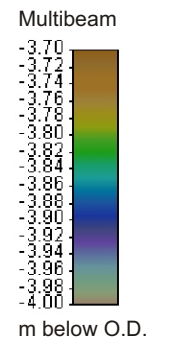


Plate 5: Sub bottom profiler line I24.

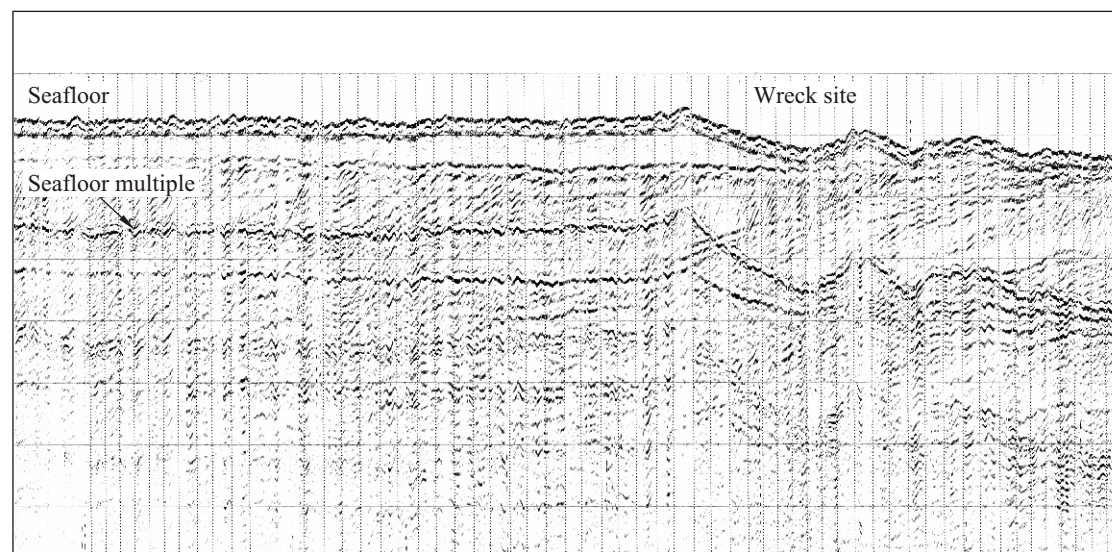
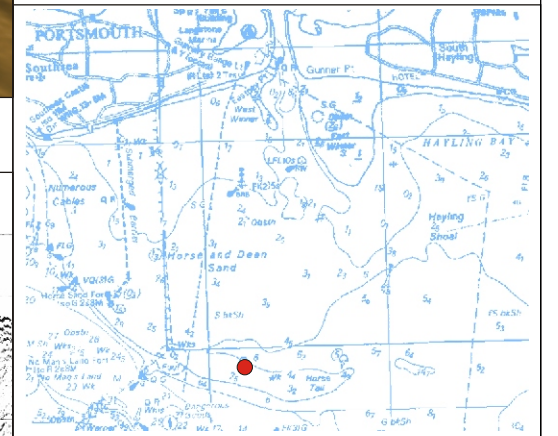


Plate 6: Sub bottom profiler line I70.



Wessex  
Archaeology

Date:	11/03/04
Revision Number:	0
Illustrator:	KMN
Path:	W:\51536\Drawing Office\figures\04_03