

Plate 1: Magnetometer lines over multibeam sonar images.

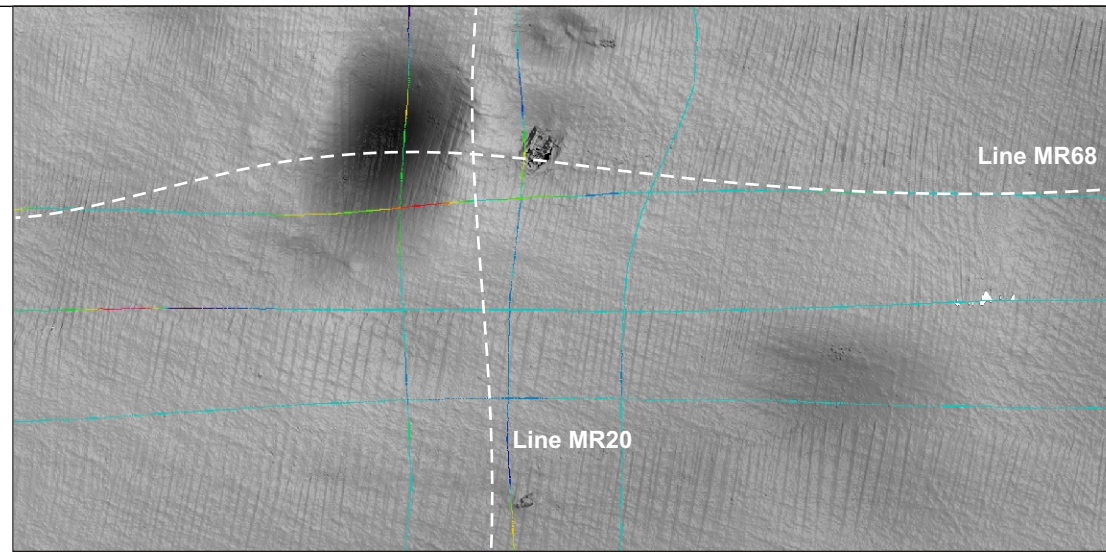


Plate 2: Closeup of magnetometer lines and sub bottom profiler tracklines.

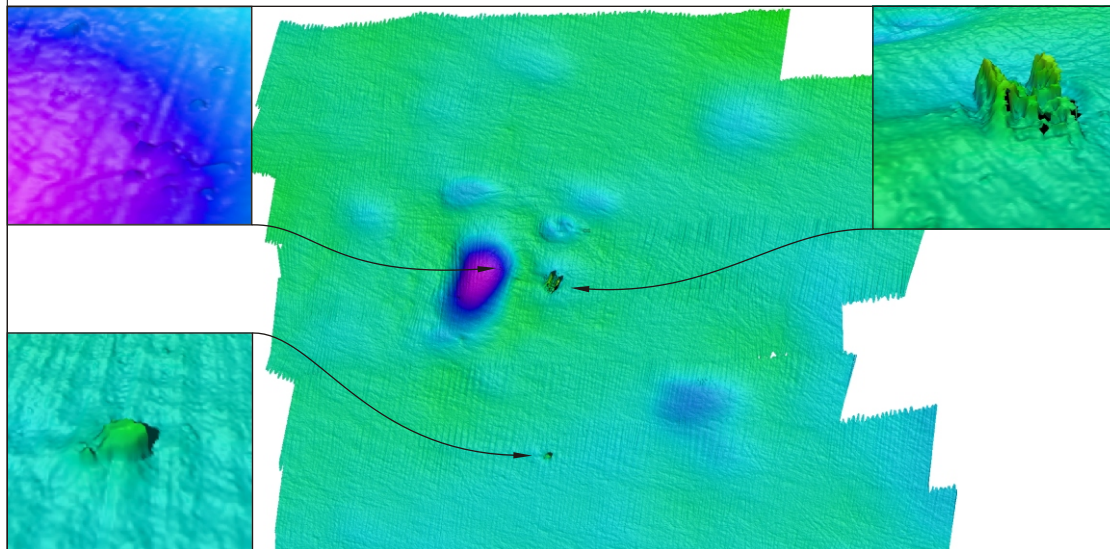
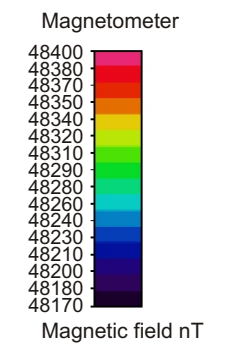


Plate 3: Top view of multibeam data, with insets showing features in the main excavation depression, the diving platform and an unidentified ferrous object south of the site.

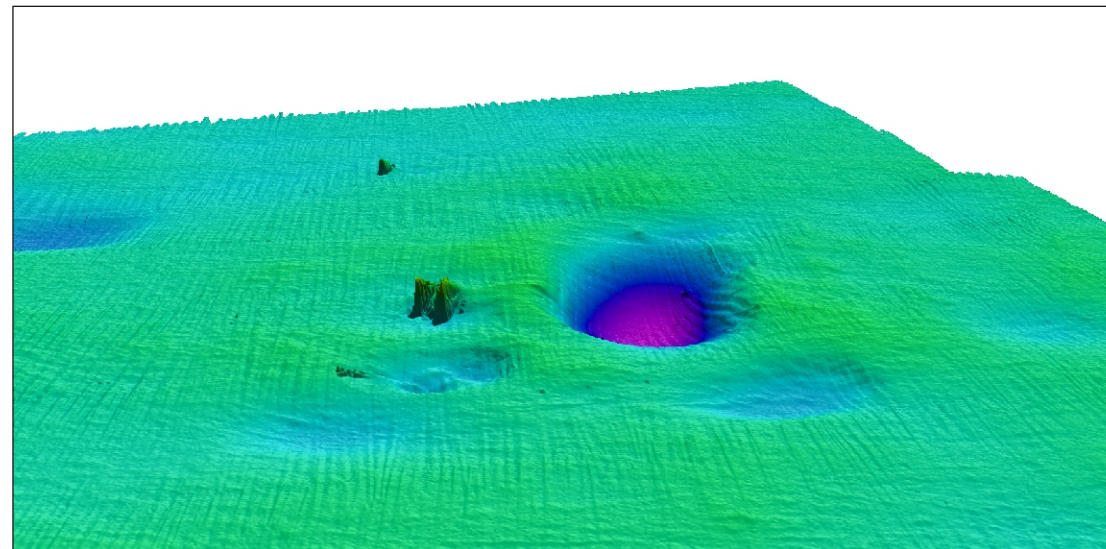


Plate 4: Multibeam image of the *Mary Rose* site, looking south.

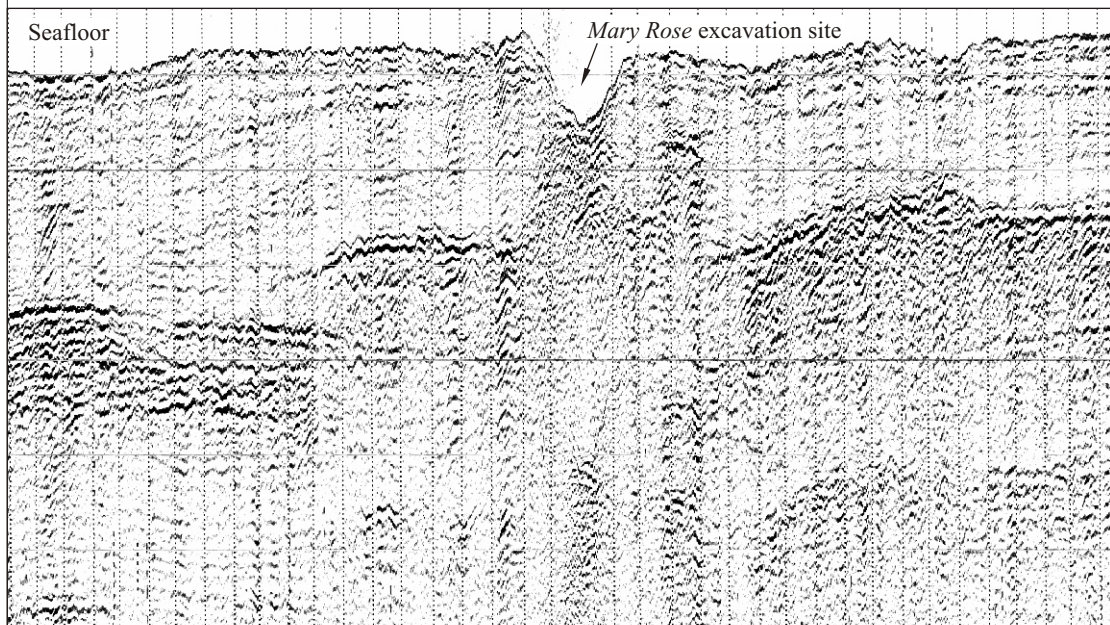
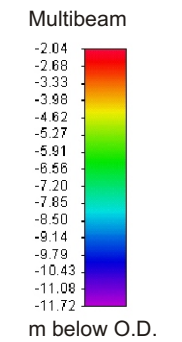


Plate 5: Sub bottom profiler line MR68.

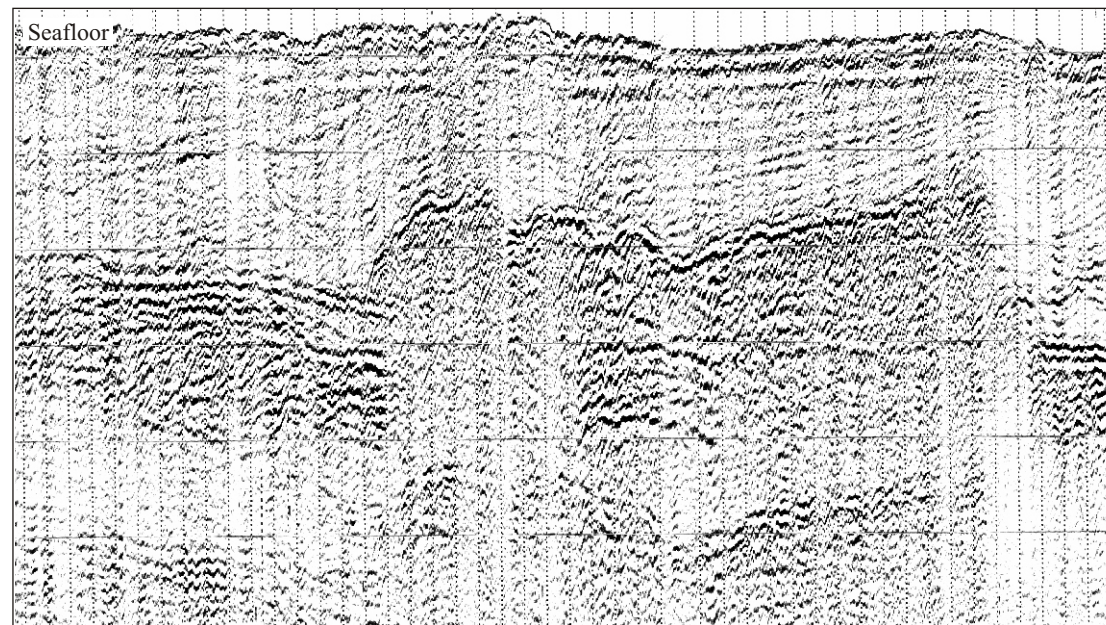


Plate 6: Sub bottom profiler line MR20.



Wessex
Archaeology

| | |
|------------------|---------------------------------------|
| Date: | 11/03/04 |
| Revision Number: | 0 |
| Illustrator: | KMN |
| Path: | W:\51536\Drawing Office\figures\04_03 |