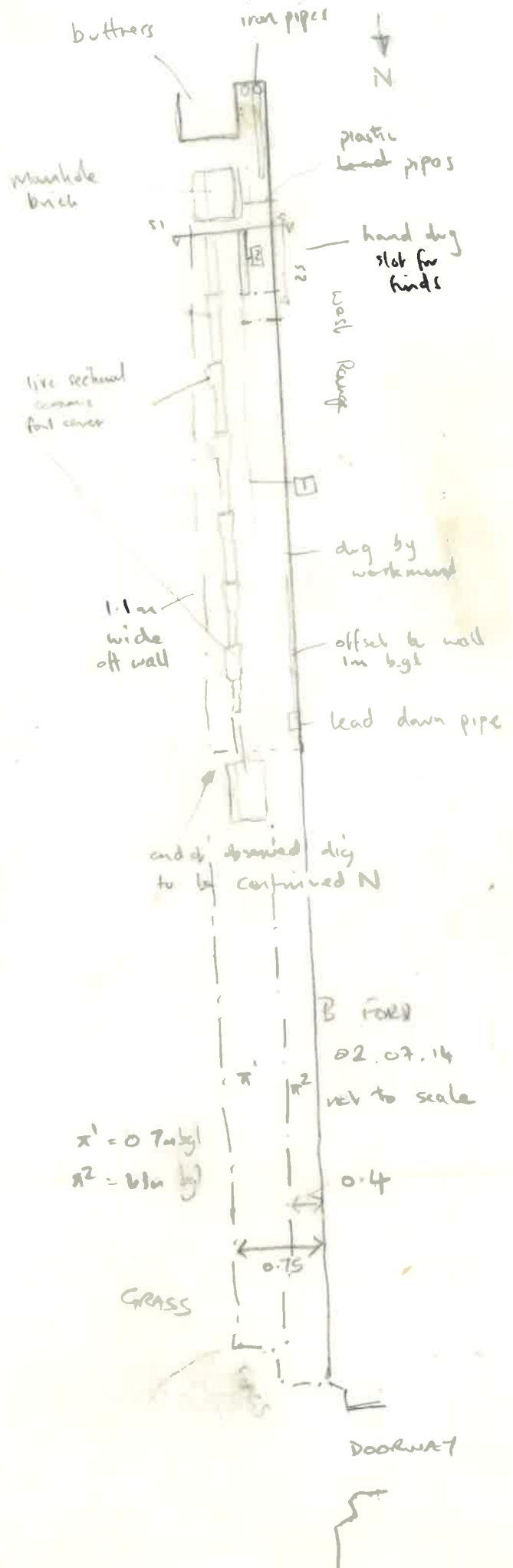
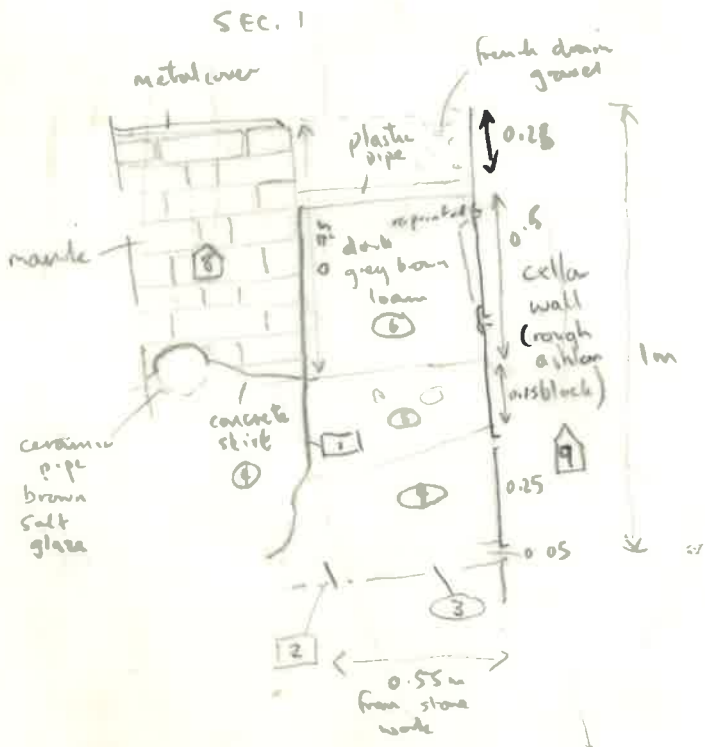


PLAN 1

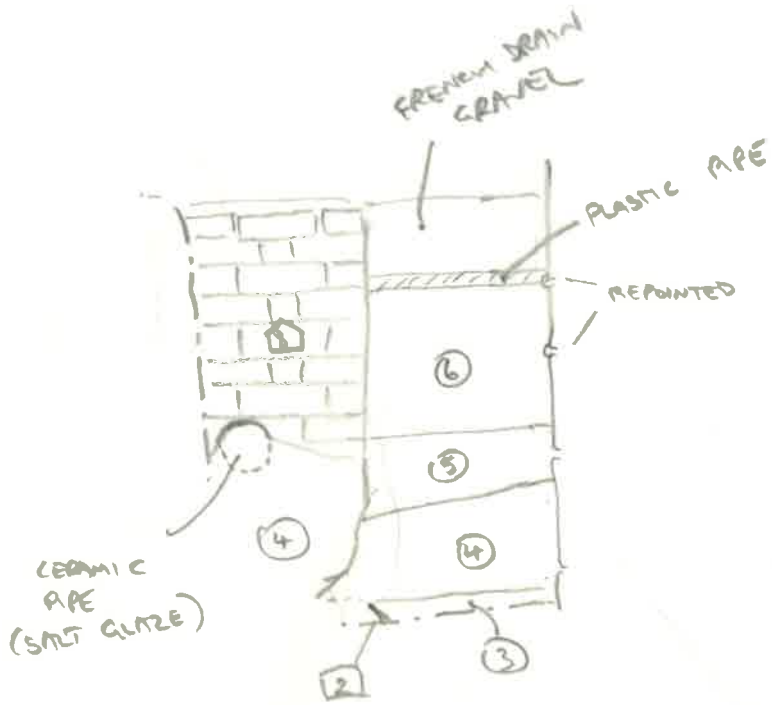


- 1 trench for live sewer
- 2 Cut for construction of cellar? reddish brown silty sand with mortar (const. debris) demolition material
- 3 fine redeposited loam
- 4 stbby motting sandy occ. char-coal, bone pot, CP
- 5 dark grey-brown loam - backfill + existing top-soil
- 6 redeposited rubble in overlying cover pipe trench?
- 7 masonry - brick
- 8 W range of Quad cellar wall stone all 0.2m deep various lengths 0.25 → 0.6m

$x^1 = 0.7 \text{ m}$
 $x^2 = 0.4 \text{ m}$

B FOLD
02.07.14
rel to scale

DOORWAY



OXUCRQ14
 S.1
 1:20
 BF