

Fig. 10 Internal elevation of north and east walls of Wharfinger's House.



Plate 1 General view of exposed joists in the Back West Office. Looking north west (scale 1m).



Plate 2 Detail of wallpaper and remains of lintel of former doorway in Back East Office. Looking south (scale 0.1m).

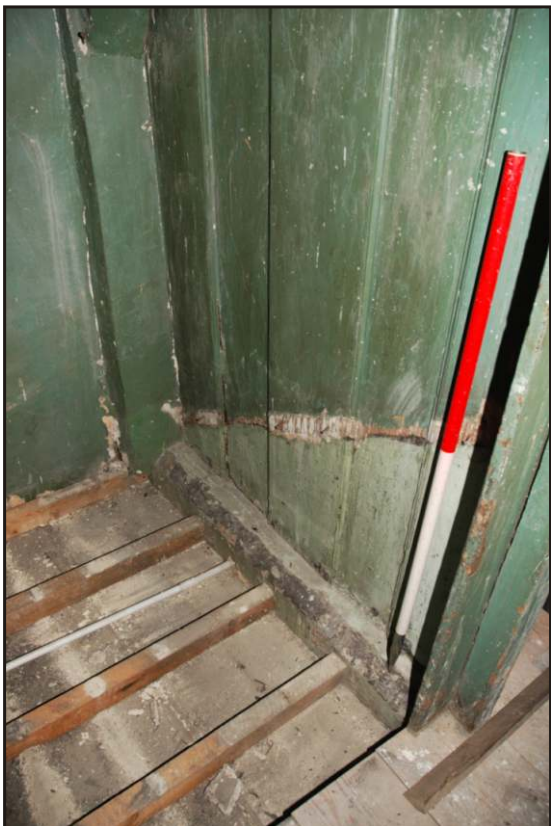


Plate 3 Remains of former stairwell in attic of Wharfinger's House. Looking north west (scale 1m).



Plate 4 Top of rear wall of ground-floor arcade and scarfed joists exposed in the Long Room. Looking west (scale 1m)



Plate 5 Detail of top of rear wall and scarfed joists in the Long Room. Looking north (scale 0.25m)



Plate 6 Detail of sockets of former stud wall in floor of the Front Office, Wharfinger's House. Looking north (scale 0.25m).



Plate 7 General view of exposed joists at the site of the disabled lift shaft in Wharfinger's House. Looking east (scale 1m).



Plate 8 External elevation of the east wall of Wharfinger's House during 1991 alterations, showing a blocked doorway (5038) on right and existing doorway (5013) on left. Looking west.

photo: M.J. Baldwin



Plate 9 Detail of internal elevation of east wall of Wharfinger's House showing blocked doorway (5038). Looking east (scale 1m).



Plate 10 General view of pre-1678 quay surface (5022/3) and postholes (5008-5012). Looking north (scale 1m).



Plate 11 General view of drain in cobbled surface (5022/3). Looking east (scales 1m and 0.25m).



Plate 12 Heavitree breccia foundation (5021) and beam slot (5024) with dividing wall (5017) on left. Looking east (scale 1m).