

**Former Gala Bingo Hall,
22-30 Richmond Road, Kingston-upon-Thames, KT2 5ED**

**Historic Building Record
(Historic England Levels 1-2)**

NGR: 518310 169648



**Commissioned by
CgMs Consulting**



**Former Gala Bingo Hall,
22-30 Richmond Road, Kingston-upon-Thames, KT2 5ED**

**Historic Building Record
(Historic England Levels 1-2)**

NGR: 518310 169648

**Commissioned by
CgMs Consulting**

**Project No. 7533
Site Code: RRK15
Report No. 2015195
OASIS ID: archaeol6-213394**

Prepared by:	Hannah Green BA, MA	Archaeologist	
Reviewed and approved by:	Amy Williamson BA	Project Manager	
Date of Issue:	July 2015		
Revision:	1		

**Archaeology South-East
Units 1 & 2
2 Chapel Place
Portslade
East Sussex BN41 1DR**

SUMMARY

In May 2015 Archaeology South-East (a division of the Centre for Applied Archaeology, University College London) carried out a programme of historic building recording in connection with the development of The Former Gala Bingo Hall, 22-30 Richmond Road, Kingston-upon-Thames, Surrey, KT2 5ED (Fig. 1; NGR 518310 169648; hereafter referred to as 'the site'). The work was commissioned by CgMs Consulting to satisfy conditions attached to planning permission (Planning ref: 13/13017/FUL & 13/13018/LBC) for the redevelopment of the site.

The building was constructed in 1931 as a 'super cinema' replacing an earlier, smaller, silent cinema in the same location. Towards the end of the 20th century its use as a cinema came to an end and it was subsequently converted into a bingo hall and thus altered internally from its original form. The building's original tearoom is in use as a separate dance studio, the remaining areas of the building are currently redundant. The building was Grade II listed in 1993 (Listed Building No.1253350) as an 'early and well-preserved example of an Art Deco cinema from the 1930s, and a good, rare example of the work of a major cinema architect, Robert Cromie' (see Appendix 1).

This work compliments a Heritage Statement produced by Indigo Planning (January 2014) and an Archaeological Desk-Based Assessment by CgMs Consulting (July 2013) previously produced for the site.

CONTENTS

List of Plates

List of Figures

- 1.0 Introduction
- 2.0 Scope and Methodology
- 3.0 Site Location
- 4.0 Historic Background
- 5.0 Description of the Building
- 6.0 Discussion
- 7.0 Sources Consulted
- 8.0 Deposition of the Archive
- 9.0 Acknowledgements

Plates

Figures

Appendix 1 Listing Description

Appendix 2 Index of Digital Photographs

Appendix 3 OASIS Data Collection Form

LIST OF PLATES

- Plate 1:** Exterior view of west elevation, facing north-east (7533_0001)
- Plate 2:** Exterior, detail of Art Deco niche and door arrangement on west elevation, facing east (7533-0003)
- Plate 3:** Exterior, west elevation, detail of door buttress and metal tie, facing south-east (7533-0004)
- Plate 4:** Exterior, west elevation, foundation stone detailing, facing east (7533-0006)
- Plate 5:** Exterior, west elevation, principal entrance detail, facing east (7533-0007)
- Plate 6:** Exterior, general view of south elevation, facing north-east (7533-0008)
- Plate 7:** Exterior, detail of Crittall-style window arrangement, facing north (7533_0009)
- Plate 8:** Exterior, general view of obscured north elevation, facing south-east (7533_0013)
- Plate 9:** Exterior, view of central section of east elevation, facing west (7533_0011)
- Plate 10:** Exterior, view of northern end of east elevation (eastern wing), facing south-west (7533_0012)
- Plate 11:** Exterior, northern end of east elevation (eastern wing), door opening arrangement (7533_0017)
- Plate 12:** Ground floor, entrance lobby, principal doorway, facing west (7533_0019)
- Plate 13:** Ground floor, entrance lobby and location of former pay office, facing north-east (7533_0021)
- Plate 14:** Ground floor, entrance hall and lobby, facing west (7533_0024)
- Plate 15:** Ground floor, eastern end to entrance hall and stairs to balcony (former balcony pay box – now redundant), facing east (7533_0028)
- Plate 16:** Ground floor, entrance hall, iron supports formerly encased in fluted plaster column, facing south-west (7533_0026)
- Plate 17:** Ground floor, entrance hall, eastern balcony stair, facing east (7533_0030)
- Plate 18:** Ground floor, auditorium, detail of balcony construction, facing north-east (7533_0033)
- Plate 19:** Ground floor, auditorium, detail of balcony construction, facing west (7533_0035)
- Plate 20:** Ground floor, view of auditorium and balcony, facing south (7533_0045)
-

- Plate 21:** Ground floor, auditorium, detail of proscenium arch and former stage area, facing north (7533_0036)
- Plate 22:** Ground floor, auditorium, detail of Greek key design on proscenium arch, facing north-west (7533_0040)
- Plate 23:** Ground floor, auditorium, proscenium arch stepped plaster detailing, facing north-east (7533_0043)
- Plate 24:** Ground floor, auditorium, Art Deco niche detailing, facing west (7533_0039)
- Plate 25:** Ground floor, auditorium, oval plaster moulded ceiling, facing north (7533_0042)
- Plate 26:** Ground floor, auditorium, lion's head plaster mould detail, facing north (7533_0063)
- Plate 27:** Ground floor, auditorium, western corridor with external door opening and WC, facing north (7533_0100)
- Plate 28:** First floor, staff room and WC, facing south-east (7533_0097)
- Plate 29:** Ground floor, view of western side of auditorium, facing north-west (7533_0037)
- Plate 30:** Ground floor, former stage area with loading gallery and counterweight scenery lines, facing west (7533_0044)
- Plate 31:** Ground floor, former stage roof and skylight, facing east (7533_0047)
- Plate 32:** First floor, eastern access stairwell, facing north-east (7533_0094)
- Plate 33:** First floor, western access corridor and WC, facing north (7533_0099)
- Plate 34:** Third floor, view of balcony, facing south-east (7533_0059)
- Plate 35:** Third floor, northern face of balcony visible from the auditorium, facing south-east (7533_0048)
- Plate 36:** Third floor, view of balcony and arcade plasterwork to east wall, facing north-east (7533_0069)
- Plate 37:** Third floor, balcony, original light fitting, facing north-east (7533_0062)
- Plate 38:** Third floor, balcony, moulded plasterwork detailing, facing east (7533_0058)
- Plate 39:** Third floor, rear of balcony with Greek key design downstand patterning and attendant seat alcoves, facing west (7533_0065)
- Plate 40:** Third floor, balcony, projection ports within the southern wall, facing south-west (7533_0067)
-

- Plate 41:** Third floor, balcony, oval moulded plasterwork ceiling, facing east (7533_0060)
- Plate 42:** Second floor, east wing, view of enclosed staircase, facing west (7533_0102)
- Plate 43:** Ground floor, facing east wing; note electrician's gallery, facing east (7533_0046)
- Plate 44:** First floor, east wing, view of access corridor, facing north (7533_0104)
- Plate 45:** Third floor, east wing, dressing room door detailing, facing south-east (7533_0110)
- Plate 46:** First floor, east wing, view of dressing room, facing south-east (7533_0114)
- Plate 47:** First floor, east wing, view of chorus room containing stage light casing, facing east (7533_0109)
- Plate 48:** First floor, east wing, plenum and intake room door detailing, facing east (7533_0103)
- Plate 49:** Third floor, east wing, intake room containing original projection equipment, facing north (7533_0108)
- Plate 50:** Third floor, east wing, plenum chamber and ventilation equipment, facing south-east (7533_0112)
- Plate 51:** Third floor, east wing, detail of plenum chamber ventilation equipment, facing south-east (7533_0113)
- Plate 52:** Third floor, east wing, detail of plenum chamber and intake room beyond, facing north-east (7533_0111)
- Plate 53:** Fourth floor, east wing dressing room detail, facing east, (7533_0105)
- Plate 54:** Second floor, west wing, former band room, facing south (7533_0101)
- Plate 55:** Ground floor, southern wing, western access stair, facing west (7533_0051)
- Plate 56:** Ground floor, southern wing, electrical intake room, facing west (7533_0052)
- Plate 57:** First floor, southern wing, western access corridor, facing north (7533_0053)
- Plate 58:** First floor, southern wing, western corridor window arrangement, facing west (7533_0092)
- Plate 59:** First floor, southern wing, plaster moulding to balcony support pillars, facing east (7533_0054)
-

- Plate 60:** First floor, southern wing, detail of glazed door panel, facing south (7533_0056)
- Plate 61:** First floor, southern wing, eastern access corridor, glazed door detail and 'Circle' signage, facing north-east (7533_0096)
- Plate 62:** Second floor, southern wing, eastern access stair, facing east (7533_0091)
- Plate 63:** Second floor, southern wing, angled office to western end, facing south-west (7533_0086)
- Plate 64:** Second floor, southern wing, office to eastern end, facing south-east (7533_0090)
- Plate 65:** Second floor, southern wing, former male WC, facing south (7533_0089)
- Plate 66:** Second floor, southern wing, access corridor, facing east (7533_0087)
- Plate 67:** Second floor, southern wing, glazed panelling to corridor, facing south-east (7533_0088)
- Plate 68:** Third floor, southern wing, male WC with original fittings, facing west (7533_0084)
- Plate 69:** Third floor, southern wing, female WC with original fittings, facing south-west (7533_0083)
- Plate 70:** Third floor, southern wing, female WC, cubicle and fitting detail, facing south (7533_0082)
- Plate 71:** Third floor, southern wing, store room with exhaust chamber beyond, facing east (7533_0081)
- Plate 72:** Ground floor, external view of exhaust chamber from the auditorium, facing south-east (7533_0034)
- Plate 73:** Third floor, southern wing, projector generator room, facing north-west (7533_0080)
- Plate 74:** Fourth floor, southern wing, electrical/lighting and sound chamber, facing west (7533_0070)
- Plate 75:** Fourth floor, southern wing, projection chamber, facing east (7533_0077)
- Plate 76:** Fourth floor, southern wing, projection chamber, detail of original projection equipment, facing south-west (7533_0075)
- Plate 77:** Fourth floor, southern wing, projection chamber, detail of original projection equipment, facing north-west (7533_0076)
- Plate 78:** Fourth floor, southern wing, extract fan chamber, facing south-east (7533_0072)
- Plate 79:** Fourth floor, southern wing, repair room and electrician's store beyond, facing south-east (7533_0073)
-

LIST OF FIGURES

- Figure 1** Site Location
- Figure 2** Site Plan
- Figure 3** Tithe Map – 1840 (supplied by client)
- Figure 4** Ordnance Survey Map of 1865 (supplied by client)
- Figure 5** Ordnance Survey Map of 1895 (supplied by client)
- Figure 6** Ordnance Survey Map of 1911 (supplied by client)
- Figure 7** Ordnance Survey Map of 1956 (supplied by client)
- Figure 8** Photograph of the cinema entrance with original canopy under ABC ownership (c.1960s)
- Figure 9** Ordnance Survey Map of 1986 (supplied by client)
- Figure 10** Photograph of west elevation with Coral Bingo Hall signage (c.1970s)
- Figure 11** Photograph of the Coral Bingo Hall interior, view from balcony (1988)
- Figure 12** Photograph of the balcony seating and table alterations made under Coral ownership (2009)
- Figure 13** Photograph of the Gala Bingo Hall interior, view of auditorium (2009)
- Figure 14** View of former tearoom (Kingston Dance Studio)
- Figure 15** Original architect plans – 1931 (West and South Elevations)
- Figure 16** Original architect plans – 1931 (Ground Floor)
- Figure 17** Original architect plans – 1931 (Second Floor)
- Figure 18** Original architect plans – 1931 (Third Floor)
- Figure 19** Original architect plans – 1931 (Fourth Floor)
- Figure 20** Existing Ground Floor Plan and Photo Locations
- Figure 21** Existing First Floor Plan and Photo Locations
- Figure 22** Existing Second Floor Plan and Photo Locations
- Figure 23** Existing Third Floor Plan and Photo Locations
- Figure 24** Existing Fourth Floor Plan and Photo Locations
-

1.0 INTRODUCTION

- 1.1 In May 2015 Archaeology South-East (a division of the Centre for Applied Archaeology, University College London) carried out a programme of historic building recording in connection with the development of The Former Gala Bingo Hall, 22-30 Richmond Road, Kingston-upon-Thames, KT2 5ED (Fig. 1; NGR 518310 169648). The work was commissioned by CgMs Consulting to satisfy conditions attached to planning permission (planning refs: 13/13017/FUL & 13/13018/LBC) for the conversion of the majority of the existing building into a mixed use development including a cinema, restaurant, cafe, children's play centre and offices, with associated landscaping and basement parking. Three additional floors will be constructed to accommodate 14 residential units. In addition, the demolition of the eastern block will allow the provision 15 apartments and office space.
- 1.2 The Archaeological Advisor (GLAAS) to the Royal Borough of Kingston-upon-Thames has requested that the planning permission be placed under condition requiring building recording to be carried out prior to the commencement of the site's redevelopment, which is detailed in the corresponding written scheme of investigation produced by Archaeology South-East (May 2015).
- 1.3 The building was constructed in 1931 as a 'super cinema' replacing an earlier, smaller, silent cinema in the same location. Towards the end of the 20th century its use as a cinema was dwindling in line with a national downturn in cinema attendance and was subsequently converted into a bingo hall. The building's original tearoom is currently in use as a separate dance studio, while the remaining areas of the building are currently redundant.
- 1.4 The building was Grade II listed in 1993 (Historic England, National Heritage List, Listed Building No.1253350) as an 'early and well-preserved example of an Art Deco cinema from the 1930s, and a good, rare example of the work of a major cinema architect, Robert Cromie' (see Appendix 1). The site does not lie within or close to a Scheduled Monument or Conservation Area.

2.0 SCOPE & METHODOLOGY

- 2.1 The scope of work and methodology for the building recording is detailed in a written scheme of investigation produced for the work by Archaeology South-East, dated May 2015. The work was also carried out in accordance with the relevant ClfA standards and guidance.
 - 2.2 The Archaeological Advisor (GLAAS) to the Royal Borough of Kingston-upon-Thames recommended that the building be subject to a Historic England Level 1-2 record as defined in *Understanding Historic Buildings: A guide to good recording practice* (English Heritage 2006a). A Level 2 record is principally a descriptive survey of the exterior and interior of the buildings.
 - 2.3 The site was visited by Hannah Green and Katya Harrow on the 19th May 2015 in order to carry out the recording work. This entailed the compilation of written notes and the production of a photographic record. The written record
-

includes a basic description of the building's architect, location, form, function (historically and at present), date and sequence of development.

- 2.4 The drawn record comprises floor plans of the building as existing to illustrate its layout. These plans were provided by CgMs Consulting and produced as part of the planning application; they have been verified for their accuracy and amended (where necessary) during the recording exercise. The measured survey drawings are included within the report as Figs. 20 - 24.
- 2.5 The photographic record was produced using high-quality digital photography and includes images of both the exterior and interior of the structure, to give an overall impression of its size, shape and appearance of principal rooms and circulation areas. Within the report selected digital images have been reproduced as plates to supplement the descriptive text. A full index of the photography is included as Appendix 2 and location plots shown on the accompanying figures.
- 2.6 During the survey there were health and safety concerns with the presence of asbestos on site and areas of structural failure, primarily within the boiler house within the eastern wing and a limited area on the fourth floor of the western wing. In addition, the Kingston Dance Studio occupying the former tearoom at first floor level (towards the southern end of the building) forms separate premises and as such does not form part of this record; a basic description of its form has been included within the listing application (see Appendix 1). In general, where detailed inspection was not possible, a basic layout description has been formulated from the original architect plans produced in 1931 (provided as Figs. 15-19).
- 2.7 A study of relevant cartographic sources was undertaken in order to place the building within its historical context, together with the consultation of previous reports produced for the site, including: a Heritage Statement produced by Indigo Planning (January 2014) and an Archaeological Desk-Based Assessment by CgMs Consulting (July 2013). All sources consulted are listed in Section 7.
- 2.8 Further primary and secondary research and archive material for both the site and for the topic of 'super cinemas' in general, is available at the Kingston Museum and Heritage Service, the Surrey County Record Office and from the Cinema Theatre Association and Cinema Organ Society.

3.0 SITE LOCATION

- 3.1 The site occupies a roughly rectangular piece of land covering an area of approximately 1912 square metres. The site lies within the Royal Borough of Kingston-upon-Thames, centred at NGR 518310 169648 (Fig. 2). The site lies approximately 600m east of the current bank of the River Thames and is located within an urban area, comprising a mix of residential and industrial units. The site is bound to the east by the Canbury Business Park, to the south by Canbury Park Road, to the west by Richmond Road and to the north by Cowleaze Road; the principal elevation of the building faces west.
-

4.0 HISTORIC BACKGROUND

- 4.1 The historic background of the site has previously been covered by the Heritage Statement (Indigo Planning 2014) and Archaeological Desk-Based Assessment (CgMs Consulting 2013). The following information is summarised from these two documents and includes additional information provided by the Cinema Theatre Association.
- 4.2 The tithe map of 1840 (Fig. 3) shows the early development of the site, which at that time comprised a building set at an angle within the south-western corner of the site, and a series of smaller dwellings extending northwards alongside Richmond Road. The 1865 Ordnance Survey map shows the site in a better level of detail (Fig. 4); this shows the properties along Richmond Road to have consisted of two pairs of semi-detached houses to the north of the dwelling on the corner. Cowleaze Road is first shown on this map, either side of which a series of new dwellings had been built. A semi-detached pair of houses on Cowleaze Road is shown located within the site boundary.
- 4.3 The Ordnance Survey map of 1895 (Fig. 5) shows little change. By the completion of the 1911 Ordnance Survey (Fig. 6), the building on the corner is no longer shown, and the site had been redeveloped as the Cinem [sic] Palace (which opened on 4th December 1909) with the large central hall ice rink located to the east. It was acquired by the County Cinema Circuit soon after its conversion to sound by 1930 and demolished between May and June 1931.
- 4.4 The Regal Cinema was constructed in its place, as shown on the Ordnance Survey of 1934 (not reproduced due to insufficient scale), with a capacity of 2,445 patrons. The Regal Cinema opened in 15th February 1932, with the films 'Splinters of the Navy' and 'Keepers of the Youth' with a Laurel and Hardy short 'The Wives'. The building formed one of a wave of new 'super cinemas' that developed in response to the increased technical demands of showing talking movies and a more diverse clientele. The cinema comprised a tearoom at upper level, with small stage and sprung dance floor (for ballroom use) to the rear of the auditorium, with dressing rooms and office areas to the north-east corner. The building, defined as a 'Picture Theatre', is shown as two clearly defined ranges at this date, the primary block to the south and the additional range to the north-east corner. The building is clearly depicted on the 1956 Ordnance Survey map (Fig. 7).
- 4.5 The Regal Cinema was designed by Robert Cromie, a successful cinema architect of the period, whose work includes the Grade II* listed Hammersmith Apollo Theatre (formerly the Gaumont Palace), a particularly good example of his characteristic Art Deco designs. The cinema originally contained a three manual, 12 rank Wurlitzer Pipe Organ and an orchestra pit holding 30-40 musicians, with a stage to the northern end. The organ was played by great organists of the day and was regularly broadcast; it was damaged in an air raid in October 1940 but is believed to have remained in-use post-war, with Joseph Seal, ABC's Head of Music, using it to record 'playing out' music for all the ABC cinemas (Cinema Theatre Association, pers. comm.). The organ continued to be played throughout the 1960s and in 1972 the organ was removed to the National Musical Museum at Brentford. The building also held
-

large concerts and stage productions throughout its history, including the Kingston Variety of 1954 (Grundy, I).

- 4.6 The cinema went through various changes of ownership, County Theatres became part of Union Cinemas in 1936 and the name changed to 'Union Cinema, Kingston' in March 1937. Associated British Cinemas (ABC) subsequently acquired the cinema in October 1937, following the bankruptcy of Union Cinemas due to overspending on their cinemas. The cinema's name reverted back to 'The Regal' c.1939 until its 'ABC' branding in 1961 (Fig. 8). ABC became the largest single cinema chain in Britain, until the outbreak of World War II brought construction to a halt.
- 4.7 The building suffered bomb damage in 1940, which affected the roof and organ chambers to the north; both were repaired. The decline in demand for large auditoria following the war, led to the cinema's closure on 17th July 1976. The building was immediately converted into a Coral Bingo Club, the change in purpose being recognised on the 1986 Ordnance Survey map (Fig. 9). The ground level auditorium and balcony seating was removed to allow for the installation of a new paint scheme, new tables, seating and staircases, in addition to the extension of floor space to the front of the balcony (see Figs. 10-12). The Coral chain was taken over by Gala during the early 1990s and subsequently redecorated (Fig. 13). The building was listed Grade II in 1993 (see Appendix 1). The building was closed in April 2010 and the majority of the building is currently redundant, with the Kingston Dance Studio utilising the former tearoom to the south (Fig. 14).

5.0 DESCRIPTION OF THE BUILDING

Overview

- 5.1 The building is roughly rectangular in plan with an additional block projecting northwards from its north-east corner. The building is aligned north-south, with its principal elevation facing west onto Richmond Road and a secondary entrance facing south onto Canbury Road. It is constructed with English-bonded orange-brown brick with a rendered and banded plinth at ground level to the west and south sides. All windows to the west and south elevations comprise Crittall-style windows with a flush soldier course head and a projecting brick cill. The windows housed within the east and north elevations are similar in their style but have a concrete head and cill. All visible door openings (those not covered externally by timber boarding) are of a modern flush metal construction.

Exterior

West Elevation

- 5.2 The building's principal (west) elevation has remained relatively unaltered since its construction (Fig. 15). The elevation is comprised of a substantial rendered band at ground level, which forms an imitation stone plinth to a tall, largely blind façade. The elevation is divided by nine pilasters, forming eight bays under a linked concrete band, with soldier course head and fluted concrete cornice above (Plate 1). Housed within each end and intermediate bay is a stepped or 'fountain style' Art Deco niche within which a tilting centre-
-

hung Crittall-style window is located (Plate 2). To either side of the bayed centre is a single narrow window at first floor level. Situated to the far northern end are three additional single windows extending from first floor and lighting an internal staircase within. At ground level, the rendered banded plinth is interrupted by five double-leaf door openings and an additional mock opening of identical arrangement, presumably added to create a symmetrical appearance. An additional single-leaf door opening is located to the far northern end. Each double door opening is flanked by a pair of substantial rendered concrete buttresses with stepped capping detail, each secured with an additional flat steel tie bar (Plate 3).

- 5.3 The main entrance protrudes westwards at the southern end and comprises four pairs of double doors (covered externally with timber boarding), accessed via four tiers of tile-covered steps from street level. The entrance is flanked on either side by a single stepped niche housed within a fluted concrete surround with wave header detailing. Immediately to the north of the entrance is a carved foundation stone, reading 'Robert Cromie Architect 1932' (Plate 4). The original canopy comprised a triangular appearance of metal construction and can be seen in Fig. 8. The original canopy has since been replaced by a modern alternative, the remains of which reveal a flush modern plastic-covered steel-framed construction. Above the entrance is a faience tile surround, comprising four stylised Ionic pilasters with wave and floral plaster motifs in between. The lower half of each resulting niche houses a narrow window (Plate 5).
- 5.4 The far southern end sits at an angle to the remaining elevation face and is arranged over four floors, topped with a continuation of the fluted concrete cornice at the fourth storey. A single window to the north and east overlooks the flat roof at third floor level. An additional single window is located centrally at the first and second floors.

South Elevation

- 5.5 The south elevation is arranged over five storeys with a projecting eastern end (Plate 6). The rendered banded plinth located on the west elevation continues on this side and contains three double doors at ground level, with the easternmost door providing access to the separate dance studio within. An additional single-leaf door is situated to the western end. An expanse of later concrete infill to the central section, which is now filled with two windows of modern construction, indicates the location of the former paired double door opening evident on the architect plans drawn in 1931 (Fig. 15).
- 5.6 The western end comprises four narrow windows extending from the first floor, topped with a fluted concrete cornice above. At first and second floor levels, the central section comprises a mirrored arrangement of a trio of tall windows each of which includes an upper fixed light above (Plate 7); the third floor contains a series of three shorter casement windows. A series of three narrow windows are located to the east and west sides, lighting two internal staircases. Above, at fourth floor level is a balcony with tubular steel guard rail with rendered base below. The balcony is accessed by three single-leaf door openings, separated by four narrow windows.
- 5.7 The projecting eastern end is dominated by a modern glazed metal shop front with double door within the western corner. Original architect plans (Fig. 15)
-

note a featureless plinth occupying the ground floor at this end, with future plans to accommodate a secondary entrance to a skating rink located to the east. Above the ground floor are six slender windows, arranged over the first, second, third and fourth floors, the sixth window at each floor level is offset to the east.

North Elevation

- 5.8 The majority of what remains of the north elevation is obscured by the construction of modern commercial premises. All that remains visible for inspection is a small section to the far eastern end (Plate 8). The relatively featureless brick façade is arranged over five storeys with a series of twinned narrow windows extending above ground level at each floor, one of which is now infilled at first floor level. To the eastern extent are an additional three windows of similar arrangement. At ground level is a former single window opening which is now infilled.

East Elevation

- 5.9 The majority of the eastern elevation comprises a tall expanse of plain English-bonded Fletton brickwork, divided by substantial brick pilasters towards its southern and central sections (Plate 9).
- 5.10 To the far southern end are four pairs of 12-pane windows. At ground floor the elevation protrudes eastwards and is constructed in an orange-red brick laid in stretcher bond; this presumably denotes a later addition, perhaps linked to a former building which adjoined the building's eastern wall.
- 5.11 The northern end of the elevation extends eastwards from the main building and houses the boiler house at ground level with associated two-tiered chimney. This end is particularly plain in its appearance, reflective of its utilitarian nature. The elevation comprises five storeys, divided by six giant brick pilasters, creating six bays of varying width (Plate 10). Each bay houses a series of windows of similar style to those found to the southern end, from first floor upwards. Situated to the northern end at the third floor is a large vented opening, with associated pipework fixed externally to the south, which provides ventilation to the plenum and intake room beyond. At ground floor are a series of six doorway openings, all of varying sizes (Plate 11), each separated by windows of varying size (five in total). A large blocked opening situated to the northern end contains a hatch door at basement level, presumably to load fuel for the boiler house beyond. The central double-width door has been blocked in recent years to accommodate a single-leaf door and window (both infilled). Two large double-height door openings, with metal grate shutters, fill the southern extent, the largest of which provides access to the backstage docking area via a passage and secondary opening of similar construction.

Interior

Overview

- 5.12 Internally, the building follows a roughly rectangular plan and is dominated by a substantial double-height hall, with separate entrance foyer located to the south. The hall originally accommodated 1390 stalls, forming the cinema
-

auditorium and an orchestra well situated at the foot of a stage to the north. The former stage with skylight above has since been removed but originally ran 27 metres wide, with a c. 21 metre wide screen. The orchestra well has also been lost in recent years but original architect plans (Fig. 16) note its capacity at accommodating 30-40 musicians. The rear of the hall is filled at its upper level by a large tiered balcony, accessed from foyers over two levels; the upper one with tea room now serves as a separate dance studio and as such has not been included in this survey (See Appendix 1 for listing details). The balcony has undergone several alterations since its construction, most notably its extension northwards to accommodate additional floor space and the construction of two additional stairways to the east and west sides, creating separate access from the stalls.

- 5.13 In addition to the principal hall and entrance areas, a series of circulatory passageways, housing a variety of ancillary functions, are located to the northern end to either side, to the rear of the stage and along the southern elevation. All three additional wings extend over five storeys and are significantly plainer in their appearance, reflecting their utilitarian nature. The earlier functions of many of the back rooms within the three blocks is uncertain and some were presumably left redundant during the building's use as a bingo hall; as such all noted former room uses within the internal description relate to their original intended purpose during the building's use as a cinema.
- 5.14 As a general note, the internal alterations following the building's conversion to a bingo hall also incorporated the comprehensive redecoration of the original paint scheme of pale green, gold and lacquered silver, to cream, maroon and blue (during its occupation as the Coral Bingo Club) (see Fig. 11) and latterly yellow, blue and gold (during its phase as a Gala Bingo Hall) (Fig. 13). Evidence of all three decorative schemes can be seen throughout the building. The floor has been lowered and walls removed following previous construction work, as a result the floor level within the auditorium has been significantly lowered from its original level and areas of plasterwork, primarily within the entrance foyer and underneath the balcony have been removed. All walls are rendered with a painted plaster finish unless otherwise stated.

Ground Floor

- 5.15 The building's principal entrance is located to the far southern end of the west elevation (Plate 12). A set of four paired double-glazed metal frame doors open into an entrance lobby, comprising painted plastered walls with wide moulded cornice detailing. A tripartite ceiling with fluted moulding to the east and west sides house a series of modern light fittings. The lobby has been opened out to create a large open plan area but originally formed a separate space, separated from the entrance foyer by a secondary set of doors that were identical in arrangement to the main external entrance. All that remains of this original arrangement are two retained brick support pillars that divide the internal spaces and would have secured the secondary set of doors. To the immediate north of the lobby is a partially infilled wall (Plate 13) (now knocked through into the main auditorium), with a rounded plaster border. This presumably once adorned the former box office pay desk originally housed within this location.
-

- 5.16 The lobby leads through into the entrance foyer located to the east (Plate 14). The fibrous plaster ceiling has a plasterboard alcove to the central square shaped apex, bordered by deep moulded corners. The room's original square proportions are visible through a retained wide cornice with wave-moulded finish, which runs around the room's perimeter. An ephemeral timber cabin to house the current construction works has filled the external southern entrance. To the immediate west is a fire exit with original signage above. To the north side of the foyer there are two rendered brick support pillars. These serve to illustrate the original former location of a central kiosk stand flanked by two separate double door entrances entering the auditorium (complete with mat stands, see Fig 16). A single 'I' section iron girder supports the timber framed downstand separating the eastern end of the foyer with separate ticket office and balcony pay box to the far south-east corner, now a redundant door opening to a reconfigured external staircase serving the separated dance studio (tearoom) above (Plate 15). The former locations of four fluted columns along this downstand are evidenced by four redundant circular openings at ceiling level (Plate 16). To the far eastern end is a moulded opening to a staircase beyond. The stepped entrance retains evidence of a former plaster moulding and earlier decorative schemes (Plate 17). The entrance leads through into a cloakroom and counter to the north and a stairway extending to the tearoom and balcony above.
- 5.17 The original entrance to the auditorium was to the east and west sides, each with associated attendant seat alcoves (now removed). Due to removal of plaster finishes to the rear of the hall, the construction of the tearoom and balcony is visible; comprising reinforced concrete wood cast panelling set within an iron and steel plate framework with angled iron support girders (Plate 18). The bottom tier to the balcony has been built out and is constructed with large riveted steel plates, manufactured in West Bromwich by Braithwaite & Co. in 1965 (Plate 19). This was presumably linked to the balcony's alteration and extension during its occupation as the Coral Bingo Club, to accommodate additional booth and table seating (Fig.11)

Auditorium

- 5.18 The main auditorium has lost its original cinema seating and replacement bingo table arrangement due to the lowered floor level. As such, the majority of the description is focused primarily on the retained wall and ceiling features (see Section 5.14). Floor plans suggest the original seating could accommodate up to 1390 individuals, the central 23 tiers were flanked on either side by a front set of 12 rows and a rear set of 22 (Figs.16 &19).
- 5.19 The double-height hall (Plate 20) has a substantial proscenium arch to its northern end, decorated with a rhythmic modified Greek key design constructed of fibrous plaster (Plates 21 & 22). This detailing was originally repeated in the area under the balcony but it has since been removed. The arch is finished with a stepped inner edge (Plate 23). The walls either side of the former stage and orchestra well location, are finished with a full-height plaster fluting with a central Art Deco 'fountain' style niche. Each niche is decorated with floral and wave motif mouldings (Plate 24) and open out at ground level. These decorative niches conceal two ante-proscenium ventilation voids and the former location of the organ chambers. A large wavy oval inset cove is located centrally to the ceiling (and originally beneath the balcony), made of fibrous plaster with plasterboard panelling to flat sections of
-

the apex (Plate 25). A central stylised lion's head plaster moulding at ceiling level demarcates the stalls and upper circle seating within the hall (Plate 26). The northern end of the auditorium is lit by a variety of modern light fittings. A series of modern blade fans have replaced the original ventilation system.

- 5.20 The main area of the auditorium is accessed externally by a four double doors to the east and west sides, linked by a corridor running parallel to the external elevations (Plate 27). A male (west side) and female (east side) toilet were located to the far northern end of each side passage, with additional WC and staff rooms (Plate 28) located above the female toilet at the first and second floor. An additional room to the east side, accessible from both the auditorium and backstage area, was used formerly as the stage manager's office. Two additional staircases have been inserted unobtrusively towards the southern end of the auditorium to the east and west sides within each passage, creating additional access and fire exit routes to the balcony circle seating (Plate 29).
- 5.21 The backstage area is unsurprisingly significantly plainer in its appearance, with an English-bonded featureless brown brick wall. The brick has a painted concrete render at ground level and is undressed above (Plate 30). The northern wall is divided by six giant brick pilasters that extend to a steel grid framework at roof level, above which a combination of corrugated metal and plastic sheeting cover a former skylight (now removed) (Plate 31). The west side houses an equipment loading gallery at second floor, with 17 counterweight lines for moving scenery. The east side comprises a small concrete balcony, formerly built as an electrician's gallery, at second floor, situated above a large double-height opening forming the stage dock at ground level.

Balcony

- 5.22 The balcony (Fig. 23) is located towards the southern end of the auditorium, accessed originally from the south by two large openings and to the rear east and west sides via relatively featureless stairways with painted plaster covered brick walls and lino flooring (Plate 32). The latterly inserted stairs located either side to the front of the balcony, provide access to the former stall seating at ground level. An additional phase of development includes the levelling of the front three tiers of the balcony to create a deep single level which formed a series of semi-circular bays of bench seating (Fig. 11), a series of small tables were also inserted between seats for bingo use. To the east and west sides of the balcony are two separate corridors leading to a male (west) and female (east) toilet (Plate 33).
- 5.23 The balcony comprises a stepped reinforced concrete floor, rising in tiers towards the southern end (Plate 34). The front five tiers are proportionally wider than those to the south and fronted by a wide level floor to the north. The front tier is guarded by a series of steel uprights and guard rail. The tiered flooring is divided by three equally spaced stepped access routes. The floor most recently had a wood covering, as is evident by a small area of retained timber boards to the west side. All former seating no longer remains *in-situ* (see Fig. 11 for tiered seating arrangement).
- 5.24 The curved front face of the balcony is decorated with a fluted plaster moulding, with a repeating stepped panelled design dividing the elevation into
-

a series of equidistant bays, each housing an Art Deco inspired geometric moulding. Each intermediate panelled moulding houses a four tiered up-light (Plate 35).

- 5.25 Arcading to the front of the east and west side walls comprises six fluted pilasters (Plate 36), topped with an original metal-framed light fitting, with stylised sunbeam and cloud detailing to the glazed panels (Plate 37). Each pilaster is filled with a moulded fibrous plaster panel with ornate floral motif (Plate 38). Above is a shallow moulded plaster cornice displaying three separate tiered decorative finishes and a central panel with moulded lion's head mask. The southern rear walls have been stripped of their plaster finishes but retain three fluted pilasters to either side (Plate 39). Two recessed niches, formerly used as attendant seating, are located to the side of the double-width openings within the south wall. In addition, a wide moulded cornice runs around the rear tiered seating ceiling (forming the upper circle), interrupted on the south side with a series of small openings for the former projection chamber beyond (Plate 40).
- 5.26 The balcony ceiling is arranged over two levels, the northern end significantly richer than the southern rear. A wide shallow cornice with fluted partitions and wave edge borders the northern end. A substantial oval ceiling cove with wavy edge and deeply recessed inner oval, dominates the central section (Plate 41). The ceiling to the southern end is divided by six large downstands, with rhythmic styled Greek key lattice design to their east and west sides, presumably serving ventilation and heating purposes.

East Wing

- 5.27 The eastern wing (Figs. 20-24) extends northwards from the north-east corner and is rectangular in plan. Its appearance is much plainer than that of the principal building, reflecting its functional nature. The wing is arranged over five storeys and accessed from the north and south by two enclosed narrow staircases (Plate 42). The southern staircase has a concrete screed floor and is lit at each floor level by a single window to the east. All walls and ceilings comprise a plain painted plaster finish with areas of undressed painted brick walls.
- 5.28 The ground floor comprises a boiler house and fuel store (not accessed) (Plate 43). The first floor (Fig. 21) contains three separate dressing rooms and a small store to the east side, and a WC to the north, all accessed via a corridor to the west side (Plate 44). The rooms are accessed via a series of half glazed original timber doors with three recessed vertical panels below; each painted with a corresponding caution or dressing room number (Plate 45). All rooms to the east are lit via a Crittall-style window within the east elevation and are heated with a single cast iron radiator (Plate 46). The walls within each dressing room are curved at their join with the floor, no doubt to allow for easy cleaning: a common architectural feature within service areas of a building of this date. The second floor (Fig. 22) comprises Dressing Rooms 4 to 7, reflecting the arrangement below, with a paired female WC to the northern end. An additional door to the west side of the corridor provides access to the electrician's gallery beyond (not accessed). The far southern end houses a former chorus room (Plate 47). Above the chorus room at third floor are two further dressing rooms (Fig. 23). The eastern side contains three linked double-height service rooms, used as a plenum chamber (Plate 48 &
-

49), for air conditioning, ventilation and heating purposes, and comprised a large riveted steel ventilation unit (Plates 50 & 51), with a separate intake room to the northern end (Plate 52). The corridor and paired WC arrangement found below is mirrored on this floor. The fourth floor (Fig. 24) follows a similar layout with three dressing rooms filling the rooms to the east (either side of the plenum room below) (Plate 53).

West Wing

- 5.29 The western wing is located to the far north-west corner and extends over five storeys (Figs. 20-24). The three upper floors (the first floor comprising the access staircase only) are accessed via an enclosed narrow staircase, identical to that found to the southern end of the eastern wing and lit from the west in the same manner. The foot of the stair at ground level is accessed via a single external door to the west elevation and a single door to the former stage area. A separate external two-leaf door is situated immediately to the south of this stair and provides additional access to the first floor from this corner. All floors comprise a plain concrete screed, with plain concrete rendered walls with areas of undressed painted brick. All rooms are lit via Crittall-style windows and entered via a series of plain openings.
- 5.30 The staircase opens on its southern side at second floor level (Fig.22) into a single room, formerly utilised as the band room (Plate 54). Two windows from the south light the room and a half-glazed timber door provides external access to the air duct channel and lighting void to the east. The third floor (Fig. 23) opens to the south into a single room which is identically proportioned and accessed and lit in the same manner as the band room below. Originally this space formed the musical director's office and separate music store, served by a separate lobby to the north-east. A single door located to the eastern side provides access to the loading gallery beyond (not accessed). The staircase terminates at the fourth floor (Fig. 24) at a large landing, aligned north-south and lit from the west. A series of rooms are located to the far southern end in an east-west direction, located above the auditorium arch below. The series of rooms are accessed by a secondary flight of steps that open out into a former blowing chamber and organ chamber, with associated air duct situated to the north side (not accessed).

South Wing

- 5.31 The southern end of the building is arranged over five storeys. The first, second and third floors form public areas and have a linoleum covered concrete floor and painted plaster walls. The fourth floors are private service areas and as such have uncovered concrete screed flooring and undressed painted brick walls (exceptions noted).
- 5.32 The ground floor comprises the entrance hall, lobby, pay offices and kiosk (see Section 5.15-5.17. To the immediate south of the western stair is a small bare brick electrical intake room with concrete floor (Plate 56).
- 5.33 The first floor is accessed on its east and west sides by two double width staircases (Plate 55). Each staircase has a linoleum covered concrete floor, with painted plastered walls and a plain skirting, with a simple timber wall-mounted handrail. Both stairs open out into separate double-width corridors at first floor level, inserted to the east and west sides of the central former
-

tearoom. The former tearoom is accessed from the east and has been partitioned to form separate premises, which includes all ancillary areas to the eastern end (Fig.21). The two corridors running either side of the tearoom provide access to the balcony above and comprise carpeted floors, painted plastered walls with a plain skirting and moulded dado rail (Plate 57). The eastern stair is plainer in its appearance and continues to second floor level. The western corridor displays richer decorative details, presumably owing to it originally forming the western end of the tearoom. The corridor is lit externally from the west by three centrally placed windows (Plate 58). The area incorporates two pillars to its northern end, which presumably form part of the structural support for the balcony above. The top of each pillar is adorned in a shallow Art Deco moulding (Plate 59) and originally formed the western extent of the tearoom. Both corridors are divided at their northern ends by two-leaf timber doors with engraved glazed panels (Plate 60) and integral 'Circle' seating sign (now covered, Plate 61). To the north of each door is a secondary flight of stairs leading to the balcony at third floor.

- 5.34 The second floor (Fig. 22) comprises a series of five rooms, located to the southern side, all served by a corridor to the north. The floor is currently accessed from a continuation of the stair to the west. An identical stair arrangement is mirrored to the east side and originally provided access to the tearoom below (Plate 62). This arrangement has been reconfigured in recent years following the tearoom's conversion; as a result, these stairs now primarily provide access to the floors above. This floor comprises a male and female WC, flanked by offices to the east (Plate 63) and west (Plate 64). These toilet facilities were originally intended to serve the former tearoom below (Plate 65). Both rooms are served by a corridor to the north (Plate 66), lit by borrowed light from the south elevation via a series of glazed panels (Plate 67).
- 5.35 The third floor (Fig. 23) houses the balcony to its northern end, accessed from the east and west (see Section 5.22-5.26). To the rear of the balcony is a series of small ancillary rooms, accessed via two large openings, in addition to the continuation of the two southern stairs. A male (Plate 68) and female WC (Plates 69) are located to the western and eastern ends respectively. Each bathroom retains its original fittings, the female toilets being larger to accommodate additional cubicles (Plate 70). An additional store (Plate 71) and exhaust chamber (Plate 72) are located to the east. Between the two WCs is the former projection generator room (Plate 73).
- 5.36 The fourth floor (Fig. 24) is similar in its arrangement to the floor below, comprising a series of smaller rooms to either end, with a large central room. To the west is a small electricity, lighting and sound chamber (Plate 74). To the east of this room is a large projection room, with partitioned dimmer room. The projection room is lit by three small windows to the south and by an additional central skylight (Plate 75). The room contains two pieces of early cinema equipment, including a projector and film reel holder (Plate 76 & 77). The room has a series of small openings to its northern side, serving as former projection ports. To the east of this room is a collection of redundant rooms, originally comprising a synchronous room, exhaust and extractor fan chamber (Plate 78) to the north, and a projectionist's WC, electrician's store and repair room to the south (Plate 79). Access between all rooms on this floor originally comprised an external balcony situated to the southern side, in recent years the rooms have been knocked through to allow internal access.
-

6.0 DISCUSSION

- 6.1 The building was constructed in 1931 as a 'super cinema', forming part of the extensive Kingston cinema circuit that emerged during the interwar period. The cinema was constructed as part of a new wave of sound cinemas following the first British sound feature in 1929 (Alfred Hitchcock's 'Blackmail'), utilising new technological advancements in speaker and projection equipment.
- 6.2 It is evident that the accommodation of this new sound technology, dictated to a certain extent, the layout of the upper floors, in particular the third and fourth floors within the southern wing which included the incorporation of a new synchronising room and sound chamber.
- 6.3 The Cinematograph Act in 1909, in addition to detailed guidance published by the Home Office into the 1930s on the construction and fire compartmentation of cinemas, in particular their manual for theatre safety requirements of 1934 (cinema-theatre.org.uk), introduced a strict building code that required projection equipment to be enclosed within a fire resistant room (due to the highly flammable nature of nitrate based film). Architectural developments resulting from these measures remained favourable even after the introduction of safety film in c.1950, and have been retained in this building, principally due to the reduction in sound interference within the auditorium.
- 6.4 Additional fire safety measures have also been implemented throughout the building's history; including the use of asbestos containing wall and floor coverings and the construction of additional fire exits and stairwells. A substantial ventilation unit, consistent with contemporary technology emerging during the 1930s, supplies fresh air circulation to the building via a vast network of air ducts which are primarily located within the auditorium and southern end. A large exhaust is located to the south-east corner, regulating the temperature of the projection generator, which in addition to the use of roof vents and air shafts cooling the projection chamber itself; all helped ensure the safe working temperature of all the cinematography equipment, and thus compliance with the current legislation in place during its construction.
- 6.5 The degree of internal and external decoration varies considerably throughout the building, particularly over floors and between the ornate western and southern elevations in comparison to the east and north service sides. This deliberate use of decorative ornament clearly marks the division of public and private (service) areas. Additionally, the richly decorated west elevation stands as a bold advertising statement for the cinema, with its use of stylised traditional Greek designs (internally and externally) and modern Art Deco inspired detailing, creating an image of recognisable grandeur, both evoking the architecture of traditional entertainment venues and simultaneously presenting a modern image for this contemporary leisure activity of the period.
- 6.6 Internally the building has undergone a series of alterations as a result of its converted function as a bingo hall. These modifications include the construction of two stairways either side of the auditorium to allow for additional balcony access and the extension of the front balcony tier to accommodate a wider floor space for booth seating. The stage and orchestra
-

well have since been removed and the floor to the auditorium has been significantly lowered due to resulting construction works, resulting in the loss of all seating arrangements (the former cinema seating was replaced previously with booth seating and tables during the 1970s). In addition, the former entrance foyer has been knocked through into the auditorium and the plasterwork beneath the balcony has been removed. Despite these internal alterations, the building remains a good example of an Art Deco cinema dating to the 1930s by major cinema architect, Robert Cromie. The building's principal public areas and ancillary wings (including the former *in-situ* tearoom) combine to illustrate the former workings of the building.

- 6.7 The building was constructed during the height of the British film industry during the 1930s. The invention of the 'super cinema' came about due to the rising demand from an increasing and more diverse clientele. This increase in cinema attendance, during the 1930s, is well demonstrated by the number of film production companies that were registered during this period (640 companies between 1925 and 1936, releasing 192 films by 1936) (www.cinematreasures.org). However, the need for such large auditoria became increasingly uncommon following World War II, combined with rising film costs, many film production companies closed (leaving only 20 active by the 1940s) (www.cinematreasures.org). A subsequent increase in the numbers of cinema closures illustrates a national downturn in cinema attendance during the post war period, and the building's conversion into a bingo hall is representative of a common reuse of large cinemas from the 1960s onwards. Bingo Halls proved economically viable due to the diminished need to regularly fill the building's capacity in one sitting. The emergence of large bingo halls as an entertainment venue is also indicative of the wider evolutionary nature of the leisure and entertainment industry during the late 20th century. Evolving trends, influenced by technological advancements with the introduction of Internet bingo forums emerging towards the beginning of 21st century, led to the site's closure as a bingo hall in 2010, again illustrating a wider national movement. In conclusion, the building's conversion from a cinema (and theatre venue) into a bingo hall, during the 1970s, reflects broader developments within the leisure and entertainment industry throughout the 20th and 21st centuries.
-

7.0 REFERENCES

CgMs Consulting, July 2013. *Archaeological Desk-Based Assessment; Kingston Gala, Richmond Road, Kingston-upon-Thames.*

English Heritage. 2006a. *Understanding Historic Buildings: A Guide to Good Recording Practice.* Swindon.

English Heritage. 2006b. *Management of Research Projects in the Historic Environment.* Swindon.

ClfA. 2014. *Standard and guidance for the archaeological investigation and recording of standing buildings or structures.*

ClfA. 2014. *Standard and guidance for the creation, compilation, transfer and deposition of archaeological archives*

Indigo Planning, January 2014, *Heritage Statement; Former Gala Bingo Hall, Richmond Road, Kingston.*

Indigo Planning, August 2014, *Heritage Statement Addendum; Former Gala Bingo Hall, Richmond Road, Kingston-upon-Thames.*

Internet Sources

<http://www6.kingston.gov.uk/PropertyServices/Planning/ImageMenu?system=DC&fCaseNo=13/13017&caseNo=1313017>
Accessed: 06/05/2015

<http://list.historicengland.org.uk/resultsingle.aspx?uid=1253350>
Accessed: 06/05/2015

www.magic.gov.uk
Accessed: 07/05/2015

https://content.historicengland.org.uk/images-books/publications/dlsg-culture-entertainment/culture_and_entertainment_final.pdf/
Accessed: 07/05/2015

<http://cinematreasures.org/theaters/20490>
Accessed: 03/06/2015

<http://playingbingo.co.uk/land-bingo/history/06-history-kingston-gala.php>
Grundy, I, 'Kinston Regal Theatre'
Accessed: 03/06/2015

<http://www.kingston.gov.uk/museums>
Accessed: 03/06/2015

<http://cinema-theatre.org.uk/>
Accessed: 03/06/2015

<http://new.surreycc.gov.uk/heritage-culture-and-recreation/archives-and-history/surrey-history-centre>
Accessed: 03/06/2015

8.0 DEPOSITION OF THE ARCHIVE

A full archive intended for deposition with the LAARC has been prepared. The archive has been assigned the site code RRK 15. The full site archive will be prepared in accordance with the principals of *Management of Research Projects in the Historic Environment* (MoRPHE) (English Heritage 2006b) and the requirements of the recipient museum. The archive will comprise a hard copy of the full report, a pdf version of the report on CD, the full photographic record with registers, field notes and drawings.

9.0 ACKNOWLEDGEMENTS

Archaeology South-East would like to thank CgMs Consulting for commissioning this Historic Building Record.

PLATES



Plate 1: Exterior view of west elevation, facing north-east (7533_0001)



Plate 2: Exterior, detail of Art Deco niche and door arrangement on west elevation, facing east (7533-0003)



Plate 3: Exterior, west elevation, detail of door buttress and metal tie, facing south-east (7533-0004)



Plate 4: Exterior, west elevation, foundation stone detailing, facing east (7533-0006)



Plate 5: Exterior, west elevation, principal entrance detail, facing east (7533-0007)

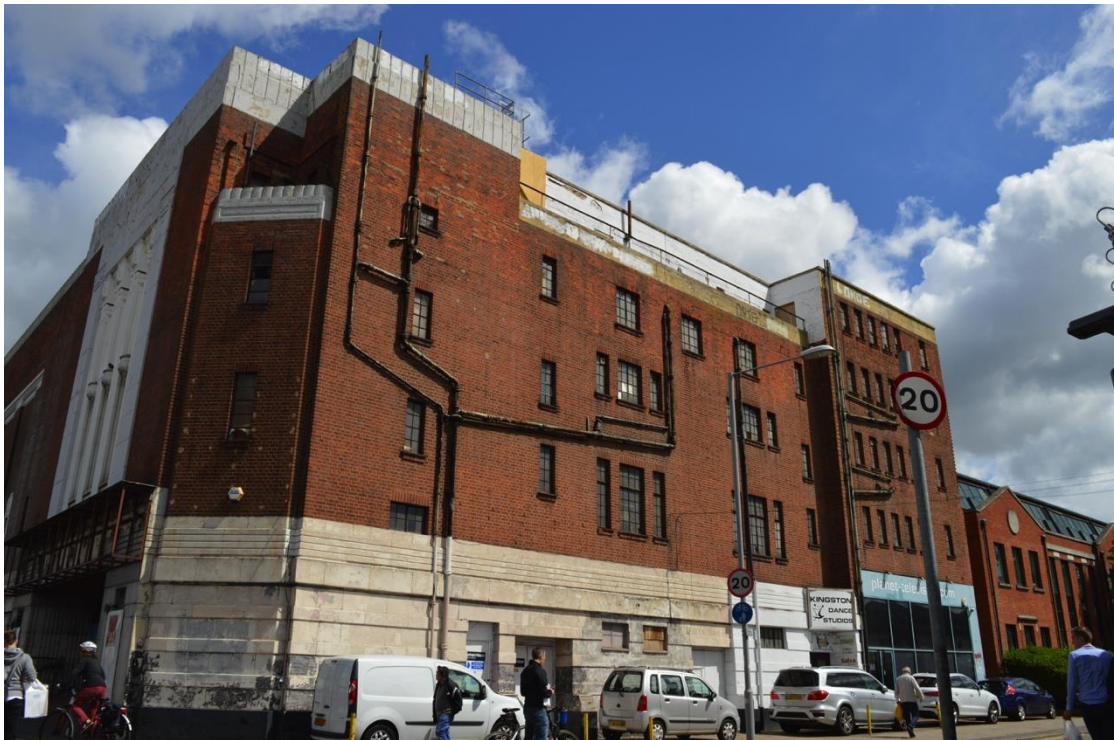


Plate 6: Exterior, general view of south elevation, facing north-east (7533-0008)



Plate 7: Exterior, detail of Crittall-style window arrangement, facing north
(7533_0009)



Plate 8: Exterior, general view of obscured north elevation, facing south-east
(7533_0013)



Plate 9: Exterior, view of central section of east elevation, facing west (7533_0011)



Plate 10: Exterior, view of northern end of east elevation (eastern wing), facing south-west (7533_0012)



Plate 11: Exterior, northern end of east elevation (eastern wing), door opening arrangement (7533_0017)



Plate 12: Ground floor, entrance lobby, principal doorway, facing west (7533_0019)



Plate 13: Ground floor, entrance lobby and location of former pay office, facing north-east (7533_0021)



Plate 14: Ground floor, entrance hall and lobby, facing west (7533_0024)



Plate 15: Ground floor, eastern end to entrance hall and stairs to balcony (former balcony pay box – now redundant), facing east (7533_0028)



Plate 16: Ground floor, entrance hall, iron supports formerly encased in fluted plaster column, facing south-west (7533_0026)



Plate 17: Ground floor, entrance hall, eastern balcony stair, facing east (7533_0030)



Plate 18: Ground floor, auditorium, detail of balcony construction, facing north-east (7533_0033)



Plate 19: Ground floor, auditorium, detail of balcony construction, facing west (7533_0035)



Plate 20: Ground floor, view of auditorium and balcony, facing south (7533_0045)



Plate 21: Ground floor, auditorium, detail of proscenium arch and former stage area, facing north (7533_0036)

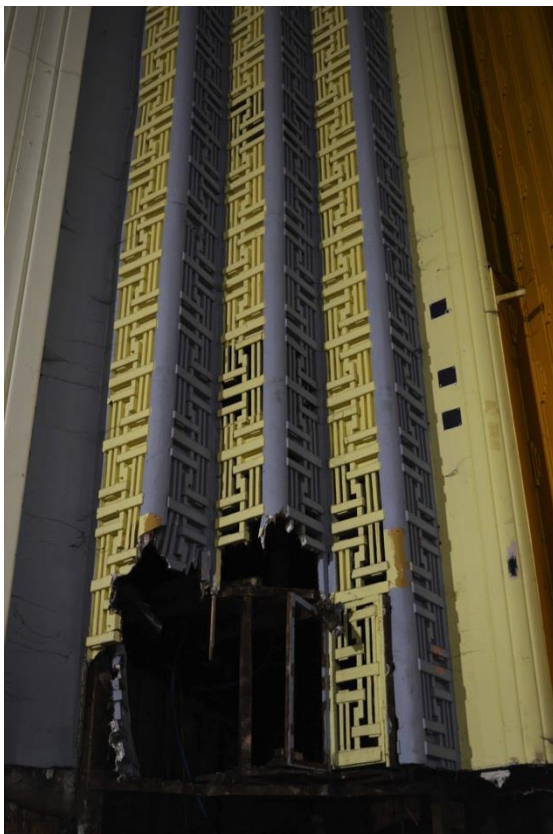


Plate 22: Ground floor, auditorium, detail of Greek key design on proscenium arch, facing north-west (7533_0040)



Plate 23: Ground floor, auditorium, proscenium arch stepped plaster detailing, facing north-east (7533_0043)



Plate 24: Ground floor, auditorium, Art Deco niche detailing, facing west (7533_0039)



Plate 25: Ground floor, auditorium, oval plaster moulded ceiling, facing north
(7533_0042)



Plate 26: Ground floor, auditorium, lion's head plaster mould detail, facing north
(7533_0063)



Plate 27: Ground floor, auditorium, western corridor with external door opening and WC, facing north (7533_0100)



Plate 28: First floor, staff room and WC, facing south-east (7533_0097)



Plate 29: Ground floor, view of western side of auditorium, facing north-west (7533_0037)



Plate 30: Ground floor, former stage area with loading gallery and counterweight scenery lines, facing west (7533_0044)



Plate 31: Ground floor, former stage roof and skylight, facing east (7533_0047)



Plate 32: First floor, eastern access stairwell, facing north-east (7533_0094)



Plate 33: First floor, western access corridor and W/C, facing north (7533_0099)

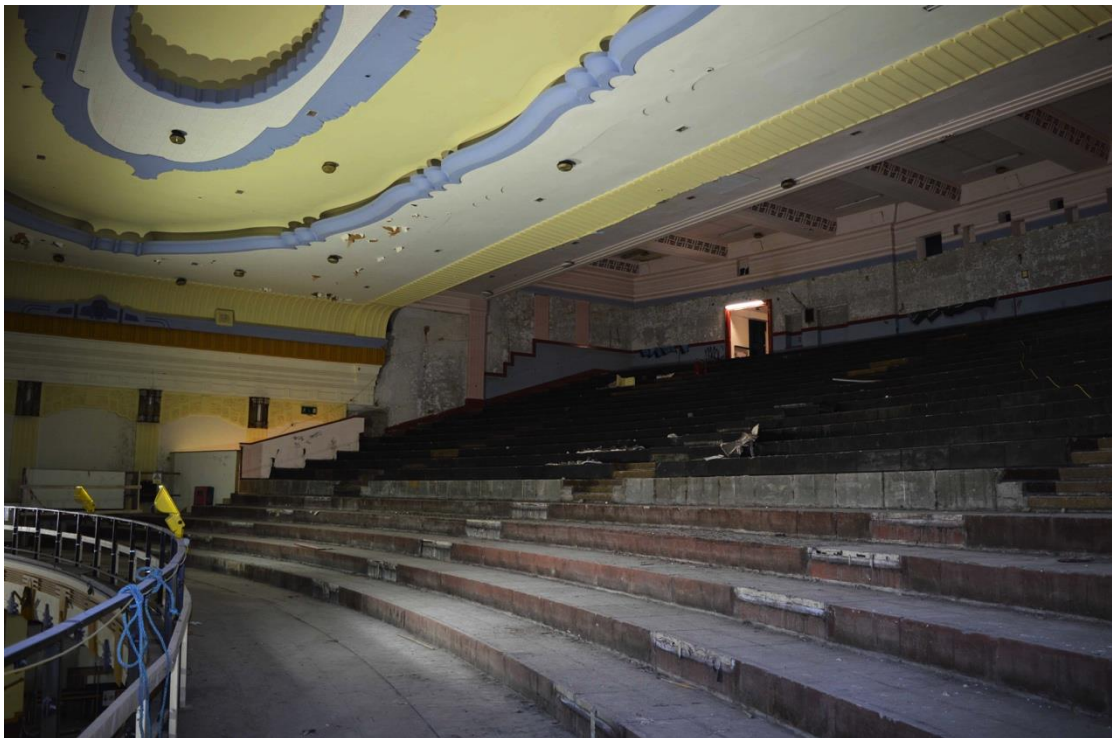


Plate 34: Third floor, view of balcony, facing south-east (7533_0059)



Plate 35: Third floor, northern face of balcony visible from the auditorium, facing south-east (7533_0048)



Plate 36: Third floor, view of balcony and arcade plasterwork to east wall, facing north-east (7533_0069)



Plate 37: Third floor, balcony, original light fitting, facing north-east (7533_0062)



Plate 38: Third floor, balcony, moulded plasterwork detailing, facing east (7533_0058)



Plate 39: Third floor, rear of balcony with Greek key design downstand patterning and attendant seat alcoves, facing west (7533_0065)



Plate 40: Third floor, balcony, projection ports within the southern wall, facing south-west (7533_0067)



Plate 41: Third floor, balcony, oval moulded plasterwork ceiling, facing east
(7533_0060)

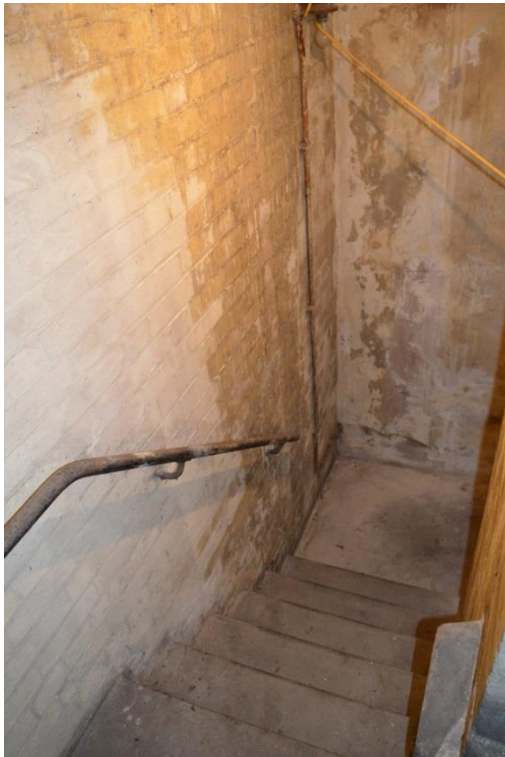


Plate 42: Second floor, east wing, view of enclosed staircase, facing west
(7533_0102)



Plate 43: Ground floor, facing east wing; note electrician's gallery, facing east (7533_0046)



Plate 44: First floor, east wing, view of access corridor, facing north (7533_0104)



Plate 45: Third floor, east wing, dressing room door detailing, facing south-east (7533_0110)



Plate 46: First floor, east wing, view of dressing room, facing south-east (7533_0114)



Plate 47: First floor, east wing, view of chorus room containing stage light casing, facing east (7533_0109)



Plate 48: First floor, east wing, plenum and intake room door detailing, facing east (7533_0103)



Plate 49: Third floor, east wing, intake room containing original projection equipment, facing north (7533_0108)



Plate 50: Third floor, east wing, plenum chamber and ventilation equipment, facing south-east (7533_0112)



Plate 51: Third floor, east wing, detail of plenum chamber ventilation equipment, facing south-east (7533_0113)



Plate 52: Third floor, east wing, detail of plenum chamber and intake room beyond, facing north-east (7533_0111)



Plate 53: Fourth floor, east wing dressing room detail, facing east, (7533_0105)



Plate 54: Second floor, west wing, former band room, facing south (7533_0101)



Plate 55: Ground floor, southern wing, western access stair, facing west (7533_0051)



Plate 56: Ground floor, southern wing, electrical intake room, facing west (7533_0052)



Plate 57: First floor, southern wing, western access corridor, facing north (7533_0053)



Plate 58: First floor, southern wing, western corridor window arrangement, facing west (7533_0092)



Plate 59: First floor, southern wing, plaster moulding to balcony support pillars, facing east (7533_0054)

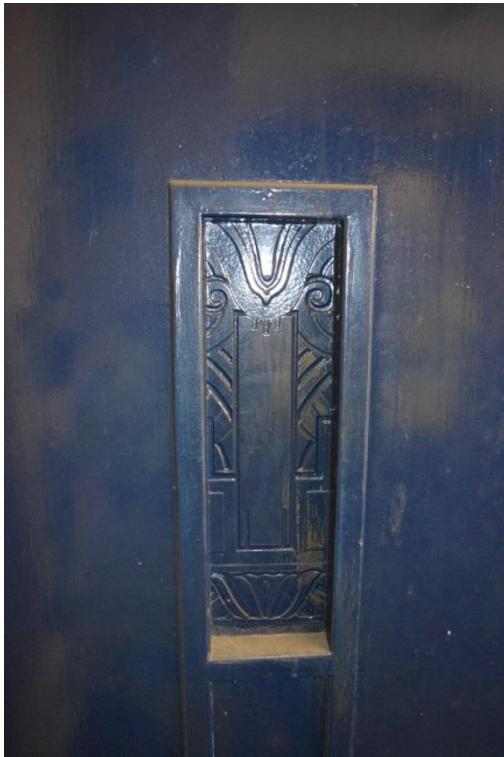


Plate 60: First floor, southern wing, detail of glazed door panel, facing south (7533_0056)



Plate 61: First floor, southern wing, eastern access corridor, glazed door detail and 'Circle' signage, facing north-east (7533_0096)



Plate 62: Second floor, southern wing, eastern access stair, facing east (7533_0091)



Plate 63: Second floor, southern wing, angled office to western end, facing south-west (7533_0086)



Plate 64: Second floor, southern wing, office to eastern end, facing south-east (7533_0090)



Plate 65: Second floor, southern wing, former male WC, facing south (7533_0089)



Plate 66: Second floor, southern wing, access corridor, facing east (7533_0087)



Plate 67: Second floor, southern wing, glazed panelling to corridor, facing south-east (7533_0088)



Plate 68: Third floor, southern wing, male WC with original fittings, facing west (7533_0084)



Plate 69: Third floor, southern wing, female WC with original fittings, facing south-west (7533_0083)

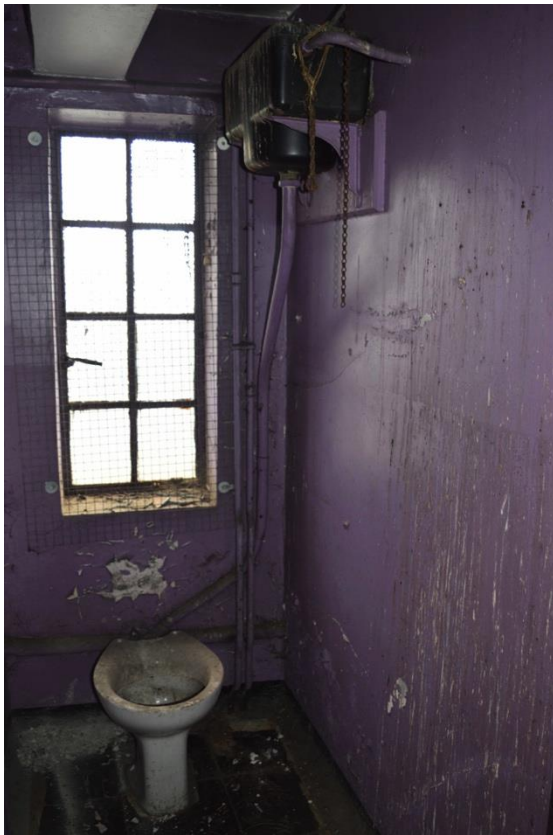


Plate 70: Third floor, southern wing, female WC, cubicle and fitting detail, facing south (7533_0082)



Plate 71: Third floor, southern wing, store room with exhaust chamber beyond, facing east (7533_0081)



Plate 72: Ground floor, external view of exhaust chamber from the auditorium, facing south-east (7533_0034)



Plate 73: Third floor, southern wing, projector generator room, facing north-west (7533_0080)



Plate 74: Fourth floor, southern wing, electrical/lighting and sound chamber, facing west (7533_0070)



Plate 75: Fourth floor, southern wing, projection chamber, facing east (7533_0077)



Plate 76: Fourth floor, southern wing, projection chamber, detail of original projection equipment, facing south-west (7533_0075)



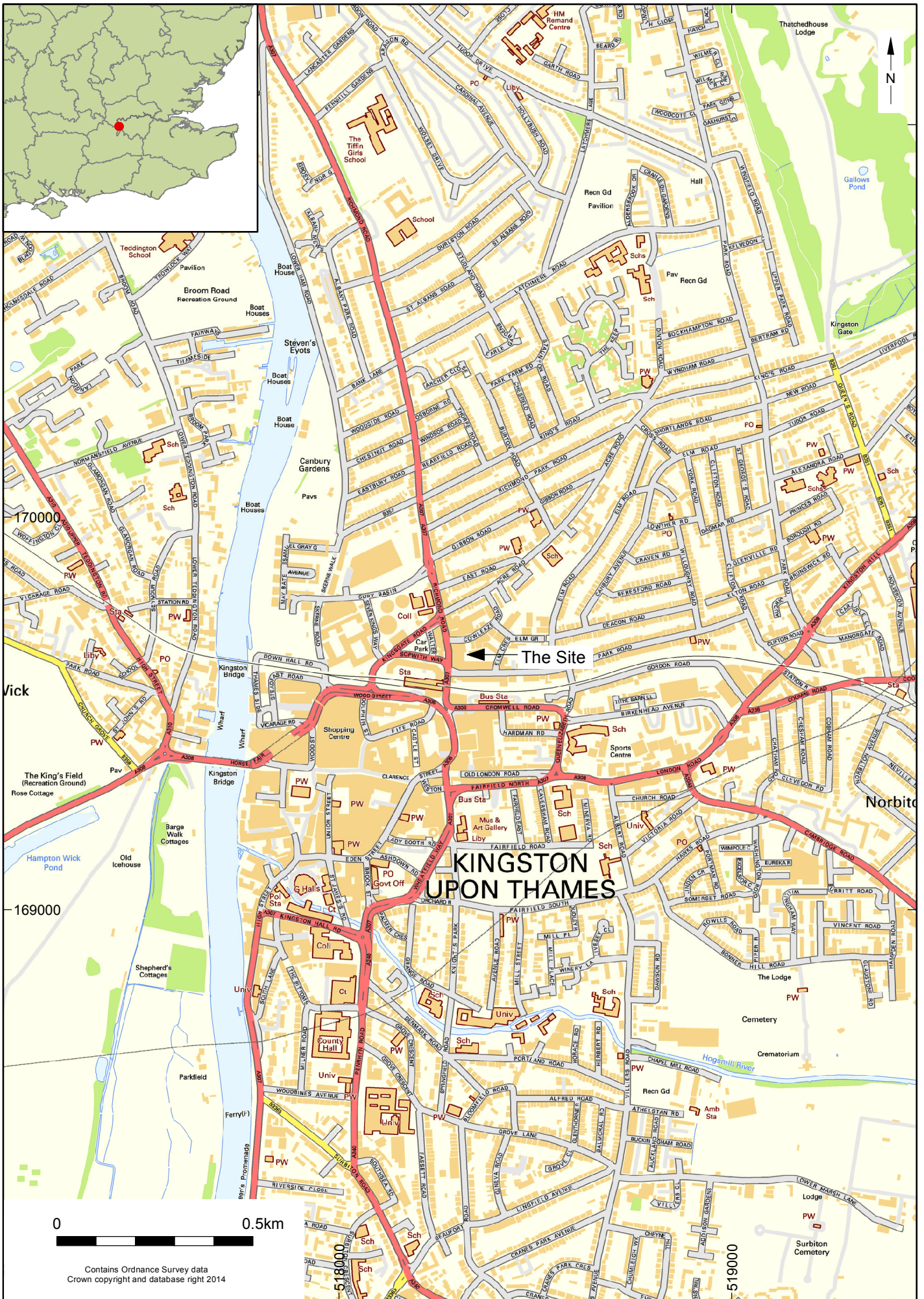
Plate 77: Fourth floor, southern wing, projection chamber, detail of original projection equipment, facing north-west (7533_0076)



Plate 78: Fourth floor, southern wing, extract fan chamber, facing south-east (7533_0072)

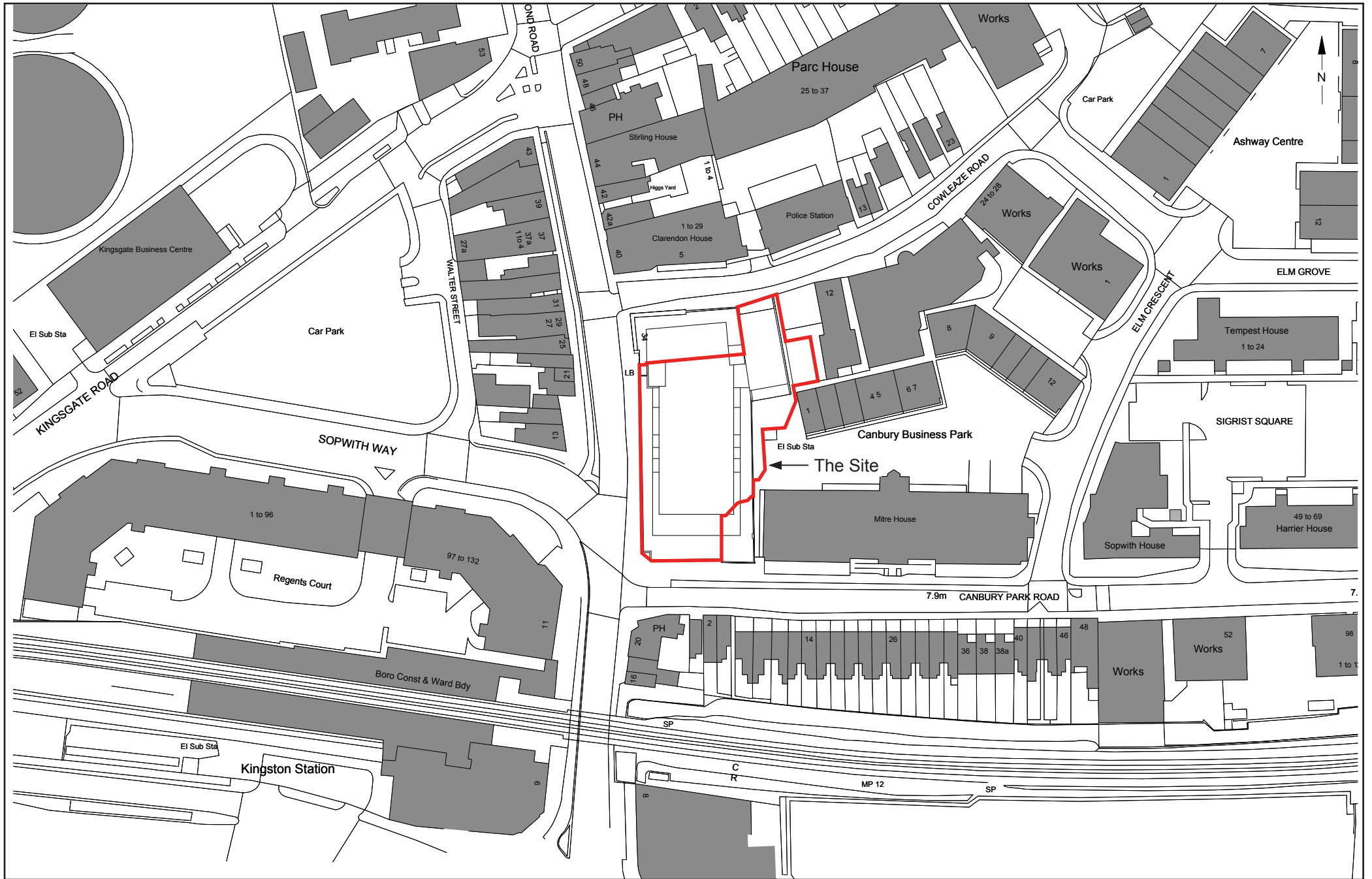


Plate 79: Fourth floor, southern wing, repair room and electrician's store beyond, facing south-east (7533_0073)

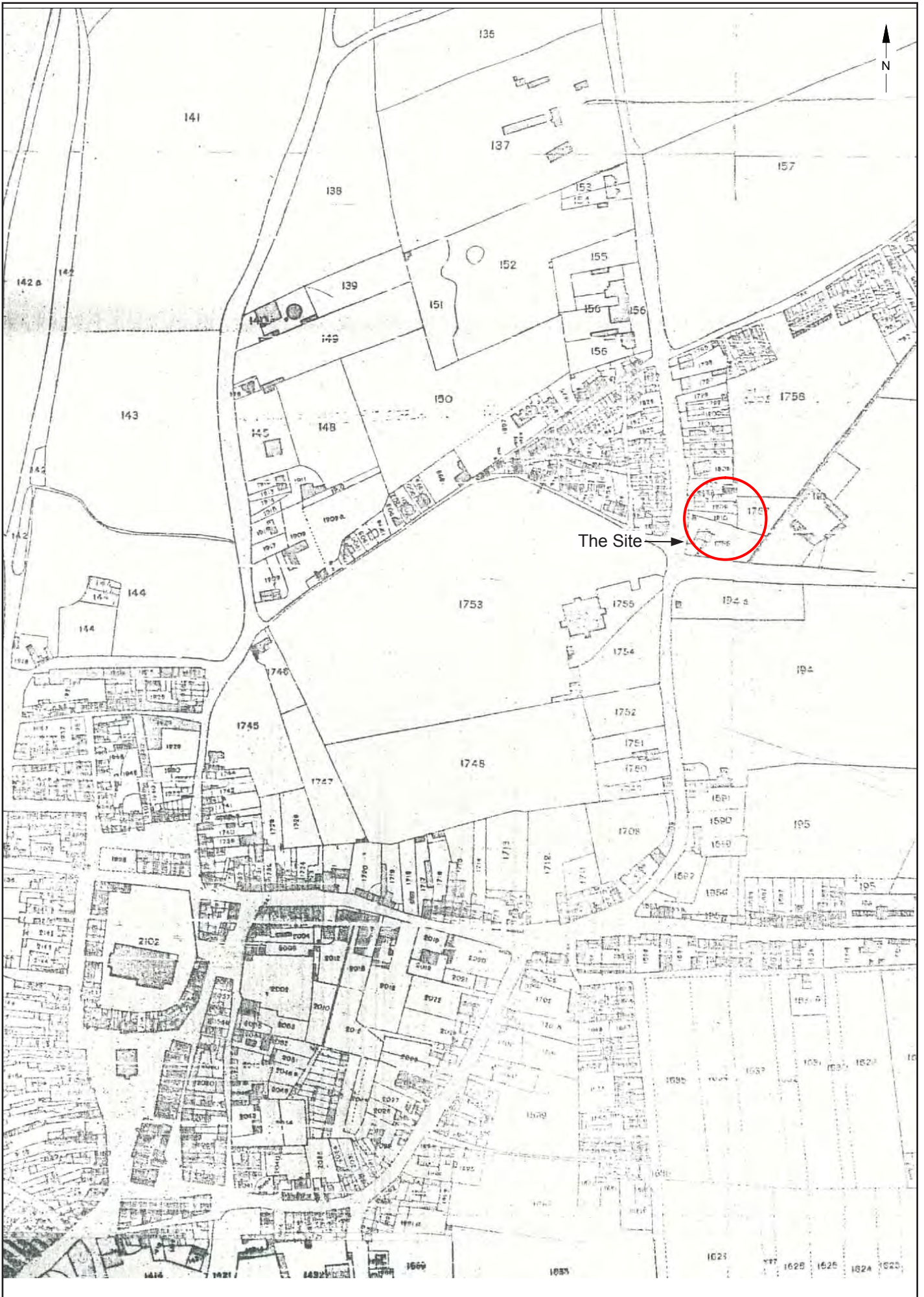


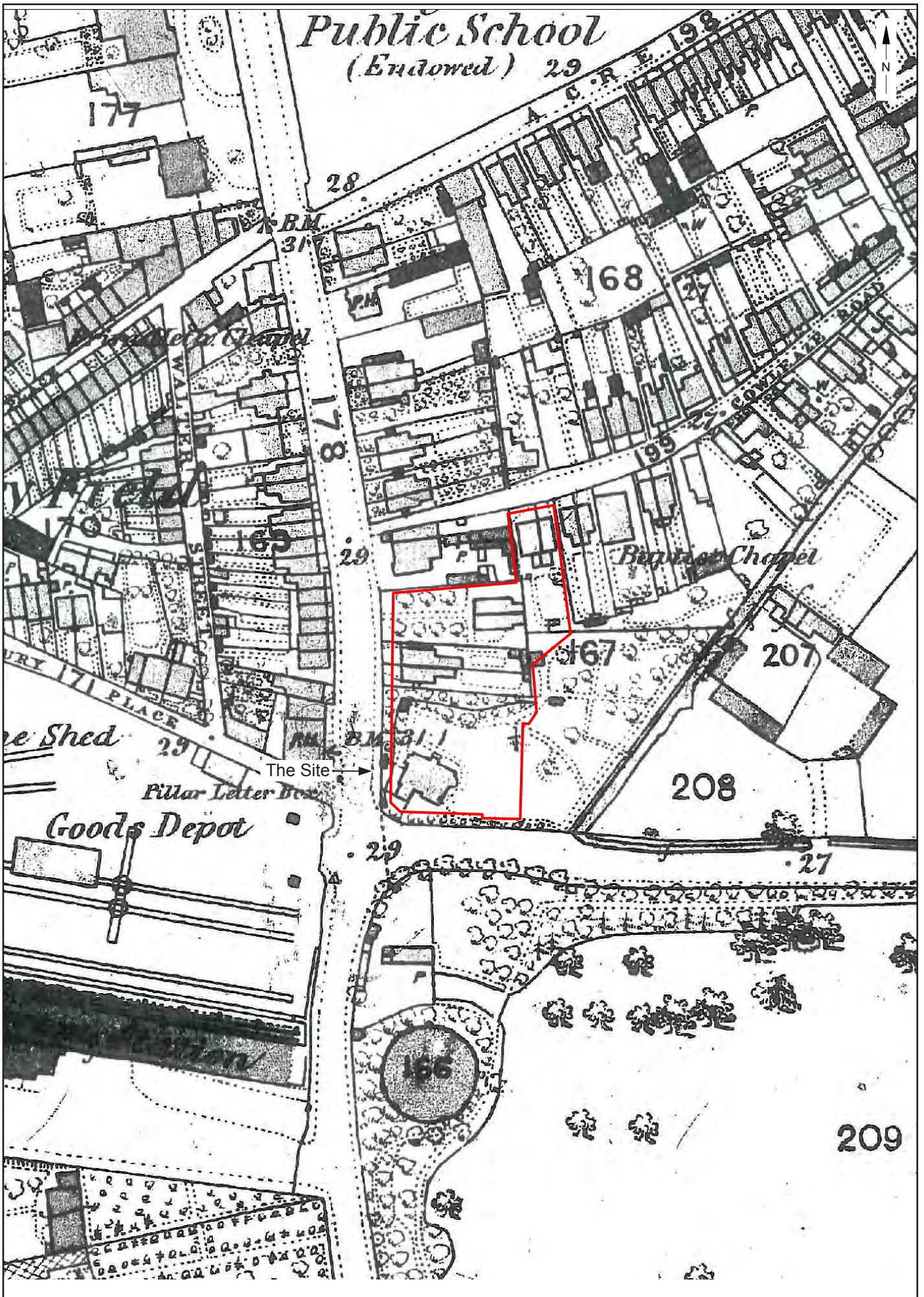
Contains Ordnance Survey data
Crown copyright and database right 2014

© Archaeology South-East		Former Gala Bingo Hall, Richmond Road, Kingston-upon-Thames, Surrey		Fig. 1
Project Ref: 7533	June 2015	Site location		
Report Ref: 2015195	Drawn by: HG			

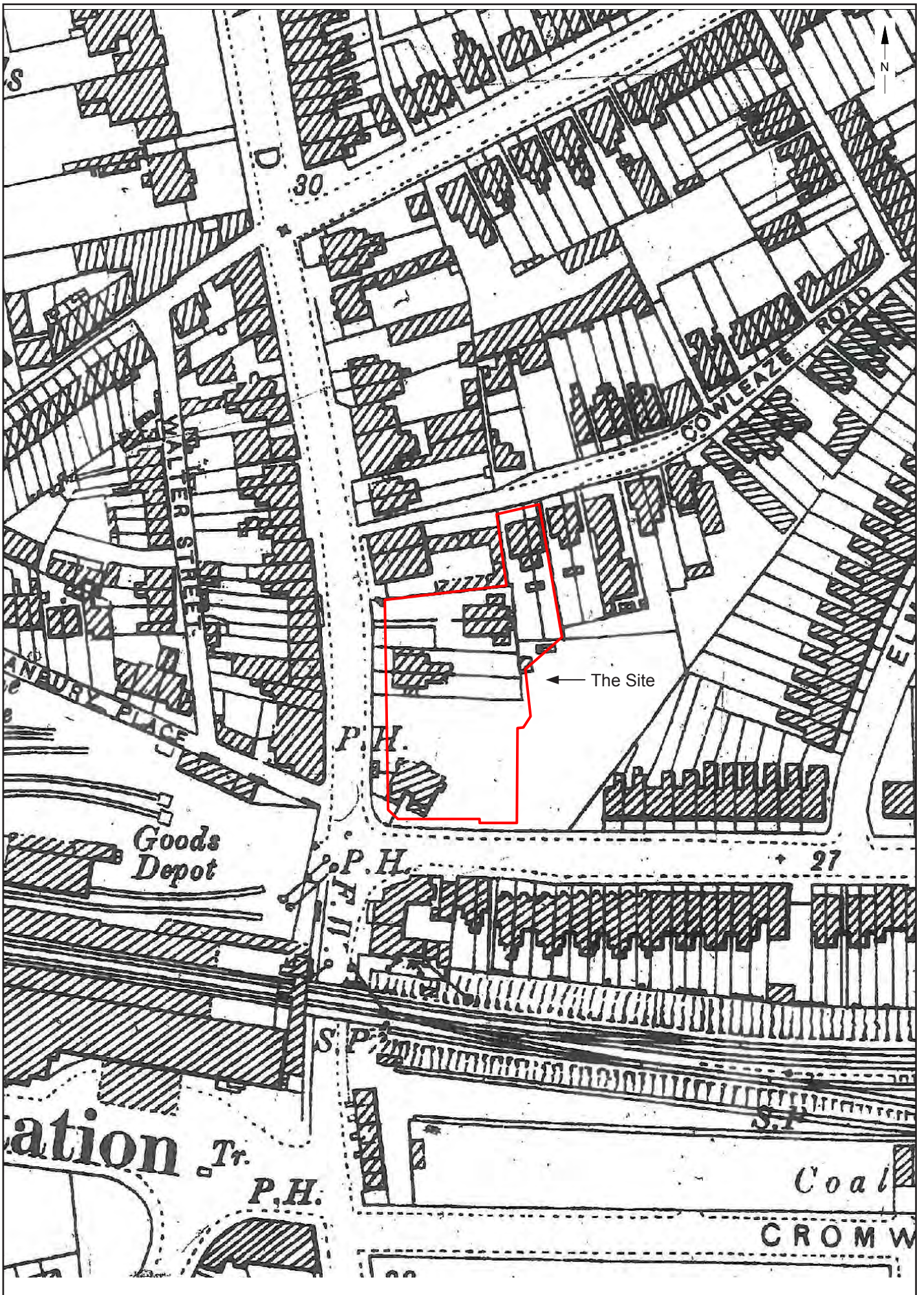


© Archaeology South-East		Former Gala Bingo Hall, Richmond Road, Kingston-upon-Thames, Surrey	Fig. 2
Project Ref: 7533	June 2015	Site Plan (Provided by Client)	
Report Ref: 2015195	Drawn by: HG		

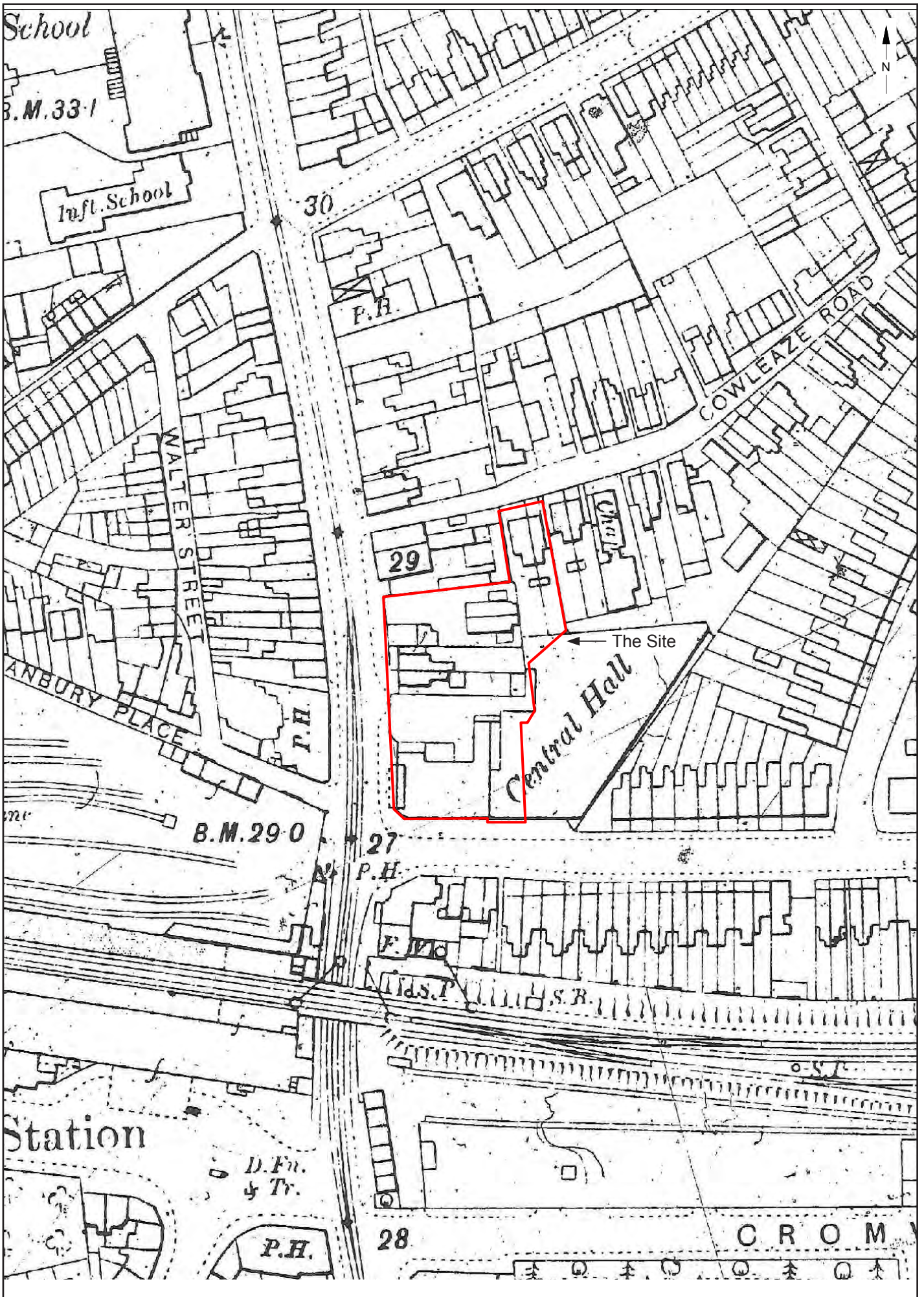




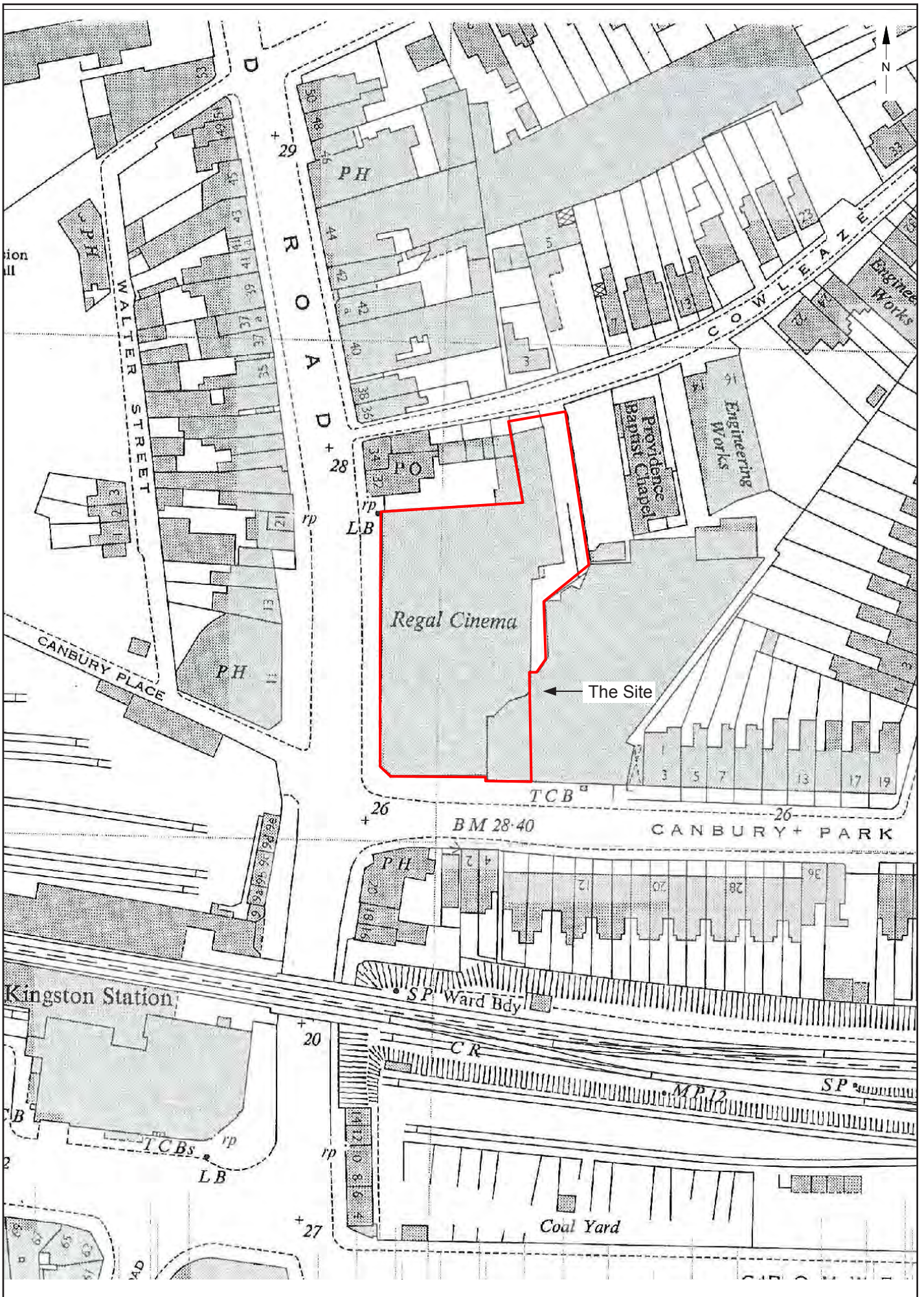
© Archaeology South-East		Former Gala Bingo Hall, Richmond Road, Kingston-upon-Thames, Surrey	
Project Ref: 7533	June 2015	Extract from 1865 Ordnance Survey Map	
Report Ref: 2015195	Drawn by: HG		



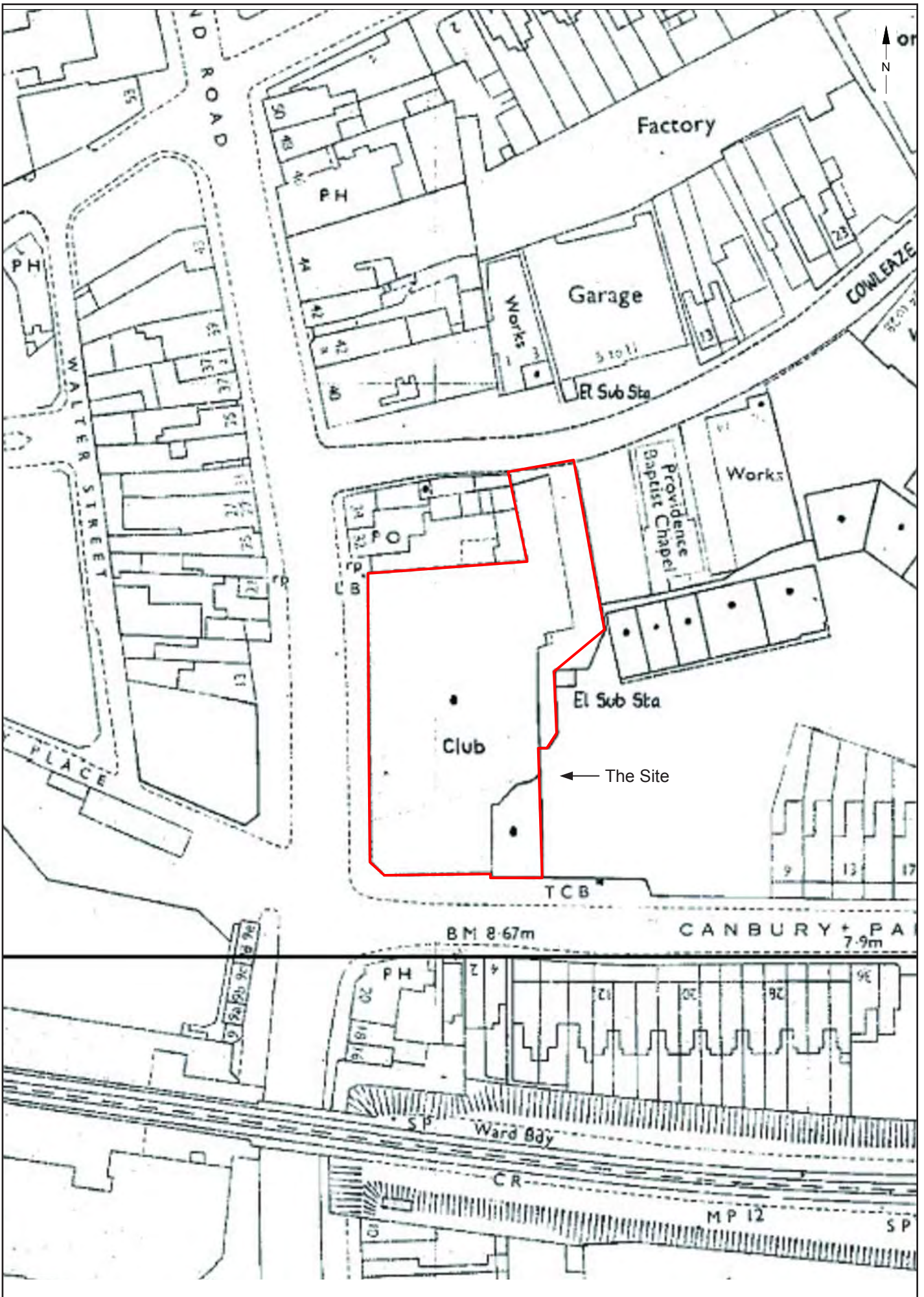
© Archaeology South-East		Former Gala Bingo Hall, Richmond Road, Kingston-upon-Thames, Surrey	Fig. 5
Project Ref: 7533	June 2015	Extract from 1895 Ordnance Survey Map	
Report Ref: 2015195	Drawn by: HG		



© Archaeology South-East		Former Gala Bingo Hall, Richmond Road, Kingston-upon-Thames, Surrey	Fig. 6
Project Ref: 7533	June 2015	Extract from 1911 Ordnance Survey Map	
Report Ref: 2015195	Drawn by: HG		



© Archaeology South-East		Former Gala Bingo Hall, Richmond Road, Kingston-upon-Thames, Surrey		Fig. 7
Project Ref: 7533	June 2015	Extract from 1956 Ordnance Survey Map		
Report Ref: 2015195	Drawn by: HG			



© Archaeology South-East		Former Gala Bingo Hall, Richmond Road, Kingston-upon-Thames, Surrey		Fig. 8
Project Ref: 7533	June 2015	Extract from 1986 Ordnance Survey Map		
Report Ref: 2015195	Drawn by: HG			



© **Archaeology South-East**

Former Gala Bingo Hall, Richmond Road, Kingston-upon-Thames, Surrey

Project Ref: 7533

June 2015

Photograph of cinema entrance with original canopy

Report Ref: 2015195

Drawn by: HG

under ABC ownership (c.1960s) (Source: www.cinematreasures.org)

Fig. 9



© Archaeology South-East		Former Gala Bingo Hall, Richmond Road, Kingston-upon-Thames, Surrey	Fig. 10
Project Ref: 7533	June 2015	Photograph of west elevation with Coral Bingo Hall signage (c.1970s) (Source: Grundy, I)	
Report Ref: 2015195	Drawn by: HG		



© Archaeology South-East		Former Gala Bingo Hall, Richmond Road, Kingston-upon-Thames, Surrey	Fig. 11
Project Ref: 7533	June 2015	Photograph of the Coral Bingo Hall interior, view from balcony (1988) (Source: Grundy, I)	
Report Ref: 2015195	Drawn by: HG		



© Archaeology South-East		Former Gala Bingo Hall, Richmond Road, Kingston-upon-Thames, Surrey	Fig. 12
Project Ref: 7533	June 2015	Photograph of the balcony seating and table alterations made under Coral ownership (2009) (Source: Grundy, I)	
Report Ref: 2015195	Drawn by: HG		



© **Archaeology South-East**

Project Ref: 7533

June 2015

Report Ref: 2015195

Drawn by: HG

Former Gala Bingo Hall, Richmond Road, Kingston-upon-Thames, Surrey

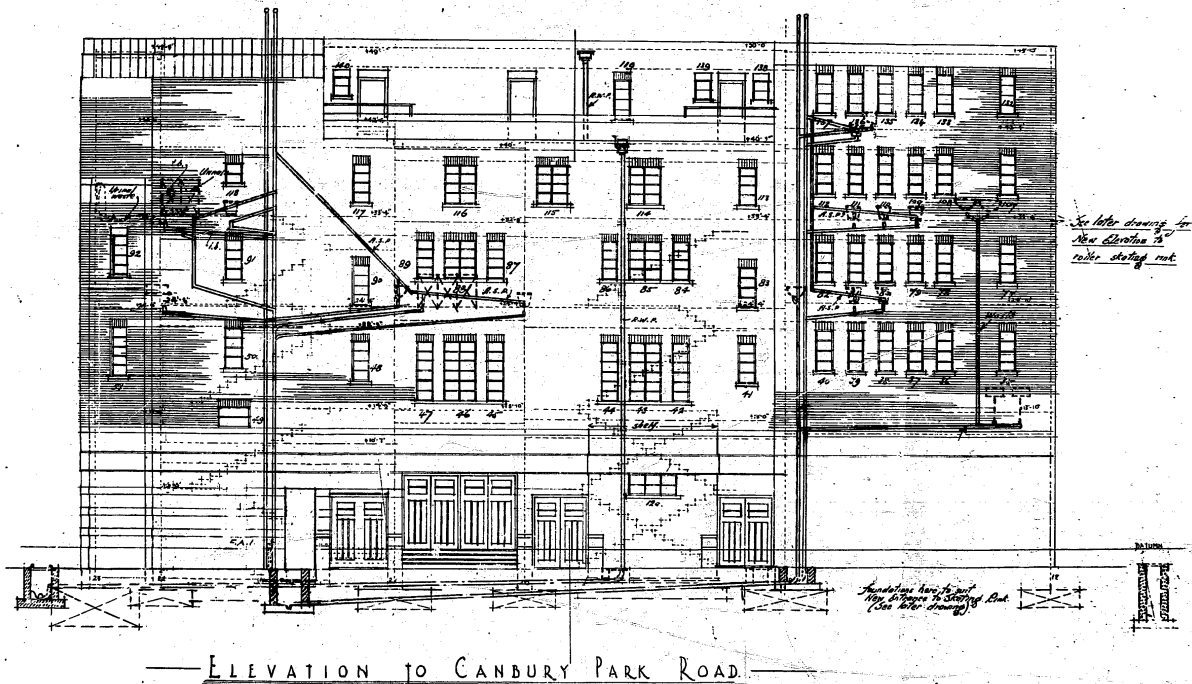
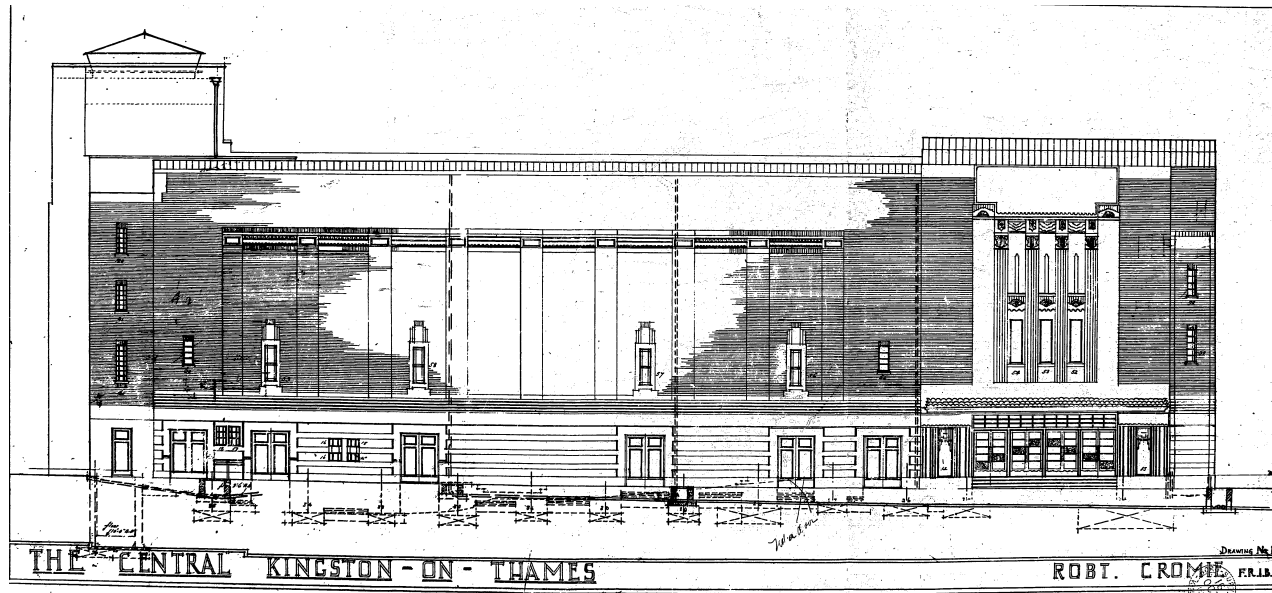
Photograph of the Gala Bingo Hall interior, view of auditorium (2009)

(Source: Grundy, I)

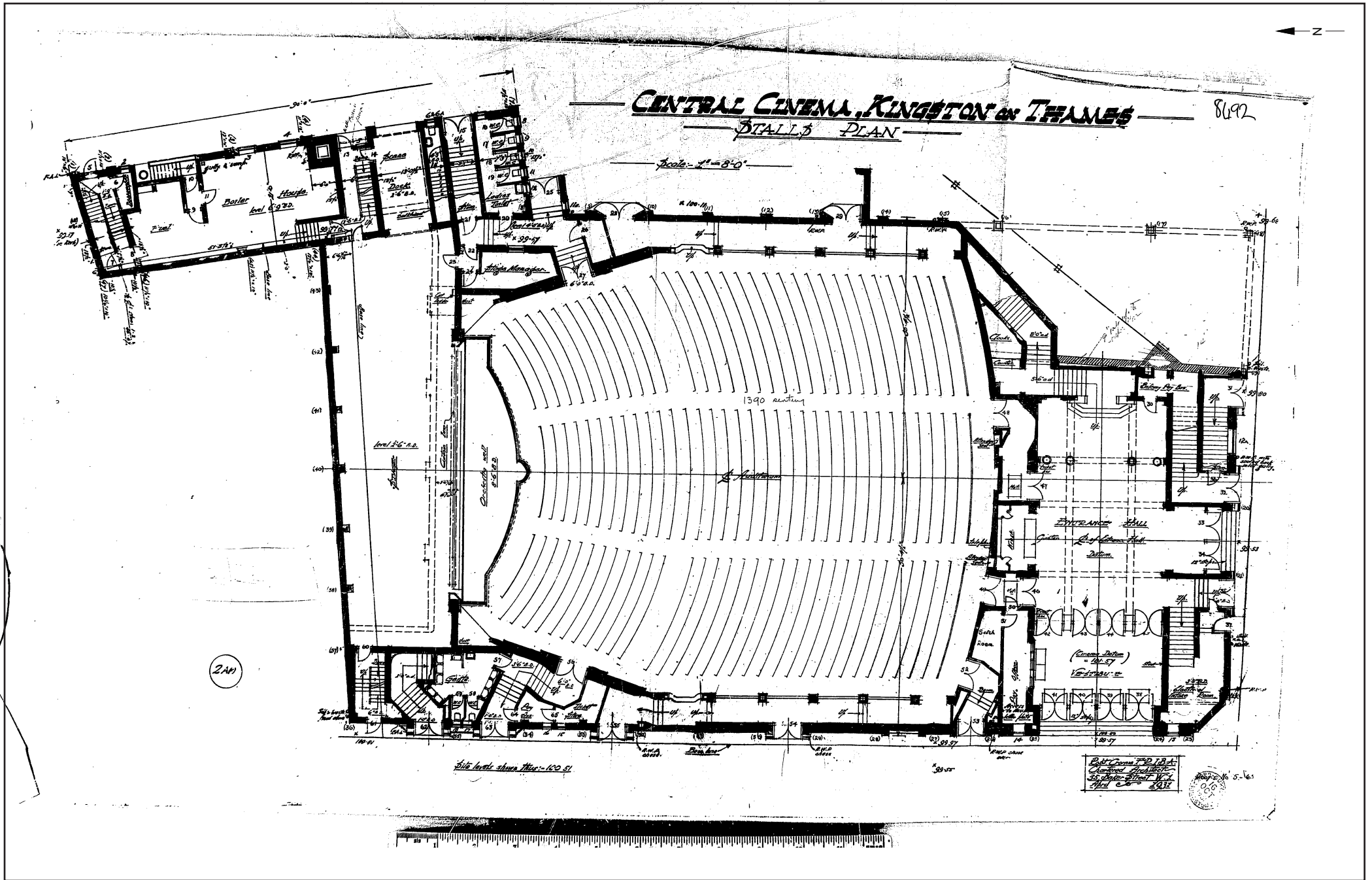
Fig. 13



© Archaeology South-East		Former Gala Bingo Hall, Richmond Road, Kingston-upon-Thames, Surrey	Fig. 14
Project Ref: 7533	June 2015	View of former tea room (Kingston Dance Studio) (Source: www.cinematreasures.org)	
Report Ref: 2015195	Drawn by: HG		



© Archaeology South-East		Former Gala Bingo Hall, Richmond Road, Kingston-upon-Thames, Surrey	Fig. 15
Project Ref: 7533	June 2015	West & South Elevations - May 1931 Architect Drawing (Provided by Client)	
Report Ref: 2015195	Drawn by: HG		



© Archaeology South-East

Former Gala Bingo Hall, Richmond Road, Kingston-upon-Thames, Surrey

Project Ref: 7533

June 2015

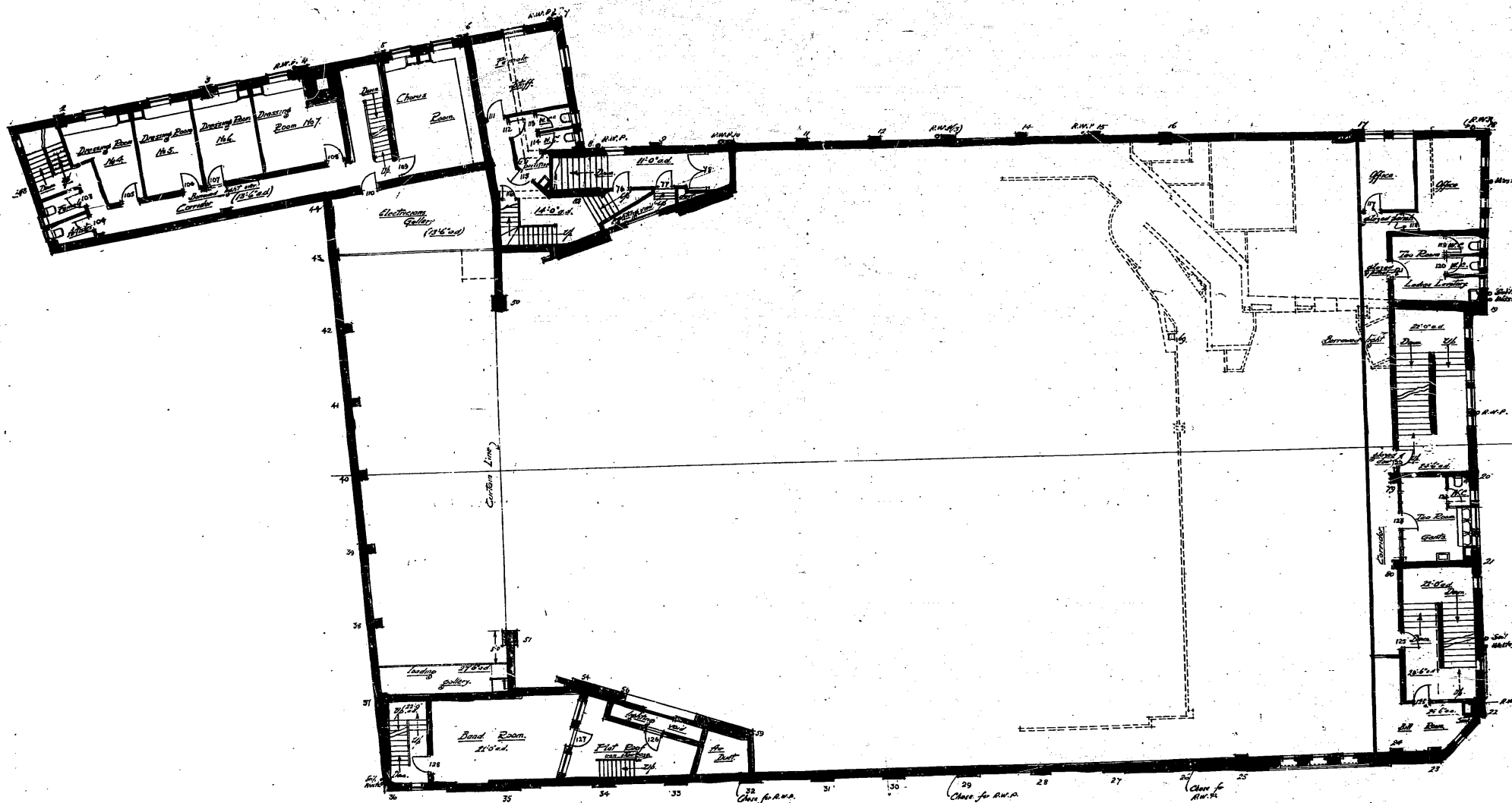
Report Ref: 2015195

Drawn by: HG

Ground Floor Plan - October 1931 Architect Drawing (Provided by Client)

Fig. 16

8692

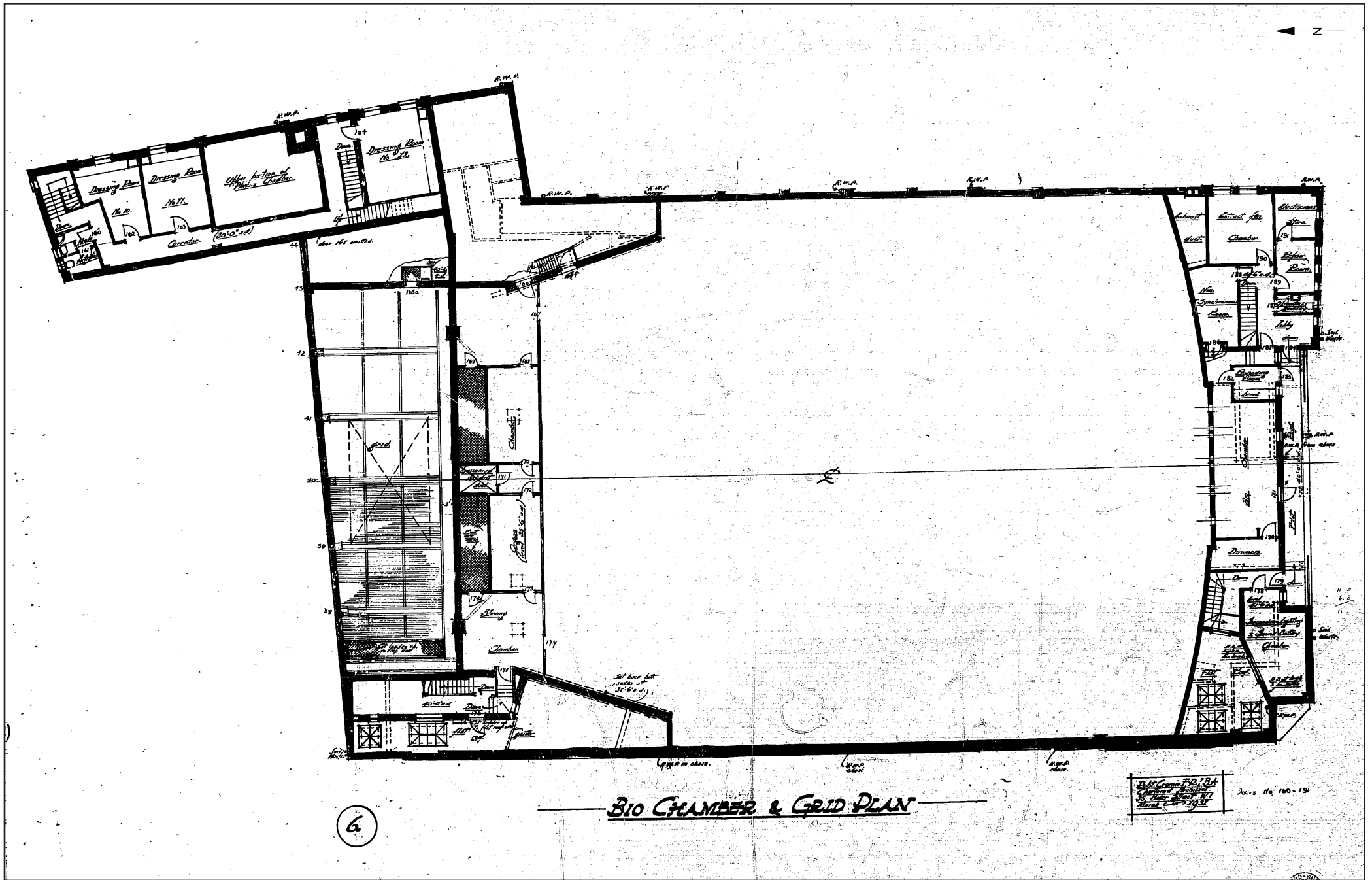


INTERMEDIATE LEVEL

R. G. COOPER F.R.I.B.A.
 Architect
 11, Abchurch Lane, E.C. 4
 London, E.C. 4
 March 1931

Drawn No 103 - 129a

© Archaeology South-East		Former Gala Bingo Hall, Richmond Road, Kingston-upon-Thames, Surrey	Fig. 17
Project Ref: 7533	June 2015	Second Floor Plan - October 1931 Architect Drawing (Provided by Client)	
Report Ref: 2015195	Drawn by: HG		



© Archaeology South-East

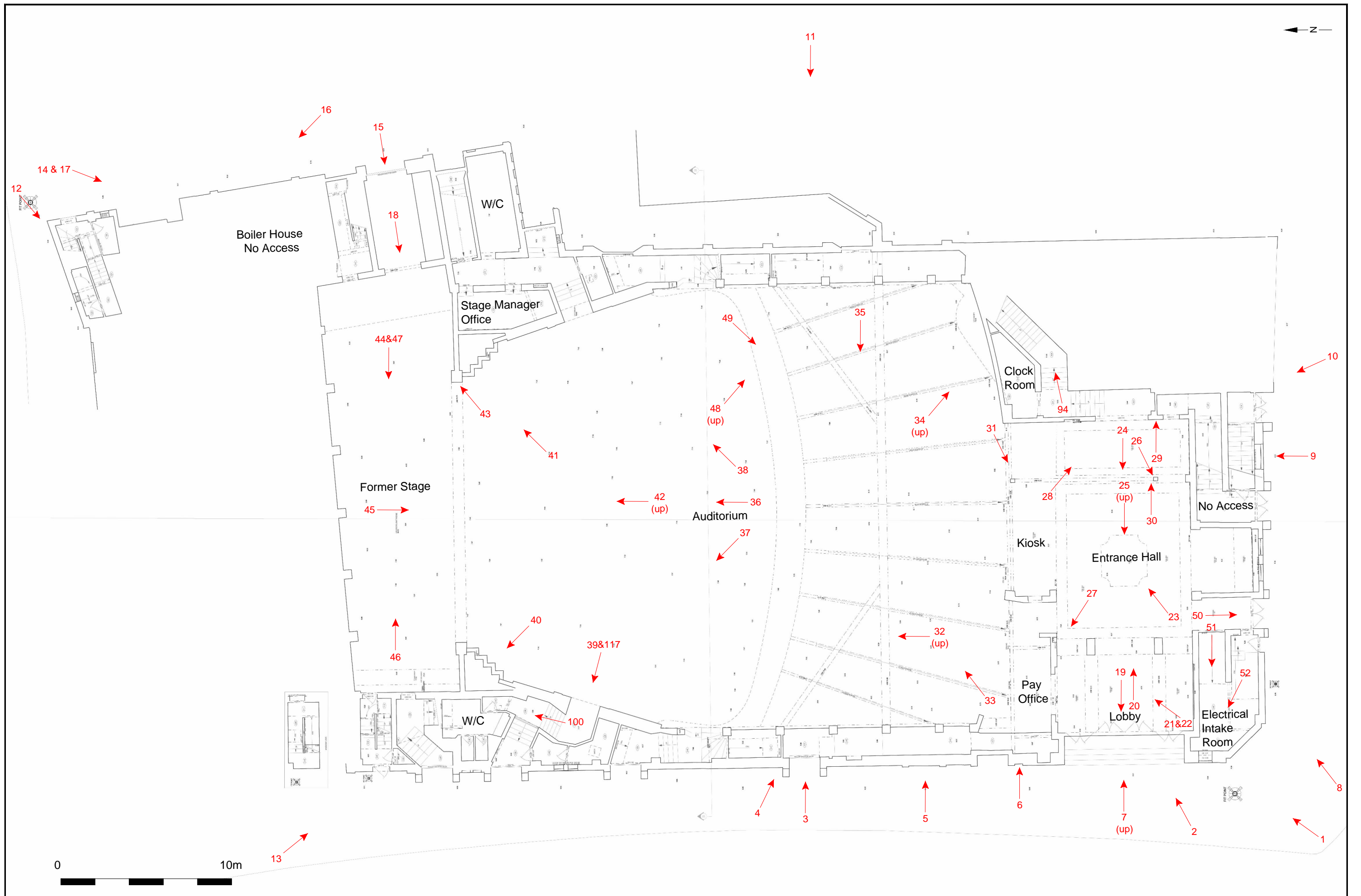
Project Ref: 7533
Report Ref: 2015195

June 2015
Drawn by: HG

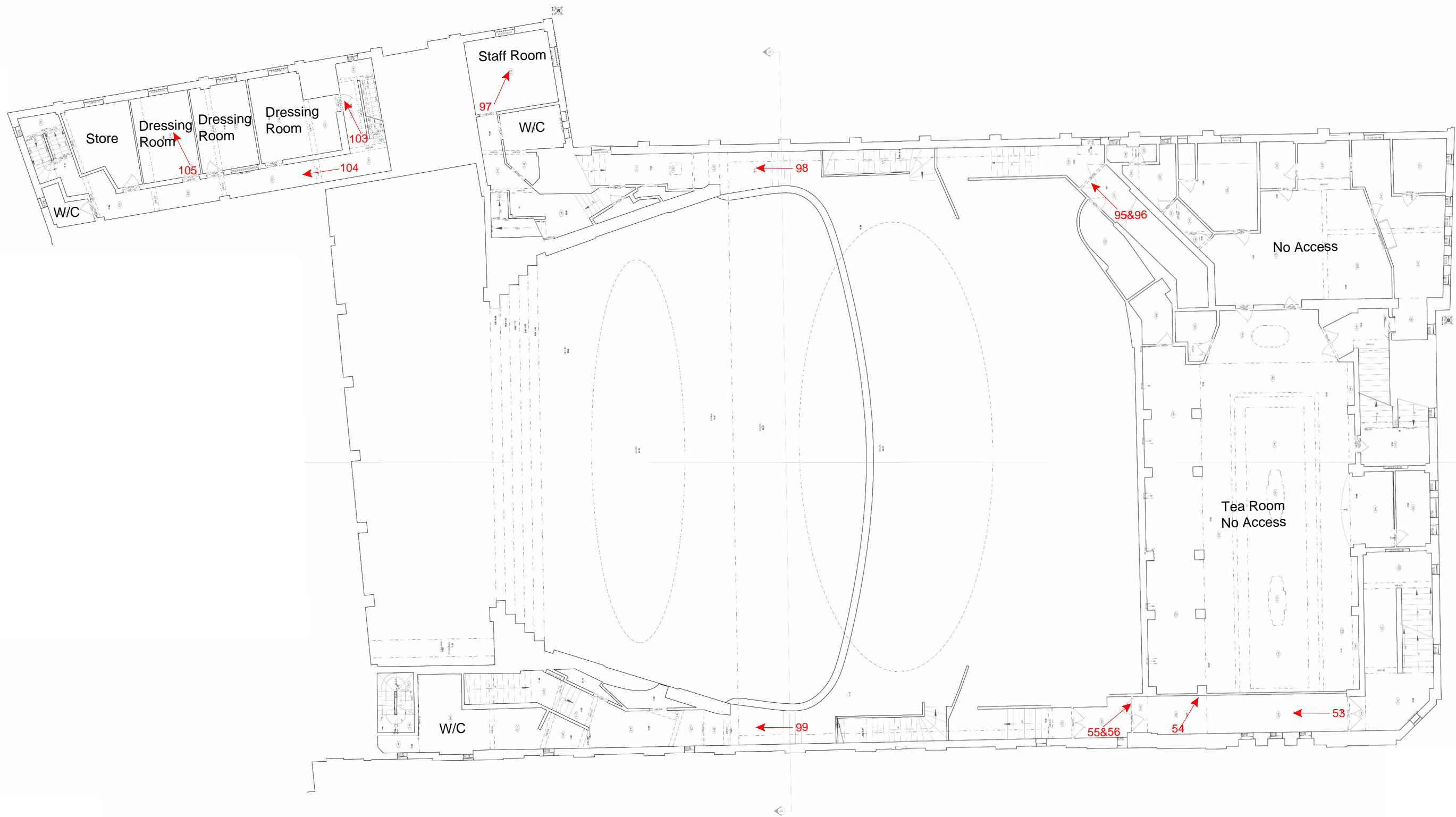
Former Gala Bingo Hall, Richmond Road, Kingston-upon-Thames, Surrey

Fourth Floor Plan - October 1931 Architect Drawing (Provided by Client)

Fig. 19



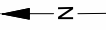
Archaeology South-East Project Ref: 7533 June 2015 Report Ref: 2015195 Drawn by: HG		Former Gala Bingo Hall, Richmond Road, Kingston-upon-Thames Existing Ground Floor Plan and Photo Locations	Fig. 20
--	--	---	---------



0 10m



0 10m



Archaeology South-East		Former Gala Bingo Hall, Richmond Road, Kingston-upon-Thames		Fig. 23
Project Ref: 7533	June 2015	Existing Third Floor Plan and Photo Locations		
Report Ref: 2015195	Drawn by: HG			



Appendix 1 Listed Building Description

Summary

Name: BINGO HALL AND KINGSTON DANCE STUDIO

List entry Number: 1253350

Location: BINGO HALL AND KINGSTON DANCE STUDIO, 22-30, RICHMOND ROAD

County	District	District Type
Greater London Authority	Kingston upon Thames	London Borough

Grade: II

Date first listed: 13-Apr-1993

Date of most recent amendment: 17-Jun-2004

Legacy System: LBS

UID: 203217

List entry Description

KINGSTON UPON THAMES

59/3/10003 RICHMOND ROAD 13-APR-93 22-30 Bingo Hall and Kingston Dance Studio, (Formerly listed as: RICHMOND ROAD Regal Cinema) II Former cinema, now bingo club and dance studios. 1930 to the designs of Robert Cromie as the Regal Cinema. Brown brick over rendered and banded plinth, with areas of plaster and faience decoration concentrated around the entrance and cornice. Rectangular plan with double-height hall, having balcony, accessed from foyers on two levels, the upper one with tea room now serving as dance studios entered separately from side street. Boiler house with chimney at rear.

Main elevation to Richmond Road has entrance near corner, with banded and rendered ground floor forming plinth to tall largely blind facade, with nine giant pilasters under linked band, and fluted concrete cornice. Four stepped or 'fountain style' Art Deco niches within this composition. Entrance is through four original pairs of double doors reached up steps and set under four stylised Ionic pilasters with wave and floral motifs between, in faience tile surround. Canopy to entrance now covered in plastic. Foyer with tripartite ceiling, a series of Art Deco panels and four fluted columns. Auditorium has proscenium arch with very rhythmic modified Greek design, repeated under balcony. Full-height fluting and Art Deco 'fountain' style niches to ante-proscenium ventilation and organ chambers. Wavy oval inset coves to ceiling and under balcony, with arcading to upper side walls incorporating original light fittings. Balcony fronts with fasces and lion's head masks.

Dance studio on first-floor level in former tea rooms. Five bay hall with sprung floor, with full-length seating area behind separated by fluted square columns and paralleled by pilasters on the rear wall. Mirrors in Art Deco 'fountain' motif surrounds. Small stage on opposite. Deep coved ceiling and cornices, with 1950s light fittings.

Source Malcolm Webb, London's Suburban Cinemas, Amber Valley, 1987

Former dressing rooms and office areas not of special interest.

Included as an early and well-preserved example of an Art Deco cinema from the 1930s, and a good, rare example of the work of a major cinema architect, Robert Cromie. Many of Cromie's designs were for Davies or Union cinemas, and consequently do not survive.

Selected Sources

Webb, M, Greater London's Suburban Cinemas 1946-1986, (1986)

National Grid Reference: TQ 18310 69641

Appendix 2 Index of Digital Photographs



7533_0001



7533_0002



7533_0003



7533_0004



7533_0005



7533_0006



7533_0007



7533_0008



7533_0009



7533_0010



7533_0011



7533_0012



7533_0013



7533_0014



7533_0015



7533_0016



7533_0017



7533_0018



7533_0019



7533_0020



7533_0021



7533_0022



7533_0023



7533_0024

Appendix 2 Index of Digital Photographs



7533_0025



7533_0026



7533_0027



7533_0028



7533_0029



7533_0030



7533_0031



7533_0032



7533_0033



7533_0034



7533_0035



7533_0036



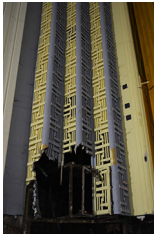
7533_0037



7533_0038



7533_0039



7533_0040



7533_0041



7533_0042



7533_0043



7533_0044



7533_0045



7533_0046



7533_0047



7533_0048

Appendix 2 Index of Digital Photographs



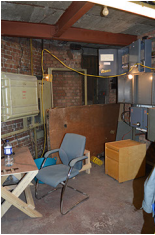
7533_0049



7533_0050



7533_0051



7533_0052



7533_0053



7533_0054



7533_0055



7533_0056



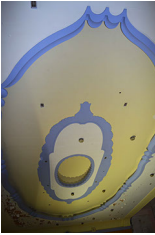
7533_0057



7533_0058



7533_0059



7533_0060



7533_0061



7533_0062



7533_0063



7533_0064



7533_0065



7533_0066



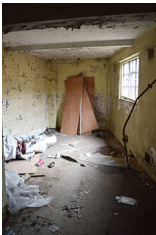
7533_0067



7533_0068



7533_0069



7533_0070



7533_0071



7533_0072

Appendix 2 Index of Digital Photographs



7533_0073



7533_0074



7533_0075



7533_0076



7533_0077



7533_0078



7533_0079



7533_0080



7533_0081



7533_0082



7533_0083



7533_0084



7533_0085



7533_0086



7533_0087



7533_0088



7533_0089



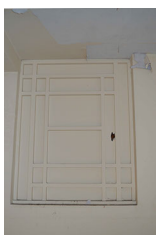
7533_0090



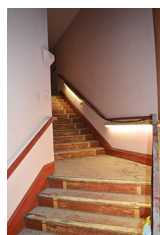
7533_0091



7533_0092



7533_0093



7533_0094



7533_0095



7533_0096

Appendix 2 Index of Digital Photographs



7533_0097



7533_0098



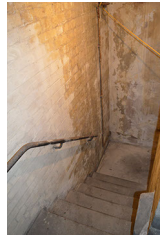
7533_0099



7533_0100



7533_0101



7533_0102



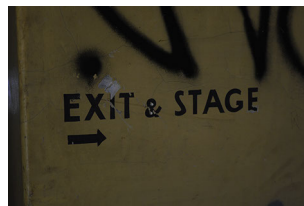
7533_0103



7533_0104



7533_0105



7533_0106



7533_0107



7533_0108



7533_0109



7533_0110



7533_0111



7533_0112



7533_0113



7533_0114



7533_0115



7533_0116



7533_0117

Appendix 3 OASIS Data Collection Form**OASIS ID: archaeol6-213394****Project details**

Project name Kingston Gala Bingo Hall, 22-30 Richmond Road, Kingston-upon-Thames, Surrey, KT2 5ED

Short description of the project In May 2015 Archaeology South-East (a division of the Centre for Applied Archaeology, University College London) carried out a programme of historic building recording in connection with the development of The Former Gala Bingo Hall, 22-30 Richmond Road, Kingston-upon-Thames, Surrey, KT2 5ED (NGR 518310 169648). The work was commissioned by CgMs Consulting to satisfy conditions attached to planning permission (Planning ref: 13/13017/FUL and 13/13018/LBC) for the redevelopment of the site. The building was constructed in 1931 as a 'super cinema' replacing an earlier, smaller, silent cinema in the same location. Towards the end of the 20th century its use as a cinema was dwindling and was subsequently converted into a bingo hall and thus altered internally from its original form. The building's original tea room is currently in use as a separate dance studio, the remaining areas of the building are currently redundant. The building was Grade II Listed in 1993 (Listed Building No.1253350) as an 'early and well-preserved example of an Art Deco cinema from the 1930s, and a good, rare example of the work of a major cinema architect, Robert Cromie'.

Project dates Start: 19-05-2015 End: 05-06-2015

Previous/future work Not known / Not known

Any associated project reference codes RRK15 - Sitecode

Any associated project reference codes 7533 - Contracting Unit No.

Type of project Building Recording

Site status Listed Building

Current Land use Other 2 - In use as a building

Monument type CINEMA Modern

Significant Finds NONE None

Project location

Country England

Site location GREATER LONDON KINGSTON UPON THAMES KINGSTON

UPON THAMES Kingston Gala Bingo Hall, 22-30 Richmond Road

Postcode	KT2 5ED
Study area	1912.00 Square metres
Site coordinates	518310 169648 518310 00 00 N 169648 00 00 E Point
Project creators	
Name of Organisation	Archaeology South-East
Project brief originator	CgMs Consulting
Project design originator	Archaeology South-East
Project director/manager	Ron Humphrey/Amy Williamson
Project supervisor	Hannah Green
Type of sponsor/funding body	CgMs Consulting
Project archives	
Physical Archive Exists?	No
Digital Archive recipient	TBC
Digital Archive ID	RRK15
Digital Media available	"Images raster / digital photography","Text"
Paper Archive recipient	TBC
Paper Archive ID	RRK15
Paper Media available	"Correspondence","Notebook - Excavation',' Research',' General Notes","Plan","Report","Section","Unpublished Text"
Project bibliography 1	
Publication type	Grey literature (unpublished document/manuscript)
Title	Former Kingston Gala Bingo Hall, 22-30 Richmond Road, Kingston-upon-Thames

Author(s)/Editor(s)	Green, H.
Other bibliographic details	7533
Date	2015
Issuer or publisher	Archaeology South-East
Place of issue or publication	Archaeology South-East
Entered by	Hannah Green (Hannah.Green@ucl.ac.uk)
Entered on	8 June 2015

Sussex Office

Units 1 & 2
2 Chapel Place
Portslade
East Sussex BN41 1DR
tel: +44(0)1273 426830
email: fau@ucl.ac.uk
web: www.archaeologyse.co.uk

Essex Office

The Old Magistrates Court
79 South Street
Braintree
Essex CM7 3QD
tel: +44(0)1376 331470
email: fau@ucl.ac.uk
web: www.archaeologyse.co.uk

London Office

Centre for Applied Archaeology
UCL Institute of Archaeology
31-34 Gordon Square
London WC1H 0PY
tel: +44(0)20 7679 4778
email: fau@ucl.ac.uk
web: www.ucl.ac.uk/caa

