

**An Archaeological Evaluation at
The former Tonbridge Working Men's Club,
Lyon's Crescent, Tonbridge,
Kent, TN9 1EX**



**By
David Fallon**

April 2008

An Archaeological Evaluation at
Tonbridge Working Men's Club,
Lyon's Crescent,
Tonbridge,
Kent
TN9 1EX

Planning Reference TM/07/01306/FL

NGR 559142 146543

Project 3261

Site Code TWC08

ASE Report no. 2008036

OASIS id: archaeol6-40403

By David Fallon

April 2008

**Archaeology South East,
Units 1 & 2,
2, Chapel Place,
Portslade,
East Sussex,
BN41 1DR**

Tel: 01273 845 497

Fax: 01273 844 187

e-mail: fau@ucl.ac.uk

website: www.archaeologyse.co.uk

Abstract

An Archaeological Evaluation was undertaken at the former Tonbridge Working Men's Club, Lyon's Crescent, Tonbridge, Kent between the 3rd and the 5th of March 2008 on behalf of A.B.Canham & Son. Three trenches totalling 31.75m were excavated to assess the archaeological potential of the site. Although the original project design specified that four trenches were to be excavated on site conditions necessitated the abandonment of one trench. This alteration in the project design was agreed with the Heritage Conservation Group at Kent County Council in advance. Although the site lay within an area of high potential for medieval remains nothing of archaeological interest was discovered in any of the three trenches.

The underlying natural, consisting of horizontally bedded mid red brown iron stone was encountered at a maximum height of 23.19m OD in the south of the site falling away to 23.01m OD in the northeast. Above the natural there was a layer of disturbed ground that consisted of mixed building and demolition rubble.

Three geotechnical test pits were also excavated under archaeological supervision. These did not reveal anything of archaeological interest but they did provide an understanding of the character of the natural on the site.

CONTENTS

- 1.0 Introduction**
- 2.0 Archaeological Background**
- 3.0 Archaeological Methodology**
- 4.0 Results**
- 5.0 Discussion**
- 6.0 Conclusion**

Bibliography

Acknowledgements

Appendix 1: Oasis Form

LIST OF FIGURES

- Figure 1:** Site Location and HER Data
- Figure 2:** Site Plan
- Figure 3:** Trench Location
- Figure 4:** Trench Sections
- Figure 5:** Trench 2 Looking South
- Figure 6:** Trench 3 Looking North
- Figure 7:** Trench Location and Proposed Development

1.0 INTRODUCTION

- 1.1** Archaeology South East (ASE), a division of the Centre for Applied Archaeology at the Institute of Archaeology, University College London, was commissioned by A.B.Canham to undertake an archaeological evaluation of land formerly the Tonbridge Working Men's Club, Lyon's Crescent, Tonbridge, Kent NGR 559142 146543, where they intend to erect a five storey building.
- 1.2** The site lay within an area of some archaeological potential given the proximity of Tonbridge Castle and other medieval remains. Therefore, the Local Planning Authority allowed the development on the condition that "a programme of archaeological work" was undertaken (planning ref. TM/07/01306/FL).
- 1.3** A specification for this fieldwork was produced by the Heritage Conservation Group, KCC. This document presents the results of the archaeological evaluation of land that was formerly Tonbridge Working Men's Club, Tonbridge, Kent.
- 1.4** The purpose of the evaluation was to locate and define any archaeological remains within the area of the proposed development and to assess their condition and significance.
- 1.5** David Fallon and John Woodall carried out the fieldwork between the 3rd and 6th of March 2008. Diccon Hart (fieldwork) and Louise Rayner (post-excavation) managed the project.

2.0 ARCHAEOLOGICAL BACKGROUND

- 2.1** The site occupies land north of the River Medway. It lies at 23.74m OD on level ground mapped by the BGS as Tunbridge Well's Sand. However, the on site geology was horizontally bedded ironstone overlying Wadhurst clay.
- 2.2** The site, located in a heavily built-up area, had to be cleared of an extant building before any work could take place. Prior to this, the most recent demolition there had been extensive development and redevelopment of the site. This has resulted in the depositing of a layer of disturbed ground comprising building and demolition rubble consisting of fragments of ironstone, concrete, modern brick and a mid brown clay silt.
- 2.3** Part of the development of the site for the Tonbridge Working Men's Club involved the removal of a cellar. This measured 8.20m by 7.30m by 2.5m and occupied the southwest corner of the site (see Fig. 3).
- 2.4** There had been no previous archaeological work undertaken at the site.

2.5 A search of the Historic Environment Records (HER) centred on the site and extending radially for 500m metres produced one hundred and eighteen records. Seventy eight of these records related to listed buildings, thirty nine (of which seven are of particular interest) to monuments (a generic group that included extant architectural features, tombs, buildings and archaeological features recorded during various types of fieldwork) and one recorded find spot. The latter two categories are summarised below and those illustrated on Fig. 1 are in italics.

No.	HER No.	Type	Date	Description	NGR
1	<i>TQ54 NE3</i>	<i>Monument</i>	<i>13th C.</i>	<i>Town Wall</i>	<i>TQ5900 4659</i>
2	<i>TQ54 NE7</i>	<i>Find Spot</i>	<i>Roman</i>	<i>Coin</i>	<i>TQ5892 4659</i>
3	<i>TQ54 NE9</i>	<i>Monument</i>	<i>14/15th C.</i>	<i>Hall</i>	<i>TQ5908 4683</i>
4	<i>TQ54 NE21</i>	<i>Monument</i>	<i>Med.</i>	<i>Borough</i>	<i>TQ5907 4662</i>
5	TQ54 NE34	Monument	PM (?)	Timber	TQ5883 4657
6	TQ54 NE36	Monument	19 th C.	Tannery	TQ5901 4633
7	TQ54 NE37	Monument	19 th C.	Hall	TQ5899 4672
8	TQ54 NE39	Monument	19 th C.	Warehouse	TQ5902 4671
9	TQ54 NE40	Monument	19 th C.	Workshops	TQ4901 4672
10	TQ54 NE45	Monument	Undated	Water Channel	TQ5932 4653
11	<i>TQ54 NE46</i>	<i>Monument</i>	<i>Med. PM</i>	<i>Pit, Gully, P.Hole</i>	<i>TQ5920 4660</i>
12	TQ54 NE49	Monument	PM	Deposit	TQ5901 4683
13	TQ54 NE50	Monument	PM	Tombs	TQ59202 46798
14	TQ54 NE51	Monument	PM	Tomb	TQ59209 46798
15	TQ54 NE52	Monument	PM	Tombs	TQ59197 46780
16	TQ54 NE53	Monument	PM	Tombs	TQ5918 4680
17	TQ54 NE54	Monument	PM	Tombs	TQ59212 46786
18	TQ54 NE55	Monument	PM	Tombs	TQ59227 46783
19	TQ54 NE56	Monument	PM	Tombs	TQ5923 4678
20	TQ54 NE57	Monument	PM	Tombs	TQ5924 4677
21	TQ54 NE58	Monument	Undated	Tomb	TQ5923 4676
22	TQ54 NE59	Monument	PM	Tomb	TQ5923 4676
23	TQ54 NE60	Monument	PM	Tomb	TQ5923 4677
24	TQ54 NE61	Monument	PM	Tomb	TQ5923 4676
25	TQ54 NE62	Monument	PM	Tomb	TQ5923 4676
26	TQ54 NE63	Monument	PM	Tomb	TQ5924 4676
27	TQ54 NE64	Monument	PM	Tomb	TQ5922 4677
28	TQ54 NE65	Monument	Modern	Garden	TQ5888 4676
29	<i>TQ54 NE66</i>	<i>Monument</i>	<i>Med.</i>	<i>Un.Id.Feat.</i>	<i>TQ5901 4683</i>
30	TQ54 NE67	Monument	PM	Tomb	TQ5920 4675
31	TQ54 NE68	Monument	PM	Tomb	TQ5920 4675
32	TQ54 NE69	Monument	PM	Tomb	TQ5920 4674
33	TQ54 NE70	Monument	PM	Tomb	TQ5918 4675
34	TQ54 NE71	Monument	PM	Tomb	TQ5920 4675
35	<i>TQ54 NE73</i>	<i>Monument</i>	<i>Med.</i>	<i>Structure</i>	<i>TQ5902 4638</i>
36	TQ54 NE74	Monument	PM	Feat.	TQ5902 4638
37	<i>TQ54 NE76</i>	<i>Monument</i>	<i>E.IIA to Med</i>	<i>Various</i>	<i>TQ59014 46722</i>
38	<i>TQ54 NE77</i>	<i>Monument</i>	<i>E.IIA to Med</i>	<i>Various</i>	<i>TQ58979 46737</i>
39	<i>TQ54 NE78</i>	<i>Monument</i>	<i>Med.</i>	<i>Structure</i>	<i>TQ59130 46545</i>
40	TQ54 NE79	Monument	PM	Wall	TQ 59036 46957

Table One: Summary of HER Data

2.6 The Palaeolithic to Bronze Age periods

2.6.1 There are no known sites or find spots from the Palaeolithic, Mesolithic, Neolithic or Bronze Age periods in the vicinity of the former Tonbridge Working Men's Club. The potential for the recovery of artefacts from these periods during the Archaeological Evaluation was considered to be low.

2.7 The Iron Age and Roman periods

2.7.1 There are five records pertaining to the Iron Age and Roman periods (see Table 1 nos 2, 37 & 38) However, the potential for the recovery of artefacts from this period during the Archaeological Evaluation was considered to be low.

2.8 The Saxon Period

2.8.1 There are no known sites or find spots from the Palaeolithic period in the vicinity of the former Tonbridge Working Men's Club. The potential for the recovery of artefacts from this period during the Archaeological Evaluation was considered to be low

2.9 The Medieval Period

2.9.1 There are nine records pertaining to this period (see Table 1 nos 1, 3, 4, 11, 29, 35, 37, 38 & 39). Located 100m from Tonbridge castle along the line of the River Medway and situated within the medieval street plan of Tonbridge the potential for the recovery of artefacts and features from this period during the Archaeological Evaluation was considered to be high.

2.10 The Post-medieval Period

2.10.1 There are more than twenty records pertaining to the post-medieval period, the majority of which refer to tombs. The potential for the recovery of artefacts and features from this period during the Archaeological Evaluation was considered to be moderate to high.

3.0 ARCHAEOLOGICAL METHODOLOGY

3.1 Three Trial Trenches were excavated mechanically. These trenches were located to assess the archaeological potential of the site and to ascertain the threat posed by the development on any archaeological remains present (see Fig. 7). The trenches varied in length between 3.70m and 5.50m and width between 2.20m and 3.00m.

3.2 Trench 1 was located in the southwest corner of the site (see Fig.3). However, on-site conditions necessitated the abandonment of Trench

1. Prior to the abandonment of this trench approval was sought and gained from Kent County Council Heritage Conservation Group.
- 3.3** The three remaining trenches were excavated under constant archaeological supervision by a 32 tonne 360° mechanical excavator using a 1.90m wide grading bucket.
- 3.4** The trenches were located with reference to a scale drawing and off-set from fixed points within the area of investigation.
- 3.5** The topsoil was reduced to the underlying natural or the archaeological horizon; whichever was the higher. Any archaeological features revealed thus were spot cleaned. Selected 1.00m wide sections from opposing walls at both ends of the trenches were also cleaned manually in order to clarify and record the trench's stratigraphy.
- 3.6** Two sondages, one in Trench 2 the other in Trench 3, were excavated to ensure that the natural deposits had been exposed. The natural deposits in Trench 4 were reduced mechanically for this purpose.
- 3.7** A site plan, including trench location, was drawn at 1:100, individual trench plans were drawn at 1:20. Trench sections were drawn at 1:10.
- 3.8** The colours of the deposits were established by visual inspection rather than by reference to a Munsell Colour Chart.
- 3.9** A photographic record, including digital, colour slide and monochrome, was kept of the trenches.
- 3.10** No deposits suitable for sampling were encountered.
- 3.11** Three 0.80m wide geo-technical test pits were excavated mechanically through the natural deposits with a toothed ditching bucket; one to the northwest, one to the northeast and one in the centre of the site (see Fig. 3). Although not a part of the archaeological works they were excavated under archaeological observation.
- 3.12** This Archaeological Evaluation was undertaken to define the presence or absence of archaeological remains within the study area, to define their character, condition, location and significance. Consequently, the results would inform any future decisions taken regarding the mitigation of the impact that the development of the former Tonbridge Working Men's Club would have upon the remains.
- 3.13** Site archive quantification can be tabulated as shown:

Number of Contexts	3
Number of Files/Paper Record	1 File
Plan and Section Sheets	3 (1 @ 1:100, 1 @ 1:20, 1 @ 1:10)
Bulk Samples	0

Photographs	55 Digital, 16 colour slide, 14 monochrome
Bulk Finds	0
Registered Finds	0
Environmental Flots/Residue	0

4.0 RESULTS

4.1 Trench 1

This trench was abandoned after consultation with the Heritage Conservation Group at Kent County Council. The abandonment of this trench was necessitated by the presence of a cellar measuring 7.30m north to south by 8.20m east to west and 2.50m deep (see Fig.3). This meant that the excavation of Trench 1 in its original position was not feasible and the spatial constraints of the site did not allow for the repositioning of Trench 1. The dimensions of Trenches 2, 3 and 4 were increased to compensate for the abandonment of Trench 1.

4.2 Trench 2

Trench 2 measured 3.90m north to south, 2.20m wide and 0.70m deep. It was located in the northwest of the site (see Figs.3, 5) running roughly parallel with the existing boundary that demarcates the western limit of this plot of land.

4.2.1 List of Recorded Contexts

Number	Type	Description	Same as	Max Len.	Max. Wid.	Max. Dep.	O/D
201	Layer	Topsoil	301/ 401	Tr.	Tr.	0.70m	23.68m
202	Layer	Natural	302/ 402	Tr.	Tr.	/	23.01m

4.2.2 Summary

The natural [201], mid reddish brown ironstone, was encountered between at 0.95m and 0.70m below current ground surface; 23.01m OD. Above the natural there was a mixed deposit comprising building/demolition rubble and mid brown clay silt. [202] (see Fig.4 Section 1).

No archaeological features were seen to cut the surface of the natural. A 2.00m long by 0.90m wide sondage was excavated in the northwest corner of the trench (see Fig.3) to verify that the natural deposits had been reached.

4.3 Trench 3

Trench 3 measured 3.70m north to south, 2.50m wide and 0.70m deep. It was located in the northeast of the site (see Figs.3, 6) running parallel with the existing boundary that demarcates the eastern limit of this plot of land.

4.3.1 List of Recorded Contexts

Number	Type	Description	Same As	Max Len.	Max. Wid.	Max. Dep.	O/D
301	Layer	Topsoil	201/ 401	Tr.	Tr.	0.70m	23.62m
302	Layer	Natural	202/ 402	Tr.	Tr.	/	23.05m

4.3.2 Summary

The natural [301], mid reddish brown ironstone, was encountered at 0.70m below current ground surface; 23.05m OD. Above the natural there was a mixed deposit comprising building/demolition rubble and mid brown clay silt. [302] (see Fig.4 Section 2)

No archaeological features were seen to cut the surface of the natural. A 3.00m long by 0.90m wide sondage was excavated in the southwest corner of the trench (see Fig.3) to verify that the natural deposits had been reached.

4.4 Trench 4

Trench 4 measured 5.50m north to south, 3.00m wide and 0.80m deep. It was located in the southeast of the site (see Fig.3) running parallel with the existing boundary that demarcates the western limit of this plot of land.

4.4.1 List of Recorded Contexts

Number	Type	Description	Same As	Max Len.	Max. Wid.	Max. Dep.	O/D
401	Layer	Topsoil	201 / 301	Tr.	Tr.	0.25m	23.57m
402	Layer	Deposit	/	Tr.	Tr.	0.25	22.94m
403	Layer	Natural	202 / 302	Tr.	Tr.	/	22.64m

4.4.2 Summary

The natural [403], mid reddish brown ironstone, was encountered at 0.80m below current ground surface; 22.64m OD. Above the natural there was a deposit of ironstone rubble mixed with white grey clay

[402]; probably a make-up layer prior to a previous development of this site. Above this there was a mixed deposit comprising building/demolition rubble and mid brown clay silt. [401] (see Fig.4 Section 3).

No archaeological features were seen to cut the surface of the natural deposits.

4.5 The Geotechnical Test Pits

Three geotechnical test pits (GTPs) measuring 3.00m long by 0.80m wide were excavated mechanically to a depth of 1.50m (GTP 3; see Fig.3) and 6.00m (GTP 1 and GTP 2; see Fig.3). Although the excavation of these test pits was undertaken for engineering, not archaeological, purposes and nothing of archaeological interest was found in them they did provide useful information about the character of the natural deposits. This information informed the excavation of the archaeological evaluation trenches.

5.0 DISCUSSION

- 5.1** Despite the location of the site in an area of high archaeological potential, no remains were found. The results of the investigation allow for conclusions to be reached regarding the archaeological potential of the site and the impact that the development will have upon any archaeological remains (see Fig.7). In this regard the works carried out at Lyon's Crescent Tonbridge can be seen to have fulfilled the aims of the investigation as stipulated in the Specification supplied by Kent County Council's Heritage Conservation Group.
- 5.2** Principally, it can be noted that there is no evidence for any archaeological remains.
- 5.3** The topsoil, subsoil and natural at a depth of between 0.70m and 0.90m were consistent throughout the site. Any cut features would have been observed easily. Thus it is very unlikely that any such features remained unobserved.
- 5.4** The natural deposits are undisturbed beneath the topsoil and therefore any archaeological remains within it will be relatively undisturbed. However, the results of this evaluation show that the potential for such remains is very low.
- 5.5** The redevelopment of this site though extensive and requiring the excavation of deep foundation trenches that will impact heavily upon the natural deposits will have no impact upon archaeological remains.

6.0 CONCLUSION

- 6.1** Situated as it was in an area of high potential for remains from the Medieval period the proposal to erect a five storey residential unit on land formerly the Tonbridge Working Men's Club, Tonbridge (see Fig.1) necessitated the undertaking of an Archaeological Evaluation of this plot of land.
- 6.2** A gradual mechanical reduction of the topsoil in three trenches until the natural deposits were reached did not reveal any archaeological remains.
- 6.3** Though limited in scale this evaluation and its results allowed definitive conclusions to be reached regarding the potential of this development to impact upon archaeological remains.
- 6.4** There are no archaeological remains present within the boundaries of this site.

Appendix 1

OASIS DATA COLLECTION FORM: England

[List of Projects](#) | [Search Projects](#) | [New project](#) | [Change your details](#) | [HER coverage](#) | [Change country](#) | [Log out](#)

Printable version

OASIS ID: archaeol6-40403

Project details

Project name The former Tonbridge Working Men's Club

Short description of the project An Archaeological Evaluation comprising 3 trenches totalling 37.75m were excavated to assess the potential of the site prior to redevelopment as a residential block. Though the site lay within an area of high potential for medieval remains previous development of the site had destroyed any archaeological remains that had been present.

Project dates Start: 03-03-2008 End: 06-03-2008

Previous/future work No / No

Any associated project reference codes TWC08 - Sitecode

Type of project Field evaluation

Site status None

Methods & techniques 'Targeted Trenches'

Development type Urban residential (e.g. flats, houses, etc.)

Prompt Planning condition

Position in the planning process After full determination (eg. As a condition)

Project location

Country England

Site location KENT TONBRIDGE AND MALLING TONBRIDGE former Tonbridge Working Men's Club

Postcode TN9 1EX

Study area 519.00 Square metres

Site coordinates TQ 559142 146543 50.9096912602 0.217987905645 50 54 34 N
000 13 04 E Point

Height OD Min: 23.01m Max: 23.19m

Project creators

Name of Organisation Archaeology South East

Project brief originator Kent County Council

Project design originator KENT COUNTY COUNCIL

Project director/manager Diccon Hart

Project supervisor David Fallon

Type of sponsor/funding body Client

Project archives

Physical Archive Exists? No

Digital Archive recipient	Local Museum
Digital Contents	'Stratigraphic'
Digital Media available	'Images raster / digital photography','Text'
Paper Archive recipient	Local Museum
Paper Contents	'none'
Paper Media available	'Context sheet','Drawing','Photograph','Plan','Report','Section'

**Project
bibliography 1**

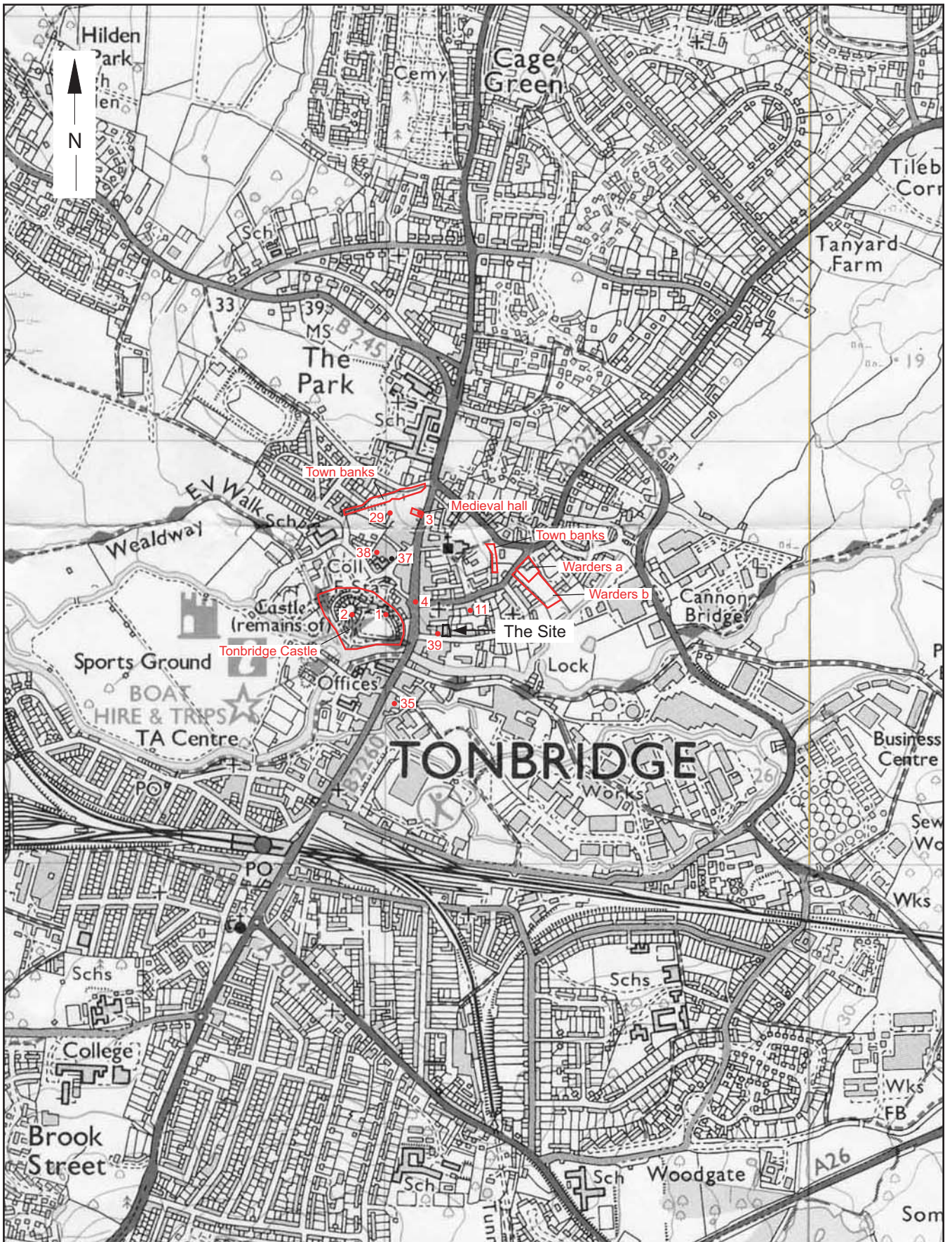
Publication type	Grey literature (unpublished document/manuscript)
Title	An Archaeological Evaluation at the former Tonbridge Working Men's Club, Lyon's Crescent, Tonbridge
Author(s)/Editor(s)	Fallon, D
Date	2008
Issuer or publisher	ASE
Place of issue or publication	Units 1 and 2 2 Chapel Place Portslade East Sussex
Description	A4 soft cover word processed

Entered by	DAvid Fallon (d.fallon@ucl.ac.uk)
Entered on	9 April 2008

48

47

46

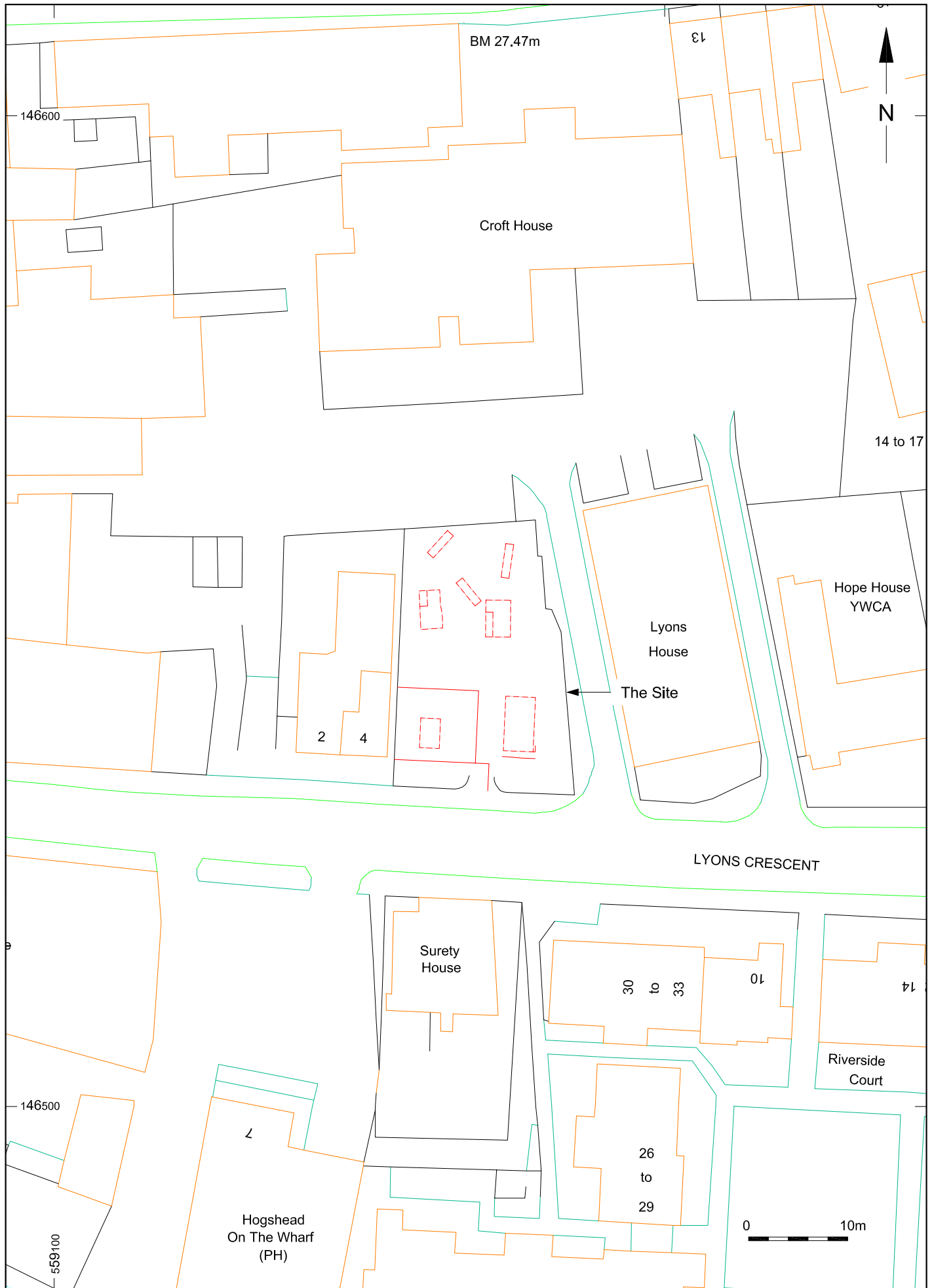


59

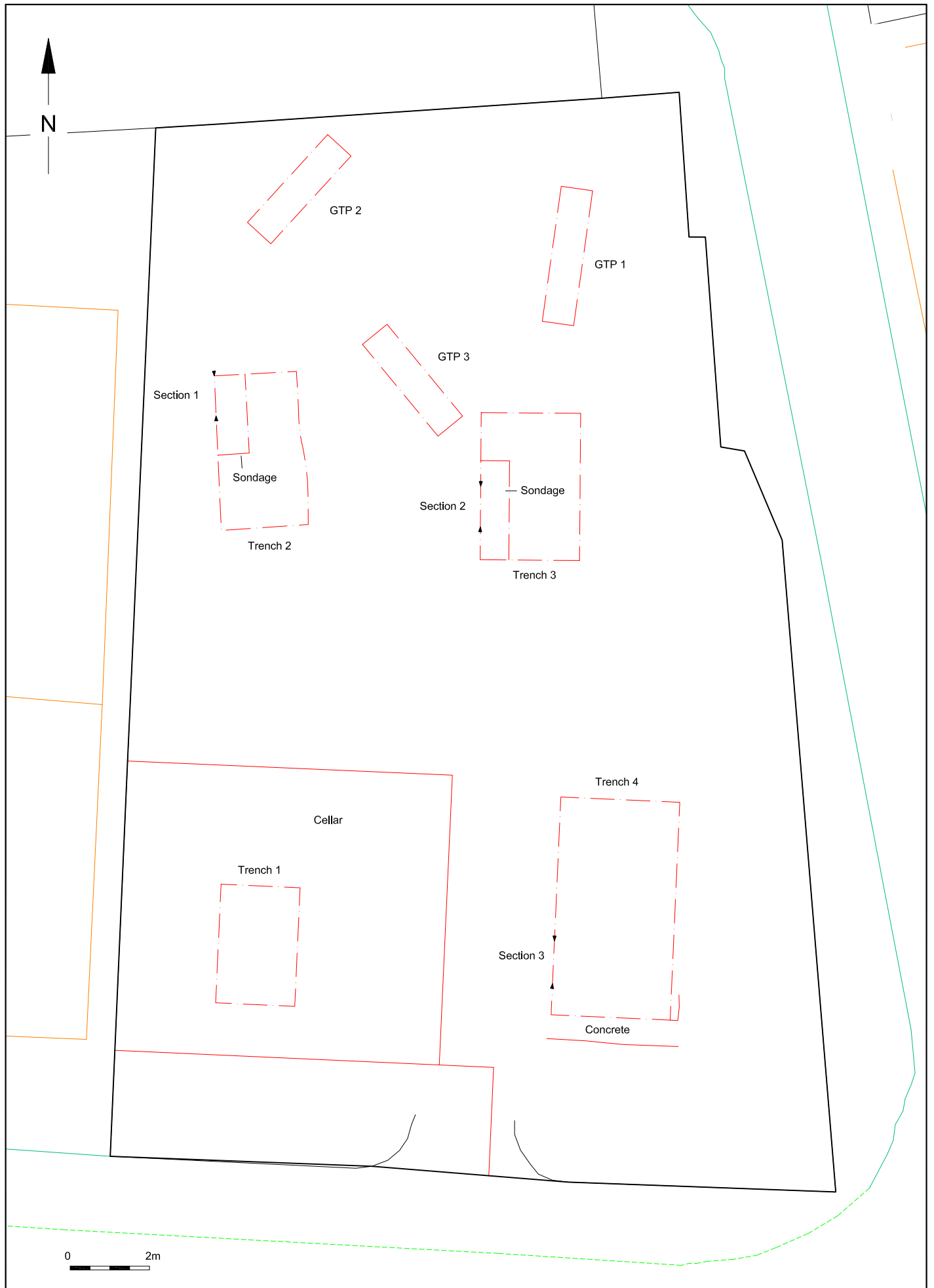
60

© Archaeology South-East		Tonbridge Working Men's Club	Fig. 1
Project Ref: 3261	April 2008	HER Data	
Report Ref: 2008036	Drawn by: JLR		

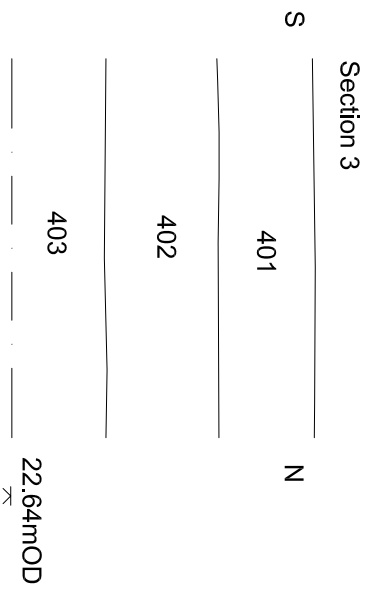
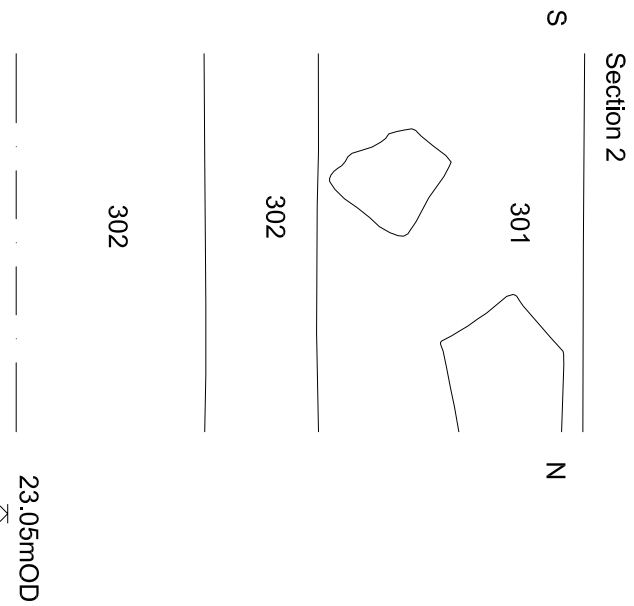
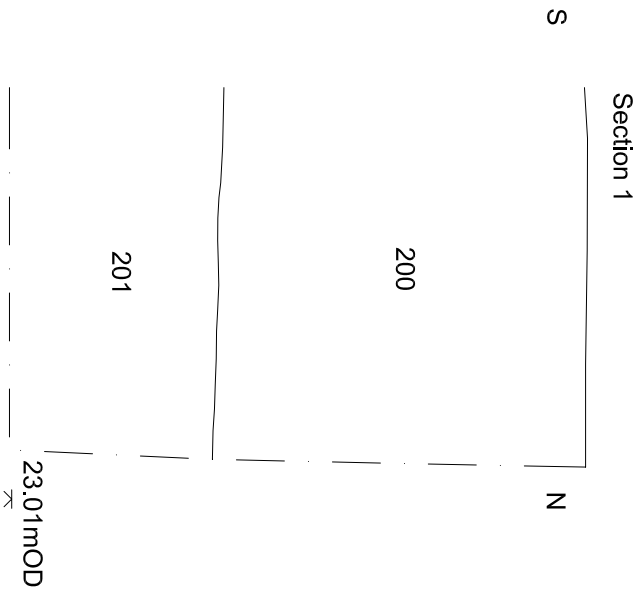
Reproduced from the Ordnance Survey's 1:25000 map of 1997 with permission of the Controller of Her Majesty's Stationary Office. Crown Copyright. Licence No. AL 503 10 A



© Archaeology South-East		Tonbridge Working Men's Club		Fig. 2
Project Ref: 3261	April 2008	Trench Location		
Report Ref: 2008036	Drawn by: JLR			



© Archaeology South-East		Tonbridge Working Men's Club		Fig. 3
Project Ref: 3261	April 2008	Trench Location		
Report Ref: 2008036	Drawn by: JLR			



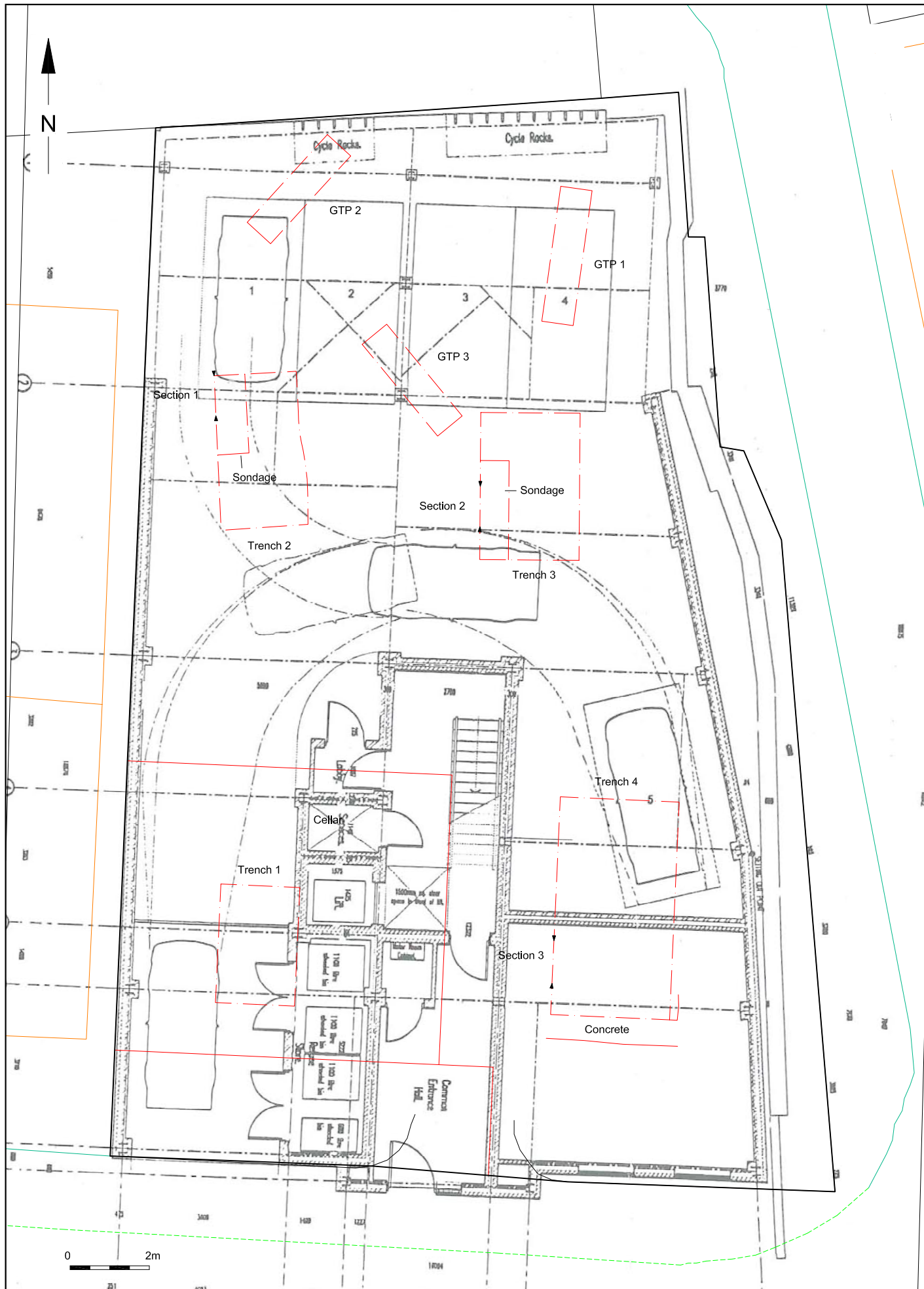
© Archaeology South-East		Tonbridge Working Men's Club	
Project Ref: 3261	April 2008		
Report Ref: 2008036	Drawn by: JLR	Sections	
			Fig. 4



© Archaeology South-East		Tonbridge Working Men's Club	Fig. 5
Project Ref: 3261	April 2008	Trench 2 looking south	
Report Ref: 2008036	Drawn by: JLR		



© Archaeology South-East		Tonbridge Working Men's Club	Fig. 6
Project Ref: 3261	April 2008	Trench 3 looking north	
Report Ref: 2008036	Drawn by: JLR		



© Archaeology South-East		Tonbridge Working Men's Club		Fig. 7
Project Ref: 3261	April 2008	Trench Location and Proposed Development		
Report Ref: 2008036	Drawn by: JLR			