

**ARCHAEOLOGICAL SOLUTIONS LTD**

**LAND AT 8 THE HIGHLANDS, EXNING, SUFFOLK**

**ARCHAEOLOGICAL MONITORING & RECORDING**

Authors: Laszlo Lichtenstein (Fieldwork and report)	
NGR: TL 6265 6590	Report No: 4577
District: Forest Heath	Site Code: EXG 103
Approved: Claire Halpin MIfA	Project No: 5658
Signed:	Date: May 2014

This report is confidential to the client. Archaeological Solutions Ltd accepts no responsibility or liability to any third party to whom this report, or any part of it, is made known. Any such party relies upon this report entirely at their own risk. No part of this report may be reproduced by any means without permission.

Archaeological Solutions is an independent archaeological contractor providing the services which satisfy all archaeological requirements of planning applications, including:

*Desk-based assessments and environmental impact assessments*  
*Historic building recording and appraisals*  
*Trial trench evaluations*  
*Geophysical surveys*  
*Archaeological monitoring and recording*  
*Archaeological excavations*  
*Post excavation analysis*  
*Promotion and outreach*  
*Specialist analysis*

**ARCHAEOLOGICAL SOLUTIONS LTD**

**Unit 6, Brunel Business Court, Eastern Way,  
Bury St Edmunds IP32 7AJ  
Tel 01284 765210**

**P I House, Rear of 23 Clifton Road, Shefford,  
Bedfordshire, SG17 5AF  
Tel: 01462 850483**

**e-mail [info@ascontracts.co.uk](mailto:info@ascontracts.co.uk)  
[www.archaeologicalsolutions.co.uk](http://www.archaeologicalsolutions.co.uk)**



[twitter.com/ArchaeologicalS](https://twitter.com/ArchaeologicalS)



[www.facebook.com/ArchaeologicalSolutions](https://www.facebook.com/ArchaeologicalSolutions)



## **CONTENTS**

### **OASIS SUMMARY**

#### **SUMMARY**

- 1 INTRODUCTION**
  - 2 DESCRIPTION OF THE SITE**
  - 3 TOPOGRAPHY, GEOLOGY AND SOILS**
  - 4 ARCHAEOLOGICAL & HISTORICAL BACKGROUND**
  - 5 METHODOLOGY**
  - 6 DESCRIPTION OF RESULTS**
  - 7 CONFIDENCE RATING**
  - 8 DEPOSIT MODEL**
  - 9 DISCUSSION**
  - 10 DEPOSITION OF THE ARCHIVE**
- ACKNOWLEDGEMENTS**  
**BIBLIOGRAPHY**

#### **APPENDIX 1 SPECIFICATION**

<b>Project details</b>			
Project name	<i>Land at 8 The Highlands, Exning, Suffolk</i>		
<i>In May 2014, Archaeological Solutions Ltd (AS) carried out a programme of continuous archaeological monitoring and recording of groundworks associated with the construction of a new dwelling, with garage and access on land at 8 The Highlands, Exning, Suffolk CB8 7NT (NGR TL 9644 4566). The works were required to comply with a planning condition attached to planning approval for the development (Forest Heath District Council ref: F/2012/0566/OUT).</i>			
<i>An Anglo-Saxon cemetery is indicated in the vicinity of the site by the presence of two inhumations and a number of grave goods (EXG 005, 028). A putative hilltop enclosure ditch containing pottery of regional importance has been identified 60m to the south (EXG 082). Isolated Iron Age, Roman and medieval finds were recovered from a buried soil horizon on the site (EXG 090). However, subsequent investigations around the site found nothing further relating to the enclosure or cemetery.</i>			
<i>In the event the monitoring revealed no archaeological features or finds.</i>			
Project dates (fieldwork)	6 <sup>th</sup> May 2014		
Previous work (Y/N/?)	N	Future work	N
P. number	5658	Site code	EXG 103
Type of project	<i>Archaeological Monitoring &amp; Recording</i>		
Site status	<i>Residential area</i>		
Current land use	<i>House and land</i>		
Planned development	<i>Construction of a new dwelling with garage and access</i>		
Main features (+dates)	<i>None</i>		
Significant finds (+dates)	<i>None</i>		
<b>Project location</b>			
County/ District/ Parish	<i>Suffolk</i>	<i>Forest Heath</i>	<i>Exning</i>
HER/ SMR for area	<i>Suffolk Historic Environment Record</i>		
Post code (if known)	<i>CB8 7NT</i>		
Area of site			
NGR	<i>TL 6265 6590</i>		
Height AOD (min/max)	<i>c. 32m AOD</i>		
<b>Project creators</b>			
Brief issued by	<i>Suffolk County Council Archaeological Service Conservation Team</i>		
Project supervisor/s (PO)	<i>Laszlo Lichtenstein</i>		
Funded by	<i>Mr Robert Gaskin</i>		
Full title	<i>Land at 8 The Highlands, Exning, Suffolk, Archaeological Monitoring and Recording</i>		
Authors	<i>Lichtenstein, L.</i>		
Report no.	<i>4577</i>		
Date (of report)	<i>May 2014</i>		

# LAND AT 8 THE HIGHLANDS, EXNING, SUFFOLK CB8 7NT

## SUMMARY

*In May 2014, Archaeological Solutions Ltd (AS) carried out a programme of continuous archaeological monitoring and recording of groundworks associated with the construction of a new dwelling, with garage and access on land at 8 The Highlands, Exning, Suffolk CB8 7NT (NGR TL 6265 6590). The works were required to comply with a planning condition attached to planning approval for the development (Forest Heath District Council ref: F/2012/0566/OUT).*

*An Anglo-Saxon cemetery is indicated in the vicinity of the site by the presence of two inhumations and a number of grave goods (EXG 005, 028). A putative hilltop enclosure ditch containing pottery of regional importance has been identified 60m to the south (EXG 082). Isolated Iron Age, Roman and medieval finds were recovered from a buried soil horizon on the site (EXG 090). However, subsequent investigations around the site found nothing further relating to the enclosure or cemetery.*

*In the event the monitoring revealed no archaeological features or finds.*

## 1 INTRODUCTION

1.1 In May 2014, Archaeological Solutions Ltd (AS) carried out a programme of continuous archaeological monitoring and recording of groundworks associated with the construction of a new dwelling, with garage and access on land at 8 The Highlands, Exning, Suffolk CB8 7NT (NGR TL 6265 6590; Figs. 1 - 2). The works were required to comply with a planning condition on approval for the development (Forest Heath District Council ref: F/2012/0566/OUT).

1.2 The archaeological monitoring was carried out in accordance with a brief by Suffolk County Council Archaeological Service Conservation Team (SCC AS-CT; dated 14<sup>th</sup> February 2014 Jess Tipper), and a specification compiled by AS (dated 17<sup>th</sup> February 2013). The monitoring adhered to the Institute for Archaeologists' *Code of Conduct* (revised 2008), and the procedures described in the *IfA Standard and Guidance for Watching Briefs* (revised 2008) and *Standards for Field Archaeology in the East of England* (Gurney 2003).

1.3 The project aimed to:

- Ensure the archaeological excavation and monitoring of all aspects of the development programme likely to affect buried archaeological remains;
- Secure the adequate recording of any archaeological remains revealed by the development programme;
- Secure the full analysis and interpretation of the site archive and the appropriate publication of the project results, if required;
- Secure the analysis, long-term conservation and storage of the project archive

### *Planning Policy Context*

1.4 The National Planning Policy Framework (NPPF 2012) states that those parts of the historic environment that have significance because of their historic, archaeological, architectural or artistic interest are heritage assets. The NPPF aims to deliver sustainable development by ensuring that policies and decisions that concern the historic environment recognise that heritage assets are a non-renewable resource, take account of the wider social, cultural, economic and environmental benefits of heritage conservation, and recognise that intelligently managed change may sometimes be necessary if heritage assets are to be maintained for the long term. The NPPF requires applications to describe the significance of any heritage asset, including its setting that may be affected in proportion to the asset's importance and the potential impact of the proposal.

1.5 The NPPF aims to conserve England's heritage assets in a manner appropriate to their significance, with substantial harm to designated heritage assets (i.e. listed buildings, scheduled monuments) only permitted in exceptional circumstances when the public benefit of a proposal outweighs the conservation of the asset. The effect of proposals on non-designated heritage assets must be balanced against the scale of loss and significance of the asset, but non-designated heritage assets of demonstrably equivalent significance may be considered subject to the same policies as those that are designated. The NPPF states that opportunities to capture evidence from the historic environment, to record and advance the understanding of heritage assets and to make this publicly available is a requirement of development management. This opportunity should be taken in a manner proportionate to the significance of a heritage asset and to impact of the proposal, particularly where a heritage asset is to be lost.

## **2 DESCRIPTION OF THE SITE**

2.1 Exning is situated 2km north-west of Newmarket in Suffolk, and is separated from it by the A14(T) trunk road. The site is located in a residential area on the east side of Exning off Windmill Hill. The site

comprises an area of lawn fronted by Windmill Hill, with a building on either side to the east and west.

### **3 TOPOGRAPHY, GEOLOGY AND SOILS**

3.1 The site is located at approximately 32m AOD on top of a small hill. A small stream runs 350m to the east. The local soils comprise well drained loamy soil of the Moulton association which overlies drift deposits over Middle Cretaceous Chalk.

### **4 ARCHAEOLOGICAL AND HISTORICAL BACKGROUND**

4.1 Exning was an important centre in Middle Saxon times as the location of the royal palace of King Anna. The historic Anglo-Saxon and medieval core of the town is located approximately 700m to the west of the site (EXG 098). In the 13<sup>th</sup> century merchants from Exning set up a new market on the Cambridge to Bury St Edmunds Road which became the town of Newmarket and Exning was largely surpassed.

4.2 At 7 The Highlands, a section was excavated across a substantial ditch, which is thought to form part of a large hilltop enclosure. The upper fills of the ditch contained one of the largest Late Bronze Age/ Early Iron Age pottery and worked flint assemblages known in Suffolk, and consequently is of regional importance. Fragments of nearly 800 separate vessels of a domestic nature were recovered, and a date range of 800-600/550 BC has been confirmed (EXG 082).

4.3 The reported location of an Anglo Saxon inhumation cemetery is centred on a point 100m west of the assessment site where an "Iron dagger was found in 1900". Additionally 4 cruciform brooches and a number of small-long brooches, and amber beads were recovered, although an excavation 1974-1975 found nothing. The site was built upon in 1976-1977 (EXG 005). However, two inhumation burials including one accompanied by an iron spearhead, shield boss, knife, stud, and small bronze fragments, were found during the excavation of house footings at a grid reference point touching the south-east corner of the site at 8 The Highlands (EXG 028). The inferred Anglo-Saxon cemetery EXG 005 therefore appears to be in the location of the development site, with the original grid reference a mislocation of the finds from the cemetery. However, after monitoring extensive footings at 'The Highlands' in 1998 and 1998, no further burials were found.

4.4. An archaeological trial trench evaluation was carried out on the prospective development site on land at 8, The Highlands. Isolated finds of Iron Age, Roman and medieval date were recovered from a buried soil horizon, but there was no indication of any activity relating

to either the nearby Iron Age enclosure or the Anglo-Saxon cemetery believed to lie partially under the property (EXG 090).

## 5 METHODOLOGY

5.1 The archaeological monitoring comprised the observation of all ground works for the new dwelling, inspection of subsoil and natural deposits for archaeological features, the examination of spoil heaps for archaeological finds and the recording of soil profiles. Deposits were recorded by means of *pro forma* recording sheets, drawn to scale and photographed as appropriate.

## 6 DESCRIPTION OF RESULTS (Figs. 3 - 4)

Sample sections of the stratigraphy encountered were recorded:

<i>Sample section 1</i> 0.00 = 32.14m AOD		
0.0 – 0.31m	L1000	Topsoil. Mid greyish black, firm sandy silt, with occasional rounded flint and small pebbles.
0.31 – 0.50m	L1001	Subsoil. Light brownish grey, firm sandy gravel, with occasional rounded flints.
0.50m+	L1002	Natural. Light yellowish brown, compact sandy gravel, with occasional flints and occasional chalk fragments.

<i>Sample section 2</i> 0.00 = 32.27m AOD		
0.0 – 0.26m	L1000	Topsoil. See above, sample section 1
0.26 – 0.46m	L1001	Subsoil. See above, sample section 1
0.46m+	L1002	Natural. See above, sample section 1

<i>Sample section 3</i> 0.00 = 32.32m AOD		
0.0 – 0.10m	L1003	Levelling layer. Light yellowish grey, firm silty gravel, with occasional small rounded flint and chalk flecks.
0.10 – 0.29m	L1000	Topsoil. See above, sample section 1
0.29 – 0.57m	L1001	Subsoil. See above, sample section 1
0.57m+	L1002	Natural. See above, sample section 1

<i>Sample section 4</i> 0.00 = 32.19m AOD		
0.0 – 0.20m	L1000	Topsoil. See above, sample section 1
0.20 – 0.45m	L1001	Subsoil. See above, sample section 1
0.45m+	L1002	Natural. See above, sample section 1



<i>Sample section 5</i> 0.00 = 32.26m AOD		
0.0 – 0.32m	L1000	Topsoil. See above, sample section 1
0.32 – 0.55m	L1001	Subsoil. See above, sample section 1
0.55m	L1002	Natural. See above, sample section 1

*Description:* No archaeological features or finds were present.

## **7 CONFIDENCE RATING**

7.1 Within the parameters of monitoring during the groundworks it is not felt that any factors inhibited the recognition of archaeological features or finds.

## **8 DEPOSIT MODEL**

8.1 Uppermost was Topsoil L1000, a mid greyish black, firm sandy silt, with occasional rounded flint and small pebbles. L1000 overlay Subsoil L1001, a light brownish grey, firm sandy gravel, with occasional rounded flints. Below L1001 was the natural, L1002, a light yellowish brown, compact sandy gravel, with occasional flints and occasional chalk fragments (c.0.45 – 0.55m below the present day ground surface).

## **9 DISCUSSION**

9.1 The site is an area of high archaeological potential being in the immediate area of an early Anglo-Saxon cemetery (recorded as HER EXG 005 and EXG 008). Between 1894 and 1911 an Early Saxon cemetery containing inhumations with grave goods was excavated on Windmill Hill, with the majority of burials centred on the 6<sup>th</sup> century (EXG 005). Two Early Saxon inhumations were also found on Windmill Hill during digging of house footings at The Highlands (EXG 028). One was a warrior burial with iron spear and shield boss, the other was unaccompanied, and these indicate either two cemeteries in close proximity or a single large cemetery. It also lies within the area of a large Iron Age enclosure (EXG 028). At No.7 The Highlands, an archaeological trench was excavated across a large ditch and a pottery assemblage of regional importance dating mainly to the Early Iron Age, some a little earlier, was recovered (EXG 028). The ditch is believed to belong to a large hilltop enclosure of unknown extent. A 100m wide circular enclosure to the east of the site may also be prehistoric (EXG 015). An evaluation carried out in 2009 by SCC AS (EXG 090) revealed no archaeological remains.

9.2 In the event no archaeological features or finds were present.

## **10 DEPOSITION OF THE ARCHIVE**

10.1 Archive records, with an inventory, will be deposited at the Suffolk County Store. The archive will be quantified, ordered, indexed, cross-referenced and checked for internal consistency. In addition to the overall site summary, it will be necessary to produce a summary of the artefactual and ecofactual data.

10.2 The archive will be deposited within six months of the conclusion of the fieldwork. It will be prepared in accordance with the UK Institute for Conservation's *Conservation Guideline No.2* and according to the document *Deposition of Archaeological Archives in Suffolk* (SCC AS Conservation Team, 2010).

## **ACKNOWLEDGEMENTS**

AS thanks Mr Robert Gaskin for funding the work and for his assistance, and Ms Sarah Threlfall of TMA Chartered Surveyors for her assistance.

AS would also like to acknowledge the input and advice of the Suffolk County Council Archaeological Service Conservation Team, in particular Dr Jess Tipper.

## **BIBLIOGRAPHY**

British Geological Survey (BGS), 1978, *Legend for the 1:625,000 Geological map of the United Kingdom (solid geology)*: London. Mansfield

Gurney, D., 2003, *Standards for Field Archaeology in the East of England*. East Anglian Archaeology Occasional Papers 14/ALGAO

Institute of Field Archaeologists (now Institute for Archaeologists), 1994 (revised 2008), *Standard and Guidance for An Archaeological Watching Brief*. IfA Reading.

Soil Survey of England and Wales (SSEW), 1983, *Legend for the 1:250,000 Soil Map of England and Wales*. SSEW, Harpenden

**APPENDIX 1      SPECIFICATION**

**LAND AT 8 THE HIGHLANDS, EXNING, SUFFOLK CB8 7NT**

**WRITTEN SCHEME OF INVESTIGATION FOR  
CONTINUOUS ARCHAEOLOGICAL MONITORING/RECORDING**

**17<sup>th</sup> February 2014**

Archaeological Solutions is an independent archaeological contractor providing the services which satisfy all archaeological requirements of planning applications, including:

*Desk-based assessments and environmental impact assessments*  
*Historic building recording and appraisals*  
*Trial trench evaluations*  
*Geophysical surveys*  
*Archaeological monitoring and recording*  
*Archaeological excavations*  
*Post excavation analysis*  
*Promotion and outreach*  
*Specialist analysis*

**ARCHAEOLOGICAL SOLUTIONS LTD**

**Unit 6, Brunel Business Court, Eastern Way,  
Bury St Edmunds IP32 7AJ  
Tel 01284 765210**

**PI House, r/o 23 Clifton Road, Shefford SG17 5AF  
Tel 01462 850483**

e-mail [info@ascontracts.co.uk](mailto:info@ascontracts.co.uk)  
[www.archaeologicalsolutions.co.uk](http://www.archaeologicalsolutions.co.uk)



[twitter.com/ArchaeologicalS](https://twitter.com/ArchaeologicalS)



[www.facebook.com/ArchaeologicalSolutions](https://www.facebook.com/ArchaeologicalSolutions)



# **LAND AT 8 THE HIGHLANDS, EXNING, SUFFOLK CB8 7NT ARCHAEOLOGICAL MONITORING & RECORDING**

## **1 INTRODUCTION**

1.1 This specification (written scheme of investigation) has been prepared in response to a brief issued by Suffolk County Council Archaeological Service Conservation Team (SCC AS-CT, Jess Tipper, dated 14<sup>th</sup> February 2014). It provides for continuous archaeological monitoring/recording of groundworks associated with the construction of a new detached dwelling, with garage and access on land at 8 The Highlands, Exning, Suffolk CB8 7NT (NGR TL 626 659). The works are required to comply with a planning condition on approval for the development (Forest Heath Council Ref. F/2012/0566/OUT).

## **2 COMPLIANCE**

2.1 The brief has been read and understood. If AS carried out the programme of archaeological works, AS would comply with SCC AS-CT's requirements.

## **3 SITE & DEVELOPMENT DESCRIPTION ARCHAEOLOGICAL BACKGROUND**

3.1 The site lies on the southern side of Windmill Hill, Exning, and comprises part of the rear garden plot of 8 The Highlands, which lies to the immediate east. It is proposed to construct a new detached dwelling with garage and new access.

3.2 The Suffolk Historic Environment Record notes that the site is an area of high archaeological potential, in the immediate area of an early Anglo-Saxon cemetery (recorded as HER EXG 005 and EXG 008). Between 1894 and 1911 an Early Saxon cemetery containing inhumations with grave goods was excavated on Windmill Hill, with the majority of burials centred on the 6<sup>th</sup> century (EXG 005). Two Early Saxon inhumations were also found on Windmill Hill during digging of house footings at The Highlands (EXG 028). One was a warrior burial with iron spear and shield boss, the other was unaccompanied, and these indicate either two cemeteries in close proximity or a single large cemetery. It also lies within the area of a large Iron Age enclosure (EXG 028). At No.7 The Highlands, an archaeological trench was excavated across a large ditch and a pottery assemblage of regional importance dating mainly to the Early Iron Age, some a little earlier, was recovered (EXG 028). The ditch is believed to belong to a large hilltop enclosure of unknown extent. A 100m wide circular enclosure to the east of the site may also be prehistoric (EXG 015). An evaluation

carried out in 2009 by SCC AS (EXG 090) revealed no archaeological remains.

3.3 The detailed project background will be presented in the project report, with reference to the Suffolk Historic Environment Record.

#### **4 BRIEF FOR ARCHAEOLOGICAL MONITORING ARRANGEMENTS FOR ARCHAEOLOGICAL MONITORING SPECIFICATION FOR MONITORING OF GROUNDWORKS**

4.1 As set out in the brief (Sections 2 -4).

##### *4.2 Research Design*

4.2.1 The regional research frameworks are set out in Glazebrook (1997 and Brown & Glazebrook (2000) and updated by Medlycott and Brown (2008) and Medlycott (2011). Research topics for the Iron Age set out by Bryant (in Brown & Glazebrook 2000, 14-18) include further research into chronologies, precise dating and ceramic assemblages, further research into the development of the agrarian economy (particularly with regard to field systems), research into settlement chronology and dynamics, research into processes of economic and social change during the late Iron Age and Romano-British transition (particularly with regard to the development of Aylesford/Swarling and Roman culture, and also regional differences and tribal polities in the late Iron Age and further research into *oppida* and ritual sites), further analysis of development of social organisation and settlement form/function in the early and middle Iron Age, further research into artefact production and distribution and the Bronze Age/Iron Age transition. Medlycott & Brown (2008) and Medlycott (2011, 29-32) build on these themes, paying particular attention to chronological and spatial development and variation and adding subjects as the Bronze Age/Iron Age transition and manufacturing and industry.

4.2.2 Wade (in Brown & Glazebrook 2000, 23-26) identifies research topics for the rural landscape in the Saxon and medieval periods. These include examination of population during this period (distribution and density, as well as physical structure), settlement (characterisation of form and function, creation and testing of settlement diversity models), specialisation and surplus agricultural production, assessment of craft production, detailed study of changes in land use and the impact of colonists (such as Saxons, Danes and Normans) as well as the impact of the major institutions such as the Church. Ayers (in Brown & Glazebrook, 2000) discusses more 'urban' research topics in more detail. For demography, issues include assessment of population structures, density and mobility, urban sustainability, immigration and rural colonisation and housing/provisioning. For social organisation, issues include assessment of the impact of royal villas, major institutions and the Church on urban settlement, territorial

boundaries in proto-urban and urban settlements, the effect of national political developments, ranking and status in settlements, spatial analysis, wealth distribution, specialism, acquisition of raw materials, building form and function, markets and commercial/corporate activity. Economic issues of the above also need to be considered, particularly with regard to industrial zoning. The impact of culture and religion could include issues such as identifying characteristics of urban culture, its growth, complexity and values. The Church and its influence on the burgeoning towns must also be addressed. As Murphy notes in Brown and Glazebrook (2000, 31), urban environmental archaeology should be approached by analysis of environmental 'events', processes and study of relationships with producing sites in the rural hinterland.

4.2.3 Medlycott (2011, 57) states that the study of the Anglo-Saxon period still requires further cooperation between historians and archaeologists. Important research issues for this period comprise: the Roman/Anglo-Saxon transitional period; settlement distribution, which suffers from problems associated with the identification of Saxon settlement sites; population modelling and demographics, which has the potential to be advanced by modern scientific methods; differences within the region in terms of settlement type and economic practice and subjects related to this such as links with the continent, trading practices and cultural influences; rural landscapes and settlements, including detailed study of the changes and developments in such settlements over time and the influence of Saxon landscape organisation and settlements on these issues in the medieval period; towns and their relationships with their hinterland; infrastructure, including river management, the identification of ports and harbours and the role of existing infrastructure in shaping the Saxon period landscape; the economy, based on palaeoenvironmental studies; ritual and religion; the effect of the Danish occupation; and artefact studies (Medlycott 2011, 57-59).

4.2.4 As set out above, the principal research objectives will be to identify any further evidence of the early Anglo-Saxon inhumation cemetery known from the immediate area, and any further evidence of the Iron Age enclosure located here.

## References

Brown, N & Glazebrook, J (eds), 2000, *Research and Archaeology: A Framework for the Eastern Counties. 2. Research Agenda and Strategy*, East Anglian Archaeology Occasional Papers 8

Glazebrook, J (eds), 1997, *Research and Archaeology: A Framework for the Eastern Counties. 1. Resource Assessment*, East Anglian Archaeology Occasional Papers 3

Gurney, D, 2003, *Standards for Field Archaeology in the East of England*, East Anglian Archaeology Occasional Paper 14

Medlycott, M & Brown, N, 2008, *Revised East Anglian Archaeological Research Frameworks*, [www.eaareports/algaoee](http://www.eaareports/algaoee)

Medlycott, M. (ed.) 2011, *Research and Archaeology revisited: a revised framework for the East of England*, ALGAO East of England Region, East Anglian Archaeology Occasional Papers 24

## **5 ARCHAEOLOGICAL MONITORING**

5.1 The brief requires the recovery of a record of archaeological deposits that may be damaged or removed by any development (including services and landscaping). A Method Statement is provided (Appendix 2). The main objective surrounds the potential for the groundworks for the development to produce evidence for the early occupation of the area.

5.2 The brief requires the continuous monitoring of all groundworks in order to provide a record of any archaeological deposits which might be damaged or removed by any development (including services and landscaping) permitted by the current planning consent. Any ground works, and also the upcast soil, are to be closely monitored during and after stripping in order to ensure no damage occurs to any heritage assets. Adequate time is to be allowed for archaeological recording of archaeological deposits during excavation, and of soil sections following excavation.

5.3 The programme of work will include the following stages:

- Initial clearance of soil/overburden under archaeological observation;
- Inspection of sub-soil deposits for archaeological features and environmental deposits;
- The rapid investigation and recording of any archaeological features/deposits;
- Sub-soil stripping under archaeological supervision;
- Examination of any service and foundation trenches and subsequent recording of any exposed archaeological deposits;
- Rapid examination of spoil-heaps for archaeological material;
- A programme of post-fieldwork analysis, archiving and publication, as appropriate to the results of the project.

5.4 All of the above stages and operations will be carried out in accordance with MAP2 (EH 1991) and MoRPHE (2006).

### **Stage Details**



5.5 **Site clearance:** under archaeological observation

5.6 **Excavation and recording:** of those features which cannot be preserved and will be substantially disturbed. In accordance with the following standards:

- excavation of all discrete features
- all industrial features to be sampled for appropriate scientific analysis
- full written records of each context and all contexts to be planned
- sampling will adhere to the guidelines prepared by English Heritage (*Environmental Archaeology; A guide to the theory and practice of methods, from sampling and recovery to post-excavation*, 2011).

5.7 **Archaeological Observation and Recording** of all groundworks

- Observation of all groundworks, and subsequent recording of archaeological deposits
- Inspection of subsoil for archaeological features
- Investigation and recording of any exposed archaeological features/deposits
- Examination of spoil-heaps for archaeological material
- If significant remains are identified a meeting will be convened with the client and SCC AS-CT in order to agree an appropriate investigation
- A programme of post-excavation field work analysis, archiving and publication

5.8 Where possible effective **mitigation measures** will be devised according to the circumstances on site, in consultation with SCC AS-CT.

5.9 The resultant project report will follow the principles of MoRPHE (as set out in the brief, section 5.6).

5.10 *Staffing*

Details of Archaeological Solutions Limited staff and specialist contractors are provided (Appendix 1).

5.11 *Method Statement*

The investigation will adhere to the IFA's *Standard and Guidance for Archaeological Excavations* and *Watching Briefs* and (revised 2008), in addition to the ALGAO East of England *Standards for Field*

*Archaeology in the East of England* (Gurney 2003). A Method Statement for dealing with archaeological remains, where present, is presented (Appendix 1).

## **6 HEALTH AND SAFETY**

### **6.1 Risk Assessment**

A risk assessment will be completed before the work on site commences

### **6.2 Advice**

Archaeological Solutions Limited is a member of FAME, formerly the Standing Conference of Archaeological Unit Managers (SCAUM) and operates under the 'Health & Safety in Field Archaeology Manual'.

### **6.3 Insurances**

Archaeological Solutions Limited is a member of the Council for British Archaeology and is insured under their policy for members.

## **7 REPORT REQUIREMENTS**

7.1 The report will include, as appropriate:

- a) The archaeological background
- b) A consideration of the aims and methods adopted in the course of the recording
- c) A detailed account of the nature, location, extent, date, significance and quality of any archaeological evidence recorded
- d) A section/s drawing showing the depth of deposits including present ground level with Ordnance Datum, vertical and horizontal scale
- e) Excavation methodology and detailed results including a suitable conclusion and discussion
- f) Plans and sections of any recorded features and deposits
- g) Discussion and interpretation of the evidence. An assessment of the project's significance in a regional and local context and appendices
- h) All specialist reports or assessments
- i) A concise non-technical summary of the project results
- j) A HER/OASIS summary sheet as required

7.2 A summary report will be prepared for inclusion in the annual 'Archaeology in Suffolk' section of the *Proceedings of the Suffolk Institute of Archaeology*.

## **8 ARRANGEMENTS FOR ACCESS**

8.1 Access to the site is to be arranged by the client.

## **9 SERVICES & CONSTRAINTS, SECURITY**

9.1 The client is to advise AS of the position of any services which traverse the site and any constraints which are present e.g. Tree Preservation Orders, Rights of Way.

9.2 Throughout all site works care will be taken to maintain all existing security arrangements and to minimise disruption.

## **10 FINDS**

10.1 As set out in the brief (Section 5) and below (Appendix 1).

## **11 ARCHIVE**

11.1 The requirements for archive storage will be agreed with the Suffolk HER, and the archive deposited there.

11.2 The archive will be deposited within three months of the conclusion of the fieldwork.

11.3 The archive will be prepared in accordance with the UK Institute for Conservation's *Conservation Guideline No.2* and according to the document *Deposition of Archaeological Archives in Suffolk* (SCC AS Conservation Team, 2010). A unique event number will be obtained from the County HER Officer.

11.4 The full archive of finds and records will be made secure at all stages of the project, both on and off site. Arrangements will be made at the earliest opportunity for the archive to be accessed into the collections of the HER; with the landowner's permission in the case of any finds. It is acknowledged that it is the responsibility of the field investigation organisation to make these arrangements with the landowner and Museums Service. The archive will be adequately catalogued, labelled and packaged for transfer and storage in accordance with the guidelines set out in the United Kingdom Institute for Conservation's *Conservation Guidelines No.2* and the other relevant reference documents.

11.5 Archive records, with inventory, are to be deposited, as well as any donated finds from the site, at the HER and in accordance with their requirements. The archive will be quantified, ordered, indexed, cross-referenced and checked for internal consistency. In addition to the overall site summary, it will be necessary to produce a summary of the artefactual and ecofactual data.

## **12 MONITORING**

12.1 It is understood that the project will be monitored by SCC AS-CT.

## **13 OASIS PROJECT REPORTING**

13.1 The results of the project will be reported to the OASIS Project.

## APPENDIX 1

### ARCHAEOLOGICAL SOLUTIONS LIMITED PROFILES OF KEY STAFF & SPECIALISTS

#### DIRECTOR

**Claire Halpin BA MifA**

*Qualifications:* Archaeology & History BA Hons (1974-77).

Oxford University Dept for External Studies In-Service Course (1979-1980).

Member of Institute of Archaeologists since 1985: IFA Council member (1989-1993)

*Experience:* Claire has 25 years' experience in field archaeology, working with the Oxford Archaeological Unit and English Heritage's Central Excavation Unit (now the Centre for Archaeology). She has directed several major excavations (e.g. Barrow Hills, Oxfordshire, and Irthlingborough Barrow Cemetery, Northants), and is the author of many excavation reports e.g. St Ebbe's, Oxford: *Oxoniensia* 49 (1984) and 54 (1989). Claire moved into the senior management of field archaeological projects with Hertfordshire Archaeological Trust (HAT) in 1990, and she was appointed Manager of HAT in 1996. From the mid 90s HAT has enlarged its staff complement and extended its range of skills. In July 2003 HAT was wound up and Archaeological Solutions was formed. The latter maintains the same staff complement and services as before. AS undertakes the full range of archaeological services nationwide.

#### DIRECTOR

**Tom McDonald MifA**

*Qualifications:* Member of the IfA

*Experience:* Tom has twenty years' experience in field archaeology, working for the North-Eastern Archaeological Unit (1984-1985), Buckinghamshire County Museum (1985), English Heritage (Stanwick Roman villa (1985-87) and Irthlingborough barrow excavations, Northamptonshire (1987)), and the Museum of London on the Royal Mint excavations (1986-7)., and as a Senior Archaeologist with the latter (1987-Dec 1990). Tom joined HAT at the start of 1991, directing several major multi-period excavations, including excavations in advance of the A41 Kings Langley and Berkhamsted bypasses, the A414 Cole Green bypass, and a substantial residential development at Thorley, Bishop's Stortford. He is the author of many excavation reports, exhibitions etc. Tom is AS's Health and Safety Officer and is responsible for site management, IT and CAD. He specialises in prehistoric and urban archaeology, and is a Lithics Specialist.

#### OFFICE MANAGER

**Rose Flowers**

*Experience:* Rose has a very wide range of book-keeping skills developed over many years of employment with a range of companies, principally Rosier Distribution Ltd, Harlow (now part of Securicor) where she managed eight accounts staff. She has a good working knowledge of both accounting software and Microsoft Office.

#### OFFICE ADMINISTRATOR

**Sarah Powell**

*Experience:* Sarah is an experienced and efficient administrative assistant with more than ten years experience of working in a variety of office environments. She is IT literate and proficient in the use of Microsoft Word, particularly Microsoft Excel. She has completed NVQ 2 & 3 in Administration and Office Skills. She recently attended and completed a course in Microsoft Excel – Advanced Level.

#### **SENIOR PROJECTS MANAGER**

**Jon Murray BA MifA**

*Qualifications:* History with Landscape Archaeology BA Hons (1985-1988).

*Experience:* Jon has been employed by HAT (now AS) continually since 1989, attaining the position of Senior Projects Manager. Jon has conducted numerous archaeological investigations in a variety of situations, dealing with remains from all periods, throughout London and the South East, East Anglia, the South and Midlands. He is fluent in the execution of (and now project-manages) desk-based assessments/EIAs, historic building surveys (for instance the recording of the Royal Gunpowder Mills at Waltham Abbey prior to its rebirth as a visitor facility), earthwork and landscape surveys, all types of evaluations/excavations (urban and rural) and environmental archaeological investigation (working closely with Dr Rob Scaife), preparing many hundreds of archaeological reports dating back to 1992. Jon has also prepared numerous publications; in particular the nationally-important Saxon site at Gamlingay, Cambridgeshire (*Anglo-Saxon Studies in Archaeology & History*). Other projects published include Dean's Yard, Westminster (*Medieval Archaeology*), Brackley (*Northamptonshire Archaeology*), and a medieval cemetery in Haverhill he excavated in 1997 (*Proceedings of the Suffolk Institute of Archaeology*). Jon is a member of the senior management team, principally preparing specifications/tenders, co-ordinating and managing the field teams. He also has extensive experience in preparing and supporting applications for Scheduled Monument Consent/Listed Building Consent

#### **PROJECT OFFICER**

**Zbigniew Pozorski MA**

*Qualifications:* University of Wroclaw, Poland, Archaeology (1995-2000, MA 2003)

*Experience:* Zbigniew has archaeological experience dating from 1995 when as a student he joined an academic group of excavators. He was involved in numerous archaeological projects throughout the Lower Silesia region in southwest Poland and a number of projects in old town of Wroclaw. During his university years he specialized in medieval urban archaeology. He had his own research project working on an early/high medieval stronghold in Pietrzykow. He was a member of a University team which located and excavated an unknown high medieval castle in Wierzbna, Poland. Zbigniew has worked for archaeological contractors in Poland on several projects as a supervisor where he gained experience in all types of evaluations and excavations in urban and rural areas. Recently he worked in Ireland where he completed two large long-term projects for Headland Archaeology Ltd. He joined AS in January 2008 as a Project Officer.

Zbigniew is qualified in the Construction Skills Certification Scheme (CSCS) and is a qualified in First Aid at Work (St Johns Ambulance).

**SUPERVISOR****Gareth Barlow MSc**

*Qualifications:* University of Sheffield, MSc Environmental Archaeology & Palaeoeconomy (2002-2003)  
King Alfred's College, Winchester, Archaeology BA (Hons) (1999-2002)

*Experience:* Gareth worked on a number of excavations in Cambridgeshire before pursuing his degree studies, and worked on many archaeological projects across the UK during his university days. Gareth joined AS in 2003 and has worked on numerous archaeological projects throughout the South East and East Anglia with AS. Gareth was promoted to Supervisor in the Summer 2007.

Gareth is qualified in the Construction Skills Certification Scheme (CSCS) and is a qualified in First Aid at Work (St Johns Ambulance).

**SUPERVISOR****Stephen Quinn BSc**

Stephen Quinn joined AS as a Site Assistant 2009, and in 2012 was promoted to the role of Supervisor. After graduating in Archaeology and Palaeoecology at Queens University Belfast, he worked for several commercial archaeology units including on Neolithic settlement and burial sites and a Bronze Age henge monument in Northern Ireland; early industrial pottery productions sites in Glasgow, and urban Roman excavation in Lincoln. In 2012 Stephen has been heading AS' excavation of a Roman fenland settlement site at Soham, Cambridgeshire.

Steve is qualified in the Construction Skills Certification Scheme (CSCS) and is a qualified in First Aid at Work (St Johns Ambulance).

**SUPERVISOR****Kamil Orzechowski BA, MA**

Kamil Orzechowski joined AS in 2012, as an experienced field archaeologist after spending five years in various commercial archaeology units working on large-scale construction projects including railways and pipelines. Before becoming a field archaeologist, Kamil graduated from the Institute of Ethnology and Cultural Anthropology, Adam Mickiewicz University, Poznan, Poland.

Kamil is qualified in the Construction Skills Certification Scheme (CSCS).

**SUPERVISOR****Samuel Egan BSc**

Samuel Egan joined AS in 2012 as an experienced field archaeologist after working on a range of excavations in Northamptonshire including a large-scale road project, community projects, evaluation and excavation projects, and geophysical surveys. Samuel graduated from Bournemouth University with two degrees: Fdsc Field Archaeology and BSc (hons.) Field Archaeology.

Samuel is qualified in the Construction Skills Certification Scheme (CSCS) and is a qualified in First Aid at Work.

**SUPERVISOR**  
**PhD**

**Laszlo Lichtenstein MA, MSc,**

Laszlo Lichtenstein joined AS in 2012 as a Supervisor, highly experienced in a range of archaeological project management, field archaeology and archaeozoology. Laszlo has extensive experience spanning Hungary, and later Northamptonshire, including directing evaluation and excavation projects; managing project set-up including written schemes of investigation, desk-based assessments and geophysical survey; and post-excavation analysis. Laszlo completed his academic studies at University of Szeged, Hungary, including his PhD on geophysical and archaeological investigations of late Bronze Age to early Iron Age settlements in south-east Hungary, and has published numerous articles on his areas of research.

Laszlo is qualified in the Construction Skills Certification Scheme (CSCS) and is a qualified in First Aid at Work.

**PROJECT OFFICER**

**(DESK-BASED ASSESSMENTS)**

**Kate Higgs MA (Oxon)**

*Qualifications:* University of Oxford, St Hilda's College  
Archaeology & Anthropology MA (Oxon) (2001-2004)

*Experience:* Kate has archaeological experience dating from 1999, having taken part in clearance, surveying and recording of stone circles in the Penwith area of Cornwall. During the same period, she also assisted in compiling a database of archaeological and anthropological artefacts from Papua New Guinea, which were held in Scottish museums. Kate has varied archaeological experience from her years at Oxford University, including participating in excavations at a Roman amphitheatre and an early church at Marcham/ Frilford in Oxfordshire, with the Bamburgh Castle Research Project in Northumberland, which also entailed the excavation of human remains at a Saxon cemetery, and also excavating, recording and drawing a Neolithic chambered tomb at Prissé, France. Kate has also worked in the environmental laboratory at the Museum of Natural History in Oxford, and as a finds processor for Oxford's Institute of Archaeology. Since joining AS in November 2004, Kate has researched and authored a variety of reports, concentrating on desk-based assessments in advance of archaeological work and historic building recording.



**ASSISTANT PROJECTS MANAGER  
(POST-EXCAVATION)**

**Andrew Newton MPhil PIFA**

*Qualifications:* University of Bradford, MPhil (2002-04)  
University of Bradford, BSc (Hons) Archaeology (1998-2002)  
University of Bradford, Dip Professional Archaeological  
Studies (2002)

*Experience:* Andrew has carried out geophysical surveys for GeoQuest Associates on sites throughout the UK and has worked as a site assistant with BUFAU. During 2001 he worked as a researcher for the Yorkshire Dales Hunter-Gatherer Research Project, a University of Bradford and Michigan State University joint research programme, and has carried out voluntary work with the curatorial staff at Beamish Museum in County Durham. Andrew is a member of the Society of Antiquaries of Newcastle-upon-Tyne and a Practitioner Member of the Institute for Archaeologists. Since joining AS in early Summer 2005, as a Project Officer writing desk-based assessments, Andrew has gained considerable experience in post-excavation work. His principal role with AS is conducting post-excavation research and authoring site reports for publication. Significant post-excavation projects Andrew has been responsible for include the Ingham Quarry Extension, Fornham St. Genevieve, Suffolk – a site with large Iron Age pit clusters arranged around a possible wetland area; the late Bronze Age to early Iron Age enclosure and early Saxon cremation cemetery at the Chalet Site, Heybridge, Essex; and, Church Street, St Neots, Cambridgeshire, an excavation which identified the continuation of the Saxon settlement previously investigated by Peter Addyman in the 1960s. Andrew also writes and co-ordinates Environmental Impact Assessments and has worked on a variety of such projects across southern and eastern England. In addition to his research responsibilities Andrew undertakes outreach and publicity work and carries out some fieldwork.

**PROJECT OFFICER  
(POST-EXCAVATION)**

**Antony Mustchin BSc MSc DipPAS**

*Qualifications:* University of Bradford BSc (Hons) Bioarchaeology (1999-2003)  
University of Bradford MSc Biological Archaeology (2004-2005)  
University of Bradford Diploma in Professional Archaeological  
Studies (2003)

*Experience:* Antony has 11 years' experience in field archaeology, gained during his higher education and in the professional sector. Commercially in the UK, Antony has worked for Archaeology South East (2003), York Archaeological Trust (2004) and Special Archaeological Services (2003). He has also undertaken a six-month professional placement as Assistant SMR Officer/ Development Control Officer with Kent County Council (2001-2002). Antony is part-way through writing up a PhD on Viking Age demographics, a long-term academic interest that has led to his gaining considerable research excavation experience across the North Atlantic. He has worked for projects and organisations including the Old Scatness & Jarlshof Environs Project, Shetland (2000-2003), the Viking Unst Project, Shetland (2006-2007), the Heart of the Atlantic Project/ Føroya Fornminnisavni, Faroe Islands (2006-2008) and City University New York/ National Museum of Denmark/ Greenland National Museum and Archives, Greenland (2006 & 2010). Shortly before joining Archaeological Solutions in November 2011, Antony spent three years working for the Independent Commission for the Location

of Victims Remains, assisting in the search for and forensic recovery of “the remains of victims of paramilitary violence ("The Disappeared") who were murdered and buried in secret arising from the conflict in Northern Ireland”. Antony has a broad experience of fieldwork and post-excavation practice including specialist (archaeofauna), teaching, supervisory and directing-level posts.

**POTTERY, LITHICS AND  
CBM RESEARCHER**

**Andrew Peachey BA MfA**

*Qualifications:* University of Reading BA Hons, Archaeology and History  
(1998-2001)

*Experience:* Andrew joined AS (formerly HAT) in 2002 as a pottery researcher, and rapidly expanded into researching CBM and lithics. Andrew specialises in prehistoric and Roman pottery and has worked on numerous substantial assemblages, principally from across East Anglia but also from southern England. Recent projects have included a Neolithic site at Coxford, Norfolk, an early Bronze Age domestic site at Shropham, Norfolk, late Bronze Age material from Panshanger, Hertfordshire, middle Iron Age pit clusters at Ingham, Suffolk and an Iron Age and early Roman riverside site at Dernford, Cambridgeshire. Andrew has worked on important Roman kiln assemblages, including a Nar Valley ware production site at East Winch Norfolk, a face-pot producing kiln at Hadham, Hertfordshire and is currently researching early Roman Horningsea ware kilns at Waterbeach, Cambridgeshire. Andrew is an enthusiastic member of the Study Group for Roman Pottery, and also undertakes pottery and lithics analysis as an ‘external’ specialist for a range of archaeological units and local societies in the south of England.

**POTTERY RESEARCHER**

**Peter Thompson MA**

*Qualifications:* University of Bristol BA (Hons), Archaeology (1995-1998)  
University of Bristol MA; Landscape Archaeology (1998-1999)

*Experience:* As a student, Peter participated in a number of projects, including the excavation of a Cistercian monastery cemetery in Gascony and surveying an Iron Age promontory hillfort in Somerset. Peter has two years excavation experience with the Bath Archaeological Trust and Bristol and Region Archaeological Services which includes working on a medieval manor house and a post-medieval glass furnace site of national importance. Peter joined HAT (now AS) in 2002 to specialise in Iron Age, Saxon and Medieval pottery research and has also produced desk-based assessments. Pottery reports include an early Iron pit assemblage and three complete Early Anglo-Saxon accessory vessels from a cemetery in Dartford, Kent.

**PROJECT OFFICER  
(OSTEOARCHAEOLOGY)**

**Julia Cussans PhD**

*Qualifications:* University of Bradford, PhD (2002-2010)  
University of Bradford, BSc (Hons) Bioarchaeology (1997-2001)  
University of Bradford, Dip. Professional Archaeological Studies (2001)

*Experience:* Julia has c. 12 years of archaeozoological experience. Whilst undertaking her part time PhD she also worked as a specialist on a variety of projects in northern Britain including Old Scatness (Shetland), Broxmouth Iron Age Hillfort and Binchester Roman Fort. Additionally Julia has extensive field experience and has held lead roles in excavations in Shetland and the Faroe Islands including, Old Scatness, a large multi-period settlement centred on an Iron Age Broch; the Viking Unst Project, an examination of Viking and Norse houses on Britain's most northerly isle; the Laggan Tormore Pipeline (Firths Voe), a Neolithic house site in Shetland; the Heart of the Atlantic Project, an examination of Viking settlement in the Faroes and Við Kirkjugarð, an early Viking site on Sanday, Faroe Islands. Early on in her career Julia also excavated at Sedgeford, Norfolk as part of SHARP and in Pompeii, Italy as part of the Anglo-American Project in Pompeii. Since joining AS in October 2011 Julia has worked on animal bone assemblages from Beck Row, a Roman villa site at Mildenhall, Suffolk and Sawtry, an Iron Age, fen edge site in Cambridgeshire. Julia is a full and active member of the International Council for Archaeozoology, the Professional Zooarchaeology Group and the Association for Environmental Archaeology.

**ENVIRONMENTAL ARCHAEOLOGIST**

**Dr John Summers**

*Qualifications:* 2006-2010: PhD "The Architecture of Food" (University of Bradford)  
2005-2006: MSc Biological Archaeology (University of Bradford)  
2001-2005: BSc Hons. Bioarchaeology (University of Bradford)

*Experience:* John is an archaeobotanist with a primary specialism in the analysis of carbonised plant macrofossils and charcoal. Prior to joining Archaeological Solutions, John worked primarily in Atlantic Scotland. His research interests involve using archaeobotanical data in combination with other archaeological and palaeoeconomic information to address cultural and economic research questions. John has made contributions to a number of large research projects in Atlantic Scotland, including the Old Scatness and Jarlshof Environs Project (University of Bradford), the Viking Unst Project (University of Bradford) and publication work for Bornais Mound 1 and Mound 2 (Cardiff University). He has also worked with plant remains from Thruxton Roman Villa, Hampshire, as part of the Danebury Roman Environs Project (Oxford University/ English Heritage). John's role at AS is to analyse and report on assemblages of plant macro-remains from environmental samples and provide support and advice regarding environmental sampling regimes and sample processing. John is a member of the Association for Environmental Archaeology.

**SENIOR GRAPHICS OFFICER****Kathren Henry**

*Experience:* Kathren has twenty-five years experience in archaeology, working as a planning supervisor on sites from prehistoric to late medieval date, including urban sites in London and rural sites in France/Italy, working for the Greater Manchester Archaeological Unit, Passmore Edwards Museum, DGLA and Central Excavation Unit of English Heritage (at Stanwick and Irthlingborough, Northamptonshire). She has worked with AS (formerly HAT) since 1992, becoming Senior Graphics Officer. Kathren is AS's principal photographer, specializing in historic building survey, and she manages AS's photographic equipment and dark room. She is in charge of AS's Graphics Department, managing computerised artwork and report production. Kathren is also the principal historic building surveyor/illustrator, producing on-site and off-site plans, elevations and sections.

**HISTORIC BUILDING RECORDING****Tansy Collins BSc**

*Qualifications:* University of Sheffield, Archaeological Sciences BSc (Hons) (1999-2002)

*Experience:* Tansy's archaeological experience has been gained on diverse sites throughout England, Ireland, Scotland and Wales. Tansy joined AS in 2004 where she developed skills in graphics, backed by her grasp of archaeological interpretation and on-site experience, to produce hand drawn illustrations of pottery, and digital illustrations using a variety of packages such as AutoCAD, Corel Draw and Adobe Illustrator. She joined the historic buildings team in 2005 in order to carry out both drawn and photographic surveys of historic buildings before combining these skills with authoring historic building reports in 2006. Since then Tansy has authored numerous such reports for a wide range of building types; from vernacular to domestic architecture, both timber-framed and brick built with date ranges varying from the medieval period to the 20<sup>th</sup> century. These projects include a number of regionally and nationally significant buildings, for example a previously unrecognised medieval aisled barn belonging to a small group of nationally important agricultural buildings, one of the earliest surviving domestic timber-framed houses in Hertfordshire, and a Cambridgeshire house retaining formerly hidden 17<sup>th</sup> century decorative paint schemes. Larger projects include The King Edward VII Sanatorium in Sussex, RAF Bentley Priory in London as well as the Grade I Listed Balls Park mansion in Hertfordshire.

**HISTORIC BUILDING RECORDING****Lisa Smith BA**

*Qualifications:* University of York, BA Archaeology (1998-2001)

*Experience:* Lisa has nine years archaeological experience undertaken mainly in the north of England previously working as a senior site assistant for Field Archaeology Specialists in York on both rural and urban sites as well as Castle Sinclair Girnigoe and Tarbat in Scotland. Prior to working for FAS Lisa was involved in various excavation projects for Oxford Archaeology North and Archaeological Services, University of Durham. Lisa joined AS as a supervisor in January 2008 and in November 2009 transferred to historic building recording and has since worked on a variety of buildings dating from the medieval period onwards, working closely with external consultant Dr Lee Prosser.

**GRAPHICS OFFICER****Rosanna Price BSc**

*Qualifications:* University of Kent, Medical Anthropology BSc (Hons) (2005 - 2008)

*Experience:* Rosanna's interests have always revolved around art and human history, and she has combined these throughout her work and education. During her degree she specialised in Osteoarchaeology and Palaeopathology, and personally instigated the University's photographic database of human remains. This experience gained her the post of Osteoarchaeologist at Kent Osteological Research and Analysis in early 2009, where she worked on a number of human bone collections including the Thanet Earth Skeletons. In January 2010 she joined AS as a Finds and Archives assistant, and by the summer had achieved a new role as graphics officer. In her current position Rosanna uses a range of computer programmes, such as AutoCAD, Adobe Illustrator and CorelDraw to produce digital figures and finds illustrations. These accompany a wide range of archaeological reports, from desk-based assessments and interim reports through to publication standard.

**FINDS AND ARCHIVE ASSISTANT****Adam Leigh**

*Experience:* Adam joined AS in January 2012. In his time with the company he has helped process hundreds of finds from a variety of sites going on to concord them. Adam has helped prepare a large number of sites for deposition with museums making sure that the finds are prepared in strict accordance with the guidelines and requirements laid out by the receiving museum.

**ASSISTANT ARCHIVES OFFICER****Karen Cleary**

*Experience:* Karen started her administrative career as Youth Training Administrator for a training company (TSMA Ltd) in 1993, where she provided administrative support for NVQ Assessors' of trainees and apprentices on the youth training scheme and in work placements they'd helped set up. Amongst her administrative duties she was principally in charge of preparing the Training Credits Claims and sending off for government funding. She gained NVQ's Level's 2 and 3 in Administration whilst working in this role. Karen started out with AS as Office Assistant in February 2009 and within a few months was promoted to Archives Assistant. Principally her role involves the preparation of Archaeological archives for long term deposition with museums. She has developed a good understanding of the preparation process and follows each individual museum's guidelines closely. She has a good working knowledge of Microsoft Office and is competent with *FileZilla*- Digital File Transfer software and *Fastsum*-Checksum Creation software.

## **ARCHAEOLOGICAL SOLUTIONS: PRINCIPAL SPECIALISTS**

GEOPHYSICAL SURVEYS	Stratascan Ltd
AIR PHOTOGRAPHIC ASSESSMENTS	Air Photo Services
PHOTOGRAPHIC SURVEYS	Ms K Henry
PREHISTORIC POTTERY	Mr A Peachey
ROMAN POTTERY	Mr A Peachey
SAXON & MEDIEVAL POTTERY	Mr P Thompson
POST-MEDIEVAL POTTERY	Mr P Thompson
FLINT	Mr A Peachey
GLASS	H Cool
COINS	British Museum, Dept of Coins & Medals
METALWORK & LEATHER	Ms Q Mould, Ms N Crummy
SLAG	Ms J Cowgill
ANIMAL BONE	Dr J Cussans
HUMAN BONE:	Ms J Curl
ENVIRONMENTAL CO-ORDINATOR	Dr R Scaife
POLLEN AND SEEDS:	Dr R Scaife
CHARCOAL/WOOD	Dr J Summers
SOIL MICROMORPHOLOGY	Dr R MacPhail, Dr C French
CARBON-14 DATING:	English Heritage Ancient Monuments Laboratory (for advice).
CONSERVATION	University of Leicester

## **APPENDIX 2 METHOD STATEMENT**

Method Statement for the recording of archaeological remains

The archaeological evaluation will be conducted in accordance with the project brief, and the code of the Institute of Field Archaeologists.

### **1 Mechanical Excavation**

1.1 Mechanical excavation will be monitored by an experienced archaeologist.

### **2 Site Location Plan**

2.1 On conclusion of the mechanical excavation, a 'site location plan', based on the current Ordnance Survey 1:1250 map and indicating site north, will be prepared. This will be supplemented by an 'area plan' at 1:200 (or 1:100) which will show the location of the area(s) investigated in relationship to the development area, OS grid and site grid.

### **3 Manual Cleaning & Base Planning of Archaeological Features**

3.1 Exposed areas will be hand-cleaned to define archaeological features sufficient to produce a base plan.

### **4 Full Excavation**

#### *Excavation of Stratified Sequences*

The trenches will be excavated according to phase, from the most recent to the earliest, and the phasing of features will be distinguished by their stratigraphic relationships, fills and finds.

Deep features e.g. quarry holes, may incorporate stratified deposits which will be excavated by hand-dug sections and recorded.

### *Excavation of Buildings*

Building remains are likely to comprise stake holes, post holes and slots/gullies, masonry foundations and low masonry walls. Associated features may be present e.g. hearths.

The features comprising buildings will be excavated in plan/phase where revealed, as appropriate to the project

### *Full Excavation*

Industrial remains and intrinsically interesting features e.g. hearths, burials will clearly merit full excavation where revealed. Discrete features associated with the possible structure and/or settlement will be fully excavated.

### *Ditches*

The ditches will be excavated in segments up to 2m long, and the segments will be placed to provide adequate coverage of the ditches, establish their relationships and obtain samples and finds.

## **5 Written Record**

5.1 All archaeological deposits and artefacts encountered during the course of the excavation will be fully recorded on the appropriate context, finds and sample forms.

5.2 The site will be recorded using AS's excavation manual which is directly comparable to those used by other professional archaeological organisations, including English Heritage's own Central Archaeological Service.

## **6 Photographic Record**

6.1 An adequate photographic record of the investigations will be made. It will include black and white prints and colour transparencies (on 35mm) illustrating in both detail and general context the principal features and finds discovered. It will also include 'working and promotional shots' to illustrate more generally the nature of the archaeological operations. The black and white negatives and contacts will be filed, and the colour transparencies will be mounted using appropriate cases. All photographs will be listed and indexed.



## **7 Drawn Record**

7.1 A record of the full extent, in plan, of all archaeological deposits encountered will be drawn on A1 permatrace. The plans will be related to the site, or OS, grid and be drawn at a scale of 1:50 or 1:20, as appropriate. In addition where appropriate, e.g. recording an inhumation, additional plans at 1:10 will be produced. The sections of all archaeological contexts will be drawn at a scale of 1:10 or, where appropriate, 1:20. The OD height of all principal strata and features will be calculated and indicated on the appropriate plans and sections.

## **8 Recovery of Finds**

### **GENERAL**

The principal aim is to ensure that adequate provision is made for the recovery of finds from all archaeological deposits.

The Small Finds, e.g. complete pots or metalwork, from all excavations will be 3-dimensionally recorded.

A metal detector will be used to enhance finds recovery. The metal detector survey will be conducted on conclusion of the topsoil stripping, and thereafter during the course of the excavation. The spoil tips will also be surveyed. Regular metal detector surveys of the excavation area and spoil tips will reduce the loss of finds to unscrupulous users of metal detectors (treasure hunters). All non-archaeological staff working on the site should be informed that the use of metal detectors is forbidden.

### **WORKED FLINT**

When flint knapping debris is encountered large-scale bulk samples will be taken for sieving.

### **POTTERY**

It is important that the excavators are aware of the importance of pottery studies and therefore the recovery of good ceramic assemblages.

The pottery assemblages are likely to provide important evidence to be able to date the structural history and development of the site.

The most important assemblages will come from 'sealed' deposits which are representative of the nature of the occupation at various dates, and indicate a range of pottery types and forms available at different periods.

'Primary' deposits are those which contain sherds contemporary with the soil fill and in simple terms this often means large sherds with unabraded edges. The sherds have usually been deposited shortly after being broken and have remained undisturbed. Such sherds are more reliable in indicating a more precise date at which the feature was 'in use'. Conversely, 'secondary' deposits are those which often have small, heavily abraded sherds lacking obvious conjoins. The sherds are derived from earlier deposits.

## **HUMAN BONE**

Should human remains be discovered, which is possible on this site, and be required to be removed, the coroner will be informed and a licence from the Ministry of Justice sought immediately; both the client and the monitoring officer will also be informed. Any excavation of human remains would only be carried out following advice from SCC AS-CT. Excavators would be made aware, and comply with, provisions of Section 25 of the Burial Act of 1857 and pay due attention to the requirements of Health & Safety.

## **ANIMAL BONE**

Animal bone is one of the principal indicators of diet. As with pottery the excavators will be alert to the distinction of primary and secondary deposits. It will also be important that the bone assemblages are derived from dateable contexts.

## **ENVIRONMENTAL SAMPLING**

The sampling will adhere to the guidelines prepared by English Heritage (2011) and the specialist will make his results known to Helen Chapell who co-ordinates environmental archaeology in the region on behalf of English Heritage. If important environmental remains are present a visit to the site by an environmental specialist will be arranged

Environmental sampling will follow guidelines outlined in *Working papers of the Association for Environmental Archaeology, No. 2: Environmental archaeology and archaeological evaluation* (1995) and *Environmental Archaeology; a guide to the theory and practice of methods, from sampling and recovery to post-excavation*, Centre for Archaeology Guidelines (2011).

## **FINDS PROCESSING**

The project director will have overall responsibility for the finds and will liaise with AS's own finds personnel and the relevant specialists. A person with particular responsibility for finds on site will be appointed for the excavation. The person will ensure that the finds are properly labelled and packaged on site for transportation to AS's field base. The finds processing will take place in tandem with the excavations and will be under the supervision of AS's Finds Officer.

The finds processing will entail first aid conservation, cleaning (if appropriate), marking (if appropriate), categorising, bagging, labelling, boxing and basic cataloguing (the compilation of a Small Finds Catalogue and quantification of bulk finds) i.e. such that the finds are ready to be made available to the specialists. The Finds Officer, having been advised by the Project Officer and relevant specialists, will select material for conservation. AS's Finds Officer, in conjunction with the Project Officer, will arrange for the specialists to view the finds for the purpose of report writing.

# OASIS DATA COLLECTION FORM: England

[List of Projects](#) | [Manage Projects](#) | [Search Projects](#) | [New project](#) | [Change your details](#) | [HER coverage](#) | [Change country](#) | [Log out](#)

## Printable version

**OASIS ID: archaeol7-178115**

### Project details

Project name	8 The Highlands, Exning, Suffolk CB8 7NT
Short description of the project	In May 2014, Archaeological Solutions Ltd (AS) carried out a programme of continuous archaeological monitoring and recording of groundworks associated with the construction of a new dwelling, with garage and access on land at 8 The Highlands, Exning, Suffolk CB8 7NT (NGR TL 9644 4566). The works were required to comply with a planning condition attached to planning approval for the development (Forest Heath District Council ref: F/2012/0566/OUT). An Anglo-Saxon cemetery is indicated in the vicinity of the site by the presence of two inhumations and a number of grave goods (EXG 005, 028). A putative hilltop enclosure ditch containing pottery of regional importance has been identified 60m to the south (EXG 082). Isolated Iron Age, Roman and medieval finds were recovered from a buried soil horizon on the site (EXG 090). However, subsequent investigations around the site found nothing further relating to the enclosure or cemetery. In the event the monitoring revealed no archaeological features or finds.
Project dates	Start: 06-05-2014 End: 06-05-2014
Previous/future work	No / No
Any associated project reference codes	P5658 - Contracting Unit No.
Any associated project reference codes	EXG 103 - Sitecode
Type of project	Recording project
Site status	None
Current Land use	Other 5 - Garden
Monument type	NONE None
Significant Finds	NONE None
Investigation type	"Watching Brief"
Prompt	Planning condition

### Project location

Country	England
Site location	SUFFOLK FOREST HEATH EXNING 8 The Highlands, Exning, Suffolk CB8 7NT
Postcode	CB8 7NT

Study area 0 Square metres  
 Site coordinates TL 6265 6590 52.2667362793 0.383842041329 52 16 00 N 000 23 01 E Point  
 Height OD / Depth Min: 32.00m Max: 32.00m

### Project creators

Name of Organisation Archaeological Solutions Ltd  
 Project brief originator SCC AS Conservation Team  
 Project design originator Jon Murray  
 Project director/manager Jon Murray  
 Project supervisor Laszlo Lichtenstein  
 Name of sponsor/funding body Mr Robert Gaskin

### Project archives

Physical Archive Exists? No  
 Digital Archive recipient Suffolk County Archaeological Store  
 Digital Contents "Survey"  
 Digital Media available "Images raster / digital photography","Survey","Text"  
 Paper Archive recipient Suffolk County Archaeological Store  
 Paper Contents "Survey"  
 Paper Media available "Drawing","Photograph","Plan","Report","Survey "

### Project bibliography 1

Publication type Grey literature (unpublished document/manuscript)  
 Title Land at 8 The Highlands, Exning, Suffolk  
 Author(s)/Editor(s) Lichtenstein, L  
 Other bibliographic details Archaeological Solutions Report No. 4577  
 Date 2014  
 Issuer or publisher Archaeological Solutions Ltd  
 Place of issue or publication 2014  
 Entered by Sarah Powell (Info@ascontracts.co.uk)  
 Entered on 16 October 2014

# OASIS:

Please e-mail [English Heritage](#) for OASIS help and advice

© ADS 1996-2012 Created by [Jo Gilham and Jen Mitcham](#), email Last modified Wednesday 9 May 2012

Cite only: <http://www.oasis.ac.uk/form/print.cfm> for this page

# PHOTOGRAPHIC INDEX



1  
General shot of site at commencement of strip



2  
Sample section 1 looking north-east



3  
Sample section 2 looking south-east



4  
Sample section 3 looking south-east



5  
Sample section 4 looking south-east



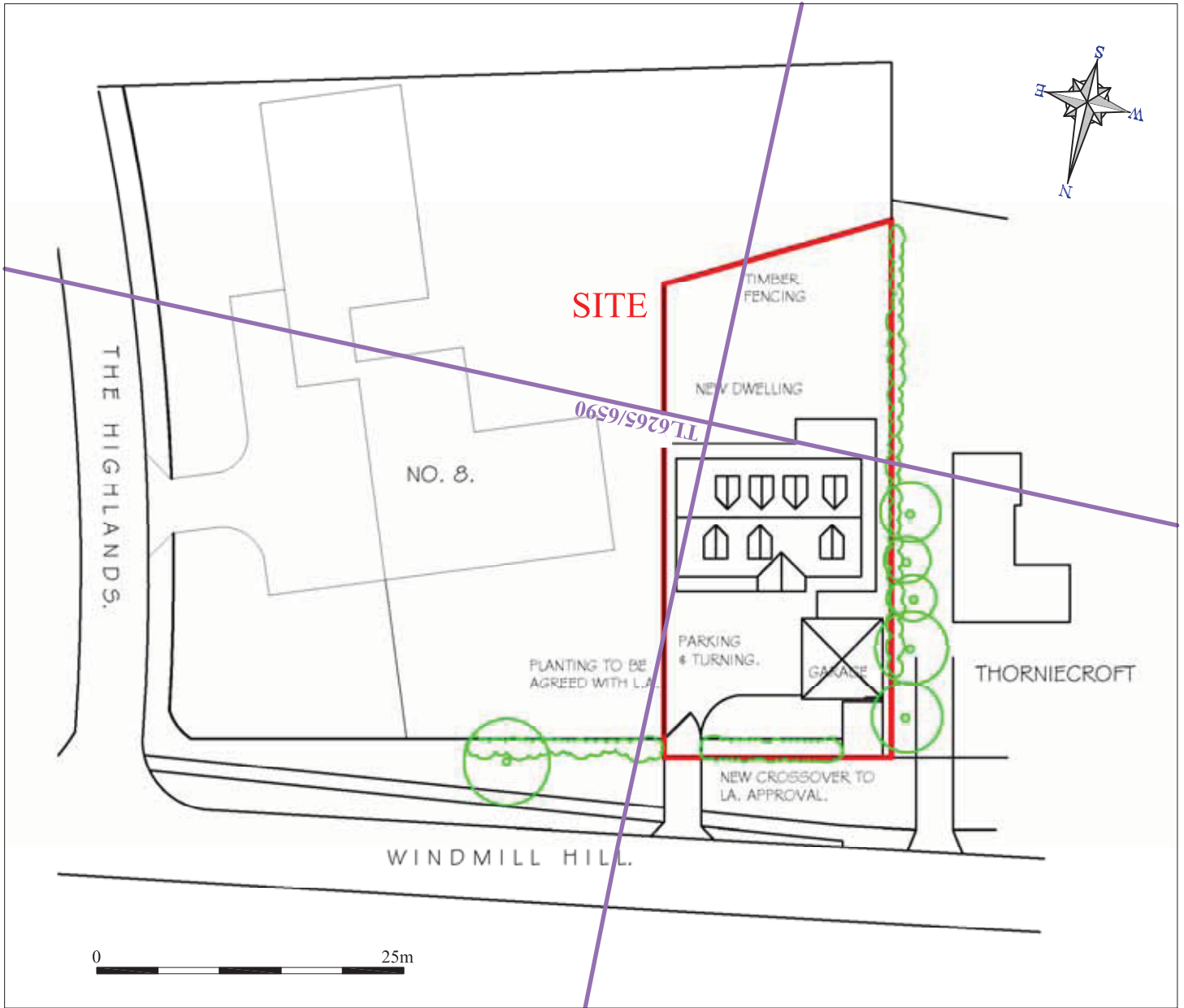
6  
Sample section 5 looking north-west



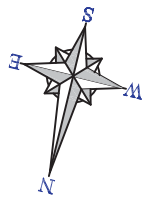
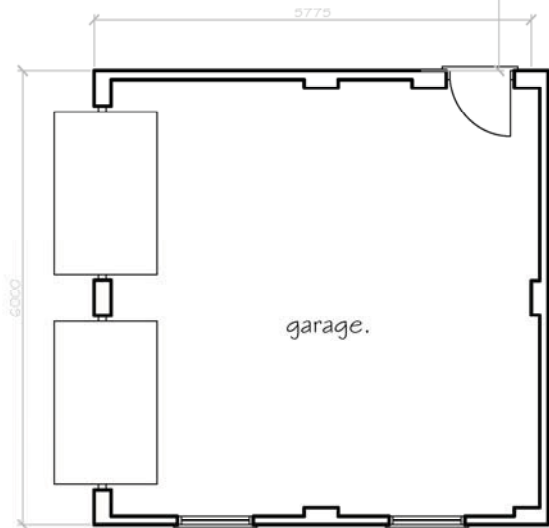
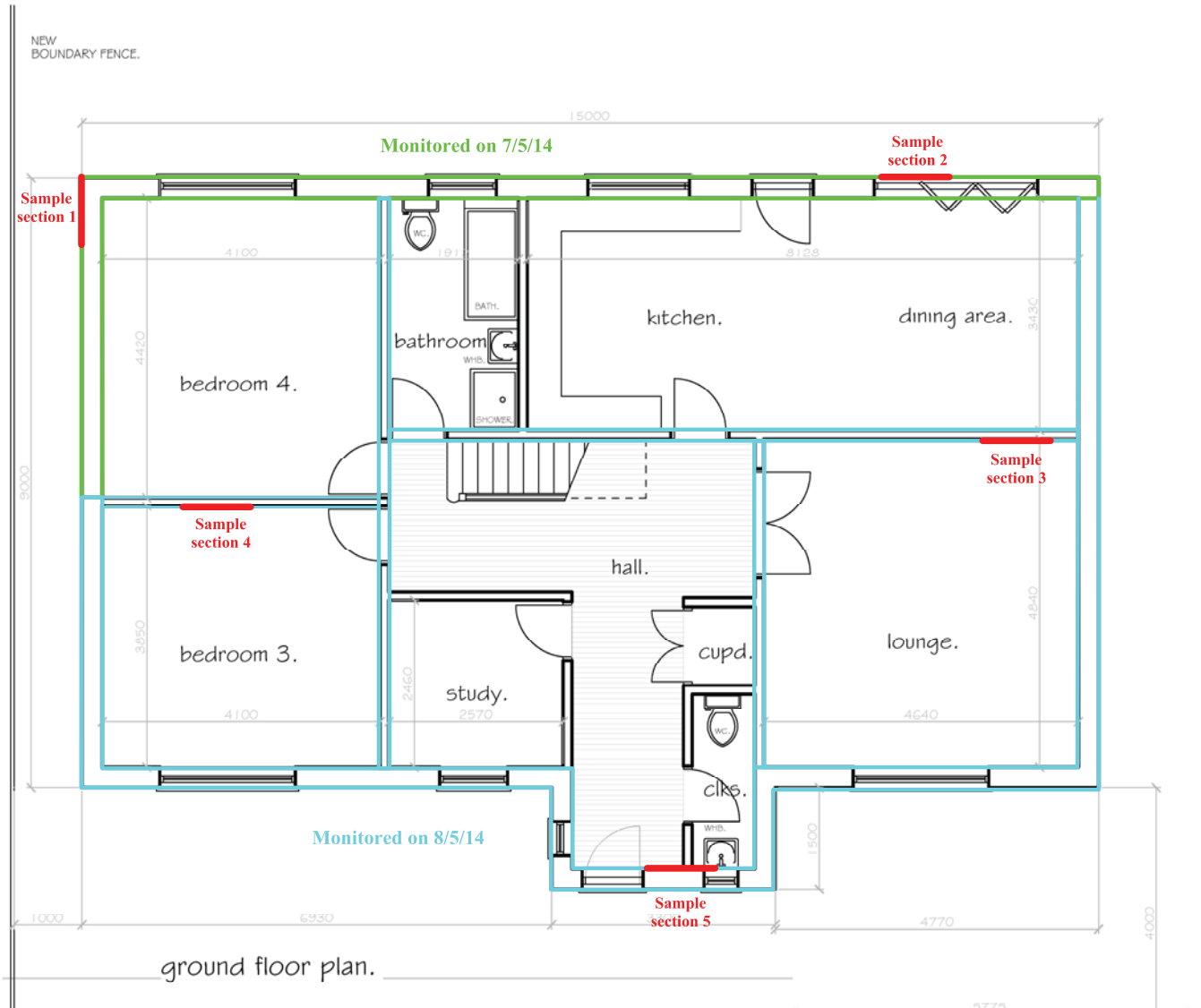
Reproduced from the 1999 Ordnance Survey 1:25000 map with the permission of Her Majesty's Stationery Office. © Crown copyright Archaeological Solutions Ltd Licence number 100036680

*Archaeological Solutions Ltd*  
**Fig. 1 Site location plan**  
 Scale 1:25,000 at A4





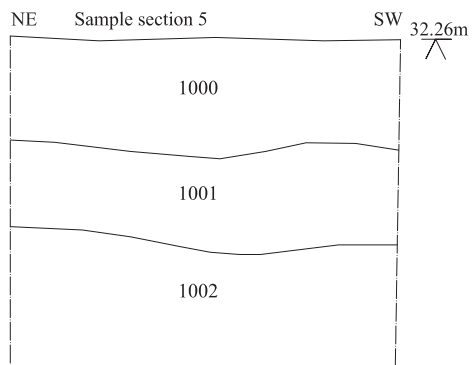
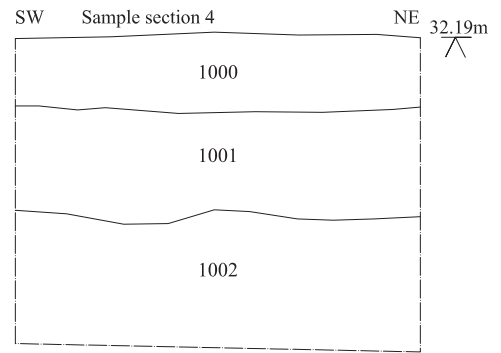
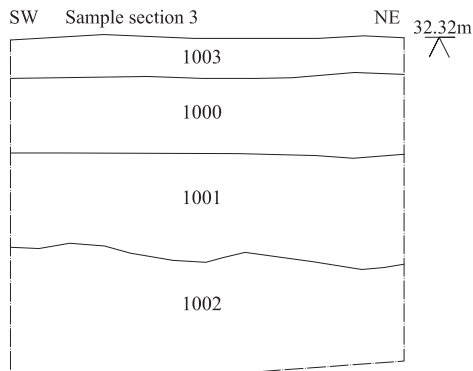
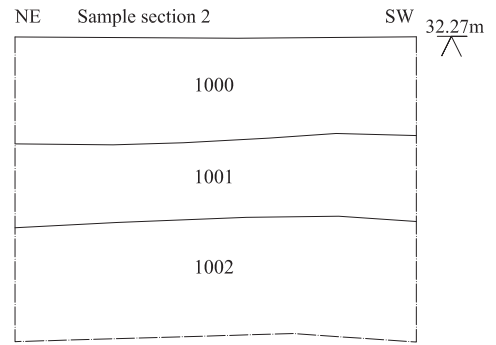
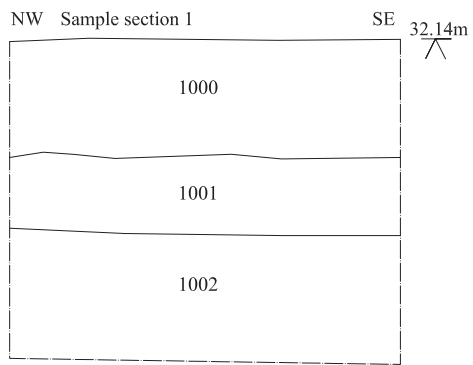
Archaeological Solutions Ltd  
**Fig. 2 Detailed site location plan**  
 Scale 1:1250 at A4



Archaeological Solutions Ltd

**Fig. 3 Sample section locations**

Scale 1:100 at A4



*Archaeological Solutions Ltd*  
**Fig. 4 Sample sections**  
 Scale 1:50 at A4