

Archaeological Solutions Ltd

**LAND TO THE REAR OF THE FOX AND HOUNDS PH,
THE STREET, LYNG, NORFOLK NR9 5AL**

ARCHAEOLOGICAL EVALUATION

Authors: Kamil Orzechowski (Fieldwork and report) Thompson, P. (Research)	
NGR: TG 0685 1788	Report No: 4728
District: Breckland	Site Code: ENF 135 423
Approved: Claire Halpin MfA	Project No: 6034
Signed:	Date: 20 November 2014

This report is confidential to the client. Archaeological Solutions Ltd accepts no responsibility or liability to any third party to whom this report, or any part of it, is made known. Any such party relies upon this report entirely at their own risk. No part of this report may be reproduced by any means without permission.

Archaeological Solutions is an independent archaeological contractor providing the services which satisfy all archaeological requirements of planning applications, including:

Desk-based assessments and environmental impact assessments
Historic building recording and appraisals
Trial trench evaluations
Geophysical surveys
Archaeological monitoring and recording
Archaeological excavations
Post excavation analysis
Promotion and outreach
Specialist analysis

ARCHAEOLOGICAL SOLUTIONS LTD

**Unit 6, Brunel Business Court, Eastern Way,
Bury St Edmunds IP32 7AJ
Tel 01284 765210**

**P I House, Rear of 23 Clifton Road, Shefford,
Bedfordshire, SG17 5AF
Tel: 01462 850483**

**e-mail info@ascontracts.co.uk
www.archaeologicalsolutions.co.uk**



twitter.com/ArchaeologicalS



www.facebook.com/ArchaeologicalSolutions



CONTENTS

OASIS SUMMARY SHEET

SUMMARY

- 1 *INTRODUCTION***
- 2 *DESCRIPTION OF THE SITE***
- 3 *TOPOGRAPHY, GEOLOGY AND SOILS***
- 4 *ARCHAEOLOGICAL AND HISTORICAL BACKGROUND***
- 5 *METHODOLOGY***
- 6 *DESCRIPTION OF RESULTS***
- 7 *CONFIDENCE RATING***
- 8 *DEPOSIT MODEL***
- 9 *DISCUSSION***
- 10 *DEPOSITION OF THE ARCHIVE***

ACKNOWLEDGEMENTS

BIBLIOGRAPHY

WEB SITES

OASIS SUMMARY SHEET

Project details			
Project name	<i>Land to Rear of Fox & Hounds PH, The Street, Lyng, Norfolk NR9 5LA</i>		
<p><i>In November 2014 Archaeological Solutions (AS) carried out an archaeological trial trench evaluation of land to the rear of the Fox and Hounds PH, The Street, Lyng, Norfolk NR9 5AL (NGR TG 0685 1788). It is proposed to construct a residential development of three dwellings to the rear of the public house. Norfolk County Council Historic Environment Team (NCC HES) have advised the LPA that a trial trench evaluation of the site should be carried out to provide further information prior to the determination of the planning application submitted for the development (Breckland Council Planning Ref. 3PL/2014/1012/F), in order to identify the presence of any archaeological remains for which further mitigation may be required.</i></p> <p><i>Within the one trench, two ditches and two gullies were recorded. The linears were parallel, all aligned N/S and closely spaced. They did not intercut. The features were possibly broadly contemporary and may be of relatively recent date: Ditch F1005 contained a 17th century brick fragment and a modern (19th century) brick fragment. The features were broadly parallel with the western boundary of the church.</i></p>			
Project dates (fieldwork)	<i>November 2014</i>		
Previous work (Y/N/?)	<i>N</i>	Future work (Y/N/?)	<i>N</i>
P. number	<i>6034</i>	Site code	<i>ENF 135 423</i>
Type of project	<i>Archaeological Evaluation</i>		
Site status	<i>None</i>		
Current land use	<i>Rear of PH</i>		
Planned development	<i>Residential</i>		
Main features (+dates)	<i>Linears (ditches and gullies)</i>		
Significant finds (+dates)	<i>Post medieval and modern CBM</i>		
Project location			
County/ District/ Parish	<i>Norfolk</i>	<i>Breckland</i>	<i>Lyng</i>
HER/ SMR for area	<i>Norfolk Historic Environment Record</i>		
Post code (if known)	<i>NR9 5LA</i>		
Area of site	<i>Approximately 1700m²</i>		
NGR	<i>TG 0685 1788</i>		
Height AOD (min/max)	<i>c.16m AOD</i>		
Project creators			
Brief issued by	<i>Norfolk County Council Historic Environment Service</i>		
Project supervisor/s (PO)	<i>Kamil Orzechowski</i>		
Funded by	<i>Bracken Developments</i>		
Full title	<i>Land to Rear of Fox & Hounds PH, The Street, Lyng, Norfolk NR9 5LA. An Archaeological Evaluation.</i>		
Authors	<i>Orzechowski, K.</i>		
Report no.	<i>4728</i>		
Date (of report)	<i>November 2014</i>		

LAND TO THE REAR OF THE FOX AND HOUNDS, THE STREET, LYNG, NORFOLK NR9 5AL

ARCHAEOLOGICAL EVALUATION

SUMMARY

In November 2014 Archaeological Solutions (AS) carried out an archaeological trial trench evaluation of land to the rear of the Fox and Hounds PH, The Street, Lyng, Norfolk NR9 5AL (NGR TG 0685 1788; Figs. 1-2). It is proposed to construct a residential development of three dwellings to the rear of the public house. Norfolk County Council Historic Environment Team (NCC HES) have advised the LPA that a trial trench evaluation of the site should be carried out to provide further information prior to the determination of the planning application submitted for the development (Breckland Council Planning Ref. 3PL/2014/1012/F), in order to identify the presence of any archaeological remains for which further mitigation may be required.

The archaeological potential of the site stemmed from its location in the historic core of Lyng, adjacent to the medieval churchyard. The church has a 13th century west tower, and 15th century and later work (NHER 3061). A medieval moated site lies to the east of the church (NHER 16744) and the village preserves earthworks of medieval to post-medieval enclosures to the south and north of the proposed development site (e.g. NHER 50734; 12303, 50737). The Fox and Hounds PH is a mid to late 17th century building (NHER 32292). The site thus had a potential for further evidence of medieval and post-medieval village activity and also for remains associated with the adjacent medieval churchyard (including a potential for buried human remains).

Within the one trench, two ditches and two gullies were recorded. The linears were parallel, all aligned N/S and closely spaced. They did not intercut. The features were possibly broadly contemporary and may be of relatively recent date: Ditch F1005 contained a 17th century brick fragment and a modern (19th century) brick fragment. The features were broadly parallel with the western boundary of the church.

1 INTRODUCTION

1.1 In November 2014 Archaeological Solutions (AS) carried out an archaeological trial trench evaluation of land to the rear of the Fox and Hounds PH, The Street, Lyng, Norfolk NR9 5AL (NGR TG 0685 1788; Figs. 1-2). It is proposed to construct a residential development of three dwellings to the rear of the public house. Norfolk County Council

Historic Environment Team (NCC HES) have advised the LPA that a trial trench evaluation of the site should be carried out to provide further information prior to the determination of the planning application submitted for the development (Breckland Council Planning Ref. 3PL/2014/1012/F), in order to identify the presence of any archaeological remains for which further mitigation may be required.

1.2 The evaluation was undertaken in accordance to a generic brief prepared by the Norfolk CC Historic Environment Service (NCC HES; 24/09/12) and a written scheme of investigation (specification) prepared by AS (dated 12th November 2014), and approved by NCC HES. The project conformed to the Institute for Archaeologists (IfA) *Code of Conduct and Standard and Guidance for an Archaeological Evaluation Brief* (revised 2008), as well as the document *Standards for Field Archaeology in the East of England* (Gurney 2003).

1.3 The objectives of the evaluation were to determine the presence/absence, date, extent, state of preservation and significance of any archaeological layers or subsoil archaeological features, in order to identify if any further mitigation is required as part of the development.

Planning policy context

1.4 The National Planning Policy Framework (NPPF 2012) states that those parts of the historic environment that have significance because of their historic, archaeological, architectural or artistic interest are heritage assets. The NPPF aims to deliver sustainable development by ensuring that policies and decisions that concern the historic environment recognise that heritage assets are a non-renewable resource, take account of the wider social, cultural, economic and environmental benefits of heritage conservation, and recognise that intelligently managed change may sometimes be necessary if heritage assets are to be maintained for the long term. The NPPF requires applications to describe the significance of any heritage asset, including its setting that may be affected in proportion to the asset's importance and the potential impact of the proposal.

1.5 The NPPF aims to conserve England's heritage assets in a manner appropriate to their significance, with substantial harm to designated heritage assets (i.e. listed buildings, scheduled monuments) only permitted in exceptional circumstances when the public benefit of a proposal outweighs the conservation of the asset. The effect of proposals on non-designated heritage assets must be balanced against the scale of loss and significance of the asset, but non-designated heritage assets of demonstrably equivalent significance may be considered subject to the same policies as those that are designated. The NPPF states that opportunities to capture evidence from the historic environment, to record and advance the understanding of heritage assets and to make this publicly available is

a requirement of development management. This opportunity should be taken in a manner proportionate to the significance of a heritage asset and to impact of the proposal, particularly where a heritage asset is to be lost.

2 DESCRIPTION OF THE SITE (Fig. 1-2)

2.1 Lyng is located 18km north-west of Norwich. The site lies within the historic village core, on the north eastern side of The Street, and immediately adjacent to the west side of the medieval parish church of St Margaret. It comprises part of the former rear garden of the Fox and Hounds and it is proposed to construct a new residential development of three detached dwellings on the site.

3 TOPOGRAPHY, GEOLOGY & SOILS

3.1 The site is located at approximately 16m AOD in the River Wensum valley with the river 289m to the east. The valley floor in this area has been heavily quarried. The local soils are of the Yeld Association described as fine silty soils with slowly permeable subsoils and slight seasonal waterlogging associated with well drained fine loamy calcareous soils over limestone and well-drained fine silty soils over siltstone. The superficial geology is Silurian silty shale, siltstone and limestone. The underlying solid geology is Cretaceous Upper Chalk.

4 ARCHAEOLOGICAL BACKGROUND

4.1 Prehistoric flint tools of Palaeolithic, Neolithic and Bronze Age date have been found around the village, although none were within close proximity of the site (NHER 3020, 3035, 3040, 3041, 35296). The cropmarks of a ring ditch, possibly representing the remains of a Bronze Age round barrow, are visible on aerial photographs approximately 440m to the southwest (NHER 50636).

4.2 The archaeological potential of the site stems from its location in the historic core of Lyng, adjacent to the medieval churchyard. The Grade II* listed church has a 13th century west tower, and 15th century and later additions (NHER 3061). The earthworks of a series of medieval to post medieval enclosures, boundaries and trackways are visible on aerial photographs to the north of Port Row, commencing approximately 80m north-east of the site (NHER 50737). In the same area, Anglo-Saxon and medieval pottery and post-medieval coins have been recovered from the fields (NHER 12904).

4.3 The earthworks of a medieval manorial site, consisting of moated enclosures and fishponds, survive on the ground and are visible on

aerial photographs to the immediate south of the River Wensum. They are given a central grid reference approximately 350m north of the site (NHER 12303). Medieval brick and tiles and traces of a flint and revetment wall and a former structure have been identified. It has been suggested that this is the manor site of Sir John de Norwich. Metal-detecting to the south of this area, centred around the Bowling Green, recovered Roman, medieval/post-medieval metal objects, and post-medieval coins (NHER 58990). The earthworks of a series of medieval to post medieval boundaries and trackways, and a possible enclosure are visible on aerial photographs to the south of Manor Farm (NHER 50734).

4.4 The remains of a medieval moated site probably also forming part of the manor, upon which now stands an 18th century former rectory (now a private house), are located approximately 440m south-east of the site (NHER 16744). Multi-period finds have also been recovered during metal detecting in fields to the south of Lyng (NHER 35295, 35296). The earthworks of several clusters of small pits located approximately 550m south-west of the site are visible on 1946 aerial photographs on a former area of rough ground. Their date and function is uncertain, although the two most likely interpretations are that they are extraction pits (NHER 50766).

4.5 The Fox and Hounds is a mid to late 17th century timber framed pub. Its east end is an 18th century addition, and it has a 19th century brick façade (NHER 32292). Old Smithy Cottage fronting The Common is a Grade II listed late 18th century two storey former blacksmith's property (NHER 4517). To the south of The Street is an early 19th century garden designed by Humphry Repton, and consisting of woodland, shrubberies, lawns and terraces (NHER 30478), one of which looks over moat NHER 16744.

5 METHODOLOGY

5.1 A single trench of 25m x 1.6m was excavated across the footprint of the proposed new house plots.

5.2 The subsoil was mechanically excavated under close archaeological supervision. Exposed surfaces were cleaned by hand and examined for archaeological features. Deposits were recorded using *pro forma* recording sheets, drawn to scale, and photographed as appropriate. Excavated spoil was searched for finds and the trenches were scanned by a metal detector.

6 DESCRIPTION OF RESULTS

Trench 1 (Figs. 2 - 4)

<i>Sample section 1A</i> <i>0.00 = 16.22m AOD</i>		
0.00 – 0.21m	L1000	Topsoil. Dark greyish brown, friable, silty sand with frequent small and angular flint.
0.21 – 0.52m	L1001	Subsoil. Mid brown, friable, silty sand with frequent small and angular flint
0.52m+	L1002	Natural. Mid orange yellow, loose, sand and gravel.

<i>Sample section 1B</i> <i>0.00 = 16.35m AOD</i>		
0.00 – 0.30m	L1000	Topsoil. As above.
0.30 – 0.59m	L1001	Subsoil. As above.
0.59m+	L1002	Natural. As above.

Description: Trench 1 contained Ditches F1003 and F1005, and Gullies F1007 and F1009. F1005 contained a modern brick fragment and F1009 contained an iron nail fragment.

Ditch F1003 was linear in plan (1.60+ x 0.71 x 0.26m), orientated N/S. It had moderately steep irregular sides and a flattish base. Its fill, L1004, was a dark grey, loose, gravelly sand with frequent small and medium flint. It contained no finds.

Ditch F1005 was linear in plan (1.60+ x 0.53 x 0.11m), orientated N/S. It had shallow sides and a flattish base. Its fill, L1006, was a mid grey brown, loose, sandy gravel. It contained a 17th century brick fragment and a modern (19th century) brick fragment.

Gully F1007 was linear in plan (1.60+ x 0.35 x 0.08m), orientated N/S. It had shallow sides and a concave base. Its fill, L1008, was a mid grey brown, loose, sandy gravel. It contained no finds.

Gully F1009 was linear in plan (1.60+ x 0.21 x 0.08m), orientated N/S. It had moderately sloping sides and a concave base. Its fill, L1010, was a dark grey brown, friable, silty sand with small angular flint. It contained an iron nail fragment.

7 CONFIDENCE RATING

7.1 Though the topsoil had been removed prior to the commencement of the evaluation it not felt that any factors inhibited the recognition of archaeological features or finds.

8 DEPOSIT MODEL

8.1 Uppermost Topsoil L1000 was a dark greyish brown, friable, silty sand with frequent small and angular flint (c.0.25m thick). It overlay Subsoil L1001, was a mid brown, friable, silty sand with frequent small and angular flint (c.0.30m thick).

8.2 The natural geology, L1002, was a mid orange yellow, loose, sand and gravel (up to 0.59m below the surface of the exposed subsoil).

9 DISCUSSION

9.1 The recorded features are tabulated:

Trench	Context	Description	Spot Date
1	F1003	Ditch	Undated
	F1005	Ditch	Modern CBM
	F1007	Gully	Undated
	F1009	Gully	Iron nail fragment

9.2 The archaeological potential of the site stemmed from its location in the historic core of Lyng, adjacent to the medieval churchyard. The church has a 13th century west tower, and 15th century and later work (NHER 3061). A medieval moated site lies to the east of the church (NHER 16744) and the village preserves earthworks of medieval to post-medieval enclosures to the south and north of the proposed development site (e.g. NHER 50734; 12303, 50737). The Fox and Hounds PH is a mid to late 17th century building (NHER 32292). The site thus had a potential for further evidence of medieval and post-medieval village activity and also for remains associated with the adjacent medieval churchyard (including a potential for buried human remains).

9.3 Within the one trench, two ditches and two gullies were recorded. The linears were parallel, all aligned N/S and closely spaced. They did not intercut. The features were possibly broadly contemporary and may be of relatively recent date: Ditch F1005 contained a 17th century brick fragment and a modern (19th century) brick fragment. The features were broadly parallel with the western boundary of the church.

10 DEPOSITION OF THE ARCHIVE

10.1 Archive records, with inventory, will be deposited at Norwich Castle Museum in accordance with their requirements. The archive will be quantified, ordered, indexed, cross-referenced and checked for internal consistency. In addition to the overall site summary, it will be necessary to produce a summary of the artefactual and ecofactual data.

ACKNOWLEDGEMENTS

Archaeological Solutions would like to thank Bracken Developments for funding the project (in particular Mr Jonathon Powley for his assistance).

AS would like to acknowledge the input and advice of Ms Kelly Powell of Norfolk Historic Environment Service.

BIBLIOGRAPHY

British Geological Survey 1991 *East Anglia Sheet 52°N-00° 1:250,000 Series Quaternary Geology*. Ordnance Survey, Southampton

Gurney, D, 2003, *Standards for Field Archaeology in the East of England*, East Anglian Archaeology Occasional Paper 14

Institute for Field Archaeologists 1994 (revised 2008) *Standard and Guidance for Archaeological Evaluation*

[SSEW 1983](#) *Soil Survey of England and Wales: Soils of South East England (sheet 4)*. Harpenden, Rothamsted Experimental Station/Lawes Agricultural Trust

WEB SITES

British Listed Buildings
Norfolk Heritage Explorer
www.soilsworldwide.net

APPENDIX 1 CONCORDANCE OF FINDS

ENF135423, Lyng, Norfolk

Concordance of finds by feature

Feature	Context	Segment	Trench	Description	Spot Date	Pottery	CBM (g)	A.Bone (g)	Other
1005	1006		1	Fill of Ditch			1118		
1009	1010		1	Fill of Gully					Fe. Frag (1) - 4g
U/S	U/S		1	Unstrat.					Fe. Frags (2) - 260g

APPENDIX 2 SPECIALIST REPORT

The Ceramic Building Materials

Andrew Peachey MfA

Ditch F1005 (L1006) contained two fragments of brick (1118g); the largest of which (1027g) may have origins in the Tudor period to the 17th century; however the smaller fragment (91g) is of a 19th century 'soft-red' brick. The 16th-17th century brick is pale yellow-brown ('buff') and was manufactured by hand (pressed into a mould) in a medium to coarse sand-tempered fabric with partial dimensions of ?x120x50mm. It also exhibits the remnants of corroded iron nails or similar fittings that were driven into it while it formed part of a structure, but is otherwise of very limited merit in informing on any related buildings or structures.

OASIS DATA COLLECTION FORM: England

[List of Projects](#) | [Manage Projects](#) | [Search Projects](#) | [New project](#) | [Change your details](#) | [HER coverage](#) | [Change country](#) | [Log out](#)

Printable version

OASIS ID: archaeol7-200071

Project details

Project name	Land to Rear of Fox and Hounds PH, The Street, Lyng, Norfolk NR9 5LA
Short description of the project	In November 2014 Archaeological Solutions (AS) carried out an archaeological trial trench evaluation of land to the rear of the Fox and Hounds PH, The Street, Lyng, Norfolk NR9 5AL (NGR TG 0685 1788). It is proposed to construct a residential development of three dwellings to the rear of the public house. Norfolk County Council Historic Environment Team (NCC HES) have advised the LPA that a trial trench evaluation of the site should be carried out to provide further information prior to the determination of the planning application submitted for the development (Breckland Council Planning Ref. 3PL/2014/1012/F), in order to identify the presence of any archaeological remains for which further mitigation may be required. Within the one trench, two ditches and two gullies were recorded. The linears were parallel, all aligned N/S and closely spaced. They did not intercut. The features were possibly broadly contemporary and may be of relatively recent date: Ditch F1005 contained a 17th century brick fragment and a modern (19th century) brick fragment. The features were broadly parallel with the western boundary of the church.
Project dates	Start: 01-11-2014 End: 18-11-2014
Previous/future work	No / No
Any associated project reference codes	P6034 - Contracting Unit No.
Any associated project reference codes	ENF 135423 - Sitecode
Type of project	Recording project
Site status	None
Current Land use	Other 15 - Other
Monument type	LINEARS Post Medieval
Significant Finds	CBM Post Medieval
Significant Finds	CBM Modern
Investigation type	"Watching Brief"
Prompt	Planning condition

Project location

Country England

Site location	NORFOLK BRECKLAND LYNG Land to Rear of Fox and Hounds PH, The Street, Lyng, Norfolk NR9 5LA
Postcode	NR9 5LA
Study area	1700.00 Square metres
Site coordinates	TG 0685 1788 52.7185141972 1.06304896203 52 43 06 N 001 03 46 E Point
Height OD / Depth	Min: 16.00m Max: 16.00m

Project creators

Name of Organisation	Archaeological Solutions Ltd
Project brief originator	NCC HES
Project design originator	Jon Murray
Project director/manager	Jon Murray
Project supervisor	Kamil Orzechowski
Name of sponsor/funding body	Bracken Developments

Project archives

Physical Archive recipient	Norwich Castle Museum
Physical Contents	"other"
Digital Archive recipient	Norwich Castle Museum
Digital Contents	"Survey"
Digital Media available	"Images raster / digital photography", "Survey", "Text"
Paper Archive recipient	Norwich Castle Museum
Paper Contents	"Survey"
Paper Media available	"Drawing", "Photograph", "Plan", "Report", "Survey "

Project bibliography 1

Publication type	Grey literature (unpublished document/manuscript)
Title	Land to Rear of Fox and Hounds PH, The Street, Lyng, Norfolk NR9 5LA
Author(s)/Editor(s)	Orzechowski, K
Other bibliographic details	Archaeological Solutions Report No. 4728
Date	2014
Issuer or publisher	Archaeological Solutions Ltd
Place of issue or publication	Bury St Edmunds

Entered by Sarah Powell (Info@ascontracts.co.uk)
Entered on 14 January 2015

OASIS:

Please e-mail [English Heritage](#) for OASIS help and advice

© ADS 1996-2012 Created by [Jo Gilham](#) and [Jen Mitcham](#), [email](#) Last modified Wednesday 9 May 2012

Cite only: <http://www.oasis.ac.uk/form/print.cfm> for this page

PHOTOGRAPHIC INDEX



1
Ditch 1003 looking south



2
F1005, F1007 and F1009 looking south



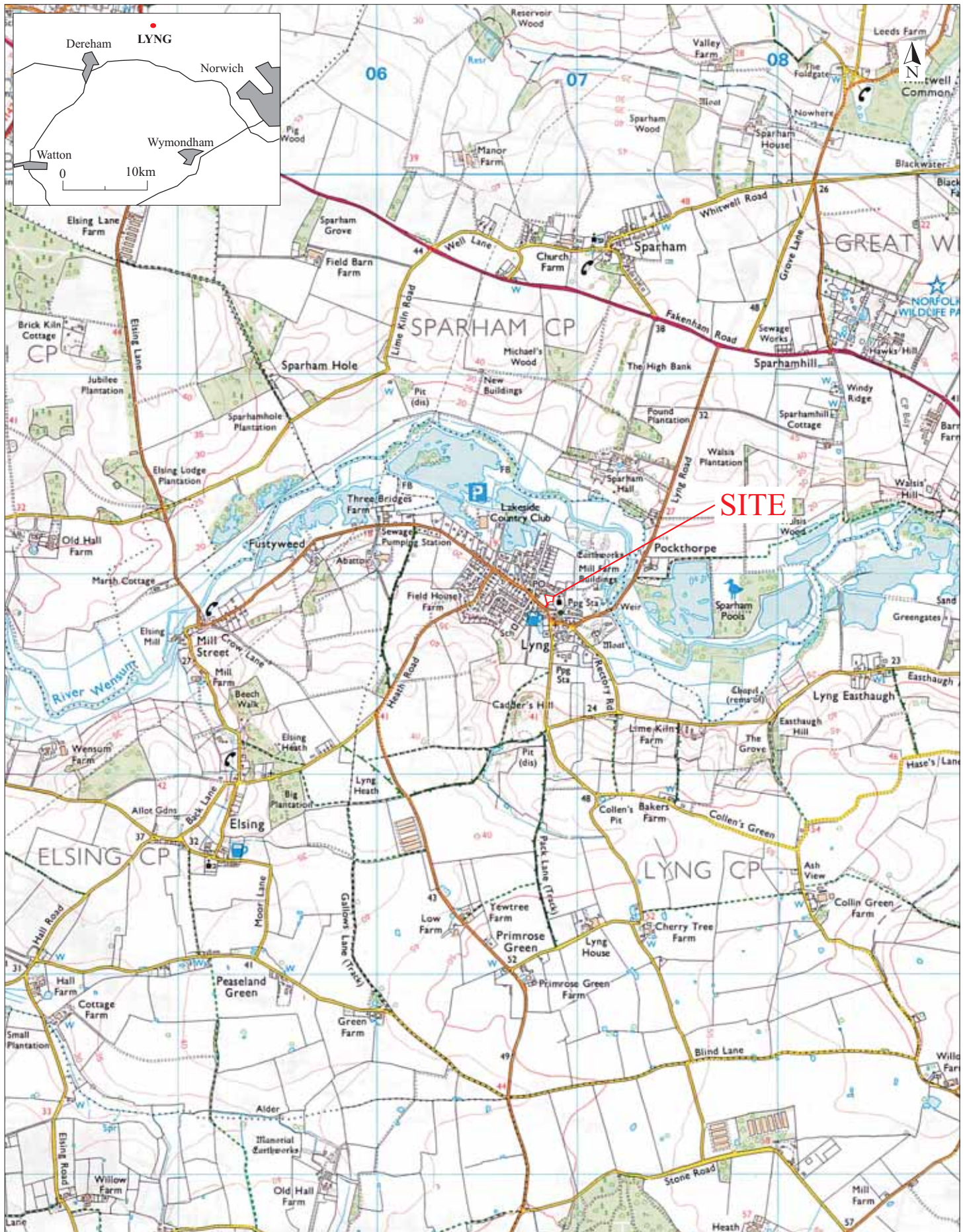
3
Post excavation shot of Trench 1



4
Sample section 1A

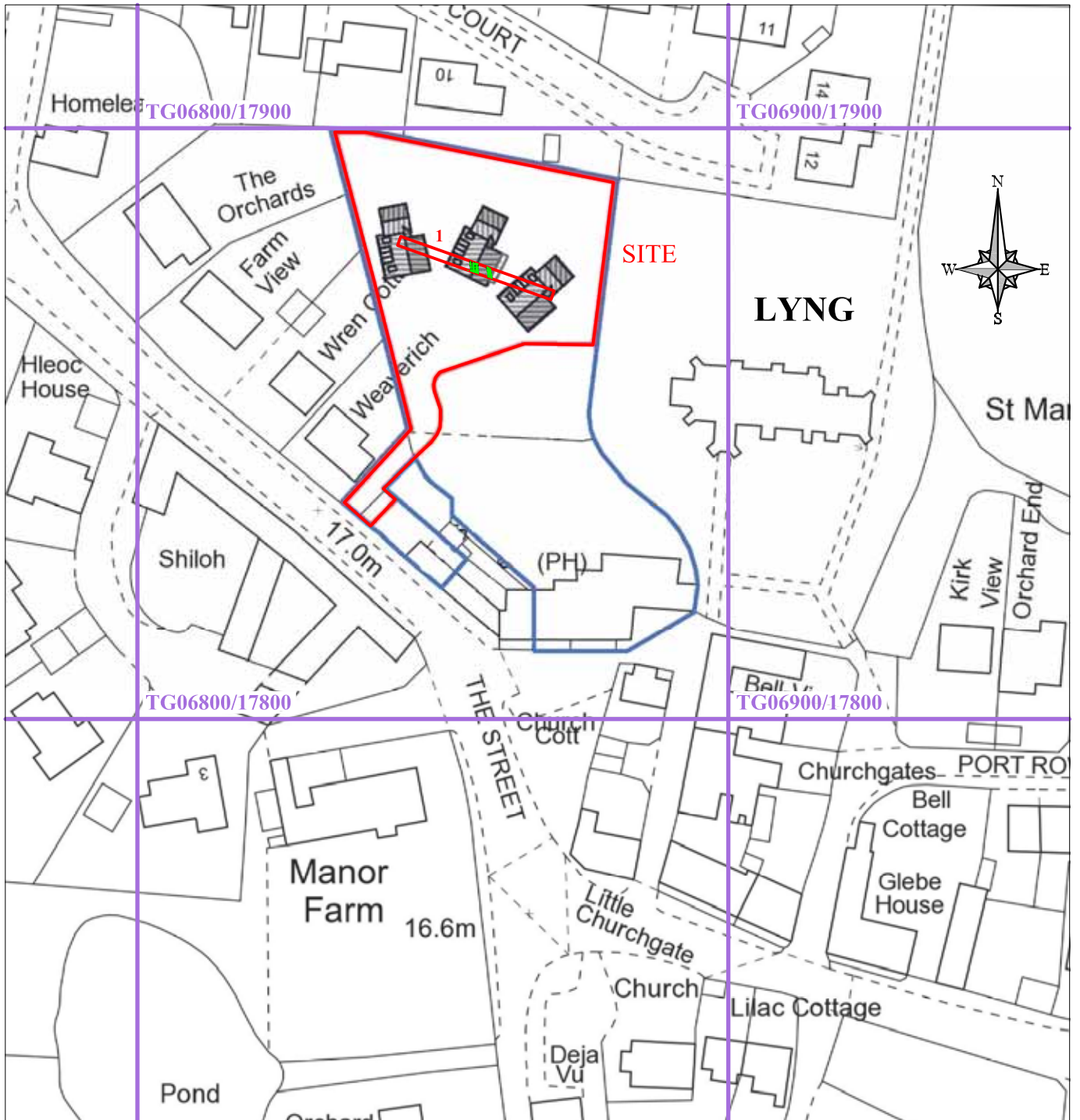


5
Sample section 1B



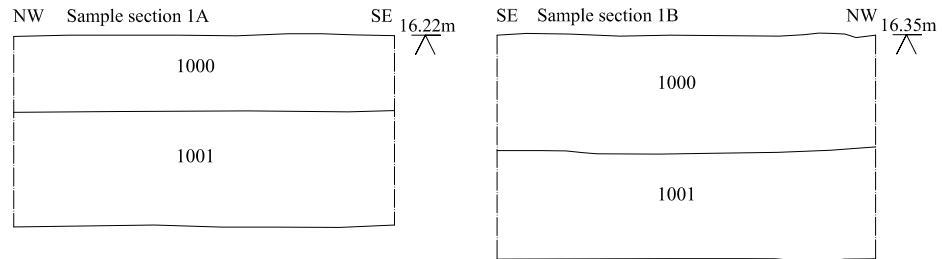
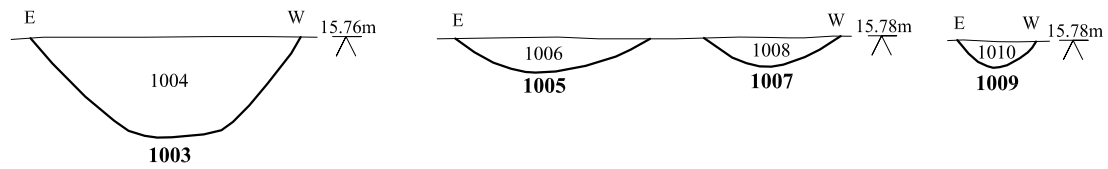
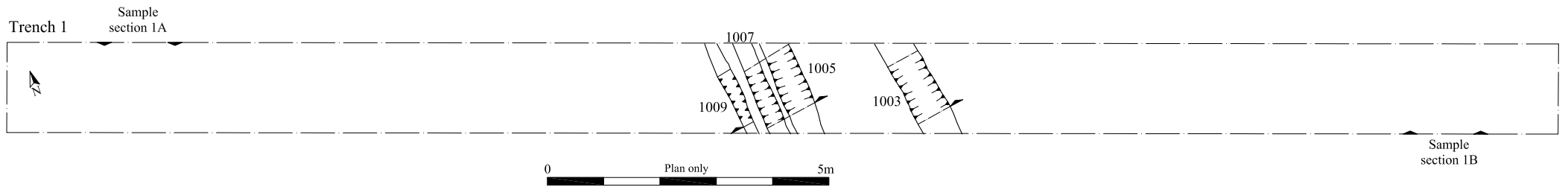
Reproduced from the 1999 Ordnance Survey 1:25000 map with the permission of Her Majesty's Stationery Office. © Crown copyright Archaeological Solutions Ltd Licence number 100036680

Archaeological Solutions Ltd
Fig. 1 Site location plan
 Scale 1:25,000 at A4



0 50m

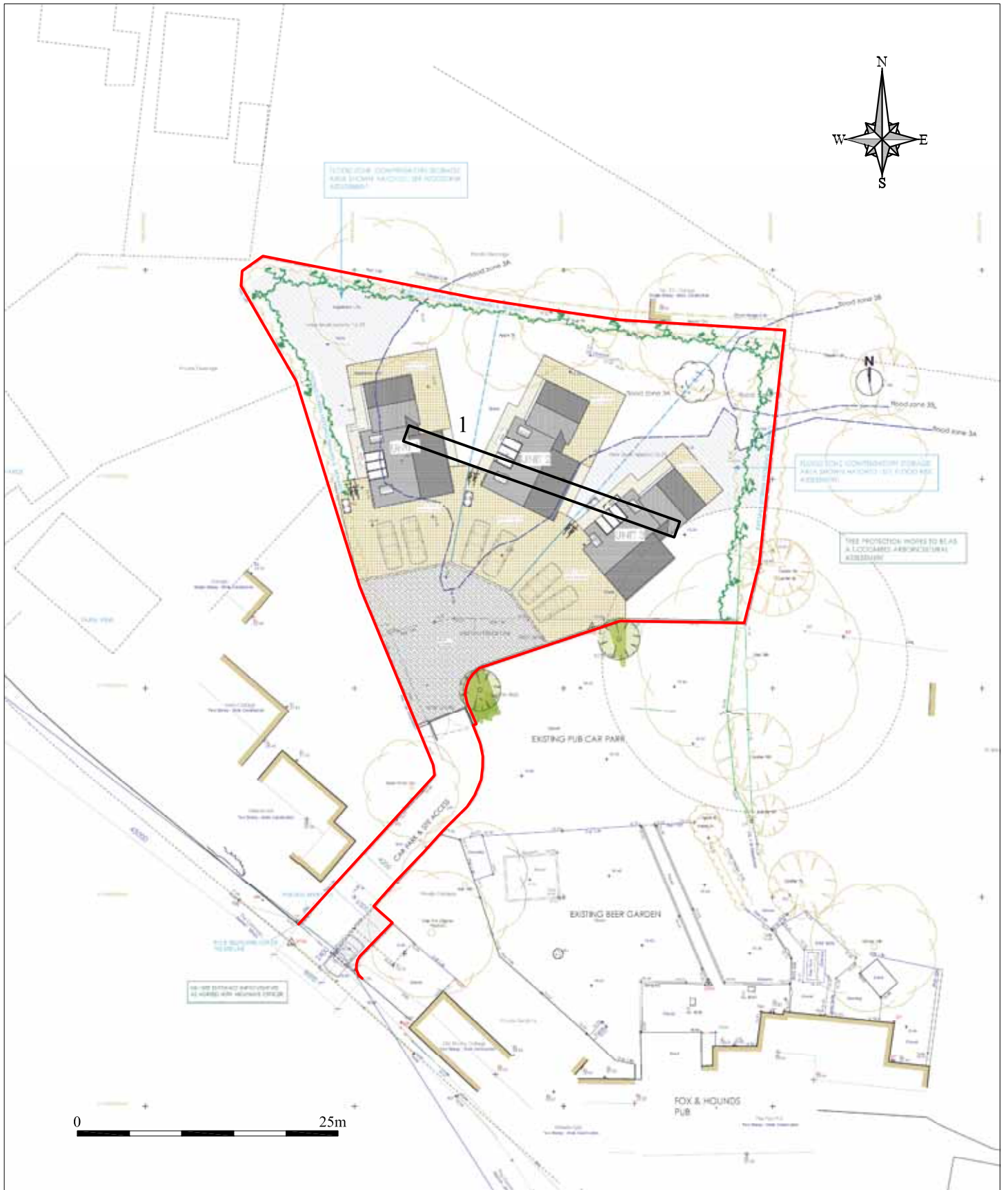
Archaeological Solutions Ltd
Fig. 2 Detailed site location plan
 Scale 1:1000 at A4



Archaeological Solutions Ltd

Fig. 3 Trench plan and sections

Scale 1:100 and 1:20 at A4



Archaeological Solutions Ltd

Fig. 4 Proposed development plan

Scale 1:500 at A4